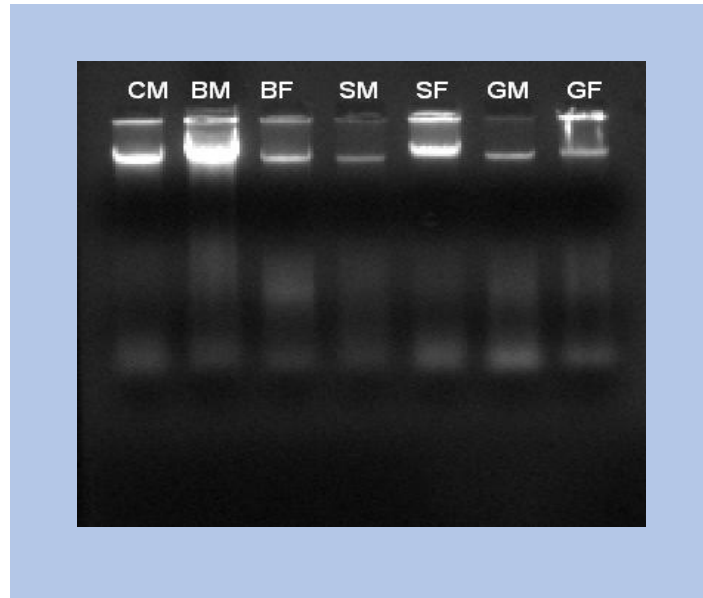


## Quality of DNA Extracted by Alkaline Lysis Method and its utility for PCR Amplification



**Figure 1: DNA extracted from fresh meat by Phenol: Chloroform Method**

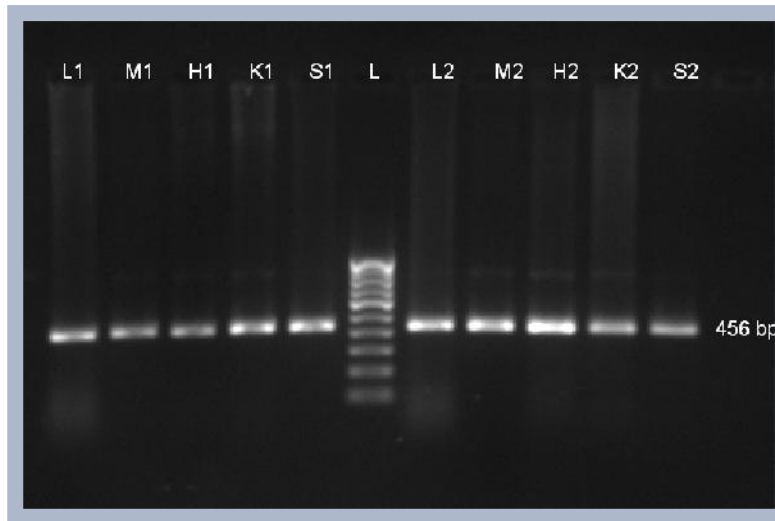
**CM: Cattle ( ); BM: Buffalo ( ); SM: Sheep ( ); GM: Goat ( )**

**BF: Buffalo ( ); SF: Sheep ( ); GF: Goat ( )**



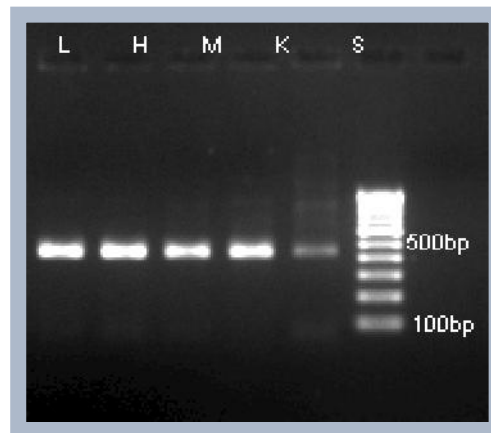
**Figure 2: DNA extracted from fresh meat by Alkaline Lysis Method**

**C: Cattle ; B: Buffalo; S: Sheep ; G: Goat**

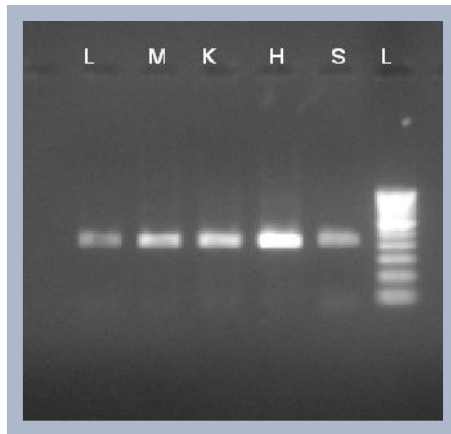


**Figure 3: PCR amplification of mt 12S rRNA gene using DNA extracted by Phenol: Chloroform: Iso amyl alcohol method**

**L: Liver; M: Meat; H: Heart; K: Kidney; S: Skin; L: DNA Ladder**



**Figure 4: PCR Amplification of mt 12S rRNA gene using DNA extracted by Bioserve DNA extraction kit**



**Figure 5: PCR Amplification of mt 12S rRNA gene using DNA extracted by Alkaline lysis method**