



# MONITORING PADDY RESIDUE BURNING IN NORTH INDIA USING SATELLITE REMOTE SENSING DURING 2018



Summary report issued on 05-Nov-2018  
(Period: 30-Sep-2018 to 04-Nov-2018)

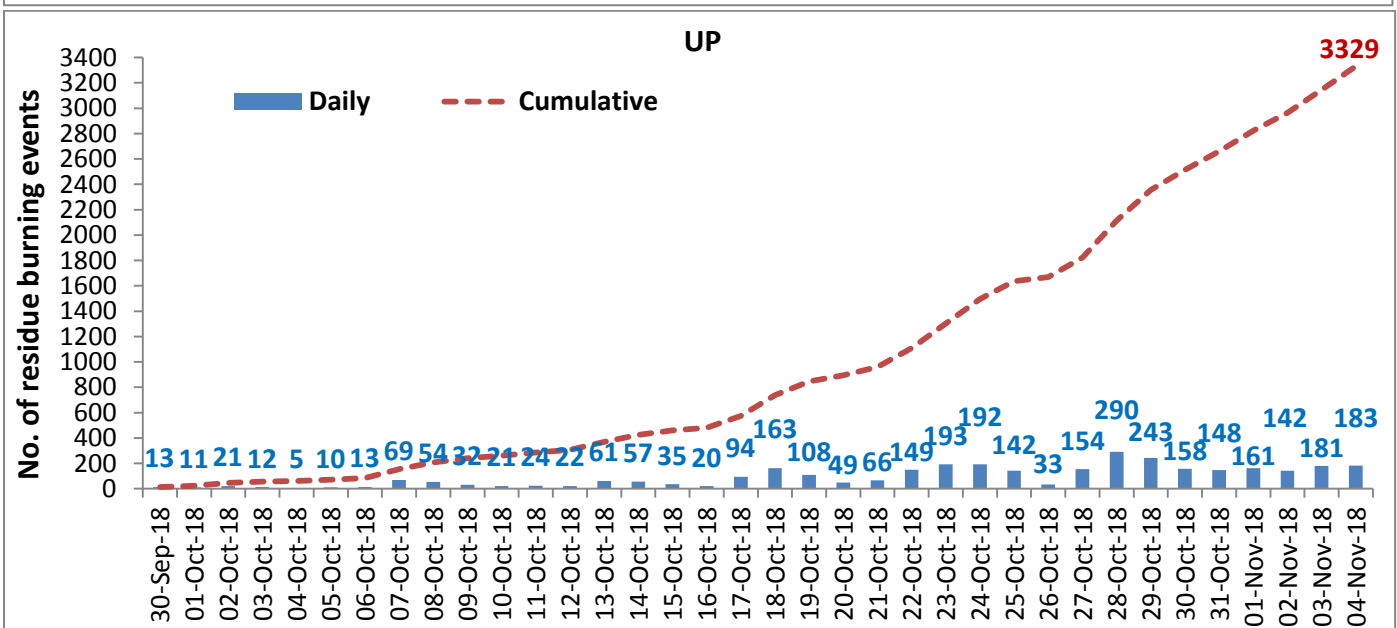
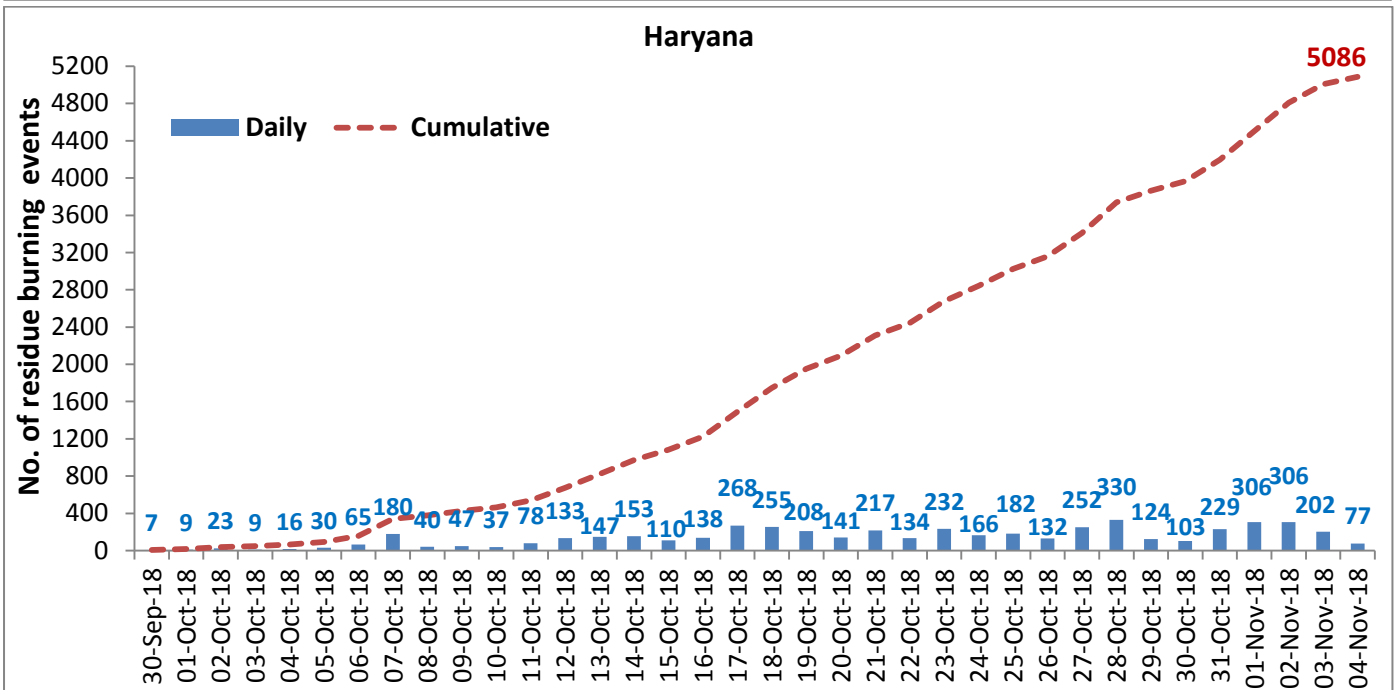
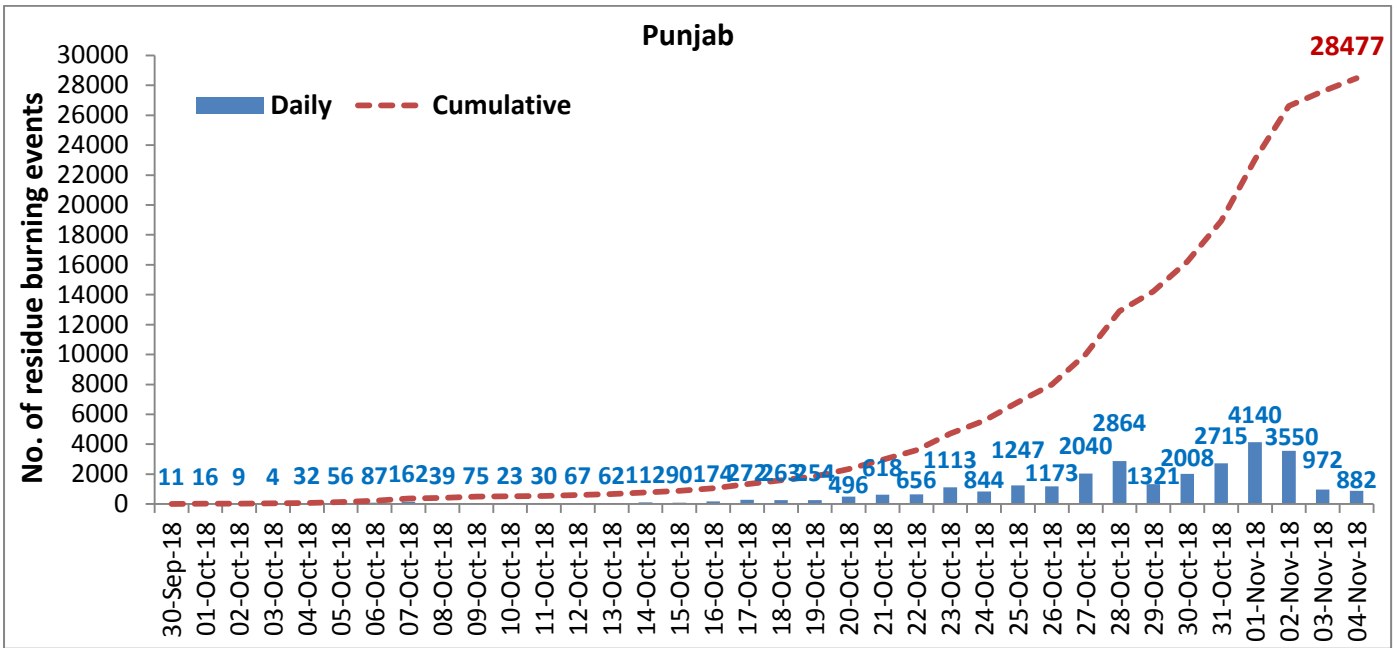
## Highlights

- Satellites detected **1142** residue burning events in the three States (Punjab, Haryana & UP) on **04-Nov-2018**.
- The detection by satellites was hampered second successive day due to clouds in parts of Punjab and Haryana.
- The burning events detected on **04-Nov-2018** are **882**, **77** and **183** in Punjab, Haryana, and UP, respectively.
- The number of events has decreased from **1355** on **03-Nov-2018** to **1142** on **04-Nov-2018** in the three States.
- Total **36892** burning events were detected in the three States between **30-Sept-2018** and **04-Nov-2018**, which are distributed as **28477**, **5086** and **3329** in Punjab, Haryana and UP, respectively.
- Till **04-Nov-2018**, the burning events in the current year are about **64%** of the events detected in 2017 and about **49.8%** of the events detected in 2016.
- Overall, about **36%** and **50%** reduction in burning events are observed in current year (2018) till date as compared to that in 2017 and 2016, respectively.

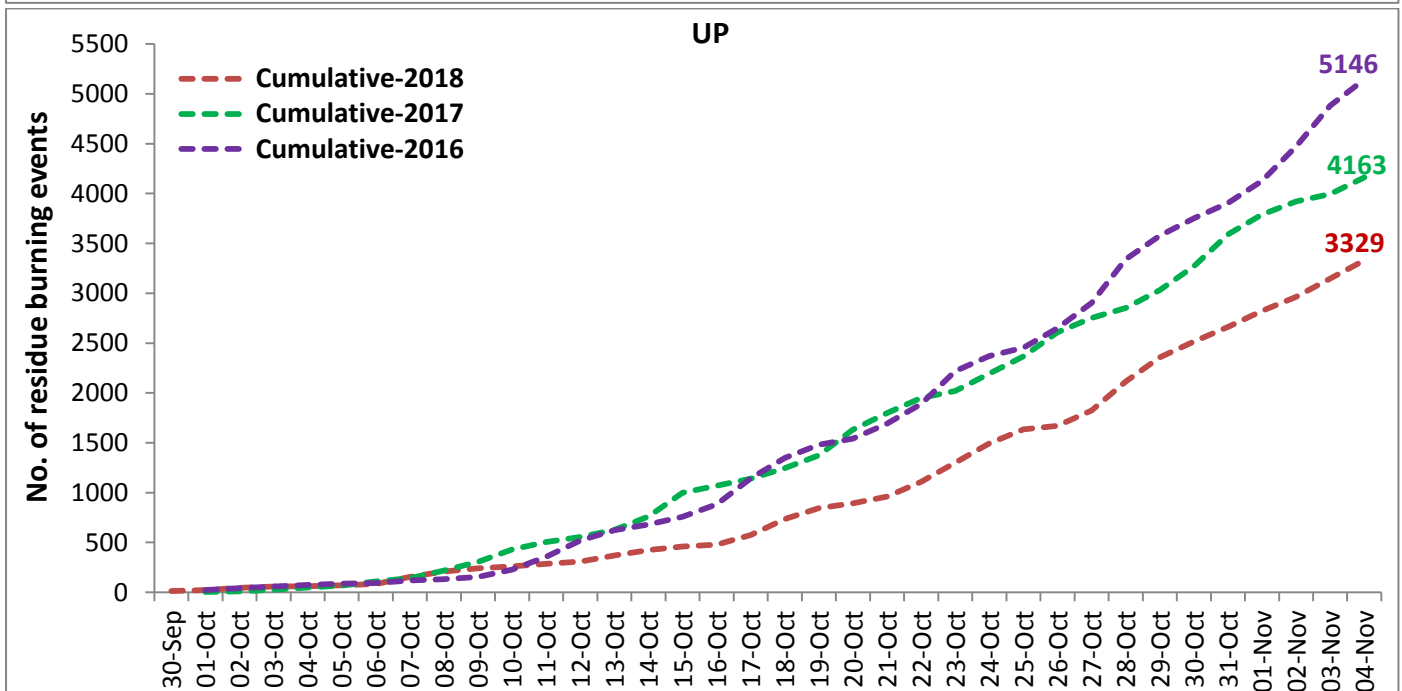
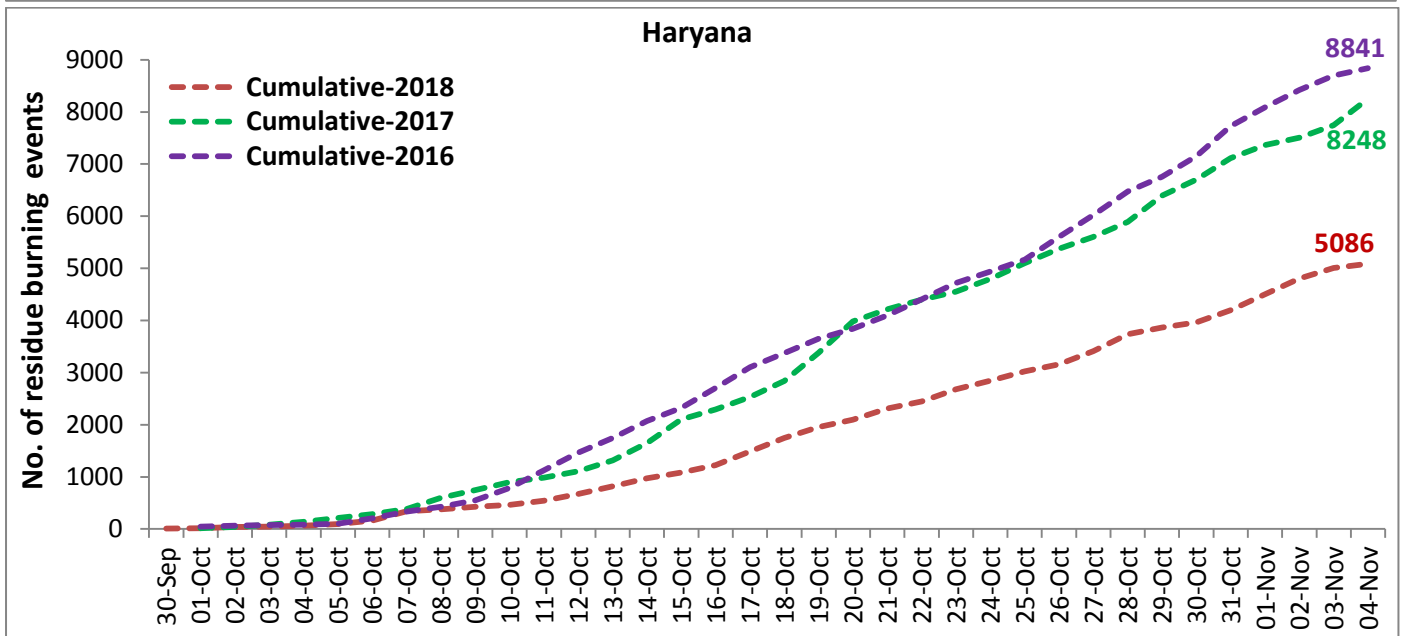
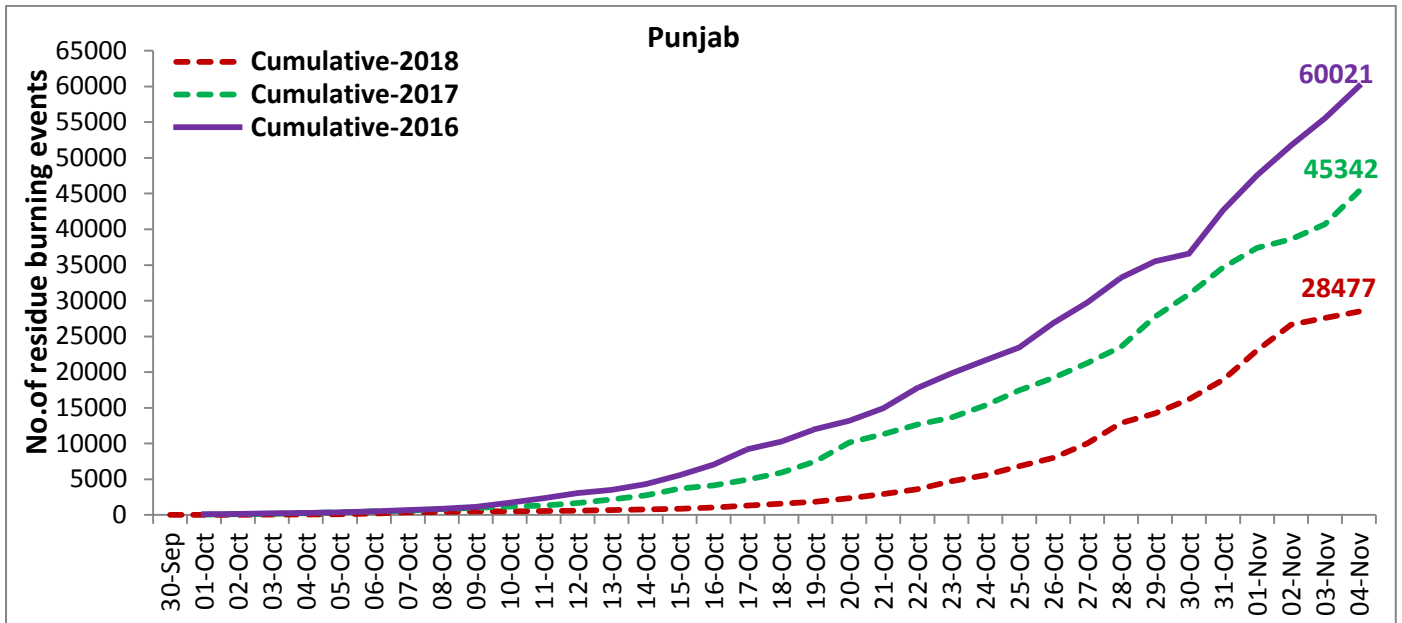
**State wise and date wise number of residue burning events detected in 2016, 2017 and 2018**

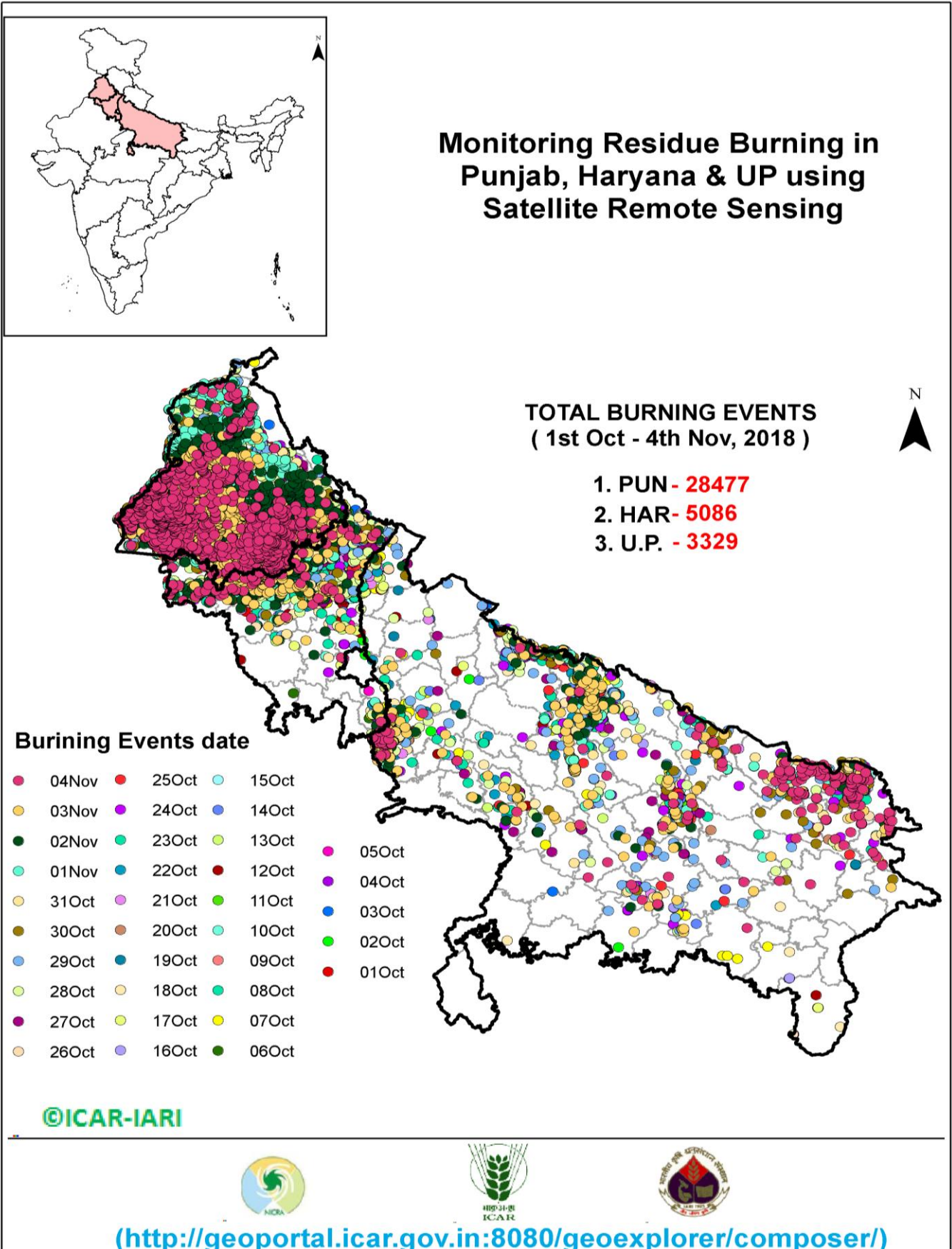
Date	Punjab			Haryana			UP			Total		
	2016	2017	2018	2016	2017	2018	2016	2017	2018	2016	2017	2018
<b>30-Sep</b>	--	--	11	--	---	7	--	---	13	--	---	31
<b>1-Oct</b>	109	54	16	46	13	9	23	2	11	178	69	36
<b>2-Oct</b>	51	50	9	16	27	23	20	8	21	87	85	53
<b>3-Oct</b>	66	62	4	16	40	9	16	17	12	98	119	25
<b>4-Oct</b>	37	103	32	7	60	16	15	22	5	59	185	53
<b>5-Oct</b>	95	106	56	15	68	30	14	20	10	124	194	96
<b>6-Oct</b>	152	138	87	105	75	65	6	39	13	263	252	165
<b>7-Oct</b>	171	105	162	126	97	180	24	31	69	321	233	411
<b>8-Oct</b>	166	215	39	94	218	40	14	75	54	274	508	133
<b>9-Oct</b>	270	163	75	121	148	47	22	87	32	413	398	154
<b>10-Oct</b>	597	164	23	242	151	37	74	126	21	913	441	81
<b>11-Oct</b>	652	177	30	336	87	78	128	74	24	1116	338	132
<b>12-Oct</b>	694	342	67	338	123	133	164	51	22	1196	516	222
<b>13-Oct</b>	467	470	62	284	207	147	102	69	61	853	746	270
<b>14-Oct</b>	812	582	112	328	333	153	60	137	57	1200	1052	322
<b>15-Oct</b>	1215	943	90	248	458	110	76	237	35	1539	1638	235
<b>16-Oct</b>	1478	465	174	385	186	138	125	71	20	1988	722	332
<b>17-Oct</b>	2173	807	272	399	244	268	261	69	94	2833	1120	634
<b>18-Oct</b>	1065	970	263	270	306	255	204	108	163	1539	1384	681
<b>19-Oct</b>	1762	1591	254	276	541	208	132	128	108	2170	2260	570
<b>20-Oct</b>	1175	2653	496	188	597	141	62	255	49	1425	3505	686
<b>21-Oct</b>	1726	1139	618	257	233	217	152	168	66	2135	1540	901
<b>22-Oct</b>	2837	1356	656	309	186	134	194	151	149	3340	1693	939
<b>23-Oct</b>	2040	994	1113	313	155	232	331	72	193	2684	1221	1538
<b>24-Oct</b>	1836	1714	844	221	244	166	152	171	192	2209	2129	1202
<b>25-Oct</b>	1813	2104	1247	229	303	182	83	175	142	2125	2582	1571
<b>26-Oct</b>	3390	1715	1173	434	276	132	195	240	33	4019	2231	1338
<b>27-Oct</b>	2904	2069	2040	417	224	252	255	145	154	3576	2438	2446
<b>28-Oct</b>	3493	2318	2864	458	292	330	435	99	290	4386	2709	3484
<b>29-Oct</b>	2258	4184	1321	278	502	124	237	180	243	2773	4866	1688
<b>30-Oct</b>	1076	3152	2008	395	307	103	175	238	158	1646	3697	2269
<b>31-Oct</b>	6132	3743	2715	575	413	229	153	321	148	6860	4447	3092
<b>01-Nov</b>	4843	2736	4140	362	250	306	223	199	161	5628	3185	4607
<b>02-Nov</b>	4183	1246	3550	332	145	306	345	131	142	4860	1522	3998
<b>03-Nov</b>	3806	2109	972	275	240	202	409	75	181	4409	2424	1355
<b>04-Nov</b>	4477	4603	882	146	499	77	265	168	183	4888	5270	1142
<b>Total</b>	<b>60021</b>	<b>45342</b>	<b>28477</b>	<b>8841</b>	<b>8248</b>	<b>5086</b>	<b>5146</b>	<b>4163</b>	<b>3329</b>	<b>74008</b>	<b>57753</b>	<b>36892</b>

### Daily and cumulative Graphs for 2018



### Comparison of burning events of 2018 with events in 2016 and 2017





Consortium for Research on Agroecosystem Monitoring and Modeling from Space (CREAMS) Laboratory,  
Division of Agricultural Physics, ICAR – Indian Agricultural Research Institute, New Delhi – 110012

(Website: <http://creams.iari.res.in>)

(Email: [iaricreams@gmail.com](mailto:iaricreams@gmail.com))

GIS Maps of burning events can be visualized online: <http://geoportal.icar.gov.in:8080/geoexplorer/composer/>