

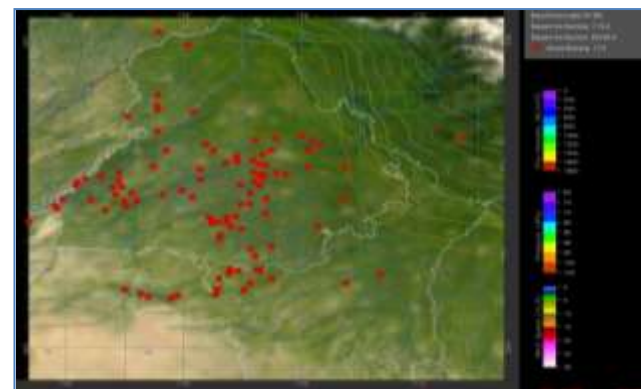
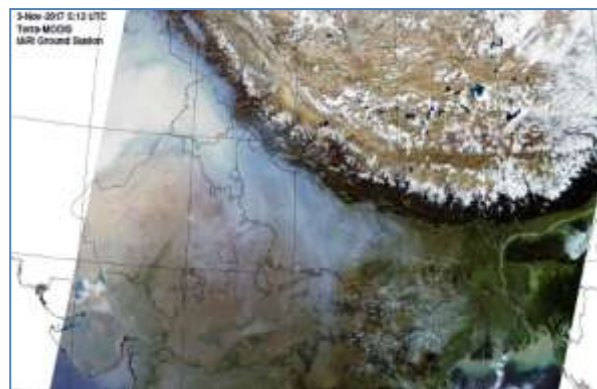


MONITORING PADDY RESIDUE BURNING IN NORTH INDIA USING SATELLITE REMOTE SENSING DURING 2020

**Bulletin
No. 7**

**Events Date:
07-Oct-2020**

**Issued on:
08-Oct-2020**



Prepared by:

**Consortium for Research on Agroecosystem Monitoring and Modeling from Space (CREAMS) Laboratory,
Division of Agricultural Physics, ICAR – Indian Agricultural Research Institute, New Delhi – 110012**

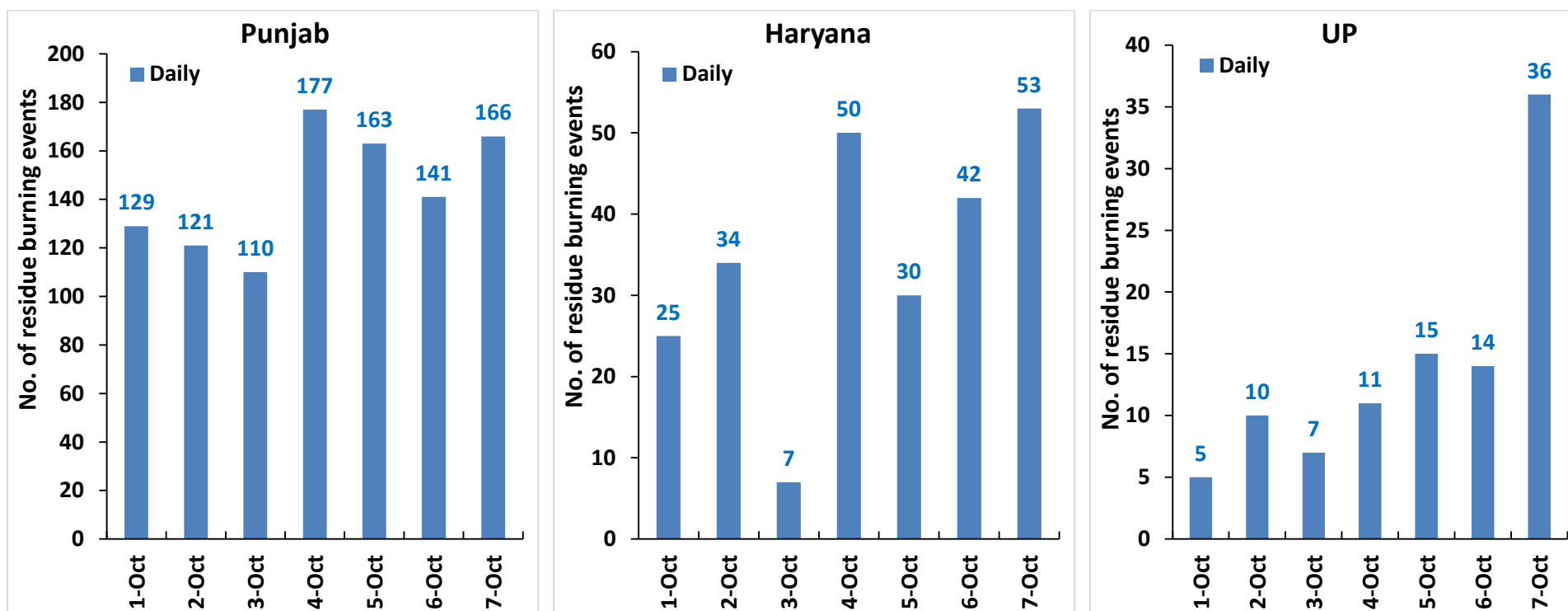
<http://creams.iari.res.in>



Highlights for 07-October-2020

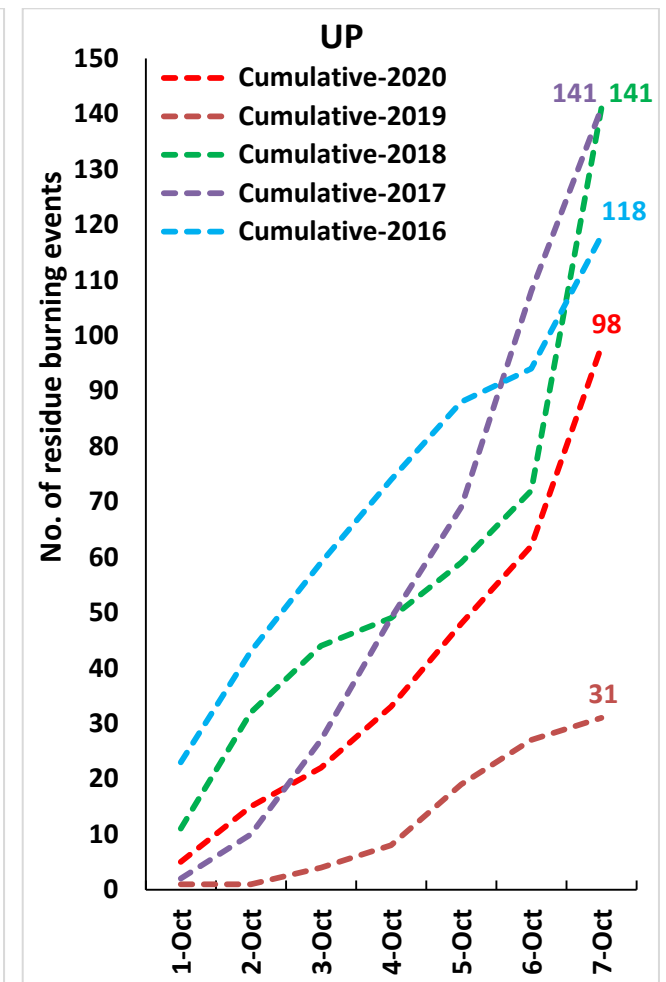
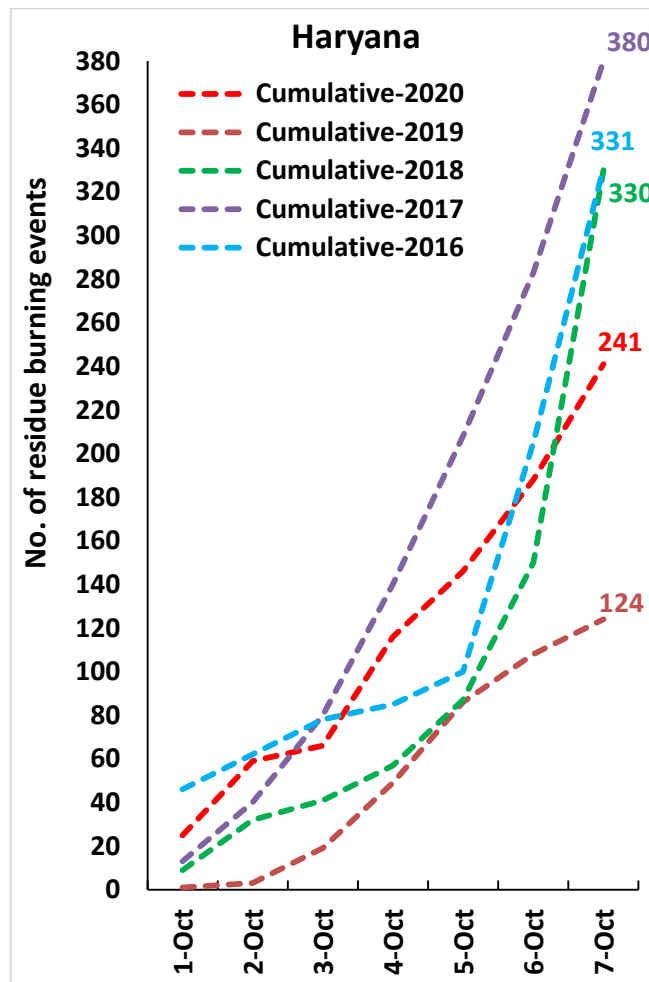
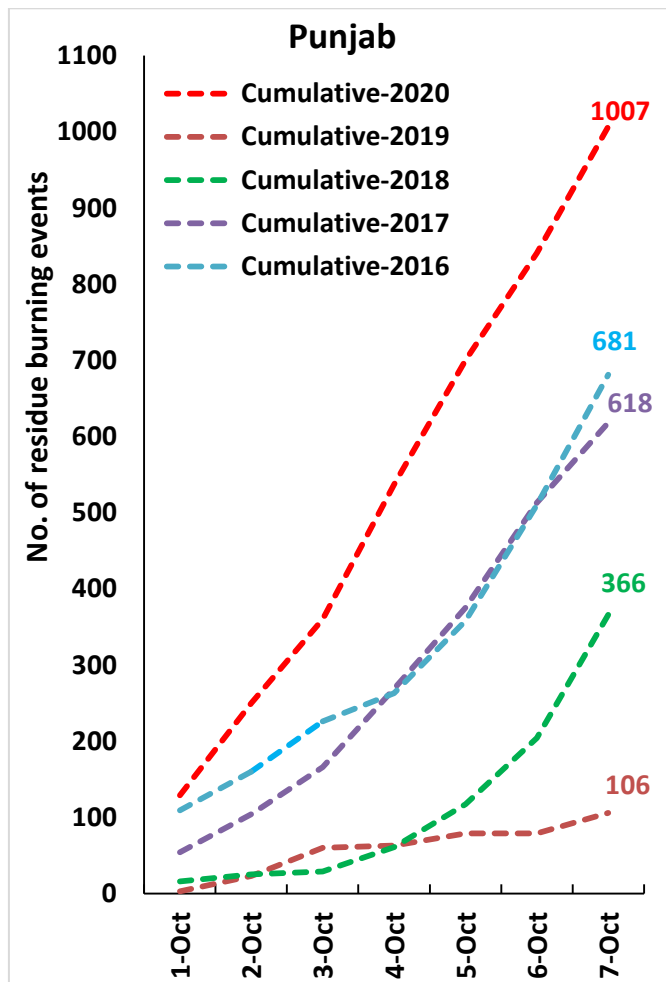
- Satellites detected **255** residue burning events in the three study States on 07-Oct-2020.
- The state wise events detected on 07-Oct-2020 were **166** in Punjab, **53** in Haryana and **36** in UP.
- In Punjab, burning/fire events were concentrated in Amritsar and Tarn Taran districts.
- In Haryana, burning/fire events were concentrated in Kurukshetra district.
- In Uttar Pradesh, the burning events were scattered.
- Total **1346** burning events were detected in the three States between **01-Oct-2020** and **07-Oct-2020**, which are distributed as **1007**, **241** and **98** in Punjab, Haryana and UP, respectively.

Temporal distribution of residue burning events for the three study States in 2020

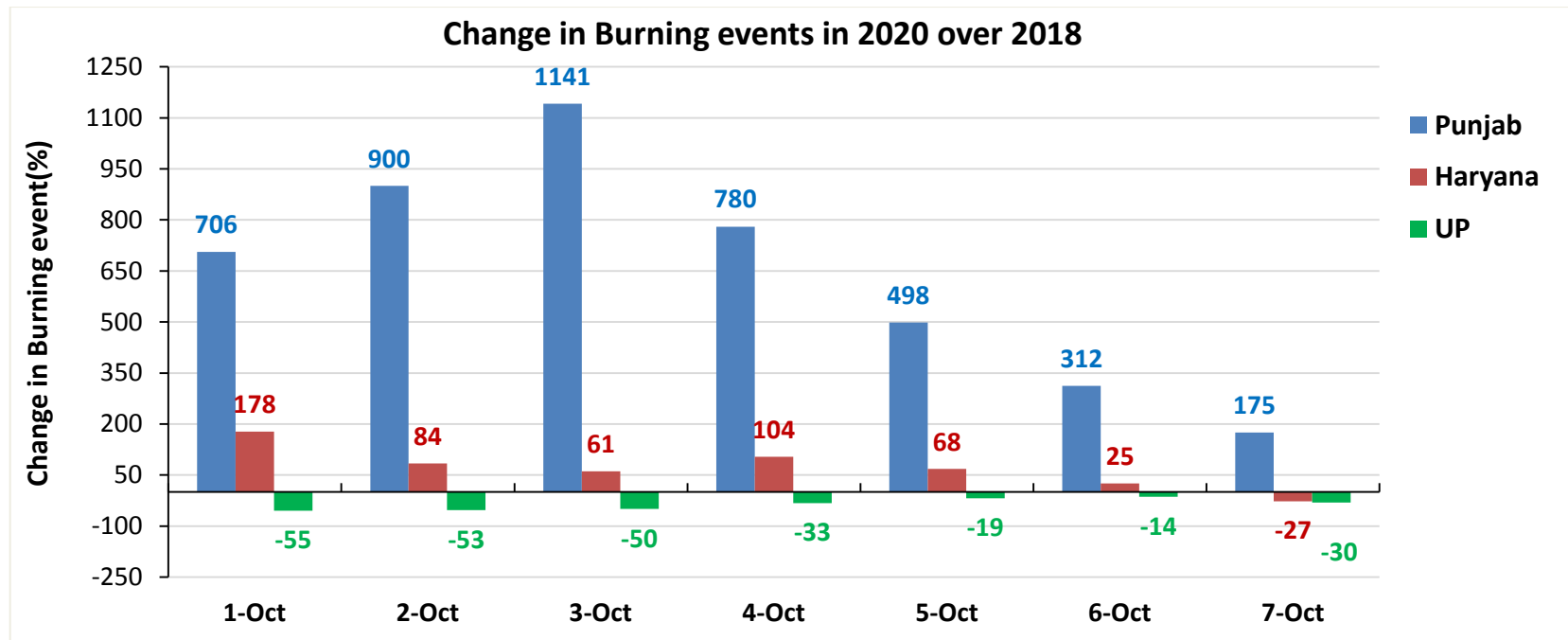
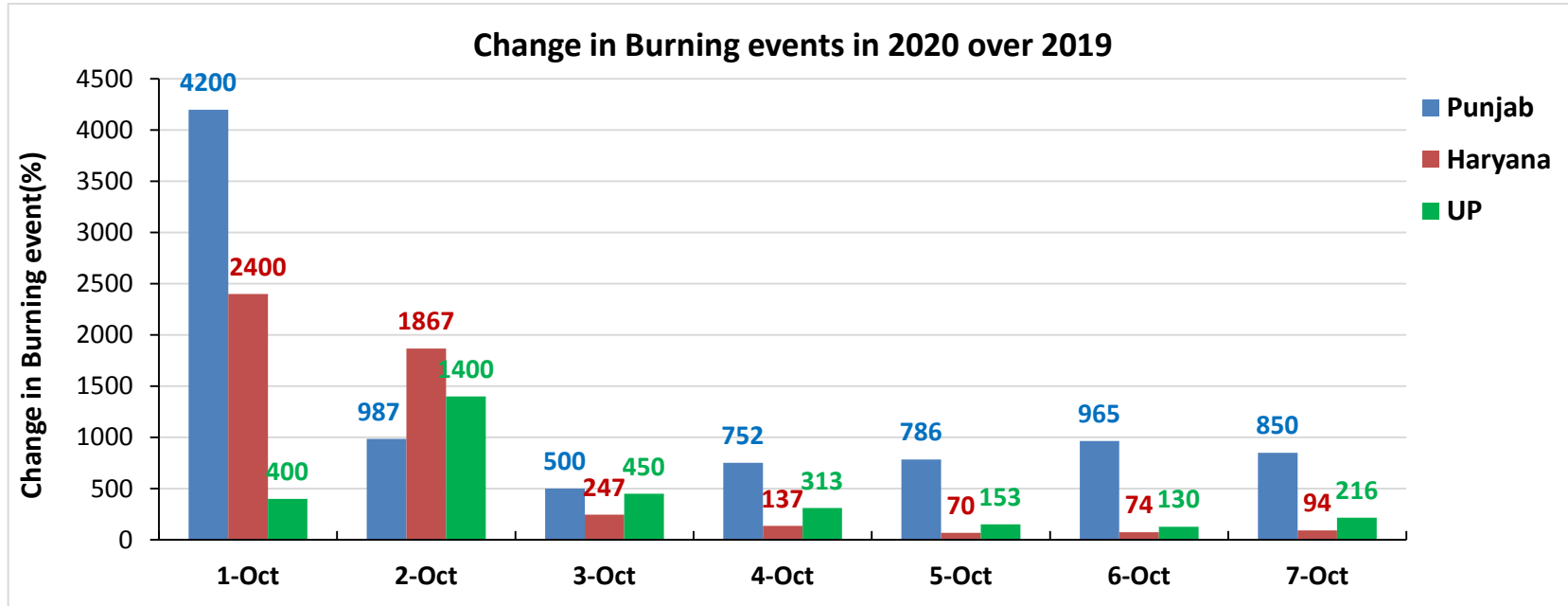


Comparison of residue burning events in current year (2020) with previous years (2019, 2018, 2017 & 2016) for the three study States

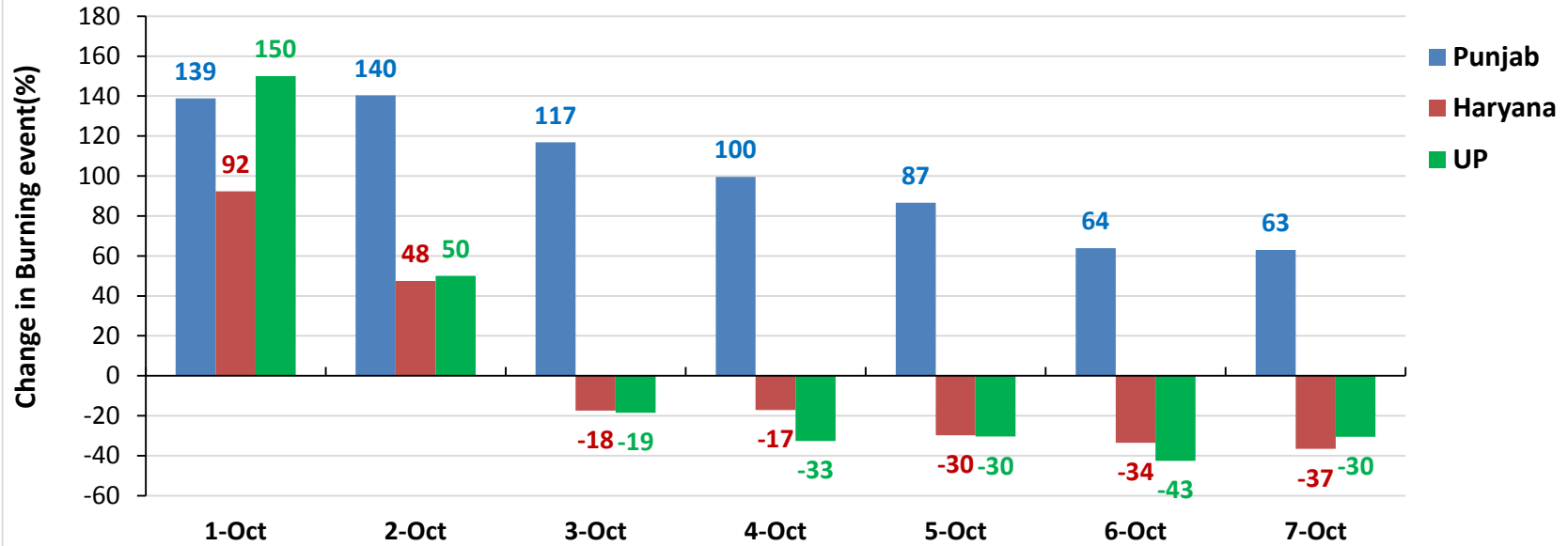
(01-Oct to 07-Oct)



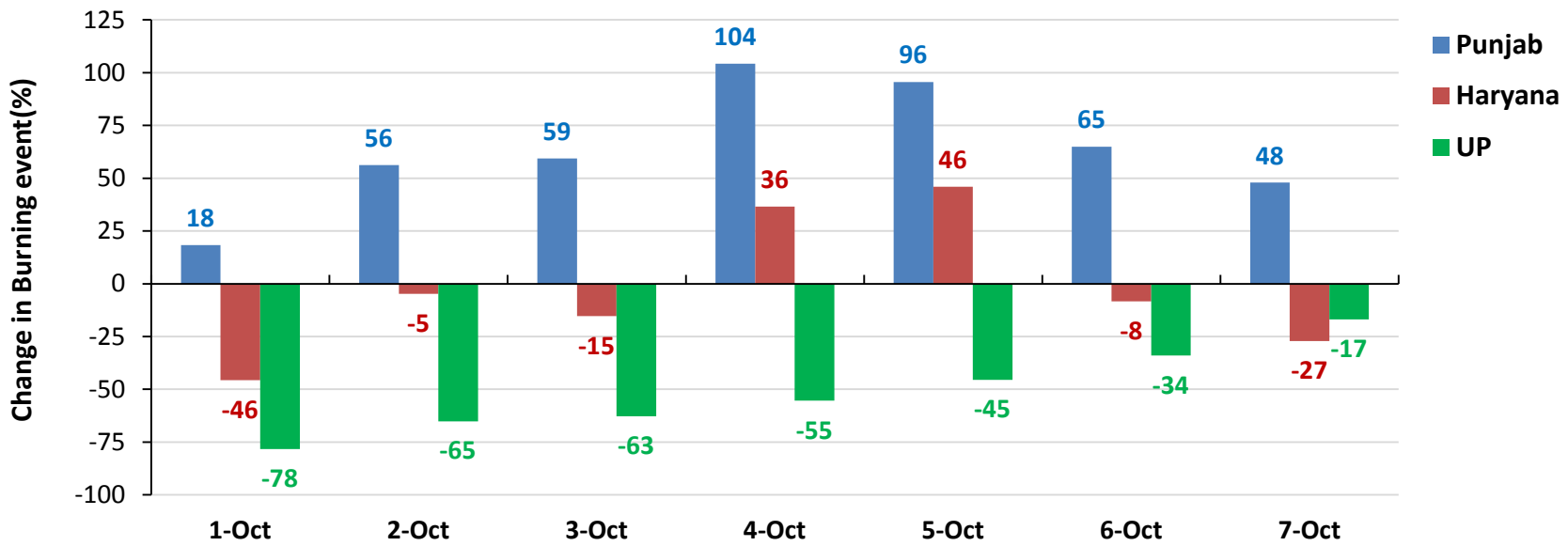
Percent Change in Burning events in 2020 over 2019, 2018, 2017 and 2016 (Daily Cumulative)



Change in Burning events in 2020 over 2017

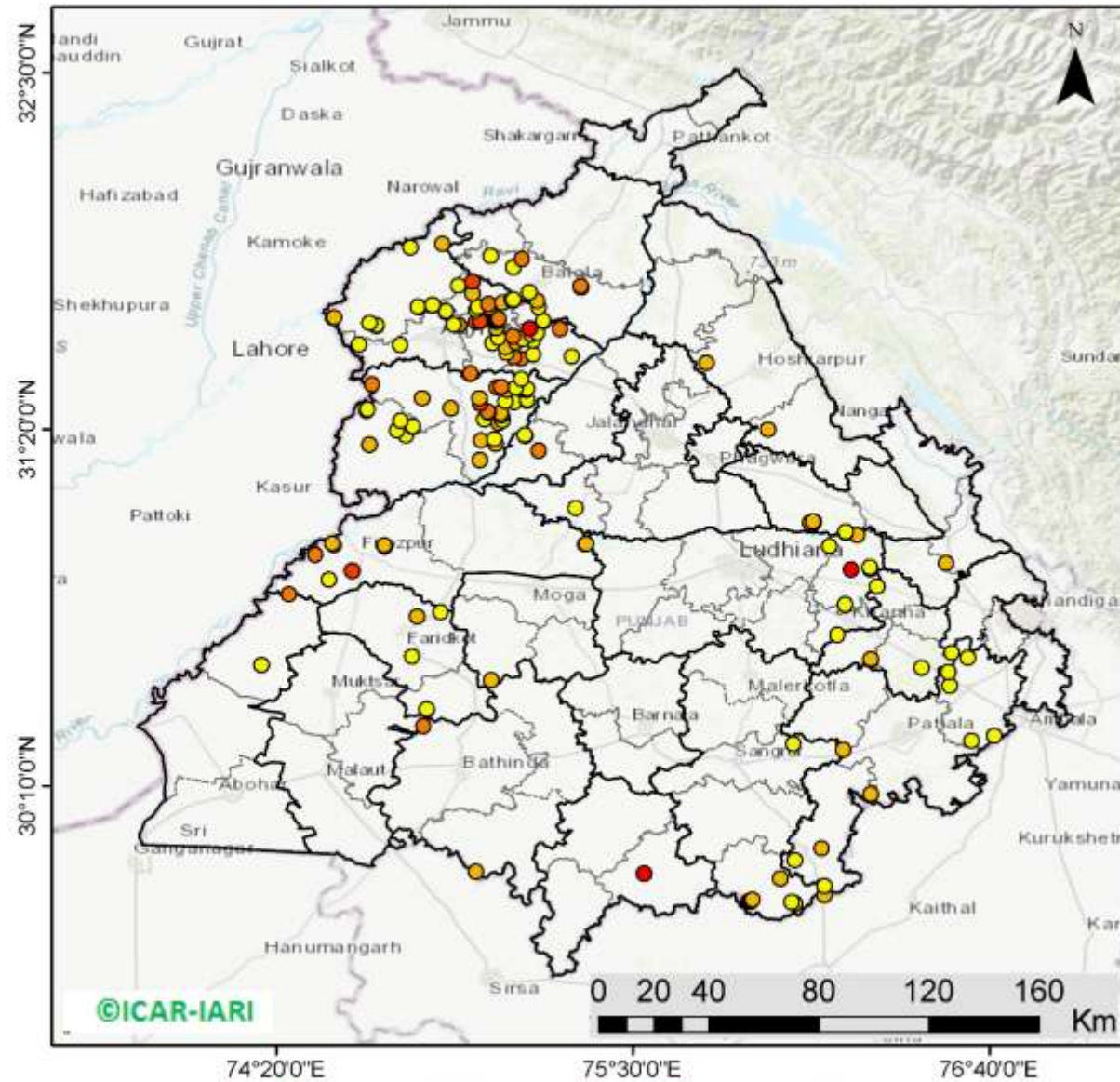


Change in Burning events in 2020 over 2016



(a) Punjab

RICE RESIDUE BURNING IN PUNJAB



166 burning events detected in Punjab on 07th October 2020

Fire Intensity (W/m²)

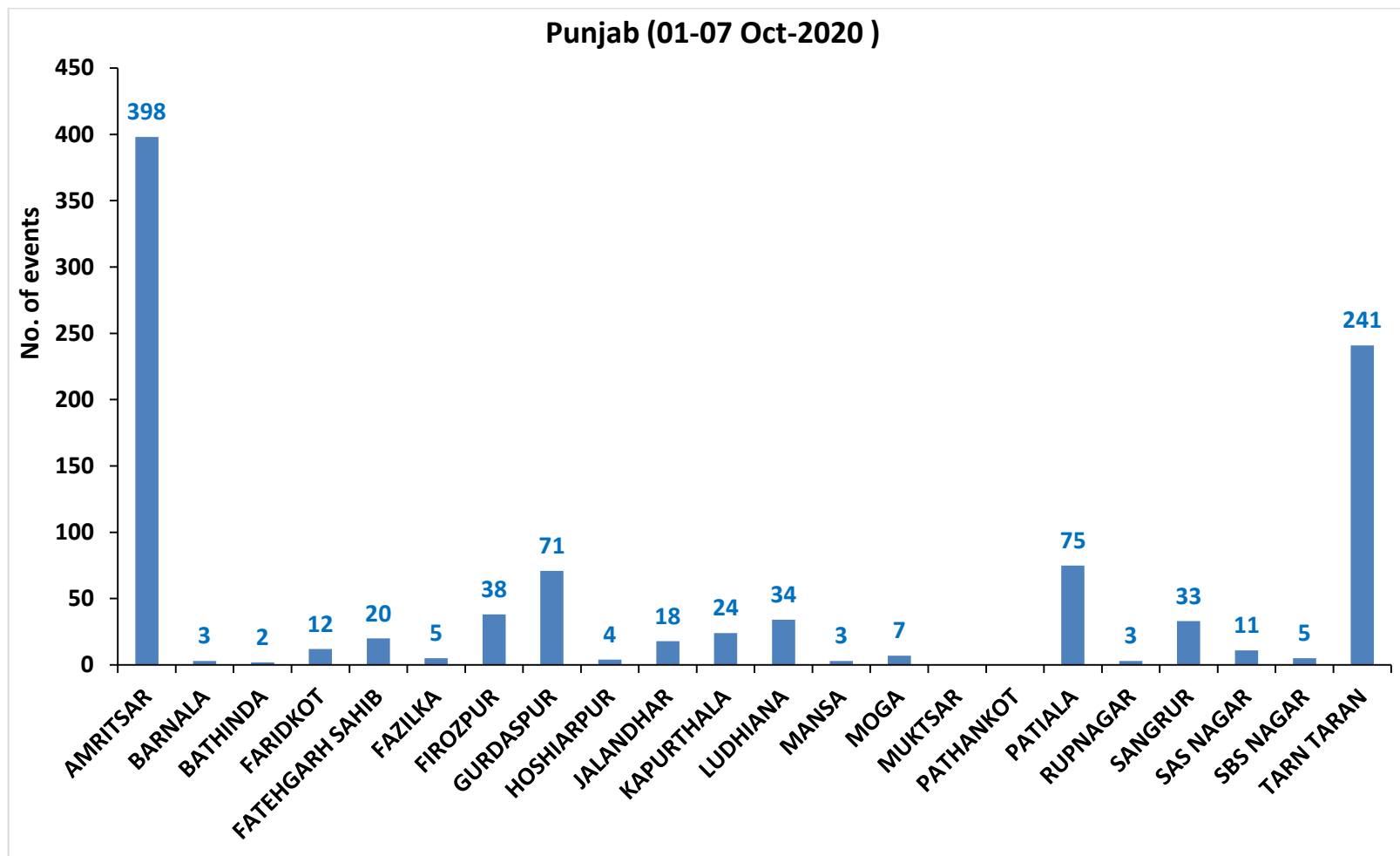
- 0 - 5
- 6 - 10
- 11 - 15
- 16 - 20
- >20

©ICAR-IARI



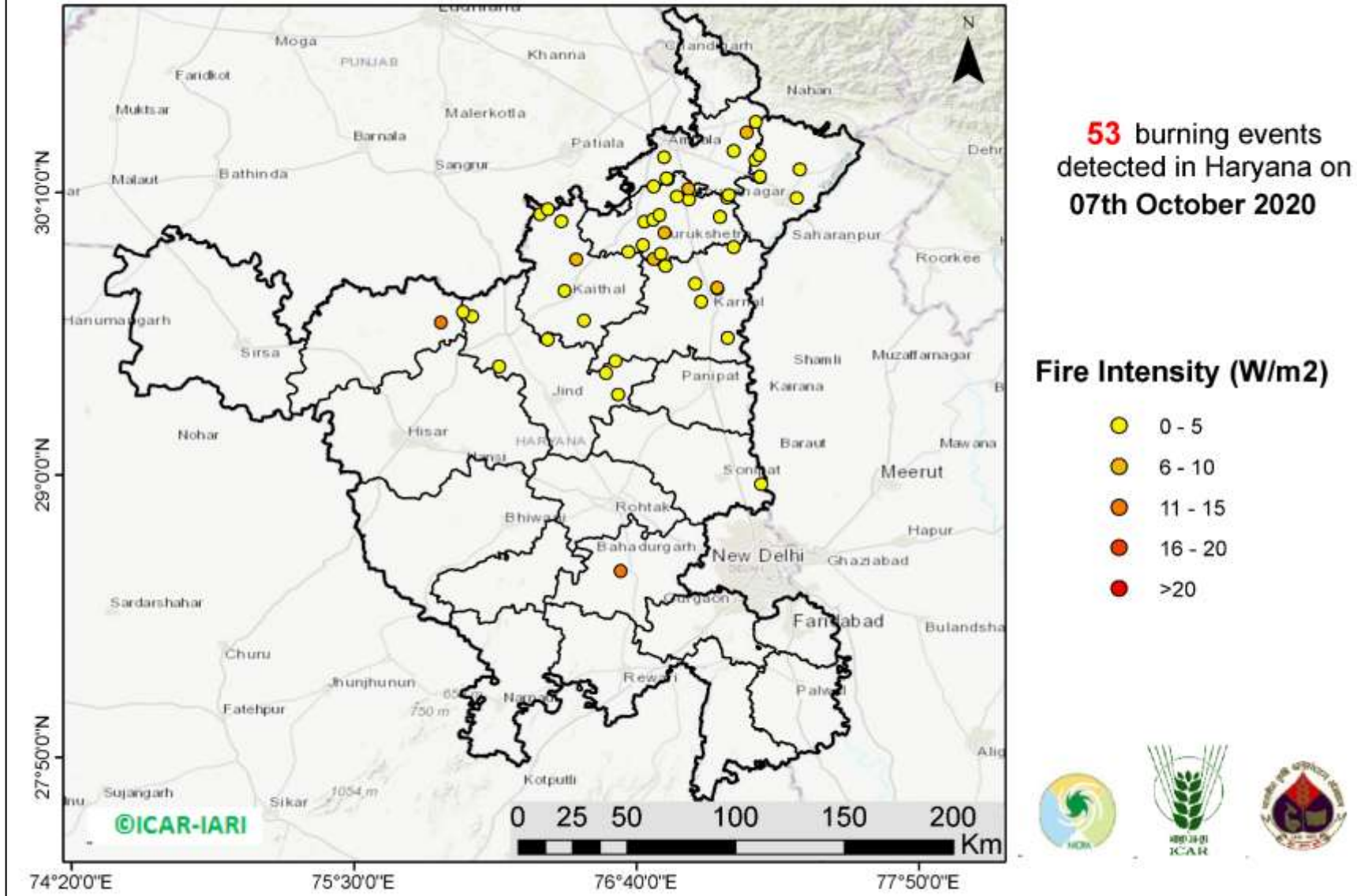
<http://geoportal.icar.gov.in:8080/geoexplorer/composer/>

District-wise cumulative number of residue burning events in Punjab (01-07 Oct-2020)



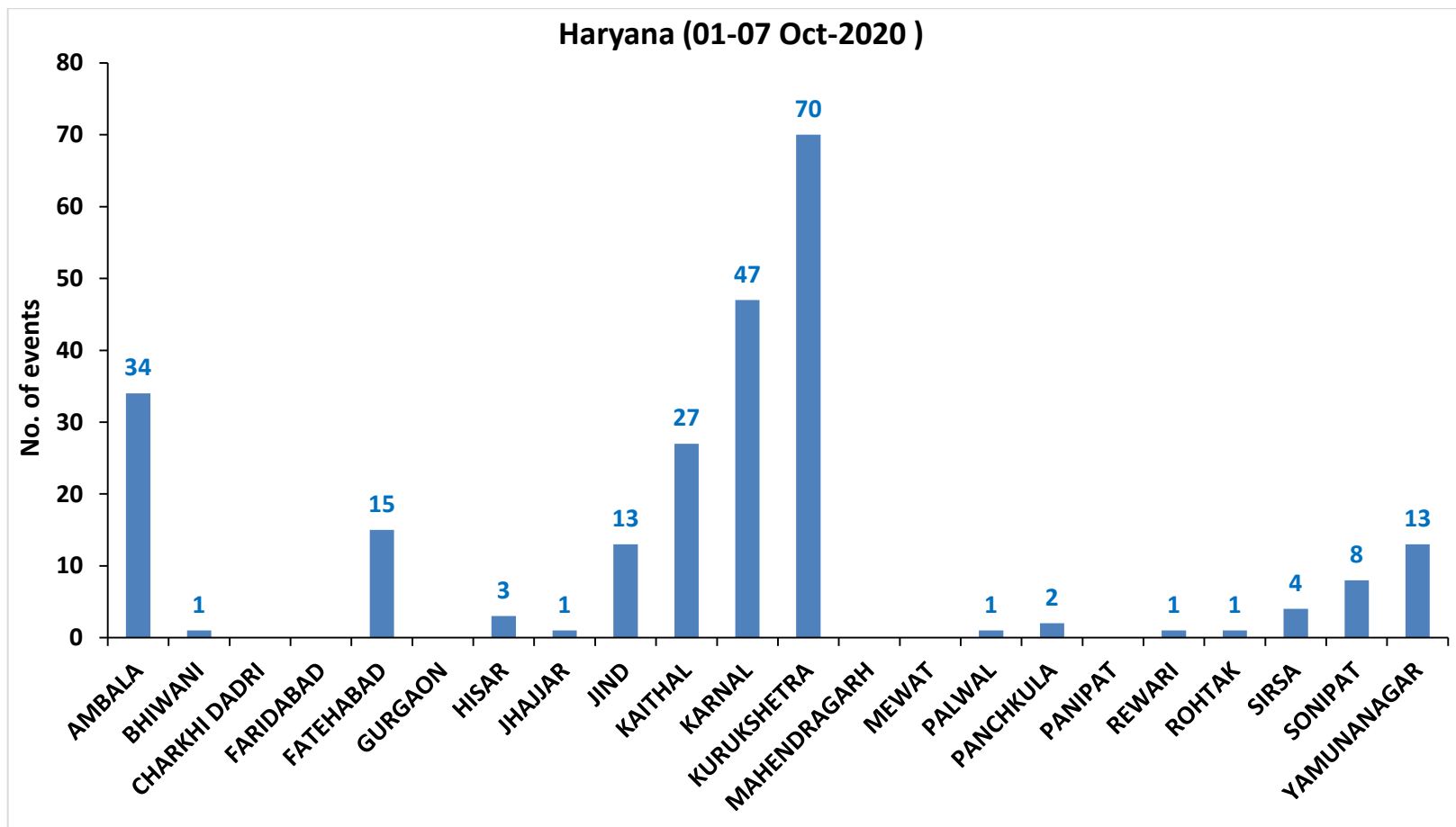
(b) Haryana

RICE RESIDUE BURNING IN HARYANA



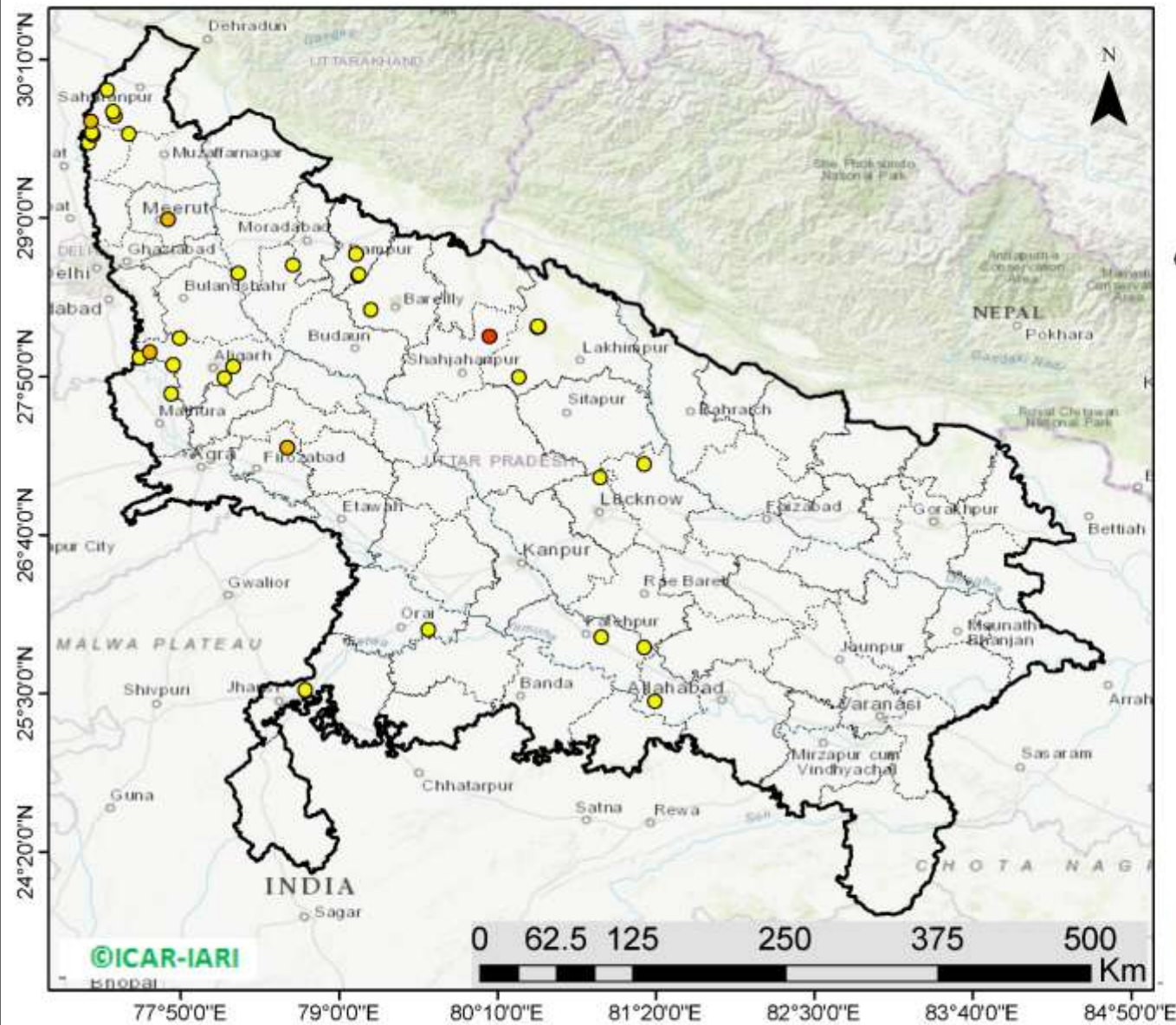
<http://geoportal.icar.gov.in:8080/geoexplorer/composer/>

District-wise cumulative number of residue burning events in Haryana (01-07 Oct-2020)



(c) Uttar Pradesh

RICE RESIDUE BURNING IN UTTAR PRADESH



36 burning events detected in Uttar Pradesh on 07th October 2020

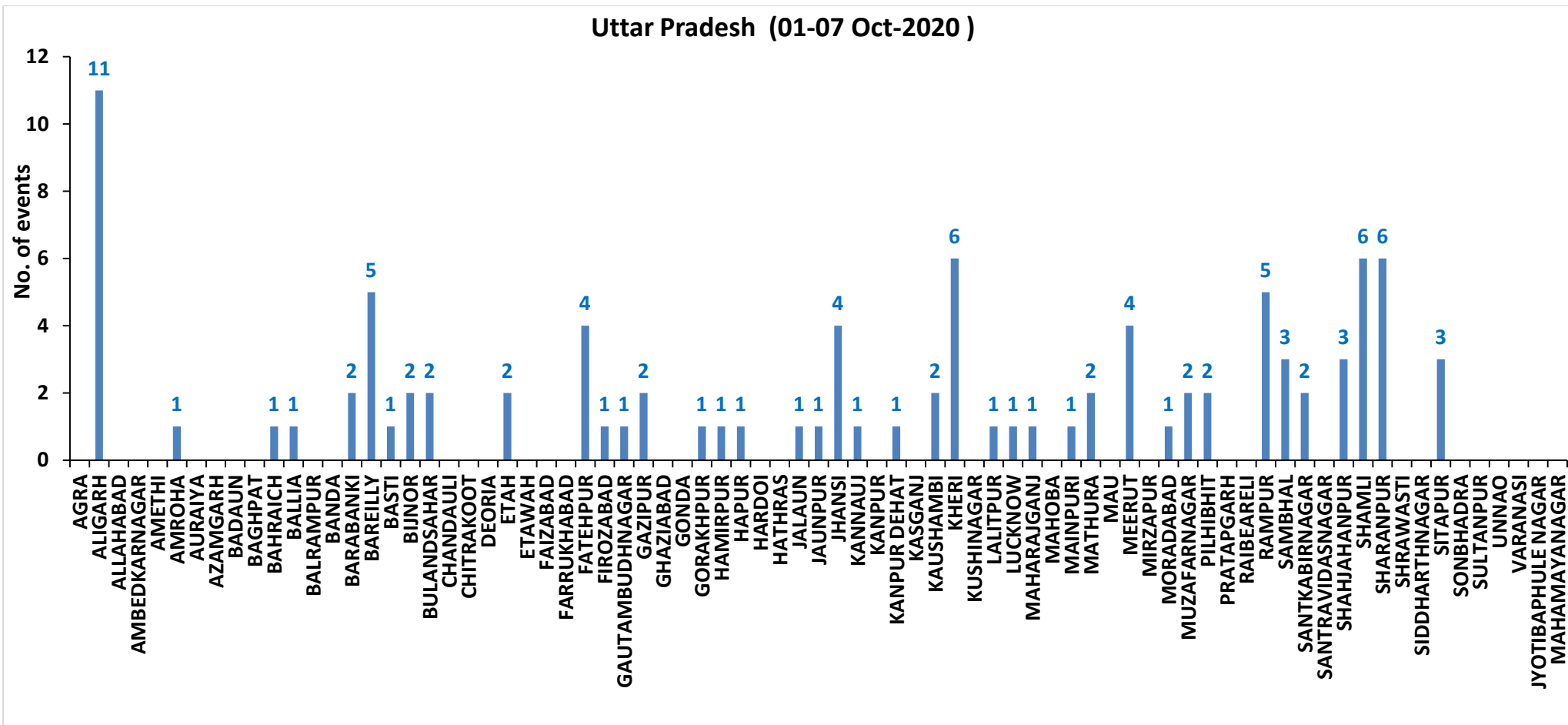
Fire Intensity (W/m²)

- 0 - 5
- 6 - 10
- 11 - 15
- 16 - 20
- >20



<http://geoportal.icar.gov.in:8080/geoexplorer/composer/>

District-wise cumulative number of residue burning events in Uttar Pradesh (01-07 Oct-2020)



State-wise and date-wise number of residue burning events detected in 2016, 2017, 2018, 2019 and 2020
(Period: 01-07 October)

Date	Punjab					Haryana					UP					Total				
	2020	2019	2018	2017	2016	2020	2019	2018	2017	2016	2020	2019	2018	2017	2016	2020	2019	2018	2017	2016
01-Oct	129	3	16	54	109	25	1	9	13	46	5	1	11	2	23	159	5	36	69	178
02-Oct	121	20	9	50	51	34	2	23	27	16	10	0	21	8	20	165	22	53	85	87
03-Oct	110	37	4	62	66	07	16	9	40	16	07	3	12	17	16	124	56	25	119	98
04-Oct	177	3	32	103	37	50	30	16	60	7	11	4	5	22	15	238	37	53	185	59
05-Oct	163	16	56	106	95	30	37	30	68	15	15	11	10	20	14	208	64	96	194	124
06-Oct	141	0	87	138	152	42	22	63	75	105	14	8	13	39	6	197	30	163	252	263
07-Oct	166	27	162	105	171	53	16	180	97	126	36	4	69	33	24	255	47	411	235	321
Total	1007	106	366	618	681	241	124	330	380	331	98	31	141	141	118	1346	261	837	1139	1130

District-wise and date wise cumulative number of residue burning events detected in 2016, 2017, 2018, 2019 and 2020
(Period: 01-07 October)

(a) Punjab

Districts	01-07 Oct				
	2016	2017	2018	2019	2020
AMRITSAR	222	246	213	50	398
BARNALA	1	1	0	0	3
BATHINDA	12	9	12	0	2
FARIDKOT	18	20	0	0	12
FATEHGARH SAHIB	43	11	5	0	20
FAZILKA	0	0	0	1	5
FIROZPUR	37	38	13	1	38
GURDASPUR	17	14	17	4	71
HOSHIARPUR	5	3	3	1	4
JALANDHAR	37	11	0	2	18
KAPURTHALA	30	4	1	0	24
LUDHIANA	24	46	13	2	34
MANSA	5	6	1	2	3
MOGA	4	2	0	2	7
MUKTSAR	22	4	2	1	0
PATHANKOT	0	0	0	0	0
PATIALA	50	46	24	9	75
RUPNAGAR	1	2	0	0	3
SANGRUR	13	32	17	1	33
SAS NAGAR	9	12	8	0	11
SBS NAGAR	11	3	2	2	5
TARN TARAN	120	108	35	28	241
Total	681	618	366	106	1007

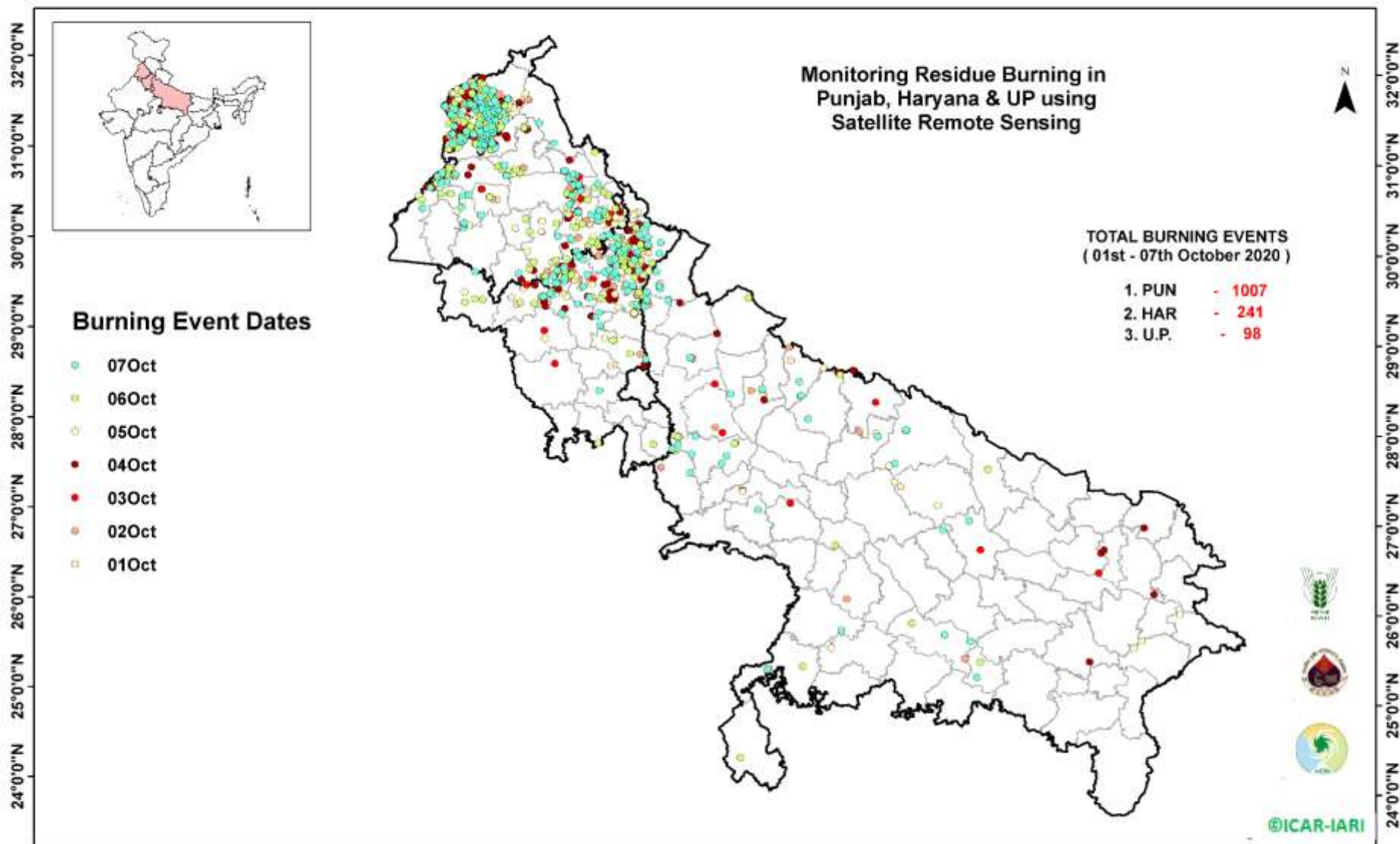
(b) Haryana

Districts	01-07 Oct				
	2016	2017	2018	2019	2020
AMBALA	21	31	25	1	34
BHIWANI	0	1	0	0	1
CHARKHI DADRI	0	0	0	0	0
FARIDABAD	1	0	11	1	0
FATEHABAD	4	21	5	3	15
GURGAON	0	0	0	0	0
HISAR	3	3	3	0	3
JHAJJAR	0	0	1	1	1
JIND	10	20	14	3	13
KAITHAL	80	57	40	25	27
KARNAL	127	122	90	60	47
KURUKSHETRA	70	100	95	24	70
MAHENDRAGARH	0	0	0	0	0
MEWAT	0	0	0	0	0
PALWAL	0	0	0	1	1
PANCHKULA	0	0	3	1	2
PANIPAT	4	9	20	1	0
REWARI	0	0	0	0	1
ROHTAK	0	0	0	0	1
SIRSA	7	1	4	0	4
SONIPAT	0	3	3	0	8
YAMUNANAGAR	4	12	16	3	13
Total	331	380	330	124	241

(C)
Uttar Pradesh

Districts	01-07 Oct																
	2016	2017	2018	2019	2020	GAUTAMBUDHNAGAR						MUZAFARNAGAR					
							0	0	0	0	1		0	2	1	1	2
AGRA	0	0	0	0	0	GAZIPUR	1	0	1	0	2	PILHIBHIT	3	8	2	0	2
ALIGARH	0	2	4	0	11	GHAZIABAD	0	0	0	0	0	PRATAPGARH	7	11	8	6	0
ALLAHABAD	0	0	3	0	0	GONDA	0	1	2	0	0	RAIBEARELI	0	0	0	0	0
AMBEDKARNAGAR	0	0	0	0	0	GORAKHPUR	0	0	0	0	1	RAMPUR	0	0	0	0	5
AMETHI	0	0	0	0	0	HAMIRPUR	0	0	3	0	1	SAMBHAL	40	13	15	1	3
AMROHA	0	0	0	0	1	HAPUR	0	0	1	0	1	SANTKABIRNAGAR	2	1	4	0	2
AURAIYA	19	12	11	0	0	HARDOI	0	0	0	0	0	SANTRAVIDASNAGAR	0	0	0	1	0
AZAMGARH	0	0	0	0	0	HATHRAS	0	0	1	0	0	SHAHJAHANPUR	0	0	0	0	3
BADAUN	0	0	0	0	0	JALAUN	0	0	0	0	1	SHAMLI	25	63	40	4	6
BAGHPAT	0	0	0	0	0	JAUNPUR	0	0	0	0	1	SHARANPUR	0	0	0	2	6
BAHRAICH	0	0	0	0	1	JHANSI	0	0	0	0	4	SHRAWASTI	0	0	0	0	0
BALLIA	0	0	0	0	1	KANNAUJ	0	0	0	0	1	SIDDHARTHANAGAR	0	0	0	0	0
BALRAMPUR	0	0	0	0	0	KANPUR	0	0	0	0	0	SITAPUR	3	0	1	0	3
BANDA	0	0	1	0	0	KANPUR DEHAT	0	0	0	0	1	SONBHADRA	3	1	2	0	0
BARABANKI	2	0	6	0	2	KASGANJ	0	0	0	0	0	SULTANPUR	0	0	0	0	0
BAREILLY	6	0	3	3	5	KAUSHAMBI	0	0	0	0	2	UNNAO	0	0	0	0	0
BASTI	0	0	0	0	1	KHERI	0	1	5	0	6	VARANASI	0	0	0	0	0
BIJNOR						KUSHINAGAR						JYOTIBAPHULE NAGAR					
	0	0	0	0	2		4	19	8	6	0		0	0	0	0	0
BULANDSAHAR	0	0	1	0	2	LALITPUR	0	0	0	0	1	MAHAMAYANAGAR	0	0	0	0	0
CHANDAULI	0	1	2	0	0	LUCKNOW	0	0	0	0	1	Total	118	141	141	31	98
CHITRAKOOT	0	0	0	0	0	MAHARAJGANJ	2	2	0	1	1						
DEORIA	0	0	0	0	0	MAHOBA	0	0	0	0	0						
ETAH	0	0	0	0	2	MAINPURI	0	0	0	0	1						
ETAWAH	0	1	1	0	0	MATHURA	0	0	1	0	2						
FAIZABAD	0	0	0	0	0	MAU	1	1	12	2	0						
FARRUKHABAD	0	1	0	0	0	MEERUT	0	0	0	0	4						
FATEHPUR	0	0	0	0	4	MIRZAPUR	0	0	0	1	0						
FIROZABAD	0	0	1	0	1	MORADABAD	0	1	1	3	1						

Map of Cumulative Burning Events (01-07 Oct 2020)



[\(http://geoportal.icar.gov.in:8080/geoexplorer/composer/\)](http://geoportal.icar.gov.in:8080/geoexplorer/composer/)

Details of residue burning events in Punjab on 07-Oct-2020

S. No.	District	Tehsil / Block	Satellite	Longitude	Latitude	Time (IST)	Day / Night	Fire Power (W/m ²)
1	AMRITSAR	AJNALA	S-NPP	74.66135	31.67074	13:18:00	D	4.00
2	AMRITSAR	AJNALA	S-NPP	74.66046	31.67431	13:18:00	D	4.00
3	AMRITSAR	AJNALA	S-NPP	74.63843	31.68153	13:18:00	D	3.80
4	AMRITSAR	AJNALA	S-NPP	74.51938	31.69786	13:18:00	D	6.70
5	AMRITSAR	AJNALA	S-NPP	74.52428	31.69877	13:18:00	D	6.70
6	AMRITSAR	AJNALA	S-NPP	74.80148	31.73322	13:18:00	D	2.40
7	AMRITSAR	AJNALA	S-NPP	74.79816	31.73436	13:18:00	D	2.00
8	AMRITSAR	AJNALA	S-NPP	74.84435	31.74088	13:18:00	D	3.20
9	AMRITSAR	AJNALA	S-NPP	74.92988	31.80273	13:18:00	D	2.20
10	AMRITSAR	AJNALA	S-NPP	74.77207	31.92758	13:18:00	D	4.50
11	AMRITSAR	AJNALA	S-NPP	74.87822	31.93921	13:18:00	D	5.20
12	AMRITSAR	AMRITSAR I	AQUA	74.97000	31.51600	13:30:00	D	13.20
13	AMRITSAR	AMRITSAR I	S-NPP	75.08775	31.58362	13:18:00	D	3.60
14	AMRITSAR	AMRITSAR I	S-NPP	75.04094	31.61564	13:18:00	D	2.80
15	AMRITSAR	AMRITSAR I	AQUA	75.05300	31.66500	13:30:00	D	9.10
16	AMRITSAR	AMRITSAR I	AQUA	75.04800	31.68500	13:30:00	D	14.40
17	AMRITSAR	AMRITSAR I	AQUA	75.05600	31.68600	13:30:00	D	23.00
18	AMRITSAR	AMRITSAR I	AQUA	75.06100	31.68800	13:30:00	D	44.30
19	AMRITSAR	AMRITSAR I	S-NPP	75.05739	31.69430	13:18:00	D	10.80
20	AMRITSAR	AMRITSAR I	S-NPP	75.06205	31.69514	13:18:00	D	10.80
21	AMRITSAR	AMRITSAR I	S-NPP	74.98708	31.72211	13:18:00	D	1.70
22	AMRITSAR	AMRITSAR I	S-NPP	75.02458	31.72883	13:18:00	D	8.40
23	AMRITSAR	AMRITSAR I	AQUA	75.03100	31.73300	13:30:00	D	6.80
24	AMRITSAR	AMRITSAR I	S-NPP	74.99388	31.73437	13:18:00	D	4.90
25	AMRITSAR	AMRITSAR I	AQUA	75.02800	31.74300	13:30:00	D	10.60
26	AMRITSAR	AMRITSAR I	S-NPP	75.07338	31.74855	13:18:00	D	5.10
27	AMRITSAR	AMRITSAR I	S-NPP	75.10596	31.75435	13:18:00	D	1.70
28	AMRITSAR	AMRITSAR I	S-NPP	74.97527	31.77778	13:18:00	D	7.10
29	AMRITSAR	AMRITSAR I	AQUA	74.97600	31.81700	13:30:00	D	16.00
30	AMRITSAR	AMRITSAR II	S-NPP	74.74015	31.60977	13:18:00	D	2.20
31	AMRITSAR	AMRITSAR II	S-NPP	74.60502	31.61175	13:18:00	D	2.80

32	AMRITSAR	AMRITSAR II	AQUA	74.93300	31.67400	13:30:00	D	10.40
33	AMRITSAR	AMRITSAR II	S-NPP	74.91479	31.67587	13:18:00	D	3.00
34	AMRITSAR	AMRITSAR II	AQUA	74.98700	31.68400	13:30:00	D	13.20
35	AMRITSAR	AMRITSAR II	AQUA	75.00000	31.68600	13:30:00	D	43.20
36	AMRITSAR	AMRITSAR II	S-NPP	75.00041	31.68769	13:18:00	D	15.60
37	AMRITSAR	AMRITSAR II	S-NPP	74.89017	31.71579	13:18:00	D	4.90
38	AMRITSAR	AMRITSAR II	S-NPP	74.88931	31.71933	13:18:00	D	4.10
39	AMRITSAR	AMRITSAR II	S-NPP	74.84660	31.73954	13:18:00	D	4.00
40	AMRITSAR	BABA BAKALA	S-NPP	75.13452	31.56351	13:18:00	D	10.20
41	AMRITSAR	BABA BAKALA	S-NPP	75.11065	31.56940	13:18:00	D	11.80
42	AMRITSAR	BABA BAKALA	S-NPP	75.30128	31.57106	13:18:00	D	1.40
43	AMRITSAR	BABA BAKALA	S-NPP	75.17460	31.57792	13:18:00	D	4.70
44	AMRITSAR	BABA BAKALA	S-NPP	75.08347	31.60122	13:18:00	D	8.30
45	AMRITSAR	BABA BAKALA	S-NPP	75.11816	31.61846	13:18:00	D	8.80
46	AMRITSAR	BABA BAKALA	S-NPP	75.17470	31.62491	13:18:00	D	2.10
47	AMRITSAR	BABA BAKALA	S-NPP	75.13969	31.62964	13:18:00	D	2.60
48	AMRITSAR	BABA BAKALA	S-NPP	75.06090	31.63391	13:18:00	D	5.00
49	AMRITSAR	BABA BAKALA	S-NPP	75.10839	31.63871	13:18:00	D	10.60
50	AMRITSAR	BABA BAKALA	AQUA	75.16800	31.64400	13:30:00	D	6.60
51	AMRITSAR	BABA BAKALA	S-NPP	75.18810	31.64924	13:18:00	D	1.70
52	AMRITSAR	BABA BAKALA	S-NPP	75.26184	31.66232	13:18:00	D	10.90
53	AMRITSAR	BABA BAKALA	AQUA	75.16300	31.66400	13:30:00	D	21.20
54	AMRITSAR	BABA BAKALA	S-NPP	75.20818	31.68566	13:18:00	D	2.70
55	AMRITSAR	BABA BAKALA	S-NPP	75.20733	31.68915	13:18:00	D	4.90
56	AMRITSAR	BABA BAKALA	S-NPP	75.19319	31.73333	13:18:00	D	2.20
57	BATHINDA	BATHINDA	AQUA	74.81500	30.36300	13:25:00	D	10.10
58	BATHINDA	TALWANDI SABO	METOP-2	74.98768	29.88568	20:29:00	N	7.00
59	FARIDKOT	FARIDKOT	S-NPP	74.77833	30.58937	13:18:00	D	4.60
60	FARIDKOT	FARIDKOT	AQUA	74.79400	30.72000	13:25:00	D	8.40
61	FARIDKOT	FARIDKOT	S-NPP	74.87201	30.73462	13:18:00	D	3.10
62	FARIDKOT	JAITO	S-NPP	74.82605	30.41389	13:18:00	D	2.70
63	FARIDKOT	JAITO	S-NPP	74.82516	30.41751	13:18:00	D	2.70
64	FATEHGARH SAHIB	ALMOH	S-NPP	76.16979	30.66100	13:18:00	D	2.80

65	FATEHGARH SAHIB	FATEHGARH SAHIB	S-NPP	76.44444	30.55305	13:18:00	D	2.70
66	FATEHGARH SAHIB	FATEHGARH SAHIB	S-NPP	76.27801	30.57794	13:18:00	D	3.00
67	FATEHGARH SAHIB	FATEHGARH SAHIB	S-NPP	76.27838	30.58006	13:18:00	D	5.10
68	FATEHGARH SAHIB	KHAMANOH	S-NPP	76.29837	30.81898	13:18:00	D	5.00
69	FAZILKA	JALALABAD	S-NPP	74.28491	30.56107	13:18:00	D	3.80
70	FAZILKA	JALALABAD	AQUA	74.37600	30.79300	13:25:00	D	10.90
71	FIROZPUR	FIROZPUR	S-NPP	74.50622	30.84067	13:18:00	D	3.60
72	FIROZPUR	FIROZPUR	S-NPP	74.58217	30.86997	13:18:00	D	17.10
73	FIROZPUR	FIROZPUR	AQUA	74.46200	30.92200	13:25:00	D	14.70
74	FIROZPUR	FIROZPUR	S-NPP	74.68887	30.94965	13:18:00	D	5.60
75	FIROZPUR	FIROZPUR	S-NPP	74.69102	30.95037	13:18:00	D	12.10
76	FIROZPUR	FIROZPUR	S-NPP	74.52310	30.95291	13:18:00	D	4.00
77	FIROZPUR	FIROZPUR	S-NPP	74.68797	30.95325	13:18:00	D	6.10
78	FIROZPUR	FIROZPUR	S-NPP	74.51634	30.95926	13:18:00	D	5.50
79	FIROZPUR	ZIRA	S-NPP	75.34357	30.95683	13:18:00	D	4.70
80	FIROZPUR	ZIRA	S-NPP	75.34657	30.95784	13:18:00	D	5.50
81	GURDASPUR	BATALA	S-NPP	75.18810	31.75432	13:18:00	D	6.80
82	GURDASPUR	BATALA	S-NPP	75.10511	31.75786	13:18:00	D	3.90
83	GURDASPUR	BATALA	S-NPP	75.10976	31.75868	13:18:00	D	4.00
84	GURDASPUR	BATALA	S-NPP	75.16196	31.78255	13:18:00	D	2.40
85	GURDASPUR	BATALA	S-NPP	75.33070	31.79771	13:18:00	D	10.10
86	GURDASPUR	BATALA	S-NPP	75.32986	31.80119	13:18:00	D	10.10
87	GURDASPUR	BATALA	S-NPP	75.10994	31.86433	13:18:00	D	4.90
88	GURDASPUR	BATALA	S-NPP	75.13725	31.89108	13:18:00	D	10.20
89	GURDASPUR	BATALA	S-NPP	75.03456	31.90112	13:18:00	D	1.70
90	HOSHIARPUR	GARHSHANKAR	AQUA	75.94300	31.33200	13:30:00	D	8.10
91	HOSHIARPUR	HOSHIARPUR	S-NPP	75.74121	31.54999	13:18:00	D	7.20
92	JALANDHAR	SHAHKOT	S-NPP	75.31271	31.07490	13:18:00	D	2.80
93	KAPURTHALA	SULTANPUR LODHI	S-NPP	75.19299	31.26420	13:18:00	D	10.60
94	KAPURTHALA	SULTANPUR LODHI	AQUA	75.14800	31.31100	13:30:00	D	10.60
95	KAPURTHALA	SULTANPUR LODHI	S-NPP	75.14681	31.31470	13:18:00	D	3.80
96	LUDHIANA	SAMRALA	S-NPP	76.19421	30.76000	13:18:00	D	2.10
97	LUDHIANA	SAMRALA	AQUA	76.21400	30.87500	13:25:00	D	34.20

98	LUDHIANA	SAMRALA	AQUA	76.27600	30.87600	13:25:00	D	21.40
99	LUDHIANA	SAMRALA	S-NPP	76.27495	30.88226	13:18:00	D	2.50
100	LUDHIANA	SAMRALA	S-NPP	76.14322	30.95118	13:18:00	D	2.80
101	LUDHIANA	SAMRALA	S-NPP	76.23380	30.98789	13:18:00	D	7.10
102	LUDHIANA	SAMRALA	S-NPP	76.19608	30.99567	13:18:00	D	7.20
103	LUDHIANA	SAMRALA	S-NPP	76.19627	30.99804	13:18:00	D	2.90
104	MANSA	BUDHLADA	S-NPP	75.53637	29.87939	13:18:00	D	25.00
105	MOGA	BAGHA PURANA	S-NPP	75.03717	30.51276	13:18:00	D	5.80
106	PATIALA	RAJPURA	S-NPP	76.60715	30.31368	13:18:00	D	3.20
107	PATIALA	RAJPURA	S-NPP	76.68258	30.33002	13:18:00	D	2.40
108	PATIALA	RAJPURA	S-NPP	76.53634	30.49485	13:18:00	D	1.70
109	PATIALA	RAJPURA	S-NPP	76.53162	30.53963	13:18:00	D	5.00
110	PATIALA	RAJPURA	S-NPP	76.59620	30.58574	13:18:00	D	2.70
111	PATIALA	RAJPURA	S-NPP	76.54417	30.60162	13:18:00	D	3.20
112	PATIALA	SAMANA	AQUA	76.12600	29.80800	13:25:00	D	8.30
113	PATIALA	SAMANA	S-NPP	76.12697	29.83783	13:18:00	D	2.90
114	PATIALA	SAMANA	S-NPP	76.03036	29.92259	13:18:00	D	2.90
115	PATIALA	SAMANA	AQUA	76.11700	29.96200	13:25:00	D	9.50
116	PATIALA	SAMANA	S-NPP	76.27863	30.13916	13:18:00	D	5.20
117	RUPNAGAR	RUPNAGAR	S-NPP	76.52498	30.89629	13:18:00	D	5.20
118	SANGRUR	MOONAK	S-NPP	76.02948	29.78109	13:18:00	D	3.10
119	SANGRUR	MOONAK	S-NPP	76.01900	29.78648	13:18:00	D	4.80
120	SANGRUR	MOONAK	AQUA	75.87800	29.78700	13:25:00	D	8.40
121	SANGRUR	MOONAK	AQUA	75.88400	29.78800	13:25:00	D	13.10
122	SANGRUR	MOONAK	S-NPP	75.88750	29.79230	13:18:00	D	9.20
123	SANGRUR	MOONAK	S-NPP	75.89199	29.79310	13:18:00	D	9.20
124	SANGRUR	MOONAK	S-NPP	75.98289	29.86332	13:18:00	D	10.00
125	SANGRUR	SANGRUR	S-NPP	76.18943	30.28459	13:18:00	D	5.40
126	SANGRUR	SANGRUR	S-NPP	76.02555	30.30291	13:18:00	D	3.50
127	SBS NAGAR	SBS NAGAR	AQUA	76.08800	31.02500	13:25:00	D	14.80
128	SBS NAGAR	SBS NAGAR	AQUA	76.08000	31.02800	13:25:00	D	6.70
129	SBS NAGAR	SBS NAGAR	AQUA	76.09200	31.03000	13:25:00	D	9.00
130	SBS NAGAR	SBS NAGAR	S-NPP	76.08897	31.03284	13:18:00	D	6.70

131	TARN TARAN	KHADOOR SAHIB	S-NPP	75.00008	31.23286	13:18:00	D	14.40
132	TARN TARAN	KHADOOR SAHIB	AQUA	74.99900	31.23300	13:30:00	D	8.20
133	TARN TARAN	KHADOOR SAHIB	S-NPP	75.05107	31.28648	13:18:00	D	9.20
134	TARN TARAN	KHADOOR SAHIB	S-NPP	75.00435	31.29657	13:18:00	D	5.30
135	TARN TARAN	KHADOOR SAHIB	S-NPP	75.04764	31.30064	13:18:00	D	2.10
136	TARN TARAN	KHADOOR SAHIB	S-NPP	75.06122	31.35334	13:18:00	D	6.30
137	TARN TARAN	KHADOOR SAHIB	S-NPP	75.07357	31.36295	13:18:00	D	3.30
138	TARN TARAN	KHADOOR SAHIB	S-NPP	75.01376	31.36688	13:18:00	D	2.10
139	TARN TARAN	KHADOOR SAHIB	AQUA	75.07100	31.37900	13:30:00	D	8.60
140	TARN TARAN	KHADOOR SAHIB	S-NPP	75.06757	31.38767	13:18:00	D	9.80
141	TARN TARAN	KHADOOR SAHIB	S-NPP	75.02829	31.38797	13:18:00	D	2.50
142	TARN TARAN	KHADOOR SAHIB	AQUA	75.02600	31.39200	13:30:00	D	11.30
143	TARN TARAN	KHADOOR SAHIB	AQUA	74.90400	31.40200	13:30:00	D	7.80
144	TARN TARAN	KHADOOR SAHIB	S-NPP	75.00168	31.41643	13:18:00	D	18.80
145	TARN TARAN	KHADOOR SAHIB	S-NPP	75.11306	31.42159	13:18:00	D	2.80
146	TARN TARAN	KHADOOR SAHIB	S-NPP	75.08329	31.42364	13:18:00	D	2.50
147	TARN TARAN	KHADOOR SAHIB	S-NPP	75.15587	31.42556	13:18:00	D	3.60
148	TARN TARAN	KHADOOR SAHIB	S-NPP	75.15501	31.42908	13:18:00	D	3.60
149	TARN TARAN	KHADOOR SAHIB	S-NPP	74.99737	31.43413	13:18:00	D	5.80
150	TARN TARAN	KHADOOR SAHIB	S-NPP	74.81113	31.43515	13:18:00	D	8.20
151	TARN TARAN	KHADOOR SAHIB	S-NPP	75.08876	31.46140	13:18:00	D	5.80
152	TARN TARAN	KHADOOR SAHIB	S-NPP	75.15199	31.46156	13:18:00	D	3.40
153	TARN TARAN	KHADOOR SAHIB	S-NPP	75.15579	31.46590	13:18:00	D	4.80
154	TARN TARAN	KHADOOR SAHIB	S-NPP	75.11859	31.46891	13:18:00	D	3.70
155	TARN TARAN	KHADOOR SAHIB	AQUA	75.05600	31.47000	13:30:00	D	12.10
156	TARN TARAN	KHADOOR SAHIB	AQUA	75.07000	31.47200	13:30:00	D	12.20
157	TARN TARAN	KHADOOR SAHIB	AQUA	74.64800	31.48000	13:30:00	D	11.00
158	TARN TARAN	KHADOOR SAHIB	S-NPP	75.13590	31.49774	13:18:00	D	3.40
159	TARN TARAN	PATTI	S-NPP	74.63860	31.28328	13:18:00	D	6.10
160	TARN TARAN	PATTI	S-NPP	74.75812	31.31282	13:18:00	D	1.60
161	TARN TARAN	PATTI	S-NPP	74.72868	31.32988	13:18:00	D	3.40
162	TARN TARAN	PATTI	S-NPP	74.78175	31.33957	13:18:00	D	7.90
163	TARN TARAN	PATTI	S-NPP	74.78088	31.34315	13:18:00	D	4.00

164	TARN TARAN	PATTI	S-NPP	74.74096	31.36205	13:18:00	D	3.70
165	TARN TARAN	PATTI	AQUA	74.63000	31.39500	13:30:00	D	27.40
166	TARN TARAN	PATTI	S-NPP	74.63331	31.39873	13:18:00	D	1.90

Details of residue burning events in Haryana on 07-Oct-2020

S. No.	District	Tehsil / Block	Satellite	Longitude	Latitude	Time (IST)	Day / Night	Fire Power (W/m ²)
1	AMBALA	AMBALA	AQUA	76.79600	30.22100	13:25:00	D	8.00
2	AMBALA	AMBALA	S-NPP	76.79119	30.22536	13:18:00	D	4.20
3	AMBALA	AMBALA	S-NPP	76.78140	30.31128	13:18:00	D	2.80
4	AMBALA	BARARA	S-NPP	77.04217	30.14393	13:18:00	D	3.30
5	AMBALA	BARARA	S-NPP	77.04826	30.15538	13:18:00	D	2.90
6	AMBALA	BARARA	S-NPP	77.15883	30.30081	13:18:00	D	2.30
7	AMBALA	BARARA	S-NPP	77.17579	30.32096	13:18:00	D	2.50
8	AMBALA	BARARA	S-NPP	77.06940	30.33812	13:18:00	D	1.70
9	AMBALA	NARAYANGARH	AQUA	77.12200	30.41400	13:25:00	D	6.60
10	AMBALA	NARAYANGARH	S-NPP	77.15992	30.45849	13:18:00	D	4.30
11	FATEHABAD	TOHANA	AQUA	75.86000	29.62900	13:25:00	D	11.90
12	JHAJJAR	JHAJJAR	S-NPP	76.60151	28.60311	13:18:00	D	12.00
13	JIND	NARWANA	S-NPP	76.09953	29.44827	13:18:00	D	1.90
14	JIND	NARWANA	S-NPP	75.98589	29.65335	13:18:00	D	1.20
15	JIND	NARWANA	S-NPP	75.98784	29.65360	13:18:00	D	3.10
16	JIND	NARWANA	S-NPP	75.95097	29.67246	13:18:00	D	1.70
17	JIND	SAFIDON	S-NPP	76.59139	29.33090	13:18:00	D	2.00
18	JIND	SAFIDON	S-NPP	76.54003	29.42173	13:18:00	D	2.80
19	KAITHAL	GUHLA	S-NPP	76.35703	30.04690	13:18:00	D	1.90
20	KAITHAL	GUHLA	S-NPP	76.27013	30.07706	13:18:00	D	4.30
21	KAITHAL	GUHLA	S-NPP	76.30177	30.09677	13:18:00	D	2.90
22	KAITHAL	KAITHAL	S-NPP	76.29983	29.55894	13:18:00	D	1.20
23	KAITHAL	KAITHAL	S-NPP	76.45033	29.63676	13:18:00	D	2.10
24	KAITHAL	KAITHAL	S-NPP	76.37047	29.76009	13:18:00	D	5.00
25	KAITHAL	KAITHAL	AQUA	76.41700	29.88900	13:25:00	D	5.80
26	KARNAL	ASSANDH	S-NPP	76.57935	29.46990	13:18:00	D	3.70
27	KARNAL	GHARAUNDA	S-NPP	77.04402	29.56605	13:18:00	D	2.10
28	KARNAL	INDRI	S-NPP	77.06824	29.94115	13:18:00	D	4.20
29	KARNAL	KARNAL	S-NPP	76.93488	29.71606	13:18:00	D	4.40
30	KARNAL	KARNAL	AQUA	77.00200	29.76700	13:25:00	D	8.60

31	KARNAL	KARNAL	S-NPP	77.00111	29.76921	13:18:00	D	6.80
32	KARNAL	KARNAL	S-NPP	77.00037	29.77258	13:18:00	D	6.80
33	KARNAL	NILOKHERI	S-NPP	76.91020	29.78904	13:18:00	D	4.30
34	KARNAL	NILOKHERI	S-NPP	76.78648	29.86277	13:18:00	D	2.80
35	KURUKSHETRA	PEHOWA	S-NPP	76.63382	29.92138	13:18:00	D	4.60
36	KURUKSHETRA	PEHOWA	S-NPP	76.69369	29.94915	13:18:00	D	3.30
37	KURUKSHETRA	SHAHABAD	S-NPP	76.88482	30.13598	13:18:00	D	2.90
38	KURUKSHETRA	SHAHABAD	S-NPP	76.83431	30.14848	13:18:00	D	1.70
39	KURUKSHETRA	SHAHABAD	AQUA	76.88300	30.18000	13:25:00	D	7.80
40	KURUKSHETRA	SHAHABAD	S-NPP	76.73750	30.19185	13:18:00	D	2.60
41	KURUKSHETRA	THANESAR	AQUA	76.73800	29.89000	13:25:00	D	7.40
42	KURUKSHETRA	THANESAR	S-NPP	76.76759	29.91237	13:18:00	D	3.90
43	KURUKSHETRA	THANESAR	S-NPP	76.78331	29.99936	13:18:00	D	5.10
44	KURUKSHETRA	THANESAR	S-NPP	76.69932	30.04469	13:18:00	D	1.70
45	KURUKSHETRA	THANESAR	S-NPP	76.73660	30.05450	13:18:00	D	4.60
46	KURUKSHETRA	THANESAR	AQUA	77.01400	30.06500	13:25:00	D	8.20
47	KURUKSHETRA	THANESAR	S-NPP	77.01194	30.06570	13:18:00	D	4.00
48	KURUKSHETRA	THANESAR	S-NPP	76.76310	30.07302	13:18:00	D	3.00
49	SONIPAT	SONIPAT	S-NPP	77.18271	28.96135	13:18:00	D	2.10
50	YAMUNANAGAR	CHHACHHRAULII	S-NPP	77.34154	30.26043	13:18:00	D	3.10
51	YAMUNANAGAR	JAGADHRI	S-NPP	77.32838	30.14239	13:18:00	D	4.10
52	YAMUNANAGAR	JAGADHRI	S-NPP	77.17811	30.23015	13:18:00	D	1.80
53	YAMUNANAGAR	JAGADHRI	S-NPP	77.17738	30.23350	13:18:00	D	4.10

Details of residue burning events in Uttar Pradesh on 07-Oct-2020

S. No.	District	Tehsil / Block	Satellite	Longitude	Latitude	Time (IST)	Day / Night	Fire Power (W/m ²)
1	ALIGARH	GABHANA	S-NPP	77.82565	28.11455	02:00:00	N	0.70
2	ALIGARH	KHAIR	S-NPP	77.77650	27.91898	02:00:00	N	0.80
3	ALIGARH	KHAIR	S-NPP	77.53165	27.97099	13:18:00	D	2.80
4	ALIGARH	KHAIR	AQUA	77.60800	28.01400	13:25:00	D	7.60
5	ALIGARH	KOL	S-NPP	78.15800	27.82065	02:00:00	N	0.60
6	ALIGARH	KOL	S-NPP	78.21851	27.90556	02:00:00	N	0.70
7	AMROHA	HASANPUR	S-NPP	78.25681	28.59275	13:18:00	D	2.20
8	BARABANKI	FATEHPUR	S-NPP	81.24895	27.18639	13:18:00	D	2.30
9	BAREILLY	AONLA	S-NPP	79.23589	28.32142	13:18:00	D	1.30
10	FATEHPUR	FATEHPUR	S-NPP	80.93336	25.91516	13:18:00	D	3.20
11	FATEHPUR	KHAGA	S-NPP	81.24714	25.83854	13:18:00	D	2.30
12	FIROZABAD	JASRANA	NOAA-18	78.61766	27.30752	21:04:00	N	6.00
13	JALAUN	KALPI	S-NPP	79.65787	25.96865	13:18:00	D	2.70
14	JHANSI	JHANSI	S-NPP	78.75047	25.52517	13:18:00	D	2.30
15	KAUSHAMBI	MANJHANPUR	S-NPP	81.32762	25.43851	13:18:00	D	2.20
16	KHERI	GOLA	AQUA	80.46200	28.19700	13:25:00	D	16.70
17	KHERI	GOLA	AQUA	80.47200	28.19800	13:25:00	D	7.90
18	KHERI	GOLA	S-NPP	80.46471	28.20153	13:18:00	D	3.00
19	KHERI	MOHMADI	S-NPP	80.32461	27.82745	13:18:00	D	3.10
20	LUCKNOW	BAKSHIKA TALAB	S-NPP	80.92223	27.08520	13:18:00	D	1.30
21	MATHURA	MAT	S-NPP	77.76360	27.70750	02:00:00	N	0.50
22	MEERUT	MEERUT	S-NPP	77.73909	28.99043	13:18:00	D	5.40
23	RAMPUR	MILAK	S-NPP	79.13934	28.57428	13:18:00	D	2.60
24	RAMPUR	MILAK	S-NPP	79.14587	28.58208	13:18:00	D	1.50
25	RAMPUR	MILAK	S-NPP	79.12420	28.73444	13:18:00	D	3.00
26	SAMBHAL	SAMBHAL	S-NPP	78.65976	28.65270	13:18:00	D	2.50
27	SHAHJAHANPUR	PUWANYA	AQUA	80.10800	28.12800	13:25:00	D	18.20
28	SHAMLI	KAIRANA	S-NPP	77.15431	29.55301	13:18:00	D	3.20
29	SHAMLI	KAIRANA	AQUA	77.18700	29.61100	13:25:00	D	7.00
30	SHAMLI	KAIRANA	S-NPP	77.18108	29.62716	13:18:00	D	2.20
31	SHAMLI	SHAMLI	S-NPP	77.45038	29.61931	13:18:00	D	3.30

32	SHARANPUR	NAKUR	AQUA	77.17200	29.71000	13:25:00	D	7.60
33	SHARANPUR	NAKUR	AQUA	77.34700	29.74800	13:25:00	D	7.30
34	SHARANPUR	NAKUR	AQUA	77.33400	29.78100	13:25:00	D	7.90
35	SHARANPUR	NAKUR	S-NPP	77.33599	29.78308	13:18:00	D	3.90
36	SHARANPUR	NAKUR	S-NPP	77.29484	29.94019	13:18:00	D	2.60

The study used images received from following Satellites at IARI Satellite Ground Station

S. No.	Satellite Name	Sensor	Resolution (meter)	Day / Night Passes
1.	Suomi NPP	VIIRS	375 / 750	Both
2.	Terra	MODIS	1000	Both
3.	Aqua	MODIS	1000	Both
4.	NOAA – 18	AVHRR	1000	Night
5.	NOAA – 19	AVHRR	1000	Night
6.	Metop - 1	AVHRR	1000	Night
7.	Metop - 2	AVHRR	1000	Night

Study Team

ICAR – HQ	Dr K. Alagusundaram	DDG (AG. ENGG.)	ddgengg@icar.org.in
	Dr S. Bhasker	ADG (NRM)	adgagroandaf@gmail.com
	Dr K.K. Singh	ADG (AG. ENGG)	kanchansingh044@gmail.com
ICAR - IARI	Dr V.K. Sehgal	Professor & Nodal Scientist	iaricreams@gmail.com
	Dr Rajkumar Dhakar	Scientist	raidhakar.iari@gmail.com
	Mr Rakeswer Verma	Chief Technical Officer	rakeshwar.verma@icar.gov.in
	Mr Mohd Jahangir	Lab Assistant (KRISHI)	mjahangir198@gmail.com
ICAR - ATARI	Dr Rajbir Singh	Director ATARI (Zone-I) Ludhiana	rajbirsingh.zpd@gmail.com
	Dr S.K. Singh	Director ATARI (Zone-II) Jodhpur	sushilsinghiipr@yahoo.co.in
	Dr Atar Singh	Director ATARI (Zone-III) Kanpur	zpdicarkanpur@gmail.com
ICAR - IASRI	Dr Rajender Parsad	Principal Scientist	rajender.parsad@icar.gov.in

Softcopy of this report and latest statistics can be seen on <http://creams.iari.res.in>

GIS Maps of fire events can be visualized online on ICAR KRISHI Geoportal website: <http://geoportal.icar.gov.in:8080/geoexplorer/composer/>

(Part of KRISHI Portal: <https://krishi.icar.gov.in> initiative)
