

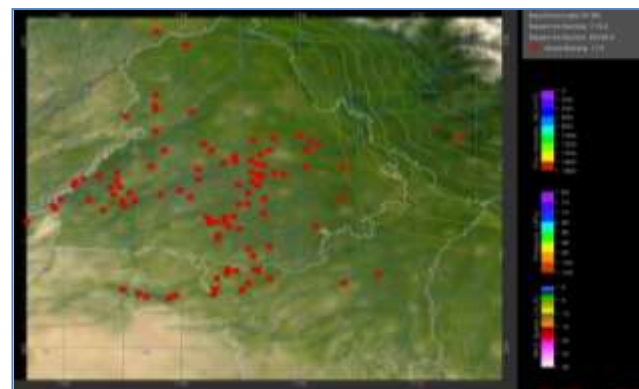
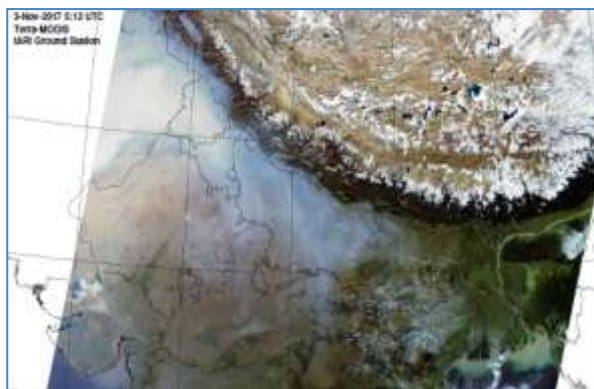


# MONITORING PADDY RESIDUE BURNING IN NORTH INDIA USING SATELLITE REMOTE SENSING DURING 2020

**Bulletin  
No. 11**

**Events Date:  
11-Oct-2020**

**Issued on:  
12-Oct-2020**



**Prepared by:**

**Consortium for Research on Agroecosystem Monitoring and Modeling from Space (CREAMS) Laboratory,  
Division of Agricultural Physics, ICAR – Indian Agricultural Research Institute, New Delhi – 110012**

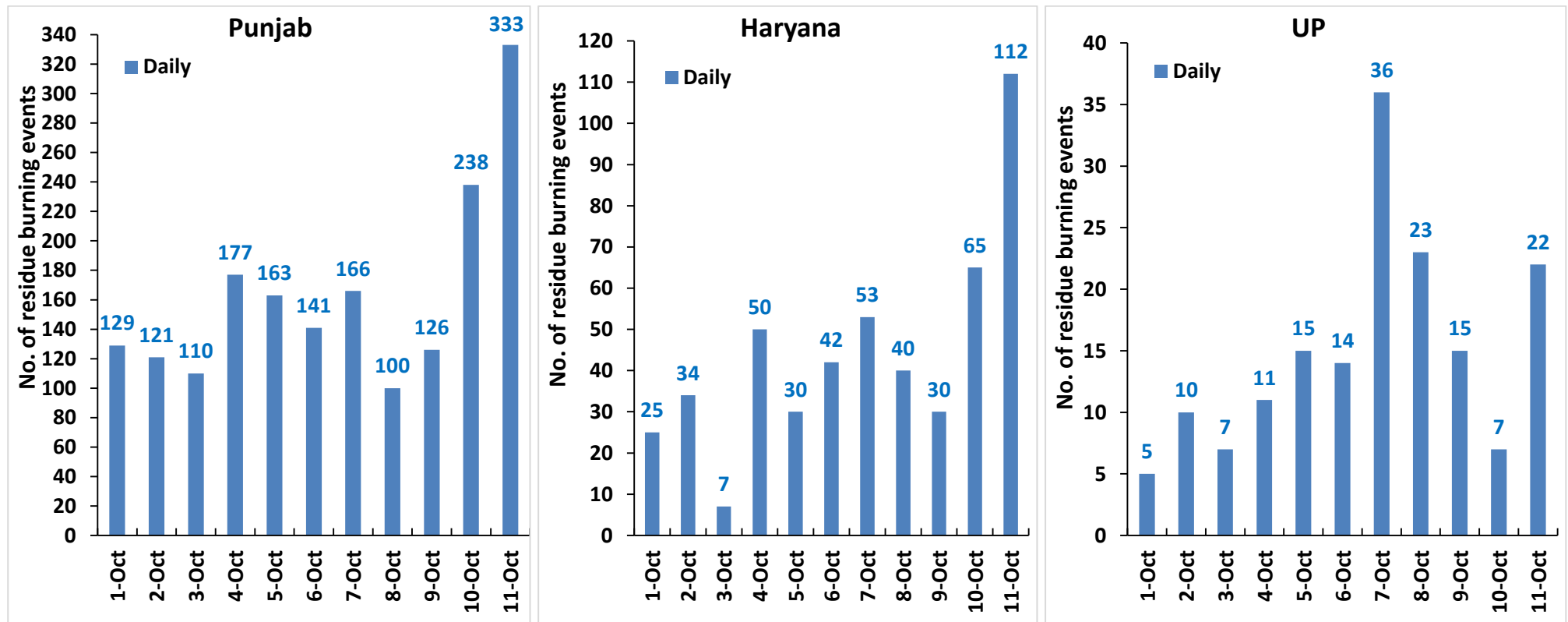
<http://creams.iari.res.in>



## Highlights for 11-October-2020

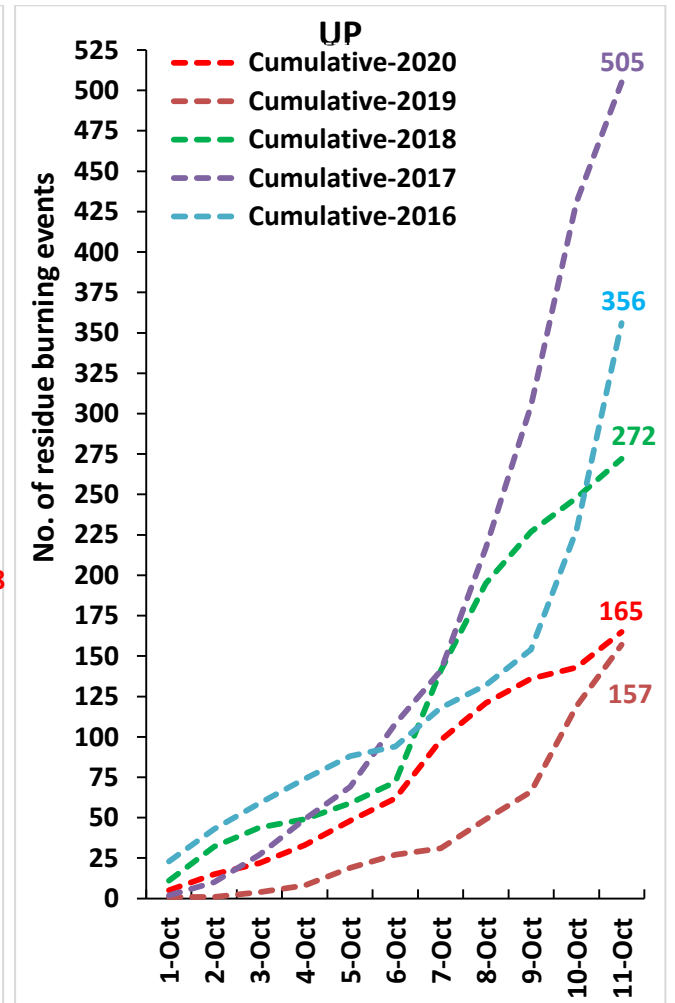
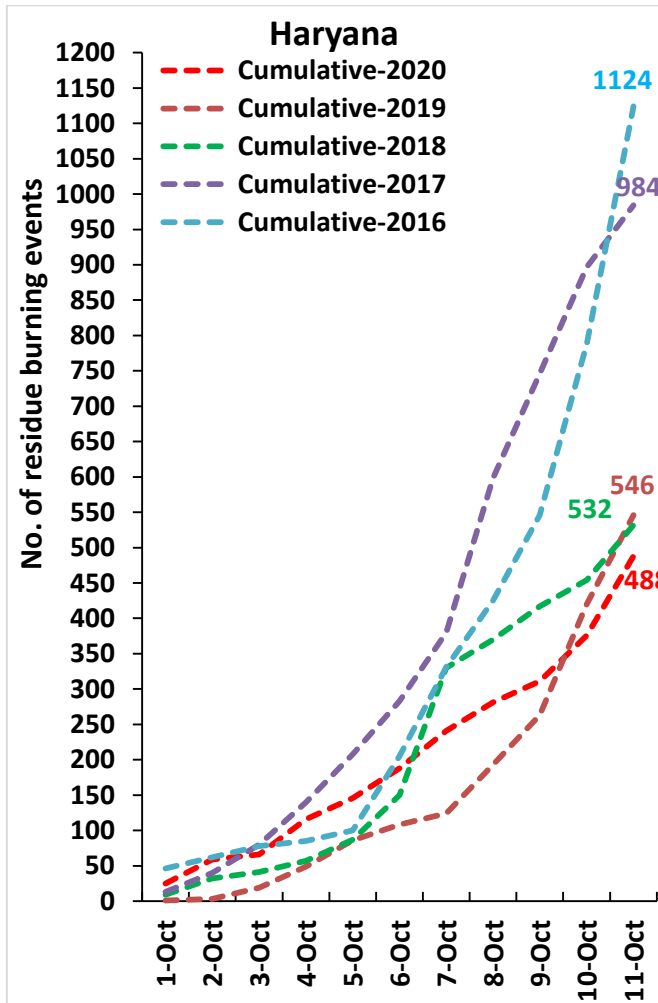
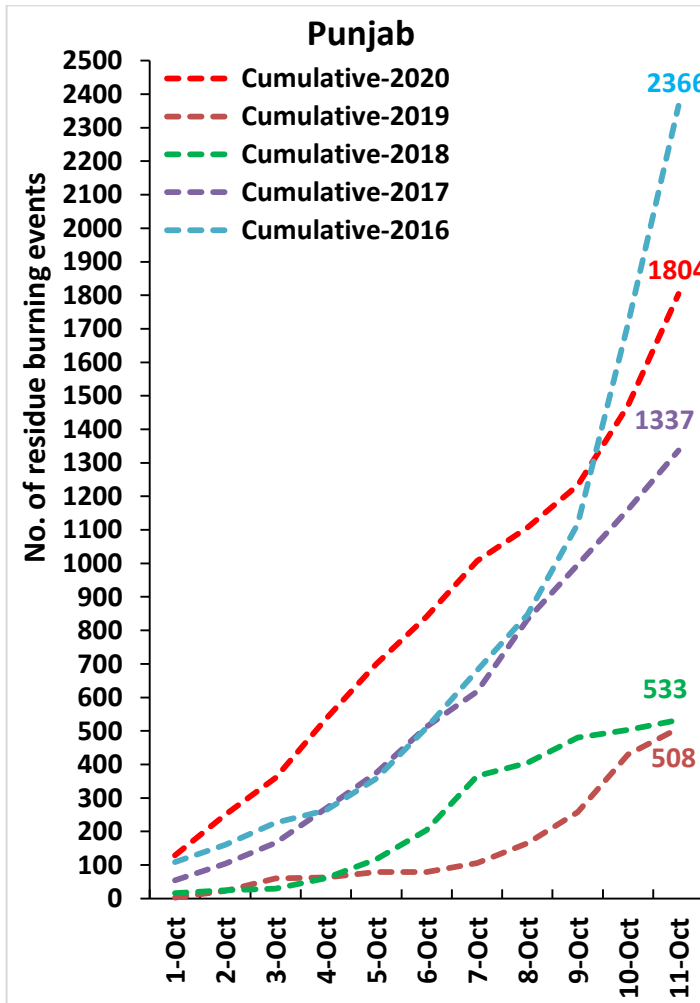
- Satellites detected **467** residue burning events in the three study States on 11-Oct-2020.
- The state wise events detected on **11-Oct-2020** were **333** in Punjab, **112** in Haryana and **22** in UP.
- In Punjab, the burning events were concentrated in Amritsar, Tarn Taran and Patiala districts.
- In Haryana, the burning events were concentrated in Karnal, kaithal and Ambala.
- Total **2457** burning events were detected in the three States between **01-Oct-2020** and **11-Oct-2020**, which are distributed as **1804**, **488** and **165** in Punjab, Haryana and UP, respectively.
- Amritsar, Tarn Taran and Patiala in Punjab; Kurukshetra, Karnal and Ambala in Haryana; and Aligarh, Kheri and Saharanpur in UP were the top three districts with burning events during **1-Oct to 11-Oct 2020**
- In Punjab and UP, the cumulative number of burning events between **1-Oct** and **11-Oct 2020** were higher than in **2019**.

### Temporal distribution of residue burning events for the three study States in 2020

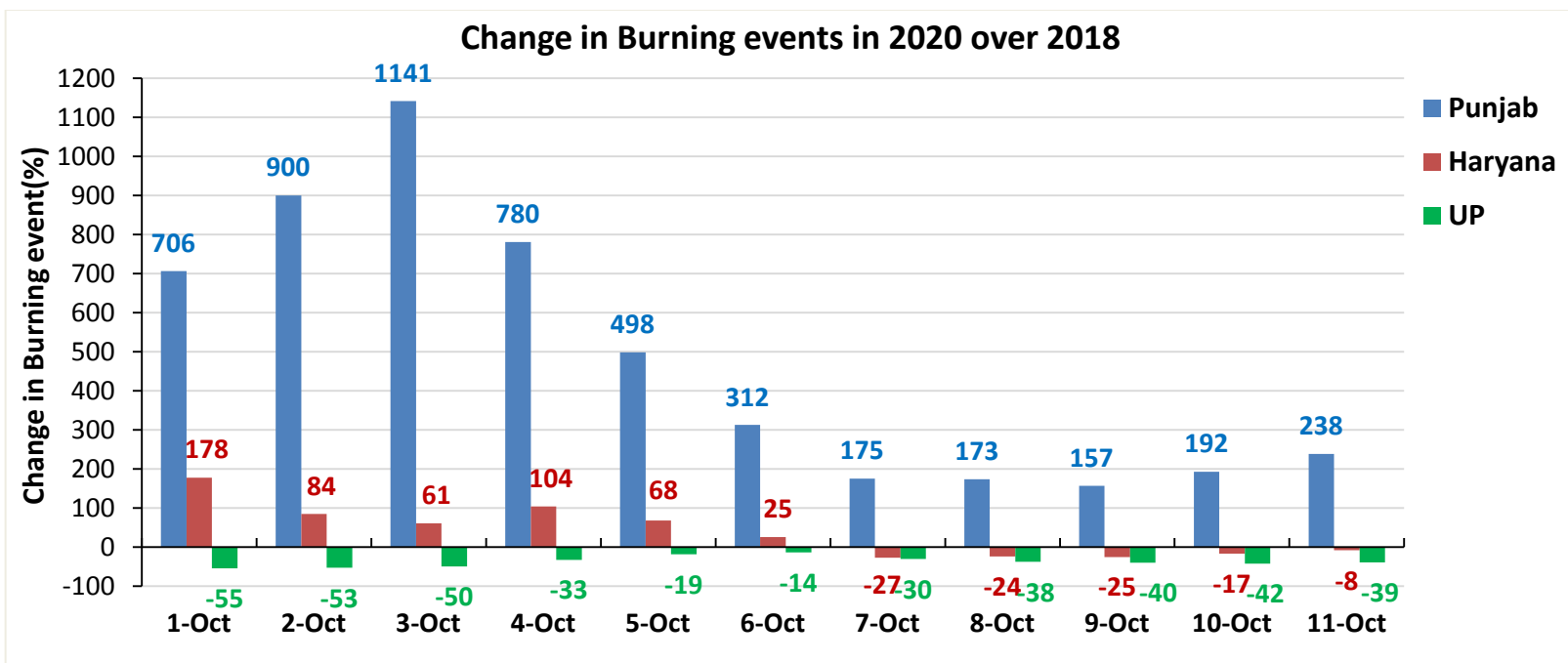
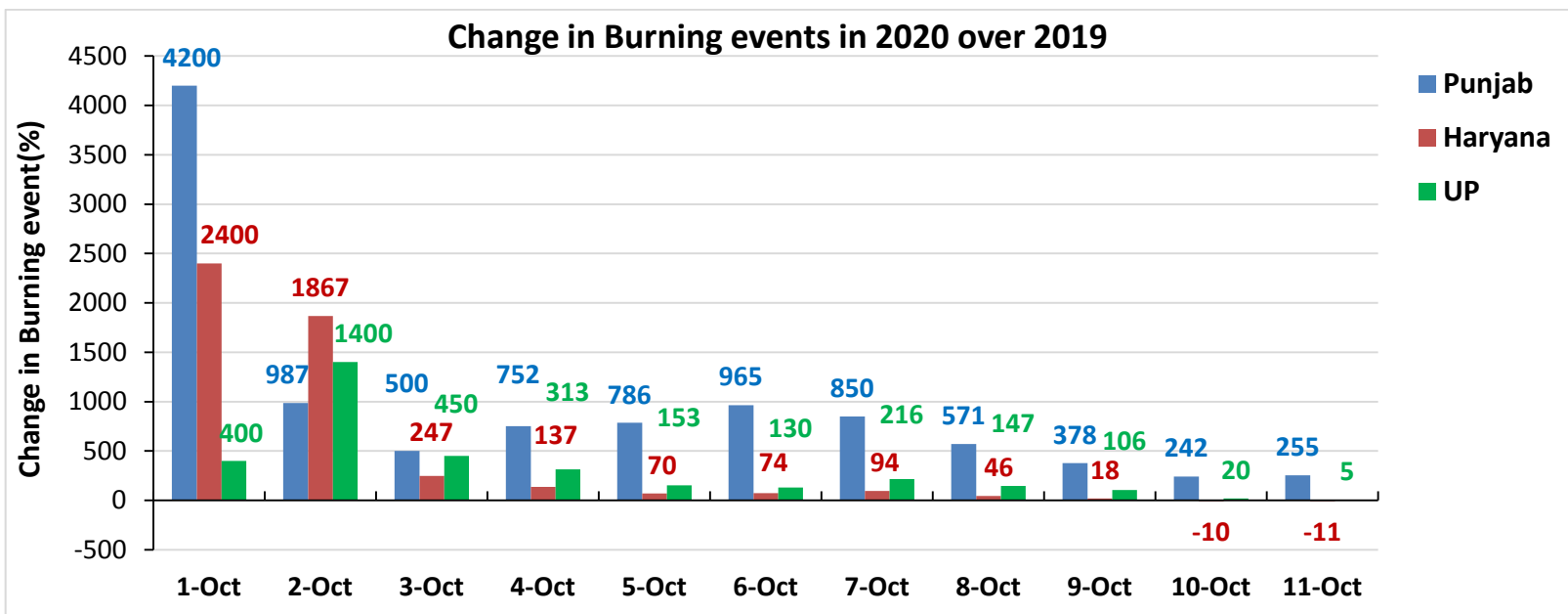


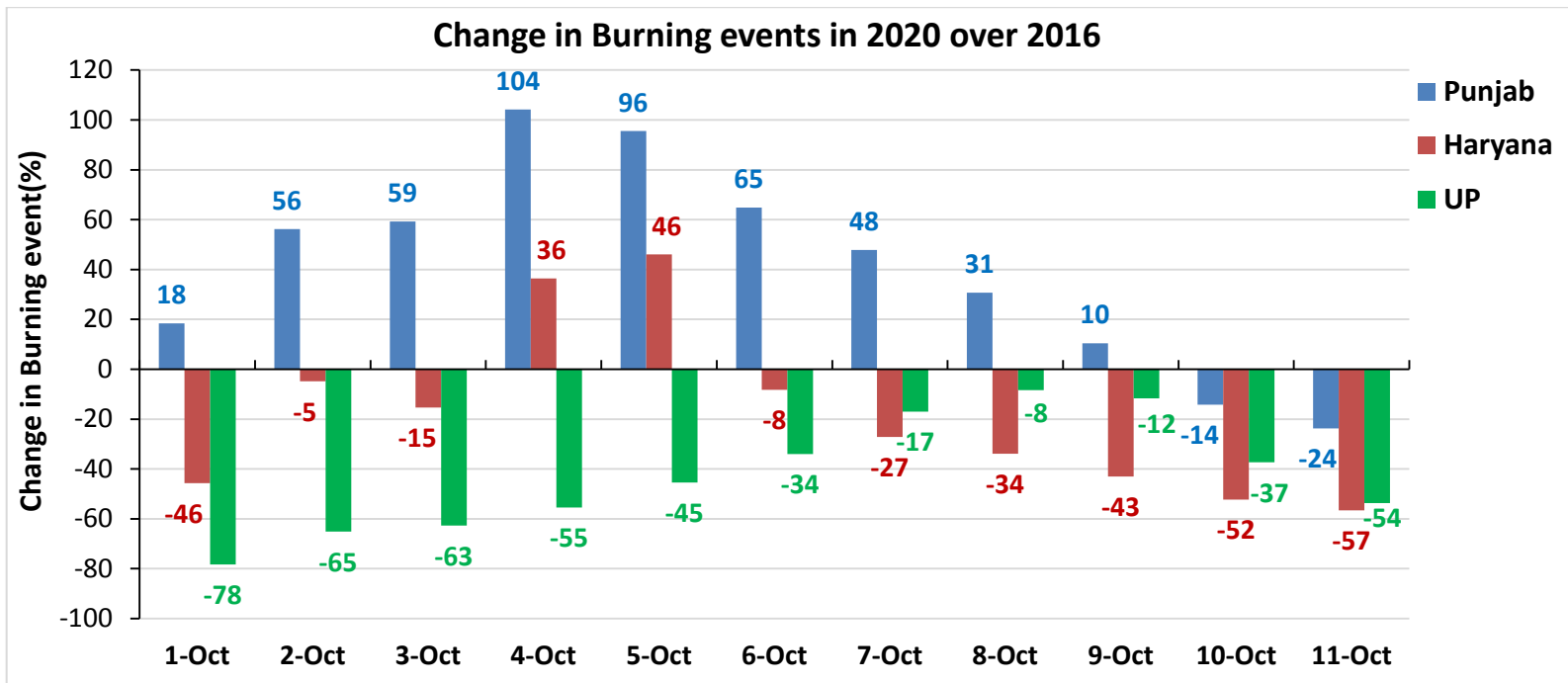
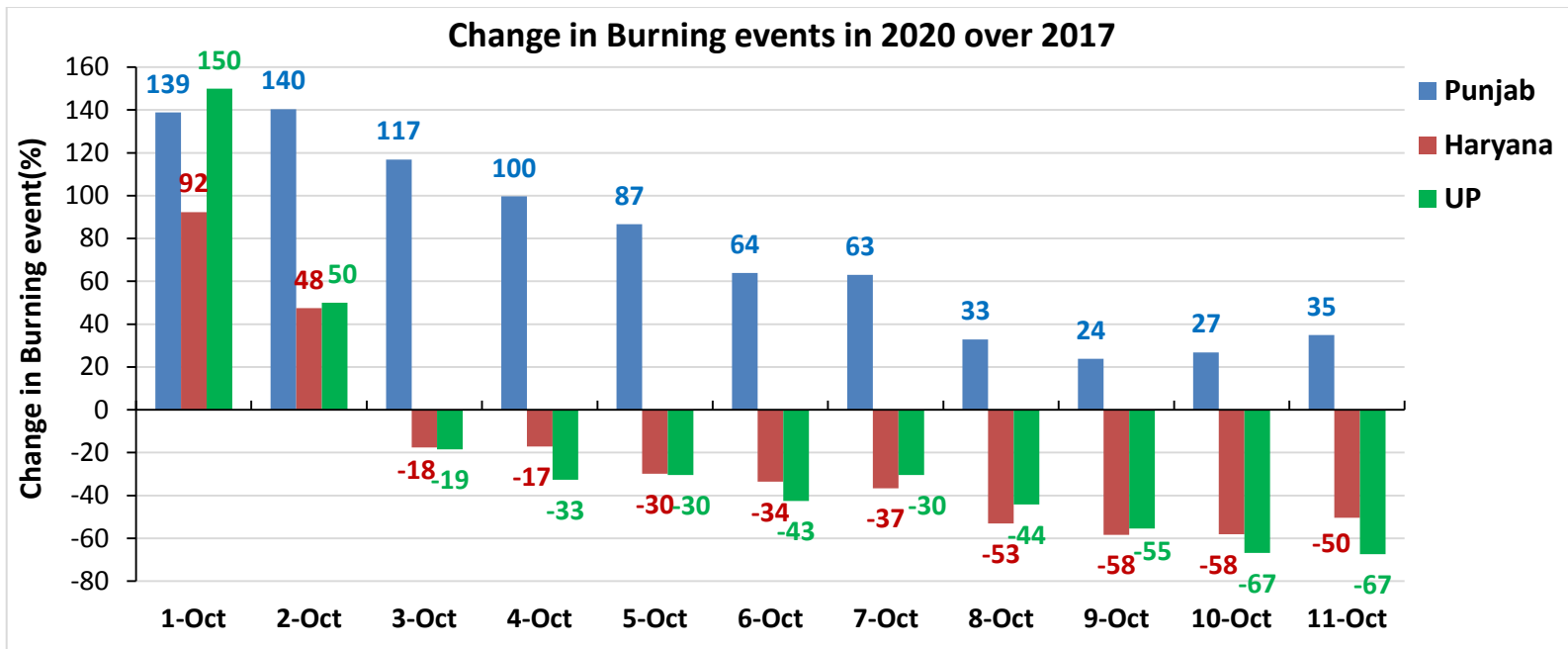
**Comparison of residue burning events in current year (2020) with previous years (2019, 2018, 2017 & 2016) for the three study States**

**(01-Oct to 11-Oct)**

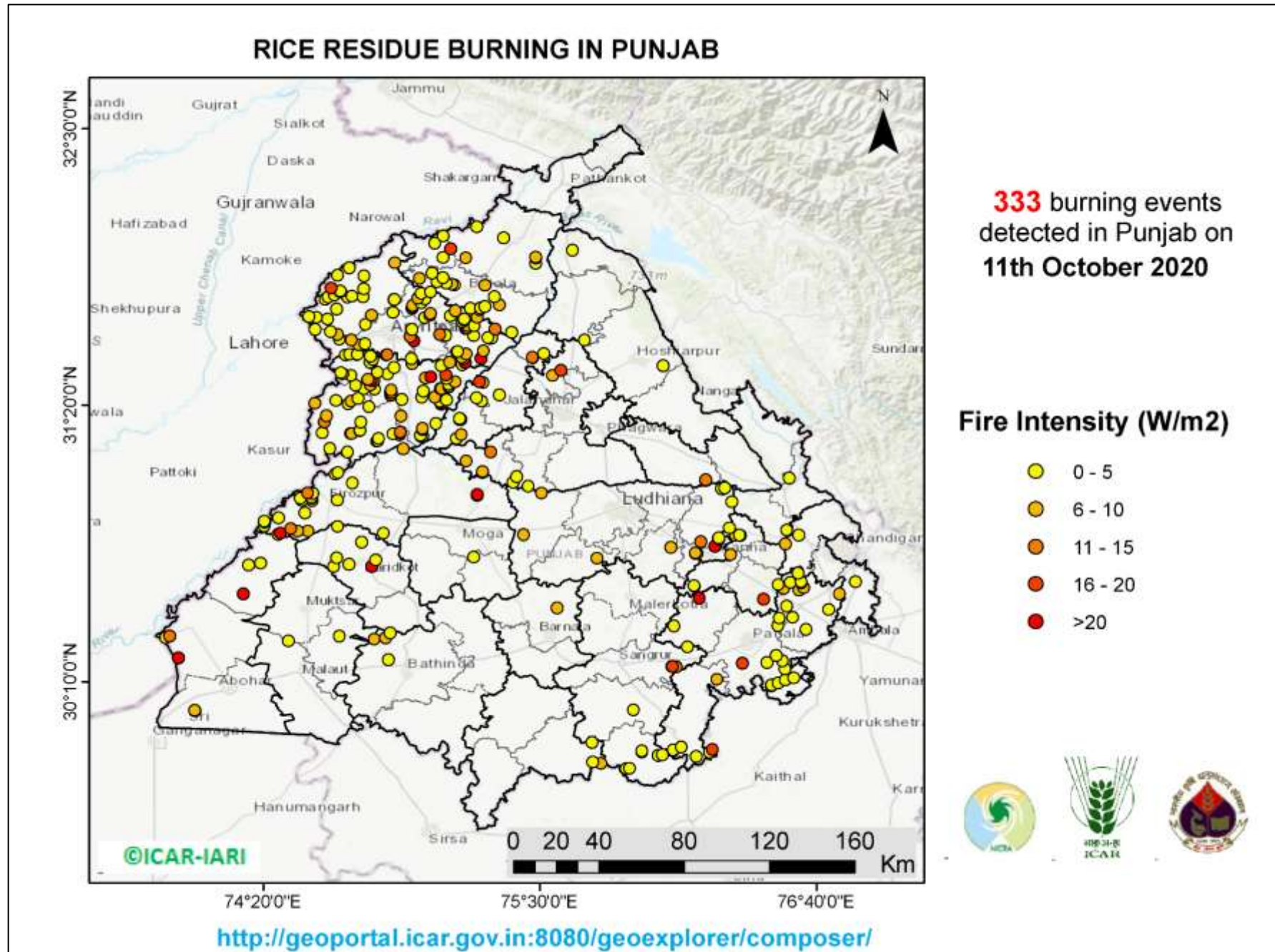


**Percent Change in Burning events in 2020 over 2019, 2018, 2017 and 2016 (Daily Cumulative)**

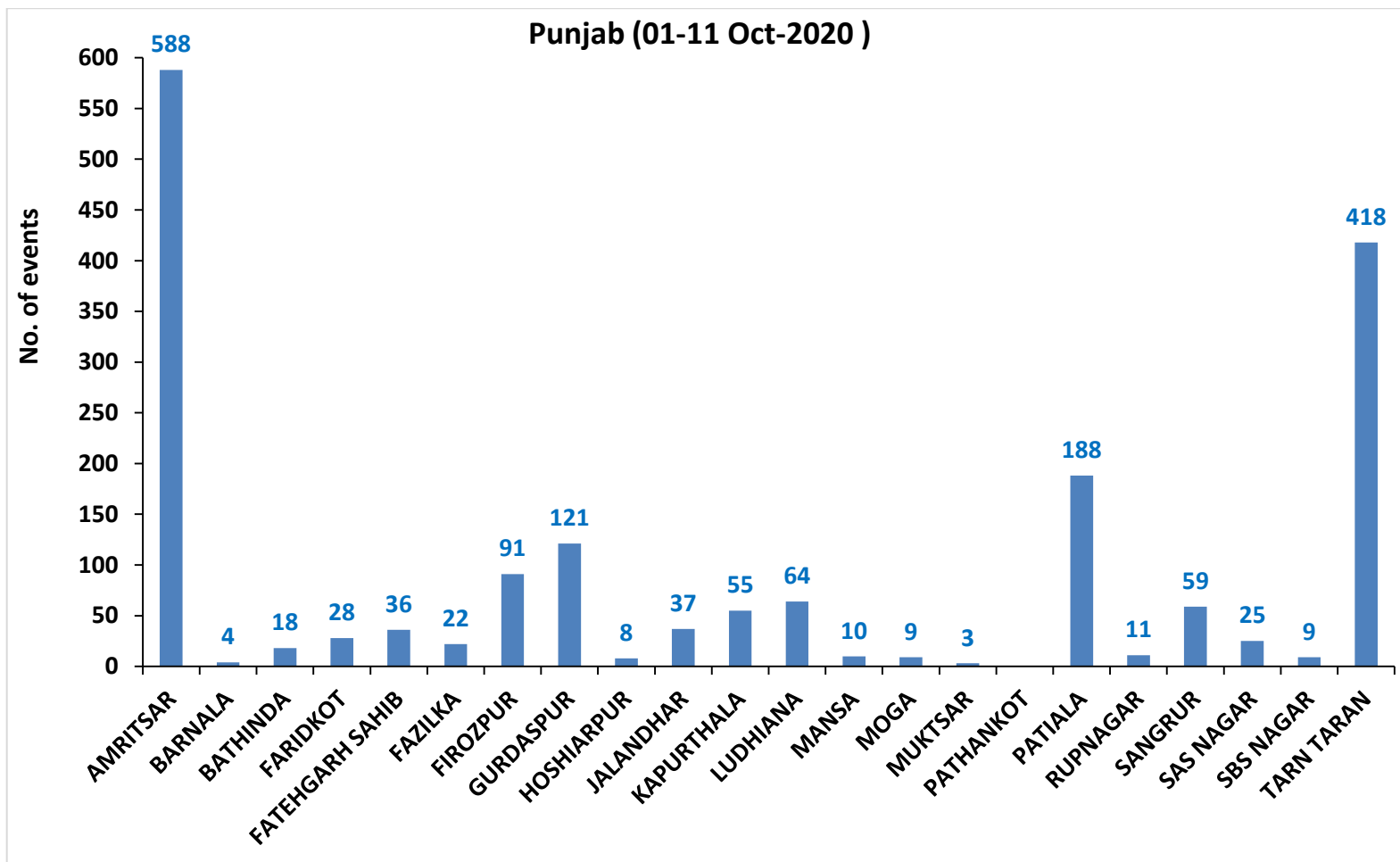




(a) Punjab

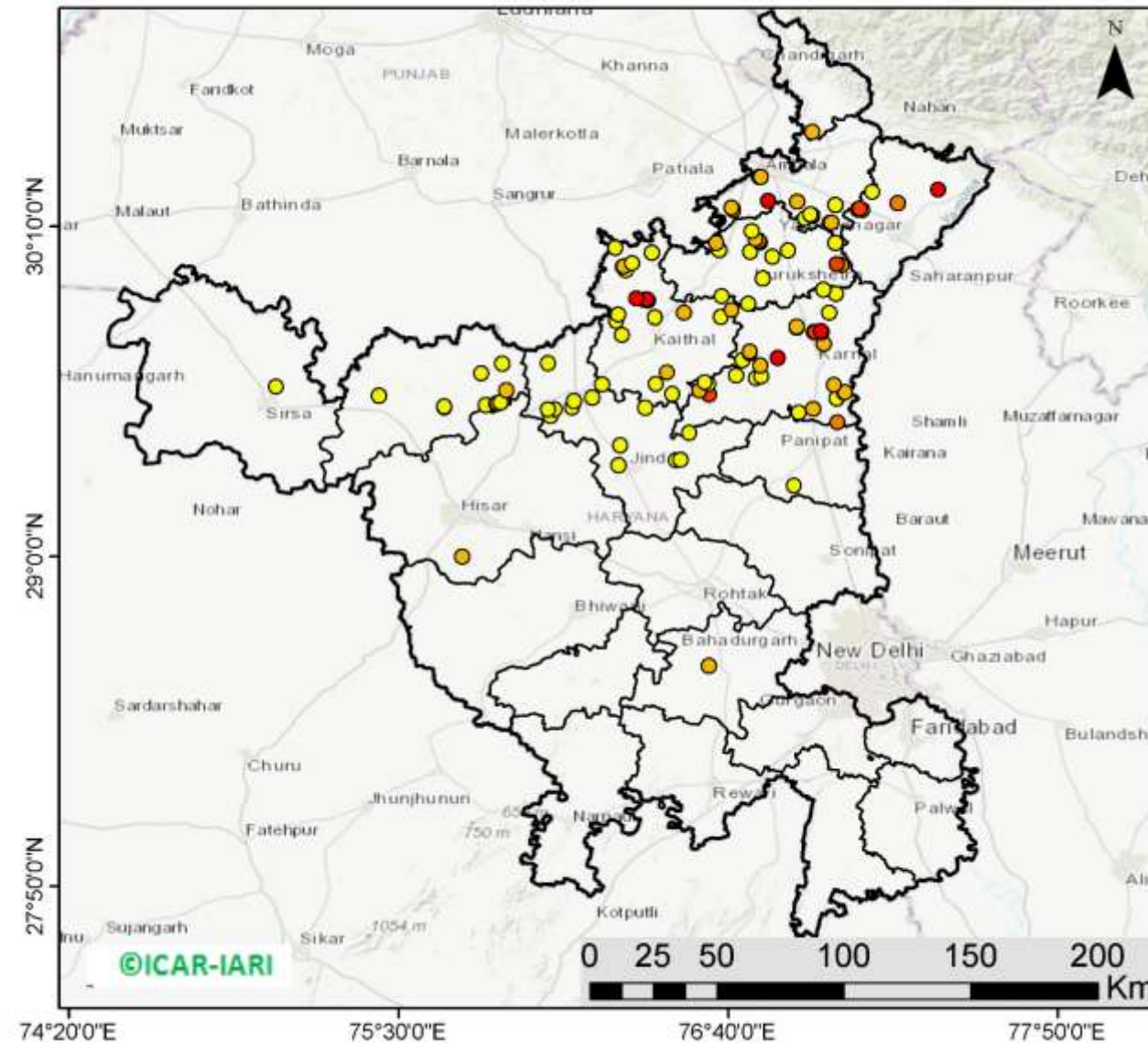


**District-wise cumulative number of residue burning events in Punjab (01-11 Oct-2020)**



(b) Haryana

RICE RESIDUE BURNING IN HARYANA



**112** burning events detected in Haryana on 11th October 2020

Fire Intensity (W/m<sup>2</sup>)

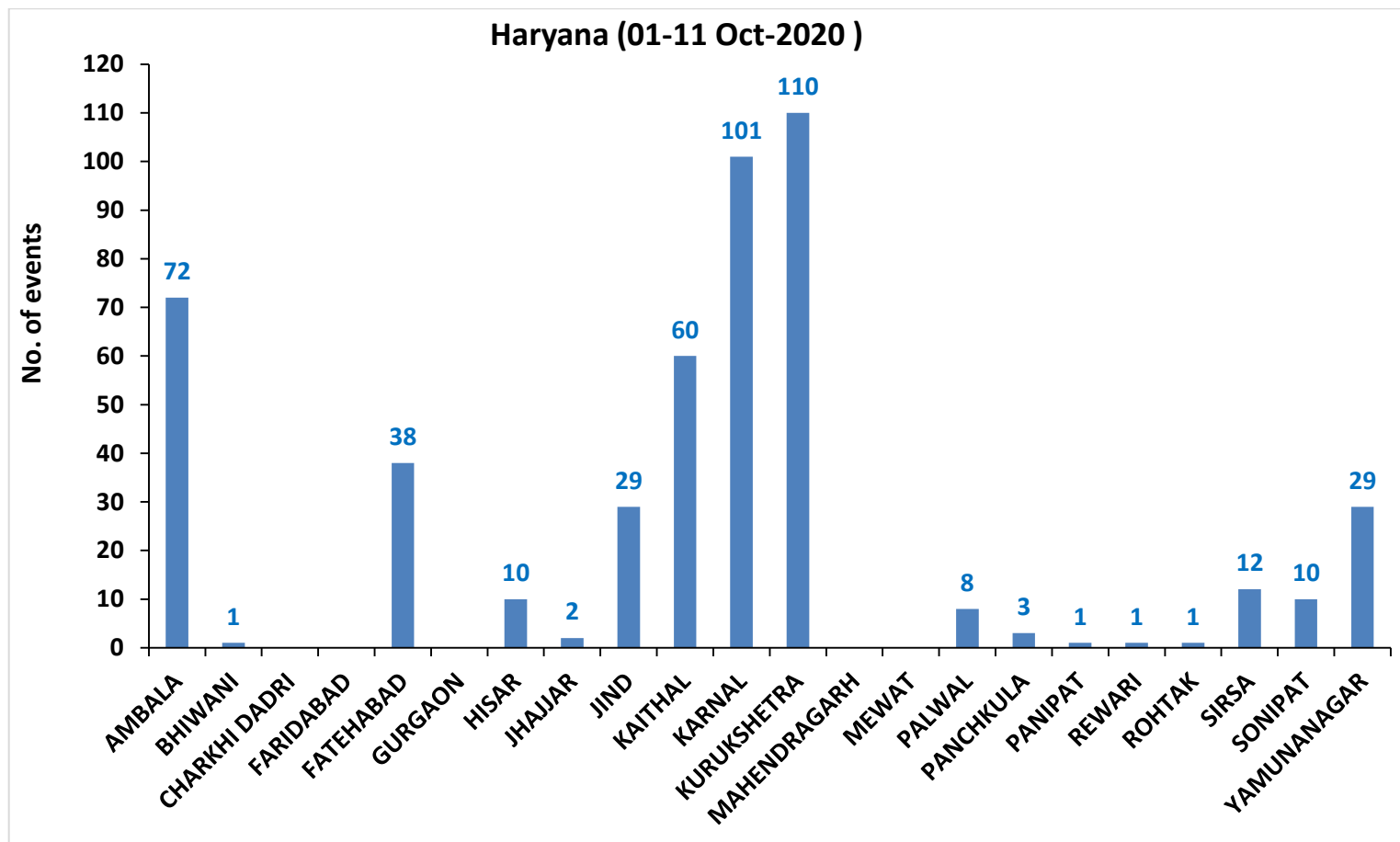
- 0 - 5
- 6 - 10
- 11 - 15
- 16 - 20
- >20



<http://geoportal.icar.gov.in:8080/geoexplorer/composer/>

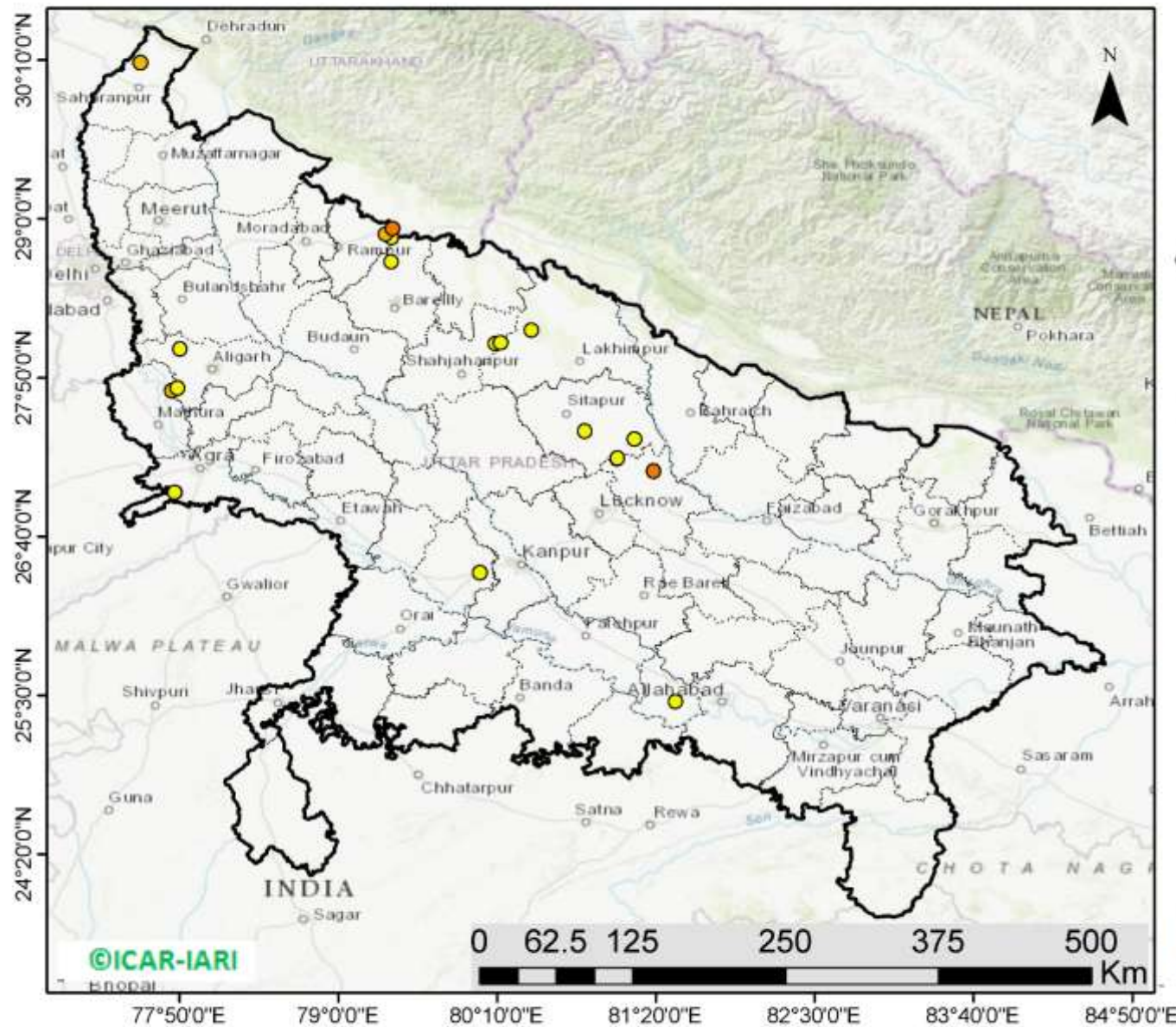


**District-wise cumulative number of residue burning events in Haryana (01-11 Oct-2020)**



(c) Uttar Pradesh

RICE RESIDUE BURNING IN UTTAR PRADESH



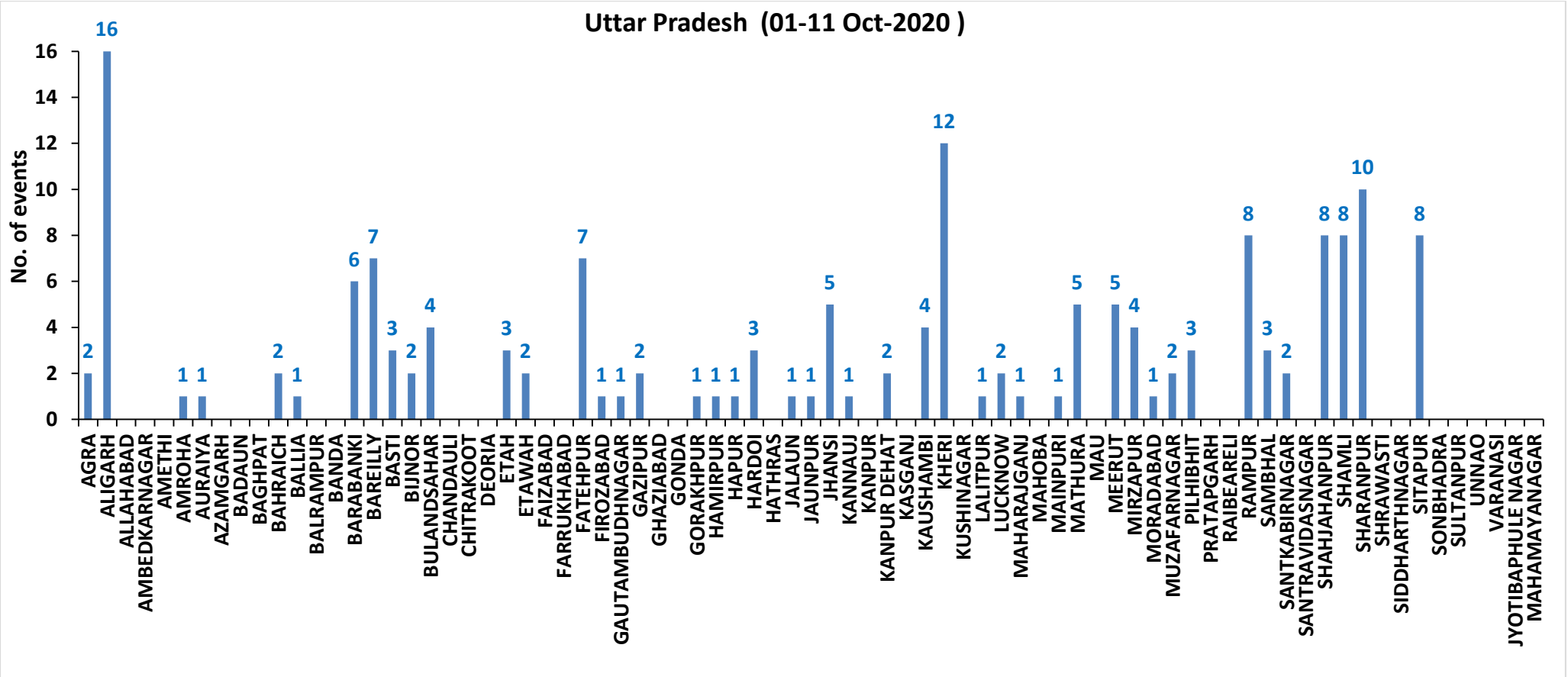
**22** burning events detected in Uttar Pradesh on 11th October 2020

Fire Intensity (W/m<sup>2</sup>)

- 0 - 5
- 6 - 10
- 11 - 15
- 16 - 20
- >20

<http://geoportal.icar.gov.in:8080/geoexplorer/composer/>

**District-wise cumulative number of residue burning events in Uttar Pradesh (01-11 Oct-2020)**



**State-wise and date-wise number of residue burning events detected in 2016, 2017, 2018, 2019 and 2020**  
**(Period: 01-11 October)**

Date	Punjab					Haryana					UP					Total				
	2020	2019	2018	2017	2016	2020	2019	2018	2017	2016	2020	2019	2018	2017	2016	2020	2019	2018	2017	2016
01-Oct	129	3	16	54	109	25	1	9	13	46	5	1	11	2	23	159	5	36	69	178
02-Oct	121	20	9	50	51	34	2	23	27	16	10	0	21	8	20	165	22	53	85	87
03-Oct	110	37	4	62	66	07	16	9	40	16	07	3	12	17	16	124	56	25	119	98
04-Oct	177	3	32	103	37	50	30	16	60	7	11	4	5	22	15	238	37	53	185	59
05-Oct	163	16	56	106	95	30	37	30	68	15	15	11	10	20	14	208	64	96	194	124
06-Oct	141	0	87	138	152	42	22	63	75	105	14	8	13	39	6	197	30	163	252	263
07-Oct	166	27	162	105	171	53	16	180	97	126	36	4	69	33	24	255	47	411	235	321
08-Oct	100	59	39	215	166	40	69	40	218	94	23	18	54	76	14	163	146	133	509	274
09-Oct	126	93	75	163	270	30	70	47	148	121	15	17	32	88	22	171	180	154	399	413
10-Oct	238	172	23	164	597	65	157	37	151	242	07	53	21	126	74	310	382	81	441	913
11-Oct	333	78	30	177	652	112	126	78	87	336	22	38	24	74	128	467	242	132	338	1116
<b>Total</b>	<b>1804</b>	<b>508</b>	<b>533</b>	<b>1337</b>	<b>2366</b>	<b>488</b>	<b>546</b>	<b>532</b>	<b>984</b>	<b>1124</b>	<b>165</b>	<b>157</b>	<b>272</b>	<b>505</b>	<b>356</b>	<b>2457</b>	<b>1211</b>	<b>1337</b>	<b>2826</b>	<b>3846</b>

**District-wise and date wise cumulative number of residue burning events detected in 2016, 2017, 2018, 2019 and 2020**  
**(Period: 01-11 October)**

**(a) Punjab**

Districts	01-11 Oct				
	2016	2017	2018	2019	2020
AMRITSAR	503	324	288	205	588
BARNALA	8	4	1	0	4
BATHINDA	89	44	12	2	18
FARIDKOT	130	151	1	4	28
FATEHGARH					
SAHIB	130	38	9	4	36
FAZILKA	0	0	0	6	22
FIROZPUR	172	131	22	16	91
GURDASPUR	107	31	26	17	121
HOSHIARPUR	16	4	3	5	8
JALANDHAR	153	49	0	19	37
KAPURTHALA	127	15	2	11	55
LUDHIANA	95	85	17	6	64
MANSA	10	17	1	12	10
MOGA	27	8	0	7	9
MUKTSAR	136	17	3	2	3
PATHANKOT	0	0	0	0	0
PATIALA	196	149	35	59	188
RUPNAGAR	15	2	0	0	11
SANGRUR	40	64	23	20	59
SAS NAGAR	20	22	16	4	25
SBS NAGAR	28	15	6	6	9
TARN TARAN	364	167	68	103	418
<b>Total</b>	<b>2366</b>	<b>1337</b>	<b>533</b>	<b>508</b>	<b>1804</b>

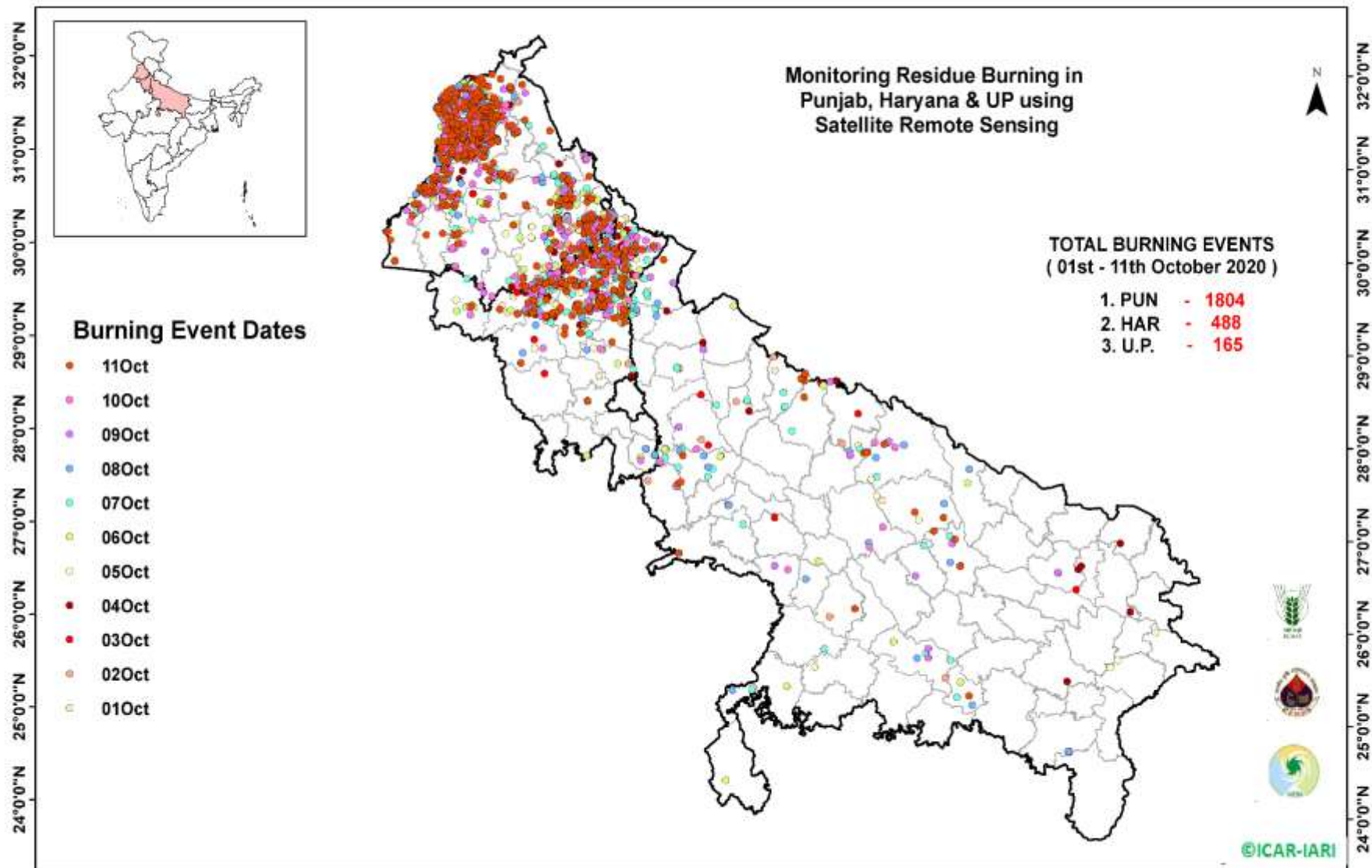
**(b) Haryana**

Districts	01-11 Oct				
	2016	2017	2018	2019	2020
AMBALA	70	74	35	20	72
BHIWANI	0	2	0	0	1
CHARKHI DADRI	0	0	0	0	0
FARIDABAD	3	8	19	1	0
FATEHABAD	19	41	10	28	38
GURGAON	0	0	0	0	0
HISAR	7	6	6	8	10
JHAJJAR	1	0	3	1	2
JIND	22	43	24	24	29
KAITHAL	315	185	84	125	60
KARNAL	416	341	157	189	101
KURUKSHETRA	220	221	136	117	110
MAHENDRAGARH	0	0	0	1	0
MEWAT	0	0	0	0	0
PALWAL	0	0	0	3	8
PANCHKULA	0	0	3	5	3
PANIPAT	11	18	25	3	1
REWARI	0	0	0	0	1
ROHTAK	0	1	0	0	1
SIRSA	21	9	7	5	12
SONIPAT	0	7	4	0	10
YAMUNANAGAR	19	28	19	16	29
<b>Total</b>	<b>1124</b>	<b>984</b>	<b>532</b>	<b>546</b>	<b>488</b>

**(C)**  
**Uttar Pradesh**

Districts	01-11 Oct																
	2016	2017	2018	2019	2020	GAUTAMBUDHNAGAR	0	0	0	0	1	MUZAFARNAGAR	1	3	1	1	2
AGRA	0	0	0	0	2	GAZIPUR	1	0	1	0	2	PILHIBHIT	5	27	5	4	3
ALIGARH	0	8	6	7	16	GHAZIABAD	0	0	0	0	0	PRATAPGARH	42	76	28	32	0
ALLAHABAD	0	0	3	0	0	GONDA	1	1	2	1	0	RAIBEARELI	0	0	0	0	0
AMBEDKARNAGAR	0	1	0	0	0	GORAKHPUR	0	0	0	0	1	RAMPUR	0	0	0	0	8
AMETHI	0	0	0	0	0	HAMIRPUR	0	0	3	0	1	SAMBHAL	94	64	31	12	3
AMROHA	0	0	0	0	1	HAPUR	0	0	1	0	1	SANTKABIRNAGAR	6	6	5	4	2
AURAIYA	31	29	14	0	1	HARDOI	0	0	0	2	3	SANTRAVIDASNAGAR	0	0	0	1	0
AZAMGARH	0	0	0	0	0	HATHRAS	0	2	2	0	0	SHAHJAHANPUR	0	0	0	0	8
BADAUN	0	0	0	0	0	JALAUN	0	0	0	0	1	SHAMLI	101	173	67	26	8
BAGHPAT	0	0	0	2	0	JAUNPUR	0	0	0	0	1	SHARANPUR	0	0	0	5	10
BAHRAICH	0	0	2	0	2	JHANSI	0	0	2	0	5	SHRAWASTI	0	0	0	0	0
BALLIA	0	0	0	1	1	KANNAUJ	0	0	0	2	1	SIDDHARTHANAGAR	0	0	0	0	0
BALRAMPUR	0	0	0	0	0	KANPUR	0	0	1	0	0	SITAPUR	3	4	1	0	8
BANDA	0	0	1	0	0	KANPUR DEHAT	0	0	0	0	2	SONBHADRA	3	1	3	0	0
BARABANKI	7	13	24	1	6	KASGANJ	0	1	0	0	0	SULTANPUR	0	0	0	0	0
BAREILLY	20	11	4	6	7	KAUSHAMBI	0	0	0	0	4	UNNAO	0	0	0	0	0
BASTI	0	0	0	0	3	KHERI	0	2	6	0	12	VARANASI	0	0	0	0	0
BIJNOR	0	0	0	0	2	KUSHINAGAR	30	55	21	25	0	JYOTIBAPHULE NAGAR	0	0	0	0	0
BULANDSAHAR	0	0	1	0	4	LALITPUR	0	1	0	0	1	MAHAMAYANAGAR	0	0	0	0	0
CHANDAULI	0	2	2	2	0	LUCKNOW	0	0	0	0	2	<b>Total</b>	<b>356</b>	<b>505</b>	<b>272</b>	<b>157</b>	<b>165</b>
CHITRAKOOT	0	0	0	0	0	MAHARAJGANJ	2	4	0	1	1						
DEORIA	0	0	0	0	0	MAHOBA	0	1	1	0	0						
ETAH	0	0	0	0	3	MAINPURI	0	0	0	0	1						
ETAWAH	0	1	2	0	2	MATHURA	0	2	2	1	5						
FAIZABAD	0	2	0	0	0	MAU	7	9	27	14	0						
FARRUKHABAD	0	1	0	0	0	MEERUT	0	0	0	0	5						
FATEHPUR	0	0	0	0	7	MIRZAPUR	2	2	0	4	4						
FIROZABAD	0	2	2	0	1	MORADABAD	0	1	1	3	1						

### Map of Cumulative Burning Events (01-11 Oct 2020)



(<http://geoportal.icar.gov.in:8080/geoexplorer/composer/>)

**Details of residue burning events in Punjab on 11-Oct-2020**

S. No.	District	Tehsil / Block	Satellite	Longitude	Latitude	Time (IST)	Day / Night	Fire Power (W/m2)
1	AMRITSAR	AJNALA	S-NPP	74.64684	31.63280	13:42:00	D	7.00
2	AMRITSAR	AJNALA	S-NPP	74.61833	31.64449	13:42:00	D	2.50
3	AMRITSAR	AJNALA	S-NPP	74.55309	31.65365	13:42:00	D	2.10
4	AMRITSAR	AJNALA	S-NPP	74.60461	31.69580	13:42:00	D	2.30
5	AMRITSAR	AJNALA	S-NPP	74.53557	31.70080	13:42:00	D	1.60
6	AMRITSAR	AJNALA	S-NPP	74.55772	31.70375	13:42:00	D	3.00
7	AMRITSAR	AJNALA	S-NPP	74.52547	31.70653	13:42:00	D	5.00
8	AMRITSAR	AJNALA	S-NPP	74.78958	31.71294	13:42:00	D	5.10
9	AMRITSAR	AJNALA	S-NPP	74.64239	31.73979	13:42:00	D	2.90
10	AMRITSAR	AJNALA	S-NPP	74.88461	31.77892	13:42:00	D	1.70
11	AMRITSAR	AJNALA	S-NPP	74.88604	31.77971	13:42:00	D	2.90
12	AMRITSAR	AJNALA	S-NPP	74.59525	31.78129	13:42:00	D	2.30
13	AMRITSAR	AJNALA	S-NPP	74.60739	31.78997	13:42:00	D	2.50
14	AMRITSAR	AJNALA	S-NPP	74.68982	31.79009	13:42:00	D	4.20
15	AMRITSAR	AJNALA	S-NPP	74.75407	31.79132	13:42:00	D	4.70
16	AMRITSAR	AJNALA	S-NPP	74.70780	31.79243	13:42:00	D	2.90
17	AMRITSAR	AJNALA	S-NPP	74.63358	31.79695	13:42:00	D	4.40
18	AMRITSAR	AJNALA	S-NPP	74.65858	31.81088	13:42:00	D	3.50
19	AMRITSAR	AJNALA	S-NPP	74.65797	31.81434	13:42:00	D	2.20
20	AMRITSAR	AJNALA	S-NPP	74.75756	31.82383	13:42:00	D	4.10
21	AMRITSAR	AJNALA	TERRA	74.61900	31.82700	11:30:00	D	18.00
22	AMRITSAR	AJNALA	S-NPP	74.75839	31.87802	13:42:00	D	3.40
23	AMRITSAR	AJNALA	S-NPP	74.64710	31.88144	13:42:00	D	2.70
24	AMRITSAR	AJNALA	S-NPP	74.69675	31.91277	13:42:00	D	4.30
25	AMRITSAR	AJNALA	S-NPP	74.88822	31.93399	13:42:00	D	9.60
26	AMRITSAR	AMRITSAR I	S-NPP	74.96118	31.50910	13:42:00	D	6.80
27	AMRITSAR	AMRITSAR I	S-NPP	74.97012	31.60379	13:42:00	D	21.00
28	AMRITSAR	AMRITSAR I	S-NPP	74.95275	31.62304	13:42:00	D	12.60
29	AMRITSAR	AMRITSAR I	S-NPP	75.12234	31.70896	13:42:00	D	2.00
30	AMRITSAR	AMRITSAR I	S-NPP	75.03670	31.71252	13:42:00	D	6.80



31	AMRITSAR	AMRITSAR I	S-NPP	75.04008	31.72014	13:42:00	D	8.10
32	AMRITSAR	AMRITSAR I	S-NPP	74.96109	31.74232	13:42:00	D	2.90
33	AMRITSAR	AMRITSAR I	S-NPP	74.96444	31.74993	13:42:00	D	17.60
34	AMRITSAR	AMRITSAR I	S-NPP	74.96383	31.75343	13:42:00	D	5.40
35	AMRITSAR	AMRITSAR I	S-NPP	74.99930	31.76520	13:42:00	D	3.80
36	AMRITSAR	AMRITSAR I	S-NPP	75.01524	31.78164	13:42:00	D	4.80
37	AMRITSAR	AMRITSAR I	S-NPP	74.98643	31.78508	13:42:00	D	6.30
38	AMRITSAR	AMRITSAR I	S-NPP	74.99874	31.80477	13:42:00	D	3.60
39	AMRITSAR	AMRITSAR II	S-NPP	74.95751	31.53009	13:42:00	D	2.10
40	AMRITSAR	AMRITSAR II	S-NPP	74.85299	31.54500	13:42:00	D	12.50
41	AMRITSAR	AMRITSAR II	S-NPP	74.85749	31.54559	13:42:00	D	12.50
42	AMRITSAR	AMRITSAR II	S-NPP	74.69852	31.54741	13:42:00	D	3.00
43	AMRITSAR	AMRITSAR II	S-NPP	74.73708	31.58792	13:42:00	D	6.50
44	AMRITSAR	AMRITSAR II	S-NPP	74.76399	31.59143	13:42:00	D	4.10
45	AMRITSAR	AMRITSAR II	S-NPP	74.70592	31.60870	13:42:00	D	5.70
46	AMRITSAR	AMRITSAR II	S-NPP	74.65498	31.61262	13:42:00	D	1.60
47	AMRITSAR	AMRITSAR II	S-NPP	74.96155	31.65284	13:42:00	D	2.50
48	AMRITSAR	AMRITSAR II	S-NPP	74.76419	31.67404	13:42:00	D	1.90
49	AMRITSAR	AMRITSAR II	S-NPP	75.01492	31.70258	13:42:00	D	4.80
50	AMRITSAR	AMRITSAR II	S-NPP	74.88018	31.72470	13:42:00	D	2.20
51	AMRITSAR	BABA BAKALA	S-NPP	75.11925	31.51499	13:42:00	D	5.50
52	AMRITSAR	BABA BAKALA	S-NPP	75.17808	31.52966	13:42:00	D	3.80
53	AMRITSAR	BABA BAKALA	AQUA	75.25200	31.53100	13:05:00	D	37.50
54	AMRITSAR	BABA BAKALA	S-NPP	75.17222	31.53613	13:42:00	D	6.00
55	AMRITSAR	BABA BAKALA	S-NPP	75.18894	31.54908	13:42:00	D	5.70
56	AMRITSAR	BABA BAKALA	S-NPP	75.14946	31.55845	13:42:00	D	4.70
57	AMRITSAR	BABA BAKALA	S-NPP	75.15408	31.55905	13:42:00	D	4.70
58	AMRITSAR	BABA BAKALA	S-NPP	75.26279	31.56209	13:42:00	D	5.70
59	AMRITSAR	BABA BAKALA	S-NPP	75.28960	31.61530	13:42:00	D	4.60
60	AMRITSAR	BABA BAKALA	S-NPP	75.29170	31.61650	13:42:00	D	3.30
61	AMRITSAR	BABA BAKALA	S-NPP	75.29639	31.61711	13:42:00	D	3.30
62	AMRITSAR	BABA BAKALA	S-NPP	75.28173	31.61884	13:42:00	D	3.60
63	AMRITSAR	BABA BAKALA	S-NPP	75.10201	31.62781	13:42:00	D	3.10

64	AMRITSAR	BABA BAKALA	S-NPP	75.22046	31.62837	13:42:00	D	3.30
65	AMRITSAR	BABA BAKALA	S-NPP	75.07774	31.63191	13:42:00	D	13.90
66	AMRITSAR	BABA BAKALA	S-NPP	75.18702	31.65666	13:42:00	D	6.10
67	AMRITSAR	BABA BAKALA	TERRA	75.19300	31.65900	11:30:00	D	11.20
68	AMRITSAR	BABA BAKALA	TERRA	75.19500	31.66800	11:30:00	D	9.90
69	AMRITSAR	BABA BAKALA	S-NPP	75.22309	31.66848	13:42:00	D	4.70
70	AMRITSAR	BABA BAKALA	S-NPP	75.17285	31.68374	13:42:00	D	4.90
71	AMRITSAR	BABA BAKALA	S-NPP	75.18093	31.69200	13:42:00	D	3.60
72	AMRITSAR	BABA BAKALA	S-NPP	75.18032	31.69554	13:42:00	D	3.80
73	AMRITSAR	BABA BAKALA	TERRA	75.14300	31.73100	11:30:00	D	7.80
74	BARNALA	BARNALA	S-NPP	75.57297	30.47873	13:42:00	D	5.50
75	BATHINDA	BATHINDA	S-NPP	74.86095	30.25998	13:42:00	D	2.20
76	BATHINDA	BATHINDA	S-NPP	74.80236	30.34595	13:42:00	D	6.50
77	BATHINDA	BATHINDA	S-NPP	74.85021	30.35239	13:42:00	D	6.00
78	BATHINDA	BATHINDA	S-NPP	74.86899	30.37257	13:42:00	D	1.40
79	FARIDKOT	FARIDKOT	S-NPP	74.63064	30.65307	13:42:00	D	1.20
80	FARIDKOT	FARIDKOT	S-NPP	74.79093	30.65348	13:42:00	D	30.70
81	FARIDKOT	FARIDKOT	S-NPP	74.69569	30.66186	13:42:00	D	2.00
82	FARIDKOT	FARIDKOT	S-NPP	74.80856	30.68057	13:42:00	D	1.80
83	FARIDKOT	FARIDKOT	S-NPP	74.64374	30.68903	13:42:00	D	2.80
84	FARIDKOT	FARIDKOT	S-NPP	74.74786	30.75574	13:42:00	D	4.20
85	FATEHGARH SAHIB	ALMOH	S-NPP	76.15167	30.56857	13:42:00	D	2.50
86	FATEHGARH SAHIB	ALMOH	S-NPP	76.15108	30.57222	13:42:00	D	2.50
87	FATEHGARH SAHIB	FATEHGARH SAHIB	S-NPP	76.44249	30.51535	13:42:00	D	15.60
88	FATEHGARH SAHIB	FATEHGARH SAHIB	S-NPP	76.52850	30.55970	13:42:00	D	10.00
89	FATEHGARH SAHIB	FATEHGARH SAHIB	S-NPP	76.50520	30.57576	13:42:00	D	3.80
90	FATEHGARH SAHIB	KHAMANOH	S-NPP	76.34444	30.78395	13:42:00	D	3.30
91	FATEHGARH SAHIB	KHAMANOH	S-NPP	76.32369	30.78524	13:42:00	D	9.90
92	FATEHGARH SAHIB	KHAMANOH	S-NPP	76.34216	30.78547	13:42:00	D	3.00
93	FATEHGARH SAHIB	KHAMANOH	S-NPP	76.29825	30.81597	13:42:00	D	4.20
94	FAZILKA	ABOHAR	S-NPP	74.04578	30.04325	13:42:00	D	9.20
95	FAZILKA	ABOHAR	S-NPP	74.04515	30.04661	13:42:00	D	8.60
96	FAZILKA	FAZILKA	S-NPP	73.97665	30.26758	13:42:00	D	26.00

97	FAZILKA	FAZILKA	S-NPP	73.92271	30.35310	13:42:00	D	2.30
98	FAZILKA	FAZILKA	S-NPP	73.93859	30.35880	13:42:00	D	12.00
99	FAZILKA	JALALABAD	S-NPP	74.24891	30.53827	13:42:00	D	34.70
100	FAZILKA	JALALABAD	S-NPP	74.27160	30.65992	13:42:00	D	5.00
101	FAZILKA	JALALABAD	S-NPP	74.32248	30.66685	13:42:00	D	1.70
102	FAZILKA	JALALABAD	S-NPP	74.39722	30.78816	13:42:00	D	4.20
103	FAZILKA	JALALABAD	S-NPP	74.40517	30.79273	13:42:00	D	20.90
104	FIROZPUR	FIROZPUR	S-NPP	74.84022	30.79284	13:42:00	D	3.00
105	FIROZPUR	FIROZPUR	S-NPP	74.52248	30.80153	13:42:00	D	9.70
106	FIROZPUR	FIROZPUR	S-NPP	74.47815	30.80259	13:42:00	D	6.30
107	FIROZPUR	FIROZPUR	S-NPP	74.44990	30.81278	13:42:00	D	13.50
108	FIROZPUR	FIROZPUR	S-NPP	74.64759	30.82178	13:42:00	D	3.30
109	FIROZPUR	FIROZPUR	S-NPP	74.33854	30.82209	13:42:00	D	2.20
110	FIROZPUR	FIROZPUR	S-NPP	74.33971	30.83970	13:42:00	D	1.70
111	FIROZPUR	FIROZPUR	S-NPP	74.33910	30.84311	13:42:00	D	2.60
112	FIROZPUR	FIROZPUR	S-NPP	74.39872	30.85801	13:42:00	D	2.90
113	FIROZPUR	FIROZPUR	S-NPP	74.50945	30.87980	13:42:00	D	2.90
114	FIROZPUR	FIROZPUR	S-NPP	74.54041	30.92957	13:42:00	D	3.90
115	FIROZPUR	FIROZPUR	S-NPP	74.49590	30.93060	13:42:00	D	3.90
116	FIROZPUR	FIROZPUR	S-NPP	74.64669	30.93322	13:42:00	D	2.70
117	FIROZPUR	FIROZPUR	S-NPP	74.53857	30.93986	13:42:00	D	3.50
118	FIROZPUR	FIROZPUR	S-NPP	74.48972	30.94029	13:42:00	D	2.10
119	FIROZPUR	FIROZPUR	S-NPP	74.53795	30.94329	13:42:00	D	5.10
120	FIROZPUR	FIROZPUR	S-NPP	74.54356	30.96162	13:42:00	D	3.80
121	FIROZPUR	FIROZPUR	S-NPP	74.52126	30.96211	13:42:00	D	13.70
122	FIROZPUR	FIROZPUR	S-NPP	74.71013	31.00523	13:42:00	D	3.50
123	FIROZPUR	FIROZPUR	S-NPP	74.63688	31.04303	13:42:00	D	2.00
124	FIROZPUR	FIROZPUR	S-NPP	74.64941	31.04822	13:42:00	D	2.20
125	FIROZPUR	ZIRA	S-NPP	75.23555	30.95262	13:42:00	D	11.90
126	FIROZPUR	ZIRA	S-NPP	75.23495	30.95614	13:42:00	D	31.60
127	FIROZPUR	ZIRA	S-NPP	74.92367	31.14952	13:42:00	D	5.50
128	GURDASPUR	BATALA	S-NPP	75.38140	31.64122	13:42:00	D	3.60
129	GURDASPUR	BATALA	S-NPP	75.31169	31.65432	13:42:00	D	12.10

130	GURDASPUR	BATALA	S-NPP	75.23631	31.70274	13:42:00	D	5.80
131	GURDASPUR	BATALA	S-NPP	75.24642	31.73536	13:42:00	D	11.50
132	GURDASPUR	BATALA	S-NPP	75.20714	31.74129	13:42:00	D	2.10
133	GURDASPUR	BATALA	S-NPP	75.24990	31.74303	13:42:00	D	4.20
134	GURDASPUR	BATALA	S-NPP	75.26807	31.74894	13:42:00	D	1.80
135	GURDASPUR	BATALA	S-NPP	75.32935	31.75660	13:42:00	D	5.60
136	GURDASPUR	BATALA	S-NPP	75.30909	31.79040	13:42:00	D	3.20
137	GURDASPUR	BATALA	S-NPP	75.04026	31.81002	13:42:00	D	2.20
138	GURDASPUR	BATALA	S-NPP	75.26895	31.83868	13:42:00	D	7.40
139	GURDASPUR	BATALA	S-NPP	75.13931	31.84054	13:42:00	D	3.10
140	GURDASPUR	BATALA	S-NPP	75.12937	31.84290	13:42:00	D	5.30
141	GURDASPUR	BATALA	S-NPP	75.10487	31.84701	13:42:00	D	4.30
142	GURDASPUR	BATALA	S-NPP	75.06592	31.85287	13:42:00	D	4.50
143	GURDASPUR	BATALA	S-NPP	74.99232	31.86861	13:42:00	D	8.20
144	GURDASPUR	BATALA	S-NPP	75.09130	31.87053	13:42:00	D	2.30
145	GURDASPUR	BATALA	S-NPP	75.04529	31.88984	13:42:00	D	2.60
146	GURDASPUR	DERA BABA NANAK	S-NPP	75.09209	31.95644	13:42:00	D	2.00
147	GURDASPUR	DERA BABA NANAK	TERRA	75.12400	31.99300	11:25:00	D	17.60
148	GURDASPUR	DERA BABA NANAK	S-NPP	75.05779	32.01699	13:42:00	D	3.60
149	GURDASPUR	DERA BABA NANAK	S-NPP	75.09254	32.04620	13:42:00	D	3.20
150	GURDASPUR	GURDASPUR	S-NPP	75.48209	31.93091	13:42:00	D	4.30
151	GURDASPUR	GURDASPUR	S-NPP	75.48328	31.95305	13:42:00	D	4.40
152	GURDASPUR	GURDASPUR	S-NPP	75.18813	31.95409	13:42:00	D	9.90
153	GURDASPUR	GURDASPUR	S-NPP	75.48267	31.95663	13:42:00	D	6.70
154	GURDASPUR	GURDASPUR	S-NPP	75.34766	32.03965	13:42:00	D	2.10
155	GURDASPUR	GURDASPUR	S-NPP	75.23476	32.08581	13:42:00	D	2.40
156	HOSHIARPUR	DASUYA	S-NPP	75.68782	31.60801	13:42:00	D	2.50
157	HOSHIARPUR	HOSHIARPUR	S-NPP	76.02011	31.50041	13:42:00	D	4.70
158	HOSHIARPUR	MUKERIAN	S-NPP	75.63800	31.98756	13:42:00	D	3.30
159	JALANDHAR	JALANDHAR II	S-NPP	75.55388	31.45858	13:42:00	D	5.40
160	JALANDHAR	JALANDHAR II	S-NPP	75.58915	31.48125	13:42:00	D	15.30
161	JALANDHAR	NAKODAR	S-NPP	75.45049	30.99138	13:42:00	D	2.90
162	JALANDHAR	SHAHKOT	S-NPP	75.38759	31.00791	13:42:00	D	3.10

163	JALANDHAR	SHAHKOT	S-NPP	75.40256	31.03151	13:42:00	D	3.40
164	JALANDHAR	SHAHKOT	S-NPP	75.25797	31.04907	13:42:00	D	2.90
165	JALANDHAR	SHAHKOT	S-NPP	75.25737	31.05260	13:42:00	D	9.20
166	JALANDHAR	SHAHKOT	S-NPP	75.19002	31.09740	13:42:00	D	7.80
167	JALANDHAR	SHAHKOT	S-NPP	75.29146	31.13559	13:42:00	D	10.20
168	KAPURTHALA	BHOLATH	S-NPP	75.46984	31.53351	13:42:00	D	9.50
169	KAPURTHALA	BHOLATH	S-NPP	75.46803	31.53543	13:42:00	D	13.90
170	KAPURTHALA	BHOLATH	S-NPP	75.51569	31.55011	13:42:00	D	2.80
171	KAPURTHALA	KAPURTHALA	S-NPP	75.23206	31.36473	13:42:00	D	4.10
172	KAPURTHALA	KAPURTHALA	S-NPP	75.32964	31.37725	13:42:00	D	3.70
173	KAPURTHALA	KAPURTHALA	S-NPP	75.26052	31.42917	13:42:00	D	7.90
174	KAPURTHALA	KAPURTHALA	S-NPP	75.24598	31.43095	13:42:00	D	18.20
175	KAPURTHALA	SULTANPUR LODHI	S-NPP	75.14770	31.19257	13:42:00	D	2.60
176	KAPURTHALA	SULTANPUR LODHI	S-NPP	75.16814	31.20955	13:42:00	D	5.10
177	KAPURTHALA	SULTANPUR LODHI	TERRA	75.16600	31.27300	11:30:00	D	11.30
178	KAPURTHALA	SULTANPUR LODHI	S-NPP	75.16180	31.27345	13:42:00	D	4.60
179	KAPURTHALA	SULTANPUR LODHI	S-NPP	75.16639	31.27405	13:42:00	D	4.00
180	KAPURTHALA	SULTANPUR LODHI	S-NPP	75.16246	31.27662	13:42:00	D	3.30
181	KAPURTHALA	SULTANPUR LODHI	S-NPP	75.16120	31.27697	13:42:00	D	2.40
182	KAPURTHALA	SULTANPUR LODHI	S-NPP	75.25361	31.34945	13:42:00	D	5.00
183	LUDHIANA	JAGRAON	S-NPP	75.43156	30.78741	13:42:00	D	5.60
184	LUDHIANA	JAGRAON	S-NPP	75.50782	30.96244	13:42:00	D	8.80
185	LUDHIANA	KHANNA	S-NPP	76.30431	30.70204	13:42:00	D	7.40
186	LUDHIANA	KHANNA	S-NPP	76.15662	30.70650	13:42:00	D	8.10
187	LUDHIANA	KHANNA	S-NPP	76.16155	30.70711	13:42:00	D	2.60
188	LUDHIANA	KHANNA	S-NPP	76.15603	30.71015	13:42:00	D	8.10
189	LUDHIANA	KHANNA	S-NPP	76.23731	30.73880	13:42:00	D	26.30
190	LUDHIANA	KHANNA	S-NPP	76.25251	30.77060	13:42:00	D	11.80
191	LUDHIANA	PAYAL	S-NPP	76.05193	30.73440	13:42:00	D	5.10
192	LUDHIANA	RAIKOT	S-NPP	75.74065	30.68773	13:42:00	D	9.30
193	LUDHIANA	SAMRALA	TERRA	76.17900	30.75800	11:30:00	D	12.70
194	LUDHIANA	SAMRALA	S-NPP	76.25465	30.76954	13:42:00	D	3.80
195	LUDHIANA	SAMRALA	S-NPP	76.25405	30.77321	13:42:00	D	4.00

196	LUDHIANA	SAMRALA	S-NPP	76.30983	30.92493	13:42:00	D	3.30
197	LUDHIANA	SAMRALA	S-NPP	76.27013	30.98019	13:42:00	D	16.30
198	LUDHIANA	SAMRALA	S-NPP	76.26678	30.98188	13:42:00	D	3.90
199	LUDHIANA	SAMRALA	S-NPP	76.27962	30.98512	13:42:00	D	3.40
200	MANSA	BUDHLADA	S-NPP	75.72249	29.82845	13:42:00	D	4.10
201	MANSA	BUDHLADA	S-NPP	75.72037	29.91029	13:42:00	D	4.30
202	MOGA	NIHAL SINGH WALA	S-NPP	75.22109	30.69227	13:42:00	D	3.30
203	MUKTSAR	GIDDARBAHA	S-NPP	74.65458	30.35988	13:42:00	D	4.00
204	MUKTSAR	MUKTSAR	S-NPP	74.43975	30.33803	13:42:00	D	4.30
205	PATIALA	NABHA	S-NPP	76.06560	30.40247	13:42:00	D	1.90
206	PATIALA	NABHA	S-NPP	76.17282	30.51976	13:42:00	D	22.50
207	PATIALA	PATIALA	S-NPP	76.47585	30.15037	13:42:00	D	1.90
208	PATIALA	PATIALA	S-NPP	76.47746	30.15254	13:42:00	D	3.70
209	PATIALA	PATIALA	S-NPP	76.50468	30.16147	13:42:00	D	1.70
210	PATIALA	PATIALA	S-NPP	76.53535	30.17447	13:42:00	D	3.80
211	PATIALA	PATIALA	S-NPP	76.57011	30.18238	13:42:00	D	4.70
212	PATIALA	PATIALA	S-NPP	76.53336	30.21943	13:42:00	D	4.70
213	PATIALA	PATIALA	S-NPP	76.35323	30.24515	13:42:00	D	16.80
214	PATIALA	PATIALA	S-NPP	76.45718	30.24771	13:42:00	D	3.40
215	PATIALA	PATIALA	S-NPP	76.52245	30.25578	13:42:00	D	1.60
216	PATIALA	PATIALA	S-NPP	76.49577	30.27718	13:42:00	D	4.10
217	PATIALA	PATIALA	S-NPP	76.50414	30.40400	13:42:00	D	4.80
218	PATIALA	PATIALA	S-NPP	76.50957	30.43482	13:42:00	D	4.40
219	PATIALA	RAJPURA	S-NPP	76.65087	30.31073	13:42:00	D	56.40
220	PATIALA	RAJPURA	S-NPP	76.62322	30.38702	13:42:00	D	3.30
221	PATIALA	RAJPURA	S-NPP	76.56606	30.43787	13:42:00	D	3.50
222	PATIALA	RAJPURA	S-NPP	76.71796	30.47133	13:42:00	D	2.30
223	PATIALA	RAJPURA	S-NPP	76.54026	30.48551	13:42:00	D	4.80
224	PATIALA	RAJPURA	S-NPP	76.59220	30.55225	13:42:00	D	5.60
225	PATIALA	RAJPURA	S-NPP	76.61156	30.56217	13:42:00	D	5.30
226	PATIALA	RAJPURA	S-NPP	76.60291	30.58390	13:42:00	D	4.20
227	PATIALA	RAJPURA	S-NPP	76.55560	30.58571	13:42:00	D	3.10
228	PATIALA	RAJPURA	S-NPP	76.60233	30.58762	13:42:00	D	4.20

229	PATIALA	RAJPURA	S-NPP	76.58824	30.62468	13:42:00	D	3.80
230	PATIALA	SAMANA	S-NPP	76.15961	29.85124	13:42:00	D	4.40
231	PATIALA	SAMANA	S-NPP	76.21555	29.86932	13:42:00	D	3.00
232	PATIALA	SAMANA	S-NPP	76.06306	29.87588	13:42:00	D	2.30
233	PATIALA	SAMANA	S-NPP	76.06247	29.87948	13:42:00	D	2.70
234	PATIALA	SAMANA	TERRA	76.22800	29.88200	11:30:00	D	18.30
235	PATIALA	SAMANA	S-NPP	76.09692	29.89183	13:42:00	D	2.40
236	PATIALA	SAMANA	S-NPP	76.24660	30.17688	13:42:00	D	5.50
237	RUPNAGAR	CHAMKOR SAHIB	S-NPP	76.54121	30.80618	13:42:00	D	4.30
238	RUPNAGAR	RUPNAGAR	S-NPP	76.55168	31.02660	13:42:00	D	4.50
239	SANGRUR	MOONAK	S-NPP	75.86434	29.79941	13:42:00	D	2.90
240	SANGRUR	MOONAK	S-NPP	75.87832	29.80118	13:42:00	D	4.40
241	SANGRUR	MOONAK	S-NPP	75.75649	29.82198	13:42:00	D	5.70
242	SANGRUR	MOONAK	S-NPP	75.99850	29.85665	13:42:00	D	3.30
243	SANGRUR	MOONAK	S-NPP	76.01740	29.85905	13:42:00	D	2.50
244	SANGRUR	MOONAK	S-NPP	75.93114	29.87138	13:42:00	D	2.60
245	SANGRUR	MOONAK	S-NPP	75.93055	29.87496	13:42:00	D	2.90
246	SANGRUR	SANGRUR	TERRA	76.07400	30.23000	11:30:00	D	11.70
247	SANGRUR	SANGRUR	S-NPP	76.05672	30.23144	13:42:00	D	7.90
248	SANGRUR	SANGRUR	TERRA	76.06000	30.23200	11:30:00	D	18.90
249	SANGRUR	SANGRUR	S-NPP	76.12218	30.31349	13:42:00	D	2.40
250	SANGRUR	SUNAM	S-NPP	75.89427	30.04763	13:42:00	D	2.50
251	SAS NAGAR	DERABASSI	S-NPP	76.76321	30.53828	13:42:00	D	7.60
252	SAS NAGAR	DERABASSI	S-NPP	76.83018	30.58831	13:42:00	D	2.50
253	SAS NAGAR	KHARAR	S-NPP	76.53463	30.74850	13:42:00	D	9.90
254	SAS NAGAR	KHARAR	S-NPP	76.59171	30.78572	13:42:00	D	2.10
255	SBS NAGAR	SBS NAGAR	S-NPP	76.19995	31.01513	13:42:00	D	12.10
256	SBS NAGAR	SBS NAGAR	S-NPP	76.19936	31.01880	13:42:00	D	10.90
257	TARN TARAN	KHADOOR SAHIB	S-NPP	74.99735	31.20186	13:42:00	D	6.00
258	TARN TARAN	KHADOOR SAHIB	S-NPP	75.00640	31.20303	13:42:00	D	4.70
259	TARN TARAN	KHADOOR SAHIB	S-NPP	74.99674	31.20535	13:42:00	D	3.00
260	TARN TARAN	KHADOOR SAHIB	S-NPP	75.00603	31.23158	13:42:00	D	8.20
261	TARN TARAN	KHADOOR SAHIB	S-NPP	75.00543	31.23508	13:42:00	D	6.30

262	TARN TARAN	KHADOOR SAHIB	S-NPP	75.06194	31.25680	13:42:00	D	3.70
263	TARN TARAN	KHADOOR SAHIB	S-NPP	74.91421	31.28777	13:42:00	D	6.50
264	TARN TARAN	KHADOOR SAHIB	AQUA	75.08400	31.33700	13:05:00	D	34.60
265	TARN TARAN	KHADOOR SAHIB	AQUA	75.08800	31.33900	13:05:00	D	34.90
266	TARN TARAN	KHADOOR SAHIB	S-NPP	75.08035	31.34511	13:42:00	D	1.90
267	TARN TARAN	KHADOOR SAHIB	S-NPP	75.07973	31.34862	13:42:00	D	1.90
268	TARN TARAN	KHADOOR SAHIB	S-NPP	75.10656	31.35570	13:42:00	D	2.30
269	TARN TARAN	KHADOOR SAHIB	S-NPP	74.91728	31.35677	13:42:00	D	1.30
270	TARN TARAN	KHADOOR SAHIB	S-NPP	75.00203	31.36712	13:42:00	D	2.50
271	TARN TARAN	KHADOOR SAHIB	S-NPP	75.05784	31.36728	13:42:00	D	6.40
272	TARN TARAN	KHADOOR SAHIB	S-NPP	74.87244	31.37595	13:42:00	D	18.40
273	TARN TARAN	KHADOOR SAHIB	S-NPP	74.87061	31.38640	13:42:00	D	6.00
274	TARN TARAN	KHADOOR SAHIB	S-NPP	74.87511	31.38698	13:42:00	D	6.00
275	TARN TARAN	KHADOOR SAHIB	S-NPP	75.00815	31.39344	13:42:00	D	3.00
276	TARN TARAN	KHADOOR SAHIB	S-NPP	74.87327	31.39743	13:42:00	D	7.80
277	TARN TARAN	KHADOOR SAHIB	S-NPP	74.80350	31.40255	13:42:00	D	4.10
278	TARN TARAN	KHADOOR SAHIB	S-NPP	75.08116	31.40279	13:42:00	D	6.80
279	TARN TARAN	KHADOOR SAHIB	S-NPP	75.08574	31.40337	13:42:00	D	6.80
280	TARN TARAN	KHADOOR SAHIB	S-NPP	74.75760	31.40361	13:42:00	D	2.70
281	TARN TARAN	KHADOOR SAHIB	S-NPP	75.11722	31.41098	13:42:00	D	2.50
282	TARN TARAN	KHADOOR SAHIB	S-NPP	75.11661	31.41450	13:42:00	D	3.10
283	TARN TARAN	KHADOOR SAHIB	TERRA	74.78500	31.41900	11:30:00	D	5.20
284	TARN TARAN	KHADOOR SAHIB	S-NPP	75.11539	31.42153	13:42:00	D	2.00
285	TARN TARAN	KHADOOR SAHIB	S-NPP	75.14175	31.43210	13:42:00	D	5.20
286	TARN TARAN	KHADOOR SAHIB	TERRA	74.80100	31.43600	11:30:00	D	6.30
287	TARN TARAN	KHADOOR SAHIB	TERRA	74.78900	31.43800	11:30:00	D	23.70
288	TARN TARAN	KHADOOR SAHIB	S-NPP	74.77379	31.44127	13:42:00	D	8.50
289	TARN TARAN	KHADOOR SAHIB	S-NPP	74.77460	31.44226	13:42:00	D	9.40
290	TARN TARAN	KHADOOR SAHIB	S-NPP	75.10654	31.44555	13:42:00	D	3.70
291	TARN TARAN	KHADOOR SAHIB	S-NPP	75.01720	31.44833	13:42:00	D	9.80
292	TARN TARAN	KHADOOR SAHIB	AQUA	75.04100	31.45200	13:05:00	D	25.90
293	TARN TARAN	KHADOOR SAHIB	S-NPP	74.70332	31.45785	13:42:00	D	2.10
294	TARN TARAN	KHADOOR SAHIB	S-NPP	75.10410	31.45961	13:42:00	D	17.20



295	TARN TARAN	KHADOOR SAHIB	S-NPP	74.85807	31.46369	13:42:00	D	2.20
296	TARN TARAN	KHADOOR SAHIB	S-NPP	74.67034	31.46416	13:42:00	D	6.80
297	TARN TARAN	KHADOOR SAHIB	S-NPP	74.66023	31.46992	13:42:00	D	2.00
298	TARN TARAN	KHADOOR SAHIB	S-NPP	74.81513	31.47238	13:42:00	D	2.40
299	TARN TARAN	KHADOOR SAHIB	S-NPP	74.88536	31.49216	13:42:00	D	5.00
300	TARN TARAN	KHADOOR SAHIB	S-NPP	75.08427	31.49976	13:42:00	D	4.60
301	TARN TARAN	KHADOOR SAHIB	S-NPP	75.17308	31.50379	13:42:00	D	4.10
302	TARN TARAN	KHADOOR SAHIB	TERRA	74.78800	31.51200	11:30:00	D	8.70
303	TARN TARAN	KHADOOR SAHIB	S-NPP	75.18576	31.51260	13:42:00	D	21.60
304	TARN TARAN	KHADOOR SAHIB	S-NPP	74.78472	31.51466	13:42:00	D	4.40
305	TARN TARAN	KHADOOR SAHIB	S-NPP	74.79633	31.52686	13:42:00	D	3.00
306	TARN TARAN	KHADOOR SAHIB	S-NPP	74.78491	31.53958	13:42:00	D	2.20
307	TARN TARAN	KHADOOR SAHIB	S-NPP	74.68069	31.54510	13:42:00	D	1.50
308	TARN TARAN	KHADOOR SAHIB	S-NPP	74.72871	31.54634	13:42:00	D	1.20
309	TARN TARAN	KHADOOR SAHIB	S-NPP	74.73042	31.54800	13:42:00	D	1.80
310	TARN TARAN	PATTI	S-NPP	74.68940	31.13672	13:42:00	D	3.20
311	TARN TARAN	PATTI	S-NPP	74.61474	31.15156	13:42:00	D	3.60
312	TARN TARAN	PATTI	S-NPP	74.81292	31.18131	13:42:00	D	3.80
313	TARN TARAN	PATTI	S-NPP	74.81738	31.18189	13:42:00	D	3.80
314	TARN TARAN	PATTI	S-NPP	74.81999	31.19289	13:42:00	D	2.80
315	TARN TARAN	PATTI	S-NPP	74.90875	31.20812	13:42:00	D	12.00
316	TARN TARAN	PATTI	S-NPP	74.88065	31.21155	13:42:00	D	5.00
317	TARN TARAN	PATTI	S-NPP	74.70296	31.21279	13:42:00	D	6.10
318	TARN TARAN	PATTI	S-NPP	74.70738	31.21338	13:42:00	D	7.50
319	TARN TARAN	PATTI	S-NPP	74.91203	31.21568	13:42:00	D	12.70
320	TARN TARAN	PATTI	S-NPP	74.58161	31.21591	13:42:00	D	5.00
321	TARN TARAN	PATTI	S-NPP	74.91142	31.21916	13:42:00	D	12.70
322	TARN TARAN	PATTI	S-NPP	74.74155	31.22503	13:42:00	D	2.60
323	TARN TARAN	PATTI	S-NPP	74.74223	31.22634	13:42:00	D	2.20
324	TARN TARAN	PATTI	S-NPP	74.74496	31.26213	13:42:00	D	2.10
325	TARN TARAN	PATTI	S-NPP	74.59116	31.26301	13:42:00	D	11.70
326	TARN TARAN	PATTI	S-NPP	74.60003	31.28889	13:42:00	D	9.30
327	TARN TARAN	PATTI	S-NPP	74.77904	31.32692	13:42:00	D	2.60

328	TARN TARAN	PATTI	S-NPP	74.69183	31.33827	13:42:00	D	1.50
329	TARN TARAN	PATTI	S-NPP	74.55136	31.34100	13:42:00	D	7.60
330	TARN TARAN	PATTI	TERRA	74.70400	31.35000	11:30:00	D	6.30
331	TARN TARAN	PATTI	S-NPP	74.63943	31.35262	13:42:00	D	3.30
332	TARN TARAN	PATTI	S-NPP	74.73315	31.36138	13:42:00	D	2.60
333	TARN TARAN	PATTI	S-NPP	74.72333	31.41682	13:42:00	D	1.60

**Details of residue burning events in Haryana on 11-Oct-2020**

<b>S. No.</b>	<b>District</b>	<b>Tehsil / Block</b>	<b>Satellite</b>	<b>Longitude</b>	<b>Latitude</b>	<b>Time (IST)</b>	<b>Day / Night</b>	<b>Fire Power (W/m<sup>2</sup>)</b>
1	AMBALA	AMBALA	S-NPP	76.62614	30.10846	13:42:00	D	6.30
2	AMBALA	AMBALA	TERRA	76.68600	30.22500	11:30:00	D	7.80
3	AMBALA	AMBALA	TERRA	76.67900	30.23300	11:30:00	D	8.00
4	AMBALA	AMBALA	S-NPP	76.91085	30.25318	13:42:00	D	6.80
5	AMBALA	AMBALA	S-NPP	76.80919	30.25644	13:42:00	D	21.30
6	AMBALA	AMBALA	S-NPP	76.77752	30.34096	13:42:00	D	5.50
7	AMBALA	AMBALA	S-NPP	76.78272	30.34158	13:42:00	D	5.50
8	AMBALA	BARARA	S-NPP	77.02737	30.17921	13:42:00	D	3.80
9	AMBALA	BARARA	S-NPP	77.03269	30.17983	13:42:00	D	6.50
10	AMBALA	BARARA	S-NPP	76.96451	30.20253	13:42:00	D	2.80
11	AMBALA	BARARA	S-NPP	76.96392	30.20630	13:42:00	D	6.00
12	AMBALA	BARARA	S-NPP	76.95807	30.20944	13:42:00	D	1.80
13	AMBALA	BARARA	TERRA	77.14200	30.22500	11:30:00	D	10.90
14	AMBALA	BARARA	TERRA	77.12700	30.22700	11:30:00	D	8.40
15	AMBALA	BARARA	TERRA	77.13400	30.23000	11:30:00	D	18.50
16	AMBALA	BARARA	S-NPP	77.04738	30.24216	13:42:00	D	3.80
17	FATEHABAD	FATEHABAD	S-NPP	75.66300	29.52592	13:42:00	D	2.30
18	FATEHABAD	FATEHABAD	S-NPP	75.66241	29.52945	13:42:00	D	2.30
19	FATEHABAD	FATEHABAD	S-NPP	75.43101	29.56761	13:42:00	D	4.40
20	FATEHABAD	TOHANA	S-NPP	75.80920	29.53458	13:42:00	D	2.10
21	FATEHABAD	TOHANA	S-NPP	75.84774	29.53844	13:42:00	D	5.10
22	FATEHABAD	TOHANA	S-NPP	75.85060	29.53998	13:42:00	D	5.70
23	FATEHABAD	TOHANA	S-NPP	75.88228	29.58640	13:42:00	D	10.00
24	FATEHABAD	TOHANA	S-NPP	75.79350	29.64629	13:42:00	D	4.00
25	FATEHABAD	TOHANA	S-NPP	75.86797	29.68111	13:42:00	D	4.70
26	HISAR	HISAR	S-NPP	75.72559	28.99934	13:42:00	D	6.30
27	HISAR	HISAR	S-NPP	75.86100	29.54373	13:42:00	D	3.10
28	JHAJJAR	JHAJJAR	S-NPP	76.59937	28.61251	13:42:00	D	8.30
29	JIND	JIND	S-NPP	76.27956	29.32107	13:42:00	D	3.00
30	JIND	JIND	S-NPP	76.28526	29.39254	13:42:00	D	2.10

31	JIND	JIND	S-NPP	76.37357	29.52543	13:42:00	D	3.00
32	JIND	NARWANA	S-NPP	76.03831	29.49478	13:42:00	D	3.50
33	JIND	NARWANA	S-NPP	76.05356	29.51866	13:42:00	D	4.80
34	JIND	NARWANA	S-NPP	76.02953	29.51927	13:42:00	D	3.40
35	JIND	NARWANA	S-NPP	76.11478	29.52641	13:42:00	D	2.60
36	JIND	NARWANA	S-NPP	76.12072	29.54919	13:42:00	D	5.00
37	JIND	NARWANA	S-NPP	76.18653	29.56124	13:42:00	D	2.10
38	JIND	NARWANA	S-NPP	76.22005	29.60673	13:42:00	D	4.80
39	JIND	NARWANA	S-NPP	76.02990	29.68317	13:42:00	D	4.00
40	JIND	SAFIDON	S-NPP	76.48304	29.33892	13:42:00	D	3.60
41	JIND	SAFIDON	S-NPP	76.49766	29.34072	13:42:00	D	2.70
42	JIND	SAFIDON	S-NPP	76.53009	29.43738	13:42:00	D	2.40
43	KAITHAL	GUHLA	S-NPP	76.30446	30.01006	13:42:00	D	4.00
44	KAITHAL	GUHLA	S-NPP	76.29451	30.02353	13:42:00	D	5.40
45	KAITHAL	GUHLA	S-NPP	76.29723	30.02404	13:42:00	D	5.60
46	KAITHAL	GUHLA	S-NPP	76.32764	30.03498	13:42:00	D	2.60
47	KAITHAL	GUHLA	S-NPP	76.39687	30.07322	13:42:00	D	3.50
48	KAITHAL	GUHLA	S-NPP	76.26868	30.09101	13:42:00	D	4.30
49	KAITHAL	KAITHAL	S-NPP	76.47008	29.57454	13:42:00	D	3.80
50	KAITHAL	KAITHAL	S-NPP	76.41208	29.60796	13:42:00	D	2.70
51	KAITHAL	KAITHAL	S-NPP	76.45026	29.64985	13:42:00	D	9.40
52	KAITHAL	KAITHAL	S-NPP	76.29163	29.78218	13:42:00	D	4.30
53	KAITHAL	KAITHAL	S-NPP	76.27092	29.83174	13:42:00	D	2.20
54	KAITHAL	KAITHAL	S-NPP	76.40819	29.84476	13:42:00	D	3.80
55	KAITHAL	KAITHAL	S-NPP	76.64121	29.84644	13:42:00	D	2.50
56	KAITHAL	KAITHAL	S-NPP	76.27711	29.85475	13:42:00	D	3.60
57	KAITHAL	KAITHAL	S-NPP	76.51141	29.86101	13:42:00	D	6.70
58	KAITHAL	KAITHAL	S-NPP	76.67869	29.86976	13:42:00	D	5.80
59	KAITHAL	KAITHAL	TERRA	76.38300	29.90400	11:30:00	D	9.70
60	KAITHAL	KAITHAL	TERRA	76.37000	29.90700	11:30:00	D	8.70
61	KAITHAL	KAITHAL	TERRA	76.37900	29.90800	11:30:00	D	20.60
62	KAITHAL	KAITHAL	S-NPP	76.34256	29.91121	13:42:00	D	30.30
63	KARNAL	ASSANDH	S-NPP	76.60124	29.57195	13:42:00	D	18.20
64	KARNAL	ASSANDH	TERRA	76.56600	29.58600	11:30:00	D	9.10

65	KARNAL	ASSANDH	S-NPP	76.59543	29.60877	13:42:00	D	2.70
66	KARNAL	ASSANDH	S-NPP	76.58433	29.61490	13:42:00	D	3.90
67	KARNAL	ASSANDH	S-NPP	76.69505	29.63806	13:42:00	D	3.40
68	KARNAL	GHARAUNDA	S-NPP	77.05442	29.47339	13:42:00	D	11.80
69	KARNAL	GHARAUNDA	S-NPP	76.91779	29.50688	13:42:00	D	2.80
70	KARNAL	GHARAUNDA	S-NPP	76.96806	29.52054	13:42:00	D	7.30
71	KARNAL	GHARAUNDA	S-NPP	77.05212	29.55744	13:42:00	D	4.10
72	KARNAL	GHARAUNDA	S-NPP	77.07777	29.57924	13:42:00	D	5.70
73	KARNAL	GHARAUNDA	S-NPP	77.08055	29.58007	13:42:00	D	6.20
74	KARNAL	GHARAUNDA	S-NPP	77.04176	29.60574	13:42:00	D	7.30
75	KARNAL	INDRI	S-NPP	77.02389	29.86041	13:42:00	D	2.20
76	KARNAL	INDRI	S-NPP	77.04849	29.92856	13:42:00	D	3.80
77	KARNAL	INDRI	S-NPP	77.00346	29.94251	13:42:00	D	2.90
78	KARNAL	KARNAL	S-NPP	76.76590	29.62976	13:42:00	D	2.20
79	KARNAL	KARNAL	S-NPP	76.78559	29.63596	13:42:00	D	3.40
80	KARNAL	KARNAL	S-NPP	76.78203	29.67483	13:42:00	D	5.40
81	KARNAL	KARNAL	S-NPP	76.71715	29.69354	13:42:00	D	2.10
82	KARNAL	KARNAL	AQUA	76.84400	29.70100	13:05:00	D	27.30
83	KARNAL	KARNAL	S-NPP	76.74403	29.71949	13:42:00	D	6.50
84	KARNAL	KARNAL	S-NPP	76.74345	29.72320	13:42:00	D	6.50
85	KARNAL	KARNAL	S-NPP	77.00625	29.75114	13:42:00	D	5.60
86	KARNAL	KARNAL	S-NPP	76.99988	29.79255	13:42:00	D	4.10
87	KARNAL	KARNAL	S-NPP	76.97041	29.79274	13:42:00	D	12.00
88	KARNAL	KARNAL	S-NPP	76.97562	29.79334	13:42:00	D	18.00
89	KARNAL	KARNAL	S-NPP	76.99650	29.79577	13:42:00	D	23.70
90	KARNAL	NILOKHERI	S-NPP	76.90980	29.80856	13:42:00	D	5.70
91	KARNAL	NILOKHERI	S-NPP	76.90922	29.81230	13:42:00	D	5.70
92	KURUKSHETRA	PEHOWA	S-NPP	76.64526	29.91861	13:42:00	D	4.70
93	KURUKSHETRA	PEHOWA	S-NPP	76.63531	30.08310	13:42:00	D	2.60
94	KURUKSHETRA	PEHOWA	S-NPP	76.74978	30.14989	13:42:00	D	4.40
95	KURUKSHETRA	SHAHABAD	S-NPP	76.76473	30.12124	13:42:00	D	7.80
96	KURUKSHETRA	SHAHABAD	S-NPP	76.93875	30.19558	13:42:00	D	2.90
97	KURUKSHETRA	THANESAR	S-NPP	76.73732	29.89187	13:42:00	D	3.60
98	KURUKSHETRA	THANESAR	S-NPP	76.78898	29.98235	13:42:00	D	1.70

99	KURUKSHETRA	THANESAR	TERRA	77.06700	30.03000	11:30:00	D	9.30
100	KURUKSHETRA	THANESAR	TERRA	77.05100	30.03300	11:30:00	D	15.30
101	KURUKSHETRA	THANESAR	S-NPP	76.82431	30.05891	13:42:00	D	2.20
102	KURUKSHETRA	THANESAR	S-NPP	76.74543	30.07714	13:42:00	D	3.00
103	KURUKSHETRA	THANESAR	S-NPP	76.87903	30.08080	13:42:00	D	3.40
104	KURUKSHETRA	THANESAR	S-NPP	77.04601	30.10863	13:42:00	D	1.70
105	KURUKSHETRA	THANESAR	TERRA	76.78000	30.11000	11:30:00	D	12.10
106	KURUKSHETRA	THANESAR	TERRA	76.77500	30.11600	11:30:00	D	12.50
107	PANCHKULA	PANCHKULA	S-NPP	76.96503	30.50077	13:42:00	D	5.50
108	PANIPAT	ISRANA	S-NPP	76.90047	29.24843	13:42:00	D	2.70
109	SIRSA	SIRSA	S-NPP	75.06731	29.59852	13:42:00	D	4.70
110	YAMUNANAGAR	CHHACHHRAULII	S-NPP	77.41121	30.29544	13:42:00	D	26.40
111	YAMUNANAGAR	JAGADHRI	TERRA	77.26800	30.24900	11:30:00	D	13.20
112	YAMUNANAGAR	JAGADHRI	S-NPP	77.17725	30.28820	13:42:00	D	3.60

**Details of residue burning events in Uttar Pradesh on 11-Oct-2020**

S. No.	District	Tehsil / Block	Satellite	Longitude	Latitude	Time (IST)	Day / Night	Fire Power (W/m <sup>2</sup> )
1	AGRA	KHAIRIGARH	S-NPP	77.80161	26.98859	13:42:00	D	1.70
2	AGRA	KHAIRIGARH	S-NPP	77.79877	26.98898	13:42:00	D	2.20
3	ALIGARH	GABHANA	S-NPP	77.83868	28.04317	02:24:00	N	0.70
4	BARABANKI	NAWABGANJ	S-NPP	81.37872	26.85746	02:24:00	N	0.30
5	BARABANKI	RAMNAGAR	S-NPP	81.31841	27.14759	13:42:00	D	10.60
6	BAREILLY	BAHERI	S-NPP	79.38953	28.68384	13:42:00	D	2.40
7	BAREILLY	BAHERI	S-NPP	79.39227	28.86098	02:24:00	N	0.50
8	KANPUR DEHAT	AKBARPUR	S-NPP	80.04220	26.40195	13:42:00	D	3.80
9	KAUSHAMBI	MANJHANPUR	S-NPP	81.47868	25.45175	13:42:00	D	1.00
10	KHERI	GOLA	S-NPP	80.42159	28.18014	13:42:00	D	2.90
11	MATHURA	MAT	METOP-2	77.77811	27.73871	20:46:00	N	7.50
12	MATHURA	MAT	S-NPP	77.81834	27.75752	02:24:00	N	0.60
13	RAMPUR	BILASPUR	S-NPP	79.34811	28.88398	13:42:00	D	6.90
14	RAMPUR	BILASPUR	S-NPP	79.39737	28.92795	13:42:00	D	11.40
15	RAMPUR	BILASPUR	AQUA	79.40200	28.94300	13:00:00	D	95.60
16	SHAHJAHANPUR	PUWANYA	S-NPP	80.15385	28.08262	13:42:00	D	2.70
17	SHAHJAHANPUR	PUWANYA	S-NPP	80.19303	28.08879	02:24:00	N	1.60
18	SHARANPUR	BEHAT	S-NPP	77.54610	30.14802	13:42:00	D	8.70
19	SITAPUR	MAHMUDABAD	S-NPP	81.05035	27.23825	13:42:00	D	4.50
20	SITAPUR	MAHMUDABAD	S-NPP	81.05325	27.24017	13:42:00	D	5.00
21	SITAPUR	MAHMUDABAD	S-NPP	81.17452	27.38013	13:42:00	D	3.70
22	SITAPUR	SITAPUR	S-NPP	80.81139	27.44217	13:42:00	D	3.50

## The study used images received from following Satellites at IARI Satellite Ground Station

S. No.	Satellite Name	Sensor	Resolution (meter)	Day / Night Passes
1.	Suomi NPP	VIIRS	375 / 750	Both
2.	Terra	MODIS	1000	Both
3.	Aqua	MODIS	1000	Both
4.	NOAA – 18	AVHRR	1000	Night
5.	NOAA – 19	AVHRR	1000	Night
6.	Metop - 1	AVHRR	1000	Night
7.	Metop - 2	AVHRR	1000	Night

### Study Team

ICAR – HQ	Dr K. Alagusundaram	DDG (AG. ENGG.)	<a href="mailto:ddgengg@icar.org.in">ddgengg@icar.org.in</a>
	Dr S. Bhasker	ADG (NRM)	<a href="mailto:adgagroandaf@gmail.com">adgagroandaf@gmail.com</a>
	Dr K.K. Singh	ADG (AG. ENGG)	<a href="mailto:kanchansingh044@gmail.com">kanchansingh044@gmail.com</a>
ICAR - IARI	<b>Dr V.K. Sehgal</b>	<b>Professor &amp; Nodal Scientist</b>	<a href="mailto:iaricreams@gmail.com">iaricreams@gmail.com</a>
	Dr Rajkumar Dhakar	Scientist	<a href="mailto:raidhakar.iari@gmail.com">raidhakar.iari@gmail.com</a>
	Mr Rakeswer Verma	Chief Technical Officer	<a href="mailto:rakeshwar.verma@icar.gov.in">rakeshwar.verma@icar.gov.in</a>
	Mr Mohd Jahangir	Lab Assistant (KRISHI)	<a href="mailto:mjahangir198@gmail.com">mjahangir198@gmail.com</a>
ICAR - ATARI	Dr Rajbir Singh	Director ATARI (Zone-I) Ludhiana	<a href="mailto:rajbirsingh.zpd@gmail.com">rajbirsingh.zpd@gmail.com</a>
	Dr S.K. Singh	Director ATARI (Zone-II) Jodhpur	<a href="mailto:sushilsinghiipr@yahoo.co.in">sushilsinghiipr@yahoo.co.in</a>
	Dr Atar Singh	Director ATARI (Zone-III) Kanpur	<a href="mailto:zpdicarkanpur@gmail.com">zpdicarkanpur@gmail.com</a>
ICAR - IASRI	Dr Rajender Parsad	Director IASRI	<a href="mailto:rajender.parsad@icar.gov.in">rajender.parsad@icar.gov.in</a>

Softcopy of this report and latest statistics can be seen on <http://creams.iari.res.in>

GIS Maps of fire events can be visualized online on ICAR KRISHI Geoportal website: <http://geoportal.icar.gov.in:8080/geoexplorer/composer/>

(Part of KRISHI Portal: <https://krishi.icar.gov.in> initiative)

\*\*\*