

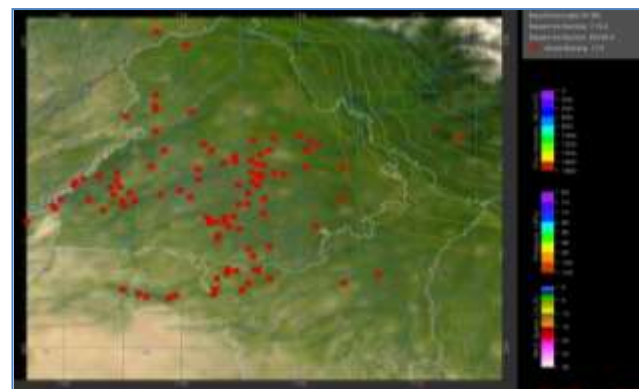


MONITORING PADDY RESIDUE BURNING IN NORTH INDIA USING SATELLITE REMOTE SENSING DURING 2020

**Bulletin
No. 18**

**Events Date:
18-Oct-2020**

**Issued on:
19-Oct-2020**



Prepared by:

**Consortium for Research on Agroecosystem Monitoring and Modeling from Space (CREAMS) Laboratory,
Division of Agricultural Physics, ICAR – Indian Agricultural Research Institute, New Delhi – 110012**

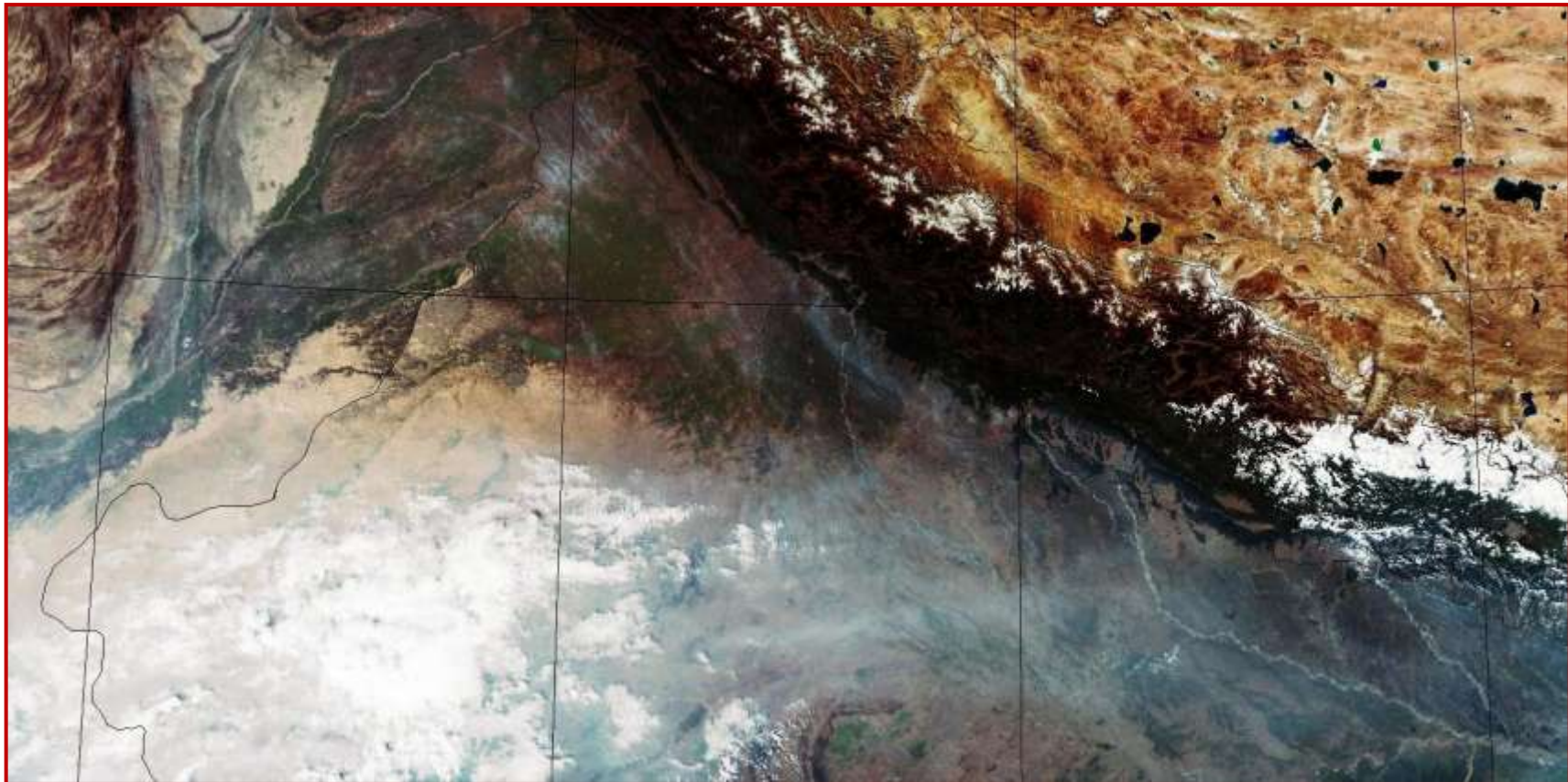
<http://creams.iari.res.in>



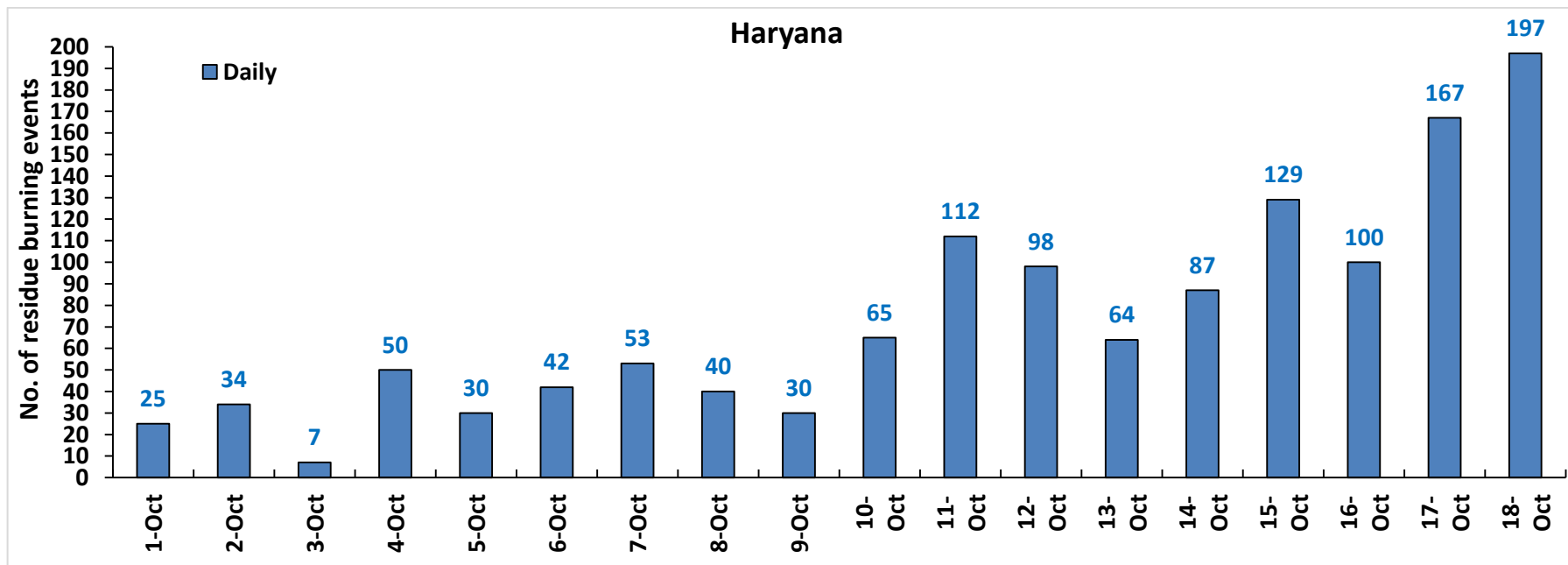
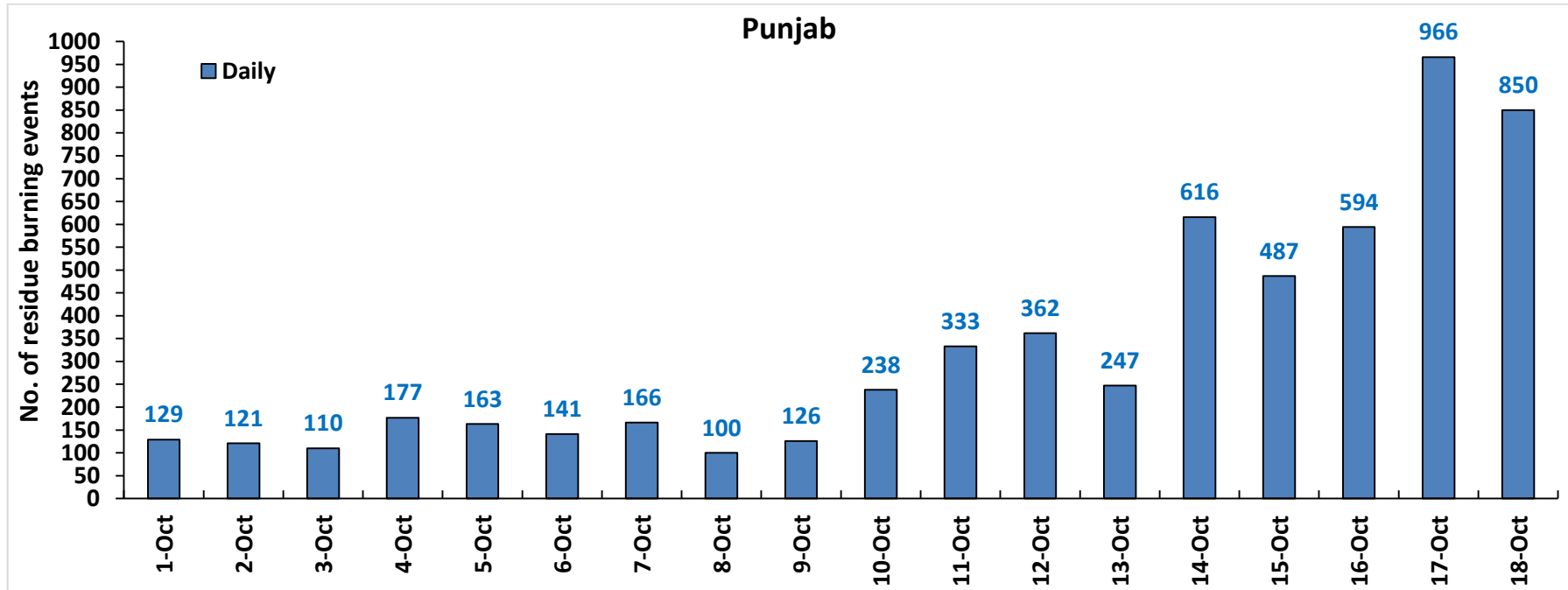
Highlights for 18-October-2020

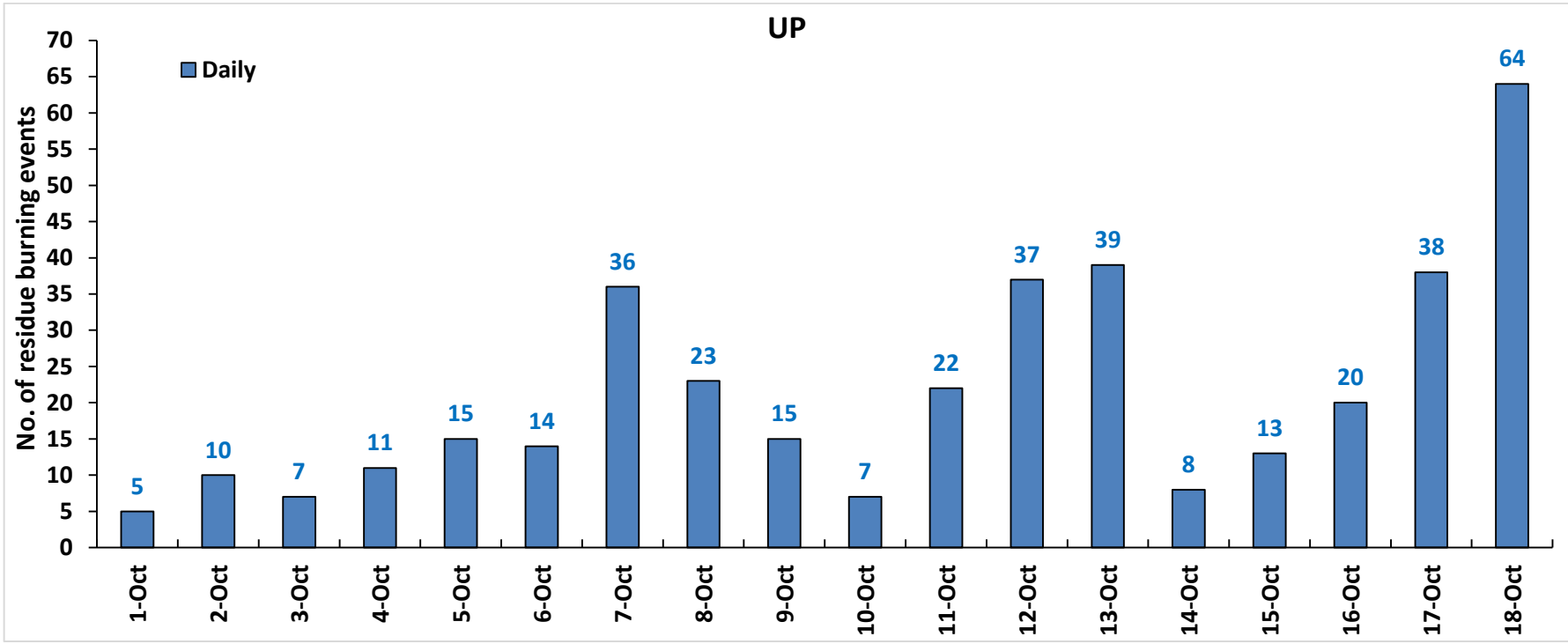
- Satellites detected **1111** residue burning events in the three study States on 18-Oct-2020.
- The state wise events detected on **18-Oct-2020** were **850** in Punjab, **197** in Haryana and **64** in UP.
- The number of events has decreased from **1171** on **17-Oct-2020** to **1111** on **18-Oct-2020** in the three states.
- Tarn Taran in Punjab, Karnal in Haryana and Rampur in UP reported the highest number of events on **18-Oct-2020**.
- Total **7640** burning events were detected in the three States between **01-Oct-2020** and **18-Oct-2020**, which are distributed as **5926**, **1330** and **384** in Punjab, Haryana and UP, respectively.
- In Haryana and UP, the cumulative number of burning events between **1-Oct** and **18-Oct 2020** were lower than in **2019**, while in Punjab the cumulative number of events were more than in **2019**.

[S-NPP \(VIIRS\) Satellite image of North India Acquired on 18-Oct-2020 at 14:29 by IARI Ground Station](#)



Temporal distribution of residue burning events for the three study States in 2020

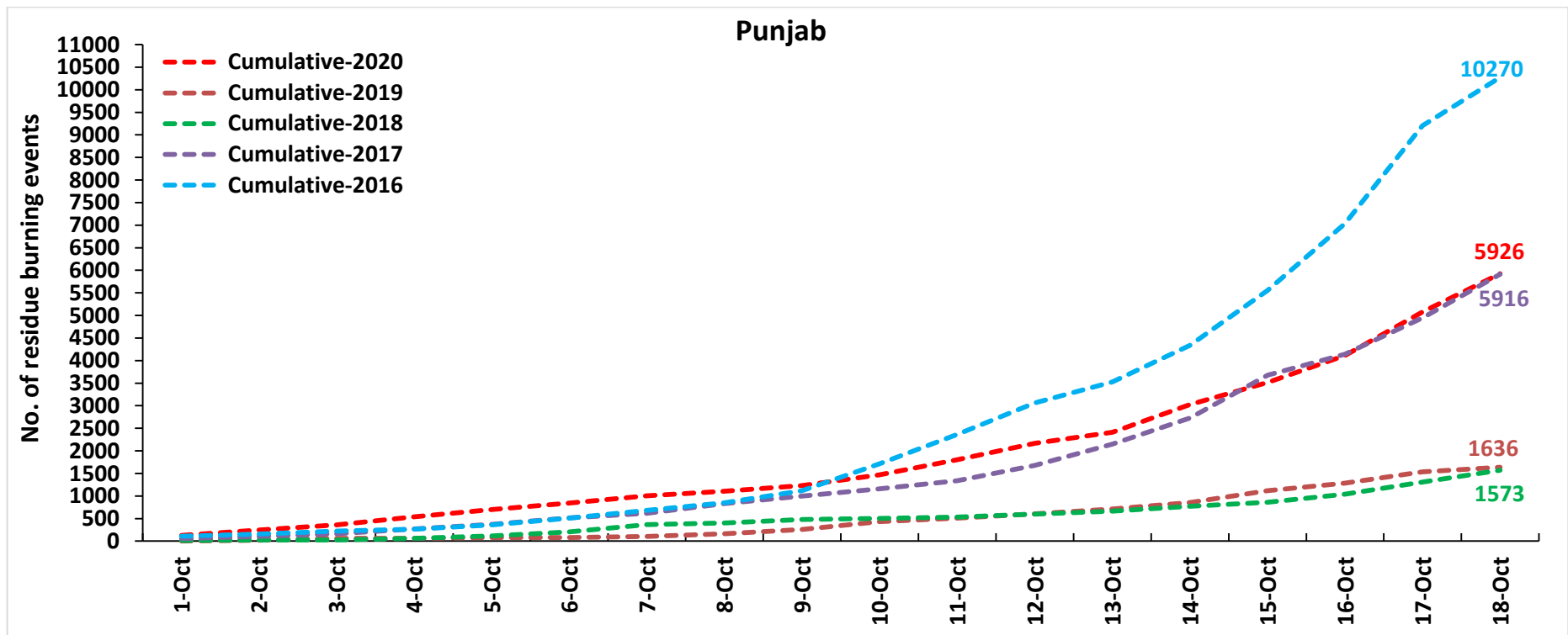


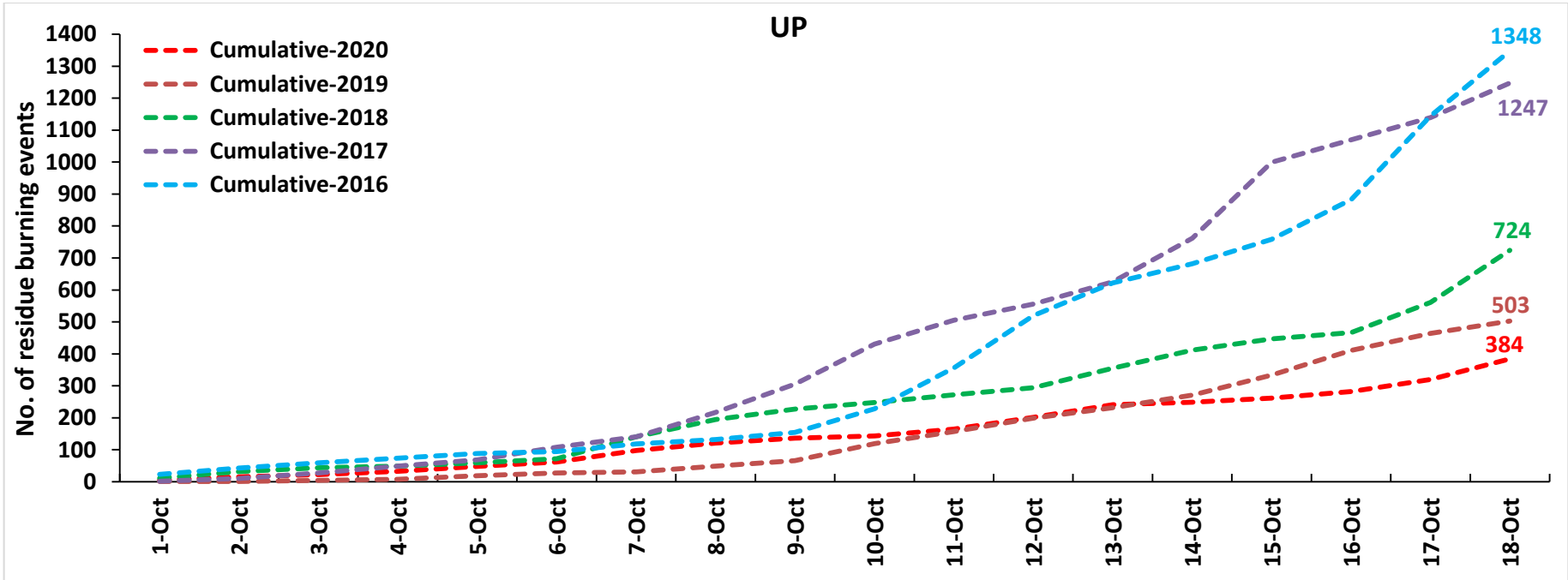
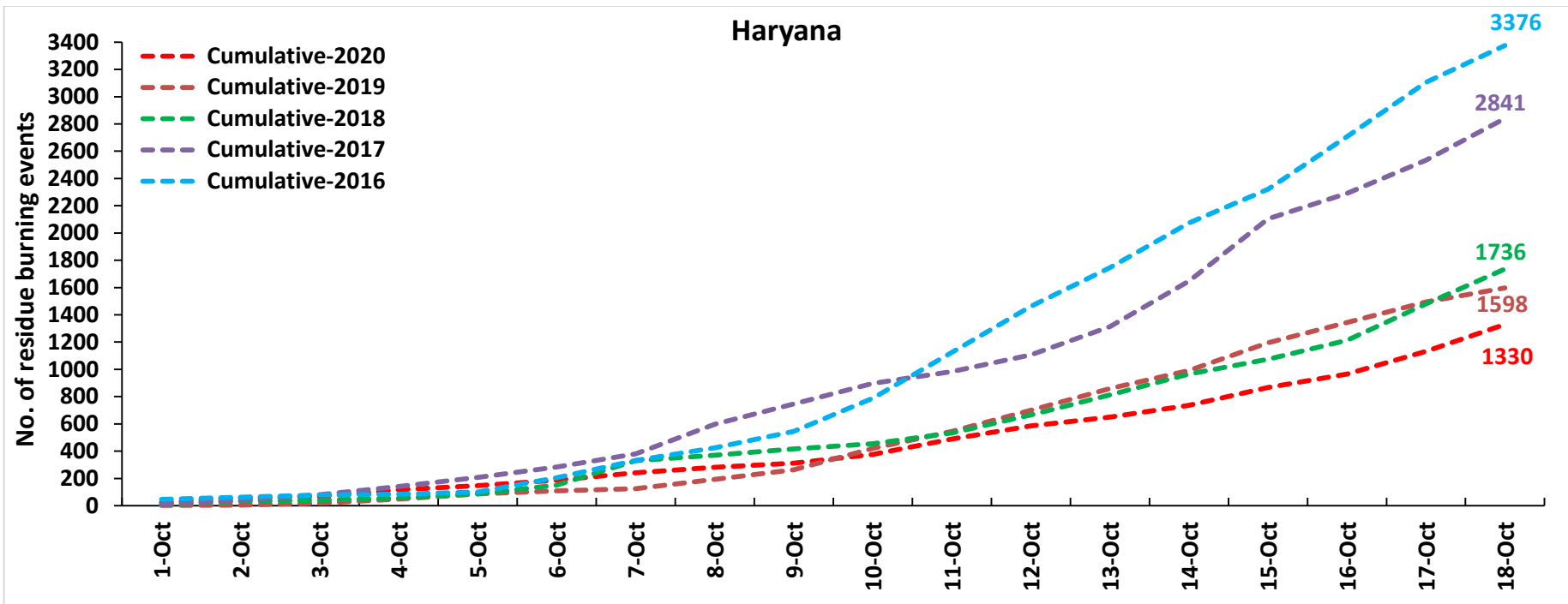


Comparison of residue burning events in current year (2020) with previous years (2019, 2018, 2017 & 2016) for the three study States

(01-Oct to 18-Oct)

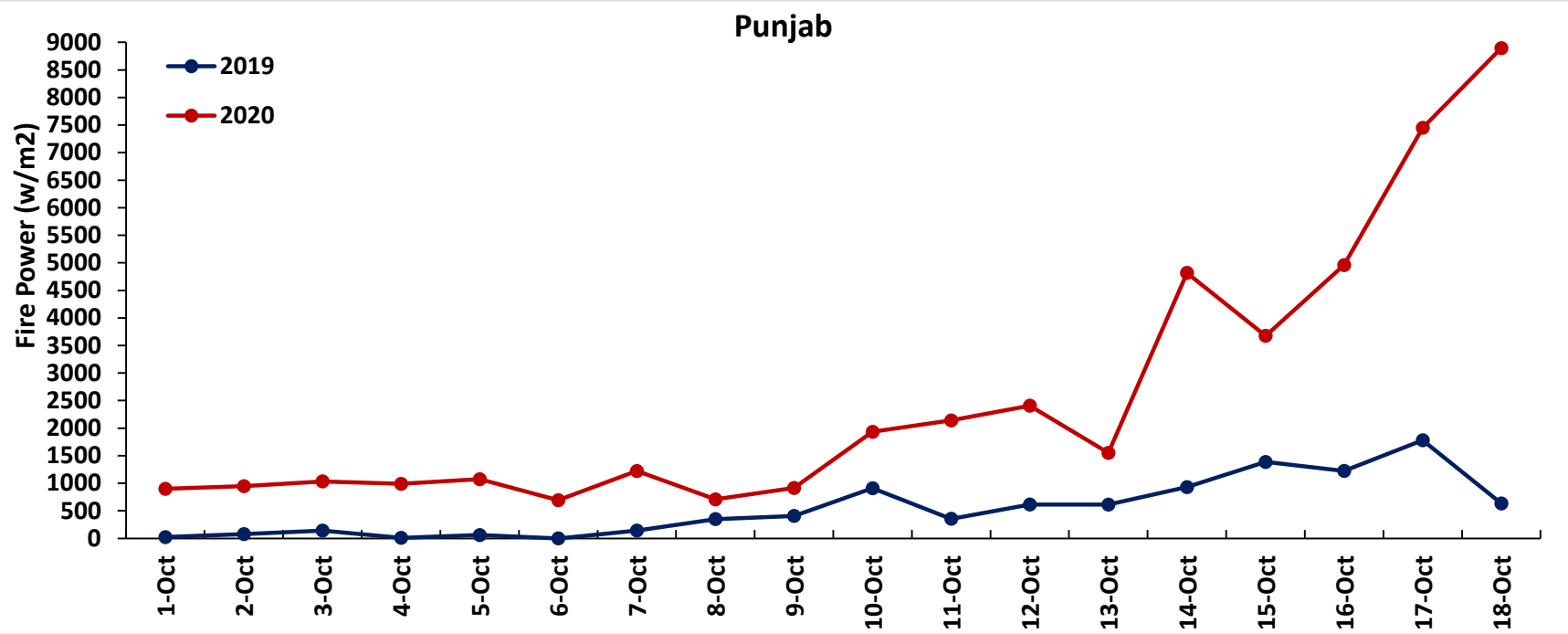
Punjab

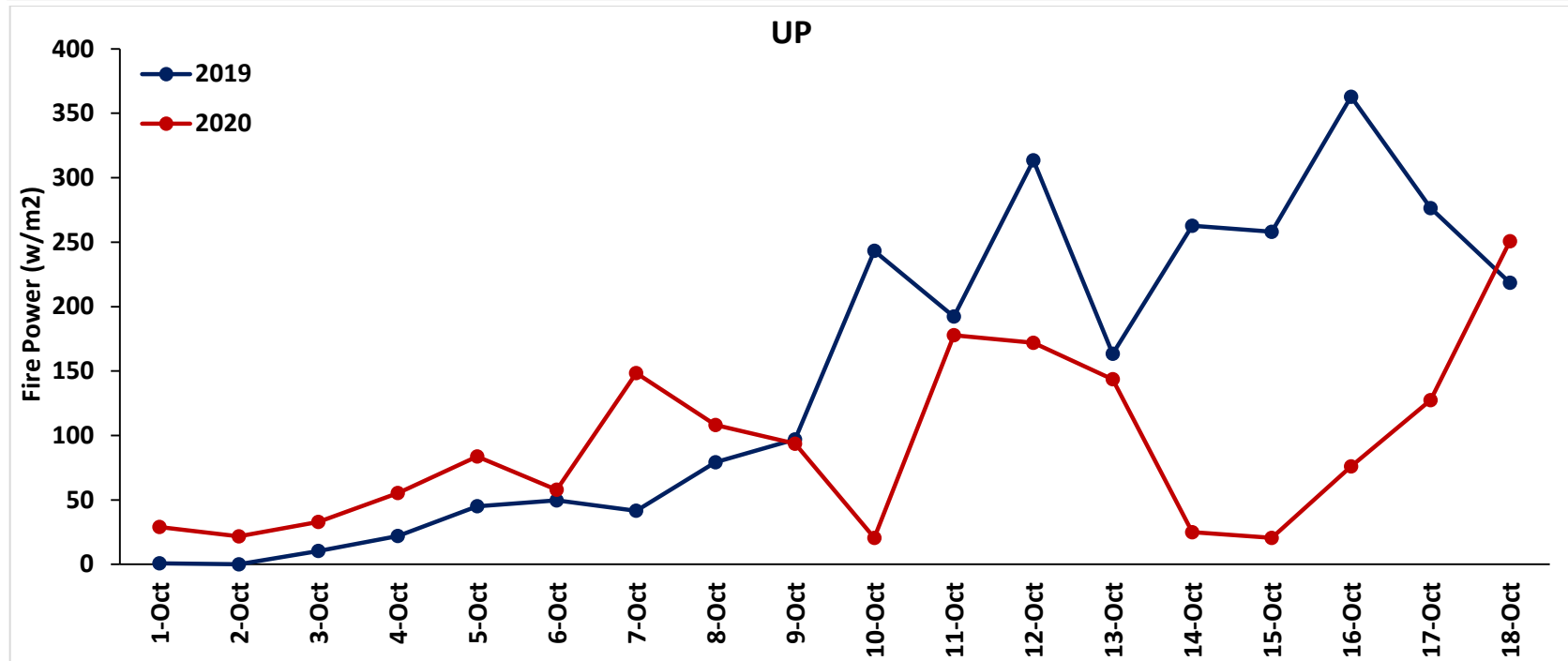
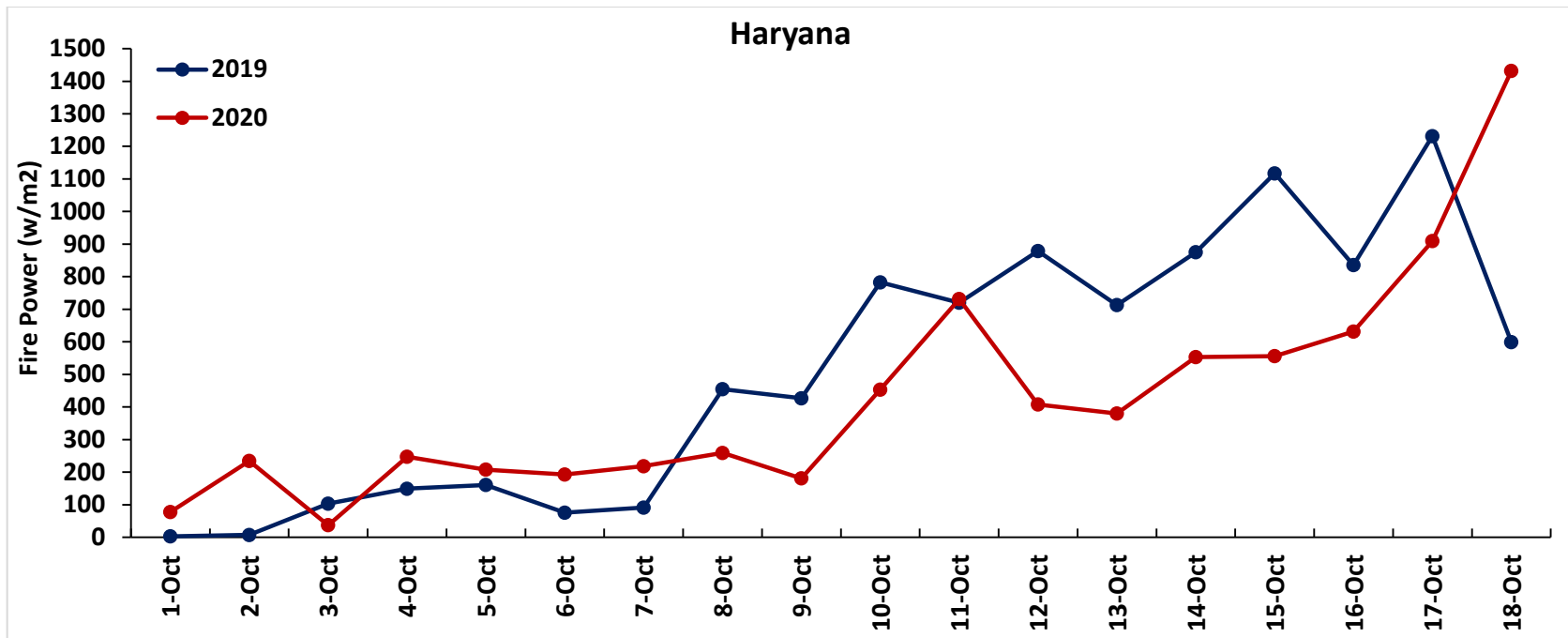




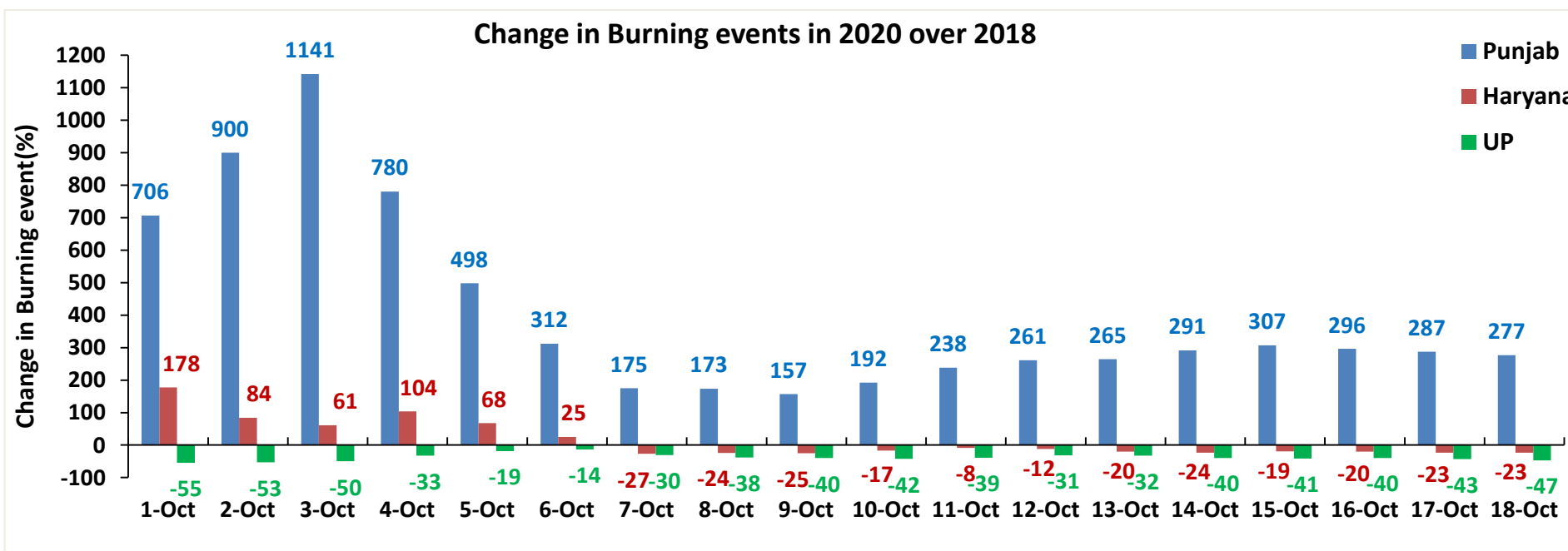
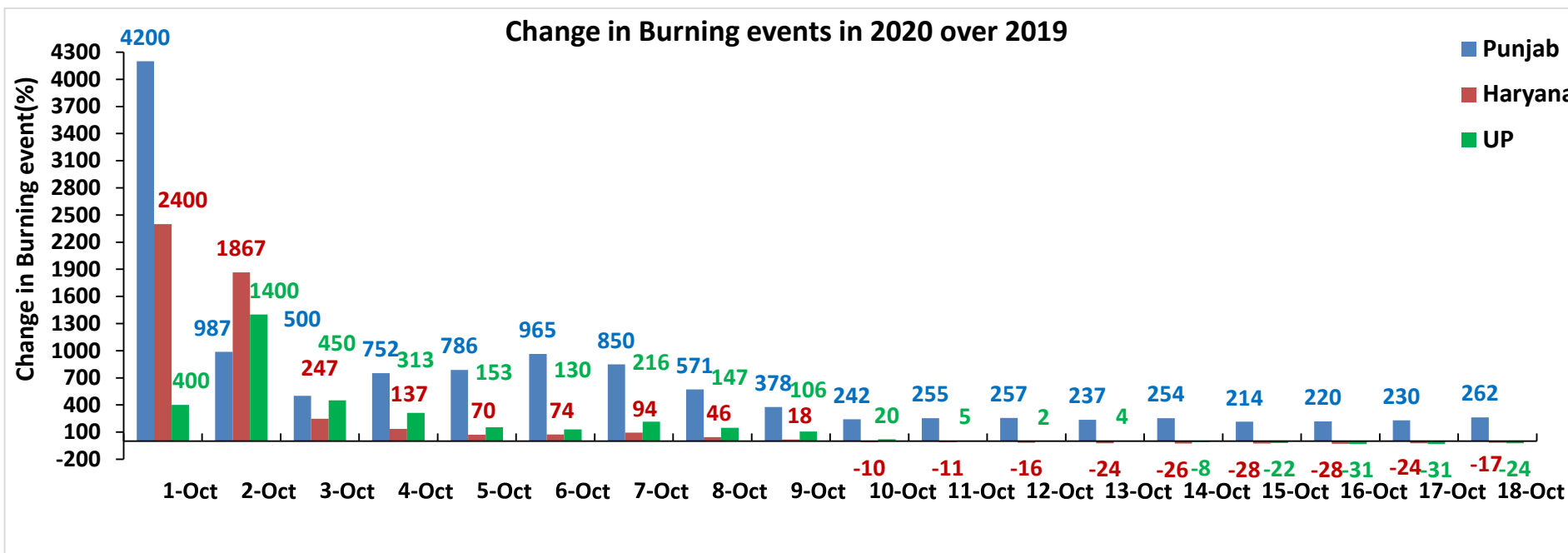
Comparison of Fire Intensity of residue burning events in current year (2020) with previous years (2019, 2018, 2017 & 2016)
For the three study States

(01-Oct to 18-Oct)

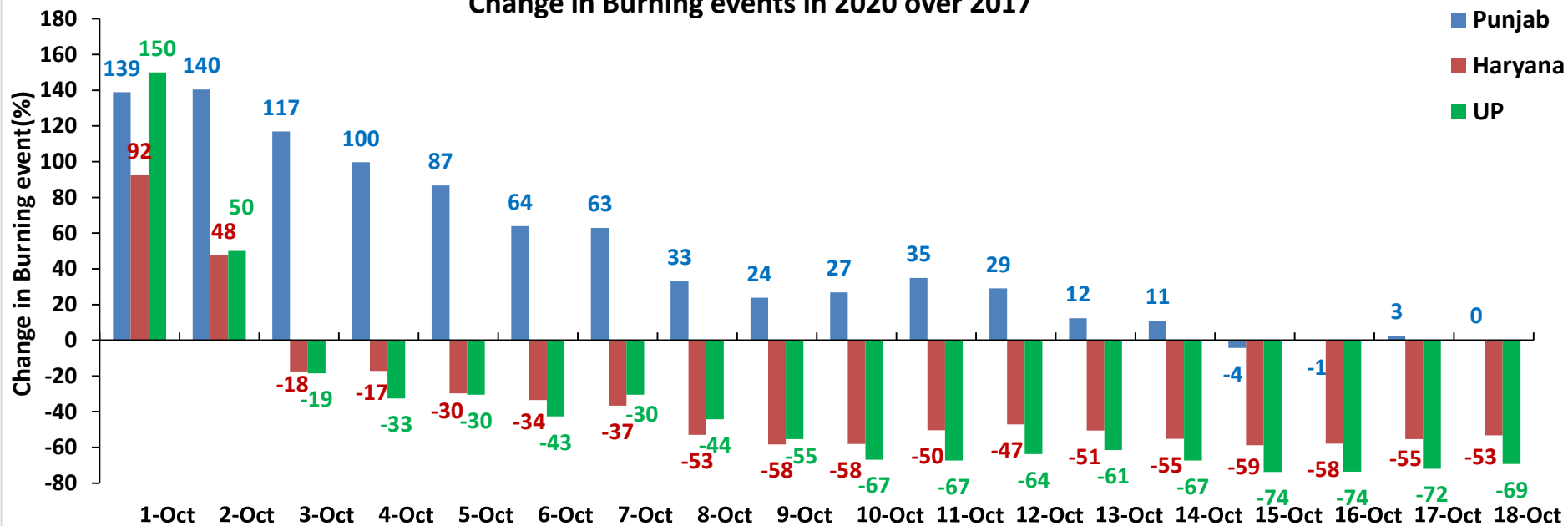




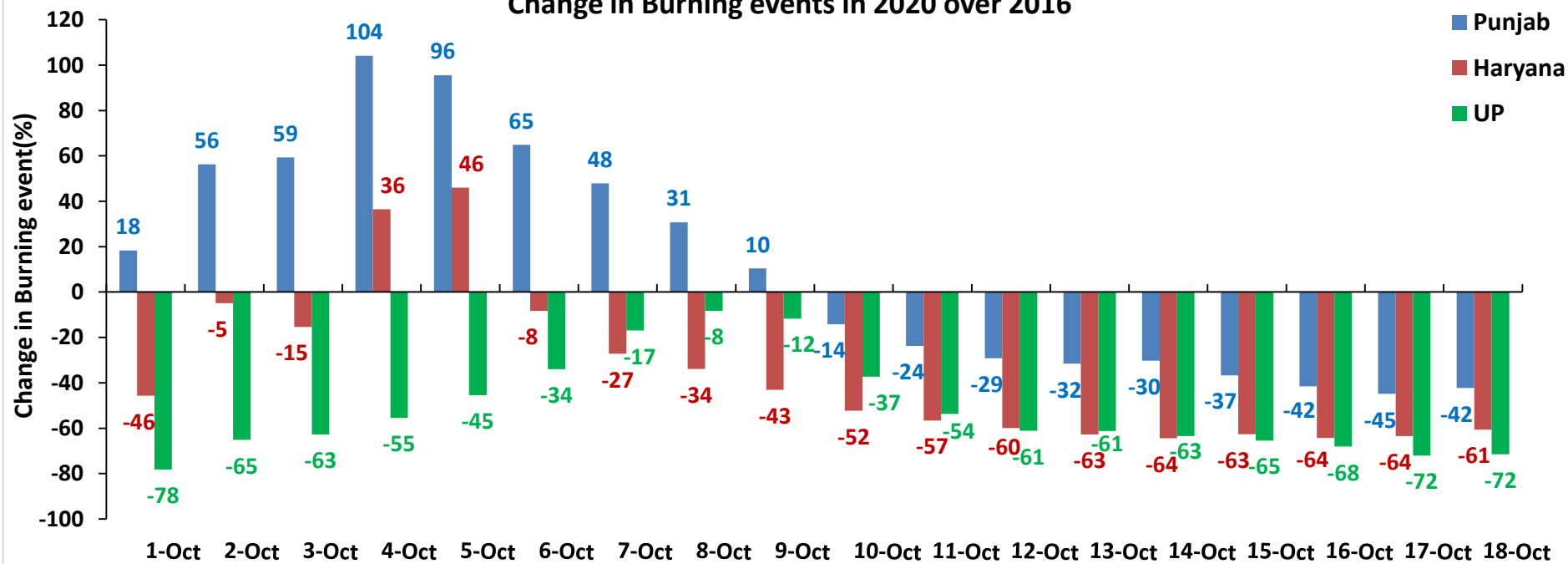
Percent Change in Burning events in 2020 over 2019, 2018, 2017 and 2016 (Daily Cumulative)



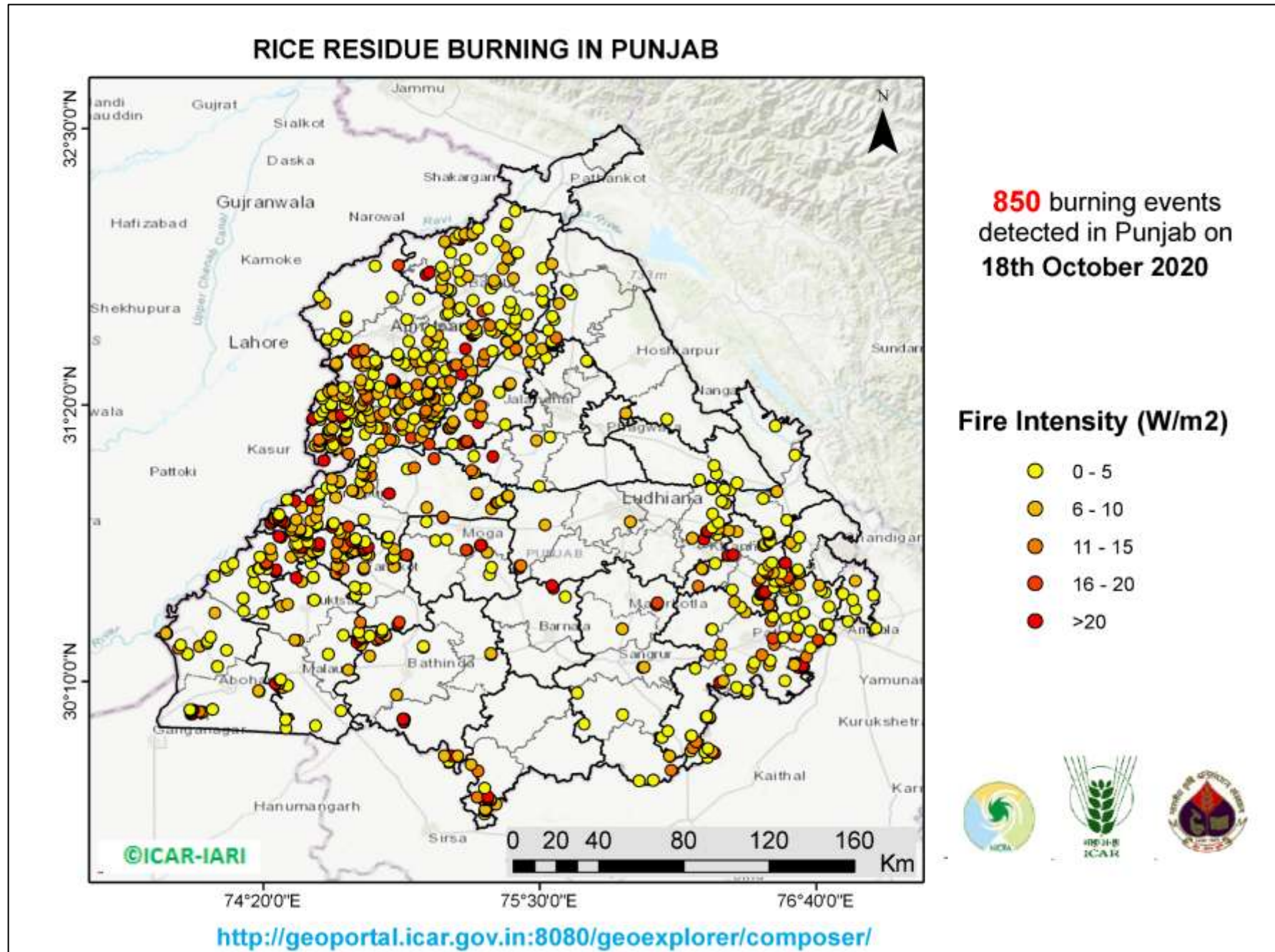
Change in Burning events in 2020 over 2017



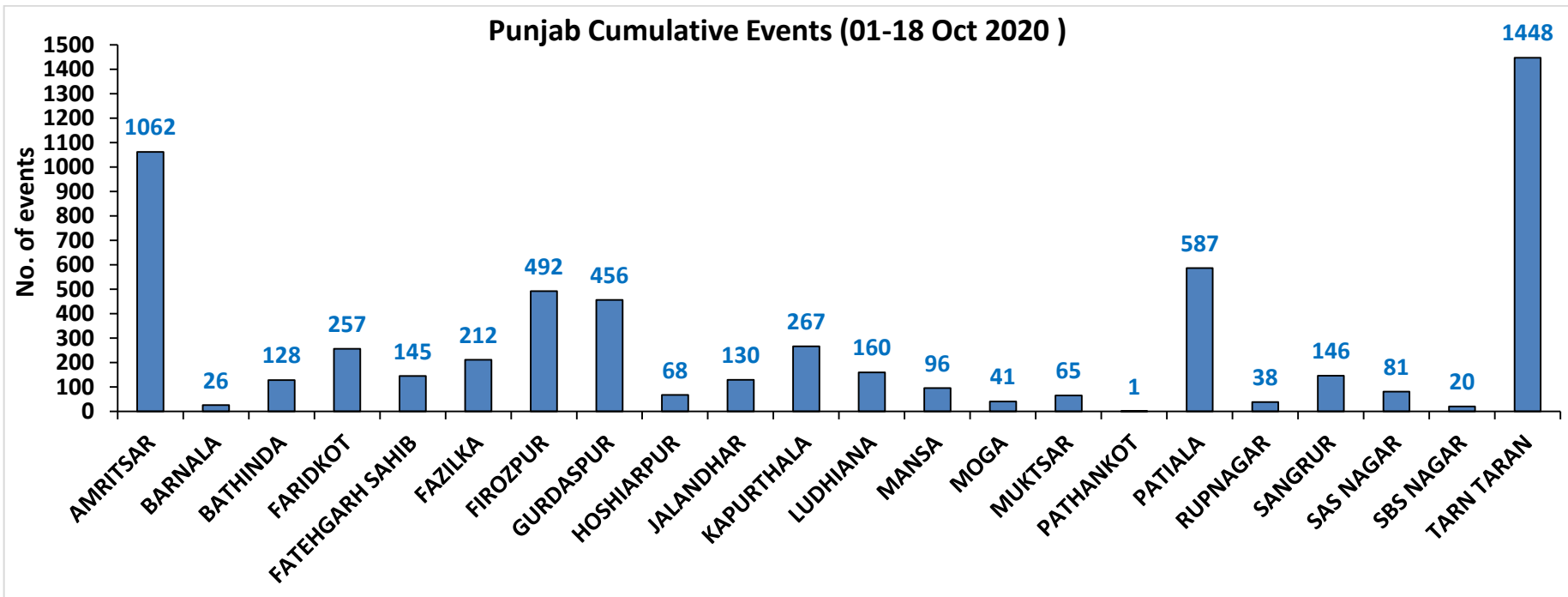
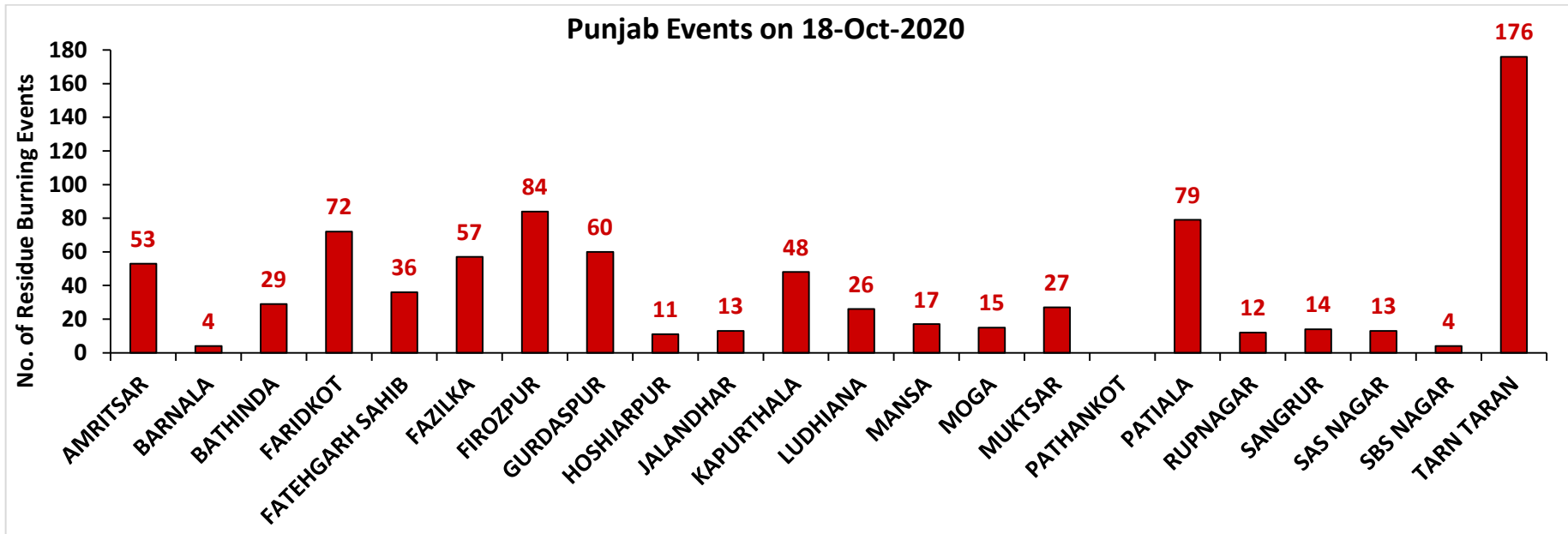
Change in Burning events in 2020 over 2016



(a) Punjab

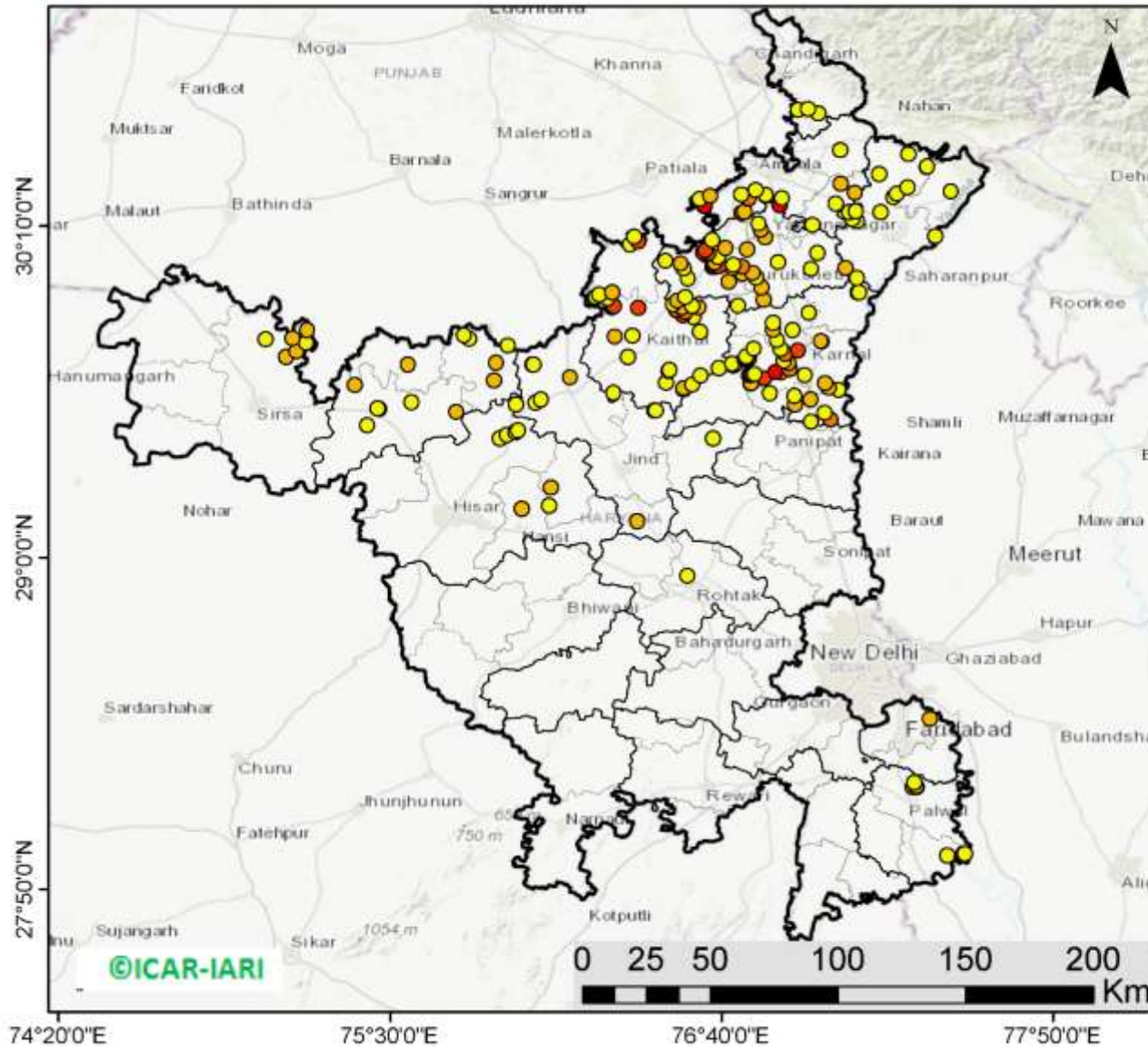


District-wise number of residue burning events in Punjab (01-18 Oct 2020)



(b) Haryana

RICE RESIDUE BURNING IN HARYANA



197 burning events detected in Haryana on 18th October 2020

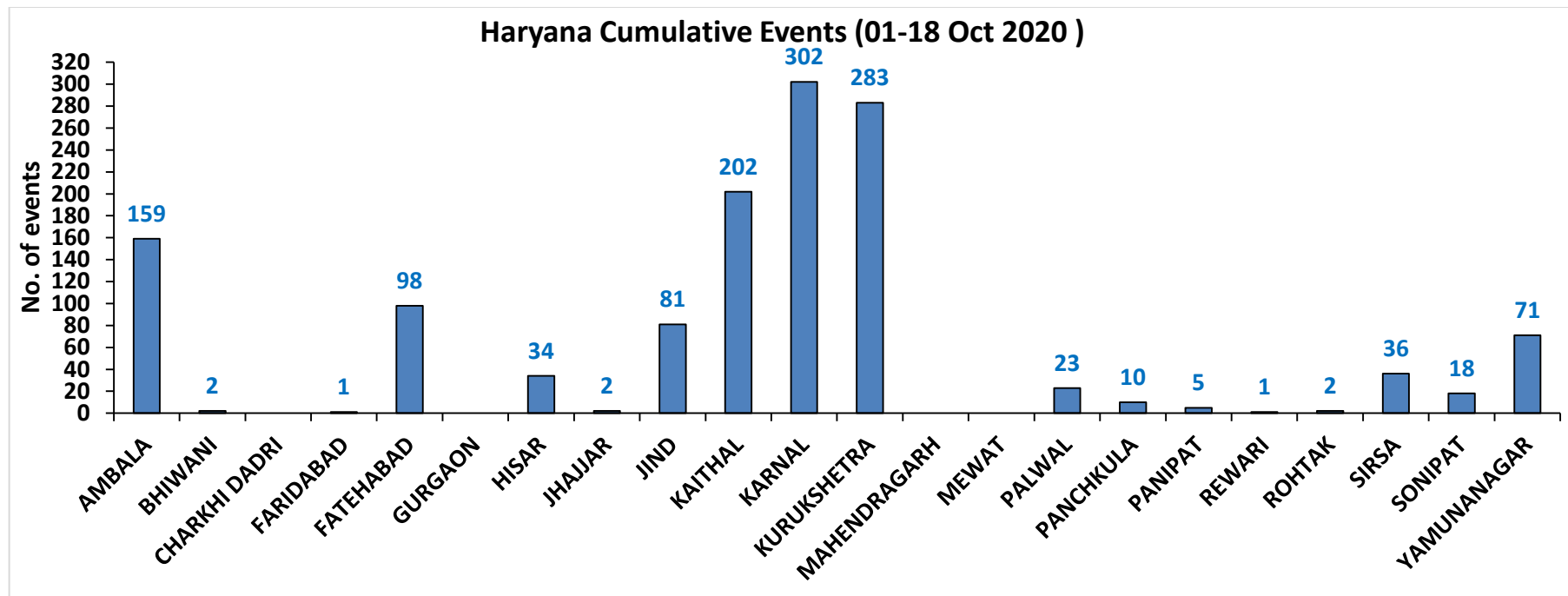
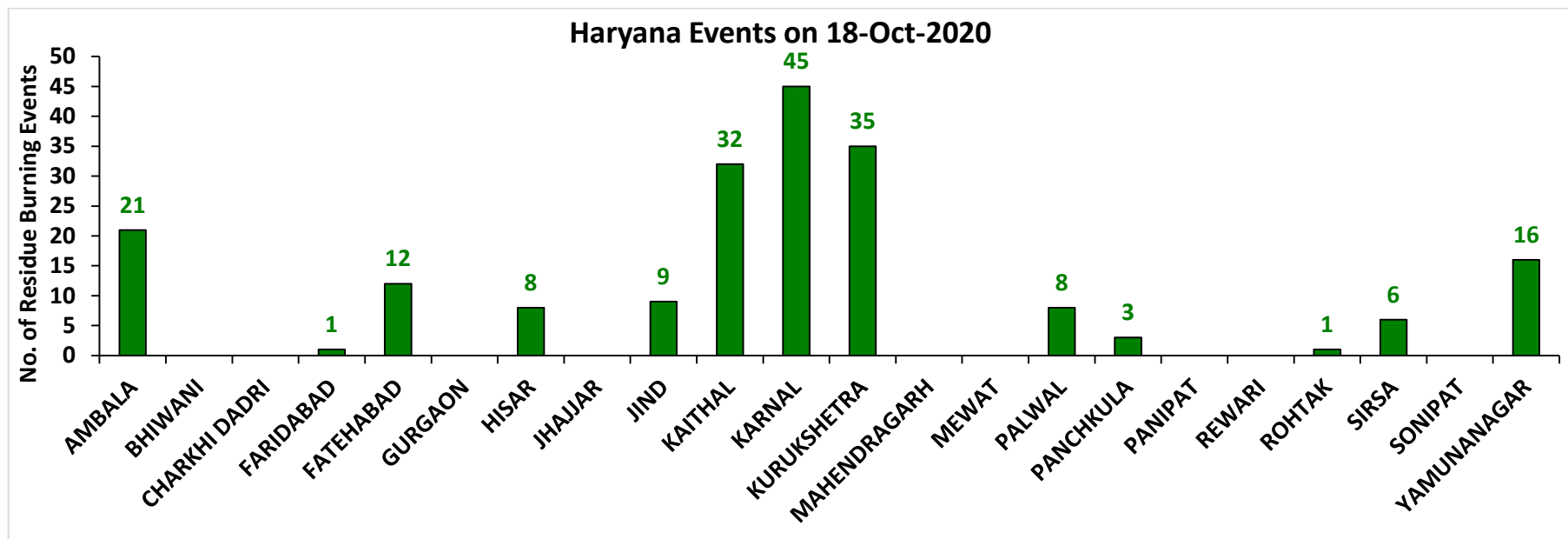
Fire Intensity (W/m²)

- 0 - 5
- 6 - 10
- 11 - 15
- 16 - 20
- >20



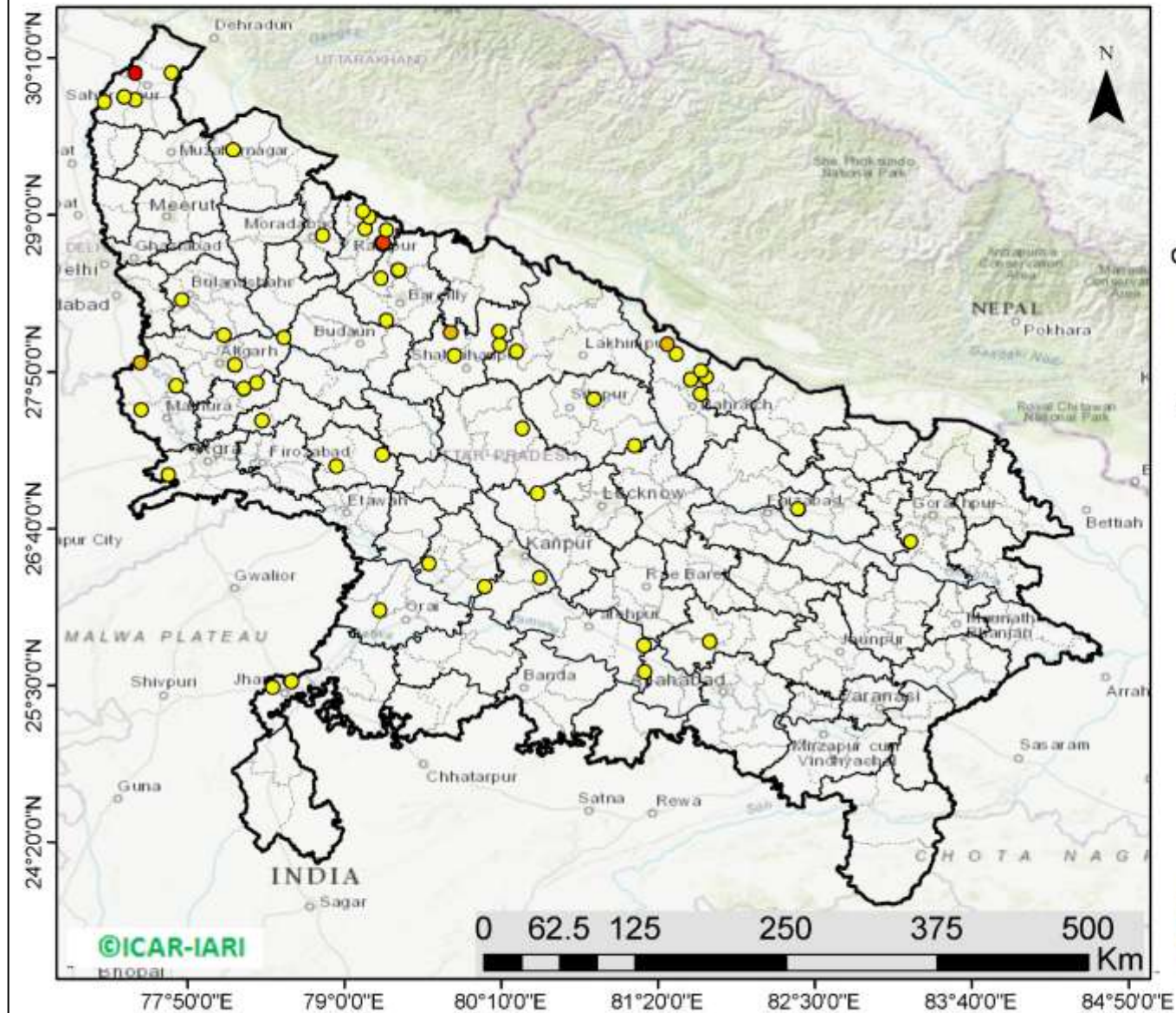
<http://geoportal.icar.gov.in:8080/geoexplorer/composer/>

District-wise number of residue burning events in Haryana (01-18 Oct 2020)



(c) Uttar Pradesh

RICE RESIDUE BURNING IN UTTAR PRADESH



64 burning events detected in Uttar Pradesh on 18th October 2020

Fire Intensity (W/m²)

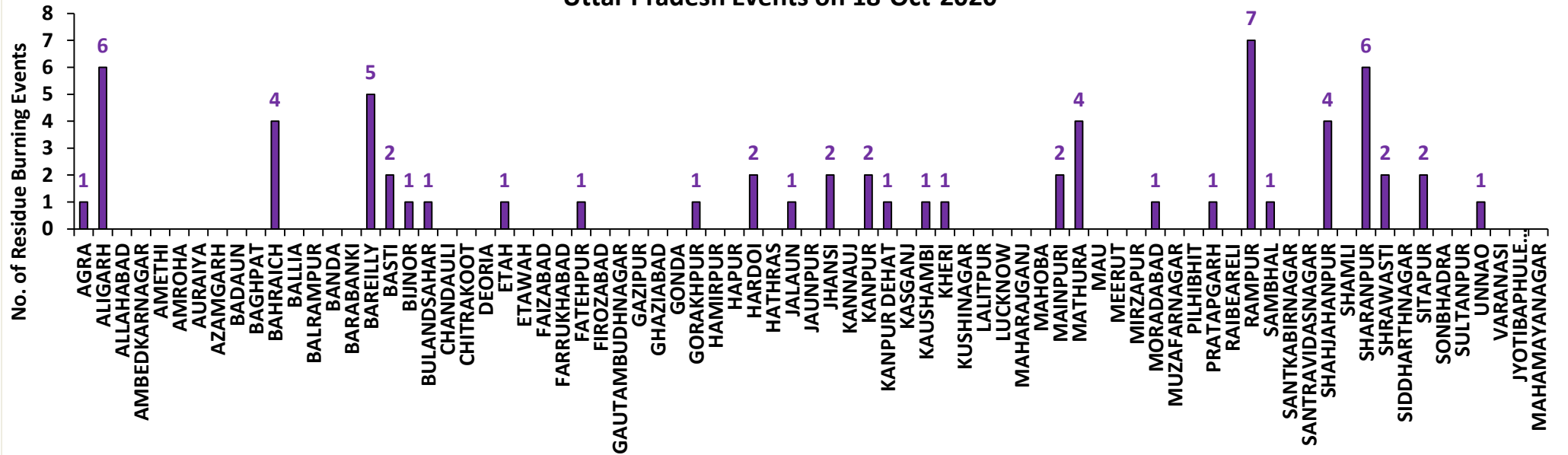
- 0 - 5
- 6 - 10
- 11 - 15
- 16 - 20
- >20



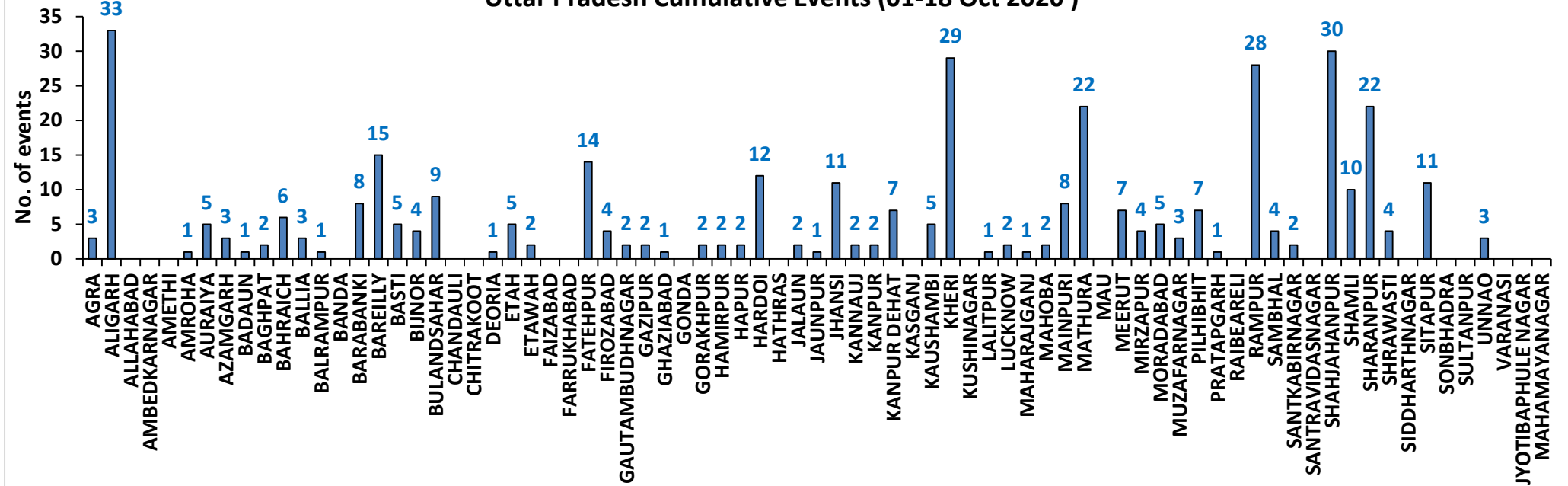
<http://geoportal.icar.gov.in:8080/geoexplorer/composer/>

District-wise number of residue burning events in Uttar Pradesh (01-18 Oct 2020)

Uttar Pradesh Events on 18-Oct-2020



Uttar Pradesh Cumulative Events (01-18 Oct 2020)



State-wise and date-wise number of residue burning events detected in 2016, 2017, 2018, 2019 and 2020
(Period: 01-18 October)

Date	Punjab					Haryana					UP					Total				
	2020	2019	2018	2017	2016	2020	2019	2018	2017	2016	2020	2019	2018	2017	2016	2020	2019	2018	2017	2016
01-Oct	129	3	16	54	109	25	1	9	13	46	5	1	11	2	23	159	5	36	69	178
02-Oct	121	20	9	50	51	34	2	23	27	16	10	0	21	8	20	165	22	53	85	87
03-Oct	110	37	4	62	66	07	16	9	40	16	07	3	12	17	16	124	56	25	119	98
04-Oct	177	3	32	103	37	50	30	16	60	7	11	4	5	22	15	238	37	53	185	59
05-Oct	163	16	56	106	95	30	37	30	68	15	15	11	10	20	14	208	64	96	194	124
06-Oct	141	0	87	138	152	42	22	63	75	105	14	8	13	39	6	197	30	163	252	263
07-Oct	166	27	162	105	171	53	16	180	97	126	36	4	69	33	24	255	47	411	235	321
08-Oct	100	59	39	215	166	40	69	40	218	94	23	18	54	76	14	163	146	133	509	274
09-Oct	126	93	75	163	270	30	70	47	148	121	15	17	32	88	22	171	180	154	399	413
10-Oct	238	172	23	164	597	65	157	37	151	242	07	53	21	126	74	310	382	81	441	913
11-Oct	333	78	30	177	652	112	126	78	87	336	22	38	24	74	128	467	242	132	338	1116
12-Oct	362	99	67	342	694	98	154	133	123	338	37	42	22	51	164	497	295	222	516	1196
13-Oct	247	108	62	470	467	64	159	147	207	284	39	33	61	69	102	350	300	270	746	853
14-Oct	616	141	112	582	812	87	133	153	333	328	08	39	57	137	60	711	313	322	1052	1200
15-Oct	487	262	90	943	1215	129	203	110	458	248	13	63	35	237	76	629	528	235	1638	1539
16-Oct	594	168	174	465	1478	100	148	138	186	385	20	77	20	71	125	714	393	332	722	1988
17-Oct	966	250	272	807	2173	167	152	268	244	399	38	53	94	69	261	1171	455	634	1120	2833
18-Oct	850	100	263	970	1065	197	103	255	306	270	64	39	163	108	204	1111	242	681	1384	1539
Total	5926	1636	1573	5916	10270	1330	1598	1736	2841	3376	384	503	724	1247	1348	7640	3737	4033	10004	14994

District-wise and date wise cumulative number of residue burning events detected in 2016, 2017, 2018, 2019 and 2020
(Period: 01-18 October)

(a) Punjab

Districts	01-18 Oct				
	2016	2017	2018	2019	2020
AMRITSAR	868	575	495	374	1062
BARNALA	30	19	5	6	26
BATHINDA	602	464	41	18	128
FARIDKOT	789	799	58	79	257
FATEHGARH SAHIB	569	216	29	23	145
FAZILKA	0	0	0	55	212
FIROZPUR	1094	774	116	115	492
GURDASPUR	484	160	64	78	456
HOSHIARPUR	98	25	3	10	68
JALANDHAR	648	213	13	68	130
KAPURTHALA	581	79	7	45	267
LUDHIANA	481	366	32	18	160
MANSA	97	112	36	45	96
MOGA	153	85	7	22	41
MUKTSAR	867	306	35	31	65
PATHANKOT	0	0	0	0	1
PATIALA	818	675	209	210	587
RUPNAGAR	117	16	0	1	38
SANGRUR	200	193	77	47	146
SAS NAGAR	58	52	38	23	81
SBS NAGAR	190	71	17	16	20
TARN TARAN	1526	716	291	352	1448
Total	10270	5916	1573	1636	5926

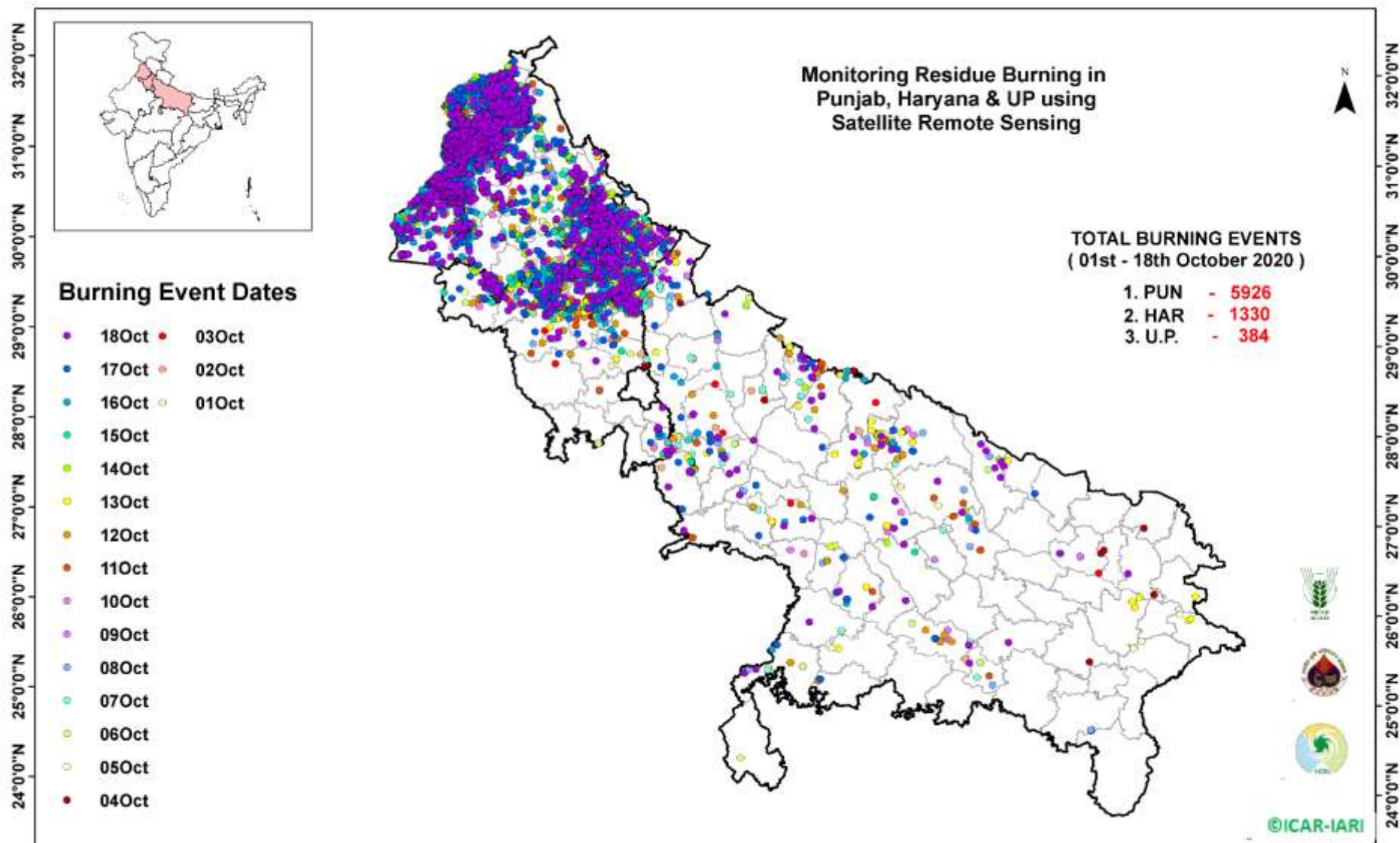
(b) Haryana

Districts	01-18 Oct				
	2016	2017	2018	2019	2020
AMBALA	218	196	55	69	159
BHIWANI	1	2	3	0	2
CHARKHI DADRI	0	0	0	0	0
FARIDABAD	24	52	49	1	1
FATEHABAD	165	160	86	110	98
GURGAON	0	0	0	0	0
HISAR	27	23	13	17	34
JHAJJAR	4	1	5	2	2
JIND	101	116	73	68	81
KAITHAL	901	622	481	414	202
KARNAL	1044	854	492	441	302
KURUKSHETRA	681	624	372	347	283
MAHENDRAGARH	0	0	0	1	0
MEWAT	0	0	0	0	0
PALWAL	0	0	0	38	23
PANCHKULA	0	0	3	13	10
PANIPAT	27	33	33	6	5
REWARI	0	0	0	1	1
ROHTAK	3	1	0	0	2
SIRSA	99	44	19	15	36
SONIPAT	8	15	11	1	18
YAMUNANAGAR	73	98	41	54	71
Total	3376	2841	1736	1598	1330

(C)
Uttar Pradesh

Districts	01-18 Oct																
	2016	2017	2018	2019	2020	GAUTAMBUDHNAGAR	3	0	1	1	2	MUZAFARNAGAR	9	8	5	2	3
AGRA	0	0	0	0	3	GAZIPUR	3	4	3	0	2	PILHIBHIT	40	44	16	5	7
ALIGARH	6	14	14	19	33	GHAZIABAD	0	0	0	1	1	PRATAPGARH	261	235	115	133	1
ALLAHABAD	0	0	3	0	0	GONDA	8	5	3	2	0	RAIBEARELI	0	0	2	0	0
AMBEDKARNAGAR	0	1	0	0	0	GORAKHPUR	0	0	0	0	2	RAMPUR	0	0	0	0	28
AMETHI	0	0	0	0	0	HAMIRPUR	0	2	4	0	2	SAMBHAL	265	183	58	85	4
AMROHA	0	0	0	0	1	HAPUR	0	0	1	0	2	SANTKABIRNAGAR	21	23	13	6	2
AURAIYA	45	50	15	1	5	HARDOI	0	0	0	2	12	SANTRAVIDASNAGAR	0	0	0	2	0
AZAMGARH	0	0	0	0	3	HATHRAS	13	11	7	1	0	SHAHJAHANPUR	0	0	0	0	30
BADAUN	0	1	0	0	1	JALAUN	0	0	0	0	2	SHAMLI	352	348	91	70	10
BAGHPAT	0	0	0	2	2	JAUNPUR	0	0	0	0	1	SHARANPUR	0	0	0	9	22
BAHRAICH	0	2	5	0	6	JHANSI	1	0	3	0	11	SHRAWASTI	0	3	1	1	4
BALLIA	0	0	0	1	3	KANNAUJ	0	0	2	2	2	SIDDHARTHANAGAR	1	1	0	0	0
BALRAMPUR	0	0	1	0	1	KANPUR	0	1	2	1	2	SITAPUR	23	10	8	3	11
BANDA	1	0	1	0	0	KANPUR DEHAT	1	3	0	0	7	SONBHADRA	4	1	7	0	0
BARABANKI	35	27	56	5	8	KASGANJ	0	1	0	0	0	SULTANPUR	0	0	0	0	0
BAREILLY	72	44	14	28	15	KAUSHAMBI	0	0	0	0	5	UNNAO	3	3	3	3	3
BASTI	0	0	0	0	5	KHERI	0	4	9	1	29	VARANASI	0	0	0	0	0
BIJNOR	0	0	0	0	4	KUSHINAGAR	118	101	55	50	0	JYOTIBAPHULE NAGAR	1	0	1	0	0
BULANDSAHAR	2	0	1	0	9	LALITPUR	0	1	0	0	1	MAHAMAYANAGAR	0	0	1	0	0
CHANDAULI	3	6	6	4	0	LUCKNOW	0	0	0	0	2	Total	1348	1247	724	503	384
CHITRAKOOT	0	0	0	0	0	MAHARAJGANJ	6	5	0	1	1						
DEORIA	0	0	0	0	1	MAHOBA	3	13	8	1	2						
ETAH	0	0	0	0	5	MAINPURI	0	0	0	0	8						
ETAWAH	0	7	11	0	2	MATHURA	0	6	4	3	22						
FAIZABAD	3	8	1	0	0	MAU	25	55	159	49	0						
FARRUKHABAD	1	1	0	0	0	MEERUT	1	0	0	0	7						
FATEHPUR	0	0	0	1	14	MIRZAPUR	13	9	0	4	4						
FIROZABAD	5	4	10	1	4	MORADABAD	0	2	4	3	5						

Map of Cumulative Burning Events (01-18 Oct 2020)



[\(http://geoportal.icar.gov.in:8080/geoexplorer/composer/\)](http://geoportal.icar.gov.in:8080/geoexplorer/composer/)

Details of residue burning events in Punjab on 18-Oct-2020

S. No.	District	Tehsil / Block	Satellite	Longitude	Latitude	Time (IST)	Day / Night	Fire Power (W/m²)
1	AMRITSAR	AJNALA	S-NPP	74.68507	31.61893	13:12:00	D	3.40
2	AMRITSAR	AJNALA	S-NPP	74.64382	31.63145	13:12:00	D	3.20
3	AMRITSAR	AJNALA	S-NPP	74.68272	31.68767	13:12:00	D	5.60
4	AMRITSAR	AJNALA	S-NPP	74.68533	31.70030	13:12:00	D	4.60
5	AMRITSAR	AJNALA	S-NPP	74.68431	31.70414	13:12:00	D	4.60
6	AMRITSAR	AJNALA	S-NPP	74.59538	31.76342	13:12:00	D	8.30
7	AMRITSAR	AJNALA	S-NPP	74.87885	31.78683	13:12:00	D	4.10
8	AMRITSAR	AJNALA	S-NPP	74.56997	31.79090	13:12:00	D	4.30
9	AMRITSAR	AJNALA	S-NPP	74.80687	31.91835	13:12:00	D	2.70
10	AMRITSAR	AMRITSAR I	S-NPP	75.02625	31.53541	13:12:00	D	2.80
11	AMRITSAR	AMRITSAR I	S-NPP	75.02525	31.53919	13:12:00	D	4.50
12	AMRITSAR	AMRITSAR I	S-NPP	74.97079	31.54866	13:12:00	D	3.00
13	AMRITSAR	AMRITSAR I	S-NPP	75.04719	31.58707	13:12:00	D	4.40
14	AMRITSAR	AMRITSAR I	S-NPP	75.08636	31.59053	13:12:00	D	2.20
15	AMRITSAR	AMRITSAR I	S-NPP	75.05427	31.59436	13:12:00	D	4.40
16	AMRITSAR	AMRITSAR I	S-NPP	75.02948	31.60144	13:12:00	D	5.10
17	AMRITSAR	AMRITSAR I	S-NPP	75.04145	31.64346	13:12:00	D	4.00
18	AMRITSAR	AMRITSAR I	S-NPP	74.99020	31.78078	13:12:00	D	3.70
19	AMRITSAR	AMRITSAR II	S-NPP	74.90233	31.54355	13:12:00	D	10.60
20	AMRITSAR	AMRITSAR II	S-NPP	74.89975	31.54410	13:12:00	D	16.60
21	AMRITSAR	AMRITSAR II	S-NPP	74.90132	31.54736	13:12:00	D	4.80
22	AMRITSAR	AMRITSAR II	AQUA	74.71800	31.55200	13:10:00	D	36.20
23	AMRITSAR	AMRITSAR II	S-NPP	74.75903	31.56465	13:12:00	D	12.80
24	AMRITSAR	AMRITSAR II	S-NPP	74.94865	31.60166	13:12:00	D	3.20
25	AMRITSAR	AMRITSAR II	S-NPP	74.62714	31.60378	13:12:00	D	3.10
26	AMRITSAR	AMRITSAR II	S-NPP	74.60121	31.61081	13:12:00	D	6.10
27	AMRITSAR	AMRITSAR II	S-NPP	74.60306	31.61122	13:12:00	D	4.00
28	AMRITSAR	AMRITSAR II	S-NPP	74.67938	31.61783	13:12:00	D	3.40
29	AMRITSAR	AMRITSAR II	S-NPP	74.93964	31.69363	13:12:00	D	2.00
30	AMRITSAR	BABA BAKALA	S-NPP	75.19646	31.51675	13:12:00	D	6.20

31	AMRITSAR	BABA BAKALA	TERRA	75.26300	31.52000	11:35:00	D	11.00
32	AMRITSAR	BABA BAKALA	S-NPP	75.08283	31.53835	13:12:00	D	3.30
33	AMRITSAR	BABA BAKALA	S-NPP	75.26759	31.54622	13:12:00	D	12.30
34	AMRITSAR	BABA BAKALA	S-NPP	75.30294	31.56084	13:12:00	D	3.50
35	AMRITSAR	BABA BAKALA	S-NPP	75.18819	31.57037	13:12:00	D	34.40
36	AMRITSAR	BABA BAKALA	S-NPP	75.35978	31.59904	13:12:00	D	5.30
37	AMRITSAR	BABA BAKALA	S-NPP	75.36505	31.60004	13:12:00	D	5.30
38	AMRITSAR	BABA BAKALA	S-NPP	75.06372	31.62396	13:12:00	D	5.90
39	AMRITSAR	BABA BAKALA	S-NPP	75.06916	31.62501	13:12:00	D	5.90
40	AMRITSAR	BABA BAKALA	S-NPP	75.21629	31.62582	13:12:00	D	5.70
41	AMRITSAR	BABA BAKALA	AQUA	75.22100	31.63200	13:10:00	D	45.00
42	AMRITSAR	BABA BAKALA	S-NPP	75.22504	31.63538	13:12:00	D	39.80
43	AMRITSAR	BABA BAKALA	S-NPP	75.31309	31.64059	13:12:00	D	9.50
44	AMRITSAR	BABA BAKALA	S-NPP	75.23477	31.64119	13:12:00	D	2.50
45	AMRITSAR	BABA BAKALA	S-NPP	75.29430	31.64872	13:12:00	D	4.70
46	AMRITSAR	BABA BAKALA	S-NPP	75.23186	31.65241	13:12:00	D	2.20
47	AMRITSAR	BABA BAKALA	S-NPP	75.19244	31.65270	13:12:00	D	1.90
48	AMRITSAR	BABA BAKALA	S-NPP	75.28947	31.66737	13:12:00	D	13.40
49	AMRITSAR	BABA BAKALA	S-NPP	75.21631	31.66907	13:12:00	D	12.20
50	AMRITSAR	BABA BAKALA	S-NPP	75.10624	31.71416	13:12:00	D	2.10
51	AMRITSAR	BABA BAKALA	S-NPP	75.11606	31.72002	13:12:00	D	3.80
52	AMRITSAR	BABA BAKALA	S-NPP	75.15814	31.73211	13:12:00	D	3.20
53	AMRITSAR	BABA BAKALA	S-NPP	75.16694	31.74168	13:12:00	D	3.20
54	BARNALA	BARNALA	S-NPP	75.60873	30.52238	13:12:00	D	4.20
55	BARNALA	BARNALA	AQUA	75.55900	30.55900	13:10:00	D	46.50
56	BARNALA	BARNALA	AQUA	75.55000	30.56700	13:10:00	D	97.30
57	BARNALA	BARNALA	S-NPP	75.55215	30.57059	13:12:00	D	44.40
58	BATHINDA	BATHINDA	TERRA	74.89700	30.11000	11:35:00	D	8.50
59	BATHINDA	BATHINDA	S-NPP	74.78384	30.27296	13:12:00	D	7.00
60	BATHINDA	BATHINDA	S-NPP	75.01051	30.30920	13:12:00	D	3.70
61	BATHINDA	BATHINDA	S-NPP	75.00951	30.31308	13:12:00	D	3.70
62	BATHINDA	BATHINDA	S-NPP	74.74564	30.31748	13:12:00	D	5.90
63	BATHINDA	BATHINDA	S-NPP	74.74715	30.31940	13:12:00	D	5.40

64	BATHINDA	BATHINDA	S-NPP	74.81519	30.34078	13:12:00	D	5.70
65	BATHINDA	BATHINDA	S-NPP	74.81251	30.34320	13:12:00	D	12.60
66	BATHINDA	BATHINDA	TERRA	74.82800	30.34700	11:35:00	D	17.80
67	BATHINDA	BATHINDA	S-NPP	74.74918	30.35121	13:12:00	D	5.20
68	BATHINDA	BATHINDA	S-NPP	74.85101	30.35906	13:12:00	D	5.30
69	BATHINDA	BATHINDA	S-NPP	74.84999	30.36296	13:12:00	D	6.10
70	BATHINDA	BATHINDA	S-NPP	74.83541	30.37239	13:12:00	D	4.20
71	BATHINDA	BATHINDA	S-NPP	74.83440	30.37629	13:12:00	D	4.10
72	BATHINDA	BATHINDA	S-NPP	74.83817	30.38523	13:12:00	D	4.00
73	BATHINDA	RAMPURA PHUL	S-NPP	75.29554	30.27931	13:12:00	D	9.40
74	BATHINDA	RAMPURA PHUL	S-NPP	75.29458	30.28313	13:12:00	D	9.40
75	BATHINDA	TALWANDI SABO	S-NPP	75.11996	29.82452	13:12:00	D	4.10
76	BATHINDA	TALWANDI SABO	S-NPP	75.11897	29.82841	13:12:00	D	4.10
77	BATHINDA	TALWANDI SABO	S-NPP	75.15578	29.84768	13:12:00	D	8.80
78	BATHINDA	TALWANDI SABO	S-NPP	75.13010	29.84995	13:12:00	D	10.00
79	BATHINDA	TALWANDI SABO	S-NPP	75.15373	29.85055	13:12:00	D	10.80
80	BATHINDA	TALWANDI SABO	AQUA	75.13000	29.85100	13:10:00	D	21.60
81	BATHINDA	TALWANDI SABO	S-NPP	75.15479	29.85156	13:12:00	D	8.80
82	BATHINDA	TALWANDI SABO	S-NPP	75.09969	29.85211	13:12:00	D	7.60
83	BATHINDA	TALWANDI SABO	S-NPP	75.13010	29.85497	13:12:00	D	77.10
84	BATHINDA	TALWANDI SABO	AQUA	74.92800	29.99400	13:10:00	D	33.30
85	BATHINDA	TALWANDI SABO	S-NPP	74.93143	30.00655	13:12:00	D	22.70
86	BATHINDA	TALWANDI SABO	AQUA	74.92400	30.00800	13:10:00	D	26.80
87	FARIDKOT	FARIDKOT	S-NPP	74.72350	30.52791	13:12:00	D	3.80
88	FARIDKOT	FARIDKOT	S-NPP	74.72491	30.52974	13:12:00	D	4.90
89	FARIDKOT	FARIDKOT	S-NPP	74.73484	30.55488	13:12:00	D	6.70
90	FARIDKOT	FARIDKOT	S-NPP	74.76490	30.55675	13:12:00	D	3.80
91	FARIDKOT	FARIDKOT	S-NPP	74.72014	30.56430	13:12:00	D	3.80
92	FARIDKOT	FARIDKOT	S-NPP	74.64169	30.62064	13:12:00	D	9.10
93	FARIDKOT	FARIDKOT	S-NPP	74.64304	30.62334	13:12:00	D	12.50
94	FARIDKOT	FARIDKOT	AQUA	74.66600	30.63600	13:10:00	D	54.60
95	FARIDKOT	FARIDKOT	AQUA	74.66100	30.63800	13:10:00	D	49.20
96	FARIDKOT	FARIDKOT	TERRA	74.75800	30.63900	11:35:00	D	10.50

97	FARIDKOT	FARIDKOT	S-NPP	74.67273	30.64337	13:12:00	D	12.10
98	FARIDKOT	FARIDKOT	S-NPP	74.75827	30.64403	13:12:00	D	6.00
99	FARIDKOT	FARIDKOT	S-NPP	74.75988	30.64601	13:12:00	D	5.50
100	FARIDKOT	FARIDKOT	S-NPP	74.88585	30.64999	13:12:00	D	8.20
101	FARIDKOT	FARIDKOT	S-NPP	74.64520	30.65438	13:12:00	D	6.30
102	FARIDKOT	FARIDKOT	S-NPP	74.53755	30.66611	13:12:00	D	3.10
103	FARIDKOT	FARIDKOT	S-NPP	74.87487	30.68358	13:12:00	D	9.90
104	FARIDKOT	FARIDKOT	S-NPP	74.64871	30.68807	13:12:00	D	4.30
105	FARIDKOT	FARIDKOT	S-NPP	74.88527	30.68971	13:12:00	D	4.00
106	FARIDKOT	FARIDKOT	S-NPP	74.64768	30.69199	13:12:00	D	11.40
107	FARIDKOT	FARIDKOT	S-NPP	74.52525	30.69688	13:12:00	D	1.90
108	FARIDKOT	FARIDKOT	S-NPP	74.78072	30.69765	13:12:00	D	5.50
109	FARIDKOT	FARIDKOT	S-NPP	74.67694	30.69775	13:12:00	D	2.50
110	FARIDKOT	FARIDKOT	S-NPP	74.76714	30.70317	13:12:00	D	4.30
111	FARIDKOT	FARIDKOT	S-NPP	74.54797	30.70548	13:12:00	D	11.00
112	FARIDKOT	FARIDKOT	S-NPP	74.70507	30.70738	13:12:00	D	4.90
113	FARIDKOT	FARIDKOT	S-NPP	74.64355	30.70767	13:12:00	D	5.60
114	FARIDKOT	FARIDKOT	S-NPP	74.54971	30.70769	13:12:00	D	10.10
115	FARIDKOT	FARIDKOT	S-NPP	74.54693	30.70942	13:12:00	D	11.00
116	FARIDKOT	FARIDKOT	S-NPP	74.48916	30.71208	13:12:00	D	5.30
117	FARIDKOT	FARIDKOT	S-NPP	74.70986	30.71242	13:12:00	D	7.90
118	FARIDKOT	FARIDKOT	S-NPP	74.54193	30.71259	13:12:00	D	9.50
119	FARIDKOT	FARIDKOT	TERRA	74.72700	30.71600	11:35:00	D	18.50
120	FARIDKOT	FARIDKOT	AQUA	74.48200	30.71900	13:10:00	D	88.50
121	FARIDKOT	FARIDKOT	TERRA	74.72100	30.71900	11:35:00	D	8.70
122	FARIDKOT	FARIDKOT	AQUA	74.75700	30.71900	13:10:00	D	33.50
123	FARIDKOT	FARIDKOT	S-NPP	74.56538	30.71914	13:12:00	D	2.50
124	FARIDKOT	FARIDKOT	AQUA	74.47400	30.72100	13:10:00	D	56.90
125	FARIDKOT	FARIDKOT	S-NPP	74.88863	30.72291	13:12:00	D	5.90
126	FARIDKOT	FARIDKOT	S-NPP	74.76104	30.72653	13:12:00	D	37.40
127	FARIDKOT	FARIDKOT	S-NPP	74.68142	30.72741	13:12:00	D	4.70
128	FARIDKOT	FARIDKOT	AQUA	74.50400	30.72800	13:10:00	D	61.90
129	FARIDKOT	FARIDKOT	S-NPP	74.49691	30.73027	13:12:00	D	22.80

130	FARIDKOT	FARIDKOT	TERRA	74.47500	30.73100	11:35:00	D	12.40
131	FARIDKOT	FARIDKOT	S-NPP	74.77734	30.73380	13:12:00	D	35.80
132	FARIDKOT	FARIDKOT	TERRA	74.68900	30.73400	11:35:00	D	6.80
133	FARIDKOT	FARIDKOT	S-NPP	74.49587	30.73422	13:12:00	D	22.80
134	FARIDKOT	FARIDKOT	TERRA	74.67500	30.73600	11:35:00	D	12.30
135	FARIDKOT	FARIDKOT	AQUA	74.56900	30.73800	13:10:00	D	39.10
136	FARIDKOT	FARIDKOT	AQUA	74.56200	30.74000	13:10:00	D	43.10
137	FARIDKOT	FARIDKOT	S-NPP	74.47286	30.74209	13:12:00	D	8.20
138	FARIDKOT	FARIDKOT	S-NPP	74.47977	30.74763	13:12:00	D	3.20
139	FARIDKOT	FARIDKOT	S-NPP	74.56995	30.74903	13:12:00	D	33.00
140	FARIDKOT	FARIDKOT	S-NPP	74.52943	30.74923	13:12:00	D	5.60
141	FARIDKOT	FARIDKOT	S-NPP	74.74741	30.75155	13:12:00	D	4.50
142	FARIDKOT	FARIDKOT	S-NPP	74.72389	30.75208	13:12:00	D	1.90
143	FARIDKOT	FARIDKOT	S-NPP	74.64937	30.75250	13:12:00	D	10.40
144	FARIDKOT	FARIDKOT	AQUA	74.71600	30.75500	13:10:00	D	32.30
145	FARIDKOT	FARIDKOT	S-NPP	74.76546	30.75602	13:12:00	D	2.70
146	FARIDKOT	FARIDKOT	S-NPP	74.52339	30.75632	13:12:00	D	4.50
147	FARIDKOT	FARIDKOT	S-NPP	74.64834	30.75641	13:12:00	D	10.40
148	FARIDKOT	FARIDKOT	AQUA	74.70800	30.75800	13:10:00	D	23.00
149	FARIDKOT	FARIDKOT	S-NPP	74.72601	30.76367	13:12:00	D	18.90
150	FARIDKOT	FARIDKOT	S-NPP	74.72499	30.76757	13:12:00	D	4.80
151	FARIDKOT	FARIDKOT	S-NPP	74.67616	30.79073	13:12:00	D	5.90
152	FARIDKOT	FARIDKOT	TERRA	74.66000	30.79100	11:35:00	D	9.00
153	FARIDKOT	FARIDKOT	S-NPP	74.65353	30.80682	13:12:00	D	2.10
154	FARIDKOT	FARIDKOT	AQUA	74.62500	30.81700	13:10:00	D	21.30
155	FARIDKOT	FARIDKOT	S-NPP	74.69325	30.81872	13:12:00	D	16.10
156	FARIDKOT	FARIDKOT	S-NPP	74.62877	30.83077	13:12:00	D	11.30
157	FARIDKOT	JAITO	AQUA	74.90300	30.40700	13:10:00	D	25.90
158	FARIDKOT	JAITO	S-NPP	74.90898	30.41547	13:12:00	D	17.90
159	FATEHGARH SAHIB	ALMOH	S-NPP	76.31255	30.55239	13:12:00	D	3.30
160	FATEHGARH SAHIB	ALMOH	S-NPP	76.16913	30.56781	13:12:00	D	14.40
161	FATEHGARH SAHIB	ALMOH	TERRA	76.19100	30.64000	11:35:00	D	18.20
162	FATEHGARH SAHIB	ALMOH	TERRA	76.18500	30.64100	11:35:00	D	8.60

163	FATEHGARH SAHIB	ALMOH	S-NPP	76.24117	30.66392	13:12:00	D	3.90
164	FATEHGARH SAHIB	BASSI PATHANAN	S-NPP	76.46742	30.65654	13:12:00	D	6.70
165	FATEHGARH SAHIB	BASSI PATHANAN	S-NPP	76.48018	30.66639	13:12:00	D	3.30
166	FATEHGARH SAHIB	BASSI PATHANAN	AQUA	76.44400	30.73900	13:10:00	D	16.40
167	FATEHGARH SAHIB	BASSI PATHANAN	AQUA	76.45900	30.74400	13:10:00	D	25.60
168	FATEHGARH SAHIB	BASSI PATHANAN	S-NPP	76.46098	30.74538	13:12:00	D	7.50
169	FATEHGARH SAHIB	BASSI PATHANAN	S-NPP	76.45212	30.74767	13:12:00	D	4.30
170	FATEHGARH SAHIB	FATEHGARH SAHIB	S-NPP	76.34780	30.48010	13:12:00	D	3.70
171	FATEHGARH SAHIB	FATEHGARH SAHIB	S-NPP	76.46442	30.48254	13:12:00	D	8.20
172	FATEHGARH SAHIB	FATEHGARH SAHIB	S-NPP	76.46753	30.49062	13:12:00	D	13.80
173	FATEHGARH SAHIB	FATEHGARH SAHIB	S-NPP	76.42164	30.51241	13:12:00	D	4.90
174	FATEHGARH SAHIB	FATEHGARH SAHIB	S-NPP	76.43187	30.53308	13:12:00	D	7.50
175	FATEHGARH SAHIB	FATEHGARH SAHIB	S-NPP	76.43367	30.53700	13:12:00	D	7.40
176	FATEHGARH SAHIB	FATEHGARH SAHIB	AQUA	76.43600	30.53900	13:10:00	D	16.00
177	FATEHGARH SAHIB	FATEHGARH SAHIB	AQUA	76.44300	30.53900	13:10:00	D	31.10
178	FATEHGARH SAHIB	FATEHGARH SAHIB	AQUA	76.45700	30.54400	13:10:00	D	23.50
179	FATEHGARH SAHIB	FATEHGARH SAHIB	S-NPP	76.45220	30.54419	13:12:00	D	34.10
180	FATEHGARH SAHIB	FATEHGARH SAHIB	S-NPP	76.48830	30.56212	13:12:00	D	3.90
181	FATEHGARH SAHIB	FATEHGARH SAHIB	TERRA	76.53700	30.56300	11:35:00	D	9.70
182	FATEHGARH SAHIB	FATEHGARH SAHIB	S-NPP	76.52821	30.58444	13:12:00	D	4.00
183	FATEHGARH SAHIB	FATEHGARH SAHIB	S-NPP	76.50721	30.58810	13:12:00	D	1.90
184	FATEHGARH SAHIB	FATEHGARH SAHIB	AQUA	76.42200	30.58900	13:10:00	D	15.80
185	FATEHGARH SAHIB	FATEHGARH SAHIB	S-NPP	76.49187	30.58905	13:12:00	D	4.50
186	FATEHGARH SAHIB	FATEHGARH SAHIB	S-NPP	76.54658	30.59154	13:12:00	D	4.10
187	FATEHGARH SAHIB	FATEHGARH SAHIB	S-NPP	76.43338	30.60093	13:12:00	D	8.50
188	FATEHGARH SAHIB	FATEHGARH SAHIB	S-NPP	76.47437	30.61964	13:12:00	D	5.60
189	FATEHGARH SAHIB	FATEHGARH SAHIB	AQUA	76.45900	30.62300	13:10:00	D	30.40
190	FATEHGARH SAHIB	FATEHGARH SAHIB	S-NPP	76.48801	30.62585	13:12:00	D	6.80
191	FATEHGARH SAHIB	FATEHGARH SAHIB	S-NPP	76.46120	30.63227	13:12:00	D	12.30
192	FATEHGARH SAHIB	FATEHGARH SAHIB	S-NPP	76.44492	30.63684	13:12:00	D	1.30
193	FATEHGARH SAHIB	KHAMANOH	S-NPP	76.33356	30.79732	13:12:00	D	6.50
194	FATEHGARH SAHIB	KHAMANOH	S-NPP	76.29668	30.80190	13:12:00	D	6.70
195	FAZILKA	ABOHAR	S-NPP	74.43060	29.96669	13:12:00	D	4.30

196	FAZILKA	ABOHAR	S-NPP	74.42931	30.00450	13:12:00	D	3.30
197	FAZILKA	ABOHAR	AQUA	74.03000	30.02900	13:10:00	D	34.10
198	FAZILKA	ABOHAR	AQUA	74.03700	30.03100	13:10:00	D	36.60
199	FAZILKA	ABOHAR	S-NPP	74.07381	30.03460	13:12:00	D	6.70
200	FAZILKA	ABOHAR	TERRA	74.07700	30.03700	11:35:00	D	6.60
201	FAZILKA	ABOHAR	TERRA	74.06500	30.03900	11:35:00	D	11.60
202	FAZILKA	ABOHAR	S-NPP	74.03194	30.03910	13:12:00	D	7.10
203	FAZILKA	ABOHAR	AQUA	74.02600	30.04400	13:10:00	D	39.10
204	FAZILKA	ABOHAR	S-NPP	74.03944	30.04493	13:12:00	D	10.40
205	FAZILKA	ABOHAR	AQUA	74.03200	30.04600	13:10:00	D	27.10
206	FAZILKA	ABOHAR	S-NPP	74.02544	30.04644	13:12:00	D	4.90
207	FAZILKA	ABOHAR	S-NPP	74.11961	30.04815	13:12:00	D	2.40
208	FAZILKA	ABOHAR	S-NPP	74.31715	30.12501	13:12:00	D	4.60
209	FAZILKA	ABOHAR	S-NPP	74.31557	30.12570	13:12:00	D	5.60
210	FAZILKA	FAZILKA	S-NPP	74.14078	30.22890	13:12:00	D	1.90
211	FAZILKA	FAZILKA	S-NPP	74.01503	30.28082	13:12:00	D	2.90
212	FAZILKA	FAZILKA	S-NPP	74.01514	30.28237	13:12:00	D	2.60
213	FAZILKA	FAZILKA	S-NPP	74.18024	30.29669	13:12:00	D	2.60
214	FAZILKA	FAZILKA	S-NPP	73.97752	30.30484	13:12:00	D	12.00
215	FAZILKA	FAZILKA	S-NPP	74.06495	30.31413	13:12:00	D	6.40
216	FAZILKA	FAZILKA	S-NPP	73.98709	30.31974	13:12:00	D	3.90
217	FAZILKA	FAZILKA	S-NPP	74.09769	30.32512	13:12:00	D	3.80
218	FAZILKA	FAZILKA	S-NPP	74.09975	30.33411	13:12:00	D	1.90
219	FAZILKA	FAZILKA	S-NPP	74.11227	30.35378	13:12:00	D	2.20
220	FAZILKA	FAZILKA	S-NPP	73.92442	30.36750	13:12:00	D	4.30
221	FAZILKA	FAZILKA	S-NPP	73.92873	30.36837	13:12:00	D	4.30
222	FAZILKA	FAZILKA	S-NPP	73.92496	30.36922	13:12:00	D	8.50
223	FAZILKA	FAZILKA	S-NPP	74.13042	30.45436	13:12:00	D	8.80
224	FAZILKA	JALALABAD	S-NPP	74.33487	30.45345	13:12:00	D	2.40
225	FAZILKA	JALALABAD	S-NPP	74.25101	30.46183	13:12:00	D	2.30
226	FAZILKA	JALALABAD	S-NPP	74.24947	30.51655	13:12:00	D	3.60
227	FAZILKA	JALALABAD	S-NPP	74.33730	30.55929	13:12:00	D	16.10
228	FAZILKA	JALALABAD	S-NPP	74.33661	30.56307	13:12:00	D	3.00

229	FAZILKA	JALALABAD	S-NPP	74.29660	30.58444	13:12:00	D	3.00
230	FAZILKA	JALALABAD	S-NPP	74.12891	30.60999	13:12:00	D	2.20
231	FAZILKA	JALALABAD	S-NPP	74.38770	30.62796	13:12:00	D	24.40
232	FAZILKA	JALALABAD	S-NPP	74.29307	30.63008	13:12:00	D	1.80
233	FAZILKA	JALALABAD	S-NPP	74.38664	30.63194	13:12:00	D	16.80
234	FAZILKA	JALALABAD	S-NPP	74.38962	30.63672	13:12:00	D	33.60
235	FAZILKA	JALALABAD	S-NPP	74.18277	30.63770	13:12:00	D	2.60
236	FAZILKA	JALALABAD	S-NPP	74.35004	30.64142	13:12:00	D	3.10
237	FAZILKA	JALALABAD	S-NPP	74.31541	30.64293	13:12:00	D	2.00
238	FAZILKA	JALALABAD	S-NPP	74.31949	30.64374	13:12:00	D	3.20
239	FAZILKA	JALALABAD	S-NPP	74.17719	30.64876	13:12:00	D	5.00
240	FAZILKA	JALALABAD	S-NPP	74.34475	30.66135	13:12:00	D	4.70
241	FAZILKA	JALALABAD	S-NPP	74.34881	30.66215	13:12:00	D	7.20
242	FAZILKA	JALALABAD	S-NPP	74.20804	30.66352	13:12:00	D	3.00
243	FAZILKA	JALALABAD	S-NPP	74.34369	30.66533	13:12:00	D	13.70
244	FAZILKA	JALALABAD	S-NPP	74.34774	30.66613	13:12:00	D	19.50
245	FAZILKA	JALALABAD	S-NPP	74.45144	30.69072	13:12:00	D	7.30
246	FAZILKA	JALALABAD	S-NPP	74.32140	30.69074	13:12:00	D	2.80
247	FAZILKA	JALALABAD	TERRA	74.37200	30.69700	11:35:00	D	7.00
248	FAZILKA	JALALABAD	S-NPP	74.36361	30.72441	13:12:00	D	5.50
249	FAZILKA	JALALABAD	S-NPP	74.46783	30.74525	13:12:00	D	2.50
250	FAZILKA	JALALABAD	S-NPP	74.40938	30.77531	13:12:00	D	16.40
251	FAZILKA	JALALABAD	S-NPP	74.40030	30.77769	13:12:00	D	48.20
252	FIROZPUR	FIROZPUR	S-NPP	74.85673	30.75330	13:12:00	D	4.00
253	FIROZPUR	FIROZPUR	S-NPP	74.85735	30.77376	13:12:00	D	4.60
254	FIROZPUR	FIROZPUR	S-NPP	74.86211	30.77443	13:12:00	D	10.20
255	FIROZPUR	FIROZPUR	S-NPP	74.86307	30.77486	13:12:00	D	4.60
256	FIROZPUR	FIROZPUR	S-NPP	74.46638	30.78240	13:12:00	D	9.60
257	FIROZPUR	FIROZPUR	S-NPP	74.51611	30.78390	13:12:00	D	19.60
258	FIROZPUR	FIROZPUR	S-NPP	74.51797	30.79256	13:12:00	D	4.90
259	FIROZPUR	FIROZPUR	S-NPP	74.52089	30.79728	13:12:00	D	4.90
260	FIROZPUR	FIROZPUR	AQUA	74.48200	30.79800	13:10:00	D	22.00
261	FIROZPUR	FIROZPUR	S-NPP	74.48312	30.79815	13:12:00	D	9.00

262	FIROZPUR	FIROZPUR	S-NPP	74.49001	30.80365	13:12:00	D	5.70
263	FIROZPUR	FIROZPUR	TERRA	74.47100	30.80400	11:35:00	D	9.10
264	FIROZPUR	FIROZPUR	S-NPP	74.45211	30.80453	13:12:00	D	7.80
265	FIROZPUR	FIROZPUR	S-NPP	74.45183	30.80541	13:12:00	D	7.80
266	FIROZPUR	FIROZPUR	S-NPP	74.48896	30.80760	13:12:00	D	5.70
267	FIROZPUR	FIROZPUR	S-NPP	74.45267	30.81807	13:12:00	D	6.80
268	FIROZPUR	FIROZPUR	S-NPP	74.56205	30.82601	13:12:00	D	4.20
269	FIROZPUR	FIROZPUR	S-NPP	74.55954	30.82714	13:12:00	D	9.20
270	FIROZPUR	FIROZPUR	S-NPP	74.36534	30.82970	13:12:00	D	6.30
271	FIROZPUR	FIROZPUR	S-NPP	74.56101	30.82994	13:12:00	D	4.20
272	FIROZPUR	FIROZPUR	S-NPP	74.42354	30.83302	13:12:00	D	12.00
273	FIROZPUR	FIROZPUR	S-NPP	74.63196	30.83346	13:12:00	D	3.10
274	FIROZPUR	FIROZPUR	AQUA	74.36500	30.83800	13:10:00	D	32.90
275	FIROZPUR	FIROZPUR	S-NPP	74.42145	30.84093	13:12:00	D	17.70
276	FIROZPUR	FIROZPUR	TERRA	74.53500	30.84400	11:35:00	D	9.30
277	FIROZPUR	FIROZPUR	AQUA	74.39400	30.84500	13:10:00	D	38.60
278	FIROZPUR	FIROZPUR	S-NPP	74.40736	30.84645	13:12:00	D	2.30
279	FIROZPUR	FIROZPUR	S-NPP	74.41136	30.84725	13:12:00	D	20.90
280	FIROZPUR	FIROZPUR	S-NPP	74.47421	30.84732	13:12:00	D	8.10
281	FIROZPUR	FIROZPUR	S-NPP	74.75859	30.84784	13:12:00	D	3.20
282	FIROZPUR	FIROZPUR	S-NPP	74.37614	30.85274	13:12:00	D	11.90
283	FIROZPUR	FIROZPUR	S-NPP	74.38017	30.85354	13:12:00	D	11.90
284	FIROZPUR	FIROZPUR	S-NPP	74.38418	30.85434	13:12:00	D	11.90
285	FIROZPUR	FIROZPUR	AQUA	74.39700	30.85700	13:10:00	D	39.20
286	FIROZPUR	FIROZPUR	TERRA	74.55800	30.86000	11:35:00	D	8.80
287	FIROZPUR	FIROZPUR	S-NPP	74.40209	30.86624	13:12:00	D	27.80
288	FIROZPUR	FIROZPUR	S-NPP	74.40105	30.87019	13:12:00	D	4.50
289	FIROZPUR	FIROZPUR	S-NPP	74.56651	30.89462	13:12:00	D	7.00
290	FIROZPUR	FIROZPUR	S-NPP	74.49634	30.90147	13:12:00	D	9.80
291	FIROZPUR	FIROZPUR	AQUA	74.53400	30.91700	13:10:00	D	107.80
292	FIROZPUR	FIROZPUR	AQUA	74.52700	30.92000	13:10:00	D	88.20
293	FIROZPUR	FIROZPUR	AQUA	74.55500	30.92600	13:10:00	D	29.20
294	FIROZPUR	FIROZPUR	S-NPP	74.46993	30.92713	13:12:00	D	23.20

295	FIROZPUR	FIROZPUR	AQUA	74.43100	30.92900	13:10:00	D	54.00
296	FIROZPUR	FIROZPUR	S-NPP	74.56749	30.93023	13:12:00	D	4.60
297	FIROZPUR	FIROZPUR	S-NPP	74.53845	30.93038	13:12:00	D	35.80
298	FIROZPUR	FIROZPUR	S-NPP	74.43510	30.93258	13:12:00	D	3.20
299	FIROZPUR	FIROZPUR	S-NPP	74.64021	30.94198	13:12:00	D	5.20
300	FIROZPUR	FIROZPUR	S-NPP	74.56923	30.94708	13:12:00	D	4.70
301	FIROZPUR	FIROZPUR	S-NPP	74.57301	30.95609	13:12:00	D	4.20
302	FIROZPUR	FIROZPUR	S-NPP	74.73867	30.96110	13:12:00	D	6.10
303	FIROZPUR	FIROZPUR	S-NPP	74.71254	30.96829	13:12:00	D	3.40
304	FIROZPUR	FIROZPUR	S-NPP	74.70977	30.97109	13:12:00	D	6.20
305	FIROZPUR	FIROZPUR	S-NPP	74.60295	30.98264	13:12:00	D	2.00
306	FIROZPUR	FIROZPUR	S-NPP	74.77482	30.98439	13:12:00	D	5.10
307	FIROZPUR	FIROZPUR	S-NPP	74.62627	30.98726	13:12:00	D	3.40
308	FIROZPUR	FIROZPUR	S-NPP	74.65804	31.00585	13:12:00	D	6.10
309	FIROZPUR	FIROZPUR	S-NPP	74.65702	31.00975	13:12:00	D	6.10
310	FIROZPUR	FIROZPUR	S-NPP	74.74761	31.01126	13:12:00	D	4.60
311	FIROZPUR	FIROZPUR	S-NPP	74.62386	31.01962	13:12:00	D	6.70
312	FIROZPUR	FIROZPUR	AQUA	74.76300	31.03000	13:10:00	D	53.90
313	FIROZPUR	FIROZPUR	AQUA	74.75800	31.03400	13:10:00	D	51.70
314	FIROZPUR	FIROZPUR	S-NPP	74.76544	31.03513	13:12:00	D	19.00
315	FIROZPUR	FIROZPUR	S-NPP	74.78931	31.03574	13:12:00	D	10.30
316	FIROZPUR	FIROZPUR	S-NPP	74.76443	31.03900	13:12:00	D	19.00
317	FIROZPUR	FIROZPUR	TERRA	74.75200	31.04300	11:35:00	D	7.10
318	FIROZPUR	FIROZPUR	S-NPP	74.78587	31.07164	13:12:00	D	6.00
319	FIROZPUR	FIROZPUR	S-NPP	74.75525	31.07384	13:12:00	D	2.90
320	FIROZPUR	FIROZPUR	S-NPP	74.76364	31.08765	13:12:00	D	3.70
321	FIROZPUR	FIROZPUR	S-NPP	74.76062	31.09045	13:12:00	D	5.00
322	FIROZPUR	FIROZPUR	S-NPP	74.76262	31.09152	13:12:00	D	3.70
323	FIROZPUR	ZIRA	S-NPP	75.29725	30.89580	13:12:00	D	7.10
324	FIROZPUR	ZIRA	S-NPP	75.02521	30.89934	13:12:00	D	5.40
325	FIROZPUR	ZIRA	AQUA	75.31700	30.91900	13:10:00	D	19.70
326	FIROZPUR	ZIRA	S-NPP	75.32481	30.92090	13:12:00	D	14.30
327	FIROZPUR	ZIRA	S-NPP	75.34000	30.92776	13:12:00	D	4.50

328	FIROZPUR	ZIRA	S-NPP	75.36399	30.94419	13:12:00	D	5.00
329	FIROZPUR	ZIRA	S-NPP	75.36303	30.94795	13:12:00	D	6.20
330	FIROZPUR	ZIRA	S-NPP	75.23631	30.95558	13:12:00	D	5.80
331	FIROZPUR	ZIRA	S-NPP	74.86582	30.95733	13:12:00	D	28.40
332	FIROZPUR	ZIRA	S-NPP	75.23533	30.95936	13:12:00	D	5.80
333	FIROZPUR	ZIRA	S-NPP	74.94299	31.06171	13:12:00	D	3.50
334	FIROZPUR	ZIRA	S-NPP	74.97096	31.06716	13:12:00	D	12.90
335	FIROZPUR	ZIRA	AQUA	75.05600	31.10700	13:10:00	D	18.20
336	GURDASPUR	BATALA	S-NPP	75.40240	31.62658	13:12:00	D	3.20
337	GURDASPUR	BATALA	S-NPP	75.37642	31.65278	13:12:00	D	4.10
338	GURDASPUR	BATALA	S-NPP	75.33905	31.66904	13:12:00	D	3.80
339	GURDASPUR	BATALA	S-NPP	75.39790	31.67639	13:12:00	D	6.00
340	GURDASPUR	BATALA	S-NPP	75.39838	31.69594	13:12:00	D	3.60
341	GURDASPUR	BATALA	S-NPP	75.44879	31.71326	13:12:00	D	2.40
342	GURDASPUR	BATALA	S-NPP	75.26015	31.72828	13:12:00	D	16.70
343	GURDASPUR	BATALA	S-NPP	75.39312	31.73773	13:12:00	D	4.60
344	GURDASPUR	BATALA	S-NPP	75.28474	31.74087	13:12:00	D	2.70
345	GURDASPUR	BATALA	S-NPP	75.37017	31.74121	13:12:00	D	3.50
346	GURDASPUR	BATALA	S-NPP	75.11607	31.76342	13:12:00	D	6.20
347	GURDASPUR	BATALA	S-NPP	75.37769	31.76655	13:12:00	D	2.50
348	GURDASPUR	BATALA	S-NPP	75.51633	31.76851	13:12:00	D	2.20
349	GURDASPUR	BATALA	S-NPP	75.21995	31.77543	13:12:00	D	1.70
350	GURDASPUR	BATALA	S-NPP	75.51166	31.77671	13:12:00	D	2.80
351	GURDASPUR	BATALA	S-NPP	75.12370	31.81478	13:12:00	D	7.50
352	GURDASPUR	BATALA	S-NPP	75.12489	31.81631	13:12:00	D	7.80
353	GURDASPUR	BATALA	S-NPP	75.11097	31.82019	13:12:00	D	4.50
354	GURDASPUR	BATALA	S-NPP	75.29623	31.82512	13:12:00	D	4.10
355	GURDASPUR	BATALA	S-NPP	75.08647	31.82727	13:12:00	D	9.30
356	GURDASPUR	BATALA	S-NPP	75.16855	31.85887	13:12:00	D	3.90
357	GURDASPUR	BATALA	S-NPP	75.08842	31.86315	13:12:00	D	4.80
358	GURDASPUR	BATALA	S-NPP	75.19769	31.87623	13:12:00	D	5.60
359	GURDASPUR	BATALA	S-NPP	75.10066	31.88126	13:12:00	D	7.10
360	GURDASPUR	BATALA	AQUA	75.02200	31.88300	13:10:00	D	24.50

361	GURDASPUR	BATALA	S-NPP	75.03523	31.89245	13:12:00	D	34.80
362	GURDASPUR	BATALA	S-NPP	75.15879	31.89626	13:12:00	D	3.50
363	GURDASPUR	DERA BABA NANAK	S-NPP	75.08640	31.91399	13:12:00	D	2.60
364	GURDASPUR	DERA BABA NANAK	S-NPP	74.90482	31.92142	13:12:00	D	19.40
365	GURDASPUR	DERA BABA NANAK	S-NPP	75.12439	31.97564	13:12:00	D	3.10
366	GURDASPUR	DERA BABA NANAK	S-NPP	75.10395	32.02182	13:12:00	D	9.20
367	GURDASPUR	DERA BABA NANAK	S-NPP	75.10085	32.02222	13:12:00	D	5.60
368	GURDASPUR	GURDASPUR	S-NPP	75.51245	31.81550	13:12:00	D	2.60
369	GURDASPUR	GURDASPUR	S-NPP	75.31192	31.84345	13:12:00	D	2.20
370	GURDASPUR	GURDASPUR	S-NPP	75.31351	31.84396	13:12:00	D	2.70
371	GURDASPUR	GURDASPUR	S-NPP	75.30807	31.85831	13:12:00	D	7.90
372	GURDASPUR	GURDASPUR	S-NPP	75.39045	31.86612	13:12:00	D	5.80
373	GURDASPUR	GURDASPUR	S-NPP	75.34484	31.90817	13:12:00	D	6.00
374	GURDASPUR	GURDASPUR	S-NPP	75.51360	31.90924	13:12:00	D	3.00
375	GURDASPUR	GURDASPUR	S-NPP	75.37384	31.94473	13:12:00	D	3.00
376	GURDASPUR	GURDASPUR	S-NPP	75.18855	31.94483	13:12:00	D	3.40
377	GURDASPUR	GURDASPUR	S-NPP	75.36669	31.95114	13:12:00	D	6.00
378	GURDASPUR	GURDASPUR	S-NPP	75.40466	31.97374	13:12:00	D	4.10
379	GURDASPUR	GURDASPUR	S-NPP	75.40721	31.97528	13:12:00	D	2.60
380	GURDASPUR	GURDASPUR	S-NPP	75.25410	31.99261	13:12:00	D	3.20
381	GURDASPUR	GURDASPUR	TERRA	75.35300	32.00000	11:35:00	D	10.00
382	GURDASPUR	GURDASPUR	S-NPP	75.32298	32.02517	13:12:00	D	3.10
383	GURDASPUR	GURDASPUR	TERRA	75.16400	32.03200	11:35:00	D	11.30
384	GURDASPUR	GURDASPUR	TERRA	75.15000	32.03400	11:35:00	D	25.40
385	GURDASPUR	GURDASPUR	TERRA	75.15900	32.03400	11:35:00	D	25.00
386	GURDASPUR	GURDASPUR	TERRA	75.14500	32.03700	11:35:00	D	7.00
387	GURDASPUR	GURDASPUR	S-NPP	75.20956	32.04626	13:12:00	D	2.00
388	GURDASPUR	GURDASPUR	S-NPP	75.21918	32.05203	13:12:00	D	5.60
389	GURDASPUR	GURDASPUR	S-NPP	75.16319	32.05294	13:12:00	D	3.00
390	GURDASPUR	GURDASPUR	S-NPP	75.18542	32.05332	13:12:00	D	6.90
391	GURDASPUR	GURDASPUR	S-NPP	75.21822	32.05575	13:12:00	D	5.60
392	GURDASPUR	GURDASPUR	S-NPP	75.24078	32.07571	13:12:00	D	2.70
393	GURDASPUR	GURDASPUR	S-NPP	75.35908	32.08674	13:12:00	D	7.30

394	GURDASPUR	GURDASPUR	S-NPP	75.36141	32.09881	13:12:00	D	4.20
395	GURDASPUR	GURDASPUR	S-NPP	75.39677	32.15194	13:12:00	D	3.00
396	HOSHIARPUR	DASUYA	TERRA	75.56900	31.61800	11:35:00	D	12.50
397	HOSHIARPUR	DASUYA	S-NPP	75.56281	31.69231	13:12:00	D	2.00
398	HOSHIARPUR	DASUYA	S-NPP	75.55388	31.70606	13:12:00	D	3.60
399	HOSHIARPUR	DASUYA	S-NPP	75.58286	31.76163	13:12:00	D	7.60
400	HOSHIARPUR	DASUYA	S-NPP	75.63486	31.80021	13:12:00	D	4.60
401	HOSHIARPUR	DASUYA	S-NPP	75.61484	31.81562	13:12:00	D	3.60
402	HOSHIARPUR	DASUYA	S-NPP	75.61996	31.81659	13:12:00	D	3.60
403	HOSHIARPUR	GARHSHANKAR	S-NPP	76.03735	31.27343	13:12:00	D	3.20
404	HOSHIARPUR	GARHSHANKAR	S-NPP	75.86410	31.29482	13:12:00	D	5.50
405	HOSHIARPUR	GARHSHANKAR	S-NPP	75.86317	31.29848	13:12:00	D	9.20
406	HOSHIARPUR	MUKERIAN	S-NPP	75.55191	31.92806	13:12:00	D	7.60
407	JALANDHAR	JALANDHAR II	S-NPP	75.70489	31.51594	13:12:00	D	2.50
408	JALANDHAR	JALANDHAR II	S-NPP	75.69885	31.51865	13:12:00	D	3.70
409	JALANDHAR	NAKODAR	S-NPP	75.49772	30.98914	13:12:00	D	2.20
410	JALANDHAR	NAKODAR	S-NPP	75.48747	31.18209	13:12:00	D	7.30
411	JALANDHAR	NAKODAR	S-NPP	75.54427	31.19672	13:12:00	D	2.30
412	JALANDHAR	SHAHKOT	S-NPP	75.22183	31.04586	13:12:00	D	6.60
413	JALANDHAR	SHAHKOT	S-NPP	75.22727	31.04689	13:12:00	D	7.00
414	JALANDHAR	SHAHKOT	S-NPP	75.21346	31.05617	13:12:00	D	10.40
415	JALANDHAR	SHAHKOT	S-NPP	75.30358	31.11559	13:12:00	D	33.20
416	JALANDHAR	SHAHKOT	S-NPP	75.22411	31.11612	13:12:00	D	4.40
417	JALANDHAR	SHAHKOT	S-NPP	75.13381	31.16801	13:12:00	D	4.60
418	JALANDHAR	SHAHKOT	AQUA	75.19800	31.17300	13:10:00	D	23.00
419	JALANDHAR	SHAHKOT	S-NPP	75.19118	31.17725	13:12:00	D	4.30
420	KAPURTHALA	BHOLATH	S-NPP	75.45561	31.51537	13:12:00	D	5.90
421	KAPURTHALA	BHOLATH	S-NPP	75.52776	31.53281	13:12:00	D	2.50
422	KAPURTHALA	BHOLATH	S-NPP	75.47752	31.54750	13:12:00	D	4.60
423	KAPURTHALA	BHOLATH	S-NPP	75.46851	31.56131	13:12:00	D	5.00
424	KAPURTHALA	BHOLATH	S-NPP	75.40184	31.56413	13:12:00	D	13.70
425	KAPURTHALA	BHOLATH	S-NPP	75.40089	31.56784	13:12:00	D	13.70
426	KAPURTHALA	BHOLATH	S-NPP	75.51020	31.56929	13:12:00	D	8.40

427	KAPURTHALA	BHOLATH	AQUA	75.55500	31.58100	13:10:00	D	46.20
428	KAPURTHALA	BHOLATH	AQUA	75.55800	31.58500	13:10:00	D	71.30
429	KAPURTHALA	BHOLATH	TERRA	75.56100	31.58600	11:35:00	D	12.10
430	KAPURTHALA	BHOLATH	S-NPP	75.55403	31.58927	13:12:00	D	4.80
431	KAPURTHALA	BHOLATH	S-NPP	75.56438	31.59124	13:12:00	D	7.20
432	KAPURTHALA	BHOLATH	AQUA	75.55100	31.59400	13:10:00	D	41.10
433	KAPURTHALA	BHOLATH	S-NPP	75.56344	31.59492	13:12:00	D	15.80
434	KAPURTHALA	BHOLATH	AQUA	75.55400	31.59800	13:10:00	D	25.10
435	KAPURTHALA	BHOLATH	S-NPP	75.56249	31.59861	13:12:00	D	15.80
436	KAPURTHALA	BHOLATH	S-NPP	75.55121	31.60034	13:12:00	D	4.30
437	KAPURTHALA	BHOLATH	S-NPP	75.46568	31.61517	13:12:00	D	7.40
438	KAPURTHALA	BHOLATH	S-NPP	75.53895	31.64830	13:12:00	D	4.10
439	KAPURTHALA	KAPURTHALA	S-NPP	75.35616	31.25050	13:12:00	D	4.70
440	KAPURTHALA	KAPURTHALA	S-NPP	75.33075	31.38665	13:12:00	D	2.40
441	KAPURTHALA	KAPURTHALA	S-NPP	75.22950	31.38717	13:12:00	D	5.50
442	KAPURTHALA	KAPURTHALA	S-NPP	75.23488	31.38818	13:12:00	D	5.50
443	KAPURTHALA	KAPURTHALA	S-NPP	75.23171	31.39020	13:12:00	D	8.10
444	KAPURTHALA	KAPURTHALA	S-NPP	75.21902	31.39562	13:12:00	D	6.90
445	KAPURTHALA	KAPURTHALA	S-NPP	75.37035	31.41712	13:12:00	D	6.60
446	KAPURTHALA	KAPURTHALA	S-NPP	75.37281	31.41809	13:12:00	D	15.60
447	KAPURTHALA	KAPURTHALA	S-NPP	75.37563	31.41814	13:12:00	D	6.60
448	KAPURTHALA	KAPURTHALA	S-NPP	75.37715	31.42281	13:12:00	D	5.10
449	KAPURTHALA	KAPURTHALA	S-NPP	75.37312	31.54691	13:12:00	D	4.60
450	KAPURTHALA	SULTANPUR LODHI	AQUA	75.03400	31.16700	13:10:00	D	17.10
451	KAPURTHALA	SULTANPUR LODHI	AQUA	75.17300	31.16800	13:10:00	D	17.70
452	KAPURTHALA	SULTANPUR LODHI	S-NPP	75.18829	31.17863	13:12:00	D	18.20
453	KAPURTHALA	SULTANPUR LODHI	S-NPP	75.19373	31.17969	13:12:00	D	18.20
454	KAPURTHALA	SULTANPUR LODHI	S-NPP	75.12259	31.23350	13:12:00	D	22.80
455	KAPURTHALA	SULTANPUR LODHI	AQUA	75.11800	31.23600	13:10:00	D	30.30
456	KAPURTHALA	SULTANPUR LODHI	S-NPP	75.11613	31.23623	13:12:00	D	12.50
457	KAPURTHALA	SULTANPUR LODHI	S-NPP	75.12160	31.23728	13:12:00	D	12.50
458	KAPURTHALA	SULTANPUR LODHI	S-NPP	75.13156	31.24316	13:12:00	D	10.90
459	KAPURTHALA	SULTANPUR LODHI	S-NPP	75.13955	31.25660	13:12:00	D	4.40

460	KAPURTHALA	SULTANPUR LODHI	S-NPP	75.24114	31.26008	13:12:00	D	25.70
461	KAPURTHALA	SULTANPUR LODHI	S-NPP	75.13667	31.26239	13:12:00	D	6.10
462	KAPURTHALA	SULTANPUR LODHI	S-NPP	75.25568	31.28564	13:12:00	D	7.80
463	KAPURTHALA	SULTANPUR LODHI	S-NPP	75.25686	31.28675	13:12:00	D	9.40
464	KAPURTHALA	SULTANPUR LODHI	S-NPP	75.20968	31.28855	13:12:00	D	5.00
465	KAPURTHALA	SULTANPUR LODHI	S-NPP	75.21075	31.28990	13:12:00	D	6.50
466	KAPURTHALA	SULTANPUR LODHI	S-NPP	75.25041	31.32804	13:12:00	D	13.40
467	KAPURTHALA	SULTANPUR LODHI	S-NPP	75.19118	31.36015	13:12:00	D	5.30
468	LUDHIANA	JAGRAON	AQUA	75.41500	30.64500	13:10:00	D	18.70
469	LUDHIANA	JAGRAON	S-NPP	75.41620	30.65397	13:12:00	D	11.30
470	LUDHIANA	JAGRAON	S-NPP	75.42158	30.65498	13:12:00	D	11.30
471	LUDHIANA	JAGRAON	S-NPP	75.52414	30.82593	13:12:00	D	9.30
472	LUDHIANA	JAGRAON	S-NPP	75.36935	30.94521	13:12:00	D	5.00
473	LUDHIANA	JAGRAON	S-NPP	75.36840	30.94897	13:12:00	D	6.20
474	LUDHIANA	KHANNA	AQUA	76.29400	30.69600	13:10:00	D	25.20
475	LUDHIANA	KHANNA	S-NPP	76.31543	30.69644	13:12:00	D	4.40
476	LUDHIANA	KHANNA	AQUA	76.31600	30.70000	13:10:00	D	21.00
477	LUDHIANA	LUDHIANA WEST	S-NPP	75.88258	30.83891	13:12:00	D	8.00
478	LUDHIANA	SAMRALA	TERRA	76.19500	30.76700	11:35:00	D	21.40
479	LUDHIANA	SAMRALA	S-NPP	76.14454	30.77027	13:12:00	D	6.20
480	LUDHIANA	SAMRALA	S-NPP	76.24937	30.78570	13:12:00	D	4.50
481	LUDHIANA	SAMRALA	S-NPP	76.21622	30.79478	13:12:00	D	2.70
482	LUDHIANA	SAMRALA	AQUA	76.20600	30.79800	13:10:00	D	18.20
483	LUDHIANA	SAMRALA	S-NPP	76.20949	30.80113	13:12:00	D	30.10
484	LUDHIANA	SAMRALA	S-NPP	76.25385	30.80921	13:12:00	D	5.10
485	LUDHIANA	SAMRALA	S-NPP	76.22889	30.81558	13:12:00	D	3.10
486	LUDHIANA	SAMRALA	S-NPP	76.25482	30.83555	13:12:00	D	3.30
487	LUDHIANA	SAMRALA	S-NPP	76.23029	30.87262	13:12:00	D	4.10
488	LUDHIANA	SAMRALA	S-NPP	76.28601	30.91679	13:12:00	D	5.50
489	LUDHIANA	SAMRALA	S-NPP	76.26865	30.92495	13:12:00	D	2.10
490	LUDHIANA	SAMRALA	S-NPP	76.30500	30.97258	13:12:00	D	2.30
491	LUDHIANA	SAMRALA	S-NPP	76.27884	30.97529	13:12:00	D	4.50
492	LUDHIANA	SAMRALA	S-NPP	76.22720	30.97710	13:12:00	D	4.00

493	LUDHIANA	SAMRALA	S-NPP	76.22631	30.98072	13:12:00	D	4.00
494	MANSA	SARDULGARH	S-NPP	75.26869	29.60619	13:12:00	D	2.30
495	MANSA	SARDULGARH	S-NPP	75.27140	29.61888	13:12:00	D	9.40
496	MANSA	SARDULGARH	S-NPP	75.27042	29.62275	13:12:00	D	9.40
497	MANSA	SARDULGARH	TERRA	75.27100	29.62700	11:35:00	D	9.30
498	MANSA	SARDULGARH	S-NPP	75.31704	29.64789	13:12:00	D	10.00
499	MANSA	SARDULGARH	S-NPP	75.29317	29.66328	13:12:00	D	7.40
500	MANSA	SARDULGARH	S-NPP	75.26318	29.66551	13:12:00	D	6.60
501	MANSA	SARDULGARH	S-NPP	75.26879	29.66660	13:12:00	D	4.60
502	MANSA	SARDULGARH	S-NPP	75.29219	29.66714	13:12:00	D	7.70
503	MANSA	SARDULGARH	AQUA	75.28100	29.66800	13:10:00	D	37.50
504	MANSA	SARDULGARH	S-NPP	75.27245	29.67543	13:12:00	D	12.30
505	MANSA	SARDULGARH	S-NPP	75.27805	29.67653	13:12:00	D	17.70
506	MANSA	SARDULGARH	TERRA	75.23700	29.67700	11:35:00	D	13.00
507	MANSA	SARDULGARH	AQUA	75.28300	29.67800	13:10:00	D	24.30
508	MANSA	SARDULGARH	S-NPP	75.26830	29.71516	13:12:00	D	4.70
509	MANSA	SARDULGARH	S-NPP	75.24213	29.78725	13:12:00	D	13.80
510	MANSA	SARDULGARH	S-NPP	75.21181	29.81380	13:12:00	D	8.00
511	MOGA	BAGHA PURANA	AQUA	74.94500	30.69600	13:10:00	D	22.20
512	MOGA	BAGHA PURANA	AQUA	74.93900	30.70000	13:10:00	D	18.10
513	MOGA	BAGHA PURANA	S-NPP	75.06232	30.76080	13:12:00	D	4.80
514	MOGA	MOGA	S-NPP	75.28037	30.70984	13:12:00	D	6.00
515	MOGA	MOGA	AQUA	75.19400	30.72000	13:10:00	D	42.60
516	MOGA	MOGA	S-NPP	75.19132	30.72076	13:12:00	D	18.90
517	MOGA	MOGA	S-NPP	75.24976	30.73984	13:12:00	D	16.50
518	MOGA	MOGA	S-NPP	75.25523	30.74088	13:12:00	D	16.50
519	MOGA	MOGA	S-NPP	75.25253	30.74178	13:12:00	D	28.10
520	MOGA	MOGA	S-NPP	75.10779	30.76560	13:12:00	D	1.60
521	MOGA	MOGA	S-NPP	75.02336	30.83861	13:12:00	D	4.40
522	MOGA	MOGA	S-NPP	75.09470	30.85655	13:12:00	D	11.10
523	MOGA	MOGA	S-NPP	75.09371	30.86037	13:12:00	D	11.10
524	MOGA	NIHAL SINGH WALA	S-NPP	75.28895	30.61794	13:12:00	D	1.90
525	MOGA	NIHAL SINGH WALA	S-NPP	75.29853	30.64762	13:12:00	D	2.60

526	MUKTSAR	GIDDARBAHA	S-NPP	74.69318	30.21362	13:12:00	D	6.90
527	MUKTSAR	GIDDARBAHA	S-NPP	74.60923	30.28010	13:12:00	D	4.60
528	MUKTSAR	GIDDARBAHA	S-NPP	74.72984	30.33085	13:12:00	D	30.10
529	MUKTSAR	GIDDARBAHA	AQUA	74.74200	30.34200	13:10:00	D	23.20
530	MUKTSAR	GIDDARBAHA	S-NPP	74.74817	30.35514	13:12:00	D	5.20
531	MUKTSAR	GIDDARBAHA	S-NPP	74.78419	30.35815	13:12:00	D	4.70
532	MUKTSAR	GIDDARBAHA	S-NPP	74.67252	30.36084	13:12:00	D	3.90
533	MUKTSAR	GIDDARBAHA	S-NPP	74.73721	30.37360	13:12:00	D	4.30
534	MUKTSAR	GIDDARBAHA	TERRA	74.74400	30.41500	11:35:00	D	14.40
535	MUKTSAR	MALAUT	S-NPP	74.55575	29.97920	13:12:00	D	2.00
536	MUKTSAR	MALAUT	S-NPP	74.66162	30.04213	13:12:00	D	3.40
537	MUKTSAR	MALAUT	S-NPP	74.41675	30.14108	13:12:00	D	7.80
538	MUKTSAR	MALAUT	S-NPP	74.41545	30.14117	13:12:00	D	8.90
539	MUKTSAR	MALAUT	S-NPP	74.43607	30.14923	13:12:00	D	1.90
540	MUKTSAR	MALAUT	TERRA	74.39900	30.15600	11:35:00	D	12.40
541	MUKTSAR	MALAUT	TERRA	74.38600	30.15800	11:35:00	D	39.10
542	MUKTSAR	MALAUT	S-NPP	74.40425	30.17233	13:12:00	D	3.10
543	MUKTSAR	MALAUT	S-NPP	74.40833	30.17315	13:12:00	D	4.30
544	MUKTSAR	MUKTSAR	TERRA	74.48100	30.33800	11:35:00	D	7.60
545	MUKTSAR	MUKTSAR	TERRA	74.46800	30.34000	11:35:00	D	7.50
546	MUKTSAR	MUKTSAR	TERRA	74.41200	30.48400	11:35:00	D	8.10
547	MUKTSAR	MUKTSAR	S-NPP	74.43650	30.49095	13:12:00	D	5.40
548	MUKTSAR	MUKTSAR	S-NPP	74.54950	30.50954	13:12:00	D	1.90
549	MUKTSAR	MUKTSAR	S-NPP	74.49572	30.58627	13:12:00	D	9.70
550	MUKTSAR	MUKTSAR	S-NPP	74.47447	30.60358	13:12:00	D	37.50
551	MUKTSAR	MUKTSAR	S-NPP	74.54541	30.60431	13:12:00	D	3.10
552	MUKTSAR	MUKTSAR	S-NPP	74.54523	30.60535	13:12:00	D	3.50
553	PATIALA	NABHA	S-NPP	76.22638	30.38549	13:12:00	D	3.60
554	PATIALA	NABHA	S-NPP	76.22887	30.38689	13:12:00	D	2.90
555	PATIALA	NABHA	S-NPP	76.32198	30.50189	13:12:00	D	8.10
556	PATIALA	PATIALA	S-NPP	76.37829	30.11623	13:12:00	D	5.80
557	PATIALA	PATIALA	S-NPP	76.37565	30.12713	13:12:00	D	3.60
558	PATIALA	PATIALA	S-NPP	76.33084	30.14170	13:12:00	D	3.30

559	PATIALA	PATIALA	S-NPP	76.53436	30.16761	13:12:00	D	2.80
560	PATIALA	PATIALA	S-NPP	76.30477	30.21580	13:12:00	D	2.70
561	PATIALA	PATIALA	AQUA	76.59900	30.22400	13:10:00	D	44.20
562	PATIALA	PATIALA	AQUA	76.59200	30.22500	13:10:00	D	30.10
563	PATIALA	PATIALA	S-NPP	76.40018	30.22586	13:12:00	D	6.50
564	PATIALA	PATIALA	AQUA	76.61400	30.22900	13:10:00	D	26.50
565	PATIALA	PATIALA	S-NPP	76.60921	30.23376	13:12:00	D	24.70
566	PATIALA	PATIALA	S-NPP	76.46949	30.23488	13:12:00	D	6.50
567	PATIALA	PATIALA	S-NPP	76.57557	30.23561	13:12:00	D	5.40
568	PATIALA	PATIALA	S-NPP	76.40559	30.24580	13:12:00	D	4.20
569	PATIALA	PATIALA	S-NPP	76.47486	30.25474	13:12:00	D	3.90
570	PATIALA	PATIALA	AQUA	76.62500	30.27100	13:10:00	D	14.00
571	PATIALA	PATIALA	S-NPP	76.21895	30.27827	13:12:00	D	8.60
572	PATIALA	PATIALA	S-NPP	76.43861	30.27831	13:12:00	D	10.30
573	PATIALA	PATIALA	S-NPP	76.26311	30.28049	13:12:00	D	2.40
574	PATIALA	PATIALA	S-NPP	76.26566	30.32130	13:12:00	D	8.50
575	PATIALA	PATIALA	S-NPP	76.49112	30.32143	13:12:00	D	12.50
576	PATIALA	PATIALA	AQUA	76.48400	30.34800	13:10:00	D	17.90
577	PATIALA	PATIALA	S-NPP	76.47726	30.42055	13:12:00	D	13.50
578	PATIALA	PATIALA	S-NPP	76.48542	30.43749	13:12:00	D	3.10
579	PATIALA	PATIALA	S-NPP	76.36868	30.45746	13:12:00	D	9.70
580	PATIALA	RAJPURA	S-NPP	76.64346	30.30799	13:12:00	D	4.50
581	PATIALA	RAJPURA	S-NPP	76.67570	30.33995	13:12:00	D	16.60
582	PATIALA	RAJPURA	S-NPP	76.72504	30.34135	13:12:00	D	3.60
583	PATIALA	RAJPURA	S-NPP	76.52947	30.35109	13:12:00	D	2.40
584	PATIALA	RAJPURA	TERRA	76.58100	30.35700	11:35:00	D	13.20
585	PATIALA	RAJPURA	S-NPP	76.64305	30.37940	13:12:00	D	2.40
586	PATIALA	RAJPURA	S-NPP	76.59084	30.38859	13:12:00	D	2.90
587	PATIALA	RAJPURA	S-NPP	76.70631	30.40583	13:12:00	D	2.80
588	PATIALA	RAJPURA	S-NPP	76.71581	30.40756	13:12:00	D	1.70
589	PATIALA	RAJPURA	S-NPP	76.54022	30.43189	13:12:00	D	2.40
590	PATIALA	RAJPURA	S-NPP	76.58356	30.43968	13:12:00	D	3.80
591	PATIALA	RAJPURA	S-NPP	76.61541	30.45287	13:12:00	D	3.80

592	PATIALA	RAJPURA	S-NPP	76.61706	30.45426	13:12:00	D	8.70
593	PATIALA	RAJPURA	S-NPP	76.61454	30.45645	13:12:00	D	3.80
594	PATIALA	RAJPURA	S-NPP	76.72000	30.48060	13:12:00	D	2.30
595	PATIALA	RAJPURA	S-NPP	76.58325	30.51166	13:12:00	D	3.80
596	PATIALA	RAJPURA	S-NPP	76.56319	30.51176	13:12:00	D	2.70
597	PATIALA	RAJPURA	S-NPP	76.56800	30.51263	13:12:00	D	4.80
598	PATIALA	RAJPURA	S-NPP	76.70402	30.54129	01:54:00	N	2.60
599	PATIALA	RAJPURA	S-NPP	76.53687	30.54856	13:12:00	D	2.50
600	PATIALA	RAJPURA	S-NPP	76.68870	30.54932	13:12:00	D	2.70
601	PATIALA	RAJPURA	S-NPP	76.67882	30.56987	13:12:00	D	9.40
602	PATIALA	RAJPURA	S-NPP	76.57661	30.57084	13:12:00	D	5.20
603	PATIALA	RAJPURA	S-NPP	76.59574	30.57435	13:12:00	D	8.40
604	PATIALA	RAJPURA	S-NPP	76.52081	30.59433	13:12:00	D	9.40
605	PATIALA	RAJPURA	AQUA	76.55500	30.60300	13:10:00	D	15.40
606	PATIALA	RAJPURA	S-NPP	76.54792	30.60675	13:12:00	D	18.20
607	PATIALA	RAJPURA	S-NPP	76.59803	30.62704	13:12:00	D	6.50
608	PATIALA	RAJPURA	S-NPP	76.59065	30.63690	13:12:00	D	2.00
609	PATIALA	SAMANA	S-NPP	76.20969	29.84346	13:12:00	D	3.90
610	PATIALA	SAMANA	TERRA	76.23800	29.86400	11:35:00	D	21.40
611	PATIALA	SAMANA	S-NPP	76.19839	29.86827	13:12:00	D	4.00
612	PATIALA	SAMANA	S-NPP	76.22448	29.86930	13:12:00	D	3.40
613	PATIALA	SAMANA	S-NPP	76.22952	29.87024	13:12:00	D	5.10
614	PATIALA	SAMANA	S-NPP	76.13911	29.87262	13:12:00	D	3.40
615	PATIALA	SAMANA	S-NPP	76.21083	29.88213	13:12:00	D	2.60
616	PATIALA	SAMANA	S-NPP	76.14656	29.88557	13:12:00	D	10.40
617	PATIALA	SAMANA	S-NPP	76.16144	29.91144	13:12:00	D	10.50
618	PATIALA	SAMANA	S-NPP	76.01620	29.92807	13:12:00	D	3.40
619	PATIALA	SAMANA	S-NPP	76.13993	29.93444	13:12:00	D	4.70
620	PATIALA	SAMANA	S-NPP	76.14217	29.93639	13:12:00	D	4.70
621	PATIALA	SAMANA	S-NPP	76.04150	29.95609	13:12:00	D	4.20
622	PATIALA	SAMANA	S-NPP	76.21860	30.01217	13:12:00	D	10.00
623	PATIALA	SAMANA	AQUA	76.21200	30.01400	13:10:00	D	21.30
624	PATIALA	SAMANA	S-NPP	76.21770	30.01584	13:12:00	D	6.40

625	PATIALA	SAMANA	S-NPP	76.20172	30.01672	13:12:00	D	2.20
626	PATIALA	SAMANA	S-NPP	76.20675	30.01765	13:12:00	D	3.40
627	PATIALA	SAMANA	TERRA	76.26600	30.16000	11:35:00	D	41.40
628	PATIALA	SAMANA	S-NPP	76.26912	30.16087	13:12:00	D	17.90
629	PATIALA	SAMANA	TERRA	76.26100	30.16200	11:35:00	D	35.50
630	PATIALA	SAMANA	S-NPP	76.27483	30.16829	13:12:00	D	8.60
631	PATIALA	SAMANA	S-NPP	76.15795	30.21918	13:12:00	D	3.30
632	RUPNAGAR	ANANDPUR SAHIB	S-NPP	76.49508	31.24419	13:12:00	D	3.70
633	RUPNAGAR	CHAMKOR SAHIB	S-NPP	76.46803	30.75788	13:12:00	D	10.00
634	RUPNAGAR	CHAMKOR SAHIB	S-NPP	76.47285	30.75875	13:12:00	D	2.60
635	RUPNAGAR	CHAMKOR SAHIB	S-NPP	76.47448	30.75931	13:12:00	D	2.80
636	RUPNAGAR	CHAMKOR SAHIB	AQUA	76.47000	30.78600	13:10:00	D	21.30
637	RUPNAGAR	CHAMKOR SAHIB	S-NPP	76.46183	30.79070	13:12:00	D	4.00
638	RUPNAGAR	CHAMKOR SAHIB	S-NPP	76.46095	30.79429	13:12:00	D	4.90
639	RUPNAGAR	CHAMKOR SAHIB	S-NPP	76.54353	30.84665	13:12:00	D	3.80
640	RUPNAGAR	CHAMKOR SAHIB	S-NPP	76.44316	30.93779	13:12:00	D	1.50
641	RUPNAGAR	RUPNAGAR	AQUA	76.49900	30.96500	13:10:00	D	26.70
642	RUPNAGAR	RUPNAGAR	S-NPP	76.50124	30.96694	13:12:00	D	8.30
643	RUPNAGAR	RUPNAGAR	S-NPP	76.57796	31.12073	13:12:00	D	3.50
644	SANGRUR	DHURI	S-NPP	75.84938	30.38804	13:12:00	D	8.60
645	SANGRUR	MALERKOTLA	AQUA	75.99500	30.48800	13:10:00	D	18.80
646	SANGRUR	MALERKOTLA	S-NPP	75.99708	30.49767	13:12:00	D	16.50
647	SANGRUR	MOONAK	S-NPP	75.92008	29.74606	13:12:00	D	3.90
648	SANGRUR	MOONAK	S-NPP	75.97910	29.74930	13:12:00	D	2.70
649	SANGRUR	MOONAK	S-NPP	76.05524	29.79067	13:12:00	D	13.80
650	SANGRUR	MOONAK	S-NPP	76.04907	29.84805	13:12:00	D	4.90
651	SANGRUR	MOONAK	S-NPP	76.04817	29.85176	13:12:00	D	7.50
652	SANGRUR	SANGRUR	S-NPP	75.93559	30.22478	13:12:00	D	5.90
653	SANGRUR	SANGRUR	S-NPP	75.93848	30.22488	13:12:00	D	14.40
654	SANGRUR	SANGRUR	S-NPP	75.94073	30.22576	13:12:00	D	9.90
655	SANGRUR	SUNAM	S-NPP	75.68840	29.98649	13:12:00	D	4.10
656	SANGRUR	SUNAM	S-NPP	75.84966	30.02501	13:12:00	D	4.30
657	SANGRUR	SUNAM	S-NPP	75.65868	30.11791	13:12:00	D	3.40

658	SAS NAGAR	DERABASSI	S-NPP	76.91936	30.39081	13:12:00	D	1.80
659	SAS NAGAR	DERABASSI	S-NPP	76.80174	30.41939	13:12:00	D	2.50
660	SAS NAGAR	DERABASSI	S-NPP	76.83390	30.46961	13:12:00	D	3.70
661	SAS NAGAR	DERABASSI	S-NPP	76.82114	30.51013	13:12:00	D	3.70
662	SAS NAGAR	DERABASSI	S-NPP	76.90910	30.52974	13:12:00	D	2.70
663	SAS NAGAR	DERABASSI	S-NPP	76.78062	30.53614	13:12:00	D	2.80
664	SAS NAGAR	DERABASSI	S-NPP	76.83155	30.58965	13:12:00	D	5.10
665	SAS NAGAR	KHARAR	S-NPP	76.51868	30.62391	13:12:00	D	2.60
666	SAS NAGAR	KHARAR	AQUA	76.53300	30.66500	13:10:00	D	26.90
667	SAS NAGAR	KHARAR	AQUA	76.53800	30.66500	13:10:00	D	21.80
668	SAS NAGAR	KHARAR	S-NPP	76.57850	30.73666	13:12:00	D	2.70
669	SAS NAGAR	KHARAR	S-NPP	76.55980	30.75194	13:12:00	D	6.00
670	SAS NAGAR	KHARAR	S-NPP	76.59598	30.77420	13:12:00	D	1.90
671	SBS NAGAR	BALACHAUR	S-NPP	76.33289	31.00403	13:12:00	D	3.90
672	SBS NAGAR	SBS NAGAR	S-NPP	76.17621	31.01691	13:12:00	D	2.00
673	SBS NAGAR	SBS NAGAR	S-NPP	76.24728	31.04114	13:12:00	D	4.40
674	SBS NAGAR	SBS NAGAR	S-NPP	76.23653	31.07684	13:12:00	D	3.10
675	TARN TARAN	KHADOOR SAHIB	S-NPP	74.95899	31.19402	13:12:00	D	17.80
676	TARN TARAN	KHADOOR SAHIB	S-NPP	74.99889	31.19772	13:12:00	D	6.70
677	TARN TARAN	KHADOOR SAHIB	TERRA	75.01200	31.22200	11:35:00	D	8.00
678	TARN TARAN	KHADOOR SAHIB	S-NPP	74.95258	31.24095	13:12:00	D	1.90
679	TARN TARAN	KHADOOR SAHIB	TERRA	74.91900	31.25000	11:35:00	D	8.00
680	TARN TARAN	KHADOOR SAHIB	S-NPP	75.04068	31.25554	13:12:00	D	8.60
681	TARN TARAN	KHADOOR SAHIB	S-NPP	75.04135	31.25784	13:12:00	D	5.50
682	TARN TARAN	KHADOOR SAHIB	S-NPP	74.97194	31.27412	13:12:00	D	2.30
683	TARN TARAN	KHADOOR SAHIB	S-NPP	75.06324	31.27991	13:12:00	D	4.40
684	TARN TARAN	KHADOOR SAHIB	S-NPP	75.02727	31.28488	13:12:00	D	9.50
685	TARN TARAN	KHADOOR SAHIB	AQUA	75.02000	31.28600	13:10:00	D	19.50
686	TARN TARAN	KHADOOR SAHIB	S-NPP	75.06127	31.28750	13:12:00	D	3.80
687	TARN TARAN	KHADOOR SAHIB	S-NPP	75.03631	31.29463	13:12:00	D	4.50
688	TARN TARAN	KHADOOR SAHIB	S-NPP	75.01778	31.29903	13:12:00	D	5.60
689	TARN TARAN	KHADOOR SAHIB	S-NPP	75.07474	31.30207	13:12:00	D	4.80
690	TARN TARAN	KHADOOR SAHIB	S-NPP	75.05635	31.30649	13:12:00	D	13.60

691	TARN TARAN	KHADOOR SAHIB	S-NPP	75.02132	31.30770	13:12:00	D	12.50
692	TARN TARAN	KHADOOR SAHIB	TERRA	75.07200	31.32600	11:35:00	D	7.10
693	TARN TARAN	KHADOOR SAHIB	S-NPP	74.93571	31.33614	13:12:00	D	1.70
694	TARN TARAN	KHADOOR SAHIB	S-NPP	74.93729	31.33957	13:12:00	D	17.00
695	TARN TARAN	KHADOOR SAHIB	S-NPP	74.93472	31.33996	13:12:00	D	14.20
696	TARN TARAN	KHADOOR SAHIB	TERRA	74.93200	31.34000	11:35:00	D	9.00
697	TARN TARAN	KHADOOR SAHIB	S-NPP	74.94842	31.34170	13:12:00	D	5.60
698	TARN TARAN	KHADOOR SAHIB	S-NPP	74.94583	31.34215	13:12:00	D	6.50
699	TARN TARAN	KHADOOR SAHIB	S-NPP	74.84490	31.34641	13:12:00	D	4.30
700	TARN TARAN	KHADOOR SAHIB	S-NPP	75.04448	31.35204	13:12:00	D	4.00
701	TARN TARAN	KHADOOR SAHIB	S-NPP	75.04169	31.35302	13:12:00	D	2.70
702	TARN TARAN	KHADOOR SAHIB	S-NPP	75.09582	31.35387	13:12:00	D	3.10
703	TARN TARAN	KHADOOR SAHIB	S-NPP	74.99083	31.35778	13:12:00	D	10.00
704	TARN TARAN	KHADOOR SAHIB	S-NPP	75.11768	31.35803	13:12:00	D	3.80
705	TARN TARAN	KHADOOR SAHIB	S-NPP	74.98816	31.35848	13:12:00	D	12.00
706	TARN TARAN	KHADOOR SAHIB	S-NPP	75.05717	31.36004	13:12:00	D	7.80
707	TARN TARAN	KHADOOR SAHIB	S-NPP	75.05349	31.36172	13:12:00	D	11.20
708	TARN TARAN	KHADOOR SAHIB	S-NPP	74.98065	31.36501	13:12:00	D	10.40
709	TARN TARAN	KHADOOR SAHIB	S-NPP	74.98972	31.37478	13:12:00	D	3.60
710	TARN TARAN	KHADOOR SAHIB	AQUA	75.03700	31.37600	13:10:00	D	18.10
711	TARN TARAN	KHADOOR SAHIB	S-NPP	74.81793	31.38146	13:12:00	D	8.80
712	TARN TARAN	KHADOOR SAHIB	S-NPP	75.03380	31.38338	13:12:00	D	5.60
713	TARN TARAN	KHADOOR SAHIB	S-NPP	74.88169	31.38581	13:12:00	D	6.60
714	TARN TARAN	KHADOOR SAHIB	TERRA	74.91500	31.38600	11:35:00	D	10.60
715	TARN TARAN	KHADOOR SAHIB	S-NPP	75.02731	31.38611	13:12:00	D	5.60
716	TARN TARAN	KHADOOR SAHIB	S-NPP	74.75327	31.40124	13:12:00	D	10.30
717	TARN TARAN	KHADOOR SAHIB	S-NPP	74.93543	31.40425	13:12:00	D	3.20
718	TARN TARAN	KHADOOR SAHIB	S-NPP	75.10842	31.40583	13:12:00	D	4.50
719	TARN TARAN	KHADOOR SAHIB	S-NPP	74.82775	31.41157	13:12:00	D	3.70
720	TARN TARAN	KHADOOR SAHIB	S-NPP	74.77724	31.41459	13:12:00	D	5.50
721	TARN TARAN	KHADOOR SAHIB	S-NPP	74.98431	31.41769	13:12:00	D	12.30
722	TARN TARAN	KHADOOR SAHIB	S-NPP	74.77623	31.41843	13:12:00	D	2.50
723	TARN TARAN	KHADOOR SAHIB	S-NPP	74.74250	31.41939	13:12:00	D	6.00

724	TARN TARAN	KHADOOR SAHIB	AQUA	75.05100	31.42200	13:10:00	D	19.00
725	TARN TARAN	KHADOOR SAHIB	S-NPP	75.05235	31.42282	13:12:00	D	22.80
726	TARN TARAN	KHADOOR SAHIB	S-NPP	75.11538	31.42305	13:12:00	D	3.10
727	TARN TARAN	KHADOOR SAHIB	S-NPP	74.88282	31.42619	13:12:00	D	4.60
728	TARN TARAN	KHADOOR SAHIB	S-NPP	75.09162	31.42641	13:12:00	D	5.30
729	TARN TARAN	KHADOOR SAHIB	S-NPP	75.03940	31.42830	13:12:00	D	4.20
730	TARN TARAN	KHADOOR SAHIB	S-NPP	75.04488	31.42935	13:12:00	D	4.20
731	TARN TARAN	KHADOOR SAHIB	TERRA	74.89000	31.43000	11:35:00	D	10.20
732	TARN TARAN	KHADOOR SAHIB	S-NPP	75.12430	31.43270	13:12:00	D	13.80
733	TARN TARAN	KHADOOR SAHIB	TERRA	74.88400	31.43300	11:35:00	D	13.50
734	TARN TARAN	KHADOOR SAHIB	S-NPP	74.87824	31.43460	13:12:00	D	8.30
735	TARN TARAN	KHADOOR SAHIB	S-NPP	74.74751	31.43701	13:12:00	D	9.20
736	TARN TARAN	KHADOOR SAHIB	S-NPP	74.87979	31.43765	13:12:00	D	25.10
737	TARN TARAN	KHADOOR SAHIB	S-NPP	74.87724	31.43842	13:12:00	D	18.60
738	TARN TARAN	KHADOOR SAHIB	S-NPP	75.17362	31.46193	13:12:00	D	36.80
739	TARN TARAN	KHADOOR SAHIB	S-NPP	74.79995	31.46347	13:12:00	D	4.40
740	TARN TARAN	KHADOOR SAHIB	S-NPP	75.21481	31.47766	13:12:00	D	5.20
741	TARN TARAN	KHADOOR SAHIB	S-NPP	75.00069	31.47868	13:12:00	D	5.80
742	TARN TARAN	KHADOOR SAHIB	S-NPP	75.10400	31.47899	13:12:00	D	2.40
743	TARN TARAN	KHADOOR SAHIB	S-NPP	75.05101	31.48452	13:12:00	D	7.40
744	TARN TARAN	KHADOOR SAHIB	AQUA	75.13800	31.49800	13:10:00	D	20.20
745	TARN TARAN	KHADOOR SAHIB	S-NPP	74.75493	31.49909	13:12:00	D	8.10
746	TARN TARAN	KHADOOR SAHIB	S-NPP	74.94307	31.49940	13:12:00	D	3.80
747	TARN TARAN	KHADOOR SAHIB	S-NPP	74.63858	31.50033	13:12:00	D	5.30
748	TARN TARAN	KHADOOR SAHIB	S-NPP	74.64058	31.50127	13:12:00	D	8.30
749	TARN TARAN	KHADOOR SAHIB	S-NPP	74.64429	31.50146	13:12:00	D	5.30
750	TARN TARAN	KHADOOR SAHIB	S-NPP	74.81335	31.50233	13:12:00	D	3.30
751	TARN TARAN	KHADOOR SAHIB	S-NPP	75.14888	31.50358	13:12:00	D	10.60
752	TARN TARAN	KHADOOR SAHIB	TERRA	74.81100	31.50700	11:35:00	D	9.40
753	TARN TARAN	KHADOOR SAHIB	S-NPP	74.92900	31.50867	13:12:00	D	4.30
754	TARN TARAN	KHADOOR SAHIB	S-NPP	74.64225	31.50919	13:12:00	D	7.10
755	TARN TARAN	KHADOOR SAHIB	TERRA	74.79700	31.51000	11:35:00	D	6.90
756	TARN TARAN	KHADOOR SAHIB	S-NPP	74.73166	31.51076	13:12:00	D	5.70

757	TARN TARAN	KHADOOR SAHIB	S-NPP	74.73387	31.51118	13:12:00	D	6.50
758	TARN TARAN	KHADOOR SAHIB	S-NPP	74.76885	31.51389	13:12:00	D	6.20
759	TARN TARAN	KHADOOR SAHIB	S-NPP	74.97974	31.51450	13:12:00	D	14.90
760	TARN TARAN	KHADOOR SAHIB	S-NPP	74.97876	31.51829	13:12:00	D	14.90
761	TARN TARAN	KHADOOR SAHIB	S-NPP	75.00728	31.51982	13:12:00	D	4.10
762	TARN TARAN	KHADOOR SAHIB	S-NPP	74.80830	31.52148	13:12:00	D	4.20
763	TARN TARAN	KHADOOR SAHIB	S-NPP	74.90178	31.52343	13:12:00	D	4.70
764	TARN TARAN	KHADOOR SAHIB	AQUA	74.74500	31.55800	13:10:00	D	26.60
765	TARN TARAN	KHADOOR SAHIB	S-NPP	74.72977	31.56295	13:12:00	D	19.70
766	TARN TARAN	PATTI	S-NPP	74.58891	31.09725	13:12:00	D	46.80
767	TARN TARAN	PATTI	TERRA	74.69500	31.12500	11:35:00	D	11.40
768	TARN TARAN	PATTI	S-NPP	74.79504	31.14193	13:12:00	D	6.50
769	TARN TARAN	PATTI	S-NPP	74.64254	31.14876	13:12:00	D	7.40
770	TARN TARAN	PATTI	S-NPP	74.62206	31.15705	13:12:00	D	2.30
771	TARN TARAN	PATTI	TERRA	74.56500	31.15800	11:35:00	D	25.80
772	TARN TARAN	PATTI	S-NPP	74.57183	31.15848	13:12:00	D	6.90
773	TARN TARAN	PATTI	S-NPP	74.57242	31.15969	13:12:00	D	10.70
774	TARN TARAN	PATTI	TERRA	74.55200	31.16100	11:35:00	D	9.90
775	TARN TARAN	PATTI	S-NPP	74.57079	31.16238	13:12:00	D	6.90
776	TARN TARAN	PATTI	S-NPP	74.63086	31.16622	13:12:00	D	3.40
777	TARN TARAN	PATTI	S-NPP	74.82971	31.16896	13:12:00	D	1.70
778	TARN TARAN	PATTI	S-NPP	74.57249	31.17914	13:12:00	D	2.70
779	TARN TARAN	PATTI	AQUA	74.67600	31.18400	13:10:00	D	29.20
780	TARN TARAN	PATTI	TERRA	74.88300	31.18400	11:35:00	D	6.40
781	TARN TARAN	PATTI	S-NPP	74.57042	31.18694	13:12:00	D	11.20
782	TARN TARAN	PATTI	AQUA	74.67100	31.18700	13:10:00	D	23.70
783	TARN TARAN	PATTI	TERRA	74.86900	31.18700	11:35:00	D	14.00
784	TARN TARAN	PATTI	S-NPP	74.68047	31.18878	13:12:00	D	7.30
785	TARN TARAN	PATTI	S-NPP	74.68438	31.19324	13:12:00	D	14.40
786	TARN TARAN	PATTI	S-NPP	74.61584	31.20006	13:12:00	D	20.00
787	TARN TARAN	PATTI	S-NPP	74.76443	31.20914	13:12:00	D	4.90
788	TARN TARAN	PATTI	S-NPP	74.60696	31.21058	13:12:00	D	9.40
789	TARN TARAN	PATTI	S-NPP	74.68975	31.21877	13:12:00	D	3.70

790	TARN TARAN	PATTI	S-NPP	74.60967	31.22339	13:12:00	D	2.70
791	TARN TARAN	PATTI	S-NPP	74.61444	31.22842	13:12:00	D	4.30
792	TARN TARAN	PATTI	TERRA	74.92200	31.23000	11:35:00	D	9.80
793	TARN TARAN	PATTI	S-NPP	74.84729	31.23360	13:12:00	D	3.30
794	TARN TARAN	PATTI	TERRA	74.83800	31.23400	11:35:00	D	16.80
795	TARN TARAN	PATTI	S-NPP	74.62498	31.23458	13:12:00	D	6.40
796	TARN TARAN	PATTI	S-NPP	74.81710	31.23574	13:12:00	D	3.80
797	TARN TARAN	PATTI	S-NPP	74.78676	31.23787	13:12:00	D	5.70
798	TARN TARAN	PATTI	AQUA	74.68200	31.24800	13:10:00	D	31.00
799	TARN TARAN	PATTI	S-NPP	74.90806	31.24958	13:12:00	D	15.60
800	TARN TARAN	PATTI	S-NPP	74.68056	31.25362	13:12:00	D	3.90
801	TARN TARAN	PATTI	S-NPP	74.67953	31.25750	13:12:00	D	3.90
802	TARN TARAN	PATTI	S-NPP	74.73779	31.26479	13:12:00	D	3.40
803	TARN TARAN	PATTI	S-NPP	74.78535	31.26595	13:12:00	D	4.40
804	TARN TARAN	PATTI	S-NPP	74.74817	31.27087	13:12:00	D	6.00
805	TARN TARAN	PATTI	S-NPP	74.54179	31.27157	13:12:00	D	3.50
806	TARN TARAN	PATTI	S-NPP	74.57601	31.27275	13:12:00	D	3.10
807	TARN TARAN	PATTI	TERRA	74.54500	31.27500	11:35:00	D	27.10
808	TARN TARAN	PATTI	AQUA	74.66500	31.28000	13:10:00	D	42.70
809	TARN TARAN	PATTI	S-NPP	74.75752	31.28079	13:12:00	D	3.80
810	TARN TARAN	PATTI	S-NPP	74.78696	31.28245	13:12:00	D	6.10
811	TARN TARAN	PATTI	S-NPP	74.57294	31.28443	13:12:00	D	4.10
812	TARN TARAN	PATTI	S-NPP	74.62704	31.28704	13:12:00	D	7.80
813	TARN TARAN	PATTI	S-NPP	74.57190	31.28832	13:12:00	D	4.10
814	TARN TARAN	PATTI	S-NPP	74.62891	31.28843	13:12:00	D	13.00
815	TARN TARAN	PATTI	S-NPP	74.67133	31.28848	13:12:00	D	4.90
816	TARN TARAN	PATTI	AQUA	74.66900	31.29000	13:10:00	D	32.20
817	TARN TARAN	PATTI	S-NPP	74.82658	31.29012	13:12:00	D	11.60
818	TARN TARAN	PATTI	S-NPP	74.66831	31.29119	13:12:00	D	44.60
819	TARN TARAN	PATTI	S-NPP	74.66454	31.29123	13:12:00	D	26.50
820	TARN TARAN	PATTI	S-NPP	74.70472	31.29898	13:12:00	D	7.00
821	TARN TARAN	PATTI	S-NPP	74.70837	31.29917	13:12:00	D	4.60
822	TARN TARAN	PATTI	S-NPP	74.89503	31.29934	13:12:00	D	2.70

823	TARN TARAN	PATTI	S-NPP	74.84709	31.30216	13:12:00	D	6.30
824	TARN TARAN	PATTI	S-NPP	74.58620	31.30345	13:12:00	D	3.30
825	TARN TARAN	PATTI	S-NPP	74.69388	31.30849	13:12:00	D	2.90
826	TARN TARAN	PATTI	S-NPP	74.77094	31.31161	13:12:00	D	2.90
827	TARN TARAN	PATTI	S-NPP	74.77316	31.31215	13:12:00	D	2.30
828	TARN TARAN	PATTI	S-NPP	74.90881	31.31405	13:12:00	D	5.40
829	TARN TARAN	PATTI	S-NPP	74.91441	31.31513	13:12:00	D	7.10
830	TARN TARAN	PATTI	S-NPP	74.59945	31.32242	13:12:00	D	4.10
831	TARN TARAN	PATTI	TERRA	74.74100	31.32400	11:35:00	D	8.40
832	TARN TARAN	PATTI	S-NPP	74.62255	31.32698	13:12:00	D	8.50
833	TARN TARAN	PATTI	S-NPP	74.76688	31.32700	13:12:00	D	7.30
834	TARN TARAN	PATTI	S-NPP	74.74783	31.33134	13:12:00	D	6.70
835	TARN TARAN	PATTI	S-NPP	74.68101	31.33442	13:12:00	D	4.00
836	TARN TARAN	PATTI	S-NPP	74.62048	31.33474	13:12:00	D	4.10
837	TARN TARAN	PATTI	TERRA	74.76100	31.35100	11:35:00	D	13.20
838	TARN TARAN	PATTI	TERRA	74.77700	31.35900	11:35:00	D	15.80
839	TARN TARAN	PATTI	S-NPP	74.58334	31.36013	13:12:00	D	4.10
840	TARN TARAN	PATTI	S-NPP	74.69205	31.36097	13:12:00	D	10.70
841	TARN TARAN	PATTI	S-NPP	74.67857	31.36647	13:12:00	D	5.20
842	TARN TARAN	PATTI	TERRA	74.77100	31.36900	11:35:00	D	14.10
843	TARN TARAN	PATTI	S-NPP	74.58023	31.37178	13:12:00	D	4.30
844	TARN TARAN	PATTI	TERRA	74.64200	31.37200	11:35:00	D	7.90
845	TARN TARAN	PATTI	S-NPP	74.66976	31.37695	13:12:00	D	9.20
846	TARN TARAN	PATTI	S-NPP	74.60986	31.38937	13:12:00	D	6.60
847	TARN TARAN	PATTI	S-NPP	74.61183	31.39015	13:12:00	D	7.40
848	TARN TARAN	PATTI	S-NPP	74.68959	31.39298	13:12:00	D	3.60
849	TARN TARAN	PATTI	TERRA	74.62600	31.39500	11:35:00	D	8.30
850	TARN TARAN	PATTI	S-NPP	74.67404	31.40622	13:12:00	D	3.10

Details of residue burning events in Haryana on 18-Oct-2020

S. No.	District	Tehsil / Block	Satellite	Longitude	Latitude	Time (IST)	Day / Night	Fire Power (W/m ²)
1	AMBALA	AMBALA	TERRA	76.61000	30.08100	11:35:00	D	17.40
2	AMBALA	AMBALA	S-NPP	76.63419	30.11826	13:12:00	D	4.50
3	AMBALA	AMBALA	AQUA	76.73800	30.21300	13:10:00	D	16.60
4	AMBALA	AMBALA	S-NPP	76.74775	30.21756	13:12:00	D	7.30
5	AMBALA	AMBALA	S-NPP	76.60531	30.23734	13:12:00	D	35.20
6	AMBALA	AMBALA	S-NPP	76.60834	30.23736	13:12:00	D	24.70
7	AMBALA	AMBALA	TERRA	76.87200	30.24000	11:35:00	D	26.70
8	AMBALA	AMBALA	S-NPP	76.58967	30.26074	13:12:00	D	2.40
9	AMBALA	AMBALA	S-NPP	76.76210	30.26110	13:12:00	D	11.60
10	AMBALA	AMBALA	S-NPP	76.76357	30.26268	13:12:00	D	11.30
11	AMBALA	AMBALA	S-NPP	76.87955	30.26346	13:12:00	D	2.20
12	AMBALA	AMBALA	S-NPP	76.62724	30.27136	13:12:00	D	6.10
13	AMBALA	AMBALA	S-NPP	76.82360	30.27204	13:12:00	D	4.50
14	AMBALA	AMBALA	S-NPP	76.82275	30.27560	13:12:00	D	4.50
15	AMBALA	AMBALA	S-NPP	76.73563	30.27620	13:12:00	D	2.80
16	AMBALA	AMBALA	S-NPP	76.78603	30.29282	13:12:00	D	3.10
17	AMBALA	BARARA	S-NPP	76.98693	30.17014	13:12:00	D	2.70
18	AMBALA	BARARA	S-NPP	77.06805	30.24548	13:12:00	D	3.80
19	AMBALA	BARARA	S-NPP	77.13585	30.28322	13:12:00	D	5.90
20	AMBALA	BARARA	S-NPP	77.08540	30.31462	13:12:00	D	5.20
21	AMBALA	NARAYANGARH	S-NPP	77.08435	30.43348	13:12:00	D	2.60
22	FARIDABAD	FARIDABAD	S-NPP	77.39961	28.43344	13:12:00	D	6.10
23	FATEHABAD	FATEHABAD	S-NPP	75.41940	29.46505	13:12:00	D	3.20
24	FATEHABAD	FATEHABAD	S-NPP	75.73334	29.51231	13:12:00	D	5.30
25	FATEHABAD	FATEHABAD	S-NPP	75.46196	29.52364	01:54:00	N	1.50
26	FATEHABAD	FATEHABAD	S-NPP	75.45691	29.52427	01:54:00	N	1.50
27	FATEHABAD	FATEHABAD	S-NPP	75.57587	29.54770	13:12:00	D	3.50
28	FATEHABAD	RATIA	METOP-1	75.37591	29.60720	21:16:00	N	7.00
29	FATEHABAD	RATIA	S-NPP	75.56349	29.67880	13:12:00	D	5.50
30	FATEHABAD	TOHANA	S-NPP	75.86552	29.62246	13:12:00	D	5.20

31	FATEHABAD	TOHANA	S-NPP	75.87452	29.68655	13:12:00	D	8.40
32	FATEHABAD	TOHANA	S-NPP	75.91487	29.74508	13:12:00	D	3.90
33	FATEHABAD	TOHANA	S-NPP	75.77965	29.76963	13:12:00	D	2.50
34	FATEHABAD	TOHANA	S-NPP	75.76005	29.78164	13:12:00	D	1.90
35	HISAR	HANSI	S-NPP	75.96342	29.17228	13:12:00	D	8.90
36	HISAR	HISAR	S-NPP	75.88661	29.41967	13:12:00	D	1.90
37	HISAR	HISAR	S-NPP	75.91114	29.43213	13:12:00	D	1.20
38	HISAR	HISAR	S-NPP	75.94174	29.44177	13:12:00	D	2.40
39	HISAR	HISAR	S-NPP	75.95129	29.44747	13:12:00	D	4.70
40	HISAR	HISAR	S-NPP	75.94257	29.53969	13:12:00	D	2.50
41	HISAR	NARNAUND	S-NPP	76.05949	29.18262	13:12:00	D	2.50
42	HISAR	NARNAUND	S-NPP	76.06576	29.24640	13:12:00	D	5.50
43	JIND	JIND	S-NPP	76.43022	29.51657	13:12:00	D	4.30
44	JIND	JIND	S-NPP	76.43520	29.51748	13:12:00	D	4.30
45	JIND	JULANA	S-NPP	76.37015	29.12821	13:12:00	D	5.60
46	JIND	NARWANA	S-NPP	76.01212	29.54486	13:12:00	D	2.70
47	JIND	NARWANA	S-NPP	76.03104	29.55619	13:12:00	D	3.20
48	JIND	NARWANA	S-NPP	76.13380	29.63387	13:12:00	D	5.60
49	JIND	NARWANA	S-NPP	76.00159	29.67949	13:12:00	D	1.40
50	JIND	NARWANA	S-NPP	76.00433	29.67964	13:12:00	D	3.40
51	JIND	SAFIDON	S-NPP	76.63654	29.41878	13:12:00	D	4.80
52	KAITHAL	GUHLA	S-NPP	76.26666	29.91166	13:12:00	D	2.10
53	KAITHAL	GUHLA	S-NPP	76.21880	29.91433	13:12:00	D	4.00
54	KAITHAL	GUHLA	S-NPP	76.22383	29.91525	13:12:00	D	4.00
55	KAITHAL	GUHLA	S-NPP	76.23712	29.92538	13:12:00	D	4.40
56	KAITHAL	GUHLA	S-NPP	76.28223	29.93366	13:12:00	D	6.50
57	KAITHAL	GUHLA	S-NPP	76.34550	30.10255	13:12:00	D	2.10
58	KAITHAL	GUHLA	AQUA	76.37300	30.11300	13:10:00	D	19.10
59	KAITHAL	GUHLA	S-NPP	76.35997	30.12805	13:12:00	D	3.70
60	KAITHAL	KAITHAL	S-NPP	76.28666	29.58043	13:12:00	D	2.70
61	KAITHAL	KAITHAL	S-NPP	76.53315	29.59167	13:12:00	D	6.20
62	KAITHAL	KAITHAL	S-NPP	76.53228	29.59530	13:12:00	D	6.20
63	KAITHAL	KAITHAL	S-NPP	76.47115	29.61447	13:12:00	D	2.80

64	KAITHAL	KAITHAL	S-NPP	76.59299	29.64058	13:12:00	D	3.60
65	KAITHAL	KAITHAL	S-NPP	76.48128	29.65819	13:12:00	D	3.30
66	KAITHAL	KAITHAL	S-NPP	76.48349	29.66100	13:12:00	D	2.80
67	KAITHAL	KAITHAL	S-NPP	76.70422	29.68341	13:12:00	D	3.00
68	KAITHAL	KAITHAL	S-NPP	76.33790	29.70650	13:12:00	D	2.60
69	KAITHAL	KAITHAL	S-NPP	76.29184	29.77674	13:12:00	D	9.30
70	KAITHAL	KAITHAL	S-NPP	76.35351	29.78055	13:12:00	D	4.80
71	KAITHAL	KAITHAL	S-NPP	76.59152	29.79435	13:12:00	D	2.70
72	KAITHAL	KAITHAL	S-NPP	76.56882	29.84685	13:12:00	D	2.80
73	KAITHAL	KAITHAL	AQUA	76.53200	29.85300	13:10:00	D	19.90
74	KAITHAL	KAITHAL	S-NPP	76.53925	29.86413	13:12:00	D	14.80
75	KAITHAL	KAITHAL	S-NPP	76.50731	29.86968	13:12:00	D	16.20
76	KAITHAL	KAITHAL	S-NPP	76.37368	29.87800	13:12:00	D	17.20
77	KAITHAL	KAITHAL	METOP-1	76.52767	29.87969	21:16:00	N	8.00
78	KAITHAL	KAITHAL	AQUA	76.28000	29.88000	13:10:00	D	19.70
79	KAITHAL	KAITHAL	S-NPP	76.58620	29.88021	13:12:00	D	8.90
80	KAITHAL	KAITHAL	AQUA	76.28400	29.88300	13:10:00	D	21.70
81	KAITHAL	KAITHAL	S-NPP	76.56501	29.88392	13:12:00	D	3.80
82	KAITHAL	KAITHAL	S-NPP	76.28877	29.88512	13:12:00	D	16.00
83	KAITHAL	KAITHAL	S-NPP	76.49716	29.89057	13:12:00	D	1.60
84	KARNAL	ASSANDH	S-NPP	76.56485	29.60890	13:12:00	D	4.10
85	KARNAL	ASSANDH	S-NPP	76.76923	29.61203	13:12:00	D	5.50
86	KARNAL	ASSANDH	S-NPP	76.77105	29.61290	13:12:00	D	7.00
87	KARNAL	ASSANDH	S-NPP	76.65759	29.66744	13:12:00	D	4.00
88	KARNAL	GHARAUNDA	S-NPP	76.98253	29.47791	13:12:00	D	2.50
89	KARNAL	GHARAUNDA	S-NPP	77.04914	29.48621	13:12:00	D	10.70
90	KARNAL	GHARAUNDA	S-NPP	77.02925	29.50863	13:12:00	D	4.40
91	KARNAL	GHARAUNDA	S-NPP	76.92552	29.53922	13:12:00	D	5.10
92	KARNAL	GHARAUNDA	S-NPP	76.98045	29.55667	13:12:00	D	7.00
93	KARNAL	GHARAUNDA	S-NPP	76.92354	29.56871	13:12:00	D	2.20
94	KARNAL	GHARAUNDA	S-NPP	77.08011	29.58956	13:12:00	D	1.80
95	KARNAL	GHARAUNDA	S-NPP	77.04412	29.59790	13:12:00	D	6.00
96	KARNAL	INDRI	S-NPP	77.14554	29.93248	13:12:00	D	2.60

97	KARNAL	INDRI	S-NPP	77.15014	29.93331	13:12:00	D	2.60
98	KARNAL	KARNAL	S-NPP	76.83687	29.57920	13:12:00	D	4.40
99	KARNAL	KARNAL	S-NPP	77.03060	29.61402	13:12:00	D	5.60
100	KARNAL	KARNAL	AQUA	76.81800	29.63100	13:10:00	D	15.80
101	KARNAL	KARNAL	S-NPP	76.76424	29.64169	13:12:00	D	4.10
102	KARNAL	KARNAL	S-NPP	76.96033	29.64235	13:12:00	D	2.80
103	KARNAL	KARNAL	S-NPP	76.76904	29.64257	13:12:00	D	6.70
104	KARNAL	KARNAL	TERRA	76.77400	29.64400	11:35:00	D	12.90
105	KARNAL	KARNAL	S-NPP	76.78340	29.64519	13:12:00	D	1.80
106	KARNAL	KARNAL	S-NPP	76.87645	29.65092	13:12:00	D	5.10
107	KARNAL	KARNAL	AQUA	76.85800	29.65200	13:10:00	D	20.30
108	KARNAL	KARNAL	METOP-1	76.90620	29.66410	21:16:00	N	14.00
109	KARNAL	KARNAL	AQUA	76.70800	29.67600	13:10:00	D	18.10
110	KARNAL	KARNAL	S-NPP	76.71471	29.68154	13:12:00	D	8.40
111	KARNAL	KARNAL	S-NPP	76.90286	29.68557	13:12:00	D	9.70
112	KARNAL	KARNAL	S-NPP	76.88613	29.69374	13:12:00	D	3.30
113	KARNAL	KARNAL	AQUA	76.74800	29.69700	13:10:00	D	21.30
114	KARNAL	KARNAL	AQUA	76.75500	29.69700	13:10:00	D	21.30
115	KARNAL	KARNAL	S-NPP	76.76498	29.70186	13:12:00	D	6.00
116	KARNAL	KARNAL	S-NPP	76.75454	29.70374	13:12:00	D	2.70
117	KARNAL	KARNAL	S-NPP	76.75368	29.70733	13:12:00	D	4.50
118	KARNAL	KARNAL	S-NPP	76.89056	29.71690	13:12:00	D	12.20
119	KARNAL	KARNAL	S-NPP	76.93695	29.72892	13:12:00	D	16.80
120	KARNAL	KARNAL	S-NPP	76.87433	29.73332	13:12:00	D	1.60
121	KARNAL	KARNAL	S-NPP	76.77976	29.73469	13:12:00	D	1.40
122	KARNAL	KARNAL	S-NPP	77.02002	29.75993	13:12:00	D	9.80
123	KARNAL	KARNAL	S-NPP	77.01727	29.76175	13:12:00	D	9.60
124	KARNAL	NILOKHERI	S-NPP	76.86201	29.76466	13:12:00	D	2.40
125	KARNAL	NILOKHERI	S-NPP	76.91755	29.80079	13:12:00	D	2.20
126	KARNAL	NILOKHERI	S-NPP	76.84798	29.80316	13:12:00	D	6.30
127	KARNAL	NILOKHERI	S-NPP	76.84765	29.82548	13:12:00	D	3.80
128	KARNAL	NILOKHERI	S-NPP	76.97363	29.86085	13:12:00	D	2.60
129	KURUKSHETRA	PEHOWA	S-NPP	76.51141	29.90359	13:12:00	D	5.40

130	KURUKSHETRA	PEHOWA	S-NPP	76.53893	29.91625	13:12:00	D	3.50
131	KURUKSHETRA	PEHOWA	S-NPP	76.69238	29.97073	13:12:00	D	7.90
132	KURUKSHETRA	PEHOWA	S-NPP	76.54850	29.98221	13:12:00	D	2.60
133	KURUKSHETRA	PEHOWA	S-NPP	76.53228	30.01688	13:12:00	D	4.40
134	KURUKSHETRA	PEHOWA	AQUA	76.63600	30.02100	13:10:00	D	21.10
135	KURUKSHETRA	PEHOWA	AQUA	76.64300	30.02100	13:10:00	D	33.70
136	KURUKSHETRA	PEHOWA	S-NPP	76.65461	30.02391	13:12:00	D	40.40
137	KURUKSHETRA	PEHOWA	S-NPP	76.65655	30.02477	13:12:00	D	23.40
138	KURUKSHETRA	PEHOWA	AQUA	76.65800	30.02500	13:10:00	D	17.40
139	KURUKSHETRA	PEHOWA	S-NPP	76.52309	30.03407	13:12:00	D	6.00
140	KURUKSHETRA	PEHOWA	S-NPP	76.63868	30.03650	13:12:00	D	4.10
141	KURUKSHETRA	PEHOWA	S-NPP	76.64350	30.03738	13:12:00	D	5.60
142	KURUKSHETRA	PEHOWA	S-NPP	76.46994	30.04321	13:12:00	D	3.80
143	KURUKSHETRA	PEHOWA	S-NPP	76.65363	30.05801	13:12:00	D	2.10
144	KURUKSHETRA	PEHOWA	S-NPP	76.61166	30.06536	13:12:00	D	3.20
145	KURUKSHETRA	PEHOWA	TERRA	76.62000	30.07000	11:35:00	D	11.10
146	KURUKSHETRA	PEHOWA	TERRA	76.60200	30.07400	11:35:00	D	17.50
147	KURUKSHETRA	PEHOWA	S-NPP	76.68121	30.08927	13:12:00	D	7.90
148	KURUKSHETRA	SHAHABAD	S-NPP	76.82141	30.12576	13:12:00	D	8.80
149	KURUKSHETRA	SHAHABAD	S-NPP	76.80517	30.15261	13:12:00	D	8.70
150	KURUKSHETRA	SHAHABAD	S-NPP	76.79755	30.17445	13:12:00	D	4.90
151	KURUKSHETRA	THANESAR	S-NPP	76.72559	29.88664	13:12:00	D	4.70
152	KURUKSHETRA	THANESAR	S-NPP	76.81537	29.90658	13:12:00	D	9.40
153	KURUKSHETRA	THANESAR	S-NPP	76.80672	29.95044	13:12:00	D	5.90
154	KURUKSHETRA	THANESAR	S-NPP	76.78872	29.98448	13:12:00	D	1.90
155	KURUKSHETRA	THANESAR	S-NPP	76.74074	29.99821	13:12:00	D	7.00
156	KURUKSHETRA	THANESAR	S-NPP	76.77496	30.00066	13:12:00	D	5.90
157	KURUKSHETRA	THANESAR	S-NPP	76.98261	30.01578	13:12:00	D	3.50
158	KURUKSHETRA	THANESAR	S-NPP	76.70605	30.01816	13:12:00	D	4.20
159	KURUKSHETRA	THANESAR	TERRA	76.74100	30.02300	11:35:00	D	13.00
160	KURUKSHETRA	THANESAR	S-NPP	76.70827	30.02978	13:12:00	D	2.50
161	KURUKSHETRA	THANESAR	S-NPP	76.86462	30.03911	13:12:00	D	3.60
162	KURUKSHETRA	THANESAR	S-NPP	77.00353	30.07124	13:12:00	D	4.50

163	KURUKSHETRA	THANESAR	S-NPP	76.75708	30.08434	13:12:00	D	7.10
164	PALWAL	HODAL	AQUA	77.47800	27.90100	13:10:00	D	75.00
165	PALWAL	HODAL	S-NPP	77.46123	27.95163	13:12:00	D	3.60
166	PALWAL	HODAL	S-NPP	77.51757	27.95792	13:12:00	D	3.60
167	PALWAL	HODAL	S-NPP	77.52219	27.95874	13:12:00	D	3.60
168	PALWAL	PALWAL	S-NPP	77.35370	28.19234	13:12:00	D	9.30
169	PALWAL	PALWAL	AQUA	77.34000	28.19300	13:10:00	D	13.90
170	PALWAL	PALWAL	S-NPP	77.35289	28.19592	13:12:00	D	9.30
171	PALWAL	PALWAL	S-NPP	77.34497	28.20940	13:12:00	D	4.70
172	PANCHKULA	PANCHKULA	S-NPP	77.00773	30.56215	13:12:00	D	2.00
173	PANCHKULA	PANCHKULA	S-NPP	76.93710	30.57526	13:12:00	D	1.80
174	PANCHKULA	PANCHKULA	S-NPP	76.97041	30.57752	13:12:00	D	3.70
175	ROHTAK	ROHTAK	S-NPP	76.54625	28.93522	13:12:00	D	3.70
176	SIRSA	SIRSA	S-NPP	75.13426	29.70550	13:12:00	D	7.60
177	SIRSA	SIRSA	S-NPP	75.17115	29.72485	13:12:00	D	8.50
178	SIRSA	SIRSA	S-NPP	75.20490	29.75571	13:12:00	D	4.10
179	SIRSA	SIRSA	S-NPP	75.06226	29.76837	13:12:00	D	4.80
180	SIRSA	SIRSA	S-NPP	75.15749	29.77069	13:12:00	D	9.70
181	SIRSA	SIRSA	S-NPP	75.20911	29.80110	13:12:00	D	5.10
182	YAMUNANAGAR	CHHACHHRAULII	S-NPP	77.47348	30.28841	13:12:00	D	2.50
183	YAMUNANAGAR	JAGADHRI	S-NPP	77.14320	29.98352	13:12:00	D	3.40
184	YAMUNANAGAR	JAGADHRI	S-NPP	77.10277	30.01893	13:12:00	D	9.10
185	YAMUNANAGAR	JAGADHRI	S-NPP	77.41825	30.12958	13:12:00	D	1.70
186	YAMUNANAGAR	JAGADHRI	S-NPP	77.14280	30.18306	13:12:00	D	3.10
187	YAMUNANAGAR	JAGADHRI	S-NPP	77.12654	30.19118	13:12:00	D	4.00
188	YAMUNANAGAR	JAGADHRI	S-NPP	77.11617	30.21502	13:12:00	D	3.70
189	YAMUNANAGAR	JAGADHRI	S-NPP	77.22560	30.21594	13:12:00	D	2.50
190	YAMUNANAGAR	JAGADHRI	S-NPP	77.13914	30.21906	13:12:00	D	1.50
191	YAMUNANAGAR	JAGADHRI	S-NPP	77.27249	30.26731	13:12:00	D	3.70
192	YAMUNANAGAR	JAGADHRI	S-NPP	77.28365	30.28021	13:12:00	D	2.50
193	YAMUNANAGAR	JAGADHRI	S-NPP	77.32111	30.30138	13:12:00	D	2.30
194	YAMUNANAGAR	JAGADHRI	S-NPP	77.22174	30.34927	13:12:00	D	3.00
195	YAMUNANAGAR	JAGADHRI	S-NPP	77.38838	30.37477	13:12:00	D	2.70

196	YAMUNANAGAR	JAGADHRI	S-NPP	77.38952	30.37551	13:12:00	D	2.20
197	YAMUNANAGAR	JAGADHRI	S-NPP	77.32355	30.41823	13:12:00	D	2.10

Details of residue burning events in Uttar Pradesh on 18-Oct-2020

S. No.	District	Tehsil / Block	Satellite	Longitude	Latitude	Time (IST)	Day / Night	Fire Power (W/m ²)
1	AGRA	KURAU LI	S-NPP	77.69308	27.06548	13:12:00	D	4.50
2	ALIGARH	GABHANA	S-NPP	78.10178	28.10361	13:12:00	D	2.40
3	ALIGARH	KOL	S-NPP	78.25227	27.70749	01:54:00	N	0.70
4	ALIGARH	KOL	S-NPP	78.25290	27.71081	01:54:00	N	0.70
5	ALIGARH	KOL	S-NPP	78.34782	27.74994	01:54:00	N	0.50
6	ALIGARH	KOL	S-NPP	78.18542	27.87932	01:54:00	N	1.10
7	ALIGARH	KOL	S-NPP	78.18607	27.88264	01:54:00	N	1.10
8	BAHRAICH	BAHRAICH	S-NPP	81.64838	27.66717	01:54:00	N	0.80
9	BAHRAICH	NANPARA	S-NPP	81.57771	27.77431	01:54:00	N	0.60
10	BAHRAICH	NANPARA	S-NPP	81.46815	27.96500	01:54:00	N	1.00
11	BAHRAICH	NANPARA	METOP-2	81.40324	28.03964	20:01:00	N	9.00
12	BAREILLY	AONLA	S-NPP	79.31231	28.21528	13:12:00	D	2.60
13	BAREILLY	BAREILY	AQUA	79.40200	28.58100	13:10:00	D	10.80
14	BAREILLY	BAREILY	S-NPP	79.40376	28.58406	13:12:00	D	5.20
15	BAREILLY	BAREILY	S-NPP	79.40306	28.58741	13:12:00	D	2.00
16	BAREILLY	MIRGANJ	S-NPP	79.27347	28.52813	13:12:00	D	1.90
17	BASTI	HARRAIYA	S-NPP	82.37624	26.80907	01:54:00	N	0.80
18	BASTI	HARRAIYA	S-NPP	82.37380	26.81017	01:54:00	N	0.90
19	BIJNOR	BIJNOR	S-NPP	78.17167	29.48308	13:12:00	D	2.50
20	BULANDSAHAR	BULANDSHAHR	S-NPP	77.78844	28.36704	01:54:00	N	0.40
21	ETAH	JALESAR	S-NPP	78.38634	27.47062	01:54:00	N	1.20
22	FATEHPUR	KHAGA	S-NPP	81.22888	25.79835	13:12:00	D	2.70
23	GORAKHPUR	KHAJNI	S-NPP	83.21350	26.56893	13:12:00	D	2.70
24	HARDOI	HARDOI	S-NPP	80.32458	27.41205	13:12:00	D	4.30
25	HARDOI	SANDILA	S-NPP	80.31151	27.10962	01:54:00	N	0.30
26	JALAUN	JALAUN	S-NPP	79.26366	26.05879	01:54:00	N	0.50

27	JHANSI	JHANSI	S-NPP	78.46580	25.48274	13:12:00	D	2.40
28	JHANSI	JHANSI	S-NPP	78.60651	25.52915	13:12:00	D	3.60
29	KANPUR	GHATAMPUR	S-NPP	80.04235	26.23459	01:54:00	N	1.10
30	KANPUR	KANPUR NAGAR	S-NPP	80.45539	26.30101	13:12:00	D	1.60
31	KANPUR DEHAT	SIKANDRA	S-NPP	79.62940	26.40666	13:12:00	D	1.70
32	KAUSHAMBI	SIRATHU	S-NPP	81.23479	25.59963	13:06:00	D	1.60
33	KHERI	MOHMADI	S-NPP	80.28046	27.98403	01:54:00	N	0.60
34	MAINPURI	BHOGAON	S-NPP	79.28193	27.21600	01:54:00	N	1.40
35	MAINPURI	MAINPURI	S-NPP	78.94001	27.13101	01:54:00	N	0.80
36	MATHURA	CHHATA	S-NPP	77.48255	27.89966	13:12:00	D	7.60
37	MATHURA	CHHATA	S-NPP	77.48176	27.90323	13:12:00	D	51.90
38	MATHURA	MAT	S-NPP	77.74725	27.72779	01:54:00	N	0.50
39	MATHURA	MATHURA	S-NPP	77.49007	27.54904	01:54:00	N	1.50
40	MORADABAD	MORADABAD	S-NPP	78.83947	28.84825	13:12:00	D	1.80
41	PRATAPGARH	KUNDA	S-NPP	81.71844	25.82560	13:12:00	D	3.20
42	RAMPUR	BILASPUR	S-NPP	79.28518	28.78133	01:54:00	N	0.70
43	RAMPUR	BILASPUR	S-NPP	79.27437	28.79050	13:12:00	D	2.40
44	RAMPUR	BILASPUR	AQUA	79.28700	28.79300	13:10:00	D	16.50
45	RAMPUR	BILASPUR	S-NPP	79.31285	28.88526	01:54:00	N	1.00
46	RAMPUR	SUAR	S-NPP	79.15649	28.89351	13:12:00	D	2.50
47	RAMPUR	SUAR	S-NPP	79.18576	28.98297	01:54:00	N	0.50
48	RAMPUR	SUAR	S-NPP	79.13725	29.02695	13:12:00	D	4.30
49	SAMBHAL	GUNNAUR	S-NPP	78.55264	28.08414	13:12:00	D	2.80
50	SHAHJAHANPUR	PUWANYA	S-NPP	80.15408	28.03254	13:12:00	D	2.50
51	SHAHJAHANPUR	PUWANYA	S-NPP	80.15209	28.13409	01:54:00	N	0.40
52	SHAHJAHANPUR	SHAHJAHANPUR	S-NPP	79.81973	27.95287	13:12:00	D	2.80
53	SHAHJAHANPUR	TILHAR	METOP-1	79.79207	28.12498	21:16:00	N	9.00
54	SHARANPUR	BEHAT	S-NPP	77.71539	30.05809	13:12:00	D	4.10
55	SHARANPUR	NAKUR	S-NPP	77.21370	29.83906	13:12:00	D	2.50
56	SHARANPUR	NAKUR	S-NPP	77.36347	29.87698	01:54:00	N	0.70
57	SHARANPUR	RAMPUR MANIHARRAN	S-NPP	77.44643	29.85487	13:12:00	D	1.50
58	SHARANPUR	SHARANPUR	S-NPP	77.44378	30.05433	13:12:00	D	22.30
59	SHARANPUR	SHARANPUR	S-NPP	77.44492	30.05450	13:12:00	D	26.30
60	SHRAWASTI	BHINGA	S-NPP	81.69166	27.79013	01:54:00	N	0.70

61	SHRAWASTI	BHINGA	S-NPP	81.65228	27.83777	01:54:00	N	2.80
62	SITAPUR	LAHARPUR	S-NPP	80.85769	27.62820	01:54:00	N	0.80
63	SITAPUR	MAHMUDABAD	S-NPP	81.16031	27.28103	01:54:00	N	0.60
64	UNNAO	HASANGANJ	S-NPP	80.43548	26.92702	01:54:00	N	0.50

The study used images received from following Satellites at IARI Satellite Ground Station

S. No.	Satellite Name	Sensor	Resolution (meter)	Day / Night Passes
1.	Suomi NPP	VIIRS	375 / 750	Both
2.	Terra	MODIS	1000	Both
3.	Aqua	MODIS	1000	Both
4.	NOAA – 18	AVHRR	1000	Night
5.	NOAA – 19	AVHRR	1000	Night
6.	Metop - 1	AVHRR	1000	Night
7.	Metop - 2	AVHRR	1000	Night

Study Team

ICAR – HQ	Dr K. Alagusundaram	DDG (AG. ENGG.)	ddgengg@icar.org.in
	Dr S. Bhasker	ADG (NRM)	adgagroandaf@gmail.com
	Dr K.K. Singh	ADG (AG. ENGG)	kanchansingh044@gmail.com
ICAR - IARI	Dr V.K. Sehgal	Professor & Nodal Scientist	iaricreams@gmail.com
	Dr Rajkumar Dhakar	Scientist	raidhakar.iari@gmail.com
	Mr Rakeswer Verma	Chief Technical Officer	rakeshwar.verma@icar.gov.in
	Mr Mohd Jahangir	Lab Assistant (KRISHI)	mjahangir198@gmail.com
ICAR - ATARI	Dr Rajbir Singh	Director ATARI (Zone-I) Ludhiana	rajbirsingh.zpd@gmail.com
	Dr S.K. Singh	Director ATARI (Zone-II) Jodhpur	sushilsinghiipr@yahoo.co.in
	Dr Atar Singh	Director ATARI (Zone-III) Kanpur	zpdicarkanpur@gmail.com
ICAR - IASRI	Dr Rajender Parsad	Director IASRI	rajender.parsad@icar.gov.in

Softcopy of this report and latest statistics can be seen on <http://creams.iari.res.in>

GIS Maps of fire events can be visualized online on ICAR KRISHI Geoportal website: <http://geoportal.icar.gov.in:8080/geoexplorer/composer/>

(Part of KRISHI Portal: <https://krishi.icar.gov.in> initiative)
