



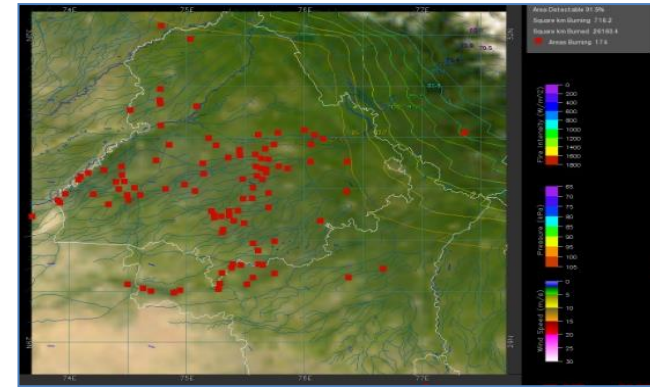
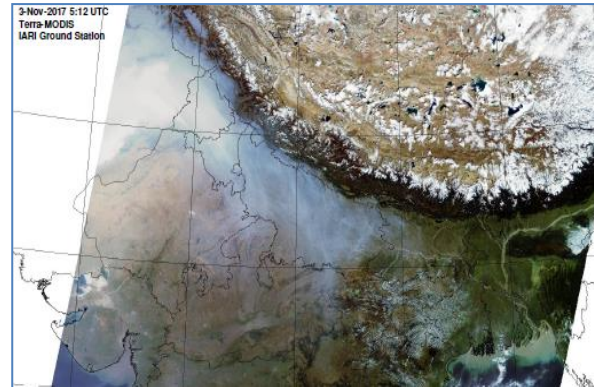
**Bulletin
No. 42**

**Events Date:
26-Oct-2021**

**Issued on:
26-Oct-2021**



MONITORING PADDY RESIDUE BURNING IN INDIA USING SATELLITE REMOTE SENSING DURING 2021



Prepared by:

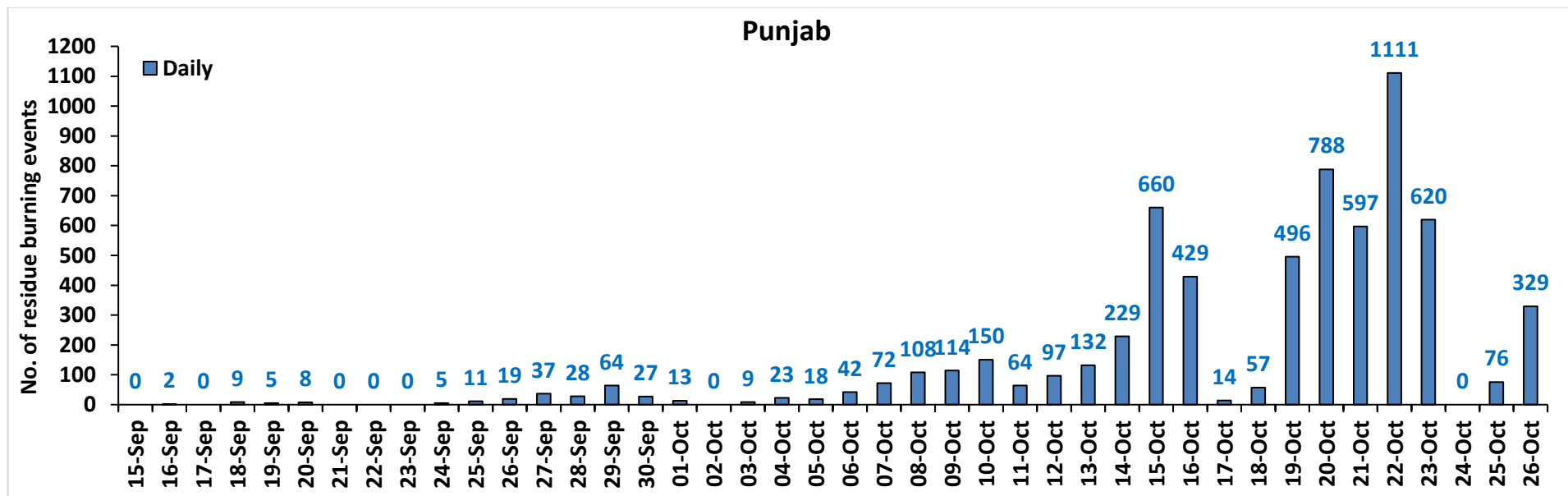
**Consortium for Research on Agroecosystem Monitoring and Modeling from Space (CREAMS) Laboratory,
Division of Agricultural Physics, ICAR – Indian Agricultural Research Institute, New Delhi – 110012**

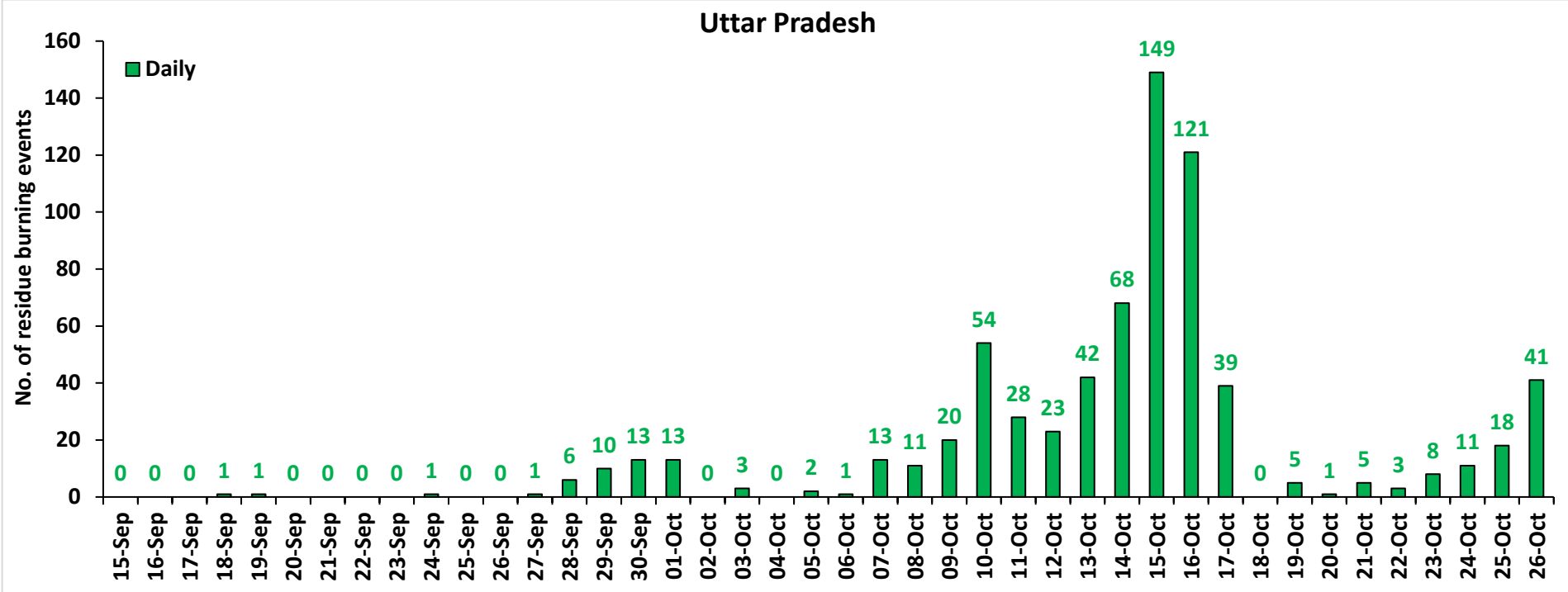
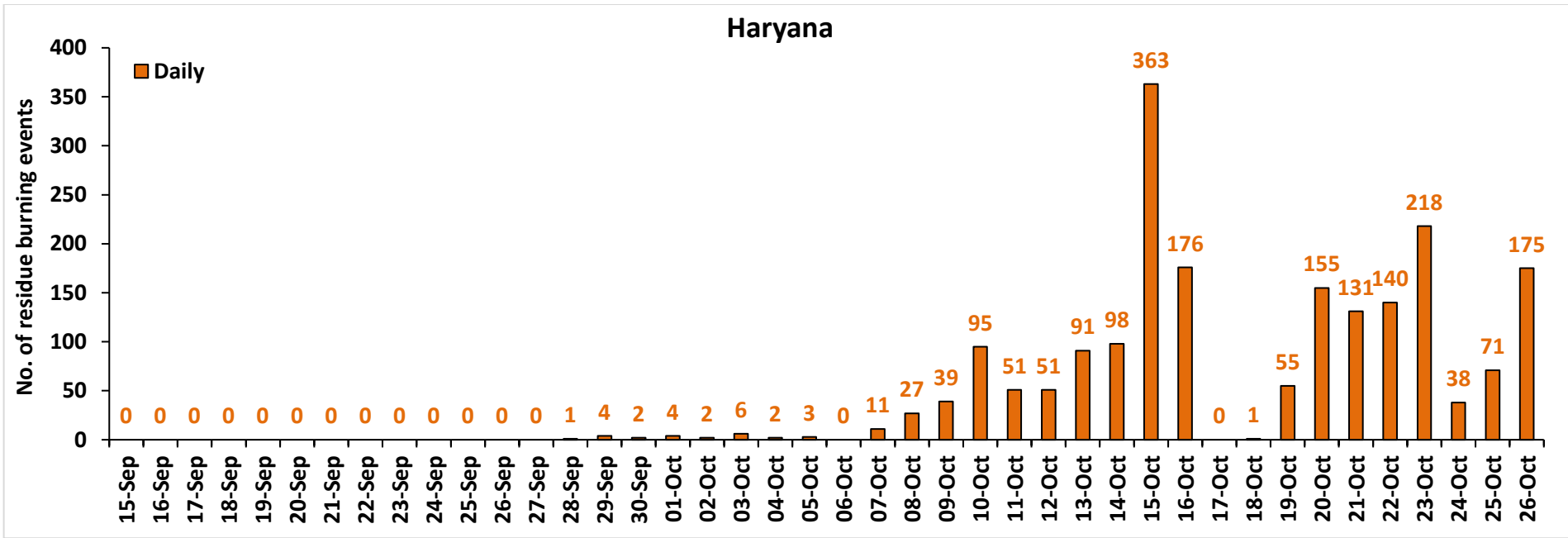
<http://creams.iari.res.in>

Highlights for 26-October-2021

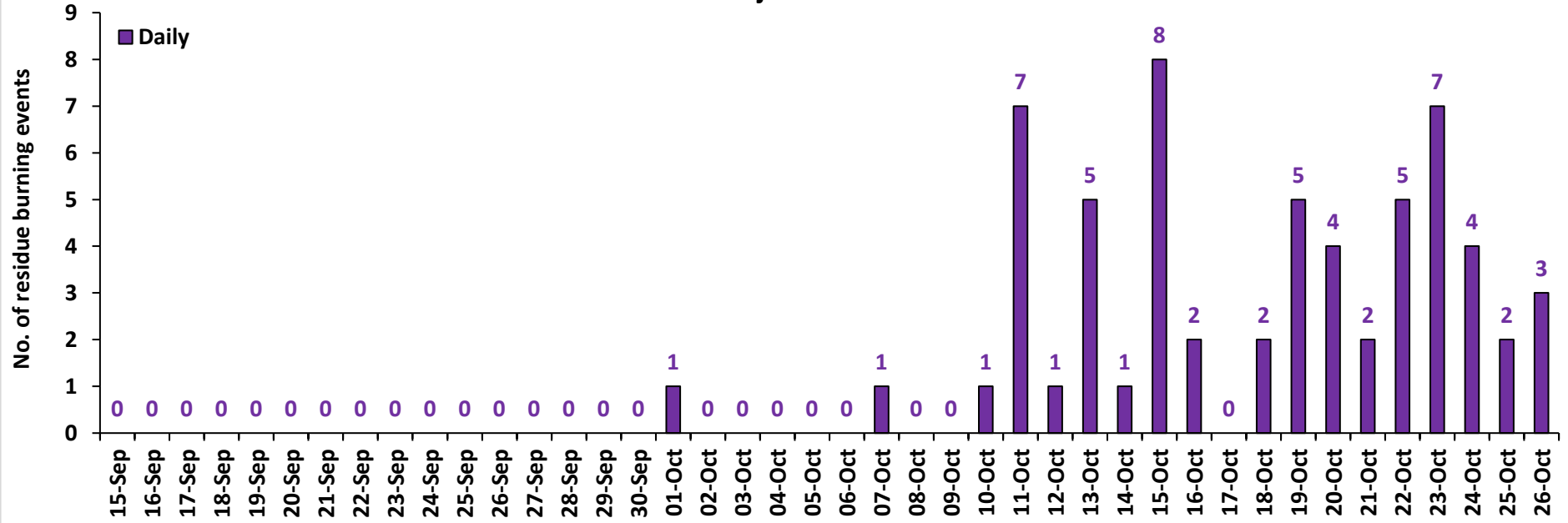
- The active fire events due to rice residue burning were monitored using satellite remote sensing, following the new "Standard Protocol for Estimation of Crop Residue Burning Fire Events using Satellite Data".
- Satellites detected **603** residue burning events in the six study States on 26-Oct-2021.
- The state wise events detected on 26-Oct-2021 were **329** in Punjab, **175** in Haryana, **41** in UP, **0** in Delhi, **3** in Rajasthan and **55** in MP.
- Detection of burning events by satellites was hampered due to scattered clouds over Madhya Pradesh.
- The number of events has increased from **227** on 25-Oct-2021 to **603** on 26-Oct-2021 in the six study states.
- Total **9592** burning events were detected in the six states between 15-Sept-2021 and 26-Oct-2021, which are distributed as **6463**, **2010**, **712**, **0**, **61** and **346** in Punjab, Haryana, UP, Delhi, Rajasthan and MP, respectively.
- Overall, the total burning events recorded in the six states are **58.3%** less than in 2020 till date. Punjab recorded **64.7%** reduction, Haryana recorded **8.7%** increase, UP recorded **12.7%** reduction, Delhi recorded **100%** reduction, Rajasthan recorded **87.4%** reduction and MP recorded **76.9%** reduction, in the current season than in 2020.

Temporal distribution of rice residue burning events for the study States in 2021

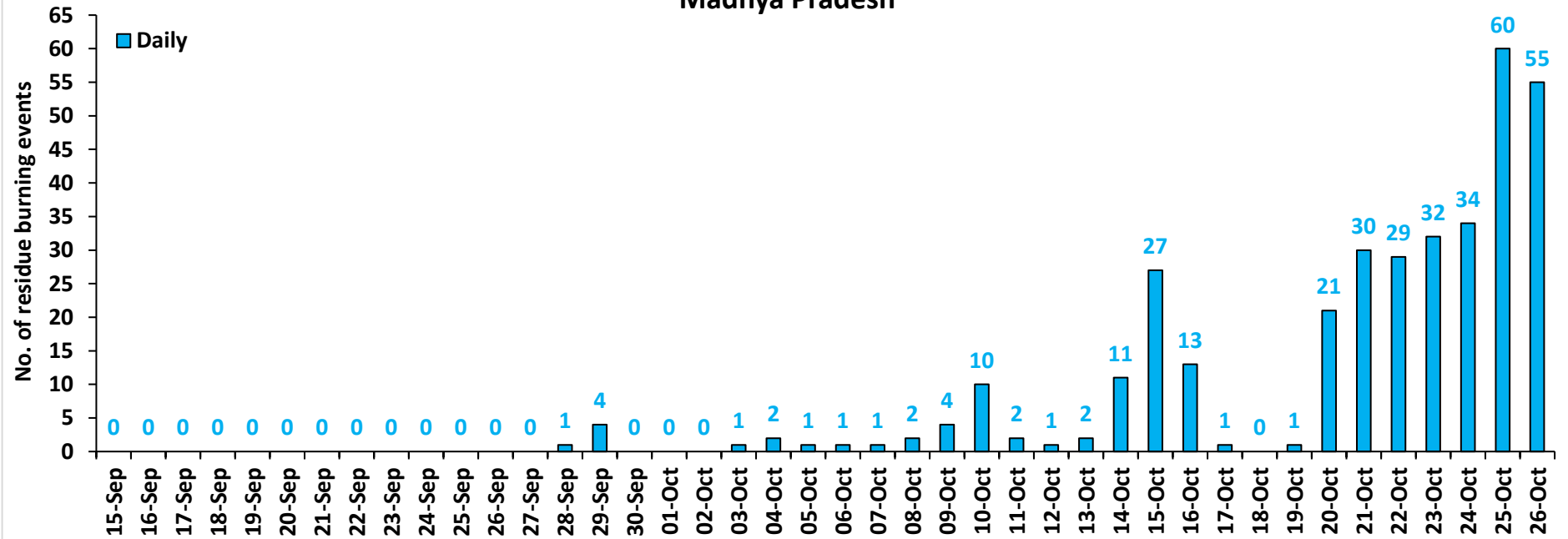




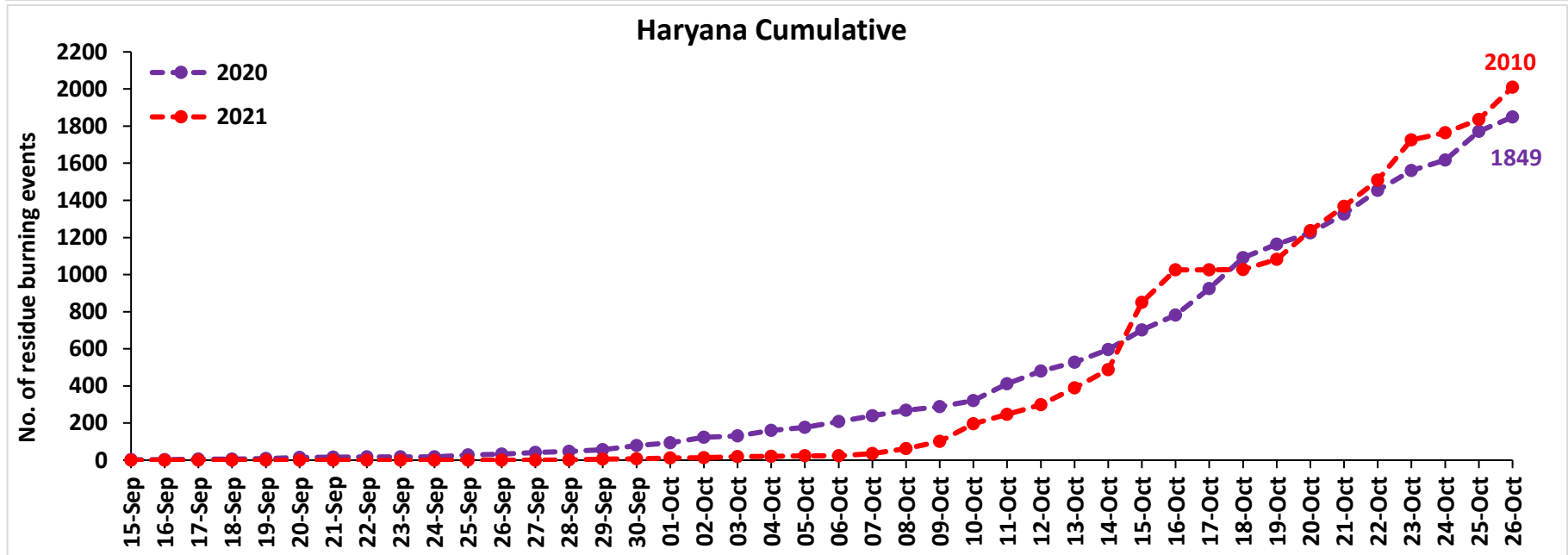
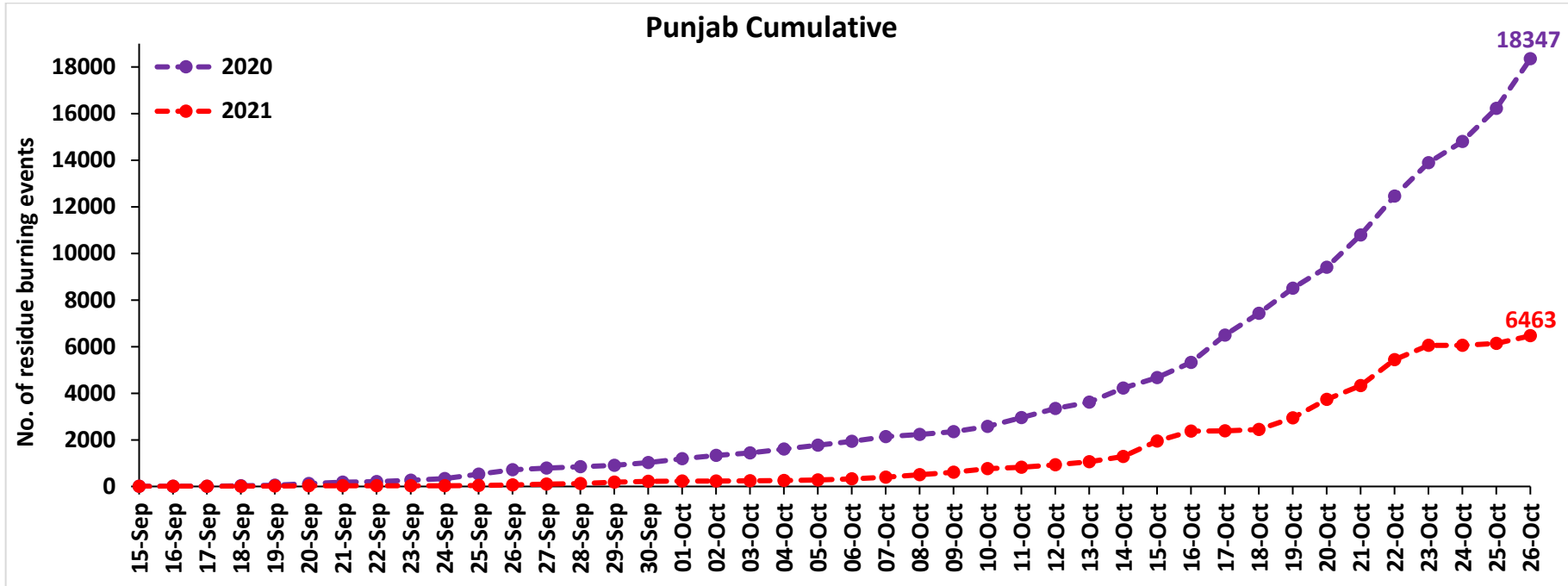
Rajasthan

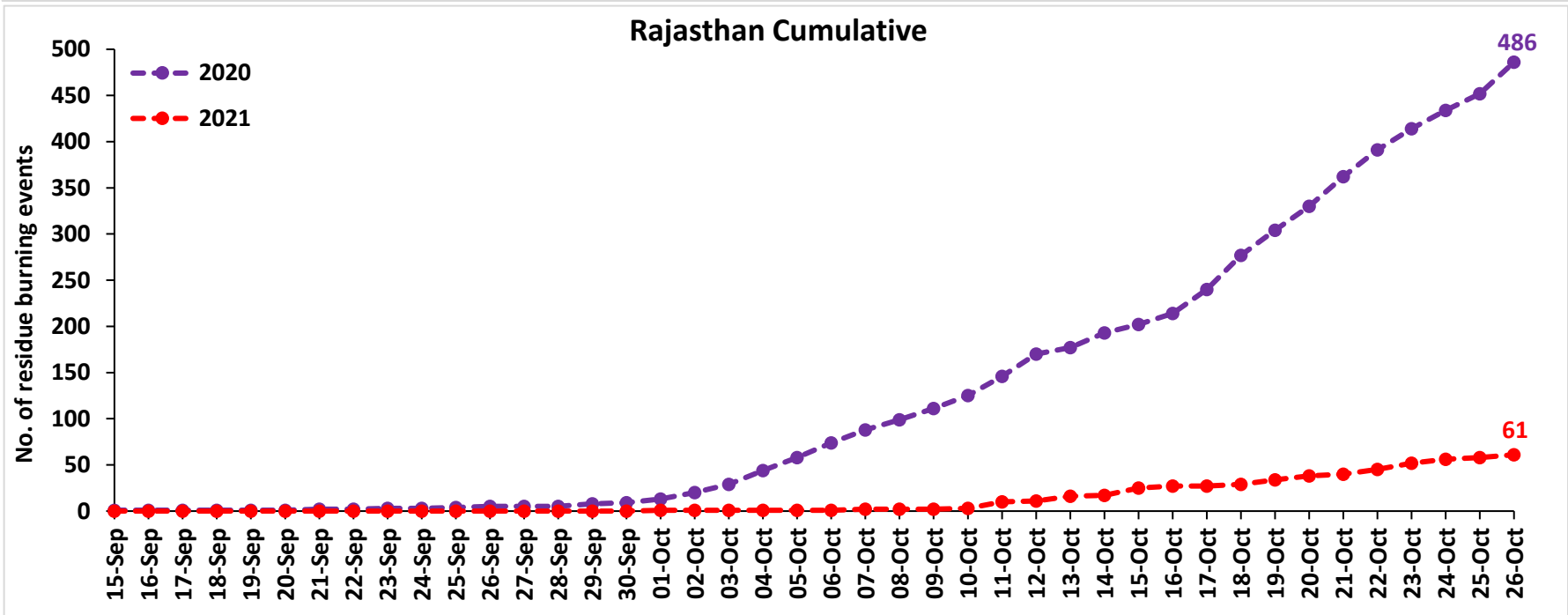
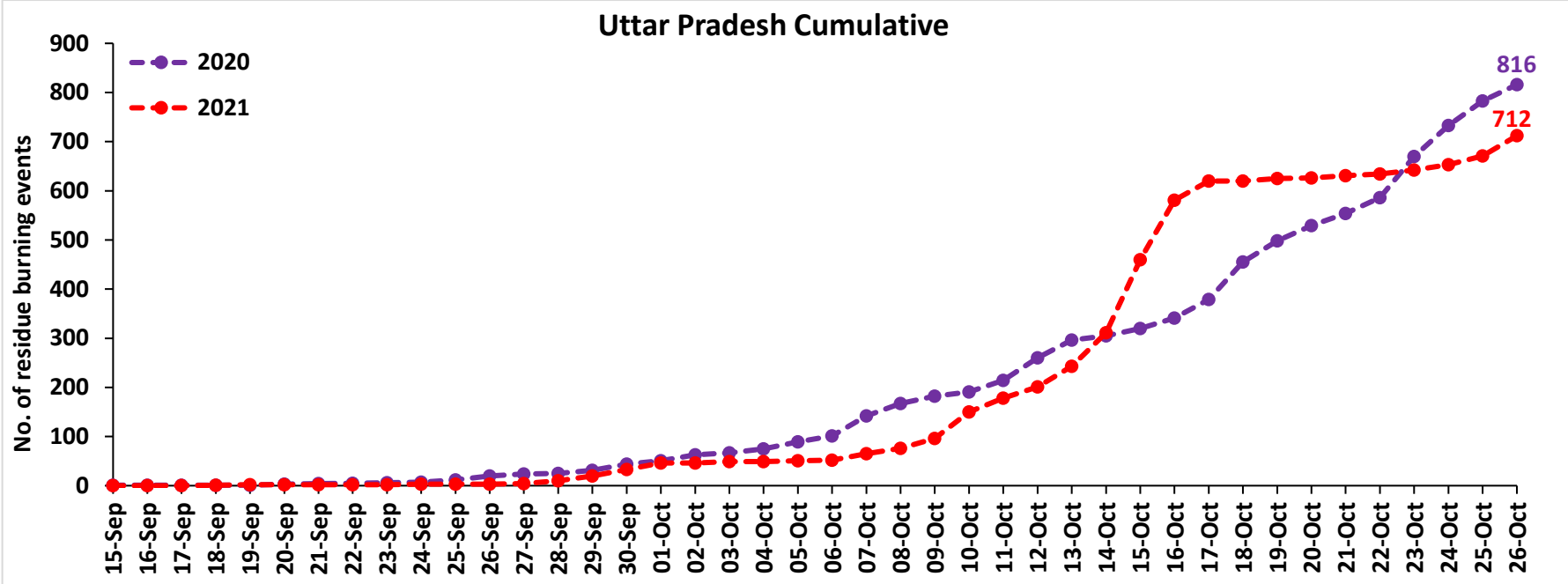


Madhya Pradesh

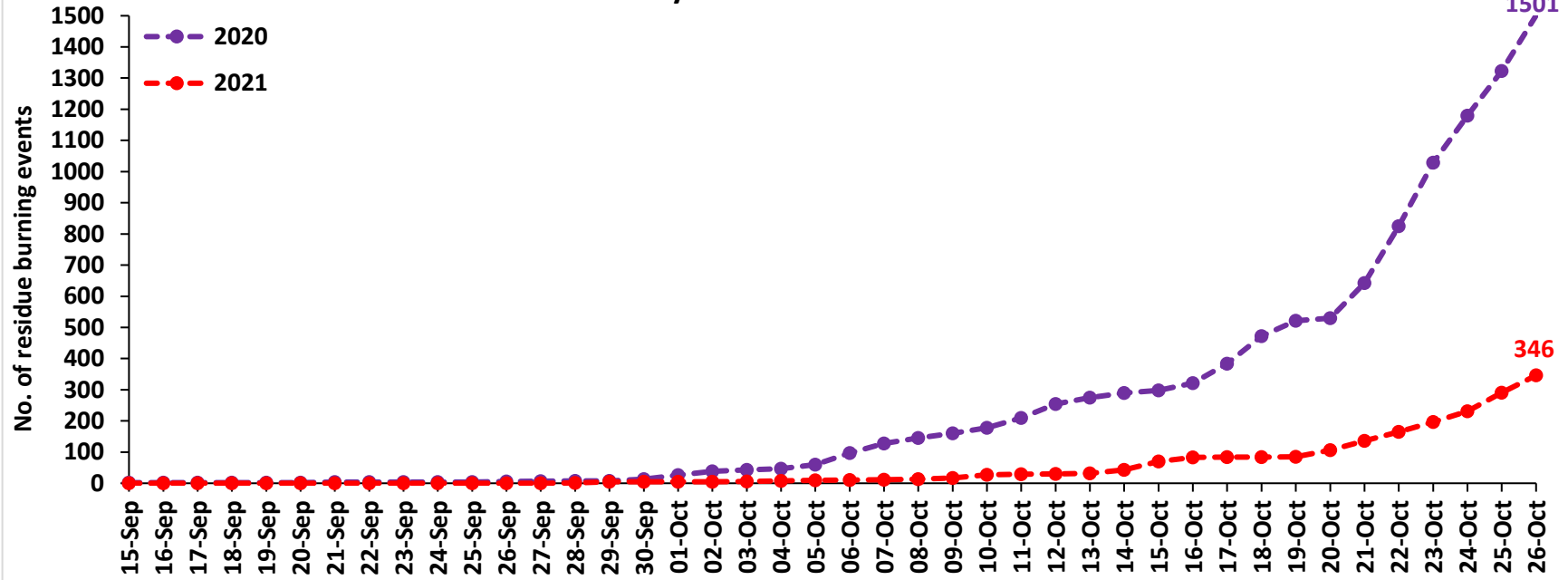


Comparison of residue burning events in current year (2021) with previous year (2020) for the study States

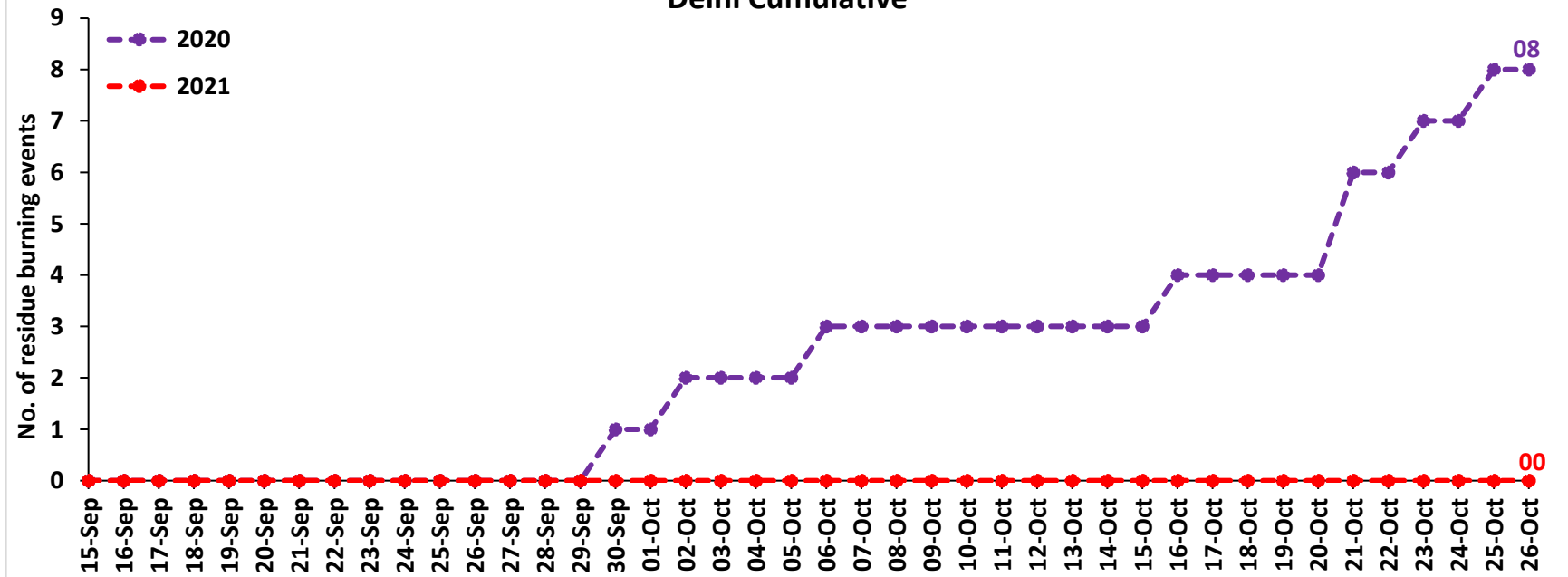




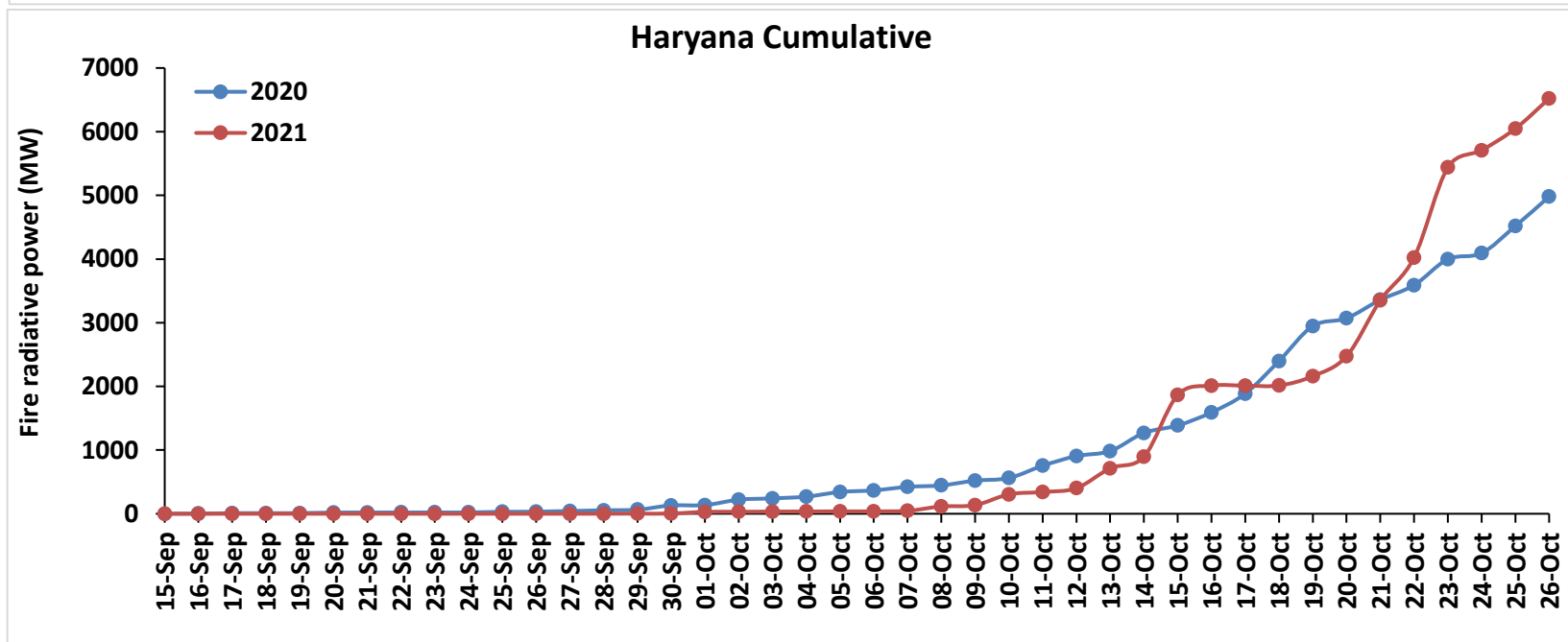
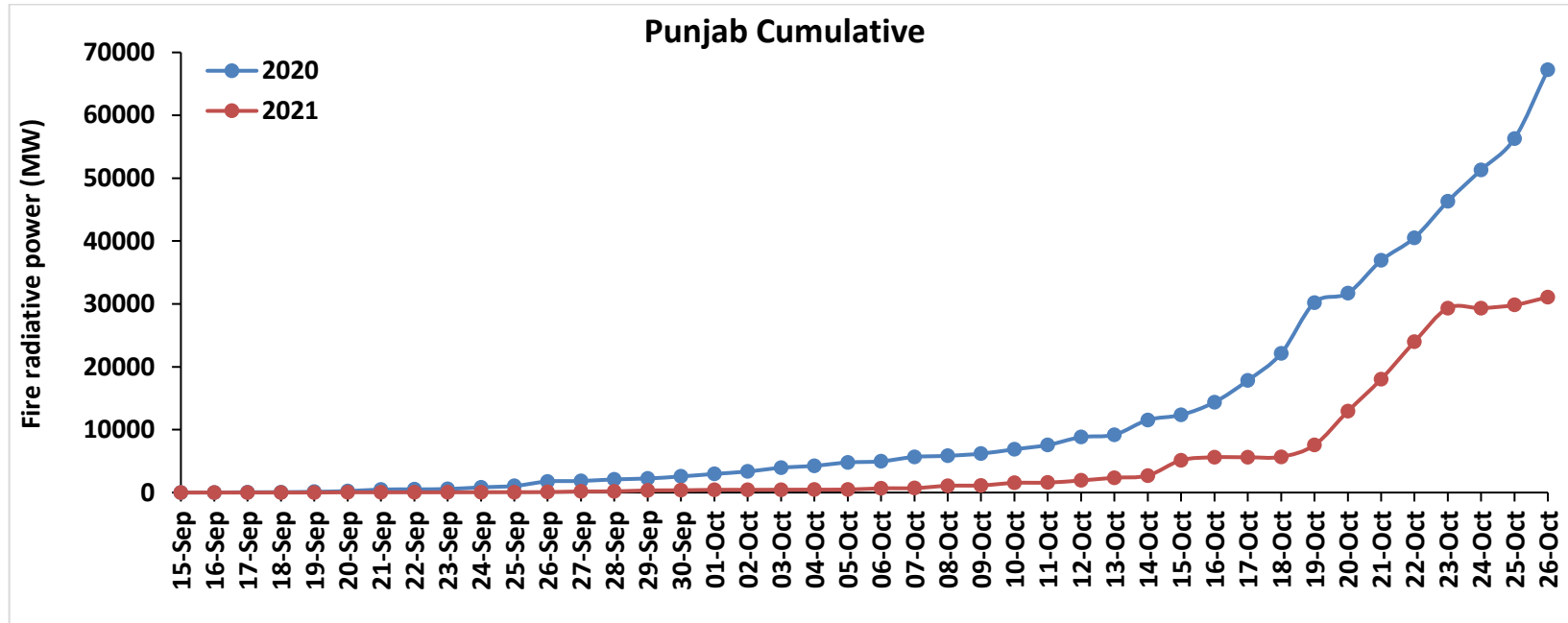
Madhya Pradesh Cumulative

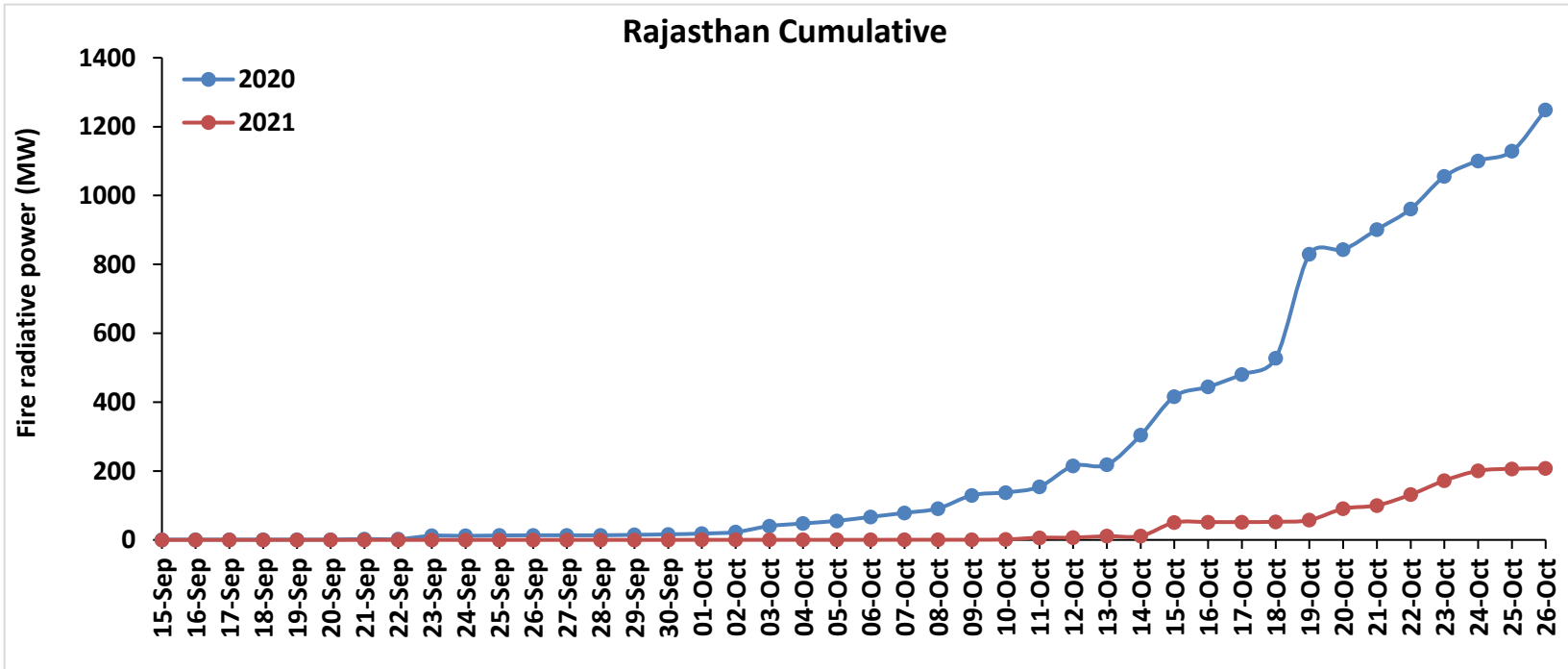
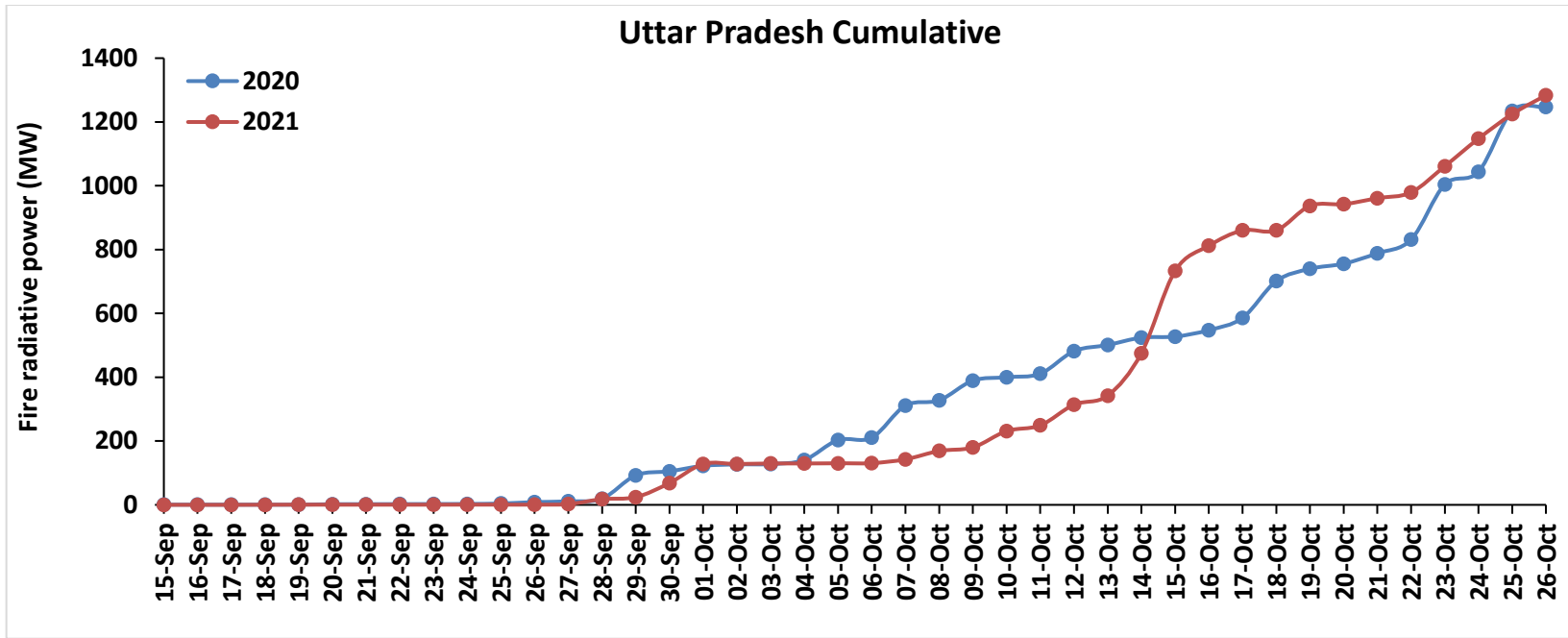


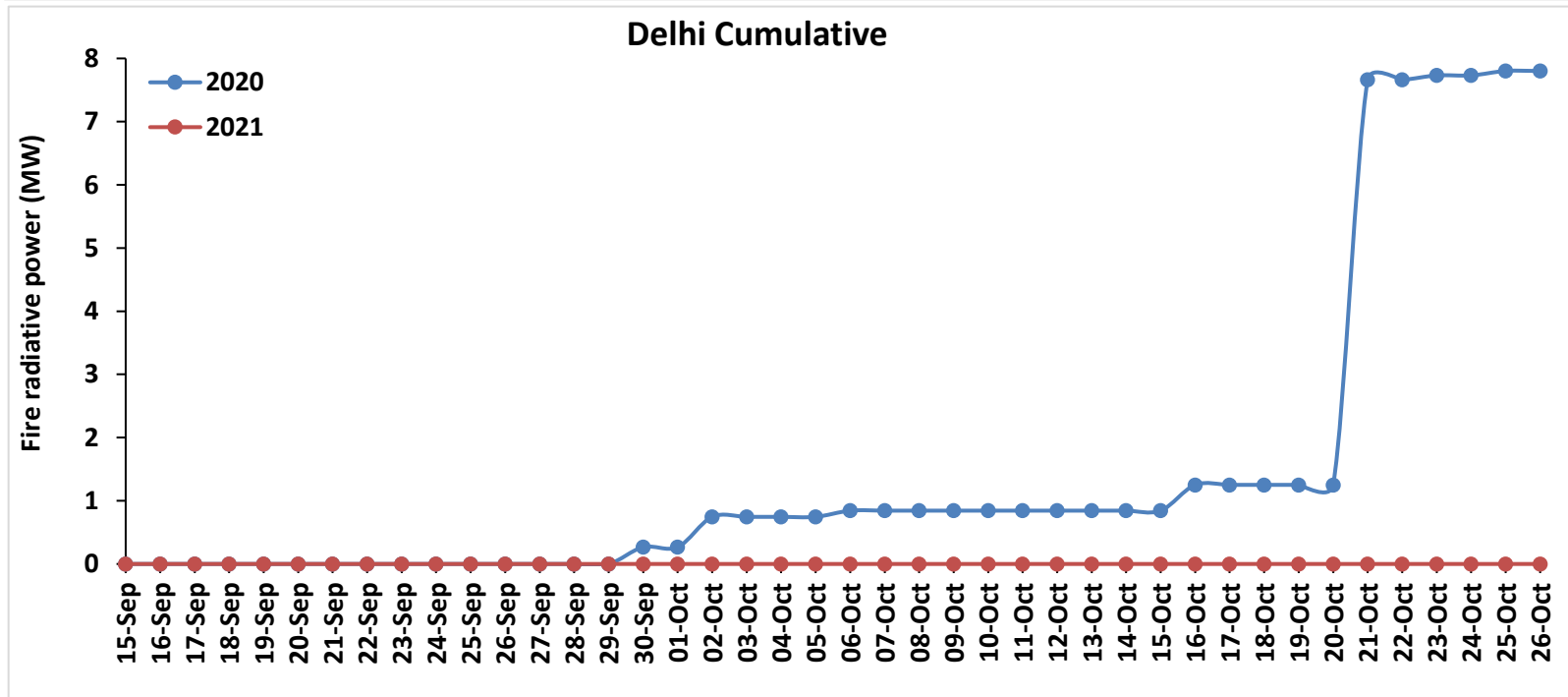
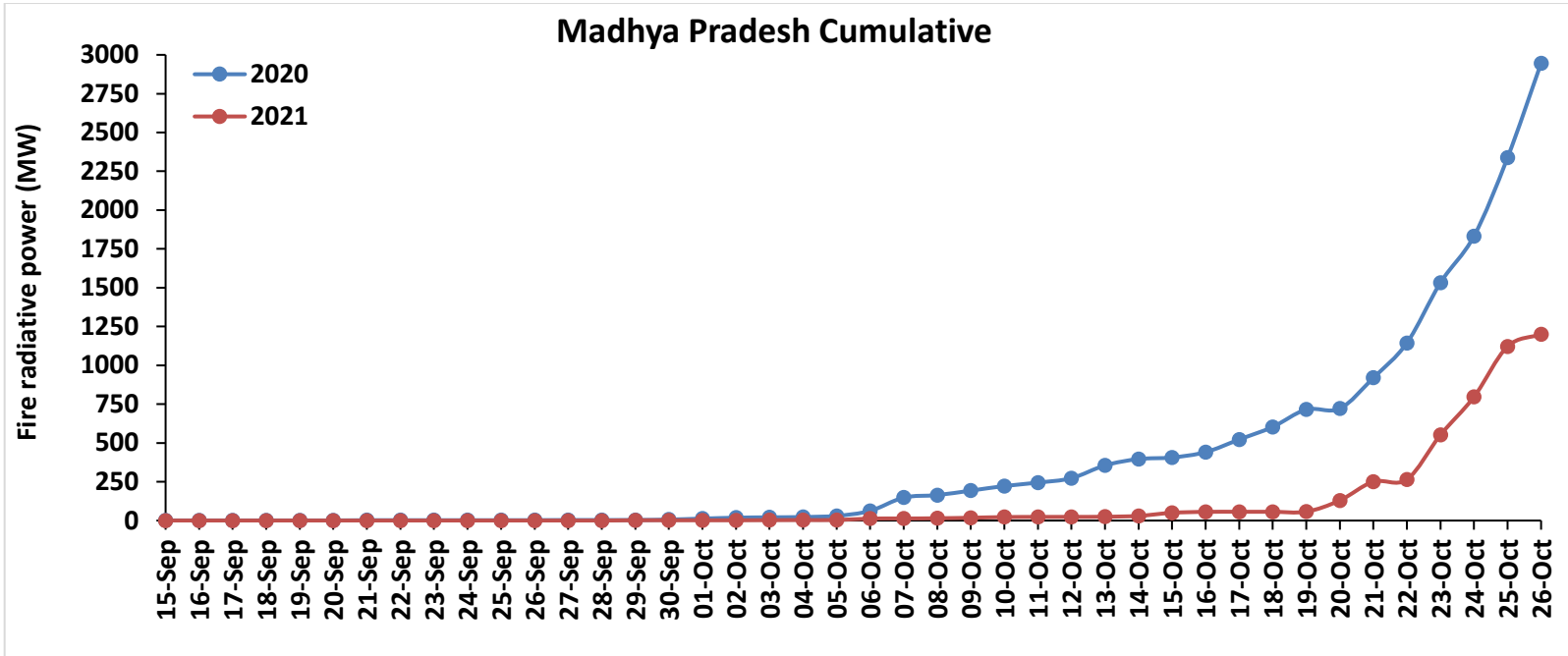
Delhi Cumulative



Comparison of residue burning fire power in current year (2021) with previous year (2020) for the study States

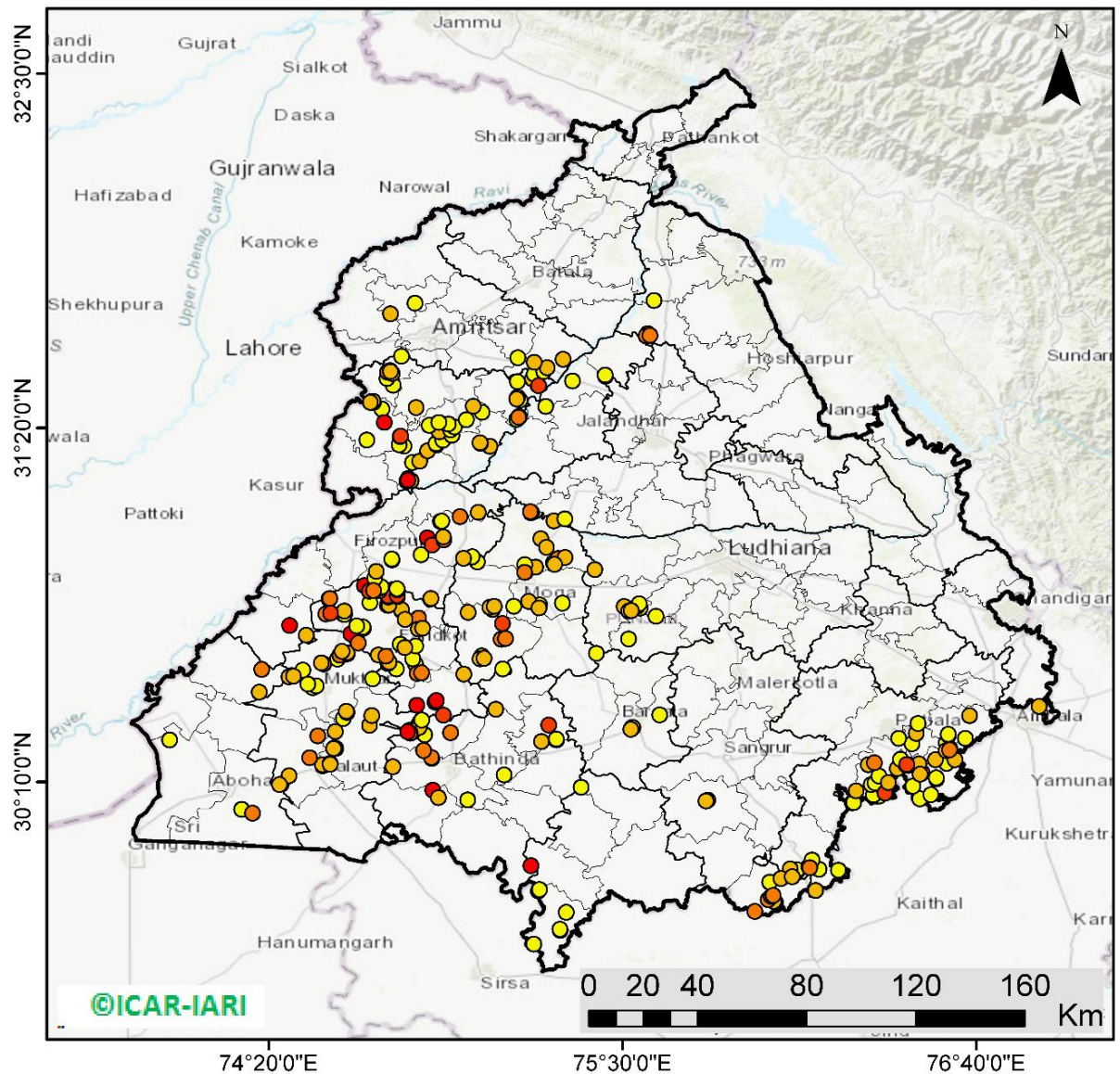






Punjab

RICE RESIDUE BURNING IN PUNJAB



329 burning events detected in Punjab on 26th October 2021

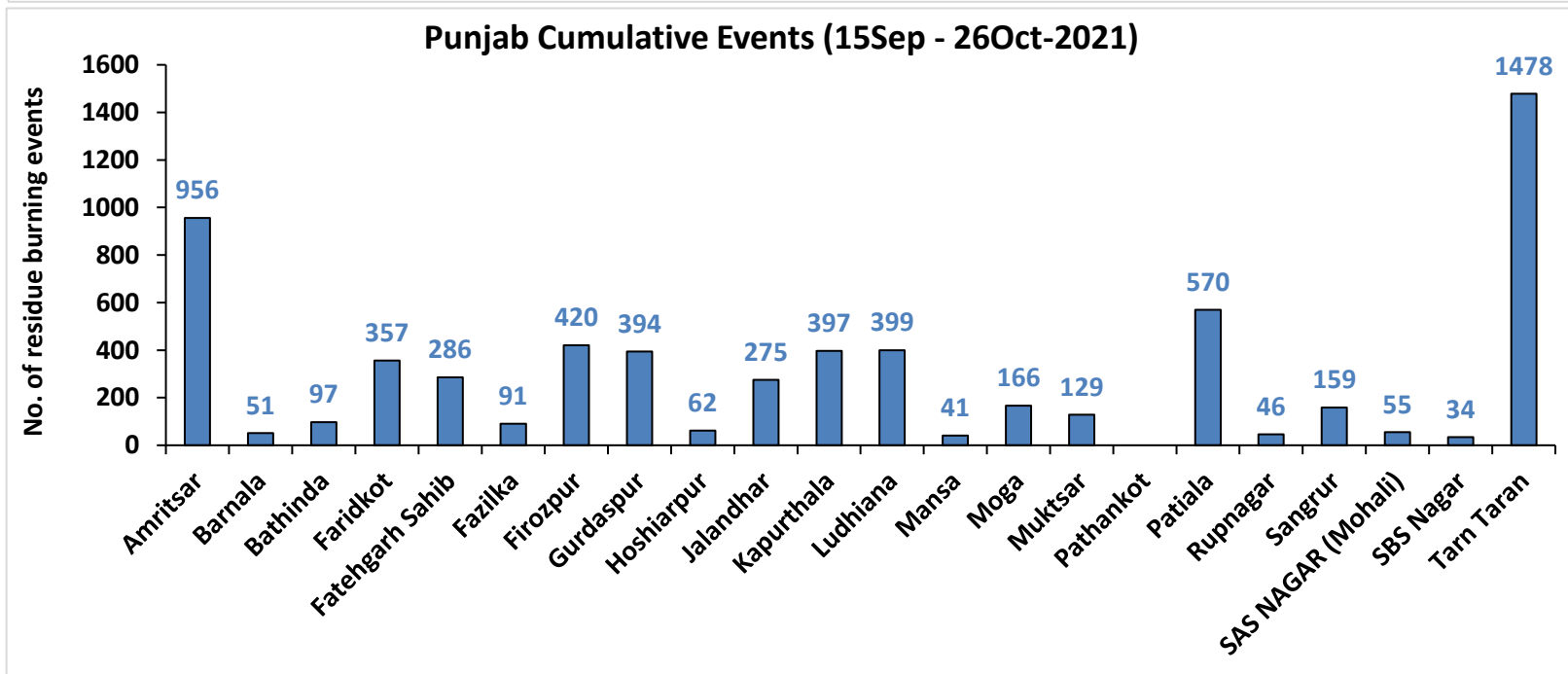
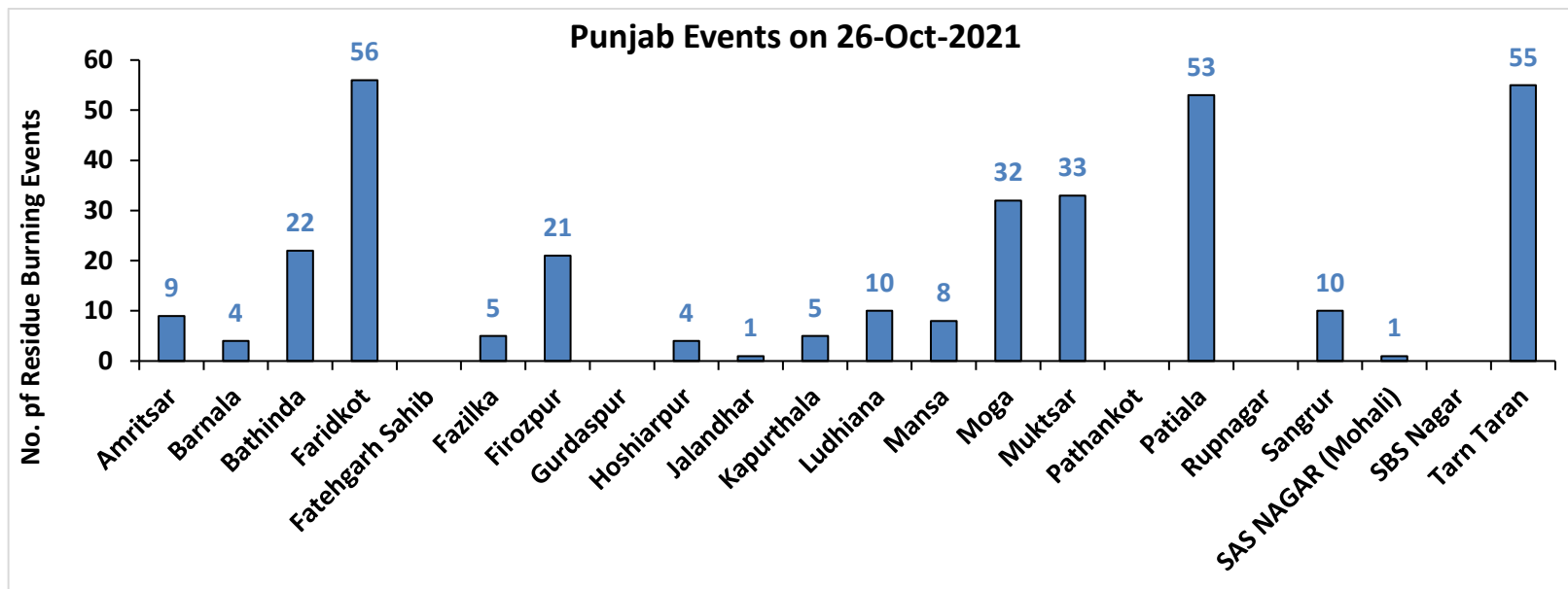
Fire Intensity (W/m²)

- 0 - 5
- 6 - 10
- 11 - 15
- 16 - 20
- >20



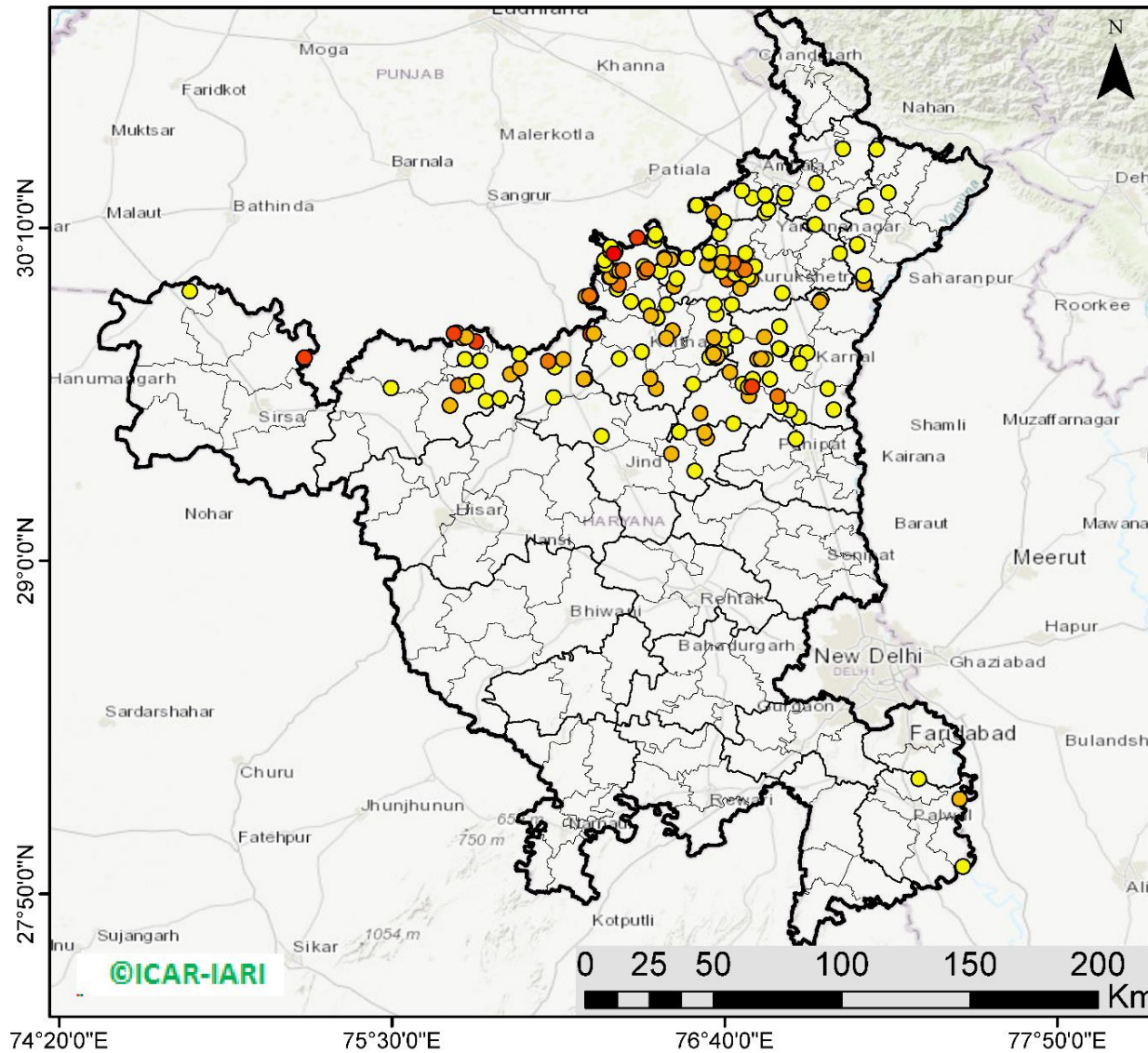
<http://geoportal.icar.gov.in:8080/geoexplorer/composer/>

District-wise cumulative number of residues burning events in Punjab (15 Sep - 26 Oct-2021)



Haryana

RICE RESIDUE BURNING IN HARYANA



175 burning events detected in Haryana on **26th October 2021**

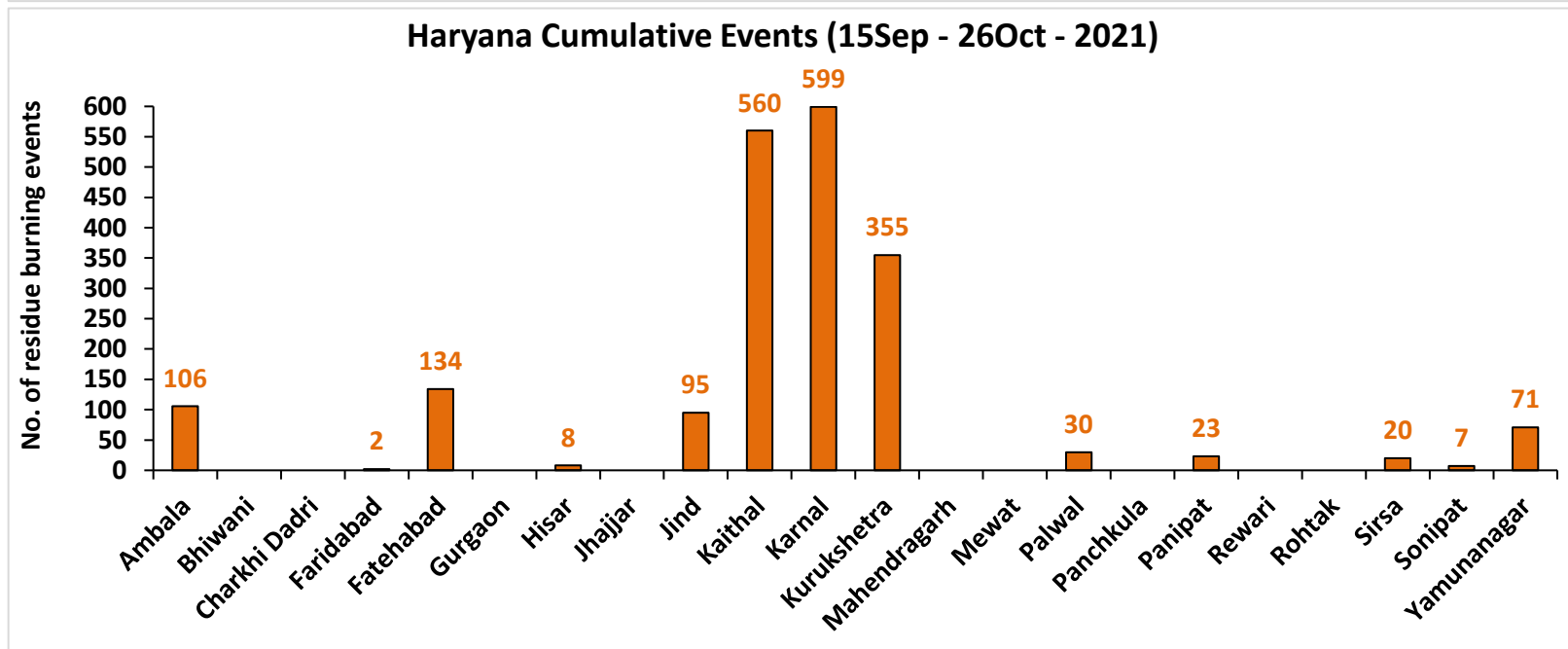
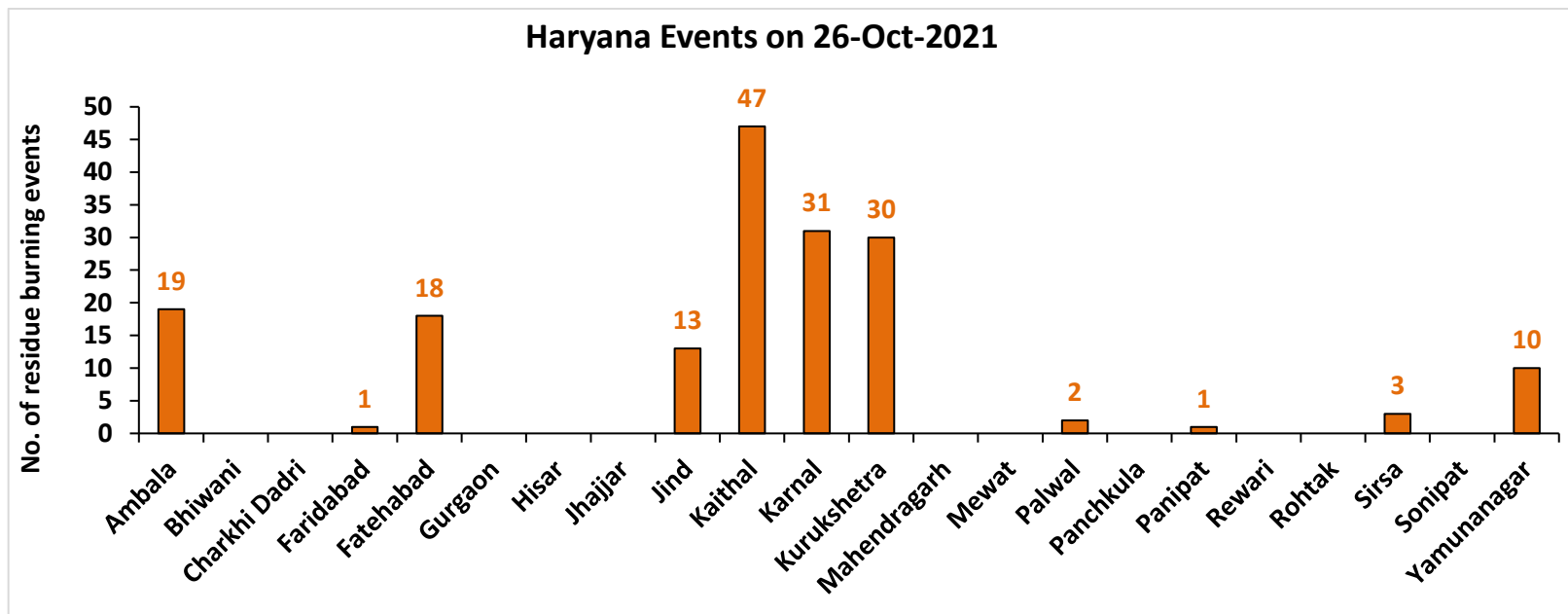
Fire Intensity (W/m²)

- 0 - 5
- 6 - 10
- 11 - 15
- 16 - 20
- >20



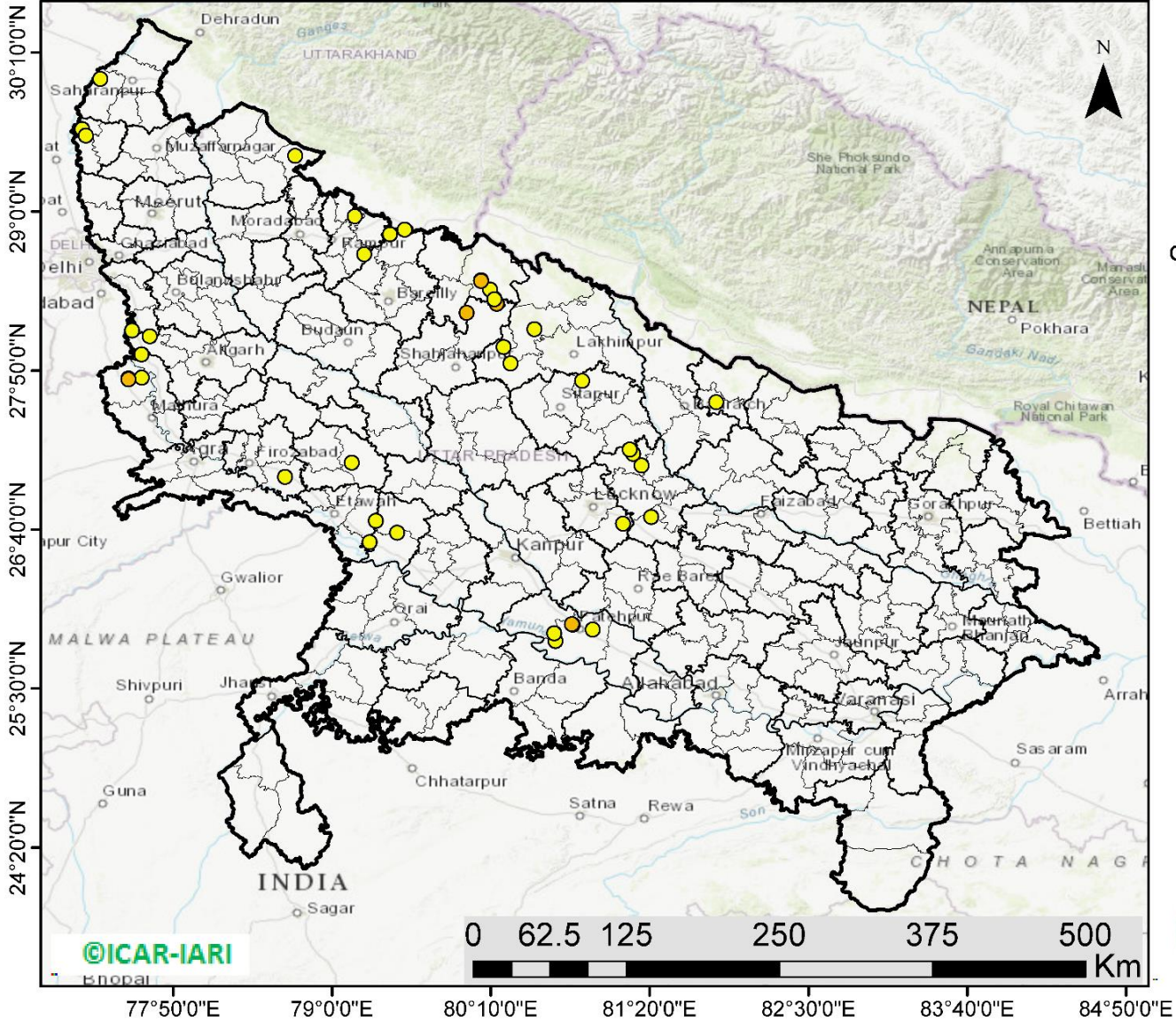
<http://geoportal.icar.gov.in:8080/geoexplorer/composer/>

District-wise cumulative number of residues burning events in Haryana (15 Sep - 26 Oct-2021)



Uttar Pradesh

RICE RESIDUE BURNING IN UTTAR PRADESH



41 burning events detected in Uttar Pradesh on 26th October 2021

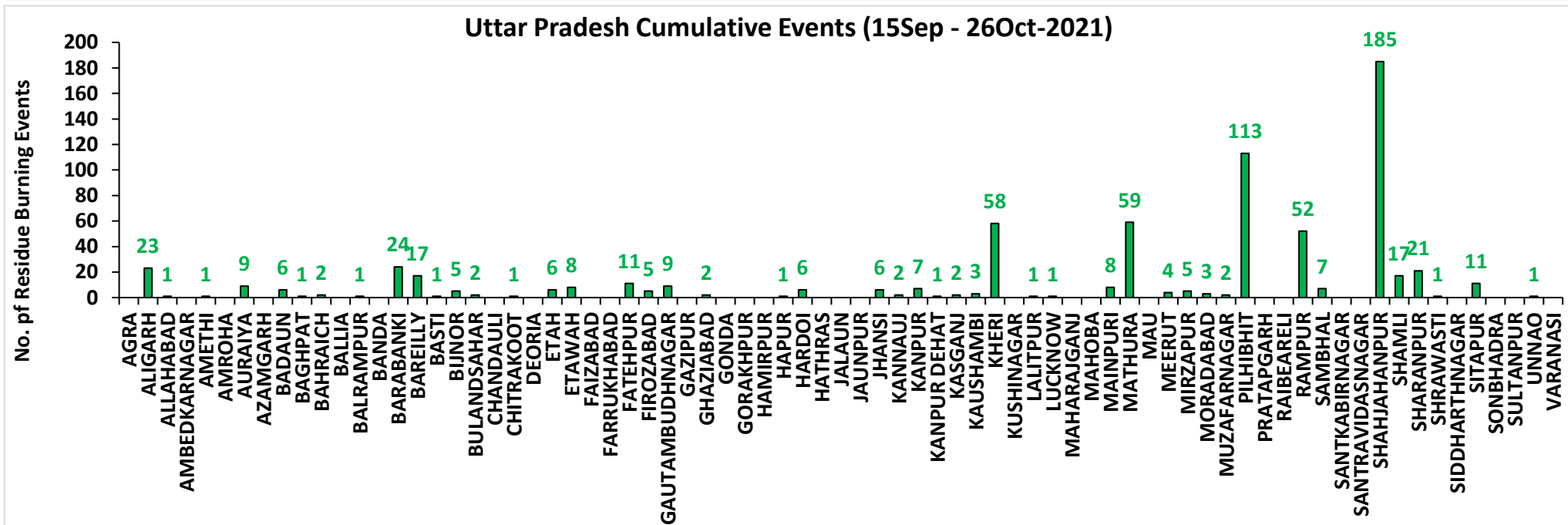
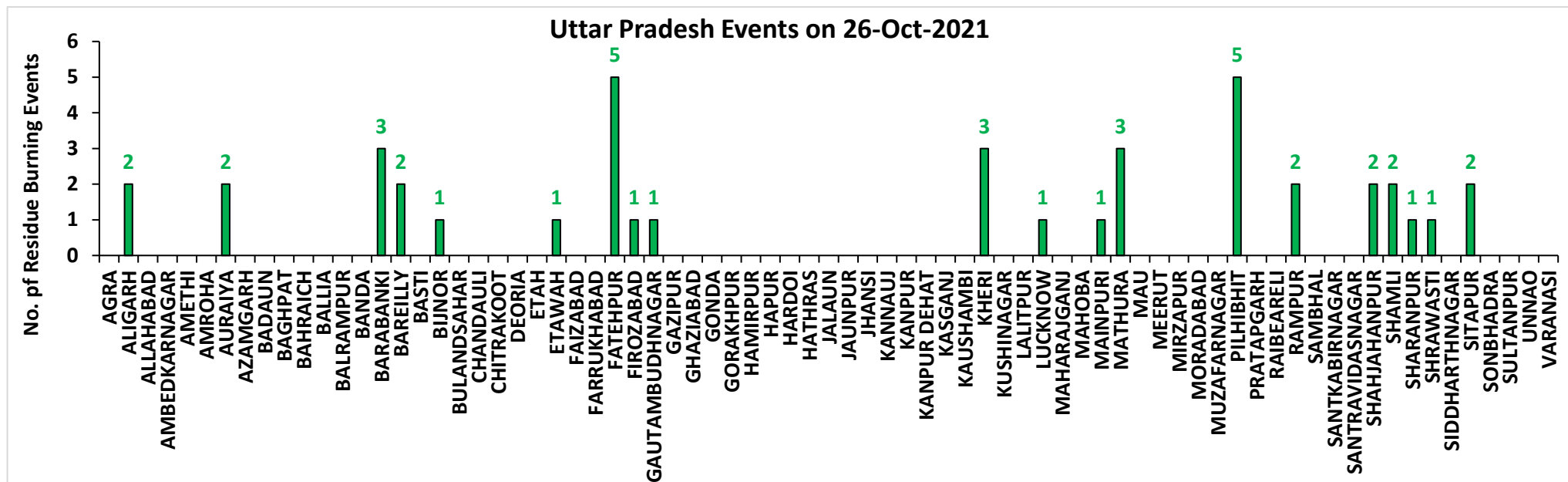
Fire Intensity (W/m2)

- 0 - 5
- 6 - 10
- 11 - 15
- 16 - 20
- >20



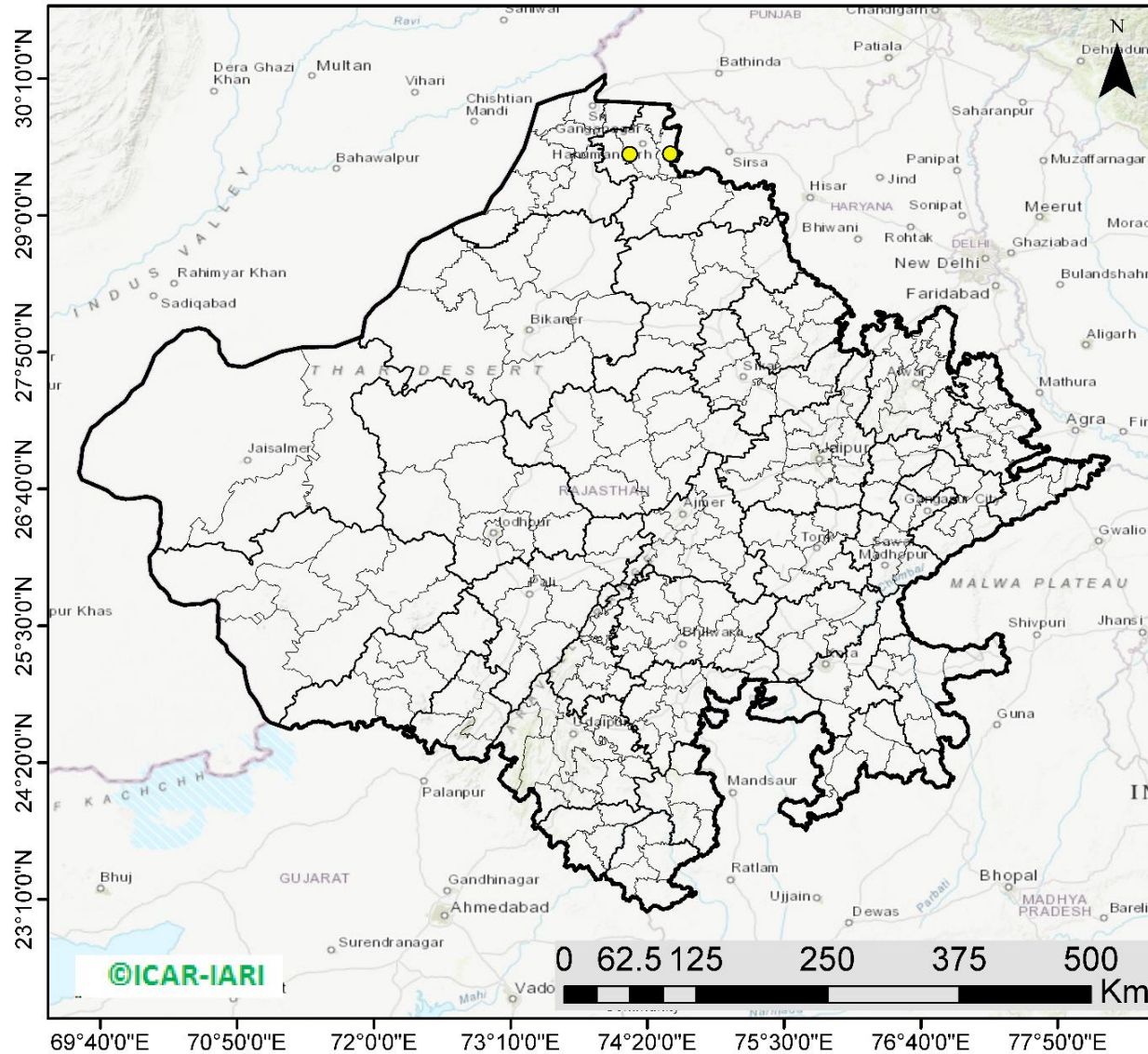
<http://geoportal.icar.gov.in:8080/geoexplorer/composer/>

District-wise cumulative number of residues burning events in Uttar Pradesh (15 Sep - 26 Oct-2021)



Rajasthan

RICE RESIDUE BURNING IN RAJASTHAN



03 burning events
detected in Rajasthan on
26th October 2021

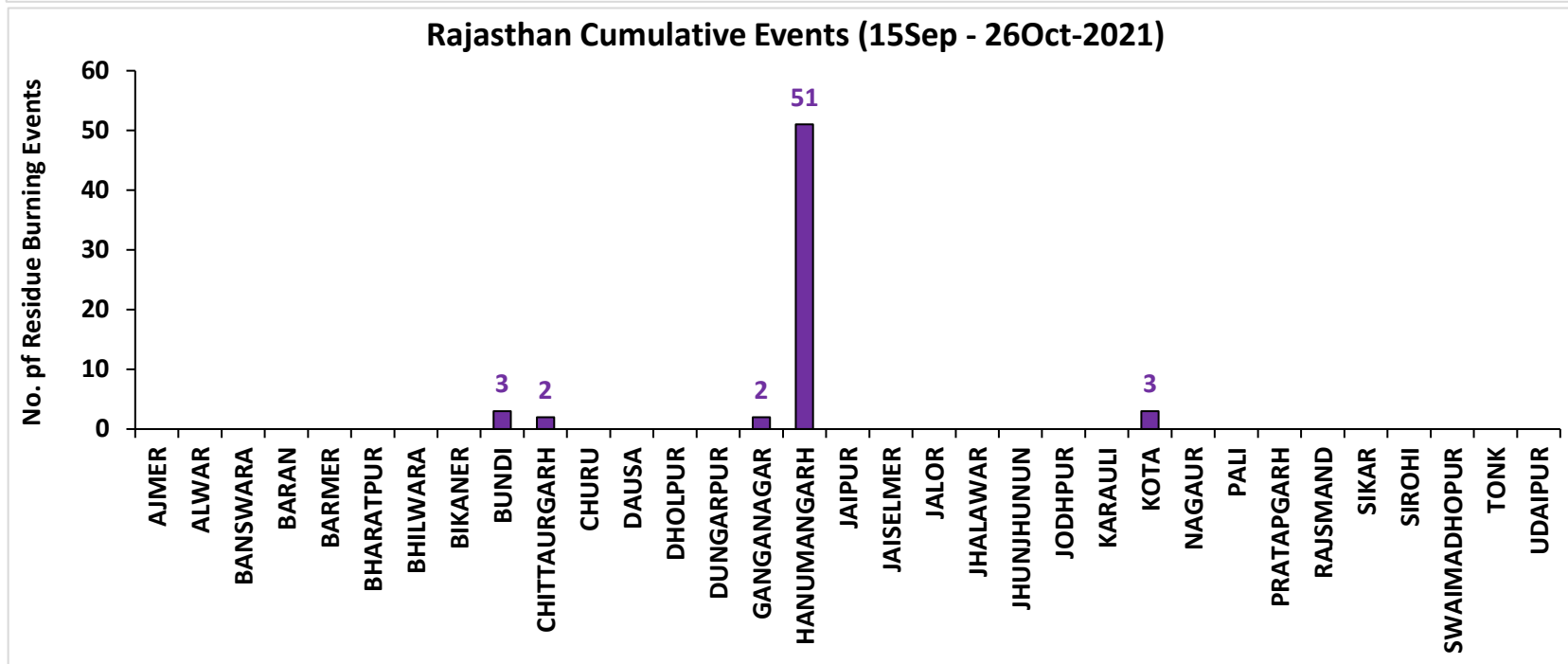
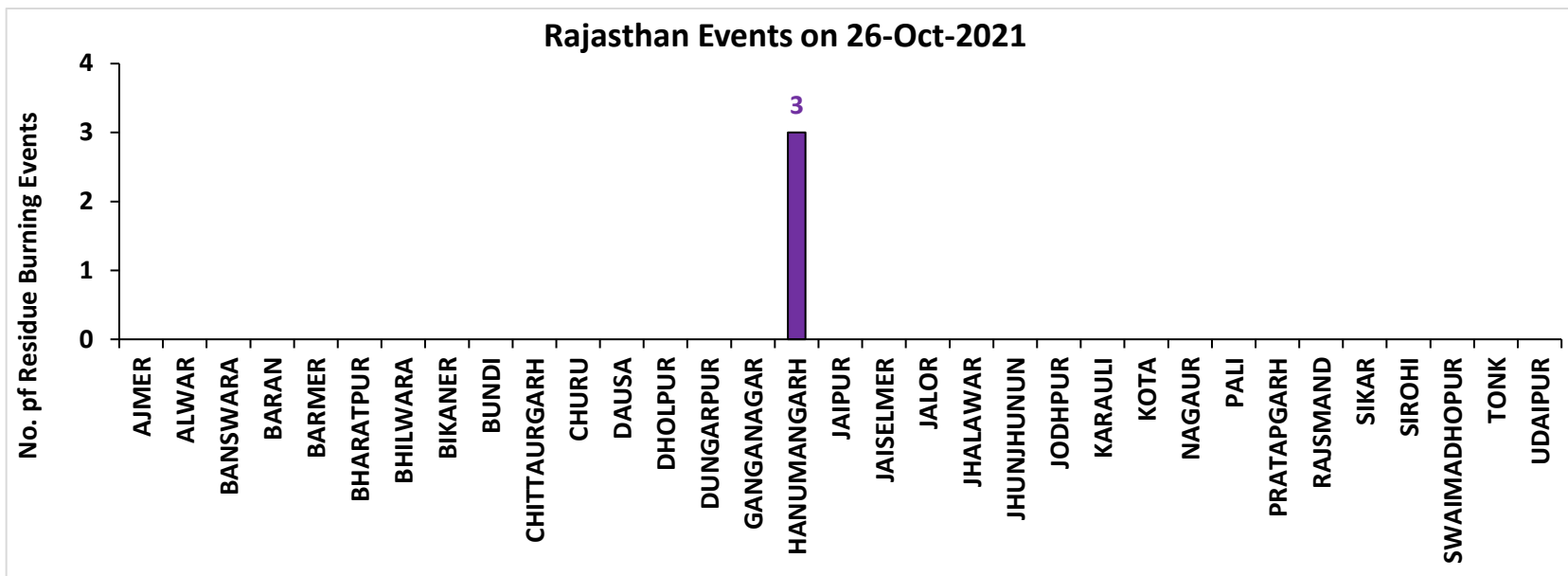
Fire Intensity (W/m²)

- 0 - 5
- 6 - 10
- 11 - 15
- 16 - 20
- >20



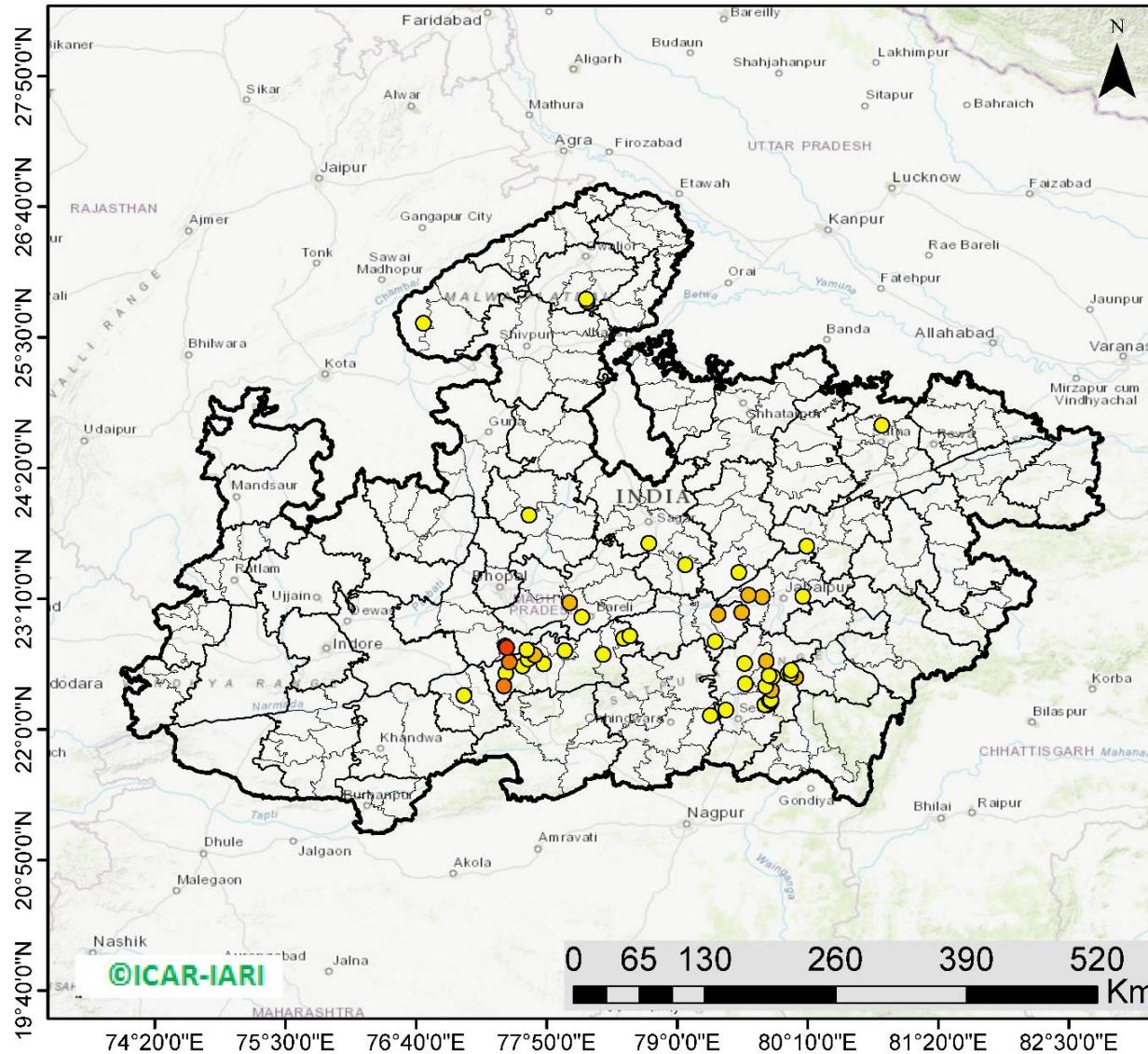
<http://geoportal.icar.gov.in:8080/geoexplorer/composer/>

District-wise cumulative number of residues burning events in Rajasthan (15 Sep - 26 Oct-2021)



Madhya Pradesh

RICE RESIDUE BURNING IN MADHYA PRADESH



55 burning events detected in MP on 26th October 2021

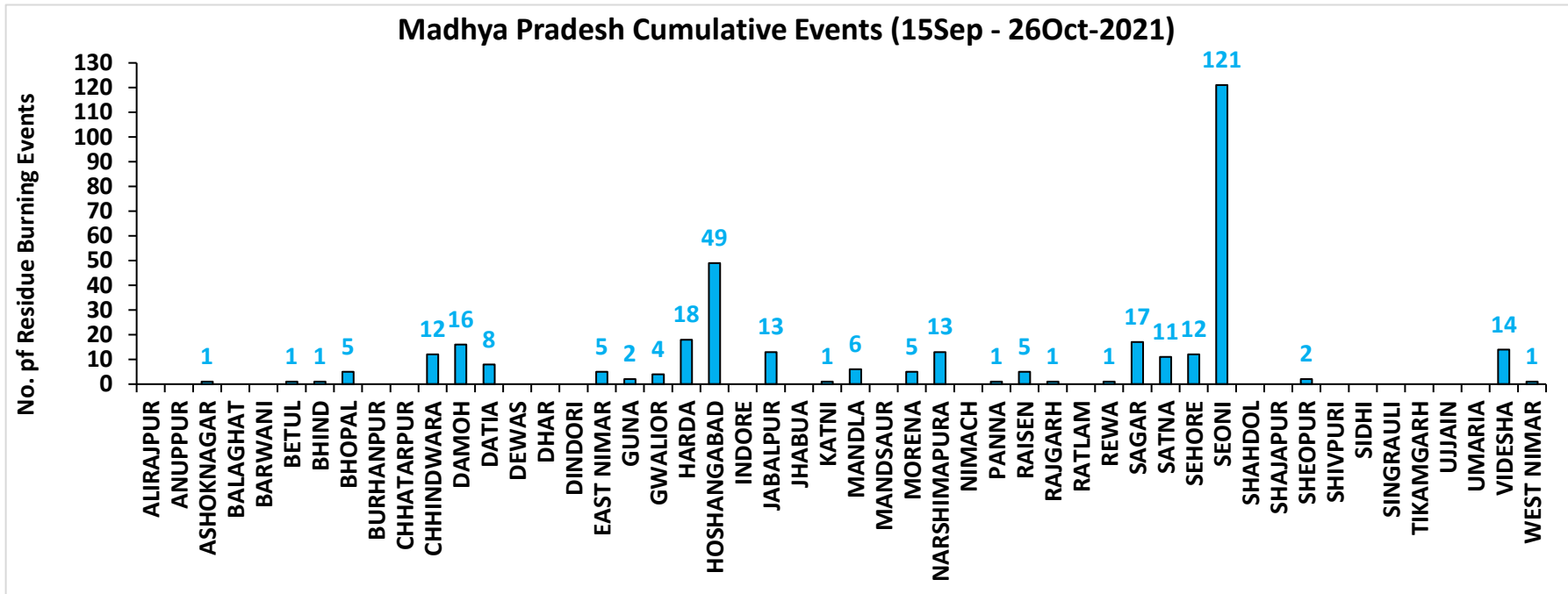
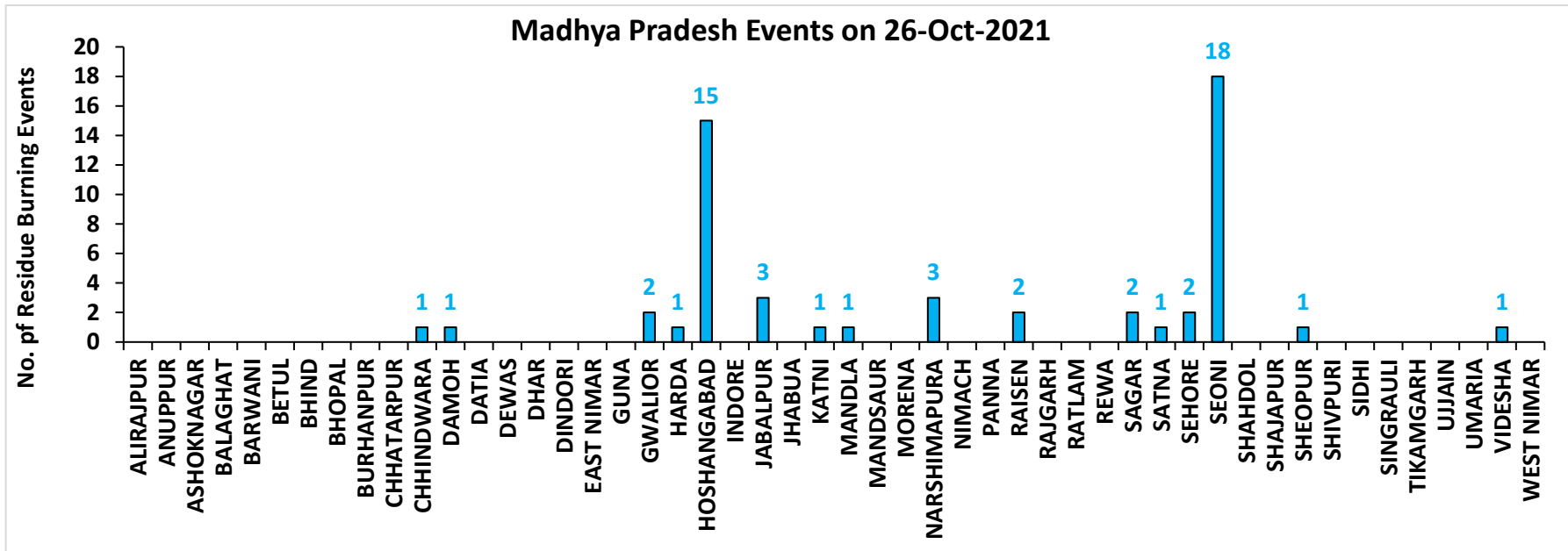
Fire Intensity (W/m²)

- 0 - 5
- 6 - 10
- 11 - 15
- 16 - 20
- >20



<http://geoportal.icar.gov.in:8080/geoexplorer/composer/>

District-wise cumulative number of residues burning events in Madhya Pradesh (15 Sep - 26 Oct-2021)



District-wise cumulative number of residues burning events detected in 2020 and 2021
(Period: 15 September - 26 October)

(a) Punjab

District	15 Sep – 26 Oct	
	2020	2021
AMRITSAR	2432	956
BARNALA	143	51
BATHINDA	275	97
FARIDKOT	963	357
FATEHGARH SAHIB	600	286
FAZILKA	281	91
FIROZPUR	2541	420
GURDASPUR	1449	394
HOSHIARPUR	242	62
JALANDHAR	452	275
KAPURTHALA	960	397
LUDHIANA	519	399
MANSA	211	41
MOGA	382	166
MUKTSAR	415	129
PATHANKOT	7	0
PATIALA	1695	570
RUPNAGAR	83	46
SANGRUR	767	159
SAS NAGAR (MOHALI)	90	55
SBS NAGAR	38	34
TARN TARAN	3802	1478
Total	18347	6463

(b) Haryana

District	15 Sep – 26 Oct	
	2020	2021
AMBALA	239	106
BHIWANI	0	0
CHARKHI DADRI	0	0
FARIDABAD	1	2
FATEHABAD	137	134
GURGAON	0	0
HISAR	10	8
JHAJJAR	1	0
JIND	57	95
KAITHAL	407	560
KARNAL	443	599
KURUKSHETRA	354	355
MAHENDRAGARH	0	0
MEWAT	0	0
PALWAL	31	30
PANCHKULA	0	0
PANIPAT	13	23
REWARI	0	0
ROHTAK	2	0
SIRSA	37	20
SONIPAT	17	7
YAMUNANAGAR	100	71
Total	1849	2010

(c) Uttar Pradesh

District	15 Sep – 26 Oct							
	2020	2021	GAUTAMBUDHNAGAR	6	9	MUZAFARNAGAR	3	2
AGRA	2	0	GAZIPUR	0	0	PILHIBHIT	10	113
ALIGARH	59	23	GHAZIABAD	5	2	PRATAPGARH	4	0
ALLAHABAD	0	1	GONDA	0	0	RAIBEARELI	1	0
AMBEDKARNAGAR	0	0	GORAKHPUR	1	0	RAMPUR	61	52
AMETHI	1	1	HAMIRPUR	1	0	SAMBHAL	7	7
AMROHA	2	0	HAPUR	7	1	SANTKABIRNAGAR	0	0
AURAIYA	19	9	HARDOI	20	6	SANTRAVIDASNAGAR	0	0
AZAMGARH	0	0	HATHRAS	0	0	SHAHJAHANPUR	53	185
BADAUN	2	6	JALAUN	1	0	SHAMLI	21	17
BAGHPAT	5	1	JAUNPUR	0	0	SHARANPUR	47	21
BAHRAICH	29	2	JHANSI	31	6	SHRAWASTI	10	1
BALLIA	0	0	KANNAUJ	8	2	SIDDHARTHANAGAR	0	0
BALRAMPUR	5	1	KANPUR	6	7	SITAPUR	21	11
BANDA	0	0	KANPUR DEHAT	15	1	SONBHADRA	0	0
BARABANKI	23	24	KASGANJ	2	2	SULTANPUR	1	0
BAREILLY	25	17	KAUSHAMBI	17	3	UNNAO	7	1
BASTI	3	1	KHERI	54	58	VARANASI	1	0
BIJNOR	8	5	KUSHINAGAR	0	0	Total	816	712
BULANDSAHAR	19	2	LALITPUR	0	1			
CHANDAULI	0	0	LUCKNOW	4	1			
CHITRAKOOT	0	1	MAHARAJGANJ	0	0			
DEORIA	1	0	MAHOPA	12	0			
ETAH	12	6	MAINPURI	15	8			
ETAWAH	10	8	MATHURA	65	59			
FAIZABAD	3	0	MAU	0	0			
FARRUKHABAD	1	0	MEERUT	16	4			
FATEHPUR	28	11	MIRZAPUR	6	5			
FIROZABAD	12	5	MORADABAD	8	3			

(d) Delhi

District	15 Sep – 26 Oct	
	2020	2021
CENTRAL	0	0
EAST	0	0
NEW DELHI	0	0
NORTH	2	0
NORTH EAST	0	0
NORTH WEST DELHI	3	0
SHAHADRA	0	0
SOUTH	1	0
SOUTH EAST	0	0
SOUTH WEST DELHI	0	0
WEST DELHI	2	0
Total	8	0

(e) Rajasthan

District	15 Sep – 26 Oct	
	2020	2021
AJMER	2	0
ALWAR	2	0
BANSWARA	0	0
BARAN	109	0
BARMER	2	0
BHARATPUR	2	0
BHILWARA	4	0
BIKANER	1	0
BUNDI	28	3
CHITTAURGARH	0	2
CHURU	0	0
DAUSA	0	0
DHOLPUR	0	0
DUNGARPUR	0	0
GANGANAGAR	7	2
HANUMANGARH	242	51
JAIPUR	2	0
JAISELMER	2	0
JALOR	0	0
JHALAWAR	1	0
JHUNJHUNUN	1	0
JODHPUR	1	0
KARALI	1	0
KOTA	52	3
NAGAUR	0	0
PALI	2	0
PRATAPGARH	5	0
RAJSMAND	0	0
SIKAR	0	0
SIROHI	1	0
SWAIMADHOPUR	16	0
TONK	3	0
UDAIPUR	0	0
Total	486	61

(f) Madhya Pradesh

District	15 Sep – 26 Oct				
	2020	2021			
			PANNA	10	1
ALIRAJPUR	0	0	RAISEN	89	5
ANUPPUR	0	0	RAJGARH	7	1
ASHOKNAGAR	52	1	RATLAM	0	0
BALAGHAT	0	0	REWA	19	1
BARWANI	0	0	SAGAR	21	17
BETUL	4	1	SATNA	45	11
BHIND	21	1	SEHORE	31	12
BHOPAL	15	5	SEONI	159	121
BURHANPUR	0	0	SHAHDOL	0	0
CHHATARPUR	4	0	SHAJAPUR	5	0
CHHINDWARA	18	12	SHEOPUR	67	2
DAMOH	41	16	SHIVPURI	32	0
DATIA	159	8	SIDHI	0	0
DEWAS	3	0	SINGRAULI	0	0
DHAR	23	0	TIKAMGARH	1	0
DINDORI	0	0	UJJAIN	5	0
EAST NIMAR	11	5	UMARIA	0	0
GUNA	33	2	VIDESHA	77	14
GWALIOR	175	4	WEST NIMAR	21	1
HARDA	10	18	Total	1501	346
HOSHANGABAD	207	49			
INDORE	2	0			
JABALPUR	45	13			
JHABUA	0	0			
KATNI	22	1			
MANDLA	6	6			
MANDSAUR	3	0			
MORENA	32	5			
NARSHIMAPURA	26	13			
NIMACH	0	0			

State-wise and date-wise number of paddy residue burning events detected in 2020 and 2021
(Period: 15 September – 26 October)

Number of Paddy Residue Burning Events Detected

	Punjab		Haryana		Uttar Pradesh		Delhi		Rajasthan		Madhya Pradesh	
	2020	2021	2020	2021	2020	2021	2020	2021	2020	2021	2020	2021
15-Sep	5	0	2	0	1	0	0	0	1	0	2	0
16-Sep	0	2	1	0	0	0	0	0	0	0	0	0
17-Sep	5	0	3	0	0	0	0	0	0	0	0	0
18-Sep	17	9	0	0	0	1	0	0	0	0	0	0
19-Sep	30	5	2	0	0	1	0	0	0	0	0	0
20-Sep	67	8	6	0	2	0	0	0	0	0	0	0
21-Sep	54	0	2	0	1	0	0	0	1	0	2	0
22-Sep	34	0	1	0	1	0	0	0	0	0	0	0
23-Sep	49	0	0	0	1	0	0	0	1	0	0	0
24-Sep	78	5	0	0	1	1	0	0	0	0	0	0
25-Sep	184	11	11	0	5	0	0	0	1	0	0	0
26-Sep	190	19	5	0	8	0	0	0	1	0	2	0
27-Sep	78	37	8	0	4	1	0	0	0	0	1	0
28-Sep	55	28	6	1	1	6	0	0	0	0	1	1
29-Sep	63	64	9	4	6	10	0	0	3	0	0	4
30-Sep	116	27	22	2	13	13	1	0	1	0	5	0
01-Oct	165	13	15	4	7	13	0	0	4	1	13	0
02-Oct	141	0	30	2	12	0	1	0	7	0	12	0
03-Oct	110	9	8	6	4	3	0	0	9	0	5	1
04-Oct	162	23	29	2	8	0	0	0	15	0	4	2
05-Oct	161	18	17	3	14	2	0	0	14	0	13	1
06-Oct	171	42	30	0	12	1	1	0	16	0	37	1
07-Oct	197	72	32	11	41	13	0	0	14	1	31	1
08-Oct	95	108	29	27	25	11	0	0	11	0	17	2
09-Oct	121	114	20	39	15	20	0	0	12	0	15	4
10-Oct	232	150	33	95	9	54	0	0	14	1	18	10
11-Oct	377	64	90	51	23	28	0	0	21	7	32	2
12-Oct	388	97	69	51	46	23	0	0	24	1	44	1

13-Oct	266	132	47	91	36	42	0	0	7	5	21	2
14-Oct	605	229	69	98	9	68	0	0	16	1	15	11
15-Oct	449	660	106	363	15	149	0	0	9	8	8	27
16-Oct	654	429	80	176	21	121	1	0	12	2	23	13
17-Oct	1172	14	143	0	38	39	0	0	26	0	63	1
18-Oct	938	57	166	1	76	0	0	0	37	2	88	0
19-Oct	1080	496	72	55	43	5	0	0	27	5	49	1
20-Oct	890	788	62	155	31	1	0	0	26	4	9	21
21-Oct	1392	597	101	131	25	5	2	0	32	2	112	30
22-Oct	1665	1111	128	140	32	3	0	0	29	5	183	29
23-Oct	1438	620	106	218	84	8	1	0	23	7	204	32
24-Oct	911	0	57	38	63	11	0	0	20	4	150	34
25-Oct	1416	76	155	71	50	18	1	0	18	2	144	60
26-Oct	2126	329	77	175	33	41	0	0	34	3	178	55
Total	18347	6463	1849	2010	816	712	8	0	486	61	1501	346

Details of residue burning events in Punjab on 26-Oct-2021

S. No.	District	Tehsil / Block	Satellite	Latitude	Longitude	ACQ_DATE	ACQ_TIME	Day / Night	Fire Power (W/m ²)
1	AMRITSAR	ATTARI	S-NPP	31.56920	74.77130	10/26/2021	13:17:01	D	2.90
2	AMRITSAR	HARSHA CHHINA	S-NPP	31.70890	74.73470	10/26/2021	13:17:01	D	6.60
3	AMRITSAR	HARSHA CHHINA	S-NPP	31.74410	74.81600	10/26/2021	13:17:01	D	2.70
4	AMRITSAR	RAYYA	S-NPP	31.50970	75.20910	10/26/2021	13:17:01	D	3.60
5	AMRITSAR	RAYYA	S-NPP	31.51890	75.24010	10/26/2021	13:17:01	D	2.40
6	AMRITSAR	RAYYA	S-NPP	31.53170	75.25120	10/26/2021	13:17:01	D	5.70
7	AMRITSAR	RAYYA	S-NPP	31.54960	75.20910	10/26/2021	13:17:01	D	10.00
8	AMRITSAR	RAYYA	S-NPP	31.56390	75.15540	10/26/2021	02:07:01	N	0.40
9	AMRITSAR	RAYYA	AQUA	31.55900	75.30400	10/26/2021	13:26:11	D	7.00
10	BARNALA	BARNALA	S-NPP	30.34600	75.53250	10/26/2021	13:17:01	D	6.30
11	BARNALA	BARNALA	S-NPP	30.34610	75.53440	10/26/2021	13:17:01	D	6.50
12	BARNALA	BARNALA	S-NPP	30.38720	75.62300	10/26/2021	13:17:01	D	2.20
13	BARNALA	BARNALA	AQUA	30.34000	75.52800	10/26/2021	13:26:11	D	6.90
14	BATHINDA	BATHINDA	S-NPP	30.10740	74.98960	10/26/2021	13:17:01	D	3.60
15	BATHINDA	BATHINDA	S-NPP	30.21670	74.74270	10/26/2021	13:17:01	D	5.50
16	BATHINDA	BATHINDA	S-NPP	30.24430	74.87170	10/26/2021	13:17:01	D	2.90
17	BATHINDA	BATHINDA	AQUA	30.24700	74.87000	10/26/2021	13:26:11	D	14.50
18	BATHINDA	BATHINDA	AQUA	30.27000	74.84400	10/26/2021	13:26:11	D	13.30
19	BATHINDA	GONIANA MANDI	S-NPP	30.32230	74.84790	10/26/2021	13:17:01	D	4.80
20	BATHINDA	GONIANA MANDI	S-NPP	30.33080	74.80770	10/26/2021	13:17:01	D	7.60
21	BATHINDA	GONIANA MANDI	S-NPP	30.33620	74.79640	10/26/2021	13:17:01	D	4.90
22	BATHINDA	GONIANA MANDI	S-NPP	30.34600	74.82910	10/26/2021	13:17:01	D	8.20
23	BATHINDA	GONIANA MANDI	S-NPP	30.37010	74.83830	10/26/2021	13:17:01	D	3.90
24	BATHINDA	GONIANA MANDI	AQUA	30.32700	74.80000	10/26/2021	13:26:11	D	13.20
25	BATHINDA	GONIANA MANDI	AQUA	30.32900	74.93300	10/26/2021	13:26:11	D	10.30
26	BATHINDA	GONIANA MANDI	AQUA	30.33200	74.79200	10/26/2021	13:26:11	D	28.50
27	BATHINDA	NATHANA	S-NPP	30.19010	75.10950	10/26/2021	13:17:01	D	3.10
28	BATHINDA	NATHANA	AQUA	30.40600	75.08200	10/26/2021	13:26:11	D	7.00
29	BATHINDA	PHUL	S-NPP	30.30460	75.28310	10/26/2021	13:17:01	D	13.20

30	BATHINDA	PHUL	S-NPP	30.30550	75.28080	10/26/2021	13:17:01	D	12.80
31	BATHINDA	PHUL	S-NPP	30.30810	75.28230	10/26/2021	13:17:01	D	4.80
32	BATHINDA	PHUL	AQUA	30.30000	75.23300	10/26/2021	13:26:11	D	7.30
33	BATHINDA	PHUL	AQUA	30.35400	75.25700	10/26/2021	13:26:11	D	15.30
34	BATHINDA	SANGAT	S-NPP	30.13970	74.87430	10/26/2021	13:17:01	D	27.20
35	BATHINDA	SANGAT	AQUA	30.11500	74.89300	10/26/2021	13:26:11	D	9.20
36	FARIDKOT	FARIDKOT	S-NPP	30.62040	74.76650	10/26/2021	13:17:01	D	2.20
37	FARIDKOT	FARIDKOT	S-NPP	30.63220	74.62510	10/26/2021	13:17:01	D	9.90
38	FARIDKOT	FARIDKOT	S-NPP	30.65470	74.60430	10/26/2021	13:17:01	D	49.70
39	FARIDKOT	FARIDKOT	S-NPP	30.67350	74.64540	10/26/2021	13:17:01	D	3.70
40	FARIDKOT	FARIDKOT	S-NPP	30.67710	74.64450	10/26/2021	13:17:01	D	3.70
41	FARIDKOT	FARIDKOT	S-NPP	30.68080	74.62340	10/26/2021	13:17:01	D	4.50
42	FARIDKOT	FARIDKOT	S-NPP	30.70690	74.82790	10/26/2021	13:17:01	D	14.10
43	FARIDKOT	FARIDKOT	S-NPP	30.71020	74.68190	10/26/2021	13:17:01	D	50.10
44	FARIDKOT	FARIDKOT	S-NPP	30.71830	74.58080	10/26/2021	13:17:01	D	2.90
45	FARIDKOT	FARIDKOT	S-NPP	30.71870	74.58360	10/26/2021	13:17:01	D	3.80
46	FARIDKOT	FARIDKOT	S-NPP	30.72810	74.53250	10/26/2021	13:17:01	D	20.80
47	FARIDKOT	FARIDKOT	S-NPP	30.73000	74.58300	10/26/2021	13:17:01	D	7.20
48	FARIDKOT	FARIDKOT	S-NPP	30.73040	74.77230	10/26/2021	13:17:01	D	28.40
49	FARIDKOT	FARIDKOT	S-NPP	30.73390	74.77150	10/26/2021	13:17:01	D	6.10
50	FARIDKOT	FARIDKOT	S-NPP	30.74850	74.72790	10/26/2021	13:17:01	D	11.50
51	FARIDKOT	FARIDKOT	S-NPP	30.74880	74.72480	10/26/2021	13:17:01	D	5.40
52	FARIDKOT	FARIDKOT	S-NPP	30.74960	74.72960	10/26/2021	13:17:01	D	6.80
53	FARIDKOT	FARIDKOT	S-NPP	30.75690	74.66760	10/26/2021	13:17:01	D	2.40
54	FARIDKOT	FARIDKOT	S-NPP	30.76970	74.53250	10/26/2021	13:17:01	D	5.90
55	FARIDKOT	FARIDKOT	S-NPP	30.77560	74.72830	10/26/2021	13:17:01	D	18.10
56	FARIDKOT	FARIDKOT	S-NPP	30.77730	74.75790	10/26/2021	13:17:01	D	5.70
57	FARIDKOT	FARIDKOT	S-NPP	30.77920	74.72750	10/26/2021	13:17:01	D	18.10
58	FARIDKOT	FARIDKOT	S-NPP	30.78090	74.75710	10/26/2021	13:17:01	D	17.60
59	FARIDKOT	FARIDKOT	S-NPP	30.79630	74.67810	10/26/2021	13:17:01	D	13.60
60	FARIDKOT	FARIDKOT	S-NPP	30.79630	74.69820	10/26/2021	13:17:01	D	2.70
61	FARIDKOT	FARIDKOT	S-NPP	30.79960	74.75750	10/26/2021	13:17:01	D	2.70
62	FARIDKOT	FARIDKOT	S-NPP	30.80320	74.75660	10/26/2021	13:17:01	D	3.90

63	FARIDKOT	FARIDKOT	S-NPP	30.80340	74.69650	10/26/2021	13:17:01	D	3.10
64	FARIDKOT	FARIDKOT	S-NPP	30.80880	74.70520	10/26/2021	13:17:01	D	2.40
65	FARIDKOT	FARIDKOT	S-NPP	30.81350	74.64870	10/26/2021	13:17:01	D	21.10
66	FARIDKOT	FARIDKOT	AQUA	30.62400	74.62900	10/26/2021	13:26:11	D	11.10
67	FARIDKOT	FARIDKOT	AQUA	30.67000	74.82700	10/26/2021	13:26:11	D	9.50
68	FARIDKOT	FARIDKOT	AQUA	30.67300	74.84100	10/26/2021	13:26:11	D	8.50
69	FARIDKOT	FARIDKOT	AQUA	30.70200	74.78300	10/26/2021	13:26:11	D	6.30
70	FARIDKOT	FARIDKOT	AQUA	30.72000	74.52200	10/26/2021	13:26:11	D	10.50
71	FARIDKOT	FARIDKOT	AQUA	30.72300	74.53700	10/26/2021	13:26:11	D	18.50
72	FARIDKOT	FARIDKOT	AQUA	30.77100	74.53500	10/26/2021	13:26:11	D	12.10
73	FARIDKOT	FARIDKOT	AQUA	30.79500	74.66500	10/26/2021	13:26:11	D	15.70
74	FARIDKOT	FARIDKOT	AQUA	30.79700	74.67900	10/26/2021	13:26:11	D	14.30
75	FARIDKOT	JAITON	S-NPP	30.38670	74.90900	10/26/2021	13:17:01	D	15.90
76	FARIDKOT	JAITON	S-NPP	30.41940	74.82140	10/26/2021	13:17:01	D	24.10
77	FARIDKOT	JAITON	AQUA	30.43000	74.88200	10/26/2021	13:26:11	D	32.80
78	FARIDKOT	JAITON	AQUA	30.43500	74.88600	10/26/2021	13:26:11	D	24.50
79	FARIDKOT	JAITON	AQUA	30.52200	74.97700	10/26/2021	13:26:11	D	6.60
80	FARIDKOT	KOT KAPURA	S-NPP	30.53010	74.83140	10/26/2021	13:17:01	D	4.40
81	FARIDKOT	KOT KAPURA	S-NPP	30.53870	74.75420	10/26/2021	13:17:01	D	3.20
82	FARIDKOT	KOT KAPURA	S-NPP	30.55490	74.81730	10/26/2021	13:17:01	D	4.40
83	FARIDKOT	KOT KAPURA	S-NPP	30.55700	74.72660	10/26/2021	13:17:01	D	6.20
84	FARIDKOT	KOT KAPURA	S-NPP	30.56140	74.73060	10/26/2021	13:17:01	D	9.10
85	FARIDKOT	KOT KAPURA	S-NPP	30.57190	74.80820	10/26/2021	13:17:01	D	2.80
86	FARIDKOT	KOT KAPURA	S-NPP	30.58490	74.69460	10/26/2021	13:17:01	D	6.10
87	FARIDKOT	KOT KAPURA	S-NPP	30.61480	74.81780	10/26/2021	13:17:01	D	2.70
88	FARIDKOT	KOT KAPURA	AQUA	30.52400	74.82300	10/26/2021	13:26:11	D	10.50
89	FARIDKOT	KOT KAPURA	AQUA	30.52600	74.83700	10/26/2021	13:26:11	D	13.80
90	FARIDKOT	KOT KAPURA	AQUA	30.58100	74.72000	10/26/2021	13:26:11	D	14.30
91	FARIDKOT	KOT KAPURA	AQUA	30.60900	74.78200	10/26/2021	13:26:11	D	8.40
92	FAZILKA	ABOHAR	S-NPP	30.07610	74.24380	10/26/2021	13:17:01	D	5.00
93	FAZILKA	ABOHAR	AQUA	30.06400	74.28000	10/26/2021	13:26:11	D	11.80
94	FAZILKA	JALALABAD	S-NPP	30.53700	74.31000	10/26/2021	13:17:01	D	10.30
95	FAZILKA	JALALABAD	AQUA	30.46200	74.30200	10/26/2021	13:26:11	D	8.70

96	FAZILKA	KHUIAN SARWAR	S-NPP	30.30470	74.00670	10/26/2021	13:17:01	D	2.80
97	FIROZPUR	GHALL KHURD	S-NPP	30.76980	74.86720	10/26/2021	13:17:01	D	4.10
98	FIROZPUR	GHALL KHURD	S-NPP	30.77150	74.86870	10/26/2021	13:17:01	D	6.00
99	FIROZPUR	GHALL KHURD	S-NPP	30.83840	74.68290	10/26/2021	13:17:01	D	2.00
100	FIROZPUR	GHALL KHURD	S-NPP	30.89790	74.74040	10/26/2021	13:17:01	D	9.50
101	FIROZPUR	GHALL KHURD	S-NPP	30.90140	74.73950	10/26/2021	13:17:01	D	4.40
102	FIROZPUR	GHALL KHURD	S-NPP	30.91520	74.83560	10/26/2021	13:17:01	D	3.20
103	FIROZPUR	GHALL KHURD	AQUA	30.86000	74.68800	10/26/2021	13:26:11	D	8.20
104	FIROZPUR	GURUHAR SAHAI	S-NPP	30.65020	74.45690	10/26/2021	13:17:01	D	5.70
105	FIROZPUR	GURUHAR SAHAI	S-NPP	30.68200	74.40250	10/26/2021	13:17:01	D	20.90
106	FIROZPUR	MAKHU	S-NPP	31.05500	75.02410	10/26/2021	13:17:01	D	8.10
107	FIROZPUR	ZIRA	S-NPP	30.90680	75.00290	10/26/2021	13:17:01	D	2.80
108	FIROZPUR	ZIRA	S-NPP	30.90890	75.00400	10/26/2021	13:17:01	D	3.10
109	FIROZPUR	ZIRA	S-NPP	30.95220	74.87600	10/26/2021	13:17:01	D	2.40
110	FIROZPUR	ZIRA	S-NPP	30.97100	74.85660	10/26/2021	13:17:01	D	29.70
111	FIROZPUR	ZIRA	S-NPP	31.02500	74.89960	10/26/2021	13:17:01	D	3.00
112	FIROZPUR	ZIRA	S-NPP	31.02590	74.90430	10/26/2021	13:17:01	D	5.00
113	FIROZPUR	ZIRA	S-NPP	31.04050	74.96430	10/26/2021	13:17:01	D	11.40
114	FIROZPUR	ZIRA	AQUA	30.90300	74.97600	10/26/2021	13:26:11	D	9.70
115	FIROZPUR	ZIRA	AQUA	30.94700	74.87200	10/26/2021	13:26:11	D	15.50
116	FIROZPUR	ZIRA	AQUA	30.96400	74.91100	10/26/2021	13:26:11	D	14.00
117	FIROZPUR	ZIRA	AQUA	30.97400	74.90900	10/26/2021	13:26:11	D	7.20
118	HOSHIARPUR	DASUYA	S-NPP	31.75260	75.60440	10/26/2021	13:17:01	D	3.40
119	HOSHIARPUR	TANDA	S-NPP	31.64380	75.58320	10/26/2021	13:17:01	D	4.30
120	HOSHIARPUR	TANDA	AQUA	31.63600	75.57800	10/26/2021	13:26:11	D	13.60
121	HOSHIARPUR	TANDA	AQUA	31.63800	75.59100	10/26/2021	13:26:11	D	12.20
122	JALANDHAR	SHAHKOT	S-NPP	31.03330	75.31040	10/26/2021	13:17:01	D	3.30
123	KAPURTHALA	DHILWAN	S-NPP	31.40360	75.24730	10/26/2021	13:17:01	D	2.90
124	KAPURTHALA	DHILWAN	S-NPP	31.48800	75.33560	10/26/2021	13:17:01	D	4.20
125	KAPURTHALA	DHILWAN	S-NPP	31.50330	75.44410	10/26/2021	13:17:01	D	3.00
126	KAPURTHALA	DHILWAN	S-NPP	31.50680	75.44330	10/26/2021	13:17:01	D	4.50
127	KAPURTHALA	SULTANPUR LODHI	S-NPP	31.36990	75.16040	10/26/2021	13:17:01	D	7.50
128	LUDHIANA	JAGRAON	S-NPP	30.59010	75.41380	10/26/2021	13:17:01	D	2.90

129	LUDHIANA	JAGRAON	S-NPP	30.73950	75.55840	10/26/2021	13:17:01	D	4.20
130	LUDHIANA	JAGRAON	S-NPP	30.74470	75.50580	10/26/2021	13:17:01	D	7.90
131	LUDHIANA	JAGRAON	S-NPP	30.74480	75.54780	10/26/2021	13:17:01	D	12.40
132	LUDHIANA	JAGRAON	S-NPP	30.75330	75.55510	10/26/2021	13:17:01	D	5.00
133	LUDHIANA	RAIKOT	S-NPP	30.63790	75.52020	10/26/2021	13:17:01	D	2.30
134	LUDHIANA	RAIKOT	AQUA	30.73000	75.52100	10/26/2021	13:26:11	D	9.40
135	LUDHIANA	RAIKOT	AQUA	30.73100	75.52900	10/26/2021	13:26:11	D	5.70
136	LUDHIANA	SIDHWAN BET	AQUA	30.86600	75.40900	10/26/2021	13:26:11	D	7.90
137	LUDHIANA	SUDHAR	S-NPP	30.71270	75.61120	10/26/2021	13:17:01	D	1.60
138	MANSA	BHIKHI	S-NPP	30.14870	75.36400	10/26/2021	13:17:01	D	2.80
139	MANSA	JHUNIR	AQUA	29.89100	75.19800	10/26/2021	13:26:11	D	24.30
140	MANSA	SARDULGARH	S-NPP	29.63240	75.20760	10/26/2021	13:17:01	D	3.10
141	MANSA	SARDULGARH	S-NPP	29.67780	75.29440	10/26/2021	13:17:01	D	4.70
142	MANSA	SARDULGARH	S-NPP	29.68140	75.29360	10/26/2021	13:17:01	D	4.70
143	MANSA	SARDULGARH	S-NPP	29.73690	75.31450	10/26/2021	13:17:01	D	2.30
144	MANSA	SARDULGARH	S-NPP	29.80760	75.22270	10/26/2021	13:17:01	D	7.10
145	MANSA	SARDULGARH	S-NPP	29.81190	75.22650	10/26/2021	13:17:01	D	3.00
146	MOGA	BAGHA PURANA	S-NPP	30.53860	75.10500	10/26/2021	13:17:01	D	2.40
147	MOGA	BAGHA PURANA	S-NPP	30.57810	75.03710	10/26/2021	13:17:01	D	6.10
148	MOGA	BAGHA PURANA	S-NPP	30.58170	75.03620	10/26/2021	13:17:01	D	6.10
149	MOGA	BAGHA PURANA	S-NPP	30.68850	75.10480	10/26/2021	13:17:01	D	16.50
150	MOGA	BAGHA PURANA	S-NPP	30.72530	74.99110	10/26/2021	13:17:01	D	5.90
151	MOGA	BAGHA PURANA	AQUA	30.57200	75.03000	10/26/2021	13:26:11	D	6.50
152	MOGA	BAGHA PURANA	AQUA	30.57400	75.04400	10/26/2021	13:26:11	D	8.10
153	MOGA	BAGHA PURANA	AQUA	30.63700	75.10000	10/26/2021	13:26:11	D	12.10
154	MOGA	BAGHA PURANA	AQUA	30.63900	75.11400	10/26/2021	13:26:11	D	10.10
155	MOGA	KOT ISE KHAN AT DHARAMKOT	S-NPP	30.87460	75.21350	10/26/2021	13:17:01	D	5.20
156	MOGA	KOT ISE KHAN AT DHARAMKOT	S-NPP	30.88290	75.17800	10/26/2021	13:17:01	D	4.70
157	MOGA	KOT ISE KHAN AT DHARAMKOT	S-NPP	30.88870	75.27220	10/26/2021	13:17:01	D	5.60
158	MOGA	KOT ISE KHAN AT DHARAMKOT	S-NPP	30.90250	75.28800	10/26/2021	13:17:01	D	14.60

159	MOGA	KOT ISE KHAN AT DHARAMKOT	S-NPP	30.90650	75.31080	10/26/2021	13:17:01	D	6.60
160	MOGA	KOT ISE KHAN AT DHARAMKOT	S-NPP	30.96820	75.23080	10/26/2021	13:17:01	D	5.80
161	MOGA	KOT ISE KHAN AT DHARAMKOT	S-NPP	31.02690	75.27390	10/26/2021	13:17:01	D	8.10
162	MOGA	KOT ISE KHAN AT DHARAMKOT	S-NPP	31.05330	75.19780	10/26/2021	13:17:01	D	17.20
163	MOGA	KOT ISE KHAN AT DHARAMKOT	S-NPP	31.05410	75.20070	10/26/2021	13:17:01	D	22.40
164	MOGA	KOT ISE KHAN AT DHARAMKOT	S-NPP	31.05680	75.19690	10/26/2021	13:17:01	D	11.90
165	MOGA	KOT ISE KHAN AT DHARAMKOT	AQUA	30.88300	75.27600	10/26/2021	13:26:11	D	6.40
166	MOGA	KOT ISE KHAN AT DHARAMKOT	AQUA	30.94000	75.24900	10/26/2021	13:26:11	D	9.10
167	MOGA	MOGA-1	S-NPP	30.74520	75.14190	10/26/2021	13:17:01	D	2.00
168	MOGA	MOGA-1	S-NPP	30.74950	75.22740	10/26/2021	13:17:01	D	5.00
169	MOGA	MOGA-1	S-NPP	30.75570	75.30230	10/26/2021	13:17:01	D	3.30
170	MOGA	MOGA-1	S-NPP	30.76130	75.19100	10/26/2021	13:17:01	D	7.10
171	MOGA	MOGA-1	S-NPP	30.85750	75.17930	10/26/2021	13:17:01	D	3.70
172	MOGA	MOGA-1	AQUA	30.74000	75.22500	10/26/2021	13:26:11	D	8.40
173	MOGA	MOGA-1	AQUA	30.85700	75.17700	10/26/2021	13:26:11	D	11.20
174	MOGA	MOGA-2	S-NPP	30.89160	75.02120	10/26/2021	13:17:01	D	5.00
175	MOGA	MOGA-2	AQUA	30.73500	75.07200	10/26/2021	13:26:11	D	8.00
176	MOGA	MOGA-2	AQUA	30.74200	75.06300	10/26/2021	13:26:11	D	8.10
177	MOGA	MOGA-2	AQUA	30.74500	75.07700	10/26/2021	13:26:11	D	6.00
178	MUKTSAR	KOT BHAI AT GIDDERBAHA	S-NPP	30.27670	74.55450	10/26/2021	13:17:01	D	2.80
179	MUKTSAR	KOT BHAI AT GIDDERBAHA	S-NPP	30.27920	74.55090	10/26/2021	13:17:01	D	6.20
180	MUKTSAR	KOT BHAI AT GIDDERBAHA	S-NPP	30.33280	74.55330	10/26/2021	13:17:01	D	5.60
181	MUKTSAR	KOT BHAI AT GIDDERBAHA	S-NPP	30.35350	74.66590	10/26/2021	13:17:01	D	7.80
182	MUKTSAR	KOT BHAI AT GIDDERBAHA	S-NPP	30.37540	74.57890	10/26/2021	13:17:01	D	4.50

183	MUKTSAR	KOT BHAI AT GIDDERBAHA	S-NPP	30.38510	74.67350	10/26/2021	13:17:01	D	6.00
184	MUKTSAR	KOT BHAI AT GIDDERBAHA	S-NPP	30.39590	74.59120	10/26/2021	13:17:01	D	3.80
185	MUKTSAR	KOT BHAI AT GIDDERBAHA	AQUA	30.27700	74.54800	10/26/2021	13:26:11	D	6.90
186	MUKTSAR	KOT BHAI AT GIDDERBAHA	AQUA	30.39900	74.58900	10/26/2021	13:26:11	D	7.90
187	MUKTSAR	MALOUT	S-NPP	30.15950	74.37490	10/26/2021	13:17:01	D	6.20
188	MUKTSAR	MALOUT	S-NPP	30.18720	74.39970	10/26/2021	13:17:01	D	6.50
189	MUKTSAR	MALOUT	S-NPP	30.21940	74.51170	10/26/2021	13:17:01	D	5.40
190	MUKTSAR	MALOUT	S-NPP	30.22310	74.51080	10/26/2021	13:17:01	D	5.40
191	MUKTSAR	MALOUT	S-NPP	30.22760	74.53550	10/26/2021	13:17:01	D	7.30
192	MUKTSAR	MALOUT	S-NPP	30.31820	74.49490	10/26/2021	13:17:01	D	12.00
193	MUKTSAR	MALOUT	AQUA	30.15800	74.36900	10/26/2021	13:26:11	D	6.80
194	MUKTSAR	MALOUT	AQUA	30.22500	74.53600	10/26/2021	13:26:11	D	7.10
195	MUKTSAR	MALOUT	AQUA	30.24600	74.46800	10/26/2021	13:26:11	D	10.30
196	MUKTSAR	MUKTSAR	S-NPP	30.47750	74.47870	10/26/2021	13:17:01	D	3.90
197	MUKTSAR	MUKTSAR	S-NPP	30.48280	74.49000	10/26/2021	13:17:01	D	3.30
198	MUKTSAR	MUKTSAR	S-NPP	30.48910	74.46260	10/26/2021	13:17:01	D	1.90
199	MUKTSAR	MUKTSAR	S-NPP	30.50590	74.67640	10/26/2021	13:17:01	D	4.60
200	MUKTSAR	MUKTSAR	S-NPP	30.51710	74.40900	10/26/2021	13:17:01	D	2.30
201	MUKTSAR	MUKTSAR	S-NPP	30.53540	74.44600	10/26/2021	13:17:01	D	2.30
202	MUKTSAR	MUKTSAR	S-NPP	30.57170	74.56070	10/26/2021	13:17:01	D	5.00
203	MUKTSAR	MUKTSAR	S-NPP	30.58430	74.56780	10/26/2021	13:17:01	D	11.10
204	MUKTSAR	MUKTSAR	S-NPP	30.58880	74.59220	10/26/2021	13:17:01	D	5.40
205	MUKTSAR	MUKTSAR	S-NPP	30.59240	74.59130	10/26/2021	13:17:01	D	6.20
206	MUKTSAR	MUKTSAR	S-NPP	30.59690	74.57490	10/26/2021	13:17:01	D	8.00
207	MUKTSAR	MUKTSAR	AQUA	30.51300	74.40000	10/26/2021	13:26:11	D	8.20
208	MUKTSAR	MUKTSAR	AQUA	30.51500	74.41500	10/26/2021	13:26:11	D	9.10
209	MUKTSAR	MUKTSAR	AQUA	30.55500	74.51400	10/26/2021	13:26:11	D	12.10
210	MUKTSAR	MUKTSAR	AQUA	30.55900	74.50700	10/26/2021	13:26:11	D	6.90
211	PATIALA	BHUNARHERI	S-NPP	30.11100	76.48080	10/26/2021	13:17:01	D	2.40
212	PATIALA	BHUNARHERI	S-NPP	30.12420	76.51730	10/26/2021	13:17:01	D	3.90
213	PATIALA	BHUNARHERI	S-NPP	30.15300	76.45830	10/26/2021	13:17:01	D	4.90

214	PATIALA	BHUNARHERI	S-NPP	30.17660	76.53630	10/26/2021	13:17:01	D	3.80
215	PATIALA	BHUNARHERI	S-NPP	30.18000	76.53560	10/26/2021	13:17:01	D	3.80
216	PATIALA	BHUNARHERI	S-NPP	30.19680	76.48880	10/26/2021	13:17:01	D	11.00
217	PATIALA	BHUNARHERI	S-NPP	30.22080	76.44390	10/26/2021	13:17:01	D	15.40
218	PATIALA	BHUNARHERI	S-NPP	30.22280	76.43470	10/26/2021	13:17:01	D	5.50
219	PATIALA	BHUNARHERI	S-NPP	30.22420	76.44320	10/26/2021	13:17:01	D	15.40
220	PATIALA	BHUNARHERI	S-NPP	30.22660	76.47780	10/26/2021	13:17:01	D	5.20
221	PATIALA	BHUNARHERI	S-NPP	30.22800	76.56930	10/26/2021	13:17:01	D	4.60
222	PATIALA	BHUNARHERI	S-NPP	30.23980	76.59720	10/26/2021	13:17:01	D	5.40
223	PATIALA	BHUNARHERI	S-NPP	30.24100	76.41740	10/26/2021	13:17:01	D	2.60
224	PATIALA	BHUNARHERI	S-NPP	30.27140	76.57710	10/26/2021	13:17:01	D	4.10
225	PATIALA	BHUNARHERI	S-NPP	30.27550	76.58060	10/26/2021	13:17:01	D	4.10
226	PATIALA	BHUNARHERI	AQUA	30.19200	76.48200	10/26/2021	13:26:11	D	7.50
227	PATIALA	BHUNARHERI	AQUA	30.22400	76.43800	10/26/2021	13:26:11	D	15.70
228	PATIALA	BHUNARHERI	AQUA	30.24000	76.53200	10/26/2021	13:26:11	D	7.00
229	PATIALA	BHUNARHERI	AQUA	30.27000	76.56800	10/26/2021	13:26:11	D	8.60
230	PATIALA	BHUNARHERI	AQUA	30.27200	76.57900	10/26/2021	13:26:11	D	15.00
231	PATIALA	GHANAUR	S-NPP	30.32020	76.57550	10/26/2021	13:17:01	D	4.00
232	PATIALA	GHANAUR	S-NPP	30.32350	76.57470	10/26/2021	13:17:01	D	3.00
233	PATIALA	GHANAUR	AQUA	30.31000	76.63100	10/26/2021	13:26:11	D	4.60
234	PATIALA	GHANAUR	AQUA	30.38500	76.64500	10/26/2021	13:26:11	D	5.60
235	PATIALA	PATIALA	S-NPP	30.35930	76.47500	10/26/2021	13:17:01	D	2.30
236	PATIALA	PATRAN	S-NPP	29.80930	76.13710	10/26/2021	13:17:01	D	6.60
237	PATIALA	PATRAN	S-NPP	29.87400	76.07720	10/26/2021	13:17:01	D	3.90
238	PATIALA	PATRAN	S-NPP	29.87570	76.21200	10/26/2021	13:17:01	D	3.30
239	PATIALA	PATRAN	S-NPP	29.87740	76.07640	10/26/2021	13:17:01	D	3.90
240	PATIALA	PATRAN	S-NPP	29.87900	76.14830	10/26/2021	13:17:01	D	2.90
241	PATIALA	PATRAN	S-NPP	29.88060	76.05310	10/26/2021	13:17:01	D	6.50
242	PATIALA	PATRAN	S-NPP	29.88760	76.11480	10/26/2021	13:17:01	D	9.20
243	PATIALA	PATRAN	S-NPP	29.90930	76.12520	10/26/2021	13:17:01	D	1.20
244	PATIALA	PATRAN	AQUA	29.85400	76.06000	10/26/2021	13:26:11	D	6.70
245	PATIALA	PATRAN	AQUA	29.88400	76.11800	10/26/2021	13:26:11	D	12.70
246	PATIALA	SAMANA	S-NPP	30.09780	76.25820	10/26/2021	13:17:01	D	4.50

247	PATIALA	SAMANA	S-NPP	30.09850	76.26250	10/26/2021	13:17:01	D	5.00
248	PATIALA	SANAUR	S-NPP	30.11990	76.34660	10/26/2021	13:17:01	D	3.80
249	PATIALA	SANAUR	S-NPP	30.12380	76.32800	10/26/2021	13:17:01	D	3.30
250	PATIALA	SANAUR	S-NPP	30.13720	76.36480	10/26/2021	13:17:01	D	10.80
251	PATIALA	SANAUR	S-NPP	30.15790	76.32030	10/26/2021	13:17:01	D	1.90
252	PATIALA	SANAUR	S-NPP	30.16310	76.33330	10/26/2021	13:17:01	D	2.20
253	PATIALA	SANAUR	S-NPP	30.18650	76.34580	10/26/2021	13:17:01	D	3.90
254	PATIALA	SANAUR	S-NPP	30.21100	76.40650	10/26/2021	13:17:01	D	8.30
255	PATIALA	SANAUR	S-NPP	30.22300	76.31100	10/26/2021	13:17:01	D	8.60
256	PATIALA	SANAUR	S-NPP	30.29260	76.45480	10/26/2021	13:17:01	D	2.10
257	PATIALA	SANAUR	S-NPP	30.29440	76.56760	10/26/2021	13:17:01	D	2.60
258	PATIALA	SANAUR	S-NPP	30.30980	76.41140	10/26/2021	13:17:01	D	4.10
259	PATIALA	SANAUR	S-NPP	30.32670	76.46910	10/26/2021	13:17:01	D	6.60
260	PATIALA	SANAUR	AQUA	30.13000	76.36600	10/26/2021	13:26:11	D	15.30
261	PATIALA	SANAUR	AQUA	30.13700	76.27100	10/26/2021	13:26:11	D	8.50
262	PATIALA	SANAUR	AQUA	30.16500	76.37700	10/26/2021	13:26:11	D	7.50
263	PATIALA	SANAUR	AQUA	30.23000	76.33100	10/26/2021	13:26:11	D	11.30
264	SANGRUR	ANDANA	S-NPP	29.77070	76.00440	10/26/2021	13:17:01	D	14.50
265	SANGRUR	ANDANA	S-NPP	29.77340	75.99920	10/26/2021	13:17:01	D	6.30
266	SANGRUR	ANDANA	S-NPP	29.77840	75.98080	10/26/2021	13:17:01	D	10.10
267	SANGRUR	ANDANA	S-NPP	29.83670	75.98570	10/26/2021	13:17:01	D	2.10
268	SANGRUR	ANDANA	AQUA	29.74000	75.93700	10/26/2021	13:26:11	D	14.20
269	SANGRUR	ANDANA	AQUA	29.79000	75.99100	10/26/2021	13:26:11	D	9.70
270	SANGRUR	ANDANA	AQUA	29.79300	75.99700	10/26/2021	13:26:11	D	10.60
271	SANGRUR	ANDANA	AQUA	29.84800	76.02300	10/26/2021	13:26:11	D	6.40
272	SANGRUR	SUNAM	S-NPP	30.10650	75.78130	10/26/2021	13:17:01	D	6.70
273	SANGRUR	SUNAM	AQUA	30.10400	75.77600	10/26/2021	13:26:11	D	9.50
274	SAS NAGAR (MOHALI)	DERABASSI	S-NPP	30.41550	76.87420	10/26/2021	13:17:01	D	6.20
275	TARN TARAN	BHIKHIWIND	S-NPP	31.29300	74.65720	10/26/2021	13:17:01	D	3.60
276	TARN TARAN	BHIKHIWIND	S-NPP	31.30430	74.76710	10/26/2021	13:17:01	D	9.50
277	TARN TARAN	BHIKHIWIND	S-NPP	31.30600	74.76830	10/26/2021	13:17:01	D	17.90
278	TARN TARAN	BHIKHIWIND	S-NPP	31.39490	74.70690	10/26/2021	13:17:01	D	1.70
279	TARN TARAN	BHIKHIWIND	AQUA	31.35100	74.71500	10/26/2021	13:26:11	D	22.60

280	TARN TARAN	BHIKHIWIND	AQUA	31.41700	74.66900	10/26/2021	13:26:11	D	6.10
281	TARN TARAN	CHOHLA SAHIB	S-NPP	31.27260	75.06270	10/26/2021	13:17:01	D	6.00
282	TARN TARAN	CHOHLA SAHIB	S-NPP	31.28170	75.03160	10/26/2021	13:17:01	D	8.40
283	TARN TARAN	CHOHLA SAHIB	AQUA	31.28400	75.03000	10/26/2021	13:26:11	D	5.90
284	TARN TARAN	GANDIWIND TATLA	S-NPP	31.41660	74.67360	10/26/2021	13:17:01	D	4.50
285	TARN TARAN	GANDIWIND TATLA	S-NPP	31.41740	74.67840	10/26/2021	13:17:01	D	5.50
286	TARN TARAN	GANDIWIND TATLA	S-NPP	31.42010	74.67270	10/26/2021	13:17:01	D	5.50
287	TARN TARAN	GANDIWIND TATLA	S-NPP	31.42100	74.67750	10/26/2021	13:17:01	D	9.40
288	TARN TARAN	GANDIWIND TATLA	S-NPP	31.47380	74.74380	10/26/2021	13:17:01	D	3.90
289	TARN TARAN	GANDIWIND TATLA	S-NPP	31.49610	74.72350	10/26/2021	13:17:01	D	2.20
290	TARN TARAN	GANDIWIND TATLA	S-NPP	31.51550	74.72860	10/26/2021	13:17:01	D	13.40
291	TARN TARAN	GANDIWIND TATLA	S-NPP	31.51640	74.72510	10/26/2021	13:17:01	D	14.90
292	TARN TARAN	GANDIWIND TATLA	S-NPP	31.51820	74.73460	10/26/2021	13:17:01	D	7.10
293	TARN TARAN	GANDIWIND TATLA	S-NPP	31.52170	74.73370	10/26/2021	13:17:01	D	7.10
294	TARN TARAN	GANDIWIND TATLA	AQUA	31.51200	74.74100	10/26/2021	13:26:11	D	8.70
295	TARN TARAN	GANDIWIND TATLA	AQUA	31.51900	74.73500	10/26/2021	13:26:11	D	7.80
296	TARN TARAN	KHADUR SAHIB	S-NPP	31.36150	75.15160	10/26/2021	13:17:01	D	4.70
297	TARN TARAN	KHADUR SAHIB	S-NPP	31.37010	75.15900	10/26/2021	13:17:01	D	13.90
298	TARN TARAN	KHADUR SAHIB	S-NPP	31.38420	75.03720	10/26/2021	13:17:01	D	3.80
299	TARN TARAN	KHADUR SAHIB	S-NPP	31.42470	75.16160	10/26/2021	13:17:01	D	4.40
300	TARN TARAN	KHADUR SAHIB	S-NPP	31.43430	75.15450	10/26/2021	13:17:01	D	4.80
301	TARN TARAN	KHADUR SAHIB	S-NPP	31.47510	75.22070	10/26/2021	13:17:01	D	7.20
302	TARN TARAN	KHADUR SAHIB	S-NPP	31.47860	75.21990	10/26/2021	13:17:01	D	7.20
303	TARN TARAN	KHADUR SAHIB	S-NPP	31.48520	75.15330	10/26/2021	13:17:01	D	2.60
304	TARN TARAN	KHADUR SAHIB	S-NPP	31.49420	75.20340	10/26/2021	13:17:01	D	6.80
305	TARN TARAN	KHADUR SAHIB	AQUA	31.36800	75.15700	10/26/2021	13:26:11	D	13.50
306	TARN TARAN	KHADUR SAHIB	AQUA	31.42800	75.15100	10/26/2021	13:26:11	D	6.80
307	TARN TARAN	KHADUR SAHIB	AQUA	31.47200	75.22300	10/26/2021	13:26:11	D	17.20
308	TARN TARAN	NAUSHERA PANNUAN	S-NPP	31.30890	74.93770	10/26/2021	13:17:01	D	3.00
309	TARN TARAN	NAUSHERA PANNUAN	S-NPP	31.32650	74.93340	10/26/2021	13:17:01	D	2.30
310	TARN TARAN	NAUSHERA PANNUAN	S-NPP	31.33610	74.94570	10/26/2021	13:17:01	D	4.90
311	TARN TARAN	NAUSHERA PANNUAN	S-NPP	31.34570	74.92540	10/26/2021	13:17:01	D	4.10
312	TARN TARAN	NAUSHERA PANNUAN	S-NPP	31.36020	74.98500	10/26/2021	13:17:01	D	2.10

313	TARN TARAN	NAUSHERA PANNUAN	S-NPP	31.40460	75.00810	10/26/2021	13:17:01	D	5.40
314	TARN TARAN	PATTI	S-NPP	31.16650	74.79380	10/26/2021	13:17:01	D	30.60
315	TARN TARAN	PATTI	S-NPP	31.21900	74.80760	10/26/2021	13:17:01	D	2.40
316	TARN TARAN	PATTI	S-NPP	31.22330	74.83120	10/26/2021	13:17:01	D	6.50
317	TARN TARAN	PATTI	S-NPP	31.25760	74.85730	10/26/2021	13:17:01	D	5.30
318	TARN TARAN	PATTI	S-NPP	31.27320	74.77960	10/26/2021	13:17:01	D	2.80
319	TARN TARAN	PATTI	S-NPP	31.27770	74.88670	10/26/2021	13:17:01	D	4.30
320	TARN TARAN	PATTI	S-NPP	31.27780	74.76370	10/26/2021	13:17:01	D	3.20
321	TARN TARAN	PATTI	S-NPP	31.28120	74.88590	10/26/2021	13:17:01	D	4.30
322	TARN TARAN	PATTI	S-NPP	31.29250	74.90760	10/26/2021	13:17:01	D	2.90
323	TARN TARAN	PATTI	S-NPP	31.31990	74.89600	10/26/2021	13:17:01	D	7.10
324	TARN TARAN	PATTI	S-NPP	31.34170	74.86290	10/26/2021	13:17:01	D	3.70
325	TARN TARAN	PATTI	S-NPP	31.35120	74.89480	10/26/2021	13:17:01	D	2.50
326	TARN TARAN	PATTI	AQUA	31.15700	74.78900	10/26/2021	13:26:11	D	24.70
327	TARN TARAN	PATTI	AQUA	31.15900	74.80300	10/26/2021	13:26:11	D	9.80
328	TARN TARAN	PATTI	AQUA	31.16100	74.79300	10/26/2021	13:26:11	D	46.00
329	TARN TARAN	TARN TARAN	S-NPP	31.40020	74.81920	10/26/2021	13:17:01	D	8.70

Details of residue burning events in Haryana on 26-Oct-2021

S. No.	District	Tehsil / Block	Satellite	Latitude	Longitude	ACQ_DATE	ACQ_TIME	Day / Night	Fire Power (W/m ²)
1	AMBALA	AMBALA-II	S-NPP	30.07770	76.61440	10/26/2021	13:17:01	D	2.00
2	AMBALA	AMBALA-II	S-NPP	30.08110	76.61370	10/26/2021	13:17:01	D	2.30
3	AMBALA	AMBALA-II	S-NPP	30.18760	76.66460	10/26/2021	13:17:01	D	2.20
4	AMBALA	AMBALA-II	S-NPP	30.21860	76.80900	10/26/2021	13:17:01	D	2.80
5	AMBALA	AMBALA-II	S-NPP	30.22040	76.62760	10/26/2021	13:17:01	D	5.20
6	AMBALA	AMBALA-II	S-NPP	30.23070	76.81930	10/26/2021	13:17:01	D	2.00
7	AMBALA	AMBALA-II	S-NPP	30.24490	76.56560	10/26/2021	13:17:01	D	3.00
8	AMBALA	AMBALA-II	S-NPP	30.24560	76.56980	10/26/2021	13:17:01	D	3.00
9	AMBALA	AMBALA-II	S-NPP	30.26900	76.87590	10/26/2021	13:17:01	D	1.70
10	AMBALA	AMBALA-II	S-NPP	30.27120	76.76360	10/26/2021	13:17:01	D	2.00
11	AMBALA	AMBALA-II	S-NPP	30.27880	76.80930	10/26/2021	13:17:01	D	2.80
12	AMBALA	AMBALA-II	S-NPP	30.28220	76.80860	10/26/2021	13:17:01	D	4.20
13	AMBALA	AMBALA-II	S-NPP	30.28720	76.88050	10/26/2021	13:17:01	D	4.00
14	AMBALA	AMBALA-II	S-NPP	30.29660	76.72780	10/26/2021	13:17:01	D	2.10
15	AMBALA	BARARA	S-NPP	30.17750	76.98080	10/26/2021	13:17:01	D	1.90
16	AMBALA	BARARA	S-NPP	30.17820	76.98500	10/26/2021	13:17:01	D	2.20
17	AMBALA	BARARA	S-NPP	30.25200	77.01150	10/26/2021	13:17:01	D	3.80
18	AMBALA	NARAINGARH	S-NPP	30.44280	77.08140	10/26/2021	13:17:01	D	2.70
19	AMBALA	SAHA	S-NPP	30.32240	76.98820	10/26/2021	13:17:01	D	3.00
20	FARIDABAD	BALLABGARH	S-NPP	28.23610	77.34710	10/26/2021	13:17:01	D	2.60
21	FATEHABAD	BHUNA	S-NPP	29.54390	75.70380	10/26/2021	13:17:01	D	5.10
22	FATEHABAD	BHUNA	S-NPP	29.55910	75.83080	10/26/2021	13:17:01	D	2.70
23	FATEHABAD	BHUNA	S-NPP	29.61470	75.73430	10/26/2021	13:17:01	D	1.70
24	FATEHABAD	BHUNA	S-NPP	29.61590	75.76200	10/26/2021	13:17:01	D	3.50
25	FATEHABAD	BHUNA	AQUA	29.61300	75.73200	10/26/2021	13:26:11	D	10.60
26	FATEHABAD	JAKHAL	S-NPP	29.70610	75.75670	10/26/2021	13:17:01	D	4.30
27	FATEHABAD	JAKHAL	S-NPP	29.76720	75.79480	10/26/2021	13:17:01	D	20.00
28	FATEHABAD	JAKHAL	S-NPP	29.79880	75.72710	10/26/2021	13:17:01	D	8.50
29	FATEHABAD	JAKHAL	AQUA	29.78000	75.74800	10/26/2021	13:26:11	D	9.00

30	FATEHABAD	JAKHAL	AQUA	29.78300	75.76100	10/26/2021	13:26:11	D	9.20
31	FATEHABAD	JAKHAL	AQUA	29.79600	75.71800	10/26/2021	13:26:11	D	17.10
32	FATEHABAD	RATIA	S-NPP	29.60550	75.49730	10/26/2021	13:17:01	D	4.80
33	FATEHABAD	TOHANA	S-NPP	29.56770	75.87970	10/26/2021	13:17:01	D	3.70
34	FATEHABAD	TOHANA	S-NPP	29.62910	75.79620	10/26/2021	13:17:01	D	3.40
35	FATEHABAD	TOHANA	S-NPP	29.65340	75.91550	10/26/2021	13:17:01	D	5.20
36	FATEHABAD	TOHANA	S-NPP	29.67470	75.94850	10/26/2021	13:17:01	D	8.60
37	FATEHABAD	TOHANA	S-NPP	29.70070	75.80900	10/26/2021	13:17:01	D	3.20
38	FATEHABAD	TOHANA	S-NPP	29.72470	75.94630	10/26/2021	13:17:01	D	3.50
39	JIND	NARWANA	S-NPP	29.57180	76.06660	10/26/2021	13:17:01	D	1.40
40	JIND	NARWANA	S-NPP	29.63780	76.17840	10/26/2021	13:17:01	D	2.50
41	JIND	NARWANA	S-NPP	29.67820	76.07090	10/26/2021	13:17:01	D	3.70
42	JIND	NARWANA	S-NPP	29.69930	76.04790	10/26/2021	13:17:01	D	10.10
43	JIND	NARWANA	S-NPP	29.70500	76.10110	10/26/2021	13:17:01	D	8.70
44	JIND	NARWANA	AQUA	29.63700	76.17300	10/26/2021	13:26:11	D	7.00
45	JIND	NARWANA	AQUA	29.79400	76.19600	10/26/2021	13:26:11	D	18.20
46	JIND	NARWANA	AQUA	29.79600	76.20800	10/26/2021	13:26:11	D	8.60
47	JIND	PILLUKHERA	S-NPP	29.31430	76.56240	10/26/2021	13:17:01	D	2.00
48	JIND	PILLUKHERA	S-NPP	29.37380	76.47970	10/26/2021	13:17:01	D	5.10
49	JIND	SAFIDON	S-NPP	29.43020	76.60370	10/26/2021	13:17:01	D	7.10
50	JIND	SAFIDON	S-NPP	29.44910	76.59580	10/26/2021	13:17:01	D	6.10
51	JIND	UCHANA	S-NPP	29.43680	76.23460	10/26/2021	13:17:01	D	3.60
52	KAITHAL	GUHLA	S-NPP	29.95210	76.29030	10/26/2021	13:17:01	D	4.60
53	KAITHAL	GUHLA	S-NPP	29.96720	76.29580	10/26/2021	13:17:01	D	12.10
54	KAITHAL	GUHLA	S-NPP	29.99360	76.26310	10/26/2021	13:17:01	D	4.00
55	KAITHAL	GUHLA	S-NPP	29.99430	76.26740	10/26/2021	13:17:01	D	6.30
56	KAITHAL	GUHLA	S-NPP	30.01540	76.39140	10/26/2021	13:17:01	D	4.60
57	KAITHAL	GUHLA	S-NPP	30.01580	76.28930	10/26/2021	13:17:01	D	3.70
58	KAITHAL	GUHLA	S-NPP	30.03170	76.38330	10/26/2021	13:17:01	D	2.10
59	KAITHAL	GUHLA	S-NPP	30.03600	76.24990	10/26/2021	13:17:01	D	2.70
60	KAITHAL	GUHLA	S-NPP	30.05310	76.24600	10/26/2021	13:17:01	D	3.20
61	KAITHAL	GUHLA	S-NPP	30.08440	76.28350	10/26/2021	13:17:01	D	2.50
62	KAITHAL	GUHLA	S-NPP	30.08490	76.26560	10/26/2021	13:17:01	D	12.20

63	KAITHAL	GUHLA	S-NPP	30.09930	76.26680	10/26/2021	13:17:01	D	5.00
64	KAITHAL	GUHLA	S-NPP	30.12200	76.42120	10/26/2021	13:17:01	D	2.50
65	KAITHAL	GUHLA	S-NPP	30.14040	76.42590	10/26/2021	13:17:01	D	1.50
66	KAITHAL	GUHLA	S-NPP	30.14380	76.42510	10/26/2021	13:17:01	D	3.10
67	KAITHAL	GUHLA	AQUA	30.01100	76.38700	10/26/2021	13:26:11	D	13.30
68	KAITHAL	GUHLA	AQUA	30.01600	76.29800	10/26/2021	13:26:11	D	9.40
69	KAITHAL	GUHLA	AQUA	30.01800	76.31000	10/26/2021	13:26:11	D	13.80
70	KAITHAL	GUHLA	AQUA	30.02200	76.39600	10/26/2021	13:26:11	D	14.70
71	KAITHAL	GUHLA	AQUA	30.07600	76.27800	10/26/2021	13:26:11	D	20.60
72	KAITHAL	GUHLA	AQUA	30.13200	76.36000	10/26/2021	13:26:11	D	19.90
73	KAITHAL	KAITHAL	S-NPP	29.73210	76.37630	10/26/2021	13:17:01	D	3.60
74	KAITHAL	KAITHAL	S-NPP	29.80640	76.48430	10/26/2021	13:17:01	D	7.80
75	KAITHAL	KAITHAL	S-NPP	29.85030	76.43040	10/26/2021	13:17:01	D	2.00
76	KAITHAL	KAITHAL	S-NPP	29.85290	76.43050	10/26/2021	13:17:01	D	2.90
77	KAITHAL	KAITHAL	S-NPP	29.89760	76.46470	10/26/2021	13:17:01	D	2.10
78	KAITHAL	KAITHAL	AQUA	29.77900	76.46300	10/26/2021	13:26:11	D	7.90
79	KAITHAL	KAITHAL	AQUA	29.85900	76.40800	10/26/2021	13:26:11	D	6.00
80	KAITHAL	KALAYAT	S-NPP	29.70800	76.29710	10/26/2021	13:17:01	D	4.20
81	KAITHAL	PUNDRI	S-NPP	29.71230	76.61400	10/26/2021	13:17:01	D	2.00
82	KAITHAL	PUNDRI	S-NPP	29.73210	76.62710	10/26/2021	13:17:01	D	4.20
83	KAITHAL	PUNDRI	S-NPP	29.73290	76.65300	10/26/2021	13:17:01	D	1.50
84	KAITHAL	PUNDRI	S-NPP	29.77370	76.66580	10/26/2021	13:17:01	D	2.90
85	KAITHAL	PUNDRI	S-NPP	29.78190	76.62990	10/26/2021	13:17:01	D	5.90
86	KAITHAL	PUNDRI	S-NPP	29.86400	76.63790	10/26/2021	13:17:01	D	1.90
87	KAITHAL	PUNDRI	S-NPP	29.89750	76.69190	10/26/2021	13:17:01	D	3.40
88	KAITHAL	PUNDRI	S-NPP	29.89770	76.63100	10/26/2021	13:17:01	D	2.40
89	KAITHAL	PUNDRI	AQUA	29.71100	76.63700	10/26/2021	13:26:11	D	16.60
90	KAITHAL	PUNDRI	AQUA	29.71700	76.64100	10/26/2021	13:26:11	D	7.90
91	KAITHAL	PUNDRI	AQUA	29.72400	76.62800	10/26/2021	13:26:11	D	7.70
92	KAITHAL	RAJOUND	S-NPP	29.60360	76.42650	10/26/2021	13:17:01	D	6.50
93	KAITHAL	RAJOUND	S-NPP	29.63800	76.40610	10/26/2021	13:17:01	D	9.80
94	KAITHAL	SIWAN	S-NPP	29.89290	76.39510	10/26/2021	13:17:01	D	4.30
95	KAITHAL	SIWAN	S-NPP	29.90800	76.33850	10/26/2021	13:17:01	D	4.30

96	KAITHAL	SIWAN	S-NPP	29.92550	76.19800	10/26/2021	13:17:01	D	6.90
97	KAITHAL	SIWAN	AQUA	29.92600	76.18000	10/26/2021	13:26:11	D	10.00
98	KAITHAL	SIWAN	AQUA	29.92800	76.19200	10/26/2021	13:26:11	D	13.10
99	KARNAL	ASSANDH	S-NPP	29.45170	76.50730	10/26/2021	13:17:01	D	2.00
100	KARNAL	ASSANDH	S-NPP	29.48060	76.69800	10/26/2021	13:17:01	D	2.30
101	KARNAL	ASSANDH	S-NPP	29.51720	76.58070	10/26/2021	13:17:01	D	5.60
102	KARNAL	ASSANDH	S-NPP	29.54000	76.86250	10/26/2021	13:17:01	D	1.80
103	KARNAL	ASSANDH	S-NPP	29.57780	76.75190	10/26/2021	13:17:01	D	8.30
104	KARNAL	ASSANDH	S-NPP	29.61840	76.55540	10/26/2021	13:17:01	D	2.40
105	KARNAL	ASSANDH	AQUA	29.60800	76.75000	10/26/2021	13:26:11	D	7.80
106	KARNAL	ASSANDH	AQUA	29.61000	76.76200	10/26/2021	13:26:11	D	15.20
107	KARNAL	ASSANDH	AQUA	29.66000	76.68500	10/26/2021	13:26:11	D	6.90
108	KARNAL	CHIRAO	S-NPP	29.61970	76.72970	10/26/2021	13:17:01	D	2.50
109	KARNAL	CHIRAO	S-NPP	29.63580	76.82570	10/26/2021	13:17:01	D	3.60
110	KARNAL	CHIRAO	S-NPP	29.63620	76.76510	10/26/2021	13:17:01	D	1.40
111	KARNAL	CHIRAO	S-NPP	29.70690	76.81050	10/26/2021	13:17:01	D	4.00
112	KARNAL	CHIRAO	S-NPP	29.74030	76.86350	10/26/2021	13:17:01	D	1.20
113	KARNAL	CHIRAO	S-NPP	29.78320	76.80670	10/26/2021	13:17:01	D	5.20
114	KARNAL	CHIRAO	AQUA	29.57600	76.85300	10/26/2021	13:26:11	D	11.70
115	KARNAL	CHIRAO	AQUA	29.69100	76.92900	10/26/2021	13:26:11	D	4.30
116	KARNAL	CHIRAO	AQUA	29.70600	76.78300	10/26/2021	13:26:11	D	9.20
117	KARNAL	CHIRAO	AQUA	29.70800	76.79500	10/26/2021	13:26:11	D	10.00
118	KARNAL	GHARAUNDA	S-NPP	29.50180	76.92680	10/26/2021	13:17:01	D	1.30
119	KARNAL	GHARAUNDA	S-NPP	29.52800	76.89530	10/26/2021	13:17:01	D	1.50
120	KARNAL	GHARAUNDA	S-NPP	29.52930	77.04910	10/26/2021	13:17:01	D	1.70
121	KARNAL	GHARAUNDA	S-NPP	29.60250	77.02900	10/26/2021	13:17:01	D	2.90
122	KARNAL	INDRI	S-NPP	29.91480	77.00610	10/26/2021	13:17:01	D	4.00
123	KARNAL	INDRI	AQUA	29.90700	77.00000	10/26/2021	13:26:11	D	8.20
124	KARNAL	KARNAL	S-NPP	29.69760	76.92400	10/26/2021	13:17:01	D	2.20
125	KARNAL	KARNAL	S-NPP	29.72780	76.93500	10/26/2021	13:17:01	D	3.00
126	KARNAL	KARNAL	S-NPP	29.72790	76.95640	10/26/2021	13:17:01	D	1.10
127	KARNAL	NILOKHERI	S-NPP	29.74300	76.85860	10/26/2021	13:17:01	D	2.30
128	KARNAL	NILOKHERI	S-NPP	29.78790	76.70690	10/26/2021	13:17:01	D	2.50

129	KARNAL	NILOKHERI	S-NPP	29.82070	76.85950	10/26/2021	13:17:01	D	2.00
130	KURUKSHETRA	ISMAILABAD	S-NPP	30.04230	76.69610	10/26/2021	13:17:01	D	9.30
131	KURUKSHETRA	ISMAILABAD	S-NPP	30.05090	76.66390	10/26/2021	13:17:01	D	3.80
132	KURUKSHETRA	ISMAILABAD	S-NPP	30.07770	76.74030	10/26/2021	13:17:01	D	3.10
133	KURUKSHETRA	ISMAILABAD	S-NPP	30.07790	76.65790	10/26/2021	13:17:01	D	1.30
134	KURUKSHETRA	ISMAILABAD	S-NPP	30.14620	76.64770	10/26/2021	13:17:01	D	2.50
135	KURUKSHETRA	ISMAILABAD	AQUA	30.04200	76.69700	10/26/2021	13:26:11	D	12.70
136	KURUKSHETRA	ISMAILABAD	AQUA	30.04600	76.66000	10/26/2021	13:26:11	D	5.90
137	KURUKSHETRA	PEHOWA	S-NPP	29.96180	76.48990	10/26/2021	13:17:01	D	6.90
138	KURUKSHETRA	PEHOWA	S-NPP	29.98610	76.67670	10/26/2021	13:17:01	D	11.90
139	KURUKSHETRA	PEHOWA	S-NPP	29.98790	76.49890	10/26/2021	13:17:01	D	4.30
140	KURUKSHETRA	PEHOWA	S-NPP	30.00450	76.70300	10/26/2021	13:17:01	D	2.60
141	KURUKSHETRA	PEHOWA	S-NPP	30.00520	76.70430	10/26/2021	13:17:01	D	4.30
142	KURUKSHETRA	PEHOWA	S-NPP	30.01320	76.44040	10/26/2021	13:17:01	D	3.60
143	KURUKSHETRA	PEHOWA	S-NPP	30.01430	76.65460	10/26/2021	13:17:01	D	3.60
144	KURUKSHETRA	PEHOWA	S-NPP	30.03430	76.60660	10/26/2021	13:17:01	D	5.60
145	KURUKSHETRA	PEHOWA	S-NPP	30.03760	76.60590	10/26/2021	13:17:01	D	6.10
146	KURUKSHETRA	PEHOWA	S-NPP	30.05500	76.47950	10/26/2021	13:17:01	D	5.10
147	KURUKSHETRA	PEHOWA	S-NPP	30.06090	76.53520	10/26/2021	13:17:01	D	3.30
148	KURUKSHETRA	PEHOWA	S-NPP	30.06160	76.45600	10/26/2021	13:17:01	D	2.10
149	KURUKSHETRA	PEHOWA	AQUA	30.04000	76.68600	10/26/2021	13:26:11	D	7.20
150	KURUKSHETRA	PEHOWA	AQUA	30.05500	76.47600	10/26/2021	13:26:11	D	8.90
151	KURUKSHETRA	PEHOWA	AQUA	30.05600	76.45600	10/26/2021	13:26:11	D	6.00
152	KURUKSHETRA	THANESAR	S-NPP	29.93780	76.86880	10/26/2021	13:17:01	D	2.90
153	KURUKSHETRA	THANESAR	S-NPP	29.98580	76.75910	10/26/2021	13:17:01	D	7.00
154	KURUKSHETRA	THANESAR	S-NPP	29.99460	76.74850	10/26/2021	13:17:01	D	3.30
155	KURUKSHETRA	THANESAR	S-NPP	30.02100	76.73550	10/26/2021	13:17:01	D	4.80
156	KURUKSHETRA	THANESAR	S-NPP	30.03060	76.77220	10/26/2021	13:17:01	D	1.20
157	KURUKSHETRA	THANESAR	AQUA	29.95400	76.72200	10/26/2021	13:26:11	D	6.80
158	KURUKSHETRA	THANESAR	AQUA	30.01800	76.72700	10/26/2021	13:26:11	D	10.80
159	KURUKSHETRA	THANESAR	AQUA	30.02000	76.73800	10/26/2021	13:26:11	D	15.00
160	PALWAL	HASSANPUR	S-NPP	27.92860	77.50220	10/26/2021	13:17:01	D	2.90
161	PALWAL	PALWAL	AQUA	28.16500	77.49100	10/26/2021	13:26:11	D	6.80

162	PANIPAT	MADLAUDA	S-NPP	29.42660	76.91680	10/26/2021	13:17:01	D	2.90
163	SIRSA	BARAGUNDA	S-NPP	29.70720	75.19000	10/26/2021	13:17:01	D	5.00
164	SIRSA	BARAGUNDA	S-NPP	29.71160	75.19390	10/26/2021	13:17:01	D	19.90
165	SIRSA	DABWALI	S-NPP	29.94380	74.79170	10/26/2021	13:17:01	D	3.30
166	YAMUNANAGAR	BILASPUR	S-NPP	30.28940	77.24070	10/26/2021	13:17:01	D	2.40
167	YAMUNANAGAR	MUSTAFABAD	S-NPP	30.24210	77.16230	10/26/2021	13:17:01	D	4.10
168	YAMUNANAGAR	RADDAUR	S-NPP	29.97050	77.15550	10/26/2021	13:17:01	D	3.00
169	YAMUNANAGAR	RADDAUR	S-NPP	29.97120	77.15960	10/26/2021	13:17:01	D	3.00
170	YAMUNANAGAR	RADDAUR	S-NPP	29.97170	77.15560	10/26/2021	13:17:01	D	6.30
171	YAMUNANAGAR	RADDAUR	S-NPP	29.99910	77.15390	10/26/2021	13:17:01	D	1.30
172	YAMUNANAGAR	RADDAUR	S-NPP	30.07690	77.07040	10/26/2021	13:17:01	D	3.10
173	YAMUNANAGAR	RADDAUR	S-NPP	30.10450	77.13240	10/26/2021	13:17:01	D	2.40
174	YAMUNANAGAR	RADDAUR	S-NPP	30.10780	77.13170	10/26/2021	13:17:01	D	2.40
175	YAMUNANAGAR	SADHAURA	S-NPP	30.44150	77.20020	10/26/2021	13:17:01	D	2.60

Details of residue burning events in Uttar Pradesh on 26-Oct-2021

S. No.	District	Tehsil / Block	Satellite	Latitude	Longitude	ACQ_DATE	ACQ_TIME	Day / Night	Fire Power (W/m2)
1	ALIGARH	KHAIR	S-NPP	27.95190	77.60200	10/26/2021	13:17:01	D	1.50
2	ALIGARH	KHAIR	S-NPP	28.08450	77.66240	10/26/2021	13:17:01	D	2.20
3	AURAIYA	AURAIYA	S-NPP	26.57380	79.27670	10/26/2021	13:17:01	D	1.60
4	AURAIYA	BIDHUNA	S-NPP	26.64270	79.47920	10/26/2021	02:07:01	N	0.70
5	BARABANKI	FATEHPUR	S-NPP	27.13580	81.27390	10/26/2021	13:17:01	D	3.30
6	BARABANKI	FATEHPUR	S-NPP	27.22110	81.21310	10/26/2021	13:17:01	D	3.00
7	BARABANKI	H AidARGARH	S-NPP	26.75920	81.34510	10/26/2021	13:17:01	D	2.70
8	BAREILLY	BAHERI	S-NPP	28.83350	79.42770	10/26/2021	13:17:01	D	3.20
9	BAREILLY	BAHERI	S-NPP	28.86650	79.53480	10/26/2021	13:17:01	D	2.50
10	BIJNOR	AFZALGARH	S-NPP	29.40860	78.73010	10/26/2021	13:17:01	D	2.10
11	ETAWAH	BHARTHNA	S-NPP	26.72980	79.32260	10/26/2021	13:17:01	D	2.70
12	FATEHPUR	BINKI	S-NPP	25.90480	80.63240	10/26/2021	13:17:01	D	2.70
13	FATEHPUR	FATEHPUR	S-NPP	25.84900	80.64160	10/26/2021	13:17:01	D	3.00
14	FATEHPUR	FATEHPUR	S-NPP	25.93210	80.91500	10/26/2021	13:17:01	D	3.00
15	FATEHPUR	FATEHPUR	S-NPP	25.96910	80.76840	10/26/2021	13:17:01	D	8.80
16	FATEHPUR	FATEHPUR	AQUA	25.97100	80.76200	10/26/2021	13:26:11	D	6.90
17	FIROZABAD	SIKOHABAD	S-NPP	27.05270	78.65530	10/26/2021	13:17:01	D	4.30
18	GAUTAMBUDHNAGAR	JEVAR	S-NPP	28.12660	77.53290	10/26/2021	13:17:01	D	2.50
19	KHERI	GOLA	S-NPP	27.88470	80.31190	10/26/2021	13:17:01	D	2.30
20	KHERI	GOLA	S-NPP	28.13630	80.48770	10/26/2021	13:17:01	D	2.60
21	KHERI	MOHMADI	S-NPP	28.00630	80.26160	10/26/2021	13:17:01	D	2.60
22	LUCKNOW	MOHANLAL GANJ	S-NPP	26.70950	81.13840	10/26/2021	13:17:01	D	2.20
23	MAINPURI	BHOGAON	S-NPP	27.15620	79.14610	10/26/2021	13:17:01	D	2.40
24	MATHURA	CHHATA	S-NPP	27.77520	77.50460	10/26/2021	13:17:01	D	3.10
25	MATHURA	CHHATA	S-NPP	27.78120	77.60380	10/26/2021	13:17:01	D	3.80
26	MATHURA	CHHATA	AQUA	27.76800	77.50500	10/26/2021	13:26:11	D	6.80
27	PILHIBHIT	PURANPUR	S-NPP	28.36160	80.19320	10/26/2021	13:17:01	D	3.50
28	PILHIBHIT	PURANPUR	S-NPP	28.42760	80.16100	10/26/2021	13:17:01	D	4.60
29	PILHIBHIT	PURANPUR	S-NPP	28.49530	80.09550	10/26/2021	13:17:01	D	4.00

30	PILHIBHIT	PURANPUR	AQUA	28.35700	80.19400	10/26/2021	13:26:11	D	4.90
31	PILHIBHIT	PURANPUR	AQUA	28.49100	80.09500	10/26/2021	13:26:11	D	7.00
32	RAMPUR	MILAK	S-NPP	28.68690	79.23770	10/26/2021	13:17:01	D	2.60
33	RAMPUR	SUAR	S-NPP	28.96430	79.16810	10/26/2021	13:17:01	D	1.20
34	SHAHJAHANPUR	PUWANYA	AQUA	28.25600	79.99000	10/26/2021	13:26:11	D	8.30
35	SHAHJAHANPUR	PUWANYA	AQUA	28.32300	80.21000	10/26/2021	13:26:11	D	6.20
36	SHAMLI	KAIRANA	S-NPP	29.60410	77.16480	10/26/2021	13:17:01	D	1.70
37	SHAMLI	KAIRANA	AQUA	29.55800	77.19200	10/26/2021	13:26:11	D	4.90
38	SHARANPUR	NAKUR	S-NPP	29.97300	77.29850	10/26/2021	13:17:01	D	3.00
39	SHRAWASTI	IKAUNA	S-NPP	27.60080	81.82220	10/26/2021	13:17:01	D	3.50
40	SITAPUR	LAHARPUR	S-NPP	27.75730	80.83870	10/26/2021	13:17:01	D	3.00
41	SITAPUR	MAHMUDABAD	S-NPP	27.25270	81.18720	10/26/2021	13:17:01	D	3.80

Details of residue burning events in Rajasthan on 26-Oct-2021

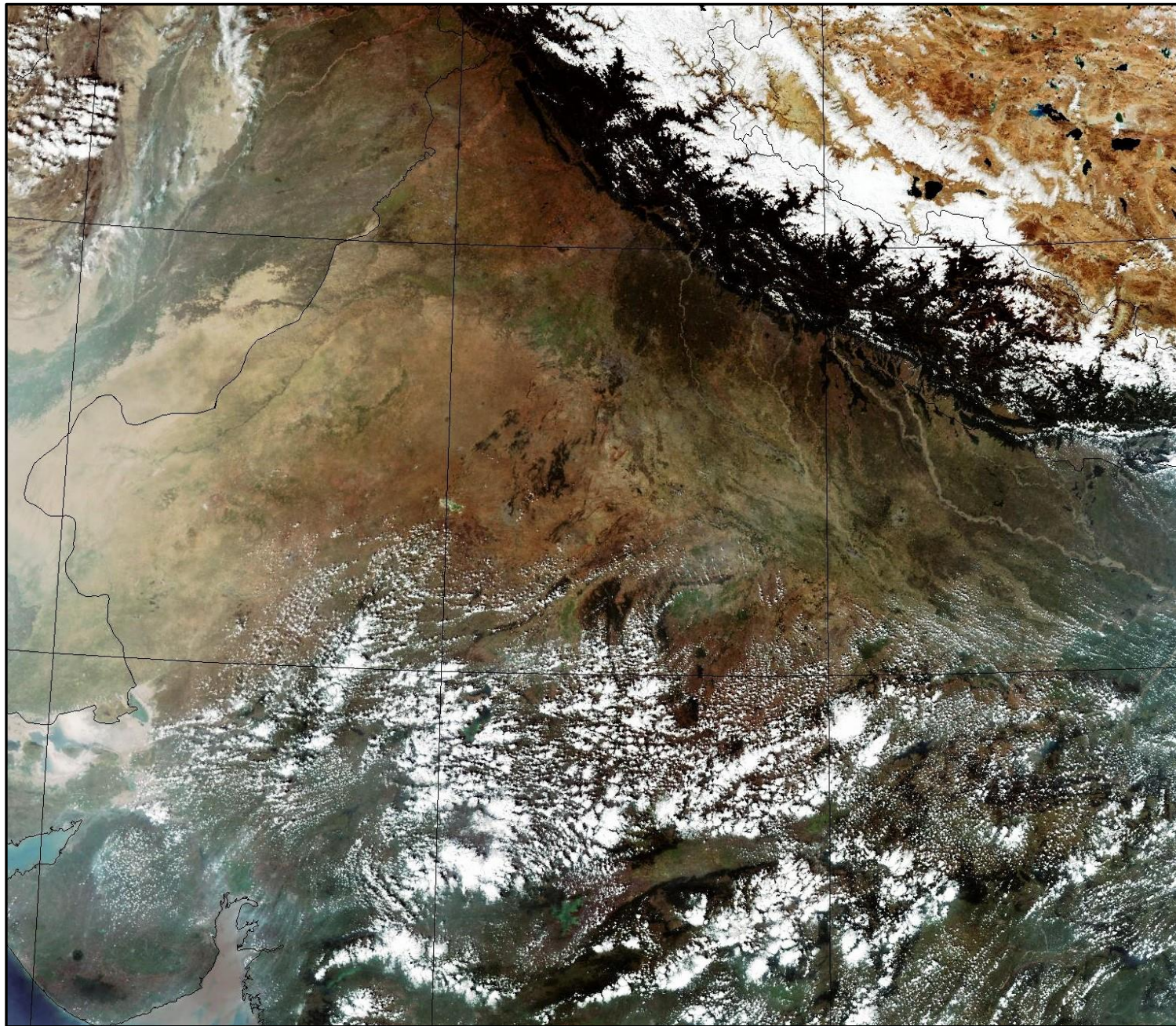
S. No.	District	Tehsil / Block	Satellite	Latitude	Longitude	ACQ_DATE	ACQ_TIME	Day / Night	Fire Power (W/m2)
1	HANUMANGARH	HANUMANGARH	S-NPP	29.51850	74.18320	10/26/2021	13:17:01	D	4.10
2	HANUMANGARH	TIBI	S-NPP	29.51540	74.54530	10/26/2021	13:17:01	D	2.10
3	HANUMANGARH	TIBI	S-NPP	29.52170	74.53030	10/26/2021	13:17:01	D	2.80

Details of residue burning events in Madhya Pradesh on 26-Oct-2021

S. No.	District	Tehsil / Block	Satellite	Latitude	Longitude	ACQ_DATE	ACQ_TIME	Day / Night	Fire Power (W/m ²)
1	CHHINDWARA	CHAURAI	S-NPP	22.12130	79.29690	10/26/2021	13:17:01	D	2.40
2	DAMOH	TENDUKHERA	S-NPP	23.39900	79.55060	10/26/2021	13:17:01	D	4.30
3	GWALIOR	DABRA	S-NPP	25.81820	78.19690	10/26/2021	13:17:01	D	3.30
4	GWALIOR	DABRA	S-NPP	25.84110	78.18830	10/26/2021	13:17:01	D	2.40
5	HARDA	HARDA	S-NPP	22.30120	77.09320	10/26/2021	13:17:01	D	3.10
6	HOSHANGABAD	BABAI	S-NPP	22.70250	77.99650	10/26/2021	13:17:01	D	3.10
7	HOSHANGABAD	BANKHERI	S-NPP	22.81000	78.52080	10/26/2021	13:17:01	D	4.20
8	HOSHANGABAD	BANKHERI	S-NPP	22.81050	78.52060	10/26/2021	13:17:01	D	3.20
9	HOSHANGABAD	BANKHERI	S-NPP	22.83350	78.57780	10/26/2021	13:17:01	D	2.90
10	HOSHANGABAD	HOSHANGABAD	S-NPP	22.62540	77.66840	10/26/2021	13:17:01	D	3.40
11	HOSHANGABAD	HOSHANGABAD	S-NPP	22.66080	77.72730	10/26/2021	13:17:01	D	6.80
12	HOSHANGABAD	HOSHANGABAD	S-NPP	22.70650	77.65740	10/26/2021	13:17:01	D	3.60
13	HOSHANGABAD	HOSHANGABAD	S-NPP	22.71000	77.65670	10/26/2021	13:17:01	D	3.60
14	HOSHANGABAD	ITARSI	S-NPP	22.56580	77.61820	10/26/2021	13:17:01	D	2.30
15	HOSHANGABAD	ITARSI	S-NPP	22.58410	77.80810	10/26/2021	13:17:01	D	2.70
16	HOSHANGABAD	PIPARIYA	S-NPP	22.66860	78.34060	10/26/2021	13:17:01	D	4.00
17	HOSHANGABAD	SEONI MALWA	S-NPP	22.50070	77.46920	10/26/2021	13:17:01	D	2.70
18	HOSHANGABAD	SEONI MALWA	S-NPP	22.60370	77.49920	10/26/2021	13:17:01	D	6.70
19	HOSHANGABAD	SEONI MALWA	AQUA	22.38500	77.45300	10/26/2021	13:26:11	D	11.90
20	HOSHANGABAD	SEONI MALWA	AQUA	22.59900	77.50200	10/26/2021	13:26:11	D	11.90
21	JABALPUR	KUNDAM	S-NPP	23.18650	80.12280	10/26/2021	13:17:01	D	2.00
22	JABALPUR	SAHPURA	S-NPP	23.18120	79.76110	10/26/2021	13:17:01	D	6.80
23	JABALPUR	SAHPURA	AQUA	23.19800	79.63700	10/26/2021	13:26:11	D	9.90
24	KATNI	BAHURIBAND	S-NPP	23.63510	80.15730	10/26/2021	13:17:01	D	4.00
25	MANDLA	NAINPUR	S-NPP	22.46270	80.06210	10/26/2021	13:17:01	D	6.00
26	NARSHIMAPURA	GOTECAON	S-NPP	23.02390	79.36570	10/26/2021	13:17:01	D	8.30
27	NARSHIMAPURA	GOTECAON	S-NPP	23.04360	79.57690	10/26/2021	13:17:01	D	7.20
28	NARSHIMAPURA	NARSIMHAPUR	S-NPP	22.78230	79.34020	10/26/2021	13:17:01	D	3.20
29	RAISEN	BARELI	S-NPP	23.00000	78.14790	10/26/2021	13:17:01	D	2.30

30	RAISEN	BARELI	S-NPP	23.12960	78.03940	10/26/2021	13:17:01	D	6.00
31	SAGAR	DEVRI	S-NPP	23.46800	79.07430	10/26/2021	13:17:01	D	3.60
32	SAGAR	SAGAR	S-NPP	23.65960	78.74720	10/26/2021	13:17:01	D	4.10
33	SATNA	RAGURAJNAGAR	S-NPP	24.71340	80.82950	10/26/2021	13:17:01	D	2.20
34	SEHORE	BUDHNI	S-NPP	22.74190	77.46460	10/26/2021	13:17:01	D	6.50
35	SEHORE	BUDHNI	AQUA	22.72800	77.47800	10/26/2021	13:26:11	D	16.30
36	SEONI	GHANSAUR	S-NPP	22.46760	79.85340	10/26/2021	13:17:01	D	3.80
37	SEONI	GHANSAUR	S-NPP	22.47880	79.82040	10/26/2021	13:17:01	D	2.60
38	SEONI	GHANSAUR	S-NPP	22.60720	79.79680	10/26/2021	13:17:01	D	5.10
39	SEONI	KEWLARI	S-NPP	22.24860	79.83890	10/26/2021	13:17:01	D	5.50
40	SEONI	KEWLARI	S-NPP	22.25190	79.83830	10/26/2021	13:17:01	D	10.40
41	SEONI	KEWLARI	S-NPP	22.25860	79.83710	10/26/2021	13:17:01	D	2.50
42	SEONI	KEWLARI	S-NPP	22.26190	79.83650	10/26/2021	13:17:01	D	2.50
43	SEONI	KEWLARI	S-NPP	22.34770	79.84390	10/26/2021	13:17:01	D	5.90
44	SEONI	KEWLARI	S-NPP	22.38270	79.79150	10/26/2021	13:17:01	D	4.80
45	SEONI	KEWLARI	S-NPP	22.49250	79.99140	10/26/2021	13:17:01	D	1.80
46	SEONI	KEWLARI	S-NPP	22.49270	80.01450	10/26/2021	13:17:01	D	3.30
47	SEONI	KEWLARI	S-NPP	22.52720	80.01960	10/26/2021	13:17:01	D	3.90
48	SEONI	LAKHNADOU	S-NPP	22.40520	79.60910	10/26/2021	13:17:01	D	3.60
49	SEONI	LAKHNADOU	S-NPP	22.58670	79.60290	10/26/2021	13:17:01	D	3.80
50	SEONI	SEONI	S-NPP	22.17130	79.43710	10/26/2021	13:17:01	D	2.80
51	SEONI	SEONI	S-NPP	22.21610	79.80620	10/26/2021	13:17:01	D	5.20
52	SEONI	SEONI	S-NPP	22.21920	79.78240	10/26/2021	13:17:01	D	2.20
53	SEONI	SEONI	S-NPP	22.25680	79.82580	10/26/2021	13:17:01	D	2.60
54	SHEOPUR	SHEOPUR	S-NPP	25.62400	76.73280	10/26/2021	13:17:01	D	2.40
55	VIDESHA	NATERAN	S-NPP	23.91250	77.67580	10/26/2021	13:17:01	D	3.40

SNPP (VIIRS) Satellite image (TCC) of North and Central India Acquired on 26-Oct-2021 at 13:13:00 IST by IARI Ground Station



The study used data received from following Satellites at NRSC Ground Station

S. No.	Satellite Name	Sensor	Resolution (meter)	Day / Night Passes
1.	Suomi NPP	VIIRS	375 / 750	Both
2.	Terra	MODIS	1000	Both
3.	Aqua	MODIS	1000	Both

**The rice mask for the Punjab and Haryana were provided by MNCFC, MoA&FW, Govt of India
The kharif crop mask for Delhi, Uttar Pradesh, Rajasthan and Madhya Pradesh were provided by NRSC**

Study Team

ICAR – HQ	Dr S.K. Chaudhari	DDG (AG. ENGG.)	ddgengg@icar.org.in
	Dr S. Bhasker	ADG (NRM)	adgagroandaf@gmail.com
	Dr K.K. Singh	ADG (AG. ENGG.)	kanchansingh044@gmail.com
ICAR - IARI	Dr V.K. Sehgal	Professor & Nodal Scientist	iaricreams@gmail.com
	Dr Rajkumar Dhakar	Scientist	raidhakar.iari@gmail.com
	Mr Mohd Jahangir	Lab Assistant (KRISHI)	mjahangir198@gmail.com
ICAR - ATARI	Dr Rajbir Singh	Director ATARI (Zone-I) Ludhiana	rajbirsingh.zpd@gmail.com
	Dr S.K. Singh	Director ATARI (Zone-II) Jodhpur	sushilsinghiipr@yahoo.co.in
	Dr Atar Singh	Director ATARI (Zone-III) Kanpur	zpdicarkanpur@gmail.com
ICAR - IASRI	Dr Rajender Parsad	Director	rajender.parsad@icar.gov.in

GIS Maps of fire events can be visualized online on ICAR KRISHI Geoportal website: <http://geoportal.icar.gov.in:8080/geoexplorer/composer/>
(Part of KRISHI Portal: <https://krishi.icar.gov.in> initiative)
