



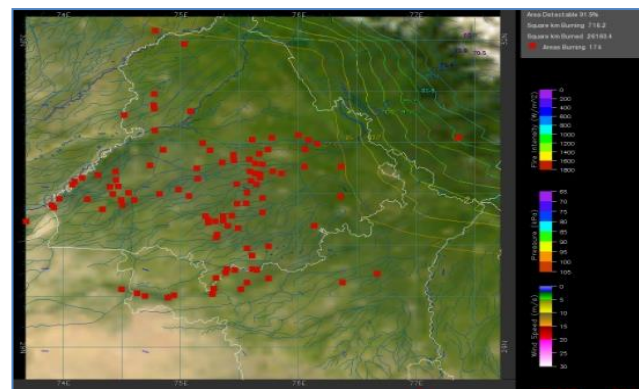
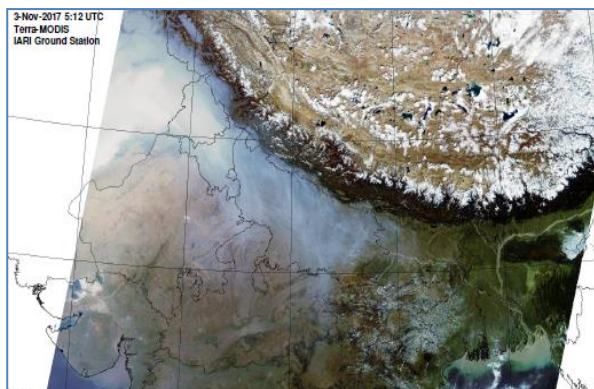
**Bulletin
No. 20**

**Events Date:
20-Oct-2019**

**Issued on:
21-Oct-2019**



MONITORING PADDY RESIDUE BURNING IN NORTH INDIA USING SATELLITE REMOTE SENSING DURING 2019



Prepared by:

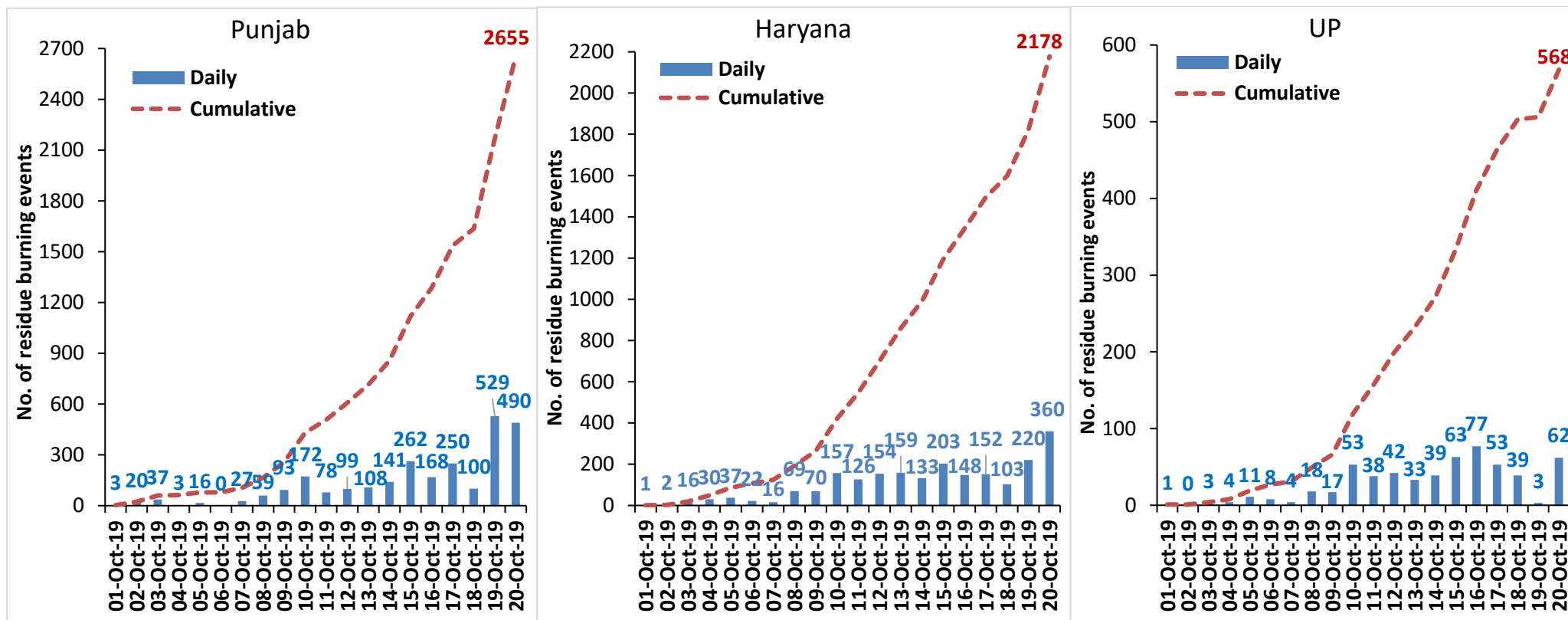
**Consortium for Research on Agroecosystem Monitoring and Modeling from Space (CREAMS) Laboratory,
Division of Agricultural Physics, ICAR – Indian Agricultural Research Institute, New Delhi – 110012**

<http://creams.iari.res.in>

Highlights for 20-October-2019

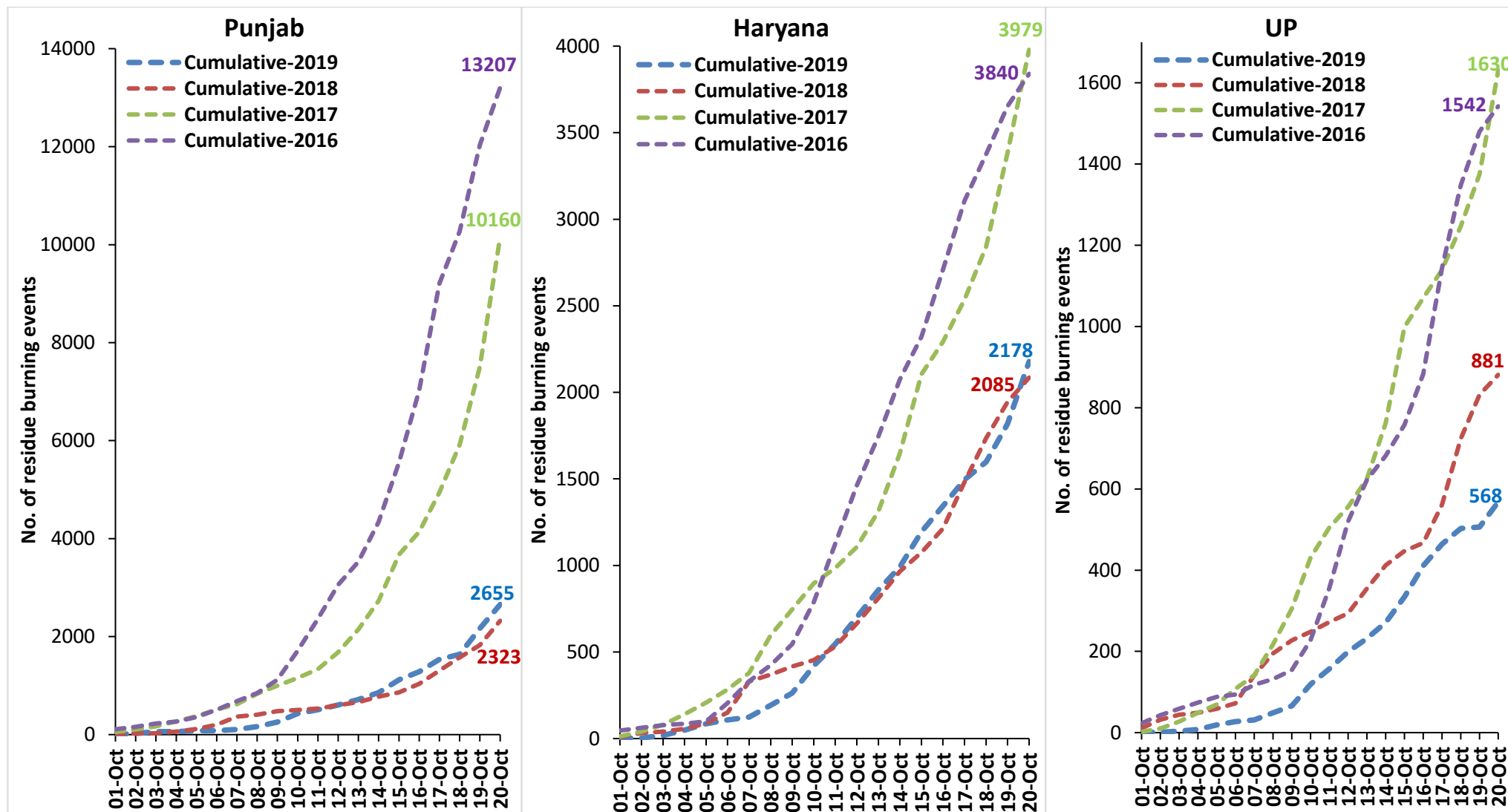
- Satellites detected **912** residue burning events in the three study States on 20-Oct-2019.
- The burning events detected on **20-Oct-2019** are **490**, **360** and **62** in Punjab, Haryana and UP, respectively.
- The number of events has increased from **752** on **19-Oct-2019** to **912** on **20-Oct-2019** in the three states.
- Total **5401** burning events were detected in the three States between **01-Oct-2019** and **20-Oct-2019**, which are distributed as **2655**, **2178** and **568** in Punjab, Haryana and UP, respectively.
- Overall, the total burning events recorded in the three states are **2.1%** more than in 2018 till date. UP recorded **35.5%** reduction while Punjab and Haryana recorded **14.2%** and **4.5%** increase, respectively, in the current season than in 2018.

Temporal distribution of residue burning events for the three study States in 2019

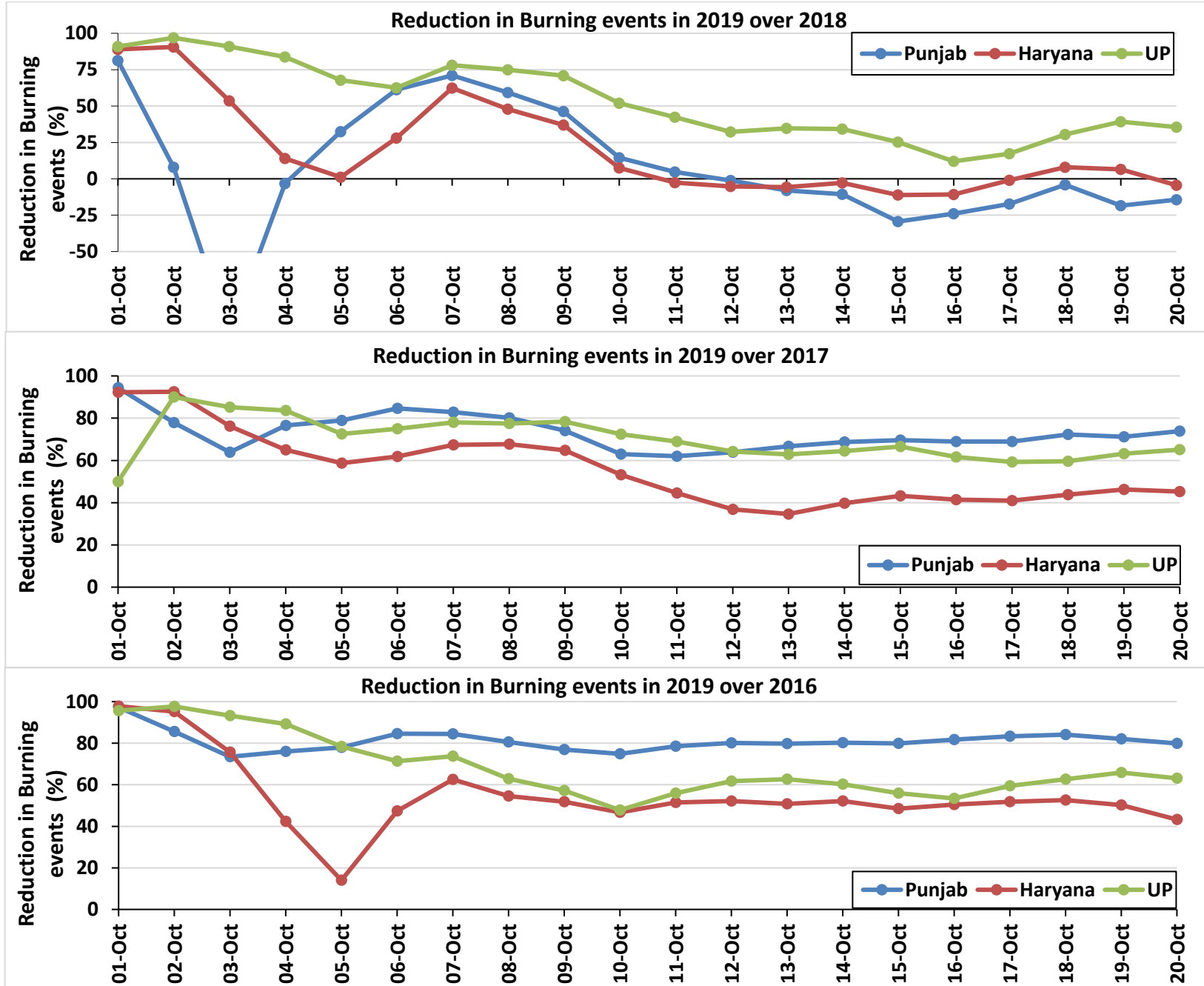


Comparison of residue burning events in current year (2019) with previous years (2018, 2017 & 2016) for the three study States

(01-Oct to 20-Oct)

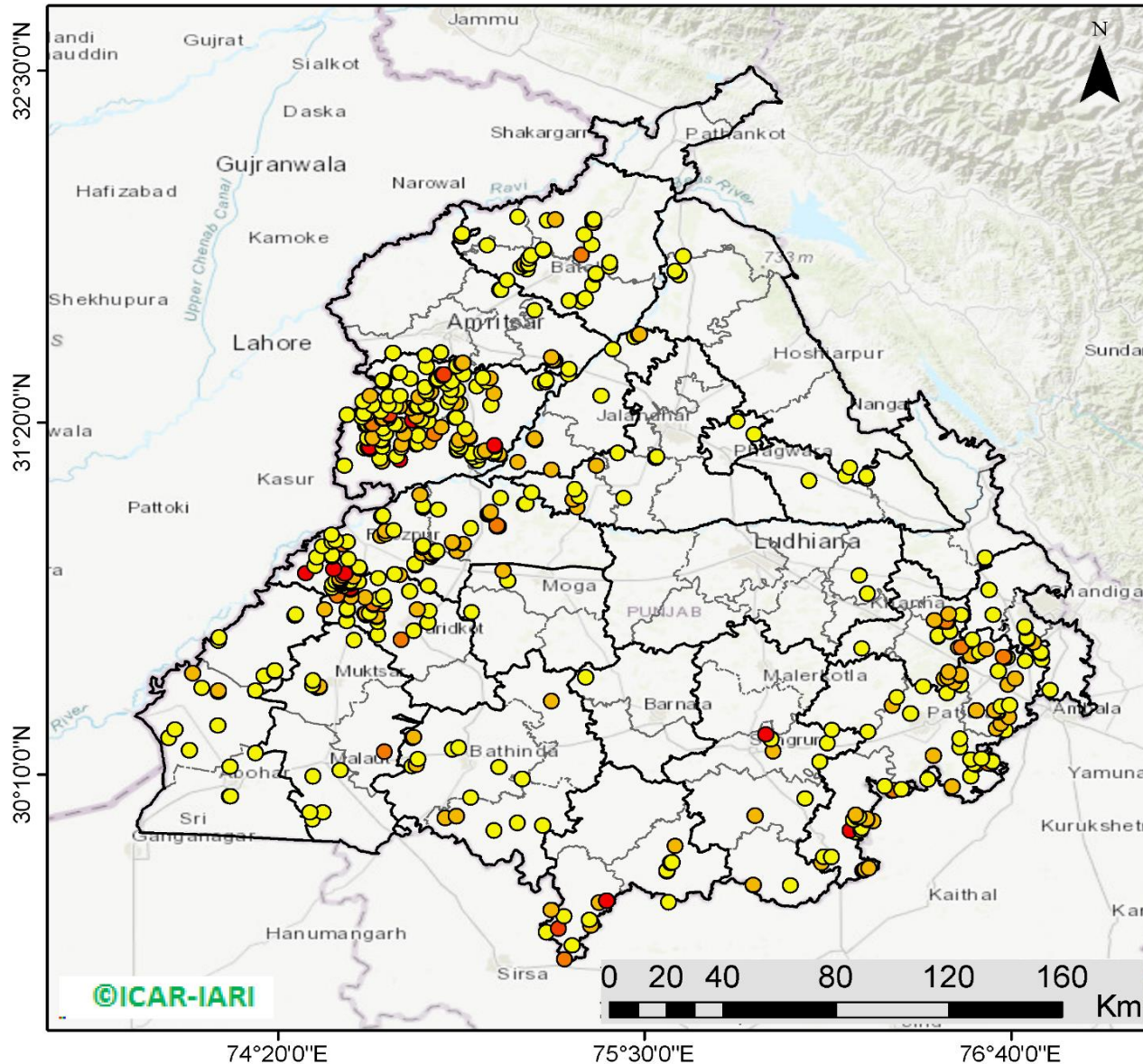


Percent Reduction in Burning events in 2019 over 2018, 2017 and 2016 (Daily Cumulative)



(a) Punjab

RICE RESIDUE BURNING IN PUNJAB



490 burning events detected in Punjab on 20th October 2019

Fire Intensity (W/m²)

- 0 - 5
- 6 - 10
- 11 - 15
- 16 - 20
- >20

©ICAR-IARI



<http://geoportal.icar.gov.in:8080/geoexplorer/composer/>

Details of residue burning events in Punjab on 20-Oct-2019

S. No.	District	Tehsil / Block	Satellite	Longitude	Latitude	Time (IST)	Day / Night	Fire Power (W/m2)
1	AMRITSAR	AJNALA	S-NPP	74.91733	31.94818	13:36:00	D	3.40
2	AMRITSAR	AJNALA	S-NPP	74.91668	31.95153	13:36:00	D	6.30
3	AMRITSAR	AJNALA	S-NPP	74.91956	31.95881	13:36:00	D	2.30
4	AMRITSAR	AMRITSAR I	S-NPP	75.03962	31.77326	13:36:00	D	4.40
5	AMRITSAR	AMRITSAR I	S-NPP	75.04380	31.77385	13:36:00	D	4.40
6	AMRITSAR	AMRITSAR I	S-NPP	75.06375	31.80420	13:36:00	D	1.90
7	AMRITSAR	AMRITSAR II	S-NPP	74.91815	31.52985	13:36:00	D	5.60
8	AMRITSAR	AMRITSAR II	S-NPP	74.92229	31.53044	13:36:00	D	5.20
9	AMRITSAR	AMRITSAR II	S-NPP	74.69998	31.56386	13:36:00	D	2.60
10	AMRITSAR	AMRITSAR II	S-NPP	74.85197	31.56507	13:36:00	D	2.80
11	AMRITSAR	BABA BAKALA	S-NPP	75.25872	31.51076	13:36:00	D	2.70
12	AMRITSAR	BABA BAKALA	S-NPP	75.21048	31.53853	13:36:00	D	8.10
13	AMRITSAR	BABA BAKALA	S-NPP	75.21466	31.53912	13:36:00	D	8.10
14	AMRITSAR	BABA BAKALA	S-NPP	75.20984	31.54189	13:36:00	D	8.10
15	AMRITSAR	BABA BAKALA	S-NPP	75.20486	31.54928	13:36:00	D	6.30
16	AMRITSAR	BABA BAKALA	S-NPP	75.15075	31.70474	13:36:00	D	2.00
17	BARNALA	BARNALA	S-NPP	75.31284	30.48806	13:36:00	D	2.50
18	BATHINDA	BATHINDA	S-NPP	75.03666	30.18956	13:36:00	D	2.00
19	BATHINDA	BATHINDA	S-NPP	74.75990	30.19295	13:36:00	D	3.90
20	BATHINDA	BATHINDA	TERRA	74.77300	30.19700	11:10:00	D	9.00
21	BATHINDA	BATHINDA	S-NPP	74.78016	30.21635	13:36:00	D	3.60
22	BATHINDA	BATHINDA	S-NPP	74.88956	30.24930	13:36:00	D	1.70
23	BATHINDA	BATHINDA	S-NPP	74.90909	30.25554	13:36:00	D	2.40
24	BATHINDA	BATHINDA	S-NPP	74.76208	30.28874	13:36:00	D	6.80
25	BATHINDA	BATHINDA	S-NPP	74.76610	30.28933	13:36:00	D	6.80
26	BATHINDA	RAMPURA PHUL	S-NPP	75.11023	30.15224	13:36:00	D	3.10
27	BATHINDA	RAMPURA PHUL	S-NPP	75.20513	30.40933	13:36:00	D	5.80
28	BATHINDA	TALWANDI SABO	S-NPP	75.02179	29.98140	13:36:00	D	3.60
29	BATHINDA	TALWANDI SABO	S-NPP	75.17638	29.99687	13:36:00	D	3.20
30	BATHINDA	TALWANDI SABO	S-NPP	75.09583	30.00579	13:36:00	D	3.20

31	BATHINDA	TALWANDI SABO	S-NPP	74.86567	30.02272	13:36:00	D	6.30
32	BATHINDA	TALWANDI SABO	S-NPP	74.90179	30.02797	13:36:00	D	10.00
33	BATHINDA	TALWANDI SABO	S-NPP	74.94791	30.08928	13:36:00	D	3.40
34	FARIDKOT	FARIDKOT	S-NPP	74.72587	30.61380	13:36:00	D	14.60
35	FARIDKOT	FARIDKOT	S-NPP	74.65215	30.63039	13:36:00	D	4.10
36	FARIDKOT	FARIDKOT	S-NPP	74.76582	30.64346	13:36:00	D	3.50
37	FARIDKOT	FARIDKOT	S-NPP	74.81054	30.67040	13:36:00	D	2.60
38	FARIDKOT	FARIDKOT	S-NPP	74.65249	30.67135	13:36:00	D	3.40
39	FARIDKOT	FARIDKOT	S-NPP	74.55258	30.67377	13:36:00	D	3.00
40	FARIDKOT	FARIDKOT	S-NPP	74.64927	30.68794	13:36:00	D	9.30
41	FARIDKOT	FARIDKOT	S-NPP	74.64862	30.69125	13:36:00	D	7.30
42	FARIDKOT	FARIDKOT	S-NPP	74.61507	30.69317	13:36:00	D	1.90
43	FARIDKOT	FARIDKOT	S-NPP	74.61443	30.69648	13:36:00	D	1.90
44	FARIDKOT	FARIDKOT	S-NPP	74.60976	30.69921	13:36:00	D	5.20
45	FARIDKOT	FARIDKOT	S-NPP	74.61378	30.69980	13:36:00	D	5.20
46	FARIDKOT	FARIDKOT	S-NPP	74.62589	30.70157	13:36:00	D	3.70
47	FARIDKOT	FARIDKOT	S-NPP	74.81566	30.70872	13:36:00	D	2.00
48	FARIDKOT	FARIDKOT	S-NPP	74.55386	30.71040	13:36:00	D	4.30
49	FARIDKOT	FARIDKOT	TERRA	74.48300	30.71300	11:10:00	D	8.40
50	FARIDKOT	FARIDKOT	S-NPP	74.77729	30.71341	13:36:00	D	5.10
51	FARIDKOT	FARIDKOT	S-NPP	74.55322	30.71371	13:36:00	D	4.30
52	FARIDKOT	FARIDKOT	S-NPP	74.63722	30.72936	13:36:00	D	13.90
53	FARIDKOT	FARIDKOT	S-NPP	74.66611	30.73014	13:36:00	D	14.50
54	FARIDKOT	FARIDKOT	S-NPP	74.63658	30.73268	13:36:00	D	13.90
55	FARIDKOT	FARIDKOT	S-NPP	74.67226	30.74127	13:36:00	D	1.50
56	FARIDKOT	FARIDKOT	S-NPP	74.65418	30.74888	13:36:00	D	2.70
57	FARIDKOT	FARIDKOT	S-NPP	74.61189	30.75295	13:36:00	D	5.70
58	FARIDKOT	FARIDKOT	S-NPP	74.56559	30.75642	13:36:00	D	9.10
59	FARIDKOT	FARIDKOT	S-NPP	74.66905	30.75786	13:36:00	D	4.80
60	FARIDKOT	FARIDKOT	S-NPP	74.52337	30.76045	13:36:00	D	10.90
61	FARIDKOT	FARIDKOT	S-NPP	74.75336	30.77350	13:36:00	D	4.00
62	FARIDKOT	FARIDKOT	S-NPP	74.56509	30.78020	13:36:00	D	20.30
63	FARIDKOT	FARIDKOT	S-NPP	74.56445	30.78352	13:36:00	D	20.30

64	FARIDKOT	FARIDKOT	S-NPP	74.54236	30.79050	13:36:00	D	4.90
65	FARIDKOT	FARIDKOT	S-NPP	74.56590	30.79737	13:36:00	D	4.90
66	FARIDKOT	FARIDKOT	S-NPP	74.58945	30.80423	13:36:00	D	3.50
67	FARIDKOT	FARIDKOT	S-NPP	74.65340	30.81700	13:36:00	D	3.40
68	FATEHGARH SAHIB	ALMOH	S-NPP	76.19140	30.58423	13:36:00	D	2.90
69	FATEHGARH SAHIB	BASSI PATHANAN	S-NPP	76.45872	30.67130	13:36:00	D	4.10
70	FATEHGARH SAHIB	BASSI PATHANAN	S-NPP	76.46313	30.67188	13:36:00	D	4.10
71	FATEHGARH SAHIB	BASSI PATHANAN	TERRA	76.45900	30.67300	11:10:00	D	10.20
72	FATEHGARH SAHIB	BASSI PATHANAN	S-NPP	76.42162	30.67704	13:36:00	D	8.90
73	FATEHGARH SAHIB	BASSI PATHANAN	S-NPP	76.50879	30.69561	13:36:00	D	1.90
74	FATEHGARH SAHIB	BASSI PATHANAN	S-NPP	76.46773	30.69731	13:36:00	D	9.60
75	FATEHGARH SAHIB	FATEHGARH SAHIB	S-NPP	76.48739	30.47035	13:36:00	D	5.40
76	FATEHGARH SAHIB	FATEHGARH SAHIB	S-NPP	76.45358	30.48359	13:36:00	D	5.10
77	FATEHGARH SAHIB	FATEHGARH SAHIB	TERRA	76.46500	30.48800	11:10:00	D	6.10
78	FATEHGARH SAHIB	FATEHGARH SAHIB	TERRA	76.46800	30.50600	11:10:00	D	8.10
79	FATEHGARH SAHIB	FATEHGARH SAHIB	TERRA	76.53800	30.56000	11:10:00	D	7.60
80	FATEHGARH SAHIB	FATEHGARH SAHIB	S-NPP	76.49952	30.58657	13:36:00	D	6.10
81	FATEHGARH SAHIB	FATEHGARH SAHIB	S-NPP	76.50835	30.58773	13:36:00	D	14.30
82	FATEHGARH SAHIB	FATEHGARH SAHIB	S-NPP	76.43432	30.62399	13:36:00	D	3.30
83	FATEHGARH SAHIB	FATEHGARH SAHIB	S-NPP	76.43371	30.62745	13:36:00	D	3.30
84	FATEHGARH SAHIB	FATEHGARH SAHIB	S-NPP	76.47215	30.63968	13:36:00	D	2.80
85	FATEHGARH SAHIB	FATEHGARH SAHIB	S-NPP	76.47301	30.64126	13:36:00	D	3.40
86	FAZILKA	ABOHAR	S-NPP	74.44366	30.01846	13:36:00	D	2.90
87	FAZILKA	ABOHAR	S-NPP	74.17924	30.09367	13:36:00	D	2.50
88	FAZILKA	ABOHAR	S-NPP	74.18321	30.09427	13:36:00	D	2.60
89	FAZILKA	ABOHAR	S-NPP	74.18112	30.19227	13:36:00	D	1.70
90	FAZILKA	ABOHAR	S-NPP	74.26230	30.23780	13:36:00	D	2.20
91	FAZILKA	FAZILKA	S-NPP	74.05152	30.24688	13:36:00	D	1.90
92	FAZILKA	FAZILKA	S-NPP	73.98627	30.28773	13:36:00	D	3.00
93	FAZILKA	FAZILKA	S-NPP	74.00550	30.31445	13:36:00	D	1.30
94	FAZILKA	FAZILKA	S-NPP	74.14214	30.32827	13:36:00	D	1.50
95	FAZILKA	FAZILKA	S-NPP	74.14450	30.44013	13:36:00	D	6.10
96	FAZILKA	FAZILKA	S-NPP	74.14384	30.44344	13:36:00	D	6.10

97	FAZILKA	FAZILKA	S-NPP	74.26284	30.44423	13:36:00	D	2.90
98	FAZILKA	FAZILKA	S-NPP	74.09272	30.45275	13:36:00	D	4.70
99	FAZILKA	FAZILKA	S-NPP	74.06221	30.50256	13:36:00	D	5.20
100	FAZILKA	JALALABAD	S-NPP	74.29028	30.49253	13:36:00	D	4.00
101	FAZILKA	JALALABAD	S-NPP	74.32430	30.50780	13:36:00	D	3.50
102	FAZILKA	JALALABAD	S-NPP	74.32364	30.51110	13:36:00	D	3.50
103	FAZILKA	JALALABAD	S-NPP	74.14452	30.60984	13:36:00	D	3.00
104	FAZILKA	JALALABAD	S-NPP	74.14655	30.62034	13:36:00	D	3.00
105	FAZILKA	JALALABAD	S-NPP	74.38777	30.69284	13:36:00	D	4.90
106	FAZILKA	JALALABAD	S-NPP	74.39113	30.69674	13:36:00	D	4.90
107	FIROZPUR	FIROZPUR	S-NPP	74.50610	30.78518	13:36:00	D	3.10
108	FIROZPUR	FIROZPUR	S-NPP	74.81226	30.79226	13:36:00	D	3.10
109	FIROZPUR	FIROZPUR	S-NPP	74.50819	30.79570	13:36:00	D	2.40
110	FIROZPUR	FIROZPUR	S-NPP	74.53300	30.79595	13:36:00	D	8.80
111	FIROZPUR	FIROZPUR	S-NPP	74.53235	30.79926	13:36:00	D	8.80
112	FIROZPUR	FIROZPUR	S-NPP	74.56525	30.80068	13:36:00	D	5.50
113	FIROZPUR	FIROZPUR	S-NPP	74.52821	30.80142	13:36:00	D	2.10
114	FIROZPUR	FIROZPUR	S-NPP	74.56451	30.80672	13:36:00	D	4.80
115	FIROZPUR	FIROZPUR	S-NPP	74.51887	30.80688	13:36:00	D	1.80
116	FIROZPUR	FIROZPUR	S-NPP	74.53095	30.80864	13:36:00	D	9.40
117	FIROZPUR	FIROZPUR	S-NPP	74.53030	30.81195	13:36:00	D	9.40
118	FIROZPUR	FIROZPUR	S-NPP	74.52966	30.81527	13:36:00	D	10.00
119	FIROZPUR	FIROZPUR	S-NPP	74.57404	30.82173	13:36:00	D	5.30
120	FIROZPUR	FIROZPUR	S-NPP	74.54047	30.82366	13:36:00	D	11.60
121	FIROZPUR	FIROZPUR	S-NPP	74.72219	30.82702	13:36:00	D	6.20
122	FIROZPUR	FIROZPUR	S-NPP	74.70533	30.83053	13:36:00	D	2.50
123	FIROZPUR	FIROZPUR	S-NPP	74.54723	30.83146	13:36:00	D	34.90
124	FIROZPUR	FIROZPUR	S-NPP	74.42248	30.83362	13:36:00	D	23.90
125	FIROZPUR	FIROZPUR	S-NPP	74.51108	30.84662	13:36:00	D	34.50
126	FIROZPUR	FIROZPUR	S-NPP	74.59373	30.84847	13:36:00	D	5.50
127	FIROZPUR	FIROZPUR	S-NPP	74.59308	30.85178	13:36:00	D	5.00
128	FIROZPUR	FIROZPUR	S-NPP	74.45078	30.85822	13:36:00	D	3.80
129	FIROZPUR	FIROZPUR	S-NPP	74.77041	30.86040	13:36:00	D	5.00

130	FIROZPUR	FIROZPUR	S-NPP	74.76977	30.86372	13:36:00	D	4.20
131	FIROZPUR	FIROZPUR	S-NPP	74.55833	30.88081	13:36:00	D	1.70
132	FIROZPUR	FIROZPUR	S-NPP	74.45765	30.88648	13:36:00	D	4.90
133	FIROZPUR	FIROZPUR	S-NPP	74.81937	30.88795	13:36:00	D	2.60
134	FIROZPUR	FIROZPUR	S-NPP	74.50668	30.89028	13:36:00	D	2.10
135	FIROZPUR	FIROZPUR	S-NPP	74.50603	30.89359	13:36:00	D	4.80
136	FIROZPUR	FIROZPUR	S-NPP	74.82623	30.89578	13:36:00	D	3.30
137	FIROZPUR	FIROZPUR	S-NPP	74.82559	30.89910	13:36:00	D	8.70
138	FIROZPUR	FIROZPUR	TERRA	74.79300	30.90000	11:10:00	D	9.40
139	FIROZPUR	FIROZPUR	S-NPP	74.82088	30.90184	13:36:00	D	8.70
140	FIROZPUR	FIROZPUR	S-NPP	74.83652	30.90751	13:36:00	D	4.60
141	FIROZPUR	FIROZPUR	S-NPP	74.79263	30.91829	13:36:00	D	2.10
142	FIROZPUR	FIROZPUR	S-NPP	74.79199	30.92161	13:36:00	D	2.40
143	FIROZPUR	FIROZPUR	S-NPP	74.47571	30.92218	13:36:00	D	2.90
144	FIROZPUR	FIROZPUR	S-NPP	74.79542	30.92552	13:36:00	D	2.40
145	FIROZPUR	FIROZPUR	S-NPP	74.54094	30.92829	13:36:00	D	11.20
146	FIROZPUR	FIROZPUR	S-NPP	74.50604	30.93683	13:36:00	D	1.90
147	FIROZPUR	FIROZPUR	S-NPP	74.55580	30.93727	13:36:00	D	3.40
148	FIROZPUR	FIROZPUR	S-NPP	74.51750	30.94192	13:36:00	D	1.90
149	FIROZPUR	FIROZPUR	S-NPP	74.66042	30.95587	13:36:00	D	5.20
150	FIROZPUR	FIROZPUR	S-NPP	74.50552	30.96062	13:36:00	D	1.70
151	FIROZPUR	FIROZPUR	TERRA	74.67500	30.96300	11:10:00	D	6.60
152	FIROZPUR	FIROZPUR	TERRA	74.67600	30.97300	11:10:00	D	7.10
153	FIROZPUR	FIROZPUR	S-NPP	74.70245	30.97561	13:36:00	D	2.80
154	FIROZPUR	FIROZPUR	S-NPP	74.66436	31.02131	13:36:00	D	2.40
155	FIROZPUR	FIROZPUR	S-NPP	74.66777	31.02522	13:36:00	D	3.60
156	FIROZPUR	FIROZPUR	S-NPP	74.79663	31.05074	13:36:00	D	2.70
157	FIROZPUR	FIROZPUR	S-NPP	74.79605	31.05633	13:36:00	D	1.40
158	FIROZPUR	FIROZPUR	S-NPP	74.78490	31.09235	13:36:00	D	8.60
159	FIROZPUR	ZIRA	S-NPP	74.90364	30.90689	13:36:00	D	7.30
160	FIROZPUR	ZIRA	S-NPP	74.84059	30.90810	13:36:00	D	4.60
161	FIROZPUR	ZIRA	S-NPP	74.92430	30.93039	13:36:00	D	5.50
162	FIROZPUR	ZIRA	S-NPP	74.89037	30.93237	13:36:00	D	3.90

163	FIROZPUR	ZIRA	S-NPP	74.88973	30.93570	13:36:00	D	8.80
164	FIROZPUR	ZIRA	S-NPP	74.94806	30.98345	13:36:00	D	2.10
165	FIROZPUR	ZIRA	S-NPP	75.03132	30.98838	13:36:00	D	10.50
166	FIROZPUR	ZIRA	S-NPP	75.03542	30.98896	13:36:00	D	10.50
167	FIROZPUR	ZIRA	S-NPP	75.03068	30.99172	13:36:00	D	10.50
168	FIROZPUR	ZIRA	S-NPP	75.00251	31.02889	13:36:00	D	10.50
169	FIROZPUR	ZIRA	S-NPP	75.00597	31.03281	13:36:00	D	7.10
170	FIROZPUR	ZIRA	S-NPP	75.00944	31.03674	13:36:00	D	7.10
171	FIROZPUR	ZIRA	S-NPP	74.84406	31.04390	13:36:00	D	2.40
172	FIROZPUR	ZIRA	S-NPP	75.11864	31.06254	13:36:00	D	2.50
173	FIROZPUR	ZIRA	S-NPP	75.12277	31.06312	13:36:00	D	2.50
174	FIROZPUR	ZIRA	S-NPP	75.04289	31.08268	13:36:00	D	3.40
175	FIROZPUR	ZIRA	S-NPP	75.14120	31.10011	13:36:00	D	4.70
176	GURDASPUR	BATALA	S-NPP	75.29604	31.73533	13:36:00	D	3.70
177	GURDASPUR	BATALA	S-NPP	75.26102	31.73739	13:36:00	D	4.50
178	GURDASPUR	BATALA	S-NPP	75.31168	31.74442	13:36:00	D	3.70
179	GURDASPUR	BATALA	S-NPP	75.33436	31.78985	13:36:00	D	2.60
180	GURDASPUR	BATALA	S-NPP	75.34560	31.82259	13:36:00	D	3.80
181	GURDASPUR	BATALA	S-NPP	75.34497	31.82597	13:36:00	D	3.80
182	GURDASPUR	BATALA	S-NPP	75.12568	31.84047	13:36:00	D	1.40
183	GURDASPUR	BATALA	S-NPP	75.10697	31.84820	13:36:00	D	1.40
184	GURDASPUR	BATALA	S-NPP	75.11829	31.85670	13:36:00	D	3.30
185	GURDASPUR	BATALA	S-NPP	75.11866	31.85759	13:36:00	D	5.20
186	GURDASPUR	BATALA	S-NPP	75.13088	31.85847	13:36:00	D	1.30
187	GURDASPUR	BATALA	S-NPP	75.13127	31.85933	13:36:00	D	1.80
188	GURDASPUR	BATALA	S-NPP	75.13227	31.87673	13:36:00	D	1.50
189	GURDASPUR	BATALA	S-NPP	75.13876	31.88799	13:36:00	D	1.60
190	GURDASPUR	BATALA	S-NPP	75.17895	31.90392	13:36:00	D	1.60
191	GURDASPUR	BATALA	S-NPP	75.17831	31.90728	13:36:00	D	2.50
192	GURDASPUR	BATALA	S-NPP	74.99912	31.92021	13:36:00	D	4.30
193	GURDASPUR	DERA BABA NANAK	S-NPP	75.09819	32.01477	13:36:00	D	4.30
194	GURDASPUR	GURDASPUR	S-NPP	75.38854	31.84930	13:36:00	D	2.40
195	GURDASPUR	GURDASPUR	S-NPP	75.39026	31.86342	13:36:00	D	2.60

196	GURDASPUR	GURDASPUR	S-NPP	75.29887	31.88928	13:36:00	D	13.60
197	GURDASPUR	GURDASPUR	S-NPP	75.33200	31.92154	13:36:00	D	2.20
198	GURDASPUR	GURDASPUR	S-NPP	75.30800	31.95638	13:36:00	D	3.60
199	GURDASPUR	GURDASPUR	S-NPP	75.33992	31.99549	13:36:00	D	2.20
200	GURDASPUR	GURDASPUR	S-NPP	75.33646	31.99566	13:36:00	D	6.90
201	GURDASPUR	GURDASPUR	S-NPP	75.19128	32.00348	13:36:00	D	2.10
202	GURDASPUR	GURDASPUR	S-NPP	75.33455	32.00580	13:36:00	D	2.30
203	GURDASPUR	GURDASPUR	S-NPP	75.33881	32.00638	13:36:00	D	2.30
204	GURDASPUR	GURDASPUR	S-NPP	75.21667	32.00698	13:36:00	D	8.20
205	HOSHIARPUR	DASUYA	S-NPP	75.60914	31.82013	13:36:00	D	2.30
206	HOSHIARPUR	DASUYA	S-NPP	75.59800	31.83258	13:36:00	D	3.30
207	HOSHIARPUR	DASUYA	S-NPP	75.59737	31.83599	13:36:00	D	1.70
208	HOSHIARPUR	GARHSHANKAR	S-NPP	76.13982	31.15722	13:36:00	D	3.70
209	HOSHIARPUR	GARHSHANKAR	S-NPP	76.15303	31.18364	13:36:00	D	2.60
210	HOSHIARPUR	MUKERIAN	S-NPP	75.62365	31.88491	13:36:00	D	1.50
211	JALANDHAR	JALANDHAR I	S-NPP	75.53595	31.21517	13:36:00	D	1.90
212	JALANDHAR	JALANDHAR I	S-NPP	75.53532	31.21855	13:36:00	D	1.90
213	JALANDHAR	JALANDHAR I	S-NPP	75.53954	31.21914	13:36:00	D	1.90
214	JALANDHAR	NAKODAR	S-NPP	75.43471	31.08269	13:36:00	D	4.20
215	JALANDHAR	NAKODAR	S-NPP	75.41599	31.23319	13:36:00	D	3.90
216	JALANDHAR	SHAHKOT	S-NPP	75.28644	31.05171	13:36:00	D	9.90
217	JALANDHAR	SHAHKOT	S-NPP	75.27307	31.07741	13:36:00	D	6.60
218	JALANDHAR	SHAHKOT	S-NPP	75.29259	31.08704	13:36:00	D	2.10
219	JALANDHAR	SHAHKOT	S-NPP	75.27924	31.11275	13:36:00	D	3.00
220	JALANDHAR	SHAHKOT	S-NPP	75.20403	31.17590	13:36:00	D	5.50
221	JALANDHAR	SHAHKOT	S-NPP	75.34690	31.18899	13:36:00	D	5.30
222	KAPURTHALA	BHOLATH	S-NPP	75.39853	31.57590	13:36:00	D	3.60
223	KAPURTHALA	BHOLATH	S-NPP	75.46918	31.61678	13:36:00	D	3.70
224	KAPURTHALA	BHOLATH	S-NPP	75.48067	31.62529	13:36:00	D	5.10
225	KAPURTHALA	BHOLATH	S-NPP	75.48492	31.62587	13:36:00	D	5.10
226	KAPURTHALA	KAPURTHALA	S-NPP	75.36134	31.42078	13:36:00	D	3.00
227	KAPURTHALA	PHAGWARA	S-NPP	75.84954	31.29295	13:36:00	D	2.20
228	KAPURTHALA	PHAGWARA	S-NPP	75.79438	31.33719	13:36:00	D	4.10

229	KAPURTHALA	SULTANPUR LODHI	S-NPP	75.09702	31.20207	13:36:00	D	6.40
230	KAPURTHALA	SULTANPUR LODHI	S-NPP	75.15202	31.27640	13:36:00	D	5.20
231	KAPURTHALA	SULTANPUR LODHI	S-NPP	75.14725	31.27917	13:36:00	D	5.20
232	KAPURTHALA	SULTANPUR LODHI	S-NPP	75.15139	31.27975	13:36:00	D	5.20
233	LUDHIANA	SAMRALA	S-NPP	76.20936	30.76698	13:36:00	D	2.90
234	LUDHIANA	SAMRALA	S-NPP	76.18281	30.82566	13:36:00	D	3.30
235	MANSA	BUDHLADA	S-NPP	75.57671	29.74368	13:36:00	D	1.90
236	MANSA	BUDHLADA	S-NPP	75.57175	29.84393	13:36:00	D	2.30
237	MANSA	BUDHLADA	S-NPP	75.57112	29.84729	13:36:00	D	2.30
238	MANSA	BUDHLADA	S-NPP	75.58348	29.87457	13:36:00	D	9.10
239	MANSA	BUDHLADA	TERRA	75.58800	29.87500	11:10:00	D	3.70
240	MANSA	BUDHLADA	TERRA	75.59800	29.92900	11:10:00	D	8.00
241	MANSA	SARDULGARH	S-NPP	75.24535	29.55380	13:36:00	D	13.20
242	MANSA	SARDULGARH	S-NPP	75.27007	29.59842	13:36:00	D	3.10
243	MANSA	SARDULGARH	S-NPP	75.18755	29.64356	13:36:00	D	2.70
244	MANSA	SARDULGARH	S-NPP	75.22653	29.65600	13:36:00	D	17.60
245	MANSA	SARDULGARH	S-NPP	75.32865	29.66377	13:36:00	D	7.30
246	MANSA	SARDULGARH	S-NPP	75.32492	29.68380	13:36:00	D	4.70
247	MANSA	SARDULGARH	S-NPP	75.24385	29.69614	13:36:00	D	2.00
248	MANSA	SARDULGARH	S-NPP	75.20359	29.71614	13:36:00	D	6.30
249	MANSA	SARDULGARH	S-NPP	75.35655	29.74133	13:36:00	D	5.40
250	MANSA	SARDULGARH	S-NPP	75.38027	29.74811	13:36:00	D	35.00
251	MOGA	BAGHA PURANA	S-NPP	74.95008	30.70416	13:36:00	D	3.20
252	MOGA	MOGA	S-NPP	75.06474	30.80785	13:36:00	D	3.60
253	MOGA	MOGA	S-NPP	75.05022	30.84008	13:36:00	D	6.40
254	MUKTSAR	GIDDARBAHA	S-NPP	74.67220	30.24148	13:36:00	D	12.20
255	MUKTSAR	MALAUT	S-NPP	74.47642	30.03952	13:36:00	D	1.60
256	MUKTSAR	MALAUT	S-NPP	74.43532	30.04022	13:36:00	D	3.00
257	MUKTSAR	MALAUT	S-NPP	74.44558	30.16039	13:36:00	D	2.30
258	MUKTSAR	MALAUT	S-NPP	74.53196	30.17998	13:36:00	D	4.00
259	MUKTSAR	MUKTSAR	S-NPP	74.45834	30.45365	13:36:00	D	3.70
260	MUKTSAR	MUKTSAR	S-NPP	74.46235	30.45424	13:36:00	D	3.70
261	MUKTSAR	MUKTSAR	S-NPP	74.46635	30.45483	13:36:00	D	7.50

262	MUKTSAR	MUKTSAR	S-NPP	74.46570	30.45814	13:36:00	D	7.50
263	MUKTSAR	MUKTSAR	S-NPP	74.44439	30.46179	13:36:00	D	4.50
264	MUKTSAR	MUKTSAR	S-NPP	74.44534	30.47808	13:36:00	D	4.00
265	MUKTSAR	MUKTSAR	S-NPP	74.57692	30.61260	13:36:00	D	3.10
266	NAWASHAHR	BALACHAUR	S-NPP	76.20869	31.14865	13:36:00	D	8.20
267	NAWASHAHR	BALACHAUR	S-NPP	76.20746	31.15555	13:36:00	D	3.40
268	NAWASHAHR	NAWASHAHR	TERRA	76.02400	31.14000	11:10:00	D	4.50
269	PATIALA	NABHA	S-NPP	76.21166	30.30813	13:36:00	D	2.50
270	PATIALA	PATIALA	S-NPP	76.28866	30.11335	13:36:00	D	5.00
271	PATIALA	PATIALA	S-NPP	76.29295	30.11393	13:36:00	D	11.10
272	PATIALA	PATIALA	S-NPP	76.31876	30.11739	13:36:00	D	3.60
273	PATIALA	PATIALA	TERRA	76.47800	30.12700	11:10:00	D	6.10
274	PATIALA	PATIALA	S-NPP	76.40153	30.14958	13:36:00	D	3.10
275	PATIALA	PATIALA	S-NPP	76.53774	30.16066	13:36:00	D	2.10
276	PATIALA	PATIALA	S-NPP	76.55362	30.19818	13:36:00	D	9.00
277	PATIALA	PATIALA	TERRA	76.60300	30.20100	11:10:00	D	4.10
278	PATIALA	PATIALA	S-NPP	76.54863	30.20106	13:36:00	D	3.10
279	PATIALA	PATIALA	TERRA	76.59300	30.20200	11:10:00	D	11.30
280	PATIALA	PATIALA	S-NPP	76.60574	30.20869	13:36:00	D	2.30
281	PATIALA	PATIALA	S-NPP	76.53823	30.21556	13:36:00	D	3.20
282	PATIALA	PATIALA	S-NPP	76.57256	30.21844	13:36:00	D	2.10
283	PATIALA	PATIALA	S-NPP	76.41982	30.22827	13:36:00	D	5.10
284	PATIALA	PATIALA	S-NPP	76.50408	30.25709	13:36:00	D	3.00
285	PATIALA	PATIALA	S-NPP	76.50363	30.28534	13:36:00	D	3.40
286	PATIALA	PATIALA	S-NPP	76.34690	30.36845	13:36:00	D	1.90
287	PATIALA	PATIALA	S-NPP	76.28881	30.39583	13:36:00	D	6.70
288	PATIALA	PATIALA	S-NPP	76.30377	30.42135	13:36:00	D	1.90
289	PATIALA	PATIALA	S-NPP	76.46208	30.43517	13:36:00	D	3.20
290	PATIALA	PATIALA	S-NPP	76.38658	30.45701	13:36:00	D	4.10
291	PATIALA	RAJPURA	S-NPP	76.64782	30.31159	13:36:00	D	2.30
292	PATIALA	RAJPURA	S-NPP	76.61945	30.31849	13:36:00	D	5.40
293	PATIALA	RAJPURA	TERRA	76.63500	30.33400	11:10:00	D	7.70
294	PATIALA	RAJPURA	S-NPP	76.65901	30.35653	13:36:00	D	6.80

295	PATIALA	RAJPURA	S-NPP	76.62431	30.37335	13:36:00	D	4.20
296	PATIALA	RAJPURA	S-NPP	76.62370	30.37683	13:36:00	D	4.50
297	PATIALA	RAJPURA	S-NPP	76.55557	30.37852	13:36:00	D	7.90
298	PATIALA	RAJPURA	S-NPP	76.61424	30.37914	13:36:00	D	5.20
299	PATIALA	RAJPURA	S-NPP	76.63460	30.39248	13:36:00	D	2.80
300	PATIALA	RAJPURA	S-NPP	76.66125	30.39598	13:36:00	D	2.90
301	PATIALA	RAJPURA	S-NPP	76.50682	30.46228	13:36:00	D	4.20
302	PATIALA	RAJPURA	S-NPP	76.65604	30.46399	13:36:00	D	6.40
303	PATIALA	RAJPURA	S-NPP	76.67977	30.48489	13:36:00	D	5.30
304	PATIALA	RAJPURA	S-NPP	76.50578	30.49405	13:36:00	D	2.90
305	PATIALA	RAJPURA	S-NPP	76.50517	30.49751	13:36:00	D	7.60
306	PATIALA	RAJPURA	S-NPP	76.62532	30.50983	13:36:00	D	2.10
307	PATIALA	RAJPURA	S-NPP	76.71100	30.54251	13:36:00	D	3.00
308	PATIALA	RAJPURA	S-NPP	76.65433	30.55286	13:36:00	D	3.10
309	PATIALA	RAJPURA	S-NPP	76.65519	30.55351	13:36:00	D	3.80
310	PATIALA	RAJPURA	S-NPP	76.64481	30.55516	13:36:00	D	14.50
311	PATIALA	RAJPURA	S-NPP	76.64120	30.55527	13:36:00	D	14.20
312	PATIALA	RAJPURA	TERRA	76.54800	30.55900	11:10:00	D	4.80
313	PATIALA	RAJPURA	S-NPP	76.76190	30.56710	13:36:00	D	4.70
314	PATIALA	RAJPURA	S-NPP	76.75783	30.57025	13:36:00	D	4.70
315	PATIALA	RAJPURA	S-NPP	76.56574	30.57040	13:36:00	D	3.90
316	PATIALA	RAJPURA	S-NPP	76.76130	30.57060	13:36:00	D	4.70
317	PATIALA	RAJPURA	S-NPP	76.58674	30.58025	13:36:00	D	5.70
318	PATIALA	RAJPURA	S-NPP	76.54456	30.61382	13:36:00	D	3.30
319	PATIALA	SAMANA	S-NPP	76.19455	29.84658	13:36:00	D	5.00
320	PATIALA	SAMANA	S-NPP	76.19753	29.84767	13:36:00	D	5.50
321	PATIALA	SAMANA	S-NPP	76.20243	29.85114	13:36:00	D	7.40
322	PATIALA	SAMANA	S-NPP	76.21456	29.85626	13:36:00	D	8.20
323	PATIALA	SAMANA	S-NPP	76.06412	29.87427	13:36:00	D	9.40
324	PATIALA	SAMANA	S-NPP	76.06948	29.89243	13:36:00	D	3.00
325	PATIALA	SAMANA	S-NPP	76.09539	29.89248	13:36:00	D	1.70
326	PATIALA	SAMANA	S-NPP	76.17297	29.97269	13:36:00	D	3.40
327	PATIALA	SAMANA	S-NPP	76.15414	29.98063	13:36:00	D	37.00

328	PATIALA	SAMANA	S-NPP	76.18877	29.98181	13:36:00	D	3.20
329	PATIALA	SAMANA	S-NPP	76.19180	29.98922	13:36:00	D	2.80
330	PATIALA	SAMANA	S-NPP	76.22712	30.01149	13:36:00	D	5.50
331	PATIALA	SAMANA	S-NPP	76.20885	30.01602	13:36:00	D	3.80
332	PATIALA	SAMANA	S-NPP	76.16506	30.01707	13:36:00	D	4.90
333	PATIALA	SAMANA	S-NPP	76.20399	30.01886	13:36:00	D	8.20
334	PATIALA	SAMANA	S-NPP	76.20824	30.01944	13:36:00	D	8.20
335	PATIALA	SAMANA	S-NPP	76.17661	30.02563	13:36:00	D	3.20
336	PATIALA	SAMANA	S-NPP	76.18086	30.02621	13:36:00	D	3.20
337	PATIALA	SAMANA	TERRA	76.17300	30.03200	11:10:00	D	5.30
338	PATIALA	SAMANA	S-NPP	76.26416	30.12761	13:36:00	D	2.90
339	RUPNAGAR	RUPNAGAR	S-NPP	76.58350	30.88506	13:36:00	D	2.90
340	SANGRUR	MOONAK	S-NPP	75.96501	29.79812	13:36:00	D	4.60
341	SANGRUR	MOONAK	S-NPP	75.84543	29.79879	13:36:00	D	3.80
342	SANGRUR	MOONAK	S-NPP	75.84633	29.79931	13:36:00	D	5.80
343	SANGRUR	SANGRUR	S-NPP	76.05847	30.20780	13:36:00	D	3.70
344	SANGRUR	SANGRUR	S-NPP	75.90969	30.24298	13:36:00	D	5.20
345	SANGRUR	SANGRUR	S-NPP	76.08270	30.26983	13:36:00	D	4.40
346	SANGRUR	SANGRUR	S-NPP	75.90231	30.28371	13:36:00	D	4.20
347	SANGRUR	SANGRUR	S-NPP	75.88660	30.29895	13:36:00	D	22.60
348	SANGRUR	SANGRUR	S-NPP	76.09667	30.31367	13:36:00	D	3.60
349	SANGRUR	SUNAM	S-NPP	75.85261	30.02984	13:36:00	D	7.10
350	SANGRUR	SUNAM	S-NPP	76.01015	30.08615	13:36:00	D	4.40
351	SAS NAGAR	DERABASSI	S-NPP	76.79001	30.44501	13:36:00	D	3.80
352	SAS NAGAR	DERABASSI	S-NPP	76.76552	30.54610	13:36:00	D	2.10
353	SAS NAGAR	KHARAR	S-NPP	76.60913	30.69451	13:36:00	D	2.10
354	SAS NAGAR	KHARAR	S-NPP	76.59537	30.77876	13:36:00	D	1.80
355	SAS NAGAR	MOHALI	TERRA	76.73700	30.60500	11:10:00	D	6.40
356	SAS NAGAR	MOHALI	S-NPP	76.71783	30.61515	13:36:00	D	7.40
357	SAS NAGAR	MOHALI	S-NPP	76.71722	30.61865	13:36:00	D	3.60
358	SAS NAGAR	MOHALI	S-NPP	76.71117	30.65361	13:36:00	D	1.70
359	SAS NAGAR	MOHALI	S-NPP	76.71056	30.65710	13:36:00	D	1.70
360	TARN TARAN	KHADOOR SAHIB	S-NPP	74.96609	31.20550	13:36:00	D	3.50

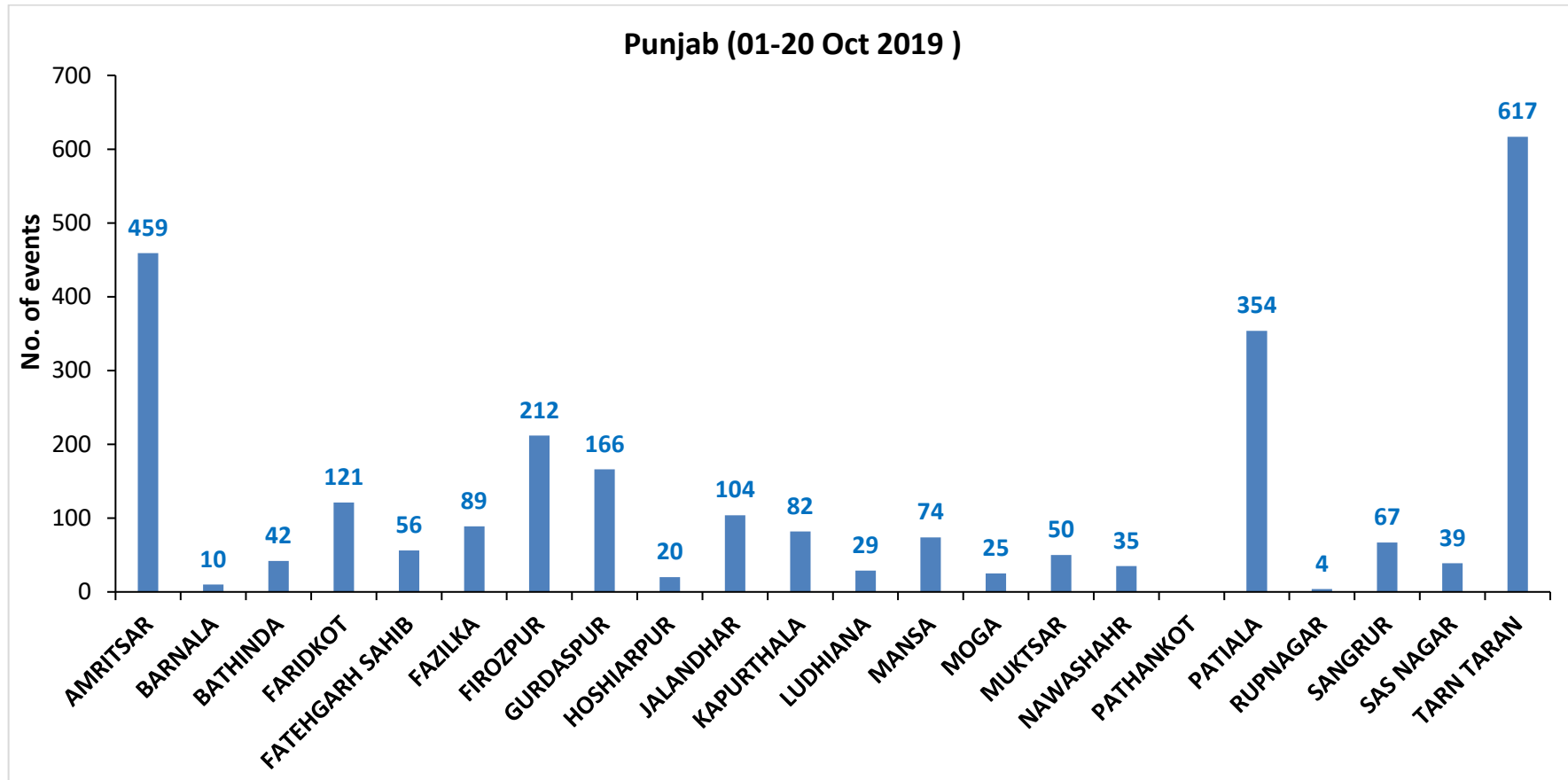
361	TARN TARAN	KHADOOR SAHIB	S-NPP	74.97021	31.20608	13:36:00	D	3.50
362	TARN TARAN	KHADOOR SAHIB	S-NPP	74.95531	31.21769	13:36:00	D	3.20
363	TARN TARAN	KHADOOR SAHIB	S-NPP	74.97524	31.22394	13:36:00	D	2.20
364	TARN TARAN	KHADOOR SAHIB	S-NPP	75.03835	31.22600	13:36:00	D	8.30
365	TARN TARAN	KHADOOR SAHIB	S-NPP	75.02056	31.23035	13:36:00	D	3.50
366	TARN TARAN	KHADOOR SAHIB	S-NPP	74.94863	31.23046	13:36:00	D	3.20
367	TARN TARAN	KHADOOR SAHIB	S-NPP	75.01580	31.23312	13:36:00	D	3.70
368	TARN TARAN	KHADOOR SAHIB	S-NPP	74.98156	31.23513	13:36:00	D	4.30
369	TARN TARAN	KHADOOR SAHIB	S-NPP	75.02341	31.23763	13:36:00	D	2.30
370	TARN TARAN	KHADOOR SAHIB	S-NPP	74.99329	31.24023	13:36:00	D	7.90
371	TARN TARAN	KHADOOR SAHIB	S-NPP	74.91474	31.25307	13:36:00	D	3.20
372	TARN TARAN	KHADOOR SAHIB	S-NPP	75.02435	31.25493	13:36:00	D	2.70
373	TARN TARAN	KHADOOR SAHIB	S-NPP	75.02371	31.25827	13:36:00	D	25.60
374	TARN TARAN	KHADOOR SAHIB	S-NPP	74.90460	31.26190	13:36:00	D	4.60
375	TARN TARAN	KHADOOR SAHIB	S-NPP	74.91025	31.27643	13:36:00	D	5.90
376	TARN TARAN	KHADOOR SAHIB	S-NPP	74.94250	31.28447	13:36:00	D	3.20
377	TARN TARAN	KHADOOR SAHIB	S-NPP	74.94186	31.28781	13:36:00	D	6.40
378	TARN TARAN	KHADOOR SAHIB	S-NPP	74.92937	31.31199	13:36:00	D	3.30
379	TARN TARAN	KHADOOR SAHIB	S-NPP	74.81073	31.33622	13:36:00	D	4.80
380	TARN TARAN	KHADOOR SAHIB	S-NPP	74.82006	31.37523	13:36:00	D	7.40
381	TARN TARAN	KHADOOR SAHIB	S-NPP	74.81941	31.37856	13:36:00	D	2.70
382	TARN TARAN	KHADOOR SAHIB	S-NPP	74.75597	31.38146	13:36:00	D	8.40
383	TARN TARAN	KHADOOR SAHIB	S-NPP	74.78056	31.38497	13:36:00	D	5.00
384	TARN TARAN	KHADOOR SAHIB	S-NPP	74.77581	31.38771	13:36:00	D	20.60
385	TARN TARAN	KHADOOR SAHIB	S-NPP	74.77991	31.38830	13:36:00	D	5.00
386	TARN TARAN	KHADOOR SAHIB	S-NPP	74.80518	31.38847	13:36:00	D	2.60
387	TARN TARAN	KHADOOR SAHIB	S-NPP	74.80454	31.39181	13:36:00	D	2.60
388	TARN TARAN	KHADOOR SAHIB	S-NPP	75.01147	31.39229	13:36:00	D	3.80
389	TARN TARAN	KHADOOR SAHIB	S-NPP	74.91335	31.39547	13:36:00	D	3.70
390	TARN TARAN	KHADOOR SAHIB	S-NPP	74.90043	31.39854	13:36:00	D	9.10
391	TARN TARAN	KHADOOR SAHIB	S-NPP	74.87444	31.40173	13:36:00	D	3.30
392	TARN TARAN	KHADOOR SAHIB	S-NPP	74.78295	31.41612	13:36:00	D	5.10
393	TARN TARAN	KHADOOR SAHIB	S-NPP	74.88422	31.41682	13:36:00	D	2.70

394	TARN TARAN	KHADOOR SAHIB	S-NPP	74.81452	31.42748	13:36:00	D	3.00
395	TARN TARAN	KHADOOR SAHIB	S-NPP	75.02179	31.42937	13:36:00	D	8.70
396	TARN TARAN	KHADOOR SAHIB	S-NPP	74.82145	31.43532	13:36:00	D	5.50
397	TARN TARAN	KHADOOR SAHIB	S-NPP	74.80437	31.43631	13:36:00	D	2.90
398	TARN TARAN	KHADOOR SAHIB	S-NPP	74.90508	31.44036	13:36:00	D	3.00
399	TARN TARAN	KHADOOR SAHIB	S-NPP	74.88383	31.44077	13:36:00	D	1.80
400	TARN TARAN	KHADOOR SAHIB	S-NPP	74.80180	31.44964	13:36:00	D	1.90
401	TARN TARAN	KHADOOR SAHIB	S-NPP	74.96636	31.45248	13:36:00	D	4.50
402	TARN TARAN	KHADOOR SAHIB	S-NPP	74.87173	31.45963	13:36:00	D	2.70
403	TARN TARAN	KHADOOR SAHIB	S-NPP	75.16888	31.46373	13:36:00	D	2.10
404	TARN TARAN	KHADOOR SAHIB	S-NPP	75.18558	31.46605	13:36:00	D	7.80
405	TARN TARAN	KHADOOR SAHIB	S-NPP	74.99754	31.46720	13:36:00	D	3.10
406	TARN TARAN	KHADOOR SAHIB	S-NPP	74.66758	31.46798	13:36:00	D	2.10
407	TARN TARAN	KHADOOR SAHIB	S-NPP	74.67166	31.46857	13:36:00	D	3.10
408	TARN TARAN	KHADOOR SAHIB	S-NPP	74.88692	31.46866	13:36:00	D	1.90
409	TARN TARAN	KHADOOR SAHIB	S-NPP	74.66766	31.47027	13:36:00	D	2.80
410	TARN TARAN	KHADOOR SAHIB	S-NPP	74.67174	31.47086	13:36:00	D	2.90
411	TARN TARAN	KHADOOR SAHIB	S-NPP	74.83968	31.47220	13:36:00	D	4.50
412	TARN TARAN	KHADOOR SAHIB	S-NPP	75.18848	31.47335	13:36:00	D	4.30
413	TARN TARAN	KHADOOR SAHIB	S-NPP	74.66701	31.47360	13:36:00	D	2.80
414	TARN TARAN	KHADOOR SAHIB	S-NPP	74.83904	31.47554	13:36:00	D	2.80
415	TARN TARAN	KHADOOR SAHIB	S-NPP	74.84316	31.47612	13:36:00	D	2.80
416	TARN TARAN	KHADOOR SAHIB	S-NPP	74.75427	31.47707	13:36:00	D	2.80
417	TARN TARAN	KHADOOR SAHIB	S-NPP	75.00804	31.47899	13:36:00	D	7.20
418	TARN TARAN	KHADOOR SAHIB	S-NPP	74.98606	31.48275	13:36:00	D	4.20
419	TARN TARAN	KHADOOR SAHIB	S-NPP	74.85770	31.48849	13:36:00	D	6.00
420	TARN TARAN	KHADOOR SAHIB	S-NPP	74.85706	31.49183	13:36:00	D	3.50
421	TARN TARAN	KHADOOR SAHIB	S-NPP	74.86118	31.49242	13:36:00	D	16.90
422	TARN TARAN	KHADOOR SAHIB	S-NPP	75.25770	31.49335	13:36:00	D	2.40
423	TARN TARAN	KHADOOR SAHIB	S-NPP	74.92432	31.49458	13:36:00	D	2.40
424	TARN TARAN	KHADOOR SAHIB	S-NPP	74.71704	31.49786	13:36:00	D	3.20
425	TARN TARAN	KHADOOR SAHIB	S-NPP	74.72115	31.49845	13:36:00	D	3.20
426	TARN TARAN	KHADOOR SAHIB	S-NPP	74.80614	31.51741	13:36:00	D	4.00

427	TARN TARAN	KHADOOR SAHIB	S-NPP	74.90292	31.52084	13:36:00	D	3.80
428	TARN TARAN	KHADOOR SAHIB	S-NPP	74.80316	31.55468	13:36:00	D	2.40
429	TARN TARAN	PATTI	S-NPP	74.54527	31.18954	13:36:00	D	2.10
430	TARN TARAN	PATTI	S-NPP	74.66378	31.20332	13:36:00	D	9.80
431	TARN TARAN	PATTI	S-NPP	74.72147	31.20823	13:36:00	D	31.70
432	TARN TARAN	PATTI	S-NPP	74.65777	31.21270	13:36:00	D	3.60
433	TARN TARAN	PATTI	S-NPP	74.71073	31.22035	13:36:00	D	2.70
434	TARN TARAN	PATTI	S-NPP	74.90434	31.24130	13:36:00	D	4.90
435	TARN TARAN	PATTI	S-NPP	74.90845	31.24188	13:36:00	D	4.40
436	TARN TARAN	PATTI	S-NPP	74.90370	31.24463	13:36:00	D	4.90
437	TARN TARAN	PATTI	S-NPP	74.90781	31.24522	13:36:00	D	4.40
438	TARN TARAN	PATTI	S-NPP	74.62622	31.24570	13:36:00	D	3.20
439	TARN TARAN	PATTI	S-NPP	74.60931	31.24916	13:36:00	D	2.50
440	TARN TARAN	PATTI	S-NPP	74.72598	31.24991	13:36:00	D	2.00
441	TARN TARAN	PATTI	S-NPP	74.62152	31.25092	13:36:00	D	37.90
442	TARN TARAN	PATTI	S-NPP	74.62559	31.25150	13:36:00	D	37.90
443	TARN TARAN	PATTI	S-NPP	74.66698	31.25404	13:36:00	D	4.50
444	TARN TARAN	PATTI	S-NPP	74.77435	31.26032	13:36:00	D	3.70
445	TARN TARAN	PATTI	S-NPP	74.72812	31.26048	13:36:00	D	5.30
446	TARN TARAN	PATTI	S-NPP	74.77779	31.26424	13:36:00	D	4.60
447	TARN TARAN	PATTI	S-NPP	74.81463	31.26955	13:36:00	D	5.10
448	TARN TARAN	PATTI	S-NPP	74.66310	31.27398	13:36:00	D	3.20
449	TARN TARAN	PATTI	S-NPP	74.66717	31.27457	13:36:00	D	5.40
450	TARN TARAN	PATTI	S-NPP	74.66245	31.27730	13:36:00	D	3.20
451	TARN TARAN	PATTI	S-NPP	74.61976	31.28140	13:36:00	D	1.30
452	TARN TARAN	PATTI	S-NPP	74.63605	31.28375	13:36:00	D	6.80
453	TARN TARAN	PATTI	S-NPP	74.78158	31.29097	13:36:00	D	3.00
454	TARN TARAN	PATTI	S-NPP	74.73464	31.29451	13:36:00	D	7.70
455	TARN TARAN	PATTI	S-NPP	74.83140	31.29465	13:36:00	D	12.20
456	TARN TARAN	PATTI	S-NPP	74.67553	31.29627	13:36:00	D	2.30
457	TARN TARAN	PATTI	S-NPP	74.66821	31.31231	13:36:00	D	3.90
458	TARN TARAN	PATTI	TERRA	74.85400	31.31700	11:10:00	D	6.10
459	TARN TARAN	PATTI	S-NPP	74.72066	31.32328	13:36:00	D	9.50

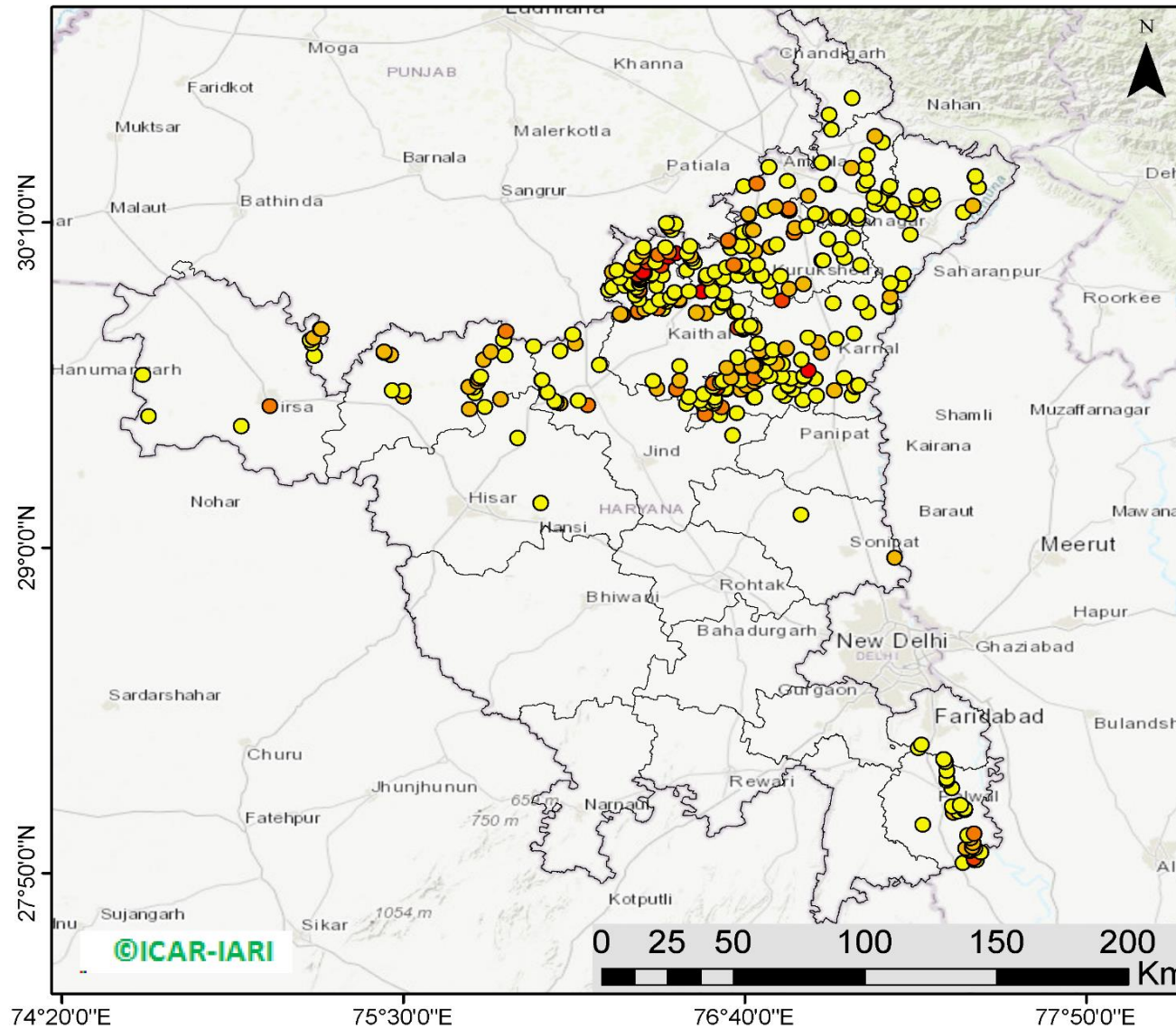
460	TARN TARAN	PATTI	S-NPP	74.61131	31.32458	13:36:00	D	1.60
461	TARN TARAN	PATTI	S-NPP	74.61539	31.32517	13:36:00	D	3.30
462	TARN TARAN	PATTI	S-NPP	74.61946	31.32576	13:36:00	D	3.30
463	TARN TARAN	PATTI	S-NPP	74.72001	31.32661	13:36:00	D	9.50
464	TARN TARAN	PATTI	S-NPP	74.63169	31.32753	13:36:00	D	13.60
465	TARN TARAN	PATTI	S-NPP	74.63577	31.32812	13:36:00	D	13.60
466	TARN TARAN	PATTI	S-NPP	74.70710	31.32817	13:36:00	D	2.10
467	TARN TARAN	PATTI	S-NPP	74.77255	31.33759	13:36:00	D	9.60
468	TARN TARAN	PATTI	AQUA	74.76200	31.34000	14:25:00	D	30.30
469	TARN TARAN	PATTI	S-NPP	74.78830	31.34328	13:36:00	D	2.60
470	TARN TARAN	PATTI	S-NPP	74.68279	31.34518	13:36:00	D	3.30
471	TARN TARAN	PATTI	S-NPP	74.66581	31.34615	13:36:00	D	7.20
472	TARN TARAN	PATTI	S-NPP	74.66990	31.34674	13:36:00	D	7.00
473	TARN TARAN	PATTI	S-NPP	74.89699	31.34854	13:36:00	D	3.20
474	TARN TARAN	PATTI	S-NPP	74.90111	31.34913	13:36:00	D	3.20
475	TARN TARAN	PATTI	S-NPP	74.60205	31.35056	13:36:00	D	4.30
476	TARN TARAN	PATTI	S-NPP	74.77343	31.35483	13:36:00	D	6.70
477	TARN TARAN	PATTI	S-NPP	74.68902	31.35634	13:36:00	D	3.00
478	TARN TARAN	PATTI	S-NPP	74.55450	31.35938	13:36:00	D	2.10
479	TARN TARAN	PATTI	S-NPP	74.68837	31.35967	13:36:00	D	15.30
480	TARN TARAN	PATTI	S-NPP	74.61694	31.36155	13:36:00	D	3.00
481	TARN TARAN	PATTI	S-NPP	74.60814	31.36370	13:36:00	D	2.00
482	TARN TARAN	PATTI	S-NPP	74.66120	31.37132	13:36:00	D	2.40
483	TARN TARAN	PATTI	S-NPP	74.72124	31.38677	13:36:00	D	5.30
484	TARN TARAN	PATTI	S-NPP	74.70832	31.38834	13:36:00	D	4.30
485	TARN TARAN	PATTI	S-NPP	74.63624	31.39166	13:36:00	D	2.60
486	TARN TARAN	PATTI	S-NPP	74.68657	31.39206	13:36:00	D	2.20
487	TARN TARAN	PATTI	S-NPP	74.60442	31.40415	13:36:00	D	4.30
488	TARN TARAN	PATTI	S-NPP	74.68548	31.41926	13:36:00	D	3.20
489	TARN TARAN	PATTI	S-NPP	74.62630	31.42098	13:36:00	D	9.50
490	TARN TARAN	PATTI	S-NPP	74.72297	31.42123	13:36:00	D	2.00

District-wise cumulative number of residue burning events in Punjab (01 to 20-Oct 2019)



(b) Haryana

RICE RESIDUE BURNING IN HARYANA



360 burning events detected in Haryana on 20th October 2019

Fire Intensity (W/m^2)

- 0 - 5
- 6 - 10
- 11 - 15
- 16 - 20
- >20

©ICAR-IARI



<http://geoportal.icar.gov.in:8080/geoexplorer/composer/>

Details of residue burning events in Haryana on 20-Oct-2019

S. No.	District	Tehsil / Block	Satellite	Longitude	Latitude	Time (IST)	Day / Night	Fire Power (W/m ²)
1	AMBALA	AMBALA	S-NPP	76.61052	30.09823	13:36:00	D	2.70
2	AMBALA	AMBALA	S-NPP	76.60992	30.10169	13:36:00	D	14.90
3	AMBALA	AMBALA	S-NPP	76.68059	30.19374	13:36:00	D	5.40
4	AMBALA	AMBALA	S-NPP	76.67999	30.19722	13:36:00	D	6.10
5	AMBALA	AMBALA	S-NPP	76.73708	30.20831	13:36:00	D	3.00
6	AMBALA	AMBALA	S-NPP	76.77091	30.22348	13:36:00	D	7.50
7	AMBALA	AMBALA	TERRA	76.88400	30.26100	11:10:00	D	5.10
8	AMBALA	AMBALA	S-NPP	76.66412	30.29595	13:36:00	D	3.20
9	AMBALA	AMBALA	S-NPP	76.95216	30.30120	13:36:00	D	7.20
10	AMBALA	AMBALA	S-NPP	76.94703	30.30414	13:36:00	D	4.10
11	AMBALA	AMBALA	S-NPP	76.70795	30.30528	13:36:00	D	10.90
12	AMBALA	AMBALA	S-NPP	76.81136	30.31526	13:36:00	D	2.20
13	AMBALA	AMBALA	S-NPP	76.74881	30.36459	13:36:00	D	3.60
14	AMBALA	AMBALA	S-NPP	76.93039	30.38068	13:36:00	D	3.20
15	AMBALA	BARARA	S-NPP	77.05408	30.17833	13:36:00	D	3.60
16	AMBALA	BARARA	TERRA	76.99900	30.17900	11:10:00	D	6.20
17	AMBALA	BARARA	TERRA	76.97900	30.18200	11:10:00	D	5.30
18	AMBALA	BARARA	S-NPP	76.98868	30.18727	13:36:00	D	3.40
19	AMBALA	BARARA	S-NPP	77.05301	30.19188	13:36:00	D	3.20
20	AMBALA	BARARA	S-NPP	77.11173	30.23184	13:36:00	D	3.60
21	AMBALA	BARARA	S-NPP	77.12714	30.25190	13:36:00	D	2.30
22	AMBALA	BARARA	S-NPP	77.10756	30.25661	13:36:00	D	2.60
23	AMBALA	BARARA	S-NPP	77.07382	30.29869	13:36:00	D	2.00
24	AMBALA	BARARA	S-NPP	77.08521	30.31458	13:36:00	D	3.80
25	AMBALA	NARAYANGARH	S-NPP	77.07743	30.36056	13:36:00	D	2.80
26	AMBALA	NARAYANGARH	S-NPP	77.03038	30.36170	13:36:00	D	6.70
27	AMBALA	NARAYANGARH	S-NPP	77.08472	30.40744	13:36:00	D	3.90
28	AMBALA	NARAYANGARH	S-NPP	77.13822	30.45404	13:36:00	D	3.10
29	AMBALA	NARAYANGARH	S-NPP	77.11086	30.47591	13:36:00	D	6.30
30	FARIDABAD	BALLABGARH	S-NPP	77.34562	28.24237	13:36:00	D	4.20

31	FARIDABAD	BALLABGARH	S-NPP	77.25919	28.28130	13:36:00	D	3.10
32	FARIDABAD	BALLABGARH	S-NPP	77.27061	28.29350	13:36:00	D	1.90
33	FATEHABAD	FATEHABAD	S-NPP	75.72614	29.49702	13:36:00	D	6.30
34	FATEHABAD	FATEHABAD	S-NPP	75.50053	29.54215	13:36:00	D	7.60
35	FATEHABAD	FATEHABAD	S-NPP	75.49117	29.54770	13:36:00	D	52.10
36	FATEHABAD	FATEHABAD	S-NPP	75.74503	29.55487	13:36:00	D	2.30
37	FATEHABAD	FATEHABAD	S-NPP	75.50089	29.56280	13:36:00	D	2.70
38	FATEHABAD	FATEHABAD	S-NPP	75.46311	29.56433	13:36:00	D	4.30
39	FATEHABAD	FATEHABAD	S-NPP	75.74150	29.57586	13:36:00	D	2.10
40	FATEHABAD	FATEHABAD	S-NPP	75.72445	29.57694	13:36:00	D	8.00
41	FATEHABAD	FATEHABAD	S-NPP	75.75715	29.60565	13:36:00	D	14.50
42	FATEHABAD	FATEHABAD	S-NPP	75.76415	29.61353	13:36:00	D	2.30
43	FATEHABAD	RATIA	S-NPP	75.45650	29.69226	13:36:00	D	8.30
44	FATEHABAD	RATIA	S-NPP	75.43433	29.69941	13:36:00	D	2.10
45	FATEHABAD	RATIA	S-NPP	75.43371	29.70275	13:36:00	D	7.90
46	FATEHABAD	TOHANA	S-NPP	75.83341	29.53272	13:36:00	D	6.30
47	FATEHABAD	TOHANA	S-NPP	75.75487	29.59497	13:36:00	D	7.10
48	FATEHABAD	TOHANA	TERRA	75.77500	29.67400	11:10:00	D	5.50
49	FATEHABAD	TOHANA	S-NPP	75.84742	29.69087	13:36:00	D	3.20
50	FATEHABAD	TOHANA	S-NPP	75.79923	29.70238	13:36:00	D	8.20
51	FATEHABAD	TOHANA	S-NPP	75.94444	29.72238	13:36:00	D	0.80
52	FATEHABAD	TOHANA	S-NPP	75.84216	29.74639	13:36:00	D	3.20
53	FATEHABAD	TOHANA	S-NPP	75.84970	29.77514	13:36:00	D	10.20
54	HISAR	HANSI	S-NPP	75.96974	29.16149	13:36:00	D	2.50
55	HISAR	HISAR	S-NPP	75.89159	29.39467	13:36:00	D	3.20
56	HISAR	HISAR	S-NPP	75.77947	29.50447	13:36:00	D	2.50
57	JIND	JIND	S-NPP	76.46760	29.51523	13:36:00	D	4.80
58	JIND	JIND	S-NPP	76.47623	29.54101	13:36:00	D	3.20
59	JIND	NARWANA	S-NPP	76.13036	29.51103	13:36:00	D	13.30
60	JIND	NARWANA	TERRA	76.03700	29.51700	11:10:00	D	5.30
61	JIND	NARWANA	S-NPP	76.02238	29.52076	13:36:00	D	2.90
62	JIND	NARWANA	S-NPP	76.01700	29.52697	13:36:00	D	1.20
63	JIND	NARWANA	S-NPP	76.09810	29.52764	13:36:00	D	4.20

64	JIND	NARWANA	S-NPP	75.99010	29.55796	13:36:00	D	4.30
65	JIND	NARWANA	S-NPP	75.99426	29.55854	13:36:00	D	4.30
66	JIND	NARWANA	S-NPP	75.97388	29.60082	13:36:00	D	3.10
67	JIND	NARWANA	S-NPP	75.97423	29.60101	13:36:00	D	3.40
68	JIND	NARWANA	S-NPP	76.17037	29.65556	13:36:00	D	2.40
69	JIND	NARWANA	S-NPP	76.03648	29.70683	13:36:00	D	2.70
70	JIND	NARWANA	TERRA	76.08800	29.73100	11:10:00	D	5.30
71	JIND	NARWANA	S-NPP	76.07825	29.76503	13:36:00	D	2.70
72	JIND	SAFIDON	S-NPP	76.62624	29.40432	13:36:00	D	2.50
73	KAITHAL	GUHLA	S-NPP	76.42802	29.91290	13:36:00	D	3.70
74	KAITHAL	GUHLA	S-NPP	76.42742	29.91633	13:36:00	D	3.70
75	KAITHAL	GUHLA	S-NPP	76.20244	29.92456	13:36:00	D	4.30
76	KAITHAL	GUHLA	S-NPP	76.30720	29.92478	13:36:00	D	14.60
77	KAITHAL	GUHLA	S-NPP	76.21397	29.93314	13:36:00	D	3.50
78	KAITHAL	GUHLA	S-NPP	76.29683	29.93390	13:36:00	D	2.90
79	KAITHAL	GUHLA	S-NPP	76.25656	29.93895	13:36:00	D	1.50
80	KAITHAL	GUHLA	S-NPP	76.27730	29.94527	13:36:00	D	2.40
81	KAITHAL	GUHLA	S-NPP	76.27670	29.94870	13:36:00	D	5.00
82	KAITHAL	GUHLA	S-NPP	76.28098	29.94928	13:36:00	D	5.00
83	KAITHAL	GUHLA	S-NPP	76.30726	29.94935	13:36:00	D	2.40
84	KAITHAL	GUHLA	S-NPP	76.30972	29.96021	13:36:00	D	1.90
85	KAITHAL	GUHLA	S-NPP	76.30851	29.96707	13:36:00	D	33.90
86	KAITHAL	GUHLA	S-NPP	76.23927	29.96760	13:36:00	D	2.30
87	KAITHAL	GUHLA	S-NPP	76.30891	29.96988	13:36:00	D	6.60
88	KAITHAL	GUHLA	S-NPP	76.34220	29.97518	13:36:00	D	3.70
89	KAITHAL	GUHLA	S-NPP	76.30341	29.97617	13:36:00	D	17.70
90	KAITHAL	GUHLA	S-NPP	76.38580	29.97759	13:36:00	D	2.40
91	KAITHAL	GUHLA	S-NPP	76.30280	29.97959	13:36:00	D	17.70
92	KAITHAL	GUHLA	S-NPP	76.35064	29.98245	13:36:00	D	2.20
93	KAITHAL	GUHLA	S-NPP	76.32365	29.98588	13:36:00	D	13.00
94	KAITHAL	GUHLA	S-NPP	76.21371	29.98867	13:36:00	D	5.40
95	KAITHAL	GUHLA	S-NPP	76.31874	29.98874	13:36:00	D	31.90
96	KAITHAL	GUHLA	S-NPP	76.26981	29.99272	13:36:00	D	3.10

97	KAITHAL	GUHLA	S-NPP	76.23016	29.99439	13:36:00	D	2.40
98	KAITHAL	GUHLA	S-NPP	76.28451	30.00871	13:36:00	D	8.80
99	KAITHAL	GUHLA	TERRA	76.38000	30.01100	11:10:00	D	17.20
100	KAITHAL	GUHLA	S-NPP	76.28390	30.01214	13:36:00	D	8.80
101	KAITHAL	GUHLA	S-NPP	76.35690	30.02195	13:36:00	D	2.10
102	KAITHAL	GUHLA	S-NPP	76.33478	30.02249	13:36:00	D	18.10
103	KAITHAL	GUHLA	S-NPP	76.36121	30.02252	13:36:00	D	3.50
104	KAITHAL	GUHLA	S-NPP	76.31396	30.04077	13:36:00	D	10.20
105	KAITHAL	GUHLA	S-NPP	76.29619	30.04187	13:36:00	D	2.70
106	KAITHAL	GUHLA	S-NPP	76.40624	30.04263	13:36:00	D	26.50
107	KAITHAL	GUHLA	TERRA	76.37200	30.05000	11:10:00	D	10.90
108	KAITHAL	GUHLA	S-NPP	76.43039	30.05645	13:36:00	D	33.60
109	KAITHAL	GUHLA	S-NPP	76.40755	30.06042	13:36:00	D	12.60
110	KAITHAL	GUHLA	S-NPP	76.31892	30.06251	13:36:00	D	7.60
111	KAITHAL	GUHLA	S-NPP	76.39588	30.07646	13:36:00	D	2.50
112	KAITHAL	GUHLA	S-NPP	76.32081	30.07682	13:36:00	D	1.80
113	KAITHAL	GUHLA	S-NPP	76.41695	30.13754	13:36:00	D	2.00
114	KAITHAL	GUHLA	S-NPP	76.40586	30.15016	13:36:00	D	3.10
115	KAITHAL	GUHLA	S-NPP	76.41020	30.15074	13:36:00	D	7.50
116	KAITHAL	GUHLA	S-NPP	76.43069	30.16053	13:36:00	D	3.00
117	KAITHAL	GUHLA	S-NPP	76.39912	30.16335	13:36:00	D	3.20
118	KAITHAL	KAITHAL	S-NPP	76.43278	29.56932	13:36:00	D	10.10
119	KAITHAL	KAITHAL	TERRA	76.36800	29.57100	11:10:00	D	8.90
120	KAITHAL	KAITHAL	S-NPP	76.35362	29.59726	13:36:00	D	2.10
121	KAITHAL	KAITHAL	S-NPP	76.44508	29.59907	13:36:00	D	9.20
122	KAITHAL	KAITHAL	S-NPP	76.60459	29.64511	13:36:00	D	6.70
123	KAITHAL	KAITHAL	S-NPP	76.44463	29.65173	13:36:00	D	1.80
124	KAITHAL	KAITHAL	S-NPP	76.64261	29.68203	13:36:00	D	2.70
125	KAITHAL	KAITHAL	S-NPP	76.66183	29.78153	13:36:00	D	6.50
126	KAITHAL	KAITHAL	S-NPP	76.65627	29.78787	13:36:00	D	3.80
127	KAITHAL	KAITHAL	S-NPP	76.66064	29.78846	13:36:00	D	3.80
128	KAITHAL	KAITHAL	S-NPP	76.64258	29.78958	13:36:00	D	17.90
129	KAITHAL	KAITHAL	S-NPP	76.65507	29.79479	13:36:00	D	4.60

130	KAITHAL	KAITHAL	S-NPP	76.68627	29.79544	13:36:00	D	2.70
131	KAITHAL	KAITHAL	TERRA	76.25100	29.83600	11:10:00	D	17.90
132	KAITHAL	KAITHAL	TERRA	76.24100	29.83800	11:10:00	D	6.30
133	KAITHAL	KAITHAL	S-NPP	76.53231	29.84037	13:36:00	D	5.20
134	KAITHAL	KAITHAL	S-NPP	76.50079	29.84321	13:36:00	D	6.40
135	KAITHAL	KAITHAL	S-NPP	76.30263	29.84456	13:36:00	D	11.90
136	KAITHAL	KAITHAL	S-NPP	76.63362	29.84678	13:36:00	D	6.30
137	KAITHAL	KAITHAL	S-NPP	76.64236	29.84793	13:36:00	D	4.50
138	KAITHAL	KAITHAL	S-NPP	76.30202	29.84798	13:36:00	D	11.90
139	KAITHAL	KAITHAL	TERRA	76.32400	29.85400	11:10:00	D	6.20
140	KAITHAL	KAITHAL	S-NPP	76.38823	29.85620	13:36:00	D	3.60
141	KAITHAL	KAITHAL	S-NPP	76.37046	29.85730	13:36:00	D	10.60
142	KAITHAL	KAITHAL	S-NPP	76.57769	29.86057	13:36:00	D	4.90
143	KAITHAL	KAITHAL	S-NPP	76.34294	29.86409	13:36:00	D	2.50
144	KAITHAL	KAITHAL	S-NPP	76.59272	29.87672	13:36:00	D	4.20
145	KAITHAL	KAITHAL	S-NPP	76.60144	29.87789	13:36:00	D	4.90
146	KAITHAL	KAITHAL	S-NPP	76.59212	29.88018	13:36:00	D	4.20
147	KAITHAL	KAITHAL	S-NPP	76.39840	29.88081	13:36:00	D	1.50
148	KAITHAL	KAITHAL	S-NPP	76.44148	29.88652	13:36:00	D	6.90
149	KAITHAL	KAITHAL	S-NPP	76.38858	29.88654	13:36:00	D	4.30
150	KAITHAL	KAITHAL	S-NPP	76.37508	29.88826	13:36:00	D	2.30
151	KAITHAL	KAITHAL	S-NPP	76.30470	29.88937	13:36:00	D	2.90
152	KAITHAL	KAITHAL	S-NPP	76.44088	29.88996	13:36:00	D	6.90
153	KAITHAL	KAITHAL	S-NPP	76.41320	29.89684	13:36:00	D	5.00
154	KAITHAL	KAITHAL	S-NPP	76.29311	29.90534	13:36:00	D	4.40
155	KAITHAL	KAITHAL	S-NPP	76.59283	29.91000	13:36:00	D	2.10
156	KAITHAL	KAITHAL	S-NPP	76.59720	29.91058	13:36:00	D	2.10
157	KAITHAL	KAITHAL	S-NPP	76.30780	29.92135	13:36:00	D	8.50
158	KAITHAL	KAITHAL	S-NPP	76.36602	29.93975	13:36:00	D	3.00
159	KARNAL	ASSANDH	S-NPP	76.58024	29.47399	13:36:00	D	2.20
160	KARNAL	ASSANDH	S-NPP	76.53111	29.47803	13:36:00	D	10.90
161	KARNAL	ASSANDH	S-NPP	76.64071	29.48198	13:36:00	D	2.40
162	KARNAL	ASSANDH	S-NPP	76.58839	29.50327	13:36:00	D	13.70

163	KARNAL	ASSANDH	TERRA	76.56000	29.51500	11:10:00	D	7.20
164	KARNAL	ASSANDH	S-NPP	76.52452	29.51587	13:36:00	D	2.50
165	KARNAL	ASSANDH	S-NPP	76.54971	29.52278	13:36:00	D	2.20
166	KARNAL	ASSANDH	S-NPP	76.51353	29.52847	13:36:00	D	2.30
167	KARNAL	ASSANDH	S-NPP	76.56635	29.52853	13:36:00	D	4.10
168	KARNAL	ASSANDH	S-NPP	76.56455	29.53886	13:36:00	D	4.60
169	KARNAL	ASSANDH	S-NPP	76.69744	29.53899	13:36:00	D	4.00
170	KARNAL	ASSANDH	S-NPP	76.70179	29.53957	13:36:00	D	4.00
171	KARNAL	ASSANDH	S-NPP	76.52712	29.55143	13:36:00	D	2.70
172	KARNAL	ASSANDH	S-NPP	76.65237	29.56834	13:36:00	D	9.40
173	KARNAL	ASSANDH	S-NPP	76.60353	29.56882	13:36:00	D	4.40
174	KARNAL	ASSANDH	S-NPP	76.57211	29.57162	13:36:00	D	15.30
175	KARNAL	ASSANDH	S-NPP	76.60294	29.57227	13:36:00	D	4.40
176	KARNAL	ASSANDH	S-NPP	76.57150	29.57507	13:36:00	D	15.30
177	KARNAL	ASSANDH	S-NPP	76.55856	29.57900	13:36:00	D	3.00
178	KARNAL	ASSANDH	TERRA	76.67300	29.58100	11:10:00	D	5.10
179	KARNAL	ASSANDH	TERRA	76.56000	29.58900	11:10:00	D	12.60
180	KARNAL	ASSANDH	S-NPP	76.70155	29.59266	13:36:00	D	4.40
181	KARNAL	ASSANDH	S-NPP	76.58267	29.59277	13:36:00	D	2.90
182	KARNAL	ASSANDH	S-NPP	76.69795	29.59382	13:36:00	D	7.20
183	KARNAL	ASSANDH	S-NPP	76.59073	29.59737	13:36:00	D	3.00
184	KARNAL	ASSANDH	S-NPP	76.65263	29.59848	13:36:00	D	4.30
185	KARNAL	ASSANDH	S-NPP	76.71858	29.60360	13:36:00	D	2.60
186	KARNAL	ASSANDH	S-NPP	76.69992	29.60824	13:36:00	D	14.40
187	KARNAL	ASSANDH	S-NPP	76.61984	29.60829	13:36:00	D	9.40
188	KARNAL	ASSANDH	S-NPP	76.75240	29.61513	13:36:00	D	4.30
189	KARNAL	ASSANDH	S-NPP	76.65789	29.64516	13:36:00	D	2.60
190	KARNAL	ASSANDH	S-NPP	76.65730	29.64861	13:36:00	D	5.30
191	KARNAL	ASSANDH	TERRA	76.70300	29.65100	11:10:00	D	5.20
192	KARNAL	ASSANDH	TERRA	76.69300	29.65200	11:10:00	D	9.70
193	KARNAL	GHARAUNDA	S-NPP	76.86484	29.52912	13:36:00	D	2.30
194	KARNAL	GHARAUNDA	S-NPP	76.91163	29.54592	13:36:00	D	2.90
195	KARNAL	GHARAUNDA	S-NPP	76.80350	29.54595	13:36:00	D	2.60

196	KARNAL	GHARAUNDA	S-NPP	77.03410	29.54753	13:36:00	D	3.10
197	KARNAL	GHARAUNDA	S-NPP	76.78796	29.55811	13:36:00	D	3.30
198	KARNAL	GHARAUNDA	S-NPP	76.97195	29.56451	13:36:00	D	8.40
199	KARNAL	GHARAUNDA	S-NPP	76.83127	29.56740	13:36:00	D	1.10
200	KARNAL	GHARAUNDA	S-NPP	77.04277	29.57731	13:36:00	D	5.90
201	KARNAL	GHARAUNDA	S-NPP	76.81571	29.57956	13:36:00	D	4.80
202	KARNAL	GHARAUNDA	S-NPP	77.04218	29.58082	13:36:00	D	5.90
203	KARNAL	GHARAUNDA	S-NPP	77.05561	29.58257	13:36:00	D	4.70
204	KARNAL	GHARAUNDA	S-NPP	76.81511	29.58303	13:36:00	D	3.80
205	KARNAL	INDRI	S-NPP	77.08733	29.84502	13:36:00	D	2.50
206	KARNAL	INDRI	S-NPP	77.16335	29.86218	13:36:00	D	2.10
207	KARNAL	INDRI	S-NPP	77.15955	29.86485	13:36:00	D	4.00
208	KARNAL	INDRI	S-NPP	77.06450	29.87796	13:36:00	D	3.00
209	KARNAL	INDRI	S-NPP	77.16334	29.89780	13:36:00	D	5.20
210	KARNAL	INDRI	S-NPP	77.16416	29.94846	13:36:00	D	2.70
211	KARNAL	KARNAL	S-NPP	76.85734	29.59933	13:36:00	D	1.60
212	KARNAL	KARNAL	S-NPP	76.82473	29.60565	13:36:00	D	3.40
213	KARNAL	KARNAL	S-NPP	76.90594	29.60580	13:36:00	D	3.10
214	KARNAL	KARNAL	S-NPP	76.82566	29.60692	13:36:00	D	3.90
215	KARNAL	KARNAL	S-NPP	77.00554	29.60826	13:36:00	D	2.30
216	KARNAL	KARNAL	S-NPP	76.86879	29.61155	13:36:00	D	5.00
217	KARNAL	KARNAL	S-NPP	76.86979	29.61264	13:36:00	D	12.80
218	KARNAL	KARNAL	S-NPP	76.78868	29.61277	13:36:00	D	3.10
219	KARNAL	KARNAL	S-NPP	76.79308	29.61334	13:36:00	D	3.60
220	KARNAL	KARNAL	S-NPP	76.86820	29.61503	13:36:00	D	5.00
221	KARNAL	KARNAL	S-NPP	76.73627	29.63074	13:36:00	D	3.00
222	KARNAL	KARNAL	S-NPP	76.88391	29.63585	13:36:00	D	21.50
223	KARNAL	KARNAL	S-NPP	76.79411	29.65967	13:36:00	D	2.90
224	KARNAL	KARNAL	S-NPP	76.77593	29.66083	13:36:00	D	6.30
225	KARNAL	KARNAL	TERRA	76.86100	29.67400	11:10:00	D	4.80
226	KARNAL	KARNAL	S-NPP	76.74981	29.68222	13:36:00	D	1.20
227	KARNAL	KARNAL	TERRA	76.92900	29.70000	11:10:00	D	5.30
228	KARNAL	KARNAL	S-NPP	76.73308	29.70128	13:36:00	D	4.90

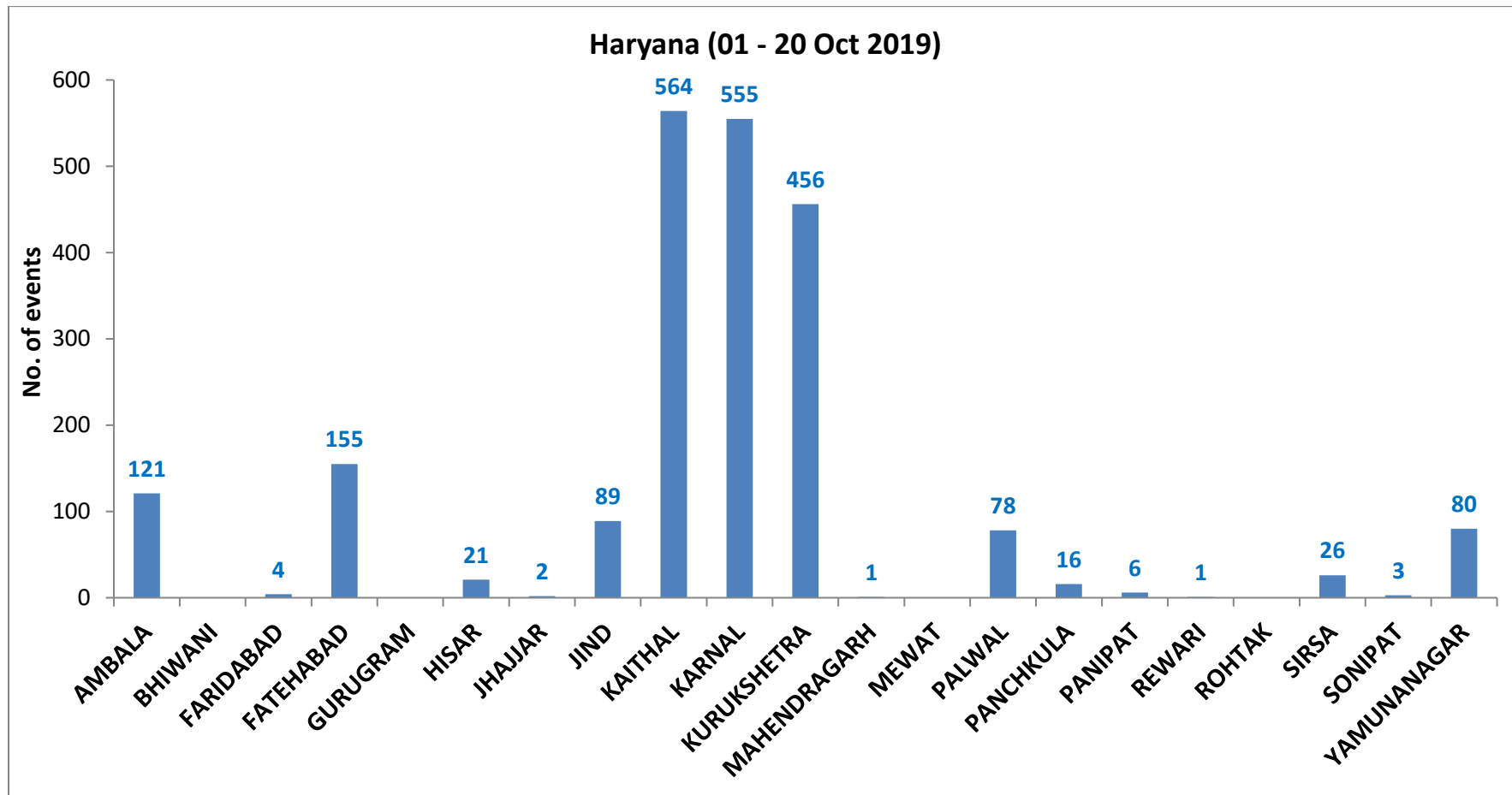
229	KARNAL	KARNAL	TERRA	76.72000	29.70400	11:10:00	D	24.80
230	KARNAL	KARNAL	S-NPP	76.73248	29.70475	13:36:00	D	4.90
231	KARNAL	KARNAL	S-NPP	76.71935	29.70760	13:36:00	D	7.40
232	KARNAL	KARNAL	S-NPP	76.76319	29.70887	13:36:00	D	1.90
233	KARNAL	KARNAL	S-NPP	76.80717	29.71476	13:36:00	D	6.40
234	KARNAL	KARNAL	S-NPP	76.80788	29.71559	13:36:00	D	6.40
235	KARNAL	KARNAL	S-NPP	76.71077	29.73131	13:36:00	D	3.90
236	KARNAL	KARNAL	S-NPP	76.91750	29.73690	13:36:00	D	5.30
237	KARNAL	KARNAL	S-NPP	76.97942	29.74846	13:36:00	D	2.10
238	KARNAL	KARNAL	S-NPP	77.04053	29.76707	13:36:00	D	3.40
239	KARNAL	NILOKHERI	S-NPP	76.88280	29.75382	13:36:00	D	2.70
240	KARNAL	NILOKHERI	S-NPP	76.70060	29.79026	13:36:00	D	9.10
241	KARNAL	NILOKHERI	S-NPP	76.96807	29.87631	13:36:00	D	2.00
242	KURUKSHETRA	PEHOWA	S-NPP	76.52015	29.91809	13:36:00	D	21.40
243	KURUKSHETRA	PEHOWA	S-NPP	76.47556	29.91923	13:36:00	D	2.60
244	KURUKSHETRA	PEHOWA	S-NPP	76.55494	29.92269	13:36:00	D	4.90
245	KURUKSHETRA	PEHOWA	S-NPP	76.53406	29.96586	13:36:00	D	7.50
246	KURUKSHETRA	PEHOWA	S-NPP	76.53841	29.96644	13:36:00	D	9.20
247	KURUKSHETRA	PEHOWA	S-NPP	76.59194	29.96651	13:36:00	D	1.80
248	KURUKSHETRA	PEHOWA	S-NPP	76.69346	29.97643	13:36:00	D	3.20
249	KURUKSHETRA	PEHOWA	S-NPP	76.53661	29.97680	13:36:00	D	4.40
250	KURUKSHETRA	PEHOWA	S-NPP	76.64391	29.97696	13:36:00	D	3.30
251	KURUKSHETRA	PEHOWA	S-NPP	76.56592	29.98780	13:36:00	D	3.80
252	KURUKSHETRA	PEHOWA	S-NPP	76.46760	29.99468	02:18:00	N	3.80
253	KURUKSHETRA	PEHOWA	S-NPP	76.60343	30.00346	13:36:00	D	4.80
254	KURUKSHETRA	PEHOWA	S-NPP	76.66605	30.00475	13:36:00	D	4.90
255	KURUKSHETRA	PEHOWA	S-NPP	76.64288	30.00875	13:36:00	D	2.80
256	KURUKSHETRA	PEHOWA	S-NPP	76.66046	30.01110	13:36:00	D	4.50
257	KURUKSHETRA	PEHOWA	S-NPP	76.62994	30.01214	13:36:00	D	11.20
258	KURUKSHETRA	PEHOWA	S-NPP	76.62852	30.01392	13:36:00	D	11.50
259	KURUKSHETRA	PEHOWA	S-NPP	76.49403	30.02260	13:36:00	D	2.80
260	KURUKSHETRA	PEHOWA	S-NPP	76.48293	30.03525	13:36:00	D	2.50
261	KURUKSHETRA	PEHOWA	S-NPP	76.48728	30.03583	13:36:00	D	2.50

262	KURUKSHETRA	PEHOWA	S-NPP	76.48112	30.04559	13:36:00	D	6.10
263	KURUKSHETRA	PEHOWA	S-NPP	76.47002	30.05823	13:36:00	D	1.80
264	KURUKSHETRA	PEHOWA	S-NPP	76.61911	30.07454	13:36:00	D	2.50
265	KURUKSHETRA	PEHOWA	S-NPP	76.47946	30.08067	13:36:00	D	3.60
266	KURUKSHETRA	PEHOWA	S-NPP	76.67633	30.08212	13:36:00	D	1.50
267	KURUKSHETRA	PEHOWA	S-NPP	76.65369	30.08267	13:36:00	D	3.70
268	KURUKSHETRA	PEHOWA	S-NPP	76.65986	30.13060	13:36:00	D	2.60
269	KURUKSHETRA	PEHOWA	S-NPP	76.68578	30.13752	13:36:00	D	2.10
270	KURUKSHETRA	PEHOWA	S-NPP	76.69463	30.13867	13:36:00	D	8.80
271	KURUKSHETRA	SHAHABAD	TERRA	76.83600	30.12900	11:10:00	D	11.90
272	KURUKSHETRA	SHAHABAD	S-NPP	76.83797	30.14627	13:36:00	D	5.10
273	KURUKSHETRA	SHAHABAD	S-NPP	76.83897	30.14660	13:36:00	D	7.20
274	KURUKSHETRA	SHAHABAD	S-NPP	76.87935	30.15177	13:36:00	D	3.10
275	KURUKSHETRA	SHAHABAD	S-NPP	76.92741	30.19378	13:36:00	D	8.50
276	KURUKSHETRA	SHAHABAD	S-NPP	76.90817	30.19847	13:36:00	D	4.10
277	KURUKSHETRA	SHAHABAD	S-NPP	76.81921	30.20838	13:36:00	D	2.80
278	KURUKSHETRA	SHAHABAD	S-NPP	76.81413	30.21130	13:36:00	D	2.80
279	KURUKSHETRA	SHAHABAD	S-NPP	76.81801	30.21538	13:36:00	D	10.90
280	KURUKSHETRA	THANESAR	S-NPP	76.79333	29.88564	13:36:00	D	16.10
281	KURUKSHETRA	THANESAR	S-NPP	76.75142	29.91924	13:36:00	D	2.50
282	KURUKSHETRA	THANESAR	S-NPP	76.81780	29.92809	13:36:00	D	6.20
283	KURUKSHETRA	THANESAR	S-NPP	76.86644	29.94560	13:36:00	D	5.50
284	KURUKSHETRA	THANESAR	S-NPP	76.74679	29.95500	13:36:00	D	4.80
285	KURUKSHETRA	THANESAR	S-NPP	76.78868	29.97473	13:36:00	D	2.90
286	KURUKSHETRA	THANESAR	S-NPP	76.72051	29.97645	13:36:00	D	3.50
287	KURUKSHETRA	THANESAR	S-NPP	76.72492	29.97703	13:36:00	D	4.80
288	KURUKSHETRA	THANESAR	S-NPP	77.06186	30.01382	13:36:00	D	2.50
289	KURUKSHETRA	THANESAR	S-NPP	76.70951	30.01410	13:36:00	D	2.30
290	KURUKSHETRA	THANESAR	S-NPP	76.93004	30.02900	13:36:00	D	2.50
291	KURUKSHETRA	THANESAR	S-NPP	76.93452	30.02959	13:36:00	D	3.80
292	KURUKSHETRA	THANESAR	S-NPP	77.00665	30.03903	13:36:00	D	2.40
293	KURUKSHETRA	THANESAR	S-NPP	76.70202	30.06417	13:36:00	D	7.50
294	KURUKSHETRA	THANESAR	S-NPP	76.99358	30.06974	13:36:00	D	3.30

295	KURUKSHETRA	THANESAR	S-NPP	76.75396	30.07810	13:36:00	D	9.70
296	KURUKSHETRA	THANESAR	S-NPP	76.77498	30.08798	13:36:00	D	3.40
297	KURUKSHETRA	THANESAR	S-NPP	76.95026	30.10725	13:36:00	D	5.00
298	KURUKSHETRA	THANESAR	S-NPP	77.03750	30.11133	13:36:00	D	1.50
299	PALWAL	HATHIN	S-NPP	77.27461	28.00672	13:36:00	D	2.10
300	PALWAL	HODAL	S-NPP	77.41235	27.87049	13:36:00	D	3.50
301	PALWAL	HODAL	S-NPP	77.45133	27.87914	13:36:00	D	4.60
302	PALWAL	HODAL	S-NPP	77.45574	27.87971	13:36:00	D	4.60
303	PALWAL	HODAL	S-NPP	77.45018	27.88615	13:36:00	D	16.40
304	PALWAL	HODAL	S-NPP	77.47374	27.90714	13:36:00	D	2.40
305	PALWAL	HODAL	S-NPP	77.43674	27.91305	13:36:00	D	5.40
306	PALWAL	HODAL	S-NPP	77.42738	27.91539	13:36:00	D	6.30
307	PALWAL	HODAL	S-NPP	77.43177	27.91597	13:36:00	D	6.30
308	PALWAL	HODAL	S-NPP	77.42680	27.91890	13:36:00	D	51.30
309	PALWAL	HODAL	S-NPP	77.42181	27.92182	13:36:00	D	9.50
310	PALWAL	HODAL	S-NPP	77.45320	27.92238	13:36:00	D	5.60
311	PALWAL	HODAL	S-NPP	77.44324	27.92823	13:36:00	D	6.00
312	PALWAL	HODAL	S-NPP	77.44533	27.94284	13:36:00	D	8.20
313	PALWAL	HODAL	S-NPP	77.43804	27.95979	13:36:00	D	6.10
314	PALWAL	HODAL	S-NPP	77.42849	27.96972	13:36:00	D	4.20
315	PALWAL	HODAL	S-NPP	77.44997	27.97608	13:36:00	D	12.40
316	PALWAL	PALWAL	S-NPP	77.37936	28.04920	13:36:00	D	6.10
317	PALWAL	PALWAL	S-NPP	77.39639	28.05505	13:36:00	D	2.20
318	PALWAL	PALWAL	S-NPP	77.41785	28.06148	13:36:00	D	3.80
319	PALWAL	PALWAL	S-NPP	77.41727	28.06499	13:36:00	D	3.80
320	PALWAL	PALWAL	S-NPP	77.37607	28.07401	13:36:00	D	2.10
321	PALWAL	PALWAL	S-NPP	77.40252	28.07744	13:36:00	D	2.60
322	PALWAL	PALWAL	S-NPP	77.37444	28.13823	13:36:00	D	3.80
323	PALWAL	PALWAL	S-NPP	77.35658	28.16450	13:36:00	D	4.40
324	PALWAL	PALWAL	S-NPP	77.35724	28.17230	13:36:00	D	3.20
325	PALWAL	PALWAL	S-NPP	77.35700	28.20091	13:36:00	D	4.90
326	PALWAL	PALWAL	S-NPP	77.35177	28.23244	13:36:00	D	2.70
327	PANCHKULA	PANCHKULA	S-NPP	76.96351	30.49984	13:36:00	D	3.20

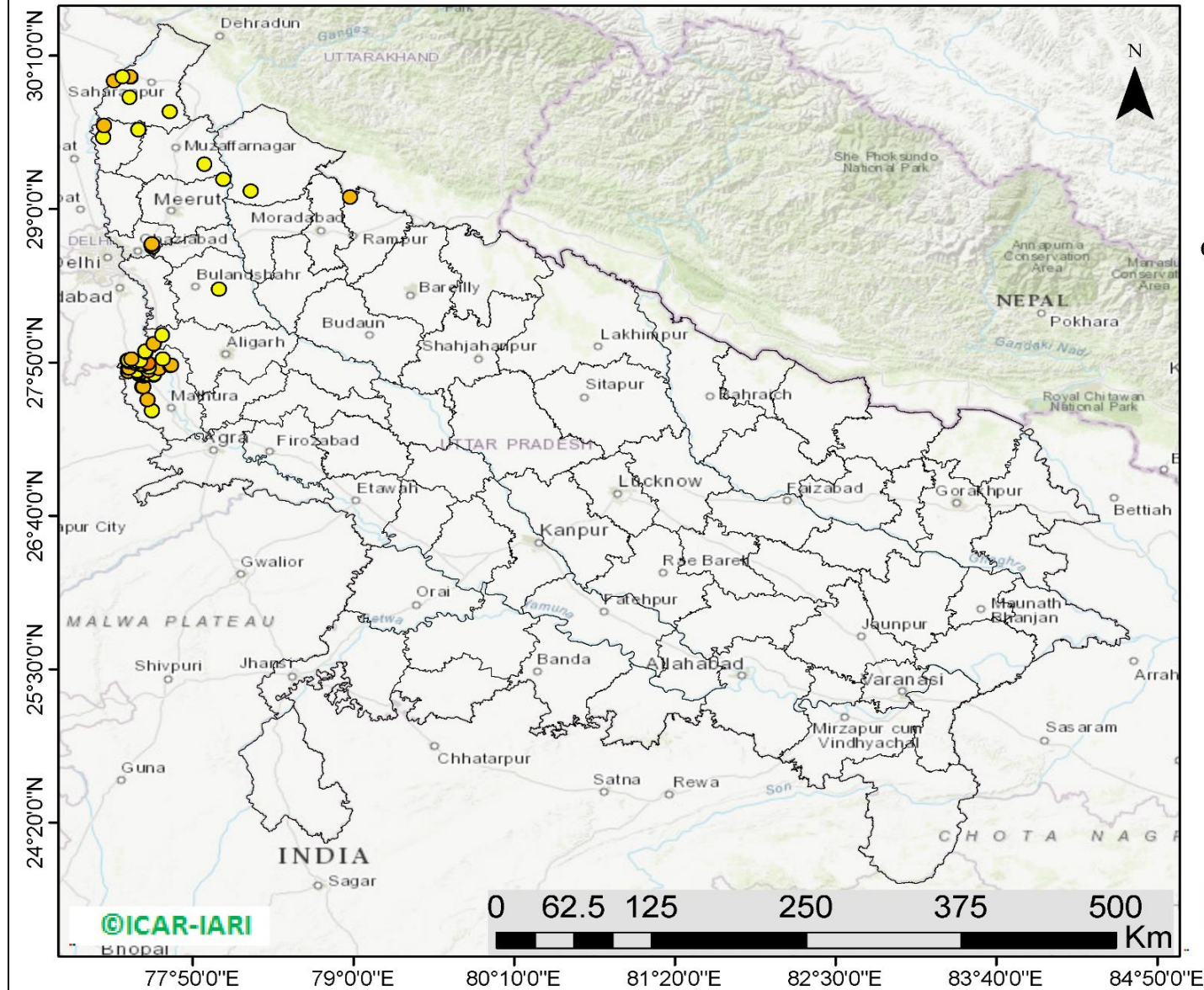
328	PANCHKULA	PANCHKULA	S-NPP	76.95448	30.55273	13:36:00	D	1.90
329	PANCHKULA	PANCHKULA	S-NPP	77.03473	30.61257	13:36:00	D	2.80
330	SIRSA	ELLENABAD	S-NPP	74.63035	29.47070	13:36:00	D	4.60
331	SIRSA	RANIA	S-NPP	74.60975	29.62034	13:36:00	D	1.70
332	SIRSA	SIRSA	S-NPP	74.94686	29.43664	13:36:00	D	2.10
333	SIRSA	SIRSA	S-NPP	75.04410	29.50764	13:36:00	D	10.30
334	SIRSA	SIRSA	S-NPP	75.19551	29.68917	13:36:00	D	4.90
335	SIRSA	SIRSA	S-NPP	75.18839	29.73106	13:36:00	D	5.00
336	SIRSA	SIRSA	S-NPP	75.18185	29.74381	13:36:00	D	1.90
337	SIRSA	SIRSA	S-NPP	75.19269	29.75220	13:36:00	D	5.60
338	SIRSA	SIRSA	S-NPP	75.21590	29.78292	13:36:00	D	4.30
339	SIRSA	SIRSA	S-NPP	75.21994	29.78350	13:36:00	D	5.20
340	SONIPAT	SONIPAT	S-NPP	77.17889	28.96332	13:36:00	D	5.30
341	SONIPAT	SONIPAT	S-NPP	76.85868	29.11879	13:36:00	D	2.40
342	YAMUNANAGAR	CHHACHHRAULII	S-NPP	77.41445	30.20314	13:36:00	D	3.80
343	YAMUNANAGAR	CHHACHHRAULII	S-NPP	77.44585	30.22653	13:36:00	D	6.10
344	YAMUNANAGAR	CHHACHHRAULII	S-NPP	77.29124	30.23284	13:36:00	D	2.50
345	YAMUNANAGAR	CHHACHHRAULII	S-NPP	77.30872	30.24232	13:36:00	D	3.60
346	YAMUNANAGAR	CHHACHHRAULII	S-NPP	77.30515	30.26373	13:36:00	D	4.60
347	YAMUNANAGAR	CHHACHHRAULII	S-NPP	77.46420	30.29112	13:36:00	D	3.70
348	YAMUNANAGAR	CHHACHHRAULII	S-NPP	77.45291	30.33004	13:36:00	D	3.10
349	YAMUNANAGAR	CHHACHHRAULII	S-NPP	77.45447	30.33159	13:36:00	D	2.50
350	YAMUNANAGAR	JAGADHRI	S-NPP	77.19800	29.94200	13:36:00	D	4.90
351	YAMUNANAGAR	JAGADHRI	S-NPP	77.20730	29.98183	13:36:00	D	2.00
352	YAMUNANAGAR	JAGADHRI	S-NPP	77.23249	30.12175	13:36:00	D	1.60
353	YAMUNANAGAR	JAGADHRI	S-NPP	77.23086	30.19621	13:36:00	D	4.30
354	YAMUNANAGAR	JAGADHRI	S-NPP	77.20589	30.20396	13:36:00	D	4.00
355	YAMUNANAGAR	JAGADHRI	TERRA	77.16300	30.22800	11:10:00	D	8.10
356	YAMUNANAGAR	JAGADHRI	S-NPP	77.17280	30.23240	13:36:00	D	2.80
357	YAMUNANAGAR	JAGADHRI	S-NPP	77.25505	30.25010	13:36:00	D	8.50
358	YAMUNANAGAR	JAGADHRI	S-NPP	77.25327	30.26078	13:36:00	D	4.90
359	YAMUNANAGAR	JAGADHRI	S-NPP	77.15865	30.28855	13:36:00	D	1.20
360	YAMUNANAGAR	JAGADHRI	S-NPP	77.16208	30.29624	13:36:00	D	2.70

District-wise cumulative number of residue burning events in Haryana (01 to 20-Oct 2019)



(c) UP

RICE RESIDUE BURNING IN UTTAR PRADESH



62 burning events detected in Uttar Pradesh on 20th October 2019

Fire Intensity (W/m²)

- 0 - 5
- 6 - 10
- 11 - 15
- 16 - 20
- >20



<http://geoportal.icar.gov.in:8080/geoexplorer/composer/>

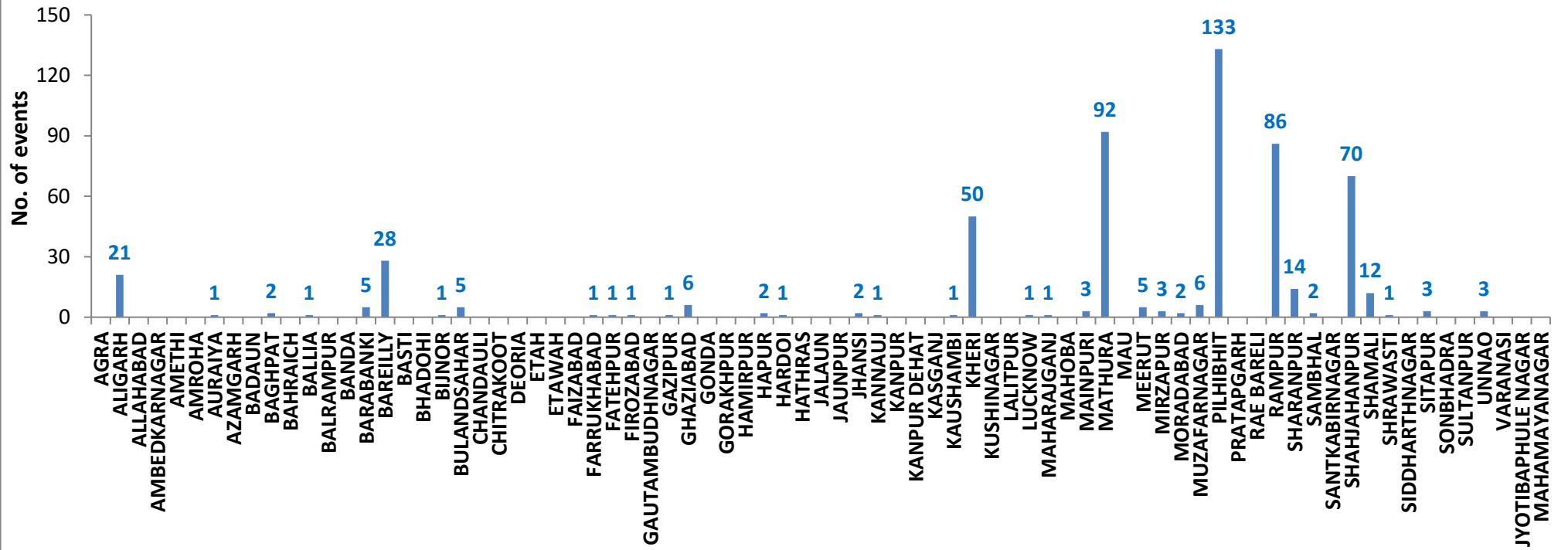
Details of residue burning events in Uttar Pradesh on 20-Oct-2019

S. No.	District	Tehsil / Block	Satellite	Longitude	Latitude	Time (IST)	Day / Night	Fire Power (W/m2)
1	ALIGARH	KHAIR	S-NPP	77.54874	27.97450	13:36:00	D	6.20
2	ALIGARH	KHAIR	S-NPP	77.61216	28.04025	13:36:00	D	2.20
3	BIJNOR	CHANDPUR	S-NPP	78.25324	29.13368	13:36:00	D	2.20
4	BULANDSAHAR	ANUP SHAHR	S-NPP	78.02494	28.38984	13:36:00	D	3.80
5	GHAZIABAD	GHAZIABAD	S-NPP	77.53907	28.70927	13:36:00	D	2.10
6	GHAZIABAD	GHAZIABAD	S-NPP	77.53237	28.72886	13:36:00	D	5.80
7	GHAZIABAD	GHAZIABAD	S-NPP	77.53558	28.73056	13:36:00	D	16.40
8	GHAZIABAD	GHAZIABAD	S-NPP	77.53634	28.73299	13:36:00	D	5.80
9	MATHURA	CHHATA	S-NPP	77.46856	27.64466	13:36:00	D	7.40
10	MATHURA	CHHATA	S-NPP	77.47003	27.64493	13:36:00	D	15.00
11	MATHURA	CHHATA	S-NPP	77.47295	27.64524	13:36:00	D	7.40
12	MATHURA	CHHATA	S-NPP	77.47812	27.73189	13:36:00	D	4.80
13	MATHURA	CHHATA	S-NPP	77.46437	27.73364	13:36:00	D	4.50
14	MATHURA	CHHATA	S-NPP	77.54918	27.73771	13:36:00	D	2.60
15	MATHURA	CHHATA	S-NPP	77.48078	27.74299	13:36:00	D	4.80
16	MATHURA	CHHATA	S-NPP	77.50775	27.74299	13:36:00	D	2.10
17	MATHURA	CHHATA	S-NPP	77.44453	27.74531	13:36:00	D	3.60
18	MATHURA	CHHATA	S-NPP	77.55245	27.74533	13:36:00	D	4.20
19	MATHURA	CHHATA	S-NPP	77.44833	27.74940	13:36:00	D	2.90
20	MATHURA	CHHATA	S-NPP	77.46138	27.75870	13:36:00	D	11.80
21	MATHURA	CHHATA	S-NPP	77.42512	27.76115	13:36:00	D	6.90
22	MATHURA	CHHATA	S-NPP	77.36658	27.76422	13:36:00	D	4.20
23	MATHURA	CHHATA	S-NPP	77.36600	27.76771	13:36:00	D	5.70
24	MATHURA	CHHATA	S-NPP	77.42834	27.76872	13:36:00	D	3.20
25	MATHURA	CHHATA	S-NPP	77.51306	27.77256	13:36:00	D	9.60
26	MATHURA	CHHATA	S-NPP	77.58779	27.78581	13:36:00	D	6.90
27	MATHURA	CHHATA	S-NPP	77.36688	27.78923	13:36:00	D	9.50
28	MATHURA	CHHATA	S-NPP	77.37125	27.78981	13:36:00	D	9.50
29	MATHURA	CHHATA	S-NPP	77.51402	27.79421	13:36:00	D	2.60
30	MATHURA	CHHATA	S-NPP	77.67085	27.80733	13:36:00	D	4.80
31	MATHURA	CHHATA	S-NPP	77.46648	27.80950	13:36:00	D	7.70

32	MATHURA	CHHATA	S-NPP	77.67925	27.81202	13:36:00	D	5.20
33	MATHURA	CHHATA	S-NPP	77.45155	27.81827	13:36:00	D	6.40
34	MATHURA	CHHATA	S-NPP	77.50940	27.82231	13:36:00	D	12.00
35	MATHURA	CHHATA	S-NPP	77.50883	27.82582	13:36:00	D	12.00
36	MATHURA	CHHATA	S-NPP	77.41415	27.82763	13:36:00	D	13.60
37	MATHURA	CHHATA	S-NPP	77.36810	27.83580	13:36:00	D	6.30
38	MATHURA	CHHATA	S-NPP	77.42555	27.83989	13:36:00	D	4.70
39	MATHURA	CHHATA	S-NPP	77.42060	27.84280	13:36:00	D	4.70
40	MATHURA	CHHATA	S-NPP	77.45631	27.84398	13:36:00	D	4.90
41	MATHURA	CHHATA	S-NPP	77.37074	27.84686	13:36:00	D	5.00
42	MATHURA	CHHATA	S-NPP	77.36143	27.84919	13:36:00	D	3.60
43	MATHURA	CHHATA	S-NPP	77.36211	27.84967	13:36:00	D	6.30
44	MATHURA	CHHATA	S-NPP	77.36580	27.84977	13:36:00	D	5.00
45	MATHURA	CHHATA	S-NPP	77.38778	27.85657	13:36:00	D	6.10
46	MATHURA	CHHATA	S-NPP	77.49144	27.90946	13:36:00	D	4.70
47	MATHURA	CHHATA	S-NPP	77.49029	27.91648	13:36:00	D	4.40
48	MATHURA	MAT	S-NPP	77.61696	27.85803	13:36:00	D	5.00
49	MATHURA	MATHURA	S-NPP	77.53706	27.46715	13:36:00	D	3.30
50	MATHURA	MATHURA	S-NPP	77.50659	27.54948	13:36:00	D	6.20
51	MEERUT	MAWANA	S-NPP	78.05421	29.22325	13:36:00	D	2.30
52	MUZAFARNAGAR	JANSATH	S-NPP	77.91914	29.34041	13:36:00	D	3.70
53	RAMPUR	TANDA	S-NPP	78.97403	29.09142	13:36:00	D	9.60
54	SHAMLI	KAIRANA	S-NPP	77.18424	29.54589	13:36:00	D	2.30
55	SHAMLI	KAIRANA	TERRA	77.18900	29.63400	11:10:00	D	5.60
56	SHAMLI	SHAMLI	S-NPP	77.43855	29.60274	13:36:00	D	1.20
57	SHARANPUR	DEOBAND	S-NPP	77.66720	29.73891	13:36:00	D	3.60
58	SHARANPUR	NAKUR	S-NPP	77.37685	29.84989	13:36:00	D	4.60
59	SHARANPUR	NAKUR	S-NPP	77.26343	29.97217	13:36:00	D	8.20
60	SHARANPUR	NAKUR	S-NPP	77.38169	30.00200	13:36:00	D	5.50
61	SHARANPUR	NAKUR	S-NPP	77.37875	30.00329	13:36:00	D	5.40
62	SHARANPUR	NAKUR	S-NPP	77.32632	30.00402	13:36:00	D	2.40

District-wise cumulative number of residue burning events in Uttar Pradesh (01 to 20-Oct 2019)

Uttar Pradesh (01 - 20 Oct 2019)



State-wise, date-wise and district-wise number of residue burning events detected in 2016, 2017, 2018 and 2019
(Period: 01-Oct to 20-Oct)

Date	Punjab				Haryana				UP				Total			
	2019	2018	2017	2016	2019	2018	2017	2016	2019	2018	2017	2016	2019	2018	2017	2016
01-Oct	3	16	54	109	1	9	13	46	1	11	2	23	5	36	69	178
02-Oct	20	9	50	51	2	23	27	16	0	21	8	20	23	53	85	87
03-Oct	37	4	62	66	16	9	40	16	3	12	17	16	56	25	119	98
04-Oct	3	32	103	37	30	16	60	7	4	5	22	15	37	53	185	59
05-Oct	16	56	106	95	37	30	68	15	11	10	20	14	64	96	194	124
06-Oct	0	87	138	152	22	63	75	105	8	13	39	6	30	163	252	263
07-Oct	27	162	105	171	16	180	97	126	4	69	33	24	47	411	235	321
08-Oct	59	39	215	166	69	40	218	94	18	54	76	14	146	133	509	274
09-Oct	93	75	163	270	70	47	148	121	17	32	88	22	180	154	399	413
10-Oct	172	23	164	597	157	37	151	242	53	21	126	74	382	81	441	913
11-Oct	78	30	177	652	126	78	87	336	38	24	74	128	242	131	338	1116
12-Oct	99	67	342	694	154	133	123	338	42	22	51	164	295	222	516	1196
13-Oct	108	62	470	467	159	147	207	284	33	61	69	102	300	270	746	853
14-Oct	141	112	582	812	133	153	333	328	39	57	137	60	313	322	1052	1200
15-Oct	262	90	943	1215	203	110	458	248	63	35	237	76	528	235	1638	1539
16-Oct	168	174	465	1478	148	138	186	385	77	20	71	125	393	332	722	1988
17-Oct	250	272	807	2173	152	268	244	399	53	94	69	261	455	634	1120	2833
18-Oct	100	263	970	1065	103	255	306	270	39	163	108	204	242	681	1384	1539
19-Oct	529	254	1591	1762	220	208	541	276	3	108	128	132	752	570	2260	2170
20-Oct	490	496	2653	1175	360	141	597	188	62	49	255	62	912	686	3505	1425
Total	2655	2323	10160	13207	2178	2085	3979	3840	568	881	1630	1542	5401	5289	15769	18589

(a) Punjab

Districts	01-20 Oct			
	2016	2017	2018	2019
AMRITSAR	948	788	541	459
BARNALA	38	35	13	10
BATHINDA	832	751	74	42
FARIDKOT	1005	1141	133	121
FATEHGARH SAHIB	748	427	55	56
FAZILKA	0	0	0	89
FIROZPUR	1488	1333	233	212
GURDASPUR	608	394	89	166
HOSHIARPUR	131	79	4	20
JALANDHAR	855	412	30	104
KAPURTHALA	756	253	9	82
LUDHIANA	653	614	60	29
MANSA	174	221	62	74
MOGA	188	161	19	25
MUKTSAR	1124	617	84	50
NAWASHAHR (SBS Nagar)	268	179	27	35
PATHANKOT	0	0	0	0
PATIALA	1094	1060	309	354
RUPNAGAR	160	46	1	4
SANGRUR	266	282	110	67
SAS NAGAR	71	73	47	39
TARN TARAN	1800	1294	423	617
Total	13207	10160	2323	2655

(b) Haryana

Districts	01-20 Oct			
	2016	2017	2018	2019
AMBALA	251	248	62	121
BHIWANI	2	2	3	0
FARIDABAD	30	92	66	4
FATEHABAD	223	336	118	155
GURUGRAM	0	0	0	0
HISAR	32	33	15	21
JHAJJAR	4	3	5	2
JIND	126	176	87	89
KAITHAL	1034	872	612	564
KARNAL	1121	1055	549	555
KURUKSHETRA	779	854	442	456
MAHENDRAGARH	0	0	0	1
MEWAT	0	0	0	0
PALWAL	0	0	0	78
PANCHKULA	0	0	3	16
PANIPAT	28	40	33	6
REWARI	0	0	0	1
ROHTAK	3	3	0	0
SIRSA	109	97	30	26
SONIPAT	9	18	11	3
YAMUNANAGAR	89	150	49	80
Total	3840	3979	2085	2178

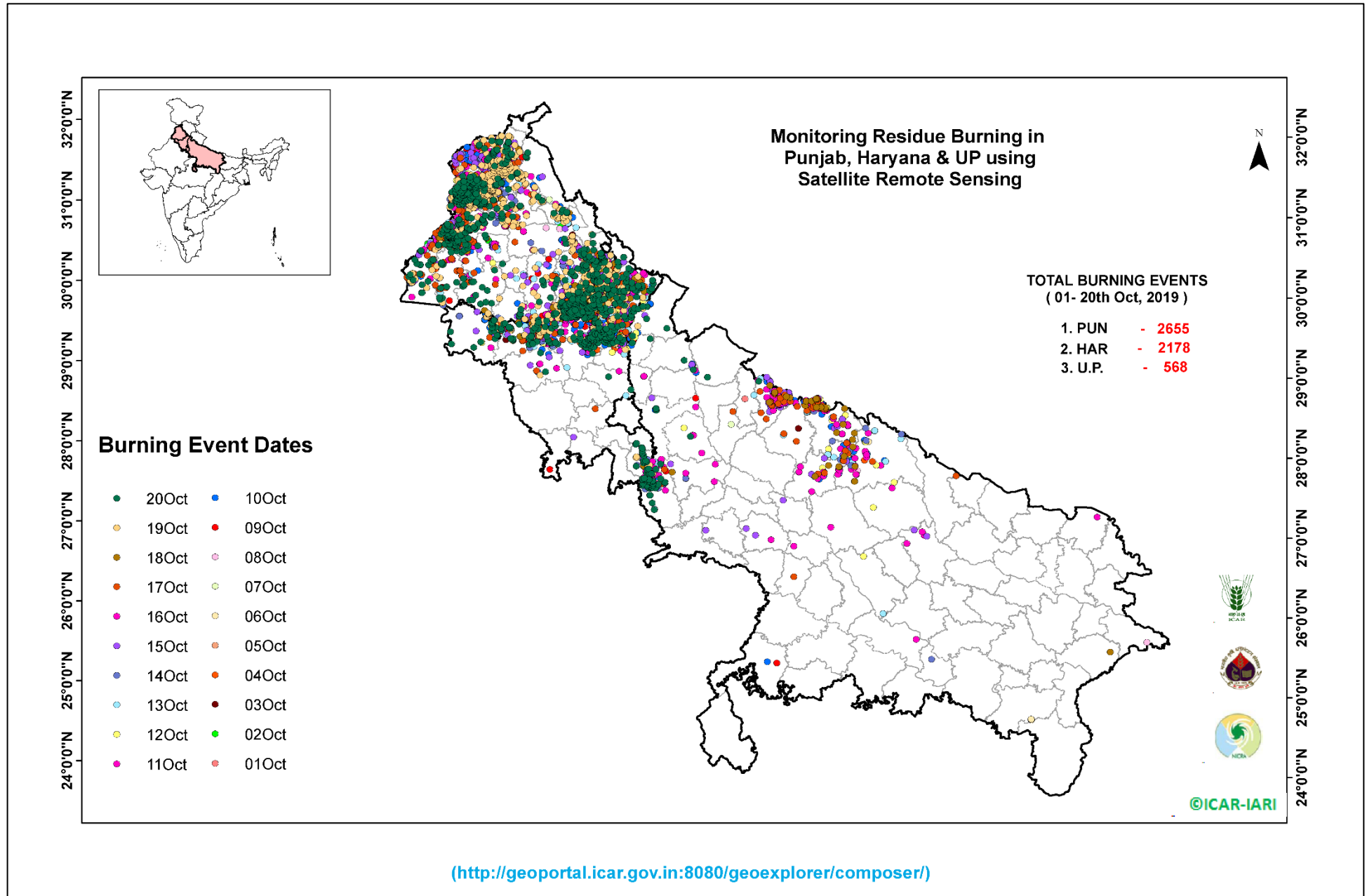
(c) Uttar Pradesh

Districts	01-20 Oct			
	2016	2017	2018	2019
AGRA	0	0	0	0
ALIGARH	10	17	17	21
ALLAHABAD	0	0	3	0
AMBEDKARNAGAR	0	1	0	0
AMETHI	0	0	0	0
AMROHA	0	0	0	0
AURAIYA	50	52	17	1
AZAMGARH	0	0	0	0
BADAUN	0	1	0	0
BAGHPAT	0	0	0	2
BAHRAICH	0	2	6	0
BALLIA	0	0	0	1
BALRAMPUR	0	0	1	0
BANDA	1	0	1	0
BARABANKI	45	30	62	5
BAREILLY	80	64	19	28
BASTI	0	0	0	0
BHADOHI	0	0	0	0
BIJNOR	5	2	1	1
BULANDSAHAR	3	9	7	5
CHANDAULI	0	0	0	0
CHITRAKOOT	0	0	0	0
DEORIA	0	0	0	0
ETAH	0	12	11	0
ETAWAH	3	10	2	0
FAIZABAD	1	1	1	0
FARRUKHABAD	0	0	0	1
FATEHPUR	5	7	10	1
FIROZABAD	3	2	1	1

GAUTAMBUDHNAGAR	4	4	4	0
GAZIPUR	0	0	0	1
GHAZIABAD	8	5	3	6
GONDA	0	0	0	0
GORAKHPUR	0	2	5	0
HAMIRPUR	0	0	1	0
HAPUR	0	0	0	2
HARDOI	16	16	7	1
HATHRAS	0	0	0	0
JALAUN	0	0	0	0
JAUNPUR	1	0	3	0
JHANSI	0	0	2	2
KANNAUJ	0	1	2	1
KANPUR	1	3	0	0
KANPUR DEHAT	0	1	0	0
KASGANJ	0	0	0	0
KAUSHAMBI	0	4	9	1
KHERI	137	119	64	50
KUSHINAGAR	0	1	0	0
LALITPUR	0	0	0	0
LUCKNOW	7	5	0	1
MAHARAJGANJ	3	22	25	1
MAHOBA	0	0	0	0
MAINPURI	0	8	4	3
MATHURA	51	113	220	92
MAU	1	0	2	0
MEERUT	18	11	3	5
MIRZAPUR	0	2	4	3
MORADABAD	11	11	5	2
MUZAFARNAGAR	43	49	18	6
PILHIBHIT	310	298	130	133
PRATAPGARH	0	0	2	0

RAE BARELI	0	0	0	0
RAMPUR	281	274	67	86
SHARANPUR	22	32	13	14
SAMBHAL	0	0	0	2
SANTKABIRNAGAR	0	0	0	0
SHAHJAHANPUR	388	415	104	70
SHAMALI	0	0	0	12
SHRAWASTI	0	3	2	1
SIDDHARTHANAGAR	1	1	1	0
SITAPUR	24	14	9	3
SONBHADRA	5	1	7	0
SULTANPUR	0	0	0	0
UNNAO	3	4	4	3
VARANASI	0	0	0	0
JYOTIBAPHULE NAGAR	1	0	1	0
MAHAMAYANAGAR	0	1	1	0
Total	1542	1630	881	568

Map of Cumulative Burning Events (01 – 20 Oct 2019)



The study used images received from following Satellites at IARI Satellite Ground Station

S. No.	Satellite Name	Sensor	Resolution (meter)	Day / Night Passes
1.	Suomi NPP	VIIRS	375 / 1000	Both
2.	Terra	MODIS	1000	Both
3.	Aqua	MODIS	1000	Both
4.	NOAA – 18	AVHRR	1000	Night
5.	NOAA – 19	AVHRR	1000	Night
6.	Metop - 1	AVHRR	1000	Night
7.	Metop - 2	AVHRR	1000	Night

Study Team

ICAR – HQ	Dr K. Alagusundaram	DDG (AG. ENGG.)	ddgengg@icar.org.in
	Dr S. Bhasker	ADG (NRM)	adgagroandaf@gmail.com
	Dr K.K. Singh	ADG (AG. ENGG)	kanchansingh044@gmail.com
ICAR - IARI	Dr V.K. Sehgal	Professor & Nodal Scientist	iaricreams@gmail.com
	Dr Rajkumar Dhakar	Scientist	raidhakar.iari@gmail.com
	Mr Rakeswer Verma	Chief Technical Officer	rakeshwar.verma@icar.gov.in
	Mr Mohd Jahangir	Lab Assistant (KRISHI)	mjahangir198@gmail.com
ICAR - ATARI	Dr Rajbir Singh	Director ATARI (Zone-I) Ludhiana	rajbirsingh.zpd@gmail.com
	Dr S.K. Singh	Director ATARI (Zone-II) Jodhpur	sushilsinghiipr@yahoo.co.in
	Dr Atar Singh	Director ATARI (Zone-III) Kanpur	zpdicarkanpur@gmail.com
ICAR - IASRI	Dr Rajender Parsad	Principal Scientist	rajender.parsad@icar.gov.in

GIS Maps of fire events can be visualized online on ICAR KRISHI Geoportal website: <http://geoportal.icar.gov.in:8080/geoexplorer/composer/>
(Part of KRISHI Portal: <https://krishi.icar.gov.in> initiative)
