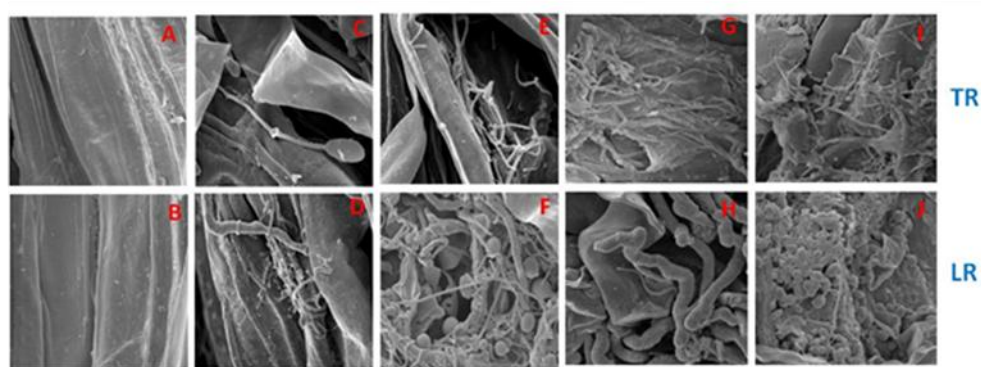


A & B Untreated castor roots (35 day old)  
C & D Th4d treated castor roots

**Fig.1.** WGA –FITC staining demonstrated penetration and colonization of castor roots by *Trichoderma*

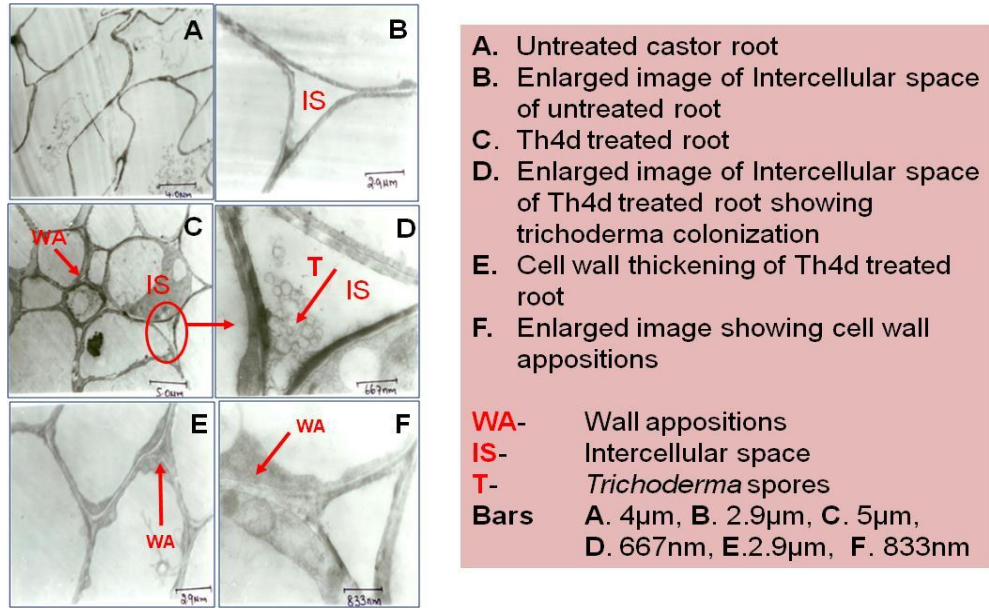


A&B Epidermal cells of Untreated roots (3000X)  
C&D Epidermal cells of Th4D treated roots. 6 h after treatment (3000X)  
E&F 12 h, G&H 24 h I&J 48 h after treatment

TR - Tap Root

LR - Lateral root

**Fig.2.** Scanning electron micrographs of Th4d-treated and untreated castor roots showing the entry points of *Trichoderma* into the roots



**Fig.3. Transmission electron microscopy showing *Trichoderma* in the interstitial spaces of root epidermal cells**