

Fig.4. Schematic representation of the molecular approaches used in the present research work.

De novo Whole Transcriptome

Castor whole transcriptome – Statistics

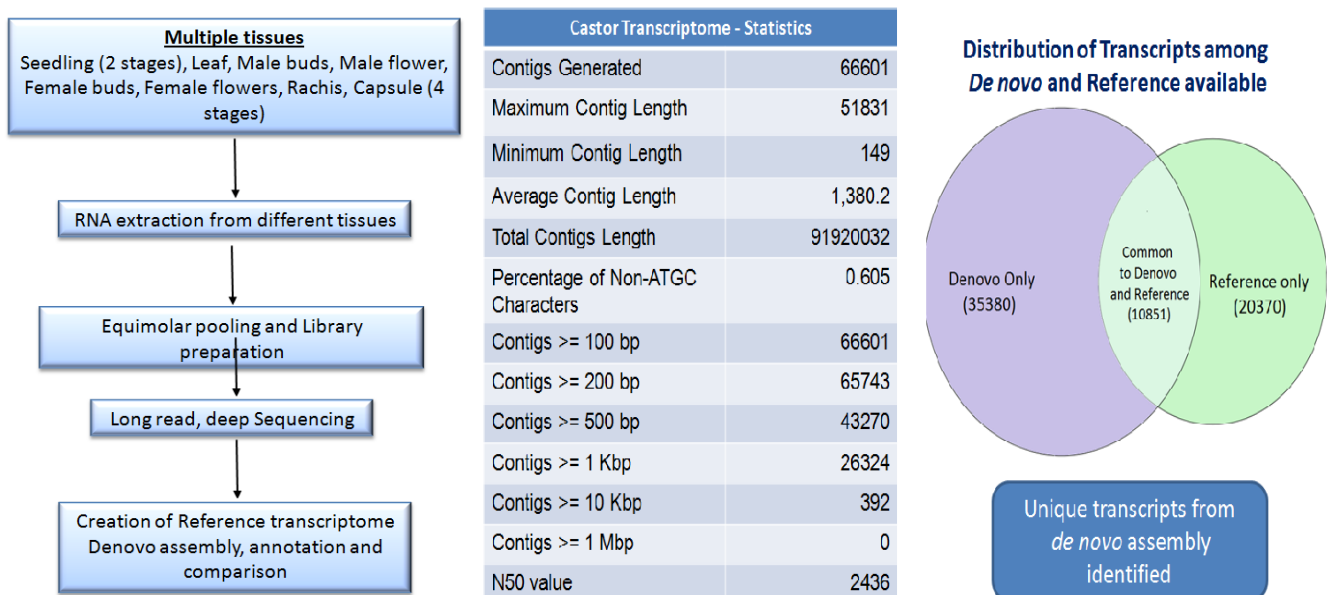


Fig.5. Schematic representation of the various steps followed for the creation of reference transcriptome de novo assembly

Differential genes ISR Prime v/s ISR Boost (Common and Unique)

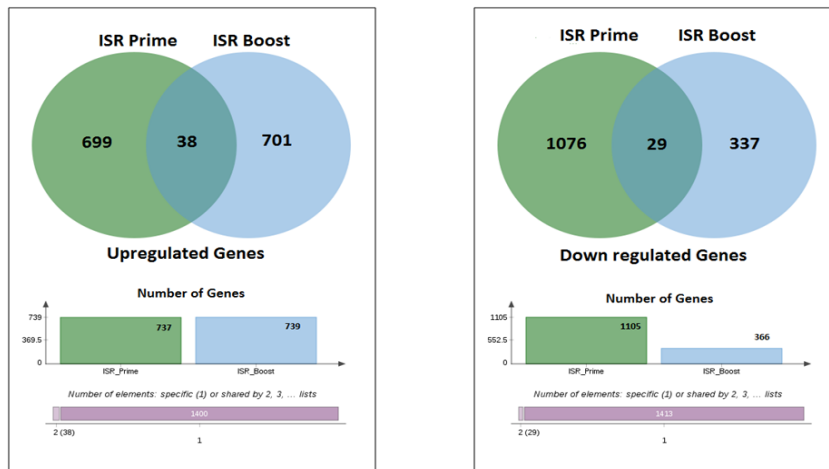


Fig.6. Venn diagrams showing the differentially expressing genes during ISR prime and ISR-boost

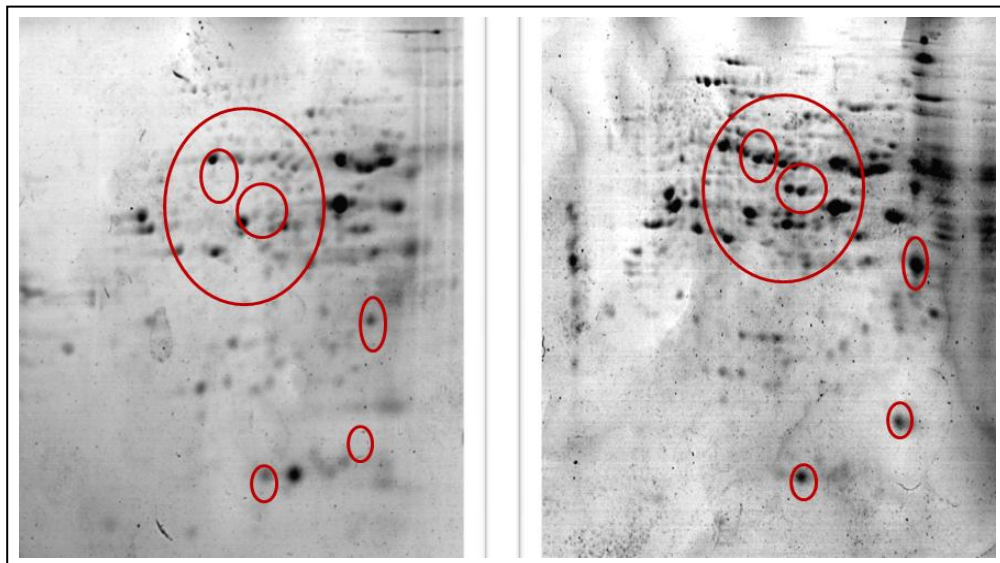


Fig.7. 2D-gel electrophoresis of proteins isolated from leaves of *Trichoderma* treated and untreated seedlings

LC-MS Analysis of n-Butanol Extracts

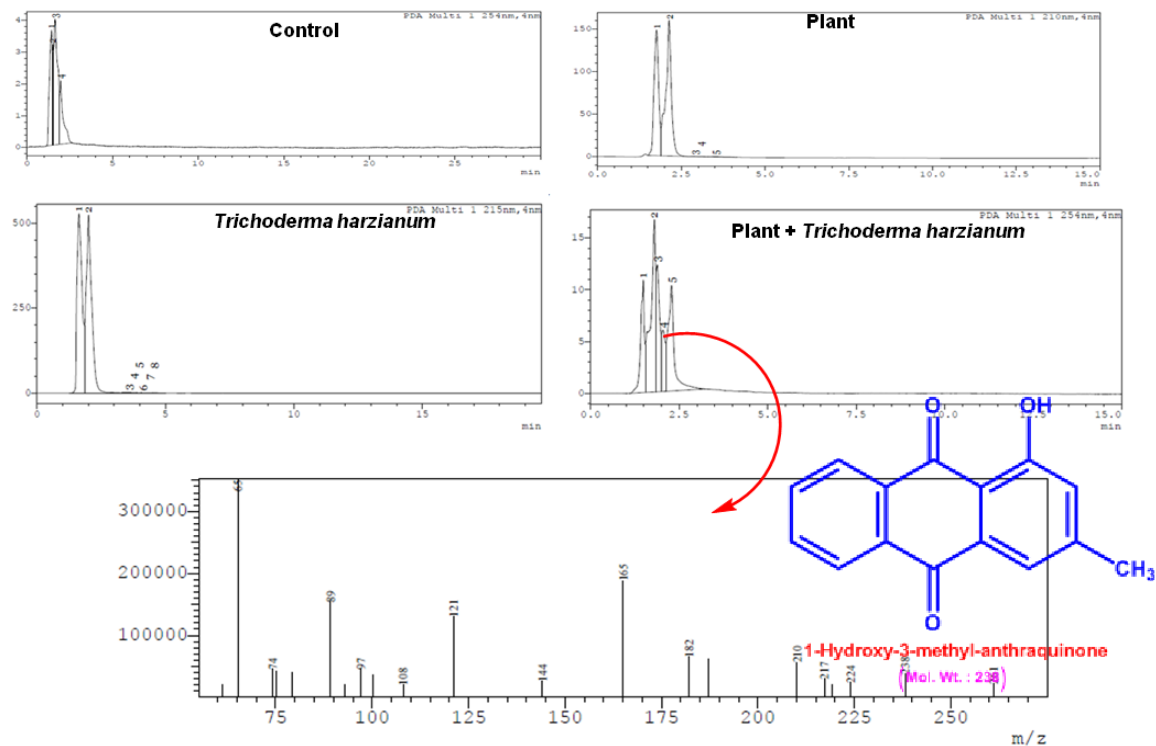


Fig.8. LC-MS profile indicating the various biomolecules present in *Trichoderma*-treated castor culture medium