

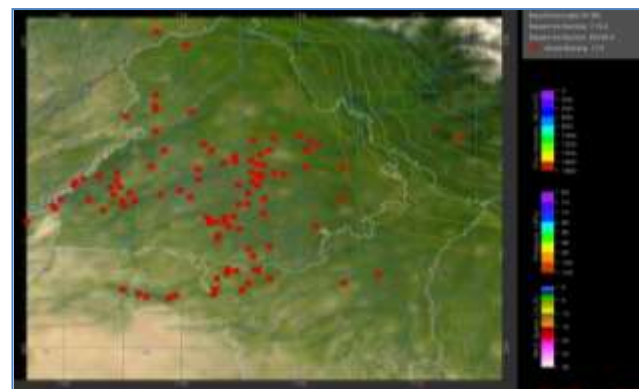


MONITORING PADDY RESIDUE BURNING IN NORTH INDIA USING SATELLITE REMOTE SENSING DURING 2020

**Bulletin
No. 13**

**Events Date:
13-Oct-2020**

**Issued on:
14-Oct-2020**



Prepared by:

**Consortium for Research on Agroecosystem Monitoring and Modeling from Space (CREAMS) Laboratory,
Division of Agricultural Physics, ICAR – Indian Agricultural Research Institute, New Delhi – 110012**

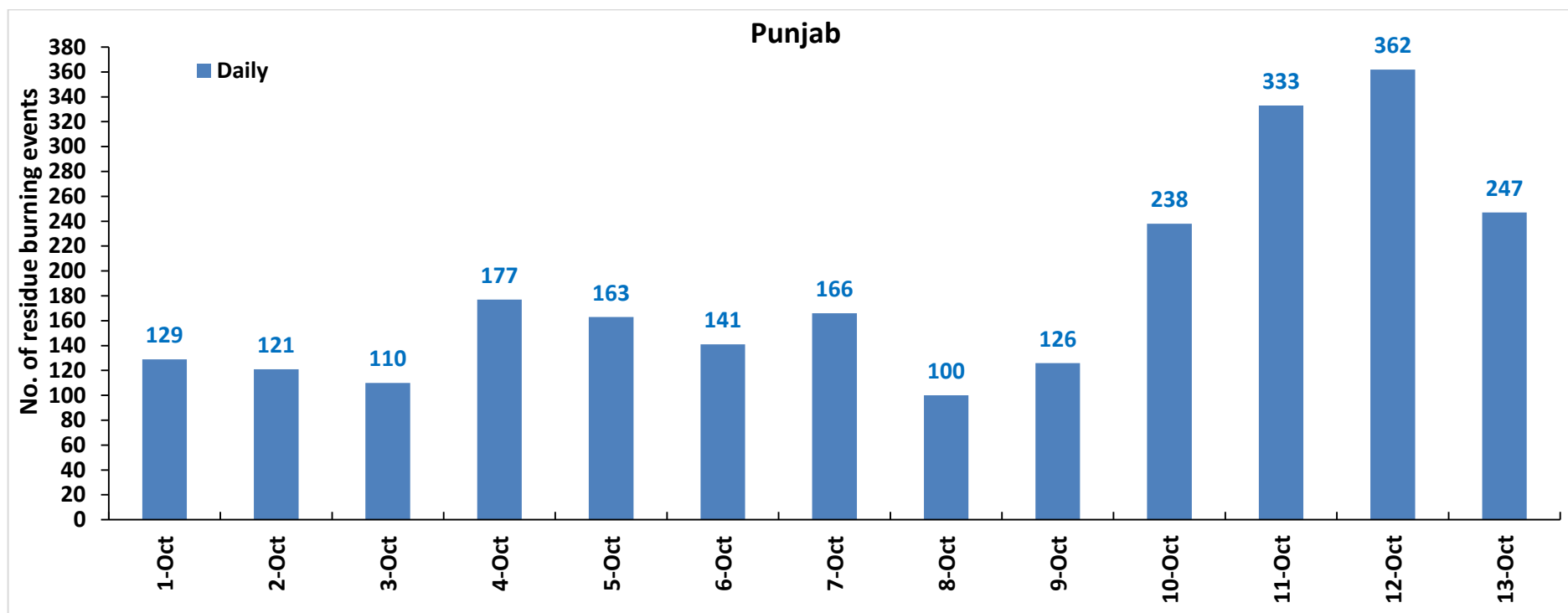
<http://creams.iari.res.in>



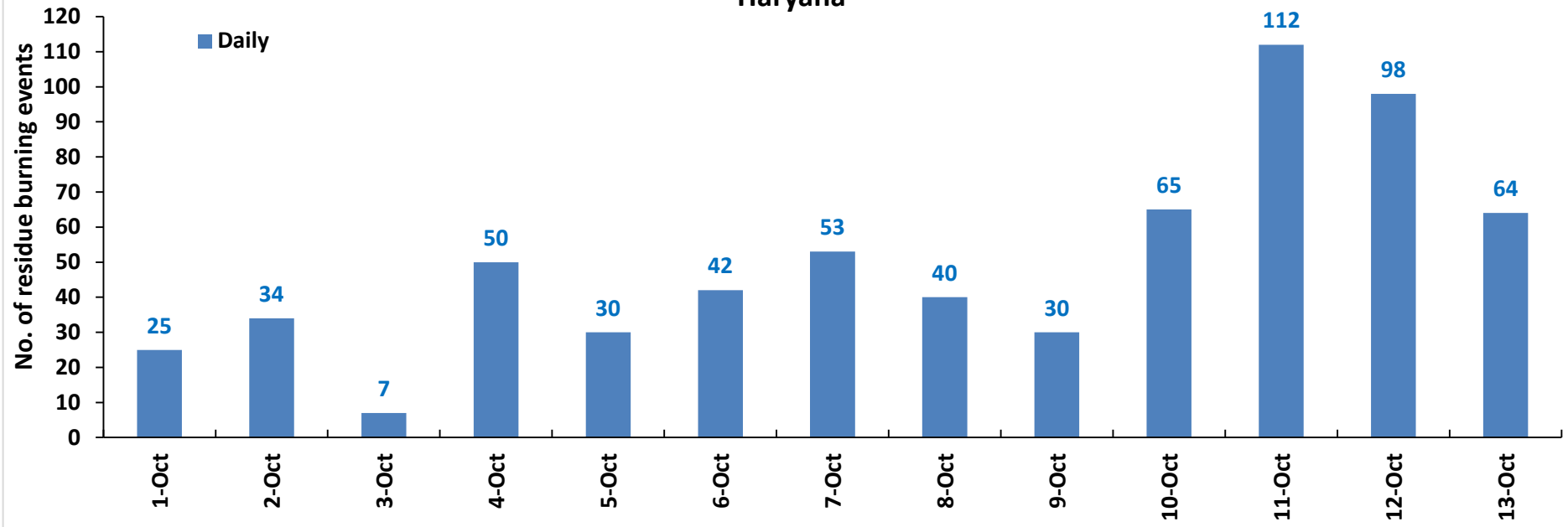
Highlights for 13-October-2020

- Satellites detected **350** residue burning events in the three study States on 13-Oct-2020.
- The state wise events detected on **13-Oct-2020** were **247** in Punjab, **64** in Haryana and **39** in UP.
- The number of events has decreased from **497** on **12-Oct-2020** to **350** on **13-Oct-2020** in the three states.
- Total **3304** burning events were detected in the three States between **01-Oct-2020** and **13-Oct-2020**, which are distributed as **2413**, **650** and **241** in Punjab, Haryana and UP, respectively.
- Amritsar, Tarn Taran and Patiala in Punjab; Kurukshetra, Karnal and Ambala in Haryana; and Shahjhanpur, Kheri and Aligarh in UP were the top three districts with burning events during **1-Oct to 13-Oct 2020**
- In Punjab and UP, the cumulative number of burning events between **1-Oct** and **13-Oct 2020** were higher than in **2019**.

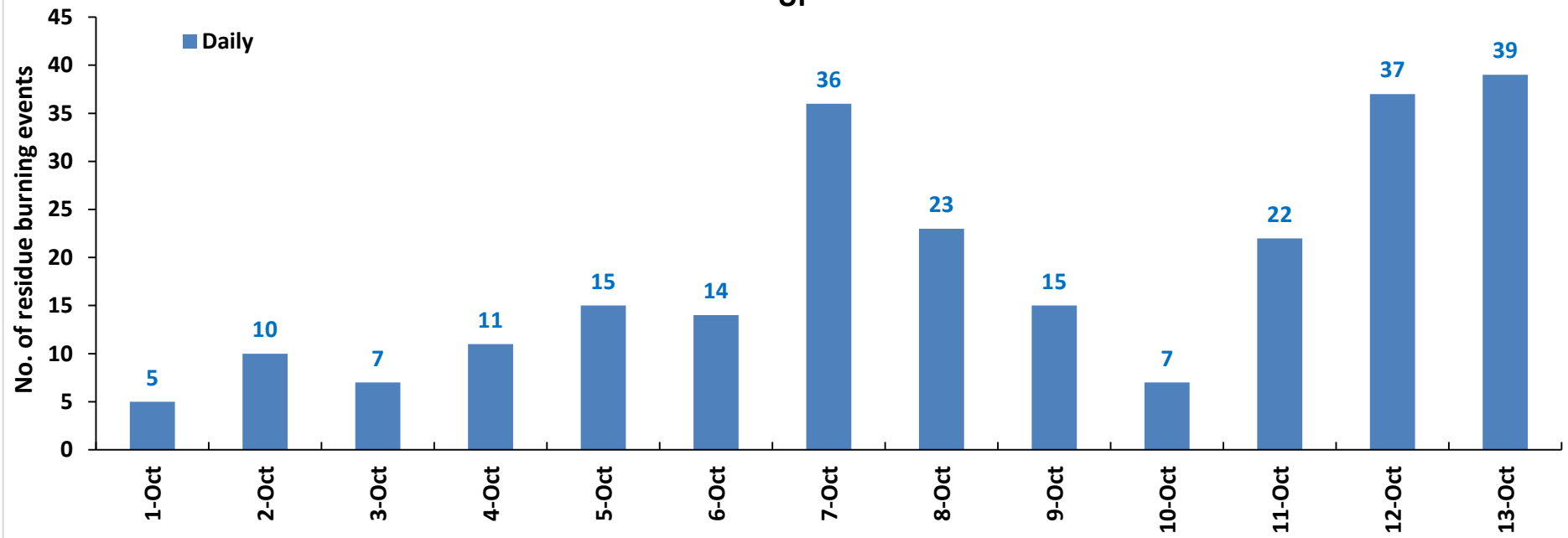
Temporal distribution of residue burning events for the three study States in 2020



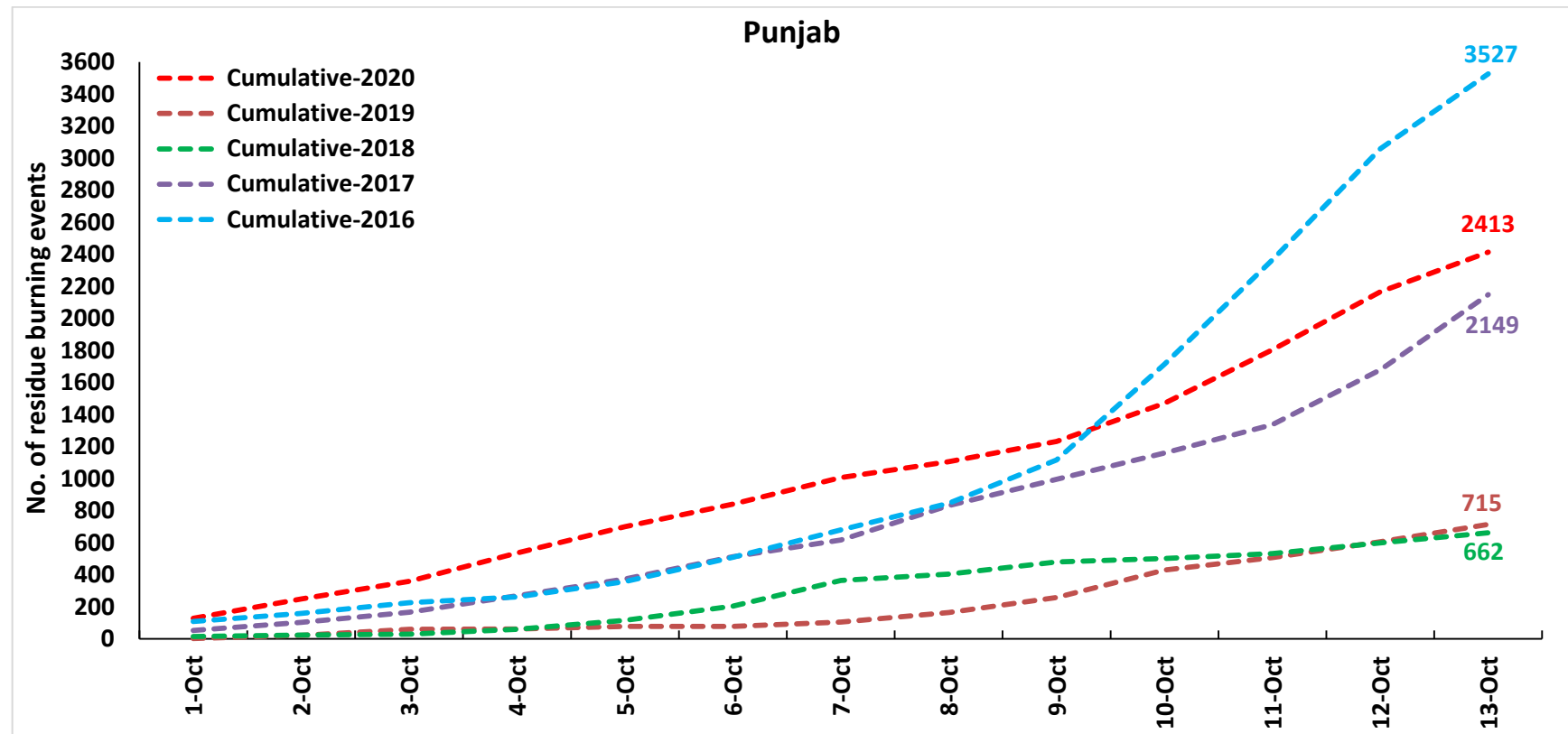
Haryana

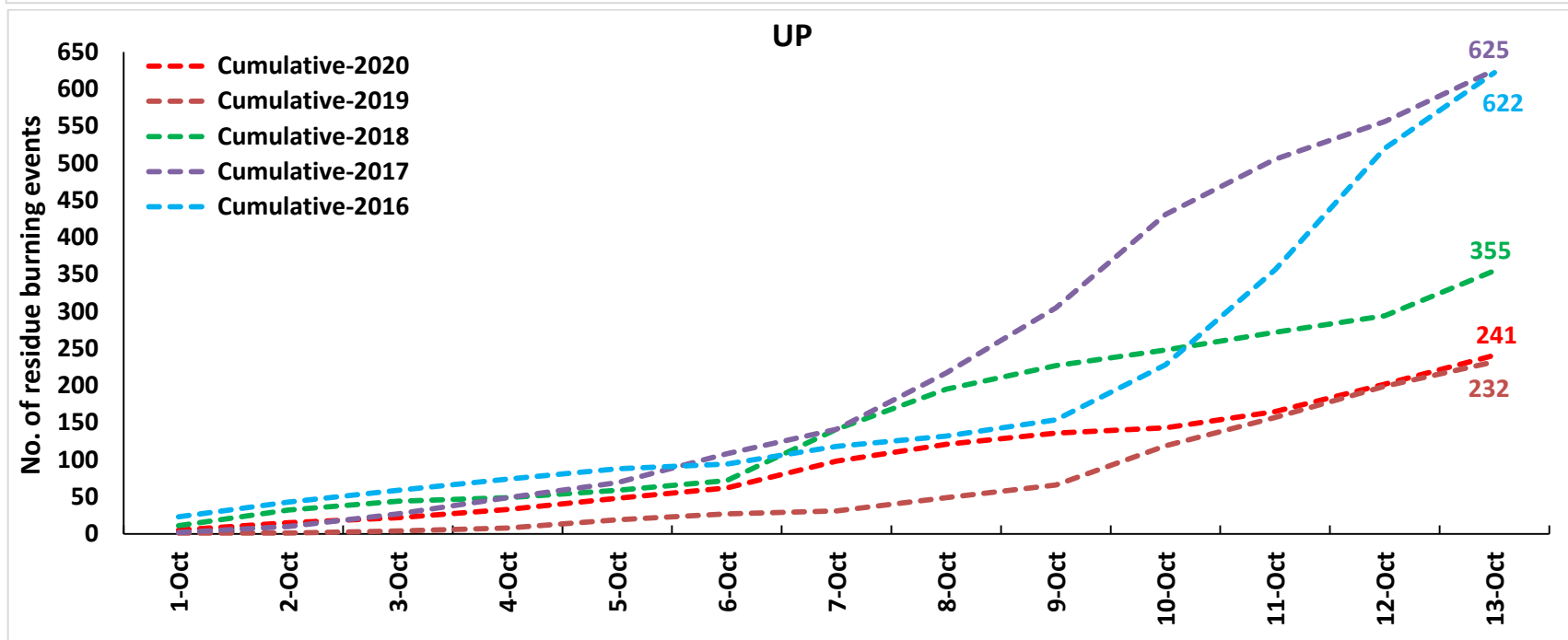
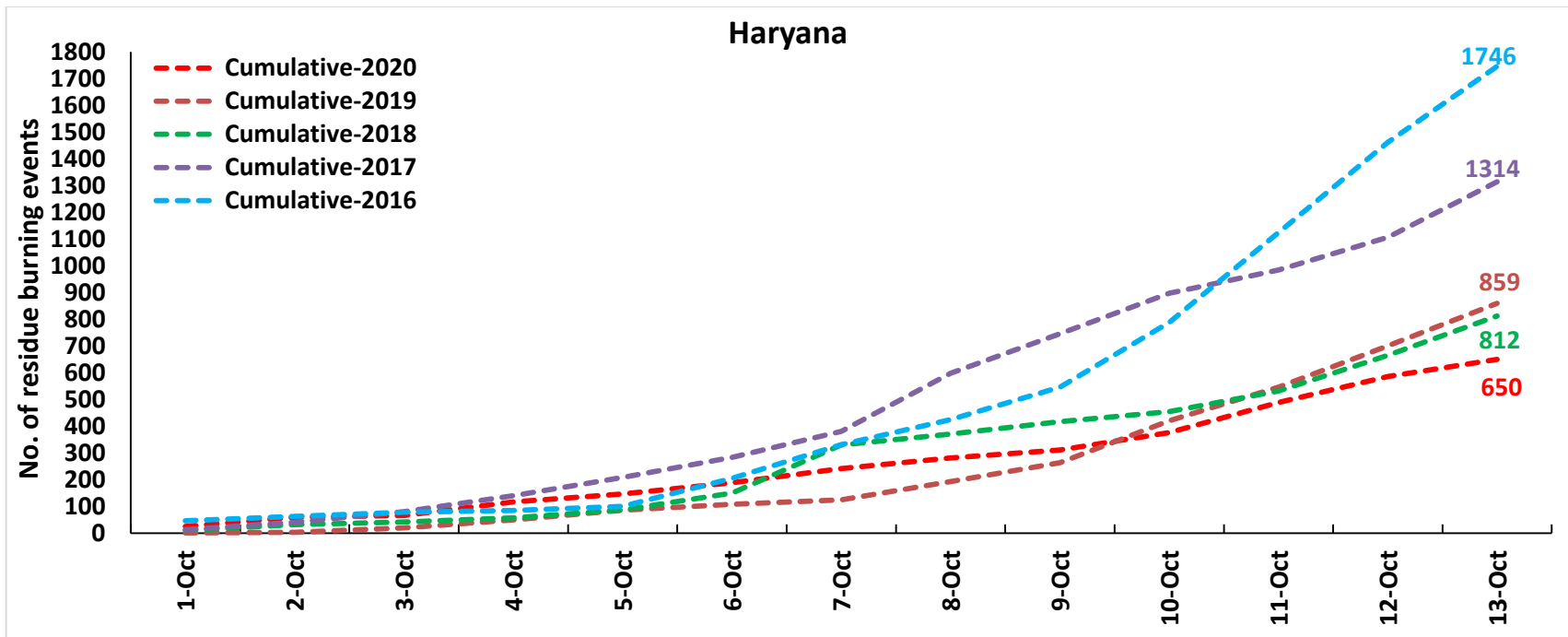


UP

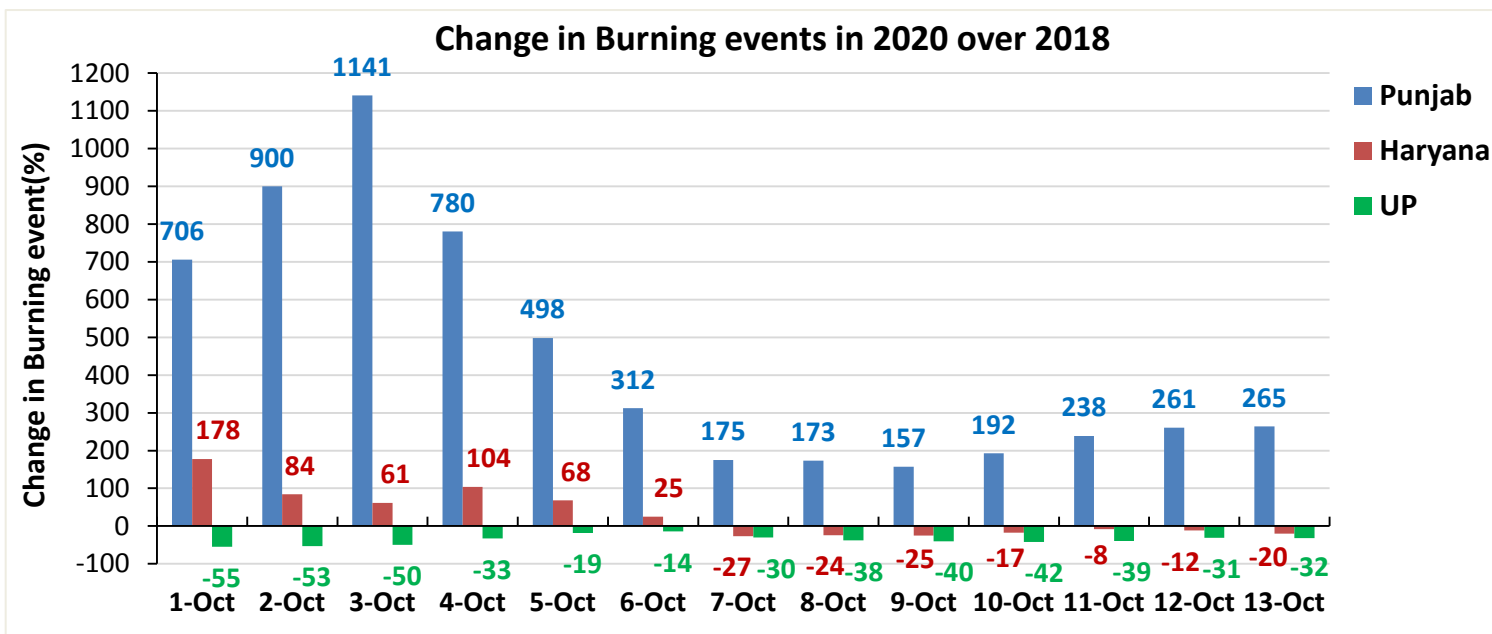
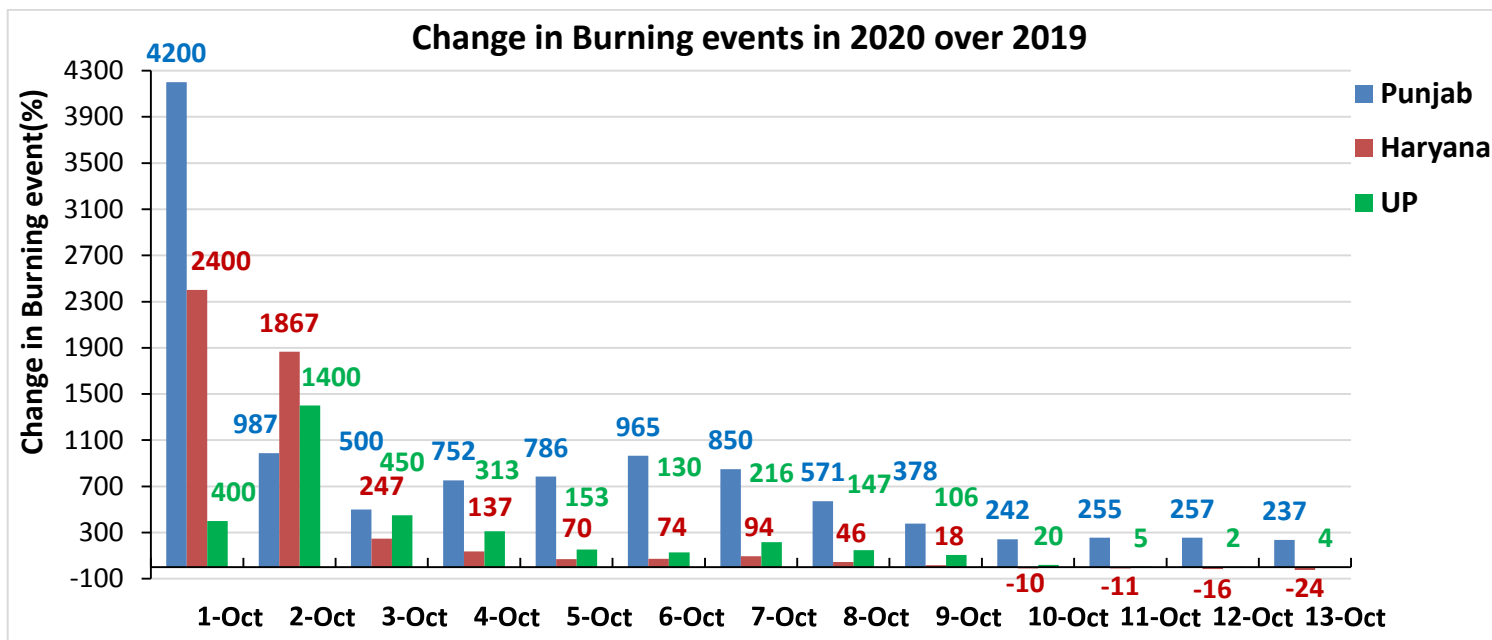


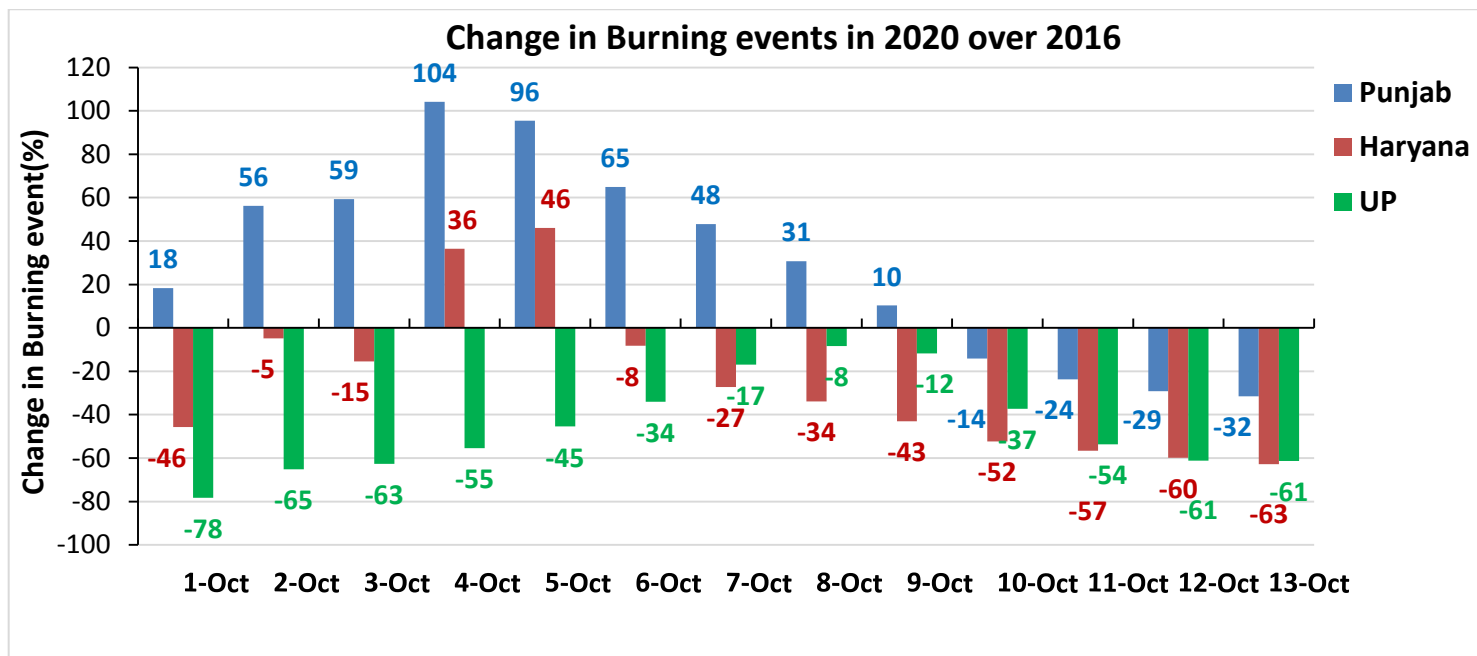
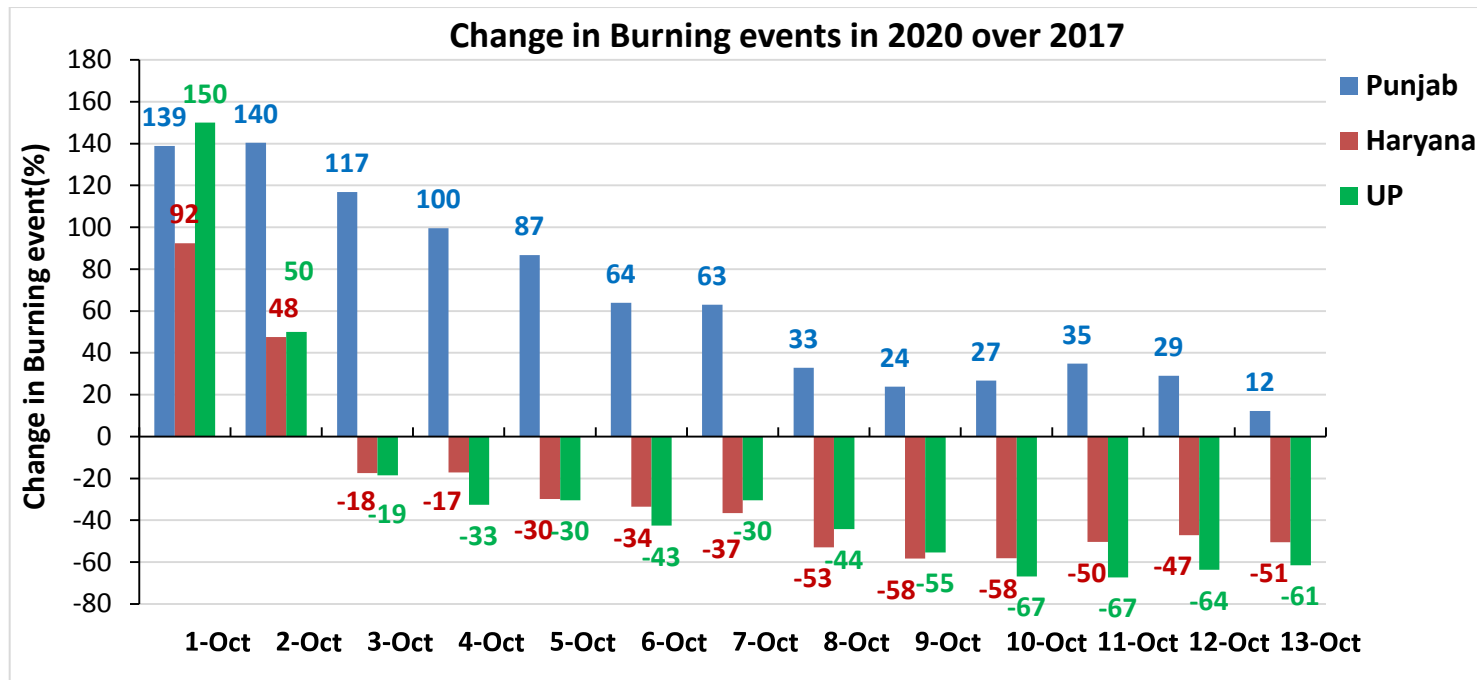
Comparison of residue burning events in current year (2020) with previous years (2019, 2018, 2017 & 2016) for the three study States
(01-Oct to 13-Oct)



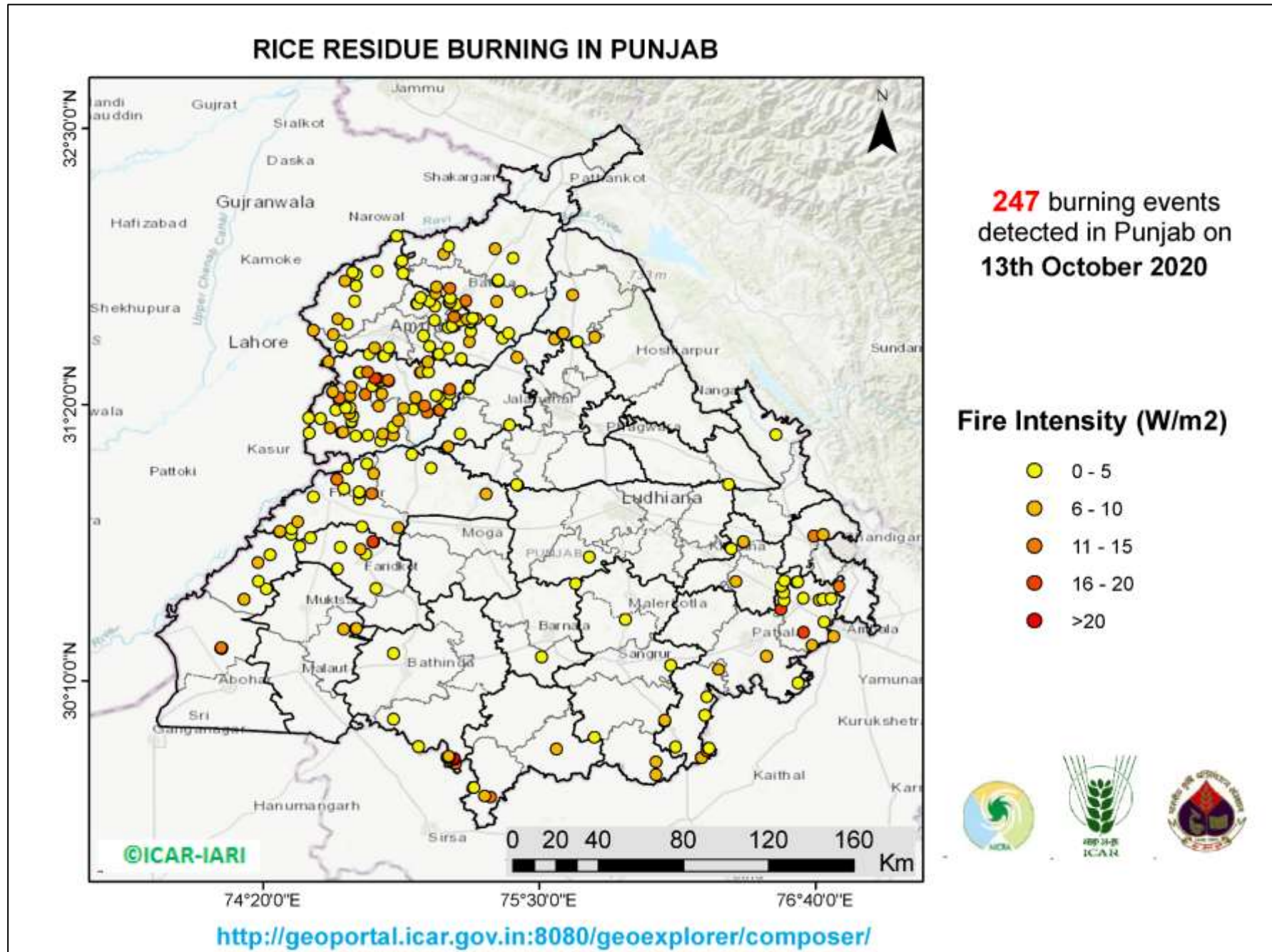


Percent Change in Burning events in 2020 over 2019, 2018, 2017 and 2016 (Daily Cumulative)

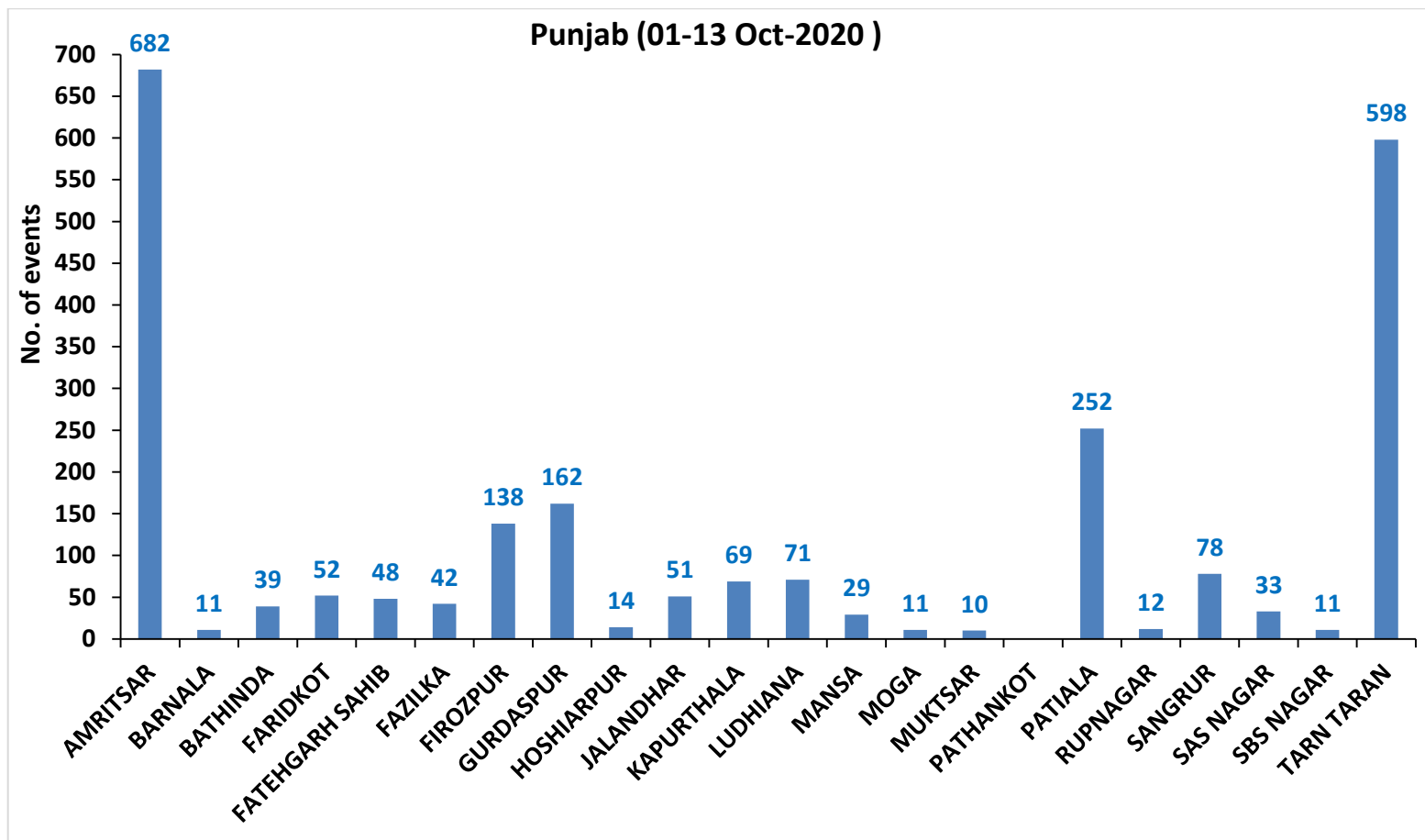




(a) Punjab

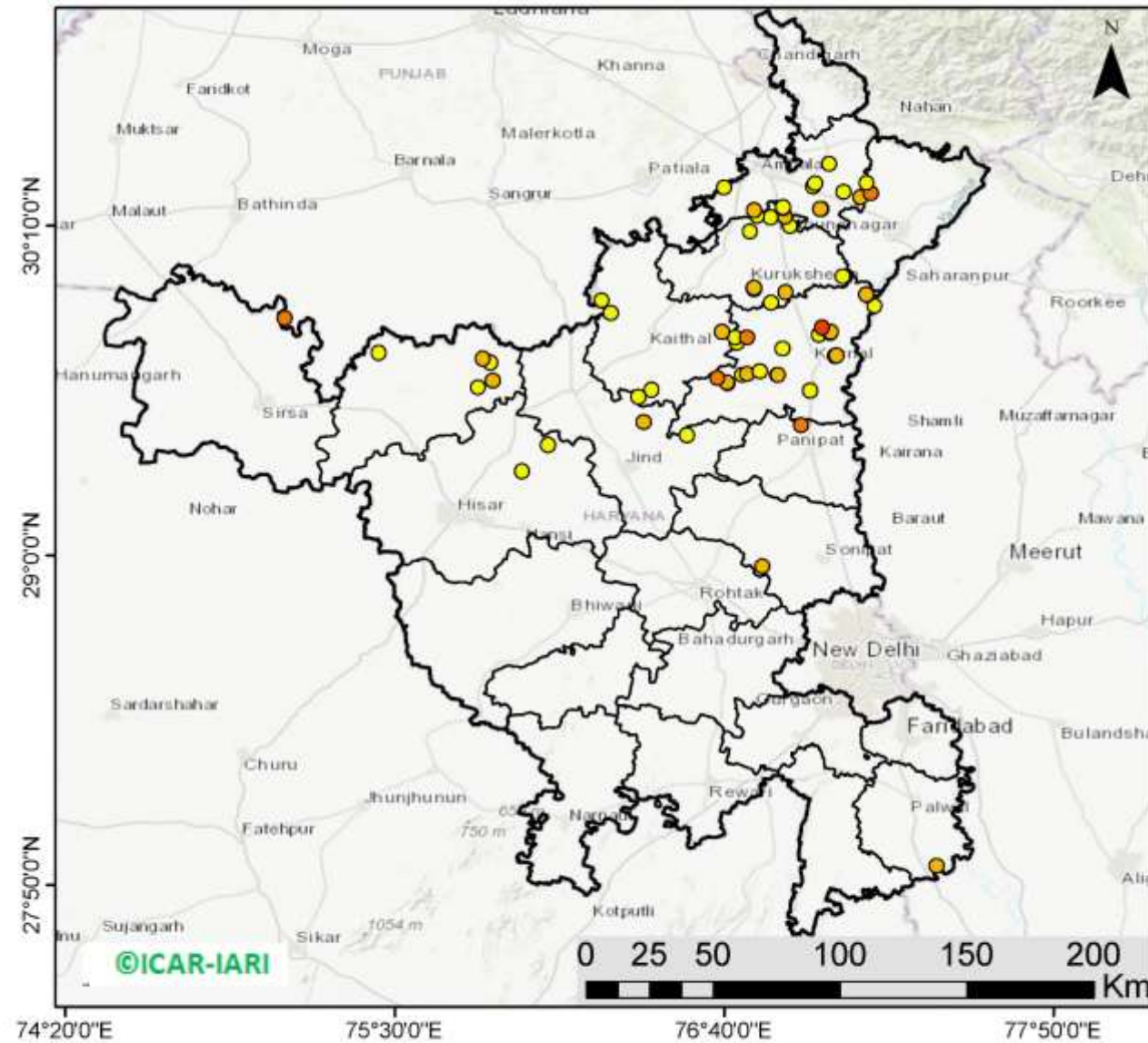


District-wise cumulative number of residue burning events in Punjab (01-13 Oct-2020)



(b) Haryana

RICE RESIDUE BURNING IN HARYANA



64 burning events detected in Haryana on 13th October 2020

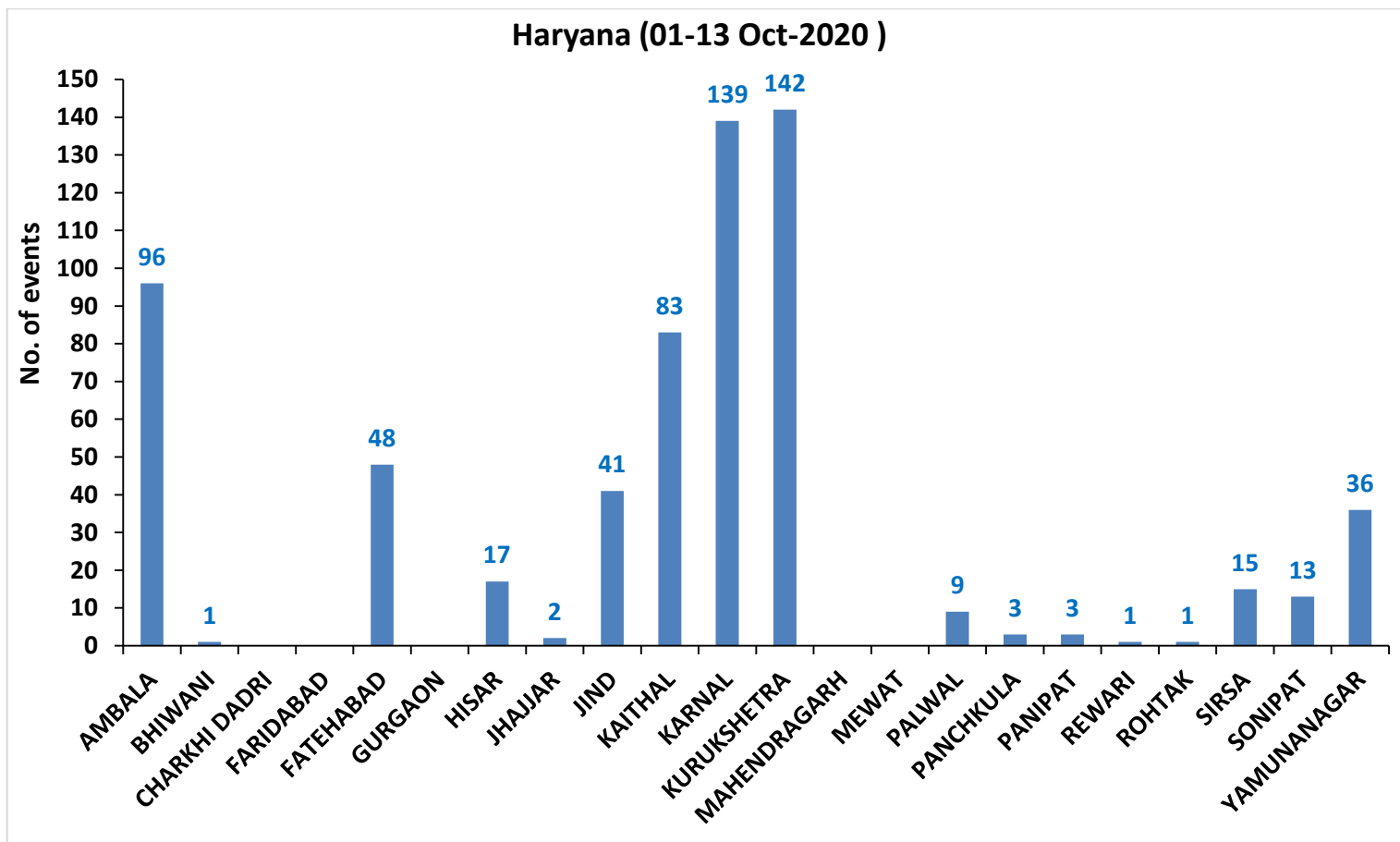
Fire Intensity (W/m²)

- 0 - 5
- 6 - 10
- 11 - 15
- 16 - 20
- >20



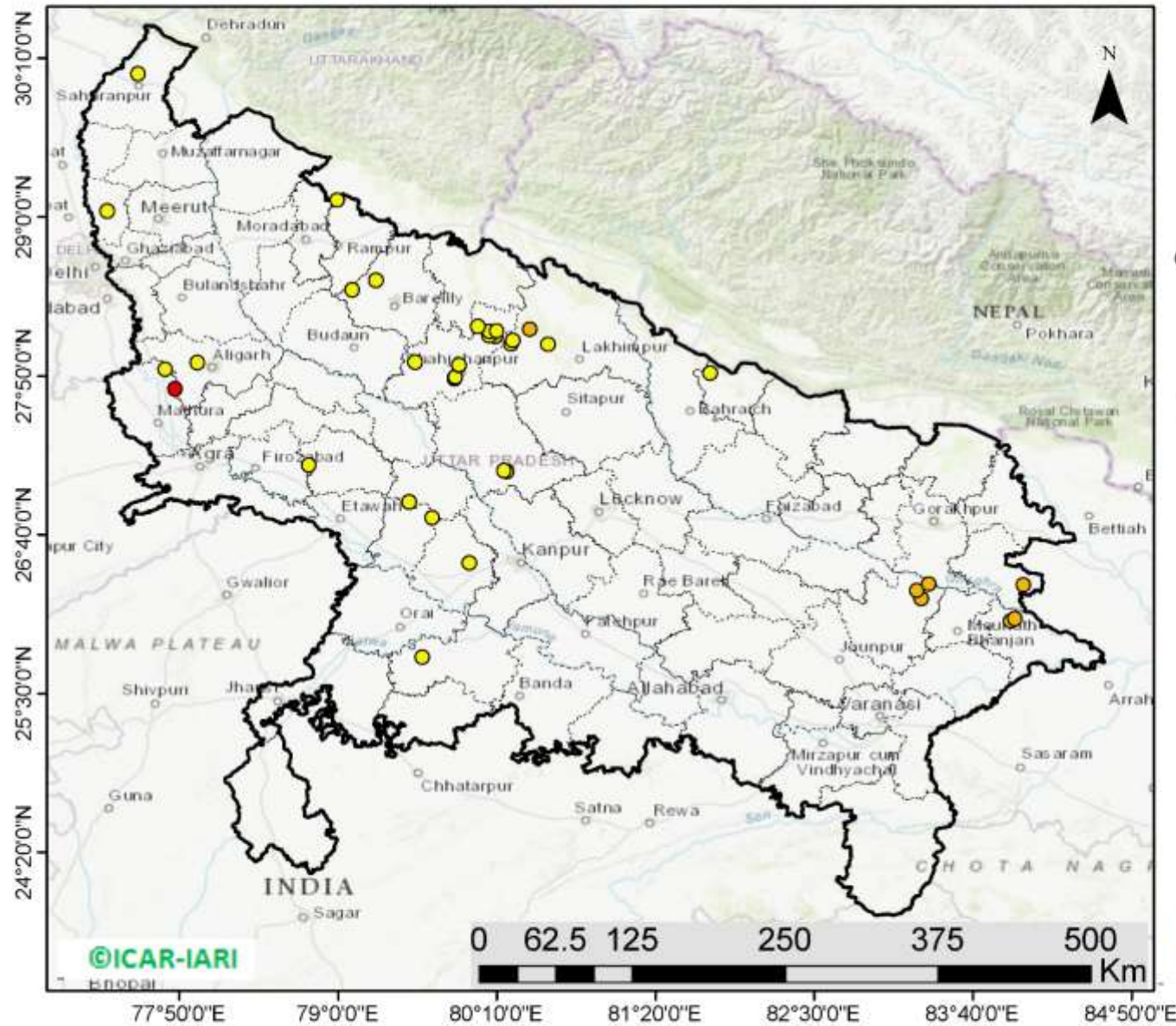
<http://geoportal.icar.gov.in:8080/geoexplorer/composer/>

District-wise cumulative number of residue burning events in Haryana (01-13 Oct-2020)



(c) Uttar Pradesh

RICE RESIDUE BURNING IN UTTAR PRADESH



39 burning events detected in Uttar Pradesh on 13th October 2020

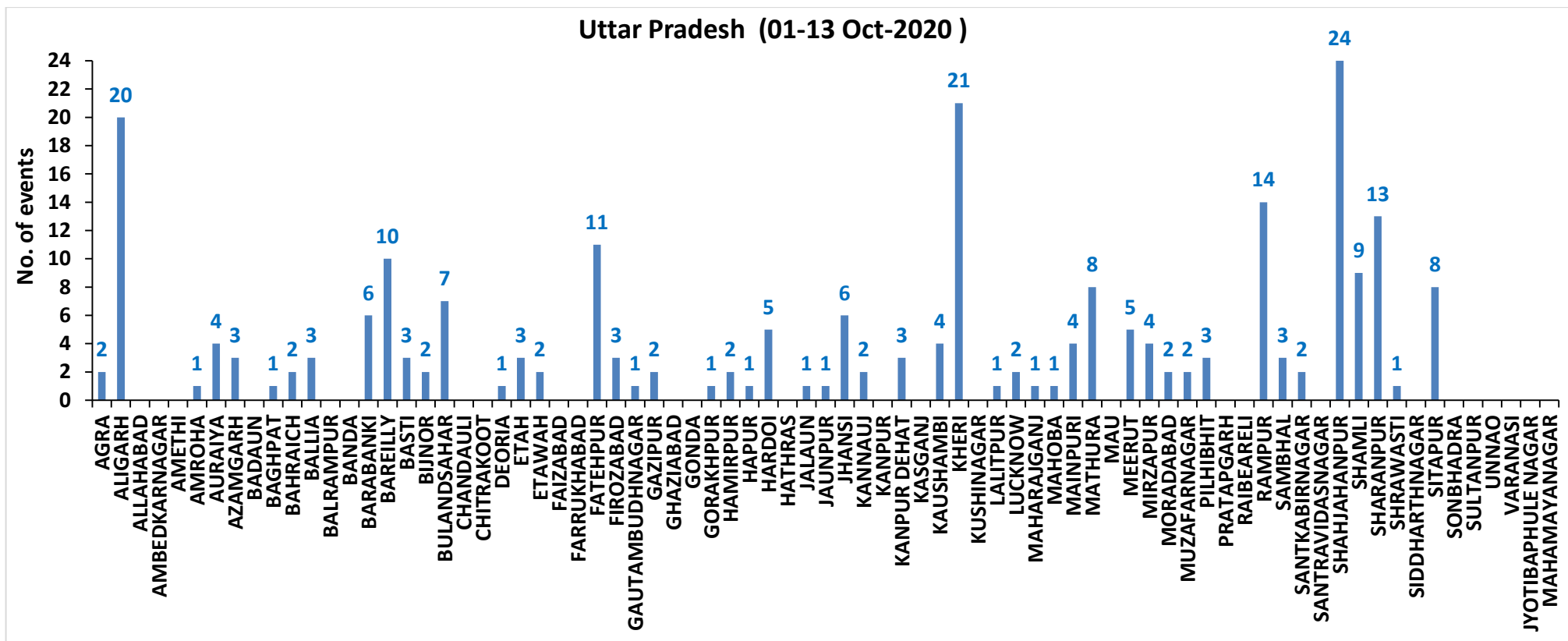
Fire Intensity (W/m²)

- 0 - 5
- 6 - 10
- 11 - 15
- 16 - 20
- >20



<http://geoportal.icar.gov.in:8080/geoexplorer/composer/>

District-wise cumulative number of residue burning events in Uttar Pradesh (01-13 Oct-2020)



State-wise and date-wise number of residue burning events detected in 2016, 2017, 2018, 2019 and 2020
(Period: 01-13 October)

Date	Punjab					Haryana					UP					Total				
	2020	2019	2018	2017	2016	2020	2019	2018	2017	2016	2020	2019	2018	2017	2016	2020	2019	2018	2017	2016
01-Oct	129	3	16	54	109	25	1	9	13	46	5	1	11	2	23	159	5	36	69	178
02-Oct	121	20	9	50	51	34	2	23	27	16	10	0	21	8	20	165	22	53	85	87
03-Oct	110	37	4	62	66	07	16	9	40	16	07	3	12	17	16	124	56	25	119	98
04-Oct	177	3	32	103	37	50	30	16	60	7	11	4	5	22	15	238	37	53	185	59
05-Oct	163	16	56	106	95	30	37	30	68	15	15	11	10	20	14	208	64	96	194	124
06-Oct	141	0	87	138	152	42	22	63	75	105	14	8	13	39	6	197	30	163	252	263
07-Oct	166	27	162	105	171	53	16	180	97	126	36	4	69	33	24	255	47	411	235	321
08-Oct	100	59	39	215	166	40	69	40	218	94	23	18	54	76	14	163	146	133	509	274
09-Oct	126	93	75	163	270	30	70	47	148	121	15	17	32	88	22	171	180	154	399	413
10-Oct	238	172	23	164	597	65	157	37	151	242	07	53	21	126	74	310	382	81	441	913
11-Oct	333	78	30	177	652	112	126	78	87	336	22	38	24	74	128	467	242	132	338	1116
12-Oct	362	99	67	342	694	98	154	133	123	338	37	42	22	51	164	497	295	222	516	1196
13-Oct	247	108	62	470	467	64	159	147	207	284	39	33	61	69	102	350	300	270	746	853
Total	2413	715	662	2149	3527	650	859	812	1314	1746	241	232	355	625	622	3304	1806	1829	4088	5895

District-wise and date wise cumulative number of residue burning events detected in 2016, 2017, 2018, 2019 and 2020
(Period: 01-13 October)

(a) Punjab

Districts	01-13 Oct				
	2016	2017	2018	2019	2020
AMRITSAR	609	379	315	244	682
BARNALA	11	6	1	2	11
BATHINDA	172	98	12	4	39
FARIDKOT	227	305	5	13	52
FATEHGARH SAHIB	213	70	11	6	48
FAZILKA	0	0	0	14	42
FIROZPUR	265	245	33	30	138
GURDASPUR	147	48	26	22	162
HOSHIARPUR	31	5	3	6	14
JALANDHAR	227	89	1	28	51
KAPURTHALA	187	29	2	20	69
LUDHIANA	162	128	22	7	71
MANSA	17	33	4	15	29
MOGA	53	27	0	10	11
MUKTSAR	226	37	3	6	10
PATHANKOT	0	0	0	0	0
PATIALA	304	250	65	90	252
RUPNAGAR	31	3	0	1	12
SANGRUR	56	93	34	30	78
SAS NAGAR	29	32	20	9	33
SBS NAGAR	40	21	8	15	11
TARN TARAN	520	251	97	143	598
Total	3527	2149	662	715	2413

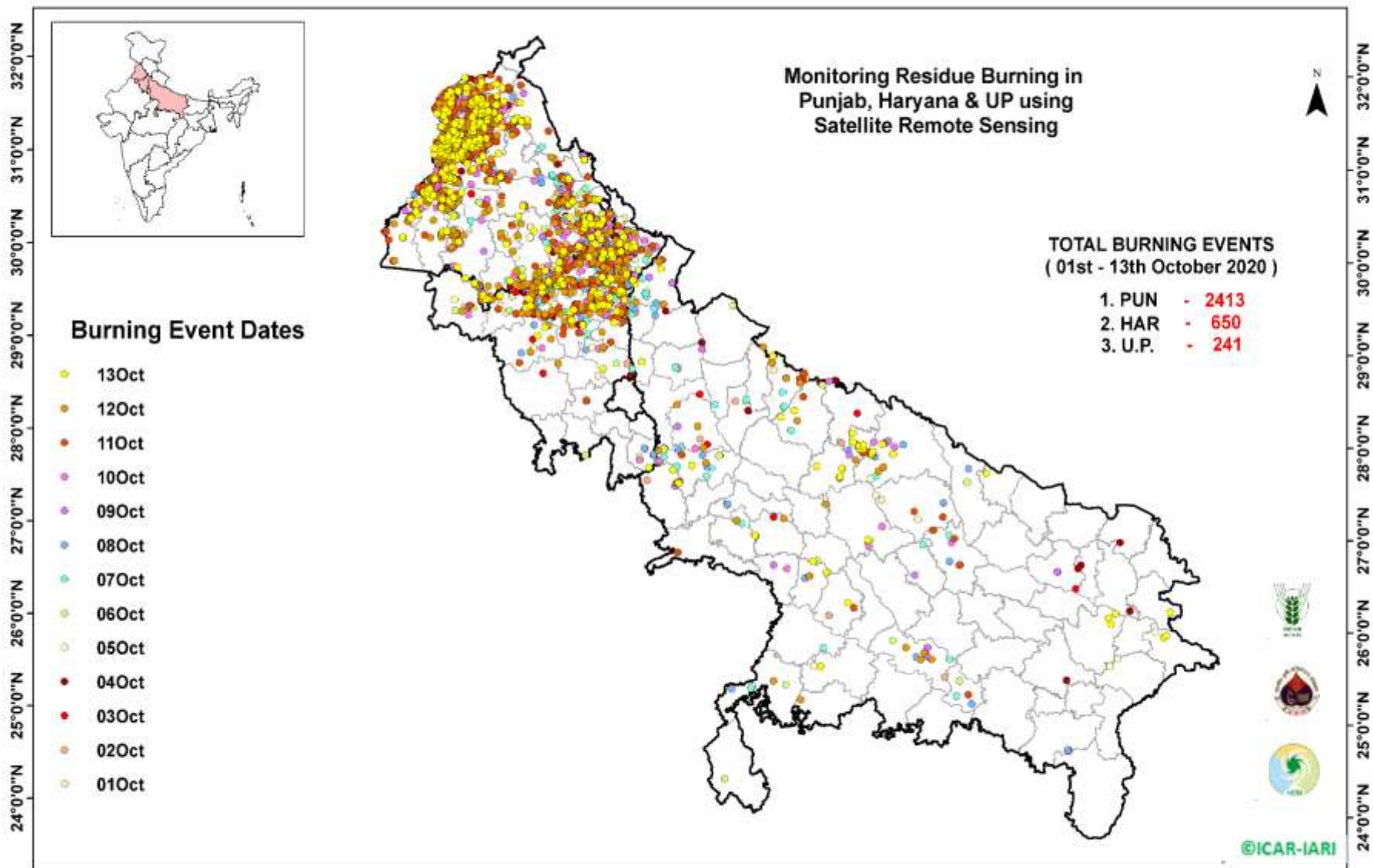
(b) Haryana

Districts	01-13 Oct				
	2016	2017	2018	2019	2020
AMBALA	107	98	38	29	96
BHIWANI	0	2	2	0	1
CHARKHI DADRI	0	0	0	0	0
FARIDABAD	4	13	23	1	0
FATEHABAD	51	52	25	49	48
GURGAON	0	0	0	0	0
HISAR	13	12	8	12	17
JHAJJAR	4	0	3	1	2
JIND	37	65	38	36	41
KAITHAL	479	277	174	198	83
KARNAL	617	435	264	279	139
KURUKSHETRA	351	285	169	197	142
MAHENDRAGARH	0	0	0	1	0
MEWAT	0	0	0	0	0
PALWAL	0	0	0	10	9
PANCHKULA	0	0	3	5	3
PANIPAT	15	20	30	6	3
REWARI	0	0	0	0	1
ROHTAK	1	1	0	0	1
SIRSA	29	12	7	6	15
SONIPAT	3	8	8	1	13
YAMUNANAGAR	35	34	20	28	36
Total	1746	1314	812	859	650

(C)
Uttar Pradesh

Districts	01-13 Oct																
	2016	2017	2018	2019	2020	GAUTAMBUDHNAGAR	0	0	0	0	1	MUZAFARNAGAR	1	3	1	2	2
AGRA	0	0	0	0	2	GAZIPUR	1	0	2	0	2	PILHIBHIT	12	28	10	4	3
ALIGARH	0	8	8	10	20	GHAZIABAD	0	0	0	0	0	PRATAPGARH	105	100	43	60	0
ALLAHABAD	0	0	3	0	0	GONDA	5	1	2	1	0	RAIBEARELI	0	0	0	0	0
AMBEDKARNAGAR	0	1	0	0	0	GORAKHPUR	0	0	0	0	1	RAMPUR	0	0	0	0	14
AMETHI	0	0	0	0	0	HAMIRPUR	0	2	3	0	2	SAMBHAL	136	87	31	19	3
AMROHA	0	0	0	0	1	HAPUR	0	0	1	0	1	SANTKABIRNAGAR	9	9	7	4	2
AURAIYA	34	31	14	0	4	HARDOI	0	0	0	2	5	SANTRAVIDASNAGAR	0	0	0	1	0
AZAMGARH	0	0	0	0	3	HATHRAS	5	2	2	0	0	SHAHJAHANPUR	0	0	0	0	24
BADAUN	0	0	0	0	0	JALAUN	0	0	0	0	1	SHAMLI	179	217	74	32	9
BAGHPAT	0	0	0	2	1	JAUNPUR	0	0	0	0	1	SHARANPUR	0	0	0	8	13
BAHRAICH	0	0	2	0	2	JHANSI	0	0	2	0	6	SHRAWASTI	0	0	0	0	1
BALLIA	0	0	0	1	3	KANNAUJ	0	0	0	2	2	SIDDHARTHANAGAR	1	0	0	0	0
BALRAMPUR	0	0	0	0	0	KANPUR	0	0	1	0	0	SITAPUR	12	4	3	2	8
BANDA	0	0	1	0	0	KANPUR DEHAT	0	0	0	0	3	SONBHADRA	3	1	4	0	0
BARABANKI	10	13	33	1	6	KASGANJ	0	1	0	0	0	SULTANPUR	0	0	0	0	0
BAREILLY	32	16	7	11	10	KAUSHAMBI	0	0	0	0	4	UNNAO	3	0	1	3	0
BASTI	0	0	0	0	3	KHERI	0	2	6	0	21	VARANASI	0	0	0	0	0
BIJNOR	0	0	0	0	2	KUSHINAGAR	57	62	24	34	0	JYOTIBAPHULE NAGAR	0	0	1	0	0
BULANDSAHAR	1	0	1	0	7	LALITPUR	0	1	0	0	1	MAHAMAYANAGAR	0	0	1	0	0
CHANDAULI	0	2	4	3	0	LUCKNOW	0	0	0	0	2	Total	622	625	355	232	241
CHITRAKOOT	0	0	0	0	0	MAHARAJGANJ	2	4	0	1	1						
DEORIA	0	0	0	0	1	MAHOBA	0	1	3	0	1						
ETAH	0	0	0	0	3	MAINPURI	0	0	0	0	4						
ETAWAH	0	1	6	0	2	MATHURA	0	2	4	1	8						
FAIZABAD	0	2	1	0	0	MAU	8	15	46	21	0						
FARRUKHABAD	0	1	0	0	0	MEERUT	1	0	0	0	5						
FATEHPUR	0	0	0	0	11	MIRZAPUR	4	4	0	4	4						
FIROZABAD	1	3	2	0	3	MORADABAD	0	1	1	3	2						

Map of Cumulative Burning Events (01-13 Oct 2020)



Details of residue burning events in Punjab on 13-Oct-2020

S. No.	District	Tehsil / Block	Satellite	Longitude	Latitude	Time (IST)	Day / Night	Fire Power (W/m2)
1	AMRITSAR	AJNALA	S-NPP	74.69096	31.67258	13:06:00	D	2.60
2	AMRITSAR	AJNALA	S-NPP	74.65064	31.69517	13:06:00	D	5.50
3	AMRITSAR	AJNALA	S-NPP	74.72186	31.77091	13:06:00	D	1.90
4	AMRITSAR	AJNALA	S-NPP	74.72791	31.83380	13:06:00	D	3.00
5	AMRITSAR	AJNALA	S-NPP	74.68036	31.85464	13:06:00	D	8.70
6	AMRITSAR	AJNALA	S-NPP	74.72986	31.88266	13:06:00	D	2.70
7	AMRITSAR	AJNALA	S-NPP	74.71280	31.89228	13:06:00	D	3.10
8	AMRITSAR	AJNALA	S-NPP	74.81612	31.89633	13:06:00	D	2.60
9	AMRITSAR	AJNALA	S-NPP	74.89795	32.04455	13:06:00	D	4.30
10	AMRITSAR	AMRITSAR I	S-NPP	75.07401	31.54545	13:06:00	D	3.60
11	AMRITSAR	AMRITSAR I	S-NPP	75.07838	31.54634	13:06:00	D	3.30
12	AMRITSAR	AMRITSAR I	S-NPP	75.03798	31.57808	13:06:00	D	1.80
13	AMRITSAR	AMRITSAR I	S-NPP	75.01109	31.62463	13:06:00	D	3.20
14	AMRITSAR	AMRITSAR I	S-NPP	75.11666	31.65935	13:06:00	D	1.90
15	AMRITSAR	AMRITSAR I	S-NPP	75.05898	31.68835	13:06:00	D	1.70
16	AMRITSAR	AMRITSAR I	S-NPP	75.14279	31.74894	13:06:00	D	4.80
17	AMRITSAR	AMRITSAR I	S-NPP	75.06042	31.74922	13:06:00	D	3.70
18	AMRITSAR	AMRITSAR I	S-NPP	74.98364	31.75944	13:06:00	D	3.20
19	AMRITSAR	AMRITSAR I	S-NPP	74.98804	31.76034	13:06:00	D	3.20
20	AMRITSAR	AMRITSAR I	S-NPP	75.03615	31.77018	13:06:00	D	2.20
21	AMRITSAR	AMRITSAR I	S-NPP	74.99982	31.78441	13:06:00	D	2.40
22	AMRITSAR	AMRITSAR I	S-NPP	75.00018	31.78560	13:06:00	D	4.40
23	AMRITSAR	AMRITSAR I	S-NPP	75.06405	31.80177	13:06:00	D	6.90
24	AMRITSAR	AMRITSAR II	S-NPP	74.61255	31.51480	13:06:00	D	8.10
25	AMRITSAR	AMRITSAR II	S-NPP	74.84293	31.53700	13:06:00	D	2.40
26	AMRITSAR	AMRITSAR II	S-NPP	74.84633	31.53805	13:06:00	D	3.80
27	AMRITSAR	AMRITSAR II	S-NPP	74.86616	31.57265	13:06:00	D	3.80
28	AMRITSAR	AMRITSAR II	S-NPP	74.80424	31.57288	13:06:00	D	8.50
29	AMRITSAR	AMRITSAR II	S-NPP	74.66397	31.57455	13:06:00	D	4.90
30	AMRITSAR	AMRITSAR II	S-NPP	74.66279	31.57873	13:06:00	D	4.90

31	AMRITSAR	AMRITSAR II	S-NPP	74.63061	31.62885	13:06:00	D	10.00
32	AMRITSAR	AMRITSAR II	S-NPP	74.54710	31.64687	13:06:00	D	8.90
33	AMRITSAR	BABA BAKALA	S-NPP	75.17113	31.52653	13:06:00	D	4.20
34	AMRITSAR	BABA BAKALA	S-NPP	75.11740	31.57163	13:06:00	D	2.70
35	AMRITSAR	BABA BAKALA	S-NPP	75.20586	31.59822	13:06:00	D	7.40
36	AMRITSAR	BABA BAKALA	S-NPP	75.34547	31.61362	13:06:00	D	3.10
37	AMRITSAR	BABA BAKALA	S-NPP	75.21182	31.64447	13:06:00	D	4.00
38	AMRITSAR	BABA BAKALA	S-NPP	75.13828	31.66377	13:06:00	D	4.70
39	AMRITSAR	BABA BAKALA	S-NPP	75.13284	31.66697	13:06:00	D	3.20
40	AMRITSAR	BABA BAKALA	S-NPP	75.21136	31.67871	13:06:00	D	3.60
41	AMRITSAR	BABA BAKALA	S-NPP	75.21024	31.68277	13:06:00	D	3.60
42	AMRITSAR	BABA BAKALA	S-NPP	75.16824	31.68710	13:06:00	D	5.00
43	AMRITSAR	BABA BAKALA	TERRA	75.19600	31.69300	11:15:00	D	5.80
44	AMRITSAR	BABA BAKALA	S-NPP	75.14099	31.70308	13:06:00	D	11.40
45	BARNALA	BARNALA	S-NPP	75.65368	30.57658	13:06:00	D	3.00
46	BARNALA	TAPPA	S-NPP	75.51035	30.26806	13:06:00	D	3.60
47	BATHINDA	BATHINDA	S-NPP	74.88573	30.28281	13:06:00	D	3.30
48	BATHINDA	TALWANDI SABO	S-NPP	75.14188	29.81600	13:06:00	D	10.40
49	BATHINDA	TALWANDI SABO	S-NPP	75.14648	29.81694	13:06:00	D	10.40
50	BATHINDA	TALWANDI SABO	S-NPP	75.12808	29.83104	13:06:00	D	5.80
51	BATHINDA	TALWANDI SABO	S-NPP	75.14190	29.83387	13:06:00	D	6.90
52	BATHINDA	TALWANDI SABO	S-NPP	75.14075	29.83810	13:06:00	D	43.50
53	BATHINDA	TALWANDI SABO	S-NPP	75.11155	29.84272	13:06:00	D	17.40
54	BATHINDA	TALWANDI SABO	S-NPP	75.11616	29.84369	13:06:00	D	6.10
55	BATHINDA	TALWANDI SABO	S-NPP	75.12077	29.84467	13:06:00	D	6.10
56	BATHINDA	TALWANDI SABO	S-NPP	75.11884	29.84703	13:06:00	D	8.60
57	BATHINDA	TALWANDI SABO	S-NPP	74.99093	29.88932	13:06:00	D	3.00
58	BATHINDA	TALWANDI SABO	S-NPP	74.88458	30.00462	13:06:00	D	4.00
59	FARIDKOT	FARIDKOT	S-NPP	74.81131	30.55614	13:06:00	D	2.80
60	FARIDKOT	FARIDKOT	S-NPP	74.64962	30.64025	13:06:00	D	2.80
61	FARIDKOT	FARIDKOT	S-NPP	74.76736	30.70122	13:06:00	D	3.40
62	FARIDKOT	FARIDKOT	NOAA-19	74.74503	30.72111	18:27:00	N	6.00
63	FARIDKOT	FARIDKOT	S-NPP	74.66150	30.73007	13:06:00	D	3.50

64	FARIDKOT	FARIDKOT	S-NPP	74.48818	30.73391	13:06:00	D	3.00
65	FARIDKOT	FARIDKOT	S-NPP	74.79751	30.75233	13:06:00	D	12.10
66	FARIDKOT	FARIDKOT	S-NPP	74.80216	30.75329	13:06:00	D	15.90
67	FARIDKOT	FARIDKOT	S-NPP	74.79846	30.75486	13:06:00	D	17.80
68	FARIDKOT	FARIDKOT	S-NPP	74.53392	30.77095	13:06:00	D	4.00
69	FATEHGARH SAHIB	FATEHGARH SAHIB	S-NPP	76.52229	30.56523	13:06:00	D	3.10
70	FATEHGARH SAHIB	FATEHGARH SAHIB	S-NPP	76.32993	30.58451	13:06:00	D	10.00
71	FATEHGARH SAHIB	FATEHGARH SAHIB	S-NPP	76.53435	30.58794	13:06:00	D	3.20
72	FATEHGARH SAHIB	KHAMANOH	S-NPP	76.31005	30.72312	13:06:00	D	1.30
73	FATEHGARH SAHIB	KHAMANOH	S-NPP	76.36103	30.75227	13:06:00	D	5.60
74	FATEHGARH SAHIB	KHAMANOH	S-NPP	76.36284	30.75381	13:06:00	D	7.00
75	FAZILKA	FAZILKA	S-NPP	74.15916	30.30087	13:06:00	D	4.80
76	FAZILKA	FAZILKA	S-NPP	74.15600	30.30348	13:06:00	D	8.90
77	FAZILKA	FAZILKA	S-NPP	74.16113	30.30456	13:06:00	D	8.90
78	FAZILKA	FAZILKA	S-NPP	74.15791	30.30529	13:06:00	D	12.40
79	FAZILKA	JALALABAD	S-NPP	74.25423	30.51094	13:06:00	D	7.70
80	FAZILKA	JALALABAD	S-NPP	74.34800	30.55392	13:06:00	D	4.10
81	FAZILKA	JALALABAD	S-NPP	74.31432	30.58682	13:06:00	D	2.50
82	FAZILKA	JALALABAD	S-NPP	74.31318	30.66515	13:06:00	D	8.70
83	FAZILKA	JALALABAD	S-NPP	74.36385	30.69813	13:06:00	D	2.20
84	FAZILKA	JALALABAD	S-NPP	74.40424	30.79391	13:06:00	D	4.10
85	FIROZPUR	FIROZPUR	S-NPP	74.45297	30.78582	13:06:00	D	4.90
86	FIROZPUR	FIROZPUR	S-NPP	74.40518	30.79784	13:06:00	D	6.80
87	FIROZPUR	FIROZPUR	S-NPP	74.45373	30.80829	13:06:00	D	3.60
88	FIROZPUR	FIROZPUR	S-NPP	74.90427	30.81296	13:06:00	D	6.20
89	FIROZPUR	FIROZPUR	S-NPP	74.75168	30.81670	13:06:00	D	3.40
90	FIROZPUR	FIROZPUR	S-NPP	74.48147	30.83706	13:06:00	D	5.20
91	FIROZPUR	FIROZPUR	S-NPP	74.74064	30.93240	13:06:00	D	1.30
92	FIROZPUR	FIROZPUR	S-NPP	74.54646	30.94263	13:06:00	D	1.40
93	FIROZPUR	FIROZPUR	S-NPP	74.79272	30.95663	13:06:00	D	11.80
94	FIROZPUR	FIROZPUR	S-NPP	74.74036	30.96156	13:06:00	D	5.00
95	FIROZPUR	FIROZPUR	S-NPP	74.74162	30.96392	13:06:00	D	3.60
96	FIROZPUR	FIROZPUR	S-NPP	74.67621	30.97930	13:06:00	D	3.90

97	FIROZPUR	FIROZPUR	S-NPP	74.64554	31.01776	13:06:00	D	11.20
98	FIROZPUR	FIROZPUR	S-NPP	74.80122	31.04138	13:06:00	D	5.70
99	FIROZPUR	FIROZPUR	S-NPP	74.69213	31.06334	13:06:00	D	2.60
100	FIROZPUR	FIROZPUR	S-NPP	74.77162	31.08211	13:06:00	D	3.00
101	FIROZPUR	ZIRA	S-NPP	75.27519	30.95534	13:06:00	D	6.70
102	FIROZPUR	ZIRA	S-NPP	75.04355	31.06541	13:06:00	D	4.00
103	FIROZPUR	ZIRA	S-NPP	74.96251	31.12258	13:06:00	D	4.80
104	GURDASPUR	BATALA	S-NPP	75.37054	31.63569	13:06:00	D	2.30
105	GURDASPUR	BATALA	S-NPP	75.29447	31.68711	13:06:00	D	4.00
106	GURDASPUR	BATALA	S-NPP	75.23361	31.69610	13:06:00	D	9.70
107	GURDASPUR	BATALA	S-NPP	75.21968	31.69756	13:06:00	D	2.20
108	GURDASPUR	BATALA	S-NPP	75.15026	31.75477	13:06:00	D	2.90
109	GURDASPUR	BATALA	S-NPP	75.11988	31.76574	13:06:00	D	6.30
110	GURDASPUR	BATALA	S-NPP	75.12420	31.76663	13:06:00	D	6.30
111	GURDASPUR	BATALA	S-NPP	75.32171	31.76864	13:06:00	D	5.30
112	GURDASPUR	BATALA	S-NPP	75.19086	31.77170	13:06:00	D	11.70
113	GURDASPUR	BATALA	S-NPP	75.12398	31.78379	13:06:00	D	3.00
114	GURDASPUR	BATALA	S-NPP	75.42065	31.81009	13:06:00	D	2.50
115	GURDASPUR	BATALA	S-NPP	75.12241	31.82410	13:06:00	D	11.50
116	GURDASPUR	BATALA	S-NPP	75.06611	31.82964	13:06:00	D	7.10
117	GURDASPUR	BATALA	S-NPP	74.92517	31.88726	13:06:00	D	2.70
118	GURDASPUR	DERA BABA NANAK	S-NPP	74.92086	31.93988	13:06:00	D	4.70
119	GURDASPUR	DERA BABA NANAK	S-NPP	75.09689	31.96754	13:06:00	D	5.20
120	GURDASPUR	DERA BABA NANAK	S-NPP	75.11897	32.00209	13:06:00	D	3.00
121	GURDASPUR	GURDASPUR	S-NPP	75.32525	31.85336	13:06:00	D	4.80
122	GURDASPUR	GURDASPUR	S-NPP	75.32462	31.85426	13:06:00	D	4.10
123	GURDASPUR	GURDASPUR	S-NPP	75.32833	31.85824	13:06:00	D	2.30
124	GURDASPUR	GURDASPUR	S-NPP	75.32771	31.85912	13:06:00	D	2.80
125	GURDASPUR	GURDASPUR	S-NPP	75.39068	31.95143	13:06:00	D	3.70
126	GURDASPUR	GURDASPUR	S-NPP	75.31445	31.99088	13:06:00	D	9.00
127	HOSHIARPUR	DASUYA	NOAA-19	75.73503	31.61943	18:27:00	N	6.00
128	HOSHIARPUR	DASUYA	S-NPP	75.59815	31.63500	13:06:00	D	7.20
129	HOSHIARPUR	DASUYA	S-NPP	75.60225	31.63583	13:06:00	D	7.20

130	HOSHIARPUR	DASUYA	S-NPP	75.64069	31.79476	13:06:00	D	5.90
131	JALANDHAR	JALANDHAR II	S-NPP	75.65907	31.59591	13:06:00	D	3.40
132	JALANDHAR	JALANDHAR II	S-NPP	75.66015	31.59724	13:06:00	D	2.70
133	JALANDHAR	NAKODAR	S-NPP	75.41099	30.99137	13:06:00	D	5.30
134	JALANDHAR	NAKODAR	S-NPP	75.40559	30.99458	13:06:00	D	4.00
135	JALANDHAR	SHAHKOT	S-NPP	75.11269	31.15395	13:06:00	D	4.30
136	JALANDHAR	SHAHKOT	S-NPP	75.11354	31.15437	13:06:00	D	6.20
137	JALANDHAR	SHAHKOT	S-NPP	75.11710	31.15485	13:06:00	D	5.70
138	KAPURTHALA	BHOLATH	NOAA-19	75.56517	31.61045	18:27:00	N	6.00
139	KAPURTHALA	KAPURTHALA	S-NPP	75.37592	31.24769	13:06:00	D	2.70
140	KAPURTHALA	KAPURTHALA	S-NPP	75.19931	31.40062	13:06:00	D	4.00
141	KAPURTHALA	KAPURTHALA	S-NPP	75.20363	31.40151	13:06:00	D	4.00
142	KAPURTHALA	KAPURTHALA	S-NPP	75.40582	31.53281	13:06:00	D	9.90
143	KAPURTHALA	SULTANPUR LODHI	S-NPP	75.16792	31.20921	13:06:00	D	4.40
144	LUDHIANA	RAIKOT	S-NPP	75.71216	30.68908	13:06:00	D	3.50
145	MANSA	BUDHLADA	S-NPP	75.57336	29.87804	13:06:00	D	5.10
146	MANSA	BUDHLADA	S-NPP	75.73238	29.92761	13:06:00	D	4.00
147	MANSA	SARDULGARH	S-NPP	75.29404	29.67548	13:06:00	D	12.20
148	MANSA	SARDULGARH	S-NPP	75.26907	29.67916	13:06:00	D	5.20
149	MANSA	SARDULGARH	S-NPP	75.22582	29.71472	13:06:00	D	3.20
150	MUKTSAR	GIDDARBAHA	TERRA	74.67400	30.38500	11:15:00	D	5.40
151	MUKTSAR	GIDDARBAHA	S-NPP	74.72432	30.38605	13:06:00	D	4.90
152	MUKTSAR	GIDDARBAHA	S-NPP	74.72907	30.38704	13:06:00	D	6.40
153	PATIALA	PATIALA	S-NPP	76.59303	30.15802	13:06:00	D	2.40
154	PATIALA	PATIALA	S-NPP	76.45973	30.26996	13:06:00	D	7.70
155	PATIALA	RAJPURA	S-NPP	76.65199	30.31569	13:06:00	D	8.80
156	PATIALA	RAJPURA	S-NPP	76.74255	30.35341	13:06:00	D	7.10
157	PATIALA	RAJPURA	TERRA	76.61600	30.37200	11:15:00	D	19.80
158	PATIALA	RAJPURA	S-NPP	76.70213	30.41420	13:06:00	D	3.50
159	PATIALA	RAJPURA	S-NPP	76.51995	30.46780	13:06:00	D	17.90
160	PATIALA	RAJPURA	S-NPP	76.53373	30.50714	13:06:00	D	3.60
161	PATIALA	RAJPURA	S-NPP	76.68183	30.50774	13:06:00	D	6.10
162	PATIALA	RAJPURA	S-NPP	76.69859	30.51102	13:06:00	D	3.20

163	PATIALA	RAJPURA	S-NPP	76.73299	30.51372	13:06:00	D	2.80
164	PATIALA	RAJPURA	S-NPP	76.61507	30.51491	13:06:00	D	3.50
165	PATIALA	RAJPURA	S-NPP	76.53143	30.53923	13:06:00	D	4.20
166	PATIALA	RAJPURA	S-NPP	76.58588	30.58214	13:06:00	D	4.80
167	PATIALA	RAJPURA	S-NPP	76.58926	30.58253	13:06:00	D	11.20
168	PATIALA	RAJPURA	S-NPP	76.59153	30.58322	13:06:00	D	4.80
169	PATIALA	SAMANA	S-NPP	76.18478	29.84136	13:06:00	D	9.50
170	PATIALA	SAMANA	S-NPP	76.18594	29.84151	13:06:00	D	7.40
171	PATIALA	SAMANA	S-NPP	76.20789	29.87111	13:06:00	D	12.30
172	PATIALA	SAMANA	S-NPP	76.21385	29.88069	13:06:00	D	4.90
173	PATIALA	SAMANA	S-NPP	76.21786	29.88149	13:06:00	D	4.90
174	PATIALA	SAMANA	S-NPP	76.07594	29.88685	13:06:00	D	3.80
175	PATIALA	SAMANA	S-NPP	76.03074	29.99586	13:06:00	D	3.20
176	PATIALA	SAMANA	S-NPP	76.02969	29.99987	13:06:00	D	7.40
177	PATIALA	SAMANA	S-NPP	76.19884	30.02076	13:06:00	D	3.10
178	PATIALA	SAMANA	S-NPP	76.20821	30.09818	13:06:00	D	4.50
179	PATIALA	SAMANA	S-NPP	76.25793	30.21352	13:06:00	D	6.40
180	RUPNAGAR	ANANDPUR SAHIB	S-NPP	76.49987	31.20524	13:06:00	D	2.60
181	SANGRUR	DHURI	S-NPP	75.86415	30.42522	13:06:00	D	2.60
182	SANGRUR	MOONAK	S-NPP	75.99271	29.76967	13:06:00	D	5.60
183	SANGRUR	MOONAK	S-NPP	75.99304	29.82362	13:06:00	D	5.80
184	SANGRUR	SANGRUR	S-NPP	76.05532	30.23180	13:06:00	D	3.10
185	SAS NAGAR	DERABASSI	S-NPP	76.76662	30.56444	13:06:00	D	10.50
186	SAS NAGAR	KHARAR	S-NPP	76.66030	30.77868	13:06:00	D	13.50
187	SAS NAGAR	KHARAR	TERRA	76.69900	30.78400	11:15:00	D	7.50
188	SBS NAGAR	BALACHAUR	S-NPP	76.29977	30.99597	13:06:00	D	4.90
189	TARN TARAN	KHADOOR SAHIB	S-NPP	74.90527	31.26470	13:06:00	D	5.50
190	TARN TARAN	KHADOOR SAHIB	S-NPP	75.02799	31.29898	13:06:00	D	11.70
191	TARN TARAN	KHADOOR SAHIB	S-NPP	75.07650	31.30901	13:06:00	D	10.30
192	TARN TARAN	KHADOOR SAHIB	S-NPP	75.08087	31.30992	13:06:00	D	10.30
193	TARN TARAN	KHADOOR SAHIB	S-NPP	74.96770	31.31278	13:06:00	D	4.70
194	TARN TARAN	KHADOOR SAHIB	S-NPP	74.92843	31.31787	13:06:00	D	9.60
195	TARN TARAN	KHADOOR SAHIB	S-NPP	74.82214	31.32591	13:06:00	D	9.70

196	TARN TARAN	KHADOOR SAHIB	S-NPP	75.01550	31.32699	13:06:00	D	14.30
197	TARN TARAN	KHADOOR SAHIB	S-NPP	75.11034	31.33772	13:06:00	D	3.60
198	TARN TARAN	KHADOOR SAHIB	S-NPP	74.97811	31.36312	13:06:00	D	5.70
199	TARN TARAN	KHADOOR SAHIB	S-NPP	75.07982	31.36699	13:06:00	D	3.00
200	TARN TARAN	KHADOOR SAHIB	S-NPP	75.06436	31.37246	13:06:00	D	2.70
201	TARN TARAN	KHADOOR SAHIB	S-NPP	74.83646	31.37750	13:06:00	D	5.70
202	TARN TARAN	KHADOOR SAHIB	S-NPP	75.12201	31.37916	13:06:00	D	3.90
203	TARN TARAN	KHADOOR SAHIB	S-NPP	75.12224	31.39757	13:06:00	D	11.20
204	TARN TARAN	KHADOOR SAHIB	S-NPP	74.79549	31.41286	13:06:00	D	2.30
205	TARN TARAN	KHADOOR SAHIB	S-NPP	74.86202	31.43138	13:06:00	D	7.50
206	TARN TARAN	KHADOOR SAHIB	S-NPP	74.86422	31.43168	13:06:00	D	13.60
207	TARN TARAN	KHADOOR SAHIB	TERRA	74.82600	31.43200	11:15:00	D	14.10
208	TARN TARAN	KHADOOR SAHIB	S-NPP	74.82816	31.43304	13:06:00	D	8.50
209	TARN TARAN	KHADOOR SAHIB	S-NPP	74.86086	31.43554	13:06:00	D	86.50
210	TARN TARAN	KHADOOR SAHIB	S-NPP	74.86305	31.43583	13:06:00	D	13.60
211	TARN TARAN	KHADOOR SAHIB	TERRA	74.81700	31.44300	11:15:00	D	8.00
212	TARN TARAN	KHADOOR SAHIB	TERRA	74.80600	31.44400	11:15:00	D	15.90
213	TARN TARAN	KHADOOR SAHIB	S-NPP	74.74144	31.46787	13:06:00	D	4.70
214	TARN TARAN	KHADOOR SAHIB	S-NPP	74.99783	31.46874	13:06:00	D	9.30
215	TARN TARAN	KHADOOR SAHIB	S-NPP	74.74600	31.46882	13:06:00	D	4.70
216	TARN TARAN	KHADOOR SAHIB	S-NPP	75.00225	31.46967	13:06:00	D	9.30
217	TARN TARAN	KHADOOR SAHIB	S-NPP	74.77451	31.47034	13:06:00	D	12.60
218	TARN TARAN	KHADOOR SAHIB	S-NPP	75.03242	31.47035	13:06:00	D	3.60
219	TARN TARAN	KHADOOR SAHIB	TERRA	75.03100	31.51400	11:15:00	D	8.70
220	TARN TARAN	KHADOOR SAHIB	S-NPP	75.17227	31.52245	13:06:00	D	4.10
221	TARN TARAN	KHADOOR SAHIB	S-NPP	74.78300	31.54638	13:06:00	D	3.50
222	TARN TARAN	PATTI	S-NPP	74.83184	31.17918	13:06:00	D	1.70
223	TARN TARAN	PATTI	S-NPP	74.72549	31.20029	13:06:00	D	3.80
224	TARN TARAN	PATTI	S-NPP	74.77840	31.20260	13:06:00	D	2.00
225	TARN TARAN	PATTI	TERRA	74.88300	31.20300	11:15:00	D	9.20
226	TARN TARAN	PATTI	TERRA	74.84100	31.20900	11:15:00	D	7.40
227	TARN TARAN	PATTI	S-NPP	74.52898	31.21259	13:06:00	D	1.70
228	TARN TARAN	PATTI	S-NPP	74.66746	31.21481	13:06:00	D	5.50

229	TARN TARAN	PATTI	S-NPP	74.67210	31.21579	13:06:00	D	6.60
230	TARN TARAN	PATTI	S-NPP	74.61718	31.23559	13:06:00	D	7.20
231	TARN TARAN	PATTI	S-NPP	74.88403	31.23820	13:06:00	D	3.40
232	TARN TARAN	PATTI	S-NPP	74.70892	31.25920	13:06:00	D	2.90
233	TARN TARAN	PATTI	S-NPP	74.70773	31.26341	13:06:00	D	4.40
234	TARN TARAN	PATTI	S-NPP	74.57784	31.27403	13:06:00	D	3.50
235	TARN TARAN	PATTI	S-NPP	74.52724	31.27673	13:06:00	D	4.40
236	TARN TARAN	PATTI	S-NPP	74.71261	31.28490	13:06:00	D	3.40
237	TARN TARAN	PATTI	S-NPP	74.69986	31.29556	13:06:00	D	6.20
238	TARN TARAN	PATTI	S-NPP	74.64186	31.31005	13:06:00	D	2.80
239	TARN TARAN	PATTI	S-NPP	74.70316	31.31853	13:06:00	D	3.70
240	TARN TARAN	PATTI	S-NPP	74.68352	31.31884	13:06:00	D	4.00
241	TARN TARAN	PATTI	S-NPP	74.65433	31.35285	13:06:00	D	2.70
242	TARN TARAN	PATTI	S-NPP	74.65658	31.36224	13:06:00	D	11.50
243	TARN TARAN	PATTI	S-NPP	74.70276	31.37185	13:06:00	D	6.00
244	TARN TARAN	PATTI	TERRA	74.76600	31.37600	11:15:00	D	10.30
245	TARN TARAN	PATTI	S-NPP	74.62807	31.38611	13:06:00	D	4.10
246	TARN TARAN	PATTI	S-NPP	74.62965	31.38788	13:06:00	D	5.30
247	TARN TARAN	PATTI	NOAA-19	74.70621	31.40832	18:27:00	N	6.00

Details of residue burning events in Haryana on 13-Oct-2020

S. No.	District	Tehsil / Block	Satellite	Longitude	Latitude	Time (IST)	Day / Night	Fire Power (W/m ²)
1	AMBALA	AMBALA	S-NPP	76.77246	30.22151	13:06:00	D	7.90
2	AMBALA	AMBALA	S-NPP	76.87531	30.22938	13:06:00	D	2.90
3	AMBALA	AMBALA	S-NPP	76.87433	30.23320	13:06:00	D	4.50
4	AMBALA	AMBALA	S-NPP	76.66724	30.30244	13:06:00	D	3.90
5	AMBALA	AMBALA	S-NPP	76.98242	30.30586	13:06:00	D	2.10
6	AMBALA	AMBALA	S-NPP	76.98876	30.31699	13:06:00	D	3.40
7	AMBALA	BARARA	S-NPP	77.01080	30.22630	13:06:00	D	5.30
8	AMBALA	BARARA	S-NPP	77.00799	30.22714	13:06:00	D	7.50
9	AMBALA	BARARA	S-NPP	77.08944	30.28652	13:06:00	D	3.30
10	AMBALA	BARARA	S-NPP	77.17134	30.31791	13:06:00	D	4.40
11	AMBALA	NARAYANGARH	S-NPP	77.03941	30.38638	13:06:00	D	4.90
12	FATEHABAD	FATEHABAD	S-NPP	75.79451	29.59428	13:06:00	D	4.70
13	FATEHABAD	RATIA	S-NPP	75.44358	29.71705	01:48:00	N	0.40
14	FATEHABAD	TOHANA	S-NPP	75.84658	29.61773	13:06:00	D	5.40
15	FATEHABAD	TOHANA	S-NPP	75.83913	29.68313	13:06:00	D	3.30
16	FATEHABAD	TOHANA	NOAA-19	75.81267	29.69703	18:27:00	N	7.00
17	HISAR	HANSI	S-NPP	75.95108	29.29738	13:06:00	D	3.30
18	HISAR	HISAR	S-NPP	76.04198	29.39070	13:06:00	D	3.40
19	JIND	JIND	S-NPP	76.38093	29.47156	13:06:00	D	5.60
20	JIND	SAFIDON	S-NPP	76.53382	29.42595	13:06:00	D	4.40
21	KAITHAL	GUHLA	S-NPP	76.23380	29.90141	13:06:00	D	2.60
22	KAITHAL	KAITHAL	S-NPP	76.36230	29.56106	13:06:00	D	2.00
23	KAITHAL	KAITHAL	S-NPP	76.40982	29.58724	13:06:00	D	2.70
24	KAITHAL	KAITHAL	S-NPP	76.65865	29.79075	13:06:00	D	5.30
25	KAITHAL	KAITHAL	S-NPP	76.26518	29.85705	13:06:00	D	2.90
26	KARNAL	ASSANDH	S-NPP	76.67943	29.60859	13:06:00	D	4.30
27	KARNAL	ASSANDH	S-NPP	76.67658	29.61126	13:06:00	D	8.90
28	KARNAL	ASSANDH	TERRA	76.64300	29.62700	11:15:00	D	13.00
29	KARNAL	ASSANDH	S-NPP	76.72987	29.63816	13:06:00	D	3.00
30	KARNAL	GHARAUNDA	S-NPP	76.97038	29.58347	13:06:00	D	4.90

31	KARNAL	INDRI	S-NPP	77.19965	29.88249	13:06:00	D	3.00
32	KARNAL	INDRI	S-NPP	77.17311	29.92109	13:06:00	D	10.40
33	KARNAL	INDRI	S-NPP	77.17026	29.92307	13:06:00	D	8.00
34	KARNAL	KARNAL	S-NPP	76.85461	29.63829	13:06:00	D	8.60
35	KARNAL	KARNAL	S-NPP	76.85686	29.63848	13:06:00	D	9.50
36	KARNAL	KARNAL	S-NPP	76.74696	29.64153	13:06:00	D	6.20
37	KARNAL	KARNAL	S-NPP	76.79237	29.65045	13:06:00	D	4.40
38	KARNAL	KARNAL	S-NPP	77.05869	29.70641	13:06:00	D	7.30
39	KARNAL	KARNAL	S-NPP	77.06416	29.70746	13:06:00	D	7.30
40	KARNAL	KARNAL	S-NPP	76.87249	29.73092	13:06:00	D	5.00
41	KARNAL	KARNAL	S-NPP	76.71054	29.75183	13:06:00	D	5.00
42	KARNAL	KARNAL	S-NPP	76.70561	29.77128	13:06:00	D	4.40
43	KARNAL	KARNAL	S-NPP	76.74738	29.77128	13:06:00	D	10.10
44	KARNAL	KARNAL	S-NPP	77.00286	29.78074	13:06:00	D	3.80
45	KARNAL	KARNAL	S-NPP	77.04125	29.78823	13:06:00	D	7.00
46	KARNAL	KARNAL	S-NPP	77.04311	29.79154	13:06:00	D	6.50
47	KARNAL	KARNAL	S-NPP	77.01360	29.80691	13:06:00	D	15.40
48	KARNAL	NILOKHERI	S-NPP	76.83252	29.89357	13:06:00	D	3.90
49	KURUKSHETRA	SHAHABAD	S-NPP	76.75881	30.14632	13:06:00	D	1.80
50	KURUKSHETRA	SHAHABAD	S-NPP	76.89986	30.16531	13:06:00	D	3.70
51	KURUKSHETRA	SHAHABAD	S-NPP	76.83132	30.19671	13:06:00	D	3.20
52	KURUKSHETRA	SHAHABAD	TERRA	76.88200	30.19900	11:15:00	D	5.30
53	KURUKSHETRA	SHAHABAD	S-NPP	76.78293	30.20338	13:06:00	D	4.70
54	KURUKSHETRA	THANESAR	TERRA	76.88500	29.93100	11:15:00	D	7.00
55	KURUKSHETRA	THANESAR	S-NPP	76.77291	29.94279	13:06:00	D	7.70
56	KURUKSHETRA	THANESAR	S-NPP	76.77068	29.94600	13:06:00	D	14.20
57	KURUKSHETRA	THANESAR	S-NPP	76.77193	29.94665	13:06:00	D	7.70
58	KURUKSHETRA	THANESAR	S-NPP	77.08649	29.98651	13:06:00	D	3.40
59	PALWAL	HODAL	NOAA-19	77.41899	27.90040	18:27:00	N	6.50
60	PANIPAT	PANIPAT	S-NPP	76.93942	29.46024	13:06:00	D	13.80
61	SIRSA	SIRSA	S-NPP	75.11076	29.84091	13:06:00	D	13.30
62	SONIPAT	KHARKHODA	NOAA-19	76.80267	28.96042	18:27:00	N	8.00
63	YAMUNANAGAR	JAGADHRI	TERRA	77.14900	30.26800	11:15:00	D	5.70
64	YAMUNANAGAR	JAGADHRI	TERRA	77.18500	30.28100	11:15:00	D	11.00

Details of residue burning events in Uttar Pradesh on 13-Oct-2020

S. No.	District	Tehsil / Block	Satellite	Longitude	Latitude	Time (IST)	Day / Night	Fire Power (W/m ²)
1	ALIGARH	GABHANA	S-NPP	77.96712	27.93103	01:48:00	N	1.10
2	ALIGARH	IGLAS	METOP-1	77.80237	27.73871	21:19:00	N	31.00
3	AURAIYA	BIDHUNA	S-NPP	79.69264	26.78873	01:48:00	N	0.40
4	AZAMGARH	SAGRI	METOP-2	83.28617	26.19360	20:05:00	N	6.00
5	AZAMGARH	SAGRI	METOP-2	83.25706	26.25649	20:05:00	N	6.00
6	AZAMGARH	SAGRI	METOP-2	83.34441	26.30140	20:05:00	N	6.00
7	BAGHPAT	BAGHPAT	S-NPP	77.30367	29.04251	01:48:00	N	0.70
8	BALLIA	SIKANDARPUR	METOP-2	83.94617	26.03191	20:05:00	N	7.00
9	BALLIA	SIKANDARPUR	METOP-2	83.97529	26.04987	20:05:00	N	6.00
10	BAREILLY	AONLA	S-NPP	79.10446	28.46517	01:48:00	N	0.70
11	BAREILLY	MIRGANJ	S-NPP	79.27943	28.53529	13:06:00	D	2.50
12	DEORIA	BHATPAR RANI	METOP-2	84.03999	26.29541	20:05:00	N	7.33
13	HAMIRPUR	SARILA	S-NPP	79.62090	25.76498	13:00:00	D	1.30
14	HARDOI	BILGRAM	S-NPP	80.24009	27.13113	13:06:00	D	1.70
15	HARDOI	BILGRAM	S-NPP	80.22086	27.13856	13:06:00	D	4.40
16	KANNAUJ	TIRWA	S-NPP	79.52193	26.90567	01:48:00	N	0.70
17	KANPUR DEHAT	AKBARPUR	S-NPP	79.96540	26.45620	13:06:00	D	2.70
18	KHERI	GOLA	S-NPP	80.54400	28.06306	13:06:00	D	4.20
19	KHERI	GOLA	S-NPP	80.40958	28.17411	13:06:00	D	6.90
20	KHERI	MOHMADI	S-NPP	80.27154	28.06676	13:06:00	D	1.90
21	KHERI	MOHMADI	S-NPP	80.28411	28.09298	13:06:00	D	3.40
22	MAINPURI	MAINPURI	S-NPP	78.78587	27.17977	01:48:00	N	0.80
23	MATHURA	MAT	S-NPP	77.72942	27.88082	01:48:00	N	0.90
24	RAMPUR	TANDA	S-NPP	78.99483	29.12399	13:06:00	D	3.20
25	SHAHJAHANPUR	PUWANYA	TERRA	80.15700	28.11900	22:15:00	N	7.60
26	SHAHJAHANPUR	PUWANYA	S-NPP	80.11171	28.12639	01:48:00	N	3.30
27	SHAHJAHANPUR	PUWANYA	S-NPP	80.11356	28.15680	01:48:00	N	0.70
28	SHAHJAHANPUR	PUWANYA	S-NPP	80.16714	28.16232	01:48:00	N	1.20
29	SHAHJAHANPUR	PUWANYA	S-NPP	80.02824	28.19697	01:48:00	N	0.50
30	SHAHJAHANPUR	PUWANYA	S-NPP	80.03019	28.29450	01:48:00	N	0.30
31	SHAHJAHANPUR	SHAHJAHANPUR	S-NPP	79.85735	27.80900	13:06:00	D	4.00

32	SHAHJAHANPUR	SHAHJAHANPUR	S-NPP	79.85658	27.81247	13:06:00	D	2.10
33	SHAHJAHANPUR	SHAHJAHANPUR	S-NPP	79.85583	27.81594	13:06:00	D	2.10
34	SHAHJAHANPUR	SHAHJAHANPUR	S-NPP	79.86301	27.82438	13:06:00	D	3.40
35	SHAHJAHANPUR	SHAHJAHANPUR	S-NPP	79.89042	27.90900	13:06:00	D	5.20
36	SHAHJAHANPUR	SHAHJAHANPUR	S-NPP	79.88967	27.91246	13:06:00	D	3.80
37	SHAHJAHANPUR	TILHAR	S-NPP	79.56703	27.93409	01:48:00	N	0.80
38	SHARANPUR	SHARANPUR	S-NPP	77.53178	30.05226	01:48:00	N	1.40
39	SHRAWASTI	BHINGA	S-NPP	81.73547	27.85062	01:48:00	N	0.40

The study used images received from following Satellites at IARI Satellite Ground Station

S. No.	Satellite Name	Sensor	Resolution (meter)	Day / Night Passes
1.	Suomi NPP	VIIRS	375 / 750	Both
2.	Terra	MODIS	1000	Both
3.	Aqua	MODIS	1000	Both
4.	NOAA – 18	AVHRR	1000	Night
5.	NOAA – 19	AVHRR	1000	Night
6.	Metop - 1	AVHRR	1000	Night
7.	Metop - 2	AVHRR	1000	Night

Study Team

ICAR – HQ	Dr K. Alagusundaram	DDG (AG. ENGG.)	ddgengg@icar.org.in
	Dr S. Bhasker	ADG (NRM)	adgagroandaf@gmail.com
	Dr K.K. Singh	ADG (AG. ENGG)	kanchansingh044@gmail.com
ICAR - IARI	Dr V.K. Sehgal	Professor & Nodal Scientist	iaricreams@gmail.com
	Dr Rajkumar Dhakar	Scientist	raidhakar.iari@gmail.com
	Mr Rakeswer Verma	Chief Technical Officer	rakeshwar.verma@icar.gov.in
	Mr Mohd Jahangir	Lab Assistant (KRISHI)	mjahangir198@gmail.com
ICAR - ATARI	Dr Rajbir Singh	Director ATARI (Zone-I) Ludhiana	rajbirsingh.zpd@gmail.com
	Dr S.K. Singh	Director ATARI (Zone-II) Jodhpur	sushilsinghiipr@yahoo.co.in
	Dr Atar Singh	Director ATARI (Zone-III) Kanpur	zpdicarkanpur@gmail.com
ICAR - IASRI	Dr Rajender Parsad	Director IASRI	rajender.parsad@icar.gov.in

Softcopy of this report and latest statistics can be seen on <http://creams.iari.res.in>

GIS Maps of fire events can be visualized online on ICAR KRISHI Geoportal website: <http://geoportal.icar.gov.in:8080/geoexplorer/composer/>

(Part of KRISHI Portal: <https://krishi.icar.gov.in> initiative)
