

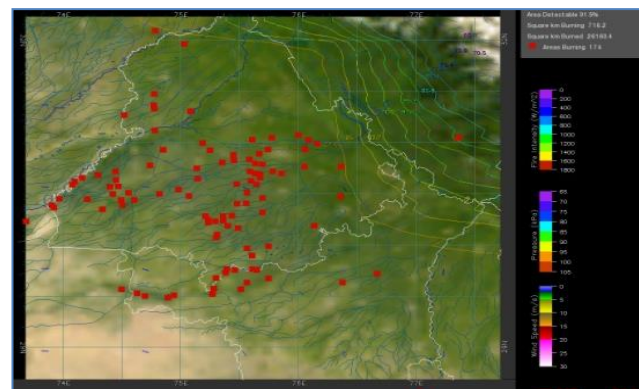
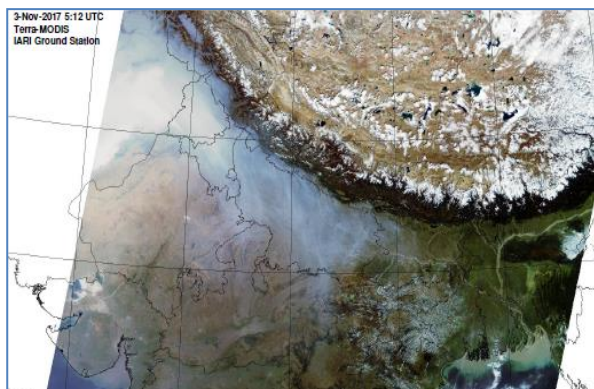


MONITORING PADDY RESIDUE BURNING IN NORTH INDIA USING SATELLITE REMOTE SENSING DURING 2020

Bulletin
No. 20

Events Date:
20-Oct-2020

Issued on:
21-Oct-2020



Prepared by:

Consortium for Research on Agroecosystem Monitoring and Modeling from Space (CREAMS) Laboratory,
Division of Agricultural Physics, ICAR – Indian Agricultural Research Institute, New Delhi – 110012

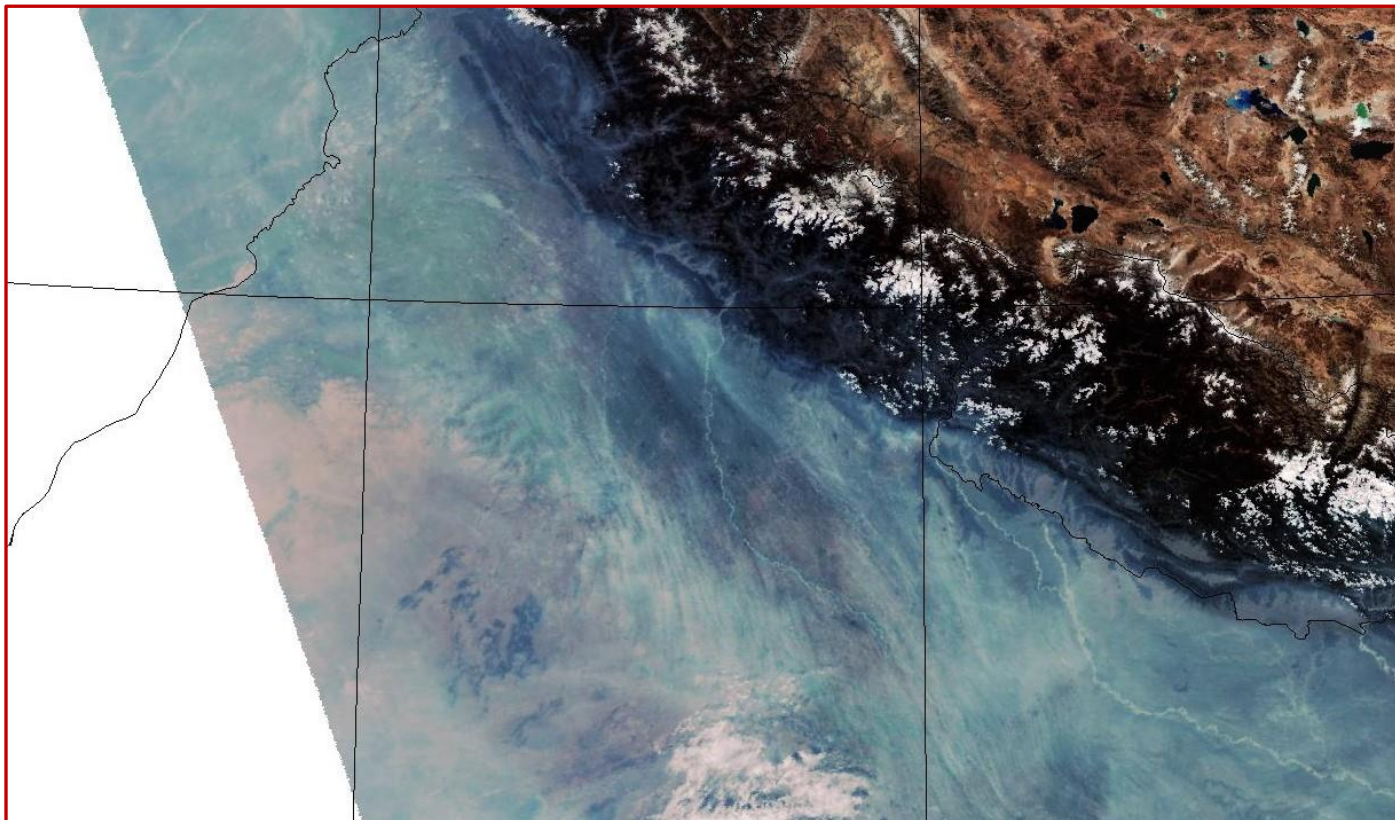
<http://creams.iari.res.in>



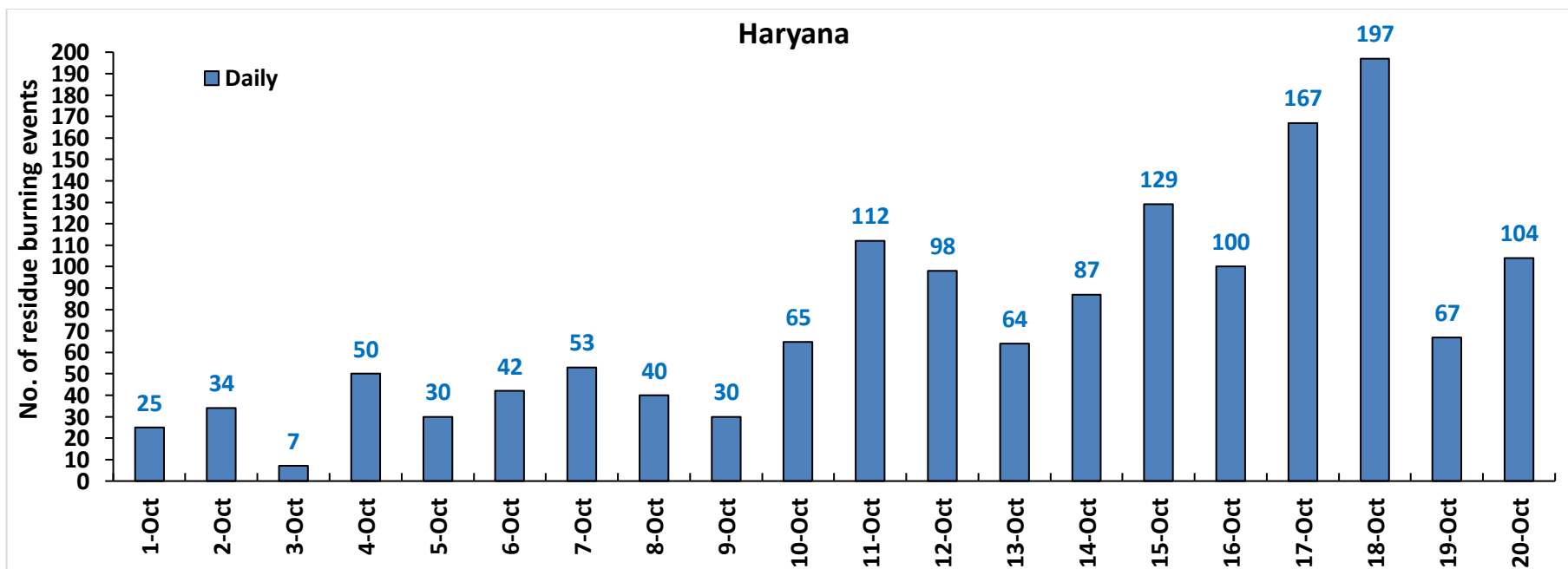
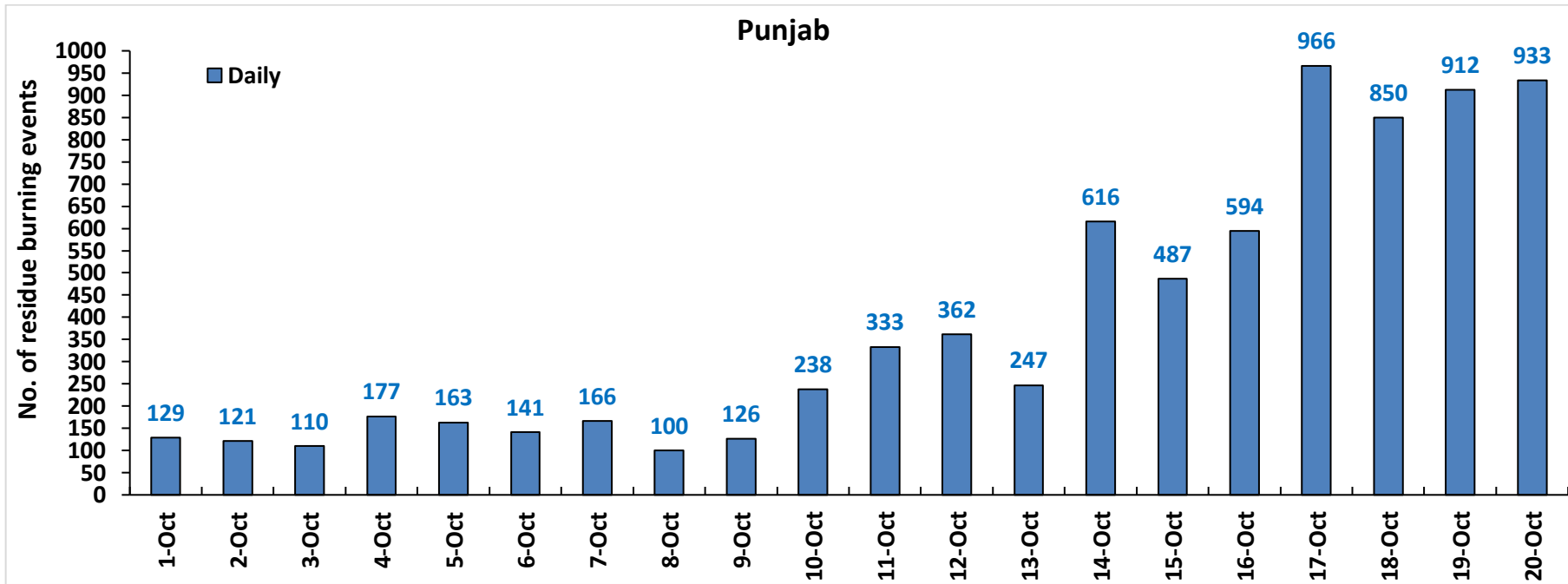
Highlights for 20-October-2020

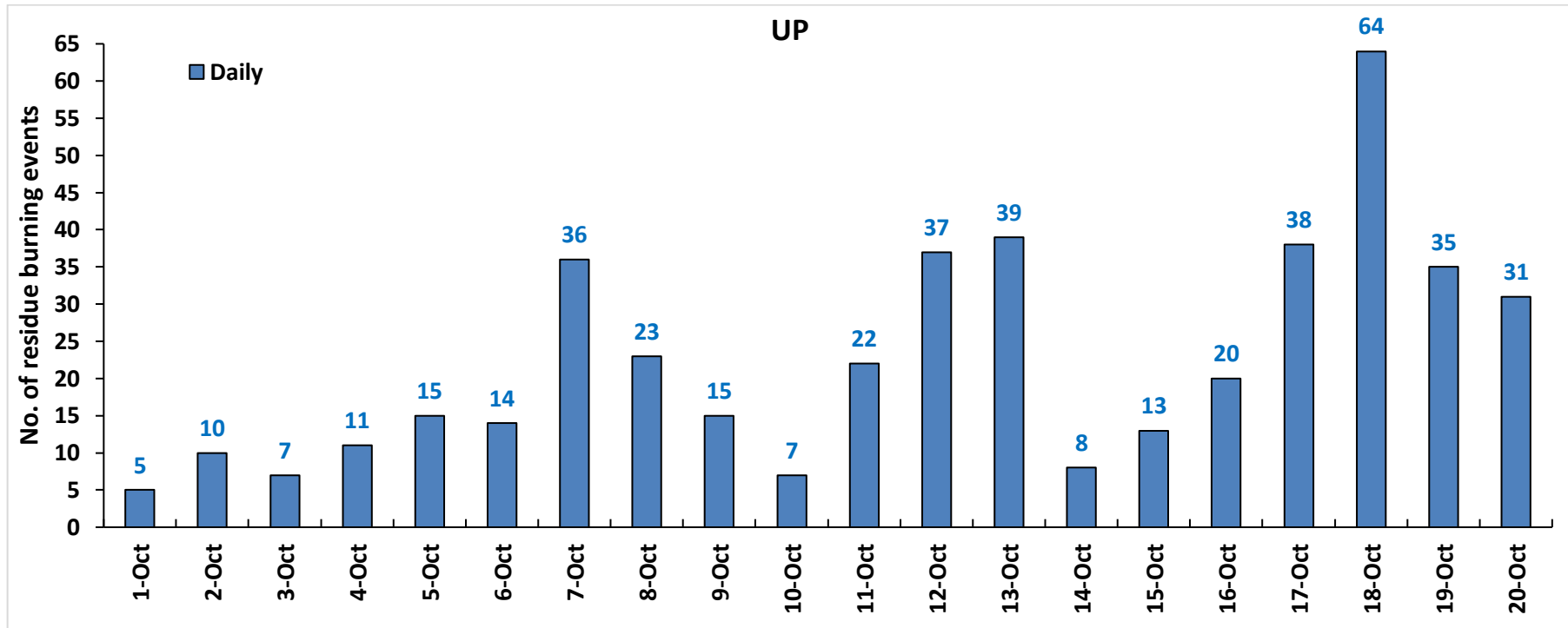
- Satellites detected **1068** residue burning events in the three study States on 20-Oct-2020.
- The state wise events detected on **20-Oct-2020** were **933** in Punjab, **104** in Haryana and **31** in UP.
- The number of events has increased from **1014** on **19-Oct-2020** to **1068** on **20-Oct-2020** in the three states.
- Tarn Taran in Punjab, Karnal in Haryana and Ferozabad in UP reported the highest number of events on **20-Oct-2020**.
- Total **9722** burning events were detected in the three States between **01-Oct-2020** and **20-Oct-2020**, which are distributed as **7771**, **1501** and **450** in Punjab, Haryana and UP, respectively.
- In Haryana and UP, the cumulative number of burning events between **1-Oct** and **20-Oct 2020** were lower than in **2019**, while in Punjab the cumulative number of events were more than in **2019**.

[S-NPP \(VIIRS\) Satellite image of North India Acquired on 20-Oct-2020 at 12:36 by IARI Ground Station](#)



Temporal distribution of residue burning events for the three study States in 2020

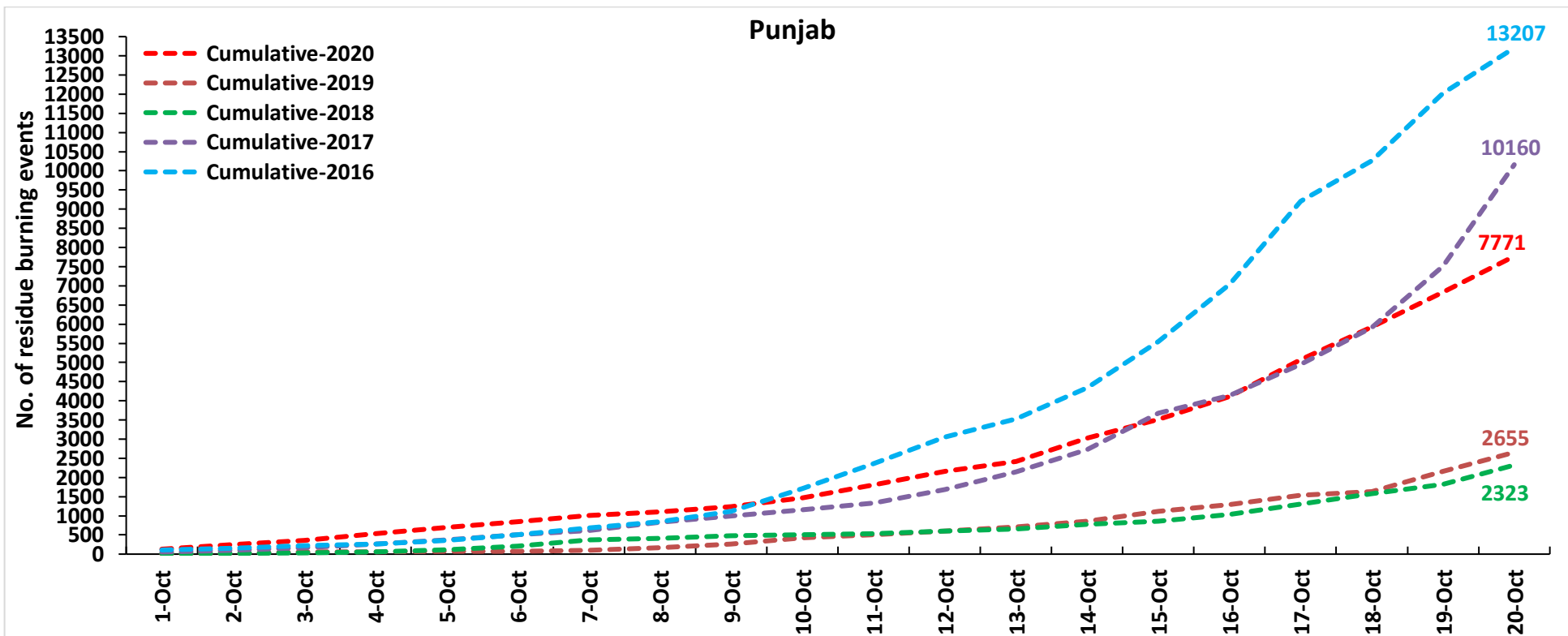


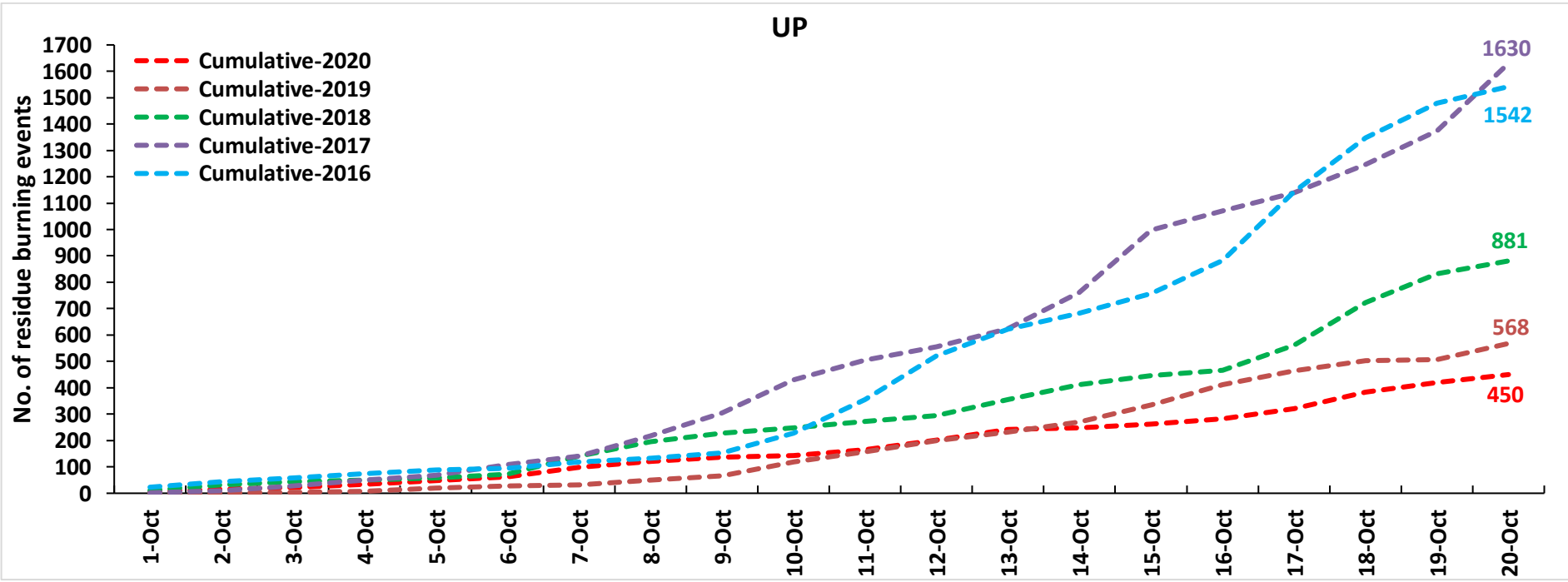
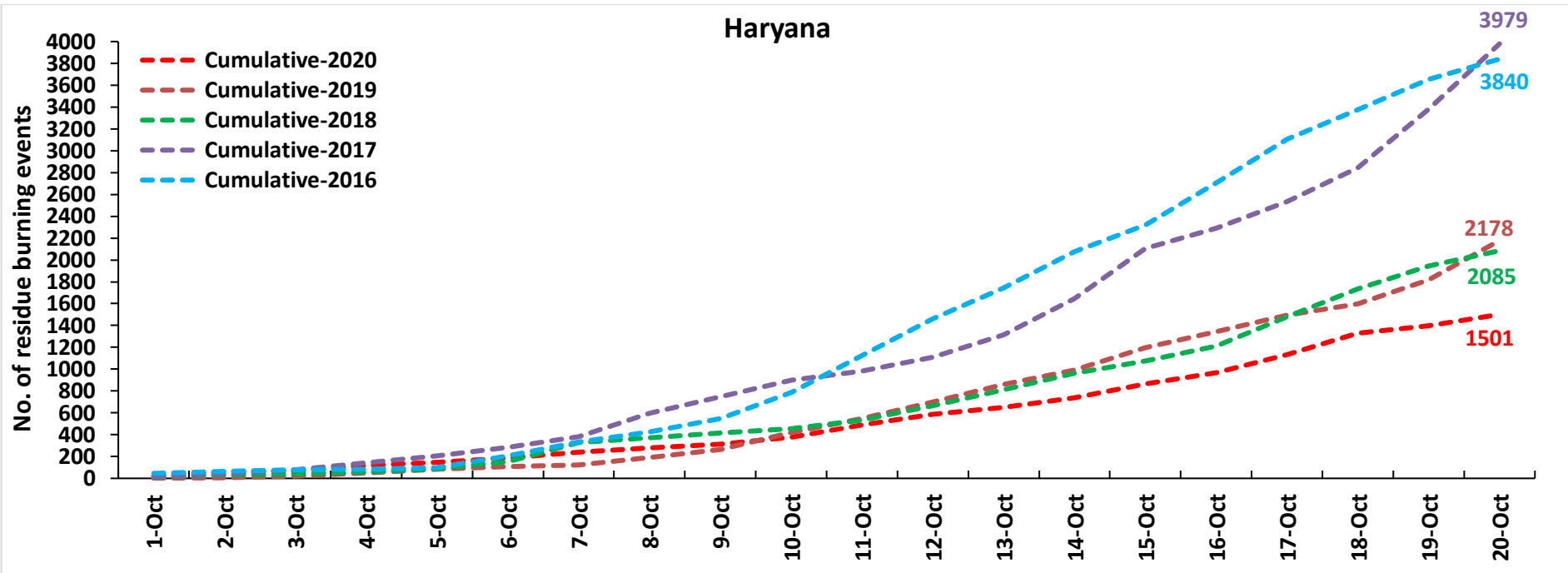


Comparison of residue burning events in current year (2020) with previous years (2019, 2018, 2017 & 2016) for the three study States

(01-Oct to 20-Oct)

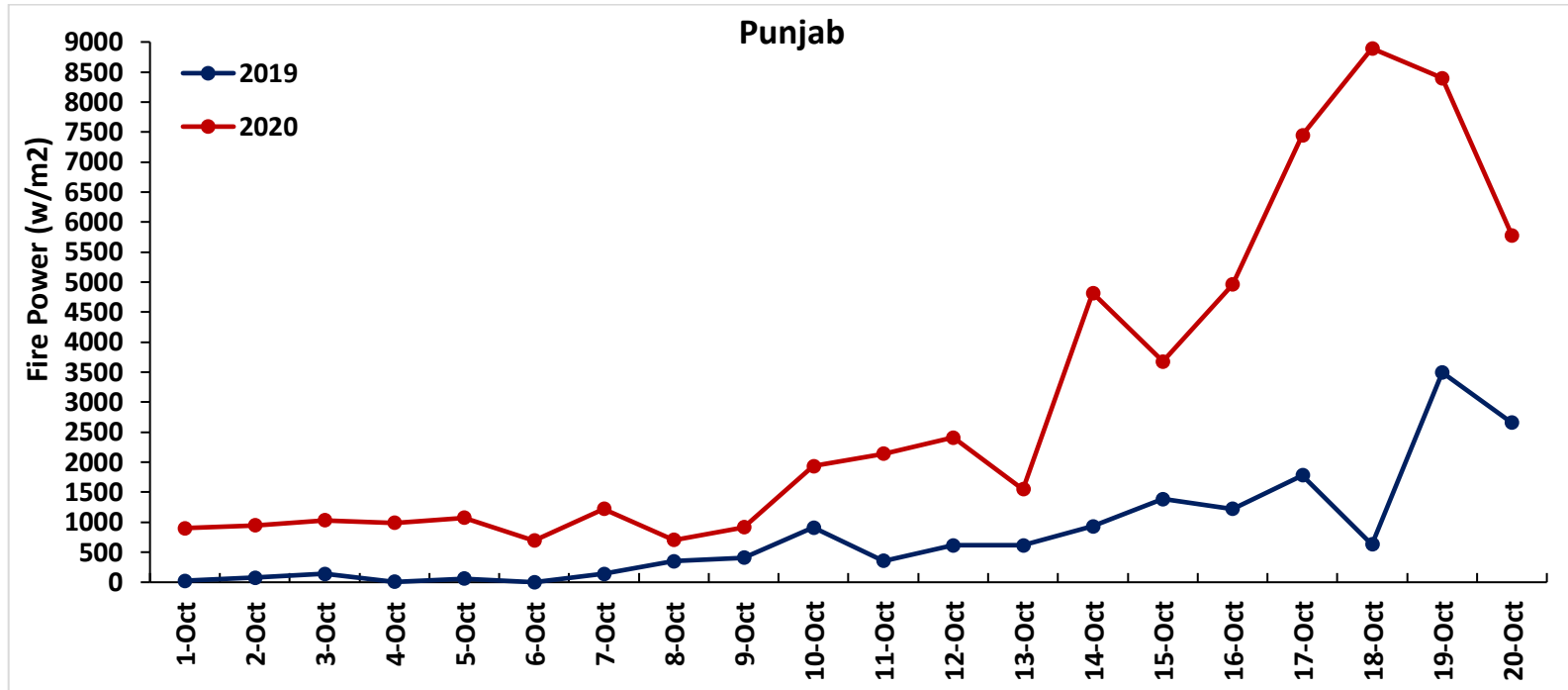
Punjab

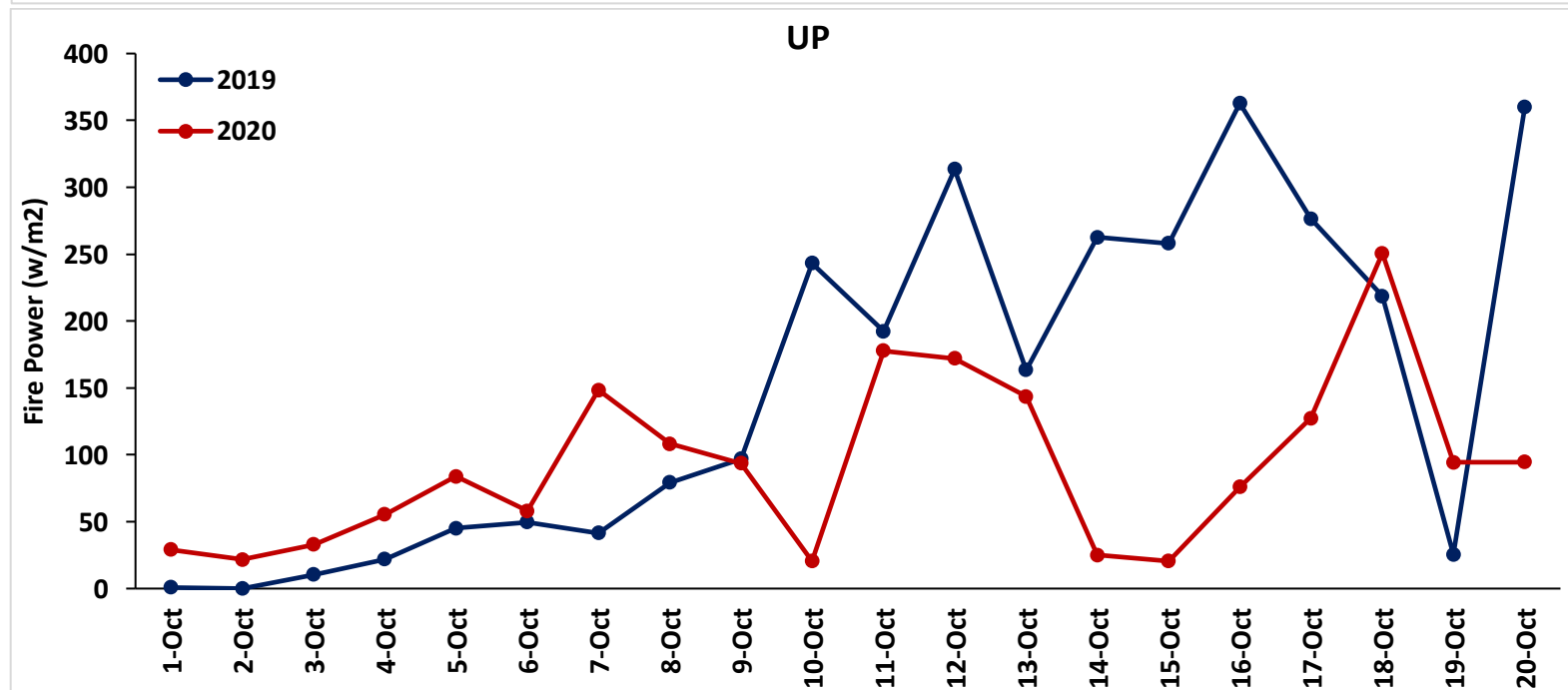
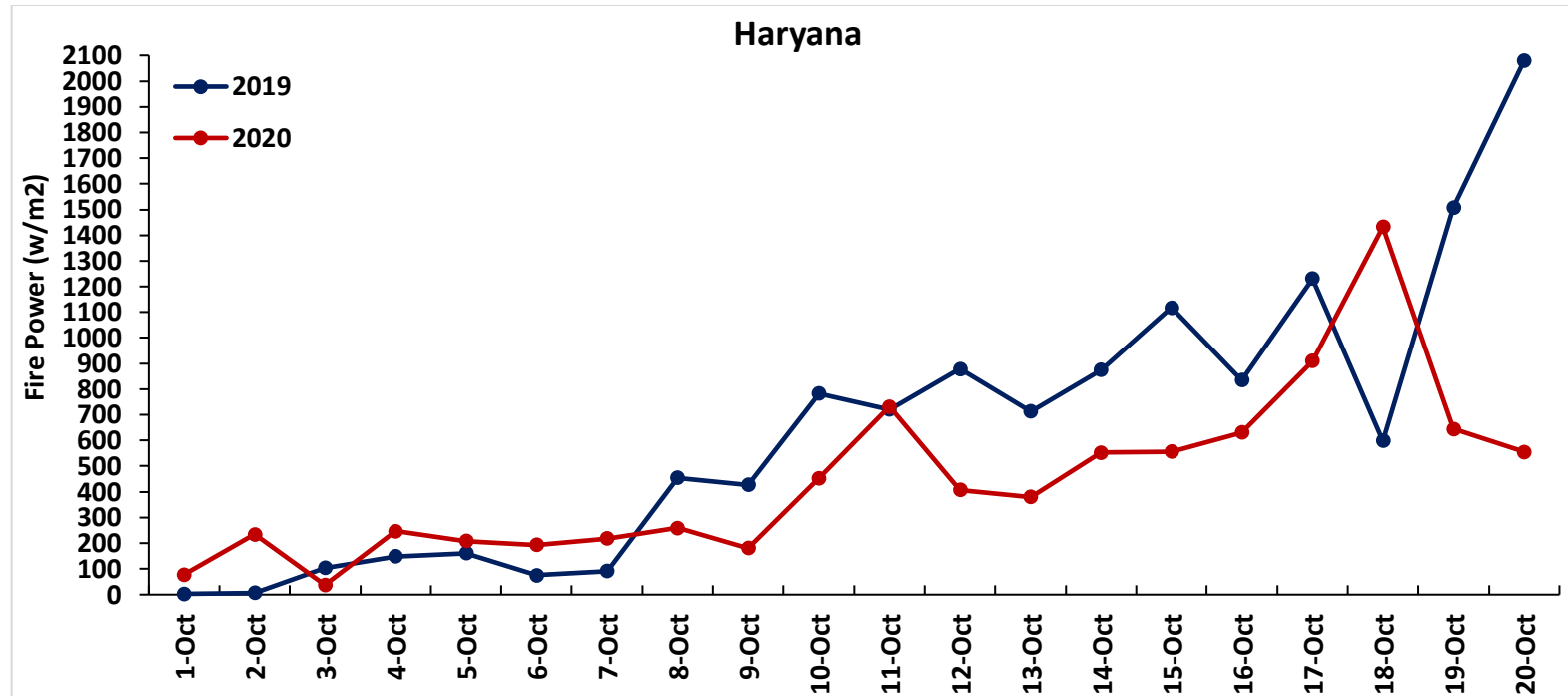




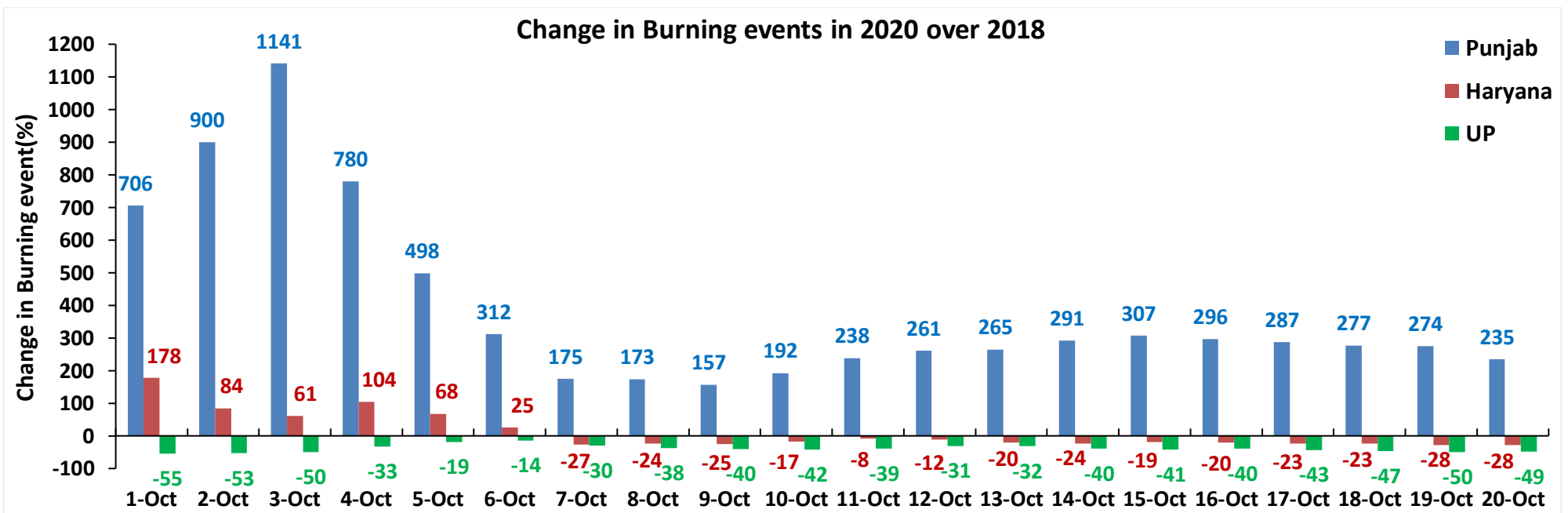
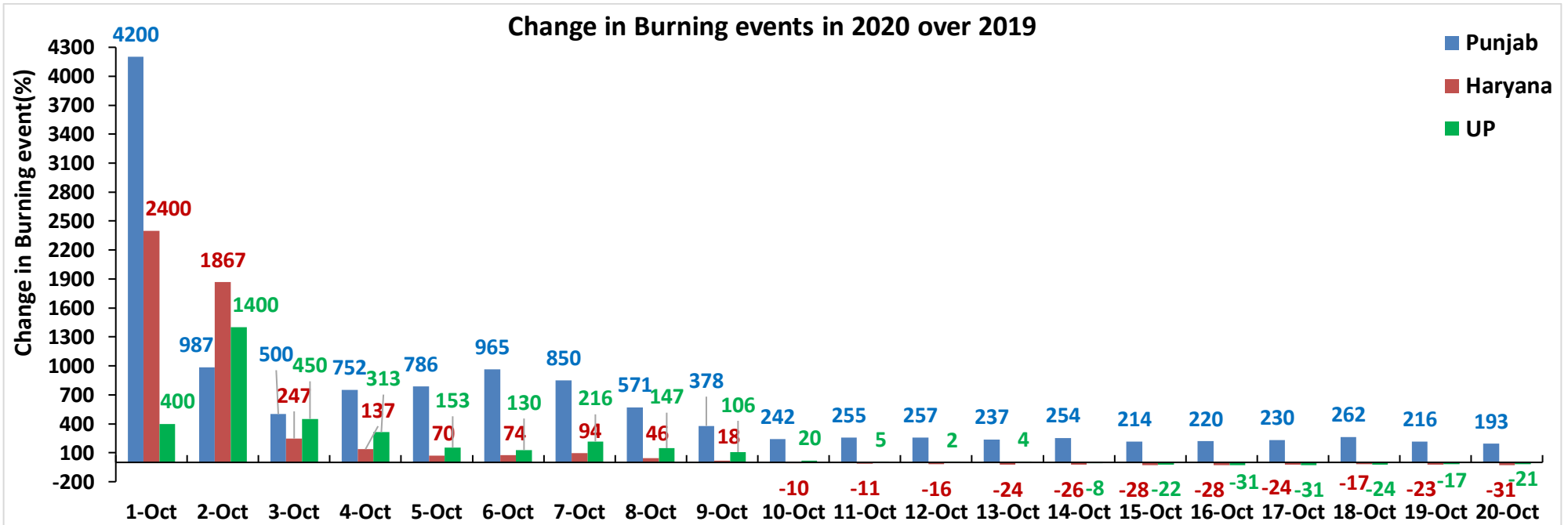
Comparison of Fire Intensity of residue burning events in current year (2020) with previous years (2019, 2018, 2017 & 2016)
For the three study States

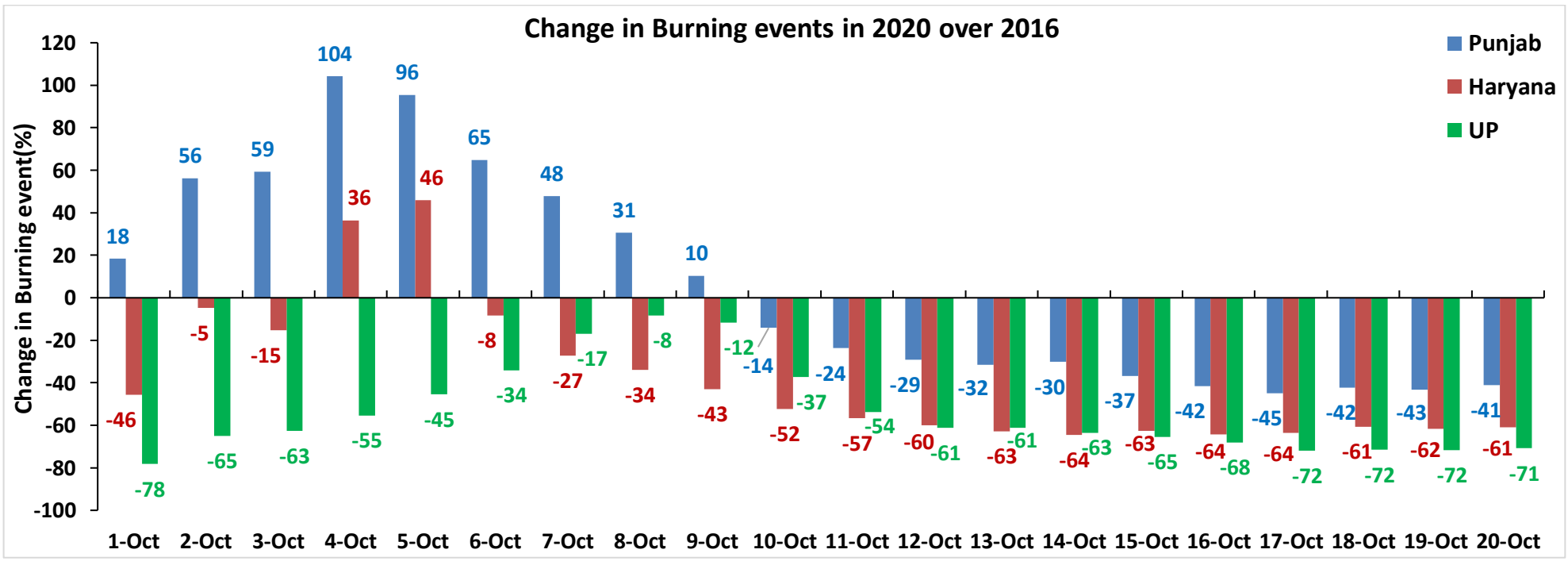
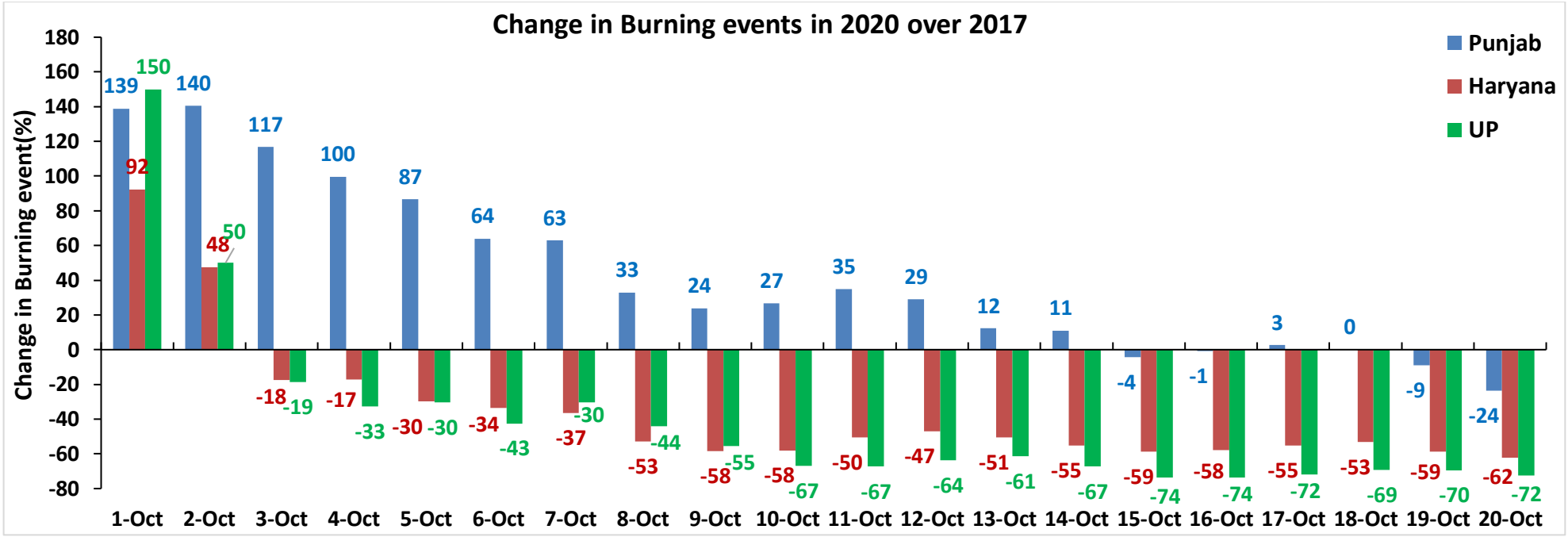
(01-Oct to 20-Oct)





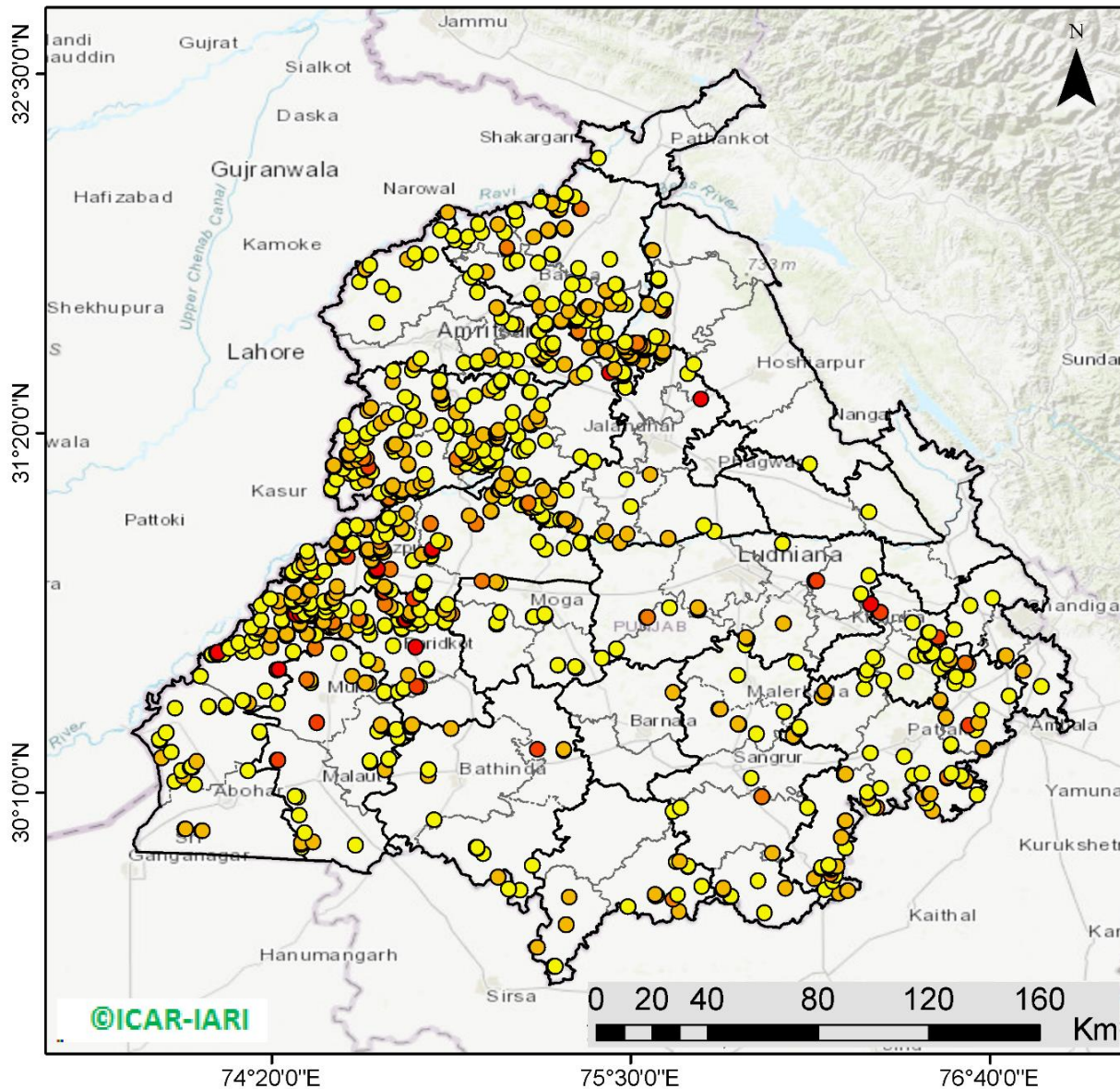
Percent Change in Burning events in 2020 over 2019, 2018, 2017 and 2016 (Daily Cumulative)





(a) Punjab

RICE RESIDUE BURNING IN PUNJAB



933 burning events detected in Punjab on 20th October 2020

Fire Intensity (W/m²)

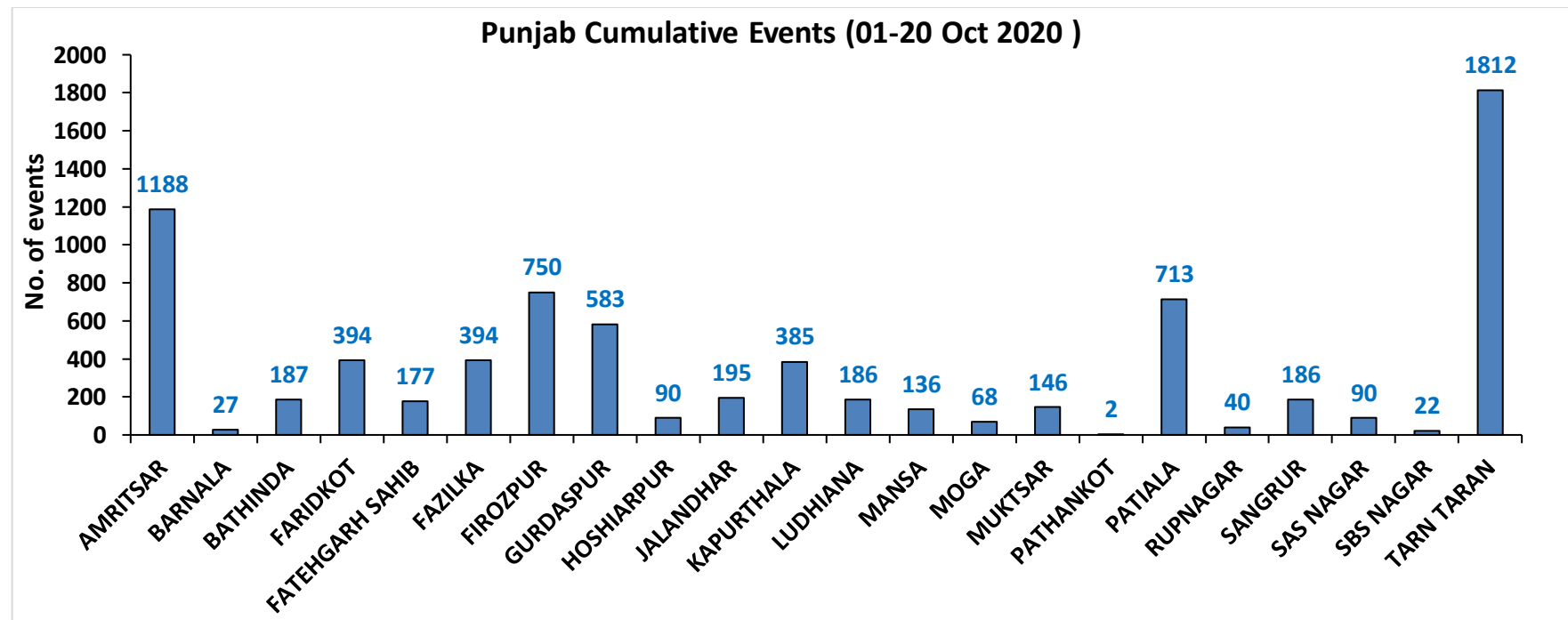
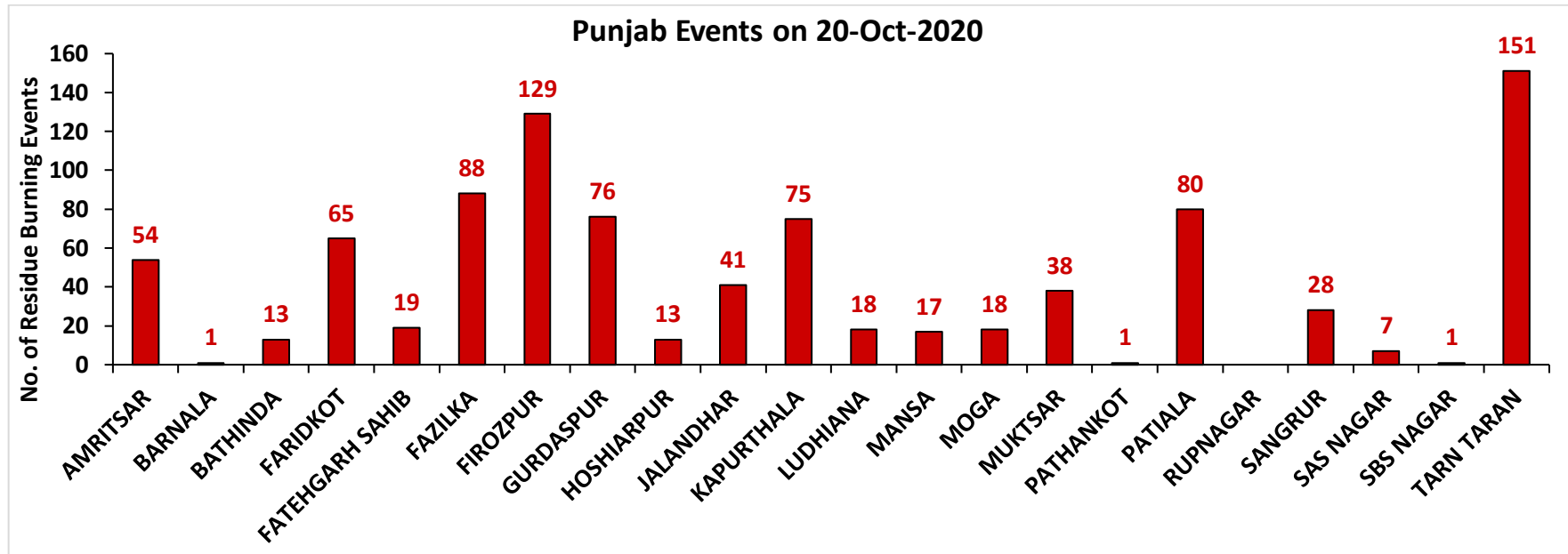
- 0 - 5
- 6 - 10
- 11 - 15
- 16 - 20
- >20

©ICAR-IARI



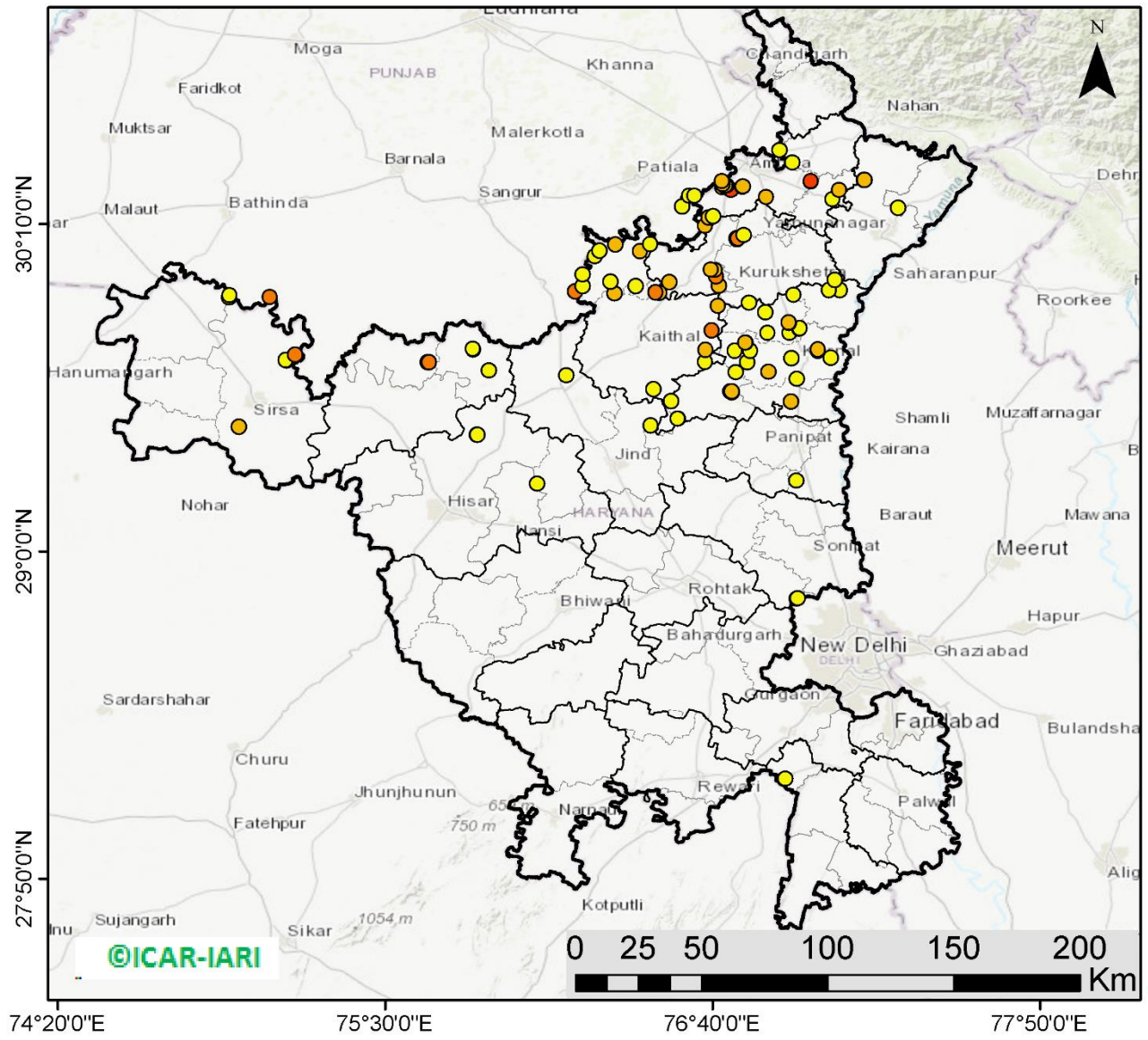
<http://geoportal.icar.gov.in:8080/geoexplorer/composer/>

District-wise number of residue burning events in Punjab (01-20 Oct 2020)



(b) Haryana

RICE RESIDUE BURNING IN HARYANA



104 burning events detected in Haryana on 20th October 2020

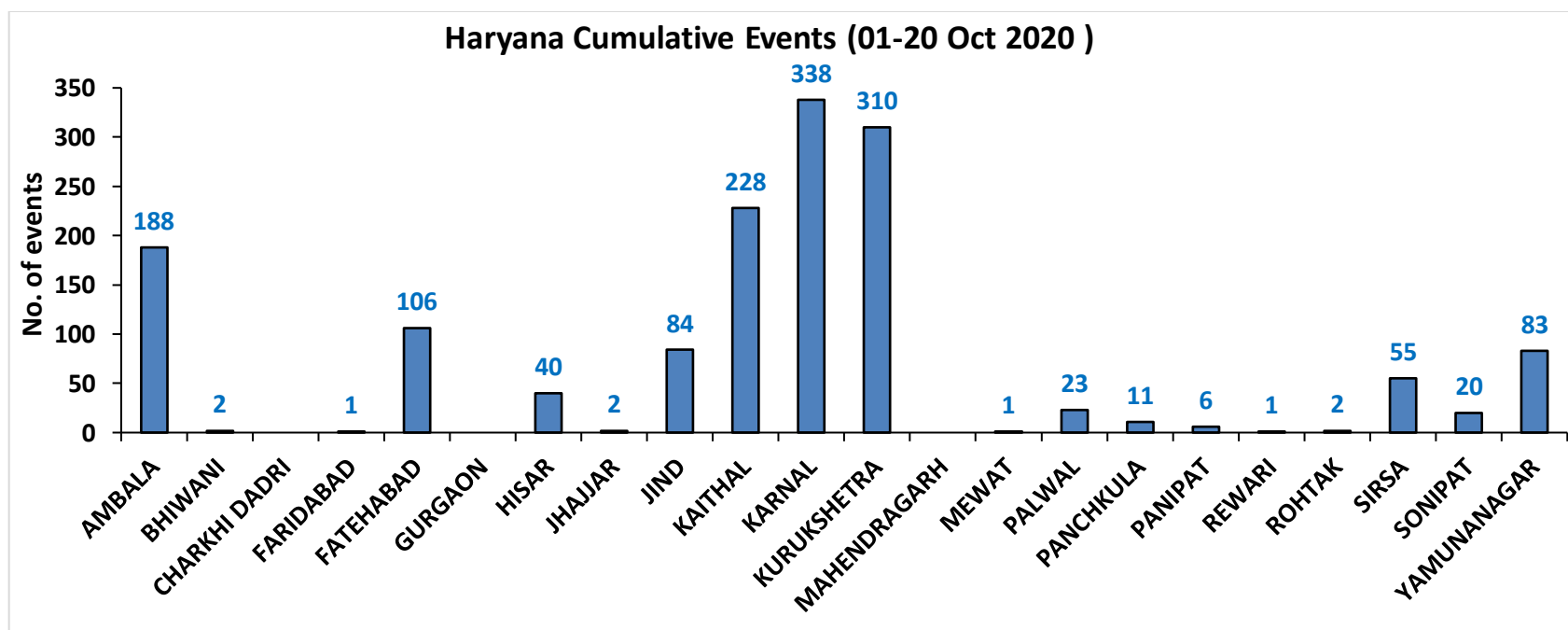
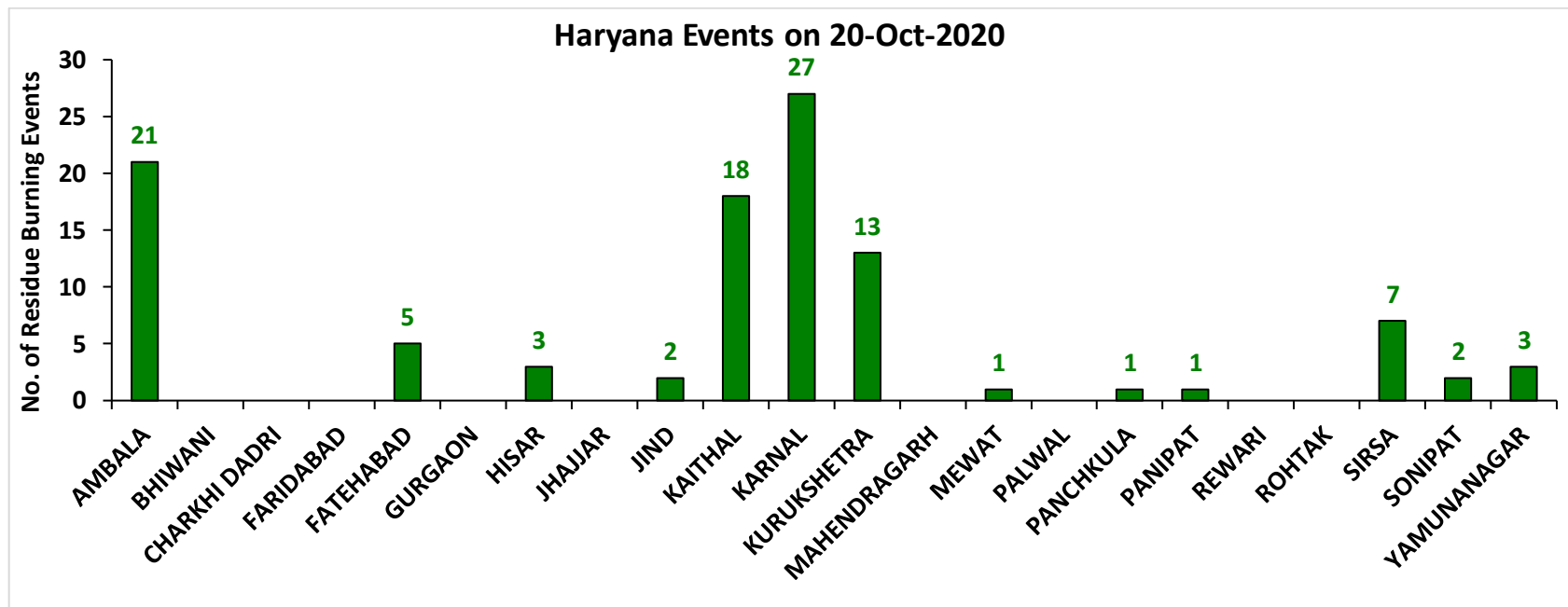
Fire Intensity (W/m²)

- 0 - 5
- 6 - 10
- 11 - 15
- 16 - 20
- >20



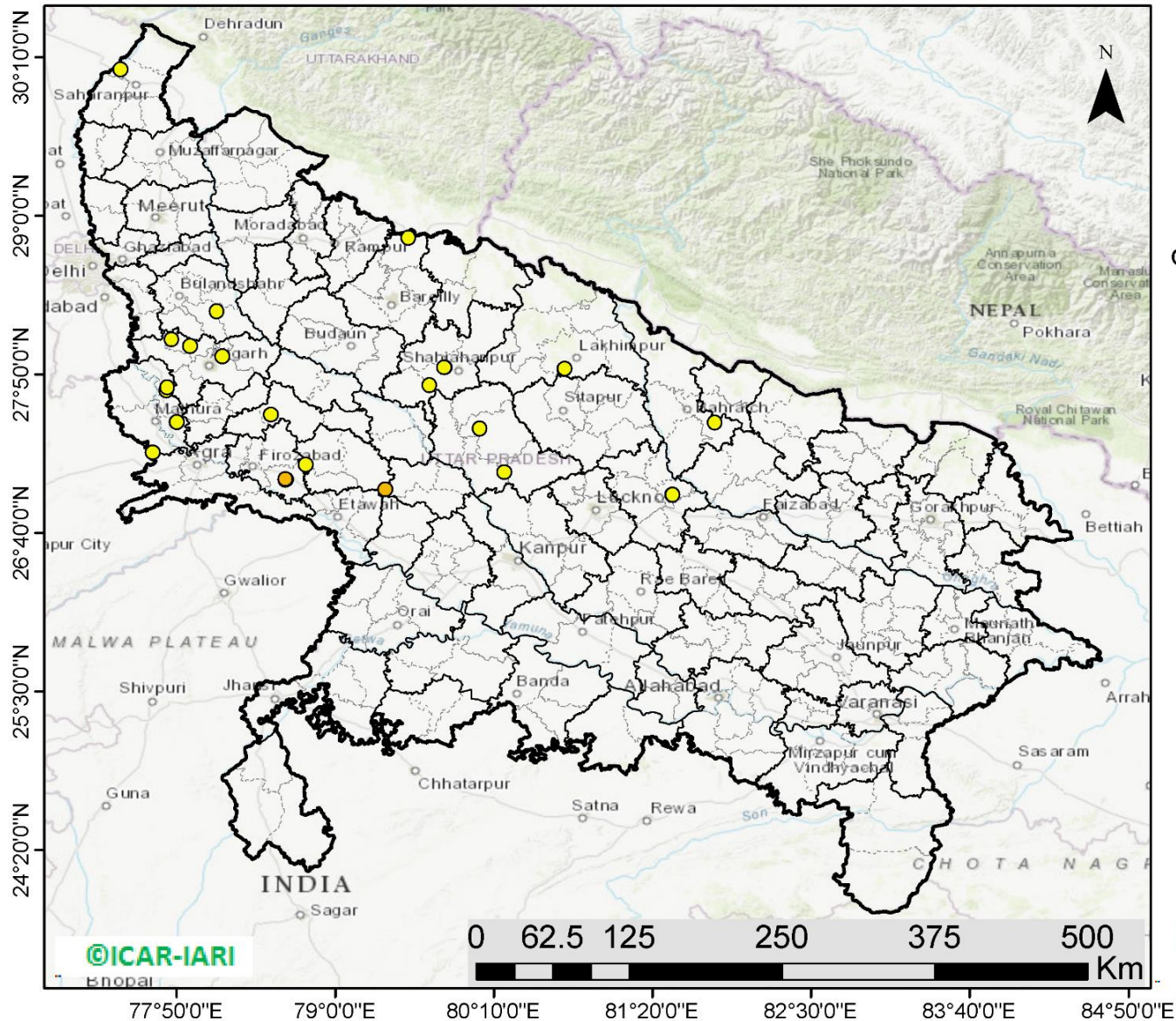
<http://geoportal.icar.gov.in:8080/geoexplorer/composer/>

District-wise number of residue burning events in Haryana (01-20 Oct 2020)



(c) Uttar Pradesh

RICE RESIDUE BURNING IN UTTAR PRADESH



31 burning events detected in Uttar Pradesh on 20th October 2020

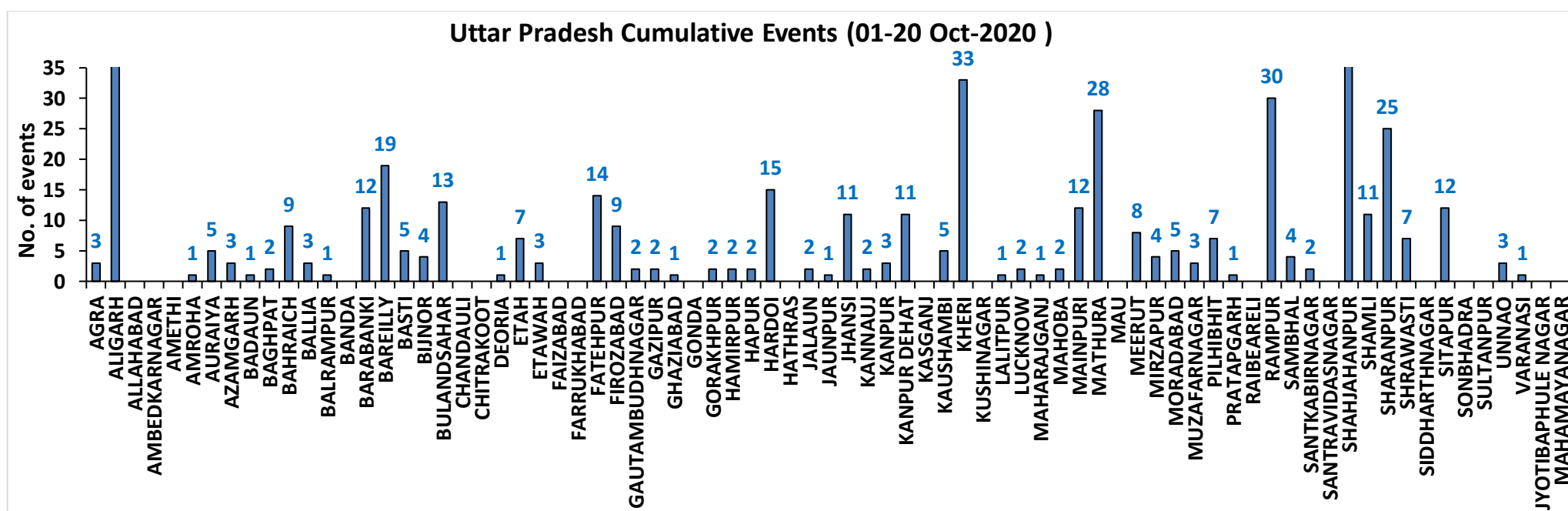
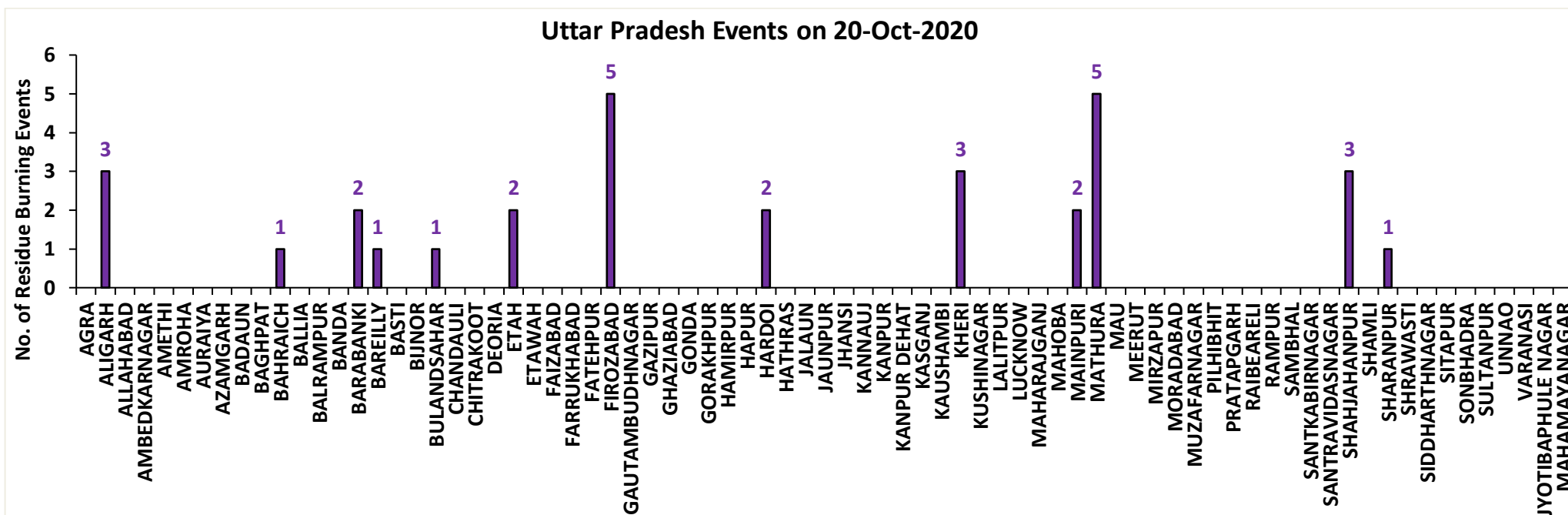
Fire Intensity (W/m²)

- 0 - 5
- 6 - 10
- 11 - 15
- 16 - 20
- >20



<http://geoportal.icar.gov.in:8080/geoexplorer/composer/>

District-wise number of residue burning events in Uttar Pradesh (01-20 Oct 2020)



State-wise and date-wise number of residue burning events detected in 2016, 2017, 2018, 2019 and 2020
(Period: 01-20 October)

Date	Punjab					Haryana					UP					Total				
	2020	2019	2018	2017	2016	2020	2019	2018	2017	2016	2020	2019	2018	2017	2016	2020	2019	2018	2017	2016
01-Oct	129	3	16	54	109	25	1	9	13	46	5	1	11	2	23	159	5	36	69	178
02-Oct	121	20	9	50	51	34	2	23	27	16	10	0	21	8	20	165	22	53	85	87
03-Oct	110	37	4	62	66	07	16	9	40	16	07	3	12	17	16	124	56	25	119	98
04-Oct	177	3	32	103	37	50	30	16	60	7	11	4	5	22	15	238	37	53	185	59
05-Oct	163	16	56	106	95	30	37	30	68	15	15	11	10	20	14	208	64	96	194	124
06-Oct	141	0	87	138	152	42	22	63	75	105	14	8	13	39	6	197	30	163	252	263
07-Oct	166	27	162	105	171	53	16	180	97	126	36	4	69	33	24	255	47	411	235	321
08-Oct	100	59	39	215	166	40	69	40	218	94	23	18	54	76	14	163	146	133	509	274
09-Oct	126	93	75	163	270	30	70	47	148	121	15	17	32	88	22	171	180	154	399	413
10-Oct	238	172	23	164	597	65	157	37	151	242	07	53	21	126	74	310	382	81	441	913
11-Oct	333	78	30	177	652	112	126	78	87	336	22	38	24	74	128	467	242	132	338	1116
12-Oct	362	99	67	342	694	98	154	133	123	338	37	42	22	51	164	497	295	222	516	1196
13-Oct	247	108	62	470	467	64	159	147	207	284	39	33	61	69	102	350	300	270	746	853
14-Oct	616	141	112	582	812	87	133	153	333	328	08	39	57	137	60	711	313	322	1052	1200
15-Oct	487	262	90	943	1215	129	203	110	458	248	13	63	35	237	76	629	528	235	1638	1539
16-Oct	594	168	174	465	1478	100	148	138	186	385	20	77	20	71	125	714	393	332	722	1988
17-Oct	966	250	272	807	2173	167	152	268	244	399	38	53	94	69	261	1171	455	634	1120	2833
18-Oct	850	100	263	970	1065	197	103	255	306	270	64	39	163	108	204	1111	242	681	1384	1539
19-Oct	912	529	254	1591	1762	67	220	208	541	276	35	3	108	128	132	1014	752	570	2260	2170
20-Oct	933	490	496	2653	1175	104	360	141	597	188	31	62	49	255	62	1068	912	686	3505	1425
Total	7771	2655	2323	10160	13207	1501	2178	2085	3979	3840	450	568	881	1630	1542	9722	5401	5289	15769	18589

District-wise and date-wise cumulative number of residue burning events detected in 2016, 2017, 2018, 2019 and 2020
(Period: 01-20 October)

(a) Punjab

Districts	01-20 Oct				
	2016	2017	2018	2019	2020
AMRITSAR	948	788	541	459	1188
BARNALA	38	35	13	10	27
BATHINDA	832	751	74	42	187
FARIDKOT	1005	1141	133	121	394
FATEHGARH SAHIB	748	427	55	56	177
FAZILKA	0	0	0	89	394
FIROZPUR	1488	1333	233	212	750
GURDASPUR	608	394	89	166	583
HOSHIARPUR	131	79	4	20	90
JALANDHAR	855	412	30	104	195
KAPURTHALA	756	253	9	82	385
LUDHIANA	653	614	60	29	186
MANSA	174	221	62	74	136
MOGA	188	161	19	25	68
MUKTSAR	1124	617	84	50	146
PATHANKOT	0	0	0	0	2
PATIALA	1094	1060	309	354	713
RUPNAGAR	160	46	1	4	40
SANGRUR	266	282	110	67	186
SAS NAGAR	71	73	47	39	90
SBS NAGAR	268	179	27	35	22
TARN TARAN	1800	1294	423	617	1812
Total	13207	10160	2323	2655	7771

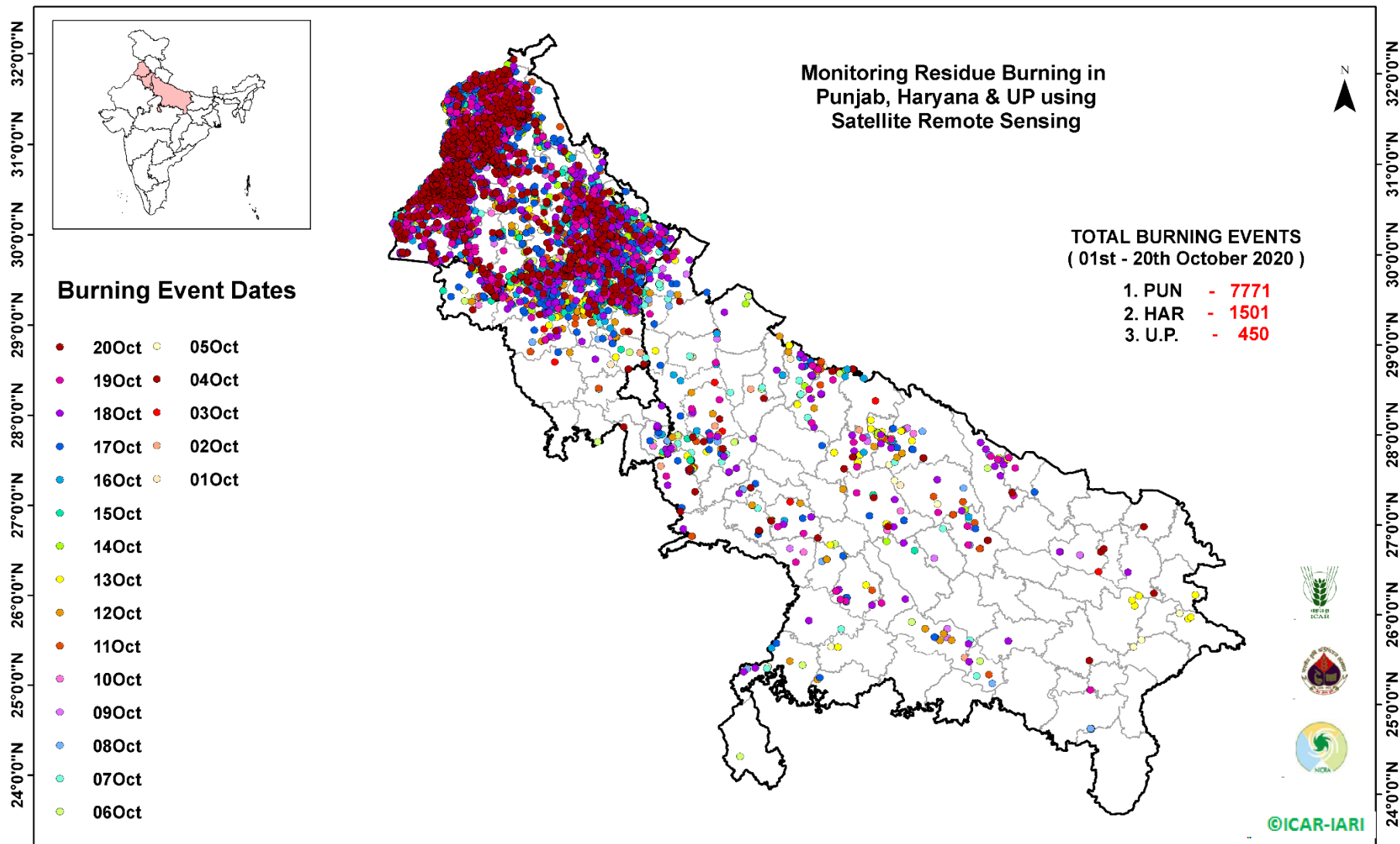
(b) Haryana

Districts	01-20 Oct				
	2016	2017	2018	2019	2020
AMBALA	251	248	62	121	188
BHIWANI	2	2	3	0	2
CHARKHI DADRI	0	0	0	0	0
FARIDABAD	30	92	66	4	1
FATEHABAD	223	336	118	155	106
GURGAON	0	0	0	0	0
HISAR	32	33	15	21	40
JHAJJAR	4	3	5	2	2
JIND	126	176	87	89	84
KAITHAL	1034	872	612	564	228
KARNAL	1121	1055	549	555	338
KURUKSHETRA	779	854	442	456	310
MAHENDRAGARH	0	0	0	1	0
MEWAT	0	0	0	0	1
PALWAL	0	0	0	78	23
PANCHKULA	0	0	3	16	11
PANIPAT	28	40	33	6	6
REWARI	0	0	0	1	1
ROHTAK	3	3	0	0	2
SIRSA	109	97	30	26	55
SONIPAT	9	18	11	3	20
YAMUNANAGAR	89	150	49	80	83
Total	3840	3979	2085	2178	1501

(C)
Uttar Pradesh

Districts	01-20 Oct																
	2016	2017	2018	2019	2020	GAUTAMBUDHNAGAR	3	2	1	1	2	MUZAFARNAGAR	11	11	5	2	3
AGRA	0	0	0	0	3	GAZIPUR	4	4	4	0	2	PILHIBHIT	43	49	18	6	7
ALIGARH	10	17	17	21	36	GHAZIABAD	0	0	0	1	1	PRATAPGARH	310	298	130	133	1
ALLAHABAD	0	0	3	0	0	GONDA	8	5	3	6	0	RAIBEARELI	0	0	2	0	0
AMBEDKARNAGAR	0	1	0	0	0	GORAKHPUR	0	0	0	0	2	RAMPUR	0	0	0	0	30
AMETHI	0	0	0	0	0	HAMIRPUR	0	2	5	0	2	SAMBHAL	281	274	67	86	4
AMROHA	0	0	0	0	1	HAPUR	0	0	1	0	2	SANTKABIRNAGAR	22	32	13	14	2
AURAIYA	50	52	17	1	5	HARDOI	0	0	0	2	15	SANTRAVIDASNAGAR	0	0	0	2	0
AZAMGARH	0	0	0	0	3	HATHRAS	16	16	7	1	0	SHAHJAHANPUR	0	0	0	0	36
BADAUN	0	1	0	0	1	JALAUN	0	0	0	0	2	SHAMLI	388	415	104	70	11
BAGHPAT	0	0	0	2	2	JAUNPUR	0	0	0	0	1	SHARANPUR	0	0	0	12	25
BAHRAICH	0	2	6	0	9	JHANSI	1	0	3	0	11	SHRAWASTI	0	3	2	1	7
BALLIA	0	0	0	1	3	KANNAUJ	0	0	2	2	2	SIDDHARTHANAGAR	1	1	1	0	0
BALRAMPUR	0	0	1	0	1	KANPUR	0	1	2	1	3	SITAPUR	24	14	9	3	12
BANDA	1	0	1	0	0	KANPUR DEHAT	1	3	0	0	11	SONBHADRA	5	1	7	0	0
BARABANKI	45	30	62	5	12	KASGANJ	0	1	0	0	0	SULTANPUR	0	0	0	0	0
BAREILLY	80	64	19	28	19	KAUSHAMBI	0	0	0	0	5	UNNAO	3	4	4	3	3
BASTI	0	0	0	0	5	KHERI	0	4	9	1	33	VARANASI	0	0	0	0	1
BIJNOR	0	0	0	0	4	KUSHINAGAR	137	119	64	50	0	JYOTIBAPHULE NAGAR	1	0	1	0	0
BULANDSAHAR	5	2	1	1	13	LALITPUR	0	1	0	0	1	MAHAMAYANAGAR	0	1	1	0	0
CHANDAULI	3	9	7	5	0	LUCKNOW	0	0	0	0	2	Total	1542	1630	881	568	450
CHITRAKOOT	0	0	0	0	0	MAHARAJGANJ	7	5	0	1	1						
DEORIA	0	0	0	0	1	MAHOBA	3	22	25	1	2						
ETAH	0	0	0	0	7	MAINPURI	0	0	0	0	12						
ETAWAH	0	12	11	0	3	MATHURA	0	8	4	3	28						
FAIZABAD	3	10	2	0	0	MAU	51	113	220	92	0						
FARRUKHABAD	1	1	1	0	0	MEERUT	1	0	2	0	8						
FATEHPUR	0	0	0	1	14	MIRZAPUR	18	11	3	5	4						
FIROZABAD	5	7	10	1	9	MORADABAD	0	2	4	3	5						

Map of Cumulative Burning Events (01-20 Oct 2020)



[\(http://geoportal.icar.gov.in:8080/geoexplorer/composer/\)](http://geoportal.icar.gov.in:8080/geoexplorer/composer/)

Details of residue burning events in Punjab on 20-Oct-2020

S. No.	District	Tehsil / Block	Satellite	Longitude	Latitude	Time (IST)	Day / Night	Fire Power (W/m2)
1	AMRITSAR	AJNALA	S-NPP	74.67566	31.69144	14:12:00	D	3.20
2	AMRITSAR	AJNALA	S-NPP	74.72965	31.78354	14:12:00	D	3.10
3	AMRITSAR	AJNALA	S-NPP	74.69167	31.80801	14:12:00	D	2.60
4	AMRITSAR	AJNALA	S-NPP	74.61890	31.82443	14:12:00	D	2.00
5	AMRITSAR	AJNALA	S-NPP	74.63905	31.86370	14:12:00	D	4.90
6	AMRITSAR	AJNALA	S-NPP	74.63869	31.86620	14:12:00	D	5.80
7	AMRITSAR	AJNALA	S-NPP	74.65347	31.87802	14:12:00	D	2.00
8	AMRITSAR	AJNALA	S-NPP	74.80089	31.88804	14:12:00	D	3.00
9	AMRITSAR	AJNALA	S-NPP	74.77583	31.89724	14:12:00	D	7.90
10	AMRITSAR	AJNALA	TERRA	74.85000	31.91300	11:20:00	D	3.90
11	AMRITSAR	AJNALA	S-NPP	74.79848	31.91515	14:12:00	D	2.70
12	AMRITSAR	AJNALA	S-NPP	74.93105	31.95902	12:36:00	D	4.70
13	AMRITSAR	AJNALA	S-NPP	74.97303	31.97073	12:36:00	D	3.80
14	AMRITSAR	AJNALA	S-NPP	74.88272	31.99273	14:12:00	D	4.00
15	AMRITSAR	AJNALA	S-NPP	74.90664	32.04925	14:12:00	D	6.30
16	AMRITSAR	AMRITSAR I	S-NPP	75.00239	31.55935	14:12:00	D	1.10
17	AMRITSAR	AMRITSAR I	S-NPP	75.00191	31.56483	14:12:00	D	1.60
18	AMRITSAR	AMRITSAR I	S-NPP	75.08848	31.57049	14:12:00	D	3.70
19	AMRITSAR	AMRITSAR I	S-NPP	75.09123	31.57094	14:12:00	D	3.50
20	AMRITSAR	AMRITSAR I	S-NPP	75.04527	31.57316	14:12:00	D	5.30
21	AMRITSAR	AMRITSAR I	S-NPP	75.04661	31.57327	14:12:00	D	4.50
22	AMRITSAR	AMRITSAR I	S-NPP	75.04153	31.58396	14:12:00	D	6.20
23	AMRITSAR	AMRITSAR I	TERRA	75.11600	31.68700	11:20:00	D	4.70
24	AMRITSAR	AMRITSAR I	S-NPP	75.08087	31.70829	14:12:00	D	3.40
25	AMRITSAR	AMRITSAR I	S-NPP	75.06797	31.73969	12:36:00	D	5.20
26	AMRITSAR	AMRITSAR I	S-NPP	75.06516	31.73985	12:36:00	D	6.20
27	AMRITSAR	AMRITSAR I	S-NPP	75.00187	31.79093	14:12:00	D	3.00
28	AMRITSAR	AMRITSAR II	S-NPP	74.95987	31.56148	14:12:00	D	1.40
29	AMRITSAR	AMRITSAR II	S-NPP	74.81796	31.57436	14:12:00	D	2.50
30	AMRITSAR	BABA BAKALA	S-NPP	75.14629	31.51386	14:12:00	D	2.00

31	AMRITSAR	BABA BAKALA	S-NPP	75.23581	31.55332	14:12:00	D	2.30
32	AMRITSAR	BABA BAKALA	S-NPP	75.28671	31.55682	14:12:00	D	6.90
33	AMRITSAR	BABA BAKALA	S-NPP	75.13055	31.56768	14:12:00	D	2.80
34	AMRITSAR	BABA BAKALA	S-NPP	75.20443	31.57342	14:12:00	D	6.30
35	AMRITSAR	BABA BAKALA	S-NPP	75.20137	31.57779	14:12:00	D	7.50
36	AMRITSAR	BABA BAKALA	S-NPP	75.20395	31.57896	14:12:00	D	6.30
37	AMRITSAR	BABA BAKALA	S-NPP	75.21355	31.58413	14:12:00	D	4.90
38	AMRITSAR	BABA BAKALA	S-NPP	75.21615	31.58539	14:12:00	D	5.10
39	AMRITSAR	BABA BAKALA	S-NPP	75.22948	31.59631	14:12:00	D	3.30
40	AMRITSAR	BABA BAKALA	S-NPP	75.18262	31.59881	14:12:00	D	3.80
41	AMRITSAR	BABA BAKALA	S-NPP	75.24123	31.60823	14:12:00	D	7.50
42	AMRITSAR	BABA BAKALA	S-NPP	75.24546	31.60851	14:12:00	D	11.50
43	AMRITSAR	BABA BAKALA	S-NPP	75.36581	31.61070	14:12:00	D	6.10
44	AMRITSAR	BABA BAKALA	S-NPP	75.24451	31.61961	14:12:00	D	4.00
45	AMRITSAR	BABA BAKALA	S-NPP	75.21864	31.62346	14:12:00	D	3.30
46	AMRITSAR	BABA BAKALA	TERRA	75.22800	31.62400	11:20:00	D	4.90
47	AMRITSAR	BABA BAKALA	S-NPP	75.24827	31.62543	14:12:00	D	3.50
48	AMRITSAR	BABA BAKALA	S-NPP	75.19798	31.66663	14:12:00	D	3.90
49	AMRITSAR	BABA BAKALA	S-NPP	75.20220	31.66692	14:12:00	D	3.90
50	AMRITSAR	BABA BAKALA	S-NPP	75.22655	31.68444	14:12:00	D	2.90
51	AMRITSAR	BABA BAKALA	S-NPP	75.22617	31.68531	14:12:00	D	2.90
52	AMRITSAR	BABA BAKALA	TERRA	75.12700	31.68600	11:20:00	D	5.90
53	AMRITSAR	BABA BAKALA	S-NPP	75.22183	31.68972	14:12:00	D	2.90
54	AMRITSAR	BABA BAKALA	S-NPP	75.27383	31.69439	12:36:00	D	9.70
55	BARNALA	BARNALA	S-NPP	75.63853	30.49213	14:12:00	D	5.30
56	BATHINDA	BATHINDA	S-NPP	74.86095	30.07743	14:12:00	D	3.00
57	BATHINDA	BATHINDA	S-NPP	74.84198	30.21955	14:12:00	D	6.00
58	BATHINDA	BATHINDA	S-NPP	74.84382	30.24121	14:12:00	D	2.60
59	BATHINDA	RAMPURA PHUL	S-NPP	75.28365	30.30117	14:12:00	D	4.70
60	BATHINDA	RAMPURA PHUL	S-NPP	75.19759	30.30582	14:12:00	D	19.40
61	BATHINDA	RAMPURA PHUL	S-NPP	75.28316	30.30666	14:12:00	D	5.30
62	BATHINDA	TALWANDI SABO	S-NPP	75.14092	29.84925	12:30:00	D	3.70
63	BATHINDA	TALWANDI SABO	S-NPP	75.10362	29.85318	12:30:00	D	2.50

64	BATHINDA	TALWANDI SABO	TERRA	75.06900	29.89200	11:20:00	D	7.30
65	BATHINDA	TALWANDI SABO	S-NPP	75.02175	29.96671	12:30:00	D	4.50
66	BATHINDA	TALWANDI SABO	S-NPP	75.00230	29.98544	14:12:00	D	2.70
67	BATHINDA	TALWANDI SABO	S-NPP	74.99802	29.98764	14:12:00	D	3.10
68	BATHINDA	TALWANDI SABO	S-NPP	75.00191	29.98792	14:12:00	D	4.60
69	FARIDKOT	FARIDKOT	S-NPP	74.74600	30.49325	14:12:00	D	3.10
70	FARIDKOT	FARIDKOT	S-NPP	74.76302	30.50300	14:12:00	D	2.80
71	FARIDKOT	FARIDKOT	S-NPP	74.76408	30.50540	14:12:00	D	3.30
72	FARIDKOT	FARIDKOT	S-NPP	74.80614	30.50870	14:12:00	D	2.50
73	FARIDKOT	FARIDKOT	S-NPP	74.80464	30.51136	14:12:00	D	15.30
74	FARIDKOT	FARIDKOT	S-NPP	74.77813	30.54709	14:12:00	D	8.60
75	FARIDKOT	FARIDKOT	S-NPP	74.83868	30.56237	14:12:00	D	7.60
76	FARIDKOT	FARIDKOT	S-NPP	74.83820	30.56773	14:12:00	D	3.10
77	FARIDKOT	FARIDKOT	S-NPP	74.67603	30.58137	12:36:00	D	7.50
78	FARIDKOT	FARIDKOT	AQUA	74.71100	30.58600	12:55:00	D	51.40
79	FARIDKOT	FARIDKOT	S-NPP	74.64745	30.59604	14:12:00	D	3.10
80	FARIDKOT	FARIDKOT	S-NPP	74.80235	30.63808	14:12:00	D	20.70
81	FARIDKOT	FARIDKOT	S-NPP	74.72852	30.64342	14:12:00	D	2.40
82	FARIDKOT	FARIDKOT	S-NPP	74.65316	30.67875	12:36:00	D	4.30
83	FARIDKOT	FARIDKOT	S-NPP	74.57439	30.68895	14:12:00	D	5.80
84	FARIDKOT	FARIDKOT	S-NPP	74.57578	30.69056	14:12:00	D	5.50
85	FARIDKOT	FARIDKOT	S-NPP	74.75700	30.69657	14:12:00	D	4.40
86	FARIDKOT	FARIDKOT	S-NPP	74.75806	30.69938	14:12:00	D	3.70
87	FARIDKOT	FARIDKOT	S-NPP	74.52437	30.70125	14:12:00	D	3.10
88	FARIDKOT	FARIDKOT	S-NPP	74.64667	30.70146	14:12:00	D	3.30
89	FARIDKOT	FARIDKOT	S-NPP	74.64491	30.70468	14:12:00	D	2.50
90	FARIDKOT	FARIDKOT	S-NPP	74.70358	30.70591	14:12:00	D	4.60
91	FARIDKOT	FARIDKOT	TERRA	74.52800	30.70600	11:20:00	D	8.90
92	FARIDKOT	FARIDKOT	TERRA	74.51800	30.70700	11:20:00	D	67.50
93	FARIDKOT	FARIDKOT	S-NPP	74.53878	30.70762	14:12:00	D	5.90
94	FARIDKOT	FARIDKOT	S-NPP	74.61419	30.70780	14:12:00	D	1.60
95	FARIDKOT	FARIDKOT	S-NPP	74.70190	30.70877	14:12:00	D	4.50
96	FARIDKOT	FARIDKOT	S-NPP	74.81913	30.70947	14:12:00	D	4.50

97	FARIDKOT	FARIDKOT	S-NPP	74.81766	30.71161	14:12:00	D	2.70
98	FARIDKOT	FARIDKOT	S-NPP	74.79016	30.71506	14:12:00	D	1.80
99	FARIDKOT	FARIDKOT	S-NPP	74.89561	30.71706	14:12:00	D	4.70
100	FARIDKOT	FARIDKOT	S-NPP	74.53525	30.71741	12:36:00	D	15.10
101	FARIDKOT	FARIDKOT	S-NPP	74.53246	30.71894	12:36:00	D	15.00
102	FARIDKOT	FARIDKOT	S-NPP	74.63962	30.72033	14:12:00	D	4.90
103	FARIDKOT	FARIDKOT	S-NPP	74.89651	30.72081	14:12:00	D	4.50
104	FARIDKOT	FARIDKOT	S-NPP	74.50378	30.72094	14:12:00	D	6.00
105	FARIDKOT	FARIDKOT	S-NPP	74.76601	30.72411	14:12:00	D	7.90
106	FARIDKOT	FARIDKOT	S-NPP	74.76987	30.72439	14:12:00	D	13.90
107	FARIDKOT	FARIDKOT	S-NPP	74.62061	30.72683	12:36:00	D	9.60
108	FARIDKOT	FARIDKOT	S-NPP	74.80852	30.72715	14:12:00	D	3.00
109	FARIDKOT	FARIDKOT	S-NPP	74.81237	30.72742	14:12:00	D	3.00
110	FARIDKOT	FARIDKOT	S-NPP	74.74630	30.72807	14:12:00	D	3.60
111	FARIDKOT	FARIDKOT	S-NPP	74.61752	30.72878	12:36:00	D	11.40
112	FARIDKOT	FARIDKOT	S-NPP	74.76551	30.72945	14:12:00	D	13.40
113	FARIDKOT	FARIDKOT	S-NPP	74.76938	30.72973	14:12:00	D	24.60
114	FARIDKOT	FARIDKOT	S-NPP	74.85450	30.73583	14:12:00	D	2.10
115	FARIDKOT	FARIDKOT	S-NPP	74.77993	30.74127	14:12:00	D	7.80
116	FARIDKOT	FARIDKOT	S-NPP	74.77944	30.74662	14:12:00	D	7.80
117	FARIDKOT	FARIDKOT	S-NPP	74.78597	30.75146	12:36:00	D	6.80
118	FARIDKOT	FARIDKOT	TERRA	74.52300	30.75300	11:20:00	D	10.20
119	FARIDKOT	FARIDKOT	S-NPP	74.50822	30.75310	14:12:00	D	3.30
120	FARIDKOT	FARIDKOT	S-NPP	74.56039	30.75708	14:12:00	D	4.70
121	FARIDKOT	FARIDKOT	S-NPP	74.73563	30.75955	14:12:00	D	4.50
122	FARIDKOT	FARIDKOT	S-NPP	74.73947	30.75983	14:12:00	D	4.50
123	FARIDKOT	FARIDKOT	S-NPP	74.81328	30.75988	14:12:00	D	4.40
124	FARIDKOT	FARIDKOT	S-NPP	74.81715	30.76017	14:12:00	D	4.40
125	FARIDKOT	FARIDKOT	S-NPP	74.61628	30.76666	14:12:00	D	3.80
126	FARIDKOT	FARIDKOT	S-NPP	74.71931	30.76908	14:12:00	D	7.10
127	FARIDKOT	FARIDKOT	S-NPP	74.70303	30.77859	14:12:00	D	12.30
128	FARIDKOT	FARIDKOT	S-NPP	74.53548	30.78175	14:12:00	D	2.50
129	FARIDKOT	FARIDKOT	S-NPP	74.69508	30.81489	12:36:00	D	15.00

130	FARIDKOT	FARIDKOT	S-NPP	74.70164	30.81672	12:36:00	D	18.50
131	FARIDKOT	FARIDKOT	S-NPP	74.72132	30.82223	12:36:00	D	4.10
132	FARIDKOT	JAITO	S-NPP	74.91581	30.37358	14:12:00	D	7.30
133	FARIDKOT	JAITO	S-NPP	74.81400	30.51019	12:36:00	D	6.00
134	FATEHGARH SAHIB	ALMOH	S-NPP	76.26847	30.56238	14:12:00	D	2.50
135	FATEHGARH SAHIB	ALMOH	S-NPP	76.28899	30.60477	14:12:00	D	4.50
136	FATEHGARH SAHIB	BASSI PATHANAN	S-NPP	76.45501	30.64902	14:12:00	D	3.80
137	FATEHGARH SAHIB	BASSI PATHANAN	S-NPP	76.49271	30.66912	14:12:00	D	23.50
138	FATEHGARH SAHIB	BASSI PATHANAN	S-NPP	76.49761	30.66942	14:12:00	D	19.80
139	FATEHGARH SAHIB	BASSI PATHANAN	S-NPP	76.46697	30.68533	14:12:00	D	4.50
140	FATEHGARH SAHIB	BASSI PATHANAN	S-NPP	76.47184	30.68563	14:12:00	D	4.50
141	FATEHGARH SAHIB	BASSI PATHANAN	S-NPP	76.41576	30.71760	14:12:00	D	1.90
142	FATEHGARH SAHIB	FATEHGARH SAHIB	S-NPP	76.39330	30.55854	14:12:00	D	1.60
143	FATEHGARH SAHIB	FATEHGARH SAHIB	S-NPP	76.50435	30.56688	12:36:00	D	4.50
144	FATEHGARH SAHIB	FATEHGARH SAHIB	S-NPP	76.52132	30.58440	12:36:00	D	3.60
145	FATEHGARH SAHIB	FATEHGARH SAHIB	S-NPP	76.29935	30.59371	14:12:00	D	2.80
146	FATEHGARH SAHIB	FATEHGARH SAHIB	S-NPP	76.46233	30.61024	14:12:00	D	4.80
147	FATEHGARH SAHIB	FATEHGARH SAHIB	S-NPP	76.42862	30.61192	14:12:00	D	3.60
148	FATEHGARH SAHIB	FATEHGARH SAHIB	S-NPP	76.45774	30.61363	14:12:00	D	4.00
149	FATEHGARH SAHIB	FATEHGARH SAHIB	S-NPP	76.47536	30.61761	12:36:00	D	4.80
150	FATEHGARH SAHIB	FATEHGARH SAHIB	S-NPP	76.48064	30.61901	12:36:00	D	4.80
151	FATEHGARH SAHIB	FATEHGARH SAHIB	S-NPP	76.45546	30.64312	14:12:00	D	3.80
152	FATEHGARH SAHIB	KHAMANOH	S-NPP	76.31072	30.75081	14:12:00	D	17.80
153	FAZILKA	ABOHAR	S-NPP	74.43003	30.00337	14:12:00	D	5.70
154	FAZILKA	ABOHAR	S-NPP	74.10719	30.04160	14:12:00	D	7.30
155	FAZILKA	ABOHAR	S-NPP	74.11062	30.04187	14:12:00	D	7.30
156	FAZILKA	ABOHAR	S-NPP	74.05155	30.04744	14:12:00	D	7.50
157	FAZILKA	ABOHAR	S-NPP	74.05495	30.04772	14:12:00	D	7.50
158	FAZILKA	ABOHAR	S-NPP	74.25664	30.23732	14:12:00	D	2.10
159	FAZILKA	FAZILKA	S-NPP	74.08257	30.19203	14:12:00	D	1.50
160	FAZILKA	FAZILKA	S-NPP	74.01959	30.20225	14:12:00	D	2.50
161	FAZILKA	FAZILKA	S-NPP	74.04807	30.21911	12:36:00	D	7.70
162	FAZILKA	FAZILKA	S-NPP	74.04164	30.23786	14:12:00	D	1.40

163	FAZILKA	FAZILKA	S-NPP	74.06984	30.24776	12:36:00	D	5.40
164	FAZILKA	FAZILKA	TERRA	74.07700	30.24800	11:20:00	D	5.70
165	FAZILKA	FAZILKA	S-NPP	74.07484	30.25073	14:12:00	D	3.10
166	FAZILKA	FAZILKA	S-NPP	74.09045	30.26741	14:12:00	D	6.40
167	FAZILKA	FAZILKA	S-NPP	73.97576	30.27871	14:12:00	D	9.50
168	FAZILKA	FAZILKA	S-NPP	74.00816	30.29672	14:12:00	D	1.90
169	FAZILKA	FAZILKA	S-NPP	73.97009	30.33452	14:12:00	D	2.70
170	FAZILKA	FAZILKA	S-NPP	73.96871	30.33812	14:12:00	D	2.50
171	FAZILKA	FAZILKA	S-NPP	73.99041	30.36031	14:12:00	D	4.70
172	FAZILKA	FAZILKA	S-NPP	74.29611	30.36180	14:12:00	D	1.50
173	FAZILKA	FAZILKA	S-NPP	74.29530	30.36331	14:12:00	D	1.60
174	FAZILKA	FAZILKA	S-NPP	74.02031	30.43971	14:12:00	D	3.10
175	FAZILKA	FAZILKA	S-NPP	74.18774	30.44327	14:12:00	D	2.20
176	FAZILKA	FAZILKA	S-NPP	74.13132	30.44381	14:12:00	D	2.70
177	FAZILKA	FAZILKA	S-NPP	74.12936	30.44555	14:12:00	D	3.20
178	FAZILKA	FAZILKA	S-NPP	74.18725	30.44842	14:12:00	D	2.20
179	FAZILKA	JALALABAD	S-NPP	74.26031	30.45658	12:36:00	D	5.70
180	FAZILKA	JALALABAD	S-NPP	74.24259	30.46338	14:12:00	D	1.60
181	FAZILKA	JALALABAD	S-NPP	74.24079	30.46441	14:12:00	D	1.60
182	FAZILKA	JALALABAD	S-NPP	74.31303	30.49602	14:12:00	D	4.10
183	FAZILKA	JALALABAD	S-NPP	74.10278	30.54394	14:12:00	D	2.80
184	FAZILKA	JALALABAD	S-NPP	74.35223	30.56281	12:36:00	D	30.80
185	FAZILKA	JALALABAD	S-NPP	74.35059	30.56412	12:36:00	D	29.00
186	FAZILKA	JALALABAD	S-NPP	74.35752	30.56610	12:36:00	D	27.60
187	FAZILKA	JALALABAD	S-NPP	74.13802	30.61394	14:12:00	D	4.50
188	FAZILKA	JALALABAD	S-NPP	74.14153	30.61422	14:12:00	D	4.50
189	FAZILKA	JALALABAD	S-NPP	74.15913	30.61562	14:12:00	D	1.90
190	FAZILKA	JALALABAD	S-NPP	74.17675	30.61702	14:12:00	D	3.90
191	FAZILKA	JALALABAD	S-NPP	74.15510	30.62049	14:12:00	D	8.90
192	FAZILKA	JALALABAD	S-NPP	74.15862	30.62077	14:12:00	D	20.80
193	FAZILKA	JALALABAD	S-NPP	74.24051	30.62205	14:12:00	D	2.80
194	FAZILKA	JALALABAD	S-NPP	74.40361	30.62424	14:12:00	D	4.60
195	FAZILKA	JALALABAD	S-NPP	74.28339	30.62541	14:12:00	D	2.80

196	FAZILKA	JALALABAD	S-NPP	74.19641	30.63417	14:12:00	D	2.90
197	FAZILKA	JALALABAD	S-NPP	74.47586	30.63597	12:36:00	D	11.00
198	FAZILKA	JALALABAD	S-NPP	74.33052	30.63846	12:36:00	D	5.10
199	FAZILKA	JALALABAD	S-NPP	74.32829	30.63883	12:36:00	D	5.30
200	FAZILKA	JALALABAD	S-NPP	74.23849	30.64275	14:12:00	D	2.90
201	FAZILKA	JALALABAD	S-NPP	74.22679	30.65224	14:12:00	D	2.70
202	FAZILKA	JALALABAD	S-NPP	74.27089	30.66153	14:12:00	D	2.90
203	FAZILKA	JALALABAD	S-NPP	74.38238	30.67499	14:12:00	D	2.30
204	FAZILKA	JALALABAD	S-NPP	74.38404	30.67535	14:12:00	D	2.70
205	FAZILKA	JALALABAD	S-NPP	74.47454	30.67644	14:12:00	D	7.00
206	FAZILKA	JALALABAD	S-NPP	74.33105	30.67646	14:12:00	D	6.40
207	FAZILKA	JALALABAD	S-NPP	74.33280	30.67648	14:12:00	D	5.10
208	FAZILKA	JALALABAD	S-NPP	74.47237	30.67710	14:12:00	D	3.60
209	FAZILKA	JALALABAD	S-NPP	74.47606	30.67739	14:12:00	D	3.60
210	FAZILKA	JALALABAD	S-NPP	74.45197	30.67978	12:36:00	D	7.50
211	FAZILKA	JALALABAD	S-NPP	74.38187	30.68021	14:12:00	D	5.70
212	FAZILKA	JALALABAD	S-NPP	74.38354	30.68057	14:12:00	D	5.70
213	FAZILKA	JALALABAD	S-NPP	74.44940	30.68082	12:36:00	D	5.20
214	FAZILKA	JALALABAD	S-NPP	74.28318	30.68336	14:12:00	D	2.00
215	FAZILKA	JALALABAD	S-NPP	74.29295	30.69456	14:12:00	D	2.20
216	FAZILKA	JALALABAD	S-NPP	74.28990	30.70067	12:36:00	D	5.70
217	FAZILKA	JALALABAD	S-NPP	74.26678	30.70303	14:12:00	D	4.90
218	FAZILKA	JALALABAD	S-NPP	74.42683	30.70990	14:12:00	D	7.40
219	FAZILKA	JALALABAD	S-NPP	74.42632	30.71514	14:12:00	D	7.10
220	FAZILKA	JALALABAD	S-NPP	74.36686	30.72116	14:12:00	D	3.40
221	FAZILKA	JALALABAD	S-NPP	74.36636	30.72639	14:12:00	D	3.40
222	FAZILKA	JALALABAD	S-NPP	74.30068	30.72658	14:12:00	D	2.70
223	FAZILKA	JALALABAD	S-NPP	74.46108	30.73890	14:12:00	D	3.30
224	FAZILKA	JALALABAD	S-NPP	74.42747	30.74161	14:12:00	D	2.80
225	FAZILKA	JALALABAD	S-NPP	74.46059	30.74415	14:12:00	D	3.30
226	FAZILKA	JALALABAD	S-NPP	74.40863	30.74544	14:12:00	D	28.00
227	FAZILKA	JALALABAD	S-NPP	74.41230	30.74572	14:12:00	D	28.00
228	FAZILKA	JALALABAD	S-NPP	74.42697	30.74685	14:12:00	D	25.10

229	FAZILKA	JALALABAD	S-NPP	74.45476	30.74733	12:36:00	D	6.30
230	FAZILKA	JALALABAD	S-NPP	74.44166	30.74799	14:12:00	D	1.80
231	FAZILKA	JALALABAD	S-NPP	74.46326	30.75989	12:36:00	D	5.90
232	FAZILKA	JALALABAD	S-NPP	74.46342	30.76418	12:36:00	D	4.40
233	FAZILKA	JALALABAD	S-NPP	74.35869	30.76786	14:12:00	D	5.20
234	FAZILKA	JALALABAD	S-NPP	74.41345	30.77219	14:12:00	D	2.80
235	FAZILKA	JALALABAD	S-NPP	74.29974	30.77366	14:12:00	D	2.70
236	FAZILKA	JALALABAD	S-NPP	74.40097	30.78702	14:12:00	D	2.50
237	FAZILKA	JALALABAD	S-NPP	74.35670	30.78874	14:12:00	D	5.00
238	FAZILKA	JALALABAD	S-NPP	74.35605	30.78896	14:12:00	D	5.60
239	FAZILKA	JALALABAD	S-NPP	74.39989	30.79219	14:12:00	D	2.60
240	FAZILKA	JALALABAD	S-NPP	74.32996	30.79405	12:36:00	D	3.70
241	FIROZPUR	FIROZPUR	TERRA	74.90900	30.74900	11:20:00	D	6.50
242	FIROZPUR	FIROZPUR	S-NPP	74.89172	30.76018	14:12:00	D	5.30
243	FIROZPUR	FIROZPUR	S-NPP	74.89565	30.76046	14:12:00	D	5.30
244	FIROZPUR	FIROZPUR	S-NPP	74.51042	30.76918	14:12:00	D	2.40
245	FIROZPUR	FIROZPUR	S-NPP	74.90463	30.77733	12:36:00	D	3.30
246	FIROZPUR	FIROZPUR	S-NPP	74.45293	30.78022	14:12:00	D	4.30
247	FIROZPUR	FIROZPUR	S-NPP	74.45663	30.78048	14:12:00	D	4.30
248	FIROZPUR	FIROZPUR	S-NPP	74.45341	30.78062	14:12:00	D	4.30
249	FIROZPUR	FIROZPUR	S-NPP	74.45710	30.78091	14:12:00	D	4.30
250	FIROZPUR	FIROZPUR	S-NPP	74.50827	30.78397	12:36:00	D	3.80
251	FIROZPUR	FIROZPUR	S-NPP	74.50561	30.78647	12:36:00	D	4.10
252	FIROZPUR	FIROZPUR	TERRA	74.79400	30.79400	11:20:00	D	16.60
253	FIROZPUR	FIROZPUR	S-NPP	74.42928	30.79435	14:12:00	D	4.00
254	FIROZPUR	FIROZPUR	S-NPP	74.42982	30.79461	14:12:00	D	7.90
255	FIROZPUR	FIROZPUR	S-NPP	74.43296	30.79462	14:12:00	D	4.00
256	FIROZPUR	FIROZPUR	S-NPP	74.52992	30.79637	14:12:00	D	4.50
257	FIROZPUR	FIROZPUR	S-NPP	74.53366	30.79664	14:12:00	D	7.70
258	FIROZPUR	FIROZPUR	S-NPP	74.53027	30.79729	14:12:00	D	4.70
259	FIROZPUR	FIROZPUR	S-NPP	74.53400	30.79758	14:12:00	D	6.80
260	FIROZPUR	FIROZPUR	TERRA	74.43600	30.80300	11:20:00	D	10.80
261	FIROZPUR	FIROZPUR	TERRA	74.42600	30.80400	11:20:00	D	10.00

262	FIROZPUR	FIROZPUR	S-NPP	74.81665	30.80875	14:12:00	D	2.00
263	FIROZPUR	FIROZPUR	S-NPP	74.81625	30.81132	14:12:00	D	1.80
264	FIROZPUR	FIROZPUR	S-NPP	74.40151	30.81340	14:12:00	D	7.70
265	FIROZPUR	FIROZPUR	S-NPP	74.40517	30.81368	14:12:00	D	8.50
266	FIROZPUR	FIROZPUR	TERRA	74.54500	30.81400	11:20:00	D	7.10
267	FIROZPUR	FIROZPUR	S-NPP	74.45626	30.82277	14:12:00	D	5.30
268	FIROZPUR	FIROZPUR	S-NPP	74.45997	30.82306	14:12:00	D	5.30
269	FIROZPUR	FIROZPUR	S-NPP	74.70340	30.83142	12:36:00	D	3.70
270	FIROZPUR	FIROZPUR	S-NPP	74.54719	30.83425	12:36:00	D	5.80
271	FIROZPUR	FIROZPUR	S-NPP	74.70016	30.83496	12:36:00	D	5.10
272	FIROZPUR	FIROZPUR	S-NPP	74.82543	30.83899	14:12:00	D	4.60
273	FIROZPUR	FIROZPUR	S-NPP	74.82883	30.84464	14:12:00	D	5.30
274	FIROZPUR	FIROZPUR	S-NPP	74.82833	30.85001	14:12:00	D	4.70
275	FIROZPUR	FIROZPUR	S-NPP	74.66020	30.86462	14:12:00	D	3.70
276	FIROZPUR	FIROZPUR	S-NPP	74.47819	30.86681	14:12:00	D	3.60
277	FIROZPUR	FIROZPUR	S-NPP	74.48561	30.86738	14:12:00	D	5.00
278	FIROZPUR	FIROZPUR	S-NPP	74.40334	30.87158	14:12:00	D	6.60
279	FIROZPUR	FIROZPUR	S-NPP	74.40701	30.87187	14:12:00	D	12.50
280	FIROZPUR	FIROZPUR	S-NPP	74.40285	30.87682	14:12:00	D	6.60
281	FIROZPUR	FIROZPUR	S-NPP	74.40105	30.88138	14:12:00	D	2.90
282	FIROZPUR	FIROZPUR	S-NPP	74.40235	30.88206	14:12:00	D	3.30
283	FIROZPUR	FIROZPUR	S-NPP	74.47670	30.88260	14:12:00	D	6.70
284	FIROZPUR	FIROZPUR	S-NPP	74.48042	30.88289	14:12:00	D	16.50
285	FIROZPUR	FIROZPUR	S-NPP	74.50647	30.88492	14:12:00	D	4.30
286	FIROZPUR	FIROZPUR	S-NPP	74.45644	30.88536	14:12:00	D	1.90
287	FIROZPUR	FIROZPUR	S-NPP	74.45766	30.88641	14:12:00	D	1.80
288	FIROZPUR	FIROZPUR	S-NPP	74.67348	30.88706	14:12:00	D	11.90
289	FIROZPUR	FIROZPUR	S-NPP	74.67730	30.88736	14:12:00	D	22.30
290	FIROZPUR	FIROZPUR	S-NPP	74.71944	30.89054	14:12:00	D	11.10
291	FIROZPUR	FIROZPUR	S-NPP	74.67681	30.89268	14:12:00	D	29.20
292	FIROZPUR	FIROZPUR	S-NPP	74.42530	30.89898	14:12:00	D	4.40
293	FIROZPUR	FIROZPUR	S-NPP	74.43959	30.90532	14:12:00	D	8.10
294	FIROZPUR	FIROZPUR	S-NPP	74.46131	30.91220	14:12:00	D	2.70

295	FIROZPUR	FIROZPUR	S-NPP	74.79476	30.91781	14:12:00	D	1.80
296	FIROZPUR	FIROZPUR	S-NPP	74.65913	30.91813	14:12:00	D	4.00
297	FIROZPUR	FIROZPUR	S-NPP	74.79353	30.91990	14:12:00	D	1.50
298	FIROZPUR	FIROZPUR	S-NPP	74.65764	30.92107	14:12:00	D	9.20
299	FIROZPUR	FIROZPUR	S-NPP	74.53564	30.92683	12:36:00	D	6.70
300	FIROZPUR	FIROZPUR	TERRA	74.45300	30.93000	11:20:00	D	5.10
301	FIROZPUR	FIROZPUR	S-NPP	74.53336	30.93057	12:36:00	D	7.70
302	FIROZPUR	FIROZPUR	S-NPP	74.57640	30.93125	14:12:00	D	25.70
303	FIROZPUR	FIROZPUR	S-NPP	74.58018	30.93152	14:12:00	D	18.30
304	FIROZPUR	FIROZPUR	S-NPP	74.82324	30.93820	14:12:00	D	9.70
305	FIROZPUR	FIROZPUR	S-NPP	74.66324	30.94291	14:12:00	D	3.30
306	FIROZPUR	FIROZPUR	S-NPP	74.66706	30.94320	14:12:00	D	3.30
307	FIROZPUR	FIROZPUR	S-NPP	74.69389	30.94514	14:12:00	D	9.50
308	FIROZPUR	FIROZPUR	S-NPP	74.69774	30.94542	14:12:00	D	9.50
309	FIROZPUR	FIROZPUR	S-NPP	74.45039	30.94847	14:12:00	D	2.60
310	FIROZPUR	FIROZPUR	S-NPP	74.65070	30.94899	12:36:00	D	14.90
311	FIROZPUR	FIROZPUR	S-NPP	74.64362	30.95045	12:36:00	D	12.30
312	FIROZPUR	FIROZPUR	S-NPP	74.56306	30.95160	14:12:00	D	2.60
313	FIROZPUR	FIROZPUR	S-NPP	74.56685	30.95188	14:12:00	D	2.60
314	FIROZPUR	FIROZPUR	S-NPP	74.65017	30.95231	12:36:00	D	20.70
315	FIROZPUR	FIROZPUR	S-NPP	74.65459	30.95301	14:12:00	D	2.90
316	FIROZPUR	FIROZPUR	S-NPP	74.64828	30.95542	12:36:00	D	7.40
317	FIROZPUR	FIROZPUR	S-NPP	74.68906	30.95553	14:12:00	D	5.30
318	FIROZPUR	FIROZPUR	S-NPP	74.69290	30.95581	14:12:00	D	8.20
319	FIROZPUR	FIROZPUR	S-NPP	74.68857	30.96087	14:12:00	D	5.30
320	FIROZPUR	FIROZPUR	S-NPP	74.56910	30.96805	14:12:00	D	21.90
321	FIROZPUR	FIROZPUR	S-NPP	74.54601	30.97164	14:12:00	D	5.80
322	FIROZPUR	FIROZPUR	S-NPP	74.59888	30.97563	14:12:00	D	4.90
323	FIROZPUR	FIROZPUR	S-NPP	74.54552	30.97693	14:12:00	D	5.20
324	FIROZPUR	FIROZPUR	S-NPP	74.68661	30.98221	14:12:00	D	12.30
325	FIROZPUR	FIROZPUR	S-NPP	74.68130	30.99792	14:12:00	D	5.00
326	FIROZPUR	FIROZPUR	S-NPP	74.70773	31.00530	14:12:00	D	2.20
327	FIROZPUR	FIROZPUR	S-NPP	74.77351	31.01027	14:12:00	D	4.20

328	FIROZPUR	FIROZPUR	S-NPP	74.56818	31.01476	14:12:00	D	4.00
329	FIROZPUR	FIROZPUR	S-NPP	74.56843	31.01602	14:12:00	D	5.40
330	FIROZPUR	FIROZPUR	S-NPP	74.64047	31.01990	14:12:00	D	2.20
331	FIROZPUR	FIROZPUR	S-NPP	74.56767	31.02006	14:12:00	D	2.90
332	FIROZPUR	FIROZPUR	S-NPP	74.64057	31.02164	14:12:00	D	5.70
333	FIROZPUR	FIROZPUR	TERRA	74.63800	31.02200	11:20:00	D	30.90
334	FIROZPUR	FIROZPUR	S-NPP	74.75271	31.02241	14:12:00	D	8.50
335	FIROZPUR	FIROZPUR	S-NPP	74.75659	31.02268	14:12:00	D	13.00
336	FIROZPUR	FIROZPUR	TERRA	74.62700	31.02300	11:20:00	D	8.00
337	FIROZPUR	FIROZPUR	S-NPP	74.75262	31.02488	14:12:00	D	5.40
338	FIROZPUR	FIROZPUR	S-NPP	74.75650	31.02518	14:12:00	D	8.80
339	FIROZPUR	FIROZPUR	S-NPP	74.63998	31.02523	14:12:00	D	5.40
340	FIROZPUR	FIROZPUR	S-NPP	74.61227	31.03395	14:12:00	D	3.50
341	FIROZPUR	FIROZPUR	S-NPP	74.69703	31.03465	14:12:00	D	2.60
342	FIROZPUR	FIROZPUR	S-NPP	74.73422	31.05346	14:12:00	D	3.70
343	FIROZPUR	FIROZPUR	S-NPP	74.73810	31.05374	14:12:00	D	5.00
344	FIROZPUR	FIROZPUR	S-NPP	74.71049	31.05713	14:12:00	D	4.50
345	FIROZPUR	FIROZPUR	S-NPP	74.71436	31.05741	14:12:00	D	5.00
346	FIROZPUR	FIROZPUR	S-NPP	74.77162	31.07234	14:12:00	D	5.60
347	FIROZPUR	ZIRA	S-NPP	74.85229	30.93303	14:12:00	D	3.20
348	FIROZPUR	ZIRA	S-NPP	74.85114	30.93474	14:12:00	D	3.70
349	FIROZPUR	ZIRA	S-NPP	74.85358	30.95118	14:12:00	D	8.70
350	FIROZPUR	ZIRA	S-NPP	74.85751	30.95146	14:12:00	D	8.90
351	FIROZPUR	ZIRA	S-NPP	75.22234	30.95461	14:12:00	D	2.50
352	FIROZPUR	ZIRA	S-NPP	74.85702	30.95685	14:12:00	D	37.60
353	FIROZPUR	ZIRA	S-NPP	75.28471	30.95875	14:12:00	D	2.50
354	FIROZPUR	ZIRA	S-NPP	75.28519	30.95980	14:12:00	D	2.40
355	FIROZPUR	ZIRA	S-NPP	75.34246	30.97372	14:12:00	D	2.70
356	FIROZPUR	ZIRA	S-NPP	74.89497	30.97585	14:12:00	D	5.90
357	FIROZPUR	ZIRA	S-NPP	75.33777	30.97898	14:12:00	D	3.50
358	FIROZPUR	ZIRA	S-NPP	75.19928	30.98073	14:12:00	D	2.20
359	FIROZPUR	ZIRA	S-NPP	74.87425	30.98522	14:12:00	D	3.80
360	FIROZPUR	ZIRA	S-NPP	74.84977	31.03769	14:12:00	D	10.80

361	FIROZPUR	ZIRA	S-NPP	74.99772	31.03790	14:12:00	D	10.20
362	FIROZPUR	ZIRA	S-NPP	74.99770	31.03923	14:12:00	D	10.30
363	FIROZPUR	ZIRA	S-NPP	74.84950	31.03996	14:12:00	D	14.70
364	FIROZPUR	ZIRA	S-NPP	74.97520	31.06504	14:12:00	D	9.00
365	FIROZPUR	ZIRA	S-NPP	75.04628	31.07816	12:36:00	D	5.20
366	FIROZPUR	ZIRA	S-NPP	75.04574	31.07902	12:36:00	D	5.80
367	FIROZPUR	ZIRA	S-NPP	75.14379	31.09873	14:12:00	D	4.00
368	FIROZPUR	ZIRA	S-NPP	75.09225	31.12267	14:12:00	D	3.90
369	FIROZPUR	ZIRA	S-NPP	75.05060	31.13068	14:12:00	D	5.70
370	GURDASPUR	BATALA	S-NPP	75.39710	31.65212	14:12:00	D	3.00
371	GURDASPUR	BATALA	S-NPP	75.39229	31.65743	14:12:00	D	4.40
372	GURDASPUR	BATALA	S-NPP	75.41833	31.65916	14:12:00	D	2.00
373	GURDASPUR	BATALA	S-NPP	75.33090	31.66455	14:12:00	D	12.70
374	GURDASPUR	BATALA	S-NPP	75.38100	31.69417	14:12:00	D	5.00
375	GURDASPUR	BATALA	S-NPP	75.38038	31.69603	14:12:00	D	4.50
376	GURDASPUR	BATALA	S-NPP	75.32383	31.69773	14:12:00	D	4.40
377	GURDASPUR	BATALA	S-NPP	75.35452	31.69814	14:12:00	D	3.40
378	GURDASPUR	BATALA	S-NPP	75.27457	31.69879	12:36:00	D	9.30
379	GURDASPUR	BATALA	S-NPP	75.32389	31.70181	14:12:00	D	5.00
380	GURDASPUR	BATALA	S-NPP	75.32338	31.70331	14:12:00	D	4.40
381	GURDASPUR	BATALA	S-NPP	75.32768	31.70361	14:12:00	D	4.40
382	GURDASPUR	BATALA	S-NPP	75.32343	31.70740	14:12:00	D	5.00
383	GURDASPUR	BATALA	S-NPP	75.32773	31.70767	14:12:00	D	5.00
384	GURDASPUR	BATALA	S-NPP	75.37909	31.71656	14:12:00	D	2.80
385	GURDASPUR	BATALA	S-NPP	75.30004	31.72832	14:12:00	D	5.40
386	GURDASPUR	BATALA	S-NPP	75.39070	31.73420	14:12:00	D	7.80
387	GURDASPUR	BATALA	S-NPP	75.35125	31.73727	14:12:00	D	4.60
388	GURDASPUR	BATALA	S-NPP	75.20421	31.74297	12:36:00	D	6.90
389	GURDASPUR	BATALA	S-NPP	75.35942	31.74342	14:12:00	D	6.00
390	GURDASPUR	BATALA	S-NPP	75.36375	31.74371	14:12:00	D	5.30
391	GURDASPUR	BATALA	S-NPP	75.48164	31.75136	14:12:00	D	3.40
392	GURDASPUR	BATALA	S-NPP	75.24638	31.75274	14:12:00	D	4.10
393	GURDASPUR	BATALA	S-NPP	75.46169	31.75307	12:36:00	D	5.80

394	GURDASPUR	BATALA	S-NPP	75.43730	31.75415	14:12:00	D	5.70
395	GURDASPUR	BATALA	S-NPP	75.46220	31.77274	14:12:00	D	2.20
396	GURDASPUR	BATALA	S-NPP	75.29629	31.77290	14:12:00	D	4.30
397	GURDASPUR	BATALA	S-NPP	75.17882	31.78576	14:12:00	D	1.70
398	GURDASPUR	BATALA	S-NPP	75.17954	31.78720	14:12:00	D	1.60
399	GURDASPUR	BATALA	S-NPP	75.42100	31.79260	14:12:00	D	5.30
400	GURDASPUR	BATALA	S-NPP	75.42020	31.79522	14:12:00	D	6.40
401	GURDASPUR	BATALA	S-NPP	75.34866	31.81331	14:12:00	D	3.00
402	GURDASPUR	BATALA	S-NPP	75.30927	31.81643	14:12:00	D	1.40
403	GURDASPUR	BATALA	TERRA	74.98000	31.83800	11:20:00	D	4.60
404	GURDASPUR	BATALA	S-NPP	75.03255	31.85603	12:36:00	D	5.10
405	GURDASPUR	BATALA	S-NPP	74.99619	31.85671	14:12:00	D	3.00
406	GURDASPUR	BATALA	S-NPP	75.19992	31.88588	12:36:00	D	4.10
407	GURDASPUR	BATALA	S-NPP	75.11127	31.88638	14:12:00	D	3.00
408	GURDASPUR	BATALA	S-NPP	75.11085	31.88686	14:12:00	D	3.80
409	GURDASPUR	BATALA	S-NPP	75.13183	31.89324	14:12:00	D	3.80
410	GURDASPUR	BATALA	S-NPP	75.13139	31.89386	14:12:00	D	4.00
411	GURDASPUR	DERA BABA NANAK	S-NPP	75.09912	31.92999	14:12:00	D	12.50
412	GURDASPUR	DERA BABA NANAK	S-NPP	75.09867	31.93551	14:12:00	D	12.50
413	GURDASPUR	DERA BABA NANAK	S-NPP	74.95972	31.95333	12:36:00	D	3.80
414	GURDASPUR	DERA BABA NANAK	S-NPP	74.92432	31.97324	14:12:00	D	4.30
415	GURDASPUR	DERA BABA NANAK	S-NPP	74.92154	31.97330	14:12:00	D	4.60
416	GURDASPUR	DERA BABA NANAK	S-NPP	75.01620	31.98489	14:12:00	D	3.40
417	GURDASPUR	DERA BABA NANAK	S-NPP	75.09035	31.98490	14:12:00	D	2.50
418	GURDASPUR	DERA BABA NANAK	S-NPP	75.06947	32.01115	12:36:00	D	6.20
419	GURDASPUR	DERA BABA NANAK	S-NPP	75.00551	32.01183	14:12:00	D	2.50
420	GURDASPUR	GURDASPUR	S-NPP	75.45457	31.81468	12:36:00	D	6.30
421	GURDASPUR	GURDASPUR	S-NPP	75.45064	31.81694	12:36:00	D	4.40
422	GURDASPUR	GURDASPUR	S-NPP	75.33096	31.86838	14:12:00	D	4.30
423	GURDASPUR	GURDASPUR	S-NPP	75.43375	31.89780	14:12:00	D	2.00
424	GURDASPUR	GURDASPUR	S-NPP	75.24780	31.91239	12:36:00	D	4.30
425	GURDASPUR	GURDASPUR	S-NPP	75.24429	31.91496	12:36:00	D	2.50
426	GURDASPUR	GURDASPUR	S-NPP	75.18511	31.96914	14:12:00	D	5.90

427	GURDASPUR	GURDASPUR	S-NPP	75.23499	31.98929	14:12:00	D	4.40
428	GURDASPUR	GURDASPUR	S-NPP	75.23220	31.99294	14:12:00	D	6.50
429	GURDASPUR	GURDASPUR	S-NPP	75.28815	31.99639	14:12:00	D	11.60
430	GURDASPUR	GURDASPUR	S-NPP	75.28613	31.99838	14:12:00	D	8.60
431	GURDASPUR	GURDASPUR	S-NPP	75.13090	32.02557	14:12:00	D	2.10
432	GURDASPUR	GURDASPUR	S-NPP	75.12009	32.05268	14:12:00	D	4.30
433	GURDASPUR	GURDASPUR	S-NPP	75.12431	32.05296	14:12:00	D	5.00
434	GURDASPUR	GURDASPUR	S-NPP	75.26152	32.05642	14:12:00	D	6.30
435	GURDASPUR	GURDASPUR	S-NPP	75.26584	32.05671	14:12:00	D	6.30
436	GURDASPUR	GURDASPUR	S-NPP	75.26962	32.05967	12:36:00	D	6.90
437	GURDASPUR	GURDASPUR	S-NPP	75.33522	32.06121	14:12:00	D	6.90
438	GURDASPUR	GURDASPUR	S-NPP	75.33958	32.06150	14:12:00	D	12.40
439	GURDASPUR	GURDASPUR	S-NPP	75.27309	32.07402	14:12:00	D	3.10
440	GURDASPUR	GURDASPUR	S-NPP	75.24239	32.07758	14:12:00	D	5.30
441	GURDASPUR	GURDASPUR	S-NPP	75.24670	32.07787	14:12:00	D	5.30
442	GURDASPUR	GURDASPUR	S-NPP	75.20712	32.08641	14:12:00	D	2.50
443	GURDASPUR	GURDASPUR	S-NPP	75.31776	32.09970	12:36:00	D	4.30
444	GURDASPUR	GURDASPUR	S-NPP	75.28883	32.10948	12:36:00	D	4.80
445	GURDASPUR	GURDASPUR	S-NPP	75.28812	32.11169	12:36:00	D	3.10
446	HOSHIARPUR	DASUYA	S-NPP	75.60169	31.64271	14:12:00	D	6.10
447	HOSHIARPUR	DASUYA	S-NPP	75.58340	31.64724	14:12:00	D	3.20
448	HOSHIARPUR	DASUYA	AQUA	75.60600	31.73200	12:55:00	D	40.10
449	HOSHIARPUR	DASUYA	S-NPP	75.59939	31.73610	14:12:00	D	5.90
450	HOSHIARPUR	DASUYA	S-NPP	75.59445	31.74149	14:12:00	D	6.10
451	HOSHIARPUR	DASUYA	S-NPP	75.55779	31.75056	14:12:00	D	6.10
452	HOSHIARPUR	DASUYA	S-NPP	75.61501	31.76560	14:12:00	D	4.10
453	HOSHIARPUR	DASUYA	S-NPP	75.59152	31.82841	14:12:00	D	7.80
454	HOSHIARPUR	DASUYA	S-NPP	75.59105	31.83409	14:12:00	D	3.70
455	HOSHIARPUR	GARHSHANKAR	S-NPP	76.08156	31.23302	12:36:00	D	4.40
456	HOSHIARPUR	HOSHIARPUR	S-NPP	75.70539	31.55615	14:12:00	D	2.40
457	HOSHIARPUR	MUKERIAN	S-NPP	75.56650	31.92593	14:12:00	D	5.20
458	HOSHIARPUR	MUKERIAN	S-NPP	75.57097	31.92620	14:12:00	D	5.70
459	JALANDHAR	JALANDHAR I	TERRA	75.72800	31.44300	11:20:00	D	20.70

460	JALANDHAR	JALANDHAR II	S-NPP	75.48323	31.48186	14:12:00	D	3.50
461	JALANDHAR	JALANDHAR II	S-NPP	75.68518	31.52627	14:12:00	D	3.40
462	JALANDHAR	JALANDHAR II	S-NPP	75.59980	31.58355	14:12:00	D	2.80
463	JALANDHAR	JALANDHAR II	S-NPP	75.60580	31.59171	14:12:00	D	5.70
464	JALANDHAR	JALANDHAR II	S-NPP	75.60336	31.59517	14:12:00	D	14.00
465	JALANDHAR	JALANDHAR II	S-NPP	75.60534	31.59737	14:12:00	D	5.70
466	JALANDHAR	NAKODAR	S-NPP	75.46610	30.97625	14:12:00	D	5.50
467	JALANDHAR	NAKODAR	S-NPP	75.46631	30.97847	14:12:00	D	5.80
468	JALANDHAR	NAKODAR	S-NPP	75.40824	31.00047	14:12:00	D	2.30
469	JALANDHAR	NAKODAR	S-NPP	75.48949	31.00590	14:12:00	D	6.10
470	JALANDHAR	NAKODAR	S-NPP	75.41858	31.01500	12:36:00	D	6.50
471	JALANDHAR	NAKODAR	S-NPP	75.50001	31.09480	14:12:00	D	2.20
472	JALANDHAR	NAKODAR	S-NPP	75.48600	31.18173	14:12:00	D	2.80
473	JALANDHAR	NAKODAR	S-NPP	75.56338	31.19796	14:12:00	D	7.30
474	JALANDHAR	PHILLAUR	S-NPP	75.62200	30.98954	14:12:00	D	3.70
475	JALANDHAR	PHILLAUR	S-NPP	75.62157	30.99194	14:12:00	D	7.30
476	JALANDHAR	PHILLAUR	S-NPP	75.77211	31.01429	12:36:00	D	4.30
477	JALANDHAR	PHILLAUR	S-NPP	75.73811	31.03362	14:12:00	D	2.50
478	JALANDHAR	SHAHKOT	S-NPP	75.32042	31.03356	14:12:00	D	5.60
479	JALANDHAR	SHAHKOT	S-NPP	75.29804	31.04869	14:12:00	D	2.60
480	JALANDHAR	SHAHKOT	S-NPP	75.23500	31.04974	14:12:00	D	3.20
481	JALANDHAR	SHAHKOT	S-NPP	75.27292	31.05201	14:12:00	D	4.70
482	JALANDHAR	SHAHKOT	S-NPP	75.27248	31.05243	14:12:00	D	4.20
483	JALANDHAR	SHAHKOT	S-NPP	75.28548	31.05283	14:12:00	D	5.20
484	JALANDHAR	SHAHKOT	S-NPP	75.28501	31.05333	14:12:00	D	3.30
485	JALANDHAR	SHAHKOT	S-NPP	75.28919	31.05363	14:12:00	D	5.10
486	JALANDHAR	SHAHKOT	S-NPP	75.21336	31.05926	14:12:00	D	6.40
487	JALANDHAR	SHAHKOT	S-NPP	75.21320	31.06473	14:12:00	D	4.70
488	JALANDHAR	SHAHKOT	S-NPP	75.17359	31.08973	14:12:00	D	5.70
489	JALANDHAR	SHAHKOT	S-NPP	75.17771	31.09002	14:12:00	D	14.50
490	JALANDHAR	SHAHKOT	S-NPP	75.19425	31.09115	14:12:00	D	2.20
491	JALANDHAR	SHAHKOT	S-NPP	75.20206	31.09722	14:12:00	D	3.90
492	JALANDHAR	SHAHKOT	S-NPP	75.16393	31.10566	14:12:00	D	11.70

493	JALANDHAR	SHAHKOT	S-NPP	75.16805	31.10595	14:12:00	D	13.90
494	JALANDHAR	SHAHKOT	S-NPP	75.23431	31.11054	14:12:00	D	4.30
495	JALANDHAR	SHAHKOT	S-NPP	75.23752	31.12187	14:12:00	D	5.10
496	JALANDHAR	SHAHKOT	S-NPP	75.21597	31.14756	14:12:00	D	5.90
497	JALANDHAR	SHAHKOT	S-NPP	75.28998	31.14780	14:12:00	D	3.10
498	JALANDHAR	SHAHKOT	S-NPP	75.08988	31.15004	14:12:00	D	5.80
499	JALANDHAR	SHAHKOT	S-NPP	75.09119	31.15041	14:12:00	D	4.60
500	KAPURTHALA	BHOLATH	S-NPP	75.47664	31.51881	14:12:00	D	4.90
501	KAPURTHALA	BHOLATH	S-NPP	75.47617	31.52443	14:12:00	D	3.40
502	KAPURTHALA	BHOLATH	S-NPP	75.47973	31.52747	12:36:00	D	5.90
503	KAPURTHALA	BHOLATH	S-NPP	75.47636	31.52967	12:36:00	D	3.40
504	KAPURTHALA	BHOLATH	S-NPP	75.44860	31.53958	14:12:00	D	5.40
505	KAPURTHALA	BHOLATH	S-NPP	75.53819	31.56678	12:36:00	D	5.20
506	KAPURTHALA	BHOLATH	S-NPP	75.49828	31.57678	14:12:00	D	3.70
507	KAPURTHALA	BHOLATH	S-NPP	75.50265	31.57707	14:12:00	D	3.70
508	KAPURTHALA	BHOLATH	S-NPP	75.50703	31.57736	14:12:00	D	7.90
509	KAPURTHALA	BHOLATH	S-NPP	75.49781	31.58241	14:12:00	D	4.50
510	KAPURTHALA	BHOLATH	S-NPP	75.50219	31.58270	14:12:00	D	4.50
511	KAPURTHALA	BHOLATH	S-NPP	75.49517	31.58498	14:12:00	D	3.60
512	KAPURTHALA	BHOLATH	S-NPP	75.49957	31.58525	14:12:00	D	7.70
513	KAPURTHALA	BHOLATH	S-NPP	75.44215	31.58736	14:12:00	D	3.40
514	KAPURTHALA	BHOLATH	S-NPP	75.60133	31.59143	14:12:00	D	8.50
515	KAPURTHALA	BHOLATH	S-NPP	75.48543	31.59570	14:12:00	D	6.10
516	KAPURTHALA	BHOLATH	S-NPP	75.41943	31.59723	14:12:00	D	15.50
517	KAPURTHALA	BHOLATH	S-NPP	75.48767	31.59870	14:12:00	D	7.50
518	KAPURTHALA	BHOLATH	S-NPP	75.41740	31.59950	14:12:00	D	6.90
519	KAPURTHALA	BHOLATH	S-NPP	75.42175	31.59980	14:12:00	D	6.90
520	KAPURTHALA	BHOLATH	S-NPP	75.54488	31.60260	14:12:00	D	3.40
521	KAPURTHALA	BHOLATH	S-NPP	75.54929	31.60290	14:12:00	D	5.90
522	KAPURTHALA	BHOLATH	S-NPP	75.55372	31.60320	14:12:00	D	5.90
523	KAPURTHALA	BHOLATH	S-NPP	75.54225	31.60488	14:12:00	D	6.30
524	KAPURTHALA	BHOLATH	S-NPP	75.54668	31.60515	14:12:00	D	6.30
525	KAPURTHALA	BHOLATH	S-NPP	75.55111	31.60542	14:12:00	D	12.40

526	KAPURTHALA	BHOLATH	S-NPP	75.54443	31.60824	14:12:00	D	12.10
527	KAPURTHALA	BHOLATH	S-NPP	75.54884	31.60855	14:12:00	D	11.80
528	KAPURTHALA	BHOLATH	S-NPP	75.53736	31.61025	14:12:00	D	6.10
529	KAPURTHALA	BHOLATH	S-NPP	75.54179	31.61053	14:12:00	D	9.80
530	KAPURTHALA	BHOLATH	S-NPP	75.54622	31.61080	14:12:00	D	9.80
531	KAPURTHALA	BHOLATH	S-NPP	75.47962	31.61230	14:12:00	D	3.70
532	KAPURTHALA	BHOLATH	S-NPP	75.50246	31.61313	12:36:00	D	5.10
533	KAPURTHALA	BHOLATH	S-NPP	75.53514	31.61329	14:12:00	D	8.10
534	KAPURTHALA	BHOLATH	S-NPP	75.53957	31.61359	14:12:00	D	12.10
535	KAPURTHALA	BHOLATH	S-NPP	75.54398	31.61389	14:12:00	D	12.10
536	KAPURTHALA	BHOLATH	S-NPP	75.56449	31.61406	12:36:00	D	5.80
537	KAPURTHALA	BHOLATH	S-NPP	75.52361	31.61506	14:12:00	D	5.30
538	KAPURTHALA	BHOLATH	S-NPP	75.56168	31.61511	14:12:00	D	1.60
539	KAPURTHALA	BHOLATH	S-NPP	75.53247	31.61562	14:12:00	D	6.10
540	KAPURTHALA	BHOLATH	S-NPP	75.53690	31.61589	14:12:00	D	6.10
541	KAPURTHALA	BHOLATH	S-NPP	75.54133	31.61617	14:12:00	D	9.80
542	KAPURTHALA	BHOLATH	S-NPP	75.47913	31.61793	14:12:00	D	5.30
543	KAPURTHALA	BHOLATH	S-NPP	75.52316	31.62071	14:12:00	D	10.40
544	KAPURTHALA	BHOLATH	S-NPP	75.52759	31.62098	14:12:00	D	10.40
545	KAPURTHALA	BHOLATH	S-NPP	75.51388	31.62579	14:12:00	D	10.70
546	KAPURTHALA	BHOLATH	S-NPP	75.52270	31.62634	14:12:00	D	10.40
547	KAPURTHALA	BHOLATH	S-NPP	75.48260	31.62946	14:12:00	D	2.80
548	KAPURTHALA	KAPURTHALA	S-NPP	75.38152	31.24226	14:12:00	D	2.70
549	KAPURTHALA	KAPURTHALA	S-NPP	75.33759	31.25602	14:12:00	D	2.20
550	KAPURTHALA	KAPURTHALA	S-NPP	75.17613	31.36066	14:12:00	D	4.30
551	KAPURTHALA	KAPURTHALA	S-NPP	75.17680	31.36123	14:12:00	D	5.90
552	KAPURTHALA	KAPURTHALA	S-NPP	75.20441	31.37360	14:12:00	D	8.60
553	KAPURTHALA	KAPURTHALA	S-NPP	75.20509	31.37436	14:12:00	D	7.00
554	KAPURTHALA	KAPURTHALA	S-NPP	75.19515	31.38895	12:36:00	D	7.10
555	KAPURTHALA	KAPURTHALA	S-NPP	75.21266	31.42417	14:12:00	D	3.50
556	KAPURTHALA	KAPURTHALA	S-NPP	75.32481	31.51460	14:12:00	D	7.80
557	KAPURTHALA	KAPURTHALA	S-NPP	75.34962	31.52744	14:12:00	D	3.20
558	KAPURTHALA	KAPURTHALA	AQUA	75.43100	31.53000	12:55:00	D	42.50

559	KAPURTHALA	SULTANPUR LODHI	S-NPP	75.07357	31.14885	14:12:00	D	6.10
560	KAPURTHALA	SULTANPUR LODHI	S-NPP	75.07075	31.14905	14:12:00	D	3.60
561	KAPURTHALA	SULTANPUR LODHI	S-NPP	75.07483	31.14932	14:12:00	D	6.50
562	KAPURTHALA	SULTANPUR LODHI	S-NPP	75.10123	31.16189	14:12:00	D	2.40
563	KAPURTHALA	SULTANPUR LODHI	S-NPP	75.08018	31.16422	12:36:00	D	10.60
564	KAPURTHALA	SULTANPUR LODHI	S-NPP	75.08244	31.16443	12:36:00	D	7.80
565	KAPURTHALA	SULTANPUR LODHI	S-NPP	75.13754	31.17957	12:36:00	D	8.50
566	KAPURTHALA	SULTANPUR LODHI	S-NPP	75.14118	31.18138	12:36:00	D	7.30
567	KAPURTHALA	SULTANPUR LODHI	S-NPP	75.15118	31.19709	12:36:00	D	4.60
568	KAPURTHALA	SULTANPUR LODHI	S-NPP	75.09916	31.20055	14:12:00	D	7.70
569	KAPURTHALA	SULTANPUR LODHI	S-NPP	75.13833	31.27550	14:12:00	D	3.70
570	KAPURTHALA	SULTANPUR LODHI	S-NPP	75.15488	31.27661	14:12:00	D	2.80
571	KAPURTHALA	SULTANPUR LODHI	S-NPP	75.16635	31.28844	14:12:00	D	1.70
572	KAPURTHALA	SULTANPUR LODHI	S-NPP	75.22328	31.30894	14:12:00	D	2.00
573	KAPURTHALA	SULTANPUR LODHI	S-NPP	75.17149	31.36590	14:12:00	D	5.00
574	KAPURTHALA	SULTANPUR LODHI	S-NPP	75.17219	31.36645	14:12:00	D	5.90
575	LUDHIANA	JAGRAON	S-NPP	75.40614	30.60339	14:12:00	D	2.70
576	LUDHIANA	JAGRAON	S-NPP	75.45329	30.63118	12:36:00	D	4.30
577	LUDHIANA	JAGRAON	S-NPP	75.45383	30.63211	12:36:00	D	4.80
578	LUDHIANA	JAGRAON	S-NPP	75.55122	30.73547	14:12:00	D	6.40
579	LUDHIANA	JAGRAON	S-NPP	75.55551	30.73577	14:12:00	D	13.00
580	LUDHIANA	LUDHIANA EAST	S-NPP	76.09905	30.85347	14:12:00	D	10.30
581	LUDHIANA	LUDHIANA EAST	S-NPP	75.99326	30.97465	14:12:00	D	1.80
582	LUDHIANA	LUDHIANA WEST	S-NPP	75.71985	30.75847	14:12:00	D	7.80
583	LUDHIANA	LUDHIANA WEST	S-NPP	75.71936	30.76046	14:12:00	D	7.80
584	LUDHIANA	LUDHIANA WEST	S-NPP	75.71938	30.76413	14:12:00	D	7.80
585	LUDHIANA	LUDHIANA WEST	S-NPP	75.71888	30.76612	14:12:00	D	7.80
586	LUDHIANA	PAYAL	TERRA	75.99600	30.71400	11:20:00	D	8.20
587	LUDHIANA	RAIKOT	S-NPP	75.62645	30.76593	14:12:00	D	2.30
588	LUDHIANA	SAMRALA	S-NPP	76.27985	30.77826	14:12:00	D	22.90
589	LUDHIANA	SAMRALA	S-NPP	76.24899	30.81013	14:12:00	D	2.50
590	LUDHIANA	SAMRALA	S-NPP	76.24868	30.81146	14:12:00	D	3.40
591	LUDHIANA	SAMRALA	S-NPP	76.10371	30.85377	14:12:00	D	15.60

592	LUDHIANA	SAMRALA	S-NPP	76.27316	30.87031	14:12:00	D	2.50
593	MANSA	BUDHLADA	S-NPP	75.65695	29.77970	14:12:00	D	5.40
594	MANSA	BUDHLADA	S-NPP	75.49162	29.79564	14:12:00	D	2.70
595	MANSA	BUDHLADA	S-NPP	75.63839	29.81951	12:30:00	D	13.90
596	MANSA	BUDHLADA	S-NPP	75.58107	29.82928	14:12:00	D	8.80
597	MANSA	BUDHLADA	S-NPP	75.58070	29.83020	14:12:00	D	14.10
598	MANSA	BUDHLADA	S-NPP	75.58489	29.83051	14:12:00	D	12.90
599	MANSA	BUDHLADA	S-NPP	75.65273	29.83417	14:12:00	D	3.80
600	MANSA	BUDHLADA	S-NPP	75.58057	29.83484	14:12:00	D	8.80
601	MANSA	BUDHLADA	S-NPP	75.73167	29.86210	14:12:00	D	2.40
602	MANSA	MANSA	S-NPP	75.18128	29.92921	12:30:00	D	4.00
603	MANSA	MANSA	S-NPP	75.63784	30.10500	14:12:00	D	4.80
604	MANSA	SARDULGARH	S-NPP	75.25101	29.60135	14:12:00	D	2.30
605	MANSA	SARDULGARH	S-NPP	75.25498	29.60164	14:12:00	D	2.30
606	MANSA	SARDULGARH	S-NPP	75.19369	29.66273	14:12:00	D	3.80
607	MANSA	SARDULGARH	S-NPP	75.19763	29.66303	14:12:00	D	5.10
608	MANSA	SARDULGARH	S-NPP	75.28992	29.73766	12:30:00	D	6.50
609	MANSA	SARDULGARH	S-NPP	75.30031	29.82626	14:12:00	D	8.80
610	MOGA	BAGHA PURANA	S-NPP	75.06482	30.71167	14:12:00	D	3.30
611	MOGA	BAGHA PURANA	S-NPP	75.06432	30.71711	14:12:00	D	3.30
612	MOGA	BAGHA PURANA	TERRA	74.91900	30.74700	11:20:00	D	14.20
613	MOGA	BAGHA PURANA	S-NPP	75.07632	30.75146	14:12:00	D	2.40
614	MOGA	MOGA	S-NPP	75.18374	30.73682	14:12:00	D	2.90
615	MOGA	MOGA	S-NPP	75.18468	30.73703	14:12:00	D	3.90
616	MOGA	MOGA	S-NPP	75.22149	30.73975	14:12:00	D	3.70
617	MOGA	MOGA	S-NPP	75.22011	30.74480	14:12:00	D	5.10
618	MOGA	MOGA	S-NPP	75.22102	30.74524	14:12:00	D	2.40
619	MOGA	MOGA	S-NPP	75.07619	30.84470	14:12:00	D	1.70
620	MOGA	MOGA	S-NPP	75.07623	30.84561	14:12:00	D	2.10
621	MOGA	MOGA	S-NPP	75.06369	30.85024	14:12:00	D	7.20
622	MOGA	MOGA	TERRA	75.01800	30.85200	11:20:00	D	12.20
623	MOGA	NIHAL SINGH WALA	S-NPP	75.32103	30.56964	14:12:00	D	3.90
624	MOGA	NIHAL SINGH WALA	S-NPP	75.32518	30.56993	14:12:00	D	3.90

625	MOGA	NIHAL SINGH WALA	S-NPP	75.32056	30.57516	14:12:00	D	3.90
626	MOGA	NIHAL SINGH WALA	S-NPP	75.26513	30.57975	12:36:00	D	6.00
627	MOGA	NIHAL SINGH WALA	S-NPP	75.26398	30.57988	12:36:00	D	3.70
628	MUKTSAR	GIDDARBAHA	S-NPP	74.70267	30.24119	14:12:00	D	5.90
629	MUKTSAR	GIDDARBAHA	S-NPP	74.65534	30.26416	14:12:00	D	1.70
630	MUKTSAR	GIDDARBAHA	S-NPP	74.65368	30.26829	14:12:00	D	5.00
631	MUKTSAR	GIDDARBAHA	S-NPP	74.71362	30.27262	14:12:00	D	4.50
632	MUKTSAR	GIDDARBAHA	S-NPP	74.71471	30.27417	14:12:00	D	3.30
633	MUKTSAR	GIDDARBAHA	S-NPP	74.74482	30.34447	14:12:00	D	3.90
634	MUKTSAR	GIDDARBAHA	S-NPP	74.67827	30.36609	14:12:00	D	1.30
635	MUKTSAR	GIDDARBAHA	S-NPP	74.73908	30.37152	12:36:00	D	3.70
636	MUKTSAR	GIDDARBAHA	S-NPP	74.78365	30.37964	14:12:00	D	4.30
637	MUKTSAR	GIDDARBAHA	S-NPP	74.78746	30.37993	14:12:00	D	5.90
638	MUKTSAR	GIDDARBAHA	S-NPP	74.69233	30.38286	12:36:00	D	6.70
639	MUKTSAR	GIDDARBAHA	S-NPP	74.79076	30.38384	14:12:00	D	5.60
640	MUKTSAR	GIDDARBAHA	S-NPP	74.79077	30.38556	14:12:00	D	5.10
641	MUKTSAR	GIDDARBAHA	S-NPP	74.68937	30.38629	12:36:00	D	6.20
642	MUKTSAR	MALAUT	S-NPP	74.43156	29.98777	14:12:00	D	2.80
643	MUKTSAR	MALAUT	S-NPP	74.60598	29.99605	14:12:00	D	2.50
644	MUKTSAR	MALAUT	S-NPP	74.43054	29.99817	14:12:00	D	5.70
645	MUKTSAR	MALAUT	S-NPP	74.46951	30.00650	14:12:00	D	7.80
646	MUKTSAR	MALAUT	S-NPP	74.44135	30.03574	14:12:00	D	3.30
647	MUKTSAR	MALAUT	S-NPP	74.42351	30.09241	14:12:00	D	4.80
648	MUKTSAR	MALAUT	S-NPP	74.41930	30.15089	14:12:00	D	3.80
649	MUKTSAR	MALAUT	S-NPP	74.41028	30.15426	14:12:00	D	1.30
650	MUKTSAR	MALAUT	S-NPP	74.35159	30.27218	14:12:00	D	16.20
651	MUKTSAR	MALAUT	S-NPP	74.35517	30.27245	14:12:00	D	16.20
652	MUKTSAR	MUKTSAR	S-NPP	74.48129	30.39312	14:12:00	D	16.40
653	MUKTSAR	MUKTSAR	TERRA	74.35300	30.45500	11:20:00	D	4.70
654	MUKTSAR	MUKTSAR	S-NPP	74.70053	30.48969	14:12:00	D	3.60
655	MUKTSAR	MUKTSAR	S-NPP	74.74496	30.49097	14:12:00	D	7.10
656	MUKTSAR	MUKTSAR	S-NPP	74.69889	30.49302	14:12:00	D	2.80
657	MUKTSAR	MUKTSAR	TERRA	74.65000	30.52100	11:20:00	D	7.00

658	MUKTSAR	MUKTSAR	TERRA	74.63900	30.52300	11:20:00	D	8.60
659	MUKTSAR	MUKTSAR	S-NPP	74.45991	30.52306	14:12:00	D	4.20
660	MUKTSAR	MUKTSAR	TERRA	74.45900	30.53200	11:20:00	D	6.90
661	MUKTSAR	MUKTSAR	TERRA	74.44900	30.53300	11:20:00	D	12.10
662	MUKTSAR	MUKTSAR	S-NPP	74.59569	30.54405	14:12:00	D	5.60
663	MUKTSAR	MUKTSAR	AQUA	74.66600	30.57500	12:55:00	D	93.30
664	MUKTSAR	MUKTSAR	S-NPP	74.64530	30.59452	14:12:00	D	3.70
665	MUKTSAR	MUKTSAR	S-NPP	74.55240	30.61965	14:12:00	D	3.00
666	PATHANKOT	PATHANKOT	S-NPP	75.39532	32.22568	12:36:00	D	4.10
667	PATIALA	NABHA	S-NPP	76.03019	30.34506	12:30:00	D	3.20
668	PATIALA	NABHA	S-NPP	76.02895	30.34854	12:36:00	D	5.80
669	PATIALA	NABHA	S-NPP	76.04884	30.37342	14:12:00	D	3.80
670	PATIALA	NABHA	S-NPP	76.04836	30.37826	14:12:00	D	3.60
671	PATIALA	NABHA	S-NPP	76.12595	30.47449	12:36:00	D	5.30
672	PATIALA	NABHA	S-NPP	76.12183	30.47697	12:36:00	D	5.80
673	PATIALA	NABHA	S-NPP	76.13140	30.49470	14:12:00	D	3.80
674	PATIALA	NABHA	S-NPP	76.13267	30.49545	14:12:00	D	5.10
675	PATIALA	NABHA	S-NPP	76.25884	30.50321	14:12:00	D	3.10
676	PATIALA	NABHA	S-NPP	76.32333	30.53063	14:12:00	D	3.40
677	PATIALA	NABHA	S-NPP	76.26515	30.54860	12:36:00	D	3.70
678	PATIALA	PATIALA	TERRA	76.48000	30.10700	11:20:00	D	7.10
679	PATIALA	PATIALA	TERRA	76.30100	30.11700	11:20:00	D	13.50
680	PATIALA	PATIALA	TERRA	76.28900	30.11900	11:20:00	D	5.00
681	PATIALA	PATIALA	S-NPP	76.46153	30.13237	12:30:00	D	2.20
682	PATIALA	PATIALA	S-NPP	76.44993	30.14899	12:30:00	D	7.00
683	PATIALA	PATIALA	S-NPP	76.62571	30.15942	14:12:00	D	3.60
684	PATIALA	PATIALA	S-NPP	76.46952	30.16134	14:12:00	D	5.50
685	PATIALA	PATIALA	S-NPP	76.47431	30.16165	14:12:00	D	5.50
686	PATIALA	PATIALA	S-NPP	76.31116	30.17943	14:12:00	D	1.60
687	PATIALA	PATIALA	S-NPP	76.58405	30.20175	14:12:00	D	11.60
688	PATIALA	PATIALA	S-NPP	76.58305	30.20430	14:12:00	D	6.40
689	PATIALA	PATIALA	S-NPP	76.58793	30.20462	14:12:00	D	6.40
690	PATIALA	PATIALA	S-NPP	76.52863	30.21257	14:12:00	D	10.70

691	PATIALA	PATIALA	S-NPP	76.52907	30.21626	14:12:00	D	11.60
692	PATIALA	PATIALA	S-NPP	76.57162	30.22044	12:30:00	D	2.50
693	PATIALA	PATIALA	S-NPP	76.41743	30.22122	14:12:00	D	3.70
694	PATIALA	PATIALA	S-NPP	76.44569	30.22888	14:12:00	D	2.20
695	PATIALA	PATIALA	S-NPP	76.54272	30.22896	14:12:00	D	2.40
696	PATIALA	PATIALA	S-NPP	76.38828	30.28352	14:12:00	D	6.30
697	PATIALA	PATIALA	S-NPP	76.38857	30.28414	14:12:00	D	4.70
698	PATIALA	PATIALA	S-NPP	76.27860	30.29437	14:12:00	D	4.90
699	PATIALA	PATIALA	S-NPP	76.27808	30.29443	14:12:00	D	3.20
700	PATIALA	PATIALA	S-NPP	76.52471	30.40813	14:12:00	D	4.20
701	PATIALA	PATIALA	S-NPP	76.52390	30.41022	14:12:00	D	7.30
702	PATIALA	RAJPURA	S-NPP	76.65025	30.30487	14:12:00	D	6.00
703	PATIALA	RAJPURA	S-NPP	76.64526	30.30684	14:12:00	D	5.90
704	PATIALA	RAJPURA	S-NPP	76.64485	30.31054	14:12:00	D	8.20
705	PATIALA	RAJPURA	S-NPP	76.54082	30.31629	14:12:00	D	3.10
706	PATIALA	RAJPURA	S-NPP	76.54096	30.31788	14:12:00	D	4.20
707	PATIALA	RAJPURA	S-NPP	76.54037	30.32220	14:12:00	D	3.20
708	PATIALA	RAJPURA	S-NPP	76.62050	30.37033	12:30:00	D	1.90
709	PATIALA	RAJPURA	S-NPP	76.59957	30.38534	14:12:00	D	19.10
710	PATIALA	RAJPURA	TERRA	76.63000	30.39300	11:20:00	D	7.70
711	PATIALA	RAJPURA	S-NPP	76.64024	30.43398	12:30:00	D	3.20
712	PATIALA	RAJPURA	S-NPP	76.50607	30.46042	14:12:00	D	5.30
713	PATIALA	RAJPURA	S-NPP	76.50563	30.46633	14:12:00	D	5.30
714	PATIALA	RAJPURA	TERRA	76.72900	30.47900	11:20:00	D	4.90
715	PATIALA	RAJPURA	S-NPP	76.55251	30.52079	14:12:00	D	2.20
716	PATIALA	RAJPURA	S-NPP	76.59416	30.53271	12:36:00	D	3.90
717	PATIALA	RAJPURA	S-NPP	76.55663	30.54222	12:36:00	D	4.90
718	PATIALA	RAJPURA	TERRA	76.59100	30.58100	11:20:00	D	21.80
719	PATIALA	RAJPURA	TERRA	76.59800	30.58400	11:20:00	D	12.90
720	PATIALA	RAJPURA	TERRA	76.58700	30.58600	11:20:00	D	11.80
721	PATIALA	RAJPURA	S-NPP	76.53688	30.59720	14:12:00	D	5.70
722	PATIALA	RAJPURA	S-NPP	76.52890	30.61235	12:36:00	D	2.10
723	PATIALA	SAMANA	S-NPP	76.17722	29.83893	14:12:00	D	6.60

724	PATIALA	SAMANA	S-NPP	76.20417	29.84658	14:12:00	D	7.40
725	PATIALA	SAMANA	S-NPP	76.20521	29.84734	14:12:00	D	9.90
726	PATIALA	SAMANA	S-NPP	76.13158	29.84947	12:30:00	D	3.10
727	PATIALA	SAMANA	S-NPP	76.15672	29.87903	14:12:00	D	2.90
728	PATIALA	SAMANA	S-NPP	76.09682	29.88667	14:12:00	D	7.20
729	PATIALA	SAMANA	S-NPP	76.16444	29.89690	14:12:00	D	2.20
730	PATIALA	SAMANA	S-NPP	76.15030	29.90176	14:12:00	D	10.20
731	PATIALA	SAMANA	S-NPP	76.15235	29.91547	12:30:00	D	6.90
732	PATIALA	SAMANA	TERRA	76.11900	29.91800	11:20:00	D	15.10
733	PATIALA	SAMANA	S-NPP	76.15156	29.91855	12:30:00	D	8.40
734	PATIALA	SAMANA	S-NPP	76.12117	29.92294	14:12:00	D	2.00
735	PATIALA	SAMANA	S-NPP	76.14388	29.92447	14:12:00	D	3.10
736	PATIALA	SAMANA	S-NPP	76.17125	29.92632	14:12:00	D	5.90
737	PATIALA	SAMANA	S-NPP	76.14340	29.93023	14:12:00	D	3.10
738	PATIALA	SAMANA	S-NPP	76.19847	29.98626	14:12:00	D	2.20
739	PATIALA	SAMANA	S-NPP	76.18417	30.02108	12:30:00	D	7.20
740	PATIALA	SAMANA	S-NPP	76.19611	30.07324	14:12:00	D	5.50
741	PATIALA	SAMANA	S-NPP	76.19738	30.07373	14:12:00	D	5.90
742	PATIALA	SAMANA	S-NPP	76.27108	30.14766	12:30:00	D	5.70
743	PATIALA	SAMANA	S-NPP	76.26994	30.16523	14:12:00	D	4.50
744	PATIALA	SAMANA	S-NPP	76.26939	30.16578	14:12:00	D	4.00
745	PATIALA	SAMANA	S-NPP	76.19277	30.22476	12:30:00	D	6.40
746	PATIALA	SAMANA	S-NPP	76.19835	30.22624	12:30:00	D	8.00
747	SANGRUR	DHURI	S-NPP	75.90775	30.35604	12:36:00	D	4.50
748	SANGRUR	DHURI	S-NPP	75.85218	30.38829	12:36:00	D	8.60
749	SANGRUR	DHURI	S-NPP	75.84875	30.38916	12:36:00	D	5.70
750	SANGRUR	DHURI	S-NPP	75.99871	30.42791	14:12:00	D	2.80
751	SANGRUR	DHURI	S-NPP	75.78698	30.43654	14:12:00	D	6.20
752	SANGRUR	DHURI	S-NPP	75.79138	30.43684	14:12:00	D	6.20
753	SANGRUR	MALERKOTLA	S-NPP	75.84750	30.54673	12:36:00	D	4.10
754	SANGRUR	MALERKOTLA	S-NPP	76.03741	30.58782	14:12:00	D	5.00
755	SANGRUR	MALERKOTLA	S-NPP	76.03747	30.58827	14:12:00	D	4.70
756	SANGRUR	MALERKOTLA	S-NPP	75.87324	30.64678	14:12:00	D	4.30

757	SANGRUR	MALERKOTLA	S-NPP	75.87945	30.66607	14:12:00	D	10.30
758	SANGRUR	MALERKOTLA	S-NPP	75.87587	30.66990	14:12:00	D	6.80
759	SANGRUR	MOONAK	S-NPP	75.93471	29.77636	14:12:00	D	1.90
760	SANGRUR	MOONAK	S-NPP	75.82528	29.82564	14:12:00	D	2.70
761	SANGRUR	MOONAK	S-NPP	75.82561	29.82878	14:12:00	D	3.70
762	SANGRUR	MOONAK	S-NPP	75.80202	29.84990	14:12:00	D	2.80
763	SANGRUR	MOONAK	S-NPP	75.80153	29.85554	14:12:00	D	8.00
764	SANGRUR	MOONAK	S-NPP	76.00333	29.85556	12:30:00	D	7.00
765	SANGRUR	MOONAK	S-NPP	75.91359	29.88017	14:12:00	D	3.10
766	SANGRUR	SANGRUR	S-NPP	75.89226	30.21184	12:30:00	D	3.30
767	SANGRUR	SUNAM	S-NPP	75.68700	29.92432	14:12:00	D	4.20
768	SANGRUR	SUNAM	S-NPP	75.68752	29.92668	14:12:00	D	3.50
769	SANGRUR	SUNAM	S-NPP	75.64786	29.94065	14:12:00	D	2.30
770	SANGRUR	SUNAM	S-NPP	75.65872	29.94227	12:30:00	D	5.20
771	SANGRUR	SUNAM	TERRA	75.96000	29.96900	11:20:00	D	6.20
772	SANGRUR	SUNAM	S-NPP	76.07430	30.11790	14:12:00	D	4.00
773	SANGRUR	SUNAM	S-NPP	75.66250	30.11802	14:12:00	D	3.30
774	SANGRUR	SUNAM	S-NPP	75.92565	30.15321	12:30:00	D	10.30
775	SAS NAGAR	DERABASSI	S-NPP	76.83278	30.51054	14:12:00	D	4.30
776	SAS NAGAR	DERABASSI	S-NPP	76.77550	30.56125	12:36:00	D	6.80
777	SAS NAGAR	KHARAR	S-NPP	76.55138	30.69581	12:36:00	D	3.10
778	SAS NAGAR	KHARAR	S-NPP	76.60307	30.77452	14:12:00	D	4.10
779	SAS NAGAR	KHARAR	S-NPP	76.67654	30.79691	14:12:00	D	2.60
780	SAS NAGAR	MOHALI	S-NPP	76.71458	30.60931	12:36:00	D	8.70
781	SAS NAGAR	MOHALI	S-NPP	76.71971	30.61064	12:36:00	D	8.70
782	SBS NAGAR	BALACHAUR	S-NPP	76.27398	31.07684	02:54:00	N	0.50
783	TARN TARAN	KHADOOR SAHIB	TERRA	75.01100	31.22300	11:20:00	D	4.90
784	TARN TARAN	KHADOOR SAHIB	S-NPP	74.99837	31.22640	14:12:00	D	1.50
785	TARN TARAN	KHADOOR SAHIB	S-NPP	75.04707	31.22991	14:12:00	D	3.70
786	TARN TARAN	KHADOOR SAHIB	S-NPP	75.02622	31.23390	14:12:00	D	7.90
787	TARN TARAN	KHADOOR SAHIB	S-NPP	74.96339	31.23451	12:36:00	D	4.90
788	TARN TARAN	KHADOOR SAHIB	S-NPP	74.96547	31.23626	12:36:00	D	4.60
789	TARN TARAN	KHADOOR SAHIB	S-NPP	75.01358	31.23847	14:12:00	D	3.60

790	TARN TARAN	KHADOOR SAHIB	S-NPP	75.01762	31.23877	14:12:00	D	6.60
791	TARN TARAN	KHADOOR SAHIB	S-NPP	75.01356	31.23966	14:12:00	D	4.00
792	TARN TARAN	KHADOOR SAHIB	S-NPP	75.04207	31.24154	14:12:00	D	5.00
793	TARN TARAN	KHADOOR SAHIB	S-NPP	75.06249	31.24202	14:12:00	D	3.90
794	TARN TARAN	KHADOOR SAHIB	S-NPP	75.03748	31.24571	14:12:00	D	1.90
795	TARN TARAN	KHADOOR SAHIB	S-NPP	75.04155	31.24600	14:12:00	D	4.90
796	TARN TARAN	KHADOOR SAHIB	S-NPP	75.03749	31.24674	14:12:00	D	3.90
797	TARN TARAN	KHADOOR SAHIB	S-NPP	74.93559	31.24918	14:12:00	D	10.70
798	TARN TARAN	KHADOOR SAHIB	S-NPP	74.93539	31.25085	14:12:00	D	10.70
799	TARN TARAN	KHADOOR SAHIB	S-NPP	75.03699	31.25117	14:12:00	D	1.90
800	TARN TARAN	KHADOOR SAHIB	S-NPP	74.98385	31.25275	14:12:00	D	2.70
801	TARN TARAN	KHADOOR SAHIB	S-NPP	74.98372	31.25412	14:12:00	D	2.60
802	TARN TARAN	KHADOOR SAHIB	S-NPP	74.97088	31.25858	12:36:00	D	7.20
803	TARN TARAN	KHADOOR SAHIB	S-NPP	74.97505	31.25867	12:36:00	D	11.80
804	TARN TARAN	KHADOOR SAHIB	S-NPP	74.97708	31.26028	12:36:00	D	9.90
805	TARN TARAN	KHADOOR SAHIB	S-NPP	74.96206	31.26907	14:12:00	D	9.50
806	TARN TARAN	KHADOOR SAHIB	S-NPP	75.06412	31.27052	14:12:00	D	3.20
807	TARN TARAN	KHADOOR SAHIB	S-NPP	75.02232	31.27868	14:12:00	D	2.00
808	TARN TARAN	KHADOOR SAHIB	S-NPP	74.95302	31.27939	14:12:00	D	4.20
809	TARN TARAN	KHADOOR SAHIB	S-NPP	74.99147	31.30399	14:12:00	D	5.30
810	TARN TARAN	KHADOOR SAHIB	S-NPP	75.06435	31.31459	14:12:00	D	5.10
811	TARN TARAN	KHADOOR SAHIB	S-NPP	75.06789	31.31931	12:36:00	D	5.60
812	TARN TARAN	KHADOOR SAHIB	S-NPP	75.13401	31.32498	14:12:00	D	3.30
813	TARN TARAN	KHADOOR SAHIB	S-NPP	75.02206	31.32811	14:12:00	D	6.10
814	TARN TARAN	KHADOOR SAHIB	S-NPP	75.06328	31.33183	12:36:00	D	6.20
815	TARN TARAN	KHADOOR SAHIB	S-NPP	75.06940	31.33354	12:36:00	D	6.20
816	TARN TARAN	KHADOOR SAHIB	TERRA	75.07200	31.33400	11:20:00	D	14.30
817	TARN TARAN	KHADOOR SAHIB	S-NPP	75.07014	31.34255	14:12:00	D	8.00
818	TARN TARAN	KHADOOR SAHIB	S-NPP	74.96741	31.34612	14:12:00	D	3.60
819	TARN TARAN	KHADOOR SAHIB	S-NPP	74.96526	31.35283	12:36:00	D	3.30
820	TARN TARAN	KHADOOR SAHIB	S-NPP	74.94630	31.35553	14:12:00	D	2.60
821	TARN TARAN	KHADOOR SAHIB	S-NPP	75.11366	31.35659	14:12:00	D	3.90
822	TARN TARAN	KHADOOR SAHIB	S-NPP	75.11443	31.35676	14:12:00	D	3.20

823	TARN TARAN	KHADOOR SAHIB	S-NPP	74.81480	31.37473	14:12:00	D	6.50
824	TARN TARAN	KHADOOR SAHIB	S-NPP	74.79404	31.38413	14:12:00	D	3.70
825	TARN TARAN	KHADOOR SAHIB	TERRA	74.93400	31.40100	11:20:00	D	9.40
826	TARN TARAN	KHADOOR SAHIB	S-NPP	75.11806	31.40110	14:12:00	D	4.10
827	TARN TARAN	KHADOOR SAHIB	S-NPP	74.95558	31.42285	14:12:00	D	4.10
828	TARN TARAN	KHADOOR SAHIB	S-NPP	74.89016	31.42910	14:12:00	D	5.30
829	TARN TARAN	KHADOOR SAHIB	S-NPP	74.78967	31.43266	14:12:00	D	2.00
830	TARN TARAN	KHADOOR SAHIB	S-NPP	74.78948	31.43496	14:12:00	D	3.40
831	TARN TARAN	KHADOOR SAHIB	S-NPP	74.88922	31.43995	14:12:00	D	2.70
832	TARN TARAN	KHADOOR SAHIB	S-NPP	74.76822	31.44979	14:12:00	D	2.60
833	TARN TARAN	KHADOOR SAHIB	S-NPP	74.99377	31.45302	14:12:00	D	4.50
834	TARN TARAN	KHADOOR SAHIB	S-NPP	74.99394	31.45403	14:12:00	D	4.80
835	TARN TARAN	KHADOOR SAHIB	S-NPP	74.87975	31.45563	14:12:00	D	5.10
836	TARN TARAN	KHADOOR SAHIB	S-NPP	74.88376	31.45593	14:12:00	D	13.20
837	TARN TARAN	KHADOOR SAHIB	S-NPP	74.87970	31.45736	14:12:00	D	11.40
838	TARN TARAN	KHADOOR SAHIB	S-NPP	74.88372	31.45763	14:12:00	D	11.40
839	TARN TARAN	KHADOOR SAHIB	S-NPP	74.87927	31.46105	14:12:00	D	5.10
840	TARN TARAN	KHADOOR SAHIB	S-NPP	75.06724	31.46435	14:12:00	D	1.90
841	TARN TARAN	KHADOOR SAHIB	S-NPP	75.17146	31.46560	14:12:00	D	6.60
842	TARN TARAN	KHADOOR SAHIB	S-NPP	75.17101	31.46572	14:12:00	D	3.10
843	TARN TARAN	KHADOOR SAHIB	S-NPP	75.17520	31.46601	14:12:00	D	3.10
844	TARN TARAN	KHADOOR SAHIB	S-NPP	75.04298	31.47131	12:36:00	D	7.60
845	TARN TARAN	KHADOOR SAHIB	S-NPP	75.05708	31.48574	14:12:00	D	2.60
846	TARN TARAN	KHADOOR SAHIB	S-NPP	75.08086	31.49837	14:12:00	D	4.50
847	TARN TARAN	KHADOOR SAHIB	S-NPP	74.87979	31.50103	14:12:00	D	2.70
848	TARN TARAN	KHADOOR SAHIB	S-NPP	74.72784	31.50113	14:12:00	D	9.50
849	TARN TARAN	KHADOOR SAHIB	S-NPP	75.08037	31.50386	14:12:00	D	4.50
850	TARN TARAN	KHADOOR SAHIB	S-NPP	74.87931	31.50646	14:12:00	D	4.90
851	TARN TARAN	KHADOOR SAHIB	S-NPP	74.72967	31.53580	14:12:00	D	2.90
852	TARN TARAN	KHADOOR SAHIB	S-NPP	74.79211	31.53833	14:12:00	D	2.00
853	TARN TARAN	KHADOOR SAHIB	S-NPP	74.79863	31.55511	14:12:00	D	9.80
854	TARN TARAN	KHADOOR SAHIB	S-NPP	74.79552	31.55651	14:12:00	D	6.10
855	TARN TARAN	KHADOOR SAHIB	S-NPP	74.79950	31.55679	14:12:00	D	6.10

856	TARN TARAN	PATTI	S-NPP	74.71285	31.11655	14:12:00	D	4.90
857	TARN TARAN	PATTI	S-NPP	74.71344	31.11930	14:12:00	D	11.30
858	TARN TARAN	PATTI	S-NPP	74.71236	31.12190	14:12:00	D	4.90
859	TARN TARAN	PATTI	S-NPP	74.71625	31.12219	14:12:00	D	12.90
860	TARN TARAN	PATTI	S-NPP	74.75135	31.13273	14:12:00	D	1.30
861	TARN TARAN	PATTI	S-NPP	74.68436	31.13881	14:12:00	D	2.90
862	TARN TARAN	PATTI	S-NPP	74.73476	31.14236	14:12:00	D	4.70
863	TARN TARAN	PATTI	S-NPP	74.75616	31.14298	12:36:00	D	6.10
864	TARN TARAN	PATTI	TERRA	74.80900	31.14300	11:20:00	D	4.70
865	TARN TARAN	PATTI	S-NPP	74.75423	31.14373	14:12:00	D	7.70
866	TARN TARAN	PATTI	S-NPP	74.75814	31.14400	14:12:00	D	7.70
867	TARN TARAN	PATTI	S-NPP	74.81693	31.14811	14:12:00	D	12.50
868	TARN TARAN	PATTI	S-NPP	74.82086	31.14838	14:12:00	D	12.50
869	TARN TARAN	PATTI	S-NPP	74.52942	31.14907	14:12:00	D	3.90
870	TARN TARAN	PATTI	S-NPP	74.75765	31.14937	14:12:00	D	5.10
871	TARN TARAN	PATTI	S-NPP	74.71432	31.15170	14:12:00	D	2.20
872	TARN TARAN	PATTI	S-NPP	74.80858	31.15295	14:12:00	D	2.80
873	TARN TARAN	PATTI	S-NPP	74.81644	31.15350	14:12:00	D	3.40
874	TARN TARAN	PATTI	S-NPP	74.82039	31.15378	14:12:00	D	3.40
875	TARN TARAN	PATTI	S-NPP	74.52892	31.15436	14:12:00	D	3.90
876	TARN TARAN	PATTI	S-NPP	74.79236	31.15722	14:12:00	D	7.20
877	TARN TARAN	PATTI	S-NPP	74.72549	31.15788	14:12:00	D	3.00
878	TARN TARAN	PATTI	S-NPP	74.72743	31.16312	12:36:00	D	6.70
879	TARN TARAN	PATTI	TERRA	74.82000	31.16900	11:20:00	D	7.20
880	TARN TARAN	PATTI	S-NPP	74.61539	31.17141	14:12:00	D	2.00
881	TARN TARAN	PATTI	S-NPP	74.83802	31.17672	14:12:00	D	6.70
882	TARN TARAN	PATTI	S-NPP	74.64175	31.17872	14:12:00	D	1.60
883	TARN TARAN	PATTI	TERRA	74.63900	31.17900	11:20:00	D	6.80
884	TARN TARAN	PATTI	S-NPP	74.54539	31.18227	14:12:00	D	3.20
885	TARN TARAN	PATTI	S-NPP	74.83207	31.19801	14:12:00	D	1.80
886	TARN TARAN	PATTI	S-NPP	74.59031	31.19926	12:36:00	D	7.80
887	TARN TARAN	PATTI	TERRA	74.60100	31.20300	11:20:00	D	4.80
888	TARN TARAN	PATTI	S-NPP	74.65849	31.20682	14:12:00	D	2.80

889	TARN TARAN	PATTI	S-NPP	74.63425	31.21399	14:12:00	D	2.40
890	TARN TARAN	PATTI	S-NPP	74.63446	31.21575	14:12:00	D	2.20
891	TARN TARAN	PATTI	S-NPP	74.56522	31.21583	14:12:00	D	2.70
892	TARN TARAN	PATTI	S-NPP	74.64915	31.22039	14:12:00	D	15.40
893	TARN TARAN	PATTI	S-NPP	74.93797	31.22203	14:12:00	D	7.40
894	TARN TARAN	PATTI	S-NPP	74.64935	31.22225	14:12:00	D	17.10
895	TARN TARAN	PATTI	S-NPP	74.53389	31.22409	14:12:00	D	4.60
896	TARN TARAN	PATTI	S-NPP	74.53769	31.22439	14:12:00	D	5.80
897	TARN TARAN	PATTI	S-NPP	74.53298	31.22828	14:12:00	D	7.70
898	TARN TARAN	PATTI	S-NPP	74.53680	31.22855	14:12:00	D	9.00
899	TARN TARAN	PATTI	S-NPP	74.77750	31.22923	14:12:00	D	5.00
900	TARN TARAN	PATTI	S-NPP	74.77750	31.23194	14:12:00	D	5.20
901	TARN TARAN	PATTI	S-NPP	74.58807	31.23844	12:36:00	D	6.70
902	TARN TARAN	PATTI	S-NPP	74.58894	31.24141	12:36:00	D	8.00
903	TARN TARAN	PATTI	S-NPP	74.61401	31.24587	12:36:00	D	7.00
904	TARN TARAN	PATTI	S-NPP	74.64227	31.25213	14:12:00	D	10.10
905	TARN TARAN	PATTI	TERRA	74.63300	31.25300	11:20:00	D	14.50
906	TARN TARAN	PATTI	S-NPP	74.58167	31.26062	12:36:00	D	7.30
907	TARN TARAN	PATTI	S-NPP	74.57848	31.26408	12:36:00	D	8.10
908	TARN TARAN	PATTI	S-NPP	74.61007	31.26592	14:12:00	D	2.60
909	TARN TARAN	PATTI	S-NPP	74.58498	31.26594	12:36:00	D	8.10
910	TARN TARAN	PATTI	S-NPP	74.73392	31.27484	14:12:00	D	1.90
911	TARN TARAN	PATTI	S-NPP	74.62444	31.27770	14:12:00	D	3.50
912	TARN TARAN	PATTI	TERRA	74.76300	31.28000	11:20:00	D	6.10
913	TARN TARAN	PATTI	S-NPP	74.82827	31.28156	14:12:00	D	1.60
914	TARN TARAN	PATTI	S-NPP	74.72465	31.29038	14:12:00	D	6.60
915	TARN TARAN	PATTI	S-NPP	74.73197	31.29631	14:12:00	D	6.60
916	TARN TARAN	PATTI	S-NPP	74.73588	31.29660	14:12:00	D	6.60
917	TARN TARAN	PATTI	S-NPP	74.59509	31.30235	14:12:00	D	5.40
918	TARN TARAN	PATTI	TERRA	74.64100	31.31700	11:20:00	D	5.60
919	TARN TARAN	PATTI	S-NPP	74.59589	31.32170	14:12:00	D	2.50
920	TARN TARAN	PATTI	S-NPP	74.64164	31.33025	14:12:00	D	4.30
921	TARN TARAN	PATTI	S-NPP	74.90004	31.33028	14:12:00	D	1.50

922	TARN TARAN	PATTI	S-NPP	74.64264	31.33278	14:12:00	D	2.70
923	TARN TARAN	PATTI	S-NPP	74.77036	31.33911	14:12:00	D	2.10
924	TARN TARAN	PATTI	S-NPP	74.77119	31.34249	14:12:00	D	2.40
925	TARN TARAN	PATTI	S-NPP	74.66725	31.34818	14:12:00	D	4.40
926	TARN TARAN	PATTI	S-NPP	74.88562	31.35649	14:12:00	D	1.60
927	TARN TARAN	PATTI	S-NPP	74.57321	31.35761	14:12:00	D	4.30
928	TARN TARAN	PATTI	S-NPP	74.88445	31.35777	14:12:00	D	2.70
929	TARN TARAN	PATTI	TERRA	74.68900	31.36500	11:20:00	D	5.70
930	TARN TARAN	PATTI	S-NPP	74.71493	31.38391	14:12:00	D	5.20
931	TARN TARAN	PATTI	S-NPP	74.73745	31.39635	14:12:00	D	3.30
932	TARN TARAN	PATTI	S-NPP	74.64634	31.40588	14:12:00	D	6.70
933	TARN TARAN	PATTI	TERRA	74.65700	31.41600	11:20:00	D	8.50

Details of residue burning events in Haryana on 20-Oct-2020

S. No.	District	Tehsil / Block	Satellite	Longitude	Latitude	Time (IST)	Day / Night	Fire Power (W/m2)
1	AMBALA	AMBALA	S-NPP	76.64043	30.16035	14:12:00	D	7.10
2	AMBALA	AMBALA	TERRA	76.65200	30.19000	11:20:00	D	7.00
3	AMBALA	AMBALA	S-NPP	76.66857	30.19478	14:12:00	D	2.30
4	AMBALA	AMBALA	S-NPP	76.55735	30.22985	14:12:00	D	3.20
5	AMBALA	AMBALA	S-NPP	76.85791	30.26329	12:30:00	D	7.50
6	AMBALA	AMBALA	S-NPP	76.58394	30.26717	14:12:00	D	2.40
7	AMBALA	AMBALA	S-NPP	76.60175	30.26733	12:30:00	D	2.40
8	AMBALA	AMBALA	S-NPP	76.73146	30.28837	14:12:00	D	16.10
9	AMBALA	AMBALA	TERRA	76.70100	30.29800	11:20:00	D	6.80
10	AMBALA	AMBALA	S-NPP	76.77302	30.29891	12:30:00	D	4.00
11	AMBALA	AMBALA	S-NPP	76.77450	30.30117	12:30:00	D	6.10
12	AMBALA	AMBALA	S-NPP	76.70989	30.30186	12:30:00	D	4.00
13	AMBALA	AMBALA	S-NPP	76.71511	30.30321	12:30:00	D	4.00
14	AMBALA	AMBALA	S-NPP	76.71159	30.30379	12:30:00	D	8.10
15	AMBALA	AMBALA	TERRA	76.70300	30.30800	11:20:00	D	6.80
16	AMBALA	AMBALA	S-NPP	77.01613	30.31806	14:12:00	D	16.50
17	AMBALA	AMBALA	S-NPP	77.01636	30.31952	14:12:00	D	19.10
18	AMBALA	AMBALA	S-NPP	76.70035	30.32019	12:30:00	D	5.70
19	AMBALA	BARARA	S-NPP	77.09415	30.25546	14:12:00	D	2.20
20	AMBALA	BARARA	S-NPP	77.11829	30.28747	14:12:00	D	7.10
21	AMBALA	NARAYANGARH	S-NPP	76.95067	30.38607	12:30:00	D	2.10
22	FATEHABAD	RATIA	S-NPP	75.65159	29.67451	14:12:00	D	6.60
23	FATEHABAD	RATIA	S-NPP	75.65579	29.67482	14:12:00	D	10.40
24	FATEHABAD	TOHANA	S-NPP	75.86900	29.64448	14:12:00	D	3.30
25	FATEHABAD	TOHANA	S-NPP	75.81483	29.72012	14:12:00	D	3.20
26	FATEHABAD	TOHANA	S-NPP	75.81225	29.72266	14:12:00	D	2.60
27	HISAR	HISAR	S-NPP	75.82639	29.41601	12:30:00	D	3.00
28	HISAR	HISAR	S-NPP	75.82843	29.41633	12:30:00	D	3.70
29	HISAR	NARNAUND	S-NPP	76.04046	29.24136	14:12:00	D	4.00
30	JIND	JIND	S-NPP	76.44575	29.44907	14:12:00	D	2.10

31	JIND	NARWANA	S-NPP	76.14515	29.62694	14:12:00	D	1.70
32	KAITHAL	GUHLA	S-NPP	76.17581	29.92662	14:12:00	D	10.70
33	KAITHAL	GUHLA	S-NPP	76.39257	29.94583	12:30:00	D	3.00
34	KAITHAL	GUHLA	S-NPP	76.20392	29.94614	12:30:00	D	3.30
35	KAITHAL	GUHLA	TERRA	76.30200	29.96100	11:20:00	D	4.50
36	KAITHAL	GUHLA	S-NPP	76.20306	29.98656	14:12:00	D	2.20
37	KAITHAL	GUHLA	S-NPP	76.24730	30.05113	12:30:00	D	3.20
38	KAITHAL	GUHLA	S-NPP	76.40775	30.07005	14:12:00	D	5.30
39	KAITHAL	GUHLA	S-NPP	76.26276	30.07197	14:12:00	D	3.70
40	KAITHAL	GUHLA	S-NPP	76.32066	30.09349	14:12:00	D	7.30
41	KAITHAL	GUHLA	S-NPP	76.44481	30.09498	12:30:00	D	2.90
42	KAITHAL	KAITHAL	S-NPP	76.51933	29.53609	14:12:00	D	3.60
43	KAITHAL	KAITHAL	S-NPP	76.45507	29.57914	12:30:00	D	3.00
44	KAITHAL	KAITHAL	S-NPP	76.64058	29.67642	14:12:00	D	2.40
45	KAITHAL	KAITHAL	TERRA	76.64200	29.71900	11:20:00	D	8.40
46	KAITHAL	KAITHAL	TERRA	76.66300	29.78800	11:20:00	D	10.20
47	KAITHAL	KAITHAL	S-NPP	76.68615	29.87438	12:30:00	D	7.20
48	KAITHAL	KAITHAL	S-NPP	76.31712	29.91916	12:30:00	D	8.10
49	KAITHAL	KAITHAL	TERRA	76.46400	29.92400	11:20:00	D	10.10
50	KARNAL	ASSANDH	S-NPP	76.54336	29.47282	14:12:00	D	3.00
51	KARNAL	ASSANDH	S-NPP	76.54202	29.47359	14:12:00	D	2.60
52	KARNAL	ASSANDH	S-NPP	76.73449	29.56815	14:12:00	D	10.00
53	KARNAL	ASSANDH	S-NPP	76.72996	29.57099	14:12:00	D	5.80
54	KARNAL	ASSANDH	S-NPP	76.73486	29.57129	14:12:00	D	5.80
55	KARNAL	GHARAUNDA	S-NPP	76.94643	29.53370	14:12:00	D	8.50
56	KARNAL	INDRI	S-NPP	77.12064	29.93096	14:12:00	D	2.00
57	KARNAL	INDRI	S-NPP	77.08112	29.93128	12:30:00	D	2.90
58	KARNAL	KARNAL	S-NPP	76.96663	29.61518	14:12:00	D	2.30
59	KARNAL	KARNAL	S-NPP	76.74947	29.63785	14:12:00	D	1.70
60	KARNAL	KARNAL	TERRA	76.86600	29.64000	11:20:00	D	8.60
61	KARNAL	KARNAL	S-NPP	76.78905	29.67452	12:30:00	D	2.70
62	KARNAL	KARNAL	S-NPP	76.94680	29.68936	12:30:00	D	3.80
63	KARNAL	KARNAL	S-NPP	77.08698	29.69052	14:12:00	D	3.10

64	KARNAL	KARNAL	S-NPP	77.04121	29.71518	12:30:00	D	4.70
65	KARNAL	KARNAL	S-NPP	76.74635	29.71546	12:30:00	D	2.90
66	KARNAL	KARNAL	S-NPP	76.80013	29.71596	14:12:00	D	4.00
67	KARNAL	KARNAL	S-NPP	77.04263	29.72042	12:30:00	D	8.10
68	KARNAL	KARNAL	S-NPP	76.78503	29.74425	12:30:00	D	7.50
69	KARNAL	KARNAL	S-NPP	76.78271	29.74447	12:30:00	D	8.00
70	KARNAL	KARNAL	S-NPP	76.97576	29.79447	12:30:00	D	3.90
71	KARNAL	KARNAL	S-NPP	76.97742	29.79537	12:30:00	D	5.00
72	KARNAL	NILOKHERI	S-NPP	76.86285	29.77820	12:30:00	D	1.70
73	KARNAL	NILOKHERI	S-NPP	76.94162	29.77921	12:30:00	D	3.00
74	KARNAL	NILOKHERI	S-NPP	76.93902	29.81502	14:12:00	D	3.70
75	KARNAL	NILOKHERI	S-NPP	76.93745	29.81641	14:12:00	D	5.40
76	KARNAL	NILOKHERI	S-NPP	76.85358	29.85357	14:12:00	D	3.50
77	KURUKSHETRA	PEHOWA	TERRA	76.47600	29.92200	11:20:00	D	7.50
78	KURUKSHETRA	PEHOWA	S-NPP	76.68864	29.94821	14:12:00	D	6.20
79	KURUKSHETRA	PEHOWA	S-NPP	76.51196	29.96065	14:12:00	D	6.50
80	KURUKSHETRA	PEHOWA	TERRA	76.68000	29.98000	11:20:00	D	11.90
81	KURUKSHETRA	PEHOWA	TERRA	76.67300	30.00200	11:20:00	D	7.10
82	KURUKSHETRA	PEHOWA	TERRA	76.66100	30.00400	11:20:00	D	7.30
83	KURUKSHETRA	PEHOWA	S-NPP	76.75336	30.11337	14:12:00	D	8.90
84	KURUKSHETRA	PEHOWA	S-NPP	76.75117	30.11642	14:12:00	D	6.40
85	KURUKSHETRA	PEHOWA	S-NPP	76.75616	30.11675	14:12:00	D	10.40
86	KURUKSHETRA	SHAHABAD	S-NPP	76.77747	30.12680	14:12:00	D	4.60
87	KURUKSHETRA	THANESAR	S-NPP	76.79593	29.88599	14:12:00	D	2.20
88	KURUKSHETRA	THANESAR	S-NPP	76.95585	29.91436	14:12:00	D	1.80
89	KURUKSHETRA	THANESAR	S-NPP	77.10146	29.96829	12:30:00	D	2.80
90	MEWAT	TAORU	S-NPP	76.92452	28.18941	01:18:00	N	0.60
91	PANCHKULA	PANCHKULA	S-NPP	76.90553	30.43003	14:12:00	D	2.60
92	PANIPAT	SAMALKHA	S-NPP	76.96447	29.25156	02:54:00	N	1.00
93	SIRSA	DABWALI	S-NPP	74.94464	29.90541	01:18:00	N	1.30
94	SIRSA	DABWALI	S-NPP	74.94516	29.91210	01:18:00	N	1.30
95	SIRSA	SIRSA	TERRA	74.97900	29.44400	11:20:00	D	8.50
96	SIRSA	SIRSA	S-NPP	75.14852	29.68107	14:12:00	D	5.20

97	SIRSA	SIRSA	S-NPP	75.14552	29.68231	14:12:00	D	3.50
98	SIRSA	SIRSA	S-NPP	75.17939	29.70111	14:12:00	D	14.80
99	SIRSA	SIRSA	TERRA	75.08900	29.90700	11:20:00	D	10.10
100	SONIPAT	KHARKHODA	S-NPP	76.96555	28.83126	01:18:00	N	1.90
101	SONIPAT	KHARKHODA	S-NPP	76.96901	28.83323	01:18:00	N	1.80
102	YAMUNANAGAR	CHHACHHRAULII	S-NPP	77.32750	30.22523	12:30:00	D	3.80
103	YAMUNANAGAR	JAGADHRI	S-NPP	77.20647	30.32339	14:12:00	D	5.50
104	YAMUNANAGAR	JAGADHRI	S-NPP	77.20700	30.32368	14:12:00	D	5.60

Details of residue burning events in Uttar Pradesh on 20-Oct-2020

S. No.	District	Tehsil / Block	Satellite	Longitude	Latitude	Time (IST)	Day / Night	Fire Power (W/m ²)
1	ALIGARH	GABHANA	S-NPP	77.93169	28.04248	02:54:00	N	0.50
2	ALIGARH	KHAIR	S-NPP	77.79513	28.08989	01:18:00	N	0.60
3	ALIGARH	KOL	S-NPP	78.17049	27.96663	01:18:00	N	1.50
4	BAHRAICH	BAHRAICH	S-NPP	81.79118	27.47981	01:18:00	N	0.90
5	BARABANKI	SIRAOULI GAUSPUR	S-NPP	81.47914	26.94816	01:18:00	N	1.10
6	BARABANKI	SIRAOULI GAUSPUR	S-NPP	81.48206	26.94821	01:18:00	N	0.80
7	BAREILLY	BAHERI	S-NPP	79.53849	28.83797	01:18:00	N	0.40
8	BULANDSAHAR	SHIKARPUR	S-NPP	78.12857	28.29658	01:18:00	N	1.00
9	ETAH	ETAH	S-NPP	78.52697	27.53613	01:18:00	N	0.70
10	ETAH	ETAH	S-NPP	78.52747	27.53932	01:18:00	N	0.30
11	FIROZABAD	SIKOHABAD	S-NPP	78.63501	27.05591	12:30:00	D	7.80
12	FIROZABAD	SIKOHABAD	S-NPP	78.63966	27.05707	12:30:00	D	7.80
13	FIROZABAD	SIKOHABAD	S-NPP	78.63329	27.05710	12:30:00	D	9.90
14	FIROZABAD	SIKOHABAD	S-NPP	78.63795	27.05823	12:30:00	D	9.90
15	FIROZABAD	SIKOHABAD	S-NPP	78.63329	27.06168	12:30:00	D	7.80
16	HARDOI	BILGRAM	S-NPP	80.24174	27.11315	12:30:00	D	2.00
17	HARDOI	HARDOI	S-NPP	80.06374	27.43299	01:18:00	N	2.00
18	KHERI	LAKHIMPUR	S-NPP	80.68649	27.87099	12:30:00	D	3.70
19	KHERI	LAKHIMPUR	S-NPP	80.68484	27.87205	12:30:00	D	3.10
20	KHERI	LAKHIMPUR	S-NPP	80.68824	27.87284	12:30:00	D	3.60
21	MAINPURI	BHOGAON	S-NPP	79.36883	26.98409	12:30:00	D	5.80
22	MAINPURI	MAINPURI	TERRA	78.78400	27.16900	22:20:00	N	4.90
23	MATHURA	MAHABAN	S-NPP	77.83353	27.48275	01:18:00	N	0.60
24	MATHURA	MAT	S-NPP	77.75760	27.71512	01:18:00	N	1.00
25	MATHURA	MAT	S-NPP	77.75940	27.71643	01:18:00	N	0.70
26	MATHURA	MAT	S-NPP	77.76416	27.73720	01:18:00	N	1.00
27	MATHURA	MATHURA	S-NPP	77.65609	27.25869	01:18:00	N	1.00
28	SHAHJAHANPUR	SHAHJAHANPUR	S-NPP	79.69310	27.75404	12:30:00	D	1.80
29	SHAHJAHANPUR	SHAHJAHANPUR	S-NPP	79.80440	27.88312	12:30:00	D	5.00
30	SHAHJAHANPUR	SHAHJAHANPUR	S-NPP	79.80140	27.88404	12:30:00	D	3.40
31	SHARANPUR	SHARANPUR	S-NPP	77.42001	30.07747	14:12:00	D	4.00

The study used images received from following Satellites at IARI Satellite Ground Station

S. No.	Satellite Name	Sensor	Resolution (meter)	Day / Night Passes
1.	Suomi NPP	VIIRS	375 / 750	Both
2.	Terra	MODIS	1000	Both
3.	Aqua	MODIS	1000	Both
4.	NOAA – 18	AVHRR	1000	Night
5.	NOAA – 19	AVHRR	1000	Night
6.	Metop - 1	AVHRR	1000	Night
7.	Metop - 2	AVHRR	1000	Night

Study Team

ICAR – HQ	Dr K. Alagusundaram	DDG (AG. ENGG.)	ddgengg@icar.org.in
	Dr S. Bhasker	ADG (NRM)	adgagroandaf@gmail.com
	Dr K.K. Singh	ADG (AG. ENGG.)	kanchansingh044@gmail.com
ICAR - IARI	Dr V.K. Sehgal	Professor & Nodal Scientist	iaricreams@gmail.com
	Dr Rajkumar Dhakar	Scientist	rajdhakar.iari@gmail.com
	Mr Rakeswer Verma	Chief Technical Officer	rakeshwar.verma@icar.gov.in
	Mr Mohd Jahangir	Lab Assistant (KRISHI)	mjahangir198@gmail.com
ICAR - ATARI	Dr Rajbir Singh	Director ATARI (Zone-I) Ludhiana	rajbirsingh.zpd@gmail.com
	Dr S.K. Singh	Director ATARI (Zone-II) Jodhpur	sushilsinghiipr@yahoo.co.in
	Dr Atar Singh	Director ATARI (Zone-III) Kanpur	zpdicarkanpur@gmail.com
ICAR - IASRI	Dr Rajender Parsad	Director IASRI	rajender.parsad@icar.gov.in

Softcopy of this report and latest statistics can be seen on <http://creams.iari.res.in>

GIS Maps of fire events can be visualized online on ICAR KRISHI Geoportal website: <http://geoportal.icar.gov.in:8080/geoexplorer/composer/>

(Part of KRISHI Portal: <https://krishi.icar.gov.in> initiative)
