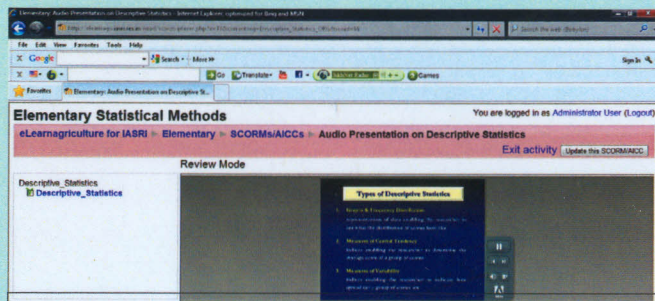


## Multimedia Enabled Presentations using ADOBE PRESENTER

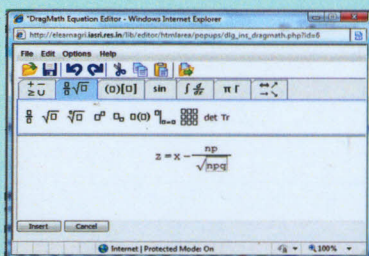
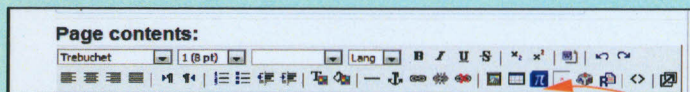
eLessons in the system have been enriched with multimedia enabled presentations. The presentations depict the whole lesson content in a brief and interactive way. Audio has been recorded in the voice of the teacher and uploaded in the system as SCORM (Sharable Content Object Reference Model). These presentations are very beneficial to the students in understanding the concepts very easily through graphics, animation and voice embedded with these presentations.



A sample Audio Presentation under eLearnAgriculture

## DragMath Equation Editor

An Equation Editor – DragMath was integrated with MOODLE for creating and editing mathematical equations. An icon  $\pi$  is the tool for opening the equation editor.



Dragmath equation Editor ( $\pi$ ) integrated with MOODLE Editor

An equation created using Dragmath Equation Editor in eLearnAgriculture

## eLearnAgriculture Team

Ms. Shashi Dahiya  
shashi@iasri.res.in  
Dr. Seema Jaggi  
seema@iasri.res.in

Dr. R.C. Goyal  
rcgoyal@iasri.res.in  
Ms. Anshu Bharadwaj  
anshu@iasri.res.in

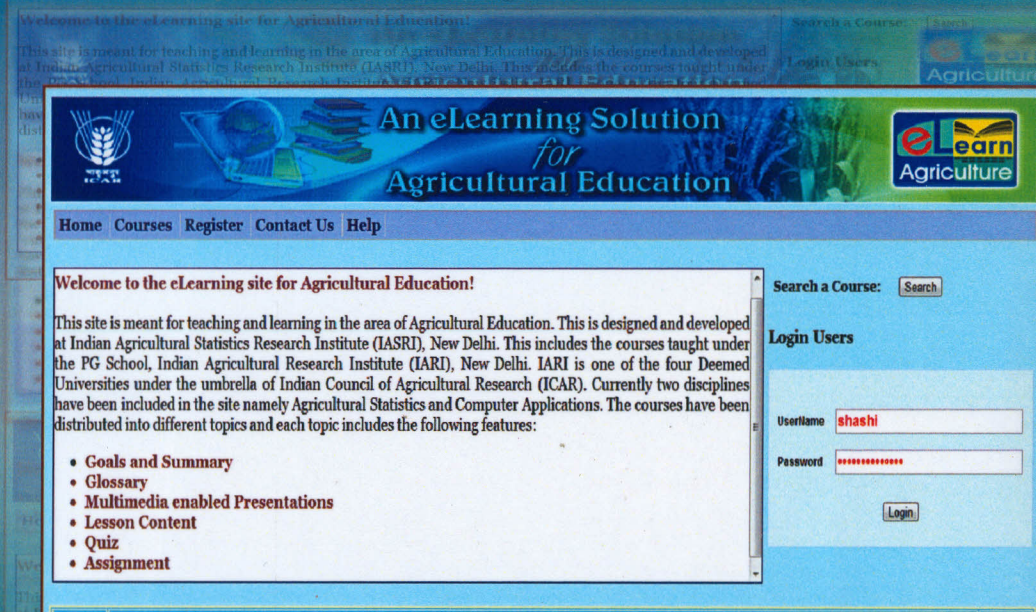
Mr. K.K. Chaturvedi  
kkc@iasri.res.in  
Dr. Cini Varghese  
cini\_v@iasri.res.in

For more information contact:  
Director  
Indian Agricultural Statistics Research Institute  
Library Avenue, Pusa  
New Delhi- 110012, INDIA  
Phone : 91-11-25841479  
FAX: 91-11-25841564  
Email : director@iasri.res.in



# कृषि शिक्षा हेतु एक ईलर्निंग समाधान- ईलर्नएग्रीकल्चर An eLearning Solution for Agricultural Education - eLearnAgriculture

(<http://elearnagri.iasri.res.in/home/>)



शशि दहिया  
आर.सी. गोयल  
के.के. चतुर्वेदी  
सीमा जग्गी  
अंशु भारद्वाज  
सिनी वरगीस

Ms. Shashi Dahiya  
Dr. R.C. Goyal  
Mr. K.K. Chaturvedi  
Dr. Seema Jaggi  
Ms. Anshu Bharadwaj  
Dr. Cini Varghese

संगणक अनुप्रयोग प्रभाग  
DIVISION OF COMPUTER APPLICATIONS  
भारतीय कृषि सांख्यिकी अनुसंधान संस्थान  
(भारतीय कृषि अनुसंधान परिषद)  
लाइब्रेरी एवेन्यू, पूसा, नई दिल्ली-110 012



INDIAN AGRICULTURAL STATISTICS RESEARCH INSTITUTE  
(INDIAN COUNCIL OF AGRICULTURAL RESEARCH)  
LIBRARY AVENUE, PUSA, NEW DELHI -110 012  
Please visit: [www.iasri.res.in](http://www.iasri.res.in)

## Introduction

The system eLearnAgriculture has been developed to provide an online eLearning platform to the students and teachers of agriculture education. It contains eLearning material of the courses conducted under the PG School, IARI, New Delhi which holds a status of Deemed Agricultural University under the umbrella of Indian Council of Agricultural Research (ICAR), New Delhi. The Learning Management System MOODLE has been used for creating and managing course contents in this system. There are three types of users of this system: The Administrator, the teachers and the students. The contents of eCourses are created by the teachers actually teaching the course. The system provides all the tools needed to create the content in an effective and efficient way by including equations, multimedia content like graphics, charts, audio and video. The teachers also administer and manage their eCourses in the system using various options provided to them. A common template has been designed in the system to provide uniformity in the structure and content of all courses. The students can study the course of their own choice after getting themselves registered online using the free email based registration facility provided by the system. They go through the process of study, evaluation and grading in an eCourse but they don't have the permission to add or alter the course content.

## Features at a Glance

- The system provides an opportunity to the agricultural educationists to create and link their course contents online.
- It is a significant online resource for the learners of Agricultural Education. All the eCourses in the system have been distributed amongst various eLessons.
- Each eLesson has been designed using a common format for the standardization and simplicity for the students. The common format contains the following heads:
  - Goals and Summary
  - Interactive lesson
  - Glossary
  - Audible presentation
  - Quiz
  - Grading
- It gives control to students when and where they study.
- It allows the students to study at their own pace.
- It provides frequent and timely individual feedback, through computer assisted assessment, and positive reinforcement.
- It makes learning exciting and engaging.

## eCourse

Each eCourse is divided amongst various eLessons as per the course syllabus. An Administration Block is also provided on the same page to the Teachers and Administrator. The students can not see this block.

The screenshot displays the 'Elementary Statistical Methods' course page. On the left, a sidebar contains 'Management and Administration options' such as 'Participants', 'Activities', 'Search Forums', 'Advanced search', 'Turn editing on', 'Settings', 'Assign roles', 'Groups', 'Backup', 'Restore', 'Import', 'Reset', 'Reports', 'Questions', 'F.RCS', 'Interact me from Elementary', and 'Profile'. The main content area shows a 'Topic outline' with '1 Descriptive Statistics' and '2 Probability Distributions'. Under 'Descriptive Statistics', there are sub-items like 'Goals of the lesson', 'Glossary', 'Lesson Content', 'Audio Presentation', 'Quiz', and 'Summary'. A pie chart and a bar chart are visible. Under 'Probability Distributions', there is a normal distribution curve with area percentages: 2.28%, 10.39%, 34.13%, 34.13%, 13.59%, and 2.28%. A box labeled 'Various eLessons within an eCourse' points to the lesson content area. Another box labeled 'Management and Administration options.' points to the sidebar.

An eCourse in eLearnAgriculture

## eQuiz

A quiz has been created for each eLesson containing a series of questions. The type of questions included in the quiz are

- Multiple choice
- True False
- Matching choice questions
- Short answer questions

The student can retake the quiz after submission

The screenshot shows a 'Preview Quiz on Descriptive Statistics' page. It contains three questions:

- Match the following:
  - Sum of squares of the deviations is minimum when deviations are taken from this. (Choice)
  - The width of the bar in Histogram indicates this. (Choice)
  - The geometric mean of 2, 4, 16 and 32 is this. (Choice)
- The harmonic mean becomes zero when one of the observations is zero.
  - Answer:  True  False
- The mean of a Poisson distribution is 9 and standard deviation is 3.
  - Answer:  True  False

A sample eQuiz under eLearnAgriculture