

---

## MARINE MAMMAL INTERACTION IN PELAGIC FISHING GEARS AND ITS MITIGATION

---

Prajith K K

Fishing Technology Division

Email ID: [prajithkk@gmail.com](mailto:prajithkk@gmail.com)

Ocean covers 70% of the earth surface and is the largest living space which accommodates varieties of flora and fauna. Marine biodiversity is very complex and special. It ranges from single celled or microscopic communities to the gigantic blue whale. The known species diversity in the ocean is less than 13% of the all living species currently described. The oceanic environment plays direct and indirect role in the human life by regulating earth system, providing social and economic goods and services, supply of living and non-living resources etc. Fisheries is the one of the major resources which plays an important role in ocean biodiversity, growth and development of many of the countries and also ensures the food security of millions of coastal communities (Srinivasan et al., 2010; FAO, 2011). Unlike other natural resources, they are renewable (capable of growth) if managed properly. Due to several factors, fishery resources are difficult to manage effectively (Munro and Scott, 1985). There are several issues associated with the management of the fishery resources, which includes over exploitation of targeted and non-targeted species, ecosystem degradation, ghost fishing, pollution, as well as the carbon foot print of the fishing operations (Ardill and Gillett 2011). Interaction of marine mega fauna with fisheries is the one of the recent critical issue addressed by the fishery managers and marine biologists of the globe. The incidence of protected marine species in Indian gillnet fishery is estimated as 0-3 number per operation (Koya et al., 2018). Fisheries is the major reason for the non-natural mortality of large marine vertebrates such as marine mammals, turtles, sharks, rays, skates etc. among these, marine mammals are the charismatic animals exerts major influence on marine food web, structure and function of the marine ecosystem. Many of the marine mammals are categorized as protected species. In a complex fishery with varieties of vessel gear combinations, the chances of mammal interaction with fishery is very high. The balance between the conservation of vulnerable species and responsible utilization of fishery resource is a challenging topic. Which need to be taken care rightly with proper management measures.

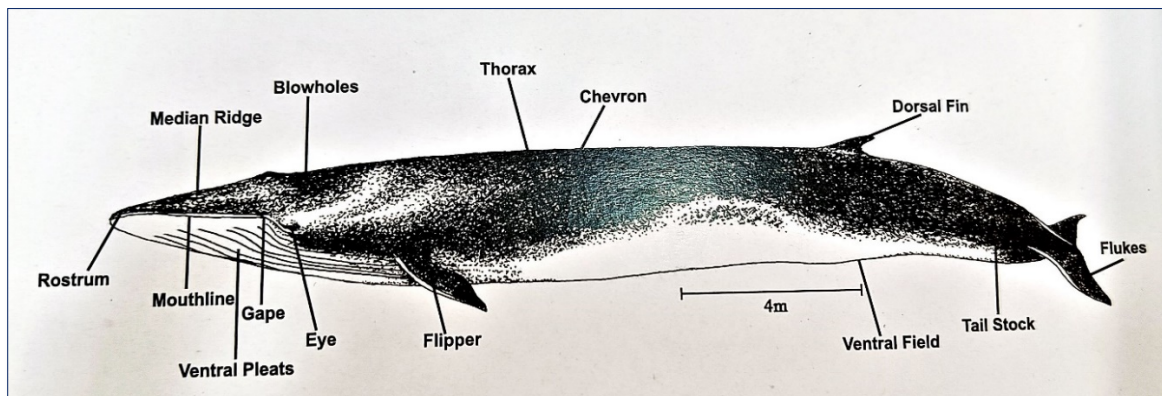
### **Biological features of marine mammals**

Mammals are highly developed animal groups stand on the apex of the animal kingdom. They have a diverse distribution with suitable adaptation to live in the respective geographical

relams. Mammals lives in aquatic environment are Morphologically and anatomically adopted for the life in water. Hydrodynamic body, modified appendages for reducing drag and maximizing propulsion, efficient respiratory system with high oxygen retention, better thermoregulatory mechanisms, specialised sensory and communication mechanism etc. Make them unique from other group of mammals. 'Marine mammal' is a general term to address the members of 5 different groups Viz Cetaceans, sirenians, pinnipeds, sea otters, and the polar bears. A common feature for all the marine mammals is that they spent their entire life in ocean or nearby related ecosystems and derive all of their food from aquatic habitat (Jefferson et al 1993).

**Table: 1 Classification of Marine mammals**

<b>Kingdom: Animalia</b>	
<b>Phylum : Chordata</b>	
<b>Class : Mammalia</b>	
<b>Order: Cetacea</b>	Whales, Dolphins and porpoises
<b>Order: Sirenia</b>	Dugongs and Manatees
<b>Order: Carnivora</b>	Pinnipids (Seals, Sea lions and walrus) and other marine carnivore (Polar bear, Otters)



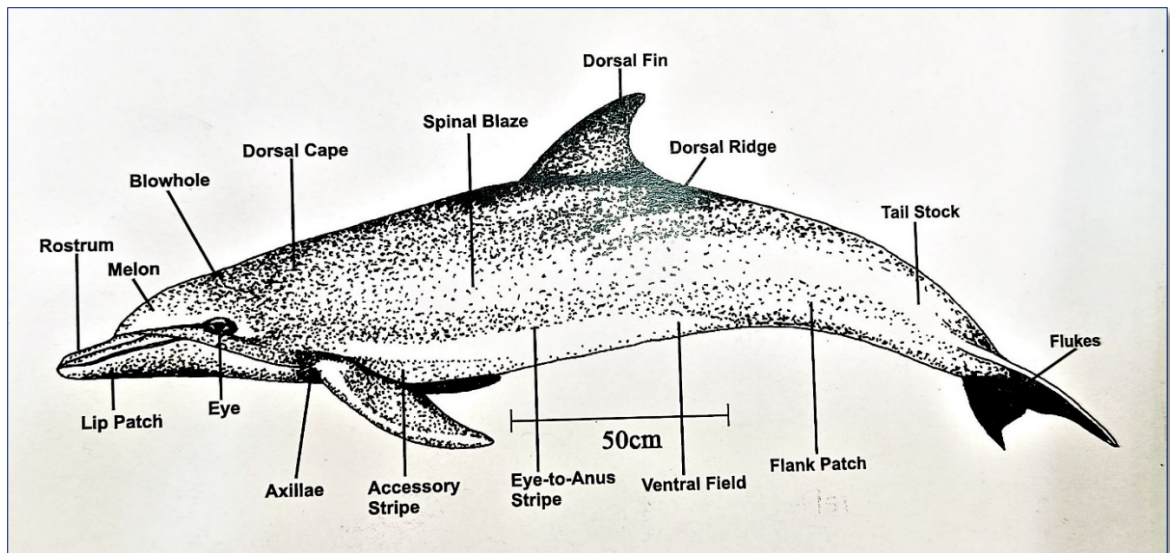


Fig: 1 Morphological features of a typical cetaceans (Vivekanandan and Jeyabaskaran, 2012)

### Marine mammals of India


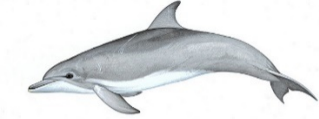


Worldwide 130 species of marine mammals are identified from various oceanic regions viz. tropical, subtropical, temperate and polar regions (Jefferson et al 2008). Indian seas accommodate varieties of marine mammals belongs to two orders, cetaceans and sirenian. Which includes baleen whales, toothed whales, dolphins porpoises and dugongs. (Vivekanandan and Jeyabaskaran,2012). Out of 130 species reported worldwide, 25 species of cetaceans are reported from Indian waters of which five are Mysticeti (Baleen whales) and the rest are Odontoceti, which includes Delphinidae, Physteridae, Kogiidae, Ziphiidae, Phocoenidae and Platanistidae (Kumaran, 2002). Only one species of sirenian (Dugong dugon) is reported. All the marine mammals of India are protected by law and positioned under Wildlife (Protection) Act, 1972. Out of which three species Gangetic dolphin (*Platanista gangetica*), Irrawaddy dolphin (*Orcaella brevirostris*) and dugong (*Dugong dugon*) are protected under Schedule I and rest are placed under Schedule II. As per the act, Schedule I and Part II of Schedule provide absolute protection. Capture, use and trade of animals under this schedule prescribed the highest penalties. India is the first country in the world having a cetacean fauna as National aquatic animal. Gangetic dolphin *Platanista gangetica gangetica* is declared as the National Aquatic Animal by the Prime minister of India in the First Meeting of the National Ganga River Basin Authority (NGRBA) on the 5th of October 2009.

### Interaction of marine mammals with fishing systems

Cetaceans coming under family Delphinidae shows more interaction with coastal fisheries in India. Dolphins are the members of this family. Active movement, overlapping with the feeding and activity zones of other commercially targeted nektonic groups are the some of the reasons for this higher interaction. While analysing the depth wise and zone wise distribution of marine

mammals of India, there are several species with active distribution in the coastal fishing zones. Four species of dolphins viz *Stenella longirostris* (Spinner dolphin) *Tursiops aduncus* (The Indo-Pacific bottlenose dolphin), *Delphinus capensis* (The long-beaked common dolphin) *Sousa chinensis* (The Indo-Pacific humpback dolphin) are the four major dolphin species abundant in the coastal waters (Jayapraksh et al., 1995). (Table: 2).

**Table : 2: Major dolphin species with higher interaction with fishing systems**

<b>Species</b>	
	<i>Stenella longirostris</i>
	<i>Tursiops aduncus</i>
	<i>Delphinus capensis</i>
	<i>Sousa chinensis</i> -

The mammal-fishery interactions are of several kind viz. biological/ ecological and direct/operational interactions (Wickens, 1994). In mammal- fishery interaction, most of the interactions are reported as predatory type. Fish is one of the most important diet of marine mammals and many are competing with fishermen for the catch. Some of the dolphins forage exclusively on fishes (Barros & Wells, 1998, Panicker and Sutaria, Sule et al 2015).

### **Major pelagic fishing systems with marine mammal interaction**

Indian fisheries are multispecies-multi gear in nature and characterized by a heterogeneous fishery management system (Najmudeen and Sathiadhas, 2008). Fishing is carried out with more than 20 gear and vessel combinations. Out of the various gear operated, gillnets and seine nets are more vulnerable to the marine mammal interaction (Cockcroft & Krohn, 1994; Perrin et al., 1994; Archer et al., 2001; Wise et al., 2001; Read et al., 2006, Joseph et al., 2021). Gillnets have either a single shot/unit of net or a number of units tied end to end to form a full fleet of length ranging from 600 to 16500 m with a hung depth of 3 to 20 m. Based on mesh size, Indian gillnets are classified into small meshed nets with 14 to 45 mm mesh size and large meshed nets with 45 to 500 mm mesh size which target varieties of species viz. sardine, mackerel, anchovy, seer fish, shark, tuna, pomfret, hilsa, barracuda, billfish, carangid, perch, elasmobranch. etc. Fishing is normally conducted at a depth of 20-1000 m. study by ICAR-Central Institute of Fisheries Technology, Cochin from 20 major fishing harbours along Indian coast reports, coastal gillnets are more prone to cetacean interaction. As gill nets are stretched wall of net with very low visibility in water, the net will obstruct the movement of animals comes in the range of operation and lead to entanglement. Depredation may another reason for the interaction. There are many reports that marine mammals feed on fish caught by fishing gears (Gonener and Ozdemir, 2012). While examining the inshore and off shore gill net bycatch composition, finless porpoise, humpback dolphin and Indo-Pacific bottle nose dolphins are caught in the coastal gillnet targeting tuna and seer fishes. Whereas spinner dolphins, Risso's dolphin and dwarf sperm whale are the species reported from the offshore drift gillnet ( Anderson et al. 2020, Yousuf et al. 2009)

### **Marine mammal interaction in gillnets**

Almost 84% of the global cetacean by catch is reported from gill net fishery (Read et al., 2006) Most of the fishery-mammal interactions are reported during late 1980s (Northridge, 1984). due increase in incidental catch of protected species in gill nets, operation of gillnets in the high seas is banned by many countries by law (He, 2006). In India, technological advancement and modernization in the gillnet sector resulted in an increase in the quantum of gillnets taken for operation even in distant and oceanic waters (Thomas,2019). These escalation in the size of the gillnets increased the chances of marine mammal encounters. The modernisation also resulted in shifting of area operation of gillnets from coastal waters to deep sea so there have been a change in the species composition of cetacean bycatch in drift gillnets also (Anderson, 2014 ). Almost three decades of observation from Indian waters reports 98.8 % mammal mortality reported were due to entanglement in gillnets (Jeyabaskaran et al. 2016). Among the major fishing systems operated along Indian coast, cetacean interaction is reported maximum from gillnets (57.7%) particularly in the small meshed gillnets operated in the coastal waters. Joseph et al. (2021). In India finless porpoise, humpback dolphin and Indo-Pacific bottle nose

dolphins must have been caught in tuna/seer gillnets operated in inshore waters while spinner dolphins, Risso's dolphin and dwarf sperm whale among other species dominated the offshore drift gillnet bycatch (Anderson et al. 2020, Yousuf et al. 2009). The annual cetacean mortality caused by the Indian gillnet fishery is estimated in the range of 1000-10,000/year (Lal Mohan. 1994, Yousuf et al. 2009, Kumaran, 2002) and most of the mortalities are associated with pelagic fishery of yellowfin tuna (*Thunnus albacares*), sharks, and seerfish (*Scomberomorus commerson* and *S. guttatus*).

#### **Marine mammal interaction in seine nets**

In India, after gillnets, seine nets are most prone to marine mammal interaction (Joseph et al, 2021). Unlike gillnet fishery, seine fishery in India is highly regional and restricted to southern coast. Surrounding nets are mainly employed to catch the shoaling pelagic fishes like sardines, mackerel, tuna etc. Purse seines and Ring seines (mini purse seines) are the two major seine nets in India. Ring seines, otherwise known as mini-purse seines, are a group of lightly constructed seines adapted for operation in the traditional motorised sector. The total length of a seine net ranges from 600-1000 m with a depth of 83-100 m and its operation is confined to a depth of less than 75 m. The operation of a seine net consists of all the aspects of hunting, scouting the fish, chase and interception of the fish school etc. cetaceans are the major bycatch reported in seine fisheries, especially the members belong to family Delphinidae (dolphins) are more vulnerable to fishery interaction.

The dolphin species which has more access to coastal waters showed more interaction with fishing systems. 84.8% of the interaction with fishing systems was exhibited by four species *Stenella longirostris*, *Tursiops aduncus*, *Delphinus capensis*, *Sousa chinensis*, which are abundant in the coastal waters (Table.2). (Joseph et al. 2021, Raphael et al., 2017; Edwin et al., 2017; Koya et al., 2018). Larger herd size, active swimming behaviour, sharing of common ecological niche with the fishes which are targeted by seine fishing makes dolphins more susceptible to capture and entanglement in the fishing nets. There are reports of targeted capture and landing of dolphins from seine nets in India (Jayaprakash et al. 1995, Yousaf et al., 2009). During 1984, almost 42 common dolphin *Delphinus delphis* were landed in Kochi by 12.5m purse seiner and animals were sold to local market 27.5INR/specimen. Similarly, in 1995 and 2009, finless porpoise, *Neophocaena phocaenoides* were landed by purse seines from off Mangalore coast of Karnataka and Gulf of Manner region. Dolphin fishery interaction in India is mainly associated with small pelagic fishery (especially oil sardine) in near shore shallow waters (Yousaf et al., 2009). Majority of the cetaceans- seine net interactions were reported from the states like Kerala, Karnataka, and Goa where the higher landing of small pelagic are reported. (Prathibha et al., 2018, Yohannan and M. Sivadas, 2003, Joseph et al. 2021, Yousaf et al., 2009, Edwin et al. 2017, Raphael et al., 2017, Prajith et al 2014).

Depredation is another reason for the mammal- seine net interaction. Cetaceans especially dolphins considered fishing nets as an easily accessible and available source of food. when the catch concentrates to the bund area of the net, dolphins approaches the net and remove the catch by biting and tearing off the net. Removal or damage of the harvested catch in commercial or recreational fishing by predator which leads to the damage of the fishing gear is referred as depredation. Depredation directly cause economic loss by damaging fishing gear. The indirect loss is by reducing the quality of the catch.

### **Mitigation**

The mitigation measures to minimize the marine mammal fishery of active and passive type. Making alterations in the structural features, increasing the visibility of fishing gear by means of using thick twines, incorporation of add-on reflectors, colouring the netting panels are the major passive methods. Whereas mechanical sounds generation using crackers, explosives, gunshots etc. are come under active type (Jeffersons and Curry, 1996). Indian fishermen follow both active and passive mitigation measures to deter marine mammals from the fishing operation and to safeguard their catch and gear. which can be further classified as indigenous and modern methods. The major indigenous mitigation strategies adopted by the Indian fishermen to minimize cetacean bycatch/interaction are selection of suitable grounds, structural modifications in the gear, sound generation using crackers, vessel chasses, use of boat noises making loud noise, throwing bait to distract the mammals and jumping into water to scare them. While practising these indigenous methods, fishers are cautious to avoid injury to the animals. They even patrol in the fishing ground with small boats and alter the attention of mammals with the help of objects like tyres, boat anchors, stones covered in plastic bags etc. The major modern mitigation methods are the use of acoustic deterrent devices like pingers. Besides this several government agencies and research institutes of the country are engaged in various outreach programs to create awareness among fishers about the protected marine species and their importance in the ecosystems.

***Dolphin wall nets (DWN):*** Dolphin wall nets are the indigenously fabricated wall of nets which creates a barrier between the seine net and the dolphins during fishing operation. The net is 1000-1500m long with plastic cans as float and large steel rings as sinkers. The DWN is an innovation from the side of local fishers of Kerala, Southernmost state of India which reduce the operational damages and resulted catch loss during fishing. besides this, unknowingly the net ensures protection of mammals from the incidental catch and mortality (Prajith et al. 2014)

***Medina panels:*** This is a panel of relatively small mesh netting (50 mm or less) sewn into the purse seine at the distance of about 1/3 of the float line length from the bunt-end tip, to surround the apex of the backdown area where porpoises are most likely to come in contact with the net. Usually it is one or two strips deep and 330 m long. The longer Medina panel the more effective it is, especially fitted into the net throughout the bunches area and as near the

bunt as practical. The system is named after the Californian skipper who first used it. (FAO 2022)

**Pingers:** Sound has significant role in the lives of marine mammals and sound is the prime mode of information transformation used for communication. As an adaptation to live in a vast aquatic environment, the acoustic system of marine mammals is well developed. Understanding this advantage of communication mechanisms using sound, use of aquatics pingers is the most suitable and efficient mechanism to distract cetaceans from the fishing gears (Fig. 3). Pingers sometime referred as net alarms is one of the best options to reduce injury and resulted mortality of marine mammals. Dolphin pingers are the devices that produces ultrasound which alert and keep the dolphins and porpoises away from the nets. Pinger is designed to work by emitting a sound wave signal beyond 70 kHz that is known to be in the best hearing range of most dolphin species. The signal acts as an alarm and in some cases the pinger stimulates dolphins to use their echolocation which alerts them to the presence of the pingers and fishing nets. This sound wave is not audible to human beings, but it creates disturbance to dolphins and alert dolphins the presence of nets. Pingers are efficient to minimize cetacean interaction both in gillnets and seine nets.



Fig:2 A typical banana pinger used in gill nets and seine nets

### **Conclusion**

Global survey report of United Nations in 2005 reports 70% of the dolphin species are at risk due to various human activities. Removal of the apex predators like cetaceans by incidental or purposeful killing may leads to imbalance in the ecosystem. Marine mammal fishery research in India is still in infancy stage. Most of the studies are based on the stranding events. Research to formulate suitable mechanism to reduce or avoid mammal interaction with fishing system is the need of the hour. Ecology, behaviour and biology of marine cetaceans need better understanding. To reduce marine mammal incidental catch and kill, there should be a management system or consortia which comprises of government agencies, academicians, researchers and fishermen. Understanding the fishermen perception is essential while formulating the research. A refinement in in the existing indigenous mitigation measures by the application of suitable scientific approach with the involvement of fishermen is needed. Besides this awareness about the importance of marine mammals and other mega fauna



should be created among fishers, general public, school students etc. through various outreach and extension programmes.

## References

- Anderson, R. C. (2014) Cetaceans and tuna fisheries in the western and central Indian Ocean. IPNLF Tech Rep 2. International Pole and Line Foundation, London.
- Anderson, R. C., Herrera, M., Ilangakoon, A. D., Koya, K. M., Moazzam, M., Mustika, P. L. and Sutaria, D. N. (2020) Cetacean bycatch in Indian Ocean tuna gillnet fisheries. *Endanger. Species. Res.* 41: 39-53
- Archer, F., Gerrodette, T., Dizon, A., Abella, K. & Southern, S., 2001. Unobserved kill of nursing dolphin calves in a tuna purse-seine fishery. *Marine Mammal Science*, 17, 540–554.
- Ardill, D., D. Itano and R. Gillett 2011 A Review of Bycatch and Discard Issues in Indian Ocean Tuna Fisheries., SmartFish Working Papers No 00X, IOTC-2012-WPEB08-INF20
- Barros, N. B. and R. S. Wells. 1998. Prey and feeding patterns of resident bottlenose dolphins (*Tursiops truncatus*) in Sarasota Bay, Florida. *J. Mamm.* 79: 1,045-1,059.
- Cockcroft, V.G. & Krohn, R., 1994. Passive gear fisheries of the southwestern Indian and southeastern Atlantic Oceans. An Assessment of their possible impact on cetaceans. In *Gillnets and cetaceans* (ed. W.F. Perrin et al.). Report of International Whaling Commission, Special Issue, 15, 317–328.
- Edwin, L., Joseph, R. and Raphael, L. (2017) Acoustic pingers: Prevention of fish catch depredation and dolphin entangling. *Fishtech Reporter*, Central Institute of Fisheries Technology 3(1):
- FAO 2022. Medina panels. Text by V. Crespi. Fisheries and Aquaculture Division [online]. Rome. Updated 2008-11-28 [Cited Thursday, February 3rd 2022]. <https://www.fao.org/fishery/en/equipment/medinapanels/en>
- FAO. 2011. The state of the world's land and water resources for food and agriculture (SOLAW) – Managing systems at risk. Food and Agriculture Organization of the United Nations, Rome and Earthscan, London.
- Gordon R. Munro, Anthony D. Scott, Chapter 14 The economics of fisheries management, *Handbook of Natural Resource and Energy Economics*, Elsevier, Volume 2, 1985, Pages 623-676, ISSN 1573-4439, ISBN 9780444876454, [https://doi.org/10.1016/S1573-4439\(85\)80021-X](https://doi.org/10.1016/S1573-4439(85)80021-X) (<https://www.sciencedirect.com/science/article/pii/S157344398580021X>)
- Jayaprakash, A.A., Nammalwar, P., Krishna Pillai, S., Elayathu, M.N.K., 1995. Incidental by-catch of dolphins at fisheries harbour, Cochin with a note on their conservation and management in India. *J. Mar. Biol. Ass. India* 37 (1-2), 126-133.
- Jefferson, T.A., Curry, B.E., 1996. Acoustic methods of reducing or eliminating marine mammal fishery interactions: do they work? *Ocean. Coast. Manag.* 31 (1), 41-70

- Jefferson, T.A., S. Leatherwood, and M.A. Webber., 1993. FAO species identification guide. Marine mammals of the world. Rome, FAO. 1993.320. p. 587 figs
- Jefferson, T.A., Webber, M.A., Pitman, R.L., 2008. Marine Mammals of the World: a Comprehensive Guide to their Identification. Academic Press, PP 1-592 pp
- Jeyabaskaran, R., J. Jayasankar, D. Prema and V. Kripa (2016) Enhancing the effectiveness of conservation potential of marine mammals in Indian seas. Final Report submitted to GIZ-CMPA, New Delhi, pp. 1-82, Central Marine Fisheries Research Institute, Kochi, India
- Joseph, R, Das, P.H. and Leela. E (2021) Cetacean Fishery Interaction during Operation of Major Fishing Systems of India. Fish. Technol. 58:1-6
- Koya, K. M., Prathibha, R., Vinay, K. V. and Abdul, A. P. (2018) Non-target species interactions in tuna fisheries and its implications in fisheries management: Case of large-mesh gillnet fisheries along the north-west coast of India. J. Mar. Biol. Ass. India, 60 (1): 18-26
- Kumaran, P. L. (2002). Marine mammal research in India—a review and critique of the methods. Current Science, 1210-1220.
- Lal Mohan, R. S. L. 1994. Review of gillnet fisheries and cetacean bycatches in the northeastern Indian Ocean. Rep.int. Whal Commn (special issue) 15: 329-43.
- Najmudeen.T.M., Sathiadhas R. (2008) Economic impact of juvenile fishing in a tropical multi-gear multi-species fishery. Fisheries Research Volume 92, Issues 2–3, August 2008, Pages 322-332
- Northridge, S.P., 1984 World review of interactions between marine mammals and fisheries. FAO Fish.Pap., (251):190 p.
- Perrin, W.F., Donovan, G.P. & Barlow, J., 1994. Gillnets and cetaceans. Report of International Whaling Commission Special Issue, 15, 629 pp
- Pingguo He. 2006. Gillnets: Gear Design, Fishing Performance and Conservation Challenges. Marine Technology Society Journal, 40 (3):12-19.
- Prajith, K. K, Dhiju, D.P.H and Edwin, L (2014) Dolphin Wall Net (DWN)-An innovative management measure devised by ring seine fishermen of Kerala/India to reducing or eliminating marine mammal fishery interactions. Ocean Coast. Manag. 102: 1-6
- Prathibha Rohit, M. Sivadas, E. M. Abdussamad, A. Margaret Muthu Rethinam, K. P. Said Koya, U. Ganga, Shubhadeep Ghosh, K. M. Rajesh, K. Mohammed Koya, Anulekshmi Chellappan, K. G. Mini, Grinson George, Subal Kumar Roul, S. Surya., Sandhya Sukumaran, E. Vivekanandan, T. B. Rethesh, D. Prakasan, M. Satish Kumar, S. Mohan, R. Vasu and V. Suprabha. (2018). The Enigmatic Indian Oil Sardine: An Insight. CMFRI Special publication No. 130 p. 156

- Raphael, L., Joseph, R. and Edwin, L. (2017) Depredation and catch loss due to the interaction of aquatic organisms with ring seines off Cochin region. *Fish Tech.* 54: 162-169
- Read AJ, Drinker P, Northridge S (2006) Bycatch of marine mammals in US and global fisheries. *Conserv Biol* 20:163–169. doi:10.1111/j.1523-1739.2006.00338.x
- Sedat Gönener<sup>1,\*</sup>, Süleyman Özdemir Investigation of the Interaction Between Bottom Gillnet Fishery (Sinop, Black Sea) and Bottlenose Dolphins (*Tursiops truncatus*) in Terms of Economy. *Turkish Journal of Fisheries and Aquatic Sciences* 12: 115-126 (2012)
- Srinivasan, U. T., Cheung, W. W., Watson, R., & Sumaila, U. R. (2010). Food security implications of global marine catch losses due to overfishing. *Journal of Bioeconomics*, 12(3), 183-200.
- Sutaria, D., Panicker, D., Jog, K., Sule, M., Muralidharan, R., & Bopardikar, I. (2015). Humpback dolphins (Genus *Sousa*) in India: an overview of status and conservation issues. In *Advances in marine biology* (Vol. 72, pp. 229-256). Academic Press
- Thomas S. N., 2019. Sustainable gillnet fishing. In: ICAR-CIFT Winterschool manual on Responsible Fishing: Recent advances in Resource & energy conservation, 21 November-11 December 2019, 239-249.
- Vivekanandan, E. and Jeyabaskaran. 2012. Marine mammal species of India, Central Marine Fisheries Research Institute, Kochi, 228p.
- Wickens, P. (1994). Interactions between South African fur seals and the purse-seine fishery. *Marine Mammal Science*, 10(4), 442-457.
- Wise, L., Silva, A., Ferreira, M., Silva, M. A. & Sequeira, M., 2001. Interactions between small cetaceans and the purse-seine fishery in western Portuguese waters. *Scientia Marina*, 71, 405–412.
- Yohannan, T.M and Sivadas, M Indian Mackerel in Mohan Joseph, M and Jayaprakash, A A, eds. (2003) Status of Exploited Marine Fishery Resources of India. Central Marine Fisheries Research Institute, Kochi.
- Yousuf, K. S. S. M., A. K. Anoop, B. Anoop, V. V. Afsal, E. Vivekanandan, R. P. Kumarran, and P. Jayasankar. 2009. Observations on incidental catch of cetaceans in three landing centres along the Indian coast. *Marine Biodiversity Records*, 2, e64.

\*\*\*\*\*