

Diversity of Caladiums - an Ornamental Aroid in Goa



Dr. Safeena S.A, Dr. M. Thangam and Dr. N. P. Singh



ICAR-CENTRAL COASTAL AGRICULTURAL RESEARCH INSTITUTE

(INDIAN COUNCIL OF AGRICULTURAL RESEARCH)

ELA, OLD GOA -403402, GOA, INDIA

2016

Technical Bulletin No. 60

Diversity of Caladiums - an Ornamental Aroid in Goa

Dr. Safeena S.A
Dr. M. Thangam
Dr. N. P. Singh



HORTICULTURE SCIENCE SECTION

ICAR - CENTRAL COASTAL AGRICULTURAL RESEARCH INSTITUTE
(INDIAN COUNCIL OF AGRICULTURAL RESEARCH)

ELA, OLD GOA -403402, GOA, INDIA

2016

Copyright @ 2016, Indian Council of Agricultural Research (ICAR)

All Rights Reserved

For reproduction of this document or any part thereof,
Permission of Indian Council of Agricultural Research (ICAR),
New Delhi must be obtained

Published by:

Dr. N. P. Singh

Director

ICAR - CENTRAL COASTAL AGRICULTURAL RESEARCH INSTITUTE

Ela, Old Goa – 403 402

Fax : 0832-2285649

Phone : 0832-2284678, 2284679

E-mail : director.ccari@icar.gov.in

Website : <http://www.ccari.res.in>

Correct Citation: Safeena S.A, M. Thangam and N. P. Singh (2016), Diversity of Caladiums – an Ornamental Aroid in Goa, Technical Bulletin No: 60, ICAR - CENTRAL COASTAL AGRICULTURAL RESEARCH INSTITUTE (Indian Council of Agricultural Research), Ela, Old Goa-403 402, Goa, India.

Printed at: Impressions, Belgaum

भाकृअनुप केंद्रीय तटीय कृषि अनुसंधान संस्थान
(भारतीय कृषि अनुसंधान परिषद)

ICAR-Central Coastal Agricultural Research Institute

(Indian Council of Agricultural Research)

Old Goa - 403 402

Tel.: 0832-2284677/678/679

Fax: 0832-2285649

Email: director.ccari@icar.gov.in



डॉ. एन. पी. सिंह
निदेशक

Dr. N. P. Singh
Director



FOREWORD

Caladiums are vibrant and colourful choice for our landscape since they come in a wide variety of colours and foliage patterns. They have variegated and dramatic multi-coloured foliage which will provide an immediate appeal and colour in the landscape. Caladiums are a genus of ornamental plants belonging to the family Araceae. Caladium leaves are shaped like hearts, arrows, straps or lances in various colour combinations and with wonderful patterns. The foliage of Caladiums are splashed with combinations of red, pink, rose, white, burgundy chartreuse, and green – often with several colours combined. The brilliant foliage of this classic plant light up the gardens and brightens the shady spots and hence a promising plant for landscaping. ICAR - Central Coastal Agricultural Research Institute, Ela, Old Goa has collected, maintained, evaluated and documented different promising Caladium cultivars and it is being maintained in the Institutional Farm. The Technical Bulletin, “Diversity of Caladiums - an Ornamental Aroid in Goa” is an important compiled document of Caladium genetic resources in Goa and throws light on the incredible range of diversity in leaf colour, shape and pattern existing in different caladium cultivars and suitability of the same for various landscape applications. I compliment and congratulate the authors for their sincere efforts in compiling this technical bulletin. I am sure the information documented and compiled in this bulletin would be useful for researchers, students, farmers, garden enthusiasts, landscape entrepreneurs, people involved in nursery industry and other stake holders involved in the floriculture sector.

(Narendra Pratap Singh)
Director

CONTENTS

Sl. No	Particulars	Page No.
1	Foreword	III
2	Preface	V
3	Introduction	1
4	Evaluation of different Caladium cultivars	3
5	Description of selected Caladium cultivars	7
6	Recommendation of Caladium cultivars for various purposes in landscaping	22
7	Conclusion	25
8	References	26

PREFACE

Caladiums are a group of commercially important foliage ornamental crops belonging to the Genus *Caladium* and botanical family Araceae. These plants are primarily grown for their dramatic multi-coloured foliage which are shaped like hearts, arrows, straps or lances in various colour combinations and with wonderful patterns. It can be grown as a container plant, indoor potted plant or for various other purposes in landscaping like Beds , Borders, Edging, Hedges , Planters, Mass planting, Hanging baskets, General Garden Use etc. However people are not aware of the range of diversity existing in this crop and the selection of suitable cultivars for various landscaping purpose. With this background, a study on collection, conservation and evaluation of different Caladium types was conducted at ICAR – Central Coastal Agricultural Research Institute, Ela, Old Goa. The objective of the study was to evaluate different Caladium types based on various landscape performance criteria and to identify suitable caladium that could be used for various purposes in landscaping. During the course of the investigation, the different caladium cultivars were evaluated for various morphological and leaf quality traits and the data is documented in the form of a Technical Bulletin “Diversity of Caladiums - an Ornamental Aroid in Goa”. At present, fifteen types / varieties viz., Torchy, Rose bud, White Christmas, Aaron, Red frill, Heart delight, Tapestry, Red flash, Pink beauty, Pink cloud, Polka dot, Rose glow, Princess Taro, *C. Steudneriifolium* and Dumbo have been collected, evaluated and maintained in the Institute farm. Different caladium cultivars studied exhibited an implausible range of diversity for various traits studied. The information compiled in this bulletin would be useful to researchers, students, farmers, garden enthusiasts, landscape entrepreneurs, folks involved in nursery industry and other stake holders involved in the floriculture sector. While bringing out this bulletin, we sincerely thank and acknowledge ICAR, New Delhi for extending the facility required to carry out this study. We take this opportunity to express our sincere thanks and gratitude to Dr. N. P. Singh, Director, ICAR - Central Coastal Agricultural Research Institute, Ela, Old Goa for his constant inspiration, support and encouragement.

Safeena S.A
M. Thangam
N. P. Singh

INTRODUCTION

Caladiums are ornamental aroids which serve as a vibrant and colourful option for our landscape especially shady landscape. They come in a wide variety of colours and foliage patterns and are grown primarily for their long lasting bright colourful foliage. They will provide an immediate appeal and colour in the landscape. They have variegated and multi-coloured foliage which can be showcased as a single specimen or grouped for spectacular impact. They are inconspicuous flower bearing and coloured ornamental plants which will thrive bright either on ground or in containers placed in shady locations around the landscape. Caladiums are a genus of plants of the family Araceae. They belong to the Kingdom Plantae, Division Magnoliophyta, Class Liliopsida, Order Alismatales, Family Araceae and Genus *Caladium*. Caladiums originated in the tropical or subtropical region of Central America and South America. Modern cultivars are primarily derived from *Caladium bicolor* and its hybrids with other caladium species. They are grouped under the name *Caladium hortulanum*. Caladiums are tropical plants grown from tubers. A caladium plant is comprised of tubers, stalks and the most important showy part, the leaves. The leaves themselves are the most colourful part of this plant. These plants are commonly grown for their dramatic multi-coloured foliage. Caladium leaves are shaped like hearts, arrows, straps or lances in various colour combinations and with wonderful patterns. The brilliant foliage of this classic plant light up your garden and brightens the shady spot. The variety of sizes, tints and shapes of leaves in caladiums inspires the creative gardener to have unique colour in shady landscape until winter.

Commercial Caladium cultivars possess very diverse leaf shapes. There are three forms in caladiums that are most widely cultivated and are broadly classified as fancy, lance and strap. The first and the most common type of caladiums is referred to as “Fancy Leaf”. This is the more commonly seen and the traditional caladium in cultivation. They have heart-shaped leaves (triangular, round or ovate) with three main veins on each leaf arranged in the form of an inverted letter “Y”, a peltate petiole attachment, and the two basal lobes are joined for more than one-fifth of their length and separated by a short narrow sinus.. This type of caladium typically grows about knee high and has an average leaf size comparable to a dinner plate. The second group of caladiums is referred to as “Strap & Dwarf”. They have narrow linear or ribbon like leaves, one main vein and no obvious basal lobes. They have smaller leaves, comparable to a salad plate. Heights for

these types of caladiums can vary from ankle high to almost knee high. The 6-inch to 12-inch, leaves emerge from the ground on arching stems that are generally 1 foot to 2 feet tall. The third type of caladium is referred to as “Lance”. Lance leaved types are intermediate between fancy and strap types. Leaf blades are broad sagittate to cordate-lanceolate, with basal lobes not obvious or broadly separated by a sinus. Generally strap or lance leaved caladiums are much shorter in plant height, produce more number of leaves, more sun tolerant and produce smaller tubers than fancy leaved plants. Most Caladiums in cultivation grow to about 60 cm high and 60 cm wide, although dwarf varieties are now in cultivation. The shape of caladium leaves directly affect the acceptance of the same in marketing. Larger, fancy-leaf types (heart-shaped leaves) are best suited for a perfect show of colour. Strap-leaf types (shorter plants with bunches of leaves) or dwarf types (smaller, heart-shaped leaves) is best suited for pots and window boxes. All of these caladium types can make a dramatic statement in the landscape. Most caladiums are asexually propagated by division of tubers or from tuber pieces (chips).

Leaf colour is another important characteristic of caladium which determines its ornamental significance. Leaf colours in many caladium cultivars are extremely diverse and fascinating. Leaf colour is determined by the colour of the veins (main, secondary and peripheral), interveinal areas, spots and /or blotches. Leaf colour variation is primarily caused by changes in anthocyanin distribution in the foliage. Chlorophyll content also affects the leaf colour variation. The colour variation in caladiums often occurs as spots, streaks, or blotches. The foliage of caladiums may be splashed with combinations of red, pink, rose, white, burgundy chartreuse, and green – often with several colours combined. In caladiums, leaf colours and coloured areas can be quite variable on the same plant with changes in plant development or environmental conditions. Leaf colour pattern often changes from initial to later leaves in caladium. However, the main vein colour of the leaf is an exception and is rather stable under dissimilar environments on different plants, or even at different stages of development. This remarkable stability of colour expression in main veins of leaves has been very useful for cultivar description and identification in Caladiums.

Most of the caladiums prefer filtered sunlight and shade. A shady area with moist, well drained soil that is rich in organic matter should be selected for caladium planting. They should be watered regularly. The soil should be kept slightly moist. Mulching is effective which help retain soil moisture and conserve water. Caladiums are tuber – rooted and can be easily propagated by transplanting a piece of the tuber with eye. Caladiums are remarkably free from major insect or disease problems and thrive in hot, humid weather. They grow best in shade to partial shade (two hours to four hours of direct sun, preferably morning sun). Caladiums can be grown in containers or pots to accent shady spots or can be clumped

together within beds and borders or can be used as indoor house plants. The bright leaves of caladiums, with their bold texture, embellish our shady gardens from May until October, after which the tubers go dormant. In late September or October, caladiums go dormant with cooler temperatures. When grown with poor management, particularly in areas of deep and heavy shade, the plants will produce small and weak tubers. The performance of such a crop may not be good, whether they are left in the ground or dug and stored. Under the right circumstances and with proper management and care, the tubers planted in summer can be dug in the winter and planted next April or left in the ground to provide a beautiful display again next year – and for years to come.

Evaluation of different types of Caladium under agro climatic conditions of Goa

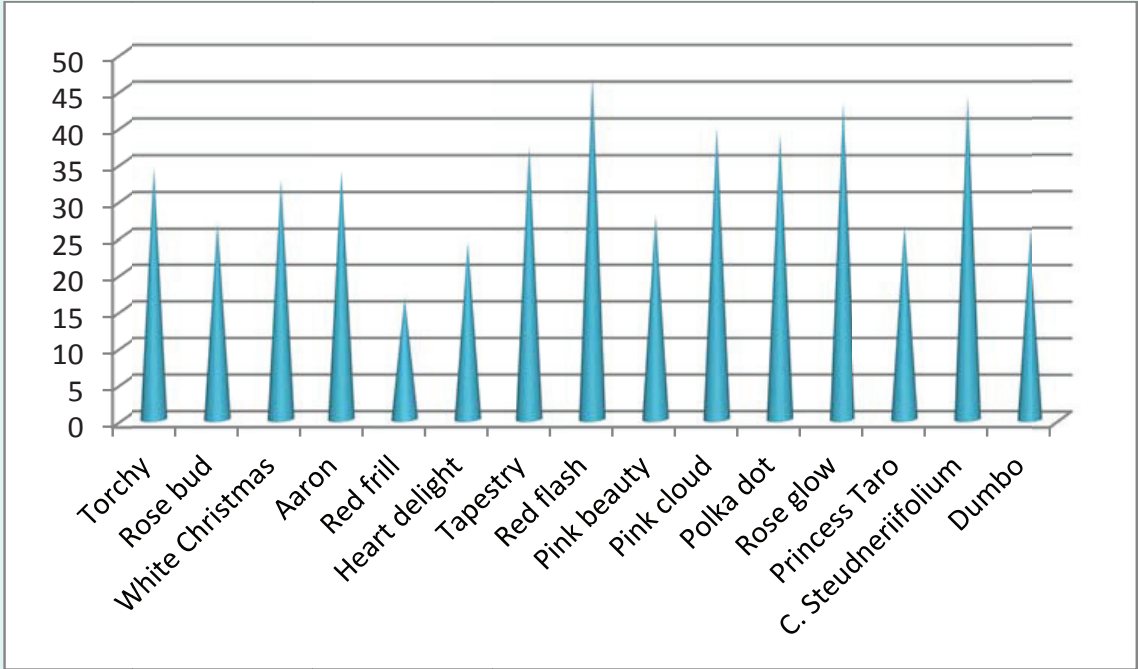
Information on the choice and landscape performance of different varieties of caladiums has been rather scanty in Goa. Hence a study on collection, conservation and evaluation of different Caladium types was conducted at ICAR – Central Coastal Agricultural Research Institute, Ela, Old Goa. The objective of the study was to evaluate different Caladium types based on various landscape performance criteria and to identify suitable caladium that could be used for various purposes in landscaping like Beds , Borders, Edging, Hedges , Planters, Mass planting, Hanging baskets, Container plantings and General Garden Use. The ornamental value of Caladiums primarily depends on the leaf characteristics, including leaf shape, leaf colour, colour pattern, main vein colour and venation pattern. At present, fifteen types / varieties of caladium viz., Torchy, Rose bud, White Christmas, Aaron, Red frill, Heart delight, Tapestry, Red flash, Pink beauty, Pink cloud, Polka dot, Rose glow, Princess Taro, C. Steudneriifolium and Dumbo have been collected, evaluated and maintained. All the collected Caladium varieties were assessed for their suitability for landscape use. The different caladiums studied exhibited a remarkable level of diversity in various leaf characteristics. Significant variation was observed among different caladium cultivars used in the study for various morphological and leaf quality parameters like Plant Height, Number of Leaves, Length of leaf, Width of leaf, Petiole length, Petiole girth, Petiole colour, Leaf shape, Adaxial (upper) leaf surface colour, Abaxial (lower) leaf blade colour and other vegetative traits. Plant height, Number of Leaves, Length of leaf, Width of leaf, Petiole length, Petiole girth, of Caladium cultivars studied ranged from 16.67 cm (Red frill) - 47.00 cm (Red flash), 3.00 (Red frill) - 20.00 (Pink cloud), 11.00 cm(Heart delight) – 31.67 cm(Red flash), 9.20 cm (Dumbo) – 23.17 cm (Red flash), 16.17 cm (Red frill) – 46.50 cm (Red flash) and 16.14 mm (Heart delight) – 21.19 mm (Torchy) respectively.

Plant growth characteristics of different types / cultivars of Caladium under agroclimatic conditions of Goa.

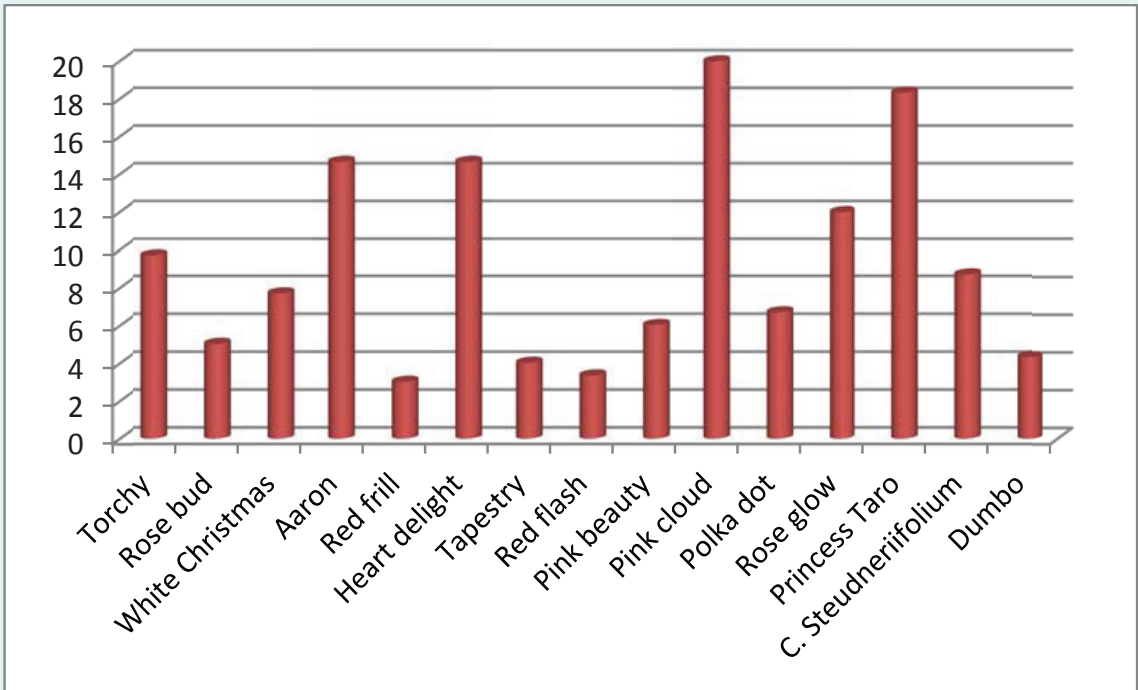
	Treatments	Plant height (cm)	No. of leaves	Leaf length (cm)	Leaf width (cm)	Petiole length (cm)	Petiole girth (mm)
1	Torchy	34.500	9.667	22.667	16.000	34.000	21.187
2	Rose bud	27.000	5.000	19.000	15.500	28.000	18.340
3	White Christmas	32.833	7.667	22.333	15.000	32.333	18.923
4	Aaron	34.000	14.667	16.000	10.000	30.333	18.840
5	Red frill	16.667	3.000	16.333	9.667	16.167	18.150
6	Heart delight	24.167	14.667	11.000	9.833	23.667	16.143
7	Tapestry	37.500	4.000	20.000	13.000	37.000	19.650
8	Red flash	47.000	3.333	31.667	23.167	46.500	20.393
9	Pink beauty	28.000	6.000	21.667	12.167	27.500	19.940
10	Pink cloud	40.000	20.00	30.667	18.667	39.500	17.333
11	Polka dot	39.000	6.667	19.333	12.667	38.500	18.407
12	Rose glow	43.333	12.000	24.833	18.000	42.833	20.280
13	Princess Taro	26.667	18.333	14.000	10.500	25.667	17.983
14	C. Steudneriifolium	44.333	8.667	29.667	18.667	30.333	19.663
15	Dumbo	26.250	4.330	11.600	9.200	22.910	16.441
	SEm+ ₋	3.77	2.68	2.14	1.324	3.474	0.759
	CD	11.308	8.040	6.427	3.973	10.422	2.276

Salient traits	Range
Plant Height	16.67 cm (Red frill) - 47.00 cm (Red flash)
No. of Leaves	3.00 (Red frill) - 20.00 (Pink cloud)
Length of leaf	11.00 cm(Heart delight) – 31.67 cm(Red flash)
Width of leaf	9.67 cm(Dumbo) – 23.17 cm (Red flash)
Petiole length	16.17 cm (Red frill) – 46.50 cm (Red flash)
Petiole girth	16.14 mm (Heart delight) – 21.19 mm (Torchy)

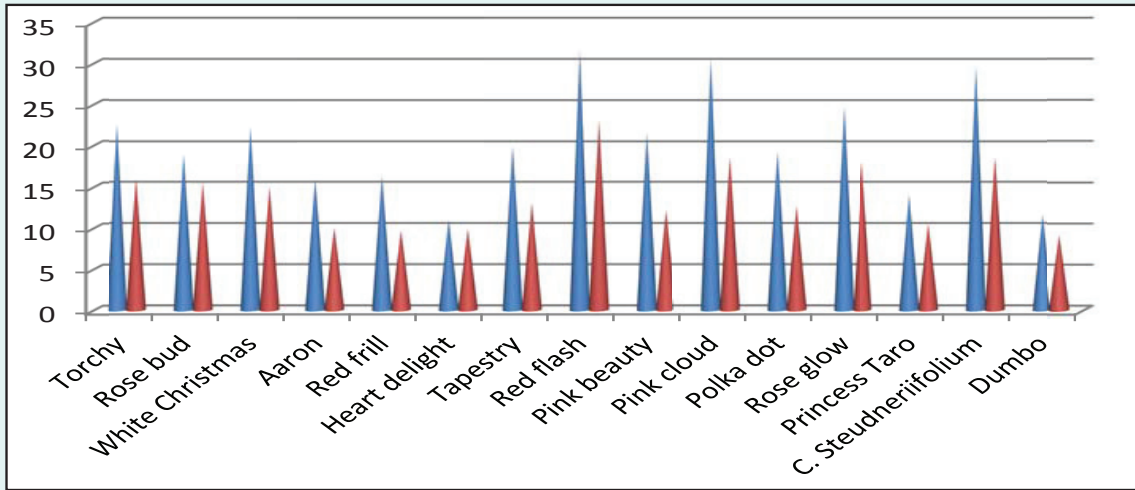
Variability in Plant height (cm) of different cultivars of Caladium



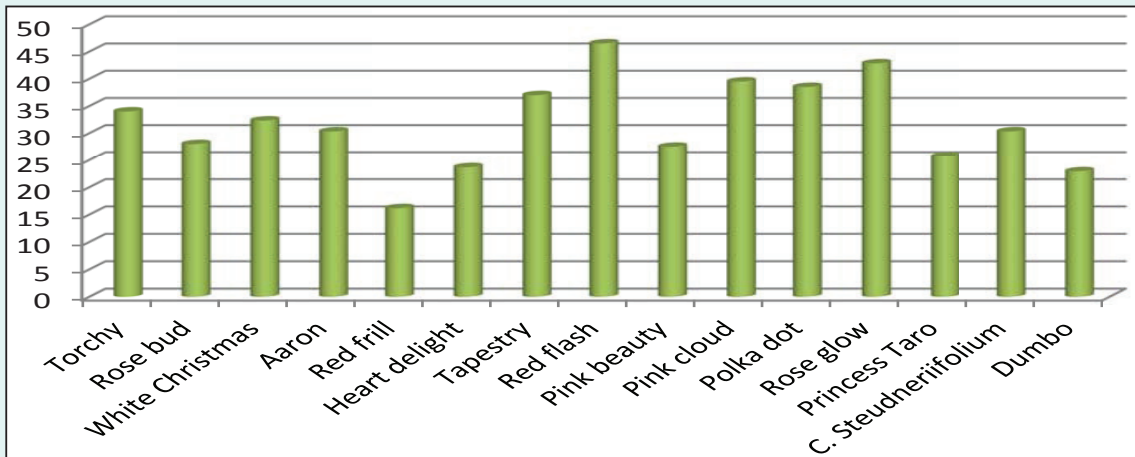
Number of leaves as influenced by different types of Caladium



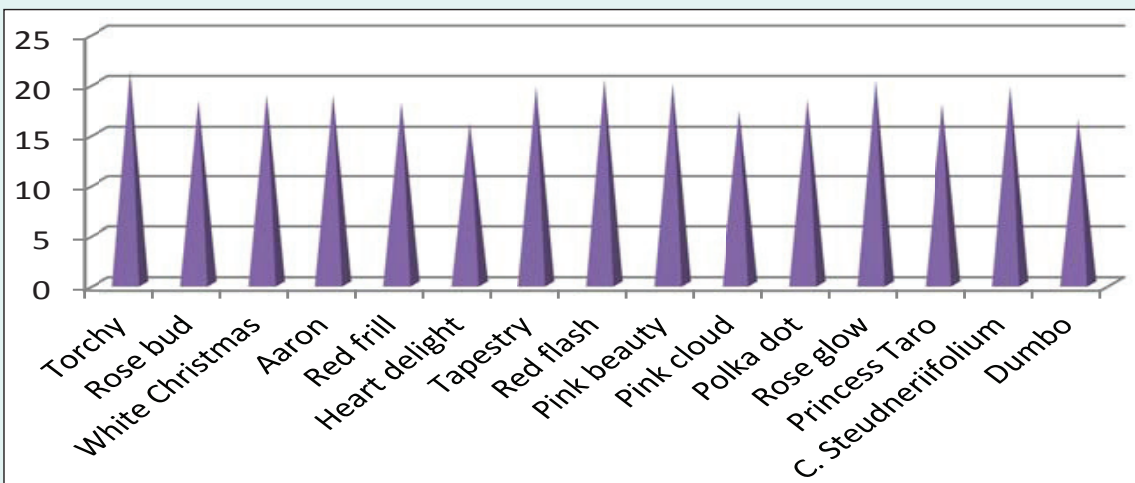
Diversity in length and width of leaf (cm) as influenced by different types of Caladium



Variability in Petiole length (cm) of different cultivars of Caladium



Girth of petiole (mm) as influenced as different types of Caladium



Description of selected Caladium cultivars

Torchy

General information:

It is a Fancy Red Variety with heart shaped leaves. It has dark pink to red leaves with green margins and pink coloured veins. The colour of the petiole is light brown. Abaxial (lower) leaf blade colour is light pink with light green margin. It prefers partial to full shade. It tolerates full sun. Mature plant grows to a height of 18” - 24” tall. It needs water regularly and is suitable for growing in containers. It can be planted at a spacing of 6-9 in. (15-22 cm).

Salient features	
Plant Height	34.50 cm
No. of Leaves	9.67
Length of leaf	22.67 cm
Width of leaf	16.00 cm
Petiole length	34.00 cm
Petiole girth	21.187 mm
Petiole colour	Light brown
Leaf shape	Heart shaped



Rose bud

General information:

It comes under Fancy Caladium group with heart shaped leaves. It has attractively coloured foliage, excellent proportions and graceful heart-shaped leaves. Rosebud caladium is a splashy variety with light green leaves and pink ribs. Abaxial (lower) leaf blade colour is green. It prefers filtered sun or partial to full shade. Mature plant grows to a height of 12-24". It has eye-catching, bright-green foliage with pink centres and looks spectacular in any shady area. It is suitable for planting in pots and planters.

Salient features	
Plant Height	28.00 cm
No. of Leaves	5
Length of leaf	19.00 cm
Width of leaf	15.50 cm
Petiole length	27.00 cm
Petiole girth	18.34 mm
Petiole colour	Light green
Leaf shape	Heart shaped

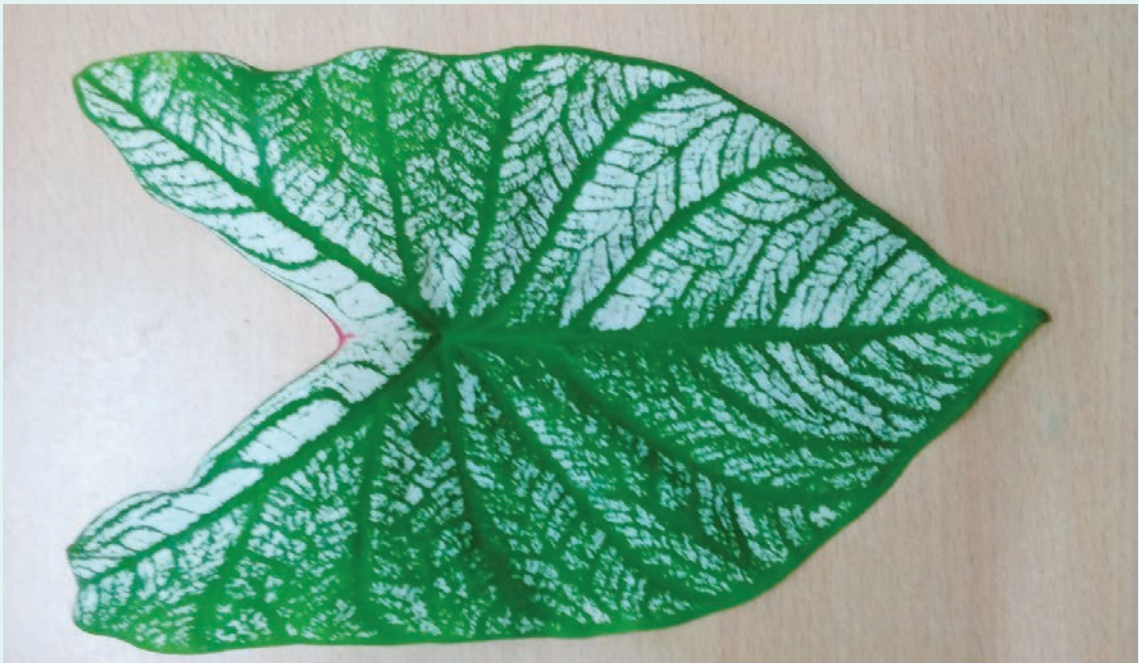


White Christmas

General information:

White Christmas is a very popular caladium variety known for its big, snow-white heart shaped leaves and distinctive and pronounced deep green mid-veins and deep green edges or borders. Petiole colour is light green with light black streaks. Abaxial (lower) leaf blade colour is light green and white. It is relatively a tall variety, measuring 18 to 24 inches. It is a very distinctive white and green caladium in the Fancy White group. It is a marvellous addition to shady garden corners that need a little brightening up. It prefers filtered sun, full shade to partial shade. It is suitable for mass planting and looks attractive and eye catching in groups of three or more, or when mixed with other caladiums. It can be planted in pots or as spectacular ground cover.

Salient features	
Plant Height	32.83 cm
No. of Leaves	7.67
Length of leaf	22.33 cm
Width of leaf	15.00 cm
Petiole length	32.333 cm
Petiole girth	18.92 mm
Petiole colour	Light green
Leaf shape	Heart shaped



Aaron

General information:

It is sturdy white caladium which comes under typical Fancy leaf Caladium group with heart shaped leaves. It has creamy white leaves with greenish white veins and contrasting dark green borders or margins. Petiole as well as abaxial (lower) leaf blade is green in colour. Mature plant grows to a height of 12 to 24 inches tall with a medium to large leaf. It is suited for planting in the sunny locations in your landscape as well as in shady areas, hence a versatile “classic” caladium. It can be used for mass planting in borders or for container planting which gives a spectacular look. It needs water regularly and frequently during hot, dry weather.

Salient features	
Plant Height	34.00 cm
No. of Leaves	14.67
Length of leaf	16.00 cm
Width of leaf	10.00 cm
Petiole length	30.33 cm
Petiole girth	18.84 mm
Petiole colour	Green
Leaf shape	Heart shaped



Red frill

General information:

It comes under Strap Leaf group of Caladium. The plants are shorter with narrow lance-shaped leaves. The leaves are a nice bright deep solid pinkish red with pinkish red central veins and a thin wavy dark green margin or edges. Its leaves appear frilled, creating a distinctive appearance throughout the season. Petiole is black in colour. Abaxial (lower) leaf blade colour is light pink with green edges. This variety will not stand upright as their Fancy heart shaped leaf counterparts. Red Frill caladiums are suited for planting in hanging baskets or planting in front rows, edges or landscape borders since it has a short and compact nature. This is a sun tolerant caladium variety but does best in well-shaded areas. Mature plant grows to a height of 6"-14" tall with small and narrow leaves. It can be planted at a spacing of 10-12" apart. It looks lush and vibrant when planted in shady border or containers or garden beds.

Salient features	
Plant Height	16.67 cm
No. of Leaves	3.00
Length of leaf	16.33 cm
Width of leaf	9.67 cm
Petiole length	16.17 cm
Petiole girth	18.15 mm
Petiole colour	Black
Leaf shape	Lance-shaped



Heart delight

General information:

It is a strap pink variety. It has crimson coloured leaves with contrasting mottled light and dark green coloured margins or borders and is very much appealing to the eyes. Leaves tend to go to a fuller dark red centre as they mature. Petiole as well as abaxial (lower) leaf blade is green in colour. It has light pink coloured veins. It is characterized by upright and mounding uniform plant growth habit; intermediate to tall plant size (18” to 24” tall); vigorous and dense growth habit; lance or strap type leaves with red-coloured veins. It prefers full sun to full shade.

Salient features	
Plant Height	24.17 cm
No. of Leaves	14.67
Length of leaf	11.00 cm
Width of leaf	9.83 cm
Petiole length	23.67 cm
Petiole girth	16.14 mm
Petiole colour	Green
Leaf shape	Strap shaped



Tapestry

General information:

Tapestry is a fancy-leaved gorgeous variety with large, attractive pink blotches and red petioles. It is suited for planting in large pots, planters or containers as well as for general landscape use. It is a vigorous plant with large heart-shaped deep green foliage (12” tall) with vibrant crimson or pink main veins. The central portion of the leaves have random white or cream or pink spots or blotches. Copious white, red, or pinkish blotches of various sizes, both single and coalesced, appear between the veins. The under surface of the leaf is light pink with green margin. Leaves are minimally frilly. Petioles of this type are mostly erect. Colour is gray red with streaks of light brown near the apex, and it changes to gray purple with streaks of black near the base.

Salient features	
Plant Height	37.50 cm
No. of Leaves	4.00
Length of leaf	20.00 cm
Width of leaf	13.00 cm
Petiole length	37.00 cm
Petiole girth	19.65 mm
Petiole colour	Light brown
Leaf shape	Heart shaped

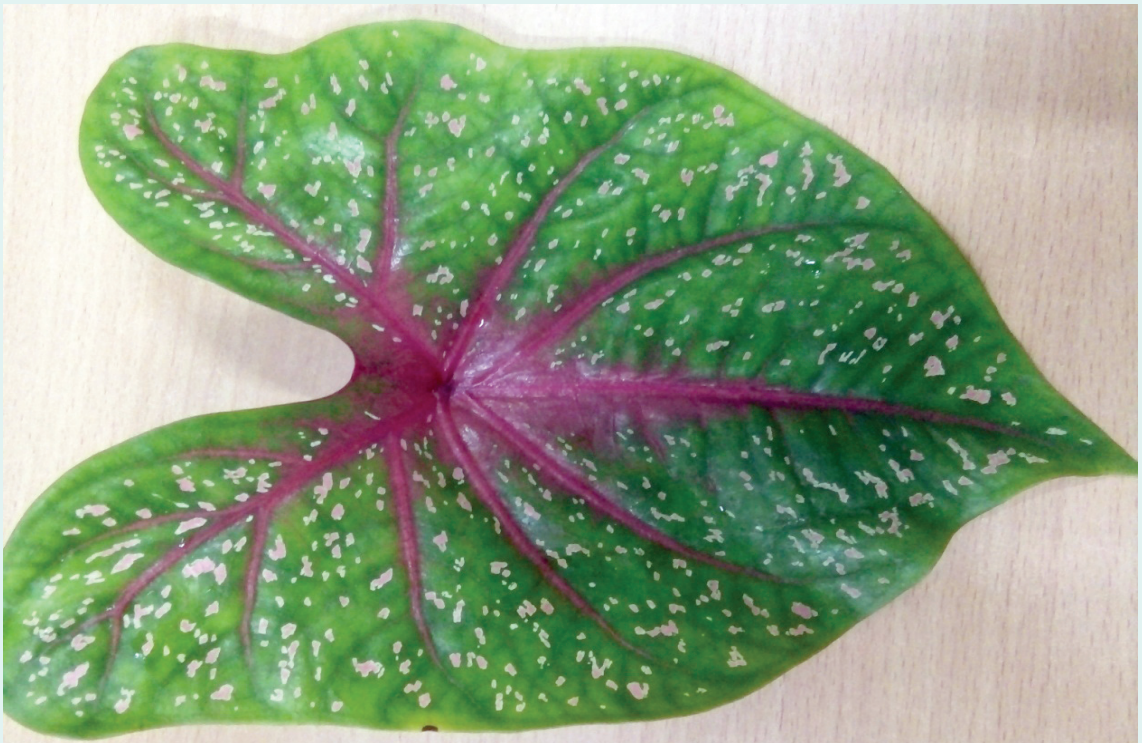


Red flash

General information:

It has green leaves with deep pink or red midribs or veins and speckled with light pink and white spots and edged in deep green. Red Flash Caladium is a sun-tolerant caladium with heart shaped leaves and comes under Fancy group of caladiums. Petiole colour is green with black streaks. Abaxial (lower) leaf blade colour is light pink and green. Mature plant grows to a height of 10 to 30 inches at maturity. It does well in full sun as well as partial shade. They need water regularly.

Salient features	
Plant Height	47.00 cm
No. of Leaves	3.33
Length of leaf	31.67 cm
Width of leaf	23.17 cm
Petiole length	46.50 cm
Petiole girth	20.39 mm
Petiole colour	Green
Leaf shape	Heart shaped



Pink beauty

General information:

It is a medium-sized caladium which comes under Fancy pink Caladium group with heart shaped leaves. Dark or bright pink veins with medium pink blush or splashes over a green background and framed or surrounded by green edge characterize the foliage of Pink Beauty. Petiole colour is green with black stripes. Abaxial (lower) leaf blade colour is light pink centre surrounded by green margins. It prefers filtered sun or partial shade to full shade. It grows to a height of 10"-24" tall. It is appropriate for planting in garden beds, borders and containers, and works well in hanging baskets or as ground cover and is considered a delightful, elegant and eye-catching variety. It can be planted indoor also.

Salient features	
Plant Height	28.00 cm
No. of Leaves	6.0
Length of leaf	21.67 cm
Width of leaf	12.17 cm
Petiole length	27.50 cm
Petiole girth	19.94 mm
Petiole colour	Green
Leaf shape	Heart shaped



Pink cloud

General information:

It is a Fancy Pink variety with medium heart shaped leaves. It can grow to a height of 15"-26" tall. It has light pink veins with medium to dark pink blush or splashes and a centre splashed with white spots or streaks over a green background and framed or surrounded by green edges. Petiole as well as abaxial (lower) leaf blade is green in colour. It is great for border planting in shady areas of landscape. It grows well in full shade to partial shade.

Salient features	
Plant Height	40.00 cm
No. of Leaves	20.00
Length of leaf	30.66 cm
Width of leaf	18.67 cm
Petiole length	39.50 cm
Petiole girth	17.33 mm
Petiole colour	Green
Leaf shape	Heart shaped



Polka dot

General information:

It comes under Fancy group of Caladium with heart shaped leaves. It is a dwarf Caladium that can grow to about 6 inches height. It has light green leaves, dark green midribs, with pink, red and white spots or blotches. The pink/white/red spots and blotches are either single or coalesced and appear between the dark green veins. Petiole as well as abaxial (lower) leaf blade is green in colour. . It is great for mass planting in shady areas of landscape. It grows well in full shade to partial shade.

Salient features	
Plant Height	39.00 cm
No. of Leaves	6.67
Length of leaf	19.33 cm
Width of leaf	12.67 cm
Petiole length	38.50 cm
Petiole girth	18.41 mm
Petiole colour	Green
Leaf shape	Heart shaped



Rose Glow

General information:

It comes under Fancy Caladium group with heart shaped leaves. It has attractively coloured foliage, excellent proportions and graceful heart-shaped leaves. Rose glow caladium is a splashy variety with pink and green leaves and pink ribs. Petiole colour is light green with black streaks. The deep pink venation pattern on its foliage creates a “burst”, for this variety. It’s colour is light pink with light green margin at the abaxial (lower) side. It prefers filtered sun or partial to full shade. Mature plant grows to a height of 12-24”. Leaves have light pink bursts and green edges. It has eye-catching, bright-green foliage with pink centres and looks spectacular in any shady area. It is suitable for planting in pots and planters.

Salient features	
Plant Height	43.33 cm
No. of Leaves	12.00
Length of leaf	24.83 cm
Width of leaf	18.00 cm
Petiole length	42.83 cm
Petiole girth	20.28 mm
Petiole colour	Light green
Leaf shape	Heart shaped



Black Caladium or Princess Taro

General information:

It is a popular type known for its distinctive and pronounced greenish black foliage. Petiole colour is light green with small streaks. Adaxial (upper) leaf blade is greenish black and abaxial (lower) side is light greenish black. It has prominent green veins and a large silvery green central blotch with black patches all around. It is relatively a small variety, measuring 18 to 24 inches. It is an excellent addition to shady garden corners that need a little brightening up. It prefers filtered sun, full shade to partial shade. It is suitable for mass planting. It can even be planted in pots or as spectacular ground cover.

Salient features	
Plant Height	26.67 cm
No. of Leaves	18.33
Length of leaf	14.00 cm
Width of leaf	10.50 cm
Petiole length	25.67 cm
Petiole girth	17.98 mm
Petiole colour	Light green
Leaf shape	Oval shaped



Caladium steudneriifolium

General information:

It has completely green leaves with deep green midribs or veins and speckled or spotted with white dots and edged in deep green. It is a sun-tolerant caladium. It has heart shaped leaves and comes under Fancy group of caladiums. Petiole as well as abaxial (lower) leaf blade is green in colour. Mature plant grows to a height of 10 to 24 inches at maturity. It does well in full sun as well as partial shade. They need water regularly.

Salient features	
Plant Height	44.33 cm
No. of Leaves	8.67
Length of leaf	29.67 cm
Width of leaf	18.67 cm
Petiole length	30.33 cm
Petiole girth	19.66 mm
Petiole colour	Green
Leaf shape	Heart shaped



Dumbo

General information:

This is a green leaved caladium. It has solid light green leaves and white veins. Dumbo can be best used in mixed containers or in the landscape. Petiole colour is light greenish white. Adaxial (upper) leaf blade as well as abaxial (lower) side is light greenish in colour. It has prominent white veins. It is relatively a small variety, measuring 2 feet tall. It is an excellent addition to for brightening up shady garden corners. It prefers filtered sun, full shade to partial shade. It is suitable for mass planting or even can be planted in pots or as spectacular ground cover.

Salient features	
Plant Height	26.250 cm
No. of Leaves	4.33
Length of leaf	11.60 cm
Width of leaf	9.20 cm
Petiole length	22.91 cm
Petiole girth	16.44 mm
Petiole colour	Light greenish white
Leaf shape	Strap shaped



People are not attentive of the choice and landscape performance of different varieties of caladiums. Each type or cultivar of caladium may be assigned a particular landscape use or purpose. Based on the present study, we have identified promising caladium cultivars that could be used for various purposes in landscaping.

Different Caladium types / cultivars under study exhibited an implausible array of diversity for various traits studied and can be recommended for various landscape applications;

- Landscape
- Garden Beds
- Borders
- Edging purpose
- Hedges
- Indoor gardening
- Planters
- Mass planting
- Hanging baskets
- Vertical gardens
- Container plantings
- General Garden Use etc.

Recommendation of Caladium cultivars for various functions in landscaping

Based on the present study, we have identified Caladium cultivars that could be used for various purposes in Landscaping. The different caladium cultivars studied could be used to adorn the landscapes of residential and commercial settings. Our recommendations of caladium cultivars for various functions in landscaping are cited below. Accordingly we are recommending caladium cultivars like Torchy, Red flash and Rose Glow for using in garden beds. They possessed stunning colouration in the foliage. Red flash, Pink cloud, Polka dot and Pink beauty could be used for border planting since they are tall varieties. Medium tall Varieties like Tapestry, Aaron and White Christmas are well appropriate as hedges in shady areas. They possessed appealing colouration. White Christmas, Rose glow, Rose bud and Princess Taro could be used for container planting because of its dazzling and graceful appearance. They had a uniform plant growth pattern and consistent colouration. Varieties suited for hanging baskets include Red frill, Heart delight and Dumbo because of its compact dense nature. Rose bud, Pink cloud, Rose glow and Torchy could be planted in vertical gardens and they give bold texture because of its sharp contrast. They displayed attractive leaf characteristics like fancy leaves and peculiar colouration. Dwarf and compact types like Red frill, Heart delight

and Princess Taro can be used for interior decoration purpose. There was little or no disease and pest incidence on different caladium cultivars evaluated. This is firsthand information on the use of different caladium cultivars for various purposes in landscaping. The information derived out of this study will definitely help people involved in ornamental nursery industry to give appropriate planting recommendations of caladiums for their clients or customers.



Caladium cultivars recommended to function for various purposes in landscaping

The results of the present study reflect the suitability of different caladium cultivars for various purposes in landscaping. Caladium is thus a spectacular foliage beauty with inconspicuous bloom. Caladiums can provide a glorious setting for the landscape by coordinating or contrasting the colour, leaf size and shape with the surrounding plantings

The marvellous foliages of different caladium cultivars





Conclusion

In conclusion, the ornamental aroids like caladiums are a boon to worldwide foliage plant industry. These ornamental foliage plants with inconspicuous blooms could be used in our landscapes to give a face-lift to the surroundings. The splendid foliage of Caladiums even challenges a brightest bloom for its colour, brightness and beauty. They enhance the visual appearance and beauty of the landscape. A multitude of foliage variegation patterns, shapes and wonderful colour combinations in caladiums allows for infinite design possibilities in gardening and landscaping. An ornamental foliage plant in a living room provides a hue of colour and helps to lessen harsh lines from furnishings, fixtures and architectural design. The mere existence of ornamental foliage plants in our surroundings conveys a vibrant feeling of liveliness and refreshment. The appearance and look of the our surroundings whether it's home or office or hospital is improved by the growing of ornamental foliage plants with dramatic colours, shapes and patterns. Aside from providing amusing aesthetic appeal, ornamental foliage plants make use of the empty vacant spots in an efficient way and fill our surroundings with fresh air. A lively and refreshing ambience could thus be created by growing ornamental foliage plants in the indoor as well as in the surroundings which will further help in making our lives better.

References:

- Eakhlas U. Ahmed, Takahiro Hayashi and Susumu Yazawa., 2004, Leaf colour stability during plant development as an index of leaf colour variation among micro propagated caladium. *HortScience*.39(2): 328-332
- R. D. Hartman, F. W. Zettler J. F. Knauss and Eleanor M. Hawkins., 1972, Seed propagation of caladium and dieffenbachia. Florida State Horticultural Society Proceedings, 1972
- R. J. Henny and T.A. Mellic., 1996, Flowering of Ornamental Aroid Genera with Gibberellic Acid. Central Florida Research and Education Center - Apopka Research Report RH-96-11
- Wilfret, G.J. 1986. Inheritance of leaf shape and color patterns in Caladium (Araceae). *HortScience* 21:750.
- Wilfret. 1979. Gibberellic acid (GA_3) stimulates flowering in *Caladium hortulanum* Birdsey. *HortScience* 14(1):72-73.
- Wilfret, G.J. 1983. Inheritance of vein color in caladium leaves. *HortScience* 18:610.
- Zhanao Deng and Brent K. Harbaugh., 2006, Independent inheritance of leaf shape and main vein colour in Caladium. *J.Amer. Soc. Hort.Sci.* 131(1): 53-58,2006

Photograph sources

Institute farm and laboratory

Farmers field



हर कदम, हर डगर
किसानों का हमसफर
भारतीय कृषि अनुसंधान परिषद

*Agr*search with a *h*uman touch