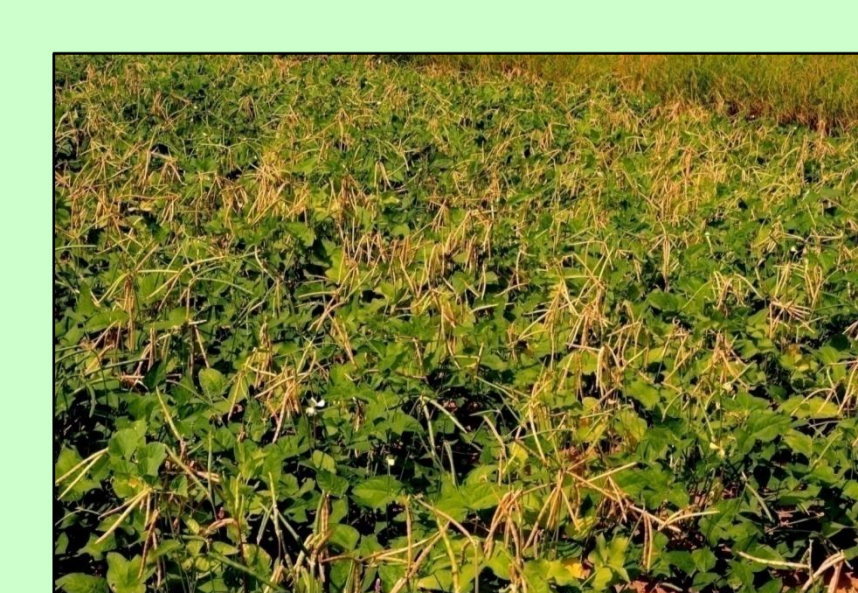


Quality Seed Accessibility Index

Preference of Cultivars and the Source of seed for Farmers in Ujaliya (2014-15 to 2016-17)

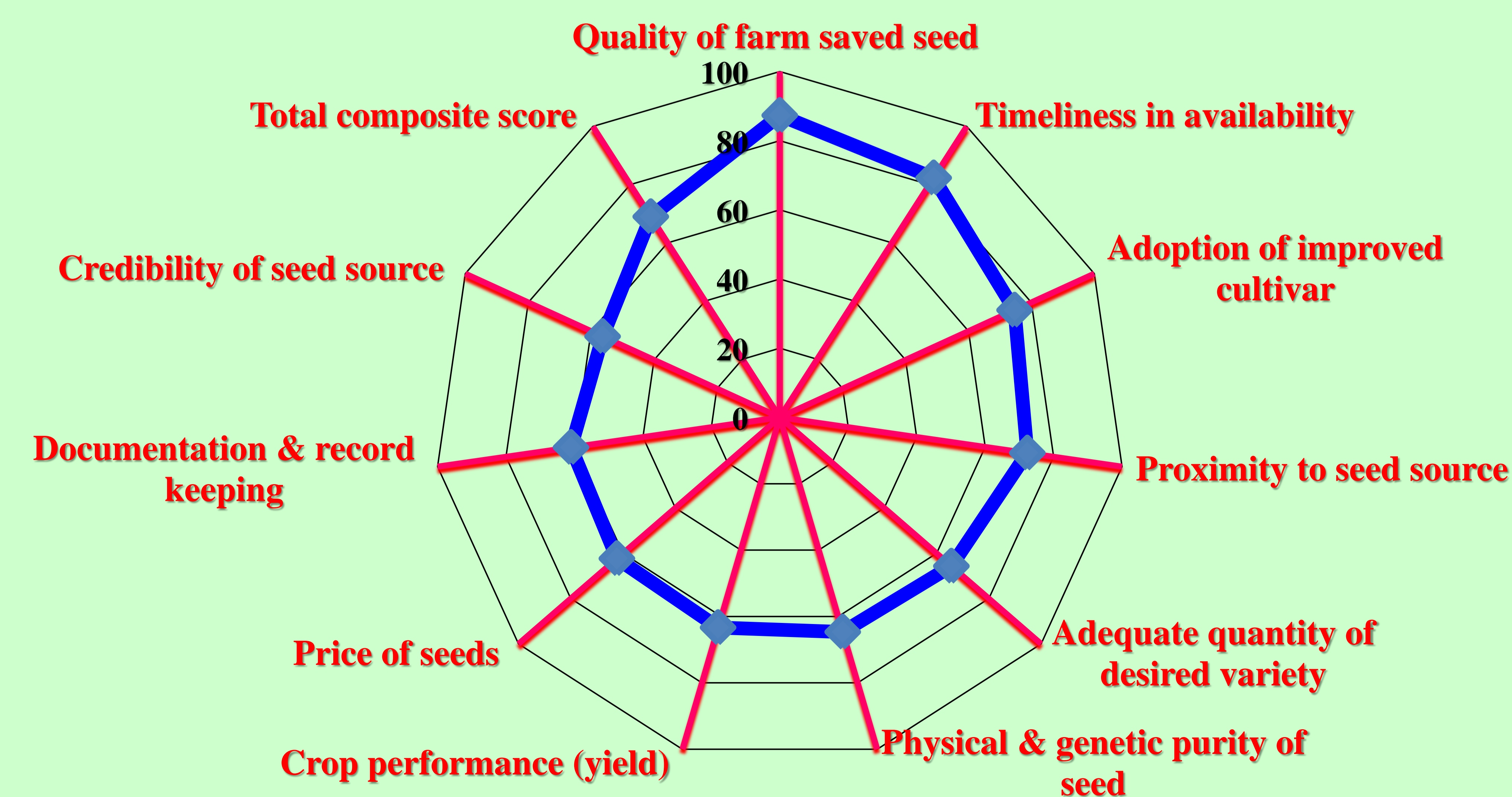
Crop	Major area under varieties/hybrids	Major source of seed	Varieties/hybrids grown*
Pearl millet	Hybrids/varieties	Seed dealers, RSSC, NSC, RAU-Mandore, CAZRI	Public sector composites (CZP-9802 and RAJ-171) and hybrids (HHB-67 Improved, RHB-177), hybrids of PSCs
Green gram	Varieties	RSSC, NSC, CAZRI, seed dealers, farm saved seeds	SML-668, GM-4, IPM 2-3, RMG-62, varieties of PSCs
Guar	Varieties	RSSC, NSC, CAZRI, seed dealers, farm saved seeds	RGC-1017, RGC-936
Moth bean	Varieties	RSSC, NSC, CAZRI, farm saved seeds	RMO-435, RMO-40, RMO-225, RMO-257, CZM-2.
Til	Varieties	RSSC, NSC, RAU-Mandore, CAZRI, farm saved seeds	RT-127, RT-46
Castor	Hybrids/Varieties	Seed dealers	Hybrids & varieties of PSCs
Cotton	Hybrids (Bt cotton)	Seed dealers	Hybrids of PSCs
Carrot	Farmers' selections, Varieties	Farm saved seeds	Farmers' own seeds
Onion	Varieties, farmers' selections	Farm saved seeds	Farmers' own seeds
Garlic	Varieties, farmers' selections	Farm saved seeds	Farmers' own seeds
Cumin	Varieties	RSSC, NSC, RAU-Mandore, CAZRI, seed dealers	Public (GC-4) & PSCs
Rapeseed and Mustard	Varieties/Hybrids	RSSC, NSC, CAZRI, seed dealers	Varieties of public (Pusa bold) and hybrids of PSCs
Isabgol	Varieties	RSSC, NSC, farm saved seeds	Public sector (GI-2, RI-29)
Wheat	Varieties, farmers' selections	Seed dealers, farm saved seeds	Sharbati selection, Raj 3077, Raj 1482, Lok-1.
Taramira	Varieties	RSSC, NSC, seed dealers, farm saved seeds	Public (RTM-2002), PSCs



Accessibility Index for Parameters affecting Access to Quality Seed (as on rabi 2016-17)

Sl. No.	Parameter	Mean Score	Accessibility Index	Rank
1	Quality of farm saved seed	4.37	87.33	I
2	Timeliness in availability	4.12	82.33	II
3	Adoption of improved cultivar	3.73	74.67	III
4	Proximity to seed source	3.62	72.33	IV
5	Adequate quantity of desired variety	3.28	65.67	V
6	Physical and genetic purity of seed	3.23	64.67	VI
7	Crop performance (yield)	3.17	63.33	VII
8	Price of seeds	3.12	62.33	VIII
9	Documentation and record keeping	3.05	61.00	IX
10	Credibility of seed source	2.82	56.33	X
Total Composite Score		3.45	69.00	

Accessibility Index



(1) *The list of varieties/hybrids is not exhaustive. (2) RSSC = Rajasthan State Seeds Corporation; NSC = National Seeds Corporation; RAU-Mandore = Rajasthan Agriculture University, Mandore Campus, Jodhpur; CAZRI = Central Arid Zone Research Institute; PSCs = Private Seed Companies.