



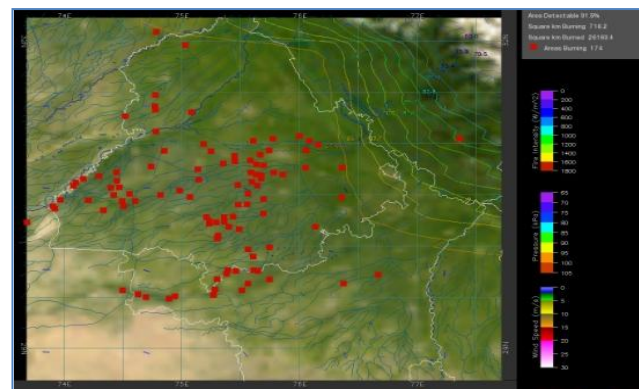
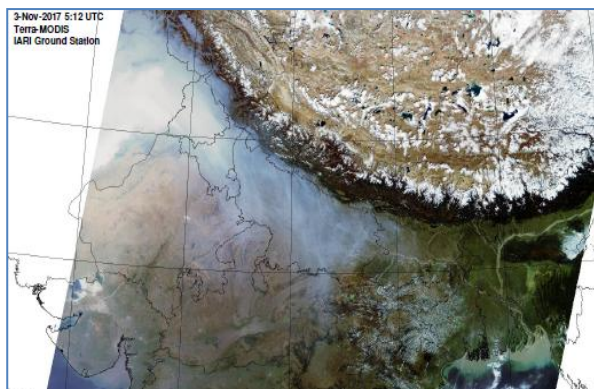
**Bulletin
No. 10**

**Events Date:
10-Oct-2019**

**Issued on:
11-Oct-2019**



MONITORING PADDY RESIDUE BURNING IN NORTH INDIA USING SATELLITE REMOTE SENSING DURING 2019



Prepared by:

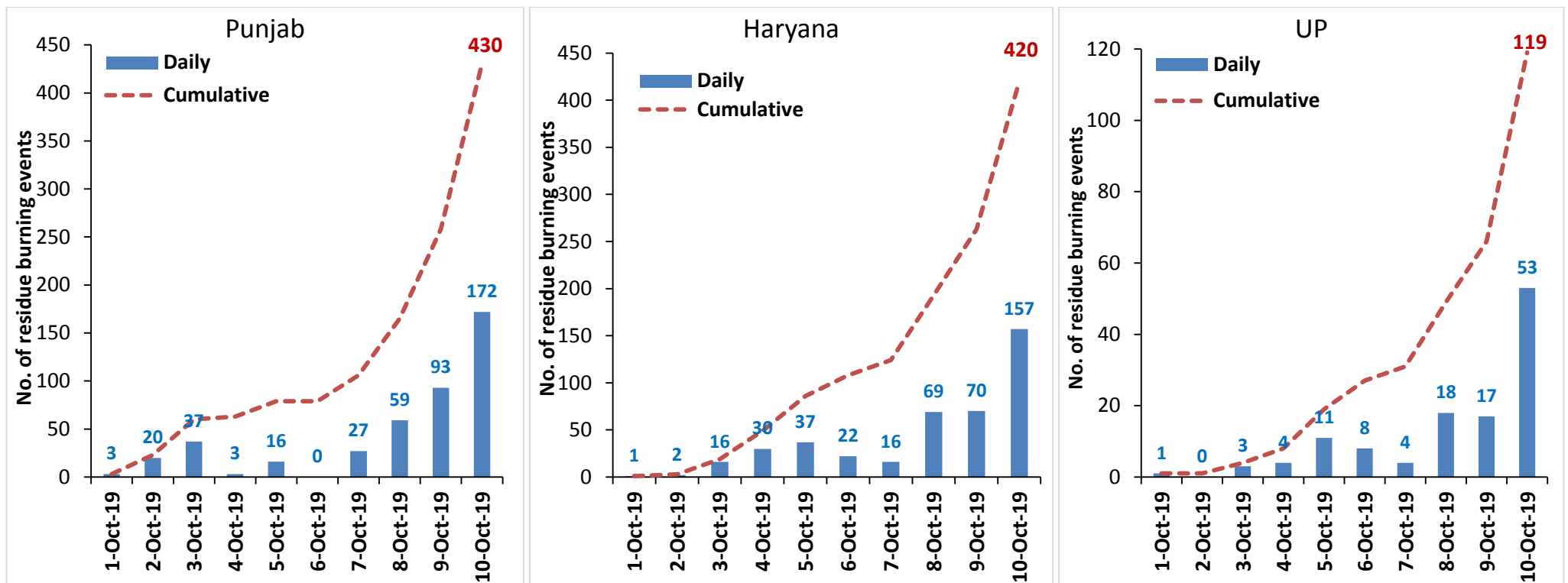
**Consortium for Research on Agroecosystem Monitoring and Modeling from Space (CREAMS) Laboratory,
Division of Agricultural Physics, ICAR – Indian Agricultural Research Institute, New Delhi – 110012**

<http://creams.iari.res.in>

Highlights for 10-October-2019

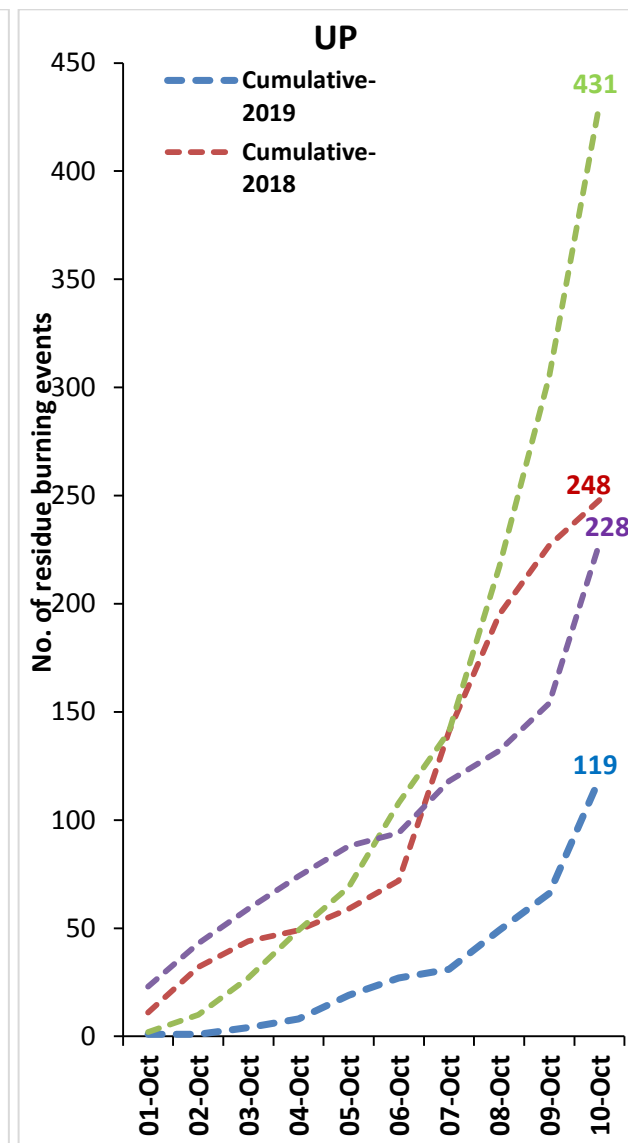
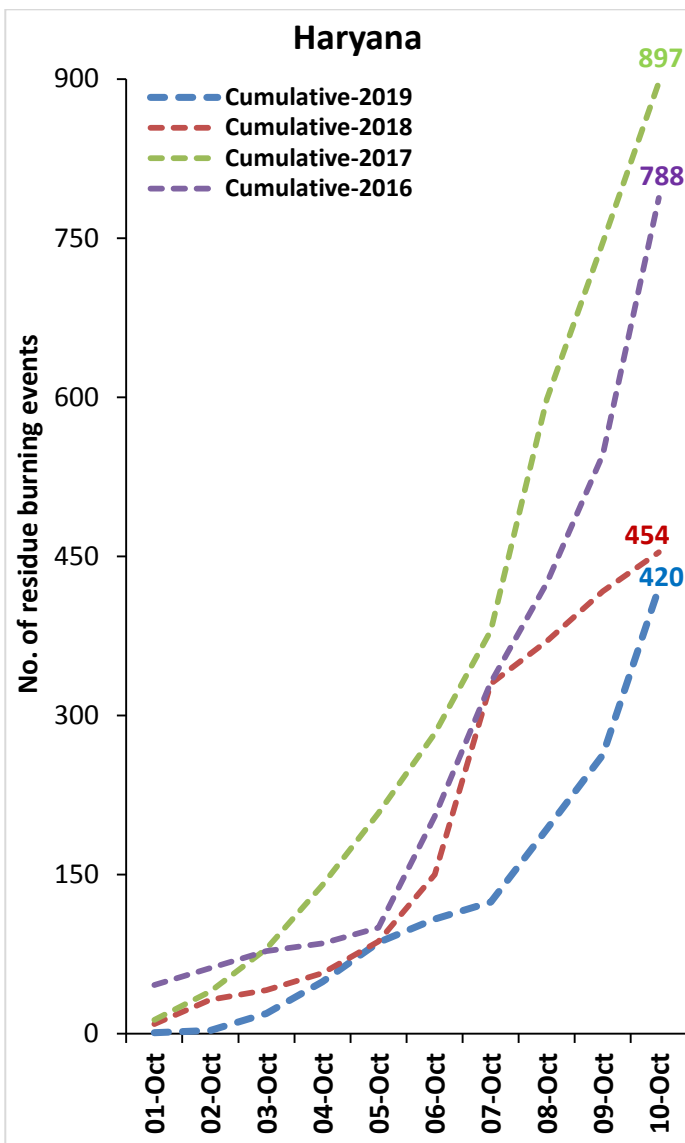
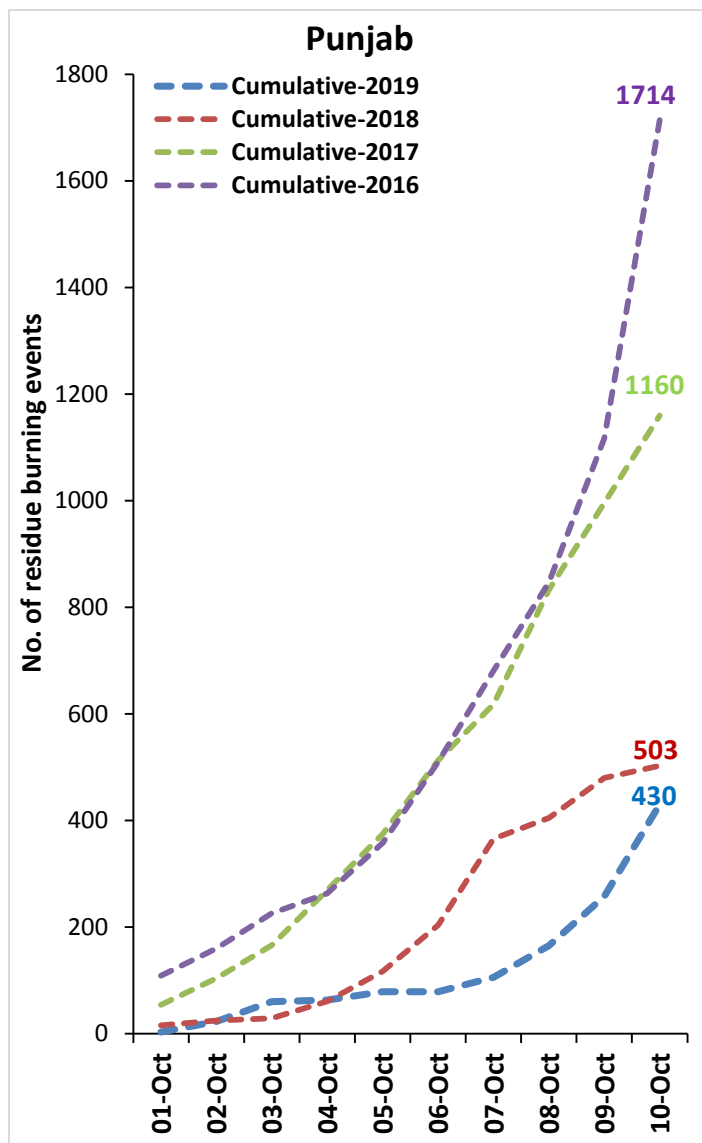
- Satellites detected **382** residue burning events in the three study States on 10-Oct-2019.
- The burning events detected on **10-Oct-2019** are **172**, **157** and **53** in Punjab, Haryana and UP, respectively.
- The number of events has doubled from **180** on **09-Oct-2019** to **382** on **10-Oct-2019** in the three states.
- Total **969** burning events were detected in the three States between **01-Oct-2019** and **10-Oct-2019**, which are distributed as **430**, **420** and **119** in Punjab, Haryana and UP, respectively.
- Overall, the total burning events recorded in the three states are **19.5%** less than in 2018 till date. This reduction is **14.5%** in Punjab, **7.4%** in Haryana and **52%** in UP in the current season as compared to 2018.

Temporal distribution of residue burning events for the three study States in 2019

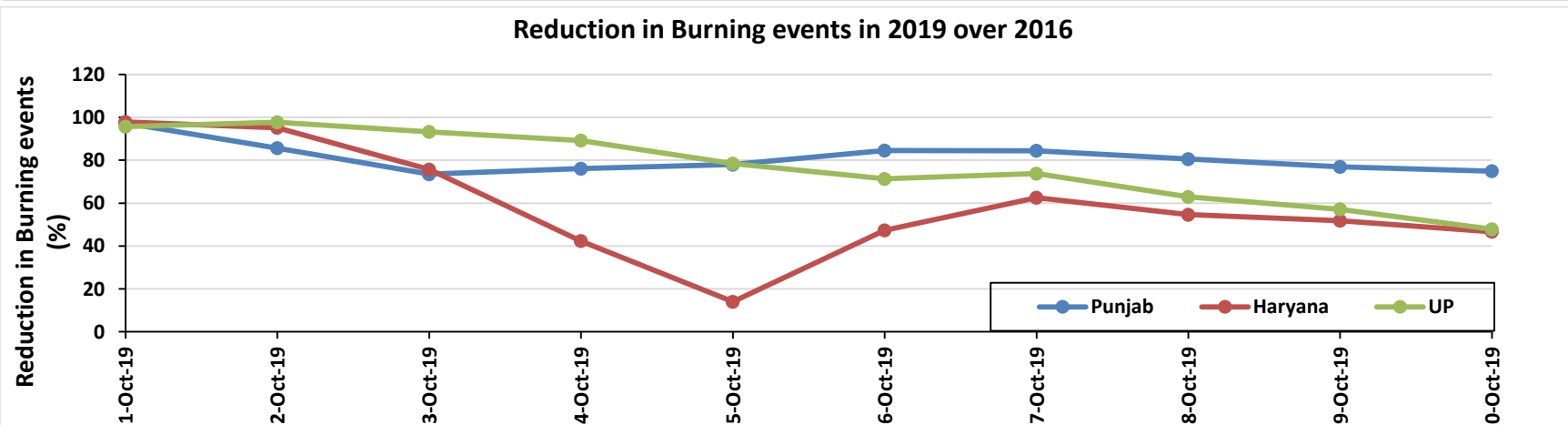
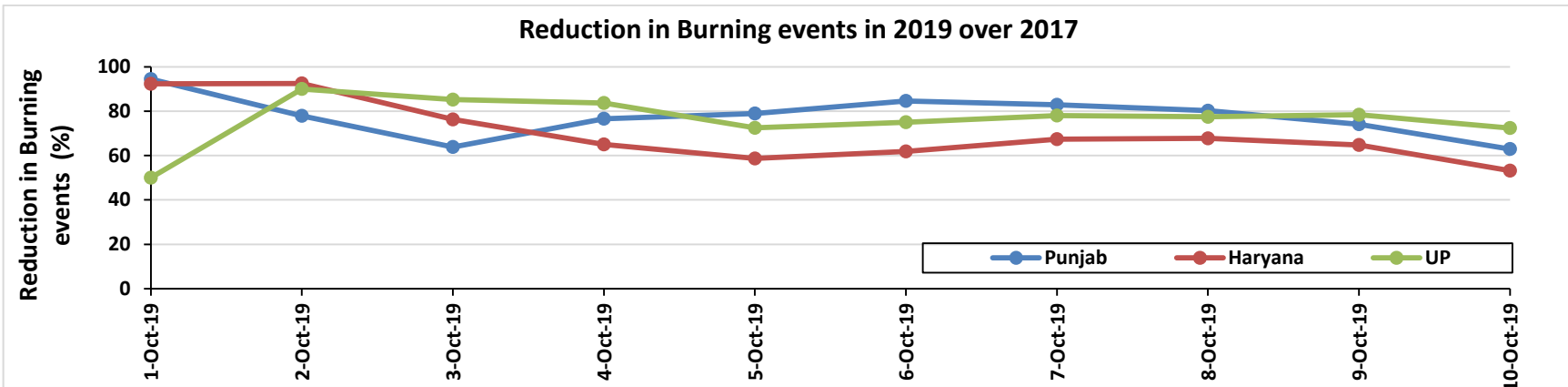
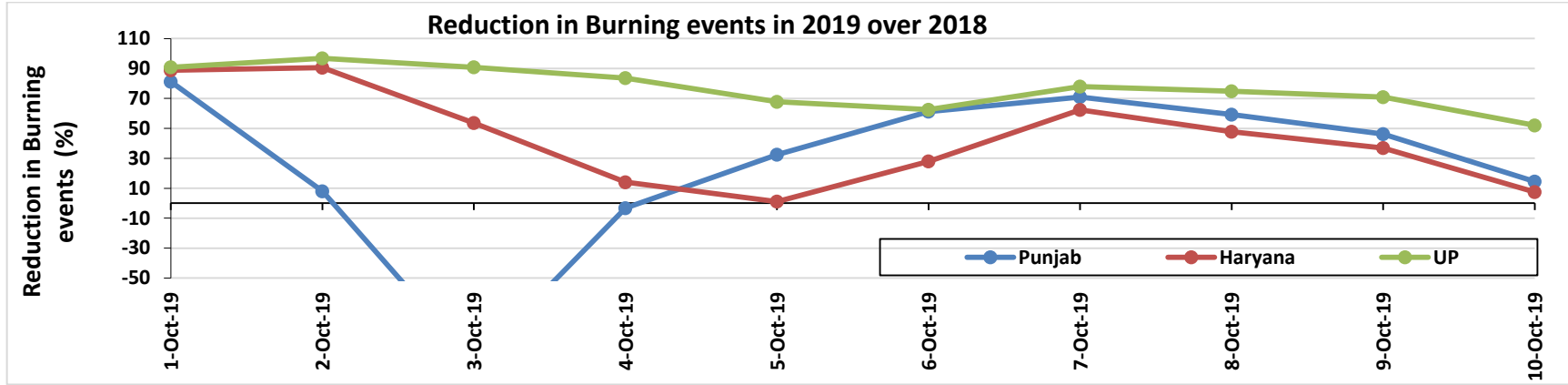


Comparison of residue burning events in current year (2019) with previous years (2018, 2017 & 2016) for the three study States

(01-Oct to 10-Oct)

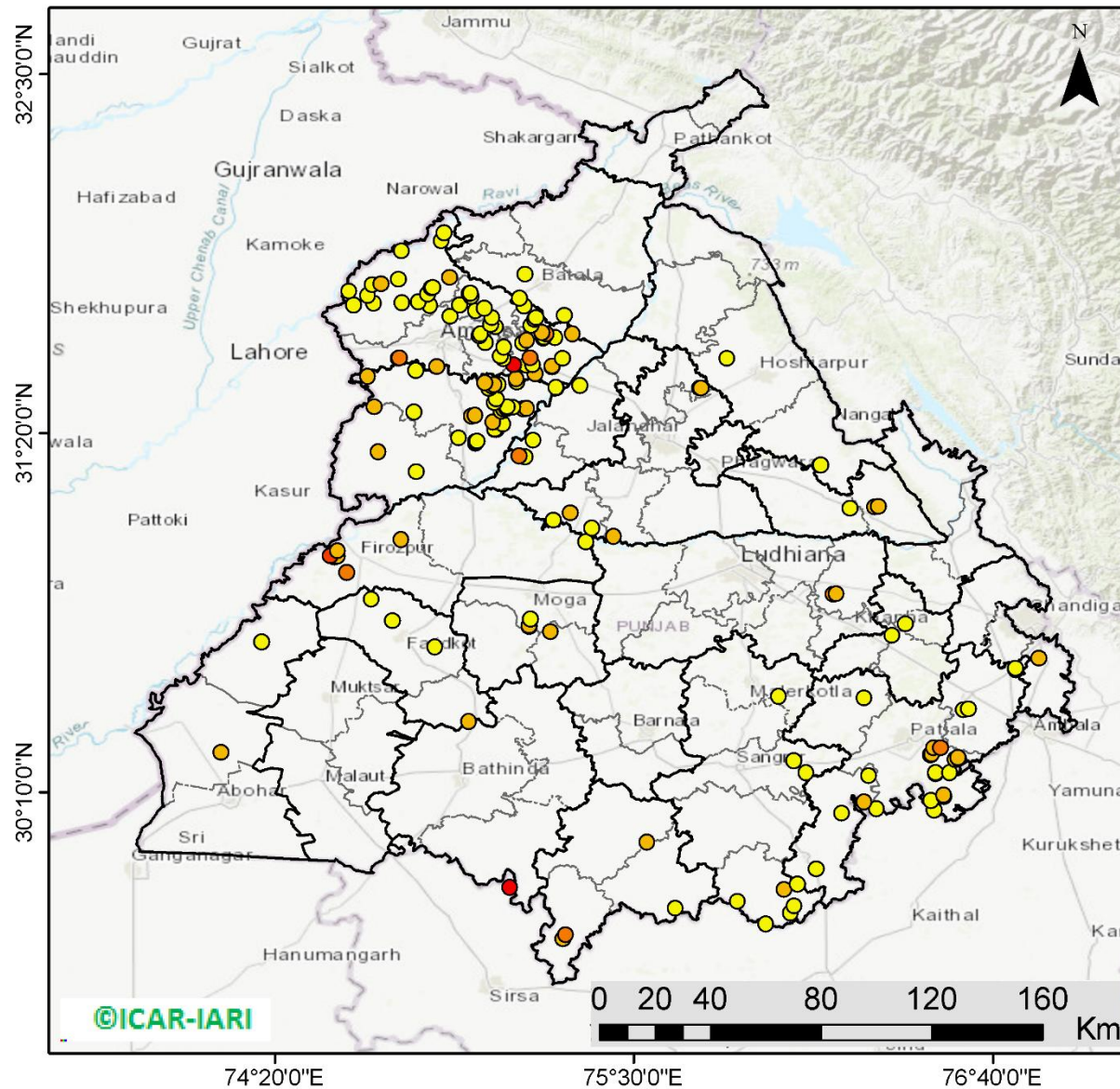


Percent Reduction in Burning events in 2019 over 2018, 2017 and 2016 (Daily Cumulative)



(a) Punjab

RICE RESIDUE BURNING IN PUNJAB



172 burning events detected in Punjab on 10th October 2019

Fire Intensity (W/m²)

- 0 - 5
- 6 - 10
- 11 - 15
- 16 - 20
- >20



<http://geoportal.icar.gov.in:8080/geoexplorer/composer/>

Details of residue burning events in Punjab on 10-Oct-2019

S. No.	District	Tehsil / Block	Satellite	Longitude	Latitude	Time (IST)	Day / Night	Fire Power (W/m2)
1	AMRITSAR	AJNALA	S-NPP	74.83797	31.74830	13:24:00	D	4.60
2	AMRITSAR	AJNALA	AQUA	74.58900	31.75000	13:45:00	D	5.00
3	AMRITSAR	AJNALA	S-NPP	74.65473	31.75589	13:24:00	D	2.00
4	AMRITSAR	AJNALA	S-NPP	74.74756	31.75755	13:24:00	D	3.60
5	AMRITSAR	AJNALA	S-NPP	74.80016	31.75942	13:24:00	D	4.20
6	AMRITSAR	AJNALA	S-NPP	74.63560	31.78079	13:24:00	D	4.60
7	AMRITSAR	AJNALA	S-NPP	74.82951	31.78535	13:24:00	D	3.00
8	AMRITSAR	AJNALA	AQUA	74.57500	31.79400	13:45:00	D	4.40
9	AMRITSAR	AJNALA	S-NPP	74.84261	31.80504	13:24:00	D	4.10
10	AMRITSAR	AJNALA	S-NPP	74.84686	31.80575	13:24:00	D	4.20
11	AMRITSAR	AJNALA	S-NPP	74.65001	31.81485	13:24:00	D	4.80
12	AMRITSAR	AJNALA	AQUA	74.67800	31.81800	13:45:00	D	5.60
13	AMRITSAR	AJNALA	S-NPP	74.73474	31.83252	13:24:00	D	2.20
14	AMRITSAR	AJNALA	AQUA	74.90100	31.83900	13:45:00	D	5.20
15	AMRITSAR	AJNALA	S-NPP	74.74577	31.92539	13:24:00	D	2.00
16	AMRITSAR	AJNALA	S-NPP	74.87505	31.95739	13:24:00	D	4.10
17	AMRITSAR	AJNALA	S-NPP	74.88298	31.98400	13:24:00	D	1.60
18	AMRITSAR	AMRITSAR I	AQUA	75.10900	31.55500	13:45:00	D	25.50
19	AMRITSAR	AMRITSAR I	S-NPP	75.07742	31.57438	13:24:00	D	3.20
20	AMRITSAR	AMRITSAR I	S-NPP	75.06676	31.58304	13:24:00	D	1.90
21	AMRITSAR	AMRITSAR I	S-NPP	75.01756	31.62711	13:24:00	D	3.40
22	AMRITSAR	AMRITSAR I	AQUA	74.99800	31.65000	13:45:00	D	6.60
23	AMRITSAR	AMRITSAR I	S-NPP	75.00230	31.65594	13:24:00	D	3.20
24	AMRITSAR	AMRITSAR I	S-NPP	75.05010	31.67838	13:24:00	D	1.80
25	AMRITSAR	AMRITSAR I	S-NPP	75.03523	31.68634	13:24:00	D	3.40
26	AMRITSAR	AMRITSAR I	S-NPP	75.03908	31.70788	13:24:00	D	3.20
27	AMRITSAR	AMRITSAR I	S-NPP	74.98598	31.73039	13:24:00	D	4.70
28	AMRITSAR	AMRITSAR I	S-NPP	75.01467	31.73864	13:24:00	D	2.60
29	AMRITSAR	AMRITSAR I	S-NPP	75.14348	31.74602	13:24:00	D	2.20
30	AMRITSAR	AMRITSAR I	S-NPP	74.93349	31.74958	13:24:00	D	3.60

31	AMRITSAR	AMRITSAR I	S-NPP	74.97163	31.77776	13:24:00	D	2.00
32	AMRITSAR	AMRITSAR I	S-NPP	74.96513	31.78713	13:24:00	D	4.70
33	AMRITSAR	AMRITSAR I	S-NPP	74.96935	31.78783	13:24:00	D	4.70
34	AMRITSAR	AMRITSAR II	S-NPP	74.86010	31.54837	13:24:00	D	5.20
35	AMRITSAR	AMRITSAR II	S-NPP	74.73439	31.57628	13:24:00	D	11.20
36	AMRITSAR	AMRITSAR II	S-NPP	74.73866	31.57700	13:24:00	D	10.30
37	AMRITSAR	AMRITSAR II	S-NPP	74.90234	31.71299	13:24:00	D	1.40
38	AMRITSAR	BABA BAKALA	AQUA	75.11800	31.51000	13:45:00	D	6.30
39	AMRITSAR	BABA BAKALA	S-NPP	75.23442	31.54708	13:24:00	D	5.70
40	AMRITSAR	BABA BAKALA	S-NPP	75.23367	31.55043	13:24:00	D	5.70
41	AMRITSAR	BABA BAKALA	S-NPP	75.15062	31.55412	13:24:00	D	3.80
42	AMRITSAR	BABA BAKALA	S-NPP	75.17227	31.55420	13:24:00	D	2.50
43	AMRITSAR	BABA BAKALA	AQUA	75.26800	31.57600	13:45:00	D	5.00
44	AMRITSAR	BABA BAKALA	S-NPP	75.16283	31.57697	13:24:00	D	11.90
45	AMRITSAR	BABA BAKALA	S-NPP	75.07748	31.61268	13:24:00	D	3.90
46	AMRITSAR	BABA BAKALA	S-NPP	75.13955	31.62644	13:24:00	D	4.70
47	AMRITSAR	BABA BAKALA	AQUA	75.15200	31.63500	13:45:00	D	5.20
48	AMRITSAR	BABA BAKALA	AQUA	75.20600	31.64200	13:45:00	D	6.30
49	AMRITSAR	BABA BAKALA	S-NPP	75.24384	31.64364	13:24:00	D	3.20
50	AMRITSAR	BABA BAKALA	S-NPP	75.20902	31.64485	13:24:00	D	2.50
51	AMRITSAR	BABA BAKALA	S-NPP	75.21511	31.65625	13:24:00	D	12.40
52	AMRITSAR	BABA BAKALA	S-NPP	75.30131	31.65655	13:24:00	D	7.00
53	AMRITSAR	BABA BAKALA	AQUA	75.20200	31.66000	13:45:00	D	8.90
54	AMRITSAR	BABA BAKALA	S-NPP	75.16586	31.68286	13:24:00	D	4.80
55	AMRITSAR	BABA BAKALA	AQUA	75.17800	31.70200	13:45:00	D	7.30
56	AMRITSAR	BABA BAKALA	S-NPP	75.18250	31.70736	13:24:00	D	2.70
57	BATHINDA	TALWANDI SABO	S-NPP	75.09742	29.85786	13:24:00	D	25.60
58	FARIDKOT	FARIDKOT	S-NPP	74.85450	30.63823	13:24:00	D	3.60
59	FARIDKOT	FARIDKOT	S-NPP	74.71572	30.72391	13:24:00	D	1.90
60	FARIDKOT	FARIDKOT	S-NPP	74.64701	30.79256	13:24:00	D	1.60
61	FARIDKOT	JAITO	S-NPP	74.96407	30.39679	13:24:00	D	7.50
62	FATEHGARH SAHIB	ALMOH	S-NPP	76.33830	30.67621	13:24:00	D	2.50
63	FATEHGARH SAHIB	BASSI PATHANAN	S-NPP	76.38136	30.71319	13:24:00	D	1.80
64	FAZILKA	FAZILKA	AQUA	74.15900	30.29600	13:45:00	D	7.20

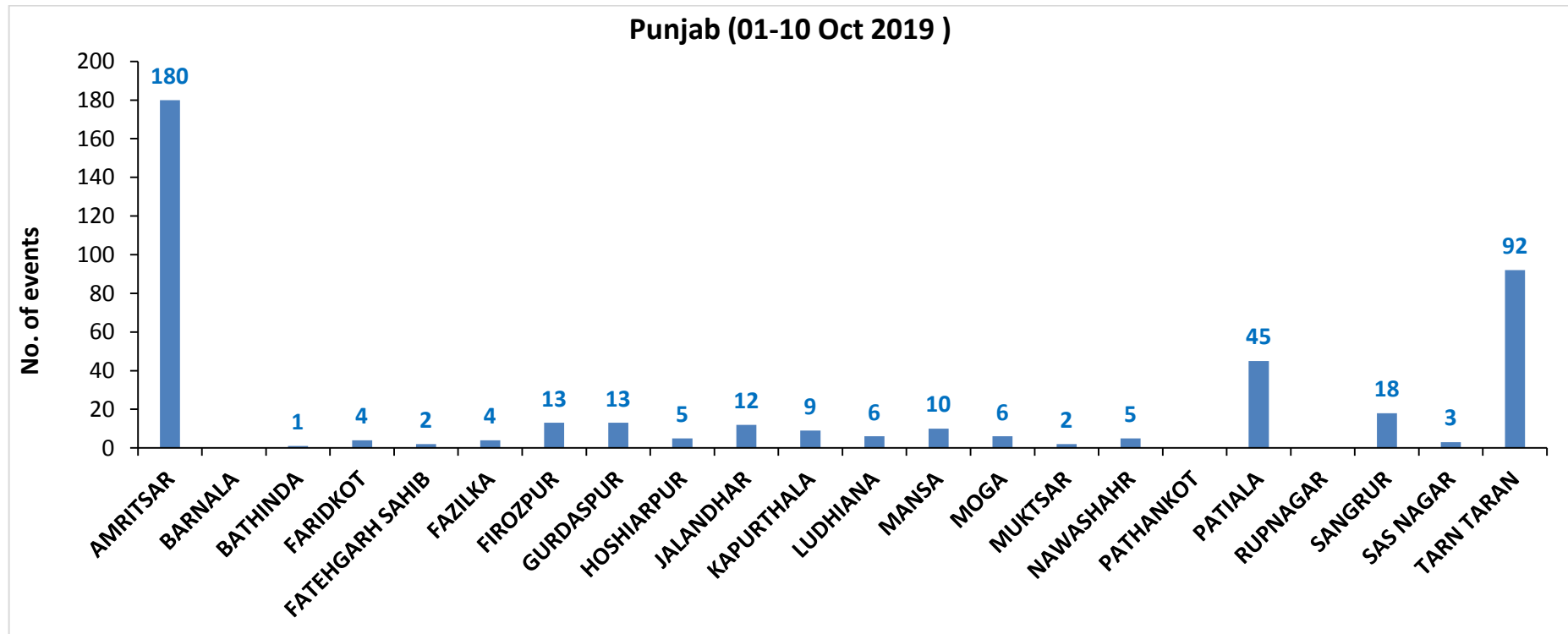
65	FAZILKA	JALALABAD	S-NPP	74.29096	30.65485	13:24:00	D	4.10
66	FIROZPUR	FIROZPUR	AQUA	74.56800	30.88100	13:45:00	D	13.10
67	FIROZPUR	FIROZPUR	AQUA	74.52700	30.93000	13:45:00	D	6.70
68	FIROZPUR	FIROZPUR	AQUA	74.53700	30.93200	13:45:00	D	6.20
69	FIROZPUR	FIROZPUR	S-NPP	74.51354	30.93414	13:24:00	D	17.90
70	FIROZPUR	FIROZPUR	AQUA	74.53700	30.95100	13:45:00	D	6.30
71	FIROZPUR	FIROZPUR	S-NPP	74.74358	30.98788	13:24:00	D	7.20
72	FIROZPUR	ZIRA	S-NPP	75.34386	30.98025	13:24:00	D	3.30
73	GURDASPUR	BATALA	AQUA	75.27400	31.71500	13:45:00	D	4.50
74	GURDASPUR	BATALA	S-NPP	75.12908	31.77142	13:24:00	D	1.30
75	GURDASPUR	BATALA	S-NPP	75.14706	31.84862	13:24:00	D	4.80
76	HOSHIARPUR	GARHSHANKAR	AQUA	76.10500	31.22800	13:45:00	D	12.00
77	HOSHIARPUR	GARHSHANKAR	S-NPP	76.10751	31.22957	13:24:00	D	2.90
78	HOSHIARPUR	HOSHIARPUR	S-NPP	75.80320	31.57553	13:24:00	D	3.90
79	JALANDHAR	JALANDHAR II	S-NPP	75.71429	31.47889	13:24:00	D	17.40
80	JALANDHAR	JALANDHAR II	S-NPP	75.71838	31.47955	13:24:00	D	7.00
81	JALANDHAR	NAKODAR	S-NPP	75.43427	30.99865	13:24:00	D	7.30
82	JALANDHAR	SHAHKOT	S-NPP	75.36401	31.02522	13:24:00	D	4.50
83	JALANDHAR	SHAHKOT	S-NPP	75.23782	31.04965	13:24:00	D	2.10
84	JALANDHAR	SHAHKOT	S-NPP	75.23820	31.05036	13:24:00	D	2.40
85	JALANDHAR	SHAHKOT	AQUA	75.29400	31.07400	13:45:00	D	5.40
86	KAPURTHALA	KAPURTHALA	S-NPP	75.32395	31.48796	13:24:00	D	2.50
87	KAPURTHALA	SULTANPUR LODHI	S-NPP	75.14602	31.25590	13:24:00	D	4.00
88	KAPURTHALA	SULTANPUR LODHI	S-NPP	75.12776	31.25982	13:24:00	D	10.10
89	KAPURTHALA	SULTANPUR LODHI	S-NPP	75.17314	31.30915	13:24:00	D	3.60
90	LUDHIANA	SAMRALA	AQUA	76.14700	30.81000	13:45:00	D	13.10
91	LUDHIANA	SAMRALA	AQUA	76.15800	30.81100	13:45:00	D	8.10
92	MANSA	BUDHLADA	S-NPP	75.63455	29.78943	13:24:00	D	2.10
93	MANSA	BUDHLADA	AQUA	75.54300	30.00400	13:45:00	D	9.10
94	MANSA	SARDULGARH	AQUA	75.27000	29.69000	13:45:00	D	7.50
95	MANSA	SARDULGARH	S-NPP	75.27900	29.70250	13:24:00	D	12.10
96	MOGA	MOGA	S-NPP	75.16051	30.70340	13:24:00	D	3.00
97	MOGA	MOGA	S-NPP	75.15976	30.70676	13:24:00	D	6.60
98	MOGA	MOGA	S-NPP	75.16419	30.72919	13:24:00	D	3.30

99	MOGA	NIHAL SINGH WALA	AQUA	75.22900	30.68800	13:45:00	D	8.20
100	NAWASHAHR	BALACHAUR	AQUA	76.28300	31.09300	13:45:00	D	8.10
101	NAWASHAHR	BALACHAUR	AQUA	76.29400	31.09400	13:45:00	D	5.50
102	NAWASHAHR	NAWASHAHR	S-NPP	76.20288	31.08905	13:24:00	D	3.00
103	PATIALA	NABHA	S-NPP	76.24827	30.47165	13:24:00	D	2.40
104	PATIALA	PATIALA	AQUA	76.47600	30.10800	13:45:00	D	4.10
105	PATIALA	PATIALA	S-NPP	76.28878	30.11231	13:24:00	D	3.00
106	PATIALA	PATIALA	S-NPP	76.46505	30.14016	13:24:00	D	4.50
107	PATIALA	PATIALA	S-NPP	76.50764	30.15369	13:24:00	D	1.90
108	PATIALA	PATIALA	S-NPP	76.50696	30.15699	13:24:00	D	7.40
109	PATIALA	PATIALA	S-NPP	76.48080	30.22706	13:24:00	D	3.00
110	PATIALA	PATIALA	S-NPP	76.48012	30.23036	13:24:00	D	3.00
111	PATIALA	PATIALA	S-NPP	76.52546	30.23066	13:24:00	D	1.80
112	PATIALA	PATIALA	AQUA	76.54400	30.27400	13:45:00	D	7.20
113	PATIALA	PATIALA	AQUA	76.55500	30.27600	13:45:00	D	13.50
114	PATIALA	PATIALA	S-NPP	76.55249	30.27925	13:24:00	D	6.40
115	PATIALA	PATIALA	S-NPP	76.46416	30.28880	13:24:00	D	2.90
116	PATIALA	PATIALA	S-NPP	76.46816	30.28943	13:24:00	D	5.20
117	PATIALA	PATIALA	AQUA	76.47400	30.31000	13:45:00	D	6.60
118	PATIALA	PATIALA	S-NPP	76.49671	30.31099	13:24:00	D	11.30
119	PATIALA	RAJPURA	S-NPP	76.57035	30.43420	13:24:00	D	1.30
120	PATIALA	RAJPURA	S-NPP	76.58633	30.43670	13:24:00	D	2.40
121	PATIALA	RAJPURA	S-NPP	76.74195	30.56276	13:24:00	D	2.40
122	PATIALA	RAJPURA	AQUA	76.74000	30.56600	13:45:00	D	8.80
123	PATIALA	RAJPURA	S-NPP	76.74060	30.56936	13:24:00	D	1.80
124	PATIALA	SAMANA	S-NPP	76.09234	29.91716	13:24:00	D	3.50
125	PATIALA	SAMANA	S-NPP	76.17548	30.09771	13:24:00	D	4.80
126	PATIALA	SAMANA	AQUA	76.24800	30.13500	13:45:00	D	5.30
127	PATIALA	SAMANA	S-NPP	76.26284	30.21998	13:24:00	D	2.50
128	SANGRUR	MALERKOTLA	S-NPP	75.97123	30.47878	13:24:00	D	4.10
129	SANGRUR	MOONAK	S-NPP	75.92839	29.73880	13:24:00	D	4.10
130	SANGRUR	MOONAK	S-NPP	76.00941	29.77462	13:24:00	D	1.00
131	SANGRUR	MOONAK	S-NPP	76.02137	29.79724	13:24:00	D	2.10
132	SANGRUR	MOONAK	S-NPP	75.83744	29.81220	13:24:00	D	3.40

133	SANGRUR	MOONAK	S-NPP	75.98909	29.85059	13:24:00	D	5.40
134	SANGRUR	MOONAK	S-NPP	76.03152	29.86776	13:24:00	D	2.40
135	SANGRUR	SANGRUR	AQUA	76.06000	30.23000	13:45:00	D	4.90
136	SANGRUR	SANGRUR	S-NPP	76.01935	30.26933	13:24:00	D	3.10
137	SAS NAGAR	DERABASSI	S-NPP	76.81633	30.60146	13:24:00	D	7.10
138	TARN TARAN	KHADOOR SAHIB	AQUA	74.98600	31.29900	13:45:00	D	6.30
139	TARN TARAN	KHADOOR SAHIB	S-NPP	74.98653	31.30605	13:24:00	D	2.30
140	TARN TARAN	KHADOOR SAHIB	S-NPP	74.99075	31.30675	13:24:00	D	5.00
141	TARN TARAN	KHADOOR SAHIB	S-NPP	74.93123	31.31784	13:24:00	D	2.60
142	TARN TARAN	KHADOOR SAHIB	AQUA	75.05300	31.34400	13:45:00	D	13.40
143	TARN TARAN	KHADOOR SAHIB	S-NPP	75.04787	31.34416	13:24:00	D	2.30
144	TARN TARAN	KHADOOR SAHIB	S-NPP	75.04846	31.34506	13:24:00	D	2.50
145	TARN TARAN	KHADOOR SAHIB	S-NPP	75.07484	31.36344	13:24:00	D	3.50
146	TARN TARAN	KHADOOR SAHIB	S-NPP	75.04317	31.36860	13:24:00	D	5.50
147	TARN TARAN	KHADOOR SAHIB	AQUA	74.97300	31.38900	13:45:00	D	5.40
148	TARN TARAN	KHADOOR SAHIB	AQUA	74.98400	31.39100	13:45:00	D	5.50
149	TARN TARAN	KHADOOR SAHIB	S-NPP	74.78498	31.40241	13:24:00	D	3.70
150	TARN TARAN	KHADOOR SAHIB	S-NPP	75.06996	31.40446	13:24:00	D	2.60
151	TARN TARAN	KHADOOR SAHIB	AQUA	75.14100	31.41200	13:45:00	D	10.30
152	TARN TARAN	KHADOOR SAHIB	AQUA	75.07600	31.41300	13:45:00	D	6.70
153	TARN TARAN	KHADOOR SAHIB	AQUA	75.08700	31.41400	13:45:00	D	7.30
154	TARN TARAN	KHADOOR SAHIB	AQUA	75.15200	31.41400	13:45:00	D	6.70
155	TARN TARAN	KHADOOR SAHIB	S-NPP	75.10621	31.41744	13:24:00	D	2.90
156	TARN TARAN	KHADOOR SAHIB	S-NPP	75.08868	31.41802	13:24:00	D	3.70
157	TARN TARAN	KHADOOR SAHIB	S-NPP	75.04633	31.43191	13:24:00	D	3.30
158	TARN TARAN	KHADOOR SAHIB	S-NPP	75.05247	31.44338	13:24:00	D	2.50
159	TARN TARAN	KHADOOR SAHIB	S-NPP	75.02852	31.47816	13:24:00	D	2.10
160	TARN TARAN	KHADOOR SAHIB	S-NPP	75.24837	31.47907	13:24:00	D	2.40
161	TARN TARAN	KHADOOR SAHIB	S-NPP	75.24763	31.48242	13:24:00	D	4.20
162	TARN TARAN	KHADOOR SAHIB	S-NPP	75.03962	31.48699	13:24:00	D	5.20
163	TARN TARAN	KHADOOR SAHIB	S-NPP	75.06062	31.49049	13:24:00	D	5.00
164	TARN TARAN	KHADOOR SAHIB	AQUA	75.04500	31.49100	13:45:00	D	7.50
165	TARN TARAN	KHADOOR SAHIB	S-NPP	75.01556	31.49693	13:24:00	D	6.40
166	TARN TARAN	KHADOOR SAHIB	S-NPP	75.11932	31.50026	13:24:00	D	3.50

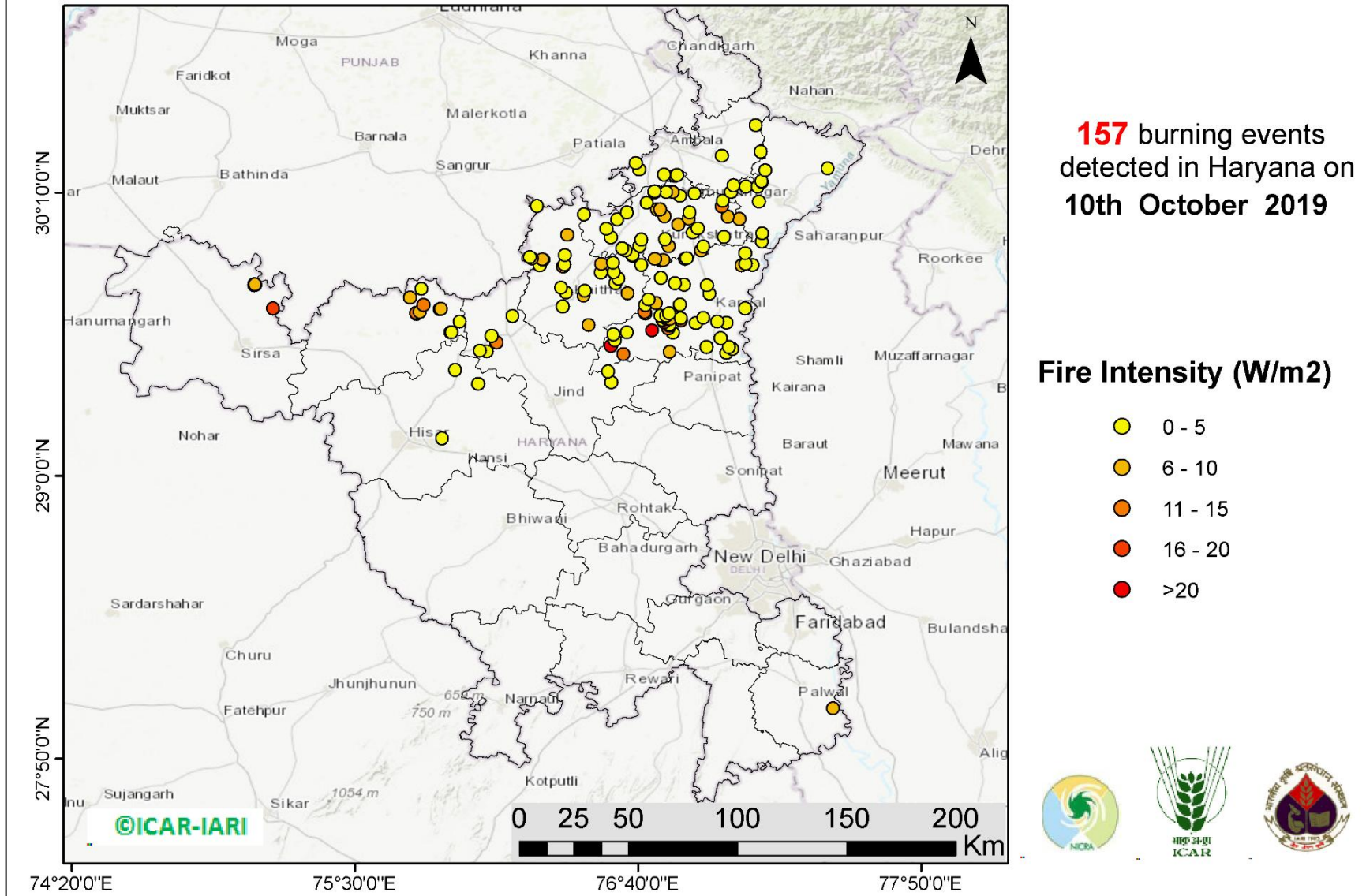
167	TARN TARAN	KHADOOR SAHIB	AQUA	74.63600	31.51800	13:45:00	D	5.90
168	TARN TARAN	KHADOOR SAHIB	AQUA	75.17900	31.52700	13:45:00	D	6.70
169	TARN TARAN	KHADOOR SAHIB	S-NPP	74.79214	31.53688	13:24:00	D	2.70
170	TARN TARAN	PATTI	S-NPP	74.79321	31.20690	13:24:00	D	1.90
171	TARN TARAN	PATTI	AQUA	74.67000	31.27300	13:45:00	D	6.00
172	TARN TARAN	PATTI	AQUA	74.65700	31.41900	13:45:00	D	9.60

District-wise cumulative number of residue burning events in Punjab (01 to 10-Oct 2019)



(b) Haryana

RICE RESIDUE BURNING IN HARYANA



<http://geoportal.icar.gov.in:8080/geoexplorer/composer/>

Details of residue burning events in Haryana on 10-Oct-2019

S. No.	District	Tehsil / Block	Satellite	Longitude	Latitude	Time (IST)	Day / Night	Fire Power (W/m2)
1	AMBALA	AMBALA	AQUA	76.82000	30.23700	13:45:00	D	7.30
2	AMBALA	AMBALA	S-NPP	76.77409	30.24221	13:24:00	D	2.50
3	AMBALA	AMBALA	AQUA	76.67200	30.26200	13:45:00	D	4.90
4	AMBALA	AMBALA	S-NPP	76.65762	30.28882	13:24:00	D	3.10
5	AMBALA	AMBALA	S-NPP	77.01261	30.31978	13:24:00	D	3.00
6	AMBALA	BARARA	S-NPP	77.05042	30.16977	13:24:00	D	1.90
7	AMBALA	BARARA	S-NPP	77.06098	30.19859	13:24:00	D	2.20
8	AMBALA	BARARA	S-NPP	77.17307	30.33744	13:24:00	D	3.30
9	AMBALA	NARAYANGARH	S-NPP	77.15150	30.44613	13:24:00	D	2.80
10	FATEHABAD	TOHANA	AQUA	75.89500	29.59100	13:45:00	D	5.00
11	FATEHABAD	TOHANA	S-NPP	75.89986	29.59122	13:24:00	D	3.20
12	FATEHABAD	TOHANA	S-NPP	75.93271	29.63457	13:24:00	D	3.50
13	FATEHABAD	TOHANA	S-NPP	75.75343	29.66876	13:24:00	D	10.80
14	FATEHABAD	TOHANA	S-NPP	75.75272	29.67211	13:24:00	D	10.80
15	FATEHABAD	TOHANA	AQUA	75.76600	29.67600	13:45:00	D	8.20
16	FATEHABAD	TOHANA	AQUA	75.85000	29.68700	13:45:00	D	7.00
17	FATEHABAD	TOHANA	S-NPP	75.85484	29.68884	13:24:00	D	7.20
18	FATEHABAD	TOHANA	AQUA	75.78200	29.70500	13:45:00	D	14.70
19	FATEHABAD	TOHANA	AQUA	75.72800	29.73400	13:45:00	D	7.20
20	FATEHABAD	TOHANA	S-NPP	75.77448	29.77076	13:24:00	D	2.30
21	HISAR	HISAR	S-NPP	75.86036	29.15384	13:24:00	D	1.70
22	HISAR	HISAR	S-NPP	76.00732	29.37776	13:24:00	D	3.90
23	HISAR	HISAR	AQUA	75.91300	29.43700	13:45:00	D	4.40
24	JIND	NARWANA	S-NPP	76.04197	29.51242	13:24:00	D	1.70
25	JIND	NARWANA	S-NPP	76.01627	29.51516	13:24:00	D	1.60
26	JIND	NARWANA	S-NPP	76.08415	29.55026	13:24:00	D	11.20
27	JIND	NARWANA	S-NPP	76.06245	29.57627	13:24:00	D	2.60
28	JIND	NARWANA	S-NPP	76.14932	29.65916	13:24:00	D	3.20
29	JIND	SAFIDON	S-NPP	76.55701	29.38471	13:24:00	D	1.70
30	JIND	SAFIDON	S-NPP	76.54404	29.42978	13:24:00	D	2.80

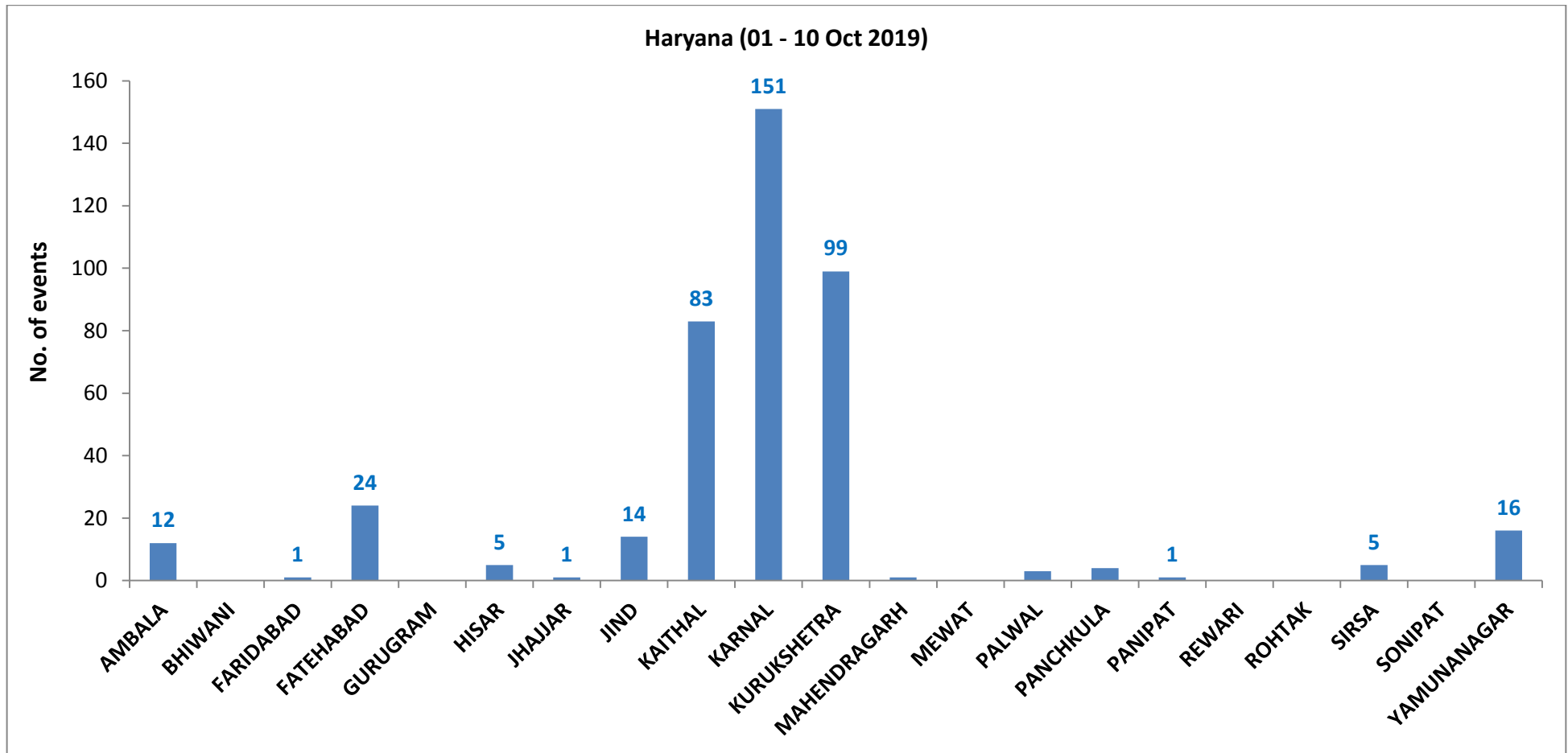
31	KAITHAL	GUHLA	S-NPP	76.22987	29.89608	13:24:00	D	7.30
32	KAITHAL	GUHLA	S-NPP	76.22044	29.90144	13:24:00	D	2.50
33	KAITHAL	GUHLA	S-NPP	76.37547	29.99333	13:24:00	D	6.60
34	KAITHAL	GUHLA	S-NPP	76.44477	30.07888	13:24:00	D	4.80
35	KAITHAL	GUHLA	S-NPP	76.25123	30.11320	13:24:00	D	2.00
36	KAITHAL	KAITHAL	AQUA	76.46300	29.62100	13:45:00	D	9.60
37	KAITHAL	KAITHAL	S-NPP	76.69614	29.67077	13:24:00	D	3.40
38	KAITHAL	KAITHAL	AQUA	76.69400	29.67600	13:45:00	D	12.30
39	KAITHAL	KAITHAL	S-NPP	76.35680	29.69916	13:24:00	D	4.70
40	KAITHAL	KAITHAL	S-NPP	76.44372	29.74255	13:24:00	D	5.30
41	KAITHAL	KAITHAL	AQUA	76.62500	29.75200	13:45:00	D	6.00
42	KAITHAL	KAITHAL	S-NPP	76.37093	29.75491	13:24:00	D	1.90
43	KAITHAL	KAITHAL	S-NPP	76.44758	29.76369	13:24:00	D	2.40
44	KAITHAL	KAITHAL	S-NPP	76.35007	29.77557	13:24:00	D	1.50
45	KAITHAL	KAITHAL	S-NPP	76.57316	29.79381	13:24:00	D	2.90
46	KAITHAL	KAITHAL	S-NPP	76.58568	29.81286	13:24:00	D	3.80
47	KAITHAL	KAITHAL	S-NPP	76.51437	29.83921	13:24:00	D	4.20
48	KAITHAL	KAITHAL	S-NPP	76.56757	29.84074	13:24:00	D	3.30
49	KAITHAL	KAITHAL	S-NPP	76.35735	29.86156	13:24:00	D	10.30
50	KAITHAL	KAITHAL	S-NPP	76.26096	29.86675	13:24:00	D	1.40
51	KAITHAL	KAITHAL	S-NPP	76.68098	29.86874	13:24:00	D	4.90
52	KAITHAL	KAITHAL	S-NPP	76.36398	29.86946	13:24:00	D	3.50
53	KAITHAL	KAITHAL	S-NPP	76.51598	29.87305	13:24:00	D	5.20
54	KAITHAL	KAITHAL	S-NPP	76.56449	29.87731	13:24:00	D	2.80
55	KAITHAL	KAITHAL	AQUA	76.27600	29.89100	13:45:00	D	21.30
56	KAITHAL	KAITHAL	S-NPP	76.27216	29.89253	13:24:00	D	5.90
57	KAITHAL	KAITHAL	S-NPP	76.64471	29.90699	13:24:00	D	2.40
58	KAITHAL	KAITHAL	AQUA	76.36600	29.91000	13:45:00	D	4.20
59	KAITHAL	KAITHAL	S-NPP	76.64404	29.91030	13:24:00	D	2.40
60	KARNAL	ASSANDH	S-NPP	76.60738	29.50134	13:24:00	D	12.00
61	KARNAL	ASSANDH	S-NPP	76.79797	29.51077	13:24:00	D	5.60
62	KARNAL	ASSANDH	S-NPP	76.55511	29.53638	13:24:00	D	22.60
63	KARNAL	ASSANDH	S-NPP	76.57092	29.55939	13:24:00	D	2.40
64	KARNAL	ASSANDH	S-NPP	76.56615	29.58256	13:24:00	D	2.50

65	KARNAL	ASSANDH	S-NPP	76.62185	29.59135	13:24:00	D	2.50
66	KARNAL	ASSANDH	AQUA	76.72500	29.59900	13:45:00	D	25.70
67	KARNAL	ASSANDH	AQUA	76.79100	29.60700	13:45:00	D	10.80
68	KARNAL	GHARAUNDA	S-NPP	77.03133	29.50620	13:24:00	D	2.70
69	KARNAL	GHARAUNDA	S-NPP	77.05634	29.52368	13:24:00	D	4.50
70	KARNAL	GHARAUNDA	S-NPP	76.94902	29.53089	13:24:00	D	4.00
71	KARNAL	GHARAUNDA	S-NPP	77.04249	29.53175	13:24:00	D	2.70
72	KARNAL	GHARAUNDA	S-NPP	77.00684	29.56708	13:24:00	D	2.90
73	KARNAL	INDRI	AQUA	77.09400	29.86700	13:45:00	D	5.20
74	KARNAL	INDRI	S-NPP	77.13918	29.86815	13:24:00	D	4.00
75	KARNAL	INDRI	S-NPP	77.10947	29.87380	13:24:00	D	3.10
76	KARNAL	INDRI	S-NPP	77.10877	29.91789	13:24:00	D	1.30
77	KARNAL	INDRI	S-NPP	77.17712	29.96556	13:24:00	D	2.10
78	KARNAL	KARNAL	S-NPP	76.81050	29.59026	13:24:00	D	5.00
79	KARNAL	KARNAL	S-NPP	76.79652	29.61875	13:24:00	D	3.80
80	KARNAL	KARNAL	S-NPP	76.79585	29.62206	13:24:00	D	3.80
81	KARNAL	KARNAL	S-NPP	76.90481	29.62880	13:24:00	D	2.40
82	KARNAL	KARNAL	S-NPP	77.03069	29.63128	13:24:00	D	1.20
83	KARNAL	KARNAL	S-NPP	76.77333	29.63217	13:24:00	D	12.40
84	KARNAL	KARNAL	S-NPP	76.99310	29.63568	13:24:00	D	2.00
85	KARNAL	KARNAL	S-NPP	76.84534	29.63999	13:24:00	D	10.80
86	KARNAL	KARNAL	S-NPP	76.76733	29.64146	13:24:00	D	3.40
87	KARNAL	KARNAL	S-NPP	76.78716	29.64456	13:24:00	D	8.50
88	KARNAL	KARNAL	S-NPP	76.79113	29.64518	13:24:00	D	8.50
89	KARNAL	KARNAL	S-NPP	76.79906	29.64641	13:24:00	D	6.50
90	KARNAL	KARNAL	S-NPP	76.84333	29.64989	13:24:00	D	4.40
91	KARNAL	KARNAL	S-NPP	76.93708	29.65084	13:24:00	D	1.70
92	KARNAL	KARNAL	S-NPP	76.75932	29.66067	13:24:00	D	1.40
93	KARNAL	KARNAL	S-NPP	76.78380	29.66107	13:24:00	D	2.00
94	KARNAL	KARNAL	S-NPP	76.79434	29.66953	13:24:00	D	4.40
95	KARNAL	KARNAL	S-NPP	77.10838	29.69088	13:24:00	D	1.80
96	KARNAL	KARNAL	AQUA	76.83800	29.70400	13:45:00	D	8.90
97	KARNAL	KARNAL	S-NPP	76.69731	29.70506	13:24:00	D	3.20
98	KARNAL	KARNAL	S-NPP	76.84023	29.70696	13:24:00	D	3.70

99	KARNAL	KARNAL	S-NPP	76.74100	29.71191	13:24:00	D	6.80
100	KARNAL	KARNAL	S-NPP	76.70914	29.72738	13:24:00	D	2.80
101	KARNAL	NILOKHERI	S-NPP	76.96220	29.74973	13:24:00	D	4.30
102	KARNAL	NILOKHERI	S-NPP	76.95099	29.78543	13:24:00	D	2.30
103	KARNAL	NILOKHERI	S-NPP	76.85649	29.78782	13:24:00	D	4.90
104	KARNAL	NILOKHERI	S-NPP	76.81905	29.79487	13:24:00	D	1.70
105	KARNAL	NILOKHERI	S-NPP	76.76140	29.81653	13:24:00	D	2.30
106	KURUKSHETRA	PEHOWA	S-NPP	76.61539	29.92968	13:24:00	D	2.90
107	KURUKSHETRA	PEHOWA	S-NPP	76.60139	29.93773	13:24:00	D	3.50
108	KURUKSHETRA	PEHOWA	S-NPP	76.67306	29.94895	13:24:00	D	1.00
109	KURUKSHETRA	PEHOWA	S-NPP	76.68023	29.97393	13:24:00	D	4.20
110	KURUKSHETRA	PEHOWA	S-NPP	76.55485	29.98411	13:24:00	D	4.20
111	KURUKSHETRA	PEHOWA	S-NPP	76.53536	30.01859	13:24:00	D	2.80
112	KURUKSHETRA	PEHOWA	AQUA	76.58200	30.05800	13:45:00	D	4.60
113	KURUKSHETRA	PEHOWA	S-NPP	76.62049	30.08610	13:24:00	D	3.30
114	KURUKSHETRA	PEHOWA	S-NPP	76.74526	30.09881	13:24:00	D	9.10
115	KURUKSHETRA	PEHOWA	S-NPP	76.70267	30.12623	13:24:00	D	1.90
116	KURUKSHETRA	PEHOWA	S-NPP	76.73502	30.16874	13:24:00	D	1.10
117	KURUKSHETRA	PEHOWA	S-NPP	76.73434	30.17204	13:24:00	D	2.40
118	KURUKSHETRA	SHAHABAD	S-NPP	76.84055	30.15446	13:24:00	D	2.60
119	KURUKSHETRA	SHAHABAD	S-NPP	76.90008	30.16366	13:24:00	D	2.40
120	KURUKSHETRA	SHAHABAD	AQUA	76.80800	30.16900	13:45:00	D	8.70
121	KURUKSHETRA	SHAHABAD	S-NPP	76.78413	30.16955	13:24:00	D	2.60
122	KURUKSHETRA	SHAHABAD	S-NPP	76.82785	30.24033	13:24:00	D	3.70
123	KURUKSHETRA	THANESAR	AQUA	76.76000	29.88700	13:45:00	D	16.40
124	KURUKSHETRA	THANESAR	AQUA	76.77100	29.88900	13:45:00	D	8.80
125	KURUKSHETRA	THANESAR	S-NPP	76.86040	29.89324	13:24:00	D	4.90
126	KURUKSHETRA	THANESAR	AQUA	76.73600	29.89400	13:45:00	D	7.60
127	KURUKSHETRA	THANESAR	S-NPP	76.86768	29.89777	13:24:00	D	1.40
128	KURUKSHETRA	THANESAR	S-NPP	76.92670	29.93049	13:24:00	D	5.70
129	KURUKSHETRA	THANESAR	S-NPP	76.93592	29.94553	13:24:00	D	2.90
130	KURUKSHETRA	THANESAR	S-NPP	76.79240	29.94711	13:24:00	D	5.10
131	KURUKSHETRA	THANESAR	S-NPP	76.77837	29.97558	13:24:00	D	2.20
132	KURUKSHETRA	THANESAR	S-NPP	77.02180	29.98598	13:24:00	D	2.20

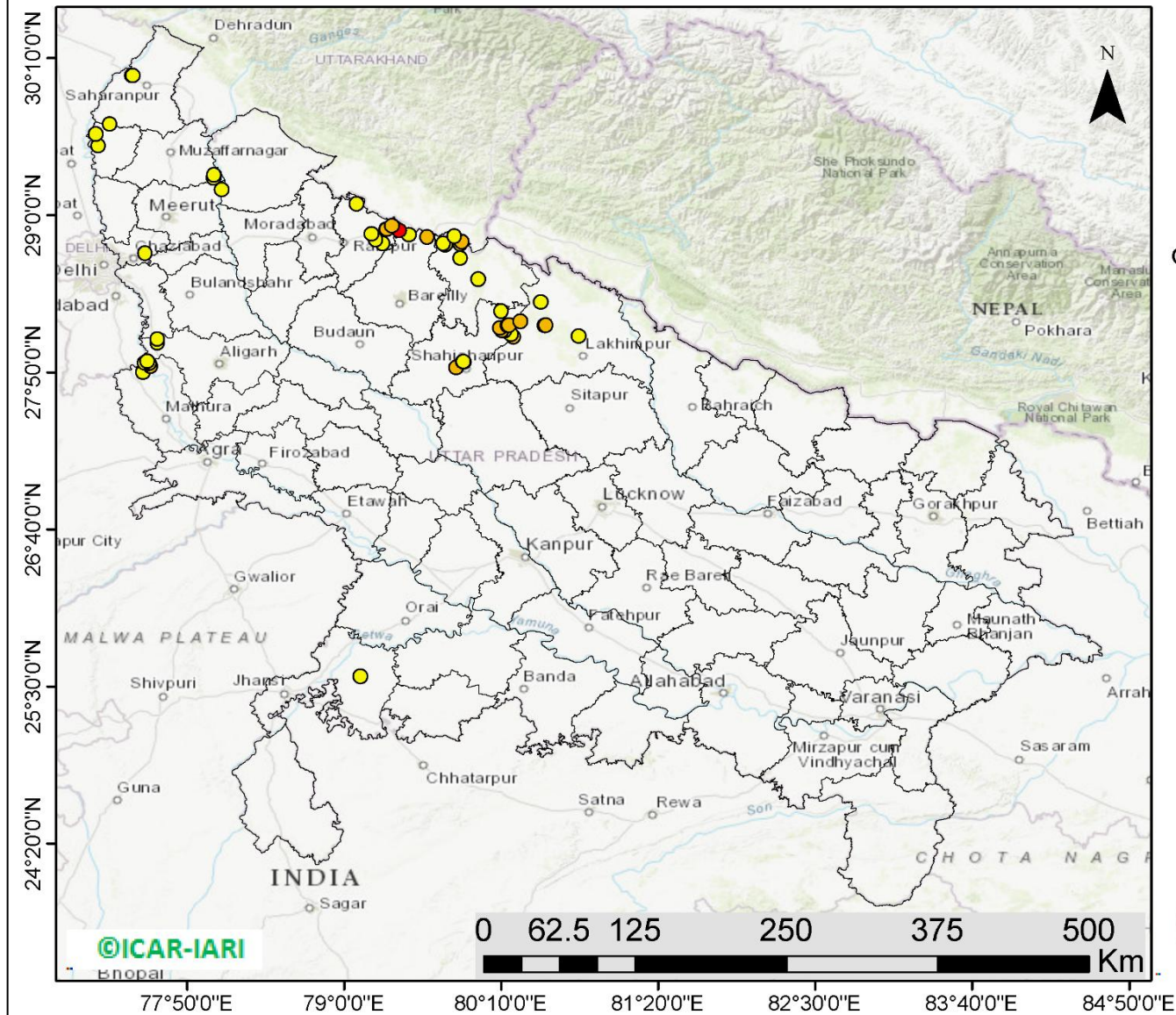
133	KURUKSHETRA	THANESAR	S-NPP	76.89153	30.00332	13:24:00	D	4.00
134	KURUKSHETRA	THANESAR	S-NPP	76.91276	30.01954	13:24:00	D	4.20
135	KURUKSHETRA	THANESAR	AQUA	76.83200	30.03600	13:45:00	D	6.40
136	KURUKSHETRA	THANESAR	S-NPP	76.87566	30.06146	13:24:00	D	5.30
137	KURUKSHETRA	THANESAR	S-NPP	77.03771	30.06942	13:24:00	D	5.50
138	KURUKSHETRA	THANESAR	S-NPP	76.77557	30.06977	13:24:00	D	5.30
139	KURUKSHETRA	THANESAR	S-NPP	76.87890	30.08578	13:24:00	D	3.10
140	KURUKSHETRA	THANESAR	AQUA	76.75800	30.09900	13:45:00	D	5.40
141	KURUKSHETRA	THANESAR	AQUA	77.01200	30.11200	13:45:00	D	12.40
142	KURUKSHETRA	THANESAR	S-NPP	77.01643	30.13417	13:24:00	D	2.60
143	PALWAL	PALWAL	AQUA	77.47000	28.04100	13:45:00	D	8.90
144	SIRSA	SIRSA	S-NPP	75.16383	29.69017	13:24:00	D	18.10
145	SIRSA	SIRSA	S-NPP	75.08622	29.78570	13:24:00	D	5.50
146	SIRSA	SIRSA	S-NPP	75.09046	29.78641	13:24:00	D	2.80
147	SIRSA	SIRSA	S-NPP	75.08547	29.78910	13:24:00	D	3.90
148	SIRSA	SIRSA	S-NPP	75.08971	29.78982	13:24:00	D	6.10
149	YAMUNANAGAR	CHHACHHRAULII	S-NPP	77.44857	30.26745	13:24:00	D	2.60
150	YAMUNANAGAR	JAGADHRI	S-NPP	77.17844	29.99976	13:24:00	D	4.90
151	YAMUNANAGAR	JAGADHRI	S-NPP	77.08468	30.05961	13:24:00	D	5.10
152	YAMUNANAGAR	JAGADHRI	S-NPP	77.16467	30.12962	13:24:00	D	3.70
153	YAMUNANAGAR	JAGADHRI	S-NPP	77.11132	30.19267	13:24:00	D	1.60
154	YAMUNANAGAR	JAGADHRI	S-NPP	77.16031	30.19334	13:24:00	D	2.00
155	YAMUNANAGAR	JAGADHRI	S-NPP	77.17687	30.21285	13:24:00	D	2.60
156	YAMUNANAGAR	JAGADHRI	S-NPP	77.17621	30.21615	13:24:00	D	2.60
157	YAMUNANAGAR	JAGADHRI	S-NPP	77.19211	30.25936	13:24:00	D	3.70

District-wise cumulative number of residue burning events in Haryana (01 to 10-Oct 2019)



(c) UP

RICE RESIDUE BURNING IN UTTAR PRADESH



53 burning events detected in Uttar Pradesh on 10th October 2019

Fire Intensity (W/m²)

- 0 - 5
- 6 - 10
- 11 - 15
- 16 - 20
- >20



<http://geoportal.icar.gov.in:8080/geoexplorer/composer/>

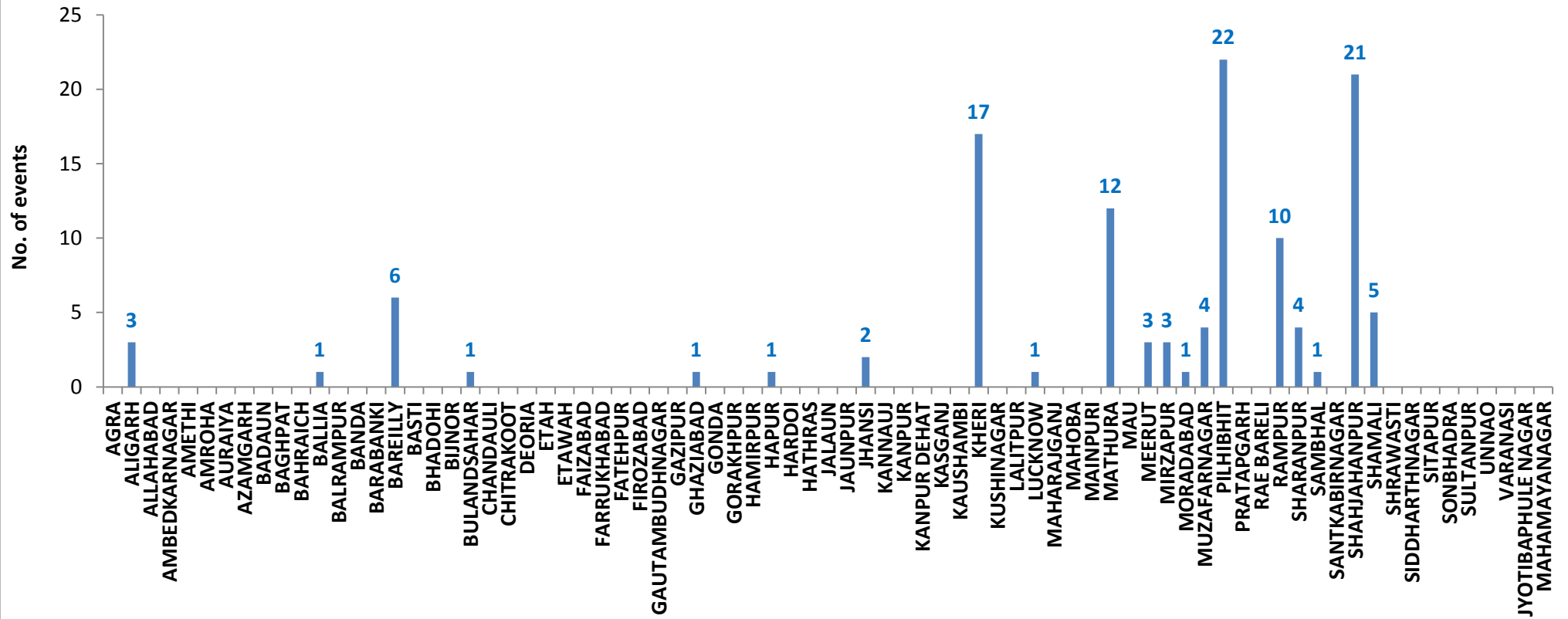
Details of residue burning events in Uttar Pradesh on 10-Oct-2019

S. No.	District	Tehsil / Block	Satellite	Longitude	Latitude	Time (IST)	Day / Night	Fire Power (W/m2)
1	ALIGARH	KHAIR	S-NPP	77.61395	28.05167	13:24:00	D	2.40
2	ALIGARH	KHAIR	S-NPP	77.61290	28.07851	13:24:00	D	4.70
3	BAREILLY	BAHERI	S-NPP	79.61714	28.83817	13:24:00	D	8.10
4	BAREILLY	BAHERI	S-NPP	79.48166	28.85442	13:24:00	D	3.40
5	BAREILLY	BAHERI	S-NPP	79.40849	28.88593	13:24:00	D	31.70
6	GHAZIABAD	GHAZIABAD	S-NPP	77.52167	28.71796	13:24:00	D	2.80
7	JHANSI	TAHRAULI	S-NPP	79.12155	25.57524	13:24:00	D	2.10
8	KHERI	GOLA	S-NPP	80.48995	28.17925	13:24:00	D	5.60
9	KHERI	GOLA	S-NPP	80.49816	28.18390	13:24:00	D	8.10
10	KHERI	GOLA	S-NPP	80.31062	28.21246	13:24:00	D	7.60
11	KHERI	LAKHIMPUR	S-NPP	80.74187	28.10093	13:24:00	D	2.30
12	KHERI	MOHMADI	S-NPP	80.25922	28.09439	13:24:00	D	8.50
13	KHERI	PALIA KALAN	S-NPP	80.46184	28.35494	13:24:00	D	4.20
14	MATHURA	CHHATA	S-NPP	77.50389	27.83140	13:24:00	D	2.20
15	MATHURA	CHHATA	S-NPP	77.51827	27.90163	13:24:00	D	2.50
16	MATHURA	MAT	S-NPP	77.56294	27.87790	13:24:00	D	6.50
17	MATHURA	MAT	AQUA	77.54100	27.89500	13:45:00	D	9.40
18	MATHURA	MAT	S-NPP	77.55067	27.89981	13:24:00	D	2.80
19	MATHURA	MAT	S-NPP	77.53581	27.91453	13:24:00	D	1.80
20	MEERUT	MAWANA	S-NPP	78.09143	29.18905	13:24:00	D	4.30
21	MUZAFARNAGAR	JANSATH	S-NPP	78.02993	29.27814	13:24:00	D	3.30
22	MUZAFARNAGAR	JANSATH	S-NPP	78.03407	29.29917	13:24:00	D	2.20
23	PILHIBHIT	PILHIBHIT	S-NPP	79.86279	28.68048	13:24:00	D	2.20
24	PILHIBHIT	PILHIBHIT	S-NPP	79.75078	28.77987	13:24:00	D	3.40
25	PILHIBHIT	PILHIBHIT	S-NPP	79.75440	28.78387	13:24:00	D	3.40
26	PILHIBHIT	PILHIBHIT	S-NPP	79.86217	28.78802	13:24:00	D	3.70
27	PILHIBHIT	PILHIBHIT	S-NPP	79.73573	28.79183	13:24:00	D	3.90
28	PILHIBHIT	PILHIBHIT	S-NPP	79.87257	28.80350	13:24:00	D	5.40
29	PILHIBHIT	PILHIBHIT	S-NPP	79.81917	28.84451	13:24:00	D	3.20
30	PILHIBHIT	PURANPUR	S-NPP	79.99780	28.52383	13:24:00	D	1.90

31	RAMPUR	BILASPUR	S-NPP	79.28571	28.78907	13:24:00	D	2.30
32	RAMPUR	BILASPUR	S-NPP	79.23395	28.81991	13:24:00	D	3.00
33	RAMPUR	BILASPUR	S-NPP	79.20176	28.86089	13:24:00	D	2.60
34	RAMPUR	BILASPUR	S-NPP	79.31388	28.89372	13:24:00	D	5.20
35	RAMPUR	BILASPUR	S-NPP	79.31799	28.89429	13:24:00	D	5.20
36	RAMPUR	BILASPUR	S-NPP	79.35570	28.92033	13:24:00	D	5.70
37	RAMPUR	SUAR	S-NPP	79.09087	29.08558	13:24:00	D	2.00
38	SHAHJAHANPUR	PUWANYA	S-NPP	80.23897	28.11429	13:24:00	D	1.60
39	SHAHJAHANPUR	PUWANYA	S-NPP	80.19080	28.13974	13:24:00	D	1.60
40	SHAHJAHANPUR	PUWANYA	S-NPP	80.17307	28.14091	13:24:00	D	7.00
41	SHAHJAHANPUR	PUWANYA	S-NPP	80.15673	28.15992	13:24:00	D	5.40
42	SHAHJAHANPUR	PUWANYA	S-NPP	80.21437	28.18180	13:24:00	D	3.90
43	SHAHJAHANPUR	PUWANYA	S-NPP	80.22296	28.18296	13:24:00	D	5.90
44	SHAHJAHANPUR	PUWANYA	S-NPP	80.16679	28.28695	13:24:00	D	2.90
45	SHAHJAHANPUR	SHAHJAHANPUR	S-NPP	79.83060	27.86855	13:24:00	D	5.90
46	SHAHJAHANPUR	SHAHJAHANPUR	S-NPP	79.88769	27.90778	13:24:00	D	5.00
47	SHAHJAHANPUR	SHAHJAHANPUR	S-NPP	79.88293	27.91063	13:24:00	D	5.40
48	SHAHJAHANPUR	SHAHJAHANPUR	S-NPP	79.88710	27.91120	13:24:00	D	5.00
49	SHAMLI	KAIRANA	S-NPP	77.17219	29.51431	13:24:00	D	3.40
50	SHAMLI	KAIRANA	S-NPP	77.15437	29.60339	13:24:00	D	2.80
51	SHARANPUR	NAKUR	S-NPP	77.25797	29.67637	13:24:00	D	2.50
52	SHARANPUR	SHARANPUR	S-NPP	77.42438	30.03701	13:24:00	D	2.70
53	SHARANPUR	SHARANPUR	S-NPP	77.42836	30.03761	13:24:00	D	2.70

District-wise cumulative number of residue burning events in Haryana (01 to 10-Oct 2019)

Uttar Pradesh (01 - 10 Oct 2019)



State-wise, date-wise and district-wise number of residue burning events detected in 2016, 2017, 2018 and 2019
(Period: 01-Oct to 10-Oct)

Date	Punjab				Haryana				UP				Total			
	2019	2018	2017	2016	2019	2018	2017	2016	2019	2018	2017	2016	2019	2018	2017	2016
01-Oct	3	16	54	109	1	9	13	46	1	11	2	23	5	36	69	178
02-Oct	20	9	50	51	2	23	27	16	0	21	8	20	23	53	85	87
03-Oct	37	4	62	66	16	9	40	16	3	12	17	16	56	25	119	98
04-Oct	3	32	103	37	30	16	60	7	4	5	22	15	37	53	185	59
05-Oct	16	56	106	95	37	30	68	15	11	10	20	14	64	96	194	124
06-Oct	0	87	138	152	22	63	75	105	8	13	39	6	30	163	252	263
07-Oct	27	162	105	171	16	180	97	126	4	69	33	24	47	411	235	321
08-Oct	59	39	215	166	69	40	218	94	18	54	76	14	146	133	509	274
09-Oct	93	75	163	270	70	47	148	121	17	32	88	22	180	154	399	413
10-Oct	172	23	164	597	157	37	151	242	53	21	126	74	382	81	441	913
Total	430	503	1160	1714	420	454	897	788	119	248	431	228	969	1205	2488	2730

(a) Punjab

Districts	01-10 Oct			
	2016	2017	2018	2019
AMRITSAR	411	312	280	180
BARNALA	6	1	1	0
BATHINDA	55	35	12	1
FARIDKOT	76	112	0	4
FATEHGARH SAHIB	101	34	9	2
FAZILKA	0	0	0	4
FIROZPUR	116	93	16	13
GURDASPUR	66	25	26	13
HOSHIARPUR	13	4	3	5
JALANDHAR	106	46	0	12
KAPURTHALA	90	13	2	9
LUDHIANA	74	81	17	6
MANSA	9	14	1	10
MOGA	13	8	0	6
MUKTSAR	87	11	2	2
NAWASHAHR (SBS Nagar)	24	15	4	5
PATHANKOT	0	0	0	0
PATIALA	138	124	33	45
RUPNAGAR	11	2	0	0
SANGRUR	28	57	19	18
SAS NAGAR	16	20	16	3
TARN TARAN	274	153	62	92
Total	1714	1160	503	430

(b) Haryana

Districts	01-10 Oct			
	2016	2017	2018	2019
AMBALA	44	71	35	12
BHIWANI	0	2	0	0
FARIDABAD	3	8	17	1
FATEHABAD	15	36	8	24
GURUGRAM	0	0	0	0
HISAR	4	6	6	5
JHAJJAR	1	0	3	1
JIND	17	39	20	14
KAITHAL	217	155	70	83
KARNAL	290	312	116	151
KURUKSHETRA	162	211	126	99
MAHENDRAGARH	0	0	0	1
MEWAT	0	0	0	0
PALWAL	0	0	0	3
PANCHKULA	0	0	3	4
PANIPAT	8	17	21	1
REWARI	0	0	0	0
ROHTAK	0	1	0	0
SIRSA	17	6	6	5
SONIPAT	0	7	4	0
YAMUNANAGAR	10	26	19	16
Total	788	897	454	420

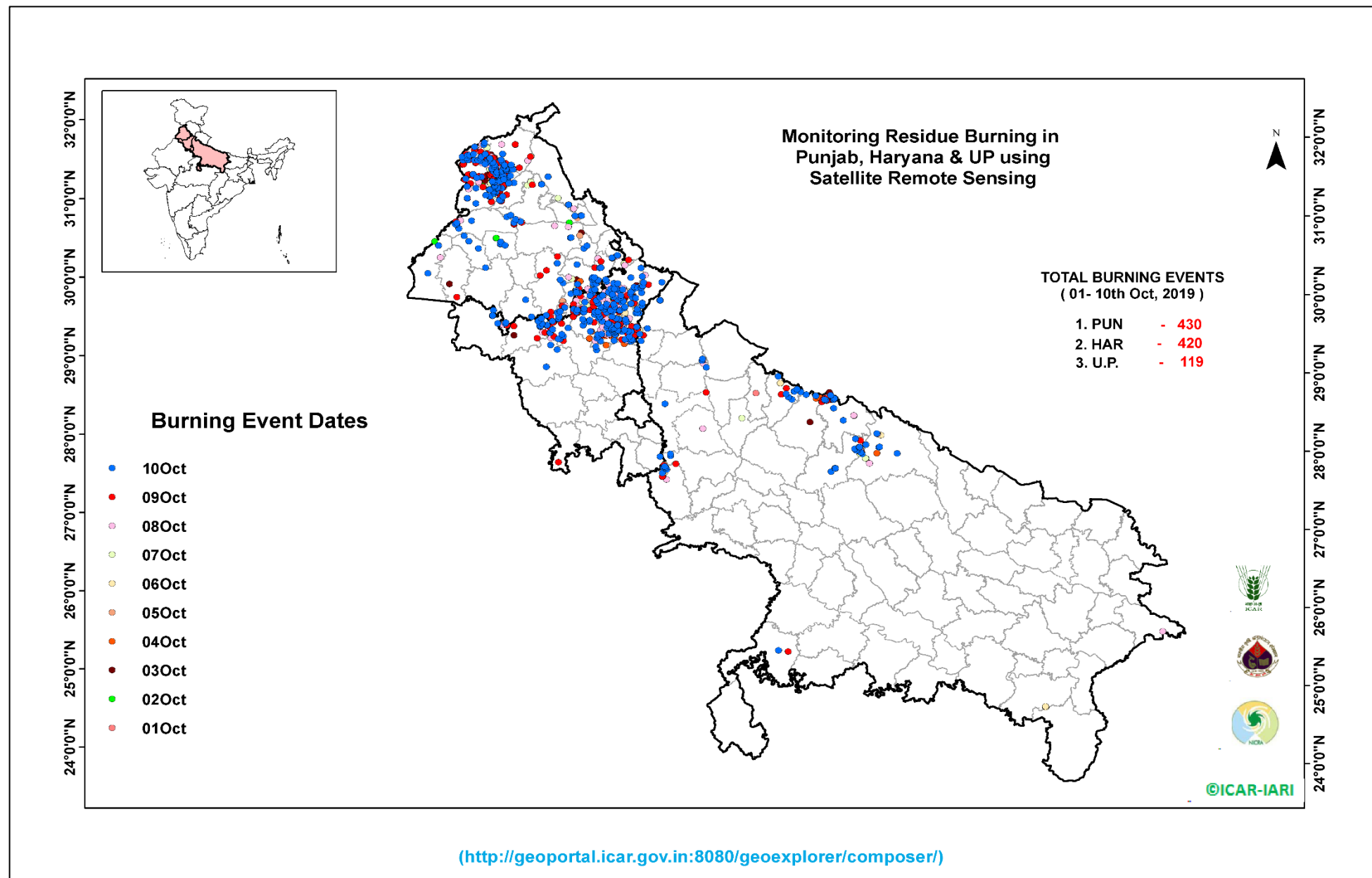
(c) Uttar Pradesh

Districts	01-10 Oct			
	2016	2017	2018	2019
AGRA	0	0	0	0
ALIGARH	0	8	6	3
ALLAHABAD	0	0	3	0
AMBEDKARNAGAR	0	0	0	0
AMETHI	0	0	0	0
AMROHA	0	0	0	0
AURAIYA	28	25	14	0
AZAMGARH	0	0	0	0
BADAUN	0	0	0	0
BAGHPAT	0	0	0	0
BAHRAICH	0	0	2	0
BALLIA	0	0	0	1
BALRAMPUR	0	0	0	0
BANDA	0	0	1	0
BARABANKI	2	11	18	0
BAREILLY	13	8	4	6
BASTI	0	0	0	0
BHADOHI	0	0	0	0
BIJNOR	0	0	1	0
BULANDSAHAR	0	2	2	1
CHANDAULI	0	0	0	0
CHITRAKOOT	0	0	0	0
DEORIA	0	0	0	0
ETAH	0	1	2	0
ETAWAH	0	2	0	0
FAIZABAD	0	1	0	0
FARRUKHABAD	0	0	0	0
FATEHPUR	0	2	2	0
FIROZABAD	0	0	0	0

GAUTAMBUDHNAGAR	1	0	1	0
GAZIPUR	0	0	0	0
GHAZIABAD	0	1	2	1
GONDA	0	0	0	0
GORAKHPUR	0	0	3	0
HAMIRPUR	0	0	1	0
HAPUR	0	0	0	1
HARDOI	0	1	2	0
HATHRAS	0	0	0	0
JALAUN	0	0	0	0
JAUNPUR	0	0	2	0
JHANSI	0	0	0	2
KANNAUJ	0	0	1	0
KANPUR	0	0	0	0
KANPUR DEHAT	0	1	0	0
KASGANJ	0	0	0	0
KAUSHAMBI	0	2	6	0
KHERI	10	48	17	17
KUSHINAGAR	0	0	0	0
LALITPUR	0	0	0	0
LUCKNOW	2	4	0	1
MAHARAJGANJ	0	0	1	0
MAHOPA	0	0	0	0
MAINPURI	0	2	2	0
MATHURA	5	9	23	12
MAU	0	0	0	0
MEERUT	1	2	0	3
MIRZAPUR	0	1	1	3
MORADABAD	1	2	1	1
MUZAFARNAGAR	5	26	4	4
PILHIBHIT	24	61	23	22
PRATAPGARH	0	0	0	0

RAE BARELI	0	0	0	0
RAMPUR	66	55	31	10
SHARANPUR	3	5	4	4
SAMBHAL	0	0	0	1
SANTKABIRNAGAR	0	0	0	0
SHAHJAHANPUR	61	148	64	21
SHAMALI	0	0	0	5
SHRAWASTI	0	0	0	0
SIDDHARTHANAGAR	0	0	0	0
SITAPUR	3	2	1	0
SONBHADRA	3	1	3	0
SULTANPUR	0	0	0	0
UNNAO	0	0	0	0
VARANASI	0	0	0	0
JYOTIBAPHULE NAGAR	0	0	0	0
MAHAMAYANAGAR	0	0	0	0
Total	228	431	248	119

Map of Cummulative Burning Events (1 – 10 Oct 2019)



The study used images received from following Satellites at IARI Satellite Ground Station

S. No.	Satellite Name	Sensor	Resolution (meter)	Day / Night Passes
1.	Suomi NPP	VIIRS	375 / 1000	Both
2.	Terra	MODIS	1000	Both
3.	Aqua	MODIS	1000	Both
4.	NOAA – 18	AVHRR	1000	Night
5.	NOAA – 19	AVHRR	1000	Night
6.	Metop - 1	AVHRR	1000	Night
7.	Metop - 2	AVHRR	1000	Night

Study Team

ICAR – HQ	Dr K. Alagusundaram	DDG (AG. ENGG.)	ddgengg@icar.org.in
	Dr S. Bhasker	ADG (NRM)	adgagroandaf@gmail.com
	Dr K.K. Singh	ADG (AG. ENGG)	kanchansingh044@gmail.com
ICAR - IARI	Dr V.K. Sehgal	Professor & Nodal Scientist	iaricreams@gmail.com
	Dr Rajkumar Dhakar	Scientist	raidhakar.iari@gmail.com
	Mr Rakeswer Verma	Chief Technical Officer	rakeshwar.verma@icar.gov.in
	Mr Mohd Jahangir	Lab Assistant (KRISHI)	mjahangir198@gmail.com
ICAR - ATARI	Dr Rajbir Singh	Director ATARI (Zone-I) Ludhiana	rajbirsingh.zpd@gmail.com
	Dr S.K. Singh	Director ATARI (Zone-II) Jodhpur	sushilsinghiipr@yahoo.co.in
	Dr Atar Singh	Director ATARI (Zone-III) Kanpur	zpdicarkanpur@gmail.com
ICAR - IASRI	Dr Rajender Parsad	Principal Scientist	rajender.parsad@icar.gov.in

GIS Maps of fire events can be visualized online on ICAR KRISHI Geoportal website: <http://geoportal.icar.gov.in:8080/geoexplorer/composer/>
(Part of KRISHI Portal: <https://krishi.icar.gov.in> initiative)
