



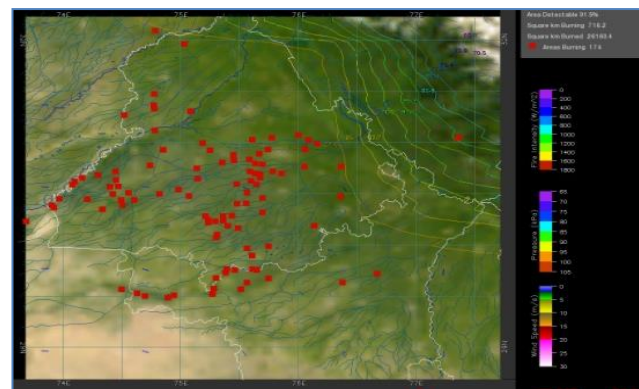
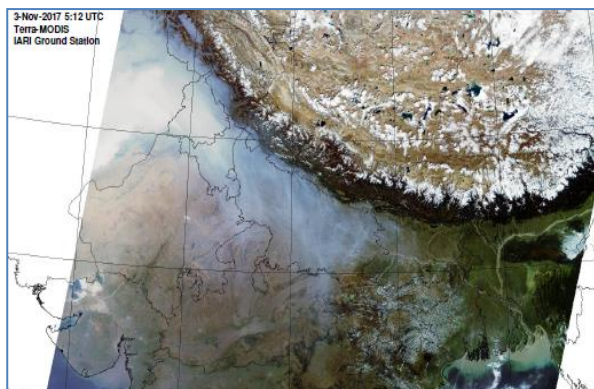
**Bulletin  
No. 17**

**Events Date:  
17-Oct-2018**

**Issued on:  
18-Oct-2018**



# **MONITORING PADDY RESIDUE BURNING IN NORTH INDIA USING SATELLITE REMOTE SENSING DURING 2018**



**Prepared by:**

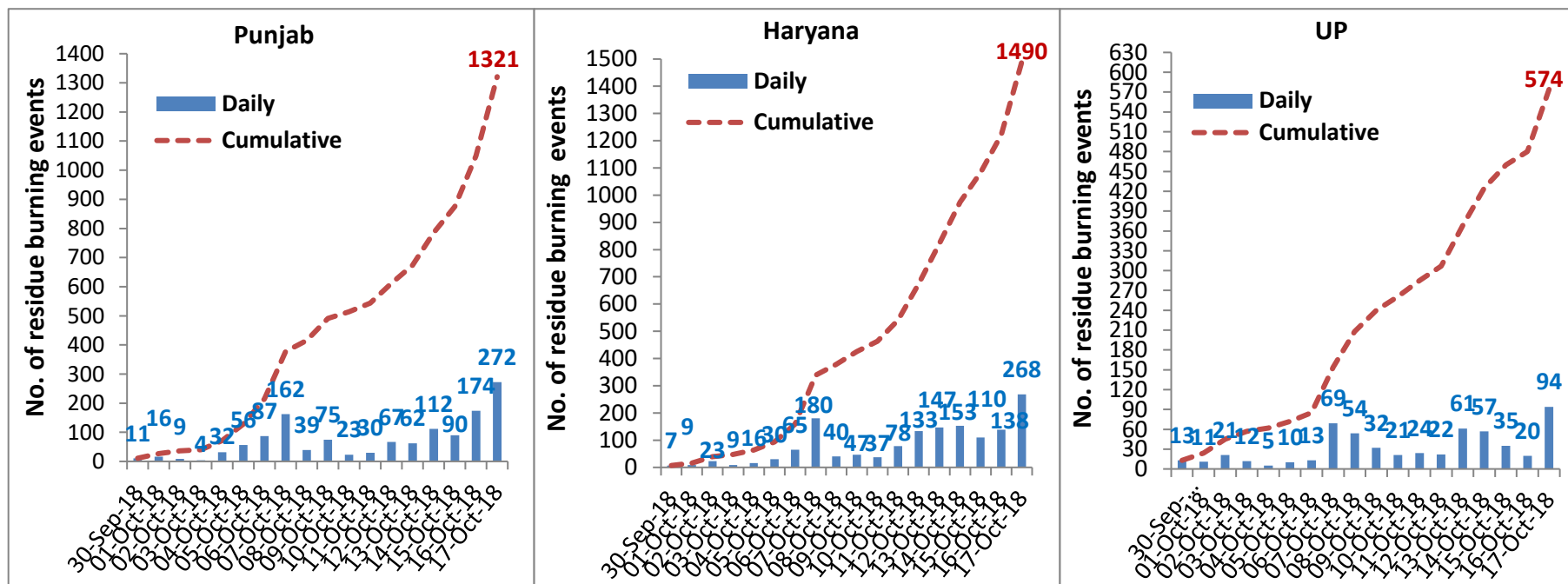
**Consortium for Research on Agroecosystem Monitoring and Modeling from Space (CREAMS) Laboratory,  
Division of Agricultural Physics, ICAR – Indian Agricultural Research Institute, New Delhi – 110012**

**<http://creams.iari.res.in>**

## Highlights for 17-October-2018

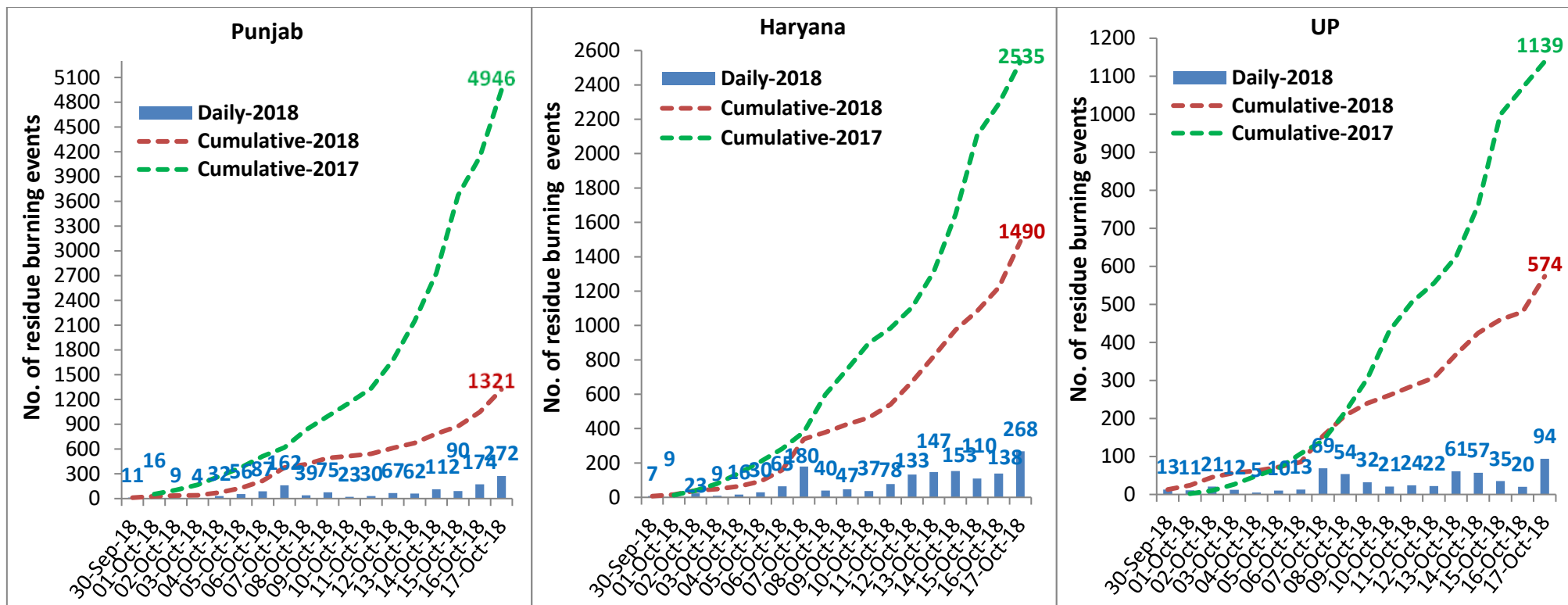
- Satellites detected 634 residue burning events in the three States (Punjab, Haryana & UP) on 16-Oct-2018.
- The burning events detected on 17-Oct-2018 are 272, 268 and 94 in Punjab, Haryana, and UP, respectively.
- The number of events increased from 332 on 16-Oct-2018 to 634 on 17-Oct-2018 in the three States.
- Total 3385 burning events were detected in the three States between 30-Sept-2018 and 17-Oct-2018, which were distributed as 1321, 1490 and 574 in Punjab, Haryana and UP, respectively.
- Till 17-Oct-2018, the burning events in the current year are about 39.2% of the events detected in 2017.

Temporal distribution of residue burning events for the three study States

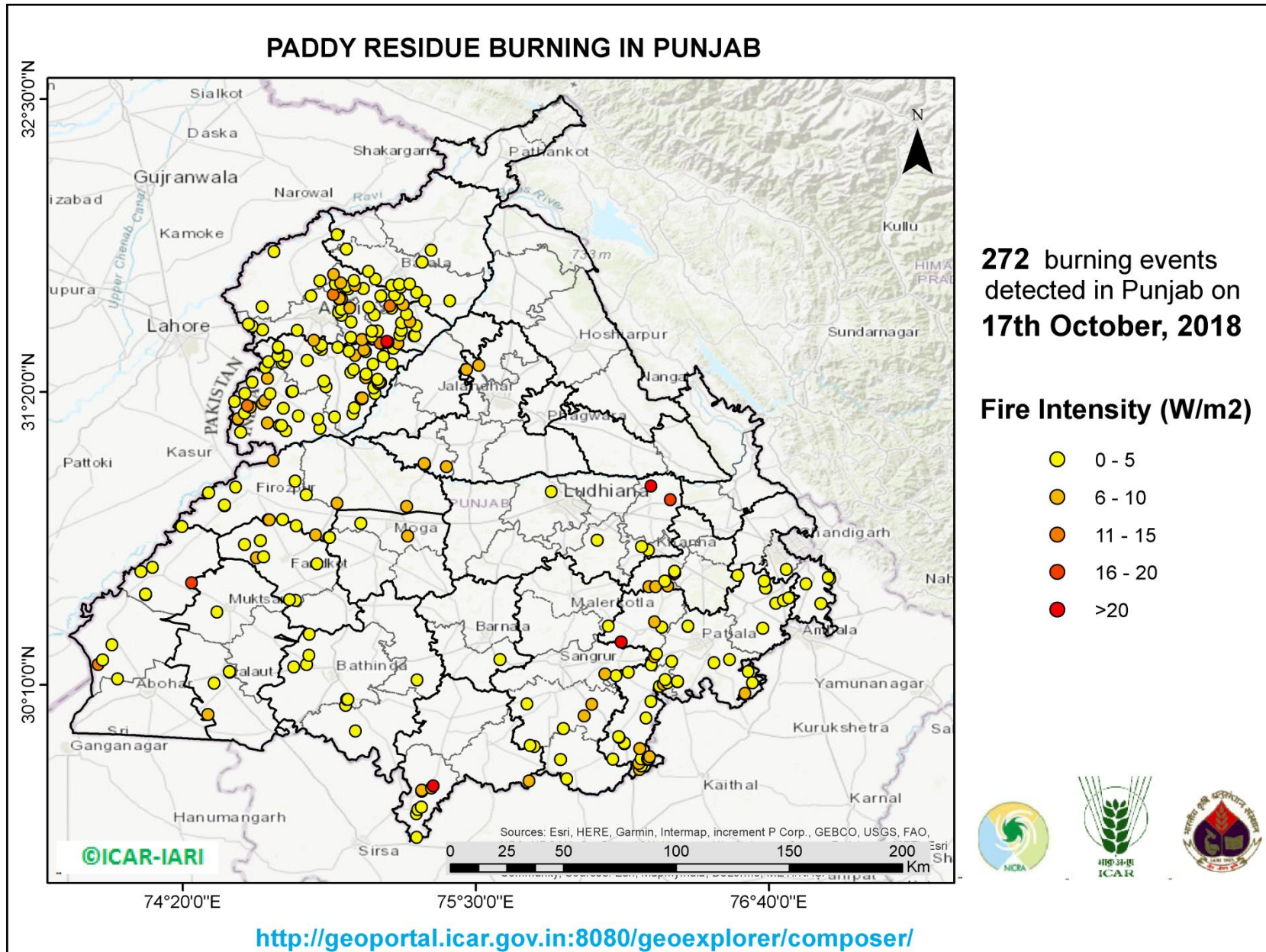


**Comparison of residue burning events in current year (2018) with previous year (2017) for the three study States**

**(30-Sep-2018 to 17-Oct-2018)**



(a) Punjab



### Details of residue burning events in Punjab on 17-Oct-2018

Event S. No.	District	Tehsil/Block	Satellite	Longitude	Latitude	Time (IST)	Day/Night	Fire Power (W/m <sup>2</sup> )
1	AMRITSAR	AJNALA	S-NPP	74.64797	31.67278	13:36:00	D	3.10
2	AMRITSAR	AJNALA	S-NPP	74.87835	31.77596	13:36:00	D	2.30
3	AMRITSAR	AJNALA	S-NPP	74.69555	31.89248	13:36:00	D	1.50
4	AMRITSAR	AJNALA	S-NPP	74.94715	31.96049	13:36:00	D	4.60
5	AMRITSAR	AMRITSAR I	S-NPP	74.94949	31.51155	13:36:00	D	2.60
6	AMRITSAR	AMRITSAR I	S-NPP	75.04578	31.54226	13:36:00	D	8.00
7	AMRITSAR	AMRITSAR I	S-NPP	75.00169	31.54982	13:36:00	D	2.90
8	AMRITSAR	AMRITSAR I	S-NPP	75.08608	31.55479	13:36:00	D	2.60
9	AMRITSAR	AMRITSAR I	S-NPP	75.10788	31.57506	13:36:00	D	4.90
10	AMRITSAR	AMRITSAR I	S-NPP	75.08641	31.57550	13:36:00	D	2.90
11	AMRITSAR	AMRITSAR I	S-NPP	75.00260	31.61184	13:36:00	D	3.00
12	AMRITSAR	AMRITSAR I	S-NPP	74.99686	31.66766	13:36:00	D	5.10
13	AMRITSAR	AMRITSAR I	S-NPP	75.07310	31.67148	13:36:00	D	4.40
14	AMRITSAR	AMRITSAR I	S-NPP	74.93144	31.72162	13:36:00	D	14.50
15	AMRITSAR	AMRITSAR I	S-NPP	74.98707	31.74316	13:36:00	D	2.10
16	AMRITSAR	AMRITSAR I	S-NPP	74.99123	31.74375	13:36:00	D	2.30
17	AMRITSAR	AMRITSAR I	S-NPP	75.05088	31.74520	13:36:00	D	2.40
18	AMRITSAR	AMRITSAR I	S-NPP	74.97681	31.75205	13:36:00	D	1.20
19	AMRITSAR	AMRITSAR I	S-NPP	74.98514	31.75321	13:36:00	D	2.70
20	AMRITSAR	AMRITSAR I	S-NPP	75.01847	31.75789	13:36:00	D	5.40
21	AMRITSAR	AMRITSAR I	S-NPP	74.94032	31.76410	13:36:00	D	3.20
22	AMRITSAR	AMRITSAR I	S-NPP	74.96111	31.76703	13:36:00	D	9.50
23	AMRITSAR	AMRITSAR I	S-NPP	75.01462	31.77799	13:36:00	D	4.30
24	AMRITSAR	AMRITSAR I	S-NPP	75.09946	31.78298	13:36:00	D	4.70
25	AMRITSAR	AMRITSAR I	S-NPP	74.93324	31.80092	13:36:00	D	5.50
26	AMRITSAR	AMRITSAR II	S-NPP	74.85506	31.53937	13:36:00	D	7.10
27	AMRITSAR	AMRITSAR II	S-NPP	74.78835	31.57783	13:36:00	D	2.50
28	AMRITSAR	AMRITSAR II	S-NPP	74.64913	31.58058	13:36:00	D	2.30

29	AMRITSAR	AMRITSAR II	S-NPP	74.60836	31.59525	13:36:00	D	2.50
30	AMRITSAR	AMRITSAR II	S-NPP	74.59412	31.60345	13:36:00	D	4.10
31	AMRITSAR	AMRITSAR II	S-NPP	74.96397	31.63897	13:36:00	D	2.70
32	AMRITSAR	AMRITSAR II	S-NPP	74.95310	31.65119	13:36:00	D	2.20
33	AMRITSAR	AMRITSAR II	S-NPP	74.96363	31.66298	13:36:00	D	2.90
34	AMRITSAR	AMRITSAR II	S-NPP	74.95592	31.70314	13:36:00	D	6.40
35	AMRITSAR	AMRITSAR II	S-NPP	74.96423	31.70432	13:36:00	D	5.90
36	AMRITSAR	AMRITSAR II	S-NPP	74.95528	31.70649	13:36:00	D	6.40
37	AMRITSAR	AMRITSAR II	S-NPP	74.84314	31.71605	13:36:00	D	4.40
38	AMRITSAR	BABA BAKALA	S-NPP	75.18943	31.52696	13:36:00	D	6.20
39	AMRITSAR	BABA BAKALA	TERRA-1	75.11787	31.52851	11:07:00	D	10.97
40	AMRITSAR	BABA BAKALA	S-NPP	75.14578	31.53115	13:36:00	D	10.50
41	AMRITSAR	BABA BAKALA	S-NPP	75.14996	31.53175	13:36:00	D	7.80
42	AMRITSAR	BABA BAKALA	S-NPP	75.14601	31.53215	13:36:00	D	20.20
43	AMRITSAR	BABA BAKALA	S-NPP	75.14538	31.53551	13:36:00	D	20.20
44	AMRITSAR	BABA BAKALA	S-NPP	75.25290	31.55730	13:36:00	D	2.50
45	AMRITSAR	BABA BAKALA	S-NPP	75.25710	31.55788	13:36:00	D	4.10
46	AMRITSAR	BABA BAKALA	S-NPP	75.19652	31.55985	13:36:00	D	3.10
47	AMRITSAR	BABA BAKALA	S-NPP	75.20170	31.57783	13:36:00	D	2.30
48	AMRITSAR	BABA BAKALA	S-NPP	75.26271	31.59666	13:36:00	D	2.70
49	AMRITSAR	BABA BAKALA	S-NPP	75.20435	31.60925	13:36:00	D	2.10
50	AMRITSAR	BABA BAKALA	S-NPP	75.23789	31.61394	13:36:00	D	5.90
51	AMRITSAR	BABA BAKALA	S-NPP	75.09619	31.64027	13:36:00	D	3.00
52	AMRITSAR	BABA BAKALA	S-NPP	75.22378	31.64305	13:36:00	D	2.10
53	AMRITSAR	BABA BAKALA	S-NPP	75.16407	31.66694	13:36:00	D	2.80
54	AMRITSAR	BABA BAKALA	S-NPP	75.15797	31.67644	13:36:00	D	10.60
55	AMRITSAR	BABA BAKALA	S-NPP	75.20892	31.68007	13:36:00	D	5.40
56	AMRITSAR	BABA BAKALA	S-NPP	75.19123	31.70523	13:36:00	D	2.30
57	AMRITSAR	BABA BAKALA	S-NPP	75.12037	31.71602	13:36:00	D	2.40
58	AMRITSAR	BABA BAKALA	S-NPP	75.17546	31.72029	13:36:00	D	1.70
59	BARNALA	TAPPA	S-NPP	75.59555	30.26730	13:36:00	D	1.40
60	BATHINDA	BATHINDA	S-NPP	74.98455	30.10853	13:36:00	D	2.00

61	BATHINDA	BATHINDA	S-NPP	74.98857	30.10911	13:36:00	D	2.00
62	BATHINDA	BATHINDA	S-NPP	74.77407	30.23711	13:36:00	D	2.40
63	BATHINDA	BATHINDA	S-NPP	74.82566	30.24804	13:36:00	D	3.20
64	BATHINDA	BATHINDA	S-NPP	74.83537	30.28358	13:36:00	D	4.80
65	BATHINDA	BATHINDA	S-NPP	74.83606	30.36811	13:36:00	D	3.40
66	BATHINDA	RAMPURA PHUL	S-NPP	75.26518	30.18629	13:36:00	D	3.30
67	BATHINDA	TALWANDI SABO	S-NPP	75.02031	29.98288	13:36:00	D	1.70
68	BATHINDA	TALWANDI SABO	S-NPP	74.98031	30.08501	13:36:00	D	1.60
69	FARIDKOT	FARIDKOT	S-NPP	74.78200	30.50235	13:36:00	D	3.10
70	FARIDKOT	FARIDKOT	S-NPP	74.75712	30.50471	13:36:00	D	2.10
71	FARIDKOT	FARIDKOT	S-NPP	74.86668	30.64892	13:36:00	D	3.20
72	FARIDKOT	FARIDKOT	S-NPP	74.62542	30.67193	13:36:00	D	7.60
73	FARIDKOT	FARIDKOT	S-NPP	74.65363	30.67606	13:36:00	D	2.30
74	FARIDKOT	FARIDKOT	S-NPP	74.57806	30.72569	13:36:00	D	3.00
75	FARIDKOT	FARIDKOT	S-NPP	74.64128	30.74173	13:36:00	D	3.20
76	FARIDKOT	FARIDKOT	S-NPP	74.67193	30.82346	13:36:00	D	3.60
77	FARIDKOT	FARIDKOT	S-NPP	74.67598	30.82405	13:36:00	D	5.50
78	FATEHGARH SAHIB	ALMOH	S-NPP	76.18888	30.55766	13:36:00	D	5.60
79	FATEHGARH SAHIB	ALMOH	S-NPP	76.25130	30.58014	13:36:00	D	1.40
80	FATEHGARH SAHIB	ALMOH	S-NPP	76.29044	30.61007	13:36:00	D	4.10
81	FATEHGARH SAHIB	ALMOH	S-NPP	76.29153	30.61212	13:36:00	D	6.40
82	FATEHGARH SAHIB	ALMOH	S-NPP	76.29031	30.61900	13:36:00	D	2.30
83	FIROZPUR	FAZILKA	S-NPP	74.07327	30.19037	13:36:00	D	3.70
84	FIROZPUR	FAZILKA	S-NPP	73.99645	30.24673	13:36:00	D	13.30
85	FIROZPUR	FAZILKA	S-NPP	74.01302	30.26624	13:36:00	D	4.70
86	FIROZPUR	FAZILKA	S-NPP	74.05100	30.32575	13:36:00	D	4.70
87	FIROZPUR	FIROZPUR	S-NPP	74.86183	30.76338	13:36:00	D	7.70
88	FIROZPUR	FIROZPUR	S-NPP	74.78387	30.79998	13:36:00	D	3.60
89	FIROZPUR	FIROZPUR	S-NPP	74.72990	30.82502	13:36:00	D	2.00
90	FIROZPUR	FIROZPUR	S-NPP	74.49892	30.88005	13:36:00	D	1.50
91	FIROZPUR	FIROZPUR	S-NPP	74.49827	30.88337	13:36:00	D	1.50
92	FIROZPUR	FIROZPUR	S-NPP	74.82345	30.92394	13:36:00	D	1.90

93	FIROZPUR	FIROZPUR	S-NPP	74.43527	30.93145	13:36:00	D	2.60
94	FIROZPUR	FIROZPUR	S-NPP	74.54292	30.95403	13:36:00	D	3.30
95	FIROZPUR	FIROZPUR	S-NPP	74.77997	30.97817	13:36:00	D	1.50
96	FIROZPUR	FIROZPUR	S-NPP	74.69331	31.05994	13:36:00	D	5.90
97	FIROZPUR	JALALABAD	S-NPP	74.18385	30.52568	13:36:00	D	2.90
98	FIROZPUR	JALALABAD	S-NPP	74.18346	30.52826	13:36:00	D	1.90
99	FIROZPUR	JALALABAD	S-NPP	74.36813	30.57275	13:36:00	D	18.10
100	FIROZPUR	JALALABAD	S-NPP	74.16569	30.61743	13:36:00	D	3.00
101	FIROZPUR	JALALABAD	S-NPP	74.21169	30.63452	13:36:00	D	2.60
102	FIROZPUR	JALALABAD	S-NPP	74.32909	30.79712	13:36:00	D	4.60
103	FIROZPUR	ZIRA	S-NPP	75.22271	30.87658	13:36:00	D	9.10
104	FIROZPUR	ZIRA	S-NPP	74.94717	30.89038	13:36:00	D	5.20
105	GURDASPUR	BATALA	S-NPP	75.39645	31.69553	13:36:00	D	3.40
106	GURDASPUR	BATALA	S-NPP	75.29664	31.69566	13:36:00	D	2.40
107	GURDASPUR	BATALA	S-NPP	75.26436	31.72924	13:36:00	D	3.00
108	GURDASPUR	BATALA	S-NPP	75.19974	31.75132	13:36:00	D	4.90
109	GURDASPUR	BATALA	S-NPP	75.16454	31.75753	13:36:00	D	2.70
110	GURDASPUR	BATALA	S-NPP	75.19395	31.76159	13:36:00	D	3.90
111	GURDASPUR	BATALA	S-NPP	75.23667	31.76403	13:36:00	D	3.80
112	GURDASPUR	BATALA	S-NPP	75.07214	31.81363	13:36:00	D	3.30
113	GURDASPUR	BATALA	S-NPP	75.28533	31.85032	13:36:00	D	3.70
114	GURDASPUR	BATALA	S-NPP	74.98358	31.90252	13:36:00	D	2.00
115	GURDASPUR	GURDASPUR	S-NPP	75.32146	31.89764	13:36:00	D	3.40
116	JALANDHAR	JALANDHAR II	S-NPP	75.46201	31.42223	13:36:00	D	9.30
117	JALANDHAR	JALANDHAR II	S-NPP	75.51089	31.43939	13:36:00	D	7.40
118	JALANDHAR	SHAHKOT	S-NPP	75.38177	31.03568	13:36:00	D	5.50
119	JALANDHAR	SHAHKOT	S-NPP	75.29474	31.04428	13:36:00	D	2.80
120	JALANDHAR	SHAHKOT	S-NPP	75.29411	31.04765	13:36:00	D	7.00
121	LUDHIANA	KHANNA	S-NPP	76.18755	30.70280	13:36:00	D	4.90
122	LUDHIANA	KHANNA	S-NPP	76.15849	30.71652	13:36:00	D	1.40
123	LUDHIANA	LUDHIANA WEST	S-NPP	75.79975	30.93623	13:36:00	D	3.30
124	LUDHIANA	PAYAL	S-NPP	75.98209	30.74185	13:36:00	D	1.90



125	LUDHIANA	SAMRALA	TERRA-1	76.27404	30.90418	11:07:00	D	16.73
126	LUDHIANA	SAMRALA	S-NPP	76.19730	30.95832	13:36:00	D	35.20
127	MANSA	BUDHLADA	S-NPP	75.71147	29.78259	13:36:00	D	5.90
128	MANSA	BUDHLADA	S-NPP	75.73311	29.92097	13:36:00	D	2.40
129	MANSA	BUDHLADA	S-NPP	75.71535	29.92542	13:36:00	D	3.20
130	MANSA	SARDULGARH	S-NPP	75.26376	29.55825	13:36:00	D	3.50
131	MANSA	SARDULGARH	S-NPP	75.26288	29.65233	13:36:00	D	2.20
132	MANSA	SARDULGARH	S-NPP	75.26782	29.67016	13:36:00	D	4.00
133	MANSA	SARDULGARH	S-NPP	75.28271	29.67914	13:36:00	D	3.50
134	MANSA	SARDULGARH	S-NPP	75.28366	29.74302	13:36:00	D	5.40
135	MANSA	SARDULGARH	S-NPP	75.28304	29.74636	13:36:00	D	5.40
136	MANSA	SARDULGARH	S-NPP	75.32286	29.75546	13:36:00	D	6.00
137	MANSA	SARDULGARH	S-NPP	75.32970	29.76330	13:36:00	D	26.50
138	MOGA	BAGHA PURANA	S-NPP	74.91380	30.75373	13:36:00	D	2.20
139	MOGA	BAGHA PURANA	S-NPP	74.91786	30.75431	13:36:00	D	2.20
140	MOGA	MOGA	S-NPP	75.22743	30.75867	13:36:00	D	6.80
141	MOGA	MOGA	S-NPP	75.04139	30.80961	13:36:00	D	2.00
142	MUKTSAR	MALAUT	S-NPP	74.43266	30.04820	13:36:00	D	7.30
143	MUKTSAR	MALAUT	S-NPP	74.45741	30.17349	13:36:00	D	5.00
144	MUKTSAR	MALAUT	S-NPP	74.51868	30.21659	13:36:00	D	9.90
145	MUKTSAR	MALAUT	S-NPP	74.51804	30.21990	13:36:00	D	4.80
146	MUKTSAR	MUKTSAR	S-NPP	74.46872	30.45628	13:36:00	D	1.70
147	PATIALA	NABHA	S-NPP	76.07742	30.33743	13:36:00	D	20.70
148	PATIALA	NABHA	S-NPP	76.23869	30.39667	13:36:00	D	4.10
149	PATIALA	NABHA	TERRA-1	76.21095	30.41759	11:07:00	D	6.81
150	PATIALA	NABHA	S-NPP	76.21540	30.55772	13:36:00	D	8.00
151	PATIALA	NABHA	S-NPP	76.26363	30.56068	13:36:00	D	5.20
152	PATIALA	PATIALA	S-NPP	76.57181	30.13186	13:36:00	D	8.80
153	PATIALA	PATIALA	S-NPP	76.60029	30.17459	13:36:00	D	2.90
154	PATIALA	PATIALA	S-NPP	76.30205	30.17909	13:36:00	D	4.30
155	PATIALA	PATIALA	S-NPP	76.30119	30.18028	13:36:00	D	4.30
156	PATIALA	PATIALA	S-NPP	76.58426	30.21973	13:36:00	D	3.90

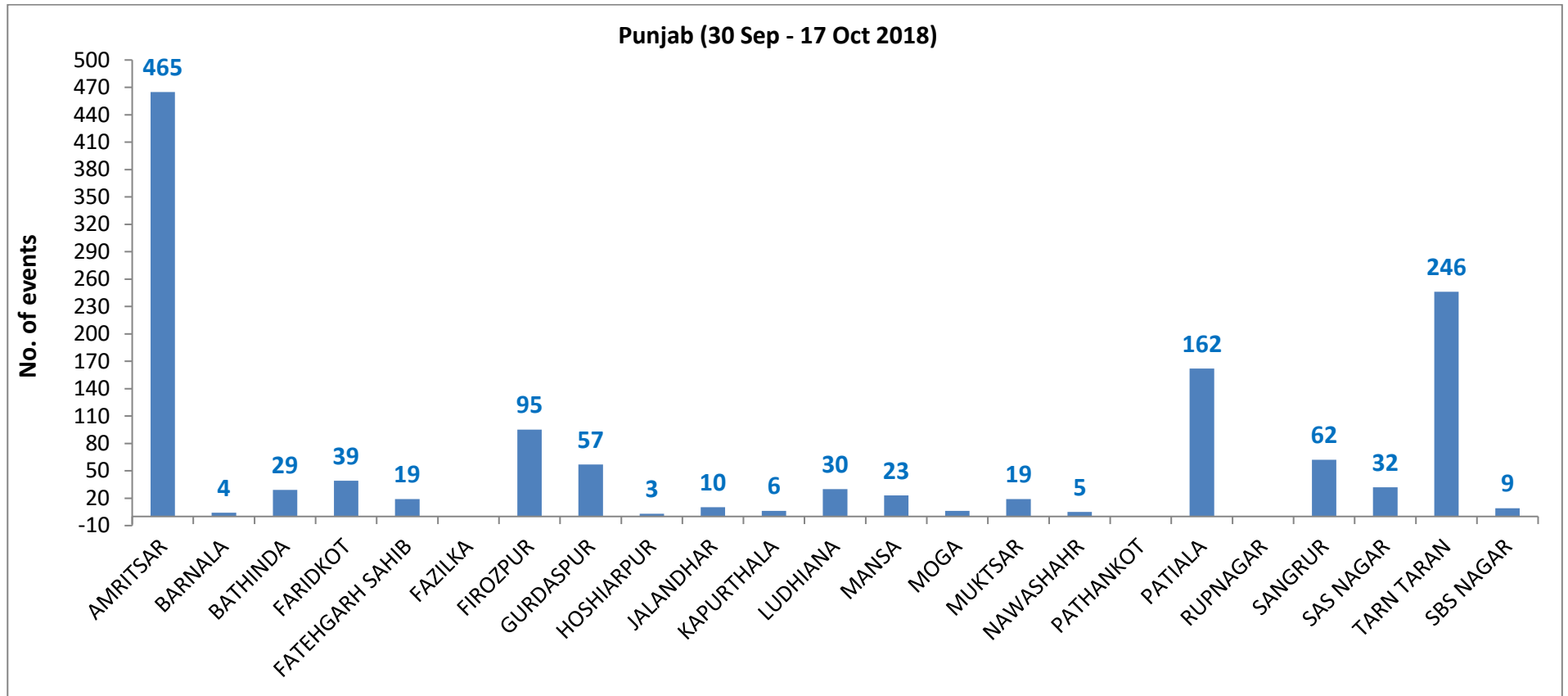
157	PATIALA	PATIALA	S-NPP	76.19788	30.24580	13:36:00	D	2.30
158	PATIALA	PATIALA	S-NPP	76.44826	30.25487	13:36:00	D	1.90
159	PATIALA	PATIALA	S-NPP	76.27885	30.26030	13:36:00	D	4.20
160	PATIALA	PATIALA	S-NPP	76.50879	30.26646	13:36:00	D	5.00
161	PATIALA	PATIALA	S-NPP	76.21057	30.27838	13:36:00	D	5.60
162	PATIALA	PATIALA	S-NPP	76.21732	30.28980	13:36:00	D	4.00
163	PATIALA	PATIALA	S-NPP	76.34396	30.39822	13:36:00	D	2.70
164	PATIALA	PATIALA	S-NPP	76.34441	30.40011	13:36:00	D	3.60
165	PATIALA	RAJPURA	S-NPP	76.64133	30.39189	13:36:00	D	1.90
166	PATIALA	RAJPURA	S-NPP	76.69325	30.49189	13:36:00	D	3.30
167	PATIALA	RAJPURA	S-NPP	76.72337	30.50295	13:36:00	D	2.60
168	PATIALA	RAJPURA	S-NPP	76.74458	30.51286	13:36:00	D	3.20
169	PATIALA	RAJPURA	S-NPP	76.65562	30.55111	13:36:00	D	3.20
170	PATIALA	RAJPURA	S-NPP	76.65218	30.55161	13:36:00	D	3.50
171	PATIALA	RAJPURA	S-NPP	76.64733	30.57948	13:36:00	D	3.80
172	PATIALA	RAJPURA	S-NPP	76.54183	30.60238	02:18:00	N	0.90
173	PATIALA	SAMANA	S-NPP	76.15099	29.82889	13:36:00	D	5.40
174	PATIALA	SAMANA	S-NPP	76.15785	29.84365	13:36:00	D	1.70
175	PATIALA	SAMANA	S-NPP	76.14757	29.85273	13:36:00	D	5.30
176	PATIALA	SAMANA	S-NPP	76.18384	29.86811	13:36:00	D	4.90
177	PATIALA	SAMANA	S-NPP	76.18807	29.86868	13:36:00	D	4.90
178	PATIALA	SAMANA	S-NPP	76.15722	29.87149	13:36:00	D	1.90
179	PATIALA	SAMANA	S-NPP	76.18324	29.87152	13:36:00	D	4.90
180	PATIALA	SAMANA	S-NPP	76.18747	29.87210	13:36:00	D	4.90
181	PATIALA	SAMANA	S-NPP	76.19050	29.87949	13:36:00	D	6.50
182	PATIALA	SAMANA	TERRA-1	76.15126	29.91154	11:07:00	D	7.71
183	PATIALA	SAMANA	S-NPP	76.09016	29.93209	13:36:00	D	4.40
184	PATIALA	SAMANA	S-NPP	76.09010	29.93516	13:36:00	D	2.30
185	PATIALA	SAMANA	S-NPP	76.06895	29.95669	13:36:00	D	4.10
186	PATIALA	SAMANA	S-NPP	76.06834	29.96010	13:36:00	D	2.80
187	PATIALA	SAMANA	S-NPP	76.17655	30.03420	13:36:00	D	3.90
188	PATIALA	SAMANA	S-NPP	76.19707	30.09952	13:36:00	D	4.80

189	PATIALA	SAMANA	S-NPP	76.23006	30.16006	13:36:00	D	2.70
190	PATIALA	SAMANA	S-NPP	76.24597	30.16924	13:36:00	D	6.00
191	PATIALA	SAMANA	S-NPP	76.26254	30.17501	13:36:00	D	2.20
192	PATIALA	SAMANA	S-NPP	76.25231	30.18652	13:36:00	D	2.40
193	PATIALA	SAMANA	S-NPP	76.10705	30.21595	13:36:00	D	4.30
194	SANGRUR	MALERKOTLA	S-NPP	76.02760	30.39983	13:36:00	D	1.50
195	SANGRUR	MOONAK	S-NPP	75.86168	29.79219	13:36:00	D	3.20
196	SANGRUR	MOONAK	S-NPP	75.83566	29.86900	13:36:00	D	2.10
197	SANGRUR	MOONAK	S-NPP	76.04517	29.87016	13:36:00	D	1.40
198	SANGRUR	SANGRUR	S-NPP	76.05732	30.20219	13:36:00	D	5.00
199	SANGRUR	SANGRUR	S-NPP	76.01252	30.21003	13:36:00	D	6.00
200	SANGRUR	SUNAM	S-NPP	75.84779	29.99231	13:36:00	D	1.60
201	SANGRUR	SUNAM	S-NPP	75.93014	30.04235	13:36:00	D	6.20
202	SANGRUR	SUNAM	S-NPP	75.96056	30.08823	13:36:00	D	5.40
203	SANGRUR	SUNAM	S-NPP	75.70346	30.09067	13:36:00	D	2.10
204	SAS NAGAR	DERABASSI	S-NPP	76.87292	30.49006	13:36:00	D	3.10
205	SAS NAGAR	DERABASSI	S-NPP	76.81324	30.56840	13:36:00	D	2.00
206	SAS NAGAR	DERABASSI	S-NPP	76.81449	30.56885	13:36:00	D	2.10
207	SAS NAGAR	DERABASSI	S-NPP	76.90860	30.58800	13:36:00	D	3.30
208	SAS NAGAR	DERABASSI	S-NPP	76.90285	30.59445	13:36:00	D	2.60
209	SBS NAGAR	MOHALI	S-NPP	76.73537	30.62665	13:36:00	D	2.30
210	TARN TARAN	KHADOOR SAHIB	S-NPP	74.93734	31.23399	13:36:00	D	2.00
211	TARN TARAN	KHADOOR SAHIB	S-NPP	75.01078	31.24786	13:36:00	D	4.70
212	TARN TARAN	KHADOOR SAHIB	S-NPP	75.01519	31.26908	13:36:00	D	1.40
213	TARN TARAN	KHADOOR SAHIB	S-NPP	75.04254	31.30519	13:36:00	D	4.60
214	TARN TARAN	KHADOOR SAHIB	S-NPP	75.04668	31.30577	13:36:00	D	8.50
215	TARN TARAN	KHADOOR SAHIB	S-NPP	75.04191	31.30854	13:36:00	D	4.80
216	TARN TARAN	KHADOOR SAHIB	S-NPP	75.04604	31.30912	13:36:00	D	8.90
217	TARN TARAN	KHADOOR SAHIB	S-NPP	75.09796	31.32671	13:36:00	D	3.50
218	TARN TARAN	KHADOOR SAHIB	S-NPP	75.09348	31.35016	13:36:00	D	1.80
219	TARN TARAN	KHADOOR SAHIB	S-NPP	75.11166	31.36649	13:36:00	D	11.80
220	TARN TARAN	KHADOOR SAHIB	S-NPP	75.11934	31.37100	13:36:00	D	9.60

221	TARN TARAN	KHADOOR SAHIB	S-NPP	75.11454	31.37377	13:36:00	D	2.20
222	TARN TARAN	KHADOOR SAHIB	S-NPP	74.89330	31.37670	13:36:00	D	3.60
223	TARN TARAN	KHADOOR SAHIB	S-NPP	75.10848	31.38324	13:36:00	D	3.40
224	TARN TARAN	KHADOOR SAHIB	S-NPP	75.06033	31.39019	13:36:00	D	5.40
225	TARN TARAN	KHADOOR SAHIB	S-NPP	75.06191	31.40417	13:36:00	D	4.20
226	TARN TARAN	KHADOOR SAHIB	S-NPP	75.00237	31.41117	13:36:00	D	2.00
227	TARN TARAN	KHADOOR SAHIB	S-NPP	75.01286	31.42295	13:36:00	D	4.30
228	TARN TARAN	KHADOOR SAHIB	S-NPP	74.66068	31.43100	13:36:00	D	4.60
229	TARN TARAN	KHADOOR SAHIB	S-NPP	75.08971	31.44406	13:36:00	D	3.80
230	TARN TARAN	KHADOOR SAHIB	S-NPP	75.16651	31.44446	13:36:00	D	4.30
231	TARN TARAN	KHADOOR SAHIB	S-NPP	74.72893	31.44768	13:36:00	D	3.70
232	TARN TARAN	KHADOOR SAHIB	S-NPP	74.67313	31.45332	13:36:00	D	3.60
233	TARN TARAN	KHADOOR SAHIB	S-NPP	74.73583	31.45552	13:36:00	D	4.50
234	TARN TARAN	KHADOOR SAHIB	S-NPP	74.82807	31.45849	13:36:00	D	4.40
235	TARN TARAN	KHADOOR SAHIB	S-NPP	74.74490	31.47394	13:36:00	D	2.80
236	TARN TARAN	KHADOOR SAHIB	S-NPP	75.13099	31.47395	13:36:00	D	3.60
237	TARN TARAN	KHADOOR SAHIB	S-NPP	74.74483	31.47572	13:36:00	D	4.20
238	TARN TARAN	KHADOOR SAHIB	S-NPP	74.71074	31.47770	13:36:00	D	2.30
239	TARN TARAN	KHADOOR SAHIB	S-NPP	75.01918	31.47883	13:36:00	D	5.90
240	TARN TARAN	KHADOOR SAHIB	S-NPP	75.05872	31.49475	13:36:00	D	4.70
241	TARN TARAN	KHADOOR SAHIB	S-NPP	74.99462	31.49597	13:36:00	D	4.60
242	TARN TARAN	KHADOOR SAHIB	S-NPP	75.05329	31.50086	13:36:00	D	9.70
243	TARN TARAN	KHADOOR SAHIB	S-NPP	74.88339	31.50223	13:36:00	D	2.00
244	TARN TARAN	KHADOOR SAHIB	S-NPP	75.17173	31.50723	13:36:00	D	1.90
245	TARN TARAN	KHADOOR SAHIB	S-NPP	74.71312	31.50883	13:36:00	D	3.80
246	TARN TARAN	KHADOOR SAHIB	S-NPP	74.87321	31.51108	13:36:00	D	2.20
247	TARN TARAN	KHADOOR SAHIB	S-NPP	74.71247	31.51216	13:36:00	D	2.20
248	TARN TARAN	KHADOOR SAHIB	S-NPP	74.88431	31.51951	13:36:00	D	2.40
249	TARN TARAN	PATTI	S-NPP	74.56310	31.17330	13:36:00	D	3.30
250	TARN TARAN	PATTI	S-NPP	74.74191	31.17865	13:36:00	D	2.40
251	TARN TARAN	PATTI	S-NPP	74.87874	31.18794	13:36:00	D	3.90
252	TARN TARAN	PATTI	S-NPP	74.71698	31.19899	13:36:00	D	3.40

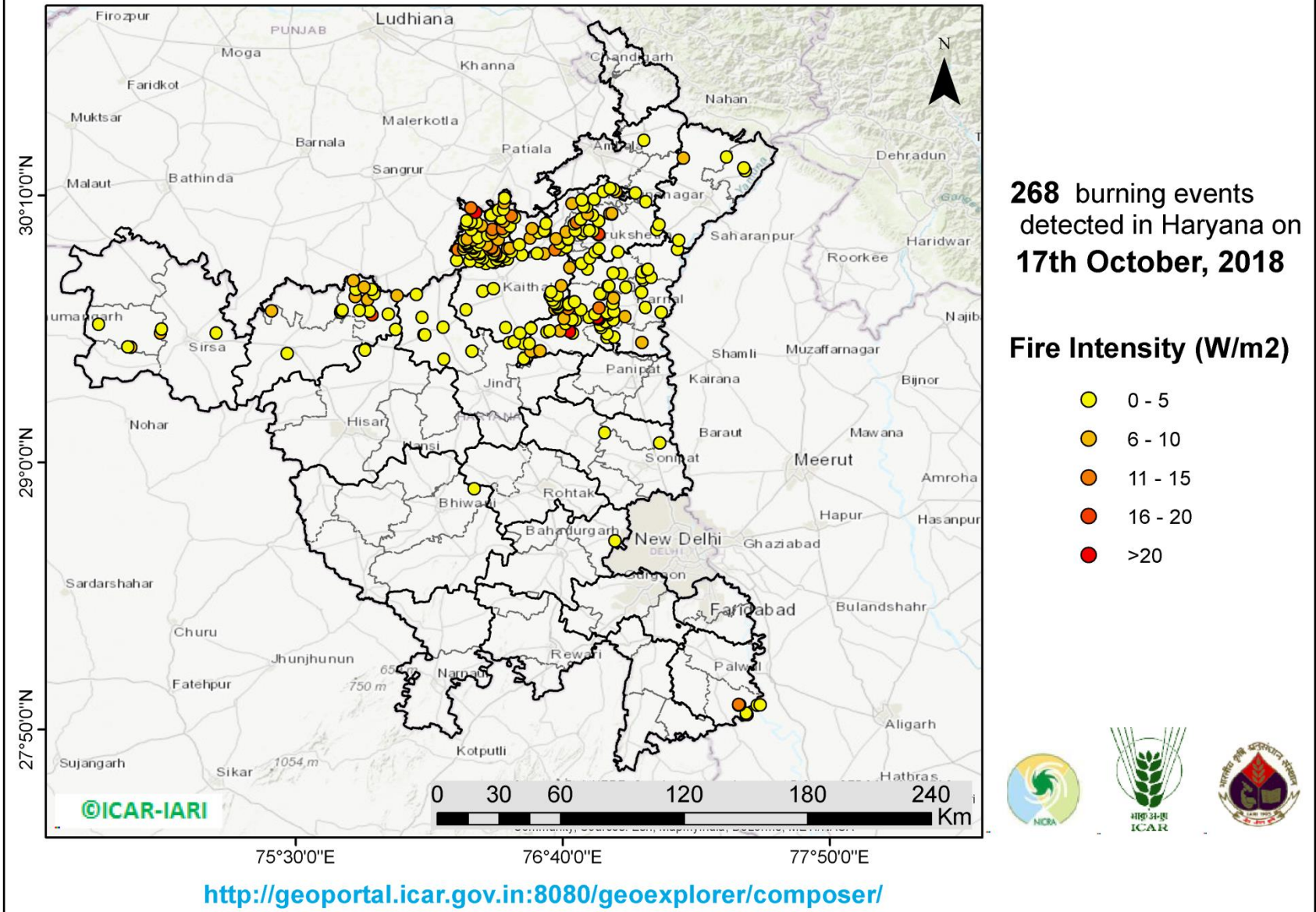
253	TARN TARAN	PATTI	S-NPP	74.72514	31.20017	13:36:00	D	2.00
254	TARN TARAN	PATTI	S-NPP	74.66894	31.20914	13:36:00	D	7.60
255	TARN TARAN	PATTI	S-NPP	74.55334	31.22306	13:36:00	D	11.70
256	TARN TARAN	PATTI	S-NPP	74.87167	31.22462	13:36:00	D	2.30
257	TARN TARAN	PATTI	S-NPP	74.55269	31.22638	13:36:00	D	6.30
258	TARN TARAN	PATTI	S-NPP	74.79348	31.23737	13:36:00	D	1.30
259	TARN TARAN	PATTI	S-NPP	74.57766	31.24920	13:36:00	D	4.20
260	TARN TARAN	PATTI	S-NPP	74.73315	31.26817	13:36:00	D	2.50
261	TARN TARAN	PATTI	S-NPP	74.60223	31.27324	13:36:00	D	7.20
262	TARN TARAN	PATTI	S-NPP	74.58872	31.27811	13:36:00	D	11.20
263	TARN TARAN	PATTI	S-NPP	74.64980	31.28694	13:36:00	D	5.50
264	TARN TARAN	PATTI	S-NPP	74.53944	31.29485	13:36:00	D	3.10
265	TARN TARAN	PATTI	S-NPP	74.66009	31.29868	13:36:00	D	5.10
266	TARN TARAN	PATTI	S-NPP	74.68003	31.32548	13:36:00	D	3.10
267	TARN TARAN	PATTI	S-NPP	74.57897	31.32791	13:36:00	D	1.60
268	TARN TARAN	PATTI	S-NPP	74.76651	31.33453	13:36:00	D	4.90
269	TARN TARAN	PATTI	S-NPP	74.77060	31.33512	13:36:00	D	3.40
270	TARN TARAN	PATTI	S-NPP	74.90191	31.35393	13:36:00	D	4.10
271	TARN TARAN	PATTI	S-NPP	74.60918	31.37231	13:36:00	D	2.50
272	TARN TARAN	PATTI	S-NPP	74.66911	31.38777	13:36:00	D	9.80

**District-wise cumulative number of residue burning events in Punjab (30-Sep-2018 to 17-Oct-2018)**



(b) Haryana

PADDY RESIDUE BURNING IN HARYANA



### Details of residue burning events in Haryana on 17-Oct-2018

Event S. No.	District	Tehsil/Block	Satellite	Longitude	Latitude	Time (IST)	Day/Night	Fire Power (W/m <sup>2</sup> )
1	AMBALA	BARARA	S-NPP	76.98277	30.17800	13:36	D	2.70
2	AMBALA	NARAYANGARH	S-NPP	77.02055	30.40876	13:36	D	1.90
3	BHIWANI	BHIWANI	S-NPP	76.27799	28.88562	13:36	D	3.50
4	FARIDABAD	HODAL	S-NPP	77.46841	27.89816	13:36	D	12.10
5	FARIDABAD	HODAL	S-NPP	77.47282	27.89874	13:36	D	22.90
6	FARIDABAD	HODAL	S-NPP	77.46725	27.90518	13:36	D	3.00
7	FARIDABAD	HODAL	S-NPP	77.51566	27.94025	13:36	D	1.50
8	FARIDABAD	HODAL	S-NPP	77.43448	27.94027	13:36	D	9.30
9	FARIDABAD	HODAL	S-NPP	77.43887	27.94085	13:36	D	5.10
10	FARIDABAD	HODAL	S-NPP	77.52897	27.94200	13:36	D	3.90
11	FARIDABAD	HODAL	S-NPP	77.43390	27.94377	13:36	D	11.70
12	FATEHABAD	FATEHABAD	S-NPP	75.46207	29.47811	02:18	N	0.50
13	FATEHABAD	FATEHABAD	S-NPP	75.39341	29.66412	13:36	D	6.50
14	FATEHABAD	TOHANA	S-NPP	75.93600	29.58313	13:36	D	1.50
15	FATEHABAD	TOHANA	S-NPP	75.83266	29.64573	13:36	D	18.50
16	FATEHABAD	TOHANA	S-NPP	75.90421	29.64877	13:36	D	2.60
17	FATEHABAD	TOHANA	S-NPP	75.69547	29.65755	13:36	D	3.40
18	FATEHABAD	TOHANA	S-NPP	75.82135	29.66145	13:36	D	2.70
19	FATEHABAD	TOHANA	S-NPP	75.69834	29.66485	13:36	D	4.00
20	FATEHABAD	TOHANA	S-NPP	75.70245	29.66543	13:36	D	4.00
21	FATEHABAD	TOHANA	S-NPP	75.69849	29.66575	13:36	D	4.90
22	FATEHABAD	TOHANA	S-NPP	75.77827	29.66577	13:36	D	3.50
23	FATEHABAD	TOHANA	S-NPP	75.70260	29.66632	13:36	D	4.90
24	FATEHABAD	TOHANA	S-NPP	75.81243	29.71264	13:36	D	9.30
25	FATEHABAD	TOHANA	S-NPP	75.75922	29.72598	13:36	D	5.20
26	FATEHABAD	TOHANA	S-NPP	75.94099	29.73040	13:36	D	9.80
27	FATEHABAD	TOHANA	S-NPP	75.84184	29.73748	13:36	D	2.40



28	FATEHABAD	TOHANA	S-NPP	75.82990	29.75658	13:36	D	2.50
29	FATEHABAD	TOHANA	S-NPP	75.76194	29.75745	13:36	D	2.50
30	FATEHABAD	TOHANA	S-NPP	75.79849	29.76604	13:36	D	9.60
31	FATEHABAD	TOHANA	S-NPP	75.75148	29.79504	13:36	D	9.50
32	HISAR	HISAR	S-NPP	75.80091	29.49167	02:18	N	0.60
33	JHAJJAR	BAHADURGARH	S-NPP	76.89455	28.65903	02:18	N	0.40
34	JIND	JIND	S-NPP	76.49681	29.45174	13:36	D	2.40
35	JIND	JIND	S-NPP	76.49724	29.45439	13:36	D	4.60
36	JIND	JIND	S-NPP	76.43278	29.52298	13:36	D	4.10
37	JIND	JIND	S-NPP	76.45351	29.52930	13:36	D	1.70
38	JIND	NARWANA	S-NPP	76.14680	29.45250	13:36	D	4.50
39	JIND	NARWANA	S-NPP	76.26978	29.48676	13:36	D	1.80
40	JIND	NARWANA	S-NPP	76.05974	29.55866	13:36	D	2.30
41	JIND	NARWANA	S-NPP	76.06391	29.55924	13:36	D	2.90
42	JIND	NARWANA	S-NPP	76.14397	29.59115	13:36	D	1.20
43	JIND	NARWANA	S-NPP	76.05181	29.63443	13:36	D	1.70
44	JIND	NARWANA	S-NPP	76.02567	29.73507	13:36	D	5.00
45	KAITHAL	GUHLA	S-NPP	76.20261	29.88463	13:36	D	3.20
46	KAITHAL	GUHLA	S-NPP	76.41383	29.90252	13:36	D	3.00
47	KAITHAL	GUHLA	S-NPP	76.26277	29.91378	13:36	D	3.90
48	KAITHAL	GUHLA	S-NPP	76.44159	29.92031	13:36	D	3.10
49	KAITHAL	GUHLA	S-NPP	76.20747	29.93075	13:36	D	11.10
50	KAITHAL	GUHLA	S-NPP	76.34705	29.93221	13:36	D	10.20
51	KAITHAL	GUHLA	S-NPP	76.23297	29.93423	13:36	D	2.00
52	KAITHAL	GUHLA	S-NPP	76.42563	29.93577	13:36	D	6.30
53	KAITHAL	GUHLA	S-NPP	76.27619	29.93662	13:36	D	2.50
54	KAITHAL	GUHLA	S-NPP	76.43427	29.93692	13:36	D	7.40
55	KAITHAL	GUHLA	S-NPP	76.27559	29.94005	13:36	D	2.50
56	KAITHAL	GUHLA	S-NPP	76.35442	29.94023	13:36	D	13.90
57	KAITHAL	GUHLA	S-NPP	76.27499	29.94347	13:36	D	1.80
58	KAITHAL	GUHLA	S-NPP	76.23541	29.94507	13:36	D	6.40
59	KAITHAL	GUHLA	S-NPP	76.25245	29.94740	13:36	D	1.80

60	KAITHAL	GUHLA	S-NPP	76.29573	29.94980	13:36	D	5.00
61	KAITHAL	GUHLA	TERRA-1	76.33373	29.95047	11:07	D	8.72
62	KAITHAL	GUHLA	S-NPP	76.24709	29.95625	13:36	D	16.90
63	KAITHAL	GUHLA	S-NPP	76.25135	29.95682	13:36	D	16.90
64	KAITHAL	GUHLA	S-NPP	76.24648	29.95967	13:36	D	16.90
65	KAITHAL	GUHLA	S-NPP	76.24161	29.96252	13:36	D	4.10
66	KAITHAL	GUHLA	S-NPP	76.24587	29.96309	13:36	D	4.30
67	KAITHAL	GUHLA	S-NPP	76.30265	29.96367	13:36	D	3.00
68	KAITHAL	GUHLA	S-NPP	76.23552	29.97221	13:36	D	2.70
69	KAITHAL	GUHLA	S-NPP	76.27455	29.97394	13:36	D	7.40
70	KAITHAL	GUHLA	S-NPP	76.38422	29.97450	13:36	D	5.80
71	KAITHAL	GUHLA	S-NPP	76.38335	29.97578	13:36	D	6.50
72	KAITHAL	GUHLA	S-NPP	76.24771	29.97735	13:36	D	5.60
73	KAITHAL	GUHLA	S-NPP	76.29473	29.98365	13:36	D	2.30
74	KAITHAL	GUHLA	S-NPP	76.33699	29.99281	13:36	D	3.40
75	KAITHAL	GUHLA	S-NPP	76.35726	30.00254	13:36	D	6.10
76	KAITHAL	GUHLA	S-NPP	76.40895	30.00945	13:36	D	1.30
77	KAITHAL	GUHLA	S-NPP	76.26667	30.01844	13:36	D	3.90
78	KAITHAL	GUHLA	S-NPP	76.35854	30.02029	13:36	D	14.30
79	KAITHAL	GUHLA	S-NPP	76.40222	30.02263	13:36	D	10.10
80	KAITHAL	GUHLA	S-NPP	76.31195	30.03509	13:36	D	7.80
81	KAITHAL	GUHLA	TERRA-1	76.25870	30.04180	11:07	D	15.44
82	KAITHAL	GUHLA	S-NPP	76.24473	30.04350	13:36	D	2.50
83	KAITHAL	GUHLA	S-NPP	76.28751	30.04933	13:36	D	4.50
84	KAITHAL	GUHLA	S-NPP	76.26061	30.05268	13:36	D	2.20
85	KAITHAL	GUHLA	S-NPP	76.26488	30.05326	13:36	D	2.70
86	KAITHAL	GUHLA	S-NPP	76.40973	30.05532	13:36	D	5.30
87	KAITHAL	GUHLA	S-NPP	76.24657	30.05777	13:36	D	2.70
88	KAITHAL	GUHLA	S-NPP	76.39005	30.06675	13:36	D	3.50
89	KAITHAL	GUHLA	S-NPP	76.39868	30.06791	13:36	D	3.20
90	KAITHAL	GUHLA	TERRA-1	76.44082	30.07863	11:07	D	10.65
91	KAITHAL	GUHLA	S-NPP	76.34952	30.08134	13:36	D	2.70

92	KAITHAL	GUHLA	S-NPP	76.35382	30.08191	13:36	D	2.70
93	KAITHAL	GUHLA	S-NPP	76.28568	30.09391	13:36	D	44.20
94	KAITHAL	GUHLA	S-NPP	76.38531	30.10368	13:36	D	3.40
95	KAITHAL	GUHLA	S-NPP	76.40694	30.10656	13:36	D	4.80
96	KAITHAL	GUHLA	TERRA-1	76.26381	30.11366	11:07	D	13.84
97	KAITHAL	GUHLA	S-NPP	76.41075	30.13525	13:36	D	8.40
98	KAITHAL	GUHLA	S-NPP	76.41147	30.15648	13:36	D	1.90
99	KAITHAL	KAITHAL	S-NPP	76.49440	29.52079	13:36	D	1.60
100	KAITHAL	KAITHAL	S-NPP	76.47823	29.56646	13:36	D	1.40
101	KAITHAL	KAITHAL	S-NPP	76.52736	29.58707	13:36	D	1.70
102	KAITHAL	KAITHAL	S-NPP	76.41720	29.58990	13:36	D	2.30
103	KAITHAL	KAITHAL	S-NPP	76.24404	29.66757	13:36	D	2.80
104	KAITHAL	KAITHAL	S-NPP	76.63205	29.67164	13:36	D	5.30
105	KAITHAL	KAITHAL	S-NPP	76.64449	29.67686	13:36	D	3.90
106	KAITHAL	KAITHAL	S-NPP	76.64388	29.68031	13:36	D	3.90
107	KAITHAL	KAITHAL	S-NPP	76.69118	29.69022	13:36	D	1.80
108	KAITHAL	KAITHAL	S-NPP	76.69261	29.69212	13:36	D	3.60
109	KAITHAL	KAITHAL	S-NPP	76.63910	29.69218	13:36	D	3.30
110	KAITHAL	KAITHAL	S-NPP	76.63850	29.69564	13:36	D	3.30
111	KAITHAL	KAITHAL	S-NPP	76.62920	29.69795	13:36	D	4.90
112	KAITHAL	KAITHAL	S-NPP	76.62246	29.71120	13:36	D	2.90
113	KAITHAL	KAITHAL	S-NPP	76.61018	29.73078	13:36	D	3.80
114	KAITHAL	KAITHAL	S-NPP	76.61452	29.73136	13:36	D	3.80
115	KAITHAL	KAITHAL	S-NPP	76.64121	29.73136	13:36	D	2.90
116	KAITHAL	KAITHAL	S-NPP	76.61646	29.74575	13:36	D	1.50
117	KAITHAL	KAITHAL	S-NPP	76.31698	29.75003	13:36	D	2.00
118	KAITHAL	KAITHAL	S-NPP	76.36333	29.75972	13:36	D	2.40
119	KAITHAL	KAITHAL	S-NPP	76.66078	29.77291	13:36	D	6.00
120	KAITHAL	KAITHAL	TERRA-1	76.69661	29.85225	11:07	D	7.32
121	KAITHAL	KAITHAL	S-NPP	76.33163	29.87047	13:36	D	2.10
122	KAITHAL	KAITHAL	S-NPP	76.36590	29.87504	13:36	D	7.20
123	KAITHAL	KAITHAL	S-NPP	76.35672	29.87733	13:36	D	3.60

124	KAITHAL	KAITHAL	S-NPP	76.29929	29.88017	13:36	D	2.10
125	KAITHAL	KAITHAL	S-NPP	76.25970	29.88185	13:36	D	4.80
126	KAITHAL	KAITHAL	S-NPP	76.39964	29.88305	13:36	D	3.50
127	KAITHAL	KAITHAL	S-NPP	76.39904	29.88648	13:36	D	3.50
128	KAITHAL	KAITHAL	S-NPP	76.37696	29.88705	13:36	D	3.70
129	KAITHAL	KAITHAL	S-NPP	76.42486	29.88992	13:36	D	3.40
130	KAITHAL	KAITHAL	S-NPP	76.31884	29.89331	13:36	D	4.00
131	KAITHAL	KAITHAL	S-NPP	76.30480	29.89844	13:36	D	4.20
132	KAITHAL	KAITHAL	S-NPP	76.38313	29.90193	13:36	D	3.80
133	KAITHAL	KAITHAL	S-NPP	76.39172	29.90308	13:36	D	3.00
134	KAITHAL	KAITHAL	S-NPP	76.39112	29.90652	13:36	D	3.00
135	KAITHAL	KAITHAL	S-NPP	76.36844	29.91051	13:36	D	18.20
136	KAITHAL	KAITHAL	S-NPP	76.37273	29.91108	13:36	D	18.20
137	KAITHAL	KAITHAL	TERRA-1	76.30417	29.91254	11:07	D	12.00
138	KAITHAL	KAITHAL	S-NPP	76.36355	29.91336	13:36	D	3.90
139	KAITHAL	KAITHAL	TERRA-1	76.58611	29.91379	11:07	D	7.71
140	KAITHAL	KAITHAL	S-NPP	76.28897	29.91382	13:36	D	10.90
141	KAITHAL	KAITHAL	S-NPP	76.30545	29.91956	13:36	D	3.90
142	KAITHAL	KAITHAL	S-NPP	76.27862	29.92294	13:36	D	3.40
143	KAITHAL	KAITHAL	TERRA-1	76.36613	29.92502	11:07	D	8.49
144	KAITHAL	KAITHAL	S-NPP	76.35503	29.93680	13:36	D	13.50
145	KAITHAL	KAITHAL	S-NPP	76.47566	29.95306	13:36	D	1.90
146	KARNAL	ASSANDH	S-NPP	76.52671	29.48645	13:36	D	6.60
147	KARNAL	ASSANDH	S-NPP	76.56599	29.48816	13:36	D	6.40
148	KARNAL	ASSANDH	S-NPP	76.52073	29.52083	13:36	D	2.50
149	KARNAL	ASSANDH	S-NPP	76.70726	29.56708	13:36	D	2.00
150	KARNAL	ASSANDH	S-NPP	76.59624	29.57153	13:36	D	1.80
151	KARNAL	ASSANDH	S-NPP	76.69737	29.57283	13:36	D	25.60
152	KARNAL	ASSANDH	TERRA-1	76.65432	29.57617	11:07	D	9.85
153	KARNAL	ASSANDH	S-NPP	76.60863	29.57669	13:36	D	2.50
154	KARNAL	ASSANDH	S-NPP	76.67879	29.60714	13:36	D	2.70
155	KARNAL	ASSANDH	S-NPP	76.70748	29.62155	13:36	D	2.10

156	KARNAL	ASSANDH	S-NPP	76.72058	29.62328	13:36	D	3.40
157	KARNAL	ASSANDH	S-NPP	76.70689	29.62501	13:36	D	2.10
158	KARNAL	ASSANDH	TERRA-1	76.67137	29.63007	11:07	D	5.86
159	KARNAL	ASSANDH	S-NPP	76.68980	29.67232	13:36	D	13.00
160	KARNAL	GHARAUNDA	S-NPP	77.01152	29.52526	13:36	D	6.40
161	KARNAL	GHARAUNDA	S-NPP	76.85824	29.54810	13:36	D	4.20
162	KARNAL	GHARAUNDA	S-NPP	76.88969	29.54867	13:36	D	2.10
163	KARNAL	GHARAUNDA	S-NPP	76.86025	29.56259	13:36	D	2.40
164	KARNAL	INDRI	S-NPP	77.05317	29.81048	13:36	D	3.40
165	KARNAL	INDRI	S-NPP	77.01242	29.83385	13:36	D	2.90
166	KARNAL	INDRI	S-NPP	77.03484	29.84376	13:36	D	4.70
167	KARNAL	INDRI	S-NPP	77.03823	29.84443	13:36	D	4.10
168	KARNAL	INDRI	S-NPP	77.16811	29.93286	13:36	D	2.30
169	KARNAL	KARNAL	S-NPP	76.83292	29.59098	13:36	D	2.50
170	KARNAL	KARNAL	S-NPP	76.83113	29.60141	13:36	D	2.20
171	KARNAL	KARNAL	S-NPP	76.86143	29.61330	13:36	D	1.80
172	KARNAL	KARNAL	S-NPP	76.85202	29.61563	13:36	D	4.70
173	KARNAL	KARNAL	S-NPP	76.88676	29.62371	13:36	D	2.10
174	KARNAL	KARNAL	S-NPP	76.82320	29.62611	13:36	D	7.30
175	KARNAL	KARNAL	S-NPP	76.81819	29.62901	13:36	D	23.20
176	KARNAL	KARNAL	S-NPP	76.82260	29.62958	13:36	D	9.30
177	KARNAL	KARNAL	S-NPP	76.81320	29.63190	13:36	D	23.20
178	KARNAL	KARNAL	S-NPP	76.81760	29.63248	13:36	D	23.20
179	KARNAL	KARNAL	S-NPP	76.78127	29.63482	13:36	D	2.70
180	KARNAL	KARNAL	TERRA-1	76.93910	29.63755	11:07	D	8.35
181	KARNAL	KARNAL	S-NPP	76.86491	29.64579	13:36	D	7.70
182	KARNAL	KARNAL	S-NPP	76.80582	29.64871	13:36	D	2.20
183	KARNAL	KARNAL	S-NPP	76.85928	29.65218	13:36	D	5.60
184	KARNAL	KARNAL	S-NPP	76.85869	29.65566	13:36	D	4.00
185	KARNAL	KARNAL	S-NPP	77.09532	29.65779	13:36	D	2.00
186	KARNAL	KARNAL	S-NPP	76.88964	29.65973	13:36	D	2.20
187	KARNAL	KARNAL	S-NPP	76.74402	29.66893	13:36	D	3.10

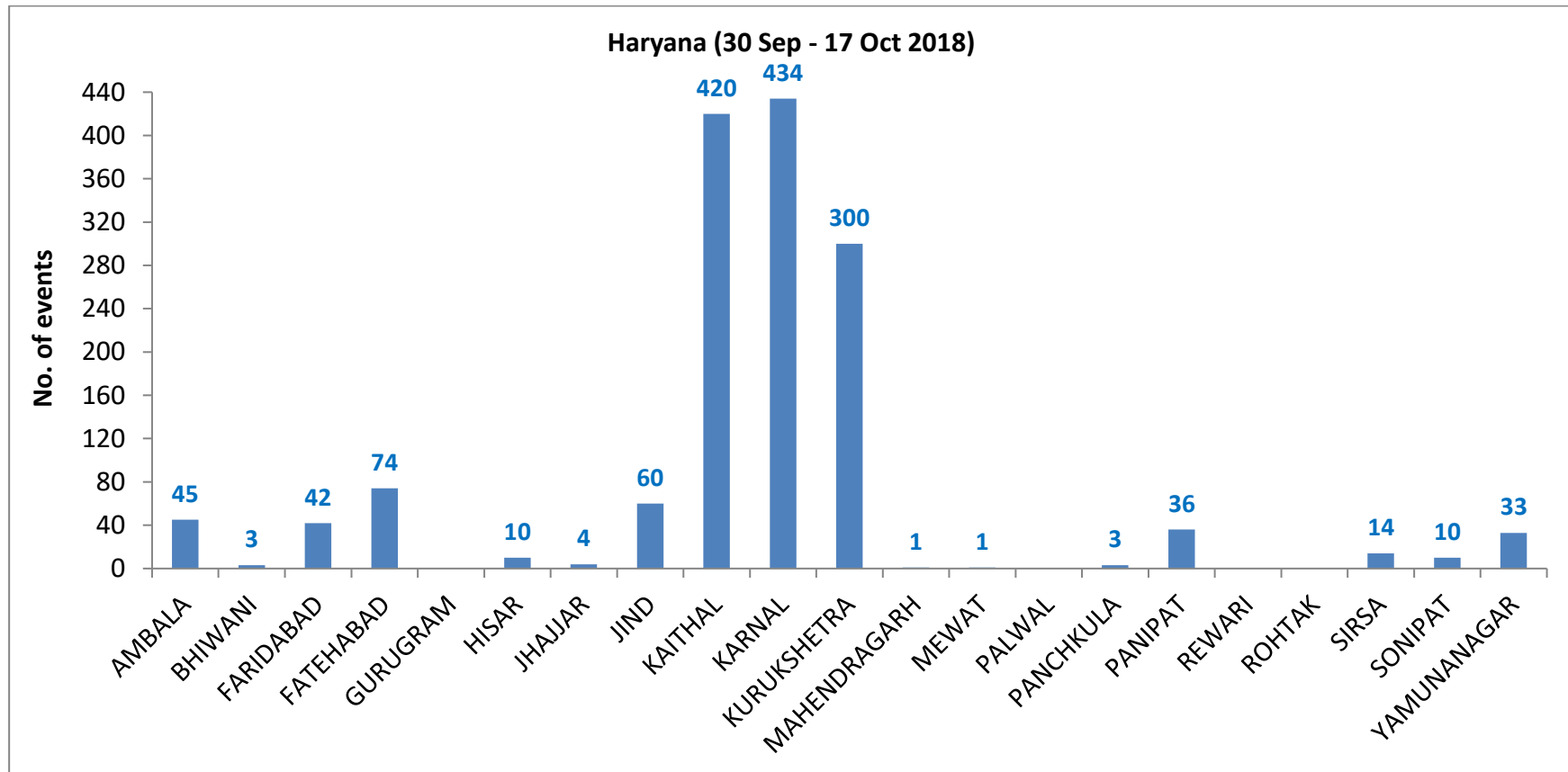
188	KARNAL	KARNAL	S-NPP	76.82365	29.67596	13:36	D	12.50
189	KARNAL	KARNAL	S-NPP	77.02769	29.67775	13:36	D	4.50
190	KARNAL	KARNAL	S-NPP	76.88369	29.69460	13:36	D	2.70
191	KARNAL	KARNAL	S-NPP	76.71765	29.70248	13:36	D	3.20
192	KARNAL	KARNAL	TERRA-1	76.88794	29.71840	11:07	D	8.74
193	KARNAL	KARNAL	S-NPP	76.83780	29.73593	13:36	D	2.90
194	KARNAL	KARNAL	S-NPP	76.82837	29.73825	13:36	D	2.70
195	KARNAL	KARNAL	S-NPP	77.00934	29.74384	13:36	D	2.20
196	KARNAL	KARNAL	S-NPP	77.01836	29.79877	13:36	D	3.90
197	KARNAL	KARNAL	S-NPP	77.01209	29.80870	13:36	D	4.70
198	KARNAL	NILOKHERI	S-NPP	76.94137	29.76726	13:36	D	2.10
199	KARNAL	NILOKHERI	S-NPP	76.86341	29.77134	13:36	D	3.20
200	KARNAL	NILOKHERI	S-NPP	76.86784	29.77192	13:36	D	3.20
201	KARNAL	NILOKHERI	S-NPP	76.92235	29.82553	13:36	D	2.60
202	KARNAL	NILOKHERI	S-NPP	76.88646	29.82831	13:36	D	2.40
203	KARNAL	NILOKHERI	S-NPP	76.77471	29.84586	13:36	D	2.40
204	KARNAL	NILOKHERI	S-NPP	76.74788	29.87077	13:36	D	2.70
205	KURUKSHETRA	PEHOWA	S-NPP	76.48782	29.90885	13:36	D	3.80
206	KURUKSHETRA	PEHOWA	S-NPP	76.55351	29.91402	13:36	D	3.90
207	KURUKSHETRA	PEHOWA	S-NPP	76.65770	29.93129	13:36	D	3.10
208	KURUKSHETRA	PEHOWA	S-NPP	76.63082	29.93130	13:36	D	10.20
209	KURUKSHETRA	PEHOWA	S-NPP	76.68285	29.94169	13:36	D	2.80
210	KURUKSHETRA	PEHOWA	S-NPP	76.65291	29.95902	13:36	D	3.10
211	KURUKSHETRA	PEHOWA	S-NPP	76.69065	29.97466	13:36	D	3.40
212	KURUKSHETRA	PEHOWA	S-NPP	76.63616	29.97807	13:36	D	8.00
213	KURUKSHETRA	PEHOWA	S-NPP	76.69005	29.97813	13:36	D	3.00
214	KURUKSHETRA	PEHOWA	S-NPP	76.52407	29.98074	13:36	D	6.00
215	KURUKSHETRA	PEHOWA	S-NPP	76.56073	30.00483	13:36	D	2.10
216	KURUKSHETRA	PEHOWA	S-NPP	76.68025	30.00879	13:36	D	9.50
217	KURUKSHETRA	PEHOWA	S-NPP	76.59071	30.01230	13:36	D	2.00
218	KURUKSHETRA	PEHOWA	S-NPP	76.58575	30.01518	13:36	D	2.40
219	KURUKSHETRA	PEHOWA	S-NPP	76.53096	30.02211	13:36	D	6.90

220	KURUKSHETRA	PEHOWA	S-NPP	76.43558	30.03413	13:36	D	4.40
221	KURUKSHETRA	PEHOWA	S-NPP	76.59404	30.04460	13:36	D	2.50
222	KURUKSHETRA	PEHOWA	S-NPP	76.45553	30.07206	13:36	D	1.80
223	KURUKSHETRA	PEHOWA	S-NPP	76.75690	30.11944	13:36	D	1.40
224	KURUKSHETRA	PEHOWA	S-NPP	76.70694	30.13176	13:36	D	9.90
225	KURUKSHETRA	PEHOWA	S-NPP	76.74948	30.14796	13:36	D	3.10
226	KURUKSHETRA	SHAHABAD	S-NPP	76.80351	30.15139	13:36	D	3.00
227	KURUKSHETRA	SHAHABAD	S-NPP	76.89850	30.18511	13:36	D	5.60
228	KURUKSHETRA	SHAHABAD	S-NPP	76.84342	30.18514	13:36	D	5.00
229	KURUKSHETRA	SHAHABAD	S-NPP	76.88320	30.19388	13:36	D	3.00
230	KURUKSHETRA	SHAHABAD	S-NPP	76.88770	30.19446	13:36	D	4.20
231	KURUKSHETRA	SHAHABAD	S-NPP	76.87302	30.19971	13:36	D	2.80
232	KURUKSHETRA	THANESAR	S-NPP	76.78461	29.89342	13:36	D	1.40
233	KURUKSHETRA	THANESAR	S-NPP	76.90720	29.92033	13:36	D	2.30
234	KURUKSHETRA	THANESAR	S-NPP	76.80698	29.92132	13:36	D	2.30
235	KURUKSHETRA	THANESAR	S-NPP	76.82397	29.93520	13:36	D	3.30
236	KURUKSHETRA	THANESAR	S-NPP	76.82271	29.99566	13:36	D	18.20
237	KURUKSHETRA	THANESAR	S-NPP	76.82211	29.99915	13:36	D	18.20
238	KURUKSHETRA	THANESAR	S-NPP	76.74939	30.00023	13:36	D	4.00
239	KURUKSHETRA	THANESAR	S-NPP	76.76529	30.01302	13:36	D	3.30
240	KURUKSHETRA	THANESAR	S-NPP	76.79691	30.01365	13:36	D	3.20
241	KURUKSHETRA	THANESAR	S-NPP	76.71989	30.01409	13:36	D	2.50
242	KURUKSHETRA	THANESAR	S-NPP	76.78301	30.01537	13:36	D	2.60
243	KURUKSHETRA	THANESAR	S-NPP	77.07613	30.01796	13:36	D	2.30
244	KURUKSHETRA	THANESAR	S-NPP	76.71578	30.04285	13:36	D	4.20
245	KURUKSHETRA	THANESAR	TERRA-1	76.72594	30.04928	11:07	D	10.52
246	KURUKSHETRA	THANESAR	S-NPP	76.82227	30.05670	13:36	D	2.10
247	KURUKSHETRA	THANESAR	S-NPP	76.74373	30.06429	13:36	D	3.30
248	KURUKSHETRA	THANESAR	S-NPP	76.79521	30.08172	13:36	D	2.10
249	KURUKSHETRA	THANESAR	S-NPP	76.88122	30.08579	13:36	D	4.60
250	KURUKSHETRA	THANESAR	TERRA-1	76.77539	30.08671	11:07	D	6.41
251	KURUKSHETRA	THANESAR	S-NPP	76.87166	30.08813	13:36	D	8.70

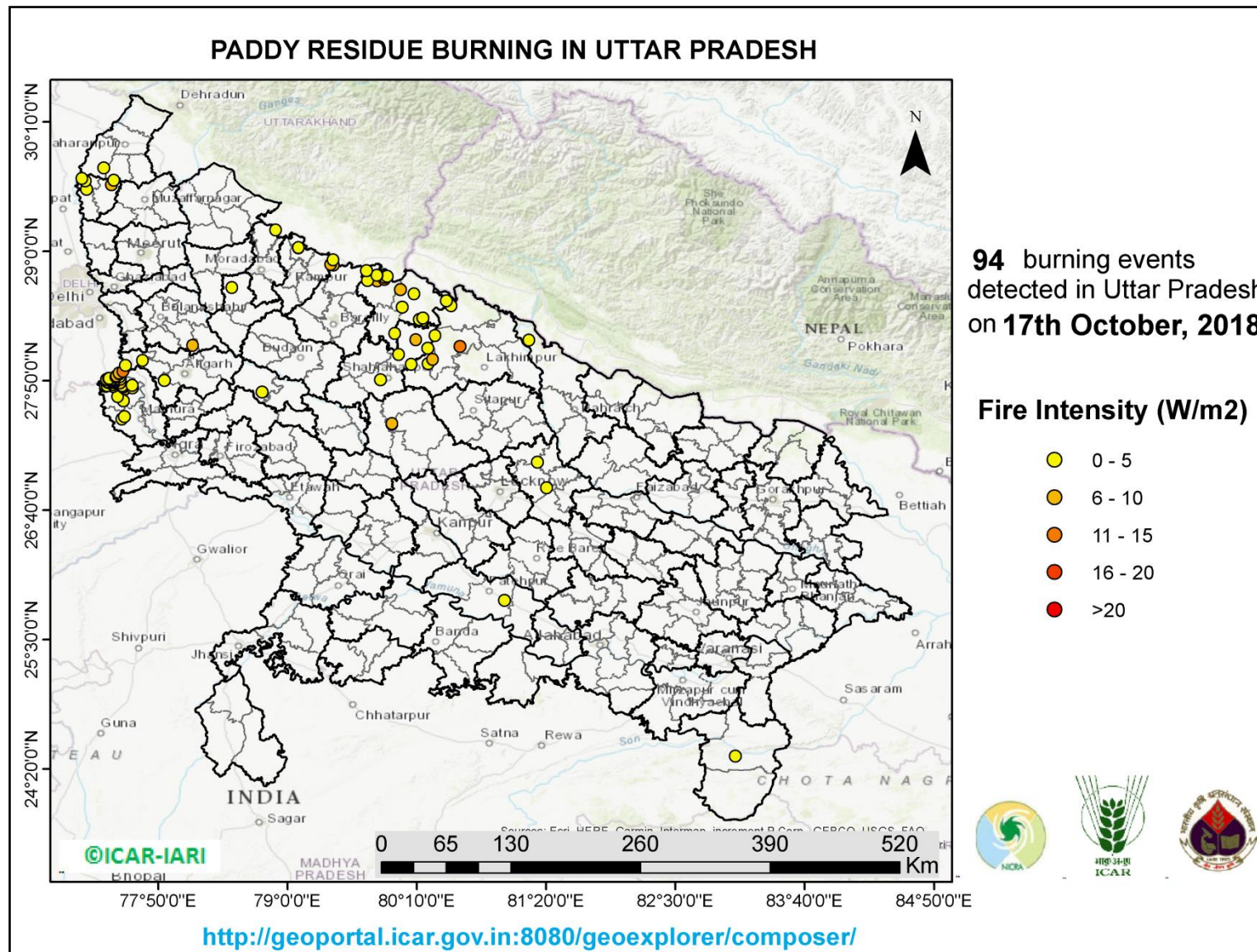
252	KURUKSHETRA	THANESAR	S-NPP	76.88062	30.08929	13:36	D	8.00
253	KURUKSHETRA	THANESAR	S-NPP	76.77083	30.11773	13:36	D	2.00
254	KURUKSHETRA	THANESAR	S-NPP	77.02857	30.14084	13:36	D	2.20
255	SIRSA	RANIA	S-NPP	74.77740	29.50441	13:36	D	6.10
256	SIRSA	RANIA	S-NPP	74.76486	29.50596	13:36	D	3.80
257	SIRSA	RANIA	S-NPP	74.90860	29.56695	13:36	D	5.90
258	SIRSA	RANIA	S-NPP	74.91340	29.58469	13:36	D	2.10
259	SIRSA	RANIA	S-NPP	74.63757	29.60501	02:18	N	0.50
260	SIRSA	SIRSA	S-NPP	75.15096	29.56589	13:36	D	2.50
261	SONIPAT	SONIPAT	S-NPP	77.08878	29.08612	13:36	D	3.20
262	SONIPAT	SONIPAT	S-NPP	76.84930	29.13017	13:36	D	2.50
263	YAMUNANAGAR	CHHACHHRAULII	S-NPP	77.46324	30.27510	13:36	D	2.60
264	YAMUNANAGAR	CHHACHHRAULII	S-NPP	77.45613	30.28887	13:36	D	2.60
265	YAMUNANAGAR	JAGADHRI	S-NPP	77.17229	29.97255	13:36	D	2.90
266	YAMUNANAGAR	JAGADHRI	S-NPP	77.08619	30.04088	13:36	D	3.00
267	YAMUNANAGAR	JAGADHRI	TERRA-1	77.19318	30.33075	11:07	D	8.57
268	YAMUNANAGAR	JAGADHRI	S-NPP	77.38226	30.33568	13:36	D	3.20



**District-wise cumulative number of residue burning events in Haryana (30-Sep-2018 to 17-Oct-2018)**



### (c) Uttar Pradesh



**Details of residue burning events in Uttar Pradesh on 17-Oct-2018**

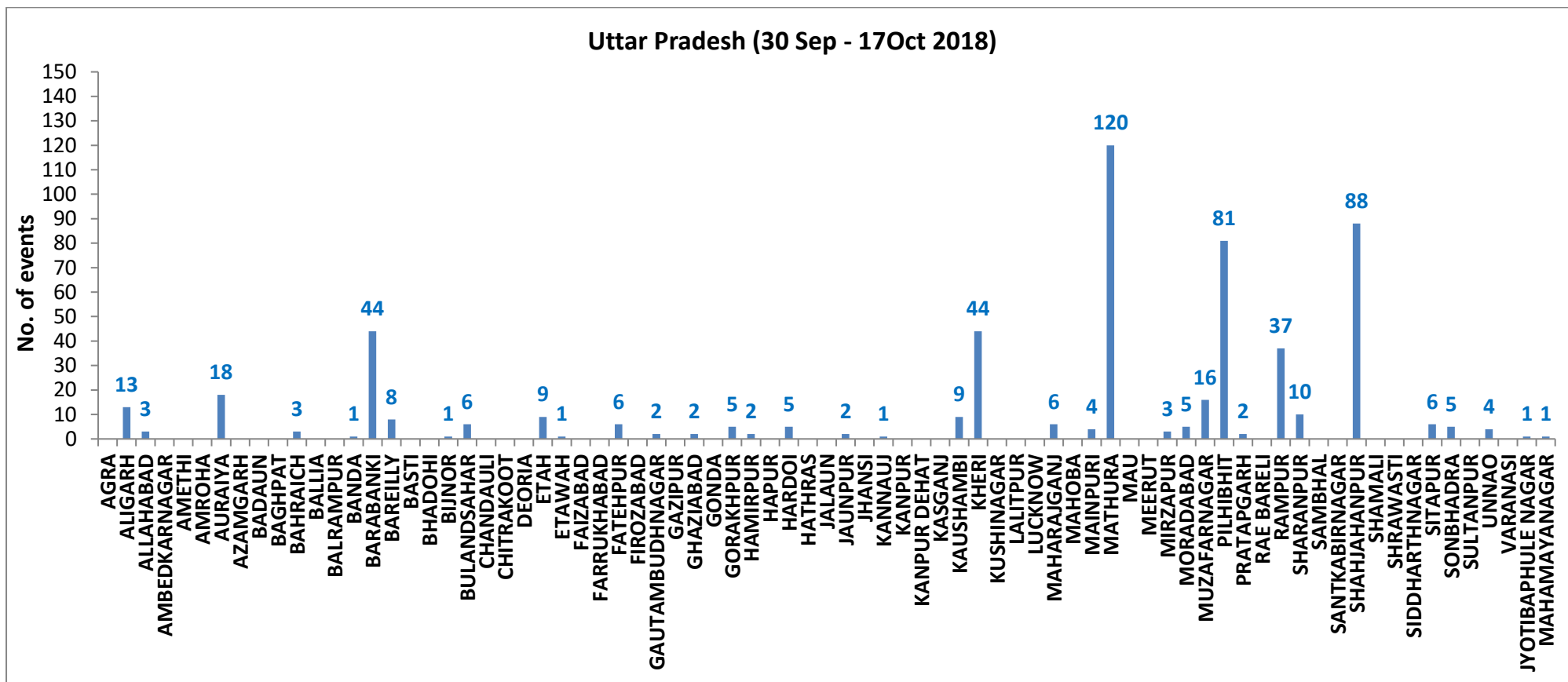
<b>Event S. No.</b>	<b>District</b>	<b>Tehsil/Block</b>	<b>Satellite</b>	<b>Longitude</b>	<b>Latitude</b>	<b>Time (IST)</b>	<b>Day/Night</b>	<b>Fire Power (W/m<sup>2</sup>)</b>
1	ALIGARH	IGLAS	S-NPP	77.88836	27.83740	13:36:00	D	2.80
2	ALIGARH	KHAIR	S-NPP	77.53765	27.97191	13:36:00	D	2.30
3	ALIGARH	KHAIR	S-NPP	77.69128	28.01641	13:36:00	D	2.50
4	BAHRAICH	NANPARA	S-NPP	81.17834	28.19896	13:36:00	D	4.10
5	BARABANKI	FATEHPUR	S-NPP	81.25444	27.09907	13:36:00	D	3.60
6	BARABANKI	NAWABGANJ	S-NPP	81.33551	26.86844	13:36:00	D	2.10
7	BAREILLY	BAHERI	S-NPP	79.41438	28.87599	13:36:00	D	7.50
8	BULANDSAHAR	SHIKARPUR	S-NPP	78.14516	28.15129	13:36:00	D	6.20
9	ETAH	KASGANJ	S-NPP	78.77010	27.73236	13:36:00	D	4.30
10	FATEHPUR	FATEHPUR	S-NPP	80.95692	25.85288	13:36:00	D	1.30
11	HARDOI	HARDOI	S-NPP	79.94252	27.44154	13:36:00	D	7.30
12	HARDOI	HARDOI	S-NPP	79.94196	27.44549	13:36:00	D	7.30
13	KHERI	GOLA	S-NPP	80.55753	28.14269	13:36:00	D	10.30
14	KHERI	GOLA	S-NPP	80.33174	28.24194	13:36:00	D	3.40
15	KHERI	MOHMADI	S-NPP	80.26721	27.98821	13:36:00	D	2.10
16	KHERI	MOHMADI	S-NPP	80.31092	28.02594	13:36:00	D	6.80
17	KHERI	MOHMADI	S-NPP	80.26400	28.12744	13:36:00	D	3.30
18	KHERI	PALIA KALAN	S-NPP	80.47623	28.50884	13:36:00	D	4.10
19	KHERI	PALIA KALAN	S-NPP	80.43221	28.55211	13:36:00	D	1.10
20	MATHURA	CHHATA	S-NPP	77.51944	27.65370	13:36:00	D	3.10
21	MATHURA	CHHATA	S-NPP	77.46863	27.69002	13:36:00	D	2.50
22	MATHURA	CHHATA	S-NPP	77.53440	27.75947	13:36:00	D	6.60
23	MATHURA	CHHATA	S-NPP	77.53354	27.75954	13:36:00	D	5.40
24	MATHURA	CHHATA	S-NPP	77.60085	27.76802	13:36:00	D	1.40
25	MATHURA	CHHATA	S-NPP	77.51386	27.77474	13:36:00	D	5.10
26	MATHURA	CHHATA	S-NPP	77.42750	27.78136	13:36:00	D	4.60
27	MATHURA	CHHATA	S-NPP	77.35592	27.78265	13:36:00	D	2.70
28	MATHURA	CHHATA	S-NPP	77.35535	27.78613	13:36:00	D	2.70

29	MATHURA	CHHATA	S-NPP	77.50714	27.78821	13:36:00	D	3.80
30	MATHURA	CHHATA	S-NPP	77.37276	27.78844	13:36:00	D	3.90
31	MATHURA	CHHATA	S-NPP	77.59683	27.79269	13:36:00	D	1.70
32	MATHURA	CHHATA	S-NPP	77.42461	27.79886	13:36:00	D	3.70
33	MATHURA	CHHATA	S-NPP	77.44917	27.81283	13:36:00	D	3.40
34	MATHURA	CHHATA	S-NPP	77.39548	27.81287	13:36:00	D	6.30
35	MATHURA	CHHATA	S-NPP	77.48931	27.81454	13:36:00	D	5.50
36	MATHURA	CHHATA	S-NPP	77.39927	27.81694	13:36:00	D	6.40
37	MATHURA	CHHATA	S-NPP	77.43047	27.81751	13:36:00	D	23.10
38	MATHURA	CHHATA	TERRA-1	77.44300	27.82071	11:07:00	D	11.76
39	MATHURA	CHHATA	S-NPP	77.37627	27.82103	13:36:00	D	3.00
40	MATHURA	CHHATA	S-NPP	77.38064	27.82161	13:36:00	D	3.00
41	MATHURA	CHHATA	S-NPP	77.43370	27.82509	13:36:00	D	6.50
42	MATHURA	CHHATA	S-NPP	77.43312	27.82859	13:36:00	D	10.10
43	MATHURA	CHHATA	S-NPP	77.42378	27.83093	13:36:00	D	8.50
44	MATHURA	CHHATA	S-NPP	77.41008	27.83268	13:36:00	D	7.00
45	MATHURA	CHHATA	S-NPP	77.39638	27.83442	13:36:00	D	3.80
46	MATHURA	CHHATA	S-NPP	77.42643	27.84201	13:36:00	D	6.10
47	MATHURA	CHHATA	S-NPP	77.36787	27.84489	13:36:00	D	9.90
48	MATHURA	CHHATA	S-NPP	77.36513	27.84536	13:36:00	D	8.70
49	MATHURA	CHHATA	S-NPP	77.49293	27.84729	13:36:00	D	3.00
50	MATHURA	CHHATA	S-NPP	77.42090	27.84843	13:36:00	D	5.20
51	MATHURA	CHHATA	S-NPP	77.44778	27.84844	13:36:00	D	1.90
52	MATHURA	CHHATA	S-NPP	77.41821	27.84868	13:36:00	D	5.00
53	MATHURA	CHHATA	S-NPP	77.38582	27.85519	13:36:00	D	2.60
54	MATHURA	CHHATA	S-NPP	77.39019	27.85576	13:36:00	D	2.40
55	MATHURA	CHHATA	S-NPP	77.45103	27.86725	13:36:00	D	2.80
56	MATHURA	CHHATA	S-NPP	77.48627	27.87182	13:36:00	D	3.70
57	MATHURA	CHHATA	TERRA-1	77.45920	27.87536	11:07:00	D	7.14
58	MATHURA	CHHATA	S-NPP	77.48222	27.89639	13:36:00	D	3.60
59	MATHURA	CHHATA	S-NPP	77.48106	27.90341	13:36:00	D	6.10
60	MATHURA	CHHATA	S-NPP	77.51471	27.91858	13:36:00	D	11.40

61	MATHURA	MATHURA	S-NPP	77.50471	27.48659	13:36:00	D	4.50
62	MATHURA	MATHURA	S-NPP	77.52750	27.51107	13:36:00	D	4.60
63	MORADABAD	SAMBHAL	S-NPP	78.49890	28.67308	13:36:00	D	2.30
64	MORADABAD	THAKUR DWARA	S-NPP	78.89268	29.19075	02:18:00	N	3.00
65	MUZAFARNAGAR	KAIRANA	S-NPP	77.18481	29.55825	13:36:00	D	1.60
66	MUZAFARNAGAR	KAIRANA	S-NPP	77.17181	29.63578	13:36:00	D	2.70
67	MUZAFARNAGAR	KAIRANA	S-NPP	77.14615	29.65711	13:36:00	D	1.90
68	MUZAFARNAGAR	SHAMLI	TERRA-1	77.41145	29.60012	11:07:00	D	6.81
69	MUZAFARNAGAR	SHAMLI	S-NPP	77.43283	29.64062	13:36:00	D	3.70
70	PILHIBHIT	BISALPUR	S-NPP	79.96813	28.25971	13:36:00	D	4.10
71	PILHIBHIT	PILHIBHIT	S-NPP	79.81001	28.73474	13:36:00	D	7.00
72	PILHIBHIT	PILHIBHIT	S-NPP	79.72147	28.73680	13:36:00	D	2.10
73	PILHIBHIT	PILHIBHIT	S-NPP	79.87376	28.74596	13:36:00	D	11.90
74	PILHIBHIT	PILHIBHIT	S-NPP	79.87681	28.76661	13:36:00	D	5.30
75	PILHIBHIT	PILHIBHIT	S-NPP	79.89977	28.77328	13:36:00	D	4.70
76	PILHIBHIT	PILHIBHIT	S-NPP	79.80907	28.78318	13:36:00	D	6.90
77	PILHIBHIT	PILHIBHIT	S-NPP	79.80684	28.78488	13:36:00	D	3.40
78	PILHIBHIT	PILHIBHIT	S-NPP	79.71236	28.82686	13:36:00	D	3.60
79	PILHIBHIT	PURANPUR	S-NPP	80.21826	28.37732	13:36:00	D	2.80
80	PILHIBHIT	PURANPUR	S-NPP	80.18842	28.38631	13:36:00	D	3.80
81	PILHIBHIT	PURANPUR	S-NPP	80.21951	28.39807	13:36:00	D	3.80
82	PILHIBHIT	PURANPUR	S-NPP	80.03507	28.49699	13:36:00	D	3.60
83	PILHIBHIT	PURANPUR	S-NPP	80.14052	28.61549	13:36:00	D	1.00
84	PILHIBHIT	PURANPUR	S-NPP	80.01708	28.65527	13:36:00	D	8.80
85	RAMPUR	BILASPUR	S-NPP	79.39094	28.88125	13:36:00	D	7.10
86	RAMPUR	BILASPUR	S-NPP	79.41309	28.92343	13:36:00	D	5.00
87	RAMPUR	SUAR	S-NPP	79.09724	29.03043	13:36:00	D	2.80
88	RAMPUR	SUAR	S-NPP	79.09871	29.03303	13:36:00	D	3.50
89	SHAHJAHANPUR	PUWANYA	S-NPP	80.11533	27.97980	13:36:00	D	4.30
90	SHAHJAHANPUR	PUWANYA	S-NPP	80.00413	28.07017	13:36:00	D	3.40
91	SHAHJAHANPUR	PUWANYA	S-NPP	80.15738	28.20227	13:36:00	D	7.00
92	SHAHJAHANPUR	SHAHJAHANPUR	S-NPP	79.83689	27.84166	13:36:00	D	3.50

93	SHARANPUR	NAKUR	S-NPP	77.34030	29.75067	13:36:00	D	2.60
94	SONBHADRA	REBUTSHGANJ	S-NPP	83.04096	24.44965	02:18:00	N	0.70

**District-wise cumulative number of residue burning events in Uttar Pradesh (30-Sep-2018 to 17-Oct-2018)**



**State wise, date wise and district-wise number of residue burning events detected in 2017 and 2018**  
**(Period: 30-Sep-2018 to 17-Oct-2018)**

Date	Punjab		Haryana		UP		Total	
	2017	2018	2017	2018	2017	2018	2017	2018
<b>30-Sep-18</b>	--	11	---	7	---	13	---	31
<b>1-Oct-18</b>	54	16	13	9	2	11	69	36
<b>2-Oct-18</b>	50	9	27	23	8	21	85	53
<b>3-Oct-18</b>	62	4	40	9	17	12	119	25
<b>4-Oct-18</b>	103	32	60	16	22	5	185	53
<b>5-Oct-18</b>	106	56	68	30	20	10	194	96
<b>6-Oct-18</b>	138	87	75	65	39	13	252	165
<b>7-Oct-18</b>	105	162	97	180	31	69	233	411
<b>8-Oct-18</b>	215	39	218	40	75	54	508	133
<b>9-Oct-18</b>	163	75	148	47	87	32	398	154
<b>10-Oct-18</b>	164	23	151	37	126	21	441	81
<b>11-Oct-18</b>	177	30	87	78	74	24	338	132
<b>12-Oct-18</b>	342	67	123	133	51	22	516	222
<b>13-Oct-18</b>	470	62	207	147	69	61	746	270
<b>14-Oct-18</b>	582	112	333	153	137	57	1052	322
<b>15-Oct-18</b>	943	90	458	110	237	35	1638	235
<b>16-Oct-18</b>	465	174	186	138	71	20	722	332
<b>17-Oct-18</b>	807	272	244	268	69	94	1120	634
<b>Total</b>	<b>4946</b>	<b>1321</b>	<b>2535</b>	<b>1490</b>	<b>1139</b>	<b>574</b>	<b>8620</b>	<b>3385</b>

**(a) Punjab**

Districts	01 - 17 Oct	
	2017	2018
AMRITSAR	532	465
BARNALA	15	4
BATHINDA	356	29
FARIDKOT	717	39
FATEHGARH SAHIB	174	19
FAZILKA	0	0
FIROZPUR	588	95
GURDASPUR	137	57
HOSHIARPUR	21	3
JALANDHAR	180	10
KAPURTHALA	64	6
LUDHIANA	314	30
MANSA	92	23
MOGA	74	6
MUKTSAR	208	19
NAWASHAHR	36	5
PATHANKOT	0	0
PATIALA	573	162
RUPNAGAR	7	0
SANGRUR	182	62
SAS NAGAR	51	32
TARN TARAN	605	246
SBS NAGAR	20	9
<b>Total</b>	<b>4946</b>	<b>1321</b>

**(b) Haryana**

Districts	01 - 17 Oct	
	2017	2018
AMBALA	175	45
BHIWANI	2	3
FARIDABAD	44	42
FATEHABAD	117	74
GURUGRAM	0	0
HISAR	19	10
JHAJJAR	1	4
JIND	109	60
KAITHAL	570	420
KARNAL	793	434
KURUKSHETRA	562	300
MAHENDRAGARH	0	1
MEWAT	0	1
PALWAL	0	0
PANCHKULA	0	3
PANIPAT	31	36
REWARI	0	0
ROHTAK	1	0
SIRSA	19	14
SONIPAT	12	10
YAMUNANAGAR	80	33
<b>Total</b>	<b>2535</b>	<b>1490</b>



**(c) Uttar Pradesh**

Districts	01 - 17 Oct		FIROZABAD	0	0	PRATAPGARH	0	2
	2017	2018						
AGRA	0	0	GAZIPUR	0	0	RAMPUR	174	37
ALIGARH	14	13	GHAZIABAD	3	2	SHARANPUR	20	10
ALLAHABAD	0	3	GONDA	0	0	SAMBHAL	0	0
AMBEDKAR NAGAR	1	0	GORAKHPUR	2	5	SANTKABIR NAGAR	0	0
AMETHI	0	0	HAMIRPUR	0	2	SHAHJAHANPUR	337	88
AMROHA	0	0	HAPUR	0	0	SHAMALI	0	0
AURAIYA	44	18	HARDOI	8	5	SHRAWASTI	3	0
AZAMGARH	0	0	HATHRAS	0	0	SIDDHARTH NAGAR	1	0
BADAUN	1	0	JALAUN	0	0	SITAPUR	10	6
BAGHPAT	0	0	JAUNPUR	0	2	SONBHADRA	1	5
BAHRAICH	2	3	JHANSI	0	0	SULTANPUR	0	0
BALLIA	0	0	KANNAUJ	0	1	UNNAO	1	4
BALRAMPUR	0	0	KANPUR	3	0	VARANASI	0	0
BANDA	0	1	KANPUR DEHAT	1	0	JYOTIBAPHULE NAGAR	0	1
BARABANKI	25	44	KASGANJ	0	0	MAHAMAYA NAGAR	0	1
BAREILLY	34	8	KAUSHAMBI	4	9	Total	1139	574
BASTI	0	0	KHERI	95	44			
BHADOHI	0	0	KUSHINAGAR	1	0			
BIJNOR	0	1	LALITPUR	0	0			
BULANDSAHAR	6	6	LUCKNOW	5	0			
CHANDAULI	0	0	MAHARAJGANJ	11	6			
CHITRAKOOT	0	0	MAHOBA	0	0			
DEORIA	0	0	MAINPURI	3	4			
ETAH	4	9	MATHURA	40	120			
ETAWAH	6	1	MAU	0	0			
FAIZABAD	1	0	MEERUT	8	0			
FARRUKHABAD	0	0	MIRZAPUR	2	3			
FATEHPUR	4	6	MORADABAD	8	5			
			MUZAFARNAGAR	44	16			
			PILHIBHIT	208	81			

## The study used images received from following Satellites at IARI Satellite Ground Station

S. No.	Satellite Name	Sensor	Resolution (meter)	Day / Night Passes
1.	Suomi NPP	VIIRS	375 / 1000	Both
2.	Terra	MODIS	1000	Both
3.	Aqua	MODIS	1000	Both
4.	NOAA – 18	AVHRR	1000	Night
5.	NOAA – 19	AVHRR	1000	Night
6.	Metop - 1	AVHRR	1000	Night
7.	Metop - 2	AVHRR	1000	Night

### Study Team

ICAR – HQ	Dr K. Alagusundaram	DDG (Agril. Engg.)	<a href="mailto:ddgengg@icar.org.in">ddgengg@icar.org.in</a>
	Dr S. Bhaskar	ADG (NRM)	<a href="mailto:adgagroandaf@gmail.com">adgagroandaf@gmail.com</a>
ICAR - IARI	Dr V.K. Sehgal	Professor & Nodal Scientist	<a href="mailto:iaricreams@gmail.com">iaricreams@gmail.com</a> <a href="mailto:vk.sehgal@icar.gov.in">vk.sehgal@icar.gov.in</a>
	Dr Rajkumar Dhakar	Scientist	<a href="mailto:rajdhakar.iari@gmail.com">rajdhakar.iari@gmail.com</a>
	Shri Rakeshwar Verma	Chief Technical Officer	<a href="mailto:rakeshwar.verma@icar.gov.in">rakeshwar.verma@icar.gov.in</a>
	Mr Aakash Chhabra	SRF (NICRA)	<a href="mailto:aakash.chhabra7489@gmail.com">aakash.chhabra7489@gmail.com</a>
ICAR - ATARI	Dr Rajbir Singh	Director ATARI (Zone-1)	<a href="mailto:rajbirsingh.zpd@gmail.com">rajbirsingh.zpd@gmail.com</a>
	Dr U.S. Gautam	Director ATARI (Zone-IV)	<a href="mailto:zpdicarkanpur@gmail.com">zpdicarkanpur@gmail.com</a>
ICAR - IASRI	Dr RajenderParsad	Principal Scientist	<a href="mailto:rajender.parsad@icar.gov.in">rajender.parsad@icar.gov.in</a>

GIS Maps of fire events can be visualized online on ICAR KRISHI Geoportal

websites:<http://geoportal.icar.gov.in:8080/geoexplorer/composer/>

<http://creams.iari.res.in:8080/geoexplorer/composer/>

\*\*\*