



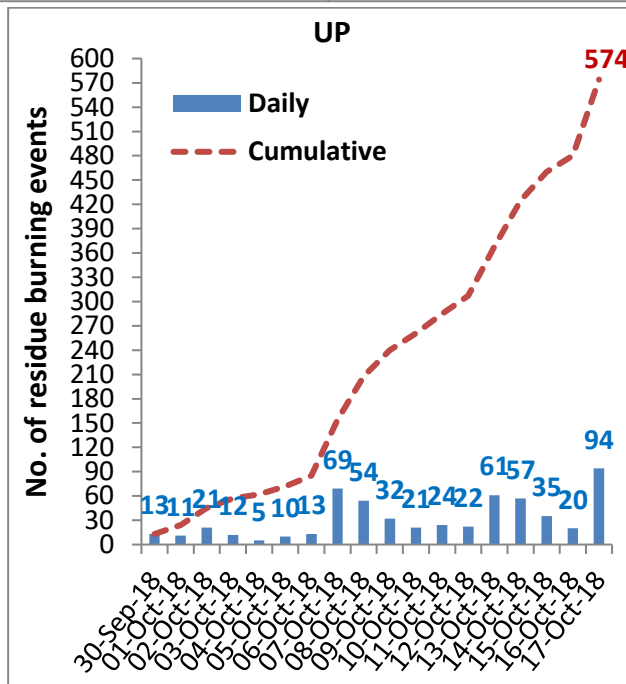
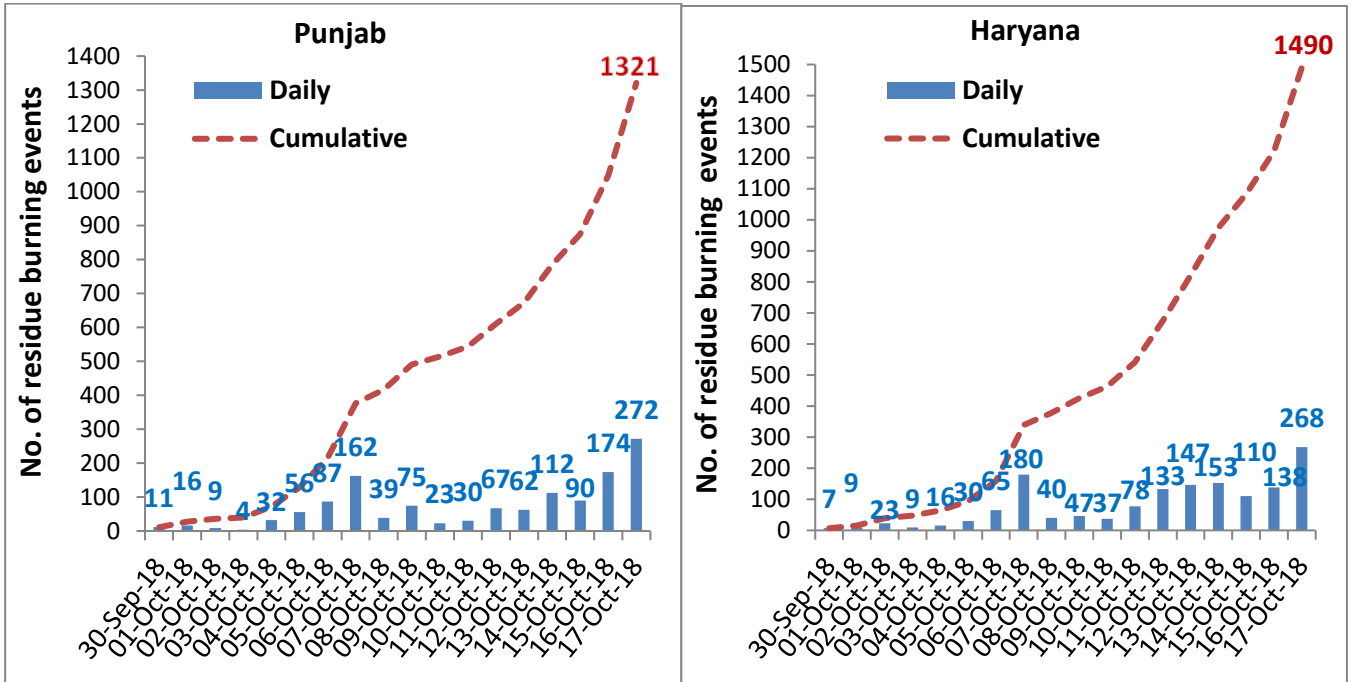
MONITORING PADDY RESIDUE BURNING IN NORTH INDIA USING SATELLITE REMOTE SENSING DURING 2018

Summary report issued on 18-Oct-2018
(Period: 30-Sep-2018 to 17-Oct-2018)

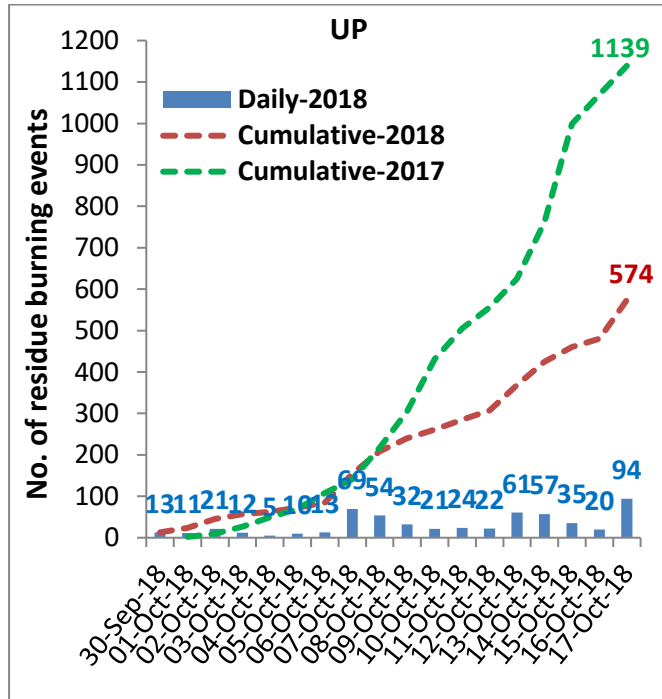
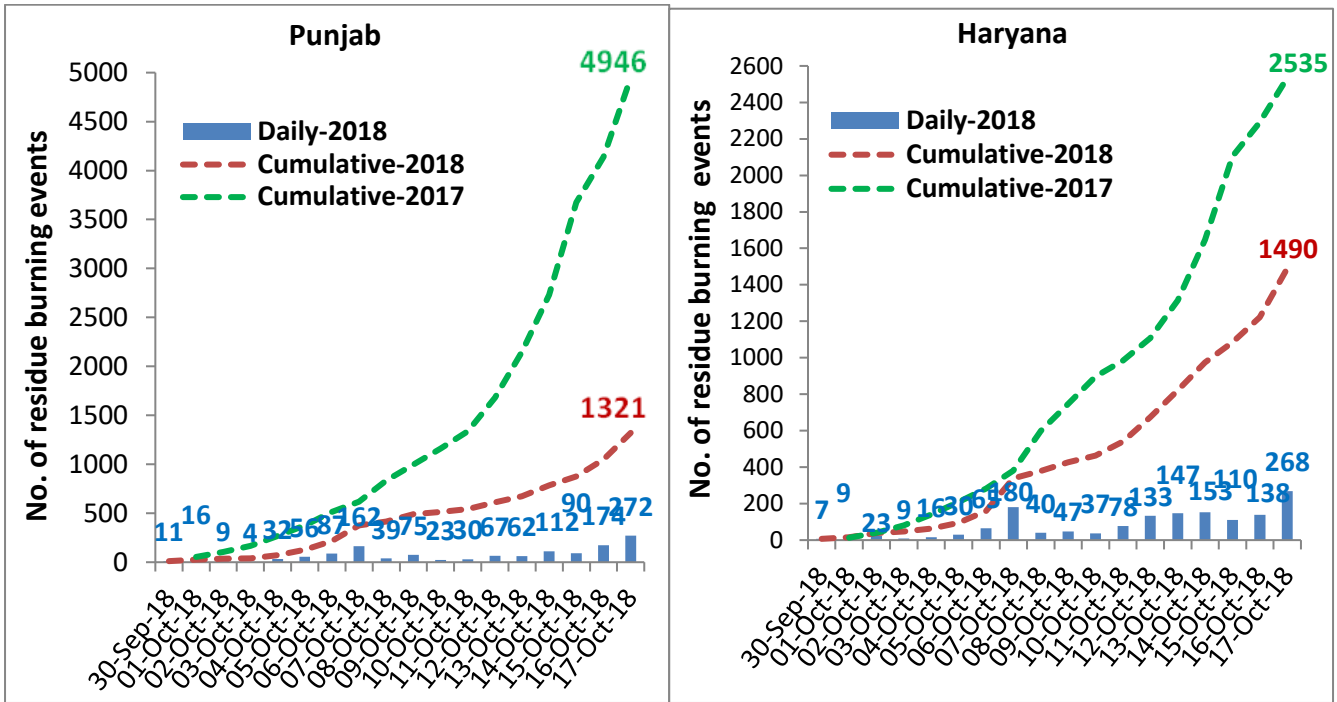
State wise and date wise number of residue burning events detected

Date	Punjab	Haryana	UP	Total
30-Sep-18	11	7	13	31
01-Oct-18	16	9	11	36
02-Oct-18	9	23	21	53
03-Oct-18	4	9	12	25
04-Oct-18	32	16	5	53
05-Oct-18	56	30	10	96
06-Oct-18	87	65	13	165
07-Oct-18	162	180	69	411
08-Oct-18	39	40	54	133
09-Oct-18	75	47	32	154
10-Oct-18	23	37	21	81
11-Oct-18	30	78	24	132
12-Oct-18	67	133	22	222
13-Oct-18	62	147	61	270
14-Oct-18	112	153	57	322
15-Oct-18	90	110	35	235
16-Oct-18	174	138	20	332
17-Oct-18	272	268	94	634
Total	1321	1490	574	3385

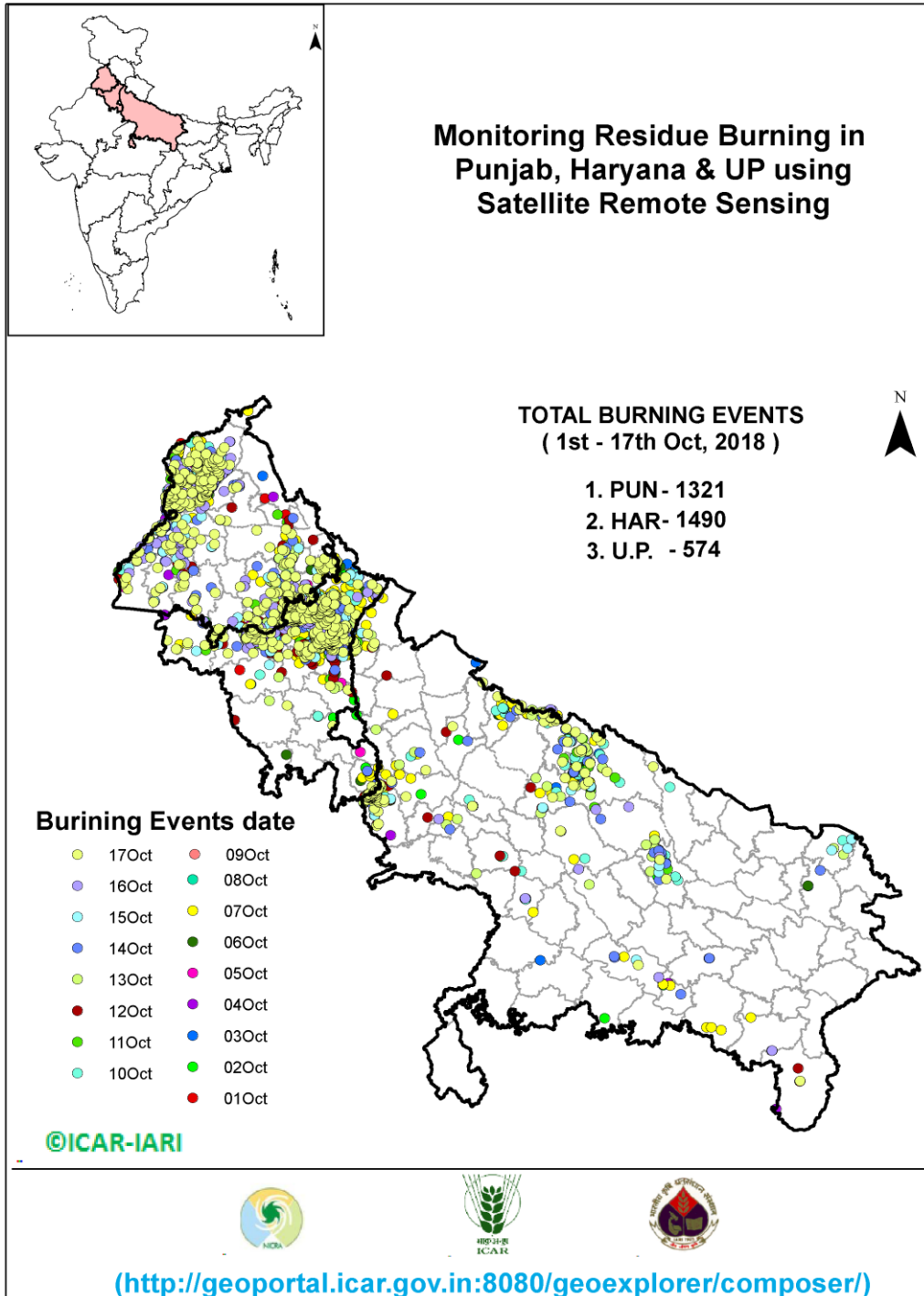
Daily and cumulative Graphs



Comparison of burning events of 2018 with events in 2017



Map of Events



Consortium for Research on Agroecosystem Monitoring and Modeling from Space (CREAMS) Laboratory,
Division of Agricultural Physics, ICAR – Indian Agricultural Research Institute, New Delhi – 110012
(Website: <http://creams.iari.res.in>) (Email: iaricreams@gmail.com)
GIS Maps of burning events can be visualized online: <http://geoportal.icar.gov.in:8080/geoexplorer/composer/>