



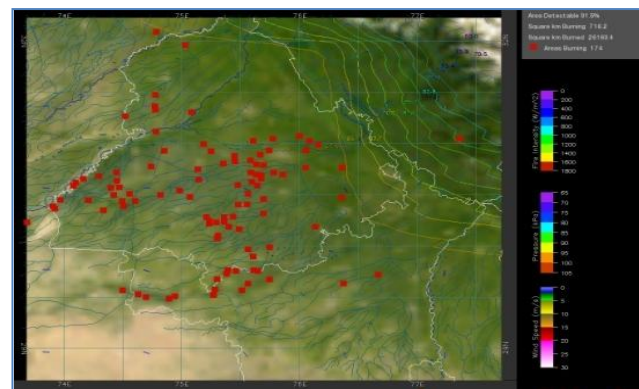
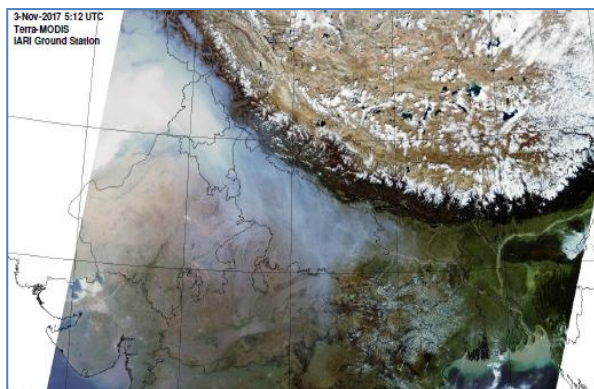
**Bulletin
No. 24**

**Events Date:
24-Oct-2018**

**Issued on:
25-Oct-2018**



MONITORING PADDY RESIDUE BURNING IN NORTH INDIA USING SATELLITE REMOTE SENSING DURING 2018



Prepared by:

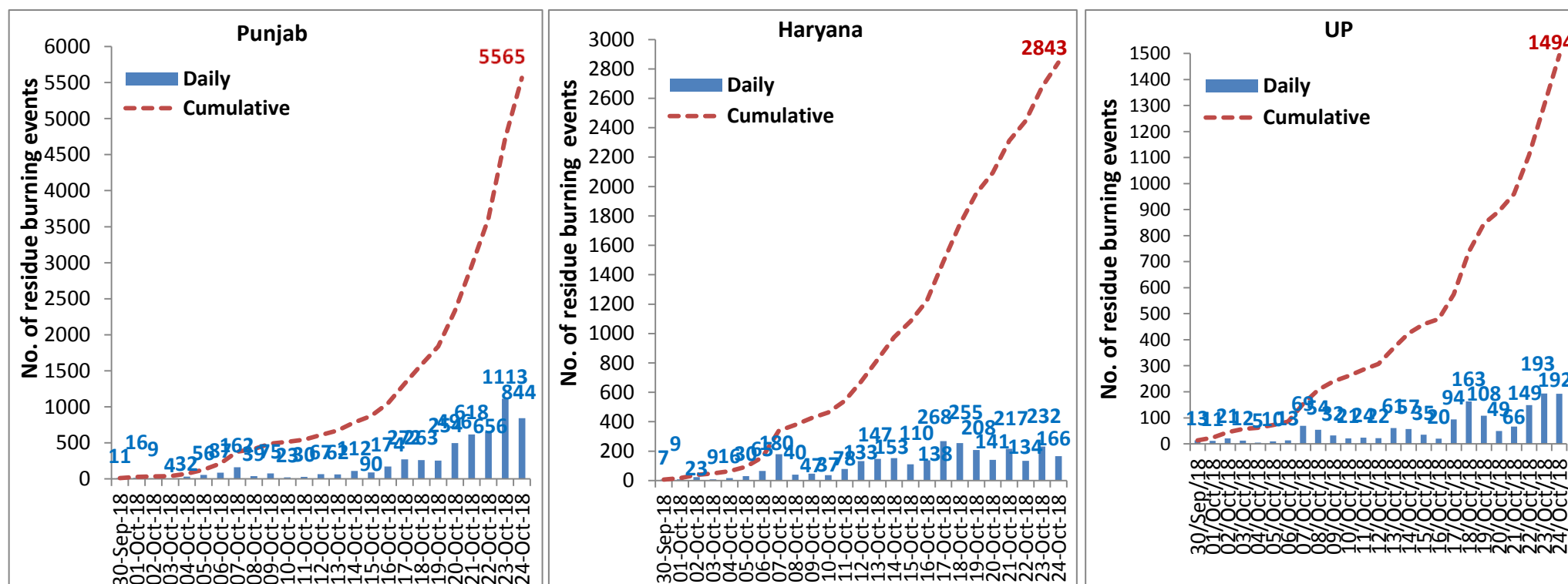
**Consortium for Research on Agroecosystem Monitoring and Modeling from Space (CREAMS) Laboratory,
Division of Agricultural Physics, ICAR – Indian Agricultural Research Institute, New Delhi – 110012**

<http://creams.iari.res.in>

Highlights for 24-October-2018

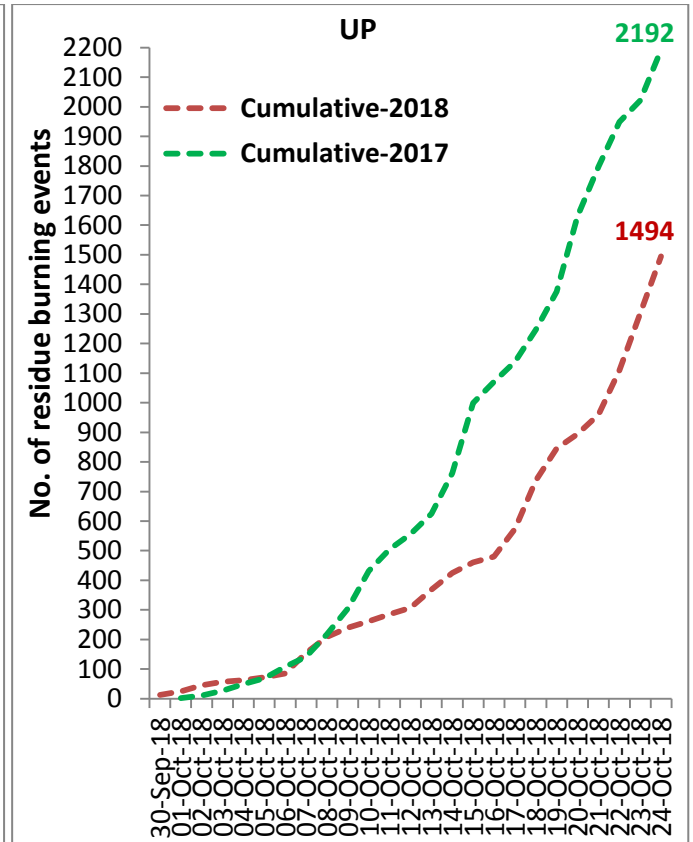
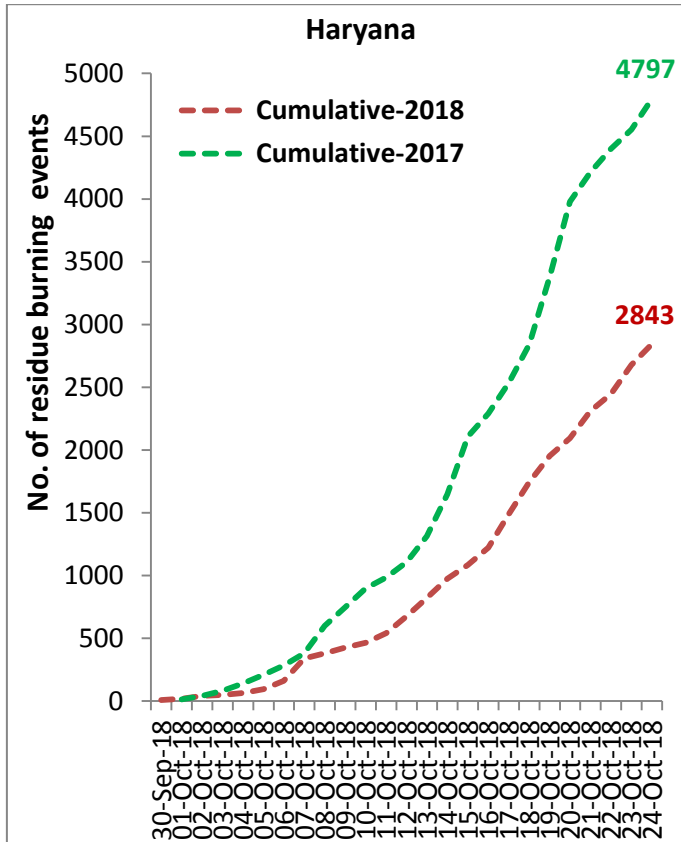
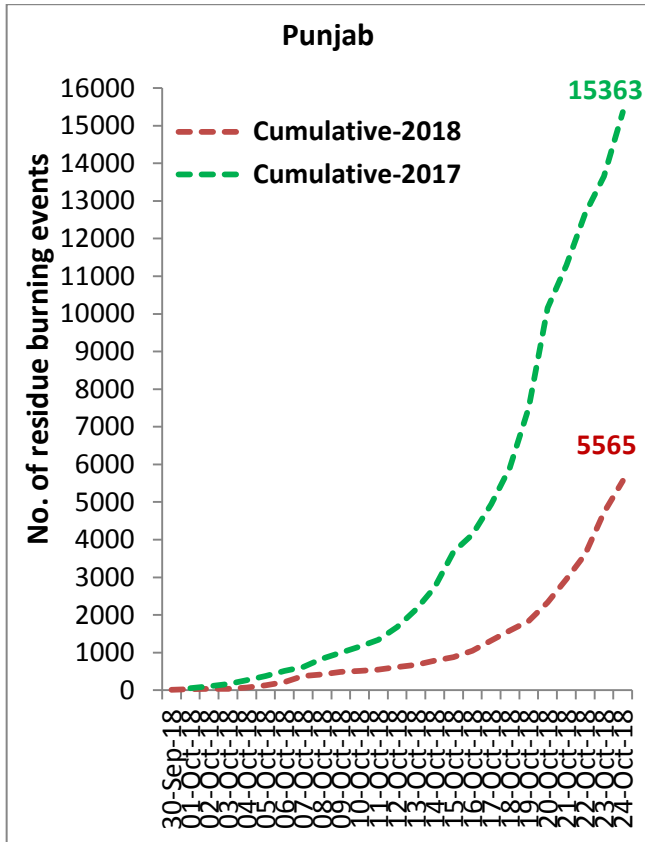
- Satellites detected 1202 residue burning events in the three States (Punjab, Haryana & UP) on 24-Oct-2018.
- The burning events detected on 24-Oct-2018 are 844, 166 and 192 in Punjab, Haryana, and UP, respectively.
- The number of events decreased from 1538 on 23-Oct-2018 to 1202 on 24-Oct-2018 in the three States.
- Total 9902 burning events were detected in the three States between 30-Sept-2018 and 24-Oct-2018, which were distributed as 5565, 2843 and 1494 in Punjab, Haryana and UP, respectively.
- Till 24-Oct-2018, the burning events in the current year are about 44.3% of the events detected in 2017.

Temporal distribution of residue burning events for the three study States



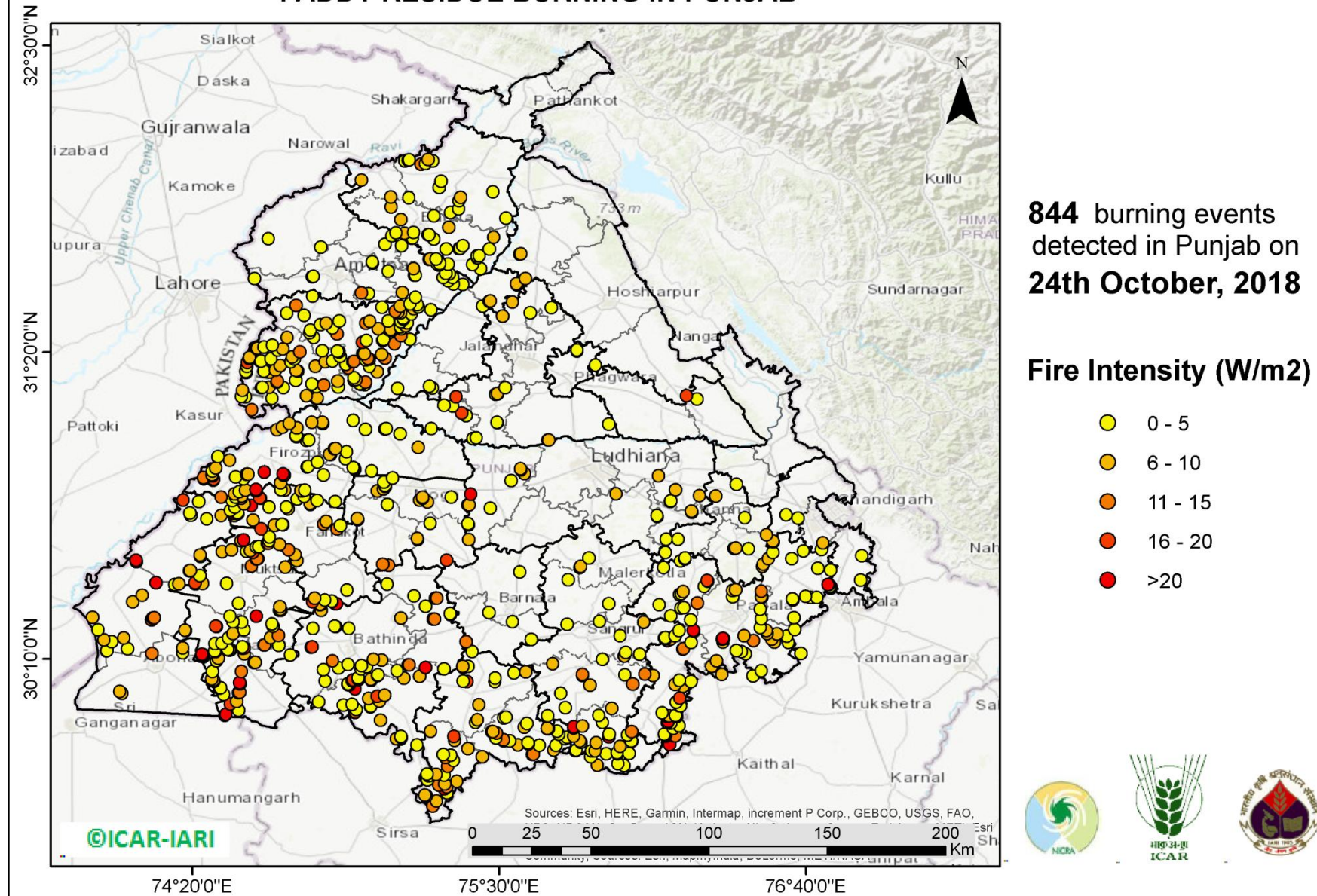
Comparison of residue burning events in current year (2018) with previous year (2017) for the three study States

(30-Sep-2018 to 24-Oct-2018)



(a) Punjab

PADDY RESIDUE BURNING IN PUNJAB



<http://geoportal.icar.gov.in:8080/geoexplorer/composer/>

Details of residue burning events in Punjab on 24-Oct-2018

Event S. No.	District	Tehsil / Block	Satellite	Longitude	Latitude	Time (IST)	Day/Night	Fire Power (W/m²)
1	AMRITSAR	AJNALA	S-NPP	74.82122	31.73256	13:06:00	D	2.80
2	AMRITSAR	AJNALA	S-NPP	74.62183	31.76482	13:06:00	D	3.40
3	AMRITSAR	AMRITSAR I	S-NPP	75.00358	31.55544	13:06:00	D	2.80
4	AMRITSAR	AMRITSAR I	S-NPP	74.97489	31.55820	13:06:00	D	10.50
5	AMRITSAR	AMRITSAR I	S-NPP	75.07734	31.64123	13:06:00	D	2.00
6	AMRITSAR	AMRITSAR I	S-NPP	75.01810	31.67220	13:06:00	D	2.40
7	AMRITSAR	AMRITSAR I	S-NPP	75.06440	31.74424	13:06:00	D	2.50
8	AMRITSAR	AMRITSAR I	S-NPP	75.09213	31.77589	13:06:00	D	3.80
9	AMRITSAR	AMRITSAR II	S-NPP	74.56841	31.61397	13:06:00	D	1.00
10	AMRITSAR	AMRITSAR II	S-NPP	74.78889	31.62018	13:06:00	D	9.20
11	AMRITSAR	AMRITSAR II	S-NPP	74.79340	31.62112	13:06:00	D	4.40
12	AMRITSAR	AMRITSAR II	S-NPP	75.01697	31.67630	13:06:00	D	4.10
13	AMRITSAR	BABA BAKALA	S-NPP	75.19100	31.50566	13:06:00	D	2.10
14	AMRITSAR	BABA BAKALA	S-NPP	75.12168	31.50875	13:06:00	D	7.20
15	AMRITSAR	BABA BAKALA	S-NPP	75.18874	31.51381	13:06:00	D	3.20
16	AMRITSAR	BABA BAKALA	S-NPP	75.16064	31.51670	13:06:00	D	4.00
17	AMRITSAR	BABA BAKALA	S-NPP	75.18085	31.54233	13:06:00	D	1.80
18	AMRITSAR	BABA BAKALA	S-NPP	75.13118	31.56024	13:06:00	D	7.20
19	AMRITSAR	BABA BAKALA	S-NPP	75.36124	31.59071	13:06:00	D	2.30
20	AMRITSAR	BABA BAKALA	S-NPP	75.36042	31.59125	13:06:00	D	2.80
21	AMRITSAR	BABA BAKALA	S-NPP	75.32541	31.59184	13:06:00	D	2.70
22	AMRITSAR	BABA BAKALA	S-NPP	75.30409	31.60452	13:06:00	D	1.80
23	AMRITSAR	BABA BAKALA	S-NPP	75.32297	31.61692	13:06:00	D	4.30
24	AMRITSAR	BABA BAKALA	S-NPP	75.28696	31.61809	13:06:00	D	2.90
25	AMRITSAR	BABA BAKALA	S-NPP	75.17678	31.62560	13:06:00	D	3.30
26	AMRITSAR	BABA BAKALA	S-NPP	75.18107	31.62647	13:06:00	D	4.90
27	AMRITSAR	BABA BAKALA	S-NPP	75.31009	31.63135	13:06:00	D	2.50
28	AMRITSAR	BABA BAKALA	S-NPP	75.29630	31.63280	13:06:00	D	4.50

29	AMRITSAR	BABA BAKALA	S-NPP	75.17429	31.65086	13:06:00	D	6.50
30	AMRITSAR	BABA BAKALA	S-NPP	75.26929	31.66575	13:06:00	D	3.60
31	AMRITSAR	BABA BAKALA	S-NPP	75.30428	31.66853	13:06:00	D	2.40
32	AMRITSAR	BABA BAKALA	S-NPP	75.26392	31.66893	13:06:00	D	1.70
33	AMRITSAR	BABA BAKALA	S-NPP	75.27241	31.67064	13:06:00	D	4.50
34	AMRITSAR	BABA BAKALA	S-NPP	75.23271	31.68642	13:06:00	D	3.40
35	AMRITSAR	BABA BAKALA	S-NPP	75.25928	31.68764	13:06:00	D	2.30
36	AMRITSAR	BABA BAKALA	S-NPP	75.12804	31.73790	13:06:00	D	2.40
37	BARNALA	BARNALA	S-NPP	75.45982	30.34256	13:06:00	D	2.90
38	BARNALA	BARNALA	S-NPP	75.57800	30.49737	13:06:00	D	4.80
39	BARNALA	TAPPA	S-NPP	75.62220	30.24004	13:06:00	D	4.40
40	BARNALA	TAPPA	S-NPP	75.55020	30.30730	13:06:00	D	1.90
41	BATHINDA	BATHINDA	S-NPP	74.83802	30.08116	13:06:00	D	2.90
42	BATHINDA	BATHINDA	S-NPP	75.01330	30.08484	13:06:00	D	10.00
43	BATHINDA	BATHINDA	S-NPP	75.01402	30.08694	13:06:00	D	16.20
44	BATHINDA	BATHINDA	S-NPP	74.96344	30.08805	13:06:00	D	18.20
45	BATHINDA	BATHINDA	S-NPP	75.01215	30.08907	13:06:00	D	10.00
46	BATHINDA	BATHINDA	S-NPP	74.96432	30.08986	13:06:00	D	15.50
47	BATHINDA	BATHINDA	S-NPP	74.96315	30.09410	13:06:00	D	3.10
48	BATHINDA	BATHINDA	S-NPP	75.03748	30.10319	13:06:00	D	4.70
49	BATHINDA	BATHINDA	S-NPP	75.03815	30.10546	13:06:00	D	4.00
50	BATHINDA	BATHINDA	S-NPP	74.83100	30.12491	13:06:00	D	4.80
51	BATHINDA	BATHINDA	S-NPP	74.97359	30.12770	13:06:00	D	4.70
52	BATHINDA	BATHINDA	S-NPP	74.88859	30.13240	13:06:00	D	2.10
53	BATHINDA	BATHINDA	S-NPP	74.99556	30.13676	13:06:00	D	4.60
54	BATHINDA	BATHINDA	S-NPP	74.97474	30.14138	13:06:00	D	4.70
55	BATHINDA	BATHINDA	S-NPP	74.92481	30.14445	13:06:00	D	2.30
56	BATHINDA	BATHINDA	S-NPP	74.86630	30.15931	13:06:00	D	14.10
57	BATHINDA	BATHINDA	S-NPP	75.05186	30.16188	13:06:00	D	8.20
58	BATHINDA	BATHINDA	S-NPP	75.02203	30.16462	13:06:00	D	8.40
59	BATHINDA	BATHINDA	S-NPP	74.78382	30.21137	13:06:00	D	19.60
60	BATHINDA	BATHINDA	S-NPP	74.78856	30.21236	13:06:00	D	19.60

61	BATHINDA	BATHINDA	S-NPP	74.79207	30.28177	13:06:00	D	3.30
62	BATHINDA	BATHINDA	S-NPP	74.92788	30.28183	13:06:00	D	2.50
63	BATHINDA	BATHINDA	S-NPP	74.87666	30.28923	13:06:00	D	4.90
64	BATHINDA	BATHINDA	S-NPP	74.87405	30.29015	13:06:00	D	4.80
65	BATHINDA	BATHINDA	S-NPP	74.82258	30.35131	13:06:00	D	7.20
66	BATHINDA	BATHINDA	S-NPP	74.81670	30.37259	13:06:00	D	5.70
67	BATHINDA	BATHINDA	S-NPP	74.82139	30.37356	13:06:00	D	4.80
68	BATHINDA	BATHINDA	S-NPP	74.81780	30.37471	13:06:00	D	7.60
69	BATHINDA	BATHINDA	S-NPP	74.87511	30.37568	13:06:00	D	10.10
70	BATHINDA	BATHINDA	S-NPP	74.87978	30.37663	13:06:00	D	46.50
71	BATHINDA	RAMPURA PHUL	S-NPP	75.28893	30.12790	13:06:00	D	5.00
72	BATHINDA	RAMPURA PHUL	TERRA-1	75.21848	30.13313	11:13:00	D	21.05
73	BATHINDA	RAMPURA PHUL	S-NPP	75.15321	30.14297	13:06:00	D	12.80
74	BATHINDA	RAMPURA PHUL	S-NPP	75.15774	30.14392	13:06:00	D	12.80
75	BATHINDA	RAMPURA PHUL	S-NPP	75.37361	30.23252	13:06:00	D	12.20
76	BATHINDA	RAMPURA PHUL	S-NPP	75.24925	30.31687	13:06:00	D	10.10
77	BATHINDA	RAMPURA PHUL	S-NPP	75.25370	30.31779	13:06:00	D	10.10
78	BATHINDA	RAMPURA PHUL	S-NPP	75.12473	30.32221	13:06:00	D	8.30
79	BATHINDA	RAMPURA PHUL	S-NPP	75.31452	30.33462	13:06:00	D	4.70
80	BATHINDA	RAMPURA PHUL	S-NPP	75.31339	30.33876	13:06:00	D	4.80
81	BATHINDA	RAMPURA PHUL	S-NPP	75.21885	30.36715	13:06:00	D	4.00
82	BATHINDA	RAMPURA PHUL	S-NPP	75.25758	30.39715	13:06:00	D	12.70
83	BATHINDA	RAMPURA PHUL	S-NPP	75.26201	30.39807	13:06:00	D	12.70
84	BATHINDA	RAMPURA PHUL	S-NPP	75.17517	30.40649	13:06:00	D	3.80
85	BATHINDA	RAMPURA PHUL	S-NPP	75.07397	30.45121	13:06:00	D	2.60
86	BATHINDA	RAMPURA PHUL	S-NPP	75.07822	30.52284	13:06:00	D	14.60
87	BATHINDA	TALWANDI SABO	S-NPP	75.18740	29.83934	13:06:00	D	3.00
88	BATHINDA	TALWANDI SABO	S-NPP	75.12338	29.86174	13:06:00	D	3.60
89	BATHINDA	TALWANDI SABO	S-NPP	75.10845	29.86313	13:06:00	D	9.20
90	BATHINDA	TALWANDI SABO	S-NPP	75.12683	29.86691	13:06:00	D	7.60
91	BATHINDA	TALWANDI SABO	S-NPP	75.12566	29.87114	13:06:00	D	2.70
92	BATHINDA	TALWANDI SABO	S-NPP	75.04820	29.93302	13:06:00	D	6.10

93	BATHINDA	TALWANDI SABO	S-NPP	74.95176	29.96243	13:06:00	D	19.80
94	BATHINDA	TALWANDI SABO	S-NPP	74.94820	29.96349	13:06:00	D	11.90
95	BATHINDA	TALWANDI SABO	S-NPP	74.95287	29.96449	13:06:00	D	11.90
96	BATHINDA	TALWANDI SABO	S-NPP	74.95522	29.97399	13:06:00	D	2.60
97	BATHINDA	TALWANDI SABO	S-NPP	75.01001	29.98337	13:06:00	D	4.70
98	BATHINDA	TALWANDI SABO	S-NPP	75.01097	29.98580	13:06:00	D	3.70
99	BATHINDA	TALWANDI SABO	S-NPP	74.90615	29.99067	13:06:00	D	4.00
100	BATHINDA	TALWANDI SABO	S-NPP	74.94008	29.99331	13:06:00	D	4.50
101	BATHINDA	TALWANDI SABO	S-NPP	74.81297	30.00276	13:06:00	D	4.10
102	BATHINDA	TALWANDI SABO	S-NPP	75.04444	30.00631	13:06:00	D	5.70
103	BATHINDA	TALWANDI SABO	S-NPP	75.00291	30.01550	13:06:00	D	6.60
104	BATHINDA	TALWANDI SABO	TERRA-1	75.03602	30.02383	11:13:00	D	15.66
105	BATHINDA	TALWANDI SABO	S-NPP	75.06286	30.02806	13:06:00	D	6.90
106	BATHINDA	TALWANDI SABO	TERRA-1	74.95076	30.05228	11:13:00	D	27.71
107	BATHINDA	TALWANDI SABO	S-NPP	74.92962	30.06763	13:06:00	D	6.40
108	BATHINDA	TALWANDI SABO	S-NPP	74.92593	30.06822	13:06:00	D	4.10
109	BATHINDA	TALWANDI SABO	S-NPP	74.93059	30.06922	13:06:00	D	9.50
110	BATHINDA	TALWANDI SABO	S-NPP	74.92377	30.07092	13:06:00	D	4.20
111	BATHINDA	TALWANDI SABO	S-NPP	74.92844	30.07189	13:06:00	D	6.40
112	BATHINDA	TALWANDI SABO	S-NPP	74.92477	30.07248	13:06:00	D	4.10
113	BATHINDA	TALWANDI SABO	S-NPP	74.94013	30.08327	13:06:00	D	4.00
114	BATHINDA	TALWANDI SABO	S-NPP	74.94109	30.08494	13:06:00	D	6.40
115	BATHINDA	TALWANDI SABO	TERRA-1	74.94394	30.08671	11:13:00	D	18.73
116	BATHINDA	TALWANDI SABO	S-NPP	75.13705	30.09242	13:06:00	D	5.30
117	BATHINDA	TALWANDI SABO	S-NPP	75.19706	30.10030	13:06:00	D	6.20
118	BATHINDA	TALWANDI SABO	S-NPP	75.11127	30.12086	13:06:00	D	3.10
119	FARIDKOT	FARIDKOT	TERRA-1	74.72907	30.54036	11:13:00	D	6.21
120	FARIDKOT	FARIDKOT	S-NPP	74.72227	30.56312	13:06:00	D	5.50
121	FARIDKOT	FARIDKOT	TERRA-1	74.69838	30.58079	11:13:00	D	12.99
122	FARIDKOT	FARIDKOT	S-NPP	74.66326	30.60196	13:06:00	D	6.20
123	FARIDKOT	FARIDKOT	S-NPP	74.62524	30.63015	13:06:00	D	2.90
124	FARIDKOT	FARIDKOT	TERRA-1	74.59299	30.66074	11:13:00	D	15.86

125	FARIDKOT	FARIDKOT	TERRA-1	74.88255	30.66163	11:13:00	D	10.62
126	FARIDKOT	FARIDKOT	S-NPP	74.89512	30.67310	13:06:00	D	2.00
127	FARIDKOT	FARIDKOT	S-NPP	74.64770	30.67553	13:06:00	D	5.30
128	FARIDKOT	FARIDKOT	S-NPP	74.64424	30.67570	13:06:00	D	5.70
129	FARIDKOT	FARIDKOT	S-NPP	74.67728	30.67715	13:06:00	D	2.70
130	FARIDKOT	FARIDKOT	S-NPP	74.67375	30.67749	13:06:00	D	3.20
131	FARIDKOT	FARIDKOT	TERRA-1	74.83139	30.67960	11:13:00	D	11.38
132	FARIDKOT	FARIDKOT	S-NPP	74.84209	30.68884	13:06:00	D	9.70
133	FARIDKOT	FARIDKOT	S-NPP	74.56335	30.69472	13:06:00	D	7.00
134	FARIDKOT	FARIDKOT	S-NPP	74.49249	30.71157	13:06:00	D	9.80
135	FARIDKOT	FARIDKOT	S-NPP	74.50573	30.71892	13:06:00	D	4.00
136	FARIDKOT	FARIDKOT	S-NPP	74.49007	30.72018	13:06:00	D	28.00
137	FARIDKOT	FARIDKOT	S-NPP	74.49970	30.72221	13:06:00	D	4.00
138	FARIDKOT	FARIDKOT	S-NPP	74.50452	30.72322	13:06:00	D	4.00
139	FARIDKOT	FARIDKOT	S-NPP	74.47676	30.73106	13:06:00	D	4.80
140	FARIDKOT	FARIDKOT	S-NPP	74.69715	30.73655	13:06:00	D	7.60
141	FARIDKOT	FARIDKOT	S-NPP	74.49364	30.74370	13:06:00	D	3.60
142	FARIDKOT	FARIDKOT	S-NPP	74.62516	30.74399	13:06:00	D	3.50
143	FARIDKOT	FARIDKOT	S-NPP	74.69009	30.74407	13:06:00	D	2.70
144	FARIDKOT	FARIDKOT	TERRA-1	74.55684	30.74997	11:13:00	D	24.68
145	FARIDKOT	FARIDKOT	S-NPP	74.78117	30.75419	13:06:00	D	10.00
146	FARIDKOT	FARIDKOT	S-NPP	74.53091	30.75602	13:06:00	D	6.90
147	FARIDKOT	FARIDKOT	S-NPP	74.52895	30.75651	13:06:00	D	8.60
148	FARIDKOT	FARIDKOT	S-NPP	74.77999	30.75842	13:06:00	D	9.00
149	FARIDKOT	FARIDKOT	S-NPP	74.80663	30.76845	13:06:00	D	2.80
150	FARIDKOT	FARIDKOT	S-NPP	74.73098	30.77508	13:06:00	D	4.70
151	FARIDKOT	FARIDKOT	S-NPP	74.59061	30.77748	13:06:00	D	10.90
152	FARIDKOT	FARIDKOT	S-NPP	74.58852	30.77836	13:06:00	D	15.50
153	FARIDKOT	FARIDKOT	S-NPP	74.75779	30.78512	13:06:00	D	3.90
154	FARIDKOT	FARIDKOT	S-NPP	74.74720	30.80532	13:06:00	D	6.20
155	FARIDKOT	FARIDKOT	S-NPP	74.74471	30.80719	13:06:00	D	7.70
156	FARIDKOT	FARIDKOT	S-NPP	74.57536	30.80726	13:06:00	D	27.90

157	FARIDKOT	FARIDKOT	S-NPP	74.68516	30.80800	13:06:00	D	5.10
158	FARIDKOT	FARIDKOT	S-NPP	74.76118	30.80821	13:06:00	D	1.20
159	FARIDKOT	FARIDKOT	S-NPP	74.66991	30.80926	13:06:00	D	4.00
160	FARIDKOT	JAITO	S-NPP	74.86441	30.38465	13:06:00	D	5.80
161	FARIDKOT	JAITO	S-NPP	74.86226	30.38648	13:06:00	D	3.80
162	FARIDKOT	JAITO	S-NPP	74.83658	30.39017	13:06:00	D	3.60
163	FARIDKOT	JAITO	S-NPP	74.92108	30.42801	13:06:00	D	3.90
164	FATEHGARH SAHIB	ALMOH	S-NPP	76.13226	30.57069	13:06:00	D	1.60
165	FATEHGARH SAHIB	ALMOH	S-NPP	76.13563	30.62113	13:06:00	D	3.20
166	FATEHGARH SAHIB	ALMOH	S-NPP	76.18010	30.62160	13:06:00	D	3.40
167	FATEHGARH SAHIB	BASSI PATHANAN	S-NPP	76.43317	30.70364	13:06:00	D	3.60
168	FATEHGARH SAHIB	FATEHGARH SAHIB	S-NPP	76.54071	30.57072	13:06:00	D	3.20
169	FATEHGARH SAHIB	FATEHGARH SAHIB	S-NPP	76.44727	30.58513	13:06:00	D	2.80
170	FATEHGARH SAHIB	FATEHGARH SAHIB	S-NPP	76.39252	30.58680	13:06:00	D	4.00
171	FATEHGARH SAHIB	FATEHGARH SAHIB	S-NPP	76.39828	30.58791	13:06:00	D	6.30
172	FATEHGARH SAHIB	KHAMANOH	S-NPP	76.32266	30.78654	13:06:00	D	5.90
173	FATEHGARH SAHIB	KHAMANOH	S-NPP	76.40159	30.83079	13:06:00	D	4.10
174	FIROZPUR	ABOHAR	TERRA-1	74.06504	30.03551	11:13:00	D	6.79
175	FIROZPUR	ABOHAR	S-NPP	74.05658	30.04225	13:06:00	D	9.10
176	FIROZPUR	ABOHAR	S-NPP	74.17857	30.18746	13:06:00	D	13.40
177	FIROZPUR	ABOHAR	S-NPP	74.29653	30.18948	13:06:00	D	2.30
178	FIROZPUR	ABOHAR	S-NPP	74.29661	30.20815	13:06:00	D	6.30
179	FIROZPUR	FAZILKA	S-NPP	74.00529	30.19749	13:06:00	D	3.50
180	FIROZPUR	FAZILKA	S-NPP	74.00767	30.19890	13:06:00	D	5.00
181	FIROZPUR	FAZILKA	S-NPP	74.08605	30.20528	13:06:00	D	3.30
182	FIROZPUR	FAZILKA	S-NPP	74.02614	30.23142	13:06:00	D	4.50
183	FIROZPUR	FAZILKA	S-NPP	73.99621	30.23911	13:06:00	D	6.50
184	FIROZPUR	FAZILKA	S-NPP	74.07165	30.24609	13:06:00	D	6.80
185	FIROZPUR	FAZILKA	S-NPP	73.97427	30.27707	13:06:00	D	1.60
186	FIROZPUR	FAZILKA	TERRA-1	74.17759	30.31399	11:13:00	D	10.86
187	FIROZPUR	FAZILKA	S-NPP	74.18114	30.32144	13:06:00	D	8.40
188	FIROZPUR	FAZILKA	S-NPP	74.18623	30.32253	13:06:00	D	10.80

189	FIROZPUR	FAZILKA	S-NPP	73.95207	30.32474	13:06:00	D	6.90
190	FIROZPUR	FAZILKA	TERRA-1	74.10495	30.38316	11:13:00	D	6.79
191	FIROZPUR	FAZILKA	S-NPP	74.14244	30.40850	13:06:00	D	8.40
192	FIROZPUR	FAZILKA	S-NPP	74.26524	30.44874	13:06:00	D	4.10
193	FIROZPUR	FAZILKA	S-NPP	74.19344	30.45677	13:06:00	D	20.80
194	FIROZPUR	FIROZPUR	S-NPP	74.87579	30.76507	13:06:00	D	2.90
195	FIROZPUR	FIROZPUR	S-NPP	74.48451	30.76974	13:06:00	D	3.70
196	FIROZPUR	FIROZPUR	S-NPP	74.51814	30.77693	13:06:00	D	9.70
197	FIROZPUR	FIROZPUR	S-NPP	74.49653	30.78142	13:06:00	D	3.20
198	FIROZPUR	FIROZPUR	S-NPP	74.52052	30.78653	13:06:00	D	5.80
199	FIROZPUR	FIROZPUR	S-NPP	74.49291	30.79430	13:06:00	D	7.20
200	FIROZPUR	FIROZPUR	S-NPP	74.51090	30.80266	13:06:00	D	4.90
201	FIROZPUR	FIROZPUR	S-NPP	74.57061	30.80625	13:06:00	D	27.90
202	FIROZPUR	FIROZPUR	S-NPP	74.53483	30.80774	13:06:00	D	6.20
203	FIROZPUR	FIROZPUR	S-NPP	74.57417	30.81154	13:06:00	D	27.90
204	FIROZPUR	FIROZPUR	S-NPP	74.66748	30.83575	13:06:00	D	8.70
205	FIROZPUR	FIROZPUR	S-NPP	74.41190	30.84561	13:06:00	D	5.20
206	FIROZPUR	FIROZPUR	S-NPP	74.41067	30.84991	13:06:00	D	5.20
207	FIROZPUR	FIROZPUR	S-NPP	74.41241	30.85008	13:06:00	D	15.80
208	FIROZPUR	FIROZPUR	S-NPP	74.37600	30.85139	13:06:00	D	2.40
209	FIROZPUR	FIROZPUR	S-NPP	74.52757	30.85157	13:06:00	D	4.80
210	FIROZPUR	FIROZPUR	S-NPP	74.37478	30.85570	13:06:00	D	10.80
211	FIROZPUR	FIROZPUR	S-NPP	74.49666	30.85911	13:06:00	D	4.50
212	FIROZPUR	FIROZPUR	S-NPP	74.40876	30.86300	13:06:00	D	9.10
213	FIROZPUR	FIROZPUR	S-NPP	74.67910	30.86517	13:06:00	D	28.20
214	FIROZPUR	FIROZPUR	S-NPP	74.83121	30.86567	13:06:00	D	4.50
215	FIROZPUR	FIROZPUR	S-NPP	74.68378	30.86615	13:06:00	D	29.50
216	FIROZPUR	FIROZPUR	S-NPP	74.40753	30.86731	13:06:00	D	9.10
217	FIROZPUR	FIROZPUR	S-NPP	74.53960	30.86834	13:06:00	D	6.30
218	FIROZPUR	FIROZPUR	S-NPP	74.54304	30.86839	13:06:00	D	7.70
219	FIROZPUR	FIROZPUR	S-NPP	74.54436	30.86936	13:06:00	D	6.80
220	FIROZPUR	FIROZPUR	S-NPP	74.67791	30.86941	13:06:00	D	28.20

221	FIROZPUR	FIROZPUR	S-NPP	74.60600	30.87695	13:06:00	D	31.20
222	FIROZPUR	FIROZPUR	S-NPP	74.60715	30.87831	13:06:00	D	79.20
223	FIROZPUR	FIROZPUR	S-NPP	74.40871	30.88127	13:06:00	D	3.10
224	FIROZPUR	FIROZPUR	S-NPP	74.42080	30.89297	13:06:00	D	7.20
225	FIROZPUR	FIROZPUR	S-NPP	74.76871	30.89724	13:06:00	D	3.40
226	FIROZPUR	FIROZPUR	S-NPP	74.77333	30.89820	13:06:00	D	5.00
227	FIROZPUR	FIROZPUR	S-NPP	74.80790	30.91426	13:06:00	D	4.20
228	FIROZPUR	FIROZPUR	S-NPP	74.47374	30.92240	13:06:00	D	9.60
229	FIROZPUR	FIROZPUR	S-NPP	74.42915	30.93575	13:06:00	D	3.60
230	FIROZPUR	FIROZPUR	S-NPP	74.76655	30.99719	13:06:00	D	4.30
231	FIROZPUR	FIROZPUR	S-NPP	74.77578	30.99911	13:06:00	D	3.00
232	FIROZPUR	FIROZPUR	S-NPP	74.72827	31.01157	13:06:00	D	4.60
233	FIROZPUR	FIROZPUR	S-NPP	74.72903	31.01453	13:06:00	D	11.40
234	FIROZPUR	FIROZPUR	S-NPP	74.72709	31.01579	13:06:00	D	4.60
235	FIROZPUR	FIROZPUR	S-NPP	74.65336	31.03877	13:06:00	D	6.40
236	FIROZPUR	FIROZPUR	S-NPP	74.73002	31.04601	13:06:00	D	5.40
237	FIROZPUR	FIROZPUR	S-NPP	74.67548	31.04792	13:06:00	D	6.90
238	FIROZPUR	FIROZPUR	S-NPP	74.70100	31.06223	13:06:00	D	5.50
239	FIROZPUR	FIROZPUR	TERRA-1	74.78739	31.06677	11:13:00	D	7.08
240	FIROZPUR	JALALABAD	S-NPP	74.28028	30.45194	13:06:00	D	5.20
241	FIROZPUR	JALALABAD	S-NPP	74.36120	30.48297	13:06:00	D	4.30
242	FIROZPUR	JALALABAD	S-NPP	74.32153	30.50130	13:06:00	D	7.90
243	FIROZPUR	JALALABAD	S-NPP	74.32401	30.50286	13:06:00	D	6.40
244	FIROZPUR	JALALABAD	S-NPP	74.11935	30.53694	13:06:00	D	29.80
245	FIROZPUR	JALALABAD	S-NPP	74.11810	30.54135	13:06:00	D	29.80
246	FIROZPUR	JALALABAD	S-NPP	74.36365	30.55654	13:06:00	D	8.30
247	FIROZPUR	JALALABAD	S-NPP	74.36242	30.56089	13:06:00	D	7.70
248	FIROZPUR	JALALABAD	S-NPP	74.38800	30.69868	13:06:00	D	3.40
249	FIROZPUR	JALALABAD	TERRA-1	74.44259	30.71104	11:13:00	D	5.85
250	FIROZPUR	JALALABAD	S-NPP	74.32516	30.71248	13:06:00	D	2.50
251	FIROZPUR	JALALABAD	S-NPP	74.32659	30.71330	13:06:00	D	4.60
252	FIROZPUR	JALALABAD	S-NPP	74.32270	30.72117	13:06:00	D	3.30

253	FIROZPUR	JALALABAD	S-NPP	74.35709	30.76536	13:06:00	D	3.20
254	FIROZPUR	JALALABAD	S-NPP	74.29811	30.77117	13:06:00	D	15.20
255	FIROZPUR	JALALABAD	TERRA-1	74.44157	30.78111	11:13:00	D	14.55
256	FIROZPUR	ZIRA	S-NPP	75.01400	30.88180	13:06:00	D	2.90
257	FIROZPUR	ZIRA	S-NPP	74.95085	30.88625	13:06:00	D	7.40
258	FIROZPUR	ZIRA	S-NPP	74.94970	30.89043	13:06:00	D	7.40
259	FIROZPUR	ZIRA	S-NPP	74.94402	30.89367	13:06:00	D	4.70
260	FIROZPUR	ZIRA	S-NPP	74.91544	30.92755	13:06:00	D	4.30
261	FIROZPUR	ZIRA	S-NPP	74.85831	30.94239	13:06:00	D	5.60
262	FIROZPUR	ZIRA	S-NPP	74.85416	30.94436	13:06:00	D	9.20
263	FIROZPUR	ZIRA	S-NPP	74.91892	30.95360	13:06:00	D	4.10
264	FIROZPUR	ZIRA	S-NPP	74.87228	30.96593	13:06:00	D	6.20
265	FIROZPUR	ZIRA	S-NPP	74.87683	30.96689	13:06:00	D	6.20
266	FIROZPUR	ZIRA	S-NPP	75.19088	30.97090	13:06:00	D	6.70
267	FIROZPUR	ZIRA	S-NPP	75.12186	31.02245	13:06:00	D	2.70
268	FIROZPUR	ZIRA	S-NPP	74.99046	31.03908	13:06:00	D	3.00
269	FIROZPUR	ZIRA	S-NPP	75.06523	31.04133	13:06:00	D	2.80
270	FIROZPUR	ZIRA	S-NPP	75.06967	31.04224	13:06:00	D	4.30
271	FIROZPUR	ZIRA	S-NPP	74.82759	31.06214	13:06:00	D	6.70
272	FIROZPUR	ZIRA	S-NPP	74.82642	31.06633	13:06:00	D	6.70
273	FIROZPUR	ZIRA	S-NPP	74.94427	31.07344	13:06:00	D	3.80
274	GURDASPUR	BATALA	S-NPP	75.42850	31.65117	13:06:00	D	2.70
275	GURDASPUR	BATALA	S-NPP	75.39800	31.66618	13:06:00	D	1.80
276	GURDASPUR	BATALA	S-NPP	75.23696	31.68730	13:06:00	D	5.60
277	GURDASPUR	BATALA	S-NPP	75.41750	31.69128	13:06:00	D	2.50
278	GURDASPUR	BATALA	S-NPP	75.41529	31.69930	13:06:00	D	1.70
279	GURDASPUR	BATALA	S-NPP	75.42361	31.70096	13:06:00	D	3.70
280	GURDASPUR	BATALA	S-NPP	75.46108	31.72493	13:06:00	D	2.70
281	GURDASPUR	BATALA	S-NPP	75.29793	31.72545	13:06:00	D	3.20
282	GURDASPUR	BATALA	S-NPP	75.34636	31.72684	13:06:00	D	2.70
283	GURDASPUR	BATALA	S-NPP	75.35055	31.72770	13:06:00	D	4.40
284	GURDASPUR	BATALA	S-NPP	75.36088	31.73830	13:06:00	D	2.40

285	GURDASPUR	BATALA	S-NPP	75.25186	31.76298	13:06:00	D	2.00
286	GURDASPUR	BATALA	S-NPP	75.16753	31.76576	13:06:00	D	2.80
287	GURDASPUR	BATALA	S-NPP	75.16959	31.76775	13:06:00	D	4.10
288	GURDASPUR	BATALA	S-NPP	75.47902	31.77076	13:06:00	D	6.80
289	GURDASPUR	BATALA	S-NPP	75.23131	31.77902	13:06:00	D	5.60
290	GURDASPUR	BATALA	S-NPP	75.22926	31.77976	13:06:00	D	3.20
291	GURDASPUR	BATALA	S-NPP	75.23351	31.78061	13:06:00	D	3.20
292	GURDASPUR	BATALA	S-NPP	75.13939	31.78568	13:06:00	D	7.20
293	GURDASPUR	BATALA	S-NPP	75.10709	31.78760	13:06:00	D	3.40
294	GURDASPUR	BATALA	S-NPP	75.17471	31.78869	13:06:00	D	4.90
295	GURDASPUR	BATALA	S-NPP	75.30806	31.80767	13:06:00	D	6.00
296	GURDASPUR	BATALA	S-NPP	75.12469	31.83847	13:06:00	D	5.10
297	GURDASPUR	BATALA	S-NPP	75.25148	31.85143	13:06:00	D	2.10
298	GURDASPUR	BATALA	TERRA-1	75.08888	31.88484	11:13:00	D	7.90
299	GURDASPUR	BATALA	S-NPP	75.15665	31.92011	13:06:00	D	2.20
300	GURDASPUR	DERA BABA NANAK	TERRA-1	75.08718	31.92377	11:13:00	D	9.63
301	GURDASPUR	DERA BABA NANAK	S-NPP	74.97475	31.98828	13:06:00	D	10.00
302	GURDASPUR	GURDASPUR	S-NPP	75.52522	31.84381	13:06:00	D	2.50
303	GURDASPUR	GURDASPUR	S-NPP	75.31457	31.86422	13:06:00	D	2.10
304	GURDASPUR	GURDASPUR	S-NPP	75.34579	31.87901	13:06:00	D	3.10
305	GURDASPUR	GURDASPUR	S-NPP	75.34636	31.90875	13:06:00	D	3.30
306	GURDASPUR	GURDASPUR	S-NPP	75.35178	31.92190	13:06:00	D	5.60
307	GURDASPUR	GURDASPUR	S-NPP	75.47637	31.94307	13:06:00	D	3.60
308	GURDASPUR	GURDASPUR	S-NPP	75.47646	31.94328	13:06:00	D	3.10
309	GURDASPUR	GURDASPUR	S-NPP	75.27052	31.96040	13:06:00	D	2.50
310	GURDASPUR	GURDASPUR	S-NPP	75.27750	31.98303	13:06:00	D	2.50
311	GURDASPUR	GURDASPUR	S-NPP	75.20243	32.04792	13:06:00	D	11.70
312	GURDASPUR	GURDASPUR	S-NPP	75.21929	32.05136	13:06:00	D	4.80
313	GURDASPUR	GURDASPUR	S-NPP	75.14064	32.06092	13:06:00	D	4.60
314	GURDASPUR	GURDASPUR	S-NPP	75.24758	32.06137	13:06:00	D	2.00
315	GURDASPUR	GURDASPUR	S-NPP	75.15337	32.06350	13:06:00	D	4.20
316	GURDASPUR	GURDASPUR	S-NPP	75.15762	32.06437	13:06:00	D	4.20

317	GURDASPUR	GURDASPUR	S-NPP	75.22855	32.06600	13:06:00	D	9.40
318	HOSHIARPUR	DASUYA	TERRA-1	75.59876	31.61385	11:13:00	D	6.00
319	HOSHIARPUR	DASUYA	S-NPP	75.57832	31.70665	13:06:00	D	8.90
320	HOSHIARPUR	DASUYA	S-NPP	75.58241	31.70746	13:06:00	D	7.40
321	JALANDHAR	JALANDHAR I	S-NPP	75.61729	31.48273	13:06:00	D	3.50
322	JALANDHAR	JALANDHAR II	S-NPP	75.51218	31.47003	13:06:00	D	5.30
323	JALANDHAR	JALANDHAR II	S-NPP	75.69760	31.50302	13:06:00	D	4.80
324	JALANDHAR	JALANDHAR II	S-NPP	75.55002	31.52373	13:06:00	D	5.40
325	JALANDHAR	NAKODAR	S-NPP	75.41329	31.00756	13:06:00	D	4.30
326	JALANDHAR	NAKODAR	S-NPP	75.49210	31.06456	13:06:00	D	4.20
327	JALANDHAR	NAKODAR	S-NPP	75.49120	31.06601	13:06:00	D	4.70
328	JALANDHAR	NAKODAR	S-NPP	75.48536	31.17317	13:06:00	D	0.80
329	JALANDHAR	NAKODAR	S-NPP	75.49374	31.17490	13:06:00	D	5.70
330	JALANDHAR	NAKODAR	S-NPP	75.49287	31.17552	13:06:00	D	5.60
331	JALANDHAR	NAKODAR	S-NPP	75.52277	31.19788	13:06:00	D	4.60
332	JALANDHAR	PHILLAUR	S-NPP	75.68486	30.99903	13:06:00	D	5.80
333	JALANDHAR	PHILLAUR	S-NPP	75.68739	30.99957	13:06:00	D	5.90
334	JALANDHAR	PHILLAUR	S-NPP	75.91686	31.05873	13:06:00	D	3.40
335	JALANDHAR	SHAHKOT	S-NPP	75.40051	31.00496	13:06:00	D	3.30
336	JALANDHAR	SHAHKOT	S-NPP	75.24100	31.04279	13:06:00	D	3.90
337	JALANDHAR	SHAHKOT	S-NPP	75.37305	31.09149	13:06:00	D	3.00
338	JALANDHAR	SHAHKOT	S-NPP	75.35691	31.10109	13:06:00	D	18.20
339	JALANDHAR	SHAHKOT	S-NPP	75.32225	31.12845	13:06:00	D	3.60
340	JALANDHAR	SHAHKOT	S-NPP	75.28992	31.13054	13:06:00	D	2.80
341	JALANDHAR	SHAHKOT	S-NPP	75.33607	31.16377	13:06:00	D	15.90
342	KAPURTHALA	BHOLATH	S-NPP	75.46184	31.52684	13:06:00	D	2.50
343	KAPURTHALA	BHOLATH	S-NPP	75.46599	31.52769	13:06:00	D	6.00
344	KAPURTHALA	BHOLATH	S-NPP	75.56650	31.59023	13:06:00	D	11.10
345	KAPURTHALA	BHOLATH	S-NPP	75.57061	31.59105	13:06:00	D	9.30
346	KAPURTHALA	BHOLATH	S-NPP	75.56541	31.59422	13:06:00	D	7.00
347	KAPURTHALA	KAPURTHALA	S-NPP	75.43600	31.50883	13:06:00	D	1.80
348	KAPURTHALA	PHAGWARA	S-NPP	75.86524	31.28415	13:06:00	D	3.30

349	KAPURTHALA	PHAGWARA	S-NPP	75.79608	31.33701	13:06:00	D	4.90
350	KAPURTHALA	PHAGWARA	S-NPP	75.79502	31.34097	13:06:00	D	4.90
351	KAPURTHALA	SULTANPUR LODHI	S-NPP	75.11224	31.19573	13:06:00	D	4.20
352	KAPURTHALA	SULTANPUR LODHI	S-NPP	75.24529	31.19684	13:06:00	D	3.70
353	KAPURTHALA	SULTANPUR LODHI	S-NPP	75.23440	31.20325	13:06:00	D	1.80
354	LUDHIANA	JAGRAON	S-NPP	75.38200	30.67666	13:06:00	D	3.70
355	LUDHIANA	JAGRAON	S-NPP	75.38089	30.68076	13:06:00	D	2.60
356	LUDHIANA	JAGRAON	S-NPP	75.46563	30.73895	13:06:00	D	4.10
357	LUDHIANA	JAGRAON	S-NPP	75.38080	30.75166	13:06:00	D	6.70
358	LUDHIANA	JAGRAON	S-NPP	75.38510	30.75254	13:06:00	D	9.00
359	LUDHIANA	JAGRAON	S-NPP	75.54424	30.84494	13:06:00	D	2.00
360	LUDHIANA	JAGRAON	S-NPP	75.59534	30.87078	13:06:00	D	6.20
361	LUDHIANA	JAGRAON	S-NPP	75.59450	30.87201	13:06:00	D	7.30
362	LUDHIANA	JAGRAON	S-NPP	75.58263	30.88521	13:06:00	D	1.90
363	LUDHIANA	JAGRAON	S-NPP	75.58155	30.88924	13:06:00	D	7.70
364	LUDHIANA	KHANNA	S-NPP	76.10069	30.70733	13:06:00	D	5.00
365	LUDHIANA	KHANNA	S-NPP	76.09965	30.71127	13:06:00	D	5.00
366	LUDHIANA	KHANNA	S-NPP	76.23129	30.72484	13:06:00	D	6.50
367	LUDHIANA	KHANNA	S-NPP	76.23027	30.72875	13:06:00	D	6.50
368	LUDHIANA	LUDHIANA EAST	TERRA-1	75.94493	30.79488	11:13:00	D	9.33
369	LUDHIANA	SAMRALA	S-NPP	76.15079	30.76444	13:06:00	D	3.00
370	LUDHIANA	SAMRALA	S-NPP	76.15229	30.76709	13:06:00	D	3.50
371	LUDHIANA	SAMRALA	S-NPP	76.26181	30.78667	13:06:00	D	5.40
372	LUDHIANA	SAMRALA	S-NPP	76.16986	30.80953	13:06:00	D	6.90
373	LUDHIANA	SAMRALA	S-NPP	76.10613	30.86305	13:06:00	D	5.90
374	MANSA	BUDHLADA	TERRA-1	75.43505	29.79476	11:13:00	D	8.51
375	MANSA	BUDHLADA	S-NPP	75.62599	29.80262	13:06:00	D	9.30
376	MANSA	BUDHLADA	S-NPP	75.63031	29.80350	13:06:00	D	11.60
377	MANSA	BUDHLADA	S-NPP	75.70748	29.81932	13:06:00	D	8.00
378	MANSA	BUDHLADA	S-NPP	75.71594	29.83831	13:06:00	D	2.30
379	MANSA	BUDHLADA	S-NPP	75.65280	29.83843	13:06:00	D	2.00
380	MANSA	BUDHLADA	S-NPP	75.57072	29.83911	13:06:00	D	8.60

381	MANSA	BUDHLADA	S-NPP	75.61079	29.84289	13:06:00	D	4.00
382	MANSA	BUDHLADA	S-NPP	75.60970	29.84701	13:06:00	D	4.00
383	MANSA	BUDHLADA	S-NPP	75.51622	29.85420	13:06:00	D	7.60
384	MANSA	BUDHLADA	S-NPP	75.53914	29.85447	13:06:00	D	2.00
385	MANSA	BUDHLADA	S-NPP	75.51512	29.85834	13:06:00	D	14.90
386	MANSA	BUDHLADA	S-NPP	75.74989	29.86242	13:06:00	D	4.00
387	MANSA	BUDHLADA	S-NPP	75.48644	29.86621	13:06:00	D	1.80
388	MANSA	BUDHLADA	S-NPP	75.75729	29.86822	13:06:00	D	2.00
389	MANSA	BUDHLADA	S-NPP	75.72749	29.87942	13:06:00	D	3.40
390	MANSA	BUDHLADA	TERRA-1	75.48928	29.88459	11:13:00	D	13.39
391	MANSA	BUDHLADA	S-NPP	75.47105	29.88925	13:06:00	D	6.00
392	MANSA	BUDHLADA	S-NPP	75.47544	29.89015	13:06:00	D	6.00
393	MANSA	BUDHLADA	S-NPP	75.71999	29.89082	13:06:00	D	3.50
394	MANSA	BUDHLADA	S-NPP	75.68150	29.90037	13:06:00	D	5.10
395	MANSA	BUDHLADA	S-NPP	75.68578	29.90122	13:06:00	D	8.90
396	MANSA	BUDHLADA	S-NPP	75.68187	29.90229	13:06:00	D	8.10
397	MANSA	BUDHLADA	S-NPP	75.59500	29.90605	13:06:00	D	5.40
398	MANSA	BUDHLADA	S-NPP	75.60464	29.92104	13:06:00	D	3.60
399	MANSA	BUDHLADA	S-NPP	75.51682	29.94223	13:06:00	D	4.30
400	MANSA	BUDHLADA	S-NPP	75.52554	29.94400	13:06:00	D	4.50
401	MANSA	MANSA	S-NPP	75.41045	29.92498	13:06:00	D	2.90
402	MANSA	MANSA	S-NPP	75.41705	29.93509	13:06:00	D	9.60
403	MANSA	MANSA	S-NPP	75.42220	29.99279	13:06:00	D	7.20
404	MANSA	MANSA	S-NPP	75.37663	30.08010	13:06:00	D	15.30
405	MANSA	MANSA	S-NPP	75.48283	30.08030	13:06:00	D	1.40
406	MANSA	MANSA	S-NPP	75.36229	30.08151	13:06:00	D	3.10
407	MANSA	MANSA	S-NPP	75.48387	30.09357	13:06:00	D	4.10
408	MANSA	MANSA	S-NPP	75.55626	30.11285	13:06:00	D	3.80
409	MANSA	MANSA	S-NPP	75.60026	30.11758	13:06:00	D	5.80
410	MANSA	MANSA	S-NPP	75.36213	30.13404	13:06:00	D	2.30
411	MANSA	MANSA	S-NPP	75.37976	30.13763	13:06:00	D	2.80
412	MANSA	MANSA	S-NPP	75.36102	30.13819	13:06:00	D	5.90

413	MANSA	MANSA	S-NPP	75.39789	30.19386	13:06:00	D	3.20
414	MANSA	SARDULGARH	S-NPP	75.26115	29.62665	13:06:00	D	8.40
415	MANSA	SARDULGARH	S-NPP	75.22247	29.64534	13:06:00	D	7.30
416	MANSA	SARDULGARH	S-NPP	75.21677	29.64862	13:06:00	D	5.40
417	MANSA	SARDULGARH	S-NPP	75.30084	29.65709	13:06:00	D	3.80
418	MANSA	SARDULGARH	TERRA-1	75.29011	29.67199	11:13:00	D	22.60
419	MANSA	SARDULGARH	S-NPP	75.29970	29.67902	13:06:00	D	11.30
420	MANSA	SARDULGARH	S-NPP	75.26913	29.68608	13:06:00	D	14.40
421	MANSA	SARDULGARH	S-NPP	75.29179	29.69070	13:06:00	D	5.30
422	MANSA	SARDULGARH	TERRA-1	75.33785	29.70044	11:13:00	D	7.92
423	MANSA	SARDULGARH	S-NPP	75.22650	29.70649	13:06:00	D	2.50
424	MANSA	SARDULGARH	S-NPP	75.23221	29.72104	13:06:00	D	3.40
425	MANSA	SARDULGARH	S-NPP	75.28878	29.72397	13:06:00	D	3.70
426	MANSA	SARDULGARH	S-NPP	75.25945	29.72672	13:06:00	D	8.00
427	MANSA	SARDULGARH	S-NPP	75.22542	29.72852	13:06:00	D	4.30
428	MANSA	SARDULGARH	S-NPP	75.30342	29.75803	13:06:00	D	14.50
429	MANSA	SARDULGARH	S-NPP	75.32589	29.78035	13:06:00	D	2.80
430	MANSA	SARDULGARH	S-NPP	75.29442	29.79158	13:06:00	D	13.40
431	MANSA	SARDULGARH	S-NPP	75.31578	29.80037	13:06:00	D	2.80
432	MANSA	SARDULGARH	S-NPP	75.28653	29.80324	13:06:00	D	3.20
433	MANSA	SARDULGARH	TERRA-1	75.38083	29.82530	11:13:00	D	5.89
434	MANSA	SARDULGARH	S-NPP	75.33057	29.85580	13:06:00	D	6.30
435	MANSA	SARDULGARH	TERRA-1	75.32762	29.87112	11:13:00	D	15.23
436	MANSA	SARDULGARH	TERRA-1	75.23895	29.89058	11:13:00	D	7.37
437	MANSA	SARDULGARH	S-NPP	75.24748	29.60598	13:06:00	D	10.80
438	MOGA	BAGHA PURANA	TERRA-1	75.05648	30.52689	11:13:00	D	11.33
439	MOGA	BAGHA PURANA	S-NPP	74.96134	30.69575	13:06:00	D	8.40
440	MOGA	BAGHA PURANA	S-NPP	74.96018	30.69994	13:06:00	D	8.40
441	MOGA	BAGHA PURANA	S-NPP	75.07402	30.75422	13:06:00	D	5.00
442	MOGA	MOGA	S-NPP	75.22608	30.76337	13:06:00	D	7.10
443	MOGA	MOGA	S-NPP	75.19628	30.77037	13:06:00	D	7.20
444	MOGA	MOGA	S-NPP	75.20837	30.77719	13:06:00	D	4.50

445	MOGA	MOGA	S-NPP	75.20724	30.78133	13:06:00	D	5.70
446	MOGA	MOGA	S-NPP	75.31776	30.78204	13:06:00	D	4.90
447	MOGA	MOGA	S-NPP	75.39229	30.79285	13:06:00	D	21.10
448	MOGA	MOGA	TERRA-1	75.03602	30.80536	11:13:00	D	7.06
449	MOGA	MOGA	S-NPP	75.05922	30.81209	13:06:00	D	6.10
450	MOGA	MOGA	S-NPP	75.06587	30.82226	13:06:00	D	3.80
451	MOGA	MOGA	S-NPP	75.06472	30.82642	13:06:00	D	3.00
452	MOGA	MOGA	S-NPP	75.06126	30.83889	13:06:00	D	1.80
453	MOGA	MOGA	S-NPP	75.09464	30.85451	13:06:00	D	2.30
454	MOGA	NIHAL SINGH WALA	S-NPP	75.29853	30.54167	13:06:00	D	17.70
455	MOGA	NIHAL SINGH WALA	S-NPP	75.18961	30.61984	13:06:00	D	5.40
456	MOGA	NIHAL SINGH WALA	S-NPP	75.38349	30.62069	13:06:00	D	5.30
457	MOGA	NIHAL SINGH WALA	S-NPP	75.18847	30.62399	13:06:00	D	6.90
458	MOGA	NIHAL SINGH WALA	S-NPP	75.23786	30.68215	13:06:00	D	3.30
459	MUKTSAR	GIDDARBAHA	S-NPP	74.56648	30.15179	13:06:00	D	6.30
460	MUKTSAR	GIDDARBAHA	S-NPP	74.57136	30.15282	13:06:00	D	6.30
461	MUKTSAR	GIDDARBAHA	S-NPP	74.70649	30.18147	13:06:00	D	3.60
462	MUKTSAR	GIDDARBAHA	S-NPP	74.66101	30.21744	13:06:00	D	4.20
463	MUKTSAR	GIDDARBAHA	S-NPP	74.60426	30.21930	13:06:00	D	6.10
464	MUKTSAR	GIDDARBAHA	S-NPP	74.60718	30.21949	13:06:00	D	11.00
465	MUKTSAR	GIDDARBAHA	S-NPP	74.63013	30.24728	13:06:00	D	6.90
466	MUKTSAR	GIDDARBAHA	TERRA-1	74.65916	30.25590	11:13:00	D	10.71
467	MUKTSAR	GIDDARBAHA	S-NPP	74.52969	30.27628	13:06:00	D	3.60
468	MUKTSAR	GIDDARBAHA	S-NPP	74.63863	30.29014	13:06:00	D	4.40
469	MUKTSAR	GIDDARBAHA	S-NPP	74.63625	30.29875	13:06:00	D	3.10
470	MUKTSAR	GIDDARBAHA	S-NPP	74.52120	30.30660	13:06:00	D	4.90
471	MUKTSAR	GIDDARBAHA	TERRA-1	74.57560	30.32926	11:13:00	D	20.10
472	MUKTSAR	GIDDARBAHA	S-NPP	74.66744	30.35075	13:06:00	D	9.00
473	MUKTSAR	GIDDARBAHA	S-NPP	74.66424	30.35095	13:06:00	D	9.60
474	MUKTSAR	GIDDARBAHA	S-NPP	74.66901	30.35197	13:06:00	D	11.80
475	MUKTSAR	GIDDARBAHA	S-NPP	74.66624	30.35505	13:06:00	D	9.00
476	MUKTSAR	GIDDARBAHA	S-NPP	74.66544	30.36484	13:06:00	D	9.00

477	MUKTSAR	GIDDARBAHA	TERRA-1	74.79046	30.38316	11:13:00	D	18.13
478	MUKTSAR	GIDDARBAHA	S-NPP	74.79671	30.39726	13:06:00	D	9.40
479	MUKTSAR	MALAUT	S-NPP	74.45650	29.95072	13:06:00	D	21.80
480	MUKTSAR	MALAUT	S-NPP	74.46027	29.95615	13:06:00	D	21.50
481	MUKTSAR	MALAUT	S-NPP	74.50874	29.97098	13:06:00	D	2.80
482	MUKTSAR	MALAUT	S-NPP	74.47778	29.99512	13:06:00	D	18.80
483	MUKTSAR	MALAUT	S-NPP	74.50130	30.00480	13:06:00	D	5.30
484	MUKTSAR	MALAUT	S-NPP	74.45193	30.03128	13:06:00	D	3.90
485	MUKTSAR	MALAUT	S-NPP	74.50765	30.03851	13:06:00	D	6.40
486	MUKTSAR	MALAUT	S-NPP	74.51259	30.03956	13:06:00	D	14.70
487	MUKTSAR	MALAUT	S-NPP	74.43465	30.05542	13:06:00	D	3.70
488	MUKTSAR	MALAUT	S-NPP	74.43962	30.05648	13:06:00	D	3.70
489	MUKTSAR	MALAUT	S-NPP	74.51394	30.07215	13:06:00	D	24.50
490	MUKTSAR	MALAUT	S-NPP	74.51271	30.07650	13:06:00	D	24.50
491	MUKTSAR	MALAUT	S-NPP	74.41355	30.08205	13:06:00	D	4.20
492	MUKTSAR	MALAUT	S-NPP	74.41109	30.08293	13:06:00	D	5.10
493	MUKTSAR	MALAUT	S-NPP	74.40735	30.08535	13:06:00	D	9.60
494	MUKTSAR	MALAUT	S-NPP	74.41234	30.08643	13:06:00	D	9.60
495	MUKTSAR	MALAUT	S-NPP	74.40614	30.08974	13:06:00	D	9.60
496	MUKTSAR	MALAUT	S-NPP	74.40878	30.11815	13:06:00	D	3.20
497	MUKTSAR	MALAUT	S-NPP	74.51868	30.11858	13:06:00	D	11.40
498	MUKTSAR	MALAUT	S-NPP	74.42386	30.15843	13:06:00	D	3.60
499	MUKTSAR	MALAUT	S-NPP	74.43135	30.16926	13:06:00	D	6.30
500	MUKTSAR	MALAUT	S-NPP	74.37528	30.17394	13:06:00	D	8.70
501	MUKTSAR	MALAUT	S-NPP	74.37662	30.17628	13:06:00	D	11.20
502	MUKTSAR	MALAUT	S-NPP	74.37406	30.17832	13:06:00	D	7.50
503	MUKTSAR	MALAUT	S-NPP	74.36784	30.18162	13:06:00	D	8.50
504	MUKTSAR	MALAUT	S-NPP	74.37283	30.18270	13:06:00	D	7.50
505	MUKTSAR	MALAUT	S-NPP	74.36915	30.18398	13:06:00	D	22.30
506	MUKTSAR	MALAUT	S-NPP	74.53115	30.18566	13:06:00	D	7.70
507	MUKTSAR	MALAUT	S-NPP	74.41904	30.19443	13:06:00	D	4.90
508	MUKTSAR	MALAUT	S-NPP	74.41637	30.19676	13:06:00	D	4.10

509	MUKTSAR	MALAUT	S-NPP	74.47313	30.19977	13:06:00	D	8.00
510	MUKTSAR	MALAUT	S-NPP	74.47805	30.20083	13:06:00	D	8.00
511	MUKTSAR	MALAUT	S-NPP	74.47472	30.20144	13:06:00	D	12.60
512	MUKTSAR	MALAUT	S-NPP	74.46700	30.20306	13:06:00	D	3.60
513	MUKTSAR	MALAUT	S-NPP	74.52509	30.20737	13:06:00	D	13.40
514	MUKTSAR	MALAUT	S-NPP	74.52998	30.20839	13:06:00	D	21.00
515	MUKTSAR	MALAUT	S-NPP	74.52386	30.21171	13:06:00	D	4.30
516	MUKTSAR	MALAUT	S-NPP	74.41898	30.22509	13:06:00	D	3.20
517	MUKTSAR	MALAUT	S-NPP	74.44493	30.22602	13:06:00	D	4.80
518	MUKTSAR	MALAUT	S-NPP	74.47083	30.24540	13:06:00	D	2.40
519	MUKTSAR	MALAUT	S-NPP	74.48684	30.26262	13:06:00	D	5.80
520	MUKTSAR	MALAUT	S-NPP	74.30717	30.27390	13:06:00	D	7.50
521	MUKTSAR	MALAUT	S-NPP	74.30447	30.27499	13:06:00	D	5.40
522	MUKTSAR	MALAUT	S-NPP	74.42397	30.28999	13:06:00	D	29.30
523	MUKTSAR	MALAUT	S-NPP	74.42166	30.29035	13:06:00	D	17.20
524	MUKTSAR	MALAUT	S-NPP	74.48664	30.30817	13:06:00	D	2.00
525	MUKTSAR	MALAUT	S-NPP	74.47569	30.32882	13:06:00	D	3.50
526	MUKTSAR	MUKTSAR	S-NPP	74.50876	30.37720	13:06:00	D	3.70
527	MUKTSAR	MUKTSAR	S-NPP	74.34385	30.45158	13:06:00	D	26.60
528	MUKTSAR	MUKTSAR	TERRA-1	74.37267	30.45352	11:13:00	D	6.96
529	MUKTSAR	MUKTSAR	S-NPP	74.46321	30.45399	13:06:00	D	3.00
530	MUKTSAR	MUKTSAR	S-NPP	74.34261	30.45593	13:06:00	D	15.90
531	MUKTSAR	MUKTSAR	S-NPP	74.68571	30.51483	13:06:00	D	9.70
532	MUKTSAR	MUKTSAR	S-NPP	74.55782	30.51974	13:06:00	D	13.20
533	MUKTSAR	MUKTSAR	S-NPP	74.57585	30.54627	13:06:00	D	6.20
534	MUKTSAR	MUKTSAR	S-NPP	74.58066	30.54727	13:06:00	D	6.20
535	MUKTSAR	MUKTSAR	S-NPP	74.57755	30.54736	13:06:00	D	12.80
536	MUKTSAR	MUKTSAR	S-NPP	74.56076	30.57109	13:06:00	D	17.00
537	MUKTSAR	MUKTSAR	S-NPP	74.44703	30.57429	13:06:00	D	10.00
538	MUKTSAR	MUKTSAR	S-NPP	74.53912	30.57560	13:06:00	D	3.80
539	MUKTSAR	MUKTSAR	S-NPP	74.55356	30.57867	13:06:00	D	9.20
540	MUKTSAR	MUKTSAR	S-NPP	74.48108	30.58152	13:06:00	D	5.50

541	MUKTSAR	MUKTSAR	S-NPP	74.57516	30.59236	13:06:00	D	4.90
542	MUKTSAR	MUKTSAR	S-NPP	74.58472	30.59439	13:06:00	D	3.70
543	MUKTSAR	MUKTSAR	S-NPP	74.61693	30.60574	13:06:00	D	9.10
544	MUKTSAR	MUKTSAR	S-NPP	74.62169	30.60675	13:06:00	D	10.10
545	MUKTSAR	MUKTSAR	S-NPP	74.62407	30.61631	13:06:00	D	3.60
546	MUKTSAR	MUKTSAR	S-NPP	74.51739	30.61659	13:06:00	D	5.80
547	MUKTSAR	MUKTSAR	S-NPP	74.52704	30.61862	13:06:00	D	34.10
548	NAWASHAHR	BALACHAUR	S-NPP	76.25127	31.15421	13:06:00	D	2.30
549	NAWASHAHR	BALACHAUR	S-NPP	76.21147	31.16681	13:06:00	D	19.50
550	PATIALA	NABHA	S-NPP	76.22710	30.31537	13:06:00	D	3.00
551	PATIALA	NABHA	S-NPP	76.15226	30.33075	13:06:00	D	1.90
552	PATIALA	NABHA	S-NPP	76.19071	30.35925	13:06:00	D	2.20
553	PATIALA	NABHA	S-NPP	76.20257	30.36162	13:06:00	D	4.60
554	PATIALA	NABHA	S-NPP	76.10796	30.37192	13:06:00	D	1.60
555	PATIALA	NABHA	S-NPP	76.18521	30.41213	13:06:00	D	4.70
556	PATIALA	NABHA	S-NPP	76.19312	30.41368	13:06:00	D	3.40
557	PATIALA	NABHA	S-NPP	76.19895	30.42312	13:06:00	D	8.10
558	PATIALA	NABHA	S-NPP	76.27946	30.44297	13:06:00	D	4.00
559	PATIALA	NABHA	S-NPP	76.29292	30.46208	13:06:00	D	31.30
560	PATIALA	NABHA	S-NPP	76.29031	30.46409	13:06:00	D	18.60
561	PATIALA	NABHA	S-NPP	76.12525	30.51415	13:06:00	D	3.00
562	PATIALA	NABHA	S-NPP	76.19035	30.53933	13:06:00	D	2.70
563	PATIALA	NABHA	S-NPP	76.20702	30.54672	13:06:00	D	2.90
564	PATIALA	NABHA	S-NPP	76.20551	30.54807	13:06:00	D	8.00
565	PATIALA	NABHA	S-NPP	76.20597	30.55065	13:06:00	D	3.30
566	PATIALA	PATIALA	S-NPP	76.46490	30.10207	13:06:00	D	3.30
567	PATIALA	PATIALA	S-NPP	76.34702	30.10778	13:06:00	D	6.30
568	PATIALA	PATIALA	S-NPP	76.49655	30.12059	13:06:00	D	4.20
569	PATIALA	PATIALA	S-NPP	76.30940	30.13768	13:06:00	D	1.70
570	PATIALA	PATIALA	S-NPP	76.30700	30.13861	13:06:00	D	7.40
571	PATIALA	PATIALA	TERRA-1	76.32520	30.15858	11:13:00	D	9.15
572	PATIALA	PATIALA	S-NPP	76.43618	30.18498	13:06:00	D	2.50

573	PATIALA	PATIALA	S-NPP	76.64753	30.18657	13:06:00	D	3.70
574	PATIALA	PATIALA	S-NPP	76.42158	30.19442	13:06:00	D	2.60
575	PATIALA	PATIALA	S-NPP	76.40213	30.19881	13:06:00	D	3.90
576	PATIALA	PATIALA	S-NPP	76.59949	30.22940	13:06:00	D	3.60
577	PATIALA	PATIALA	S-NPP	76.35115	30.23001	13:06:00	D	7.90
578	PATIALA	PATIALA	S-NPP	76.54525	30.23100	13:06:00	D	5.30
579	PATIALA	PATIALA	S-NPP	76.46559	30.23589	13:06:00	D	10.20
580	PATIALA	PATIALA	S-NPP	76.53653	30.24154	13:06:00	D	7.30
581	PATIALA	PATIALA	S-NPP	76.34811	30.24179	13:06:00	D	7.80
582	PATIALA	PATIALA	S-NPP	76.35395	30.24293	13:06:00	D	14.20
583	PATIALA	PATIALA	S-NPP	76.35147	30.24490	13:06:00	D	21.60
584	PATIALA	PATIALA	S-NPP	76.59354	30.25265	13:06:00	D	3.30
585	PATIALA	PATIALA	S-NPP	76.43063	30.25369	13:06:00	D	9.60
586	PATIALA	PATIALA	S-NPP	76.55540	30.26153	13:06:00	D	9.80
587	PATIALA	PATIALA	S-NPP	76.51908	30.26265	13:06:00	D	9.60
588	PATIALA	PATIALA	S-NPP	76.23840	30.27198	13:06:00	D	22.10
589	PATIALA	PATIALA	S-NPP	76.18390	30.27363	13:06:00	D	1.00
590	PATIALA	PATIALA	S-NPP	76.51608	30.27431	13:06:00	D	8.40
591	PATIALA	PATIALA	S-NPP	76.23737	30.27592	13:06:00	D	22.10
592	PATIALA	PATIALA	S-NPP	76.62260	30.27859	13:06:00	D	3.50
593	PATIALA	PATIALA	S-NPP	76.49308	30.28547	13:06:00	D	2.20
594	PATIALA	PATIALA	S-NPP	76.49655	30.31886	13:06:00	D	4.70
595	PATIALA	PATIALA	S-NPP	76.49324	30.35497	13:06:00	D	4.00
596	PATIALA	PATIALA	S-NPP	76.25266	30.37988	13:06:00	D	11.90
597	PATIALA	PATIALA	S-NPP	76.49937	30.40101	13:06:00	D	3.90
598	PATIALA	PATIALA	S-NPP	76.38789	30.40254	13:06:00	D	3.50
599	PATIALA	PATIALA	S-NPP	76.49641	30.40354	13:06:00	D	5.80
600	PATIALA	PATIALA	S-NPP	76.49712	30.42408	13:06:00	D	10.50
601	PATIALA	PATIALA	S-NPP	76.38760	30.42710	13:06:00	D	8.10
602	PATIALA	PATIALA	S-NPP	76.39917	30.42937	13:06:00	D	6.90
603	PATIALA	RAJPURA	S-NPP	76.62093	30.32296	13:06:00	D	3.60
604	PATIALA	RAJPURA	S-NPP	76.61540	30.39081	13:06:00	D	4.00

605	PATIALA	RAJPURA	S-NPP	76.61442	30.39467	13:06:00	D	4.40
606	PATIALA	RAJPURA	S-NPP	76.68389	30.39995	13:06:00	D	3.80
607	PATIALA	RAJPURA	S-NPP	76.70725	30.40041	13:06:00	D	4.90
608	PATIALA	RAJPURA	S-NPP	76.66510	30.40441	13:06:00	D	4.90
609	PATIALA	RAJPURA	S-NPP	76.75313	30.44940	13:06:00	D	23.20
610	PATIALA	RAJPURA	S-NPP	76.75062	30.44953	13:06:00	D	35.80
611	PATIALA	RAJPURA	S-NPP	76.76009	30.50359	13:06:00	D	2.40
612	PATIALA	RAJPURA	S-NPP	76.71178	30.51035	13:06:00	D	3.00
613	PATIALA	RAJPURA	S-NPP	76.50056	30.51816	13:06:00	D	6.20
614	PATIALA	RAJPURA	S-NPP	76.50426	30.52703	13:06:00	D	5.70
615	PATIALA	RAJPURA	S-NPP	76.52301	30.54697	13:06:00	D	7.20
616	PATIALA	RAJPURA	S-NPP	76.61172	30.54814	13:06:00	D	4.30
617	PATIALA	RAJPURA	S-NPP	76.65720	30.57720	13:06:00	D	3.00
618	PATIALA	RAJPURA	S-NPP	76.54206	30.61152	13:06:00	D	3.70
619	PATIALA	RAJPURA	S-NPP	76.53978	30.61479	13:06:00	D	7.10
620	PATIALA	SAMANA	S-NPP	76.14709	29.84131	13:06:00	D	24.50
621	PATIALA	SAMANA	AQUA-1	76.13592	29.86213	12:47:00	D	66.14
622	PATIALA	SAMANA	S-NPP	76.13470	29.87248	13:06:00	D	2.80
623	PATIALA	SAMANA	S-NPP	76.16404	29.87404	13:06:00	D	13.70
624	PATIALA	SAMANA	S-NPP	76.16807	29.87484	13:06:00	D	13.70
625	PATIALA	SAMANA	S-NPP	76.13366	29.87648	13:06:00	D	2.80
626	PATIALA	SAMANA	S-NPP	76.12881	29.87957	13:06:00	D	2.80
627	PATIALA	SAMANA	S-NPP	76.12856	29.87968	13:06:00	D	3.50
628	PATIALA	SAMANA	S-NPP	76.16096	29.90286	13:06:00	D	3.10
629	PATIALA	SAMANA	S-NPP	76.18404	29.91170	13:06:00	D	4.20
630	PATIALA	SAMANA	S-NPP	76.15176	29.92200	13:06:00	D	1.90
631	PATIALA	SAMANA	S-NPP	76.13863	29.92358	13:06:00	D	2.60
632	PATIALA	SAMANA	S-NPP	76.14164	29.92838	13:06:00	D	20.90
633	PATIALA	SAMANA	S-NPP	76.17072	29.94674	13:06:00	D	4.70
634	PATIALA	SAMANA	S-NPP	76.17472	29.94754	13:06:00	D	4.70
635	PATIALA	SAMANA	S-NPP	76.13644	29.94833	13:06:00	D	4.20
636	PATIALA	SAMANA	S-NPP	76.14048	29.94913	13:06:00	D	4.20

637	PATIALA	SAMANA	S-NPP	76.14450	29.94993	13:06:00	D	6.80
638	PATIALA	SAMANA	S-NPP	76.16969	29.95073	13:06:00	D	4.70
639	PATIALA	SAMANA	S-NPP	76.12017	29.96190	13:06:00	D	1.70
640	PATIALA	SAMANA	S-NPP	76.18547	29.98732	13:06:00	D	4.60
641	PATIALA	SAMANA	S-NPP	76.18948	29.98811	13:06:00	D	4.60
642	PATIALA	SAMANA	S-NPP	76.17330	30.00167	13:06:00	D	4.00
643	PATIALA	SAMANA	S-NPP	76.17342	30.00254	13:06:00	D	3.80
644	PATIALA	SAMANA	S-NPP	76.18633	30.01769	13:06:00	D	15.30
645	PATIALA	SAMANA	S-NPP	76.19999	30.06220	13:06:00	D	6.40
646	PATIALA	SAMANA	S-NPP	76.16891	30.06857	13:06:00	D	7.30
647	PATIALA	SAMANA	S-NPP	76.22874	30.08039	13:06:00	D	3.10
648	PATIALA	SAMANA	S-NPP	76.18581	30.08444	13:06:00	D	3.10
649	PATIALA	SAMANA	S-NPP	76.19759	30.20413	13:06:00	D	10.60
650	PATIALA	SAMANA	S-NPP	76.20157	30.20491	13:06:00	D	10.60
651	PATIALA	SAMANA	S-NPP	76.22894	30.22857	13:06:00	D	2.60
652	PATIALA	SAMANA	S-NPP	76.13940	30.23558	13:06:00	D	10.20
653	PATIALA	SAMANA	S-NPP	76.15034	30.24194	13:06:00	D	9.60
654	SANGRUR	DHURI	S-NPP	75.75787	30.29762	13:06:00	D	1.90
655	SANGRUR	DHURI	S-NPP	75.91560	30.37575	13:06:00	D	1.60
656	SANGRUR	DHURI	S-NPP	75.76145	30.46760	13:06:00	D	4.70
657	SANGRUR	MALERKOTLA	S-NPP	75.80716	30.51382	13:06:00	D	5.70
658	SANGRUR	MALERKOTLA	S-NPP	75.81022	30.51867	13:06:00	D	7.00
659	SANGRUR	MALERKOTLA	S-NPP	75.84081	30.55017	13:06:00	D	1.60
660	SANGRUR	MOONAK	S-NPP	75.97467	29.76022	13:06:00	D	2.50
661	SANGRUR	MOONAK	TERRA-1	75.87331	29.76182	11:13:00	D	8.43
662	SANGRUR	MOONAK	S-NPP	75.95081	29.76815	13:06:00	D	3.50
663	SANGRUR	MOONAK	S-NPP	75.84726	29.79429	13:06:00	D	2.20
664	SANGRUR	MOONAK	S-NPP	75.90585	29.80600	13:06:00	D	4.20
665	SANGRUR	MOONAK	S-NPP	75.94955	29.80621	13:06:00	D	3.10
666	SANGRUR	MOONAK	S-NPP	75.99302	29.80640	13:06:00	D	2.60
667	SANGRUR	MOONAK	S-NPP	75.94849	29.81025	13:06:00	D	3.10
668	SANGRUR	MOONAK	S-NPP	75.85031	29.81629	13:06:00	D	3.10

669	SANGRUR	MOONAK	TERRA-1	75.86478	29.81722	11:13:00	D	8.61
670	SANGRUR	MOONAK	S-NPP	75.79230	29.81762	13:06:00	D	2.60
671	SANGRUR	MOONAK	S-NPP	75.78815	29.81863	13:06:00	D	4.60
672	SANGRUR	MOONAK	S-NPP	75.79237	29.81950	13:06:00	D	4.60
673	SANGRUR	MOONAK	TERRA-1	75.95993	29.83429	11:13:00	D	9.94
674	SANGRUR	MOONAK	S-NPP	75.86893	29.84799	13:06:00	D	9.10
675	SANGRUR	MOONAK	S-NPP	75.81126	29.84910	13:06:00	D	4.80
676	SANGRUR	MOONAK	S-NPP	76.00256	29.85392	13:06:00	D	4.20
677	SANGRUR	MOONAK	TERRA-1	75.80646	29.85405	11:13:00	D	7.36
678	SANGRUR	MOONAK	S-NPP	76.00198	29.85481	13:06:00	D	4.00
679	SANGRUR	MOONAK	S-NPP	75.91572	29.87029	13:06:00	D	25.40
680	SANGRUR	MOONAK	S-NPP	75.78267	29.87334	13:06:00	D	5.10
681	SANGRUR	MOONAK	S-NPP	75.98806	29.87642	13:06:00	D	3.00
682	SANGRUR	MOONAK	S-NPP	75.91775	29.87921	13:06:00	D	4.70
683	SANGRUR	MOONAK	TERRA-1	76.00291	29.88908	11:13:00	D	10.15
684	SANGRUR	MOONAK	S-NPP	75.78357	29.90354	13:06:00	D	24.70
685	SANGRUR	MOONAK	S-NPP	75.78250	29.90761	13:06:00	D	24.70
686	SANGRUR	MOONAK	S-NPP	75.81726	29.91026	13:06:00	D	9.10
687	SANGRUR	MOONAK	S-NPP	75.89252	29.92525	13:06:00	D	4.30
688	SANGRUR	MOONAK	S-NPP	75.87764	29.95101	13:06:00	D	4.20
689	SANGRUR	MOONAK	S-NPP	75.92726	29.97811	13:06:00	D	8.30
690	SANGRUR	SANGRUR	S-NPP	75.97578	30.17731	13:06:00	D	10.70
691	SANGRUR	SANGRUR	S-NPP	75.97623	30.17743	13:06:00	D	9.80
692	SANGRUR	SANGRUR	S-NPP	76.03385	30.18453	13:06:00	D	4.60
693	SANGRUR	SANGRUR	S-NPP	75.98122	30.19111	13:06:00	D	3.60
694	SANGRUR	SANGRUR	S-NPP	75.63819	30.21145	13:06:00	D	86.40
695	SANGRUR	SANGRUR	S-NPP	76.13332	30.24272	13:06:00	D	3.90
696	SANGRUR	SANGRUR	S-NPP	76.12829	30.24588	13:06:00	D	3.90
697	SANGRUR	SANGRUR	S-NPP	76.13229	30.24668	13:06:00	D	3.90
698	SANGRUR	SANGRUR	S-NPP	76.16817	30.25385	13:06:00	D	1.90
699	SANGRUR	SANGRUR	S-NPP	75.96027	30.25437	13:06:00	D	2.80
700	SANGRUR	SANGRUR	S-NPP	76.04927	30.30554	13:06:00	D	6.40

701	SANGRUR	SANGRUR	S-NPP	76.04933	30.30580	13:06:00	D	7.20
702	SANGRUR	SANGRUR	S-NPP	75.88125	30.30976	13:06:00	D	2.20
703	SANGRUR	SUNAM	S-NPP	75.68278	29.94994	13:06:00	D	3.10
704	SANGRUR	SUNAM	S-NPP	75.75056	29.98085	13:06:00	D	3.00
705	SANGRUR	SUNAM	S-NPP	75.73341	30.03506	13:06:00	D	2.30
706	SANGRUR	SUNAM	S-NPP	75.84438	30.06625	13:06:00	D	7.70
707	SANGRUR	SUNAM	S-NPP	76.00687	30.07019	13:06:00	D	12.40
708	SANGRUR	SUNAM	S-NPP	76.08514	30.10233	13:06:00	D	8.50
709	SANGRUR	SUNAM	S-NPP	75.81705	30.10336	13:06:00	D	10.30
710	SANGRUR	SUNAM	S-NPP	75.97733	30.10587	13:06:00	D	1.30
711	SANGRUR	SUNAM	S-NPP	75.81598	30.10740	13:06:00	D	10.30
712	SANGRUR	SUNAM	S-NPP	76.05373	30.10860	13:06:00	D	11.20
713	SANGRUR	SUNAM	TERRA-1	75.70278	30.14810	11:13:00	D	9.88
714	SANGRUR	SUNAM	S-NPP	75.89317	30.16475	13:06:00	D	2.30
715	SANGRUR	SUNAM	S-NPP	75.89249	30.16513	13:06:00	D	2.60
716	SAS NAGAR	DERABASSI	S-NPP	76.76005	30.43531	13:06:00	D	4.00
717	SAS NAGAR	DERABASSI	S-NPP	76.76162	30.43897	13:06:00	D	4.10
718	SAS NAGAR	DERABASSI	S-NPP	76.75908	30.43914	13:06:00	D	4.00
719	SAS NAGAR	DERABASSI	S-NPP	76.76065	30.44280	13:06:00	D	4.10
720	SAS NAGAR	DERABASSI	S-NPP	76.75810	30.44297	13:06:00	D	3.80
721	SAS NAGAR	DERABASSI	S-NPP	76.87368	30.46558	13:06:00	D	2.20
722	SAS NAGAR	DERABASSI	S-NPP	76.87883	30.55827	13:06:00	D	3.00
723	SBS NAGAR	KHARAR	S-NPP	76.51585	30.63847	13:06:00	D	5.10
724	SBS NAGAR	KHARAR	S-NPP	76.63534	30.70218	13:06:00	D	2.80
725	SBS NAGAR	KHARAR	S-NPP	76.59116	30.71380	13:06:00	D	3.10
726	SBS NAGAR	MOHALI	S-NPP	76.72594	30.58250	13:06:00	D	3.80
727	SBS NAGAR	MOHALI	S-NPP	76.73116	30.60759	13:06:00	D	7.30
728	TARN TARAN	KHADOOR SAHIB	S-NPP	74.98802	31.20964	13:06:00	D	3.20
729	TARN TARAN	KHADOOR SAHIB	S-NPP	74.97353	31.21099	13:06:00	D	3.80
730	TARN TARAN	KHADOOR SAHIB	S-NPP	74.96791	31.21421	13:06:00	D	3.80
731	TARN TARAN	KHADOOR SAHIB	S-NPP	74.99017	31.21885	13:06:00	D	11.30
732	TARN TARAN	KHADOOR SAHIB	TERRA-1	74.94701	31.22667	11:13:00	D	6.21

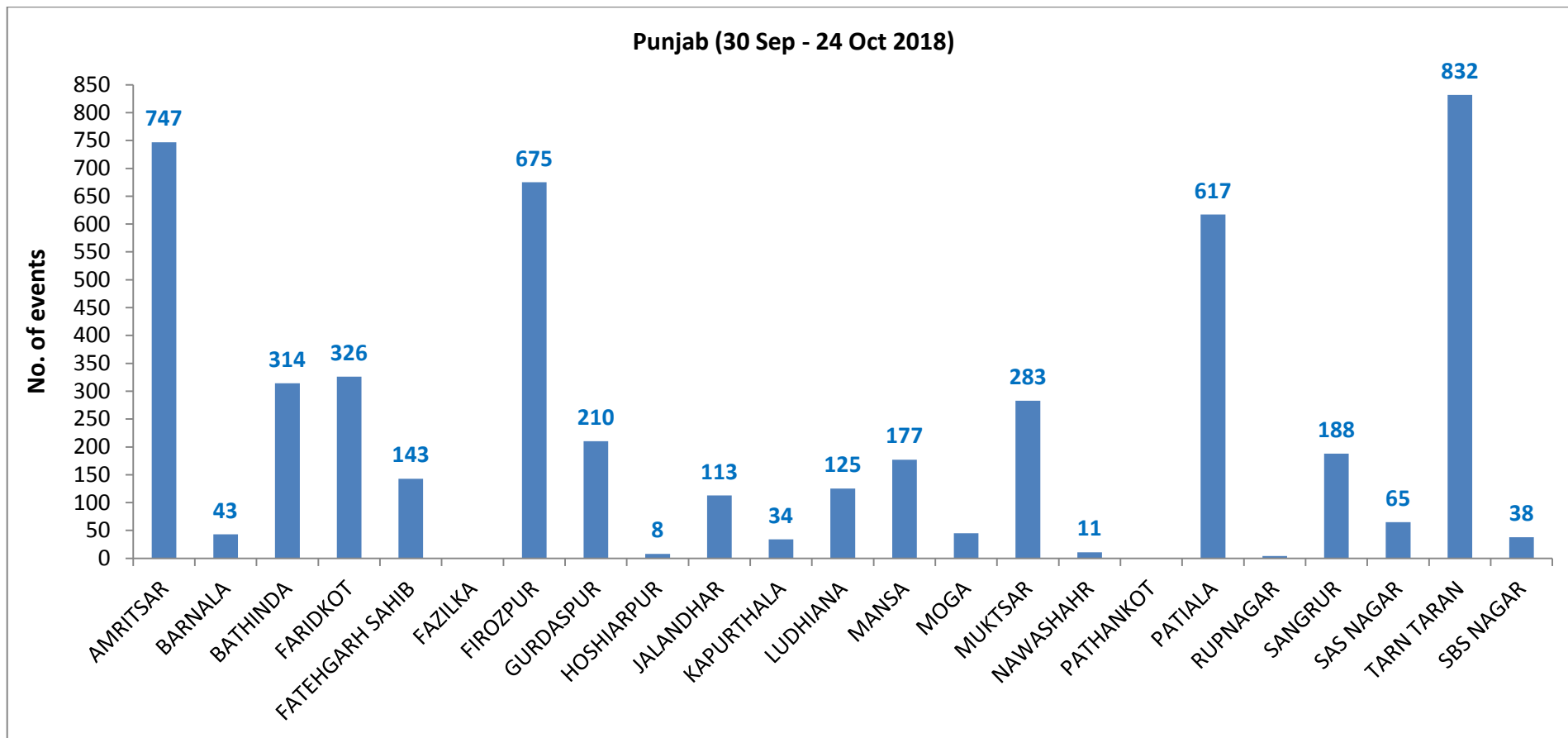
733	TARN TARAN	KHADOOR SAHIB	S-NPP	74.95438	31.22895	13:06:00	D	5.80
734	TARN TARAN	KHADOOR SAHIB	S-NPP	74.94759	31.23632	13:06:00	D	1.30
735	TARN TARAN	KHADOOR SAHIB	S-NPP	75.03534	31.25881	13:06:00	D	4.90
736	TARN TARAN	KHADOOR SAHIB	TERRA-1	75.03602	31.25901	11:13:00	D	5.59
737	TARN TARAN	KHADOOR SAHIB	TERRA-1	74.92518	31.27399	11:13:00	D	13.40
738	TARN TARAN	KHADOOR SAHIB	S-NPP	75.00631	31.27905	13:06:00	D	4.00
739	TARN TARAN	KHADOOR SAHIB	S-NPP	74.91689	31.28720	13:06:00	D	1.70
740	TARN TARAN	KHADOOR SAHIB	S-NPP	74.94251	31.29698	13:06:00	D	7.50
741	TARN TARAN	KHADOOR SAHIB	S-NPP	74.94698	31.29791	13:06:00	D	14.80
742	TARN TARAN	KHADOOR SAHIB	S-NPP	74.99258	31.30310	13:06:00	D	4.10
743	TARN TARAN	KHADOOR SAHIB	S-NPP	75.00585	31.30588	13:06:00	D	1.80
744	TARN TARAN	KHADOOR SAHIB	S-NPP	75.00028	31.30909	13:06:00	D	13.70
745	TARN TARAN	KHADOOR SAHIB	TERRA-1	75.06501	31.30992	11:13:00	D	10.74
746	TARN TARAN	KHADOOR SAHIB	S-NPP	75.05206	31.32427	13:06:00	D	9.10
747	TARN TARAN	KHADOOR SAHIB	S-NPP	74.98126	31.32698	13:06:00	D	4.90
748	TARN TARAN	KHADOOR SAHIB	S-NPP	74.98568	31.32790	13:06:00	D	5.80
749	TARN TARAN	KHADOOR SAHIB	S-NPP	74.82629	31.33876	13:06:00	D	2.70
750	TARN TARAN	KHADOOR SAHIB	AQUA-1	75.10457	31.34346	14:25:00	D	58.91
751	TARN TARAN	KHADOOR SAHIB	S-NPP	75.10104	31.36486	13:06:00	D	10.30
752	TARN TARAN	KHADOOR SAHIB	S-NPP	74.97862	31.37014	13:06:00	D	19.40
753	TARN TARAN	KHADOOR SAHIB	S-NPP	75.05595	31.37730	13:06:00	D	4.90
754	TARN TARAN	KHADOOR SAHIB	S-NPP	74.99519	31.37791	13:06:00	D	3.40
755	TARN TARAN	KHADOOR SAHIB	S-NPP	75.16071	31.38147	13:06:00	D	4.00
756	TARN TARAN	KHADOOR SAHIB	S-NPP	75.05920	31.38231	13:06:00	D	3.10
757	TARN TARAN	KHADOOR SAHIB	S-NPP	74.79428	31.38854	13:06:00	D	4.00
758	TARN TARAN	KHADOOR SAHIB	S-NPP	75.12475	31.39573	13:06:00	D	13.00
759	TARN TARAN	KHADOOR SAHIB	TERRA-1	74.88255	31.40274	11:13:00	D	12.65
760	TARN TARAN	KHADOOR SAHIB	S-NPP	74.77937	31.40751	13:06:00	D	2.30
761	TARN TARAN	KHADOOR SAHIB	S-NPP	75.09175	31.41500	13:06:00	D	3.80
762	TARN TARAN	KHADOOR SAHIB	S-NPP	74.78156	31.41680	13:06:00	D	2.10
763	TARN TARAN	KHADOOR SAHIB	S-NPP	75.08624	31.41822	13:06:00	D	15.10
764	TARN TARAN	KHADOOR SAHIB	S-NPP	75.08237	31.41834	13:06:00	D	7.80

765	TARN TARAN	KHADOOR SAHIB	S-NPP	75.08674	31.41926	13:06:00	D	7.80
766	TARN TARAN	KHADOOR SAHIB	S-NPP	75.12663	31.42208	13:06:00	D	2.90
767	TARN TARAN	KHADOOR SAHIB	S-NPP	75.03957	31.42243	13:06:00	D	5.50
768	TARN TARAN	KHADOOR SAHIB	S-NPP	74.86507	31.42538	13:06:00	D	3.60
769	TARN TARAN	KHADOOR SAHIB	S-NPP	75.12435	31.43026	13:06:00	D	1.60
770	TARN TARAN	KHADOOR SAHIB	TERRA-1	75.14345	31.43419	11:13:00	D	6.23
771	TARN TARAN	KHADOOR SAHIB	S-NPP	74.81875	31.43775	13:06:00	D	1.30
772	TARN TARAN	KHADOOR SAHIB	S-NPP	74.99195	31.44300	13:06:00	D	12.50
773	TARN TARAN	KHADOOR SAHIB	TERRA-1	74.84162	31.44317	11:13:00	D	6.30
774	TARN TARAN	KHADOOR SAHIB	S-NPP	75.14848	31.44514	13:06:00	D	4.10
775	TARN TARAN	KHADOOR SAHIB	S-NPP	75.12456	31.44882	13:06:00	D	2.70
776	TARN TARAN	KHADOOR SAHIB	TERRA-1	75.00703	31.45065	11:13:00	D	7.20
777	TARN TARAN	KHADOOR SAHIB	S-NPP	75.07764	31.45208	13:06:00	D	1.60
778	TARN TARAN	KHADOOR SAHIB	S-NPP	74.89061	31.45262	13:06:00	D	3.10
779	TARN TARAN	KHADOOR SAHIB	S-NPP	75.13531	31.45970	13:06:00	D	3.70
780	TARN TARAN	KHADOOR SAHIB	S-NPP	75.13418	31.46379	13:06:00	D	4.70
781	TARN TARAN	KHADOOR SAHIB	S-NPP	74.75741	31.47321	13:06:00	D	2.90
782	TARN TARAN	KHADOOR SAHIB	S-NPP	75.16648	31.47909	13:06:00	D	2.70
783	TARN TARAN	KHADOOR SAHIB	S-NPP	74.69235	31.48161	13:06:00	D	4.90
784	TARN TARAN	KHADOOR SAHIB	S-NPP	75.12417	31.48334	13:06:00	D	5.10
785	TARN TARAN	KHADOOR SAHIB	S-NPP	75.11001	31.48475	13:06:00	D	6.10
786	TARN TARAN	KHADOOR SAHIB	S-NPP	75.11435	31.48564	13:06:00	D	6.10
787	TARN TARAN	KHADOOR SAHIB	S-NPP	75.10453	31.48795	13:06:00	D	11.80
788	TARN TARAN	KHADOOR SAHIB	S-NPP	75.23949	31.49411	13:06:00	D	2.90
789	TARN TARAN	KHADOOR SAHIB	S-NPP	75.17490	31.49807	13:06:00	D	9.00
790	TARN TARAN	KHADOOR SAHIB	S-NPP	75.05408	31.50362	13:06:00	D	2.70
791	TARN TARAN	KHADOOR SAHIB	S-NPP	74.72751	31.51113	13:06:00	D	12.30
792	TARN TARAN	KHADOOR SAHIB	S-NPP	74.78959	31.54610	13:06:00	D	2.20
793	TARN TARAN	PATTI	S-NPP	74.55907	31.11475	13:06:00	D	12.20
794	TARN TARAN	PATTI	S-NPP	74.80225	31.15739	13:06:00	D	7.50
795	TARN TARAN	PATTI	S-NPP	74.63621	31.15804	13:06:00	D	2.60
796	TARN TARAN	PATTI	S-NPP	74.80681	31.15835	13:06:00	D	7.50

797	TARN TARAN	PATTI	S-NPP	74.53524	31.16377	13:06:00	D	3.40
798	TARN TARAN	PATTI	S-NPP	74.51986	31.16505	13:06:00	D	2.40
799	TARN TARAN	PATTI	S-NPP	74.76558	31.16742	13:06:00	D	5.40
800	TARN TARAN	PATTI	S-NPP	74.52327	31.18829	13:06:00	D	8.50
801	TARN TARAN	PATTI	S-NPP	74.67899	31.19828	13:06:00	D	5.00
802	TARN TARAN	PATTI	S-NPP	74.59505	31.19872	13:06:00	D	3.00
803	TARN TARAN	PATTI	TERRA-1	74.62505	31.19913	11:13:00	D	6.18
804	TARN TARAN	PATTI	S-NPP	74.59974	31.19969	13:06:00	D	3.00
805	TARN TARAN	PATTI	S-NPP	74.88605	31.20153	13:06:00	D	4.40
806	TARN TARAN	PATTI	S-NPP	74.80433	31.20216	13:06:00	D	4.60
807	TARN TARAN	PATTI	S-NPP	74.83159	31.20784	13:06:00	D	14.10
808	TARN TARAN	PATTI	S-NPP	74.78713	31.21187	13:06:00	D	3.10
809	TARN TARAN	PATTI	S-NPP	74.65330	31.21974	13:06:00	D	5.30
810	TARN TARAN	PATTI	S-NPP	74.65524	31.22292	13:06:00	D	10.90
811	TARN TARAN	PATTI	S-NPP	74.88474	31.22330	13:06:00	D	7.70
812	TARN TARAN	PATTI	S-NPP	74.72504	31.22565	13:06:00	D	4.30
813	TARN TARAN	PATTI	S-NPP	74.53707	31.25614	13:06:00	D	5.00
814	TARN TARAN	PATTI	S-NPP	74.62601	31.25696	13:06:00	D	9.70
815	TARN TARAN	PATTI	S-NPP	74.53586	31.26039	13:06:00	D	5.00
816	TARN TARAN	PATTI	S-NPP	74.60500	31.26148	13:06:00	D	2.90
817	TARN TARAN	PATTI	S-NPP	74.73227	31.26155	13:06:00	D	6.20
818	TARN TARAN	PATTI	S-NPP	74.72652	31.26479	13:06:00	D	6.20
819	TARN TARAN	PATTI	S-NPP	74.64803	31.26607	13:06:00	D	8.80
820	TARN TARAN	PATTI	S-NPP	74.54047	31.27933	13:06:00	D	4.90
821	TARN TARAN	PATTI	S-NPP	74.79955	31.28017	13:06:00	D	6.30
822	TARN TARAN	PATTI	TERRA-1	74.66598	31.28297	11:13:00	D	8.91
823	TARN TARAN	PATTI	S-NPP	74.54157	31.29303	13:06:00	D	19.90
824	TARN TARAN	PATTI	S-NPP	74.70789	31.29645	13:06:00	D	4.90
825	TARN TARAN	PATTI	S-NPP	74.83797	31.29707	13:06:00	D	6.20
826	TARN TARAN	PATTI	S-NPP	74.58959	31.29855	13:06:00	D	5.00
827	TARN TARAN	PATTI	S-NPP	74.86618	31.29857	13:06:00	D	2.10
828	TARN TARAN	PATTI	S-NPP	74.59426	31.29952	13:06:00	D	5.00

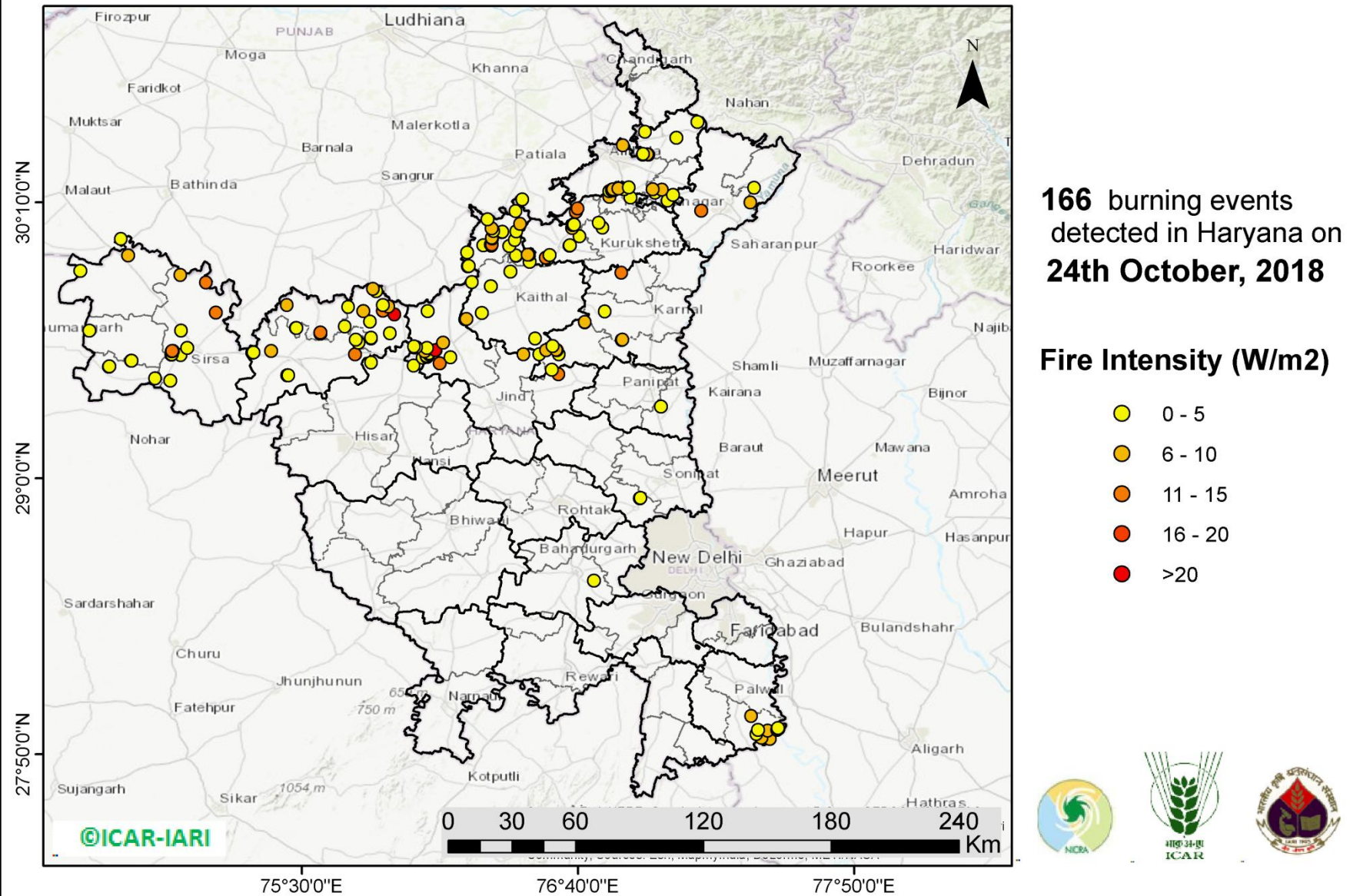
829	TARN TARAN	PATTI	S-NPP	74.63151	31.30726	13:06:00	D	3.30
830	TARN TARAN	PATTI	S-NPP	74.71929	31.30771	13:06:00	D	4.10
831	TARN TARAN	PATTI	S-NPP	74.54820	31.30961	13:06:00	D	3.90
832	TARN TARAN	PATTI	S-NPP	74.55084	31.31290	13:06:00	D	6.10
833	TARN TARAN	PATTI	S-NPP	74.71234	31.31515	13:06:00	D	8.10
834	TARN TARAN	PATTI	S-NPP	74.89417	31.31762	13:06:00	D	2.50
835	TARN TARAN	PATTI	S-NPP	74.88954	31.33424	13:06:00	D	3.00
836	TARN TARAN	PATTI	S-NPP	74.74089	31.33438	13:06:00	D	13.50
837	TARN TARAN	PATTI	S-NPP	74.88390	31.33747	13:06:00	D	2.50
838	TARN TARAN	PATTI	S-NPP	74.65732	31.34184	13:06:00	D	1.90
839	TARN TARAN	PATTI	S-NPP	74.67574	31.34575	13:06:00	D	6.10
840	TARN TARAN	PATTI	S-NPP	74.57721	31.34718	13:06:00	D	5.10
841	TARN TARAN	PATTI	TERRA-1	74.57901	31.34885	11:13:00	D	9.76
842	TARN TARAN	PATTI	S-NPP	74.60509	31.35308	13:06:00	D	3.30
843	TARN TARAN	PATTI	S-NPP	74.63752	31.35994	13:06:00	D	1.60
844	TARN TARAN	PATTI	S-NPP	74.69267	31.38936	13:06:00	D	5.60

District-wise cumulative number of residue burning events in Punjab (30-Sep-2018 to 24-Oct-2018)



(b) Haryana

PADDY RESIDUE BURNING IN HARYANA



<http://geoportal.icar.gov.in:8080/geoexplorer/composer/>

Details of residue burning events in Haryana on 24-Oct-2018

Event S. No.	District	Tehsil / Block	Satellite	Longitude	Latitude	Time (IST)	Day/Night	Fire Power (W/m²)
1	AMBALA	AMBALA	S-NPP	76.79899	30.21559	13:06	D	4.70
2	AMBALA	AMBALA	S-NPP	76.81565	30.21877	13:06	D	5.90
3	AMBALA	AMBALA	S-NPP	76.80913	30.22154	13:06	D	6.40
4	AMBALA	AMBALA	S-NPP	76.81467	30.22260	13:06	D	6.40
5	AMBALA	AMBALA	S-NPP	76.88198	30.23141	13:06	D	1.50
6	AMBALA	AMBALA	S-NPP	76.94065	30.36945	13:06	D	2.60
7	AMBALA	AMBALA	S-NPP	76.95972	30.37102	13:06	D	5.20
8	AMBALA	AMBALA	S-NPP	76.94242	30.37173	13:06	D	2.30
9	AMBALA	AMBALA	S-NPP	76.85616	30.40898	13:06	D	8.50
10	AMBALA	BARARA	S-NPP	77.04490	30.17495	13:06	D	4.30
11	AMBALA	BARARA	S-NPP	77.06714	30.19910	13:06	D	3.80
12	AMBALA	BARARA	S-NPP	76.99104	30.20832	13:06	D	2.90
13	AMBALA	BARARA	TERRA-1	77.02095	30.22146	11:13	D	9.31
14	AMBALA	BARARA	S-NPP	76.98178	30.22248	13:06	D	9.00
15	AMBALA	NARAYANGARH	S-NPP	76.96334	30.36989	13:06	D	3.50
16	AMBALA	NARAYANGARH	S-NPP	77.08124	30.44020	13:06	D	4.10
17	AMBALA	NARAYANGARH	S-NPP	76.95026	30.46677	13:06	D	3.00
18	AMBALA	NARAYANGARH	S-NPP	77.17016	30.50818	13:06	D	3.70
19	FARIDABAD	HODAL	S-NPP	77.47676	27.89820	13:06	D	9.20
20	FARIDABAD	HODAL	TERRA-1	77.44044	27.90381	11:13	D	7.86
21	FARIDABAD	HODAL	S-NPP	77.41983	27.91968	13:06	D	4.60
22	FARIDABAD	HODAL	S-NPP	77.46844	27.93291	13:06	D	5.10
23	FARIDABAD	HODAL	S-NPP	77.50762	27.93629	13:06	D	8.70
24	FARIDABAD	HODAL	S-NPP	77.42713	27.93722	13:06	D	2.40
25	FARIDABAD	HODAL	S-NPP	77.51215	27.94116	13:06	D	3.10
26	FARIDABAD	HODAL	S-NPP	77.51123	27.94501	13:06	D	2.20
27	FARIDABAD	HODAL	TERRA-1	77.39781	27.99513	11:13	D	9.79
28	FATEHABAD	FATEHABAD	S-NPP	75.43813	29.43538	13:06	D	4.50
29	FATEHABAD	FATEHABAD	S-NPP	75.44259	29.43631	13:06	D	4.50

30	FATEHABAD	FATEHABAD	S-NPP	75.72421	29.52474	13:06	D	14.80
31	FATEHABAD	FATEHABAD	S-NPP	75.36900	29.53914	13:06	D	9.90
32	FATEHABAD	FATEHABAD	S-NPP	75.73808	29.57517	13:06	D	2.80
33	FATEHABAD	FATEHABAD	S-NPP	75.72664	29.58677	13:06	D	1.80
34	FATEHABAD	FATEHABAD	S-NPP	75.79280	29.59175	13:06	D	3.80
35	FATEHABAD	FATEHABAD	S-NPP	75.79152	29.59446	13:06	D	3.80
36	FATEHABAD	RATIA	S-NPP	75.57832	29.61294	13:06	D	4.10
37	FATEHABAD	RATIA	S-NPP	75.57722	29.61708	13:06	D	13.90
38	FATEHABAD	RATIA	S-NPP	75.47491	29.63575	13:06	D	1.80
39	FATEHABAD	RATIA	S-NPP	75.47607	29.63606	13:06	D	2.90
40	FATEHABAD	RATIA	S-NPP	75.43617	29.73328	13:06	D	8.60
41	FATEHABAD	TOHANA	S-NPP	75.87102	29.61454	13:06	D	2.70
42	FATEHABAD	TOHANA	S-NPP	75.68027	29.64233	13:06	D	3.20
43	FATEHABAD	TOHANA	S-NPP	75.78729	29.66392	13:06	D	2.20
44	FATEHABAD	TOHANA	TERRA-1	75.89036	29.69370	11:13	D	21.03
45	FATEHABAD	TOHANA	S-NPP	75.75877	29.70761	13:06	D	6.90
46	FATEHABAD	TOHANA	S-NPP	75.84222	29.70928	13:06	D	11.20
47	FATEHABAD	TOHANA	S-NPP	75.69570	29.72495	13:06	D	2.80
48	FATEHABAD	TOHANA	TERRA-1	75.86478	29.72739	11:13	D	8.99
49	FATEHABAD	TOHANA	S-NPP	75.84122	29.73308	13:06	D	2.80
50	FATEHABAD	TOHANA	S-NPP	75.81251	29.79162	13:06	D	3.80
51	FATEHABAD	TOHANA	S-NPP	75.80084	29.80216	13:06	D	6.10
52	HISAR	HISAR	S-NPP	75.97115	29.47776	13:06	D	3.60
53	HISAR	HISAR	S-NPP	75.79173	29.49091	13:06	D	3.50
54	JHAJJAR	JHAJJAR	S-NPP	76.73355	28.56857	13:06	D	3.80
55	JIND	JIND	S-NPP	76.43676	29.52438	13:06	D	5.80
56	JIND	NARWANA	S-NPP	76.08218	29.48721	13:06	D	11.90
57	JIND	NARWANA	S-NPP	76.01066	29.51125	13:06	D	2.70
58	JIND	NARWANA	S-NPP	76.12730	29.51317	13:06	D	3.40
59	JIND	NARWANA	S-NPP	76.02728	29.51454	13:06	D	3.60
60	JIND	NARWANA	S-NPP	76.02622	29.51859	13:06	D	3.60
61	JIND	NARWANA	S-NPP	76.03760	29.52510	13:06	D	3.90

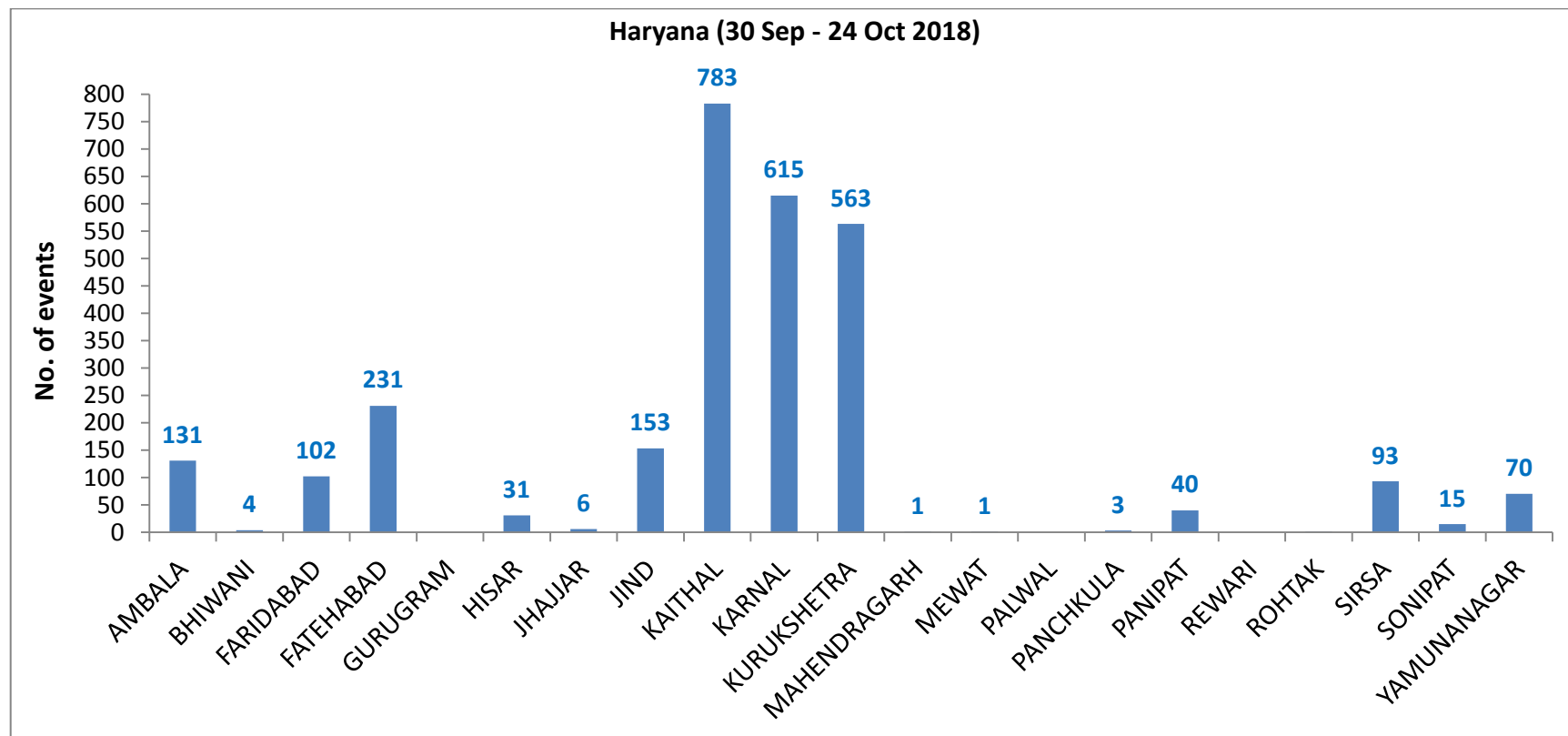
62	JIND	NARWANA	S-NPP	76.03654	29.52914	13:06	D	3.90
63	JIND	NARWANA	S-NPP	76.01869	29.53732	13:06	D	5.80
64	JIND	NARWANA	S-NPP	76.06515	29.54251	13:06	D	41.80
65	JIND	NARWANA	S-NPP	76.06339	29.54293	13:06	D	46.90
66	JIND	NARWANA	S-NPP	76.02795	29.55198	13:06	D	4.20
67	JIND	NARWANA	S-NPP	75.97499	29.55404	13:06	D	1.50
68	JIND	NARWANA	S-NPP	75.98332	29.55573	13:06	D	3.60
69	JIND	NARWANA	S-NPP	75.97395	29.55811	13:06	D	1.50
70	JIND	NARWANA	S-NPP	76.09583	29.57419	13:06	D	6.30
71	JIND	NARWANA	S-NPP	76.19032	29.67290	13:06	D	13.20
72	JIND	NARWANA	S-NPP	76.19010	29.67310	13:06	D	6.20
73	JIND	NARWANA	S-NPP	76.03098	29.70848	13:06	D	1.90
74	JIND	SAFIDON	S-NPP	76.58453	29.44050	13:06	D	11.70
75	JIND	SAFIDON	S-NPP	76.55522	29.45950	13:06	D	4.40
76	KAITHAL	GUHLA	S-NPP	76.20012	29.89787	13:06	D	3.70
77	KAITHAL	GUHLA	S-NPP	76.20019	29.89819	13:06	D	7.60
78	KAITHAL	GUHLA	S-NPP	76.20412	29.89865	13:06	D	3.70
79	KAITHAL	GUHLA	S-NPP	76.40612	29.94202	13:06	D	9.10
80	KAITHAL	GUHLA	S-NPP	76.40372	29.94319	13:06	D	4.60
81	KAITHAL	GUHLA	S-NPP	76.19775	29.95630	13:06	D	2.00
82	KAITHAL	GUHLA	S-NPP	76.37499	29.98300	13:06	D	4.40
83	KAITHAL	GUHLA	S-NPP	76.29913	29.98464	13:06	D	10.90
84	KAITHAL	GUHLA	S-NPP	76.26540	29.98633	13:06	D	1.20
85	KAITHAL	GUHLA	S-NPP	76.29810	29.98859	13:06	D	33.00
86	KAITHAL	GUHLA	S-NPP	76.30206	29.98937	13:06	D	14.30
87	KAITHAL	GUHLA	S-NPP	76.39924	30.00843	13:06	D	4.70
88	KAITHAL	GUHLA	S-NPP	76.30381	30.01463	13:06	D	6.80
89	KAITHAL	GUHLA	S-NPP	76.30279	30.01858	13:06	D	6.80
90	KAITHAL	GUHLA	S-NPP	76.34569	30.04131	13:06	D	4.60
91	KAITHAL	GUHLA	S-NPP	76.34695	30.04372	13:06	D	4.70
92	KAITHAL	GUHLA	S-NPP	76.40626	30.04515	13:06	D	3.00
93	KAITHAL	GUHLA	S-NPP	76.30826	30.04627	13:06	D	1.50

94	KAITHAL	GUHLA	S-NPP	76.30125	30.05733	13:06	D	6.50
95	KAITHAL	GUHLA	S-NPP	76.42249	30.07725	13:06	D	7.90
96	KAITHAL	GUHLA	S-NPP	76.28314	30.09525	13:06	D	3.40
97	KAITHAL	GUHLA	S-NPP	76.40250	30.13100	13:06	D	5.00
98	KAITHAL	GUHLA	S-NPP	76.43140	30.17992	13:06	D	3.80
99	KAITHAL	KAITHAL	S-NPP	76.50254	29.52503	13:06	D	3.80
100	KAITHAL	KAITHAL	S-NPP	76.48544	29.59208	13:06	D	2.50
101	KAITHAL	KAITHAL	S-NPP	76.19415	29.67389	13:06	D	6.20
102	KAITHAL	KAITHAL	S-NPP	76.25954	29.69946	13:06	D	3.20
103	KAITHAL	KAITHAL	S-NPP	76.29769	29.81274	13:06	D	3.40
104	KAITHAL	KAITHAL	S-NPP	76.21769	29.83018	13:06	D	2.90
105	KAITHAL	KAITHAL	S-NPP	76.38120	29.87509	13:06	D	2.30
106	KAITHAL	KAITHAL	S-NPP	76.46204	29.91574	13:06	D	4.10
107	KAITHAL	KAITHAL	S-NPP	76.45825	29.94582	13:06	D	5.60
108	KAITHAL	KAITHAL	S-NPP	76.45395	29.94713	13:06	D	6.50
109	KARNAL	ASSANDH	S-NPP	76.58522	29.52499	13:06	D	4.50
110	KARNAL	ASSANDH	S-NPP	76.57702	29.54217	13:06	D	2.70
111	KARNAL	ASSANDH	S-NPP	76.53169	29.54325	13:06	D	9.00
112	KARNAL	ASSANDH	S-NPP	76.57445	29.54347	13:06	D	9.50
113	KARNAL	ASSANDH	S-NPP	76.55784	29.56082	13:06	D	2.40
114	KARNAL	ASSANDH	S-NPP	76.69481	29.66060	13:06	D	7.30
115	KARNAL	ASSANDH	S-NPP	76.69568	29.66154	13:06	D	6.20
116	KARNAL	KARNAL	S-NPP	76.85143	29.58593	13:06	D	6.70
117	KARNAL	KARNAL	S-NPP	76.85359	29.58688	13:06	D	8.00
118	KARNAL	KARNAL	S-NPP	76.77871	29.70567	13:06	D	3.30
119	KARNAL	NILOKHERI	TERRA-1	76.84872	29.86962	11:13	D	14.99
120	KURUKSHETRA	PEHOWA	S-NPP	76.53743	29.93041	13:06	D	3.40
121	KURUKSHETRA	PEHOWA	TERRA-1	76.52983	29.93400	11:13	D	13.93
122	KURUKSHETRA	PEHOWA	S-NPP	76.54597	29.94437	13:06	D	2.50
123	KURUKSHETRA	PEHOWA	S-NPP	76.62988	29.98402	13:06	D	6.00
124	KURUKSHETRA	PEHOWA	S-NPP	76.63176	29.98541	13:06	D	4.60
125	KURUKSHETRA	PEHOWA	S-NPP	76.67307	30.02510	13:06	D	3.60

126	KURUKSHETRA	PEHOWA	S-NPP	76.64050	30.05945	13:06	D	7.30
127	KURUKSHETRA	PEHOWA	S-NPP	76.64321	30.07218	13:06	D	4.80
128	KURUKSHETRA	PEHOWA	S-NPP	76.64889	30.07327	13:06	D	4.80
129	KURUKSHETRA	PEHOWA	S-NPP	76.65672	30.12745	13:06	D	11.50
130	KURUKSHETRA	PEHOWA	TERRA-1	76.66504	30.14125	11:13	D	11.36
131	KURUKSHETRA	SHAHABAD	S-NPP	76.88713	30.18834	13:06	D	2.70
132	KURUKSHETRA	SHAHABAD	S-NPP	76.79928	30.19150	13:06	D	6.60
133	KURUKSHETRA	SHAHABAD	S-NPP	76.81010	30.21771	13:06	D	5.90
134	KURUKSHETRA	SHAHABAD	S-NPP	76.86090	30.22338	13:06	D	4.40
135	KURUKSHETRA	SHAHABAD	S-NPP	76.83685	30.22682	13:06	D	6.30
136	KURUKSHETRA	THANESAR	S-NPP	76.77046	30.06027	13:06	D	3.80
137	KURUKSHETRA	THANESAR	S-NPP	76.75340	30.08123	13:06	D	4.40
138	PANIPAT	SAMALKHA	S-NPP	77.01672	29.30339	01:48	N	0.50
139	SIRSA	DABWALI	S-NPP	74.56381	29.87733	13:06	D	3.60
140	SIRSA	DABWALI	TERRA-1	74.76488	29.94298	11:13	D	8.09
141	SIRSA	DABWALI	S-NPP	74.73423	30.01358	13:06	D	2.40
142	SIRSA	ELLENABAD	S-NPP	74.87998	29.42297	13:06	D	2.20
143	SIRSA	ELLENABAD	S-NPP	74.68343	29.47257	13:06	D	3.30
144	SIRSA	ELLENABAD	S-NPP	74.68595	29.47407	13:06	D	4.30
145	SIRSA	RANIA	S-NPP	74.77781	29.49775	13:06	D	2.50
146	SIRSA	RANIA	S-NPP	74.77990	29.49789	13:06	D	4.00
147	SIRSA	RANIA	S-NPP	74.60192	29.62470	13:06	D	3.50
148	SIRSA	SIRSA	S-NPP	74.94324	29.41361	13:06	D	3.50
149	SIRSA	SIRSA	S-NPP	74.98824	29.52211	01:48	N	0.70
150	SIRSA	SIRSA	S-NPP	74.94857	29.52391	13:06	D	4.50
151	SIRSA	SIRSA	S-NPP	74.95013	29.52513	13:06	D	3.00
152	SIRSA	SIRSA	S-NPP	75.28992	29.53162	13:06	D	4.40
153	SIRSA	SIRSA	S-NPP	75.29446	29.53256	13:06	D	4.40
154	SIRSA	SIRSA	S-NPP	74.94981	29.53779	13:06	D	6.40
155	SIRSA	SIRSA	S-NPP	74.95457	29.53876	13:06	D	7.90
156	SIRSA	SIRSA	S-NPP	74.95139	29.53903	13:06	D	11.10
157	SIRSA	SIRSA	S-NPP	75.01456	29.55294	01:48	N	0.60

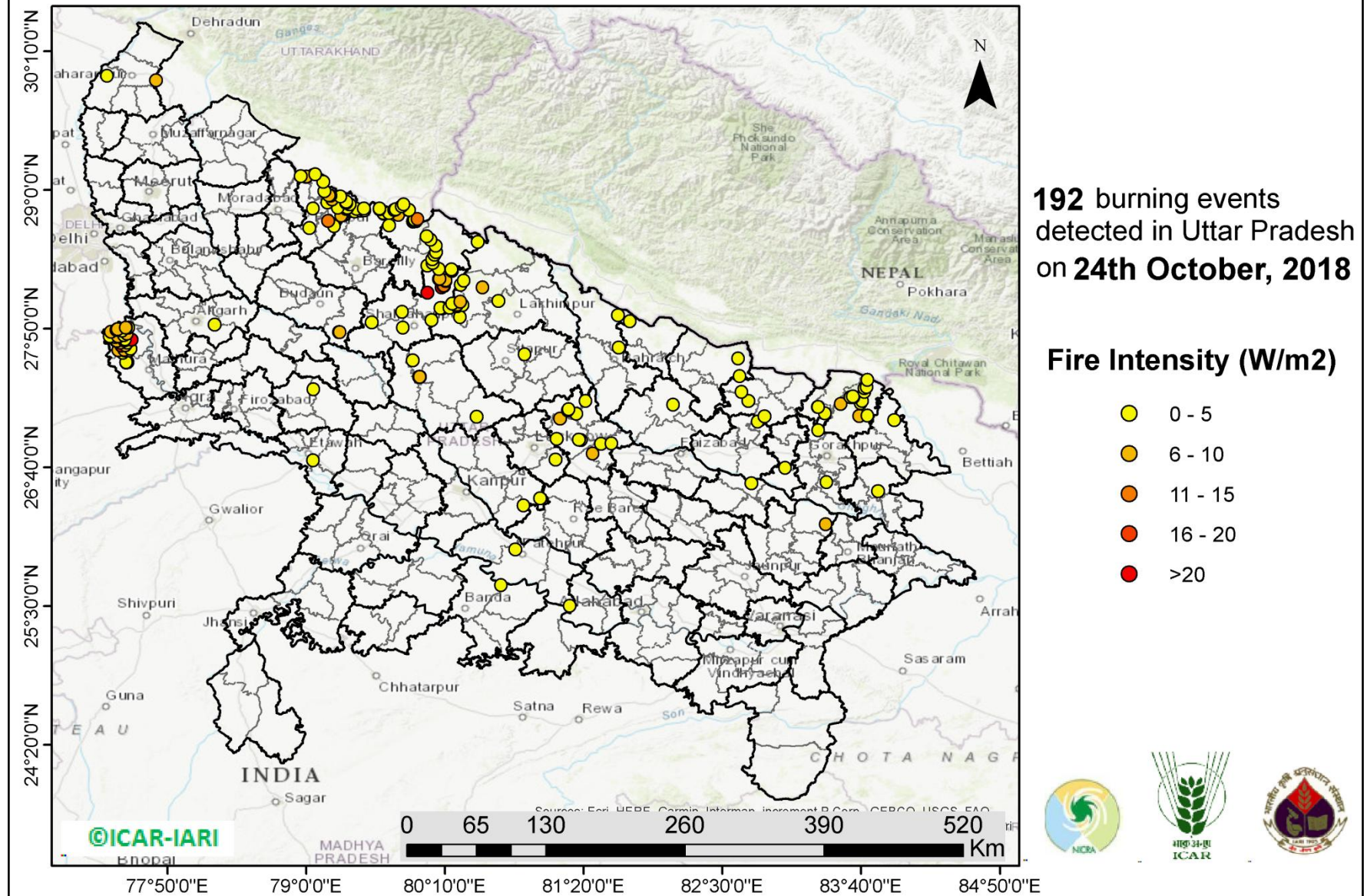
158	SIRSA	SIRSA	S-NPP	74.98920	29.62480	01:48	N	0.70
159	SIRSA	SIRSA	S-NPP	75.13620	29.70094	13:06	D	12.10
160	SIRSA	SIRSA	S-NPP	75.09350	29.82873	13:06	D	11.00
161	SIRSA	SIRSA	S-NPP	74.98678	29.86050	13:06	D	9.30
162	SONIPAT	KHARKHODA	S-NPP	76.92789	28.91693	01:48	N	1.20
163	SONIPAT	KHARKHODA	S-NPP	76.93062	28.91846	01:48	N	1.10
164	YAMUNANAGAR	CHHACHHRAULII	S-NPP	77.41101	30.22933	13:06	D	2.70
165	YAMUNANAGAR	JAGADHRI	TERRA-1	77.18636	30.13313	11:13	D	10.81
166	YAMUNANAGAR	JAGADHRI	TERRA-1	77.39440	30.16756	11:13	D	8.60

District-wise cumulative number of residue burning events in Haryana (30-Sep-2018 to 24-Oct-2018)



(c) Uttar Pradesh

PADDY RESIDUE BURNING IN UTTAR PRADESH



Details of residue burning events in Uttar Pradesh on 24-Oct-2018

Event S. No.	District	Tehsil / Block	Satellite	Longitude	Latitude	Time (IST)	Day/Night	Fire Power (W/m²)
1	ALIGARH	KOL	S-NPP	78.22983	27.86809	13:06:00	D	1.90
2	AMBEDKARNAGAR	TANDA	S-NPP	82.74249	26.53457	13:06:00	D	2.30
3	AZAMGARH	SAGRI	S-NPP	83.37052	26.18956	13:06:00	D	9.70
4	BADAUN	DATAGANJ	S-NPP	79.27602	27.80404	13:06:00	D	4.00
5	BADAUN	DATAGANJ	S-NPP	79.28056	27.80484	13:06:00	D	6.90
6	BAHRAICH	BAHRAICH	S-NPP	81.62663	27.67516	13:06:00	D	2.00
7	BAHRAICH	NANPARA	S-NPP	81.62242	27.94535	13:06:00	D	2.00
8	BALRAMPUR	TULSIPUR	S-NPP	82.64465	27.43356	13:06:00	D	3.80
9	BALRAMPUR	TULSIPUR	S-NPP	82.63183	27.58385	13:06:00	D	2.40
10	BANDA	BANDA	S-NPP	80.63831	25.67410	01:48:00	N	0.30
11	BANDA	BANDA	S-NPP	80.63895	25.67740	01:48:00	N	0.40
12	BARABANKI	FATEHPUR	S-NPP	81.13431	27.07785	13:06:00	D	7.80
13	BARABANKI	FATEHPUR	S-NPP	81.27175	27.11842	13:06:00	D	2.60
14	BARABANKI	FATEHPUR	S-NPP	81.19962	27.14821	13:06:00	D	1.90
15	BARABANKI	FATEHPUR	S-NPP	81.20627	27.15623	13:06:00	D	1.80
16	BARABANKI	FATEHPUR	S-NPP	81.34911	27.22432	13:06:00	D	1.00
17	BARABANKI	FATEHPUR	S-NPP	81.34909	27.22607	13:06:00	D	2.20
18	BARABANKI	H AidARGARH	S-NPP	81.40793	26.78242	13:06:00	D	5.30
19	BARABANKI	NAWABGANJ	S-NPP	81.30723	26.89666	13:06:00	D	4.80
20	BARABANKI	NAWABGANJ	S-NPP	81.29391	26.90141	13:06:00	D	2.60
21	BARABANKI	NAWABGANJ	S-NPP	81.10665	26.90539	13:06:00	D	1.10
22	BARABANKI	RAMSANEHIGHAT	S-NPP	81.56670	26.86848	13:06:00	D	3.00
23	BARABANKI	SIR AULI GAUSPUR	S-NPP	81.47779	26.86447	13:06:00	D	0.70
24	BAREILLY	BAHERI	S-NPP	79.65311	28.79908	13:06:00	D	11.90
25	BAREILLY	BAHERI	S-NPP	79.64725	28.80523	13:06:00	D	3.20
26	BAREILLY	BAHERI	S-NPP	79.40771	28.81770	13:06:00	D	2.90
27	BAREILLY	BAHERI	S-NPP	79.46072	28.82688	13:06:00	D	3.20
28	BAREILLY	BAHERI	S-NPP	79.48791	28.82798	13:06:00	D	2.10

29	BAREILLY	BAHERI	S-NPP	79.61710	28.83950	13:06:00	D	2.10
30	BAREILLY	BAHERI	S-NPP	79.42516	28.84242	13:06:00	D	2.30
31	BAREILLY	BAHERI	S-NPP	79.61634	28.84296	13:06:00	D	2.10
32	BAREILLY	BAHERI	S-NPP	79.48405	28.84535	13:06:00	D	3.00
33	DEORIA	DEORIA	S-NPP	83.80791	26.46700	13:06:00	D	2.50
34	ETAWAH	ETAWAH	S-NPP	79.05779	26.72541	13:06:00	D	3.80
35	FATEHPUR	FATEHPUR	S-NPP	80.75914	25.97834	13:06:00	D	3.50
36	FATEHPUR	KHAGA	S-NPP	81.21719	25.50133	13:06:00	D	3.50
37	GONDA	GONDA	S-NPP	82.08738	27.19549	13:06:00	D	2.90
38	GORAKHPUR	BANSGAON	S-NPP	83.37698	26.54260	13:06:00	D	2.30
39	GORAKHPUR	CAMPIERGANJ	S-NPP	83.30550	26.97839	13:06:00	D	2.80
40	HARDOI	HARDOI	S-NPP	79.94949	27.42742	13:06:00	D	7.50
41	HARDOI	HARDOI	S-NPP	79.95104	27.42871	13:06:00	D	13.70
42	HARDOI	HARDOI	S-NPP	79.95815	27.42889	13:06:00	D	10.10
43	HARDOI	HARDOI	S-NPP	79.95537	27.42946	13:06:00	D	5.10
44	HARDOI	SANDILA	S-NPP	80.43276	27.09436	13:06:00	D	2.50
45	HARDOI	SHAHABAD	S-NPP	79.89506	27.56720	13:06:00	D	2.10
46	KHERI	GOLA	S-NPP	80.29305	27.92993	13:06:00	D	1.90
47	KHERI	GOLA	S-NPP	80.48260	28.17955	13:06:00	D	9.00
48	KHERI	GOLA	S-NPP	80.30138	28.20187	13:06:00	D	3.80
49	KHERI	GOLA	S-NPP	80.32409	28.23740	13:06:00	D	2.60
50	KHERI	LAKHIMPUR	S-NPP	80.61668	28.06504	13:06:00	D	2.60
51	KHERI	MOHMADI	S-NPP	80.05272	27.90662	13:06:00	D	2.60
52	KHERI	MOHMADI	S-NPP	80.14621	28.00436	13:06:00	D	4.20
53	KHERI	MOHMADI	S-NPP	80.14218	28.00564	13:06:00	D	3.90
54	KHERI	MOHMADI	S-NPP	80.20611	28.01085	13:06:00	D	2.60
55	KHERI	MOHMADI	S-NPP	80.26923	28.02141	13:06:00	D	2.20
56	KHERI	MOHMADI	S-NPP	80.27200	28.03137	13:06:00	D	3.50
57	KHERI	MOHMADI	S-NPP	80.31531	28.03167	13:06:00	D	3.10
58	KHERI	MOHMADI	S-NPP	80.26708	28.03407	13:06:00	D	5.90
59	KHERI	MOHMADI	S-NPP	80.22562	28.04472	13:06:00	D	3.30
60	KHERI	MOHMADI	S-NPP	80.29623	28.06023	13:06:00	D	6.00

61	KHERI	PALIA KALAN	S-NPP	80.44221	28.56179	13:06:00	D	2.10
62	KUSHINAGAR	PADRAUNA	S-NPP	83.94336	27.06492	13:06:00	D	1.90
63	LACKNOW	MOHANLAL GANJ	S-NPP	81.09555	26.73166	13:06:00	D	3.80
64	MAHARAJGANJ	MAHARAJGANJ	S-NPP	83.65157	27.09978	13:06:00	D	6.00
65	MAHARAJGANJ	MAHARAJGANJ	S-NPP	83.49734	27.19924	13:06:00	D	6.30
66	MAHARAJGANJ	MAHARAJGANJ	S-NPP	83.66462	27.20659	13:06:00	D	4.20
67	MAHARAJGANJ	MAHARAJGANJ	S-NPP	83.59908	27.25719	13:06:00	D	2.50
68	MAHARAJGANJ	MAHARAJGANJ	S-NPP	83.57890	27.25768	13:06:00	D	2.30
69	MAHARAJGANJ	MAHARAJGANJ	S-NPP	83.59788	27.26384	13:06:00	D	3.50
70	MAHARAJGANJ	NICHLAUL	S-NPP	83.71936	27.10280	13:06:00	D	2.20
71	MAHARAJGANJ	NICHLAUL	S-NPP	83.67730	27.22551	13:06:00	D	1.70
72	MAHARAJGANJ	NICHLAUL	S-NPP	83.69563	27.30189	13:06:00	D	2.40
73	MAHARAJGANJ	NICHLAUL	S-NPP	83.69415	27.33243	13:06:00	D	3.40
74	MAHARAJGANJ	NICHLAUL	S-NPP	83.71262	27.34194	13:06:00	D	3.70
75	MAHARAJGANJ	NICHLAUL	S-NPP	83.72186	27.40372	13:06:00	D	2.00
76	MAHARAJGANJ	PHARENDA	S-NPP	83.36357	27.12171	13:06:00	D	1.80
77	MAHARAJGANJ	PHARENDA	S-NPP	83.30212	27.17389	13:06:00	D	2.20
78	MAHARAJGANJ	PHARENDA	S-NPP	83.30600	27.17446	13:06:00	D	2.20
79	MAINPURI	MAINPURI	S-NPP	79.05962	27.32254	13:06:00	D	1.80
80	MATHURA	CHHATA	S-NPP	77.45893	27.63187	13:06:00	D	3.20
81	MATHURA	CHHATA	S-NPP	77.47824	27.64777	13:06:00	D	3.90
82	MATHURA	CHHATA	S-NPP	77.51221	27.65029	13:06:00	D	7.10
83	MATHURA	CHHATA	S-NPP	77.41917	27.65261	13:06:00	D	6.30
84	MATHURA	CHHATA	S-NPP	77.47088	27.65446	13:06:00	D	10.00
85	MATHURA	CHHATA	S-NPP	77.52042	27.66400	13:06:00	D	3.30
86	MATHURA	CHHATA	S-NPP	77.44504	27.69004	13:06:00	D	34.00
87	MATHURA	CHHATA	S-NPP	77.47913	27.69248	13:06:00	D	9.20
88	MATHURA	CHHATA	S-NPP	77.49652	27.71600	13:06:00	D	2.70
89	MATHURA	CHHATA	S-NPP	77.43853	27.71718	13:06:00	D	9.20
90	MATHURA	CHHATA	S-NPP	77.40387	27.73015	13:06:00	D	10.10
91	MATHURA	CHHATA	S-NPP	77.40051	27.73030	13:06:00	D	4.10
92	MATHURA	CHHATA	S-NPP	77.40609	27.73135	13:06:00	D	5.60

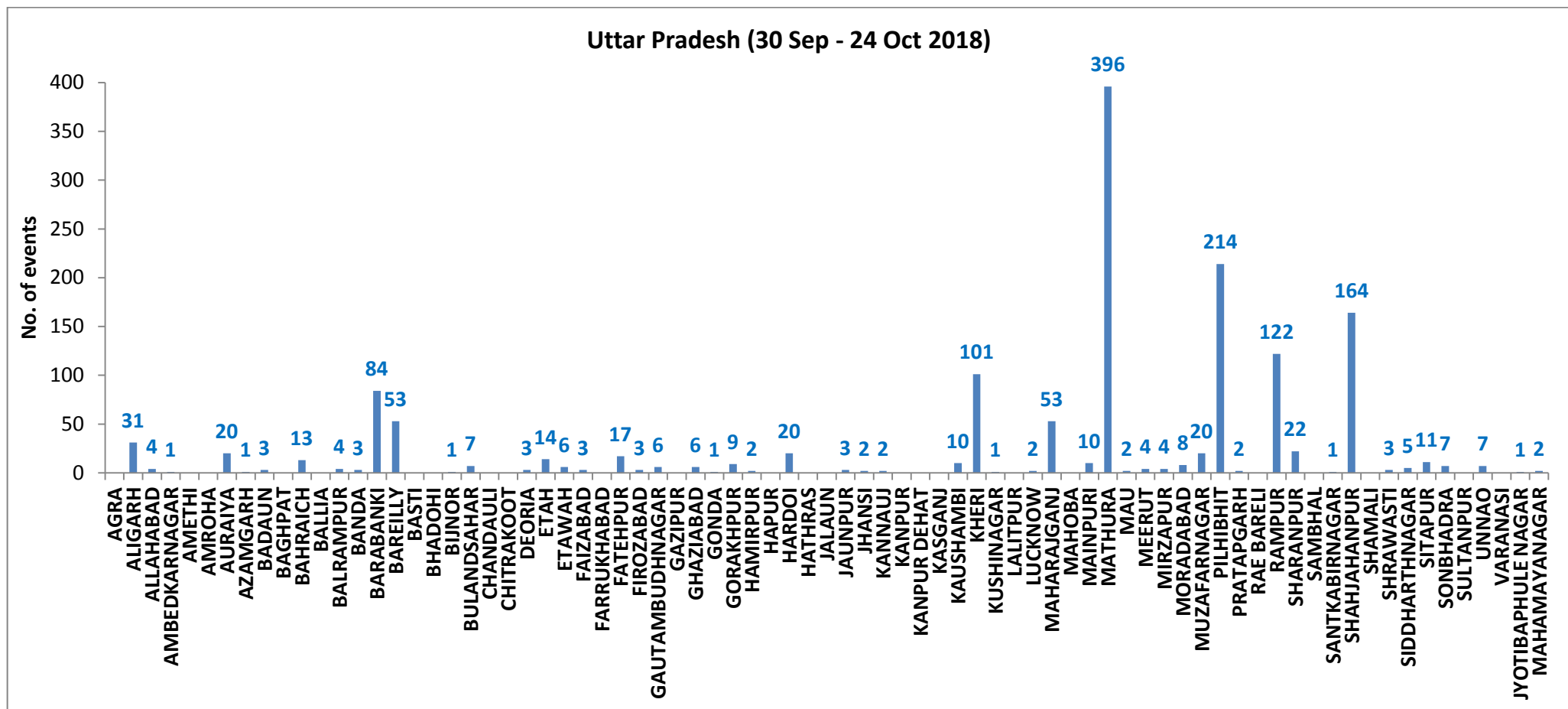
93	MATHURA	CHHATA	S-NPP	77.47207	27.73530	13:06:00	D	4.90
94	MATHURA	CHHATA	S-NPP	77.47443	27.73609	13:06:00	D	2.70
95	MATHURA	CHHATA	TERRA-1	77.53082	27.74061	11:13:00	D	38.76
96	MATHURA	CHHATA	S-NPP	77.47809	27.74486	13:06:00	D	3.50
97	MATHURA	CHHATA	S-NPP	77.38995	27.76403	13:06:00	D	4.50
98	MATHURA	CHHATA	S-NPP	77.41864	27.76549	13:06:00	D	8.90
99	MATHURA	CHHATA	S-NPP	77.34812	27.76820	13:06:00	D	2.70
100	MATHURA	CHHATA	S-NPP	77.41770	27.76937	13:06:00	D	5.10
101	MATHURA	CHHATA	S-NPP	77.46741	27.77891	13:06:00	D	2.30
102	MATHURA	CHHATA	S-NPP	77.49306	27.79189	13:06:00	D	7.10
103	MATHURA	CHHATA	S-NPP	77.35644	27.80641	13:06:00	D	7.70
104	MATHURA	CHHATA	S-NPP	77.45262	27.81653	13:06:00	D	2.60
105	MATHURA	CHHATA	S-NPP	77.40466	27.82365	13:06:00	D	5.40
106	MATHURA	CHHATA	S-NPP	77.40927	27.82857	13:06:00	D	10.20
107	MATHURA	CHHATA	S-NPP	77.41263	27.82920	13:06:00	D	6.90
108	MATHURA	CHHATA	S-NPP	77.50389	27.84235	13:06:00	D	4.60
109	MATHURA	CHHATA	S-NPP	77.48651	27.84311	13:06:00	D	10.10
110	MATHURA	CHHATA	S-NPP	77.48418	27.84313	13:06:00	D	7.50
111	MATHURA	MATHURA	S-NPP	77.48704	27.54806	13:06:00	D	4.30
112	MATHURA	MATHURA	S-NPP	77.49809	27.55019	13:06:00	D	5.60
113	MATHURA	MATHURA	S-NPP	77.48611	27.55194	13:06:00	D	4.30
114	MORADABAD	MORADABAD	S-NPP	78.95363	29.11490	13:06:00	D	2.70
115	PILHIBHIT	PILHIBHIT	S-NPP	79.69558	28.70141	13:06:00	D	1.80
116	PILHIBHIT	PILHIBHIT	S-NPP	79.89841	28.73289	13:06:00	D	2.00
117	PILHIBHIT	PILHIBHIT	S-NPP	79.92400	28.73729	13:06:00	D	8.10
118	PILHIBHIT	PILHIBHIT	AQUA-1	79.89909	28.73834	12:47:00	D	40.35
119	PILHIBHIT	PILHIBHIT	S-NPP	79.90545	28.74122	13:06:00	D	8.10
120	PILHIBHIT	PILHIBHIT	S-NPP	79.90044	28.74392	13:06:00	D	7.80
121	PILHIBHIT	PILHIBHIT	S-NPP	79.91323	28.74611	13:06:00	D	3.50
122	PILHIBHIT	PILHIBHIT	S-NPP	79.91248	28.74954	13:06:00	D	3.50
123	PILHIBHIT	PILHIBHIT	S-NPP	79.93730	28.75734	13:06:00	D	14.80
124	PILHIBHIT	PILHIBHIT	S-NPP	79.77467	28.79015	13:06:00	D	5.20

125	PILHIBHIT	PILHIBHIT	S-NPP	79.69645	28.80661	13:06:00	D	3.60
126	PILHIBHIT	PILHIBHIT	S-NPP	79.86058	28.83142	13:06:00	D	4.20
127	PILHIBHIT	PILHIBHIT	S-NPP	79.74017	28.83206	13:06:00	D	2.80
128	PILHIBHIT	PILHIBHIT	S-NPP	79.86485	28.83216	13:06:00	D	4.20
129	PILHIBHIT	PILHIBHIT	S-NPP	79.74879	28.83355	13:06:00	D	5.20
130	PILHIBHIT	PILHIBHIT	S-NPP	79.75233	28.83773	13:06:00	D	4.90
131	PILHIBHIT	PILHIBHIT	S-NPP	79.80445	28.86453	13:06:00	D	4.60
132	PILHIBHIT	PILHIBHIT	S-NPP	79.81935	28.87777	13:06:00	D	3.30
133	PILHIBHIT	PURANPUR	S-NPP	80.22193	28.33232	13:06:00	D	3.40
134	PILHIBHIT	PURANPUR	S-NPP	80.06254	28.38613	13:06:00	D	2.30
135	PILHIBHIT	PURANPUR	S-NPP	80.05856	28.41644	01:48:00	N	1.40
136	PILHIBHIT	PURANPUR	S-NPP	80.07978	28.45504	13:06:00	D	4.80
137	PILHIBHIT	PURANPUR	S-NPP	80.09225	28.47843	13:06:00	D	2.60
138	PILHIBHIT	PURANPUR	S-NPP	80.08963	28.53112	13:06:00	D	4.70
139	PILHIBHIT	PURANPUR	S-NPP	80.04420	28.58285	13:06:00	D	3.50
140	PILHIBHIT	PURANPUR	S-NPP	80.01208	28.60934	13:06:00	D	2.80
141	RAMPUR	BILASPUR	S-NPP	79.29518	28.78357	13:06:00	D	5.10
142	RAMPUR	BILASPUR	S-NPP	79.33447	28.84148	13:06:00	D	4.60
143	RAMPUR	BILASPUR	S-NPP	79.33694	28.84532	13:06:00	D	7.90
144	RAMPUR	BILASPUR	S-NPP	79.33813	28.84576	13:06:00	D	4.60
145	RAMPUR	BILASPUR	S-NPP	79.34624	28.85083	13:06:00	D	4.30
146	RAMPUR	BILASPUR	S-NPP	79.26733	28.85143	13:06:00	D	2.90
147	RAMPUR	BILASPUR	S-NPP	79.36298	28.87916	13:06:00	D	3.40
148	RAMPUR	BILASPUR	S-NPP	79.33687	28.89272	13:06:00	D	5.40
149	RAMPUR	BILASPUR	S-NPP	79.17837	28.89412	13:06:00	D	5.00
150	RAMPUR	BILASPUR	S-NPP	79.33530	28.89970	13:06:00	D	2.70
151	RAMPUR	BILASPUR	S-NPP	79.21940	28.91950	13:06:00	D	6.30
152	RAMPUR	BILASPUR	S-NPP	79.28899	28.94580	13:06:00	D	5.80
153	RAMPUR	BILASPUR	S-NPP	79.28788	28.94591	13:06:00	D	4.40
154	RAMPUR	MILAK	S-NPP	79.23348	28.69697	13:06:00	D	3.10
155	RAMPUR	MILAK	S-NPP	79.18394	28.73845	13:06:00	D	10.20
156	RAMPUR	RAMPUR	S-NPP	79.02673	28.68103	13:06:00	D	1.80

157	RAMPUR	RAMPUR	S-NPP	79.05790	28.84363	13:06:00	D	4.40
158	RAMPUR	SUAR	S-NPP	79.20376	28.95255	13:06:00	D	3.30
159	RAMPUR	SUAR	S-NPP	79.18949	28.95367	13:06:00	D	8.00
160	RAMPUR	SUAR	S-NPP	79.15296	28.99104	13:06:00	D	3.30
161	RAMPUR	SUAR	S-NPP	79.14146	29.06891	13:06:00	D	2.70
162	RAMPUR	SUAR	S-NPP	79.07719	29.13331	13:06:00	D	2.10
163	RAMPUR	TANDA	S-NPP	79.00014	29.10996	13:06:00	D	5.10
164	RAMPUR	TANDA	S-NPP	79.00166	29.11248	13:06:00	D	5.70
165	SANTKABIRNAGAR	GHANGHATA	S-NPP	83.02693	26.66249	13:06:00	D	2.90
166	SHAHJAHANPUR	JALALABAD	S-NPP	79.55211	27.88521	13:06:00	D	3.30
167	SHAHJAHANPUR	PUWANYA	S-NPP	80.12875	28.00689	13:06:00	D	4.70
168	SHAHJAHANPUR	PUWANYA	TERRA-1	80.01880	28.13737	11:13:00	D	34.93
169	SHAHJAHANPUR	PUWANYA	S-NPP	80.14021	28.18180	13:06:00	D	20.90
170	SHAHJAHANPUR	PUWANYA	S-NPP	80.15563	28.19149	13:06:00	D	11.40
171	SHAHJAHANPUR	PUWANYA	S-NPP	80.15985	28.19220	13:06:00	D	11.00
172	SHAHJAHANPUR	PUWANYA	S-NPP	80.15490	28.19491	13:06:00	D	11.40
173	SHAHJAHANPUR	PUWANYA	S-NPP	80.15911	28.19562	13:06:00	D	11.00
174	SHAHJAHANPUR	PUWANYA	S-NPP	80.17296	28.23562	13:06:00	D	4.10
175	SHAHJAHANPUR	PUWANYA	S-NPP	80.17223	28.23904	13:06:00	D	7.60
176	SHAHJAHANPUR	PUWANYA	S-NPP	80.11720	28.25094	13:06:00	D	4.50
177	SHAHJAHANPUR	PUWANYA	S-NPP	80.12141	28.25166	13:06:00	D	5.20
178	SHAHJAHANPUR	PUWANYA	AQUA-1	80.22514	28.31853	12:47:00	D	30.03
179	SHAHJAHANPUR	PUWANYA	S-NPP	80.11739	28.33515	13:06:00	D	2.60
180	SHAHJAHANPUR	PUWANYA	S-NPP	80.01880	28.36450	13:06:00	D	2.20
181	SHAHJAHANPUR	SHAHJAHANPUR	S-NPP	79.81190	27.84345	13:06:00	D	2.80
182	SHAHJAHANPUR	SHAHJAHANPUR	S-NPP	79.80640	27.97634	13:06:00	D	2.20
183	SHARANPUR	NAKUR	S-NPP	77.32425	29.95948	13:06:00	D	2.70
184	SHARANPUR	SHARANPUR	S-NPP	77.73553	29.92363	13:06:00	D	5.10
185	SHRAWASTI	BHINGA	S-NPP	81.72117	27.89677	13:06:00	D	1.90
186	SIDDHARTHANAGAR	BANSI	S-NPP	82.79621	27.05055	13:06:00	D	2.50
187	SIDDHARTHANAGAR	BANSI	S-NPP	82.85500	27.09681	13:06:00	D	2.40
188	SIDDHARTHANAGAR	ITWA	S-NPP	82.71944	27.22492	13:06:00	D	4.00

189	SIDDHARTHNAGAR	ITWA	S-NPP	82.66127	27.30101	13:06:00	D	1.70
190	SITAPUR	LAHARPUR	S-NPP	80.83861	27.61827	13:06:00	D	3.20
191	UNNAO	BIGHAPUR	S-NPP	80.82678	26.34767	13:06:00	D	2.00
192	UNNAO	PURWA	S-NPP	80.96765	26.40578	13:06:00	D	2.20

District-wise cumulative number of residue burning events in Uttar Pradesh (30-Sep-2018 to 24-Oct-2018)



State wise, date wise and district-wise number of residue burning events detected in 2017 and 2018
(Period: 30-Sep-2018 to 24-Oct-2018)

Date	Punjab		Haryana		UP		Total	
	2017	2018	2017	2018	2017	2018	2017	2018
30-Sep-18	--	11	---	7	---	13	---	31
1-Oct-18	54	16	13	9	2	11	69	36
2-Oct-18	50	9	27	23	8	21	85	53
3-Oct-18	62	4	40	9	17	12	119	25
4-Oct-18	103	32	60	16	22	5	185	53
5-Oct-18	106	56	68	30	20	10	194	96
6-Oct-18	138	87	75	65	39	13	252	165
7-Oct-18	105	162	97	180	31	69	233	411
8-Oct-18	215	39	218	40	75	54	508	133
9-Oct-18	163	75	148	47	87	32	398	154
10-Oct-18	164	23	151	37	126	21	441	81
11-Oct-18	177	30	87	78	74	24	338	132
12-Oct-18	342	67	123	133	51	22	516	222
13-Oct-18	470	62	207	147	69	61	746	270
14-Oct-18	582	112	333	153	137	57	1052	322
15-Oct-18	943	90	458	110	237	35	1638	235
16-Oct-18	465	174	186	138	71	20	722	332
17-Oct-18	807	272	244	268	69	94	1120	634
18-Oct-18	970	263	306	255	108	163	1384	681

19-Oct-18	1591	254	541	208	128	108	2260	570
20-Oct-18	2653	496	597	141	255	49	3505	686
21-Oct-18	1139	618	233	217	168	66	1540	901
22-Oct-18	1356	656	186	134	151	149	1693	939
23-Oct-18	994	1113	155	232	72	193	1221	1538
24-Oct-18	1714	844	244	166	171	192	2129	1202
Total	15363	5565	4797	2843	2192	1494	22352	9902

(a) Punjab

Districts	01 - 24 Oct	
	2017	2018
AMRITSAR	917	747
BARNALA	81	43
BATHINDA	1158	314
FARIDKOT	1459	326
FATEHGARH SAHIB	676	143
FAZILKA	0	0
FIROZPUR	2128	675
GURDASPUR	683	251
HOSHIARPUR	156	11
JALANDHAR	656	134
KAPURTHALA	472	46
LUDHIANA	868	145
MANSA	426	240
MOGA	222	66
MUKTSAR	1110	372
NAWASHAHR	199	13
PATHANKOT	0	0
PATIALA	1551	721
RUPNAGAR	80	4
SANGRUR	538	250
SAS NAGAR	89	72
TARN TARAN	1815	949
SBS NAGAR	79	43
Total	15363	5565

(b) Haryana

Districts	01 -24 Oct	
	2017	2018
AMBALA	337	113
BHIWANI	3	4
FARIDABAD	126	93
FATEHABAD	480	207
GURUGRAM	0	0
HISAR	43	29
JHAJJAR	4	5
JIND	229	132
KAITHAL	1018	750
KARNAL	1179	604
KURUKSHETRA	989	545
MAHENDRAGARH	0	1
MEWAT	0	1
PALWAL	0	0
PANCHKULA	0	3
PANIPAT	40	39
REWARI	0	0
ROHTAK	4	1
SIRSA	132	70
SONIPAT	21	13
YAMUNANAGAR	192	67
Total	4797	2843

(c) Uttar Pradesh

Districts	01 - 24 Oct		FIROZABAD	2	3	PRATAPGARH	0	2
	2017	2018						
AGRA	0	0	GAZIPUR	0	0	RAMPUR	361	122
ALIGARH	27	31	GHAZIABAD	6	6	SHARANPUR	49	22
ALLAHABAD	0	4	GONDA	2	1	SAMBHAL	0	0
AMBEDKAR NAGAR	4	1	GORAKHPUR	4	9	SANTKABIR NAGAR	1	1
AMETHI	0	0	HAMIRPUR	0	2	SHAHJAHANPUR	479	164
AMROHA	0	0	HAPUR	0	0	SHAMALI	0	0
AURAIYA	67	20	HARDOI	26	20	SHRAWASTI	6	3
AZAMGARH	0	1	HATHRAS	0	0	SIDDHARTH NAGAR	2	5
BADAUN	1	3	JALAUN	0	0	SITAPUR	20	11
BAGHPAT	0	0	JAUNPUR	0	3	SONBHADRA	1	7
BAHRAICH	7	13	JHANSI	0	2	SULTANPUR	0	0
BALLIA	0	0	KANNAUJ	2	2	UNNAO	4	7
BALRAMPUR	0	4	KANPUR	3	0	VARANASI	0	0
BANDA	1	3	KANPUR DEHAT	1	0	JYOTIBAPHULE NAGAR	1	1
BARABANKI	50	84	KASGANJ	0	0	MAHAMAYA NAGAR	1	2
BAREILLY	79	53	KAUSHAMBI	5	10	Total	2192	1494
BASTI	2	0	KHERI	129	101			
BHADOHI	0	0	KUSHINAGAR	1	1			
BIJNOR	6	1	LALITPUR	0	0			
BULANDSAHAR	9	7	LUCKNOW	6	2			
CHANDAULI	0	0	MAHARAJGANJ	39	53			
CHITRAKOOT	0	0	MAHOBA	0	0			
DEORIA	1	3	MAINPURI	10	10			
ETAH	12	14	MATHURA	251	396			
ETAWAH	11	6	MAU	0	2			
FAIZABAD	1	3	MEERUT	14	4			
FARRUKHABAD	0	0	MIRZAPUR	3	4			
FATEHPUR	8	17	MORADABAD	12	8			
			MUZAFARNAGAR	63	20			
			PILHIBHIT	396	214			

The study used images received from following Satellites at IARI Satellite Ground Station

S. No.	Satellite Name	Sensor	Resolution (meter)	Day / Night Passes
1.	Suomi NPP	VIIRS	375 / 1000	Both
2.	Terra	MODIS	1000	Both
3.	Aqua	MODIS	1000	Both
4.	NOAA – 18	AVHRR	1000	Night
5.	NOAA – 19	AVHRR	1000	Night
6.	Metop - 1	AVHRR	1000	Night
7.	Metop - 2	AVHRR	1000	Night

Study Team

ICAR – HQ	Dr K. Alagusundaram	DDG (Agril. Engg.)	ddgengg@icar.org.in
	Dr S. Bhaskar	ADG (NRM)	adgagroandaf@gmail.com
ICAR - IARI	Dr V.K. Sehgal	Professor & Nodal Scientist	iaricreams@gmail.com vk.sehgal@icar.gov.in
	Dr Rajkumar Dhakar	Scientist	rajdhakar.iari@gmail.com
	Shri Rakeshwar Verma	Chief Technical Officer	rakeshwar.verma@icar.gov.in
	Mr Aakash Chhabra	SRF (NICRA)	aakash.chhabra7489@gmail.com
ICAR - ATARI	Dr Rajbir Singh	Director ATARI (Zone-1)	rajbirsingh.zpd@gmail.com
	Dr U.S. Gautam	Director ATARI (Zone-IV)	zpdicarkanpur@gmail.com
ICAR - IASRI	Dr RajenderParsad	Principal Scientist	rajender.parsad@icar.gov.in

GIS Maps of fire events can be visualized online on ICAR KRISHI Geoportal

websites:<http://geoportal.icar.gov.in:8080/geoexplorer/composer/>

<http://creams.iari.res.in:8080/geoexplorer/composer/>
