



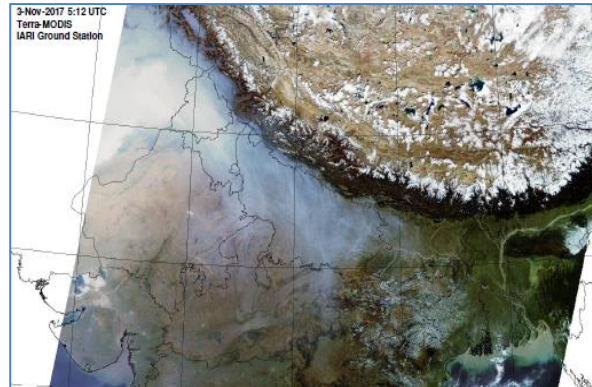
Bulletin No. 48

Events Date:
17-Nov-2020

Issued on:
18-Nov-2020



MONITORING PADDY RESIDUE BURNING IN NORTH INDIA USING SATELLITE REMOTE SENSING DURING 2020



Prepared by:

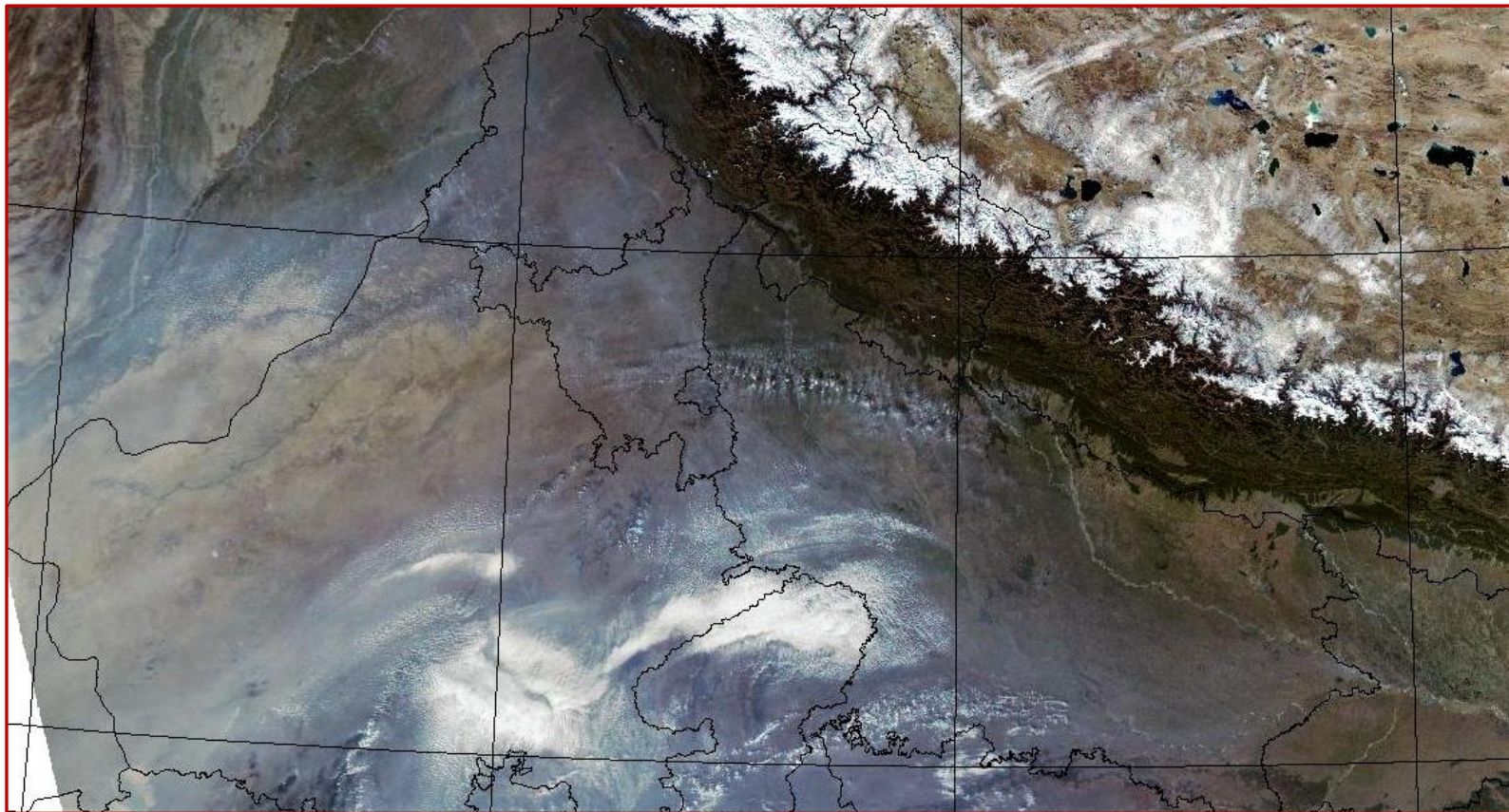
Consortium for Research on Agroecosystem Monitoring and Modeling from Space (CREAMS) Laboratory,
Division of Agricultural Physics, ICAR – Indian Agricultural Research Institute, New Delhi – 110012

<http://creams.iari.res.in>

Highlights for 17-November-2020

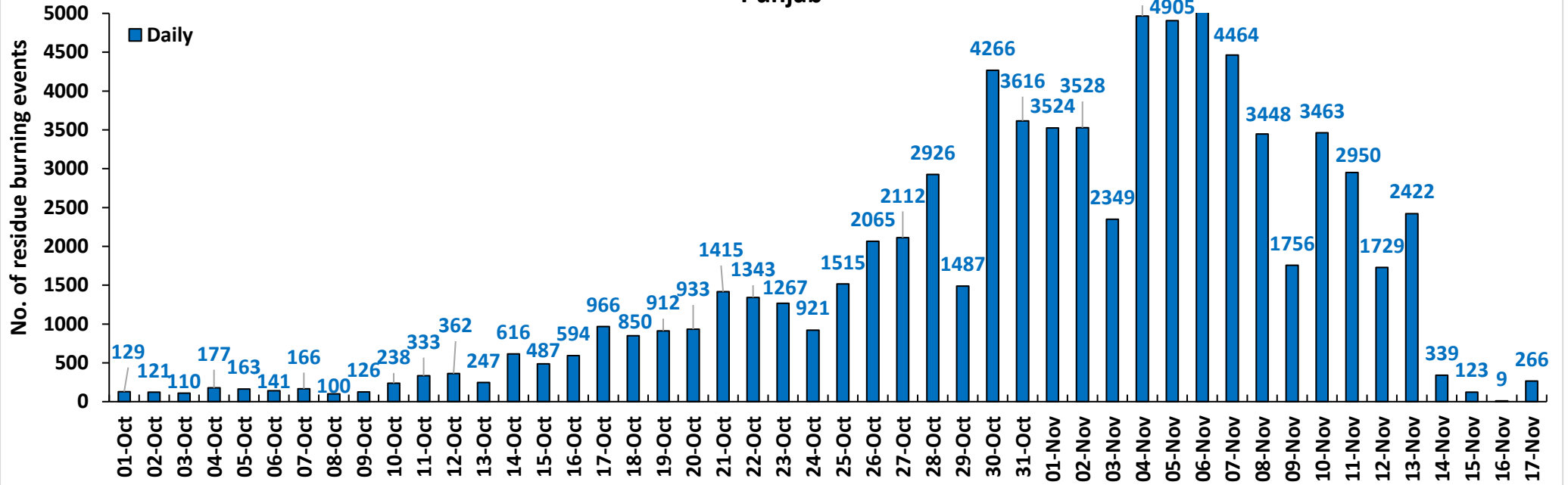
- Satellites detected **319** residue burning events in the three study States on **17-Nov-2020**.
- The state wise events detected on **17-Nov-2020** were **266** in Punjab, **15** in Haryana and **38** in UP.
- The number of events has increased from **22** on **16-Nov-2020** to **319** on **17-Nov-2020** in the three states.
- Fazilka in Punjab. Sirsa in Haryana and Azamgarh in UP reported the highest number of events on **17-Nov-2020**.
- Total **84097** burning events were detected in the three States between **01-Oct-2020** and **17-Nov-2020**, which are distributed as **76179**, **5015** and **2903** in Punjab, Haryana and UP, respectively.
- In Haryana and UP, the cumulative number of burning events between **01-Oct** and **17-Nov 2020** were lower than in **2019**, while in Punjab the cumulative number of events were more than in **2019**.

[AQUA \(MODIS\) Satellite image of North India Acquired on 17-Nov-2020 at 13:20 IST by IARI Ground Station](#)

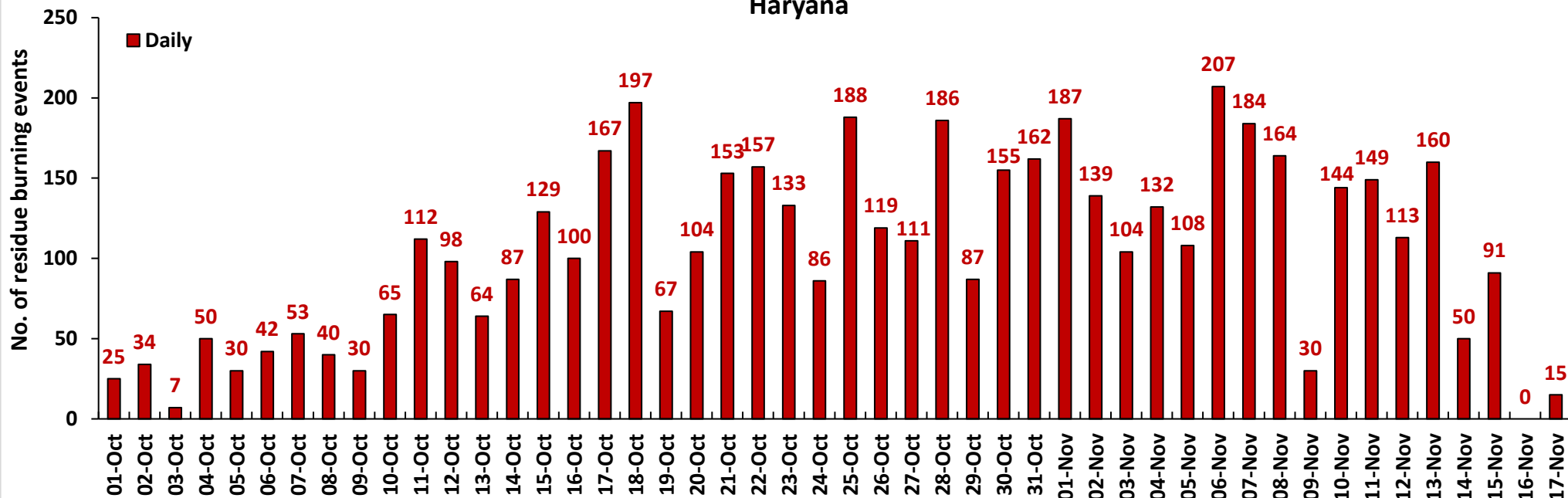


Temporal distribution of residue burning events for the three study States in 2020.

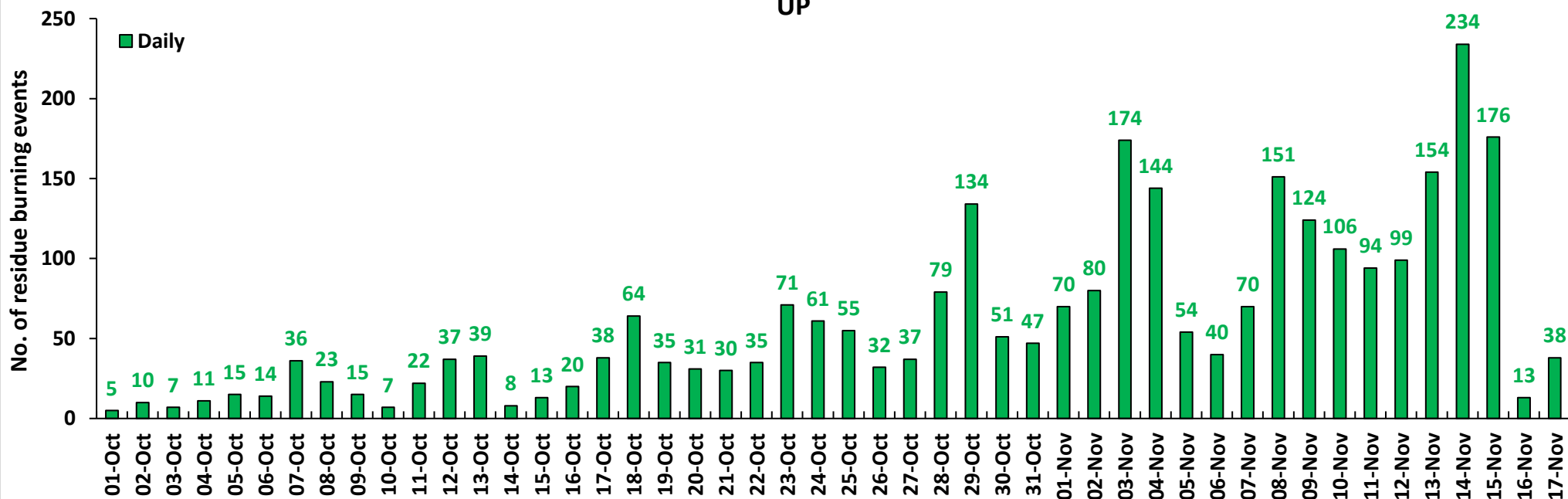
Punjab



Haryana



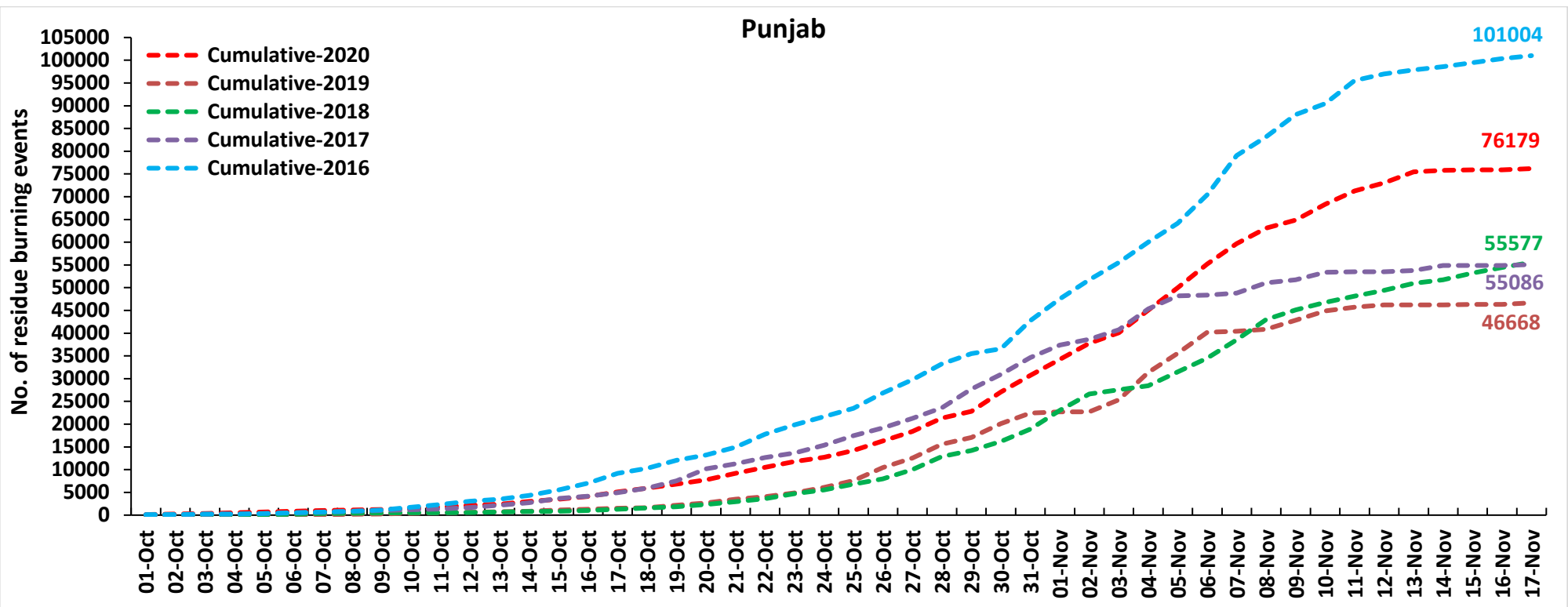
UP

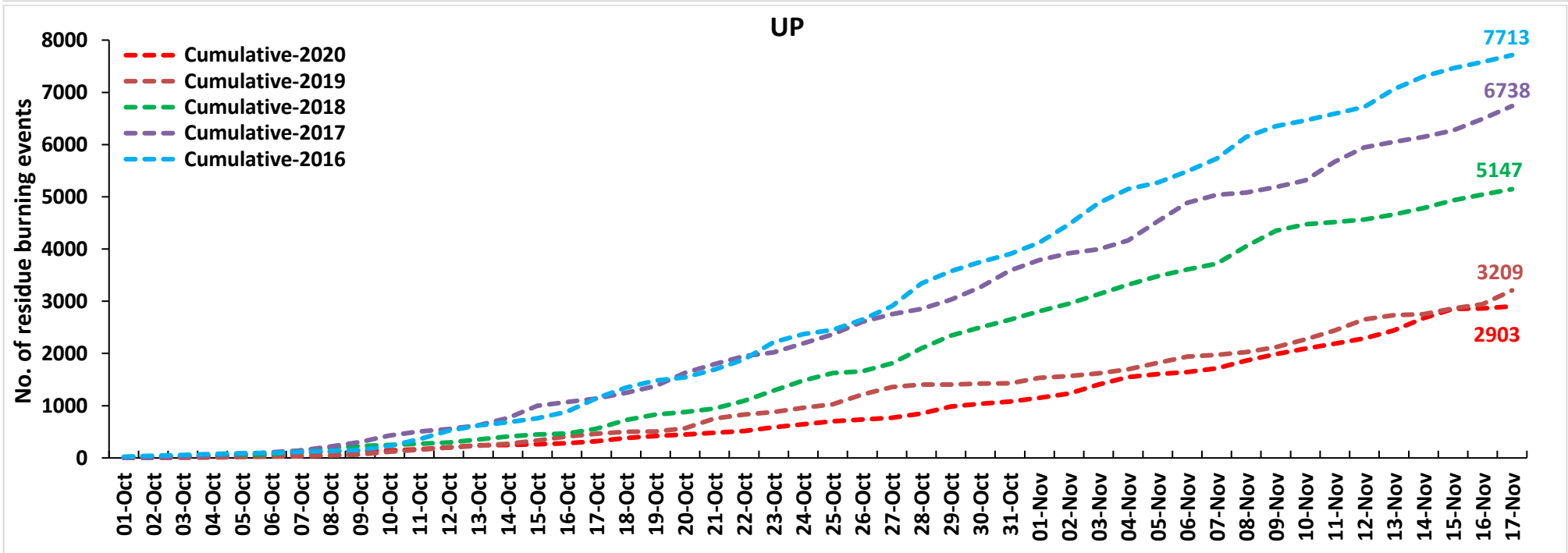
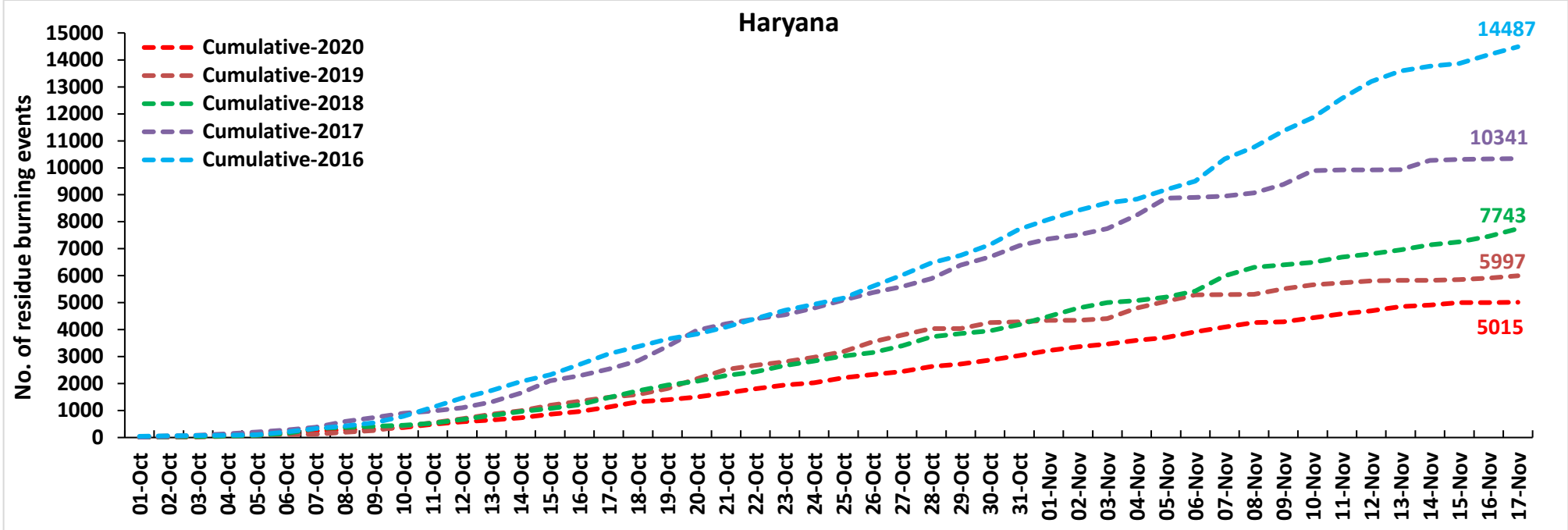


Comparison of residue burning events in current year (2020) with previous years (2019, 2018, 2017 & 2016) for the three study States

(01-Oct to 17-Nov)

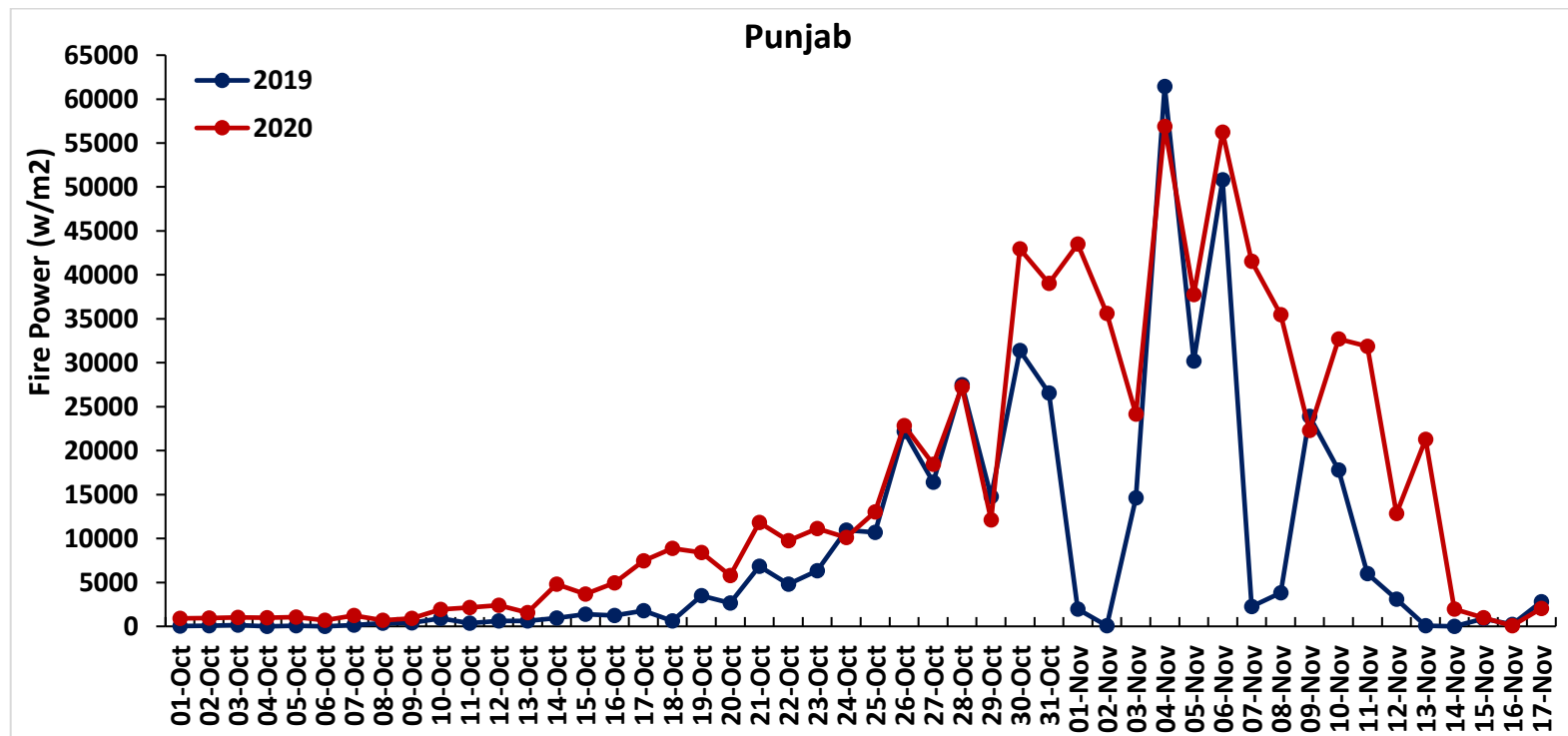
Punjab

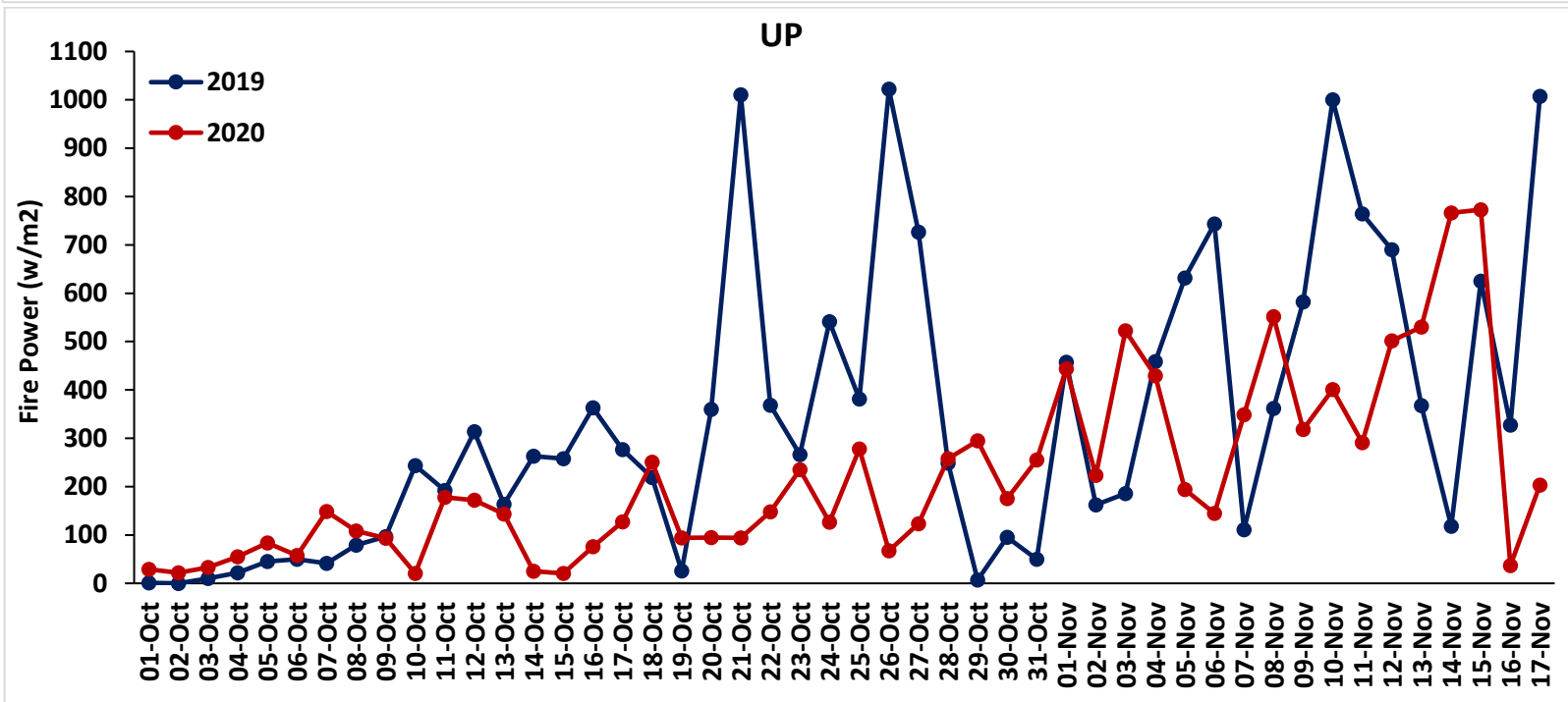
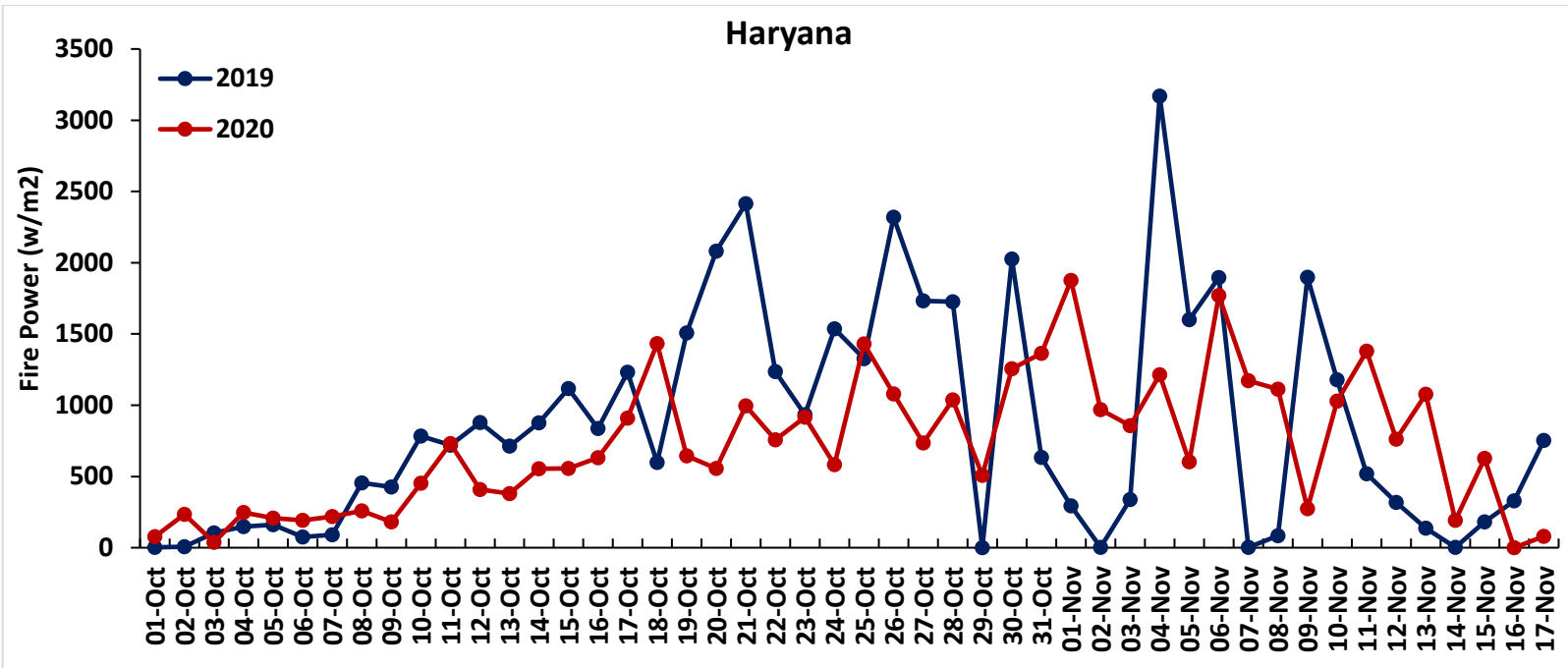




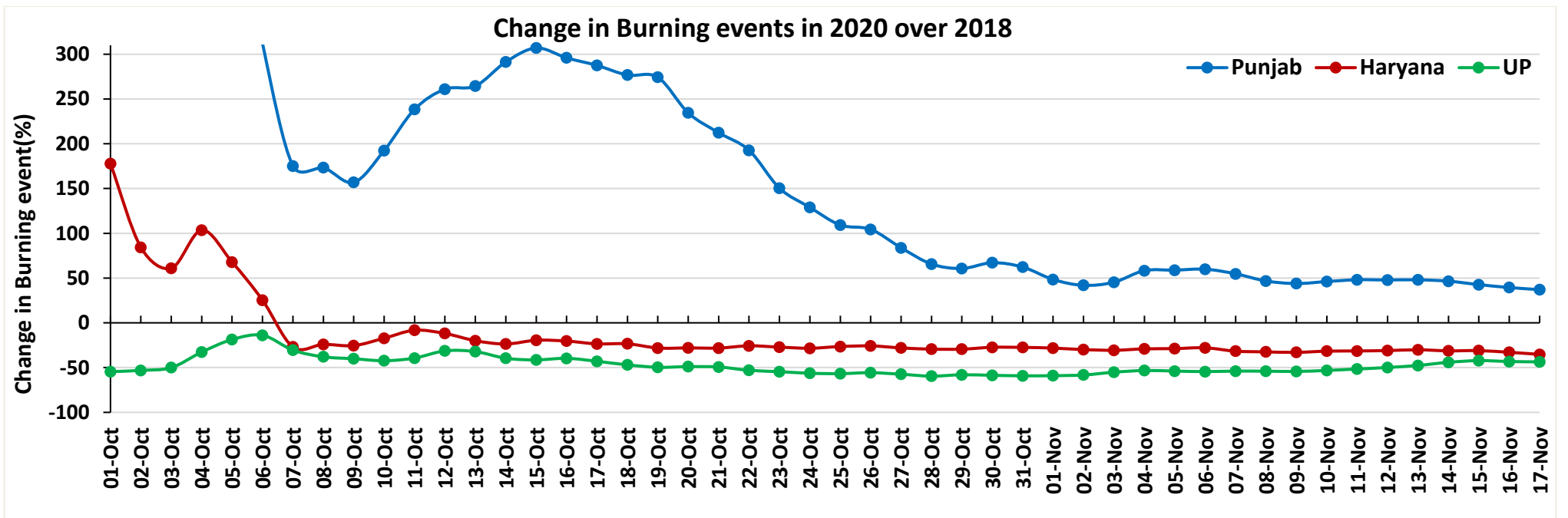
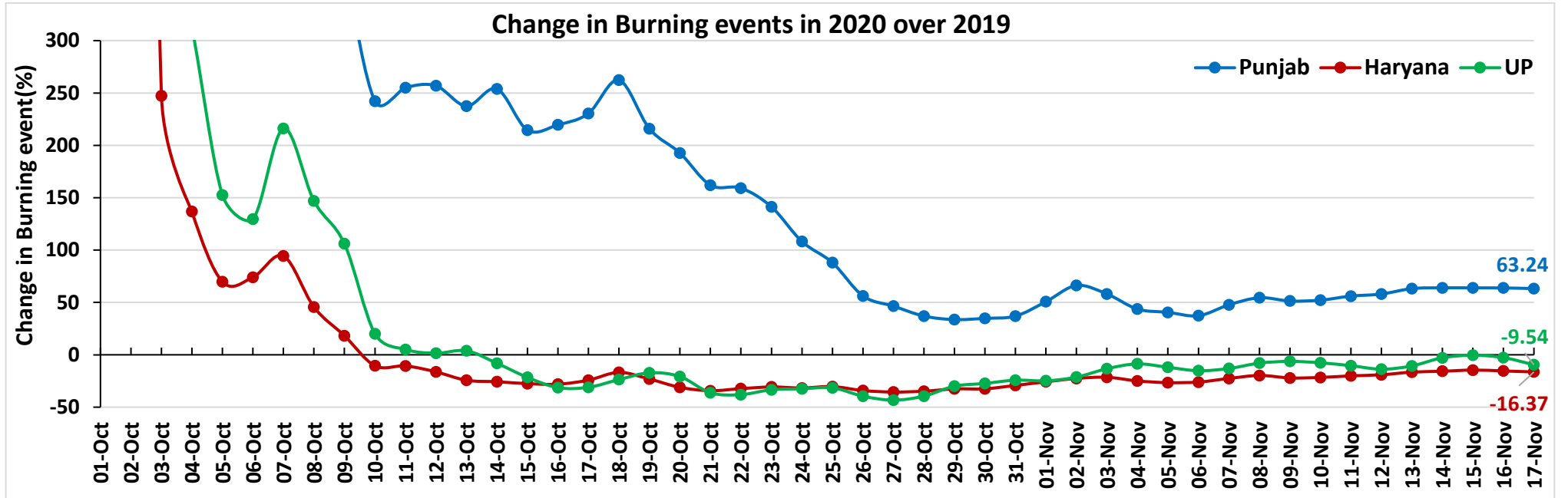
Comparison of Fire Intensity of residue burning events in current year (2020) with previous year (2019)
For the three study States

(01-Oct to 17-Nov)

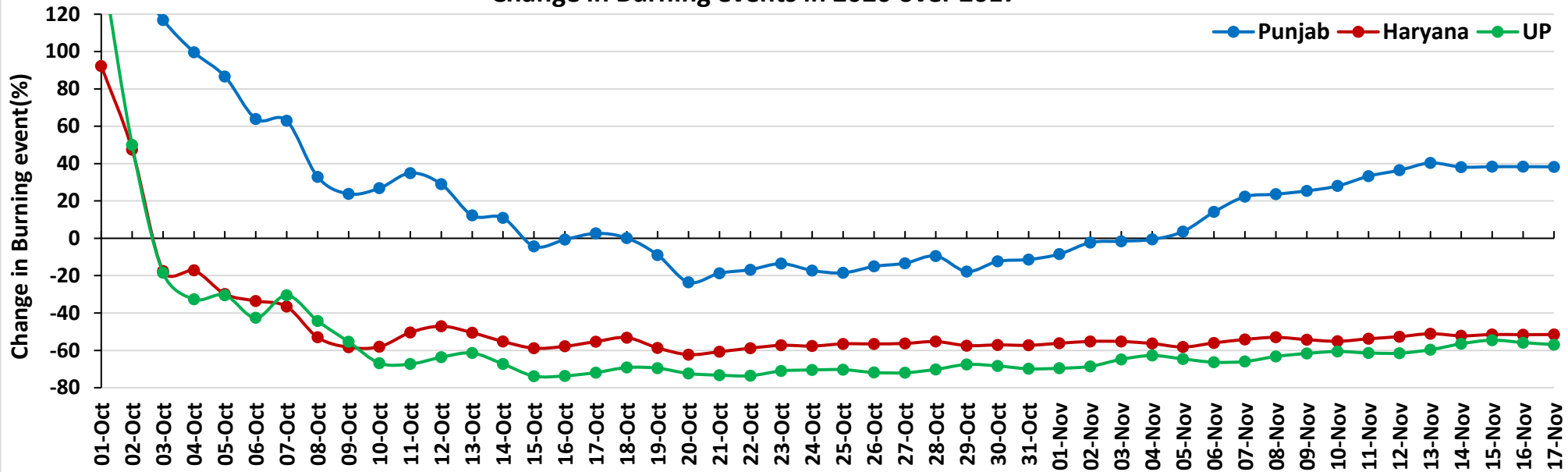




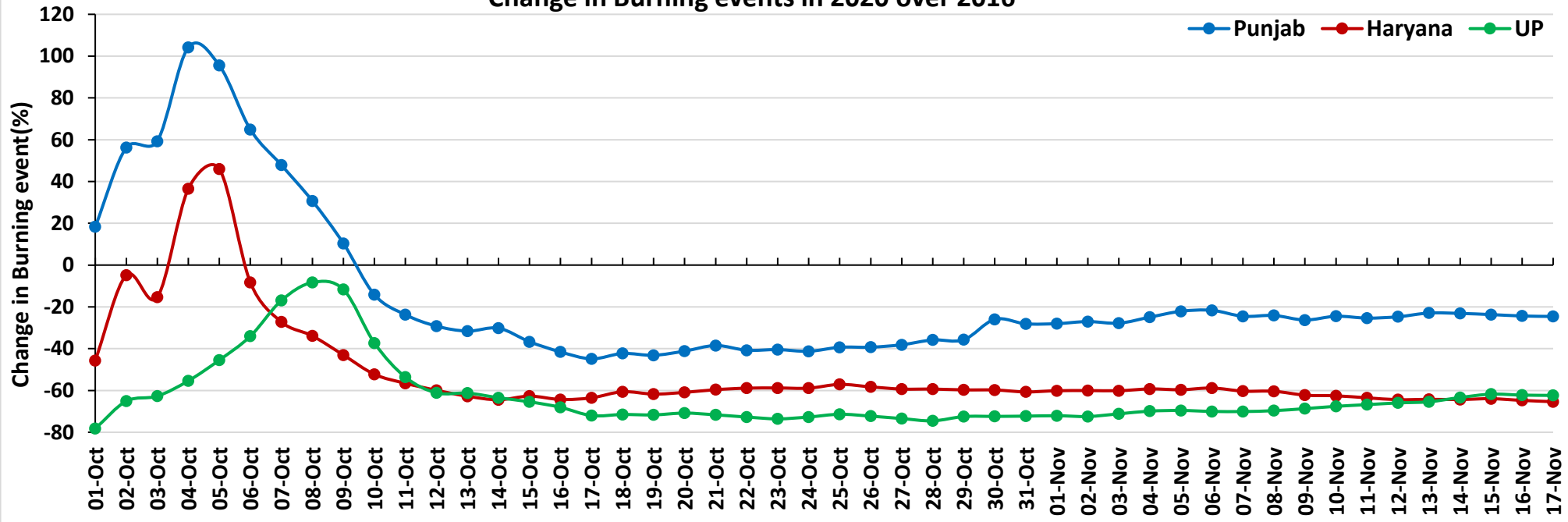
Percent Change in Burning events in 2020 over 2019, 2018, 2017 and 2016 (Daily Cumulative)



Change in Burning events in 2020 over 2017

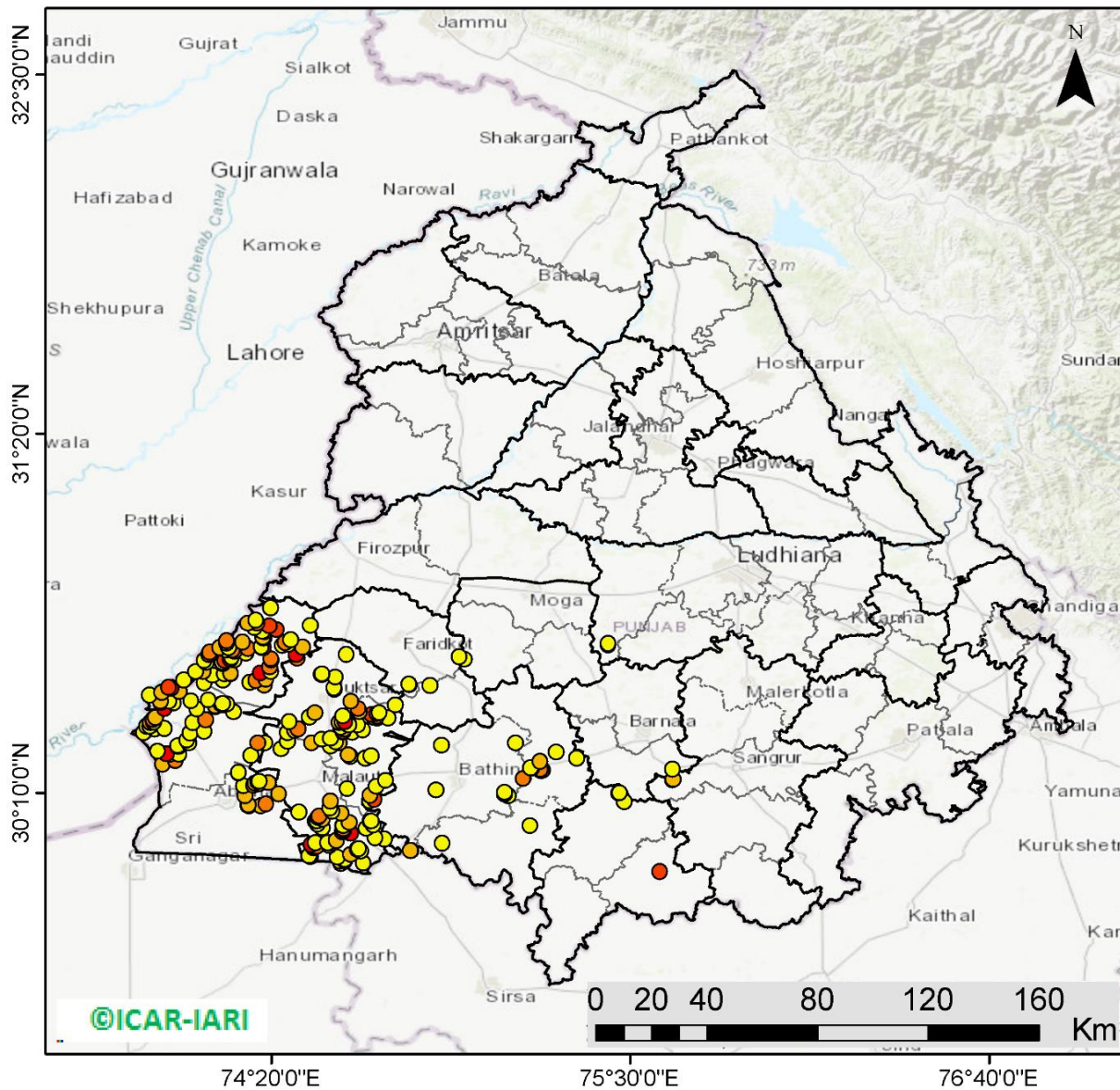


Change in Burning events in 2020 over 2016



(a) Punjab

RICE RESIDUE BURNING IN PUNJAB



266 burning events detected in Punjab on 17th November 2020

Fire Intensity (W/m²)

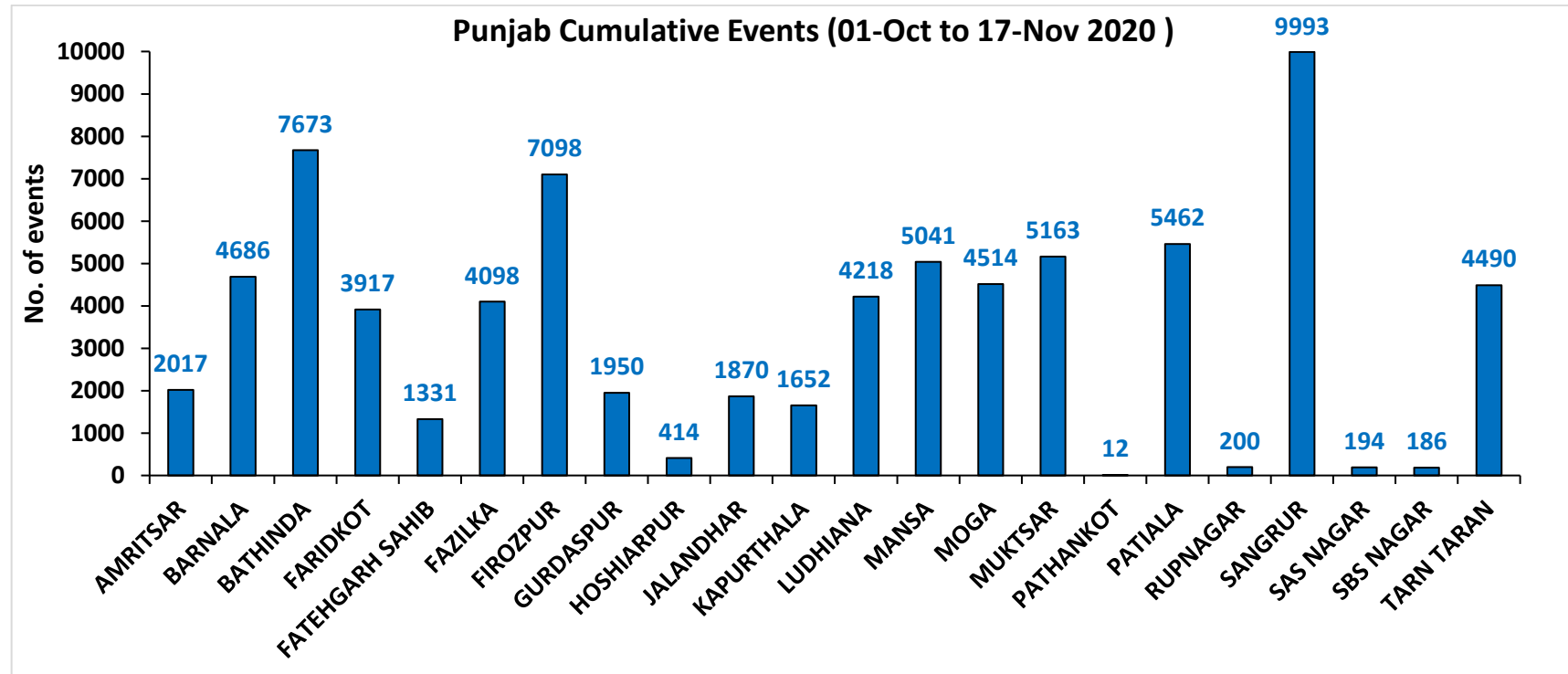
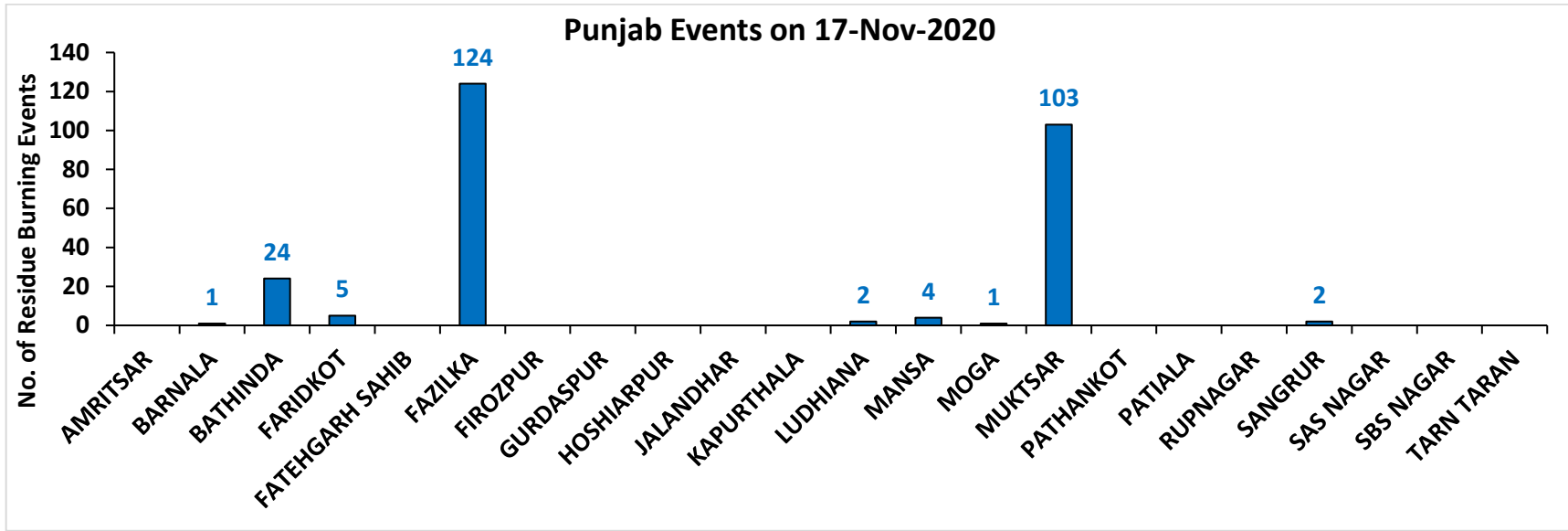
- 0 - 5
- 6 - 10
- 11 - 15
- 16 - 20
- >20

©ICAR-IARI



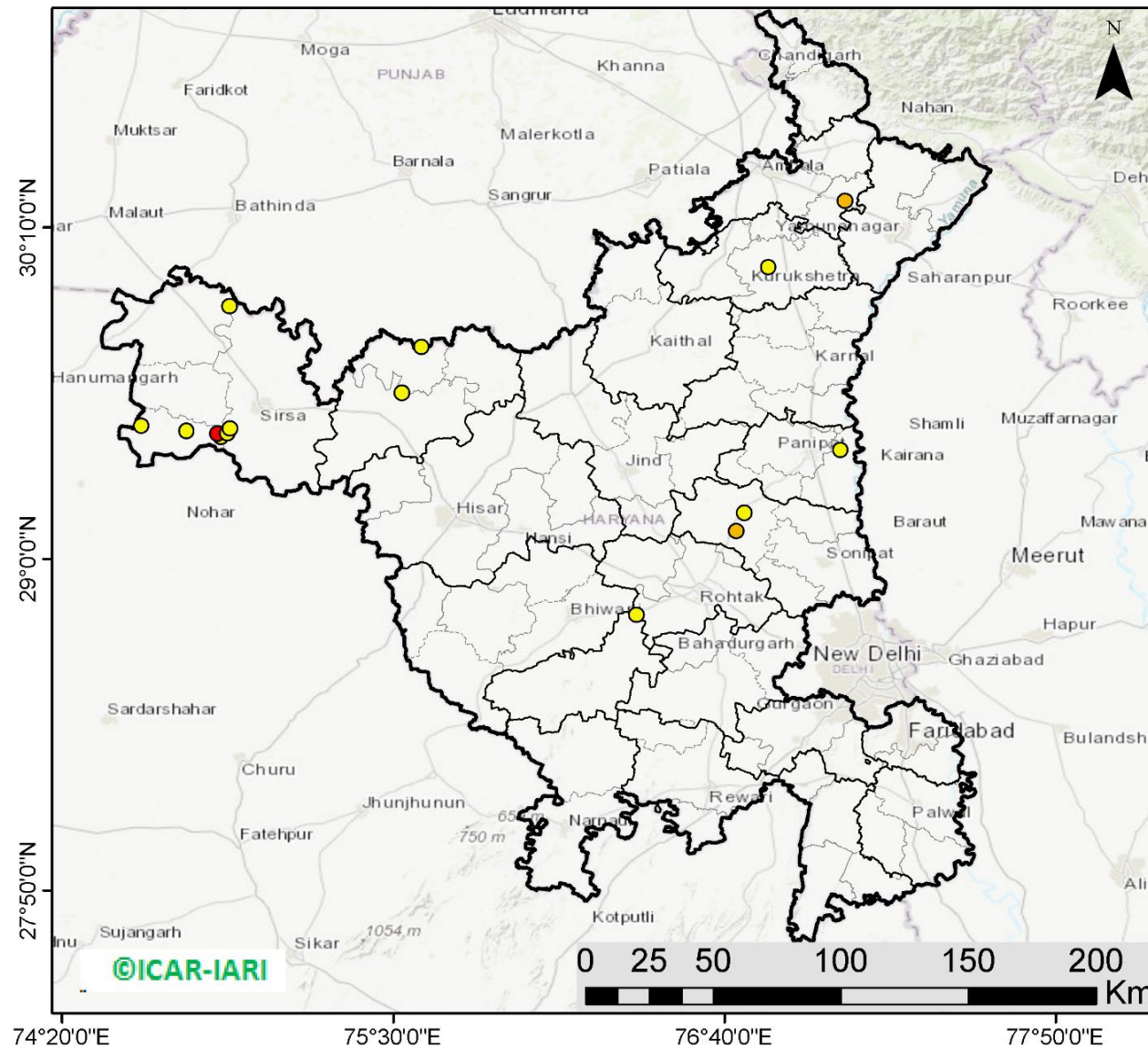
<http://geoportal.icar.gov.in:8080/geoexplorer/composer/>

District-wise number of residue burning events in Punjab (01-Oct to 17-Nov 2020)



(b) Haryana

RICE RESIDUE BURNING IN HARYANA



15 burning events detected in Haryana on 17th November 2020

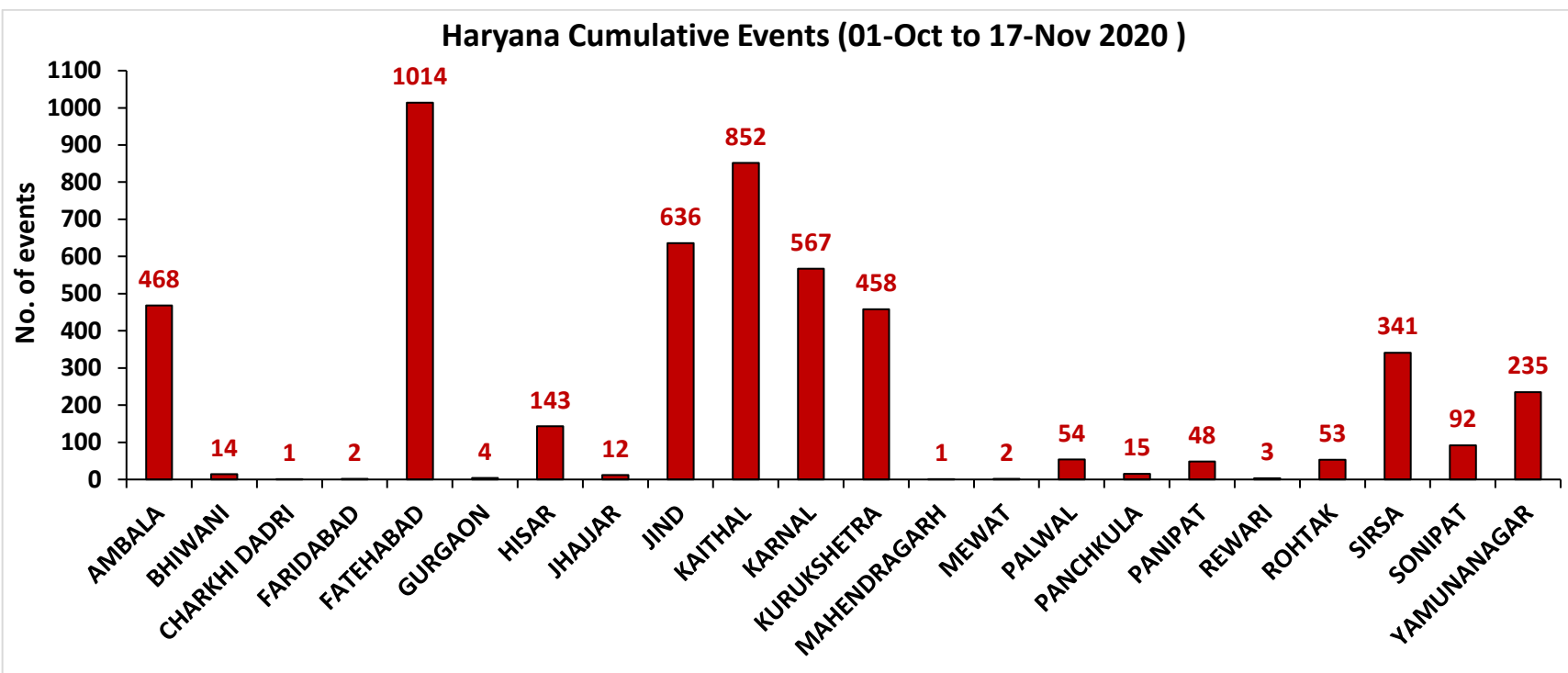
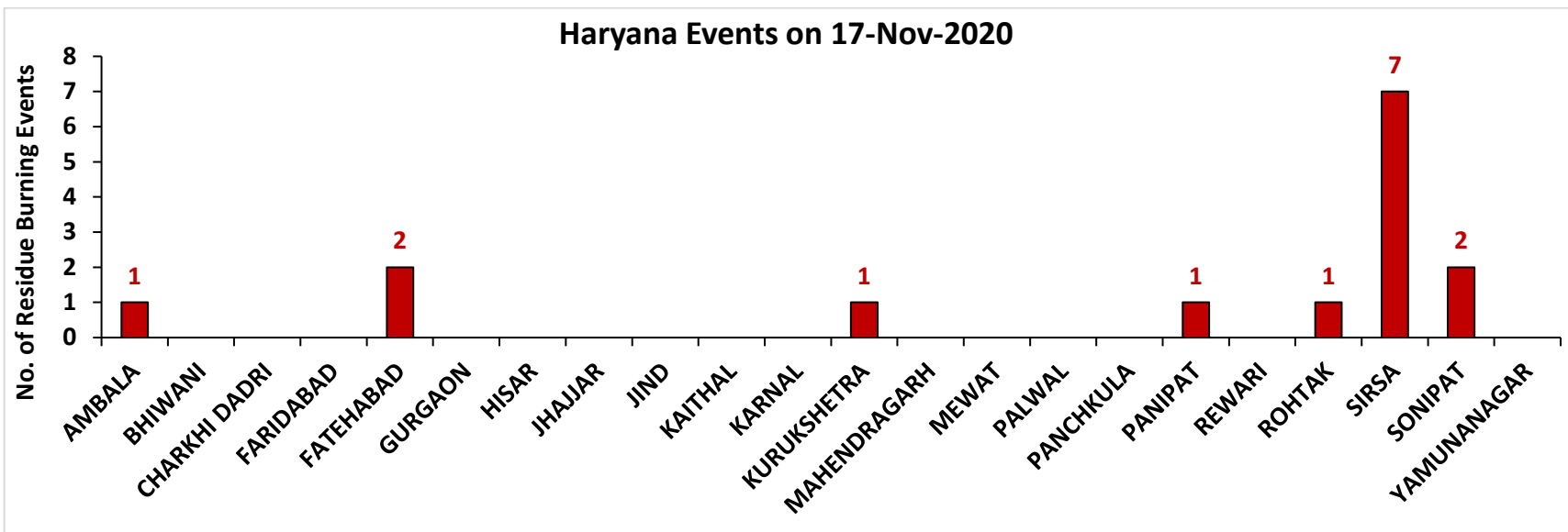
Fire Intensity (W/m²)

- 0 - 5
- 6 - 10
- 11 - 15
- 16 - 20
- >20



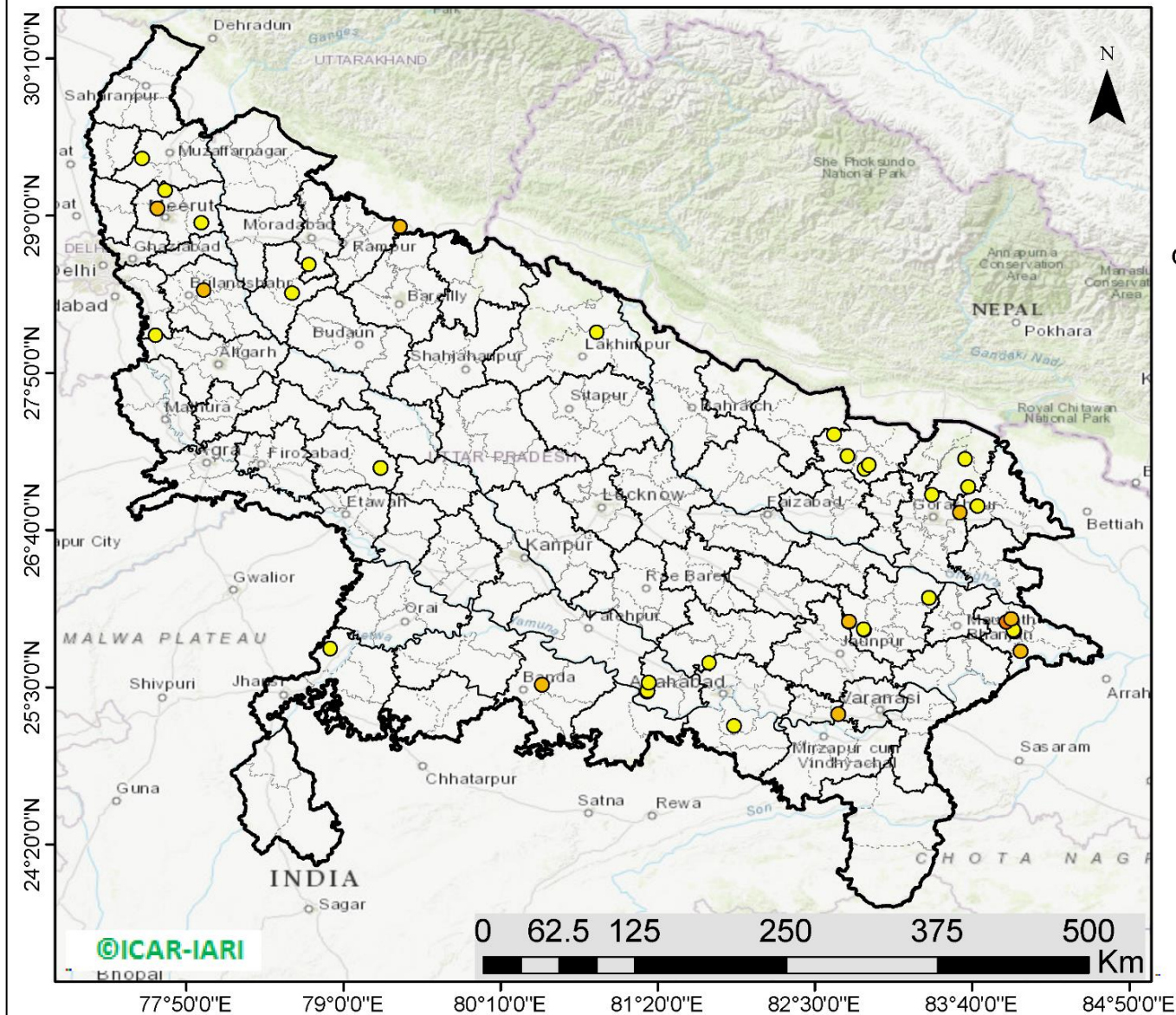
<http://geoportal.icar.gov.in:8080/geoexplorer/composer/>

District-wise number of residue burning events in Haryana (01-Oct to 17-Nov 2020)



(c) Uttar Pradesh

RICE RESIDUE BURNING IN UTTAR PRADESH



38 burning events detected in Uttar Pradesh on 17th November 2020

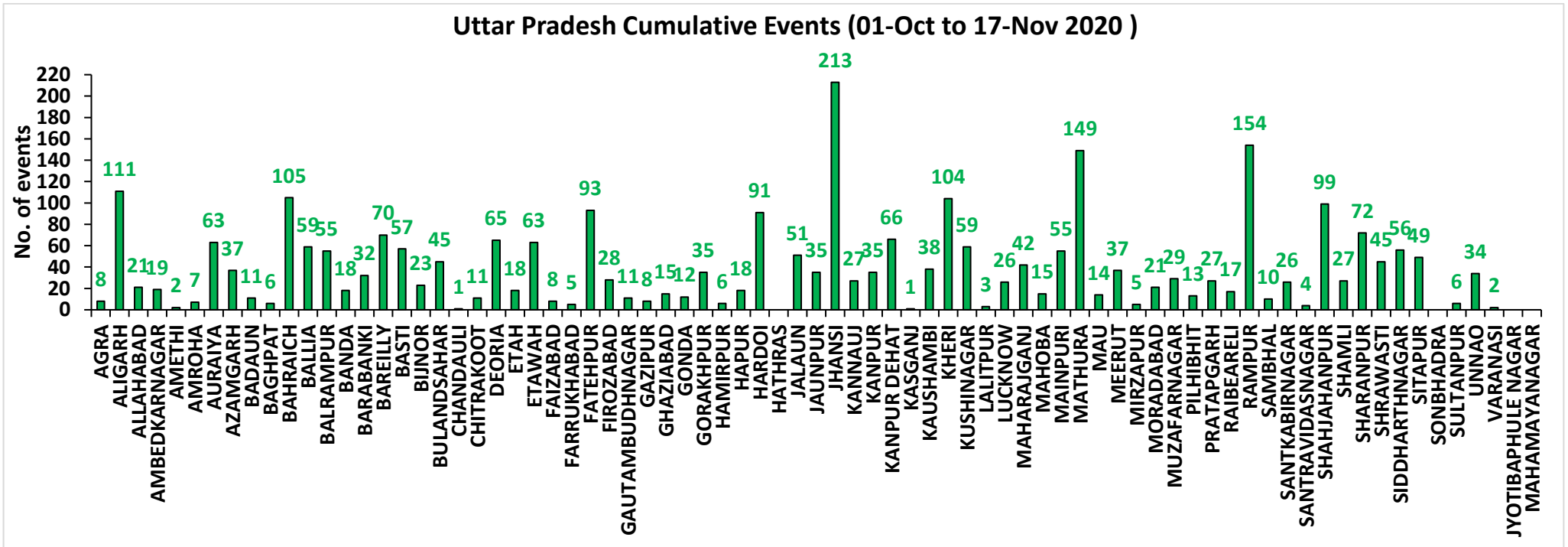
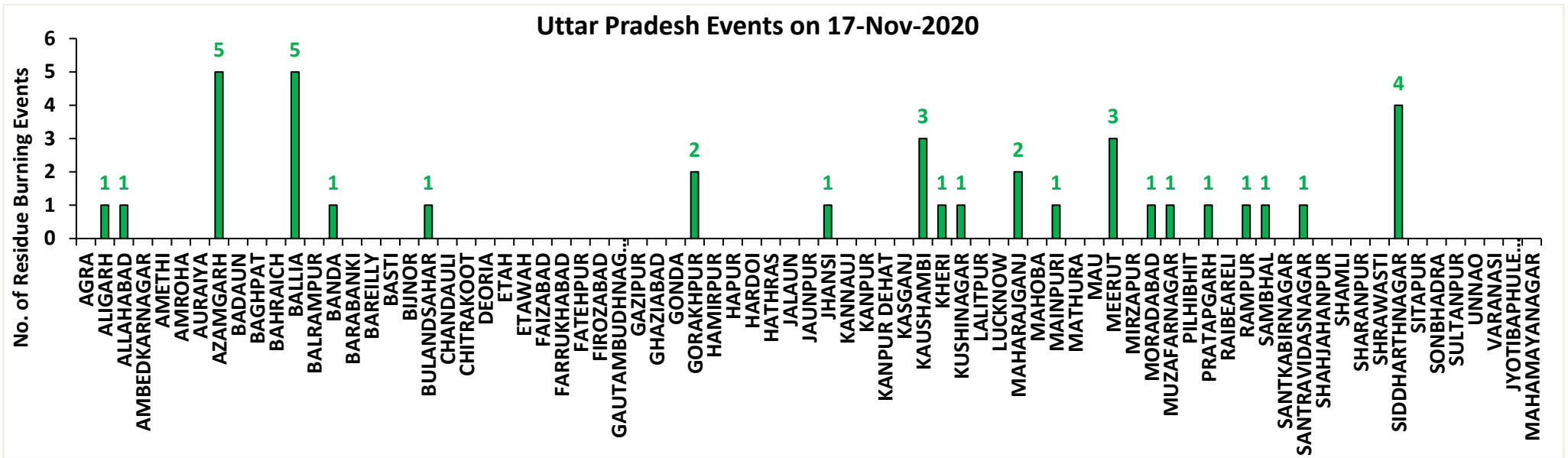
Fire Intensity (W/m²)

- 0 - 5
- 6 - 10
- 11 - 15
- 16 - 20
- >20



<http://geoportal.icar.gov.in:8080/geoexplorer/composer/>

District-wise number of residue burning events in Uttar Pradesh (01-Oct to 17-Nov 2020)



State-wise and date-wise number of residue burning events detected in 2016, 2017, 2018, 2019 and 2020
(Period: 01-October to 17-November)

Date	Punjab					Haryana					UP					Total				
	2020	2019	2018	2017	2016	2020	2019	2018	2017	2016	2020	2019	2018	2017	2016	2020	2019	2018	2017	2016
01-Oct	129	3	16	54	109	25	1	9	13	46	5	1	11	2	23	159	5	36	69	178
02-Oct	121	20	9	50	51	34	2	23	27	16	10	0	21	8	20	165	22	53	85	87
03-Oct	110	37	4	62	66	07	16	9	40	16	07	3	12	17	16	124	56	25	119	98
04-Oct	177	3	32	103	37	50	30	16	60	7	11	4	5	22	15	238	37	53	185	59
05-Oct	163	16	56	106	95	30	37	30	68	15	15	11	10	20	14	208	64	96	194	124
06-Oct	141	0	87	138	152	42	22	63	75	105	14	8	13	39	6	197	30	163	252	263
07-Oct	166	27	162	105	171	53	16	180	97	126	36	4	69	33	24	255	47	411	235	321
08-Oct	100	59	39	215	166	40	69	40	218	94	23	18	54	76	14	163	146	133	509	274
09-Oct	126	93	75	163	270	30	70	47	148	121	15	17	32	88	22	171	180	154	399	413
10-Oct	238	172	23	164	597	65	157	37	151	242	07	53	21	126	74	310	382	81	441	913
11-Oct	333	78	30	177	652	112	126	78	87	336	22	38	24	74	128	467	242	132	338	1116
12-Oct	362	99	67	342	694	98	154	133	123	338	37	42	22	51	164	497	295	222	516	1196
13-Oct	247	108	62	470	467	64	159	147	207	284	39	33	61	69	102	350	300	270	746	853
14-Oct	616	141	112	582	812	87	133	153	333	328	08	39	57	137	60	711	313	322	1052	1200
15-Oct	487	262	90	943	1215	129	203	110	458	248	13	63	35	237	76	629	528	235	1638	1539
16-Oct	594	168	174	465	1478	100	148	138	186	385	20	77	20	71	125	714	393	332	722	1988
17-Oct	966	250	272	807	2173	167	152	268	244	399	38	53	94	69	261	1171	455	634	1120	2833
18-Oct	850	100	263	970	1065	197	103	255	306	270	64	39	163	108	204	1111	242	681	1384	1539
19-Oct	912	529	254	1591	1762	67	220	208	541	276	35	3	108	128	132	1014	752	570	2260	2170
20-Oct	933	490	496	2653	1175	104	360	141	597	188	31	62	49	255	62	1068	912	686	3505	1425
21-Oct	1415	852	618	1139	1726	153	339	217	233	257	30	185	66	168	152	1598	1376	901	1540	2135
22-Oct	1343	555	656	1356	2837	157	158	134	186	309	35	78	149	151	194	1535	791	939	1693	3340
23-Oct	1267	827	1113	994	2040	133	131	232	155	313	71	48	193	72	331	1471	1006	1538	1221	2684
24-Oct	921	1220	844	1714	1836	86	165	166	244	221	61	79	192	171	152	1068	1464	1202	2129	2209
25-Oct	1515	1463	1247	2104	1813	188	212	182	303	229	55	67	142	175	83	1758	1742	1571	2582	2125
26-Oct	2065	2861	1173	1715	3390	119	366	132	276	434	32	189	33	240	195	2216	3416	1338	2231	4019
27-Oct	2112	2135	2040	2069	2904	111	249	252	224	417	37	145	154	145	255	2260	2529	2446	2438	3576
28-Oct	2926	3007	2864	2318	3493	186	238	330	292	458	79	45	290	99	435	3191	3290	3484	2709	4386
29-Oct	1487	1504	1321	4184	2258	87	0	124	502	278	134	1	243	180	237	1708	1505	1688	4866	2773
30-Oct	4266	3017	2008	3152	1076	155	222	103	307	395	51	19	158	238	175	4472	3258	2269	3697	1646
31-Oct	3616	2325	2715	3743	6132	162	36	229	413	575	47	4	148	321	153	3825	2365	3092	4477	6860
01-Nov	3524	293	4140	2736	4843	187	50	306	250	362	70	105	161	199	223	3781	448	4607	3185	5428
02-Nov	3528	6	3550	1246	4183	139	2	306	145	332	80	33	142	131	345	3747	41	3998	1522	4860

03-Nov	2349	2646	972	2109	3806	104	68	202	240	375	174	56	181	75	409	2627	2770	1355	2424	4490
04-Nov	4965	6001	882	4603	4477	132	383	77	499	146	144	75	183	168	265	5241	6459	1142	5270	4888
05-Nov	4905	4199	2989	2876	4137	108	253	129	625	345	54	124	163	367	125	5067	4576	3281	3868	4607
06-Nov	5235	4642	3071	171	6303	207	243	222	26	322	40	118	130	357	215	5482	5003	3423	554	6840
07-Nov	4464	189	4033	420	8575	184	2	568	46	821	70	33	108	149	244	4718	224	4709	615	9640
08-Nov	3448	462	4450	2256	4129	164	16	313	128	432	151	54	338	43	419	3763	532	5101	2427	4980
09-Nov	1756	2003	2083	675	4857	30	199	96	311	608	124	96	294	107	205	1910	2298	2473	1093	5670
10-Nov	3463	2046	1675	1642	2468	144	151	85	509	484	106	147	125	131	109	3713	2344	1885	2282	3061
11-Nov	2950	783	1364	103	5040	149	78	196	29	716	94	174	45	358	129	3193	1035	1605	490	5885
12-Nov	1729	520	1256	33	1477	113	68	122	3	634	99	210	45	269	129	1941	798	1423	305	2240
13-Nov	2422	10	1563	237	885	160	16	146	7	389	154	79	94	109	338	2736	105	1803	353	1612
14-Nov	339	0	765	1101	692	50	1	189	340	171	234	22	128	95	247	623	23	1082	1536	1110
15-Nov	123	92	1480	5	871	91	29	107	40	107	176	111	146	123	154	390	232	1733	168	1132
16-Nov	9	23	1250	8	911	0	59	204	17	318	13	79	112	218	123	22	161	1566	243	1352
17-Nov	266	332	1132	217	638	15	85	289	12	299	38	265	103	249	130	319	682	1524	478	1067
Total	76179	46668	55577	55086	101004	5015	5997	7743	10341	14487	2903	3209	5147	6738	7713	84097	55874	68467	72165	123204

**District-wise and date-wise cumulative number of residue burning events detected in 2016, 2017, 2018, 2019 and 2020
(Period: 01-Oct to 17-Nov)**

(a) Punjab

Districts	01-Oct to 17-Nov				
	2016	2017	2018	2019	2020
AMRITSAR	2118	1206	1157	1322	2017
BARNALA	5674	2790	3076	2906	4686
BATHINDA	8775	4750	6043	5031	7673
FARIDKOT	4598	2865	2858	2022	3917
FATEHGARH SAHIB	2453	1607	841	809	1331
FAZILKA	0	0	0	1483	4098
FIROZPUR	13202	5801	9009	4368	7098
GURDASPUR	2180	1507	1096	1443	1950
HOSHIARPUR	898	477	187	308	414
JALANDHAR	4638	1987	1321	1490	1870
KAPURTHALA	3126	1526	719	1345	1652
LUDHIANA	9396	3978	2537	2227	4218
MANSA	5569	4082	4139	3443	5041
MOGA	6380	1986	2534	2067	4514
MUKTSAR	6805	3444	5197	2603	5163
PATHANKOT	0	0	0	6	12
PATIALA	6530	5006	4175	3824	5462
RUPNAGAR	711	326	76	118	200
SANGRUR	11832	8223	7668	6303	9993
SAS NAGAR	114	107	104	150	194
SBS NAGAR	1593	792	355	261	186
TARN TARAN	4412	2626	2485	3139	4490
Total	101004	55086	55577	46668	76179

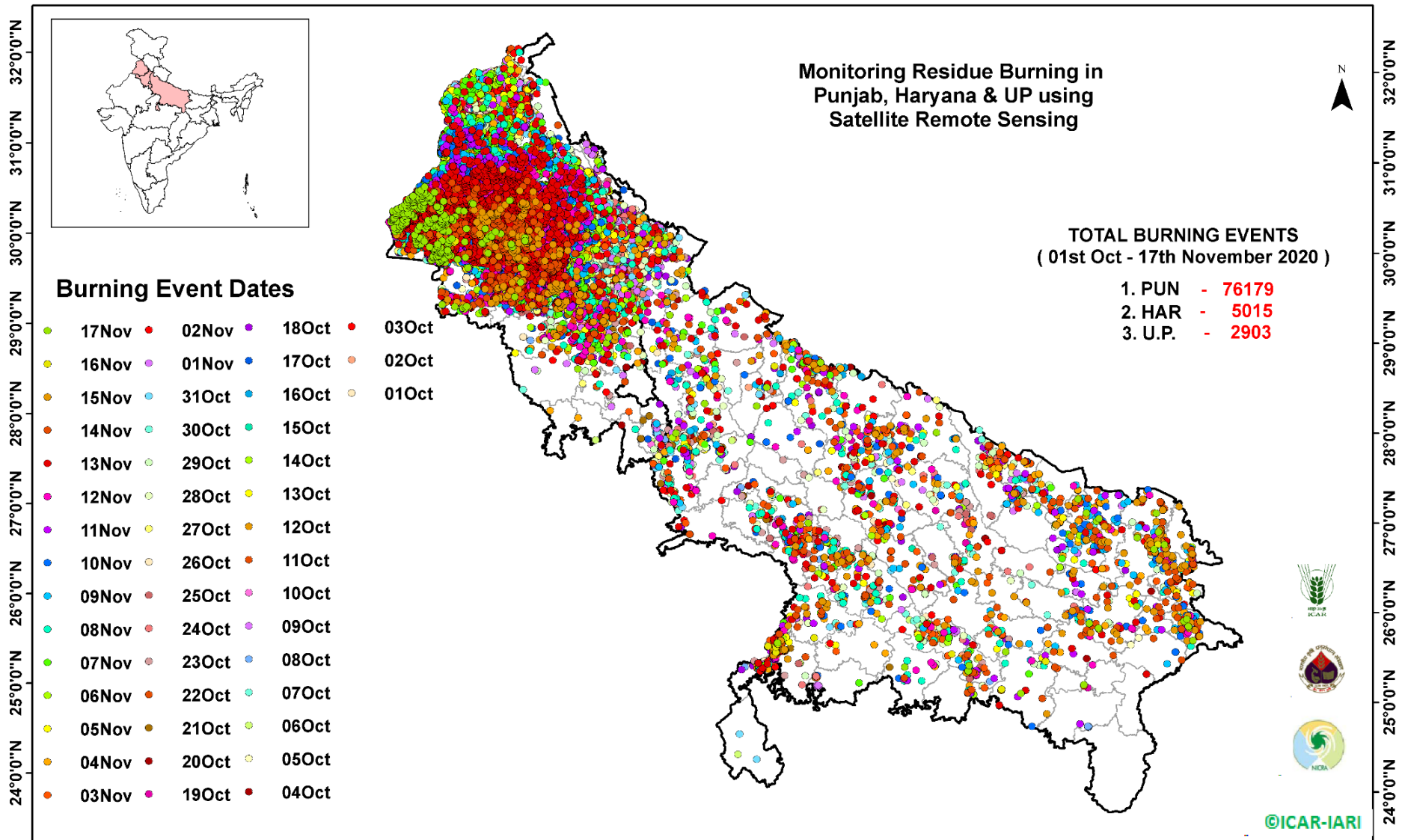
(b) Haryana

Districts	01-Oct to 17-Nov				
	2016	2017	2018	2019	2020
AMBALA	529	490	323	336	468
BHIWANI	68	27	13	10	14
CHARKHI DADRI	0	0	0	0	1
FARIDABAD	283	341	185	10	2
FATEHABAD	4617	2955	2077	1074	1014
GURGAON	0	0	0	4	4
HISAR	343	161	151	102	143
JHAJJAR	27	15	15	3	12
JIND	829	898	773	545	636
KAITHAL	1742	1491	1272	1236	852
KARNAL	1624	1484	834	1071	567
KURUKSHETRA	1076	1141	679	737	458
MAHENDRAGARH	0	0	0	2	1
MEWAT	0	0	0	3	2
PALWAL	0	0	0	188	54
PANCHKULA	0	0	3	21	15
PANIPAT	77	75	53	30	48
REWARI	0	0	0	3	3
ROHTAK	75	53	18	17	53
SIRSA	2886	848	1140	328	341
SONIPAT	72	55	28	28	92
YAMUNANAGAR	239	307	179	249	235
Total	14487	10341	7743	5997	5015

(C)
Uttar Pradesh

Districts	01-Oct to 17-Nov																
	2016	2017	2018	2019	2020	GAUTAMBUDHNAGAR	20	34	11	16	11	MUZAFARNAGAR	105	113	31	24	29
AGRA	0	0	0	4	8	GAZIPUR	13	7	10	8	8	PILHIBHIT	913	706	419	337	13
ALIGARH	50	75	90	89	111	GHAZIABAD	60	40	25	12	15	PRATAPGARH	25	33	22	13	27
ALLAHABAD	3	8	11	8	21	GONDA	43	33	18	6	12	RAIBEARELI	52	52	30	17	17
AMBEDKARNAGAR	61	26	14	6	19	GORAKHPUR	48	83	74	11	35	RAMPUR	612	610	219	307	154
AMETHI	0	0	0	6	2	HAMIRPUR	0	0	1	27	6	SAMBHAL	0	0	0	8	10
AMROHA	0	0	0	7	7	HAPUR	0	0	0	8	18	SANTKABIRNAGAR	51	58	48	5	26
AURAIYA	188	155	50	35	63	HARDOI	228	188	107	73	91	SANTRAVIDASNAGAR	0	0	0	0	4
AZAMGARH	26	24	20	2	37	HATHRAS	0	0	0	1	0	SHAHJAHANPUR	1119	675	366	331	99
BADAUN	6	6	9	22	11	JALAUN	0	0	0	109	51	SHAMLI	0	0	0	21	27
BAGHPAT	0	0	0	9	6	JAUNPUR	12	10	14	5	35	SHARANPUR	79	104	49	61	72
BAHRAICH	60	37	57	41	105	JHANSI	0	0	2	114	213	SHRAWASTI	32	29	35	18	45
BALLIA	10	16	12	8	59	KANNAUJ	21	14	6	8	27	SIDDHARTHANAGAR	221	160	432	31	56
BALRAMPUR	29	27	39	5	55	KANPUR	9	7	8	6	35	SITAPUR	106	65	35	37	49
BANDA	1	11	8	8	18	KANPUR DEHAT	30	44	17	25	66	SONBHADRA	14	10	10	0	0
BARABANKI	206	149	169	57	32	KASGANJ	0	0	0	3	1	SULTANPUR	41	22	19	11	6
BAREILLY	236	197	114	106	70	KAUSHAMBI	15	35	32	14	38	UNNAO	50	43	33	26	34
BASTI	125	177	102	10	57	KHERI	388	250	175	162	104	VARANASI	1	0	0	0	2
BIJNOR	42	37	7	13	23	KUSHINAGAR	29	62	69	15	59	JYOTIBAPHULE NAGAR	9	11	4	0	0
BULANDSAHAR	18	28	12	23	45	LALITPUR	0	0	0	6	3	MAHAMAYANAGAR	2	2	7	0	0
CHANDAULI	3	2	0	0	1	LUCKNOW	57	30	26	17	26	Total	7713	6738	5147	3209	2903
CHITRAKOOT	0	0	0	3	11	MAHARAJGANJ	411	729	768	189	42						
DEORIA	38	44	43	2	65	MAHOBA	0	0	0	9	15						
ETAH	16	28	24	4	18	MAINPURI	65	81	41	37	55						
ETAWAH	89	94	37	45	63	MATHURA	1437	1082	1046	459	149						
FAIZABAD	12	9	7	3	8	MAU	10	7	9	2	14						
FARRUKHABAD	0	0	0	5	5	MEERUT	56	63	12	21	37						
FATEHPUR	44	36	67	49	93	MIRZAPUR	3	11	5	3	5						
FIROZABAD	23	18	9	14	28	MORADABAD	40	31	11	12	21						

Map of Cumulative Burning Events (01-Oct to 17-Nov 2020)



[\(http://geoportal.icar.gov.in:8080/geoexplorer/composer/\)](http://geoportal.icar.gov.in:8080/geoexplorer/composer/)

Details of residue burning events in Punjab on 17-Nov-2020

S. No.	District	Tehsil / Block	Satellite	Latitude	Longitude	Time (IST)	Day / Night	Fire Power (W/m ²)
1	BARNALA	TAPPA	S-NPP	30.24370	75.63761	13:48:00	D	5.00
2	BATHINDA	BATHINDA	S-NPP	29.97921	74.78757	13:48:00	D	5.00
3	BATHINDA	BATHINDA	S-NPP	29.97953	74.78544	13:48:00	D	9.00
4	BATHINDA	BATHINDA	S-NPP	30.14062	74.65359	13:48:00	D	4.00
5	BATHINDA	BATHINDA	S-NPP	30.14608	74.66764	13:48:00	D	19.00
6	BATHINDA	BATHINDA	S-NPP	30.15787	75.10355	13:48:00	D	3.00
7	BATHINDA	BATHINDA	S-NPP	30.15943	74.65554	13:48:00	D	7.00
8	BATHINDA	BATHINDA	S-NPP	30.16409	75.09216	13:48:00	D	4.00
9	BATHINDA	BATHINDA	S-NPP	30.16781	75.09157	13:48:00	D	4.00
10	BATHINDA	BATHINDA	S-NPP	30.17476	74.86933	13:48:00	D	5.00
11	BATHINDA	BATHINDA	AQUA	30.21200	75.15200	13:20:00	D	11.00
12	BATHINDA	BATHINDA	S-NPP	30.24675	75.17863	13:48:00	D	2.00
13	BATHINDA	BATHINDA	S-NPP	30.24734	75.17685	13:48:00	D	4.00
14	BATHINDA	BATHINDA	AQUA	30.26900	75.20800	13:20:00	D	10.00
15	BATHINDA	BATHINDA	S-NPP	30.32021	74.88708	13:48:00	D	2.00
16	BATHINDA	RAMPURA PHUL	S-NPP	30.23931	75.21141	13:48:00	D	19.00
17	BATHINDA	RAMPURA PHUL	S-NPP	30.23973	75.20969	13:48:00	D	15.00
18	BATHINDA	RAMPURA PHUL	S-NPP	30.24034	75.21487	13:48:00	D	8.00
19	BATHINDA	RAMPURA PHUL	S-NPP	30.24306	75.21082	13:48:00	D	19.00
20	BATHINDA	RAMPURA PHUL	S-NPP	30.24348	75.20910	13:48:00	D	15.00
21	BATHINDA	RAMPURA PHUL	S-NPP	30.28000	75.32576	13:48:00	D	5.00
22	BATHINDA	RAMPURA PHUL	S-NPP	30.29896	75.25877	13:48:00	D	4.00
23	BATHINDA	RAMPURA PHUL	S-NPP	30.32897	75.12730	13:48:00	D	2.00
24	BATHINDA	TALWANDI SABO	S-NPP	30.00269	74.88969	13:48:00	D	3.00
25	BATHINDA	TALWANDI SABO	S-NPP	30.05929	75.17411	13:48:00	D	4.00
26	FARIDKOT	FARIDKOT	S-NPP	30.51872	74.78316	13:48:00	D	2.00
27	FARIDKOT	FARIDKOT	S-NPP	30.52004	74.78090	13:48:00	D	3.00
28	FARIDKOT	FARIDKOT	S-NPP	30.60956	74.94385	13:48:00	D	3.00
29	FARIDKOT	JAITO	S-NPP	30.45086	74.73608	13:48:00	D	3.00
30	FARIDKOT	JAITO	S-NPP	30.51589	74.84984	02:30:00	N	3.00

31	FAZILKA	ABOHAR	S-NPP	30.12410	74.26115	13:48:00	D	4.00
32	FAZILKA	ABOHAR	S-NPP	30.12535	74.29932	13:48:00	D	10.00
33	FAZILKA	ABOHAR	S-NPP	30.12562	74.25864	13:48:00	D	10.00
34	FAZILKA	ABOHAR	S-NPP	30.12768	74.26056	13:48:00	D	6.00
35	FAZILKA	ABOHAR	AQUA	30.13100	74.31600	13:20:00	D	11.00
36	FAZILKA	ABOHAR	S-NPP	30.15722	74.24860	13:48:00	D	10.00
37	FAZILKA	ABOHAR	S-NPP	30.18940	74.24325	13:48:00	D	4.00
38	FAZILKA	ABOHAR	S-NPP	30.18999	74.27676	13:48:00	D	14.00
39	FAZILKA	ABOHAR	AQUA	30.19500	74.29200	13:20:00	D	12.00
40	FAZILKA	ABOHAR	S-NPP	30.19775	74.28030	13:48:00	D	6.00
41	FAZILKA	ABOHAR	S-NPP	30.19954	74.32338	13:48:00	D	7.00
42	FAZILKA	ABOHAR	S-NPP	30.20253	74.28913	13:48:00	D	2.00
43	FAZILKA	ABOHAR	S-NPP	30.20313	74.29385	13:48:00	D	4.00
44	FAZILKA	ABOHAR	S-NPP	30.23111	74.22678	13:48:00	D	3.00
45	FAZILKA	ABOHAR	S-NPP	30.23272	74.22789	13:48:00	D	3.00
46	FAZILKA	FAZILKA	S-NPP	30.25971	73.98144	13:48:00	D	8.00
47	FAZILKA	FAZILKA	S-NPP	30.27212	74.02169	13:48:00	D	12.00
48	FAZILKA	FAZILKA	S-NPP	30.28871	74.26667	13:48:00	D	4.00
49	FAZILKA	FAZILKA	S-NPP	30.29160	74.00428	13:48:00	D	4.00
50	FAZILKA	FAZILKA	S-NPP	30.29163	74.03256	13:48:00	D	5.00
51	FAZILKA	FAZILKA	AQUA	30.29200	73.99300	13:20:00	D	35.00
52	FAZILKA	FAZILKA	S-NPP	30.30099	73.96510	13:48:00	D	5.00
53	FAZILKA	FAZILKA	S-NPP	30.31578	74.03007	13:48:00	D	2.00
54	FAZILKA	FAZILKA	S-NPP	30.31707	74.03302	13:48:00	D	6.00
55	FAZILKA	FAZILKA	S-NPP	30.31933	74.02947	13:48:00	D	4.00
56	FAZILKA	FAZILKA	S-NPP	30.32753	74.06596	13:48:00	D	4.00
57	FAZILKA	FAZILKA	S-NPP	30.32759	74.31339	13:48:00	D	3.00
58	FAZILKA	FAZILKA	S-NPP	30.32817	74.28912	13:48:00	D	11.00
59	FAZILKA	FAZILKA	S-NPP	30.33761	74.05953	13:48:00	D	3.00
60	FAZILKA	FAZILKA	S-NPP	30.36070	74.06989	13:48:00	D	3.00
61	FAZILKA	FAZILKA	S-NPP	30.36309	73.91857	13:48:00	D	4.00
62	FAZILKA	FAZILKA	S-NPP	30.36659	74.11646	13:48:00	D	5.00
63	FAZILKA	FAZILKA	S-NPP	30.37490	73.95413	13:48:00	D	4.00

64	FAZILKA	FAZILKA	S-NPP	30.37550	73.98698	13:48:00	D	2.00
65	FAZILKA	FAZILKA	S-NPP	30.38254	73.92936	13:48:00	D	3.00
66	FAZILKA	FAZILKA	S-NPP	30.38373	73.93855	13:48:00	D	1.00
67	FAZILKA	FAZILKA	S-NPP	30.39449	74.07849	13:48:00	D	4.00
68	FAZILKA	FAZILKA	S-NPP	30.39494	73.94135	13:48:00	D	11.00
69	FAZILKA	FAZILKA	S-NPP	30.39614	73.95055	13:48:00	D	2.00
70	FAZILKA	FAZILKA	S-NPP	30.40342	74.11985	13:48:00	D	11.00
71	FAZILKA	FAZILKA	AQUA	30.40600	73.95000	13:20:00	D	15.00
72	FAZILKA	FAZILKA	S-NPP	30.41149	73.95737	13:48:00	D	6.00
73	FAZILKA	FAZILKA	S-NPP	30.42971	74.21136	13:48:00	D	4.00
74	FAZILKA	FAZILKA	S-NPP	30.43805	74.09164	13:48:00	D	3.00
75	FAZILKA	FAZILKA	S-NPP	30.43941	73.98698	13:48:00	D	41.00
76	FAZILKA	FAZILKA	S-NPP	30.44565	74.15254	13:48:00	D	6.00
77	FAZILKA	FAZILKA	S-NPP	30.44921	74.15195	13:48:00	D	10.00
78	FAZILKA	FAZILKA	S-NPP	30.45215	74.17547	13:48:00	D	4.00
79	FAZILKA	FAZILKA	S-NPP	30.45390	74.18960	13:48:00	D	3.00
80	FAZILKA	FAZILKA	S-NPP	30.45513	74.17017	13:48:00	D	4.00
81	FAZILKA	FAZILKA	S-NPP	30.45572	74.17487	13:48:00	D	4.00
82	FAZILKA	FAZILKA	S-NPP	30.45772	74.01703	13:48:00	D	3.00
83	FAZILKA	FAZILKA	S-NPP	30.45951	73.97414	13:48:00	D	14.00
84	FAZILKA	FAZILKA	S-NPP	30.46305	74.00192	13:48:00	D	3.00
85	FAZILKA	FAZILKA	S-NPP	30.46306	73.97355	13:48:00	D	8.00
86	FAZILKA	FAZILKA	S-NPP	30.46478	74.07286	13:48:00	D	4.00
87	FAZILKA	FAZILKA	S-NPP	30.46829	74.12959	13:48:00	D	4.00
88	FAZILKA	FAZILKA	S-NPP	30.48372	73.93704	13:48:00	D	3.00
89	FAZILKA	FAZILKA	S-NPP	30.49261	73.97802	13:48:00	D	7.00
90	FAZILKA	FAZILKA	S-NPP	30.49621	74.03429	13:48:00	D	9.00
91	FAZILKA	FAZILKA	AQUA	30.50600	74.00800	13:20:00	D	26.00
92	FAZILKA	FAZILKA	AQUA	30.51000	74.00000	13:20:00	D	20.00
93	FAZILKA	FAZILKA	S-NPP	30.53321	74.04961	13:48:00	D	5.00
94	FAZILKA	JALALABAD	S-NPP	30.51654	74.30997	13:48:00	D	6.00
95	FAZILKA	JALALABAD	S-NPP	30.52479	74.11537	13:48:00	D	3.00
96	FAZILKA	JALALABAD	S-NPP	30.52552	74.26472	13:48:00	D	2.00

97	FAZILKA	JALALABAD	S-NPP	30.53152	74.28316	13:48:00	D	15.00
98	FAZILKA	JALALABAD	S-NPP	30.53262	74.17651	13:48:00	D	2.00
99	FAZILKA	JALALABAD	S-NPP	30.53574	74.31657	13:48:00	D	6.00
100	FAZILKA	JALALABAD	S-NPP	30.54844	74.14279	13:48:00	D	2.00
101	FAZILKA	JALALABAD	S-NPP	30.55188	74.20006	13:48:00	D	26.00
102	FAZILKA	JALALABAD	S-NPP	30.55312	74.18053	13:48:00	D	2.00
103	FAZILKA	JALALABAD	S-NPP	30.55415	74.20187	13:48:00	D	9.00
104	FAZILKA	JALALABAD	S-NPP	30.55552	74.29868	13:48:00	D	24.00
105	FAZILKA	JALALABAD	S-NPP	30.55922	74.11218	13:48:00	D	6.00
106	FAZILKA	JALALABAD	S-NPP	30.55977	74.33215	13:48:00	D	3.00
107	FAZILKA	JALALABAD	S-NPP	30.55985	74.08813	13:48:00	D	3.00
108	FAZILKA	JALALABAD	AQUA	30.57500	74.32800	13:20:00	D	13.00
109	FAZILKA	JALALABAD	S-NPP	30.58534	74.17516	13:48:00	D	11.00
110	FAZILKA	JALALABAD	S-NPP	30.58892	74.17457	13:48:00	D	3.00
111	FAZILKA	JALALABAD	S-NPP	30.58955	74.12150	13:48:00	D	5.00
112	FAZILKA	JALALABAD	AQUA	30.59600	74.18200	13:20:00	D	16.00
113	FAZILKA	JALALABAD	S-NPP	30.59611	74.11561	13:48:00	D	1.00
114	FAZILKA	JALALABAD	S-NPP	30.59726	74.21186	13:48:00	D	2.00
115	FAZILKA	JALALABAD	S-NPP	30.59771	74.33356	13:48:00	D	6.00
116	FAZILKA	JALALABAD	AQUA	30.60000	74.20100	13:20:00	D	22.00
117	FAZILKA	JALALABAD	S-NPP	30.60132	74.33296	13:48:00	D	13.00
118	FAZILKA	JALALABAD	AQUA	30.60500	74.41800	13:20:00	D	11.00
119	FAZILKA	JALALABAD	S-NPP	30.60742	74.20533	13:48:00	D	5.00
120	FAZILKA	JALALABAD	AQUA	30.61600	74.13100	13:20:00	D	14.00
121	FAZILKA	JALALABAD	AQUA	30.61700	74.41500	13:20:00	D	21.00
122	FAZILKA	JALALABAD	S-NPP	30.62057	74.25169	13:48:00	D	3.00
123	FAZILKA	JALALABAD	AQUA	30.62400	74.13400	13:20:00	D	13.00
124	FAZILKA	JALALABAD	S-NPP	30.62476	74.22668	13:48:00	D	76.00
125	FAZILKA	JALALABAD	AQUA	30.62700	74.21400	13:20:00	D	12.00
126	FAZILKA	JALALABAD	S-NPP	30.63071	74.18694	13:48:00	D	2.00
127	FAZILKA	JALALABAD	AQUA	30.63100	74.20800	13:20:00	D	15.00
128	FAZILKA	JALALABAD	S-NPP	30.63615	74.25883	13:48:00	D	14.00
129	FAZILKA	JALALABAD	S-NPP	30.63797	74.30245	13:48:00	D	12.00

130	FAZILKA	JALALABAD	S-NPP	30.63858	74.30724	13:48:00	D	27.00
131	FAZILKA	JALALABAD	S-NPP	30.63905	74.16623	13:48:00	D	8.00
132	FAZILKA	JALALABAD	S-NPP	30.63908	74.19523	13:48:00	D	5.00
133	FAZILKA	JALALABAD	S-NPP	30.63978	74.43498	13:48:00	D	9.00
134	FAZILKA	JALALABAD	S-NPP	30.64157	74.30186	13:48:00	D	4.00
135	FAZILKA	JALALABAD	S-NPP	30.64641	74.36973	13:48:00	D	3.00
136	FAZILKA	JALALABAD	S-NPP	30.64883	74.38903	13:48:00	D	2.00
137	FAZILKA	JALALABAD	S-NPP	30.65282	74.18812	13:48:00	D	3.00
138	FAZILKA	JALALABAD	S-NPP	30.65486	74.37818	13:48:00	D	13.00
139	FAZILKA	JALALABAD	S-NPP	30.65590	74.24097	13:48:00	D	10.00
140	FAZILKA	JALALABAD	S-NPP	30.66133	74.18810	13:48:00	D	11.00
141	FAZILKA	JALALABAD	S-NPP	30.66451	74.39632	13:48:00	D	2.00
142	FAZILKA	JALALABAD	S-NPP	30.66801	74.30728	13:48:00	D	11.00
143	FAZILKA	JALALABAD	S-NPP	30.66879	74.30865	13:48:00	D	25.00
144	FAZILKA	JALALABAD	S-NPP	30.67161	74.30669	13:48:00	D	8.00
145	FAZILKA	JALALABAD	AQUA	30.68900	74.31200	13:20:00	D	9.00
146	FAZILKA	JALALABAD	S-NPP	30.69042	74.30508	13:48:00	D	2.00
147	FAZILKA	JALALABAD	AQUA	30.69600	74.35000	13:20:00	D	17.00
148	FAZILKA	JALALABAD	S-NPP	30.70187	74.27870	13:48:00	D	5.00
149	FAZILKA	JALALABAD	S-NPP	30.70781	74.32674	13:48:00	D	19.00
150	FAZILKA	JALALABAD	S-NPP	30.70938	74.45996	13:48:00	D	2.00
151	FAZILKA	JALALABAD	S-NPP	30.71746	74.28591	13:48:00	D	12.00
152	FAZILKA	JALALABAD	S-NPP	30.71749	74.25658	13:48:00	D	7.00
153	FAZILKA	JALALABAD	S-NPP	30.72827	74.28413	13:48:00	D	3.00
154	FAZILKA	JALALABAD	S-NPP	30.76738	74.33168	13:48:00	D	3.00
155	LUDHIANA	JAGRAON	S-NPP	30.64809	75.42905	13:48:00	D	5.00
156	LUDHIANA	JAGRAON	S-NPP	30.65190	75.42847	13:48:00	D	5.00
157	MANSA	BUDHLADA	AQUA	29.91100	75.59700	13:20:00	D	17.00
158	MANSA	MANSA	S-NPP	30.13788	75.48125	13:48:00	D	3.00
159	MANSA	MANSA	S-NPP	30.16547	75.46342	13:48:00	D	3.00
160	MANSA	MANSA	S-NPP	30.16695	75.46600	13:48:00	D	5.00
161	MOGA	BAGHA PURANA	S-NPP	30.60028	74.96092	13:48:00	D	2.00
162	MUKTSAR	GIDDARBAHA	S-NPP	30.17992	74.58070	13:48:00	D	3.00

163	MUKTSAR	GIDDARBAHA	S-NPP	30.18752	74.67388	13:48:00	D	2.00
164	MUKTSAR	GIDDARBAHA	S-NPP	30.20629	74.70586	13:48:00	D	2.00
165	MUKTSAR	GIDDARBAHA	S-NPP	30.27952	74.64082	13:48:00	D	5.00
166	MUKTSAR	GIDDARBAHA	S-NPP	30.27988	74.63902	13:48:00	D	4.00
167	MUKTSAR	GIDDARBAHA	S-NPP	30.28454	74.59021	13:48:00	D	4.00
168	MUKTSAR	GIDDARBAHA	S-NPP	30.28598	74.65800	13:48:00	D	3.00
169	MUKTSAR	GIDDARBAHA	AQUA	30.28900	74.58300	13:20:00	D	10.00
170	MUKTSAR	GIDDARBAHA	S-NPP	30.31734	74.52542	13:48:00	D	3.00
171	MUKTSAR	GIDDARBAHA	S-NPP	30.32820	74.55334	13:48:00	D	7.00
172	MUKTSAR	GIDDARBAHA	S-NPP	30.33062	74.54305	13:48:00	D	3.00
173	MUKTSAR	GIDDARBAHA	S-NPP	30.36334	74.59731	13:48:00	D	3.00
174	MUKTSAR	GIDDARBAHA	S-NPP	30.37125	74.63097	13:48:00	D	2.00
175	MUKTSAR	GIDDARBAHA	S-NPP	30.38759	74.58344	13:48:00	D	3.00
176	MUKTSAR	GIDDARBAHA	S-NPP	30.38764	74.61334	13:48:00	D	2.00
177	MUKTSAR	GIDDARBAHA	S-NPP	30.38778	74.61545	13:48:00	D	3.00
178	MUKTSAR	GIDDARBAHA	S-NPP	30.38788	74.58549	13:48:00	D	4.00
179	MUKTSAR	GIDDARBAHA	S-NPP	30.39761	74.57393	13:48:00	D	29.00
180	MUKTSAR	GIDDARBAHA	S-NPP	30.41010	74.67702	13:48:00	D	13.00
181	MUKTSAR	GIDDARBAHA	S-NPP	30.41060	74.71222	13:48:00	D	4.00
182	MUKTSAR	GIDDARBAHA	S-NPP	30.41256	74.66657	13:48:00	D	12.00
183	MUKTSAR	GIDDARBAHA	S-NPP	30.41375	74.67643	13:48:00	D	14.00
184	MUKTSAR	GIDDARBAHA	AQUA	30.42000	74.65900	13:20:00	D	19.00
185	MUKTSAR	GIDDARBAHA	AQUA	30.42400	74.67700	13:20:00	D	13.00
186	MUKTSAR	GIDDARBAHA	S-NPP	30.42592	74.68453	13:48:00	D	5.00
187	MUKTSAR	GIDDARBAHA	S-NPP	30.44002	74.61699	13:48:00	D	11.00
188	MUKTSAR	MALAUT	S-NPP	29.93623	74.55977	13:48:00	D	7.00
189	MUKTSAR	MALAUT	S-NPP	29.93809	74.63313	13:48:00	D	5.00
190	MUKTSAR	MALAUT	AQUA	29.94300	74.55700	13:20:00	D	10.00
191	MUKTSAR	MALAUT	S-NPP	29.94529	74.57300	13:48:00	D	4.00
192	MUKTSAR	MALAUT	S-NPP	29.94891	74.57241	13:48:00	D	4.00
193	MUKTSAR	MALAUT	S-NPP	29.95756	74.54836	13:48:00	D	2.00
194	MUKTSAR	MALAUT	S-NPP	29.95779	74.46059	13:48:00	D	5.00
195	MUKTSAR	MALAUT	S-NPP	29.96080	74.45525	13:48:00	D	5.00

196	MUKTSAR	MALAUT	S-NPP	29.96649	74.59106	13:48:00	D	10.00
197	MUKTSAR	MALAUT	S-NPP	29.97788	74.62367	13:48:00	D	2.00
198	MUKTSAR	MALAUT	S-NPP	29.98395	74.61283	13:48:00	D	4.00
199	MUKTSAR	MALAUT	S-NPP	29.98454	74.61766	13:48:00	D	4.00
200	MUKTSAR	MALAUT	S-NPP	29.98839	74.47015	13:48:00	D	4.00
201	MUKTSAR	MALAUT	S-NPP	29.99200	74.46957	13:48:00	D	4.00
202	MUKTSAR	MALAUT	S-NPP	29.99319	74.47910	13:48:00	D	12.00
203	MUKTSAR	MALAUT	S-NPP	29.99495	74.52270	13:48:00	D	2.00
204	MUKTSAR	MALAUT	AQUA	29.99900	74.46300	13:20:00	D	21.00
205	MUKTSAR	MALAUT	S-NPP	30.00278	74.52632	13:48:00	D	27.00
206	MUKTSAR	MALAUT	S-NPP	30.00401	74.47733	13:48:00	D	3.00
207	MUKTSAR	MALAUT	S-NPP	30.00519	74.51615	13:48:00	D	3.00
208	MUKTSAR	MALAUT	S-NPP	30.01241	74.54432	13:48:00	D	9.00
209	MUKTSAR	MALAUT	S-NPP	30.01712	74.70156	13:48:00	D	4.00
210	MUKTSAR	MALAUT	S-NPP	30.02079	74.67115	13:48:00	D	3.00
211	MUKTSAR	MALAUT	AQUA	30.03600	74.59100	13:20:00	D	30.00
212	MUKTSAR	MALAUT	AQUA	30.03800	74.56400	13:20:00	D	21.00
213	MUKTSAR	MALAUT	AQUA	30.04400	74.56900	13:20:00	D	14.00
214	MUKTSAR	MALAUT	S-NPP	30.04499	74.56847	13:48:00	D	12.00
215	MUKTSAR	MALAUT	S-NPP	30.04861	74.56788	13:48:00	D	12.00
216	MUKTSAR	MALAUT	S-NPP	30.05049	74.64158	13:48:00	D	4.00
217	MUKTSAR	MALAUT	S-NPP	30.05094	74.49893	13:48:00	D	4.00
218	MUKTSAR	MALAUT	S-NPP	30.05146	74.50048	13:48:00	D	3.00
219	MUKTSAR	MALAUT	S-NPP	30.05948	74.56612	13:48:00	D	3.00
220	MUKTSAR	MALAUT	S-NPP	30.05967	74.56778	13:48:00	D	3.00
221	MUKTSAR	MALAUT	S-NPP	30.06082	74.66470	13:48:00	D	4.00
222	MUKTSAR	MALAUT	S-NPP	30.06413	74.48375	13:48:00	D	4.00
223	MUKTSAR	MALAUT	S-NPP	30.06928	74.58592	13:48:00	D	9.00
224	MUKTSAR	MALAUT	S-NPP	30.07391	74.65443	13:48:00	D	3.00
225	MUKTSAR	MALAUT	S-NPP	30.07437	74.47720	13:48:00	D	4.00
226	MUKTSAR	MALAUT	S-NPP	30.07476	74.65749	13:48:00	D	4.00
227	MUKTSAR	MALAUT	S-NPP	30.07497	74.48199	13:48:00	D	4.00
228	MUKTSAR	MALAUT	S-NPP	30.08094	74.50056	13:48:00	D	7.00

229	MUKTSAR	MALAUT	S-NPP	30.08639	74.48499	13:48:00	D	4.00
230	MUKTSAR	MALAUT	S-NPP	30.09059	74.48920	13:48:00	D	12.00
231	MUKTSAR	MALAUT	S-NPP	30.09953	74.56129	13:48:00	D	6.00
232	MUKTSAR	MALAUT	S-NPP	30.10447	74.42357	13:48:00	D	3.00
233	MUKTSAR	MALAUT	S-NPP	30.10681	74.53063	13:48:00	D	4.00
234	MUKTSAR	MALAUT	S-NPP	30.11707	74.52406	13:48:00	D	1.00
235	MUKTSAR	MALAUT	S-NPP	30.13938	74.52532	13:48:00	D	6.00
236	MUKTSAR	MALAUT	S-NPP	30.16360	74.35831	13:48:00	D	8.00
237	MUKTSAR	MALAUT	S-NPP	30.30842	74.36510	13:48:00	D	3.00
238	MUKTSAR	MALAUT	S-NPP	30.32824	74.46452	13:48:00	D	7.00
239	MUKTSAR	MALAUT	S-NPP	30.33303	74.38541	13:48:00	D	1.00
240	MUKTSAR	MALAUT	S-NPP	30.36247	74.38546	13:48:00	D	4.00
241	MUKTSAR	MUKTSAR	S-NPP	30.33969	74.49709	13:48:00	D	3.00
242	MUKTSAR	MUKTSAR	S-NPP	30.34333	74.52613	13:48:00	D	3.00
243	MUKTSAR	MUKTSAR	S-NPP	30.36332	74.56749	13:48:00	D	18.00
244	MUKTSAR	MUKTSAR	S-NPP	30.36695	74.56689	13:48:00	D	19.00
245	MUKTSAR	MUKTSAR	S-NPP	30.37027	74.41051	13:48:00	D	9.00
246	MUKTSAR	MUKTSAR	S-NPP	30.37483	74.57059	13:48:00	D	7.00
247	MUKTSAR	MUKTSAR	AQUA	30.37500	74.42000	13:20:00	D	13.00
248	MUKTSAR	MUKTSAR	S-NPP	30.38088	74.55968	13:48:00	D	3.00
249	MUKTSAR	MUKTSAR	S-NPP	30.39523	74.55443	13:48:00	D	6.00
250	MUKTSAR	MUKTSAR	S-NPP	30.39642	74.56418	13:48:00	D	2.00
251	MUKTSAR	MUKTSAR	S-NPP	30.39736	74.39137	13:48:00	D	4.00
252	MUKTSAR	MUKTSAR	S-NPP	30.41293	74.45755	13:48:00	D	4.00
253	MUKTSAR	MUKTSAR	S-NPP	30.41520	74.56609	13:48:00	D	4.00
254	MUKTSAR	MUKTSAR	S-NPP	30.42619	74.47511	13:48:00	D	7.00
255	MUKTSAR	MUKTSAR	S-NPP	30.42907	74.61876	13:48:00	D	8.00
256	MUKTSAR	MUKTSAR	S-NPP	30.46310	74.59324	13:48:00	D	8.00
257	MUKTSAR	MUKTSAR	S-NPP	30.50418	74.53853	13:48:00	D	3.00
258	MUKTSAR	MUKTSAR	S-NPP	30.50782	74.53793	13:48:00	D	3.00
259	MUKTSAR	MUKTSAR	S-NPP	30.54175	74.54239	13:48:00	D	3.00
260	MUKTSAR	MUKTSAR	S-NPP	30.54915	74.49751	02:30:00	N	2.00
261	MUKTSAR	MUKTSAR	S-NPP	30.55085	74.49614	13:48:00	D	3.00

262	MUKTSAR	MUKTSAR	S-NPP	30.55090	74.49626	02:30:00	N	5.00
263	MUKTSAR	MUKTSAR	S-NPP	30.55279	74.49844	02:30:00	N	2.00
264	MUKTSAR	MUKTSAR	S-NPP	30.61657	74.57829	13:48:00	D	2.00
265	SANGRUR	SANGRUR	S-NPP	30.20861	75.63741	13:48:00	D	3.00
266	SANGRUR	SANGRUR	AQUA	30.20900	75.63900	13:20:00	D	9.00

Details of residue burning events in Haryana on 17-Nov-2020

S. No.	District	Tehsil / Block	Satellite	Latitude	Longitude	Time (IST)	Day / Night	Fire Power (W/m²)
1	AMBALA	BARARA	S-NPP	30.25988	77.09060	13:48:00	D	8.00
2	FATEHABAD	FATEHABAD	S-NPP	29.58432	75.52999	13:48:00	D	4.00
3	FATEHABAD	RATIA	S-NPP	29.74641	75.59958	13:48:00	D	2.00
4	KURUKSHETRA	THANESAR	S-NPP	30.02674	76.82056	13:48:00	D	4.00
5	PANIPAT	SAMALKHA	S-NPP	29.38353	77.07478	13:48:00	D	2.00
6	ROHTAK	ROHTAK	S-NPP	28.80315	76.35601	02:30:00	N	2.00
7	SIRSA	DABWALI	S-NPP	29.88968	74.92386	13:48:00	D	3.00
8	SIRSA	ELLENABAD	S-NPP	29.42977	74.89282	13:48:00	D	3.00
9	SIRSA	ELLENABAD	AQUA	29.44100	74.88100	13:20:00	D	26.00
10	SIRSA	ELLENABAD	S-NPP	29.45158	74.77245	13:48:00	D	3.00
11	SIRSA	ELLENABAD	S-NPP	29.46882	74.61346	13:48:00	D	4.00
12	SIRSA	SIRSA	S-NPP	29.44379	74.91549	13:48:00	D	2.00
13	SIRSA	SIRSA	S-NPP	29.45897	74.92493	13:48:00	D	5.00
14	SONIPAT	GOHANA	S-NPP	29.09729	76.70799	13:48:00	D	8.00
15	SONIPAT	GOHANA	S-NPP	29.16270	76.73610	13:48:00	D	3.00

Details of residue burning events in Uttar Pradesh on 17-Nov-2020

S. No.	District	Tehsil / Block	Satellite	Latitude	Longitude	Time (IST)	Day / Night	Fire Power (W/m ²)
1	ALIGARH	KHAIR	S-NPP	28.11108	77.60780	13:48:00	D	4.00
2	ALLAHABAD	KARCHHANA	S-NPP	25.21305	81.89820	00:54:00	N	2.00
3	AZAMGARH	PHULPUR	S-NPP	25.92340	82.86709	12:06:00	D	5.00
4	AZAMGARH	PHULPUR	S-NPP	25.93000	82.86502	12:06:00	D	5.00
5	AZAMGARH	PHULPUR	S-NPP	25.98229	82.75445	13:48:00	D	5.00
6	AZAMGARH	PHULPUR	S-NPP	25.98542	82.75365	13:48:00	D	8.00
7	AZAMGARH	SAGRI	S-NPP	26.16395	83.34580	13:48:00	D	4.00
8	BALLIA	BALLIA	AQUA	25.76500	84.02600	13:20:00	D	6.00
9	BALLIA	RASRA	AQUA	25.98300	83.92300	13:20:00	D	14.00
10	BALLIA	SIKANDARPUR	AQUA	25.91400	83.97900	13:20:00	D	24.00
11	BALLIA	SIKANDARPUR	AQUA	25.92300	83.97700	13:20:00	D	5.00
12	BALLIA	SIKANDARPUR	AQUA	26.00400	83.95800	13:20:00	D	7.00
13	BANDA	BANDA	S-NPP	25.51972	80.47220	13:48:00	D	7.00
14	BULANDSAHAR	BULANDSHAHR	AQUA	28.44500	77.96400	13:20:00	D	8.00
15	GORAKHPUR	GORAKHPUR	METOP-2	26.79548	83.57735	19:41:00	N	7.00
16	GORAKHPUR	GORAKHPUR	AQUA	26.93000	83.37100	13:20:00	D	5.00
17	JHANSI	MOTH	S-NPP	25.78732	78.90395	13:48:00	D	5.00
18	KAUSHAMBI	MANJHANPUR	AQUA	25.46600	81.25400	13:20:00	D	4.00
19	KAUSHAMBI	MANJHANPUR	S-NPP	25.47165	81.25620	13:48:00	D	3.00
20	KAUSHAMBI	SIRATHU	S-NPP	25.53424	81.26610	13:48:00	D	2.00
21	KHERI	LAKHIMPUR	S-NPP	28.13447	80.88030	13:48:00	D	2.00
22	KUSHINAGAR	HATA	S-NPP	26.84309	83.70685	13:48:00	D	3.00
23	MAHARAJGANJ	MAHARAJGANJ	S-NPP	26.98592	83.63792	00:48:00	N	1.00
24	MAHARAJGANJ	MAHARAJGANJ	S-NPP	27.19420	83.61636	12:06:00	D	2.00
25	MAINPURI	BHOGAON	AQUA	27.12700	79.27500	13:20:00	D	4.00
26	MEERUT	MAWANA	S-NPP	28.94582	77.94359	13:48:00	D	4.00
27	MEERUT	MEERUT	S-NPP	29.05165	77.61938	13:48:00	D	6.00
28	MEERUT	SARDHANA	S-NPP	29.18546	77.67599	13:48:00	D	3.00
29	MORADABAD	BILARI	S-NPP	28.63569	78.74303	13:48:00	D	4.00
30	MUZAFARNAGAR	BUDHANA	S-NPP	29.42367	77.50587	13:48:00	D	2.00

31	PRATAPGARH	KUNDA	AQUA	25.68000	81.71700	13:20:00	D	5.00
32	RAMPUR	BILASPUR	AQUA	28.91600	79.42200	13:20:00	D	7.00
33	SAMBHAL	CHANDAUSI	S-NPP	28.42427	78.61700	13:48:00	D	4.00
34	SANTRAVIDASNAGAR	AURAI	AQUA	25.30100	82.67300	13:20:00	D	10.00
35	SIDDHARTHANAGAR	BANSI	AQUA	27.12000	82.87000	13:20:00	D	5.00
36	SIDDHARTHANAGAR	BANSI	AQUA	27.15100	82.90100	13:20:00	D	5.00
37	SIDDHARTHANAGAR	ITWA	S-NPP	27.21655	82.74406	13:48:00	D	4.00
38	SIDDHARTHANAGAR	ITWA	S-NPP	27.37371	82.64395	13:48:00	D	2.00

The study used images received from following Satellites at IARI Satellite Ground Station

S. No.	Satellite Name	Sensor	Resolution (meter)	Day / Night Passes
1.	Suomi NPP	VIIRS	375 / 750	Both
2.	Terra	MODIS	1000	Both
3.	Aqua	MODIS	1000	Both
4.	NOAA – 18	AVHRR	1000	Night
5.	NOAA – 19	AVHRR	1000	Night
6.	Metop - 1	AVHRR	1000	Night
7.	Metop - 2	AVHRR	1000	Night

Study Team

ICAR – HQ	Dr K. Alagusundaram	DDG (AG. ENGG.)	ddgengg@icar.org.in
	Dr S. Bhasker	ADG (NRM)	adgagroandaf@gmail.com
	Dr K.K. Singh	ADG (AG. ENGG.)	kanchansingh044@gmail.com
ICAR - IARI	Dr V.K. Sehgal	Professor & Nodal Scientist	iaricreams@gmail.com
	Dr Rajkumar Dhakar	Scientist	raidhakar.iari@gmail.com
	Mr Rakeswer Verma	Chief Technical Officer	rakeshwar.verma@icar.gov.in
	Mr Mohd Jahangir	Lab Assistant (KRISHI)	mjahangir198@gmail.com
ICAR - ATARI	Dr Rajbir Singh	Director ATARI (Zone-I) Ludhiana	rajbirsingh.zpd@gmail.com
	Dr S.K. Singh	Director ATARI (Zone-II) Jodhpur	sushilsinghiipr@yahoo.co.in
	Dr Atar Singh	Director ATARI (Zone-III) Kanpur	zpdicarkanpur@gmail.com
ICAR - IASRI	Dr Rajender Parsad	Director IASRI	rajender.parsad@icar.gov.in

Softcopy of this report and latest statistics can be seen on <http://creams.iari.res.in>

GIS Maps of fire events can be visualized online on ICAR KRISHI Geoportal website: <http://geoportal.icar.gov.in:8080/geoexplorer/composer/>

(Part of KRISHI Portal: <https://krishi.icar.gov.in> initiative)
