

All India Coordinated Research Project on Agrometeorology

CRIDA, Santoshnagar, Hyderabad – 500 059

Daily Crop Weather Information as on 18 November 2020

Attention: Rajiv Maheshwari, OSD, ICAR

Significant Weather Features (IMD)

- A cyclonic circulation lies over southeast & adjoining southwest Arabian Sea in the lower levels and a trough runs from this cyclonic circulation to Comorin area at lower levels. Under its influence, fairly widespread to widespread rainfall accompanied with thunderstorm & lightning and isolated heavy rainfall very likely over Kerala and Lakshadweep on 18th & 19th November, 2020 and decrease significantly thereafter.
- Under the influence of above trough, a Low Pressure Area is likely to form over central parts of South Arabian Sea around 19th November, 2020. It is very likely to move west-northwestwards and concentrate into a Depression over central parts of South Arabian sea and adjoining central Arabian sea during subsequent 48 hours.
- Under the influence of a fresh easterly wave, fairly widespread to widespread rainfall accompanied with thunderstorm & lightning and isolated heavy rainfall very likely over Andaman & Nicobar Islands.
- Northeast monsoon rainfall activity very likely to be subdued over southeast peninsular India during next 4-5 days.
- Minimum temperatures are very likely to fall gradually by 2-4°C over northwest India and Madhya Pradesh during next 4-5 days.
- The images showing the latest satellite picture in the figure. 1.

Main Weather Observations (IMD)

- Rain/Thundershowers observed (from 0830 hours IST of yesterday to 0830 hours IST of today): at most places over Tamil Nadu, Puducherry & Karaikal, Kerala & Mahe and Lakshadweep; at many places over Rayalaseema; at a few places over Arunachal Pradesh; at isolated places over Coastal & South Interior Karnataka, south Coastal Andhra Pradesh, north Madhya Pradesh and Assam & Meghalaya. Thunderstorm (from 0830 of yesterday to 0830 hours IST of today) observed at isolated place over Tamil Nadu, Puducherry & Karaikal, Kerala and Lakshadweep.
- Maximum Temperature Departures as on 17-11-2020: Maximum temperatures were appreciably above normal (5.0°C or more) at isolated places over Odisha; appreciably above normal (3.1°C to 5.0°C) at many places over Vidarbha and Chhattisgarh; at isolated places over south Madhya Pradesh, Assam & Meghalaya, Madhya Maharashtra, Gangetic West Bengal, rest Odisha, Konkan & Goa and Telangana; above normal (1.6°C to 3.0°C) at most places over Jharkhand and Coastal Karnataka; at a few places over rest Madhya Pradesh & Marathwada and at isolated places over Sub-Himalayan West Bengal & Sikkim and Kerala. They were Markedly below normal (- 5.1°C and less) at isolated places over Rajasthan; appreciably below normal (-3.1°C to - 5.0°C) at many places over Himachal Pradesh; at a few places over Punjab, Haryana, Chandigarh & Delhi, rest Rajasthan and at isolated places over Jammu & Kashmir, Ladakh, Gilgit-Baltistan & Muzaffarabad & Saurashtra & Kutch; below normal (-1.6°C to - 3.0°C) at many places over West Uttar Pradesh and Tamil Nadu, Puducherry & Karaikal and at isolated places over East Uttar Pradesh and Bihar and near normal over rest parts of the country. Yesterday, the highest maximum temperature of 37.7°C was reported at Vengurla (Konkan & Goa).
- Minimum Temperature Departures as on 18-11-2020: Minimum temperatures are markedly above normal (5.1 to more) at a few places over West Madhya Pradesh; appreciably above normal (3.1°C to 5.0°C) at most places over Madhya Maharashtra, Marathwada and Chhattisgarh; at many places over East Madhya Pradesh; at a few places over Vidarbha, Jharkhand, Konkan & Goa and Coastal Karnataka and at isolated places over East Uttar Pradesh, Odisha and Gangetic West Bengal; above normal (1.6°C to 3.0°C) at most places over Andaman & Nicobar Islands; at a few places over East Rajasthan, Bihar and Assam & Meghalaya. They are appreciably below normal (-3.1°C to - 5.0°C) at isolated places over Jammu & Kashmir, Ladakh, Gilgit-Baltistan & Muzaffarabad; below normal (-1.6°C to - 3.0°C) at isolated places over West Rajasthan, Haryana,

Chandigarh & Delhi and Sub-Himalayan West Bengal & Sikkim and near normal over rest parts of the country. Today, the lowest minimum temperature of 8.3°C reported at Churu (West Rajasthan) over the plains of the country.

Weather Warning during the next 5 days (IMD)

- 18 November (Day 1): Heavy rainfall very likely at isolated places over Kerala & Mahe and Lakshadweep. Thunderstorm with lightning very likely at isolated places over Arunachal Pradesh, Assam & Meghalaya, south Konkan & Goa, Coastal Andhra Pradesh& Yanam, Rayalseema, Coastal Karnataka, Tamil Nadu, Puducherry & Karaikal, Kerala & Mahe and Lakshadweep. Squally weather (wind speed reaching 45-55 kmph gusting to 65 kmph) very likely to prevail over Kerala-Karnataka-Lakshadweep coasts; squally weather (wind speed reaching 40-50 kmph gusting to 60 kmph) very likely over southeast Arabian Sea. Fishermen are advised not to venture into these areas.
- 19 November (Day 2): Heavy rainfall very likely at isolated places over Kerala & Mahe and Lakshadweep. Thunderstorm with lightning very likely at isolated places over Tamil Nadu, Puducherry & Karaikal, Kerala & Mahe and Lakshadweep. Squally weather (wind speed reaching 45-55 kmph gusting to 65 kmph) very likely to prevail over southeast Arabian Sea, eastcentral Arabian Sea and Lakshadweep coast. Fishermen are advised not to venture into these areas.
- 20 November (Day 3): Strong winds (speed reaching 45-55 kmph) likely over southeast, eastcentral and westcentral Arabian Sea. Fishermen are advised not to venture into these areas.
- 21 November (Day 4): Heavy rainfall likely at isolated places over Andaman & Nicobar Islands. Strong winds (speed reaching 45-55 kmph) southeast, eastcentral, westcentral and southwest Arabian Sea. Fishermen are advised not to venture into these areas.
- 22 November (Day 5): Heavy rainfall likely at isolated places over Andaman & Nicobar Islands. Strong winds (speed reaching 45-55 kmph) southeast, eastcentral, westcentral and southwest Arabian Sea. Fishermen are advised not to venture into these areas.
- The weather outlook for seven days i.e., 18 to 26 November 2020 forecasted (Provided by Real-Time Weather Forecasts from NOAA/NCEP collected from <http://monsoondata.org/wx2/>) rain/thundershower may occur over Some parts of Extreme northern parts of India. (Fig. 2).

Agricultural activities (AICRPAM-CRIDA)

Konkan

Weather condition:

Atmospheric condition was cloudy during morning hours around Dapoli during last week. Therefore 9.3 to 10.3 Bright sunshine hours was recorded during last week. During last week 0.0 mm rainfall was recorded at Agrometeorological observatory, Dr. B.S.K.K.V. Dapoli. The maximum and minimum temperature ranged from 32.2 to 33.2 and 11.9 to 19.5 oC respectively. Wind velocity ranged from 1.7 to 3.0 km and wind was blowing from south westerly Direction.

Contingency measure:

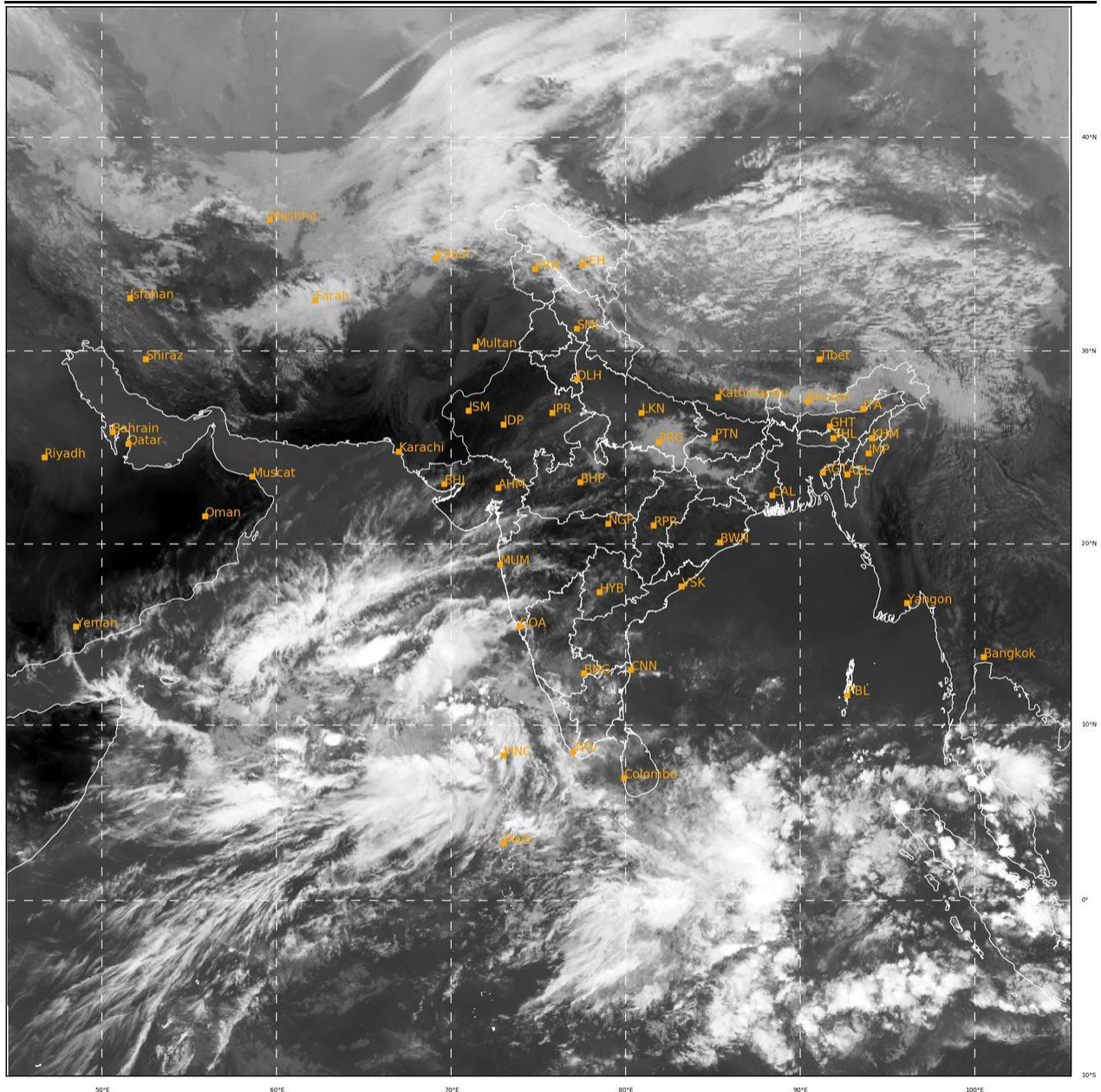
- **Lablab bean:**For cultivation of lablab bean by land preparation, plough the soil after harvest of kharif rice when it is in field capacity. Incorporate 2 tonne/acre FYM or compost at the time of ploughing. Sow lablab bean @ 30 to 45 kg/ ha by dibbling at a spacing of 30 x 15 cm or 30 x 20 cm or 30 x 30 cm. apply 540 gms urea and 3 kg Single Super Phosphate per guntha at the time of sowing below the seed at 5 cm depth. Provide light irrigation after sowing.Treat the seed with Thiram fungicide @3 gm/kg of seeds before sowing. After that treat the seed with Rhizobium biofertilizers @ 25 gms per kg and dry it shed one hours before sowing.
- **Cowpea:**Plough the field for cultivation of cowpea and incorporate FYM or compost @ 2 tonnes/acre at the time of last ploughing. prepare check basin of 4 X 3 m size leaving furrow of 30 cm for irrigation between alternate two beds. Sow seed at a spacing of 30 X 15 cm. Apply 65 gms urea, 450 gms single Super Phosphate and 80 gms of muriate of potash per check basin before sowing.Konkan sadabahar and Konkan safed are the varieties recommended by D.B.S.K.K.V., for cultivation in Konkan region. Use 6-8 kg seed /acre.Treat the seed with Thiram fungicide @3 gm/kg or Trichoderma 5 gms/kg and with Rhizobium and PSB biofertilizers @ 25 gms per kg of seed before sowing
- **Groundnut:**For cultivation of groundnut, carryout ploughing operation and incorporate 2 tonnes/acre FYM or compost at the time of ploughing. Konkan gaurav, Konkan trombe tapora, Konkan bhuratna, T.G. 26, S.B. 11, T.A.G.-24 and Phule pragati are the varieties recommended by D.B.S.K.K.V., for cultivation in Konkan region. Use 40-50 kg seed/acre. For cultivation of groundnut on transparent polythene mulch, carryout ploughing operation and prepare raised bed of a top width of 60 cm and 5-7 cm height leaving 30 cm distance on either side of bed. Incorporate 4 to 6 tonne/ acre well decomposed FYM at the time of bed preparation
- **Mango:**Variation in temperature leads to favorable weather for flower induction in mango. To protect the inflorescence from pest and powdery mildew diseases, as per

mango blossom protection schedule recommended by university, spray Lambda cyhalothrin 5%EC @ 6 ml + hexaconazole @ 5 ml or wettable Sulphur 80% @ 20 gm per 10 liter in water at the time of flower bud opening stage. Provide irrigation to re-established orchard those disturb due to Nisarg cyclone. Also thin excess shoot by keeping 3 to 5 shoots.

- Cashewnut: There is congenial weather situation of flower bud opening in cashewnut, to protect the cashew inflorescence from tea mosquito bug and thrips incidence, spray Profenophos 50% EC @10 ml per 10 liter of water. (The insecticide is not under label claim). To improve fruit setting and production of cashewnut, take 2nd spray of 10 PPM ethrel at the flowering stage.
- Chilli: There is possibility of incidence of leaf curl disease in chilli due to thrips, white flies and mites which results into curling of leaves and stunted growth of plant. For management spray 10% cow urine and Azadirachtin 10000 PPM @ 3 ml per liter of water, alternatively at an interval of 7 days after transplanting. Install blue sticky trap in field.
- Water melon: If incidence of wilt disease is noticed on watermelon, drenching of carbendazim @1 gm per liter is suggested.
- Vegetable crop/nursery: There is forecast of decrease in minimum temperature, Provide irrigation to vegetable crop and grafts, sapling of fruit crop nursery at evening hours.
- Milch animal: Protect the farm animals from low temperature by providing curtains and electric bulbs during night time.
- Poultry: Protect the poultry birds from low temperature by providing curtains and electric bulbs during night time

SAT : INSAT-3D IMG
IMG_TIR1 10.8 um
LIC Mercator

18-11-2020/(0800 to 0827) GMT
18-11-2020/(1330 to 1357) IST



399

954

IMD, DELHI

Figure: 1. Latest available satellite picture as on 18 November 2020 at 1357 Hrs (IST). (Source: IMD).

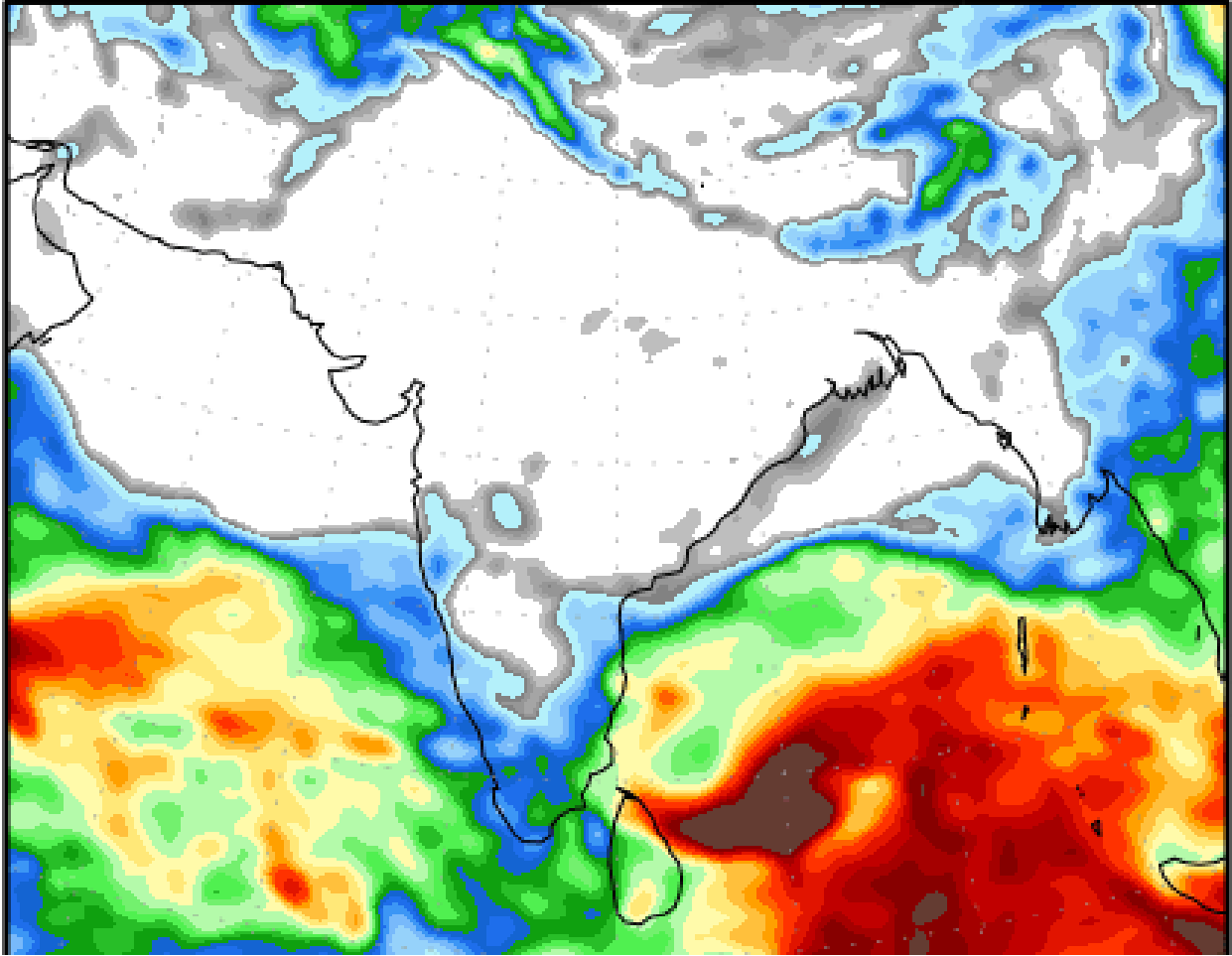


Figure:2. Precipitation forecast for 18 to 26 November 2020 (Source: NOAA NCEP).

Disclaimer: The predictability of weather depends on many dynamic factors. The success of Agromet advisories provided here depends on the accuracy of the forecasts. In no event will India Meteorological Department (IMD) and Indian Council of Agricultural Research (ICAR) be liable to the user or any third party for any direct, indirect, incidental, consequential, special or exemplary damages or lost profit resulting from any use or misuse of the information on this bulletin.