

Molecular mapping of a new recessive wheat leaf rust resistance gene originating from *Triticum spelta*

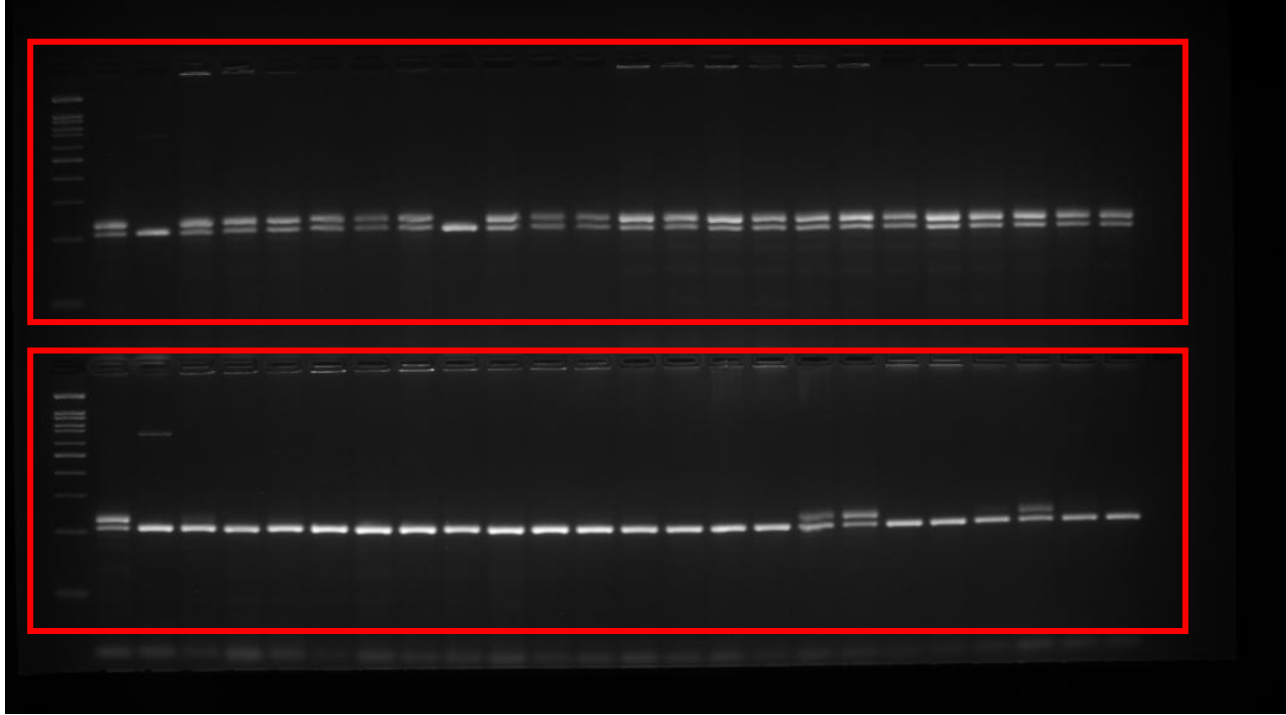
Vishal Dinkar, S.K. Jha, Niharika Mallick, M. Niranjana, Priyanka Agarwal, J.B. Sharma and Vinod*

Division of Genetics, ICAR- Indian Agricultural Research Institute, New Delhi-110012, India

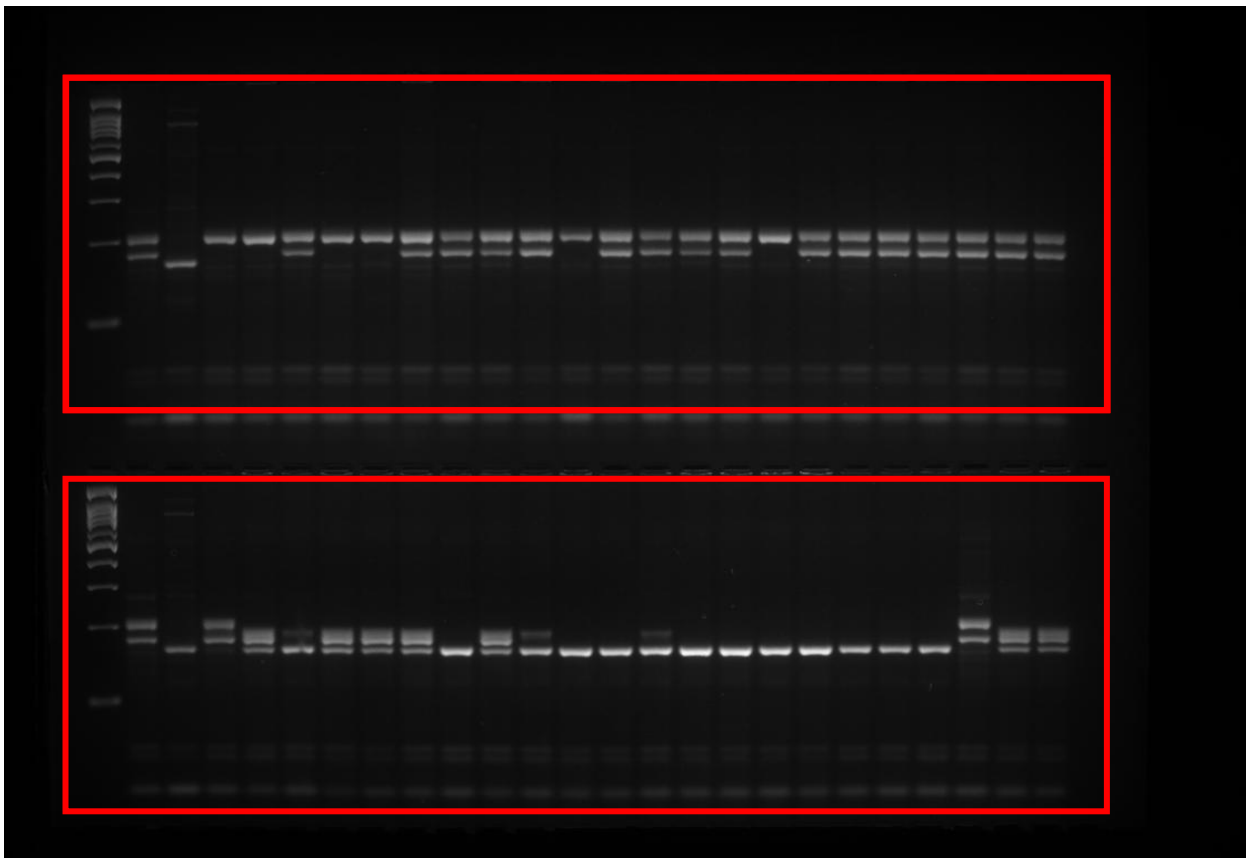
1. Vishal Dinkar <vishaldinkar1991@gmail.com>
Division of Genetics, ICAR-Indian Agricultural Research Institute
2. S K Jha <jhashail78@gmail.com>
Division of Genetics, ICAR-Indian Agricultural Research Institute
3. Niharika Mallick <niharikamallick@gmail.com>
Division of Genetics, ICAR-Indian Agricultural Research Institute
4. M Niranjana <mniranjana2010@gmail.com>
Division of Genetics, ICAR-Indian Agricultural Research Institute
5. Priyanka Agarwal <priyankaagarwal11@gmail.com>
Division of Genetics, ICAR-Indian Agricultural Research Institute
6. Jai Sharma <jbsiari@gmail.com>
Division of Genetics, ICAR-Indian Agricultural Research Institute
7. Vinod (corresponding author) <vinod.genetics@gmail.com>
Division of Genetics, ICAR-Indian Agricultural Research Institute

Supplementary Information 2: Full-length gels of Supplementary figure S1 (a-h) online. Red squares are marking cropped parts of gels presented in the Supplementary figure S1.

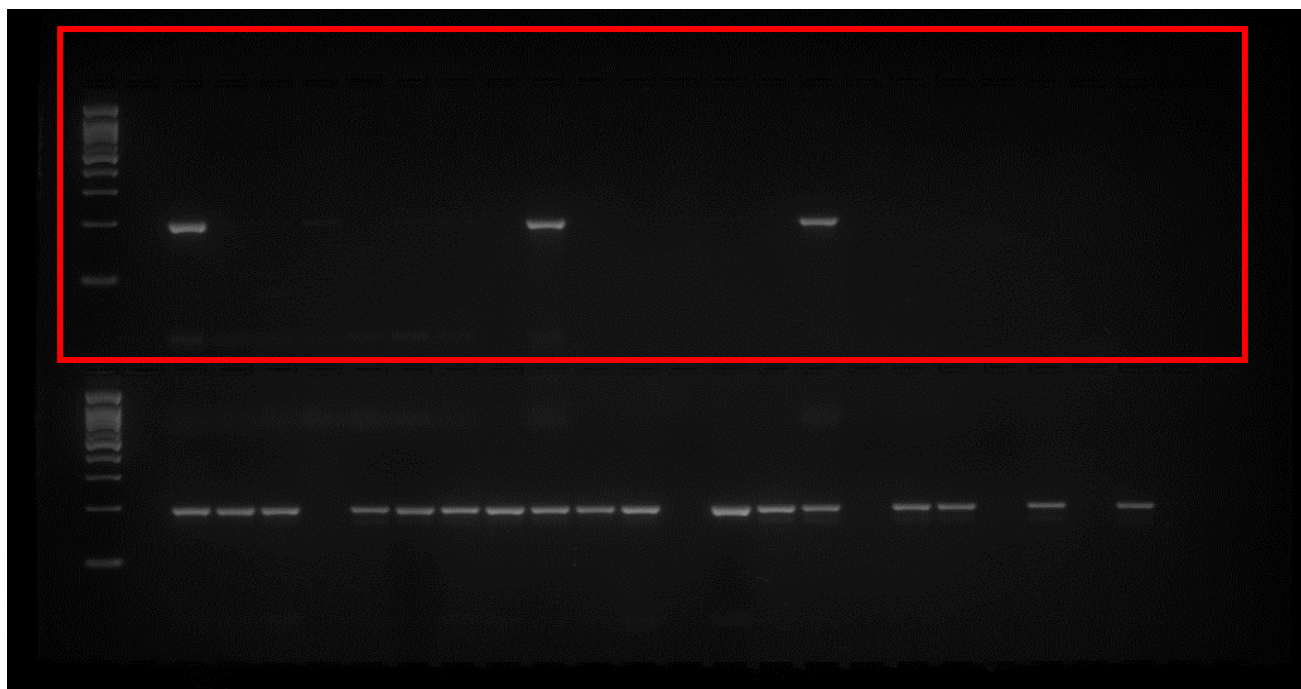
Supplementary figure S1- a and b:



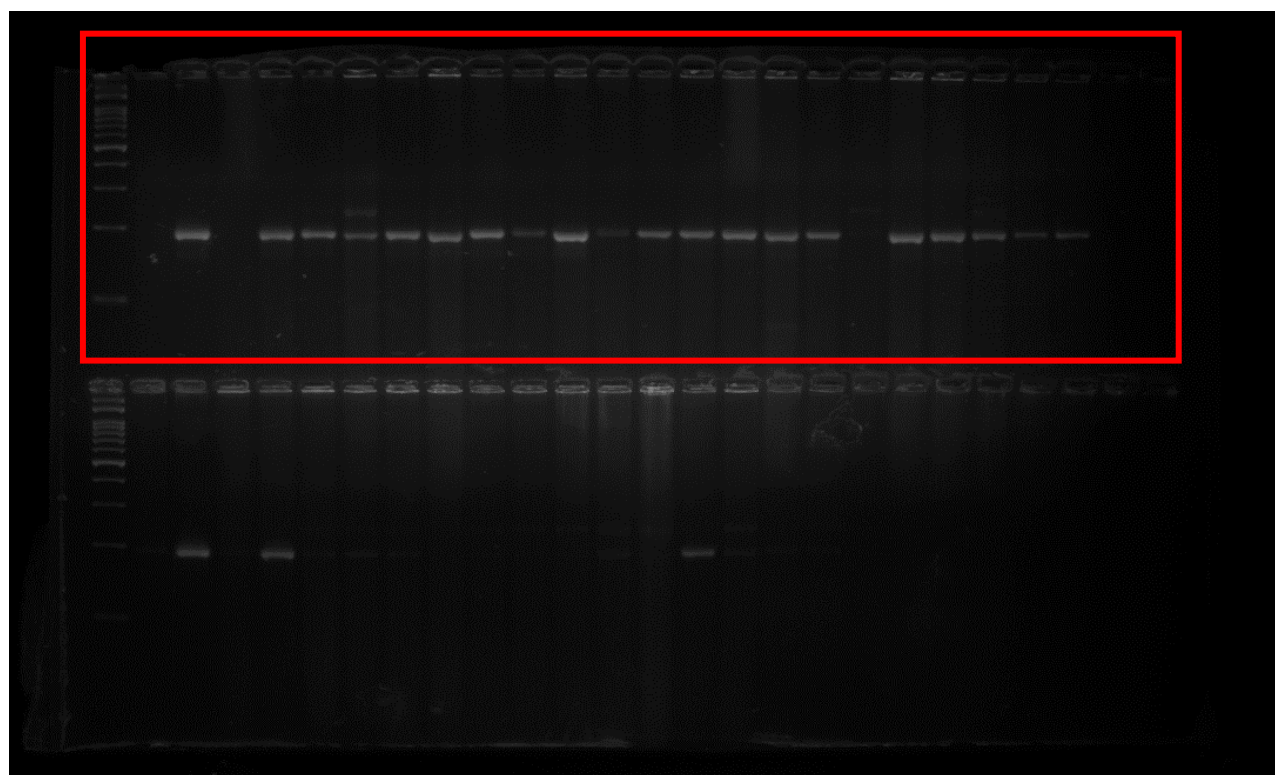
Supplementary figure S1- c and d:



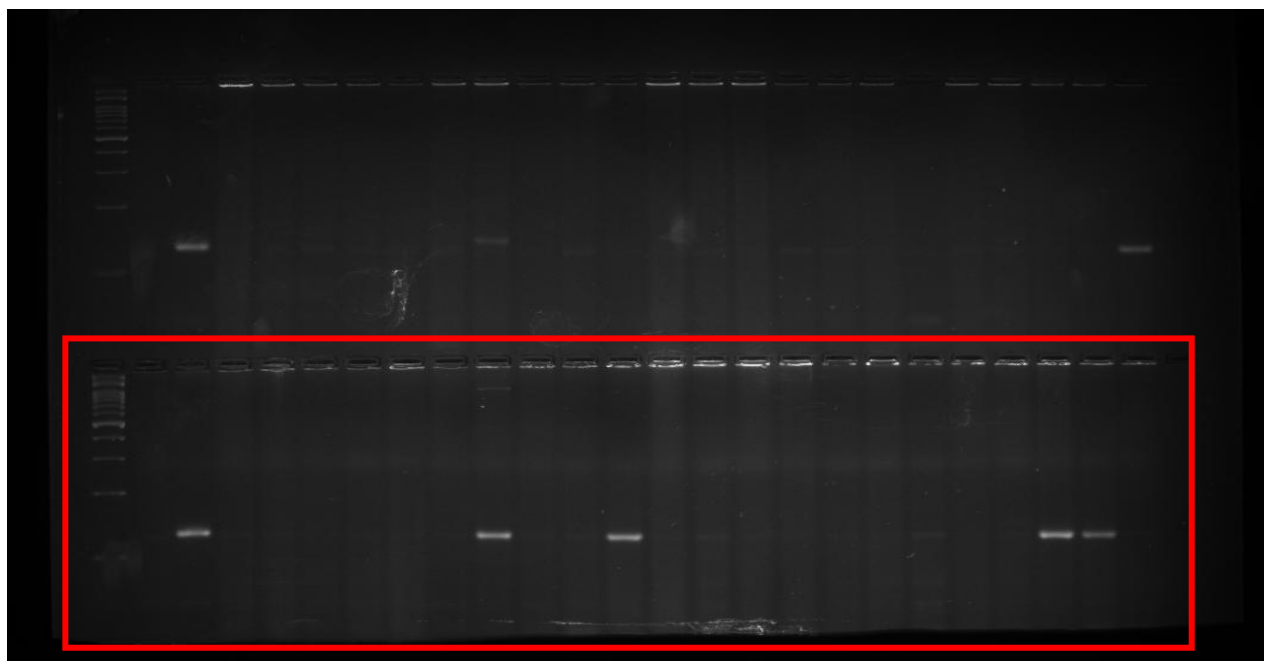
Supplementary figure S1- e:



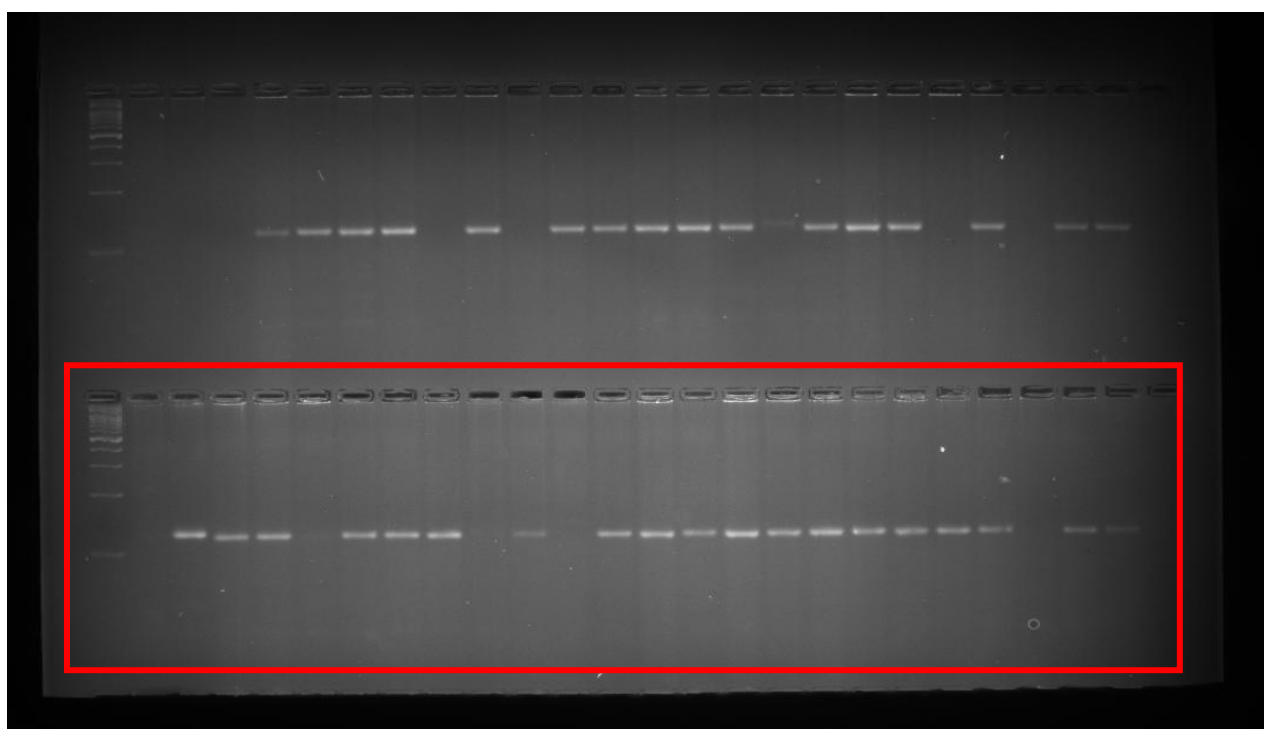
Supplementary figure S1- f:



Supplementary figure S1- g:



Supplementary figure S1- h:



Supplementary Information 3: Full-length gels of Figure 2 (a-d). Red squares are marking cropped parts of gels presented in the manuscript.

Figure 2 (a):

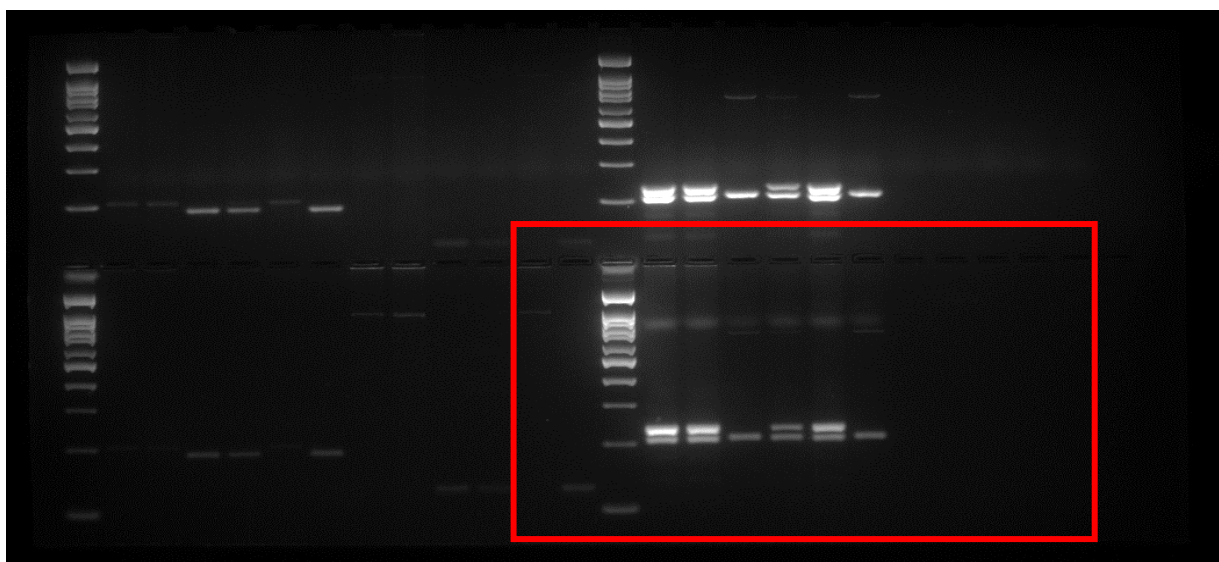


Figure 2 (b):

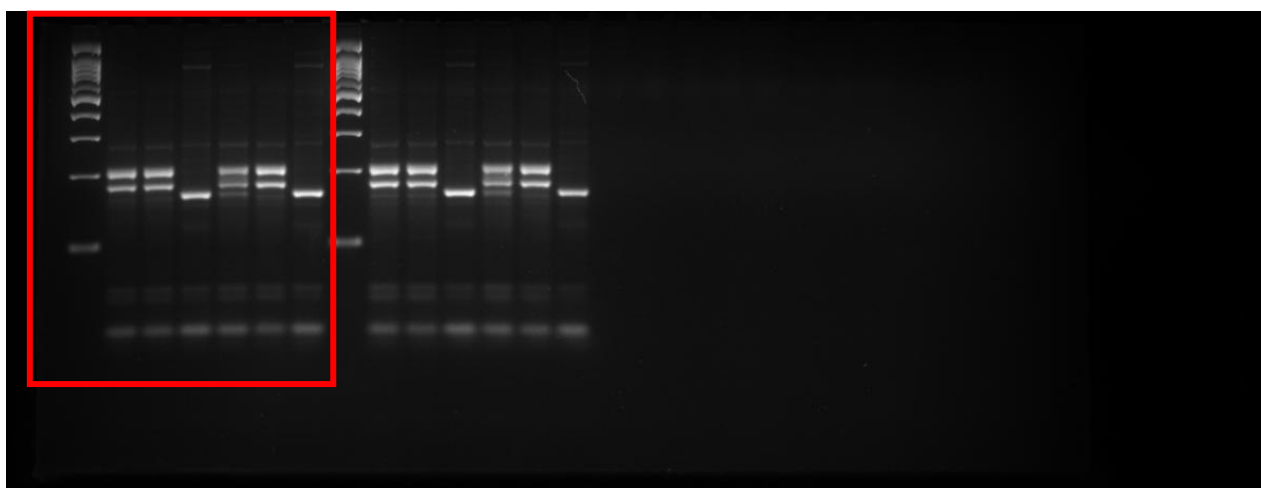


Figure 2 (c) and (d):

