



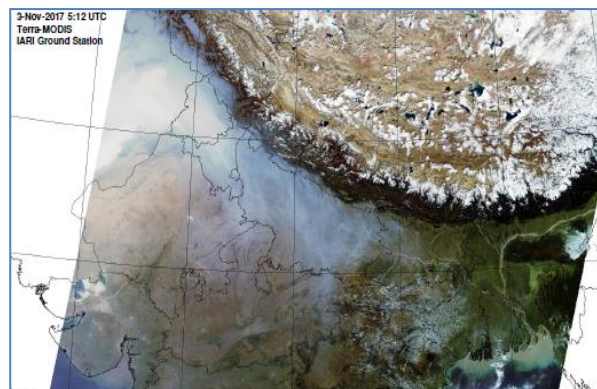
## Bulletin No. 40

Events Date:  
10-May-2023

Issued on:  
10-May-2023



# MONITORING WHEAT RESIDUE BURNING IN INDIA USING SATELLITE REMOTE SENSING DURING 2023



Prepared by:

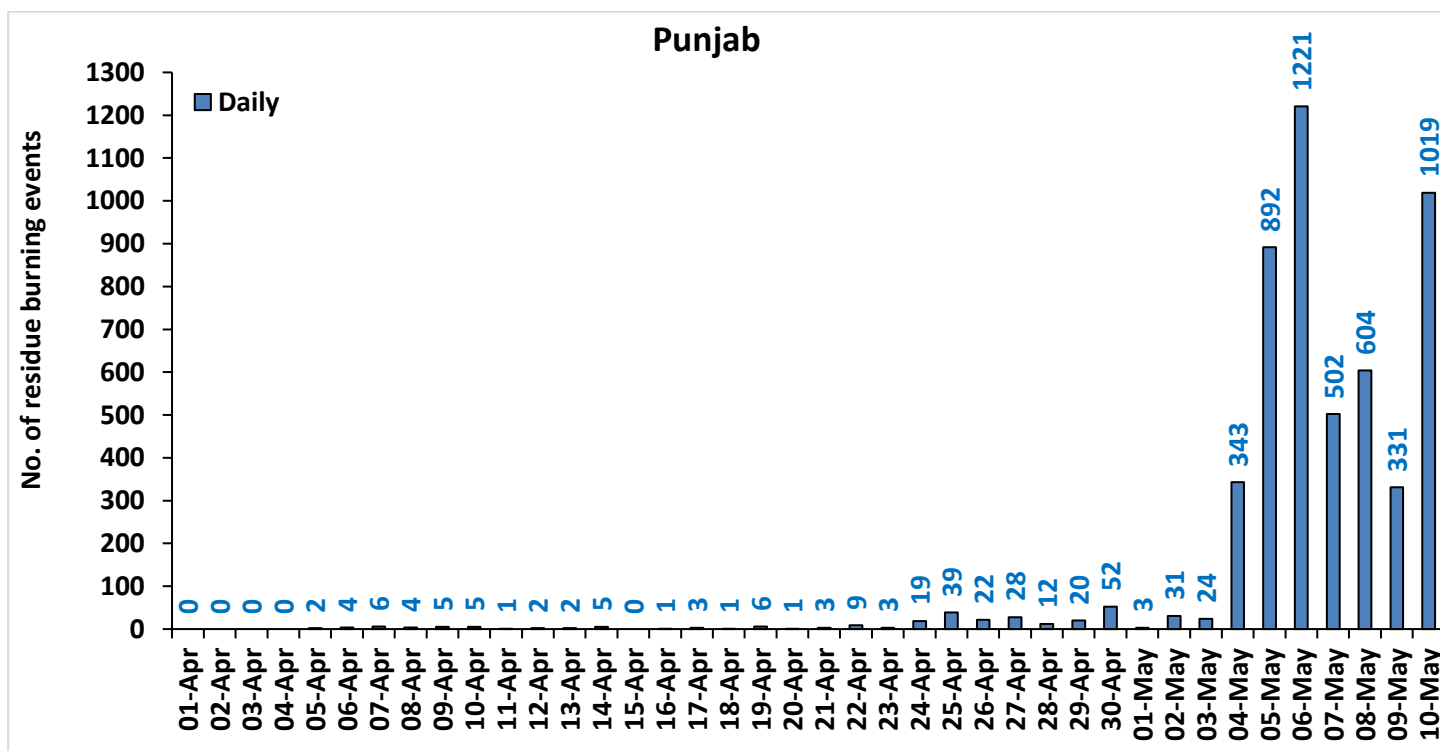
Consortium for Research on Agroecosystem Monitoring and Modeling from Space (CREAMS) Laboratory,  
Division of Agricultural Physics, ICAR – Indian Agricultural Research Institute, New Delhi – 110012

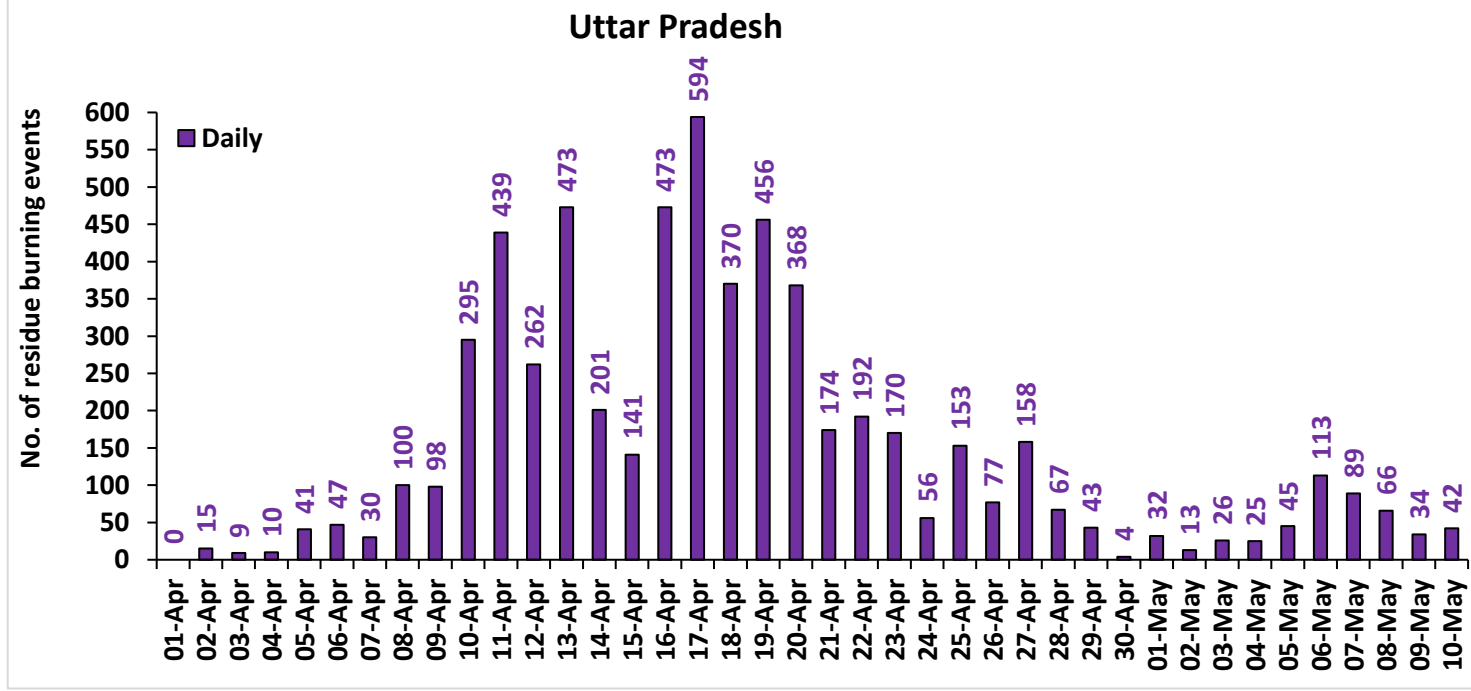
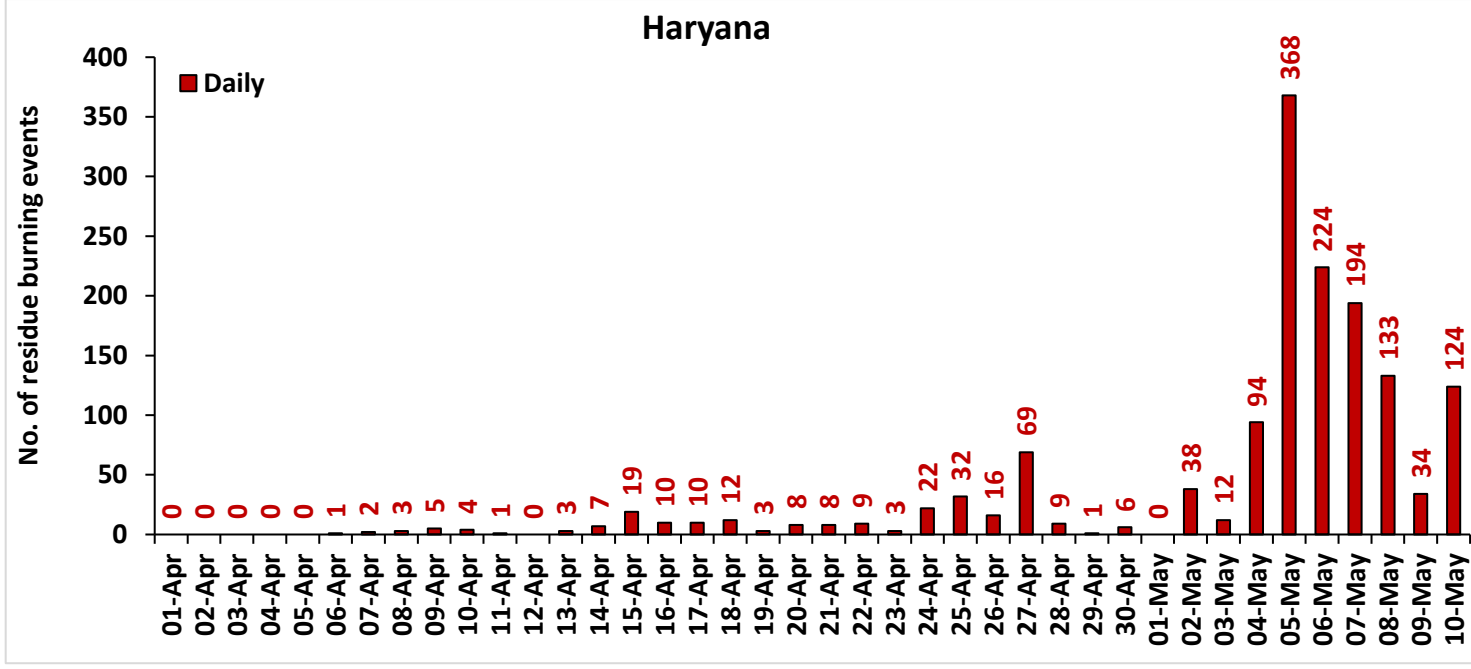
<http://creams.iari.res.in/cms2/>

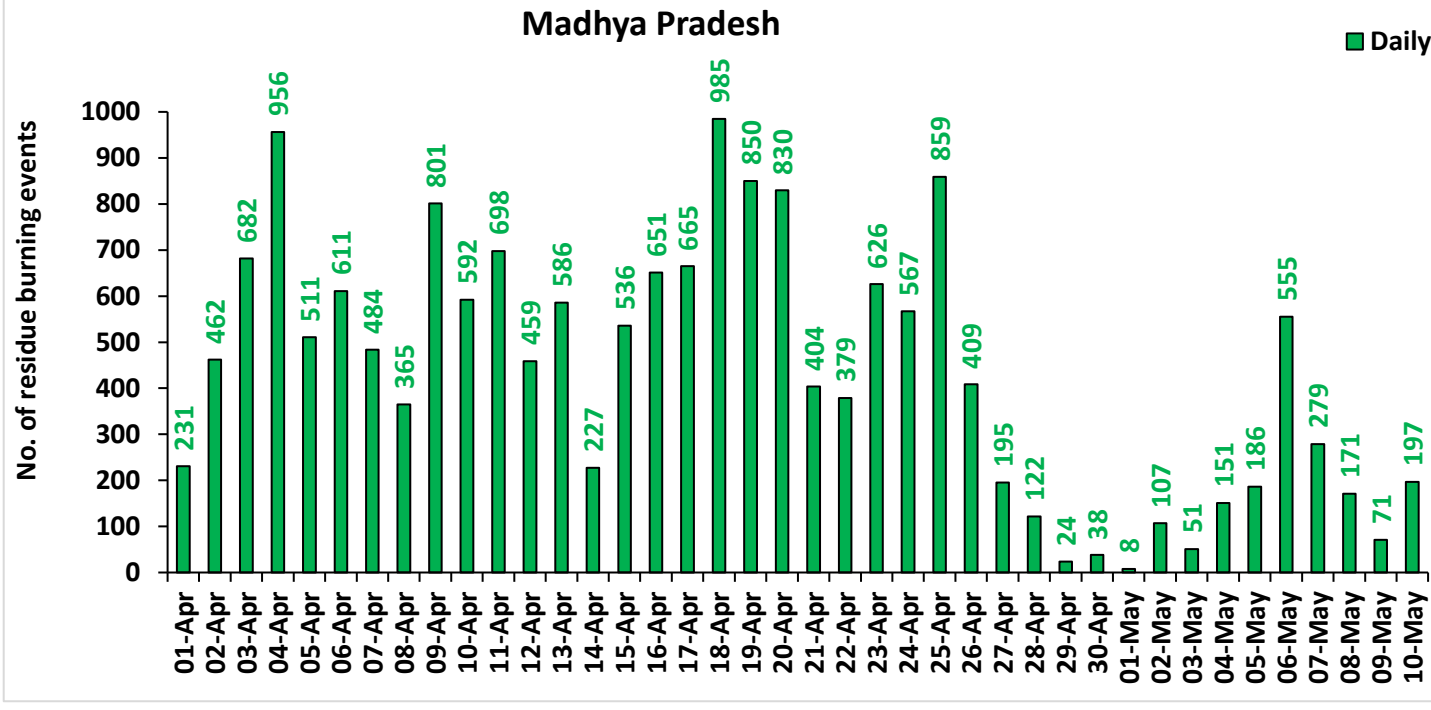
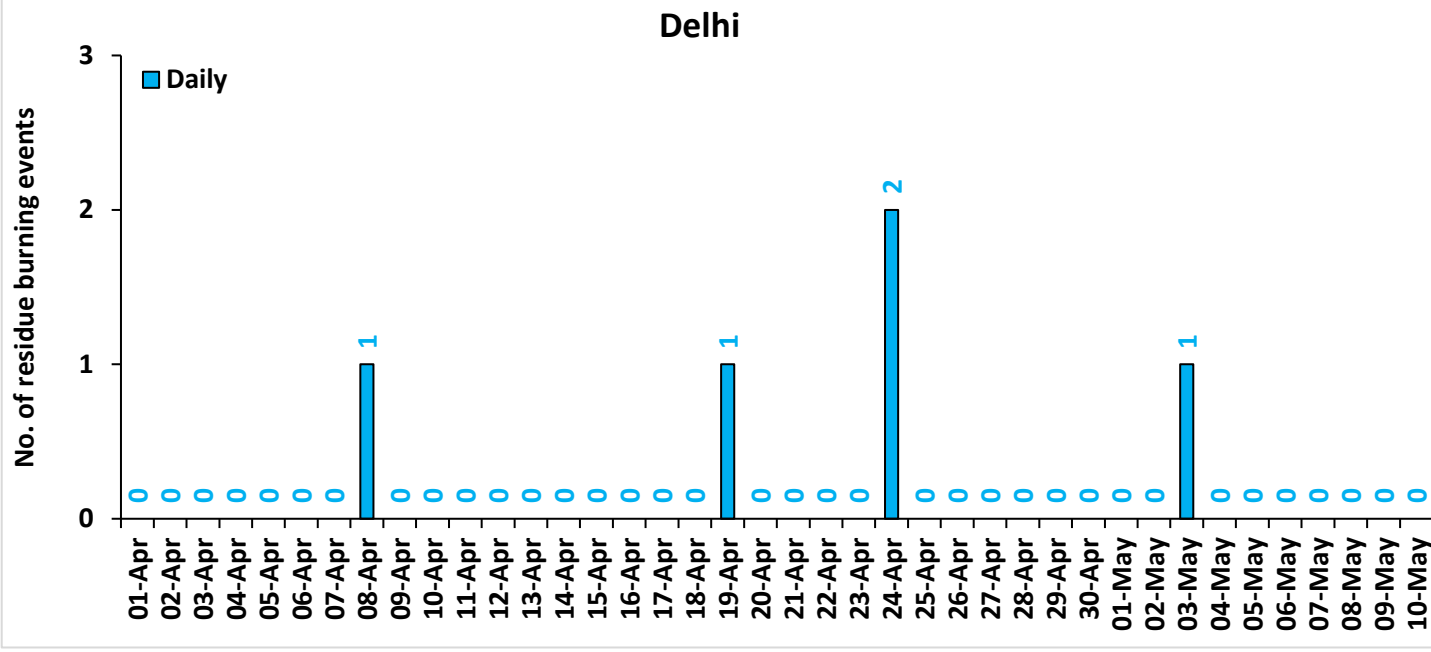
## Highlights for 10-May-2023

- The active fire events due to wheat residue burning were monitored using satellite remote sensing, following the new "Standard Protocol for Estimation of Crop Residue Burning Fire Events using Satellite Data".
- Satellites detected **1382** residue burning events in the five study States on 10-May-2023.
- The state wise events detected on 10-May-2023 were **1019** in Punjab, **124** in Haryana, **00** in Delhi, **42** in Uttar Pradesh and **197** in Madhya Pradesh.
- The number of events has increased from **470** on 09-May-2023 to **1382** on 10-May-2023 in the five study states.
- Total **30296** burning events were detected in the five states between 01-Apr-2023 and 10-May-2023, which are distributed as **5225**, **1484**, **6001**, **05**, and **17581** in Punjab, Haryana, UP, Delhi, and MP, respectively.

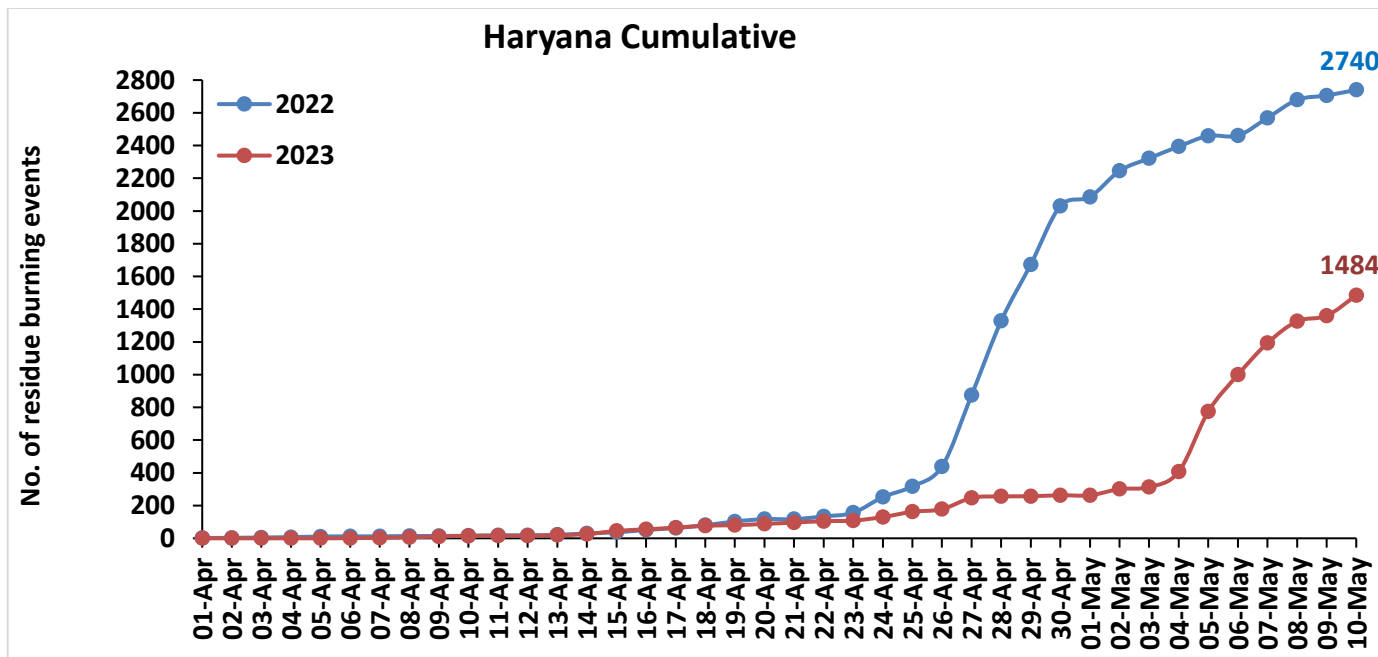
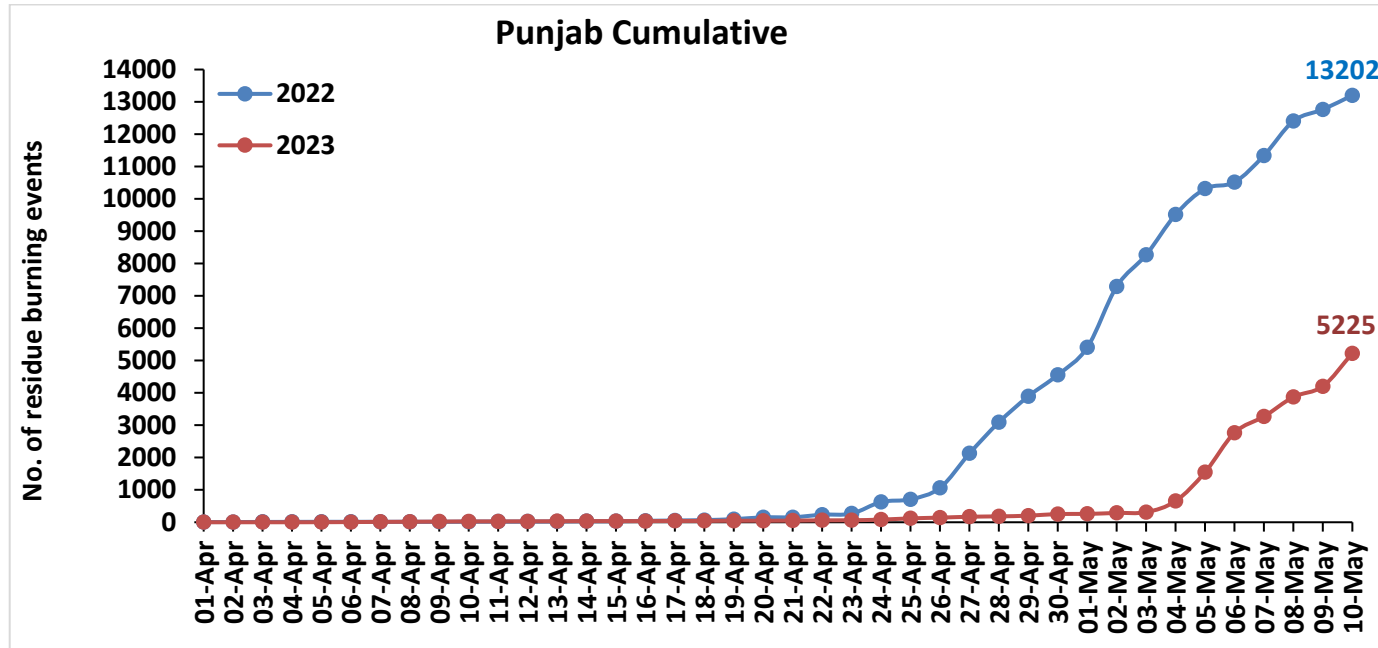
### Temporal distribution of wheat residue burning events for the study States in 2023



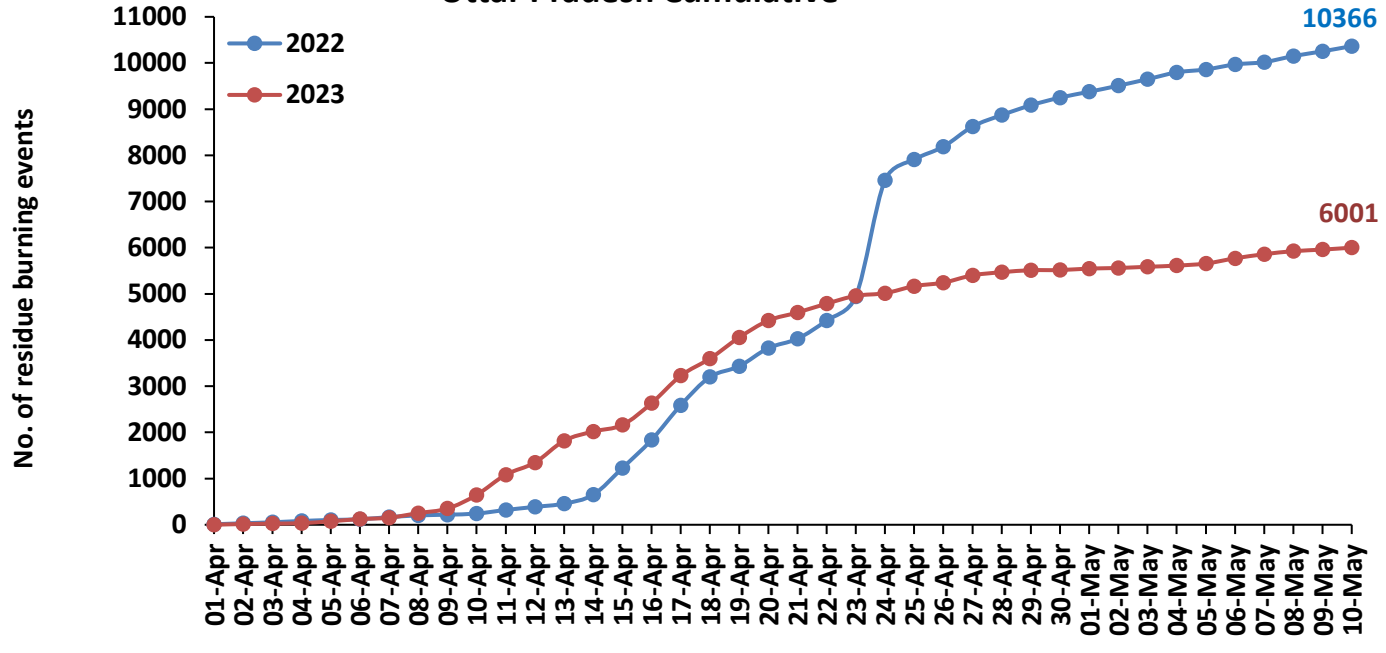




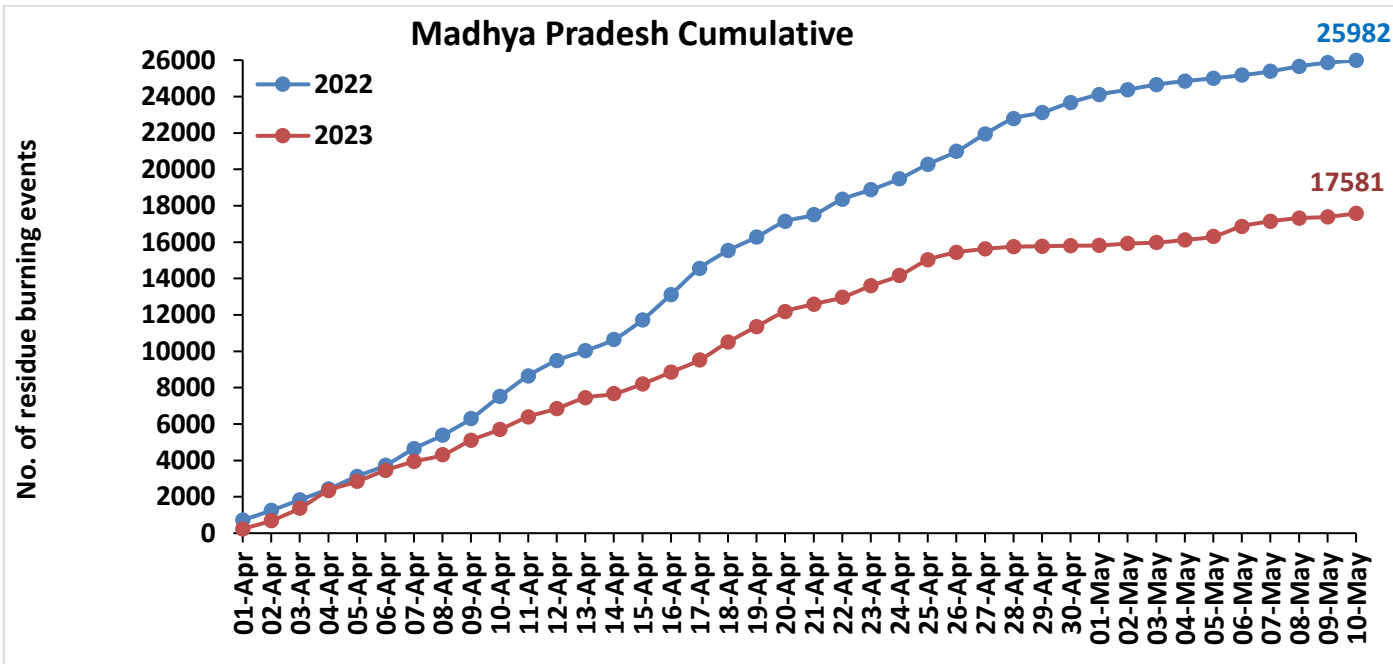
### Comparison of residue burning events in current year (2023) with previous year (2022) for the study States



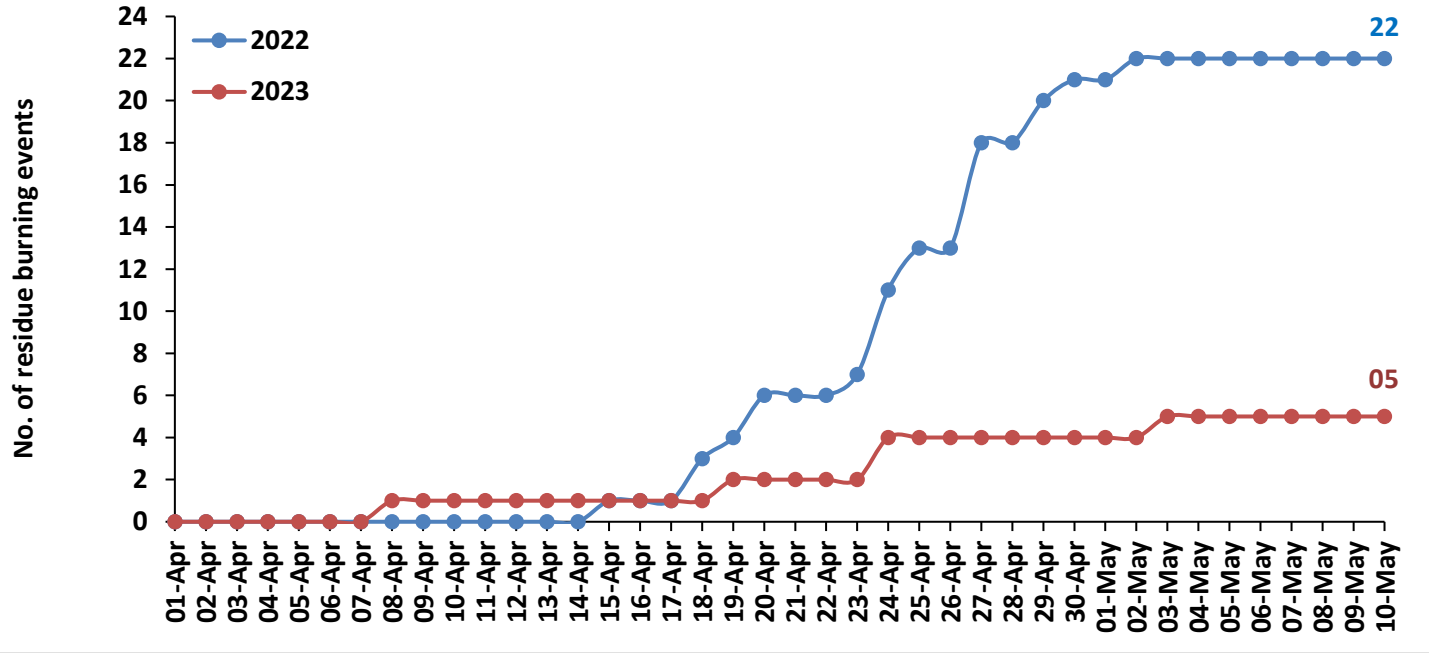
### Uttar Pradesh Cumulative



### Madhya Pradesh Cumulative



### Delhi Cumulative



**District-wise cumulative number of wheat residue burning events detected in 2022 and 2023**  
**(Period: 01 April-10 May)**

**(a) Punjab**

District	01 Apr-10 May	
	2022	2023
Amritsar	1179	251
Barnala	456	488
Bathinda	808	443
Faridkot	487	184
Fatehgarh Sahib	56	30
Fazilka	503	274
Firozpur	1381	371
Gurdaspur	1080	201
Hoshiarpur	446	213
Jalandhar	568	130
Kapurthala	611	120
Ludhiana	775	323
Mansa	405	310
Moga	1059	446
Muktsar	667	327
Pathankot	139	39
Patiala	403	268
Rupnagar	50	5
Sangrur	947	668
SAS NAGAR (Mohali)	24	6
SBS Nagar	127	26
Tarn Taran	1031	102
<b>Total</b>	<b>13202</b>	<b>5225</b>

**(b) Haryana**

District	01 Apr-10 May	
	2022	2023
AMBALA	86	51
BHIWANI	73	18
CHARKHI DADRI	9	5
FARIDABAD	13	10
FATEHABAD	264	251
GURGAON	6	9
HISAR	133	95
JHAJJAR	120	54
JIND	335	125
KAITHAL	273	152
KARNAL	370	174
KURUKSHETRA	132	39
MAHENDRAGARH	0	0
MEWAT	0	8
PALWAL	33	27
PANCHKULA	3	1
PANIPAT	209	77
REWARI	3	3
ROHTAK	210	64
SIRSA	180	214
SONIPAT	269	87
YAMUNANAGAR	19	20
<b>Total</b>	<b>2740</b>	<b>1484</b>



(c) Uttar Pradesh

District	01 Apr-10 May							
	2022	2023						
			GAUTAMBUDHNAGAR	27	24	MUZAFARNAGAR	52	31
			GAZIPUR	92	46	PILHIBHIT	302	54
AGRA	2	0	GHAZIABAD	13	7	PRATAPGARH	18	14
ALIGARH	19	31	GONDA	20	27	RAIBEARELI	88	14
ALLAHABAD	92	30	GORAKHPUR	958	365	RAMPUR	107	17
AMBEDKARNAGAR	11	11	HAMIRPUR	13	27	SANTKABIRNAGAR	681	430
AURAIYA	88	10	HARDOI	92	53	SANTRAVIDASNAGAR	1	2
AZAMGARH	85	70	JALAUN	17	9	SHAHJAHANPUR	307	65
BADAUN	6	4	JAUNPUR	19	6	SHARANPUR	31	14
BAGHPAT	6	3	JHANSI	96	109	SHRAWASTI	85	41
BAHRAICH	101	40	JYOTIBAPHULE NAGAR	8	4	SIDDHARTHANAGAR	2530	1846
BALLIA	133	201	KANNAUJ	0	1	SITAPUR	17	19
BALRAMPUR	235	95	KANPUR	8	2	SONBHADRA	113	22
BANDA	5	2	KANPUR DEHAT	24	9	SULTANPUR	59	25
BARABANKI	7	3	KAUSHAMBI	5	4	UNNAO	40	10
BAREILLY	103	17	KHERI	151	68	VARANASI	1	0
BASTI	423	222	KUSHINAGAR	216	94	<b>Total</b>	<b>10366</b>	<b>6001</b>
BIJNOR	47	23	LACKNOW	8	0			
BULANDSAHAR	8	9	LALITPUR	46	54			
CHANDAULI	286	56	MAHAMAYANAGAR	0	1			
CHITRAKOOT	22	3	MAHARAJGANJ	1489	977			
DEORIA	725	439	MAHOBA	2	40			
ETAH	1	2	MAINPURI	4	5			
ETAWAH	3	3	MATHURA	24	53			
FAIZABAD	3	9	MAU	75	59			
FARRUKHABAD	3	2	MEERUT	17	17			
FATEHPUR	30	23	MIRZAPUR	60	14			
FIROZABAD	1	0	MORADABAD	5	14			

(d) Madhya Pradesh

District	01 Apr-10 May				
	2022	2023			
			PANNA	139	61
ALIRAJPUR	0	0	RAISEN	2577	1628
ANUPPUR	33	1	RAJGARH	133	159
ASHOKNAGAR	625	225	RATLAM	187	287
BALAGHAT	27	1	REWA	106	28
BARWANI	4	7	SAGAR	719	528
BETUL	177	47	SATNA	712	136
BHIND	57	44	SEHORE	922	640
BHOPAL	936	471	SEONI	1521	719
BURHANPUR	11	2	SHAHDOL	99	8
CHHATARPUR	136	100	SHAJAPUR	359	532
CHHINDWARA	487	242	SHEOPUR	350	443
DAMOH	200	239	SHIVPURI	155	101
DATIA	357	269	SIDHI	20	1
DEWAS	557	560	SINGRAULI	106	3
DHAR	1004	873	TIKAMGARH	29	70
DINDORI	43	4	UJJAIN	1206	1748
EAST NIMAR	80	103	UMARIA	48	5
GUNA	697	375	VIDESHA	3683	1680
GWALIOR	519	360	WEST NIMAR	31	54
HARDA	374	270	<b>Total</b>	<b>25982</b>	<b>17581</b>
HOSHANGABAD	4061	2756			
INDORE	966	1008			
JABALPUR	864	444			
JHABUA	2	6			
KATNI	277	76			
MANDLA	172	28			
MANDSAUR	63	103			
MORENA	3	0			
NARSHIMAPURA	128	96			
NIMACH	20	40			

**(e) Delhi**

District	01 Apr-10 May	
	2022	2023
CENTRAL	0	0
EAST	0	0
NEW DELHI	0	0
NORTH	18	2
NORTH EAST	0	0
NORTH WEST DELHI	1	0
SHAHADRA	0	0
SOUTH	1	0
SOUTH EAST	0	0
SOUTH WEST DELHI	1	2
WEST DELHI	1	1
<b>Total</b>	<b>22</b>	<b>5</b>

**State-wise and date-wise number of wheat residue burning events detected in 2022 and 2023**  
**(Period: 01 April-10 May)**

Date	Punjab		Haryana		Uttar Pradesh		Delhi		Madhya Pradesh	
	2022	2023	2022	2023	2022	2023	2022	2023	2022	2023
01-Apr	6	0	2	0	10	0	0	0	715	231
02-Apr	1	0	1	0	22	15	0	0	531	462
03-Apr	3	0	2	0	21	9	0	0	589	682
04-Apr	2	0	2	0	29	10	0	0	589	956
05-Apr	2	2	4	0	21	41	0	0	698	511
06-Apr	0	4	1	1	16	47	0	0	612	611
07-Apr	0	6	0	2	46	30	0	0	908	484
08-Apr	1	4	2	3	37	100	0	1	749	365
09-Apr	0	5	0	5	16	98	0	0	907	801
10-Apr	4	5	2	4	24	295	0	0	1217	592
11-Apr	2	1	2	1	78	439	0	0	1129	698
12-Apr	0	2	0	0	67	262	0	0	847	459
13-Apr	3	2	3	3	70	473	0	0	537	586
14-Apr	7	5	9	7	193	201	0	0	618	227
15-Apr	1	0	7	19	579	141	1	0	1079	536
16-Apr	13	1	14	10	609	473	0	0	1390	651
17-Apr	10	3	12	10	751	594	0	0	1441	665
18-Apr	12	1	17	12	611	370	2	0	972	985
19-Apr	29	6	23	3	231	456	1	1	748	850
20-Apr	56	1	14	8	395	368	2	0	856	830
21-Apr	4	3	0	8	202	174	0	0	379	404
22-Apr	77	9	17	9	398	192	0	0	839	379
23-Apr	35	3	22	2	519	170	1	0	524	626
24-Apr	360	19	96	22	2515	56	4	2	605	567
25-Apr	82	39	65	32	450	153	2	0	796	859

<b>26-Apr</b>	354	22	122	16	277	77	0	0	706	409
<b>27-Apr</b>	1064	28	436	69	436	158	5	0	955	195
<b>28-Apr</b>	965	12	453	9	249	67	0	0	849	122
<b>29-Apr</b>	802	20	345	1	213	43	2	0	340	24
<b>30-Apr</b>	662	52	357	6	166	4	1	0	547	38
<b>01-May</b>	848	3	56	0	126	32	0	0	437	8
<b>02-May</b>	1887	31	159	38	132	13	1	0	265	107
<b>03-May</b>	979	24	77	12	141	26	0	1	283	51
<b>04-May</b>	1247	343	72	94	147	25	0	0	188	151
<b>05-May</b>	796	892	65	368	64	45	0	0	159	186
<b>06-May</b>	202	1221	2	224	107	113	0	0	166	555
<b>07-May</b>	827	502	108	194	52	89	0	0	215	279
<b>08-May</b>	1065	604	110	133	130	66	0	0	275	171
<b>09-May</b>	357	331	27	34	103	34	0	0	199	71
<b>10-May</b>	437	1019	34	124	113	42	0	0	123	197
<b>Total</b>	<b>13202</b>	<b>5225</b>	<b>2740</b>	<b>1484</b>	<b>10366</b>	<b>6001</b>	<b>22</b>	<b>5</b>	<b>25982</b>	<b>17581</b>

### Details of residue burning events in Punjab on 10-May-2023

S. No.	District	Tehsil / Block	Satellite	Latitude	Longitude	ACQ_TIME	Day / Night	Fire Power (W/m <sup>2</sup> )
1	AMRITSAR	AJNALA	S-NPP	31.82174	74.89513	12:59:07	D	9.30
2	AMRITSAR	AJNALA	S-NPP	31.82504	74.88830	12:59:07	D	13.60
3	AMRITSAR	AJNALA	S-NPP	31.82626	74.89376	12:59:07	D	18.80
4	AMRITSAR	AJNALA	S-NPP	31.84508	74.78250	12:59:07	D	6.50
5	AMRITSAR	AJNALA	S-NPP	31.86598	74.89919	12:59:07	D	3.60
6	AMRITSAR	AJNALA	S-NPP	31.87315	74.80662	12:59:07	D	3.00
7	AMRITSAR	AJNALA	S-NPP	31.87384	74.80323	12:59:07	D	2.60
8	AMRITSAR	AJNALA	S-NPP	31.87527	74.91960	12:59:07	D	6.40
9	AMRITSAR	AJNALA	S-NPP	31.87858	74.91280	12:59:07	D	13.20
10	AMRITSAR	AJNALA	S-NPP	31.87977	74.91824	12:59:07	D	13.20
11	AMRITSAR	AJNALA	S-NPP	31.88713	74.76115	12:59:07	D	6.20
12	AMRITSAR	AJNALA	S-NPP	31.89167	74.75978	12:59:07	D	6.20
13	AMRITSAR	AJNALA	S-NPP	31.90688	74.84911	12:59:07	D	9.30
14	AMRITSAR	AJNALA	S-NPP	31.91140	74.84775	12:59:07	D	9.30
15	AMRITSAR	ATTARI	S-NPP	31.54444	74.84975	12:59:07	D	6.90
16	AMRITSAR	ATTARI	S-NPP	31.55986	74.83820	12:59:07	D	7.70
17	AMRITSAR	ATTARI	S-NPP	31.56145	74.83871	12:59:07	D	4.60
18	AMRITSAR	ATTARI	S-NPP	31.57207	74.69703	12:59:07	D	4.50
19	AMRITSAR	ATTARI	S-NPP	31.57334	74.70269	12:59:07	D	4.90
20	AMRITSAR	ATTARI	S-NPP	31.57381	74.72665	12:59:07	D	7.80
21	AMRITSAR	ATTARI	S-NPP	31.57507	74.73228	12:59:07	D	7.80
22	AMRITSAR	ATTARI	S-NPP	31.57808	74.89276	12:59:07	D	4.40
23	AMRITSAR	ATTARI	S-NPP	31.58139	74.89072	12:59:07	D	7.20
24	AMRITSAR	ATTARI	S-NPP	31.61131	74.69724	12:59:07	D	7.00
25	AMRITSAR	ATTARI	S-NPP	31.65120	74.56107	12:59:07	D	9.20
26	AMRITSAR	CHOGAWAN	S-NPP	31.62048	74.69445	12:59:07	D	14.90
27	AMRITSAR	CHOGAWAN	S-NPP	31.62170	74.69141	12:59:07	D	13.70
28	AMRITSAR	CHOGAWAN	S-NPP	31.62551	74.65060	12:59:07	D	21.30
29	AMRITSAR	CHOGAWAN	S-NPP	31.62574	74.66605	12:59:07	D	7.00

30	AMRITSAR	CHOGAWAN	S-NPP	31.62776	74.65335	12:59:07	D	18.00
31	AMRITSAR	CHOGAWAN	S-NPP	31.62801	74.66194	12:59:07	D	8.00
32	AMRITSAR	CHOGAWAN	S-NPP	31.62926	74.66762	12:59:07	D	8.00
33	AMRITSAR	CHOGAWAN	S-NPP	31.63033	74.66467	12:59:07	D	7.00
34	AMRITSAR	CHOGAWAN	S-NPP	31.63546	74.68726	12:59:07	D	8.20
35	AMRITSAR	CHOGAWAN	S-NPP	31.68260	74.67906	12:59:07	D	29.10
36	AMRITSAR	CHOGAWAN	S-NPP	31.69464	74.64522	12:59:07	D	6.20
37	AMRITSAR	CHOGAWAN	S-NPP	31.69842	74.66220	12:59:07	D	4.50
38	AMRITSAR	CHOGAWAN	S-NPP	31.70055	74.71568	12:59:07	D	8.70
39	AMRITSAR	CHOGAWAN	S-NPP	31.71968	74.69187	12:59:07	D	7.70
40	AMRITSAR	CHOGAWAN	S-NPP	31.72593	74.58712	12:59:07	D	5.70
41	AMRITSAR	CHOGAWAN	S-NPP	31.72744	74.58446	12:59:07	D	5.60
42	AMRITSAR	CHOGAWAN	S-NPP	31.73205	74.58305	12:59:07	D	5.60
43	AMRITSAR	CHOGAWAN	S-NPP	31.74012	74.53169	12:59:07	D	6.90
44	AMRITSAR	CHOGAWAN	S-NPP	31.74142	74.53742	12:59:07	D	9.40
45	AMRITSAR	CHOGAWAN	S-NPP	31.75104	74.71000	12:59:07	D	8.20
46	AMRITSAR	CHOGAWAN	S-NPP	31.77447	74.61866	12:59:07	D	6.80
47	AMRITSAR	CHOGAWAN	S-NPP	31.77876	74.65958	12:59:07	D	4.00
48	AMRITSAR	CHOGAWAN	S-NPP	31.78540	74.64552	12:59:07	D	11.90
49	AMRITSAR	CHOGAWAN	S-NPP	31.81578	74.60606	12:59:07	D	6.20
50	AMRITSAR	CHOGAWAN	S-NPP	31.81704	74.61174	12:59:07	D	8.10
51	AMRITSAR	HARSHA CHHINA	S-NPP	31.70097	74.73946	12:59:07	D	11.90
52	AMRITSAR	HARSHA CHHINA	S-NPP	31.71468	74.73531	12:59:07	D	2.90
53	AMRITSAR	HARSHA CHHINA	S-NPP	31.71676	74.72273	12:59:07	D	4.70
54	AMRITSAR	HARSHA CHHINA	S-NPP	31.71800	74.72834	12:59:07	D	4.70
55	AMRITSAR	HARSHA CHHINA	S-NPP	31.71925	74.73394	12:59:07	D	7.30
56	AMRITSAR	HARSHA CHHINA	S-NPP	31.72962	74.73678	12:59:07	D	7.90
57	AMRITSAR	HARSHA CHHINA	S-NPP	31.74681	74.81465	12:59:07	D	25.00
58	AMRITSAR	HARSHA CHHINA	S-NPP	31.74774	74.71698	12:59:07	D	5.50
59	AMRITSAR	HARSHA CHHINA	S-NPP	31.74874	74.71300	12:59:07	D	11.40
60	AMRITSAR	HARSHA CHHINA	S-NPP	31.75135	74.81328	12:59:07	D	25.00
61	AMRITSAR	HARSHA CHHINA	S-NPP	31.76467	74.87389	12:59:07	D	4.70
62	AMRITSAR	HARSHA CHHINA	S-NPP	31.77080	74.84031	12:59:07	D	4.20

63	AMRITSAR	HARSHA CHHINA	S-NPP	31.78091	74.90401	12:59:07	D	8.30
64	AMRITSAR	HARSHA CHHINA	S-NPP	31.78109	74.90733	12:59:07	D	9.90
65	AMRITSAR	HARSHA CHHINA	S-NPP	31.78769	74.82935	12:59:07	D	9.20
66	AMRITSAR	HARSHA CHHINA	S-NPP	31.79223	74.82799	12:59:07	D	5.70
67	AMRITSAR	HARSHA CHHINA	S-NPP	31.79346	74.83350	12:59:07	D	6.50
68	AMRITSAR	HARSHA CHHINA	S-NPP	31.80941	74.90464	12:59:07	D	8.60
69	AMRITSAR	JANDIALA GURU	S-NPP	31.54598	74.96680	12:59:07	D	3.80
70	AMRITSAR	JANDIALA GURU	S-NPP	31.55371	75.04565	12:59:07	D	4.80
71	AMRITSAR	JANDIALA GURU	S-NPP	31.55489	75.05104	12:59:07	D	4.80
72	AMRITSAR	JANDIALA GURU	S-NPP	31.59454	74.92778	12:59:07	D	7.00
73	AMRITSAR	JANDIALA GURU	S-NPP	31.67710	74.99606	12:59:07	D	7.40
74	AMRITSAR	MAJITHA	AQUA	31.75500	74.92600	13:12:04	D	43.90
75	AMRITSAR	MAJITHA	S-NPP	31.70601	74.97874	12:59:07	D	7.10
76	AMRITSAR	MAJITHA	S-NPP	31.70746	74.98114	12:59:07	D	7.60
77	AMRITSAR	MAJITHA	S-NPP	31.71986	74.99769	12:59:07	D	7.90
78	AMRITSAR	MAJITHA	S-NPP	31.75216	75.05684	12:59:07	D	7.10
79	AMRITSAR	MAJITHA	S-NPP	31.75500	74.91766	12:59:07	D	9.60
80	AMRITSAR	MAJITHA	S-NPP	31.75664	75.05550	12:59:07	D	7.10
81	AMRITSAR	MAJITHA	S-NPP	31.75850	75.02062	12:59:07	D	10.00
82	AMRITSAR	MAJITHA	S-NPP	31.75952	74.91630	12:59:07	D	30.70
83	AMRITSAR	MAJITHA	S-NPP	31.76300	75.01928	12:59:07	D	8.20
84	AMRITSAR	MAJITHA	S-NPP	31.76349	75.06488	12:59:07	D	6.80
85	AMRITSAR	MAJITHA	S-NPP	31.76724	74.99502	12:59:07	D	1.40
86	AMRITSAR	MAJITHA	S-NPP	31.78404	74.98421	12:59:07	D	8.70
87	AMRITSAR	MAJITHA	S-NPP	31.80009	75.01388	12:59:07	D	7.40
88	AMRITSAR	MAJITHA	S-NPP	31.81082	74.95304	12:59:07	D	11.00
89	AMRITSAR	MAJITHA	S-NPP	31.81133	74.95618	12:59:07	D	12.00
90	AMRITSAR	MAJITHA	S-NPP	31.81462	74.94942	12:59:07	D	9.60
91	AMRITSAR	RAYYA	S-NPP	31.50689	75.26715	12:59:07	D	6.70
92	AMRITSAR	RAYYA	S-NPP	31.51211	75.20365	12:59:07	D	4.00
93	AMRITSAR	RAYYA	S-NPP	31.54853	75.19551	12:59:07	D	12.60
94	AMRITSAR	RAYYA	S-NPP	31.54970	75.20081	12:59:07	D	12.60
95	AMRITSAR	RAYYA	S-NPP	31.55300	75.19419	12:59:07	D	9.80



96	AMRITSAR	RAYYA	S-NPP	31.55375	75.28684	12:59:07	D	8.00
97	AMRITSAR	RAYYA	S-NPP	31.55417	75.19949	12:59:07	D	9.80
98	AMRITSAR	RAYYA	S-NPP	31.58739	75.30730	12:59:07	D	11.50
99	AMRITSAR	RAYYA	S-NPP	31.58879	75.35670	12:59:07	D	4.90
100	AMRITSAR	RAYYA	S-NPP	31.59138	75.23912	12:59:07	D	11.20
101	AMRITSAR	RAYYA	S-NPP	31.64981	75.30408	12:59:07	D	6.80
102	AMRITSAR	RAYYA	S-NPP	31.66168	75.27975	12:59:07	D	5.50
103	AMRITSAR	RAYYA	S-NPP	31.66292	75.27799	12:59:07	D	4.70
104	AMRITSAR	TARSIKKA	S-NPP	31.57495	75.14236	12:59:07	D	12.90
105	AMRITSAR	TARSIKKA	S-NPP	31.58974	75.16634	12:59:07	D	3.10
106	AMRITSAR	TARSIKKA	S-NPP	31.59553	75.19289	12:59:07	D	7.10
107	AMRITSAR	TARSIKKA	S-NPP	31.59717	75.11295	12:59:07	D	6.20
108	AMRITSAR	TARSIKKA	S-NPP	31.60282	75.11698	12:59:07	D	5.70
109	AMRITSAR	TARSIKKA	S-NPP	31.63239	75.18758	12:59:07	D	2.70
110	AMRITSAR	TARSIKKA	S-NPP	31.63303	75.18606	12:59:07	D	3.40
111	AMRITSAR	TARSIKKA	S-NPP	31.64587	75.20609	12:59:07	D	2.40
112	AMRITSAR	TARSIKKA	S-NPP	31.65322	75.08361	12:59:07	D	7.20
113	AMRITSAR	TARSIKKA	S-NPP	31.66432	75.06887	12:59:07	D	16.10
114	AMRITSAR	TARSIKKA	S-NPP	31.70011	75.18868	12:59:07	D	11.10
115	AMRITSAR	VERKA	S-NPP	31.60214	74.76599	12:59:07	D	11.70
116	AMRITSAR	VERKA	S-NPP	31.65999	74.81714	12:59:07	D	11.40
117	AMRITSAR	VERKA	S-NPP	31.66204	74.80470	12:59:07	D	3.90
118	AMRITSAR	VERKA	S-NPP	31.66464	74.80664	12:59:07	D	6.10
119	AMRITSAR	VERKA	S-NPP	31.67473	74.98520	12:59:07	D	13.80
120	AMRITSAR	VERKA	S-NPP	31.67591	74.99063	12:59:07	D	7.40
121	AMRITSAR	VERKA	S-NPP	31.67898	74.96073	12:59:07	D	3.20
122	AMRITSAR	VERKA	S-NPP	31.68883	74.96651	12:59:07	D	10.00
123	AMRITSAR	VERKA	S-NPP	31.69749	74.94070	12:59:07	D	5.40
124	BARNALA	BARNALA	AQUA	30.40400	75.56600	13:12:04	D	60.00
125	BARNALA	BARNALA	S-NPP	30.24232	75.40672	12:59:07	D	14.50
126	BARNALA	BARNALA	S-NPP	30.24419	75.40760	12:59:07	D	15.40
127	BARNALA	BARNALA	S-NPP	30.25746	75.55809	12:59:07	D	6.70
128	BARNALA	BARNALA	S-NPP	30.30008	75.64540	12:59:07	D	6.20

129	BARNALA	BARNALA	S-NPP	30.33312	75.53493	12:59:07	D	5.90
130	BARNALA	BARNALA	S-NPP	30.38396	75.59349	12:59:07	D	6.80
131	BARNALA	BARNALA	S-NPP	30.41490	75.51449	12:59:07	D	6.60
132	BARNALA	BARNALA	S-NPP	30.41940	75.51321	12:59:07	D	6.60
133	BARNALA	BARNALA	S-NPP	30.44318	75.53458	12:59:07	D	17.80
134	BARNALA	MAHAL KALAN	AQUA	30.41400	75.55500	13:12:04	D	70.10
135	BARNALA	MAHAL KALAN	AQUA	30.57900	75.45500	13:12:04	D	43.40
136	BARNALA	MAHAL KALAN	S-NPP	30.53897	75.51540	12:59:07	D	4.60
137	BARNALA	MAHAL KALAN	S-NPP	30.55734	75.59962	12:59:07	D	4.10
138	BARNALA	MAHAL KALAN	S-NPP	30.56809	75.49576	12:59:07	D	7.80
139	BARNALA	MAHAL KALAN	S-NPP	30.57092	75.66209	12:59:07	D	8.90
140	BARNALA	SEHNA	S-NPP	30.28083	75.38413	12:59:07	D	15.20
141	BARNALA	SEHNA	S-NPP	30.37566	75.46589	12:59:07	D	8.10
142	BARNALA	SEHNA	S-NPP	30.44919	75.40786	12:59:07	D	8.20
143	BARNALA	SEHNA	S-NPP	30.49089	75.31816	12:59:07	D	13.10
144	BARNALA	SEHNA	S-NPP	30.51501	75.34008	12:59:07	D	10.70
145	BATHINDA	BATHINDA	S-NPP	30.17789	74.74257	12:59:07	D	12.40
146	BATHINDA	BATHINDA	S-NPP	30.20001	74.88659	12:59:07	D	14.50
147	BATHINDA	BATHINDA	S-NPP	30.22906	74.74642	12:59:07	D	3.30
148	BATHINDA	BATHINDA	S-NPP	30.23037	74.75237	12:59:07	D	7.70
149	BATHINDA	BHAGTA BHAI KA	S-NPP	30.39639	75.05309	12:59:07	D	10.20
150	BATHINDA	BHAGTA BHAI KA	S-NPP	30.42435	75.14999	12:59:07	D	14.70
151	BATHINDA	BHAGTA BHAI KA	S-NPP	30.42774	75.07748	12:59:07	D	3.90
152	BATHINDA	BHAGTA BHAI KA	S-NPP	30.43236	75.07613	12:59:07	D	3.90
153	BATHINDA	BHAGTA BHAI KA	S-NPP	30.43404	75.03960	12:59:07	D	13.40
154	BATHINDA	BHAGTA BHAI KA	S-NPP	30.43530	75.04524	12:59:07	D	7.70
155	BATHINDA	BHAGTA BHAI KA	S-NPP	30.45315	75.14757	12:59:07	D	19.80
156	BATHINDA	BHAGTA BHAI KA	S-NPP	30.45773	75.14622	12:59:07	D	19.80
157	BATHINDA	BHAGTA BHAI KA	S-NPP	30.46232	75.14487	12:59:07	D	8.10
158	BATHINDA	BHAGTA BHAI KA	S-NPP	30.46938	75.15468	12:59:07	D	12.60
159	BATHINDA	GONIANA MANDI	S-NPP	30.28819	74.87720	12:59:07	D	10.10
160	BATHINDA	GONIANA MANDI	S-NPP	30.28842	74.83366	12:59:07	D	10.20
161	BATHINDA	GONIANA MANDI	S-NPP	30.29310	74.83228	12:59:07	D	10.70

162	BATHINDA	GONIANA MANDI	S-NPP	30.29624	74.86864	12:59:07	D	9.70
163	BATHINDA	GONIANA MANDI	S-NPP	30.31094	74.95670	12:59:07	D	10.90
164	BATHINDA	GONIANA MANDI	S-NPP	30.31395	74.81366	12:59:07	D	5.90
165	BATHINDA	GONIANA MANDI	S-NPP	30.32443	74.79574	12:59:07	D	5.30
166	BATHINDA	GONIANA MANDI	S-NPP	30.33115	74.78127	12:59:07	D	6.90
167	BATHINDA	GONIANA MANDI	S-NPP	30.33222	74.78323	12:59:07	D	5.80
168	BATHINDA	GONIANA MANDI	S-NPP	30.33516	74.79883	12:59:07	D	6.70
169	BATHINDA	GONIANA MANDI	S-NPP	30.33905	74.85983	12:59:07	D	3.40
170	BATHINDA	GONIANA MANDI	S-NPP	30.33964	74.86206	12:59:07	D	5.90
171	BATHINDA	GONIANA MANDI	S-NPP	30.35351	74.92336	12:59:07	D	6.80
172	BATHINDA	GONIANA MANDI	S-NPP	30.36205	75.00876	12:59:07	D	4.80
173	BATHINDA	GONIANA MANDI	S-NPP	30.36466	74.95318	12:59:07	D	9.10
174	BATHINDA	GONIANA MANDI	S-NPP	30.36468	74.95071	12:59:07	D	7.30
175	BATHINDA	GONIANA MANDI	S-NPP	30.37139	74.93654	12:59:07	D	7.70
176	BATHINDA	GONIANA MANDI	S-NPP	30.37144	74.93894	12:59:07	D	5.40
177	BATHINDA	GONIANA MANDI	S-NPP	30.37626	74.89212	12:59:07	D	4.50
178	BATHINDA	MAUR	S-NPP	30.10594	75.20949	12:59:07	D	6.80
179	BATHINDA	NATHANA	S-NPP	30.22608	75.15904	12:59:07	D	11.50
180	BATHINDA	NATHANA	S-NPP	30.26029	75.04681	12:59:07	D	12.60
181	BATHINDA	NATHANA	S-NPP	30.27275	75.10355	12:59:07	D	9.50
182	BATHINDA	NATHANA	S-NPP	30.30050	75.02071	12:59:07	D	4.80
183	BATHINDA	NATHANA	S-NPP	30.32496	75.08602	12:59:07	D	2.30
184	BATHINDA	NATHANA	S-NPP	30.33506	75.06503	12:59:07	D	17.40
185	BATHINDA	NATHANA	S-NPP	30.33624	75.13663	12:59:07	D	4.20
186	BATHINDA	NATHANA	S-NPP	30.40407	75.11085	12:59:07	D	6.80
187	BATHINDA	PHUL	S-NPP	30.29687	75.28055	12:59:07	D	4.30
188	BATHINDA	PHUL	S-NPP	30.32117	75.13506	12:59:07	D	4.40
189	BATHINDA	PHUL	S-NPP	30.35323	75.19111	12:59:07	D	9.40
190	BATHINDA	PHUL	S-NPP	30.35446	75.19666	12:59:07	D	10.20
191	BATHINDA	PHUL	S-NPP	30.35455	75.28482	12:59:07	D	10.10
192	BATHINDA	PHUL	S-NPP	30.35576	75.29030	12:59:07	D	11.50
193	BATHINDA	PHUL	S-NPP	30.43844	75.20171	12:59:07	D	3.60
194	BATHINDA	RAMPURA	S-NPP	30.22773	75.34137	12:59:07	D	4.70

195	BATHINDA	SANGAT	S-NPP	30.08308	74.69482	12:59:07	D	10.40
196	BATHINDA	SANGAT	S-NPP	30.08589	74.69324	12:59:07	D	12.60
197	BATHINDA	TALWANDI SABO	AQUA	29.91400	74.94700	02:19:31	N	45.20
198	BATHINDA	TALWANDI SABO	S-NPP	29.93356	75.12362	12:59:07	D	18.00
199	BATHINDA	TALWANDI SABO	S-NPP	29.96394	75.12693	12:59:07	D	12.50
200	BATHINDA	TALWANDI SABO	S-NPP	29.96528	75.13000	12:59:07	D	8.10
201	BATHINDA	TALWANDI SABO	S-NPP	29.98220	75.18806	12:59:07	D	5.80
202	BATHINDA	TALWANDI SABO	S-NPP	29.98267	75.18527	12:59:07	D	6.30
203	BATHINDA	TALWANDI SABO	S-NPP	30.01254	75.03100	12:59:07	D	8.30
204	BATHINDA	TALWANDI SABO	S-NPP	30.05058	74.93126	12:59:07	D	6.70
205	FARIDKOT	FARIDKOT	AQUA	30.67200	74.65900	13:12:04	D	62.40
206	FARIDKOT	FARIDKOT	S-NPP	30.61261	74.70150	12:59:07	D	8.80
207	FARIDKOT	FARIDKOT	S-NPP	30.63319	74.72665	12:59:07	D	9.40
208	FARIDKOT	FARIDKOT	S-NPP	30.63527	74.71352	12:59:07	D	5.70
209	FARIDKOT	FARIDKOT	S-NPP	30.64157	74.69703	12:59:07	D	8.40
210	FARIDKOT	FARIDKOT	S-NPP	30.64204	74.69898	12:59:07	D	9.40
211	FARIDKOT	FARIDKOT	S-NPP	30.65022	74.75681	12:59:07	D	10.00
212	FARIDKOT	FARIDKOT	S-NPP	30.67534	74.91722	12:59:07	D	13.70
213	FARIDKOT	FARIDKOT	S-NPP	30.67700	74.89625	12:59:07	D	6.30
214	FARIDKOT	FARIDKOT	S-NPP	30.68921	74.91309	12:59:07	D	7.10
215	FARIDKOT	FARIDKOT	S-NPP	30.70095	74.87099	12:59:07	D	6.30
216	FARIDKOT	FARIDKOT	S-NPP	30.70558	74.86961	12:59:07	D	6.30
217	FARIDKOT	FARIDKOT	S-NPP	30.72157	74.74179	12:59:07	D	13.30
218	FARIDKOT	FARIDKOT	S-NPP	30.72546	74.75922	12:59:07	D	11.00
219	FARIDKOT	FARIDKOT	S-NPP	30.72934	74.77660	12:59:07	D	6.10
220	FARIDKOT	FARIDKOT	S-NPP	30.76112	74.78564	12:59:07	D	2.90
221	FARIDKOT	FARIDKOT	S-NPP	30.77896	74.75327	12:59:07	D	10.80
222	FARIDKOT	FARIDKOT	S-NPP	30.77930	74.75552	12:59:07	D	12.00
223	FARIDKOT	FARIDKOT	S-NPP	30.79281	74.54878	12:59:07	D	9.20
224	FARIDKOT	FARIDKOT	S-NPP	30.79414	74.55472	12:59:07	D	9.20
225	FARIDKOT	JAITON	S-NPP	30.39362	74.88085	12:59:07	D	8.80
226	FARIDKOT	JAITON	S-NPP	30.39707	75.05036	12:59:07	D	4.90
227	FARIDKOT	JAITON	S-NPP	30.40237	74.96409	12:59:07	D	3.00

228	FARIDKOT	JAITON	S-NPP	30.40631	74.75909	12:59:07	D	6.80
229	FARIDKOT	JAITON	S-NPP	30.41674	74.80595	12:59:07	D	4.10
230	FARIDKOT	JAITON	S-NPP	30.41710	74.94146	12:59:07	D	4.20
231	FARIDKOT	JAITON	S-NPP	30.42586	74.75760	12:59:07	D	6.80
232	FARIDKOT	JAITON	S-NPP	30.42640	74.75939	12:59:07	D	7.90
233	FARIDKOT	JAITON	S-NPP	30.43013	74.88860	12:59:07	D	5.90
234	FARIDKOT	JAITON	S-NPP	30.43388	74.79269	12:59:07	D	8.30
235	FARIDKOT	JAITON	S-NPP	30.43419	74.79456	12:59:07	D	7.70
236	FARIDKOT	JAITON	S-NPP	30.45132	74.89465	12:59:07	D	4.50
237	FARIDKOT	JAITON	S-NPP	30.45259	74.90041	12:59:07	D	4.50
238	FARIDKOT	JAITON	S-NPP	30.47364	74.97355	12:59:07	D	6.80
239	FARIDKOT	JAITON	S-NPP	30.48145	74.75995	12:59:07	D	4.60
240	FARIDKOT	JAITON	S-NPP	30.49821	74.87881	12:59:07	D	7.30
241	FARIDKOT	JAITON	S-NPP	30.51218	74.87470	12:59:07	D	5.40
242	FARIDKOT	JAITON	S-NPP	30.53852	74.97061	12:59:07	D	7.50
243	FARIDKOT	KOT KAPURA	AQUA	30.56000	74.86500	13:12:04	D	52.70
244	FARIDKOT	KOT KAPURA	AQUA	30.56800	74.87000	13:12:04	D	76.90
245	FARIDKOT	KOT KAPURA	S-NPP	30.50434	74.72812	12:59:07	D	10.60
246	FARIDKOT	KOT KAPURA	S-NPP	30.50565	74.73399	12:59:07	D	15.50
247	FARIDKOT	KOT KAPURA	S-NPP	30.51870	74.79251	12:59:07	D	11.10
248	FARIDKOT	KOT KAPURA	S-NPP	30.52258	74.80996	12:59:07	D	13.80
249	FARIDKOT	KOT KAPURA	S-NPP	30.52546	74.77808	12:59:07	D	5.10
250	FARIDKOT	KOT KAPURA	S-NPP	30.57310	74.88124	12:59:07	D	6.70
251	FARIDKOT	KOT KAPURA	S-NPP	30.57318	74.88037	12:59:07	D	8.60
252	FARIDKOT	KOT KAPURA	S-NPP	30.58279	74.90284	12:59:07	D	9.70
253	FARIDKOT	KOT KAPURA	S-NPP	30.60648	74.85217	12:59:07	D	5.60
254	FARIDKOT	KOT KAPURA	S-NPP	30.60956	74.88796	12:59:07	D	14.20
255	FARIDKOT	KOT KAPURA	S-NPP	30.67620	74.89871	12:59:07	D	10.20
256	FARIDKOT	KOT KAPURA	S-NPP	30.67830	74.90195	12:59:07	D	5.70
257	FARIDKOT	KOT KAPURA	S-NPP	30.67996	74.91584	12:59:07	D	13.10
258	FATEHGARH SAHIB	AMLOH	S-NPP	30.60467	76.22300	12:59:07	D	5.70
259	FATEHGARH SAHIB	AMLOH	S-NPP	30.60924	76.28783	12:59:07	D	6.50
260	FATEHGARH SAHIB	BASSI PATHANAN	S-NPP	30.65219	76.34135	12:59:07	D	2.00

261	FATEHGARH SAHIB	KHAMANON	S-NPP	30.83072	76.32001	12:59:07	D	2.20
262	FATEHGARH SAHIB	KHAMANON	S-NPP	30.83370	76.33418	12:59:07	D	7.00
263	FATEHGARH SAHIB	KHAMANON	S-NPP	30.87300	76.32809	12:59:07	D	5.70
264	FATEHGARH SAHIB	KHERA	S-NPP	30.68089	76.56586	12:59:07	D	2.20
265	FATEHGARH SAHIB	SIRHIND	AQUA	30.55500	76.37400	13:12:04	D	40.60
266	FATEHGARH SAHIB	SIRHIND	S-NPP	30.54330	76.45467	12:59:07	D	10.80
267	FATEHGARH SAHIB	SIRHIND	S-NPP	30.54526	76.46407	12:59:07	D	8.00
268	FATEHGARH SAHIB	SIRHIND	S-NPP	30.54951	76.46288	12:59:07	D	8.00
269	FATEHGARH SAHIB	SIRHIND	S-NPP	30.56627	76.41346	12:59:07	D	7.60
270	FATEHGARH SAHIB	SIRHIND	S-NPP	30.57287	76.28786	12:59:07	D	6.30
271	FATEHGARH SAHIB	SIRHIND	S-NPP	30.61471	76.35683	12:59:07	D	5.10
272	FAZILKA	ABOHAR	S-NPP	29.97427	74.39298	12:59:07	D	7.70
273	FAZILKA	ABOHAR	S-NPP	30.01780	74.40258	14:39:24	D	8.70
274	FAZILKA	ABOHAR	S-NPP	30.01831	74.40263	14:39:24	D	6.00
275	FAZILKA	ABOHAR	S-NPP	30.13617	74.35094	12:59:07	D	7.90
276	FAZILKA	ABOHAR	S-NPP	30.13706	74.22756	14:39:24	D	8.60
277	FAZILKA	ABOHAR	S-NPP	30.18137	74.20061	12:59:07	D	11.40
278	FAZILKA	ABOHAR	S-NPP	30.19977	74.23593	12:59:07	D	6.50
279	FAZILKA	ABOHAR	S-NPP	30.20120	74.24229	12:59:07	D	9.00
280	FAZILKA	ABOHAR	S-NPP	30.20138	74.24041	12:59:07	D	12.90
281	FAZILKA	ARNIWALA SHEIKH SUBANPUR	S-NPP	30.32619	74.19604	12:59:07	D	3.10
282	FAZILKA	ARNIWALA SHEIKH SUBANPUR	S-NPP	30.38754	74.14200	12:59:07	D	5.30
283	FAZILKA	ARNIWALA SHEIKH SUBANPUR	S-NPP	30.40709	74.16850	14:39:24	D	22.80
284	FAZILKA	ARNIWALA SHEIKH SUBANPUR	S-NPP	30.40736	74.17690	14:39:24	D	40.40
285	FAZILKA	ARNIWALA SHEIKH SUBANPUR	S-NPP	30.43135	74.12872	12:59:07	D	9.10
286	FAZILKA	FAZILKA	S-NPP	30.39695	73.98059	12:59:07	D	7.50
287	FAZILKA	FAZILKA	S-NPP	30.43474	74.12087	12:59:07	D	9.10
288	FAZILKA	FAZILKA	S-NPP	30.43920	73.98168	12:59:07	D	9.80
289	FAZILKA	FAZILKA	S-NPP	30.44016	74.00877	14:39:24	D	7.60
290	FAZILKA	FAZILKA	S-NPP	30.44410	73.98019	12:59:07	D	9.80
291	FAZILKA	FAZILKA	S-NPP	30.44522	74.00859	14:39:24	D	7.60
292	FAZILKA	FAZILKA	S-NPP	30.44559	73.98668	12:59:07	D	9.80
293	FAZILKA	FAZILKA	S-NPP	30.44582	74.02513	14:39:24	D	8.40

294	FAZILKA	FAZILKA	S-NPP	30.44790	74.02508	14:39:24	D	7.60
295	FAZILKA	FAZILKA	S-NPP	30.45197	73.99168	12:59:07	D	9.00
296	FAZILKA	FAZILKA	S-NPP	30.45215	74.06076	12:59:07	D	6.20
297	FAZILKA	FAZILKA	S-NPP	30.45452	74.02556	12:59:07	D	11.00
298	FAZILKA	FAZILKA	S-NPP	30.45510	74.07361	12:59:07	D	6.20
299	FAZILKA	FAZILKA	S-NPP	30.46370	73.97418	12:59:07	D	5.80
300	FAZILKA	FAZILKA	S-NPP	30.47851	74.10759	12:59:07	D	8.20
301	FAZILKA	FAZILKA	S-NPP	30.48372	74.01517	12:59:07	D	8.00
302	FAZILKA	FAZILKA	S-NPP	30.50516	73.99485	12:59:07	D	15.00
303	FAZILKA	JALALABAD	S-NPP	30.43733	74.22169	12:59:07	D	29.50
304	FAZILKA	JALALABAD	S-NPP	30.43972	74.18727	12:59:07	D	12.80
305	FAZILKA	JALALABAD	S-NPP	30.44362	74.22653	12:59:07	D	16.50
306	FAZILKA	JALALABAD	S-NPP	30.49300	74.17113	12:59:07	D	7.70
307	FAZILKA	JALALABAD	S-NPP	30.49381	74.09848	14:39:24	D	6.40
308	FAZILKA	JALALABAD	S-NPP	30.49889	74.12865	12:59:07	D	10.10
309	FAZILKA	JALALABAD	S-NPP	30.51254	74.09723	12:59:07	D	6.90
310	FAZILKA	JALALABAD	S-NPP	30.51297	74.09557	12:59:07	D	12.50
311	FAZILKA	JALALABAD	S-NPP	30.51740	74.09575	12:59:07	D	23.70
312	FAZILKA	JALALABAD	S-NPP	30.51783	74.09409	12:59:07	D	12.50
313	FAZILKA	JALALABAD	S-NPP	30.52990	74.08888	14:39:24	D	7.50
314	FAZILKA	JALALABAD	S-NPP	30.53098	74.08730	14:39:24	D	8.10
315	FAZILKA	JALALABAD	S-NPP	30.54446	74.30820	14:39:24	D	12.80
316	FAZILKA	JALALABAD	S-NPP	30.54458	74.30963	14:39:24	D	11.20
317	FAZILKA	JALALABAD	S-NPP	30.55181	74.30794	14:39:24	D	12.80
318	FAZILKA	JALALABAD	S-NPP	30.55194	74.30940	14:39:24	D	11.20
319	FAZILKA	JALALABAD	S-NPP	30.56312	74.20607	14:39:24	D	7.00
320	FAZILKA	JALALABAD	S-NPP	30.56356	74.20447	14:39:24	D	4.70
321	FAZILKA	JALALABAD	S-NPP	30.56698	74.19436	12:59:07	D	13.20
322	FAZILKA	JALALABAD	S-NPP	30.62858	74.17683	14:39:24	D	9.10
323	FAZILKA	JALALABAD	S-NPP	30.62973	74.17741	14:39:24	D	7.00
324	FAZILKA	JALALABAD	S-NPP	30.63617	74.18508	14:39:24	D	9.10
325	FAZILKA	JALALABAD	S-NPP	30.64225	74.18497	12:59:07	D	11.10
326	FAZILKA	JALALABAD	S-NPP	30.64296	74.18287	12:59:07	D	19.30

327	FAZILKA	KHUIAN SARWAR	S-NPP	30.11298	74.15260	12:59:07	D	32.50
328	FAZILKA	KHUIAN SARWAR	S-NPP	30.22059	73.98459	12:59:07	D	3.90
329	FAZILKA	KHUIAN SARWAR	S-NPP	30.32117	74.02699	14:39:24	D	12.50
330	FAZILKA	KHUIAN SARWAR	S-NPP	30.32269	74.02944	14:39:24	D	13.70
331	FIROZPUR	FIROZPUR	S-NPP	30.79885	74.55331	12:59:07	D	7.10
332	FIROZPUR	FIROZPUR	S-NPP	30.82098	74.51916	12:59:07	D	22.00
333	FIROZPUR	FIROZPUR	S-NPP	30.82181	74.52097	12:59:07	D	14.60
334	FIROZPUR	FIROZPUR	S-NPP	30.83501	74.58038	12:59:07	D	2.20
335	FIROZPUR	FIROZPUR	S-NPP	30.84737	74.61237	12:59:07	D	12.20
336	FIROZPUR	FIROZPUR	S-NPP	30.85675	74.60957	12:59:07	D	6.10
337	FIROZPUR	FIROZPUR	S-NPP	30.85694	74.61156	12:59:07	D	6.20
338	FIROZPUR	FIROZPUR	S-NPP	30.86009	74.55819	12:59:07	D	14.60
339	FIROZPUR	FIROZPUR	S-NPP	30.86480	74.55677	12:59:07	D	14.60
340	FIROZPUR	FIROZPUR	S-NPP	30.86943	74.64334	12:59:07	D	8.20
341	FIROZPUR	FIROZPUR	S-NPP	31.04428	74.79964	12:59:07	D	4.80
342	FIROZPUR	GHALL KHURD	S-NPP	30.79363	74.84339	12:59:07	D	4.90
343	FIROZPUR	GHALL KHURD	S-NPP	30.79814	74.90888	12:59:07	D	4.90
344	FIROZPUR	GHALL KHURD	S-NPP	30.80466	74.91051	12:59:07	D	4.20
345	FIROZPUR	GHALL KHURD	S-NPP	30.83433	74.71198	12:59:07	D	4.50
346	FIROZPUR	GHALL KHURD	S-NPP	30.86393	74.75036	12:59:07	D	6.00
347	FIROZPUR	GHALL KHURD	S-NPP	30.90224	74.78807	12:59:07	D	5.40
348	FIROZPUR	GHALL KHURD	S-NPP	30.92873	74.66299	12:59:07	D	3.70
349	FIROZPUR	GHALL KHURD	S-NPP	30.95625	74.80861	12:59:07	D	3.50
350	FIROZPUR	GURUHAR SAHAI	S-NPP	30.56013	74.34234	14:39:24	D	26.70
351	FIROZPUR	GURUHAR SAHAI	S-NPP	30.56037	74.35104	14:39:24	D	26.70
352	FIROZPUR	GURUHAR SAHAI	S-NPP	30.56044	74.34379	14:39:24	D	31.70
353	FIROZPUR	GURUHAR SAHAI	S-NPP	30.56073	74.35246	14:39:24	D	33.10
354	FIROZPUR	GURUHAR SAHAI	S-NPP	30.57730	74.35076	12:59:07	D	4.10
355	FIROZPUR	GURUHAR SAHAI	S-NPP	30.60517	74.31603	12:59:07	D	6.80
356	FIROZPUR	GURUHAR SAHAI	S-NPP	30.62454	74.27968	14:39:24	D	5.10
357	FIROZPUR	GURUHAR SAHAI	S-NPP	30.62643	74.34027	14:39:24	D	4.90
358	FIROZPUR	GURUHAR SAHAI	S-NPP	30.63247	74.45810	12:59:07	D	7.40
359	FIROZPUR	GURUHAR SAHAI	S-NPP	30.63532	74.31351	12:59:07	D	17.80



360	FIROZPUR	GURUHAR SAHAI	S-NPP	30.64590	74.22404	12:59:07	D	9.70
361	FIROZPUR	GURUHAR SAHAI	S-NPP	30.64685	74.22185	12:59:07	D	4.40
362	FIROZPUR	GURUHAR SAHAI	S-NPP	30.64831	74.22809	12:59:07	D	5.50
363	FIROZPUR	GURUHAR SAHAI	S-NPP	30.65453	74.29913	12:59:07	D	7.90
364	FIROZPUR	GURUHAR SAHAI	S-NPP	30.65649	74.29390	12:59:07	D	5.50
365	FIROZPUR	GURUHAR SAHAI	S-NPP	30.66331	74.27862	12:59:07	D	2.40
366	FIROZPUR	GURUHAR SAHAI	S-NPP	30.66706	74.24240	12:59:07	D	11.20
367	FIROZPUR	GURUHAR SAHAI	S-NPP	30.66726	74.21026	14:39:24	D	5.90
368	FIROZPUR	GURUHAR SAHAI	S-NPP	30.67186	74.24094	12:59:07	D	11.20
369	FIROZPUR	GURUHAR SAHAI	S-NPP	30.67251	74.43311	12:59:07	D	17.10
370	FIROZPUR	GURUHAR SAHAI	S-NPP	30.68880	74.46055	12:59:07	D	4.50
371	FIROZPUR	GURUHAR SAHAI	S-NPP	30.70849	74.43522	12:59:07	D	3.30
372	FIROZPUR	GURUHAR SAHAI	S-NPP	30.72384	74.31116	12:59:07	D	12.70
373	FIROZPUR	GURUHAR SAHAI	S-NPP	30.72466	74.33716	12:59:07	D	10.40
374	FIROZPUR	GURUHAR SAHAI	S-NPP	30.72664	74.32344	12:59:07	D	6.60
375	FIROZPUR	GURUHAR SAHAI	S-NPP	30.73141	74.32199	12:59:07	D	6.60
376	FIROZPUR	GURUHAR SAHAI	S-NPP	30.73838	74.35266	12:59:07	D	2.90
377	FIROZPUR	GURUHAR SAHAI	S-NPP	30.75113	74.29630	12:59:07	D	9.00
378	FIROZPUR	GURUHAR SAHAI	S-NPP	30.75252	74.30247	12:59:07	D	12.60
379	FIROZPUR	GURUHAR SAHAI	S-NPP	30.75934	74.33699	14:39:24	D	4.90
380	FIROZPUR	GURUHAR SAHAI	S-NPP	30.77124	74.45297	12:59:07	D	16.10
381	FIROZPUR	MAKHU	AQUA	31.03600	75.00700	13:12:04	D	49.90
382	FIROZPUR	MAKHU	AQUA	31.15400	75.04200	13:12:04	D	51.50
383	FIROZPUR	MAKHU	S-NPP	31.02041	74.82494	12:59:07	D	8.90
384	FIROZPUR	MAKHU	S-NPP	31.02169	74.83062	12:59:07	D	8.90
385	FIROZPUR	MAKHU	S-NPP	31.03171	74.80946	12:59:07	D	6.30
386	FIROZPUR	MAKHU	S-NPP	31.04062	74.84915	12:59:07	D	1.60
387	FIROZPUR	MAKHU	S-NPP	31.04142	74.83079	12:59:07	D	2.70
388	FIROZPUR	MAKHU	S-NPP	31.04580	75.00289	12:59:07	D	9.30
389	FIROZPUR	MAKHU	S-NPP	31.04809	75.00333	12:59:07	D	10.00
390	FIROZPUR	MAKHU	S-NPP	31.08970	75.02525	12:59:07	D	1.30
391	FIROZPUR	MAKHU	S-NPP	31.09678	75.12249	12:59:07	D	3.30
392	FIROZPUR	MAKHU	S-NPP	31.11098	75.07755	12:59:07	D	3.50

393	FIROZPUR	MAMDOT	AQUA	30.81800	74.34200	13:12:04	D	190.40
394	FIROZPUR	MAMDOT	S-NPP	30.76032	74.40461	12:59:07	D	5.70
395	FIROZPUR	MAMDOT	S-NPP	30.79221	74.47877	12:59:07	D	7.90
396	FIROZPUR	MAMDOT	S-NPP	30.81627	74.52057	12:59:07	D	16.90
397	FIROZPUR	MAMDOT	S-NPP	30.81709	74.52240	12:59:07	D	10.70
398	FIROZPUR	MAMDOT	S-NPP	30.81728	74.43262	12:59:07	D	3.50
399	FIROZPUR	MAMDOT	S-NPP	30.81962	74.51321	12:59:07	D	7.40
400	FIROZPUR	MAMDOT	S-NPP	30.82047	74.51500	12:59:07	D	14.60
401	FIROZPUR	MAMDOT	S-NPP	30.82067	74.42969	12:59:07	D	11.60
402	FIROZPUR	MAMDOT	S-NPP	30.82433	74.51180	12:59:07	D	7.40
403	FIROZPUR	MAMDOT	S-NPP	30.82639	74.34371	12:59:07	D	14.40
404	FIROZPUR	MAMDOT	S-NPP	30.83115	74.34226	12:59:07	D	12.30
405	FIROZPUR	MAMDOT	S-NPP	30.83869	74.35304	12:59:07	D	13.20
406	FIROZPUR	MAMDOT	S-NPP	30.91198	74.45349	12:59:07	D	5.30
407	FIROZPUR	MAMDOT	S-NPP	30.92565	74.47428	12:59:07	D	3.10
408	FIROZPUR	MAMDOT	S-NPP	30.92676	74.47456	12:59:07	D	4.20
409	FIROZPUR	MAMDOT	S-NPP	30.94787	74.46124	12:59:07	D	15.40
410	FIROZPUR	ZIRA	AQUA	31.02200	75.08900	13:12:04	D	42.60
411	FIROZPUR	ZIRA	AQUA	31.02800	75.09400	13:12:04	D	50.00
412	FIROZPUR	ZIRA	S-NPP	30.89973	74.88602	12:59:07	D	5.40
413	FIROZPUR	ZIRA	S-NPP	30.93110	75.01670	12:59:07	D	7.50
414	FIROZPUR	ZIRA	S-NPP	30.93502	75.05696	12:59:07	D	4.40
415	FIROZPUR	ZIRA	S-NPP	30.95760	74.88094	12:59:07	D	5.70
416	FIROZPUR	ZIRA	S-NPP	30.95802	74.97070	12:59:07	D	7.90
417	FIROZPUR	ZIRA	S-NPP	30.99963	74.98216	12:59:07	D	7.90
418	FIROZPUR	ZIRA	S-NPP	31.00297	74.97522	12:59:07	D	8.20
419	FIROZPUR	ZIRA	S-NPP	31.00315	74.90946	12:59:07	D	3.90
420	FIROZPUR	ZIRA	S-NPP	31.01945	75.09416	12:59:07	D	18.20
421	FIROZPUR	ZIRA	S-NPP	31.05368	74.92929	12:59:07	D	3.00
422	GURDASPUR	BATALA	S-NPP	31.72150	75.22160	12:59:07	D	7.50
423	GURDASPUR	BATALA	S-NPP	31.74775	75.16590	12:59:07	D	8.00
424	GURDASPUR	BATALA	S-NPP	31.74798	75.16877	12:59:07	D	8.00
425	GURDASPUR	BATALA	S-NPP	31.75127	75.18172	12:59:07	D	5.00

426	GURDASPUR	BATALA	S-NPP	31.75139	75.18463	12:59:07	D	13.20
427	GURDASPUR	BATALA	S-NPP	31.75244	75.18700	12:59:07	D	7.60
428	GURDASPUR	BATALA	S-NPP	31.76112	75.16193	12:59:07	D	7.90
429	GURDASPUR	BATALA	S-NPP	31.77835	75.21846	12:59:07	D	4.10
430	GURDASPUR	BATALA	S-NPP	31.78786	75.15398	12:59:07	D	4.50
431	GURDASPUR	BATALA	S-NPP	31.84746	75.27576	12:59:07	D	8.30
432	GURDASPUR	BATALA	S-NPP	31.86733	75.25877	12:59:07	D	4.90
433	GURDASPUR	BATALA	S-NPP	31.86971	75.26088	12:59:07	D	7.30
434	GURDASPUR	BATALA	S-NPP	31.87974	75.13519	12:59:07	D	10.40
435	GURDASPUR	BATALA	S-NPP	31.88207	75.14574	12:59:07	D	9.30
436	GURDASPUR	BATALA	S-NPP	31.88419	75.13387	12:59:07	D	10.40
437	GURDASPUR	BATALA	S-NPP	31.89345	75.17597	12:59:07	D	6.60
438	GURDASPUR	DERA BABA NANAK	S-NPP	31.95799	75.03532	12:59:07	D	7.20
439	GURDASPUR	DERA BABA NANAK	S-NPP	31.97046	75.04859	12:59:07	D	6.40
440	GURDASPUR	DERA BABA NANAK	S-NPP	31.97163	75.05390	12:59:07	D	6.40
441	GURDASPUR	DERA BABA NANAK	S-NPP	32.00901	75.11599	12:59:07	D	11.80
442	GURDASPUR	DERA BABA NANAK	S-NPP	32.02087	75.06175	12:59:07	D	7.40
443	GURDASPUR	DHARIWAL	AQUA	31.96200	75.29000	13:12:04	D	58.60
444	GURDASPUR	DHARIWAL	S-NPP	31.89524	75.26990	12:59:07	D	10.30
445	GURDASPUR	DHARIWAL	S-NPP	31.90254	75.38824	12:59:07	D	5.30
446	GURDASPUR	DHARIWAL	S-NPP	31.91350	75.18115	12:59:07	D	17.40
447	GURDASPUR	DHARIWAL	S-NPP	31.91465	75.18640	12:59:07	D	9.50
448	GURDASPUR	DHARIWAL	S-NPP	31.93443	75.40597	12:59:07	D	4.10
449	GURDASPUR	DHARIWAL	S-NPP	31.94146	75.22292	12:59:07	D	8.70
450	GURDASPUR	DHARIWAL	S-NPP	31.95937	75.28391	12:59:07	D	7.70
451	GURDASPUR	DHARIWAL	S-NPP	31.96265	75.27742	12:59:07	D	10.00
452	GURDASPUR	DHARIWAL	S-NPP	31.96377	75.28259	12:59:07	D	7.70
453	GURDASPUR	DHARIWAL	S-NPP	31.96489	75.28776	12:59:07	D	7.70
454	GURDASPUR	DHARIWAL	S-NPP	31.96600	75.29292	12:59:07	D	8.00
455	GURDASPUR	FATEHGARH CHURIAN	S-NPP	31.80105	75.12747	12:59:07	D	8.30
456	GURDASPUR	FATEHGARH CHURIAN	S-NPP	31.80301	75.09291	12:59:07	D	8.50
457	GURDASPUR	FATEHGARH CHURIAN	S-NPP	31.80452	75.14337	12:59:07	D	7.40
458	GURDASPUR	FATEHGARH CHURIAN	S-NPP	31.82548	75.08356	12:59:07	D	6.10

459	GURDASPUR	FATEHGARH CHURIAN	S-NPP	31.82781	75.11947	12:59:07	D	6.50
460	GURDASPUR	FATEHGARH CHURIAN	S-NPP	31.83299	75.05547	12:59:07	D	5.60
461	GURDASPUR	FATEHGARH CHURIAN	S-NPP	31.83414	75.05828	12:59:07	D	8.70
462	GURDASPUR	FATEHGARH CHURIAN	S-NPP	31.83984	74.97645	12:59:07	D	5.50
463	GURDASPUR	FATEHGARH CHURIAN	S-NPP	31.84163	75.02753	12:59:07	D	3.70
464	GURDASPUR	FATEHGARH CHURIAN	S-NPP	31.84611	75.02619	12:59:07	D	5.40
465	GURDASPUR	FATEHGARH CHURIAN	S-NPP	31.85003	74.97915	12:59:07	D	7.40
466	GURDASPUR	FATEHGARH CHURIAN	S-NPP	31.85031	75.00204	12:59:07	D	4.30
467	GURDASPUR	FATEHGARH CHURIAN	S-NPP	31.88453	74.93994	12:59:07	D	10.10
468	GURDASPUR	FATEHGARH CHURIAN	S-NPP	31.91199	74.95766	12:59:07	D	8.40
469	GURDASPUR	FATEHGARH CHURIAN	S-NPP	31.91290	74.96021	12:59:07	D	13.10
470	GURDASPUR	FATEHGARH CHURIAN	S-NPP	31.91320	74.96305	12:59:07	D	8.20
471	GURDASPUR	GURDASPUR	S-NPP	32.02186	75.44484	12:59:07	D	7.00
472	GURDASPUR	GURDASPUR	S-NPP	32.02621	75.44353	12:59:07	D	7.00
473	GURDASPUR	GURDASPUR	S-NPP	32.04003	75.32258	12:59:07	D	6.90
474	GURDASPUR	GURDASPUR	S-NPP	32.05891	75.43073	12:59:07	D	9.10
475	GURDASPUR	GURDASPUR	S-NPP	32.07307	75.41035	12:59:07	D	12.20
476	GURDASPUR	KAHNUWAN	S-NPP	31.84227	75.38165	12:59:07	D	17.50
477	GURDASPUR	KAHNUWAN	S-NPP	31.84570	75.44042	12:59:07	D	3.90
478	GURDASPUR	KAHNUWAN	S-NPP	31.86646	75.51479	12:59:07	D	4.20
479	GURDASPUR	KAHNUWAN	S-NPP	31.89276	75.44275	12:59:07	D	8.80
480	GURDASPUR	KALANAUR	S-NPP	31.94363	75.21116	12:59:07	D	12.60
481	GURDASPUR	KALANAUR	S-NPP	32.08909	75.21317	12:59:07	D	4.20
482	GURDASPUR	QADIAN	S-NPP	31.74518	75.30912	12:59:07	D	6.30
483	GURDASPUR	QADIAN	S-NPP	31.76744	75.49901	12:59:07	D	3.50
484	GURDASPUR	QADIAN	S-NPP	31.77183	75.45448	12:59:07	D	9.70
485	GURDASPUR	QADIAN	S-NPP	31.77729	75.34922	12:59:07	D	5.90
486	GURDASPUR	QADIAN	S-NPP	31.79806	75.49000	12:59:07	D	6.20
487	GURDASPUR	QADIAN	S-NPP	31.80679	75.32644	12:59:07	D	4.80
488	GURDASPUR	SRI HARGOBINDPUR	S-NPP	31.64760	75.43271	12:59:07	D	6.50
489	GURDASPUR	SRI HARGOBINDPUR	S-NPP	31.65287	75.30463	12:59:07	D	7.20
490	GURDASPUR	SRI HARGOBINDPUR	S-NPP	31.65421	75.44169	12:59:07	D	5.30
491	GURDASPUR	SRI HARGOBINDPUR	S-NPP	31.66817	75.38687	12:59:07	D	10.20

492	GURDASPUR	SRI HARGOBINDPUR	S-NPP	31.67069	75.38764	12:59:07	D	4.90
493	GURDASPUR	SRI HARGOBINDPUR	S-NPP	31.67400	75.38118	12:59:07	D	4.90
494	GURDASPUR	SRI HARGOBINDPUR	S-NPP	31.69540	75.31833	12:59:07	D	4.50
495	GURDASPUR	SRI HARGOBINDPUR	S-NPP	31.69982	75.31701	12:59:07	D	3.80
496	GURDASPUR	SRI HARGOBINDPUR	S-NPP	31.70581	75.40866	12:59:07	D	13.70
497	GURDASPUR	SRI HARGOBINDPUR	S-NPP	31.70639	75.30399	12:59:07	D	4.70
498	GURDASPUR	SRI HARGOBINDPUR	S-NPP	31.71021	75.40738	12:59:07	D	8.80
499	GURDASPUR	SRI HARGOBINDPUR	S-NPP	31.71133	75.41250	12:59:07	D	8.80
500	GURDASPUR	SRI HARGOBINDPUR	S-NPP	31.73232	75.44442	12:59:07	D	6.60
501	GURDASPUR	SRI HARGOBINDPUR	S-NPP	31.74328	75.43033	12:59:07	D	3.20
502	GURDASPUR	SRI HARGOBINDPUR	S-NPP	31.74748	75.34155	12:59:07	D	7.50
503	HOSHIARPUR	DASUYA	S-NPP	31.76513	75.59570	12:59:07	D	9.60
504	HOSHIARPUR	DASUYA	S-NPP	31.76948	75.59441	12:59:07	D	20.40
505	HOSHIARPUR	DASUYA	S-NPP	31.78897	75.62057	12:59:07	D	65.00
506	HOSHIARPUR	DASUYA	S-NPP	31.79005	75.62557	12:59:07	D	65.00
507	HOSHIARPUR	DASUYA	S-NPP	31.82921	75.59284	12:59:07	D	3.10
508	HOSHIARPUR	DASUYA	S-NPP	31.83166	75.58894	12:59:07	D	4.30
509	HOSHIARPUR	DASUYA	S-NPP	31.83521	75.68625	12:59:07	D	7.20
510	HOSHIARPUR	DASUYA	S-NPP	31.88800	75.63599	12:59:07	D	7.00
511	HOSHIARPUR	GARH SHANKAR	S-NPP	31.17583	76.16364	12:59:07	D	1.50
512	HOSHIARPUR	GARH SHANKAR	S-NPP	31.28826	75.97865	12:59:07	D	8.10
513	HOSHIARPUR	HAJIPUR	S-NPP	31.93737	75.69510	12:59:07	D	5.90
514	HOSHIARPUR	HAJIPUR	S-NPP	32.01768	75.68420	12:59:07	D	6.30
515	HOSHIARPUR	HOSHIARPUR-1	S-NPP	31.56777	75.78509	12:59:07	D	7.10
516	HOSHIARPUR	HOSHIARPUR-2	S-NPP	31.38777	75.86436	12:59:07	D	3.10
517	HOSHIARPUR	MAHILPUR	S-NPP	31.31891	75.90785	12:59:07	D	6.60
518	HOSHIARPUR	MAHILPUR	S-NPP	31.32219	75.90170	12:59:07	D	7.90
519	HOSHIARPUR	MAHILPUR	S-NPP	31.32475	75.97859	12:59:07	D	3.50
520	HOSHIARPUR	MAHILPUR	S-NPP	31.33411	75.89308	12:59:07	D	6.60
521	HOSHIARPUR	MAHILPUR	S-NPP	31.36281	75.89750	12:59:07	D	4.00
522	HOSHIARPUR	MAHILPUR	S-NPP	31.37333	75.94630	12:59:07	D	4.80
523	HOSHIARPUR	MAHILPUR	S-NPP	31.43773	76.05617	12:59:07	D	2.90
524	HOSHIARPUR	MUKERIAN	S-NPP	31.91821	75.64822	12:59:07	D	2.90

525	HOSHIARPUR	MUKERIAN	S-NPP	31.99865	75.57409	12:59:07	D	3.50
526	HOSHIARPUR	MUKERIAN	S-NPP	32.00393	75.62006	12:59:07	D	4.10
527	HOSHIARPUR	MUKERIAN	S-NPP	32.04596	75.62341	12:59:07	D	9.90
528	HOSHIARPUR	TANDA	S-NPP	31.60736	75.62557	12:59:07	D	32.50
529	HOSHIARPUR	TANDA	S-NPP	31.61715	75.62806	12:59:07	D	4.80
530	HOSHIARPUR	TANDA	S-NPP	31.62669	75.67311	12:59:07	D	3.70
531	HOSHIARPUR	TANDA	S-NPP	31.64221	75.58000	12:59:07	D	5.70
532	HOSHIARPUR	TANDA	S-NPP	31.65855	75.61263	12:59:07	D	10.80
533	HOSHIARPUR	TANDA	S-NPP	31.66070	75.64396	12:59:07	D	6.40
534	HOSHIARPUR	TANDA	S-NPP	31.70554	75.55076	12:59:07	D	4.60
535	HOSHIARPUR	TANDA	S-NPP	31.71398	75.59466	12:59:07	D	8.30
536	HOSHIARPUR	TANDA	S-NPP	31.71834	75.59339	12:59:07	D	8.30
537	JALANDHAR	ADAMPUR	S-NPP	31.36544	75.78172	12:59:07	D	7.50
538	JALANDHAR	ADAMPUR	S-NPP	31.38209	75.68684	12:59:07	D	6.40
539	JALANDHAR	ADAMPUR	S-NPP	31.39082	75.68432	12:59:07	D	19.80
540	JALANDHAR	ADAMPUR	S-NPP	31.40848	75.63640	12:59:07	D	8.40
541	JALANDHAR	ADAMPUR	S-NPP	31.41152	75.63779	12:59:07	D	7.30
542	JALANDHAR	BHOGPUR	S-NPP	31.52022	75.71466	12:59:07	D	3.80
543	JALANDHAR	BHOGPUR	S-NPP	31.52025	75.71263	12:59:07	D	4.60
544	JALANDHAR	BHOGPUR	S-NPP	31.52235	75.61839	12:59:07	D	4.90
545	JALANDHAR	BHOGPUR	S-NPP	31.53218	75.68476	12:59:07	D	2.70
546	JALANDHAR	BHOGPUR	S-NPP	31.53654	75.68349	12:59:07	D	2.70
547	JALANDHAR	JALANDHAR EAST	S-NPP	31.22540	75.60073	12:59:07	D	6.30
548	JALANDHAR	JALANDHAR WEST	S-NPP	31.26837	75.53931	12:59:07	D	5.90
549	JALANDHAR	JALANDHAR WEST	S-NPP	31.27010	75.53605	12:59:07	D	6.10
550	JALANDHAR	JALANDHAR WEST	S-NPP	31.46400	75.62256	12:59:07	D	60.90
551	JALANDHAR	LOHIAN	S-NPP	31.11599	75.20912	12:59:07	D	3.10
552	JALANDHAR	LOHIAN	S-NPP	31.12050	75.20779	12:59:07	D	3.10
553	JALANDHAR	MEHATPUR	S-NPP	31.04702	75.48710	12:59:07	D	10.70
554	JALANDHAR	MEHATPUR	S-NPP	31.04788	75.48412	12:59:07	D	16.20
555	JALANDHAR	MEHATPUR	S-NPP	31.10892	75.43864	12:59:07	D	6.50
556	JALANDHAR	NAKODAR	S-NPP	31.15676	75.50760	12:59:07	D	3.40
557	JALANDHAR	NAKODAR	S-NPP	31.15772	75.50578	12:59:07	D	4.20

558	JALANDHAR	NAKODAR	S-NPP	31.16224	75.57730	12:59:07	D	5.30
559	JALANDHAR	NAKODAR	S-NPP	31.16362	75.57526	12:59:07	D	5.50
560	JALANDHAR	NUR MAHAL	S-NPP	31.00840	75.67896	12:59:07	D	6.80
561	JALANDHAR	NUR MAHAL	S-NPP	31.01171	75.69422	12:59:07	D	7.20
562	JALANDHAR	NUR MAHAL	S-NPP	31.02052	75.67014	12:59:07	D	4.70
563	JALANDHAR	NUR MAHAL	S-NPP	31.07720	75.57471	12:59:07	D	7.30
564	JALANDHAR	NUR MAHAL	S-NPP	31.08484	75.54508	12:59:07	D	4.70
565	JALANDHAR	PHILLAUR	AQUA	31.18800	75.79900	13:12:04	D	37.00
566	JALANDHAR	PHILLAUR	S-NPP	31.05825	75.88847	12:59:07	D	3.60
567	JALANDHAR	PHILLAUR	S-NPP	31.06566	75.92303	12:59:07	D	2.80
568	JALANDHAR	RURKA KALAN	AQUA	31.09000	75.70300	13:12:04	D	34.30
569	JALANDHAR	RURKA KALAN	S-NPP	31.13904	75.66540	12:59:07	D	4.20
570	JALANDHAR	SHAHKOT	S-NPP	31.05301	75.26905	12:59:07	D	4.20
571	JALANDHAR	SHAHKOT	S-NPP	31.05418	75.27441	12:59:07	D	4.20
572	JALANDHAR	SHAHKOT	S-NPP	31.06219	75.28915	12:59:07	D	8.70
573	JALANDHAR	SHAHKOT	S-NPP	31.06252	75.33437	12:59:07	D	5.20
574	JALANDHAR	SHAHKOT	S-NPP	31.07047	75.34896	12:59:07	D	7.20
575	JALANDHAR	SHAHKOT	S-NPP	31.13895	75.42424	12:59:07	D	4.80
576	JALANDHAR	SHAHKOT	S-NPP	31.14007	75.42948	12:59:07	D	4.80
577	JALANDHAR	SHAHKOT	S-NPP	31.14053	75.42785	12:59:07	D	8.50
578	KAPURTHALA	DHILWAN	S-NPP	31.48702	75.30643	12:59:07	D	8.90
579	KAPURTHALA	KAPURTHALA	S-NPP	31.38148	75.30688	12:59:07	D	2.70
580	KAPURTHALA	NADALA	AQUA	31.57600	75.44200	13:12:04	D	38.50
581	KAPURTHALA	NADALA	S-NPP	31.51779	75.51196	12:59:07	D	5.80
582	KAPURTHALA	NADALA	S-NPP	31.51890	75.51705	12:59:07	D	5.80
583	KAPURTHALA	NADALA	S-NPP	31.53297	75.40921	12:59:07	D	5.40
584	KAPURTHALA	NADALA	S-NPP	31.56830	75.50797	12:59:07	D	6.60
585	KAPURTHALA	NADALA	S-NPP	31.57487	75.51688	12:59:07	D	3.90
586	KAPURTHALA	NADALA	S-NPP	31.57817	75.51049	12:59:07	D	5.80
587	KAPURTHALA	NADALA	S-NPP	31.57926	75.51558	12:59:07	D	11.10
588	KAPURTHALA	NADALA	S-NPP	31.58356	75.55749	12:59:07	D	5.70
589	KAPURTHALA	NADALA	S-NPP	31.58485	75.43233	12:59:07	D	5.10
590	KAPURTHALA	NADALA	S-NPP	31.58594	75.43748	12:59:07	D	5.50

591	KAPURTHALA	NADALA	S-NPP	31.58696	75.43400	12:59:07	D	10.50
592	KAPURTHALA	PHAGWARA	S-NPP	31.20465	75.74107	12:59:07	D	9.20
593	KAPURTHALA	PHAGWARA	S-NPP	31.20572	75.70338	12:59:07	D	2.60
594	KAPURTHALA	PHAGWARA	S-NPP	31.20659	75.74227	12:59:07	D	5.90
595	KAPURTHALA	PHAGWARA	S-NPP	31.23286	75.82814	12:59:07	D	2.90
596	KAPURTHALA	PHAGWARA	S-NPP	31.24509	75.69196	12:59:07	D	5.00
597	KAPURTHALA	PHAGWARA	S-NPP	31.25251	75.79086	12:59:07	D	10.60
598	KAPURTHALA	SULTANPUR LODHI	AQUA	31.27400	75.10600	13:12:04	D	65.00
599	KAPURTHALA	SULTANPUR LODHI	AQUA	31.28000	75.10800	13:12:04	D	105.50
600	KAPURTHALA	SULTANPUR LODHI	S-NPP	31.15960	75.06070	12:59:07	D	17.00
601	KAPURTHALA	SULTANPUR LODHI	S-NPP	31.15974	75.05724	12:59:07	D	21.10
602	KAPURTHALA	SULTANPUR LODHI	S-NPP	31.16093	75.06273	12:59:07	D	21.10
603	KAPURTHALA	SULTANPUR LODHI	S-NPP	31.16414	75.05936	12:59:07	D	22.70
604	KAPURTHALA	SULTANPUR LODHI	S-NPP	31.16427	75.05588	12:59:07	D	21.10
605	KAPURTHALA	SULTANPUR LODHI	S-NPP	31.16547	75.06138	12:59:07	D	21.10
606	KAPURTHALA	SULTANPUR LODHI	S-NPP	31.16745	75.05254	12:59:07	D	72.40
607	KAPURTHALA	SULTANPUR LODHI	S-NPP	31.16882	75.05453	12:59:07	D	4.90
608	KAPURTHALA	SULTANPUR LODHI	S-NPP	31.27915	75.10385	12:59:07	D	2.00
609	KAPURTHALA	SULTANPUR LODHI	S-NPP	31.27945	75.10074	12:59:07	D	6.60
610	KAPURTHALA	SULTANPUR LODHI	S-NPP	31.28400	75.12548	12:59:07	D	6.40
611	KAPURTHALA	SULTANPUR LODHI	S-NPP	31.28534	75.12785	12:59:07	D	11.60
612	KAPURTHALA	SULTANPUR LODHI	S-NPP	31.28851	75.12415	12:59:07	D	7.00
613	KAPURTHALA	SULTANPUR LODHI	S-NPP	31.28868	75.12110	12:59:07	D	2.60
614	LUDHIANA	DEHLON	S-NPP	30.76715	75.88985	12:59:07	D	5.50
615	LUDHIANA	DEHLON	S-NPP	30.77378	75.87733	12:59:07	D	6.10
616	LUDHIANA	DORAHA	S-NPP	30.73085	76.10716	12:59:07	D	5.20
617	LUDHIANA	DORAHA	S-NPP	30.73705	76.02996	12:59:07	D	5.00
618	LUDHIANA	DORAHA	S-NPP	30.74232	76.05447	12:59:07	D	7.20
619	LUDHIANA	DORAHA	S-NPP	30.75606	75.92479	12:59:07	D	7.90
620	LUDHIANA	DORAHA	S-NPP	30.76149	75.92854	12:59:07	D	14.90
621	LUDHIANA	DORAHA	S-NPP	30.80978	76.00406	12:59:07	D	9.10
622	LUDHIANA	JAGRAON	S-NPP	30.61773	75.41669	12:59:07	D	3.90
623	LUDHIANA	JAGRAON	S-NPP	30.62656	75.39137	12:59:07	D	10.10



624	LUDHIANA	JAGRAON	S-NPP	30.62909	75.42477	12:59:07	D	1.80
625	LUDHIANA	JAGRAON	S-NPP	30.67421	75.43436	12:59:07	D	19.40
626	LUDHIANA	JAGRAON	S-NPP	30.67744	75.40505	12:59:07	D	15.30
627	LUDHIANA	JAGRAON	S-NPP	30.69084	75.37837	12:59:07	D	5.90
628	LUDHIANA	JAGRAON	S-NPP	30.69529	75.38148	12:59:07	D	12.70
629	LUDHIANA	JAGRAON	S-NPP	30.70592	75.42947	12:59:07	D	29.60
630	LUDHIANA	JAGRAON	S-NPP	30.70681	75.43053	12:59:07	D	26.70
631	LUDHIANA	JAGRAON	S-NPP	30.71138	75.41091	12:59:07	D	9.80
632	LUDHIANA	JAGRAON	S-NPP	30.74217	75.46407	12:59:07	D	5.50
633	LUDHIANA	JAGRAON	S-NPP	30.74780	75.46807	12:59:07	D	5.50
634	LUDHIANA	JAGRAON	S-NPP	30.75228	75.46676	12:59:07	D	10.50
635	LUDHIANA	JAGRAON	S-NPP	30.77548	75.39796	12:59:07	D	6.20
636	LUDHIANA	JAGRAON	S-NPP	30.78283	75.54172	12:59:07	D	4.80
637	LUDHIANA	JAGRAON	S-NPP	30.78729	75.54042	12:59:07	D	16.50
638	LUDHIANA	JAGRAON	S-NPP	30.80876	75.39703	12:59:07	D	13.80
639	LUDHIANA	JAGRAON	S-NPP	30.84957	75.63271	12:59:07	D	28.10
640	LUDHIANA	KHANNA	S-NPP	30.67308	76.05089	12:59:07	D	2.40
641	LUDHIANA	KHANNA	S-NPP	30.70612	76.18608	01:49:07	N	0.60
642	LUDHIANA	LUDHIANA-1	S-NPP	30.84724	75.99157	12:59:07	D	4.20
643	LUDHIANA	LUDHIANA-1	S-NPP	30.88626	75.74969	12:59:07	D	2.30
644	LUDHIANA	LUDHIANA-1	S-NPP	30.89065	75.74843	12:59:07	D	2.30
645	LUDHIANA	LUDHIANA-2	S-NPP	30.88786	76.05267	12:59:07	D	6.80
646	LUDHIANA	LUDHIANA-2	S-NPP	30.88890	76.05754	12:59:07	D	8.30
647	LUDHIANA	LUDHIANA-2	S-NPP	30.89425	76.06118	12:59:07	D	8.30
648	LUDHIANA	LUDHIANA-2	S-NPP	30.91643	76.10116	12:59:07	D	16.30
649	LUDHIANA	LUDHIANA-2	S-NPP	30.92073	76.09992	12:59:07	D	16.30
650	LUDHIANA	LUDHIANA-2	S-NPP	30.92175	76.10475	12:59:07	D	16.30
651	LUDHIANA	LUDHIANA-2	S-NPP	30.92955	75.97023	12:59:07	D	5.30
652	LUDHIANA	LUDHIANA-2	S-NPP	30.92966	75.96794	12:59:07	D	3.10
653	LUDHIANA	LUDHIANA-2	S-NPP	30.95443	75.69761	12:59:07	D	7.30
654	LUDHIANA	LUDHIANA-2	S-NPP	30.98331	75.85504	12:59:07	D	7.40
655	LUDHIANA	MACHHIWARA	S-NPP	30.90309	76.14592	12:59:07	D	6.60
656	LUDHIANA	MACHHIWARA	S-NPP	30.93886	76.27233	12:59:07	D	3.70

657	LUDHIANA	MALOUD	S-NPP	30.61269	75.96304	12:59:07	D	6.50
658	LUDHIANA	MALOUD	S-NPP	30.61491	75.95184	12:59:07	D	3.40
659	LUDHIANA	MALOUD	S-NPP	30.66167	75.97555	12:59:07	D	26.00
660	LUDHIANA	MALOUD	S-NPP	30.66498	75.96935	12:59:07	D	26.00
661	LUDHIANA	MALOUD	S-NPP	30.72121	75.91357	12:59:07	D	5.10
662	LUDHIANA	PAKHOWAL	S-NPP	30.64402	75.76140	12:59:07	D	10.50
663	LUDHIANA	PAKHOWAL	S-NPP	30.66526	75.74178	12:59:07	D	5.90
664	LUDHIANA	PAKHOWAL	S-NPP	30.70613	75.71380	12:59:07	D	5.80
665	LUDHIANA	PAKHOWAL	S-NPP	30.71704	75.82953	12:59:07	D	12.10
666	LUDHIANA	PAKHOWAL	S-NPP	30.72948	75.81642	01:49:07	N	0.50
667	LUDHIANA	PAKHOWAL	S-NPP	30.74914	75.73948	12:59:07	D	7.30
668	LUDHIANA	PAKHOWAL	S-NPP	30.75355	75.73820	12:59:07	D	7.30
669	LUDHIANA	PAKHOWAL	S-NPP	30.78884	75.80728	12:59:07	D	8.70
670	LUDHIANA	RAIKOT	S-NPP	30.56828	75.54066	12:59:07	D	7.90
671	LUDHIANA	RAIKOT	S-NPP	30.59978	75.62067	12:59:07	D	23.90
672	LUDHIANA	RAIKOT	S-NPP	30.61497	75.49100	12:59:07	D	11.00
673	LUDHIANA	RAIKOT	S-NPP	30.62009	75.57897	12:59:07	D	3.80
674	LUDHIANA	RAIKOT	S-NPP	30.62626	75.49901	12:59:07	D	16.00
675	LUDHIANA	RAIKOT	S-NPP	30.62742	75.50428	12:59:07	D	21.90
676	LUDHIANA	RAIKOT	S-NPP	30.63059	75.47524	12:59:07	D	9.60
677	LUDHIANA	RAIKOT	S-NPP	30.63422	75.69337	12:59:07	D	13.30
678	LUDHIANA	RAIKOT	S-NPP	30.63519	75.69043	12:59:07	D	8.20
679	LUDHIANA	RAIKOT	S-NPP	30.63979	75.67532	12:59:07	D	7.20
680	LUDHIANA	RAIKOT	S-NPP	30.64490	75.62720	12:59:07	D	11.60
681	LUDHIANA	RAIKOT	S-NPP	30.64841	75.66473	12:59:07	D	6.40
682	LUDHIANA	RAIKOT	S-NPP	30.65867	75.47274	12:59:07	D	6.50
683	LUDHIANA	RAIKOT	S-NPP	30.66327	75.49394	12:59:07	D	7.70
684	LUDHIANA	RAIKOT	S-NPP	30.66462	75.54389	12:59:07	D	5.30
685	LUDHIANA	RAIKOT	S-NPP	30.66576	75.54913	12:59:07	D	6.80
686	LUDHIANA	RAIKOT	S-NPP	30.66602	75.61562	12:59:07	D	6.60
687	LUDHIANA	RAIKOT	S-NPP	30.66715	75.62082	12:59:07	D	6.60
688	LUDHIANA	RAIKOT	S-NPP	30.68242	75.51642	12:59:07	D	4.80
689	LUDHIANA	SAMRALA	S-NPP	30.81262	76.14799	12:59:07	D	62.50

690	LUDHIANA	SAMRALA	S-NPP	30.81872	76.17696	12:59:07	D	7.40
691	LUDHIANA	SIDHWAN BET	S-NPP	30.82027	75.42753	12:59:07	D	5.70
692	LUDHIANA	SIDHWAN BET	S-NPP	30.85400	75.63142	12:59:07	D	7.40
693	LUDHIANA	SIDHWAN BET	S-NPP	30.85699	75.57289	12:59:07	D	16.80
694	LUDHIANA	SIDHWAN BET	S-NPP	30.88446	75.48176	12:59:07	D	8.80
695	LUDHIANA	SIDHWAN BET	S-NPP	30.90477	75.57561	12:59:07	D	4.60
696	LUDHIANA	SUDHAR	S-NPP	30.71272	75.59113	12:59:07	D	7.80
697	LUDHIANA	SUDHAR	S-NPP	30.77190	75.60023	12:59:07	D	70.10
698	MANSA	BHIKHI	S-NPP	30.02212	75.52861	12:59:07	D	10.10
699	MANSA	BHIKHI	S-NPP	30.09713	75.63483	12:59:07	D	6.70
700	MANSA	BHIKHI	S-NPP	30.09829	75.64012	12:59:07	D	7.50
701	MANSA	BHIKHI	S-NPP	30.14575	75.37799	12:59:07	D	12.30
702	MANSA	BHIKHI	S-NPP	30.14846	75.41200	12:59:07	D	5.90
703	MANSA	BHIKHI	S-NPP	30.18080	75.44890	12:59:07	D	7.40
704	MANSA	BUDHLADA	S-NPP	29.81919	75.60259	12:59:07	D	6.50
705	MANSA	BUDHLADA	S-NPP	29.95074	75.55465	12:59:07	D	8.20
706	MANSA	BUDHLADA	S-NPP	29.95528	75.55337	12:59:07	D	8.60
707	MANSA	MANSA	S-NPP	30.08448	75.35741	12:59:07	D	7.10
708	MOGA	BAGHA PURANA	AQUA	30.66800	75.15600	13:12:04	D	56.00
709	MOGA	BAGHA PURANA	S-NPP	30.52386	75.05918	12:59:07	D	4.30
710	MOGA	BAGHA PURANA	S-NPP	30.57611	75.07375	12:59:07	D	5.40
711	MOGA	BAGHA PURANA	S-NPP	30.60393	75.17805	12:59:07	D	11.50
712	MOGA	BAGHA PURANA	S-NPP	30.61072	74.98560	12:59:07	D	4.70
713	MOGA	BAGHA PURANA	S-NPP	30.61151	74.98445	12:59:07	D	6.80
714	MOGA	BAGHA PURANA	S-NPP	30.61195	75.08109	12:59:07	D	7.30
715	MOGA	BAGHA PURANA	S-NPP	30.61319	74.99691	12:59:07	D	5.00
716	MOGA	BAGHA PURANA	S-NPP	30.61331	75.07965	12:59:07	D	9.60
717	MOGA	BAGHA PURANA	S-NPP	30.62124	75.13654	12:59:07	D	5.00
718	MOGA	BAGHA PURANA	S-NPP	30.62410	75.13683	12:59:07	D	5.80
719	MOGA	BAGHA PURANA	S-NPP	30.62875	75.03941	12:59:07	D	12.80
720	MOGA	BAGHA PURANA	S-NPP	30.63412	75.15048	12:59:07	D	7.30
721	MOGA	BAGHA PURANA	S-NPP	30.63573	75.17936	12:59:07	D	7.40
722	MOGA	BAGHA PURANA	S-NPP	30.64029	75.17803	12:59:07	D	6.30

723	MOGA	BAGHA PURANA	S-NPP	30.66311	75.17137	12:59:07	D	8.20
724	MOGA	BAGHA PURANA	S-NPP	30.67562	75.00765	12:59:07	D	7.90
725	MOGA	BAGHA PURANA	S-NPP	30.67612	74.96541	12:59:07	D	6.60
726	MOGA	BAGHA PURANA	S-NPP	30.67970	75.04832	12:59:07	D	5.60
727	MOGA	BAGHA PURANA	S-NPP	30.68073	74.96404	12:59:07	D	5.70
728	MOGA	BAGHA PURANA	S-NPP	30.68501	75.18256	12:59:07	D	8.00
729	MOGA	BAGHA PURANA	S-NPP	30.69545	74.94154	12:59:07	D	11.30
730	MOGA	BAGHA PURANA	S-NPP	30.69566	75.12069	12:59:07	D	3.50
731	MOGA	BAGHA PURANA	S-NPP	30.69655	74.93896	12:59:07	D	12.40
732	MOGA	BAGHA PURANA	S-NPP	30.69779	75.10825	12:59:07	D	21.70
733	MOGA	BAGHA PURANA	S-NPP	30.70234	75.01772	12:59:07	D	10.70
734	MOGA	BAGHA PURANA	S-NPP	30.70481	75.11800	12:59:07	D	6.30
735	MOGA	BAGHA PURANA	S-NPP	30.71212	74.97282	12:59:07	D	27.90
736	MOGA	BAGHA PURANA	S-NPP	30.71335	74.97846	12:59:07	D	27.90
737	MOGA	BAGHA PURANA	S-NPP	30.71459	75.07370	12:59:07	D	3.40
738	MOGA	BAGHA PURANA	S-NPP	30.71673	74.97146	12:59:07	D	27.90
739	MOGA	BAGHA PURANA	S-NPP	30.71796	74.97710	12:59:07	D	27.90
740	MOGA	BAGHA PURANA	S-NPP	30.74655	75.00842	12:59:07	D	12.10
741	MOGA	BAGHA PURANA	S-NPP	30.74780	75.01402	12:59:07	D	7.90
742	MOGA	BAGHA PURANA	S-NPP	30.74905	75.01961	12:59:07	D	7.90
743	MOGA	BAGHA PURANA	S-NPP	30.78468	74.93706	12:59:07	D	8.60
744	MOGA	KOT ISE KHAN AT DHARAMKOT	S-NPP	30.86028	75.21603	12:59:07	D	3.60
745	MOGA	KOT ISE KHAN AT DHARAMKOT	S-NPP	30.88162	75.35881	12:59:07	D	15.60
746	MOGA	KOT ISE KHAN AT DHARAMKOT	S-NPP	30.88957	75.37347	12:59:07	D	10.60
747	MOGA	KOT ISE KHAN AT DHARAMKOT	S-NPP	30.90068	75.33904	12:59:07	D	3.50
748	MOGA	KOT ISE KHAN AT DHARAMKOT	S-NPP	30.90446	75.37759	12:59:07	D	5.90
749	MOGA	KOT ISE KHAN AT DHARAMKOT	S-NPP	30.90532	75.38017	12:59:07	D	3.90
750	MOGA	KOT ISE KHAN AT DHARAMKOT	S-NPP	30.92337	75.13666	12:59:07	D	4.40
751	MOGA	KOT ISE KHAN AT DHARAMKOT	S-NPP	30.93683	75.35117	12:59:07	D	3.00
752	MOGA	KOT ISE KHAN AT DHARAMKOT	S-NPP	30.96315	75.14574	12:59:07	D	3.00
753	MOGA	KOT ISE KHAN AT DHARAMKOT	S-NPP	30.97428	75.23746	12:59:07	D	4.80
754	MOGA	KOT ISE KHAN AT DHARAMKOT	S-NPP	30.97472	75.24052	12:59:07	D	9.10
755	MOGA	KOT ISE KHAN AT DHARAMKOT	S-NPP	30.98056	75.33270	12:59:07	D	2.40

756	MOGA	KOT ISE KHAN AT DHARAMKOT	S-NPP	30.98069	75.35530	12:59:07	D	3.40
757	MOGA	KOT ISE KHAN AT DHARAMKOT	S-NPP	30.98525	75.17982	12:59:07	D	9.80
758	MOGA	KOT ISE KHAN AT DHARAMKOT	S-NPP	30.98615	75.24863	12:59:07	D	5.20
759	MOGA	KOT ISE KHAN AT DHARAMKOT	S-NPP	30.98681	75.25098	12:59:07	D	4.60
760	MOGA	KOT ISE KHAN AT DHARAMKOT	S-NPP	30.99185	75.34071	12:59:07	D	7.00
761	MOGA	KOT ISE KHAN AT DHARAMKOT	S-NPP	31.01389	75.20029	12:59:07	D	7.20
762	MOGA	KOT ISE KHAN AT DHARAMKOT	S-NPP	31.01508	75.20570	12:59:07	D	7.20
763	MOGA	KOT ISE KHAN AT DHARAMKOT	S-NPP	31.03434	75.20579	12:59:07	D	8.60
764	MOGA	KOT ISE KHAN AT DHARAMKOT	S-NPP	31.03549	75.10110	12:59:07	D	5.70
765	MOGA	KOT ISE KHAN AT DHARAMKOT	S-NPP	31.03553	75.21119	12:59:07	D	8.60
766	MOGA	KOT ISE KHAN AT DHARAMKOT	S-NPP	31.03669	75.10658	12:59:07	D	5.70
767	MOGA	KOT ISE KHAN AT DHARAMKOT	S-NPP	31.06506	75.13184	12:59:07	D	7.90
768	MOGA	KOT ISE KHAN AT DHARAMKOT	S-NPP	31.06653	75.13266	12:59:07	D	8.00
769	MOGA	KOT ISE KHAN AT DHARAMKOT	S-NPP	31.06959	75.13049	12:59:07	D	13.20
770	MOGA	MOGA-1	S-NPP	30.71382	75.20332	12:59:07	D	5.10
771	MOGA	MOGA-1	S-NPP	30.71547	75.36426	12:59:07	D	5.50
772	MOGA	MOGA-1	S-NPP	30.71886	75.24834	12:59:07	D	9.40
773	MOGA	MOGA-1	S-NPP	30.74251	75.35640	12:59:07	D	6.30
774	MOGA	MOGA-1	S-NPP	30.77072	75.35388	12:59:07	D	3.70
775	MOGA	MOGA-1	S-NPP	30.78551	75.37801	12:59:07	D	7.20
776	MOGA	MOGA-1	S-NPP	30.78606	75.38097	12:59:07	D	5.40
777	MOGA	MOGA-1	S-NPP	30.79000	75.37669	12:59:07	D	4.40
778	MOGA	MOGA-1	S-NPP	30.79268	75.36770	12:59:07	D	3.90
779	MOGA	MOGA-1	S-NPP	30.79335	75.37003	12:59:07	D	4.40
780	MOGA	MOGA-1	S-NPP	30.80758	75.39171	12:59:07	D	13.80
781	MOGA	MOGA-1	S-NPP	30.80807	75.39410	12:59:07	D	24.30
782	MOGA	MOGA-1	S-NPP	30.80854	75.26585	12:59:07	D	5.40
783	MOGA	MOGA-1	S-NPP	30.80854	75.37443	12:59:07	D	13.70
784	MOGA	MOGA-1	S-NPP	30.84647	75.19691	12:59:07	D	11.20
785	MOGA	MOGA-1	S-NPP	30.85575	75.21738	12:59:07	D	3.60
786	MOGA	MOGA-1	S-NPP	30.85833	75.21388	12:59:07	D	6.10
787	MOGA	MOGA-2	S-NPP	30.74529	75.00281	12:59:07	D	12.10
788	MOGA	MOGA-2	S-NPP	30.75239	75.01266	12:59:07	D	11.10

789	MOGA	MOGA-2	S-NPP	30.75699	75.01131	12:59:07	D	11.10
790	MOGA	MOGA-2	S-NPP	30.76618	75.00860	12:59:07	D	4.20
791	MOGA	MOGA-2	S-NPP	30.77374	74.97641	12:59:07	D	6.20
792	MOGA	MOGA-2	S-NPP	30.77908	75.02268	12:59:07	D	24.80
793	MOGA	MOGA-2	S-NPP	30.78032	75.02828	12:59:07	D	49.10
794	MOGA	MOGA-2	S-NPP	30.78367	75.02134	12:59:07	D	5.40
795	MOGA	MOGA-2	S-NPP	30.79325	75.13084	12:59:07	D	4.10
796	MOGA	MOGA-2	S-NPP	30.79564	75.05347	12:59:07	D	8.10
797	MOGA	MOGA-2	S-NPP	30.81912	74.99628	12:59:07	D	10.70
798	MOGA	MOGA-2	S-NPP	30.82128	74.99222	12:59:07	D	13.30
799	MOGA	MOGA-2	S-NPP	30.82254	75.05476	12:59:07	D	9.70
800	MOGA	MOGA-2	S-NPP	30.83954	75.07601	12:59:07	D	3.10
801	MOGA	MOGA-2	S-NPP	30.84075	75.08157	12:59:07	D	6.00
802	MOGA	MOGA-2	S-NPP	30.84249	75.07842	12:59:07	D	7.50
803	MOGA	MOGA-2	S-NPP	30.88499	75.00663	12:59:07	D	11.90
804	MOGA	NIHAL SINGH	S-NPP	30.53805	75.37940	12:59:07	D	15.40
805	MOGA	NIHAL SINGH	S-NPP	30.55628	75.39700	12:59:07	D	8.00
806	MOGA	NIHAL SINGH	S-NPP	30.56469	75.24213	12:59:07	D	3.80
807	MOGA	NIHAL SINGH	S-NPP	30.56575	75.28482	12:59:07	D	8.40
808	MOGA	NIHAL SINGH	S-NPP	30.56858	75.36814	12:59:07	D	4.40
809	MOGA	NIHAL SINGH	S-NPP	30.56970	75.37022	12:59:07	D	3.70
810	MOGA	NIHAL SINGH	S-NPP	30.57097	75.37891	12:59:07	D	9.30
811	MOGA	NIHAL SINGH	S-NPP	30.57203	75.38100	12:59:07	D	21.30
812	MOGA	NIHAL SINGH	S-NPP	30.57217	75.38427	12:59:07	D	14.00
813	MOGA	NIHAL SINGH	S-NPP	30.60085	75.20826	12:59:07	D	6.40
814	MOGA	NIHAL SINGH	S-NPP	30.60206	75.21375	12:59:07	D	12.20
815	MOGA	NIHAL SINGH	S-NPP	30.60858	75.28748	12:59:07	D	2.90
816	MOGA	NIHAL SINGH	S-NPP	30.61623	75.25626	12:59:07	D	8.80
817	MOGA	NIHAL SINGH	S-NPP	30.62077	75.25493	12:59:07	D	8.80
818	MOGA	NIHAL SINGH	S-NPP	30.63127	75.28087	12:59:07	D	15.90
819	MOGA	NIHAL SINGH	S-NPP	30.63955	75.31884	12:59:07	D	10.00
820	MOGA	NIHAL SINGH	S-NPP	30.65463	75.36609	12:59:07	D	8.40
821	MOGA	NIHAL SINGH	S-NPP	30.65681	75.35400	12:59:07	D	8.50

822	MOGA	NIHAL SINGH	S-NPP	30.71073	75.23331	12:59:07	D	6.90
823	MOGA	NIHAL SINGH	S-NPP	30.71767	75.24290	12:59:07	D	9.40
824	MUKTSAR	KOT BHAI AT GIDDERBAHA	S-NPP	30.21929	74.59408	12:59:07	D	7.90
825	MUKTSAR	KOT BHAI AT GIDDERBAHA	S-NPP	30.22815	74.61077	12:59:07	D	13.80
826	MUKTSAR	KOT BHAI AT GIDDERBAHA	S-NPP	30.22952	74.61681	12:59:07	D	12.60
827	MUKTSAR	KOT BHAI AT GIDDERBAHA	S-NPP	30.26213	74.53603	12:59:07	D	4.00
828	MUKTSAR	KOT BHAI AT GIDDERBAHA	S-NPP	30.29191	74.62401	12:59:07	D	5.90
829	MUKTSAR	KOT BHAI AT GIDDERBAHA	S-NPP	30.29453	74.62107	12:59:07	D	6.80
830	MUKTSAR	KOT BHAI AT GIDDERBAHA	S-NPP	30.29543	74.57145	12:59:07	D	8.30
831	MUKTSAR	KOT BHAI AT GIDDERBAHA	S-NPP	30.29775	74.56869	12:59:07	D	7.20
832	MUKTSAR	KOT BHAI AT GIDDERBAHA	S-NPP	30.33253	74.69901	12:59:07	D	4.00
833	MUKTSAR	KOT BHAI AT GIDDERBAHA	S-NPP	30.36353	74.70251	12:59:07	D	3.60
834	MUKTSAR	KOT BHAI AT GIDDERBAHA	S-NPP	30.36704	74.60600	12:59:07	D	7.40
835	MUKTSAR	KOT BHAI AT GIDDERBAHA	S-NPP	30.38621	74.75877	12:59:07	D	6.10
836	MUKTSAR	KOT BHAI AT GIDDERBAHA	S-NPP	30.41615	74.66784	12:59:07	D	17.20
837	MUKTSAR	KOT BHAI AT GIDDERBAHA	S-NPP	30.41976	74.66495	12:59:07	D	4.40
838	MUKTSAR	KOT BHAI AT GIDDERBAHA	S-NPP	30.44602	74.71400	12:59:07	D	10.90
839	MUKTSAR	KOT BHAI AT GIDDERBAHA	S-NPP	30.44807	74.65657	12:59:07	D	8.20
840	MUKTSAR	LAMBI	AQUA	30.07100	74.59400	13:12:04	D	58.40
841	MUKTSAR	LAMBI	AQUA	30.07500	74.58900	13:12:04	D	70.10
842	MUKTSAR	LAMBI	S-NPP	29.98351	74.56895	12:59:07	D	5.70
843	MUKTSAR	LAMBI	S-NPP	29.98423	74.43680	12:59:07	D	10.20
844	MUKTSAR	LAMBI	S-NPP	30.03696	74.62473	12:59:07	D	6.20
845	MUKTSAR	LAMBI	S-NPP	30.05536	74.50170	12:59:07	D	13.70
846	MUKTSAR	LAMBI	S-NPP	30.05697	74.50068	12:59:07	D	10.80
847	MUKTSAR	LAMBI	S-NPP	30.08143	74.58499	12:59:07	D	17.00
848	MUKTSAR	LAMBI	S-NPP	30.10019	74.48786	12:59:07	D	3.40
849	MUKTSAR	LAMBI	S-NPP	30.10499	74.48643	12:59:07	D	6.40
850	MUKTSAR	MALOUT	S-NPP	30.18378	74.54158	12:59:07	D	6.50
851	MUKTSAR	MALOUT	S-NPP	30.18637	74.53902	12:59:07	D	8.50
852	MUKTSAR	MALOUT	S-NPP	30.25459	74.47954	12:59:07	D	5.30
853	MUKTSAR	MALOUT	S-NPP	30.26340	74.40450	12:59:07	D	8.70
854	MUKTSAR	MALOUT	S-NPP	30.26466	74.40218	12:59:07	D	20.10

855	MUKTSAR	MALOUT	S-NPP	30.30733	74.40925	12:59:07	D	6.80
856	MUKTSAR	MALOUT	S-NPP	30.34446	74.43761	12:59:07	D	10.70
857	MUKTSAR	MALOUT	S-NPP	30.34925	74.43619	12:59:07	D	10.70
858	MUKTSAR	MUKTSAR	S-NPP	30.36300	74.54284	12:59:07	D	5.60
859	MUKTSAR	MUKTSAR	S-NPP	30.37193	74.43431	12:59:07	D	5.90
860	MUKTSAR	MUKTSAR	S-NPP	30.37456	74.43516	12:59:07	D	4.00
861	MUKTSAR	MUKTSAR	S-NPP	30.43051	74.62365	12:59:07	D	12.90
862	MUKTSAR	MUKTSAR	S-NPP	30.46892	74.68202	12:59:07	D	10.40
863	MUKTSAR	MUKTSAR	S-NPP	30.47496	74.68653	12:59:07	D	10.40
864	MUKTSAR	MUKTSAR	S-NPP	30.49691	74.51403	12:59:07	D	5.20
865	MUKTSAR	MUKTSAR	S-NPP	30.49936	74.51285	12:59:07	D	7.70
866	MUKTSAR	MUKTSAR	S-NPP	30.53386	74.46366	12:59:07	D	8.20
867	MUKTSAR	MUKTSAR	S-NPP	30.54217	74.67282	12:59:07	D	6.50
868	MUKTSAR	MUKTSAR	S-NPP	30.55640	74.54080	12:59:07	D	6.90
869	MUKTSAR	MUKTSAR	S-NPP	30.57092	74.41162	12:59:07	D	5.50
870	MUKTSAR	MUKTSAR	S-NPP	30.57327	74.41271	12:59:07	D	11.70
871	MUKTSAR	MUKTSAR	S-NPP	30.57568	74.41018	12:59:07	D	6.50
872	MUKTSAR	MUKTSAR	S-NPP	30.63071	74.56140	12:59:07	D	4.00
873	MUKTSAR	MUKTSAR	S-NPP	30.63543	74.55997	12:59:07	D	4.00
874	MUKTSAR	MUKTSAR	S-NPP	30.65493	74.49007	12:59:07	D	8.70
875	PATHANKOT	BAMIAL	S-NPP	32.31181	75.40998	12:59:07	D	5.10
876	PATHANKOT	NAROT JAIMAL SINGH	S-NPP	32.20269	75.43471	12:59:07	D	9.70
877	PATHANKOT	NAROT JAIMAL SINGH	S-NPP	32.28249	75.40263	12:59:07	D	11.70
878	PATHANKOT	NAROT JAIMAL SINGH	S-NPP	32.30420	75.43896	12:59:07	D	29.20
879	PATHANKOT	NAROT JAIMAL SINGH	S-NPP	32.30527	75.44397	12:59:07	D	29.20
880	PATHANKOT	PATHANKOT	S-NPP	32.11071	75.60644	12:59:07	D	6.50
881	PATIALA	BHUNARHERI	S-NPP	30.14356	76.55256	12:59:07	D	3.60
882	PATIALA	BHUNARHERI	S-NPP	30.15307	76.55490	12:59:07	D	3.90
883	PATIALA	BHUNARHERI	S-NPP	30.16218	76.57719	12:59:07	D	11.40
884	PATIALA	GHANAUR	S-NPP	30.39896	76.59895	12:59:07	D	5.20
885	PATIALA	GHANAUR	S-NPP	30.41290	76.67442	12:59:07	D	2.90
886	PATIALA	NABHA	S-NPP	30.31398	76.23245	12:59:07	D	13.00
887	PATIALA	NABHA	S-NPP	30.38816	76.25803	12:59:07	D	5.40



888	PATIALA	NABHA	S-NPP	30.43263	76.25375	12:59:07	D	5.70
889	PATIALA	NABHA	S-NPP	30.43336	76.25567	12:59:07	D	5.20
890	PATIALA	NABHA	S-NPP	30.46077	76.23566	12:59:07	D	14.70
891	PATIALA	NABHA	S-NPP	30.48359	76.10527	12:59:07	D	5.50
892	PATIALA	PATIALA	AQUA	30.38100	76.44600	13:12:04	D	70.40
893	PATIALA	PATIALA	AQUA	30.38200	76.43800	13:12:04	D	46.30
894	PATIALA	PATIALA	S-NPP	30.24682	76.21831	12:59:07	D	10.60
895	PATIALA	PATIALA	S-NPP	30.38188	76.33620	12:59:07	D	15.00
896	PATIALA	PATIALA	S-NPP	30.38362	76.45139	12:59:07	D	13.20
897	PATIALA	PATIALA	S-NPP	30.38789	76.45021	12:59:07	D	10.50
898	PATIALA	PATRAN	S-NPP	29.93782	76.15665	12:59:07	D	9.40
899	PATIALA	PATRAN	S-NPP	29.98127	76.08878	12:59:07	D	5.60
900	PATIALA	PATRAN	S-NPP	29.99903	76.04115	12:59:07	D	8.30
901	PATIALA	PATRAN	S-NPP	30.00012	76.04620	12:59:07	D	17.10
902	PATIALA	PATRAN	S-NPP	30.01715	76.14759	12:59:07	D	8.60
903	PATIALA	RAJPURA	S-NPP	30.50896	76.68675	12:59:07	D	1.40
904	PATIALA	RAJPURA	S-NPP	30.52944	76.64486	12:59:07	D	7.10
905	PATIALA	SAMANA	S-NPP	30.08861	76.20111	12:59:07	D	16.10
906	PATIALA	SAMANA	S-NPP	30.18688	76.21242	12:59:07	D	4.60
907	PATIALA	SAMANA	S-NPP	30.19495	76.19125	12:59:07	D	5.20
908	PATIALA	SAMANA	S-NPP	30.19582	76.18912	12:59:07	D	3.90
909	PATIALA	SAMANA	S-NPP	30.21803	76.14835	12:59:07	D	7.40
910	PATIALA	SAMANA	S-NPP	30.23328	76.28386	12:59:07	D	7.40
911	PATIALA	SANAUR	S-NPP	30.15254	76.28914	12:59:07	D	8.10
912	PATIALA	SANAUR	S-NPP	30.17731	76.38441	12:59:07	D	6.50
913	PATIALA	SANAUR	S-NPP	30.21088	76.28317	12:59:07	D	8.00
914	PATIALA	SANAUR	S-NPP	30.25735	76.35377	12:59:07	D	16.20
915	PATIALA	SANAUR	S-NPP	30.29274	76.43487	12:59:07	D	8.20
916	PATIALA	SHAMBU KALAN	S-NPP	30.43834	76.60423	12:59:07	D	7.90
917	PATIALA	SHAMBU KALAN	S-NPP	30.44257	76.60306	12:59:07	D	7.90
918	PATIALA	SHAMBU KALAN	S-NPP	30.44727	76.51823	12:59:07	D	6.60
919	PATIALA	SHAMBU KALAN	S-NPP	30.48647	76.66393	12:59:07	D	5.90
920	PATIALA	SHAMBU KALAN	S-NPP	30.48741	76.66852	12:59:07	D	7.60

921	RUPNAGAR	CHAMKAUR SAHIB	S-NPP	30.93710	76.39221	12:59:07	D	3.10
922	RUPNAGAR	CHAMKAUR SAHIB	S-NPP	30.95568	76.41657	12:59:07	D	3.40
923	SANGRUR	ANDANA	S-NPP	29.84212	76.04613	12:59:07	D	5.20
924	SANGRUR	ANDANA	S-NPP	29.84263	76.06077	12:59:07	D	6.60
925	SANGRUR	ANDANA	S-NPP	29.84563	76.01822	12:59:07	D	20.40
926	SANGRUR	BHAWANIGARH	AQUA	30.29100	76.10900	13:12:04	D	46.20
927	SANGRUR	BHAWANIGARH	S-NPP	30.15499	75.99467	12:59:07	D	13.30
928	SANGRUR	BHAWANIGARH	S-NPP	30.25203	76.11266	12:59:07	D	5.40
929	SANGRUR	BHAWANIGARH	S-NPP	30.25413	76.12256	12:59:07	D	4.20
930	SANGRUR	BHAWANIGARH	S-NPP	30.27410	76.19515	12:59:07	D	5.00
931	SANGRUR	BHAWANIGARH	S-NPP	30.29953	76.10145	12:59:07	D	3.90
932	SANGRUR	BHAWANIGARH	S-NPP	30.30539	75.99948	12:59:07	D	21.70
933	SANGRUR	DHURI	S-NPP	30.34620	75.95068	12:59:07	D	8.00
934	SANGRUR	DHURI	S-NPP	30.34774	75.86239	12:59:07	D	6.00
935	SANGRUR	DHURI	S-NPP	30.36756	75.78074	12:59:07	D	9.00
936	SANGRUR	DIRBA	S-NPP	30.06040	76.06664	12:59:07	D	12.30
937	SANGRUR	DIRBA	S-NPP	30.15058	75.99591	12:59:07	D	5.00
938	SANGRUR	LEHRA GAGA	S-NPP	29.89380	75.92755	12:59:07	D	6.80
939	SANGRUR	MALERKOTLA-1	S-NPP	30.38289	76.00226	12:59:07	D	5.70
940	SANGRUR	MALERKOTLA-1	S-NPP	30.43351	75.93482	12:59:07	D	4.30
941	SANGRUR	MALERKOTLA-1	S-NPP	30.44285	75.80292	12:59:07	D	6.20
942	SANGRUR	MALERKOTLA-1	S-NPP	30.46759	75.91982	12:59:07	D	8.70
943	SANGRUR	MALERKOTLA-1	S-NPP	30.49392	75.89878	12:59:07	D	11.10
944	SANGRUR	MALERKOTLA-1	S-NPP	30.49500	75.90382	12:59:07	D	11.10
945	SANGRUR	MALERKOTLA-1	S-NPP	30.52865	75.99523	12:59:07	D	9.20
946	SANGRUR	MALERKOTLA-2	AQUA	30.59600	75.74000	13:12:04	D	69.50
947	SANGRUR	MALERKOTLA-2	AQUA	30.59900	75.74700	13:12:04	D	54.50
948	SANGRUR	MALERKOTLA-2	S-NPP	30.57338	75.80325	12:59:07	D	11.80
949	SANGRUR	MALERKOTLA-2	S-NPP	30.57878	75.69833	12:59:07	D	3.10
950	SANGRUR	MALERKOTLA-2	S-NPP	30.60317	75.68035	12:59:07	D	5.40
951	SANGRUR	MALERKOTLA-2	S-NPP	30.60649	75.76131	12:59:07	D	60.10
952	SANGRUR	MALERKOTLA-2	S-NPP	30.61091	75.76006	12:59:07	D	60.10
953	SANGRUR	MALERKOTLA-2	S-NPP	30.61533	75.75879	12:59:07	D	11.70

954	SANGRUR	SANGRUR	S-NPP	30.16348	75.61031	12:59:07	D	7.50
955	SANGRUR	SANGRUR	S-NPP	30.17140	75.62494	12:59:07	D	9.10
956	SANGRUR	SANGRUR	S-NPP	30.17254	75.63023	12:59:07	D	17.50
957	SANGRUR	SANGRUR	S-NPP	30.17476	75.61835	12:59:07	D	8.70
958	SANGRUR	SANGRUR	S-NPP	30.29030	75.86422	12:59:07	D	17.10
959	SANGRUR	SHER PUR	S-NPP	30.37967	75.68383	12:59:07	D	8.00
960	SANGRUR	SHER PUR	S-NPP	30.43945	75.69162	12:59:07	D	5.10
961	SANGRUR	SHER PUR	S-NPP	30.44293	75.72913	12:59:07	D	6.20
962	SANGRUR	SHER PUR	S-NPP	30.44425	75.79968	12:59:07	D	5.40
963	SANGRUR	SHER PUR	S-NPP	30.50512	75.71136	12:59:07	D	6.70
964	SANGRUR	SHER PUR	S-NPP	30.53840	75.71281	12:59:07	D	6.90
965	SBS NAGAR	AUR	S-NPP	31.05927	76.08506	12:59:07	D	2.20
966	SBS NAGAR	AUR	S-NPP	31.13257	75.93511	12:59:07	D	2.70
967	SBS NAGAR	BALACHAUR	S-NPP	31.08912	76.27200	12:59:07	D	6.50
968	SBS NAGAR	BALACHAUR	S-NPP	31.09064	76.27312	12:59:07	D	8.10
969	SBS NAGAR	BANGA	S-NPP	31.15733	76.03145	12:59:07	D	3.40
970	SBS NAGAR	BANGA	S-NPP	31.15834	76.03320	12:59:07	D	6.70
971	SBS NAGAR	BANGA	S-NPP	31.15834	76.03629	12:59:07	D	6.60
972	SBS NAGAR	BANGA	S-NPP	31.18985	75.81604	12:59:07	D	3.20
973	SBS NAGAR	BANGA	S-NPP	31.19420	75.81479	12:59:07	D	10.90
974	SBS NAGAR	NAWAN SHAHR	S-NPP	31.06520	76.24369	12:59:07	D	13.90
975	SBS NAGAR	NAWAN SHAHR	S-NPP	31.11056	76.19731	12:59:07	D	7.00
976	TARN TARAN	BHIKHIWIND	S-NPP	31.26134	74.67523	12:59:07	D	9.80
977	TARN TARAN	BHIKHIWIND	S-NPP	31.30497	74.59808	12:59:07	D	6.00
978	TARN TARAN	BHIKHIWIND	S-NPP	31.33349	74.72413	12:59:07	D	3.40
979	TARN TARAN	BHIKHIWIND	S-NPP	31.35543	74.77797	12:59:07	D	5.10
980	TARN TARAN	BHIKHIWIND	S-NPP	31.38869	74.64043	12:59:07	D	12.20
981	TARN TARAN	BHIKHIWIND	S-NPP	31.38910	74.63763	12:59:07	D	5.70
982	TARN TARAN	BHIKHIWIND	S-NPP	31.38997	74.64616	12:59:07	D	12.20
983	TARN TARAN	BHIKHIWIND	S-NPP	31.39041	74.64336	12:59:07	D	17.90
984	TARN TARAN	CHOHLA SAHIB	S-NPP	31.20923	75.02266	12:59:07	D	12.70
985	TARN TARAN	CHOHLA SAHIB	S-NPP	31.21893	74.97877	12:59:07	D	50.10
986	TARN TARAN	CHOHLA SAHIB	S-NPP	31.23352	74.95673	12:59:07	D	20.00

987	TARN TARAN	CHOHLA SAHIB	S-NPP	31.23411	75.00366	12:59:07	D	3.30
988	TARN TARAN	CHOHLA SAHIB	S-NPP	31.23560	75.03249	12:59:07	D	2.40
989	TARN TARAN	CHOHLA SAHIB	S-NPP	31.23745	74.99678	12:59:07	D	3.00
990	TARN TARAN	CHOHLA SAHIB	S-NPP	31.23866	75.00230	12:59:07	D	4.30
991	TARN TARAN	CHOHLA SAHIB	S-NPP	31.24886	74.99069	12:59:07	D	12.40
992	TARN TARAN	CHOHLA SAHIB	S-NPP	31.25016	75.01060	12:59:07	D	4.10
993	TARN TARAN	CHOHLA SAHIB	S-NPP	31.28562	75.00326	12:59:07	D	8.30
994	TARN TARAN	CHOHLA SAHIB	S-NPP	31.29715	75.01154	12:59:07	D	17.10
995	TARN TARAN	CHOHLA SAHIB	S-NPP	31.31710	74.97045	12:59:07	D	8.40
996	TARN TARAN	CHOHLA SAHIB	S-NPP	31.34669	75.06087	12:59:07	D	5.20
997	TARN TARAN	GANDIWIND TATLA	S-NPP	31.48427	74.68814	12:59:07	D	9.90
998	TARN TARAN	GANDIWIND TATLA	S-NPP	31.48554	74.69383	12:59:07	D	9.90
999	TARN TARAN	GANDIWIND TATLA	S-NPP	31.48807	74.70518	12:59:07	D	13.10
1000	TARN TARAN	GANDIWIND TATLA	S-NPP	31.49266	74.70380	12:59:07	D	8.10
1001	TARN TARAN	GANDIWIND TATLA	S-NPP	31.53760	74.65295	12:59:07	D	4.60
1002	TARN TARAN	KHADUR SAHIB	AQUA	31.45200	75.04100	13:12:04	D	44.10
1003	TARN TARAN	KHADUR SAHIB	S-NPP	31.49424	75.08055	12:59:07	D	5.60
1004	TARN TARAN	NAUSHERA PANNUAN	S-NPP	31.32741	74.97325	12:59:07	D	18.30
1005	TARN TARAN	PATTI	S-NPP	31.20769	74.83929	12:59:07	D	2.40
1006	TARN TARAN	PATTI	S-NPP	31.26703	74.78899	12:59:07	D	4.60
1007	TARN TARAN	PATTI	S-NPP	31.34024	74.88410	12:59:07	D	8.00
1008	TARN TARAN	PATTI	S-NPP	31.34226	74.88612	12:59:07	D	5.80
1009	TARN TARAN	TARN TARAN	S-NPP	31.46898	74.79510	12:59:07	D	3.80
1010	TARN TARAN	TARN TARAN	S-NPP	31.48438	74.82031	12:59:07	D	15.90
1011	TARN TARAN	TARN TARAN	S-NPP	31.48563	74.82589	12:59:07	D	15.90
1012	TARN TARAN	TARN TARAN	S-NPP	31.48871	75.01294	12:59:07	D	3.00
1013	TARN TARAN	TARN TARAN	S-NPP	31.48936	74.84260	12:59:07	D	4.20
1014	TARN TARAN	TARN TARAN	S-NPP	31.49041	75.01534	12:59:07	D	4.50
1015	TARN TARAN	TARN TARAN	S-NPP	31.49060	74.84816	12:59:07	D	4.20
1016	TARN TARAN	TARN TARAN	S-NPP	31.51341	74.84132	12:59:07	D	3.50
1017	TARN TARAN	VALTOHA	S-NPP	31.14043	74.60294	12:59:07	D	8.90
1018	TARN TARAN	VALTOHA	S-NPP	31.14867	74.55056	12:59:07	D	4.20
1019	TARN TARAN	VALTOHA	S-NPP	31.24477	74.55661	12:59:07	D	3.60

### Details of residue burning events in Haryana on 10-May-2023

S. No.	District	Tehsil / Block	Satellite	Latitude	Longitude	ACQ_TIME	Day / Night	Fire Power (W/m2)
1	AMBALA	AMBALA-II	S-NPP	30.10481	76.58305	12:59:07	D	3.20
2	AMBALA	AMBALA-II	S-NPP	30.21676	76.65741	12:59:07	D	12.10
3	AMBALA	AMBALA-II	S-NPP	30.32304	76.78324	12:59:07	D	6.40
4	AMBALA	AMBALA-II	S-NPP	30.32591	76.78362	12:59:07	D	14.00
5	AMBALA	BARARA	S-NPP	30.18651	77.01772	12:59:07	D	5.00
6	AMBALA	BARARA	S-NPP	30.22802	77.11322	12:59:07	D	2.20
7	BHIWANI	BAWANI KHERA	S-NPP	28.98139	75.98693	12:59:07	D	5.20
8	CHARKHI DADRI	DADRI-I	S-NPP	28.63204	76.26880	12:59:07	D	10.90
9	FATEHABAD	FATEHABAD	S-NPP	29.52624	75.48638	12:59:07	D	8.30
10	FATEHABAD	JAKHAL	S-NPP	29.80183	75.74335	12:59:07	D	4.20
11	FATEHABAD	JAKHAL	S-NPP	29.81102	75.78545	12:59:07	D	9.90
12	FATEHABAD	RATIA	S-NPP	29.71723	75.66090	12:59:07	D	4.20
13	FATEHABAD	TOHANA	S-NPP	29.65162	75.69077	12:59:07	D	4.60
14	FATEHABAD	TOHANA	S-NPP	29.65343	75.69292	12:59:07	D	5.60
15	FATEHABAD	TOHANA	S-NPP	29.76166	75.86703	12:59:07	D	6.60
16	HISAR	HANSI-I	S-NPP	29.27965	75.93183	12:59:07	D	6.60
17	HISAR	HANSI-I	S-NPP	29.27994	75.93399	12:59:07	D	5.80
18	HISAR	HANSI-II	S-NPP	29.07852	76.21858	12:59:07	D	15.50
19	HISAR	HANSI-II	S-NPP	29.07866	76.10641	12:59:07	D	4.80
20	JHAJJAR	BERI	S-NPP	28.68884	76.53691	12:59:07	D	5.60
21	JHAJJAR	BERI	S-NPP	28.71007	76.68184	12:59:07	D	5.40
22	JIND	ALEWA	S-NPP	29.45770	76.37016	12:59:07	D	5.40
23	JIND	JULANA	S-NPP	29.18619	76.30788	01:49:07	N	0.80
24	JIND	JULANA	S-NPP	29.22258	76.38363	12:59:07	D	4.20
25	JIND	JULANA	S-NPP	29.22697	76.38243	12:59:07	D	4.20
26	JIND	NARWANA	S-NPP	29.76546	76.19006	12:59:07	D	2.90
27	JIND	SAFIDON	S-NPP	29.39631	76.66714	12:59:07	D	5.10
28	JIND	SAFIDON	S-NPP	29.44306	76.58512	12:59:07	D	8.20
29	JIND	UCHANA	S-NPP	29.46643	76.08941	12:59:07	D	3.00
30	KAITHAL	KAITHAL	S-NPP	29.74945	76.51819	12:59:07	D	11.40

31	KAITHAL	KAITHAL	S-NPP	29.76294	76.38685	12:59:07	D	4.10
32	KAITHAL	KAITHAL	S-NPP	29.76728	76.38566	12:59:07	D	4.10
33	KAITHAL	KALAYAT	S-NPP	29.63956	76.36697	12:59:07	D	6.30
34	KAITHAL	KALAYAT	S-NPP	29.64060	76.37187	12:59:07	D	6.30
35	KAITHAL	KALAYAT	S-NPP	29.68110	76.30565	12:59:07	D	6.70
36	KAITHAL	KALAYAT	S-NPP	29.73211	76.32807	12:59:07	D	8.90
37	KAITHAL	PUNDRI	S-NPP	29.78241	76.60974	12:59:07	D	3.90
38	KAITHAL	PUNDRI	S-NPP	29.80831	76.71181	12:59:07	D	3.90
39	KAITHAL	PUNDRI	S-NPP	29.83017	76.62166	12:59:07	D	7.60
40	KAITHAL	PUNDRI	S-NPP	29.83445	76.62048	12:59:07	D	7.60
41	KAITHAL	PUNDRI	S-NPP	29.87215	76.58195	12:59:07	D	6.50
42	KAITHAL	PUNDRI	S-NPP	29.87781	76.63023	12:59:07	D	7.30
43	KAITHAL	PUNDRI	S-NPP	29.87880	76.63492	12:59:07	D	7.30
44	KAITHAL	SIWAN	S-NPP	29.92213	76.34341	12:59:07	D	8.00
45	KARNAL	ASSANDH	S-NPP	29.53102	76.60961	12:59:07	D	4.40
46	KARNAL	ASSANDH	S-NPP	29.61990	76.55513	12:59:07	D	11.90
47	KARNAL	ASSANDH	S-NPP	29.62017	76.55660	12:59:07	D	10.70
48	KARNAL	ASSANDH	S-NPP	29.64009	76.67517	12:59:07	D	6.00
49	KARNAL	CHIRAO	S-NPP	29.72513	76.84029	12:59:07	D	7.20
50	KARNAL	GHARAUNDA	S-NPP	29.54862	76.91808	12:59:07	D	7.80
51	KARNAL	INDRI	S-NPP	29.87281	77.17136	12:59:07	D	1.40
52	KARNAL	KARNAL	S-NPP	29.69845	77.04762	12:59:07	D	2.60
53	KARNAL	KARNAL	S-NPP	29.75204	77.03420	12:59:07	D	3.60
54	KARNAL	KARNAL	S-NPP	29.78096	77.00283	12:59:07	D	21.10
55	KARNAL	NILOKHERI	S-NPP	29.78852	76.81010	12:59:07	D	6.10
56	KARNAL	NILOKHERI	S-NPP	29.79010	76.80812	12:59:07	D	4.80
57	KARNAL	NILOKHERI	S-NPP	29.79275	76.80894	12:59:07	D	6.10
58	KARNAL	NILOKHERI	S-NPP	29.85847	76.69322	12:59:07	D	10.40
59	KARNAL	NILOKHERI	S-NPP	29.87374	76.94116	12:59:07	D	4.10
60	KURUKSHETRA	BABAIN	S-NPP	30.10698	77.03319	12:59:07	D	5.40
61	KURUKSHETRA	BABAIN	S-NPP	30.11512	77.07294	12:59:07	D	2.60
62	KURUKSHETRA	BABAIN	S-NPP	30.14678	76.99567	12:59:07	D	5.60
63	KURUKSHETRA	BABAIN	S-NPP	30.14734	76.99419	12:59:07	D	7.50

64	KURUKSHETRA	ISMAILABAD	S-NPP	30.10639	76.67618	12:59:07	D	4.40
65	KURUKSHETRA	PEHOWA	S-NPP	30.01400	76.67025	12:59:07	D	6.30
66	KURUKSHETRA	SHAHBAD	S-NPP	30.20535	76.80906	12:59:07	D	3.50
67	KURUKSHETRA	THANESAR	S-NPP	29.95185	76.74777	12:59:07	D	6.10
68	KURUKSHETRA	THANESAR	S-NPP	30.02503	76.70155	12:59:07	D	3.50
69	PANCHKULA	BARWALA	S-NPP	30.63745	76.95222	12:59:07	D	3.80
70	PANIPAT	ISRANA	S-NPP	29.25019	76.81960	12:59:07	D	6.00
71	PANIPAT	ISRANA	S-NPP	29.33096	76.65966	12:59:07	D	8.50
72	PANIPAT	MADLAUDA	S-NPP	29.33969	76.81535	12:59:07	D	9.70
73	PANIPAT	MADLAUDA	S-NPP	29.34059	76.66209	12:59:07	D	10.30
74	PANIPAT	MADLAUDA	S-NPP	29.34397	76.81419	12:59:07	D	9.70
75	PANIPAT	MADLAUDA	S-NPP	29.36517	76.73560	12:59:07	D	4.40
76	PANIPAT	MADLAUDA	S-NPP	29.37199	76.83279	12:59:07	D	12.20
77	PANIPAT	MADLAUDA	S-NPP	29.39838	76.78625	12:59:07	D	3.70
78	PANIPAT	MADLAUDA	S-NPP	29.40791	76.78864	12:59:07	D	9.40
79	PANIPAT	SAMALKHA	S-NPP	29.21449	77.08572	12:59:07	D	5.80
80	PANIPAT	SANAULI KHURD	S-NPP	29.34952	77.12295	01:49:07	N	0.80
81	PANIPAT	SANAULI KHURD	S-NPP	29.43668	77.10019	12:59:07	D	5.60
82	ROHTAK	KALANAUR	S-NPP	28.74443	76.50309	12:59:07	D	7.90
83	ROHTAK	KALANAUR	S-NPP	28.75921	76.44106	12:59:07	D	6.10
84	ROHTAK	KALANAUR	S-NPP	28.83348	76.49199	12:59:07	D	5.30
85	ROHTAK	KALANAUR	S-NPP	28.83568	76.49423	12:59:07	D	4.20
86	ROHTAK	LAKHAN MAJRA	S-NPP	29.04331	76.50665	12:59:07	D	7.20
87	ROHTAK	MEHAM	S-NPP	28.90264	76.37815	12:59:07	D	7.90
88	ROHTAK	MEHAM	S-NPP	28.90427	76.31895	12:59:07	D	7.20
89	ROHTAK	MEHAM	S-NPP	28.90507	76.31712	12:59:07	D	7.60
90	ROHTAK	ROHTAK	S-NPP	28.96673	76.66312	12:59:07	D	5.30
91	ROHTAK	ROHTAK	S-NPP	28.97945	76.66290	12:59:07	D	9.00
92	ROHTAK	ROHTAK	S-NPP	29.04887	76.57760	12:59:07	D	6.10
93	SIRSA	BARAGUNDA	S-NPP	29.62934	75.09969	12:59:07	D	7.80
94	SIRSA	BARAGUNDA	S-NPP	29.62939	75.09927	12:59:07	D	9.70
95	SIRSA	BARAGUNDA	S-NPP	29.67765	75.15898	12:59:07	D	14.80
96	SIRSA	DABWALI	S-NPP	29.88156	74.67255	12:59:07	D	11.70

97	SIRSA	DABWALI	S-NPP	29.95221	74.80553	12:59:07	D	11.50
98	SIRSA	DABWALI	S-NPP	29.96491	74.83973	12:59:07	D	12.00
99	SIRSA	DABWALI	S-NPP	29.96963	74.83834	12:59:07	D	12.00
100	SIRSA	ODHAN	S-NPP	29.77589	74.93061	12:59:07	D	5.70
101	SIRSA	ODHAN	S-NPP	29.88841	74.96468	12:59:07	D	6.70
102	SIRSA	RANIA	S-NPP	29.55054	74.77512	12:59:07	D	8.30
103	SIRSA	RANIA	S-NPP	29.55676	74.62310	12:59:07	D	7.60
104	SONIPAT	GANAUR	S-NPP	29.09301	76.98624	12:59:07	D	4.70
105	SONIPAT	GANAUR	S-NPP	29.20819	76.94746	12:59:07	D	9.10
106	SONIPAT	GANAUR	S-NPP	29.21289	76.92670	12:59:07	D	7.10
107	SONIPAT	GOHANA	S-NPP	29.08591	76.75580	12:59:07	D	7.90
108	SONIPAT	GOHANA	S-NPP	29.13496	76.81760	12:59:07	D	5.30
109	SONIPAT	GOHANA	S-NPP	29.13621	76.81910	12:59:07	D	4.00
110	SONIPAT	KHARKHODA	S-NPP	28.82892	76.87955	12:59:07	D	4.10
111	SONIPAT	KHARKHODA	S-NPP	28.94128	76.95537	12:59:07	D	8.10
112	SONIPAT	MUNDLANA	S-NPP	29.21019	76.69411	12:59:07	D	7.00
113	SONIPAT	MUNDLANA	S-NPP	29.21028	76.69555	12:59:07	D	7.30
114	SONIPAT	MUNDLANA	S-NPP	29.23374	76.63367	12:59:07	D	11.20
115	SONIPAT	RAI	S-NPP	28.86881	77.02673	12:59:07	D	2.30
116	SONIPAT	SONIPAT	S-NPP	28.97606	76.97064	12:59:07	D	7.80
117	SONIPAT	SONIPAT	S-NPP	29.05717	76.92245	12:59:07	D	6.40
118	SONIPAT	SONIPAT	S-NPP	29.06587	76.85600	12:59:07	D	7.00
119	YAMUNANAGAR	BILASPUR	S-NPP	30.21996	77.24325	12:59:07	D	2.20
120	YAMUNANAGAR	JAGADHRI	S-NPP	30.18848	77.24155	12:59:07	D	6.00
121	YAMUNANAGAR	MUSTAFABAD	S-NPP	30.25277	77.23447	12:59:07	D	4.50
122	YAMUNANAGAR	RADAUR	S-NPP	29.94415	77.22141	12:59:07	D	4.60
123	YAMUNANAGAR	RADAUR	S-NPP	30.08493	77.18480	12:59:07	D	7.50
124	YAMUNANAGAR	RADAUR	S-NPP	30.08619	77.18684	12:59:07	D	4.10



## Details of residue burning events in Uttar Pradesh on 10-May-2023

S. No.	District	Tehsil / Block	Satellite	Latitude	Longitude	ACQ_TIME	Day / Night	Fire Power (W/m2)
1	ALIGARH	KHAIR	S-NPP	27.99312	77.55554	12:59:07	D	9.00
2	ALIGARH	KHAIR	S-NPP	28.00998	77.55123	12:59:07	D	5.50
3	ALIGARH	KOL	S-NPP	27.83850	78.31034	12:59:07	D	3.20
4	BAGHPAT	BAGHPAT	S-NPP	28.91975	77.42149	12:59:07	D	5.50
5	BAGHPAT	BAGHPAT	S-NPP	28.92006	77.42047	12:59:07	D	4.90
6	BAHRAICH	NANPARA	S-NPP	28.11762	81.44675	12:59:07	D	12.80
7	BALLIA	BELTHARA ROAD	S-NPP	26.12110	83.81393	01:49:07	N	1.20
8	BALRAMPUR	TULSIPUR	S-NPP	27.41297	82.43952	01:49:07	N	0.10
9	BALRAMPUR	TULSIPUR	S-NPP	27.54711	82.64487	01:49:07	N	0.80
10	BANDA	BANDA	S-NPP	25.52914	80.48585	12:59:07	D	5.70
11	BAREILLY	FARIDPUR	S-NPP	28.27717	79.70040	12:59:07	D	9.60
12	BASTI	BHANPUR	S-NPP	26.94565	82.79659	01:49:07	N	0.70
13	BASTI	RUDHAULI	S-NPP	27.00355	82.84019	01:49:07	N	1.60
14	CHANDAULI	CHANDAULI	AQUA	25.32600	83.47400	13:12:04	D	12.80
15	GAUTAMBUDHNAGAR	GAUTAMBUDHNAGAR	S-NPP	28.34145	77.48502	12:59:07	D	3.90
16	GAUTAMBUDHNAGAR	GAUTAMBUDHNAGAR	S-NPP	28.47464	77.47050	12:59:07	D	2.90
17	GONDA	GONDA	AQUA	27.22100	82.17600	13:12:04	D	47.60
18	GONDA	GONDA	AQUA	27.22400	82.19000	13:12:04	D	31.30
19	GORAKHPUR	BANSGAON	S-NPP	26.46153	83.45636	01:49:07	N	0.90
20	HAMIRPUR	SARILA	S-NPP	25.69707	79.58702	01:49:07	N	0.50
21	JHANSI	JHANSI	S-NPP	25.48330	78.61906	12:59:07	D	19.50
22	JHANSI	JHANSI	S-NPP	25.53311	78.57880	01:49:07	N	1.40
23	JHANSI	MAURANIPUR	S-NPP	25.22012	79.26563	01:49:07	N	0.50
24	JYOTIBAPHULE NAGAR	DHANAURA	S-NPP	28.93880	78.09184	12:59:07	D	2.60
25	KHERI	GOLA	S-NPP	28.17892	80.42654	12:59:07	D	9.80
26	KHERI	LAKHIMPUR	AQUA	28.06300	80.68700	13:12:04	D	17.50
27	KHERI	MOHMADI	AQUA	28.02500	80.31600	13:12:04	D	16.70
28	KHERI	NIGHASAN	S-NPP	28.48669	80.88313	12:59:07	D	11.50
29	LALITPUR	KHAGA	S-NPP	24.40860	78.84962	12:59:07	D	8.60
30	LALITPUR	LALITPUR	S-NPP	24.82831	78.25567	12:59:07	D	14.30

31	MEERUT	MAWANA	S-NPP	29.04262	78.04029	12:59:07	D	1.90
32	MEERUT	MAWANA	S-NPP	29.07337	77.96458	12:59:07	D	3.00
33	MIRZAPUR	CHUNAR	S-NPP	25.13935	83.12981	01:49:07	N	0.60
34	MIRZAPUR	MIRZAPUR	S-NPP	25.19078	82.43411	12:59:07	D	13.50
35	RAMPUR	MILAK	S-NPP	28.68044	79.19311	12:59:07	D	3.00
36	SHAHJAHANPUR	SHAHJAHANPUR	S-NPP	27.83293	79.66168	12:59:07	D	7.00
37	SHARANPUR	NAKUR	S-NPP	29.69645	77.18873	12:59:07	D	3.50
38	SHARANPUR	NAKUR	S-NPP	29.84067	77.18810	12:59:07	D	2.60
39	SHARANPUR	NAKUR	S-NPP	29.85311	77.18478	12:59:07	D	6.00
40	SHARANPUR	NAKUR	S-NPP	30.00034	77.30669	12:59:07	D	2.20
41	SONBHADRA	REBUTSHGANJ	S-NPP	24.65132	83.15384	01:49:07	N	0.40
42	UNNAO	SAFIPUR	S-NPP	26.96358	80.22039	12:59:07	D	9.40

## Details of wheat residue burning events in Madhya Pradesh on 10-May-2023

S. No.	District	Tehsil / Block	Satellite	Latitude	Longitude	ACQ_TIME	Day / Night	Fire Power (W/m <sup>2</sup> )
1	BETUL	BHAINSDEHI	S-NPP	21.66324	77.98817	12:59:07	D	9.90
2	BHIND	LAHAR	S-NPP	26.15125	78.89377	12:59:07	D	7.50
3	BHIND	LAHAR	S-NPP	26.15431	78.89323	12:59:07	D	11.90
4	BHIND	LAHAR	S-NPP	26.16615	78.89392	01:49:07	N	1.10
5	BHOPAL	BERASIYA	S-NPP	23.51763	77.48785	01:49:07	N	0.30
6	BHOPAL	BERASIYA	S-NPP	23.60971	77.51871	01:49:07	N	0.40
7	BHOPAL	BERASIYA	S-NPP	23.69682	77.48619	12:59:07	D	7.80
8	BHOPAL	BERASIYA	S-NPP	23.73427	77.52662	12:59:07	D	8.40
9	BHOPAL	BERASIYA	S-NPP	23.75555	77.57316	01:49:07	N	0.50
10	BHOPAL	BERASIYA	S-NPP	23.86611	77.22894	01:49:07	N	0.60
11	CHHATARPUR	BARAMALEHRA	S-NPP	24.57267	79.23064	12:59:07	D	6.30
12	CHHATARPUR	BIJAWAR	S-NPP	24.67597	79.48754	12:59:07	D	5.70
13	CHHATARPUR	CHHATARPUR	S-NPP	24.79590	79.48098	12:59:07	D	9.50
14	CHHATARPUR	CHHATARPUR	S-NPP	24.80157	79.31217	12:59:07	D	9.90
15	CHHATARPUR	CHHATARPUR	S-NPP	24.81457	79.60069	12:59:07	D	15.40
16	CHHATARPUR	CHHATARPUR	S-NPP	24.82060	79.43473	12:59:07	D	26.60
17	CHHATARPUR	CHHATARPUR	S-NPP	24.82134	79.43861	12:59:07	D	26.60
18	CHHATARPUR	CHHATARPUR	S-NPP	24.83303	79.58856	12:59:07	D	9.00
19	CHHATARPUR	NOWGOAN	S-NPP	25.09537	79.82464	12:59:07	D	16.90
20	CHHATARPUR	RAJNAGAR	AQUA	25.04300	79.88600	13:12:04	D	31.00
21	CHHATARPUR	RAJNAGAR	S-NPP	24.76132	79.95779	12:59:07	D	12.40
22	CHHINDWARA	CHAURAI	S-NPP	21.90136	79.25432	12:59:07	D	3.30
23	CHHINDWARA	CHAURAI	S-NPP	22.15494	79.27814	12:59:07	D	9.50
24	CHHINDWARA	CHAURAI	S-NPP	22.17253	79.13731	12:59:07	D	5.80
25	CHHINDWARA	PARASIA	S-NPP	22.17947	78.88931	12:59:07	D	3.70
26	CHHINDWARA	PARASIA	S-NPP	22.21658	78.75886	12:59:07	D	2.90
27	DAMOH	JABERA	S-NPP	23.57730	79.68421	12:59:07	D	5.20
28	DAMOH	JABERA	S-NPP	23.65615	79.52271	12:59:07	D	2.30
29	DAMOH	JABERA	S-NPP	23.65751	79.51835	12:59:07	D	1.60
30	DAMOH	JABERA	S-NPP	23.72751	79.68319	12:59:07	D	2.30

31	DAMOH	PATERA	S-NPP	23.88485	79.78190	12:59:07	D	1.70
32	DAMOH	PATHARIA	S-NPP	23.85736	79.20614	01:49:07	N	0.60
33	DAMOH	PATHARIA	S-NPP	23.98698	79.39187	01:49:07	N	1.20
34	DATIA	SEONDHA	S-NPP	25.91414	78.63364	12:59:07	D	9.50
35	DATIA	SEONDHA	S-NPP	26.01963	78.73352	12:59:07	D	4.80
36	DEWAS	BAGLI	S-NPP	22.83903	76.29117	12:59:07	D	3.00
37	DHAR	SARDARPUR	S-NPP	22.69601	74.95942	14:39:24	D	23.80
38	GUNA	GUNA	S-NPP	24.82924	76.98833	01:49:07	N	0.90
39	GUNA	GUNA	S-NPP	24.83080	76.99000	01:49:07	N	1.00
40	GWALIOR	DABRA	AQUA	25.97800	78.29000	13:12:04	D	61.40
41	GWALIOR	DABRA	S-NPP	25.96184	78.25606	01:49:07	N	0.50
42	HOSHANGABAD	BANKHERI	S-NPP	22.86396	78.47578	12:59:07	D	4.20
43	HOSHANGABAD	SEONI MALWA	S-NPP	22.46587	77.31492	12:59:07	D	2.30
44	INDORE	DEPALPUR	S-NPP	22.73191	75.66951	12:59:07	D	10.50
45	INDORE	DEPALPUR	S-NPP	22.73256	75.64699	12:59:07	D	18.70
46	INDORE	SANWER	S-NPP	22.82397	75.74209	12:59:07	D	13.90
47	JABALPUR	JABALPUR	S-NPP	22.85734	79.82673	12:59:07	D	6.90
48	JABALPUR	JABALPUR	S-NPP	23.04315	79.96344	12:59:07	D	9.00
49	JABALPUR	MAJHOULI	S-NPP	23.39328	79.86565	12:59:07	D	3.90
50	JABALPUR	PATAN	S-NPP	23.20326	79.83549	12:59:07	D	2.00
51	JABALPUR	PATAN	S-NPP	23.22971	79.84177	12:59:07	D	8.80
52	JABALPUR	PATAN	S-NPP	23.24590	79.74881	12:59:07	D	5.10
53	JABALPUR	PATAN	S-NPP	23.24664	79.75274	12:59:07	D	7.70
54	JABALPUR	PATAN	S-NPP	23.24738	79.75666	12:59:07	D	7.70
55	JABALPUR	PATAN	S-NPP	23.25143	79.75575	12:59:07	D	9.10
56	JABALPUR	PATAN	S-NPP	23.26275	79.73271	12:59:07	D	6.20
57	JABALPUR	PATAN	S-NPP	23.26400	79.73251	12:59:07	D	6.80
58	JABALPUR	PATAN	S-NPP	23.29147	79.70587	12:59:07	D	2.90
59	JABALPUR	SAHPURA	S-NPP	23.18937	79.74091	12:59:07	D	7.40
60	JABALPUR	SIHORA	S-NPP	23.37690	80.13306	12:59:07	D	8.80
61	JABALPUR	SIHORA	S-NPP	23.38272	80.12016	12:59:07	D	10.20
62	KATNI	BAHURIBAND	S-NPP	23.58014	80.24152	12:59:07	D	5.80
63	KATNI	BIJERAGHOGARH	AQUA	23.97400	80.66800	13:12:04	D	25.70
64	KATNI	BIJERAGHOGARH	S-NPP	23.98185	80.67945	12:59:07	D	9.50

65	KATNI	BIJERAGHOGARH	S-NPP	23.98383	80.67725	12:59:07	D	22.30
66	KATNI	DHIMERKHEDA	S-NPP	23.65252	80.37532	12:59:07	D	11.90
67	MANDLA	NAINPUR	S-NPP	22.43118	80.13557	12:59:07	D	5.20
68	MANDLA	NAINPUR	S-NPP	22.44728	80.13205	12:59:07	D	5.20
69	MANDLA	NAINPUR	S-NPP	22.51353	80.06265	12:59:07	D	4.30
70	MANDLA	NAINPUR	S-NPP	22.52409	80.09649	12:59:07	D	2.40
71	MANDSAUR	GAROT	S-NPP	24.23033	75.77896	01:49:07	N	0.40
72	MANDSAUR	GAROT	S-NPP	24.23288	75.77773	01:49:07	N	0.40
73	MANDSAUR	MALHARGARH	S-NPP	24.15342	74.97802	12:59:07	D	13.30
74	MANDSAUR	MANDSAUR	S-NPP	24.05404	75.13825	01:49:07	N	0.90
75	RAISEN	BAGAMGANJ	S-NPP	23.49326	78.57489	01:49:07	N	0.40
76	RAISEN	BAGAMGANJ	S-NPP	23.61649	78.41980	12:59:07	D	10.40
77	RAISEN	BAGAMGANJ	S-NPP	23.62085	78.41876	12:59:07	D	6.90
78	RAISEN	BAGAMGANJ	S-NPP	23.64458	78.33025	12:59:07	D	6.50
79	RAISEN	GOHARGANJ	S-NPP	22.94956	77.60076	12:59:07	D	12.60
80	RAISEN	GOHARGANJ	S-NPP	22.98971	77.68984	12:59:07	D	9.80
81	RAISEN	RAISEN	AQUA	23.47000	77.77700	13:12:04	D	68.70
82	RAISEN	RAISEN	S-NPP	23.41443	77.72575	12:59:07	D	14.90
83	RAISEN	RAISEN	S-NPP	23.52165	77.71185	01:49:07	N	0.60
84	RAJGARH	NARSINGHGAR	S-NPP	23.57019	76.89849	01:49:07	N	0.70
85	RAJGARH	SARANGPUR	S-NPP	23.71647	76.70177	12:59:07	D	4.10
86	RATLAM	ALOTOT	S-NPP	23.57977	75.45908	12:59:07	D	2.90
87	RATLAM	RATLAM	S-NPP	23.36576	75.10280	12:59:07	D	12.50
88	REWA	HUZUR	S-NPP	24.64726	81.16943	01:49:07	N	0.50
89	SAGAR	BANDA	S-NPP	24.04282	78.74226	12:59:07	D	10.20
90	SAGAR	BANDA	S-NPP	24.08197	78.96805	01:49:07	N	0.50
91	SAGAR	DEVRI	S-NPP	23.48506	79.10234	01:49:07	N	0.50
92	SAGAR	KESALI	S-NPP	23.48462	78.87875	12:59:07	D	8.90
93	SAGAR	KHURAI	S-NPP	24.00943	78.42698	01:49:07	N	0.50
94	SAGAR	KHURAI	S-NPP	24.18770	78.52660	12:59:07	D	9.60
95	SAGAR	RAHAT GARH	S-NPP	23.68942	78.34916	01:49:07	N	0.50
96	SAGAR	REHLI	AQUA	23.54500	79.10200	13:12:04	D	44.80
97	SATNA	MAIHAR	S-NPP	24.16219	80.66727	01:49:07	N	0.40
98	SATNA	MAIHAR	S-NPP	24.18051	80.72718	12:59:07	D	9.20

99	SATNA	RAGURAJNAGAR	S-NPP	24.66377	80.64576	12:59:07	D	7.10
100	SATNA	RAGURAJNAGAR	S-NPP	24.68815	80.67194	12:59:07	D	7.50
101	SATNA	RAGURAJNAGAR	S-NPP	24.69602	80.92744	12:59:07	D	10.30
102	SATNA	RAMPURBAGHLEAN	AQUA	24.59100	81.12200	13:12:04	D	65.50
103	SATNA	RAMPURBAGHLEAN	AQUA	24.59500	81.14000	13:12:04	D	48.80
104	SATNA	RAMPURBAGHLEAN	AQUA	24.59600	81.08200	13:12:04	D	25.00
105	SATNA	RAMPURBAGHLEAN	AQUA	24.73100	81.10200	13:12:04	D	24.80
106	SATNA	RAMPURBAGHLEAN	S-NPP	24.59869	81.08446	12:59:07	D	11.40
107	SATNA	RAMPURBAGHLEAN	S-NPP	24.59969	81.08195	12:59:07	D	16.30
108	SATNA	UCHAHAR	S-NPP	24.46761	80.82835	12:59:07	D	9.10
109	SATNA	UCHAHAR	S-NPP	24.52019	80.79639	12:59:07	D	9.60
110	SATNA	UCHAHAR	S-NPP	24.52154	80.73900	12:59:07	D	9.10
111	SEONI	GHANSAUR	S-NPP	22.38693	79.74050	12:59:07	D	17.70
112	SEONI	GHANSAUR	S-NPP	22.39895	79.80467	12:59:07	D	5.60
113	SEONI	GHANSAUR	S-NPP	22.41722	79.80199	12:59:07	D	9.20
114	SEONI	GHANSAUR	S-NPP	22.60246	79.95507	12:59:07	D	8.50
115	SEONI	KEWLARI	S-NPP	22.36065	79.73785	12:59:07	D	15.00
116	SEONI	KEWLARI	S-NPP	22.36682	79.81580	12:59:07	D	7.60
117	SEONI	KEWLARI	S-NPP	22.37093	79.81490	12:59:07	D	7.60
118	SEONI	KEWLARI	S-NPP	22.41088	79.86851	12:59:07	D	30.80
119	SEONI	KEWLARI	S-NPP	22.41484	79.95795	12:59:07	D	8.00
120	SEONI	KEWLARI	S-NPP	22.41891	79.95706	12:59:07	D	10.90
121	SEONI	KURAI	S-NPP	21.96266	79.50179	12:59:07	D	5.70
122	SEONI	LAKHNADOU	S-NPP	22.33900	79.48597	12:59:07	D	8.20
123	SEONI	LAKHNADOU	S-NPP	22.81358	79.66684	12:59:07	D	6.90
124	SEONI	SEONI	S-NPP	22.01004	79.47360	12:59:07	D	6.90
125	SEONI	SEONI	S-NPP	22.01084	79.47781	12:59:07	D	8.20
126	SEONI	SEONI	S-NPP	22.08009	79.47642	12:59:07	D	7.90
127	SEONI	SEONI	S-NPP	22.09918	79.50739	12:59:07	D	13.70
128	SEONI	SEONI	S-NPP	22.16238	79.47650	12:59:07	D	6.50
129	SEONI	SEONI	S-NPP	22.22305	79.67881	12:59:07	D	6.90
130	SEONI	SEONI	S-NPP	22.25299	79.44849	12:59:07	D	3.50
131	SEONI	SEONI	S-NPP	22.25516	79.80240	12:59:07	D	2.80
132	SEONI	SEONI	S-NPP	22.25745	79.81449	12:59:07	D	8.70

133	SEONI	SEONI	S-NPP	22.29171	79.71513	12:59:07	D	9.20
134	SHAJAPUR	AGAR	S-NPP	23.60596	76.18030	12:59:07	D	7.40
135	SHAJAPUR	AGAR	S-NPP	23.67969	76.18819	12:59:07	D	12.20
136	SHAJAPUR	AGAR	S-NPP	23.68037	76.19135	12:59:07	D	12.20
137	SHAJAPUR	AGAR	S-NPP	23.83139	76.06561	12:59:07	D	1.70
138	SHAJAPUR	BAROUD	S-NPP	23.64865	75.84740	12:59:07	D	13.10
139	SHAJAPUR	SHAJAPUR	S-NPP	23.43832	76.24641	12:59:07	D	9.70
140	SHAJAPUR	SUJALPUR	S-NPP	23.47357	76.63532	12:59:07	D	21.70
141	SHEOPUR	SHEOPUR	S-NPP	25.41366	76.60858	01:49:07	N	0.70
142	SHEOPUR	SHEOPUR	S-NPP	25.41553	76.60961	01:49:07	N	0.30
143	SHEOPUR	SHEOPUR	S-NPP	25.67638	76.54485	12:59:07	D	17.60
144	SHEOPUR	SHEOPUR	S-NPP	25.74878	76.72057	12:59:07	D	5.60
145	SHIVPURI	KHANIYADHAN	S-NPP	24.94596	78.15951	12:59:07	D	6.90
146	SHIVPURI	NARWAR	AQUA	25.69700	77.98400	13:12:04	D	157.00
147	SHIVPURI	NARWAR	AQUA	25.69700	77.99200	13:12:04	D	169.70
148	SHIVPURI	NARWAR	AQUA	25.70300	78.01400	13:12:04	D	58.10
149	SHIVPURI	NARWAR	AQUA	25.71100	77.98800	13:12:04	D	39.70
150	SHIVPURI	NARWAR	S-NPP	25.70745	77.99072	12:59:07	D	20.40
151	SHIVPURI	SHIVPURI	S-NPP	25.48105	77.61944	01:49:07	N	0.50
152	TIKAMGARH	BALDEOGARH	S-NPP	24.87914	79.19098	12:59:07	D	16.00
153	TIKAMGARH	BALDEOGARH	S-NPP	24.90780	79.34116	12:59:07	D	6.00
154	TIKAMGARH	NIVARI	S-NPP	25.37557	78.83923	01:49:07	N	0.80
155	TIKAMGARH	NIVARI	S-NPP	25.45300	78.75268	12:59:07	D	17.10
156	UJJAIN	BARNAGAR	S-NPP	22.94988	75.35014	12:59:07	D	8.40
157	UJJAIN	KACHROD	S-NPP	23.39334	75.20185	12:59:07	D	4.00
158	UJJAIN	KACHROD	S-NPP	23.39868	75.20048	12:59:07	D	4.00
159	UJJAIN	NAGDA	S-NPP	23.27942	75.55965	12:59:07	D	14.50
160	UJJAIN	NAGDA	S-NPP	23.28032	75.55723	12:59:07	D	16.50
161	UJJAIN	NAGDA	S-NPP	23.28107	75.56072	12:59:07	D	17.80
162	VIDESHA	GYARASPUR	S-NPP	23.55811	78.02079	01:49:07	N	0.30
163	VIDESHA	GYARASPUR	S-NPP	23.67970	77.91927	01:49:07	N	0.60
164	VIDESHA	NATERAN	S-NPP	23.90293	77.72033	12:59:07	D	23.10
165	VIDESHA	NATERAN	S-NPP	23.90869	77.77174	12:59:07	D	7.30
166	VIDESHA	NATERAN	S-NPP	23.91127	77.50970	01:49:07	N	0.40

167	VIDESHA	NATERAN	S-NPP	23.92604	77.71389	01:49:07	N	0.30
168	VIDESHA	NATERAN	S-NPP	23.94383	77.75818	12:59:07	D	6.10
169	VIDESHA	VIDESHA	S-NPP	23.46997	77.95873	01:49:07	N	4.40
170	VIDESHA	VIDESHA	S-NPP	23.48980	77.94814	01:49:07	N	1.00
171	VIDESHA	VIDESHA	S-NPP	23.49340	77.94872	01:49:07	N	1.00
172	VIDESHA	VIDESHA	S-NPP	23.52792	77.60895	01:49:07	N	1.00
173	VIDESHA	VIDESHA	S-NPP	23.53159	77.60952	01:49:07	N	1.00
174	VIDESHA	VIDESHA	S-NPP	23.53970	77.52016	01:49:07	N	0.60
175	VIDESHA	VIDESHA	S-NPP	23.54463	77.51134	01:49:07	N	0.40
176	VIDESHA	VIDESHA	S-NPP	23.55420	77.60834	01:49:07	N	0.50
177	VIDESHA	VIDESHA	S-NPP	23.57073	77.73112	01:49:07	N	1.10
178	VIDESHA	VIDESHA	S-NPP	23.57133	77.72652	01:49:07	N	1.20
179	VIDESHA	VIDESHA	S-NPP	23.58531	77.76154	01:49:07	N	0.70
180	VIDESHA	VIDESHA	S-NPP	23.58895	77.76213	01:49:07	N	0.70
181	VIDESHA	VIDESHA	S-NPP	23.59261	77.67799	01:49:07	N	0.90
182	VIDESHA	VIDESHA	S-NPP	23.59378	77.80959	01:49:07	N	0.40
183	VIDESHA	VIDESHA	S-NPP	23.59565	77.71149	01:49:07	N	0.90
184	VIDESHA	VIDESHA	S-NPP	23.59741	77.81017	01:49:07	N	0.40
185	VIDESHA	VIDESHA	S-NPP	23.59802	77.80561	01:49:07	N	1.50
186	VIDESHA	VIDESHA	S-NPP	23.59863	77.80104	01:49:07	N	1.50
187	VIDESHA	VIDESHA	S-NPP	23.60165	77.80618	01:49:07	N	0.80
188	VIDESHA	VIDESHA	S-NPP	23.60821	77.86768	01:49:07	N	0.80
189	VIDESHA	VIDESHA	S-NPP	23.60844	77.69936	01:49:07	N	0.50
190	VIDESHA	VIDESHA	S-NPP	23.61183	77.86826	01:49:07	N	0.80
191	VIDESHA	VIDESHA	S-NPP	23.61270	77.69534	01:49:07	N	1.60
192	VIDESHA	VIDESHA	S-NPP	23.61451	77.70975	01:49:07	N	0.80
193	VIDESHA	VIDESHA	S-NPP	23.62967	77.73569	01:49:07	N	0.80
194	VIDESHA	VIDESHA	S-NPP	23.63332	77.73627	01:49:07	N	1.30
195	WEST NIMAR	BARWAH	S-NPP	22.23762	76.05575	12:59:07	D	9.60
196	WEST NIMAR	KASRAWAD	S-NPP	22.08772	75.42282	12:59:07	D	12.70
197	WEST NIMAR	KASRAWAD	S-NPP	22.09805	75.39209	12:59:07	D	6.80



**The study used data received from following Satellites at NRSC Ground Station**

S. No.	Satellite Name	Sensor	Resolution (meter)	Day / Night Passes
1.	Suomi NPP	VIIRS	375 / 750	Both
2.	Terra	MODIS	1000	Both
3.	Aqua	MODIS	1000	Both

**The wheat mask for the Punjab, Haryana and Uttar Pradesh were provided by MNCFC, MoA&FW, Govt of India  
The rabi crop mask for Delhi and Madhya Pradesh were provided by NRSC**

**Study Team**

ICAR – HQ	Dr S.N. Jha	DDG (AG. ENGG.)	<a href="mailto:ddgengg@icar.org.in">ddgengg@icar.org.in</a>
	Dr Rajbir Singh	ADG (NRM)	<a href="mailto:rajbirsingh.zpd@gmail.com">rajbirsingh.zpd@gmail.com</a>
ICAR - IARI	<b>Dr V.K. Sehgal</b>	Pr. Scientist & Nodal Officer	<a href="mailto:iaricreams@gmail.com">iaricreams@gmail.com</a>
	Dr Rajkumar Dhakar	Scientist	<a href="mailto:raidhakar.iari@gmail.com">raidhakar.iari@gmail.com</a>
	Mr Mohd Jahangir	Lab Assistant (KRISHI)	<a href="mailto:mjahangir198@gmail.com">mjahangir198@gmail.com</a>
ICAR - ATARI	Dr Parvender Sheoran	Director ATARI (Zone-I) Ludhiana	<a href="mailto:zcu1ldh@gmail.com">zcu1ldh@gmail.com</a>
	Dr. J.P. Mishra	Director ATARI (Zone-II) Jodhpur	<a href="mailto:jp.mishra67@gov.in">jp.mishra67@gov.in</a>
		Director ATARI (Zone-III) Kanpur	<a href="mailto:zpdicarkanpur@gmail.com">zpdicarkanpur@gmail.com</a>
ICAR - IASRI	Dr Rajender Parsad	Director	<a href="mailto:rajender.parsad@icar.gov.in">rajender.parsad@icar.gov.in</a>

GIS Maps of fire events can be visualized online on ICAR KRISHI Geoportal website: <http://geoportal.icar.gov.in:8080/geoexplorer/composer/>  
(Part of KRISHI Portal: <https://krishi.icar.gov.in> initiative)

\*\*\*