

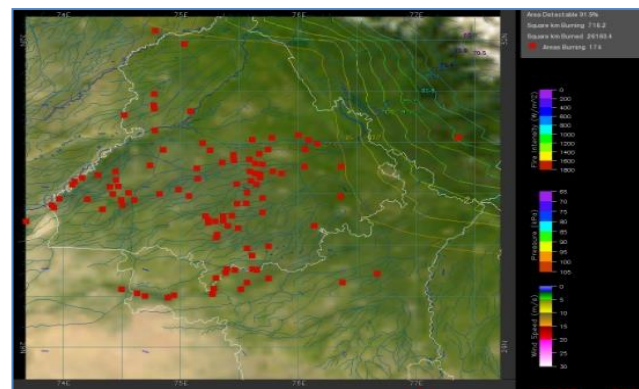
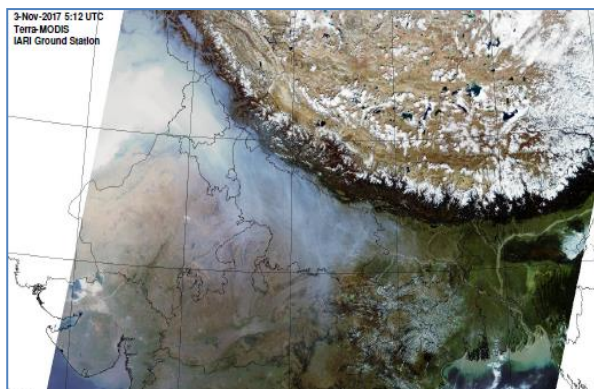


**Bulletin
No. 43**

**Events Date:
13-May-2023**

**Issued on:
13-May-2023**

MONITORING WHEAT RESIDUE BURNING IN INDIA USING SATELLITE REMOTE SENSING DURING 2023



Prepared by:

**Consortium for Research on Agroecosystem Monitoring and Modeling from Space (CREAMS) Laboratory,
Division of Agricultural Physics, ICAR – Indian Agricultural Research Institute, New Delhi – 110012**

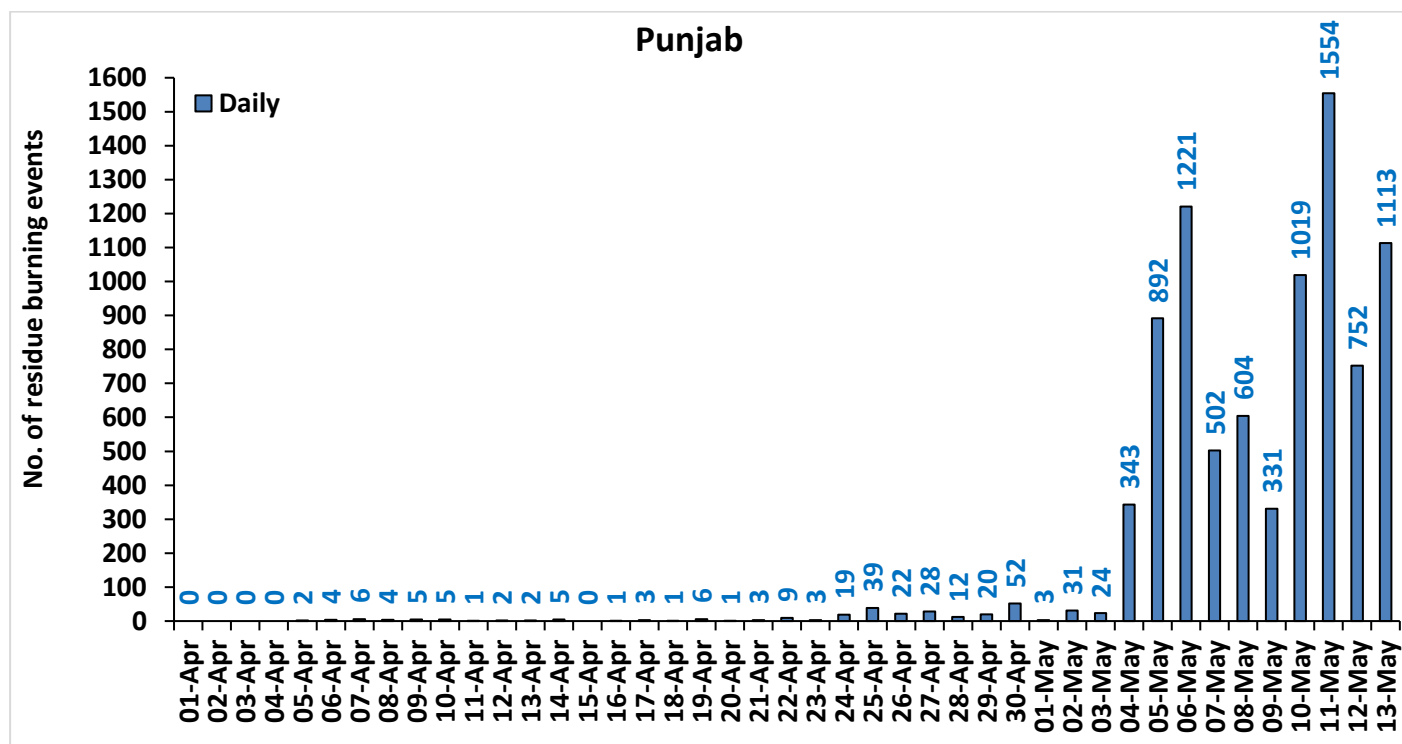
<http://creams.iari.res.in/cms2/>



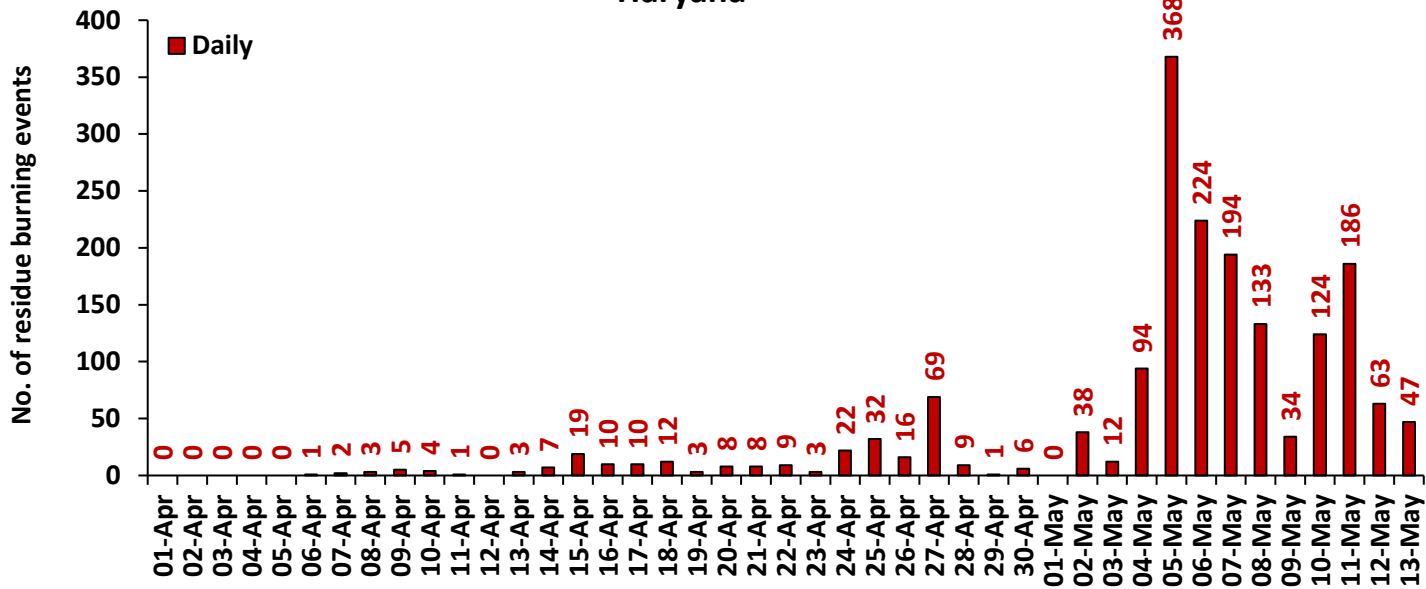
Highlights for 13-May-2023

- The active fire events due to wheat residue burning were monitored using satellite remote sensing, following the new "Standard Protocol for Estimation of Crop Residue Burning Fire Events using Satellite Data".
- Satellites detected **1300** residue burning events in the five study States on 13-May-2023.
- The state wise events detected on 13-May-2023 were **1113** in Punjab, **47** in Haryana, **00** in Delhi, **57** in Uttar Pradesh and **83** in Madhya Pradesh.
- The number of events has increased from **1045** on 12-May-2023 to **1300** on 13-May-2023 in the five study states.
- Total **34743** burning events were detected in the five states between 01-Apr-2023 and 13-May-2023, which are distributed as **8644**, **1780**, **6177**, **05**, and **18137** in Punjab, Haryana, UP, Delhi, and MP, respectively.

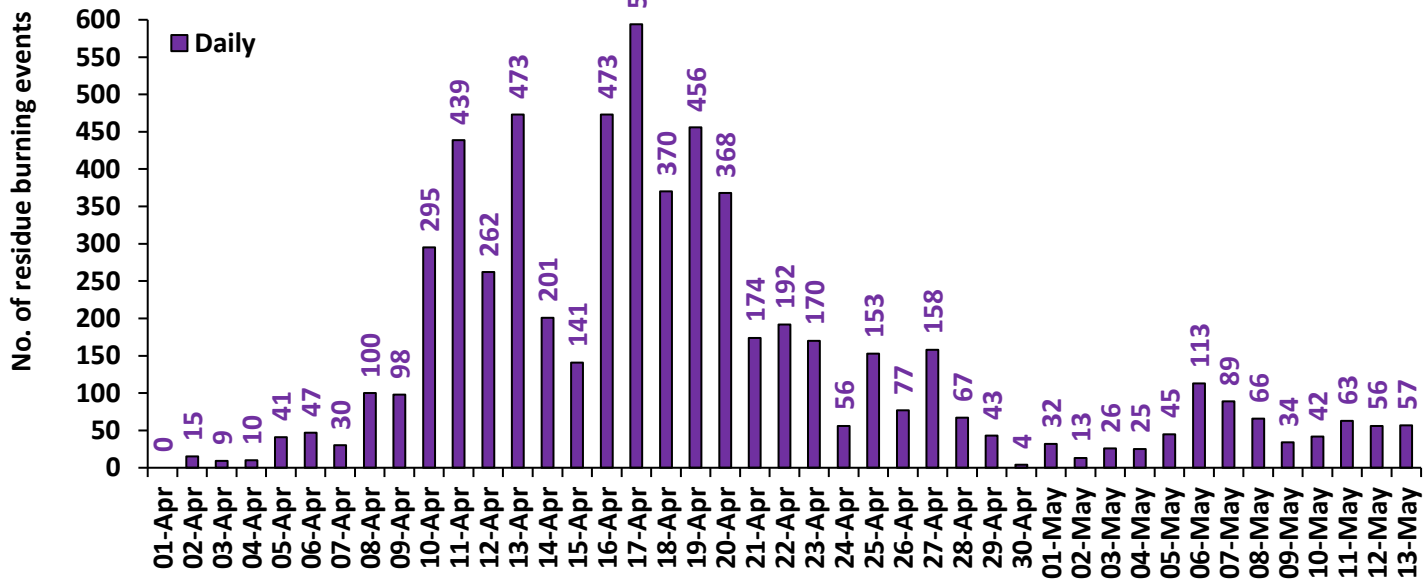
Temporal distribution of wheat residue burning events for the study States in 2023

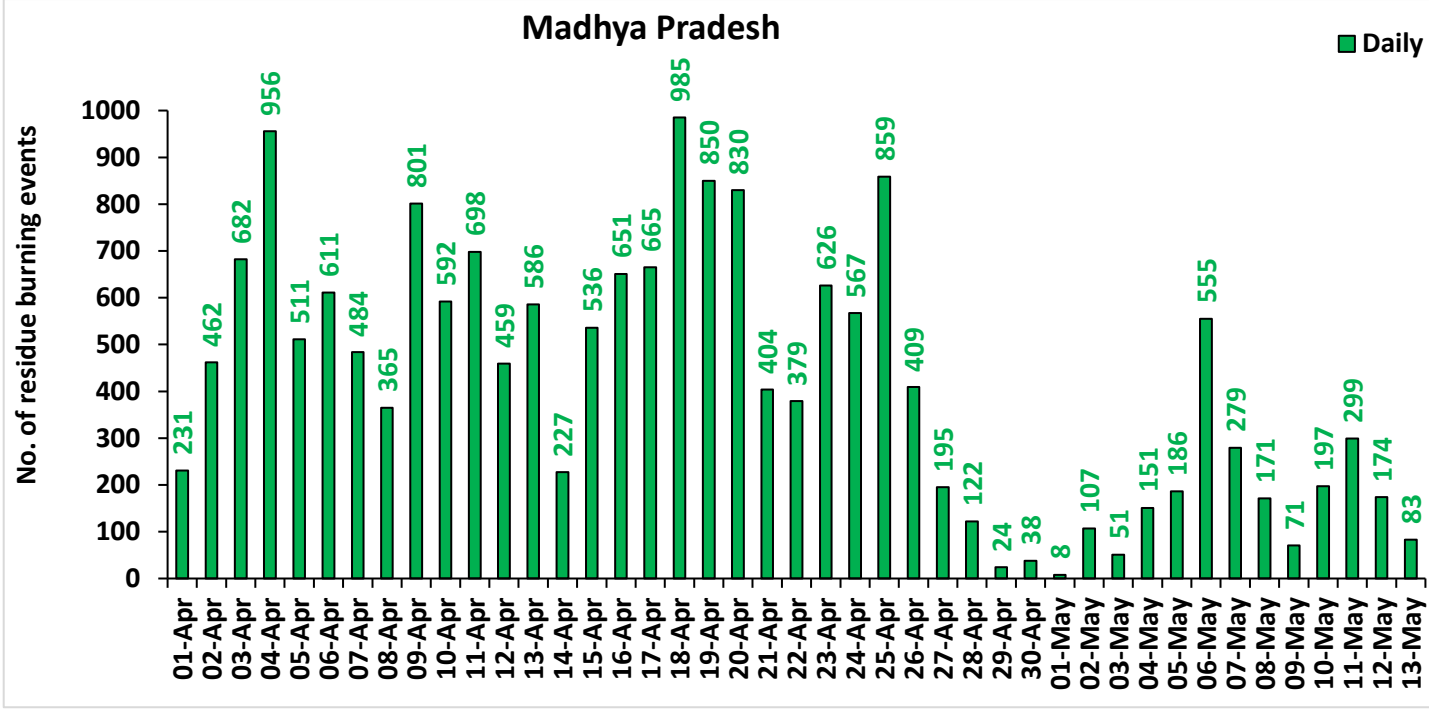
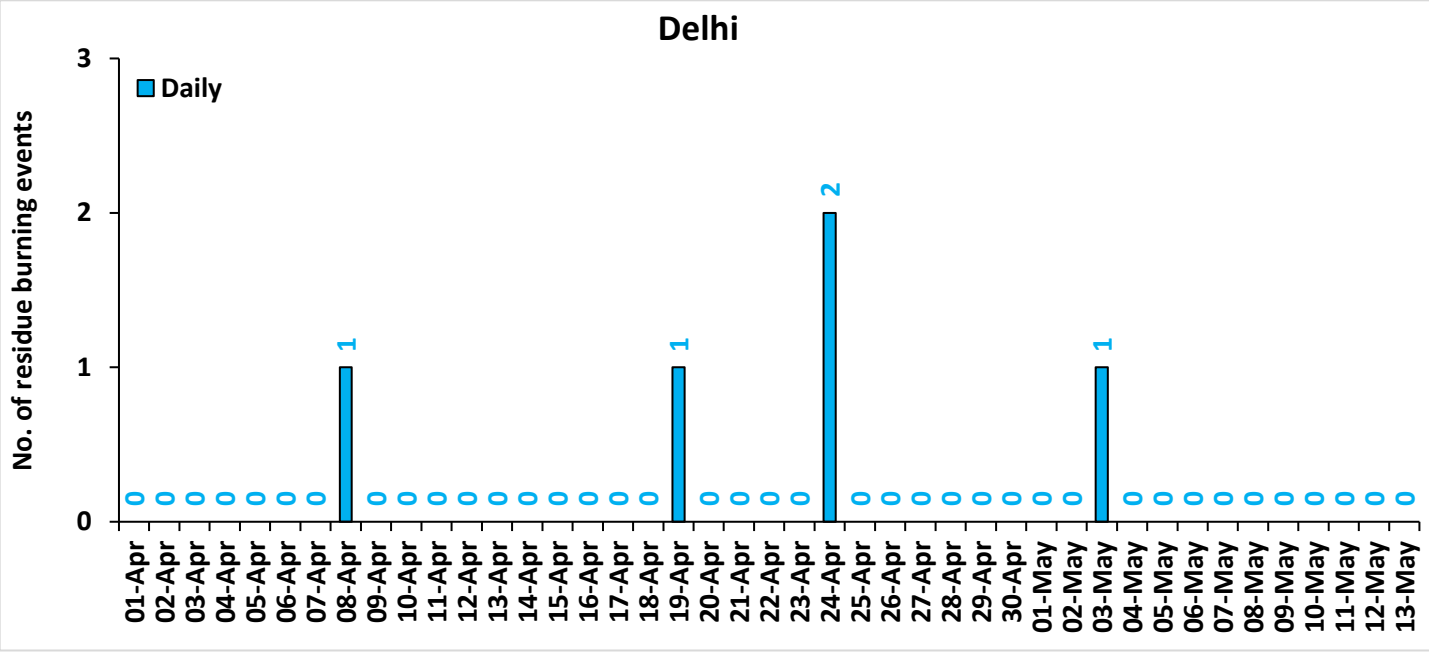


Haryana

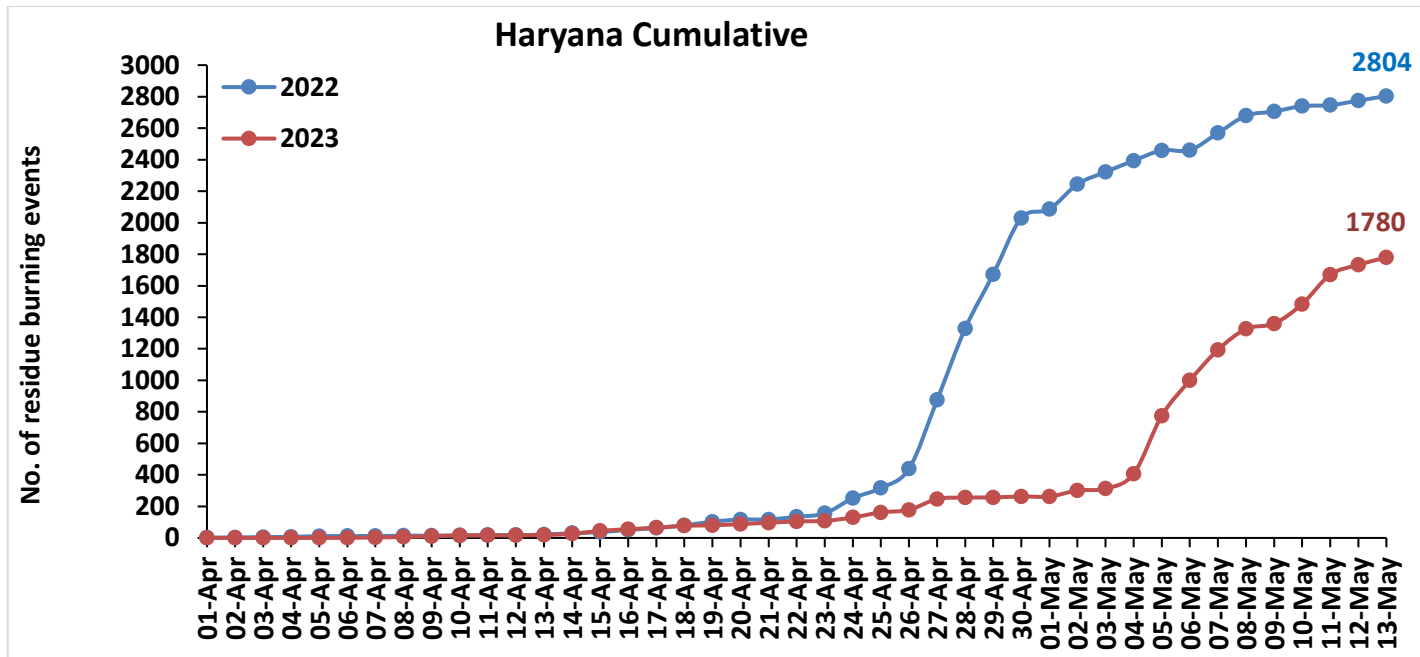
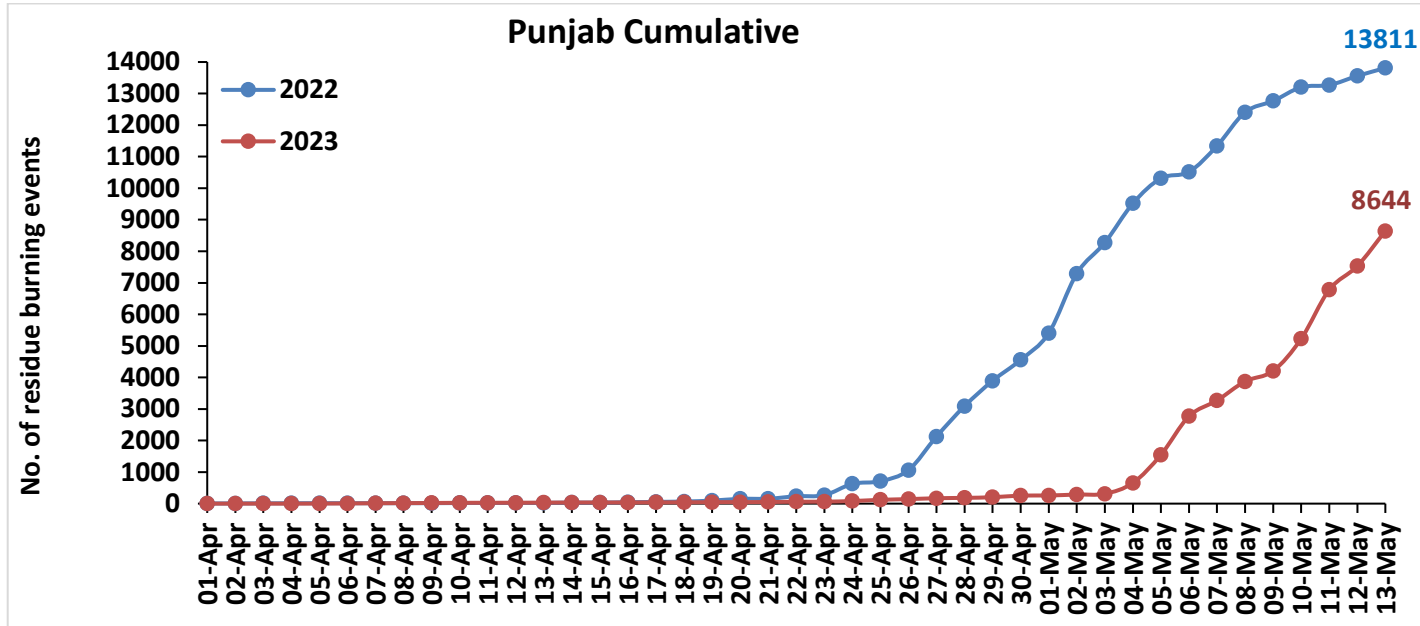


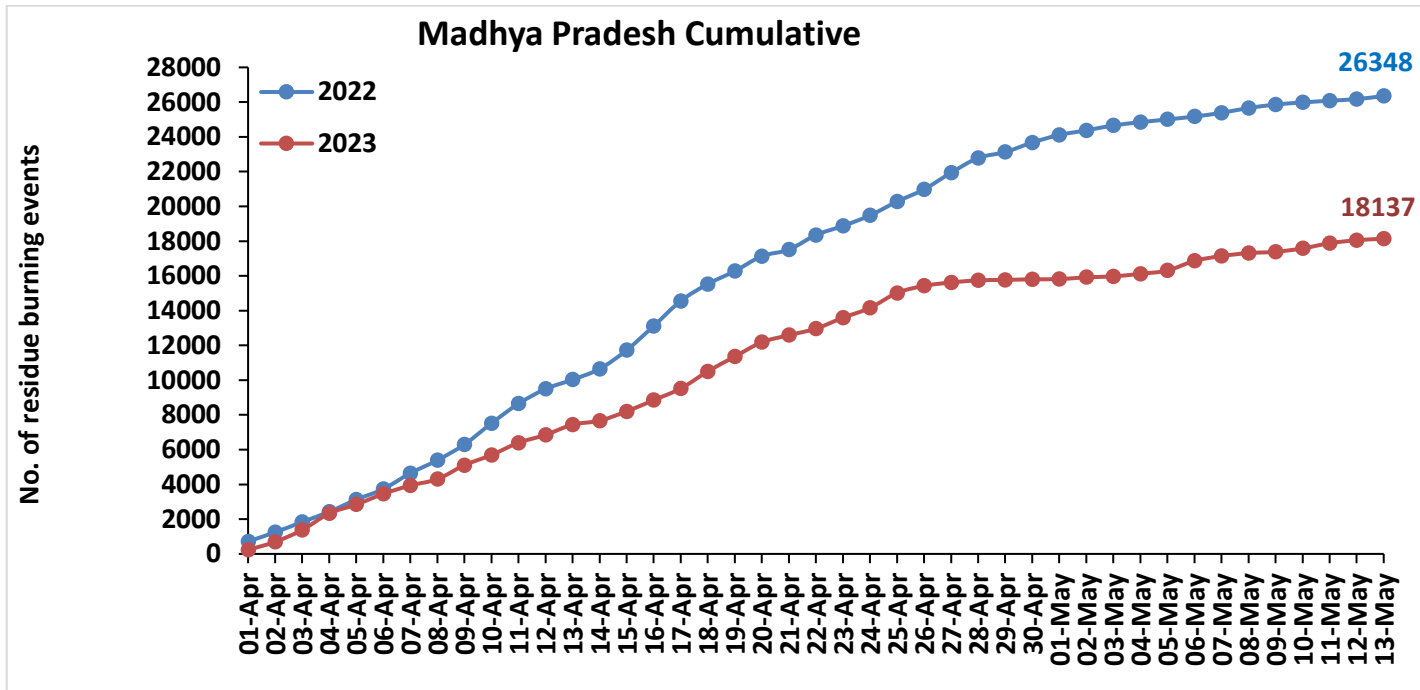
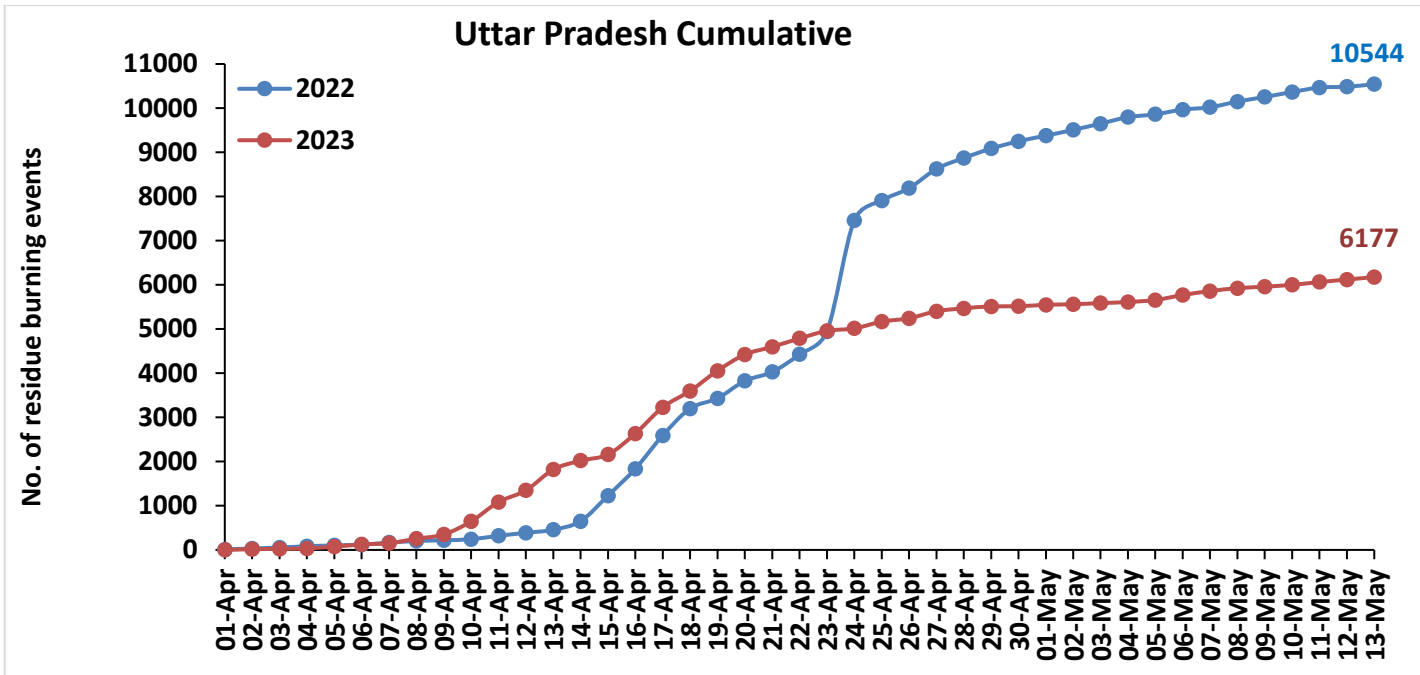
Uttar Pradesh



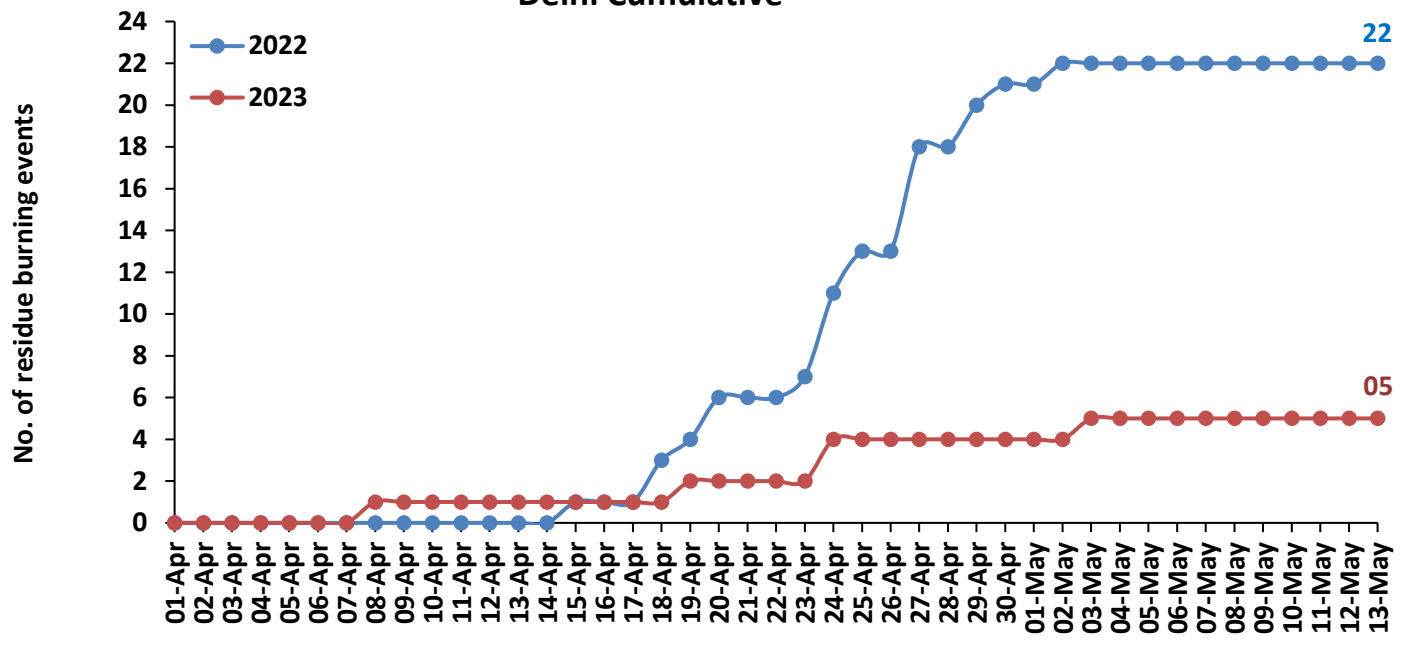


Comparison of residue burning events in current year (2023) with previous year (2022) for the study States





Delhi Cumulative



District-wise cumulative number of wheat residue burning events detected in 2022 and 2023
(Period: 01 April-13 May)

(a) Punjab

District	01 Apr-13 May	
	2022	2023
Amritsar	1217	644
Barnala	468	524
Bathinda	822	551
Faridkot	510	373
Fatehgarh Sahib	63	84
Fazilka	516	351
Firozpur	1400	691
Gurdaspur	1098	677
Hoshiarpur	464	324
Jalandhar	676	282
Kapurthala	664	243
Ludhiana	864	568
Mansa	405	322
Moga	1080	895
Muktsar	691	494
Pathankot	157	57
Patiala	427	383
Rupnagar	59	7
Sangrur	985	766
SAS NAGAR (Mohali)	24	9
SBS Nagar	169	56
Tarn Taran	1052	343
Total	13811	8644

(b) Haryana

District	01 Apr-13 May	
	2022	2023
AMBALA	89	71
BHIWANI	75	22
CHARKHI DADRI	9	7
FARIDABAD	16	15
FATEHABAD	269	264
GURGAON	6	9
HISAR	142	111
JHAJJAR	121	64
JIND	342	150
KAITHAL	286	177
KARNAL	377	209
KURUKSHETRA	135	51
MAHENDRAGARH	0	0
MEWAT	1	8
PALWAL	33	28
PANCHKULA	3	2
PANIPAT	212	105
REWARI	3	3
ROHTAK	210	91
SIRSA	182	240
SONIPAT	271	123
YAMUNANAGAR	22	30
Total	2804	1780

(c) Uttar Pradesh

District	01 Apr-13 May							
	2022	2023						
			GAUTAMBUDHNAGAR	27	24	MUZAFARNAGAR	54	32
			GAZIPUR	97	46	PILHIBHIT	311	60
AGRA	2	0	GHAZIABAD	13	8	PRATAPGARH	24	15
ALIGARH	19	33	GONDA	21	28	RAIBEARELI	92	17
ALLAHABAD	98	32	GORAKHPUR	962	366	RAMPUR	115	25
AMBEDKARNAGAR	11	13	HAMIRPUR	14	32	SANTKABIRNAGAR	683	430
AURAIYA	96	12	HARDOI	99	64	SANTRAVIDASNAGAR	1	2
AZAMGARH	86	73	JALAUN	18	17	SHAHJAHANPUR	319	90
BADAUN	7	5	JAUNPUR	22	6	SHARANPUR	31	18
BAGHPAT	7	3	JHANSI	101	122	SHRAWASTI	85	43
BAHRAICH	105	42	JYOTIBAPHULE NAGAR	9	5	SIDDHARTH NAGAR	2533	1848
BALLIA	140	204	KANNAUJ	0	1	SITAPUR	21	22
BALRAMPUR	236	96	KANPUR	9	2	SONBHADRA	114	30
BANDA	7	3	KANPUR DEHAT	28	16	SULTANPUR	60	27
BARABANKI	7	3	KAUSHAMBI	6	4	UNNAO	53	12
BAREILLY	107	18	KHERI	156	73	VARANASI	1	0
BASTI	424	224	KUSHINAGAR	222	95	Total	10544	6177
BIJNOR	50	24	LACKNOW	13	0			
BULANDSAHAR	8	9	LALITPUR	52	59			
CHANDAULI	286	60	MAHAMAYANAGAR	0	1			
CHITRAKOOT	22	3	MAHARAJGANJ	1493	977			
DEORIA	725	439	MAHOBA	2	44			
ETAH	1	5	MAINPURI	5	6			
ETAWAH	3	4	MATHURA	24	53			
FAIZABAD	4	10	MAU	76	64			
FARRUKHABAD	3	2	MEERUT	17	21			
FATEHPUR	38	26	MIRZAPUR	62	15			
FIROZABAD	1	0	MORADABAD	6	14			

(d) Madhya Pradesh

District	01 Apr-13 May				
	2022	2023			
			PANNA	145	64
ALIRAJPUR	0	0	RAISEN	2604	1656
ANUPPUR	33	1	RAJGARH	139	171
ASHOKNAGAR	628	227	RATLAM	192	289
BALAGHAT	27	1	REWA	119	51
BARWANI	5	7	SAGAR	732	562
BETUL	181	52	SATNA	760	195
BHIND	58	55	SEHORE	930	649
BHOPAL	950	484	SEONI	1522	793
BURHANPUR	12	2	SHAHDOL	101	8
CHHATARPUR	139	129	SHAJAPUR	376	538
CHHINDWARA	500	261	SHEOPUR	361	447
DAMOH	205	249	SHIVPURI	158	110
DATIA	367	279	SIDHI	20	1
DEWAS	558	567	SINGRAULI	109	3
DHAR	1004	874	TIKAMGARH	29	78
DINDORI	44	4	UJJAIN	1219	1766
EAST NIMAR	82	103	UMARIA	50	8
GUNA	709	387	VIDESHA	3712	1712
GWALIOR	552	381	WEST NIMAR	32	56
HARDA	375	270	Total	26348	18137
HOSHANGABAD	4062	2756			
INDORE	968	1009			
JABALPUR	875	471			
JHABUA	2	6			
KATNI	287	120			
MANDLA	174	38			
MANDSAUR	63	107			
MORENA	29	0			
NARSHIMAPURA	129	99			
NIMACH	20	41			

(e) Delhi

District	01 Apr-13 May	
	2022	2023
CENTRAL	0	0
EAST	0	0
NEW DELHI	0	0
NORTH	18	2
NORTH EAST	0	0
NORTH WEST DELHI	1	0
SHAHADRA	0	0
SOUTH	1	0
SOUTH EAST	0	0
SOUTH WEST DELHI	1	2
WEST DELHI	1	1
Total	22	5

State-wise and date-wise number of wheat residue burning events detected in 2022 and 2023
(Period: 01 April-13 May)

Date	Punjab		Haryana		Uttar Pradesh		Delhi		Madhya Pradesh	
	2022	2023	2022	2023	2022	2023	2022	2023	2022	2023
01-Apr	6	0	2	0	10	0	0	0	715	231
02-Apr	1	0	1	0	22	15	0	0	531	462
03-Apr	3	0	2	0	21	9	0	0	589	682
04-Apr	2	0	2	0	29	10	0	0	589	956
05-Apr	2	2	4	0	21	41	0	0	698	511
06-Apr	0	4	1	1	16	47	0	0	612	611
07-Apr	0	6	0	2	46	30	0	0	908	484
08-Apr	1	4	2	3	37	100	0	1	749	365
09-Apr	0	5	0	5	16	98	0	0	907	801
10-Apr	4	5	2	4	24	295	0	0	1217	592
11-Apr	2	1	2	1	78	439	0	0	1129	698
12-Apr	0	2	0	0	67	262	0	0	847	459
13-Apr	3	2	3	3	70	473	0	0	537	586
14-Apr	7	5	9	7	193	201	0	0	618	227
15-Apr	1	0	7	19	579	141	1	0	1079	536
16-Apr	13	1	14	10	609	473	0	0	1390	651
17-Apr	10	3	12	10	751	594	0	0	1441	665
18-Apr	12	1	17	12	611	370	2	0	972	985
19-Apr	29	6	23	3	231	456	1	1	748	850
20-Apr	56	1	14	8	395	368	2	0	856	830
21-Apr	4	3	0	8	202	174	0	0	379	404
22-Apr	77	9	17	9	398	192	0	0	839	379
23-Apr	35	3	22	2	519	170	1	0	524	626
24-Apr	360	19	96	22	2515	56	4	2	605	567
25-Apr	82	39	65	32	450	153	2	0	796	859

26-Apr	354	22	122	16	277	77	0	0	706	409
27-Apr	1064	28	436	69	436	158	5	0	955	195
28-Apr	965	12	453	9	249	67	0	0	849	122
29-Apr	802	20	345	1	213	43	2	0	340	24
30-Apr	662	52	357	6	166	4	1	0	547	38
01-May	848	3	56	0	126	32	0	0	437	8
02-May	1887	31	159	38	132	13	1	0	265	107
03-May	979	24	77	12	141	26	0	1	283	51
04-May	1247	343	72	94	147	25	0	0	188	151
05-May	796	892	65	368	64	45	0	0	159	186
06-May	202	1221	2	224	107	113	0	0	166	555
07-May	827	502	108	194	52	89	0	0	215	279
08-May	1065	604	110	133	130	66	0	0	275	171
09-May	357	331	27	34	103	34	0	0	199	71
10-May	437	1019	34	124	113	42	0	0	123	197
11-May	67	1554	6	186	101	63	0	0	99	299
12-May	289	752	29	63	17	56	0	0	94	174
13-May	253	1113	29	47	60	57	0	0	173	83
Total	13811	8644	2804	1780	10544	6177	22	5	26348	18137

Details of residue burning events in Punjab on 13-May-2023

S. No.	District	Tehsil / Block	Satellite	Latitude	Longitude	ACQ_TIME	Day / Night	Fire Power (W/m2)
1	AMRITSAR	AJNALA	S-NPP	31.80991	74.75585	13:43:21	D	7.20
2	AMRITSAR	AJNALA	S-NPP	31.81067	74.81552	13:43:21	D	4.80
3	AMRITSAR	AJNALA	S-NPP	31.81557	74.90720	13:43:21	D	6.70
4	AMRITSAR	AJNALA	S-NPP	31.81966	74.91112	13:43:21	D	4.40
5	AMRITSAR	AJNALA	S-NPP	31.83292	74.81726	13:43:21	D	5.70
6	AMRITSAR	AJNALA	S-NPP	31.83407	74.79860	13:43:21	D	8.60
7	AMRITSAR	AJNALA	S-NPP	31.84617	74.69995	13:43:21	D	4.90
8	AMRITSAR	AJNALA	S-NPP	31.84686	74.84251	13:43:21	D	7.50
9	AMRITSAR	AJNALA	S-NPP	31.84802	74.90725	13:43:21	D	4.00
10	AMRITSAR	AJNALA	S-NPP	31.85151	74.85095	13:43:21	D	4.00
11	AMRITSAR	AJNALA	S-NPP	31.85384	74.92484	13:43:21	D	6.30
12	AMRITSAR	AJNALA	S-NPP	31.86316	74.88598	13:43:21	D	8.00
13	AMRITSAR	AJNALA	S-NPP	31.86550	74.93208	13:43:21	D	8.90
14	AMRITSAR	AJNALA	S-NPP	31.86609	74.93664	13:43:21	D	8.90
15	AMRITSAR	AJNALA	S-NPP	31.87073	74.88928	13:43:21	D	4.30
16	AMRITSAR	AJNALA	S-NPP	31.87131	74.89383	13:43:21	D	8.60
17	AMRITSAR	AJNALA	S-NPP	31.87680	74.68987	13:43:21	D	4.70
18	AMRITSAR	AJNALA	S-NPP	31.90921	74.69324	13:43:21	D	2.60
19	AMRITSAR	AJNALA	S-NPP	31.91421	74.81204	13:43:21	D	6.00
20	AMRITSAR	AJNALA	S-NPP	31.91770	74.81142	13:43:21	D	6.00
21	AMRITSAR	AJNALA	S-NPP	31.93283	74.81799	13:43:21	D	5.10
22	AMRITSAR	AJNALA	S-NPP	31.93421	74.88271	13:43:21	D	5.10
23	AMRITSAR	AJNALA	AQUA	31.81200	74.75300	13:39:48	D	17.10
24	AMRITSAR	AJNALA	AQUA	31.81800	74.90200	13:39:48	D	20.10
25	AMRITSAR	AJNALA	AQUA	31.84800	74.84000	13:39:48	D	18.00
26	AMRITSAR	AJNALA	AQUA	31.86400	74.93100	13:39:48	D	14.30
27	AMRITSAR	AJNALA	AQUA	31.86700	74.89000	13:39:48	D	15.20
28	AMRITSAR	ATTARI	S-NPP	31.55754	74.63937	13:43:21	D	26.00
29	AMRITSAR	ATTARI	S-NPP	31.57870	74.60038	13:43:21	D	5.90

30	AMRITSAR	ATTARI	S-NPP	31.58042	74.59912	13:43:21	D	16.30
31	AMRITSAR	ATTARI	S-NPP	31.58408	74.65270	13:43:21	D	10.00
32	AMRITSAR	ATTARI	S-NPP	31.58562	74.65340	13:43:21	D	4.90
33	AMRITSAR	ATTARI	S-NPP	31.62121	74.57465	13:43:21	D	9.20
34	AMRITSAR	ATTARI	S-NPP	31.63442	74.56776	13:43:21	D	3.50
35	AMRITSAR	ATTARI	AQUA	31.55600	74.63800	13:39:48	D	20.30
36	AMRITSAR	CHOGAWAN	S-NPP	31.67378	74.65117	13:43:21	D	7.90
37	AMRITSAR	CHOGAWAN	S-NPP	31.67429	74.62840	13:43:21	D	3.40
38	AMRITSAR	CHOGAWAN	S-NPP	31.69295	74.54028	13:43:21	D	14.00
39	AMRITSAR	CHOGAWAN	S-NPP	31.72241	74.65727	13:43:21	D	10.20
40	AMRITSAR	CHOGAWAN	S-NPP	31.72299	74.66173	13:43:21	D	11.20
41	AMRITSAR	CHOGAWAN	S-NPP	31.72645	74.66110	13:43:21	D	11.20
42	AMRITSAR	CHOGAWAN	S-NPP	31.74131	74.58578	13:43:21	D	7.10
43	AMRITSAR	CHOGAWAN	S-NPP	31.74294	74.54479	13:43:21	D	8.60
44	AMRITSAR	CHOGAWAN	S-NPP	31.75302	74.67455	13:43:21	D	8.40
45	AMRITSAR	CHOGAWAN	S-NPP	31.76371	74.56818	13:43:21	D	12.20
46	AMRITSAR	CHOGAWAN	S-NPP	31.77070	74.59409	13:43:21	D	7.80
47	AMRITSAR	CHOGAWAN	S-NPP	31.77592	74.60676	13:43:21	D	3.60
48	AMRITSAR	CHOGAWAN	S-NPP	31.78156	74.56948	13:43:21	D	4.10
49	AMRITSAR	CHOGAWAN	S-NPP	31.80513	74.65706	13:43:21	D	5.40
50	AMRITSAR	CHOGAWAN	S-NPP	31.82936	74.65269	13:43:21	D	7.10
51	AMRITSAR	CHOGAWAN	S-NPP	31.82995	74.65715	13:43:21	D	7.10
52	AMRITSAR	CHOGAWAN	S-NPP	31.83111	74.66608	13:43:21	D	7.10
53	AMRITSAR	CHOGAWAN	S-NPP	31.86915	74.63186	13:43:21	D	3.90
54	AMRITSAR	CHOGAWAN	AQUA	31.69200	74.53600	13:39:48	D	16.90
55	AMRITSAR	CHOGAWAN	AQUA	31.72400	74.65500	13:39:48	D	25.60
56	AMRITSAR	CHOGAWAN	AQUA	31.82600	74.65200	13:39:48	D	14.10
57	AMRITSAR	HARSHA CHHINA	S-NPP	31.75545	74.74723	13:43:21	D	8.50
58	AMRITSAR	HARSHA CHHINA	S-NPP	31.75850	74.88021	13:43:21	D	10.00
59	AMRITSAR	HARSHA CHHINA	S-NPP	31.76005	74.72810	13:43:21	D	6.60
60	AMRITSAR	HARSHA CHHINA	S-NPP	31.78871	74.86559	13:43:21	D	11.10
61	AMRITSAR	HARSHA CHHINA	S-NPP	31.79001	74.68616	13:43:21	D	8.40
62	AMRITSAR	HARSHA CHHINA	S-NPP	31.79633	74.89668	13:43:21	D	6.50

63	AMRITSAR	HARSHA CHHINA	S-NPP	31.79703	74.71234	13:43:21	D	6.30
64	AMRITSAR	HARSHA CHHINA	S-NPP	31.79931	74.70279	13:43:21	D	4.30
65	AMRITSAR	HARSHA CHHINA	S-NPP	31.80278	74.70217	13:43:21	D	4.30
66	AMRITSAR	HARSHA CHHINA	S-NPP	31.80338	74.70663	13:43:21	D	4.30
67	AMRITSAR	HARSHA CHHINA	S-NPP	31.80513	74.68444	13:43:21	D	7.60
68	AMRITSAR	HARSHA CHHINA	S-NPP	31.80562	74.88576	13:43:21	D	4.00
69	AMRITSAR	HARSHA CHHINA	S-NPP	31.80566	74.69708	13:43:21	D	3.10
70	AMRITSAR	HARSHA CHHINA	S-NPP	31.82709	74.85528	13:43:21	D	11.30
71	AMRITSAR	HARSHA CHHINA	AQUA	31.76300	74.88000	13:39:48	D	21.80
72	AMRITSAR	HARSHA CHHINA	AQUA	31.79300	74.70200	13:39:48	D	14.30
73	AMRITSAR	HARSHA CHHINA	AQUA	31.79500	74.71500	13:39:48	D	19.90
74	AMRITSAR	HARSHA CHHINA	AQUA	31.79700	74.89900	13:39:48	D	10.30
75	AMRITSAR	HARSHA CHHINA	AQUA	31.80100	74.68600	13:39:48	D	9.40
76	AMRITSAR	HARSHA CHHINA	AQUA	31.80300	74.69900	13:39:48	D	21.20
77	AMRITSAR	JANDIALA GURU	S-NPP	31.54468	75.00344	13:43:21	D	6.00
78	AMRITSAR	JANDIALA GURU	S-NPP	31.54818	75.00282	13:43:21	D	6.00
79	AMRITSAR	JANDIALA GURU	S-NPP	31.57260	74.94293	13:43:21	D	6.20
80	AMRITSAR	JANDIALA GURU	S-NPP	31.57492	74.93328	13:43:21	D	14.70
81	AMRITSAR	JANDIALA GURU	S-NPP	31.57505	75.10066	13:43:21	D	4.50
82	AMRITSAR	JANDIALA GURU	S-NPP	31.57551	74.93781	13:43:21	D	14.70
83	AMRITSAR	JANDIALA GURU	S-NPP	31.57609	74.94232	13:43:21	D	6.20
84	AMRITSAR	JANDIALA GURU	S-NPP	31.58374	75.00122	13:43:21	D	10.30
85	AMRITSAR	JANDIALA GURU	S-NPP	31.59611	75.09698	13:43:21	D	6.60
86	AMRITSAR	JANDIALA GURU	S-NPP	31.60424	75.04883	13:43:21	D	2.90
87	AMRITSAR	JANDIALA GURU	S-NPP	31.62892	74.98984	13:43:21	D	6.00
88	AMRITSAR	JANDIALA GURU	S-NPP	31.63239	75.01716	13:43:21	D	7.50
89	AMRITSAR	JANDIALA GURU	S-NPP	31.64816	74.97250	13:43:21	D	3.20
90	AMRITSAR	MAJITHA	S-NPP	31.70776	75.04592	13:43:21	D	5.50
91	AMRITSAR	MAJITHA	S-NPP	31.70831	75.02246	13:43:21	D	6.20
92	AMRITSAR	MAJITHA	S-NPP	31.71170	74.96594	13:43:21	D	12.10
93	AMRITSAR	MAJITHA	S-NPP	31.71520	74.96533	13:43:21	D	12.10
94	AMRITSAR	MAJITHA	S-NPP	31.72887	75.07033	13:43:21	D	6.90
95	AMRITSAR	MAJITHA	S-NPP	31.73292	75.04619	13:43:21	D	11.90

96	AMRITSAR	MAJITHA	S-NPP	31.73298	75.07430	13:43:21	D	7.90
97	AMRITSAR	MAJITHA	S-NPP	31.74740	75.01705	13:43:21	D	7.40
98	AMRITSAR	MAJITHA	S-NPP	31.74942	75.09020	13:43:21	D	7.20
99	AMRITSAR	MAJITHA	S-NPP	31.77721	75.02584	13:43:21	D	6.20
100	AMRITSAR	MAJITHA	S-NPP	31.79713	75.06927	13:43:21	D	9.30
101	AMRITSAR	MAJITHA	S-NPP	31.80239	75.05424	13:43:21	D	5.90
102	AMRITSAR	MAJITHA	S-NPP	31.80357	75.06343	13:43:21	D	21.60
103	AMRITSAR	MAJITHA	S-NPP	31.80406	74.98371	13:43:21	D	3.50
104	AMRITSAR	MAJITHA	S-NPP	31.80416	75.06802	13:43:21	D	21.60
105	AMRITSAR	MAJITHA	S-NPP	31.80465	74.98828	13:43:21	D	3.40
106	AMRITSAR	MAJITHA	S-NPP	31.80528	75.02092	13:43:21	D	5.70
107	AMRITSAR	MAJITHA	S-NPP	31.81742	74.94872	13:43:21	D	8.40
108	AMRITSAR	MAJITHA	S-NPP	31.82092	74.94811	13:43:21	D	8.40
109	AMRITSAR	MAJITHA	S-NPP	31.82686	74.99373	13:43:21	D	3.70
110	AMRITSAR	MAJITHA	S-NPP	31.84251	74.94897	13:43:21	D	8.70
111	AMRITSAR	MAJITHA	S-NPP	31.84275	74.95009	13:43:21	D	10.70
112	AMRITSAR	MAJITHA	AQUA	31.71500	74.96600	13:39:48	D	13.30
113	AMRITSAR	MAJITHA	AQUA	31.78800	75.02200	13:39:48	D	13.90
114	AMRITSAR	MAJITHA	AQUA	31.80400	75.05800	13:39:48	D	36.80
115	AMRITSAR	MAJITHA	AQUA	31.80600	75.07100	13:39:48	D	23.40
116	AMRITSAR	MAJITHA	AQUA	31.81600	74.94800	13:39:48	D	14.40
117	AMRITSAR	RAYYA	S-NPP	31.51452	75.27352	13:43:21	D	9.00
118	AMRITSAR	RAYYA	S-NPP	31.52564	75.21961	13:43:21	D	7.30
119	AMRITSAR	RAYYA	S-NPP	31.54034	75.22177	13:43:21	D	2.90
120	AMRITSAR	RAYYA	S-NPP	31.55285	75.29060	13:43:21	D	9.50
121	AMRITSAR	RAYYA	S-NPP	31.58616	75.27311	13:43:21	D	8.90
122	AMRITSAR	RAYYA	S-NPP	31.59439	75.30972	13:43:21	D	12.30
123	AMRITSAR	RAYYA	S-NPP	31.65921	75.25098	13:43:21	D	5.00
124	AMRITSAR	RAYYA	AQUA	31.61100	75.38500	13:39:48	D	29.20
125	AMRITSAR	TARSIKKA	S-NPP	31.57152	75.15756	13:43:21	D	16.10
126	AMRITSAR	TARSIKKA	S-NPP	31.57504	75.15695	13:43:21	D	16.10
127	AMRITSAR	TARSIKKA	S-NPP	31.60322	75.18028	13:43:21	D	7.60
128	AMRITSAR	TARSIKKA	S-NPP	31.60378	75.15664	13:43:21	D	6.40

129	AMRITSAR	TARSIKKA	S-NPP	31.64962	75.17693	13:43:21	D	5.10
130	AMRITSAR	TARSIKKA	S-NPP	31.65201	75.19540	13:43:21	D	7.50
131	AMRITSAR	TARSIKKA	S-NPP	31.65742	75.12978	13:43:21	D	7.20
132	AMRITSAR	TARSIKKA	S-NPP	31.66030	75.18112	13:43:21	D	7.20
133	AMRITSAR	TARSIKKA	S-NPP	31.66204	75.19499	13:43:21	D	7.90
134	AMRITSAR	TARSIKKA	S-NPP	31.67091	75.12271	13:43:21	D	10.30
135	AMRITSAR	TARSIKKA	S-NPP	31.67318	75.22620	13:43:21	D	7.70
136	AMRITSAR	TARSIKKA	S-NPP	31.67793	75.03713	13:43:21	D	7.70
137	AMRITSAR	TARSIKKA	S-NPP	31.68381	75.11106	13:43:21	D	4.80
138	AMRITSAR	TARSIKKA	S-NPP	31.68791	75.11504	13:43:21	D	4.30
139	AMRITSAR	TARSIKKA	S-NPP	31.71318	75.17191	13:43:21	D	3.80
140	AMRITSAR	TARSIKKA	S-NPP	31.72724	75.14114	13:43:21	D	7.00
141	AMRITSAR	TARSIKKA	AQUA	31.57300	75.15900	13:39:48	D	29.40
142	AMRITSAR	TARSIKKA	AQUA	31.57400	75.15200	13:39:48	D	16.90
143	AMRITSAR	TARSIKKA	AQUA	31.67100	75.12300	13:39:48	D	17.20
144	AMRITSAR	TARSIKKA	AQUA	31.67900	75.10800	13:39:48	D	10.20
145	AMRITSAR	VERKA	S-NPP	31.67649	74.80589	13:43:21	D	6.30
146	AMRITSAR	VERKA	S-NPP	31.69825	74.94510	13:43:21	D	7.80
147	AMRITSAR	VERKA	S-NPP	31.69884	74.94963	13:43:21	D	10.20
148	AMRITSAR	VERKA	S-NPP	31.70234	74.94902	13:43:21	D	5.60
149	AMRITSAR	VERKA	AQUA	31.70100	74.94200	13:39:48	D	13.20
150	BARNALA	BARNALA	AQUA	30.24700	75.47700	13:39:48	D	33.40
151	BARNALA	MAHAL KALAN	S-NPP	30.54690	75.53299	13:43:21	D	7.10
152	BARNALA	MAHAL KALAN	S-NPP	30.54748	75.53760	13:43:21	D	7.10
153	BARNALA	MAHAL KALAN	S-NPP	30.55043	75.53239	13:43:21	D	6.50
154	BARNALA	MAHAL KALAN	AQUA	30.44700	75.56200	13:39:48	D	15.90
155	BARNALA	MAHAL KALAN	AQUA	30.52400	75.66000	13:39:48	D	27.20
156	BARNALA	MAHAL KALAN	AQUA	30.54600	75.53300	13:39:48	D	14.60
157	BARNALA	MAHAL KALAN	AQUA	30.58400	75.45900	13:39:48	D	12.80
158	BARNALA	SEHNA	S-NPP	30.49283	75.39149	13:43:21	D	4.80
159	BARNALA	SEHNA	AQUA	30.48100	75.46300	13:39:48	D	24.50
160	BATHINDA	BATHINDA	S-NPP	30.17826	74.80793	13:43:21	D	11.20
161	BATHINDA	BATHINDA	AQUA	30.17100	74.75100	13:39:48	D	15.10

162	BATHINDA	BHAGTA BHAI KA	S-NPP	30.47327	75.24293	13:43:21	D	6.20
163	BATHINDA	BHAGTA BHAI KA	S-NPP	30.50326	75.24824	13:43:21	D	5.40
164	BATHINDA	BHAGTA BHAI KA	AQUA	30.39300	75.13600	13:39:48	D	13.70
165	BATHINDA	BHAGTA BHAI KA	AQUA	30.44800	75.03400	13:39:48	D	12.40
166	BATHINDA	GONIANA MANDI	S-NPP	30.36292	74.86557	13:43:21	D	17.40
167	BATHINDA	MAUR	S-NPP	30.15232	75.25848	13:43:21	D	5.80
168	BATHINDA	NATHANA	S-NPP	30.20694	75.15491	13:43:21	D	16.40
169	BATHINDA	NATHANA	S-NPP	30.32355	75.05926	13:43:21	D	9.00
170	BATHINDA	NATHANA	S-NPP	30.36695	75.08420	13:43:21	D	8.50
171	BATHINDA	PHUL	AQUA	30.30300	75.14900	13:39:48	D	15.50
172	BATHINDA	RAMPURA	S-NPP	30.17336	75.14271	13:43:21	D	6.30
173	BATHINDA	SANGAT	S-NPP	30.09875	74.76495	13:43:21	D	5.60
174	BATHINDA	SANGAT	AQUA	30.10100	74.75900	13:39:48	D	23.60
175	BATHINDA	TALWANDI SABO	AQUA	29.90200	74.96100	02:47:16	N	7.60
176	FARIDKOT	FARIDKOT	S-NPP	30.59430	74.69418	13:43:21	D	7.70
177	FARIDKOT	FARIDKOT	S-NPP	30.62499	74.72070	13:43:21	D	12.90
178	FARIDKOT	FARIDKOT	S-NPP	30.62645	74.72385	13:43:21	D	11.40
179	FARIDKOT	FARIDKOT	S-NPP	30.63710	74.82867	13:43:21	D	5.20
180	FARIDKOT	FARIDKOT	S-NPP	30.65185	74.65838	13:43:21	D	9.90
181	FARIDKOT	FARIDKOT	S-NPP	30.66113	74.91512	13:43:21	D	19.70
182	FARIDKOT	FARIDKOT	S-NPP	30.71754	74.55476	13:43:21	D	10.30
183	FARIDKOT	FARIDKOT	AQUA	30.61900	74.71300	13:39:48	D	27.00
184	FARIDKOT	FARIDKOT	AQUA	30.62100	74.72700	13:39:48	D	23.10
185	FARIDKOT	FARIDKOT	AQUA	30.62900	74.71100	13:39:48	D	27.30
186	FARIDKOT	FARIDKOT	AQUA	30.63200	74.72400	13:39:48	D	24.10
187	FARIDKOT	FARIDKOT	AQUA	30.66500	74.91400	13:39:48	D	21.10
188	FARIDKOT	FARIDKOT	AQUA	30.71800	74.86800	13:39:48	D	11.20
189	FARIDKOT	JAITON	S-NPP	30.39946	74.77049	13:43:21	D	7.70
190	FARIDKOT	JAITON	S-NPP	30.40303	74.82297	13:43:21	D	18.30
191	FARIDKOT	JAITON	S-NPP	30.40361	74.82730	13:43:21	D	20.00
192	FARIDKOT	JAITON	S-NPP	30.40472	74.80937	13:43:21	D	5.50
193	FARIDKOT	JAITON	S-NPP	30.40711	74.85331	13:43:21	D	5.40
194	FARIDKOT	JAITON	S-NPP	30.40910	75.00032	13:43:21	D	2.90

195	FARIDKOT	JAITON	S-NPP	30.41283	74.84341	13:43:21	D	9.70
196	FARIDKOT	JAITON	S-NPP	30.41562	74.81187	13:43:21	D	6.70
197	FARIDKOT	JAITON	S-NPP	30.41914	74.83786	13:43:21	D	6.80
198	FARIDKOT	JAITON	S-NPP	30.42038	74.77665	13:43:21	D	5.60
199	FARIDKOT	JAITON	S-NPP	30.42793	74.90305	13:43:21	D	6.80
200	FARIDKOT	JAITON	S-NPP	30.42851	74.90740	13:43:21	D	6.80
201	FARIDKOT	JAITON	S-NPP	30.43985	74.76434	13:43:21	D	4.70
202	FARIDKOT	JAITON	S-NPP	30.46458	74.89769	13:43:21	D	5.20
203	FARIDKOT	JAITON	S-NPP	30.48767	75.01920	13:43:21	D	2.40
204	FARIDKOT	JAITON	S-NPP	30.49855	74.91405	13:43:21	D	5.50
205	FARIDKOT	JAITON	S-NPP	30.50379	74.95344	13:43:21	D	5.50
206	FARIDKOT	JAITON	S-NPP	30.51008	74.92096	13:43:21	D	8.00
207	FARIDKOT	JAITON	S-NPP	30.51295	74.91598	13:43:21	D	13.40
208	FARIDKOT	JAITON	S-NPP	30.51353	74.92034	13:43:21	D	13.40
209	FARIDKOT	JAITON	S-NPP	30.53486	74.92107	13:43:21	D	3.00
210	FARIDKOT	JAITON	S-NPP	30.53530	74.87180	13:43:21	D	13.80
211	FARIDKOT	JAITON	AQUA	30.40000	74.76400	13:39:48	D	14.80
212	FARIDKOT	JAITON	AQUA	30.46100	74.74900	13:39:48	D	20.70
213	FARIDKOT	JAITON	AQUA	30.46300	74.76300	13:39:48	D	16.40
214	FARIDKOT	JAITON	AQUA	30.47300	74.76000	13:39:48	D	17.60
215	FARIDKOT	JAITON	AQUA	30.51200	74.92100	13:39:48	D	15.30
216	FARIDKOT	JAITON	AQUA	30.53300	74.99400	13:39:48	D	11.70
217	FARIDKOT	KOT KAPURA	S-NPP	30.49847	74.86048	13:43:21	D	10.40
218	FARIDKOT	KOT KAPURA	S-NPP	30.54339	74.92126	13:43:21	D	6.80
219	FARIDKOT	KOT KAPURA	S-NPP	30.55031	74.92005	13:43:21	D	5.30
220	FARIDKOT	KOT KAPURA	S-NPP	30.55145	74.92882	13:43:21	D	6.20
221	FARIDKOT	KOT KAPURA	S-NPP	30.55376	74.91943	13:43:21	D	5.30
222	FARIDKOT	KOT KAPURA	S-NPP	30.58831	74.88646	13:43:21	D	6.20
223	FARIDKOT	KOT KAPURA	S-NPP	30.59098	74.74789	13:43:21	D	6.60
224	FARIDKOT	KOT KAPURA	S-NPP	30.59747	74.84908	13:43:21	D	8.30
225	FARIDKOT	KOT KAPURA	S-NPP	30.60558	74.88342	13:43:21	D	5.80
226	FARIDKOT	KOT KAPURA	S-NPP	30.61408	74.81491	13:43:21	D	3.70
227	FARIDKOT	KOT KAPURA	S-NPP	30.62470	74.94734	13:43:21	D	9.40

228	FARIDKOT	KOT KAPURA	S-NPP	30.65298	74.94688	13:43:21	D	5.00
229	FARIDKOT	KOT KAPURA	S-NPP	30.65476	74.94775	13:43:21	D	9.50
230	FARIDKOT	KOT KAPURA	S-NPP	30.66226	74.95093	13:43:21	D	12.60
231	FARIDKOT	KOT KAPURA	S-NPP	30.66573	74.95032	13:43:21	D	12.60
232	FARIDKOT	KOT KAPURA	AQUA	30.49100	74.79900	13:39:48	D	11.20
233	FARIDKOT	KOT KAPURA	AQUA	30.55200	74.92000	13:39:48	D	18.00
234	FARIDKOT	KOT KAPURA	AQUA	30.60500	74.87300	13:39:48	D	12.50
235	FARIDKOT	KOT KAPURA	AQUA	30.67000	74.94100	13:39:48	D	15.30
236	FATEHGARH SAHIB	BASSI PATHANAN	S-NPP	30.64239	76.36613	13:43:21	D	6.50
237	FATEHGARH SAHIB	BASSI PATHANAN	S-NPP	30.64606	76.36553	13:43:21	D	8.10
238	FATEHGARH SAHIB	BASSI PATHANAN	S-NPP	30.66196	76.37315	13:43:21	D	6.40
239	FATEHGARH SAHIB	BASSI PATHANAN	S-NPP	30.67791	76.35023	13:43:21	D	5.90
240	FATEHGARH SAHIB	BASSI PATHANAN	S-NPP	30.68581	76.41522	13:43:21	D	4.10
241	FATEHGARH SAHIB	KHERA	S-NPP	30.56204	76.49927	13:43:21	D	13.30
242	FATEHGARH SAHIB	KHERA	S-NPP	30.56936	76.52896	13:43:21	D	8.20
243	FATEHGARH SAHIB	KHERA	S-NPP	30.57009	76.47231	13:43:21	D	28.50
244	FATEHGARH SAHIB	KHERA	S-NPP	30.57378	76.47172	13:43:21	D	13.80
245	FATEHGARH SAHIB	SIRHIND	S-NPP	30.49423	76.36031	13:43:21	D	6.50
246	FATEHGARH SAHIB	SIRHIND	S-NPP	30.50097	76.38451	13:43:21	D	8.10
247	FATEHGARH SAHIB	SIRHIND	S-NPP	30.50098	76.47614	13:43:21	D	10.80
248	FATEHGARH SAHIB	SIRHIND	S-NPP	30.50344	76.46552	13:43:21	D	6.80
249	FATEHGARH SAHIB	SIRHIND	S-NPP	30.50713	76.46493	13:43:21	D	6.80
250	FATEHGARH SAHIB	SIRHIND	S-NPP	30.56470	76.39661	13:43:21	D	15.60
251	FATEHGARH SAHIB	SIRHIND	S-NPP	30.59410	76.42244	13:43:21	D	8.50
252	FATEHGARH SAHIB	SIRHIND	S-NPP	30.60144	76.32983	13:43:21	D	6.30
253	FATEHGARH SAHIB	SIRHIND	S-NPP	30.60576	76.42567	13:43:21	D	7.80
254	FATEHGARH SAHIB	SIRHIND	AQUA	30.56600	76.46600	13:39:48	D	22.60
255	FAZILKA	ABOHAR	AQUA	30.13900	74.35100	13:39:48	D	21.60
256	FAZILKA	ARNIWALA SHEIKH SUBANPUR	S-NPP	30.32198	74.18166	13:43:21	D	8.00
257	FAZILKA	ARNIWALA SHEIKH SUBANPUR	S-NPP	30.32345	74.26688	13:43:21	D	5.90
258	FAZILKA	ARNIWALA SHEIKH SUBANPUR	S-NPP	30.32868	74.30450	13:43:21	D	4.90
259	FAZILKA	ARNIWALA SHEIKH SUBANPUR	S-NPP	30.42093	74.18981	13:43:21	D	7.60
260	FAZILKA	FAZILKA	S-NPP	30.35253	73.94753	13:43:21	D	13.00

261	FAZILKA	FAZILKA	S-NPP	30.43247	74.12364	13:43:21	D	6.10
262	FAZILKA	FAZILKA	S-NPP	30.46843	74.07990	13:43:21	D	24.70
263	FAZILKA	JALALABAD	S-NPP	30.50195	74.37419	13:43:21	D	4.30
264	FAZILKA	JALALABAD	S-NPP	30.54504	74.38368	13:43:21	D	7.30
265	FAZILKA	JALALABAD	S-NPP	30.55779	74.09392	13:43:21	D	6.70
266	FAZILKA	JALALABAD	S-NPP	30.57424	74.13792	13:43:21	D	10.70
267	FAZILKA	JALALABAD	S-NPP	30.58049	74.15819	13:43:21	D	12.70
268	FAZILKA	JALALABAD	S-NPP	30.61650	74.14296	13:43:21	D	6.50
269	FAZILKA	JALALABAD	AQUA	30.50600	74.20600	13:39:48	D	22.30
270	FAZILKA	JALALABAD	AQUA	30.57800	74.15200	13:39:48	D	16.70
271	FIROZPUR	FIROZPUR	S-NPP	30.83912	74.55137	13:43:21	D	4.10
272	FIROZPUR	FIROZPUR	S-NPP	30.84255	74.55075	13:43:21	D	4.10
273	FIROZPUR	FIROZPUR	S-NPP	30.87863	74.61056	13:43:21	D	4.90
274	FIROZPUR	FIROZPUR	S-NPP	30.97715	74.67439	13:43:21	D	4.10
275	FIROZPUR	FIROZPUR	S-NPP	31.01610	74.64957	13:43:21	D	4.20
276	FIROZPUR	FIROZPUR	S-NPP	31.01914	74.72499	13:43:21	D	6.10
277	FIROZPUR	FIROZPUR	S-NPP	31.01954	74.64896	13:43:21	D	4.20
278	FIROZPUR	FIROZPUR	S-NPP	31.02449	74.58134	13:43:21	D	4.60
279	FIROZPUR	FIROZPUR	S-NPP	31.03124	74.73627	13:43:21	D	5.60
280	FIROZPUR	FIROZPUR	S-NPP	31.03534	74.76697	13:43:21	D	8.10
281	FIROZPUR	FIROZPUR	S-NPP	31.03651	74.77575	13:43:21	D	5.70
282	FIROZPUR	FIROZPUR	S-NPP	31.04276	74.74319	13:43:21	D	4.00
283	FIROZPUR	FIROZPUR	S-NPP	31.05790	74.80347	13:43:21	D	10.70
284	FIROZPUR	FIROZPUR	S-NPP	31.07479	74.78363	13:43:21	D	10.60
285	FIROZPUR	FIROZPUR	S-NPP	31.07536	74.78804	13:43:21	D	4.50
286	FIROZPUR	FIROZPUR	S-NPP	31.10011	74.76111	13:43:21	D	6.40
287	FIROZPUR	FIROZPUR	AQUA	31.05700	74.80400	13:39:48	D	20.00
288	FIROZPUR	FIROZPUR	AQUA	31.07300	74.77200	13:39:48	D	18.80
289	FIROZPUR	FIROZPUR	AQUA	31.07500	74.78600	13:39:48	D	42.60
290	FIROZPUR	GHALL KHURD	S-NPP	30.74239	74.88728	13:43:21	D	4.50
291	FIROZPUR	GHALL KHURD	S-NPP	30.78938	74.88439	13:43:21	D	5.80
292	FIROZPUR	GHALL KHURD	S-NPP	30.80428	74.80991	13:43:21	D	10.20
293	FIROZPUR	GHALL KHURD	S-NPP	30.81363	74.90714	13:43:21	D	8.00

294	FIROZPUR	GHALL KHURD	S-NPP	30.81414	74.85751	13:43:21	D	7.10
295	FIROZPUR	GHALL KHURD	S-NPP	30.82095	74.80247	13:43:21	D	7.00
296	FIROZPUR	GHALL KHURD	S-NPP	30.82537	74.73020	13:43:21	D	7.10
297	FIROZPUR	GHALL KHURD	S-NPP	30.82855	74.85946	13:43:21	D	4.80
298	FIROZPUR	GHALL KHURD	S-NPP	30.82857	74.64960	13:43:21	D	12.80
299	FIROZPUR	GHALL KHURD	S-NPP	30.83195	74.83190	13:43:21	D	7.40
300	FIROZPUR	GHALL KHURD	S-NPP	30.90069	74.77592	13:43:21	D	4.70
301	FIROZPUR	GHALL KHURD	S-NPP	30.93445	74.71175	13:43:21	D	6.60
302	FIROZPUR	GHALL KHURD	S-NPP	30.93688	74.75604	13:43:21	D	5.60
303	FIROZPUR	GHALL KHURD	S-NPP	30.97377	74.78242	13:43:21	D	5.40
304	FIROZPUR	GHALL KHURD	S-NPP	30.98874	74.78874	13:43:21	D	4.40
305	FIROZPUR	GHALL KHURD	S-NPP	30.99044	74.74803	13:43:21	D	2.40
306	FIROZPUR	GHALL KHURD	S-NPP	31.03136	74.79016	13:43:21	D	5.80
307	FIROZPUR	GURUHAR SAHAI	S-NPP	30.66733	74.28429	13:43:21	D	5.70
308	FIROZPUR	GURUHAR SAHAI	S-NPP	30.69374	74.22387	13:43:21	D	7.60
309	FIROZPUR	GURUHAR SAHAI	S-NPP	30.76123	74.28497	13:43:21	D	7.80
310	FIROZPUR	GURUHAR SAHAI	S-NPP	30.77083	74.27888	13:43:21	D	7.90
311	FIROZPUR	MAKHU	S-NPP	31.02759	75.03144	13:43:21	D	5.70
312	FIROZPUR	MAKHU	S-NPP	31.04355	74.82858	13:43:21	D	4.50
313	FIROZPUR	MAKHU	S-NPP	31.05145	75.07774	13:43:21	D	7.30
314	FIROZPUR	MAKHU	S-NPP	31.05254	75.00418	13:43:21	D	7.70
315	FIROZPUR	MAKHU	S-NPP	31.05363	74.95834	13:43:21	D	10.90
316	FIROZPUR	MAKHU	S-NPP	31.05710	74.95773	13:43:21	D	11.30
317	FIROZPUR	MAKHU	S-NPP	31.05769	74.96219	13:43:21	D	14.50
318	FIROZPUR	MAKHU	S-NPP	31.05849	74.80788	13:43:21	D	11.30
319	FIROZPUR	MAKHU	S-NPP	31.06977	74.91908	13:43:21	D	11.70
320	FIROZPUR	MAKHU	S-NPP	31.07265	74.91402	13:43:21	D	7.50
321	FIROZPUR	MAKHU	S-NPP	31.07402	75.00499	13:43:21	D	8.30
322	FIROZPUR	MAKHU	S-NPP	31.07579	75.01841	13:43:21	D	8.40
323	FIROZPUR	MAKHU	S-NPP	31.07685	74.97250	13:43:21	D	6.70
324	FIROZPUR	MAKHU	S-NPP	31.08039	74.99930	13:43:21	D	12.80
325	FIROZPUR	MAKHU	S-NPP	31.08158	75.00824	13:43:21	D	20.50
326	FIROZPUR	MAKHU	S-NPP	31.08610	74.96175	13:43:21	D	9.40

327	FIROZPUR	MAKHU	S-NPP	31.09958	74.97437	13:43:21	D	8.40
328	FIROZPUR	MAKHU	S-NPP	31.10306	74.97376	13:43:21	D	23.90
329	FIROZPUR	MAKHU	S-NPP	31.10538	74.90951	13:43:21	D	6.90
330	FIROZPUR	MAKHU	S-NPP	31.10596	74.91396	13:43:21	D	6.90
331	FIROZPUR	MAKHU	S-NPP	31.10886	74.90889	13:43:21	D	6.40
332	FIROZPUR	MAKHU	S-NPP	31.10944	74.91335	13:43:21	D	6.40
333	FIROZPUR	MAKHU	S-NPP	31.13441	75.07845	13:43:21	D	4.40
334	FIROZPUR	MAKHU	AQUA	31.05500	74.96200	13:39:48	D	16.10
335	FIROZPUR	MAKHU	AQUA	31.10600	74.90300	13:39:48	D	18.00
336	FIROZPUR	MAMDOT	S-NPP	30.80453	74.47318	13:43:21	D	13.70
337	FIROZPUR	MAMDOT	S-NPP	30.80647	74.38621	13:43:21	D	3.40
338	FIROZPUR	MAMDOT	S-NPP	30.81371	74.31087	13:43:21	D	6.60
339	FIROZPUR	MAMDOT	S-NPP	30.81570	74.50716	13:43:21	D	5.10
340	FIROZPUR	MAMDOT	S-NPP	30.83025	74.35571	13:43:21	D	9.60
341	FIROZPUR	MAMDOT	S-NPP	30.86575	74.46295	13:43:21	D	8.90
342	FIROZPUR	MAMDOT	S-NPP	30.87691	74.39085	13:43:21	D	12.50
343	FIROZPUR	MAMDOT	S-NPP	30.88566	74.45496	13:43:21	D	8.80
344	FIROZPUR	MAMDOT	S-NPP	30.90058	74.48740	13:43:21	D	6.30
345	FIROZPUR	MAMDOT	S-NPP	30.90399	74.48679	13:43:21	D	6.30
346	FIROZPUR	MAMDOT	S-NPP	30.91473	74.46286	13:43:21	D	9.70
347	FIROZPUR	MAMDOT	S-NPP	30.91693	74.45945	13:43:21	D	12.80
348	FIROZPUR	MAMDOT	S-NPP	30.91751	74.46374	13:43:21	D	12.80
349	FIROZPUR	MAMDOT	S-NPP	30.91835	74.51502	13:43:21	D	8.00
350	FIROZPUR	MAMDOT	S-NPP	30.94138	74.43305	13:43:21	D	8.50
351	FIROZPUR	MAMDOT	AQUA	30.78100	74.51700	13:39:48	D	20.80
352	FIROZPUR	MAMDOT	AQUA	30.81400	74.31000	13:39:48	D	18.80
353	FIROZPUR	MAMDOT	AQUA	30.81700	74.50200	13:39:48	D	14.40
354	FIROZPUR	MAMDOT	AQUA	30.91300	74.45800	13:39:48	D	26.80
355	FIROZPUR	MAMDOT	AQUA	30.92100	74.44100	13:39:48	D	12.70
356	FIROZPUR	ZIRA	S-NPP	30.90719	74.98694	13:43:21	D	8.80
357	FIROZPUR	ZIRA	S-NPP	30.97459	75.06644	13:43:21	D	8.60
358	FIROZPUR	ZIRA	S-NPP	30.97690	75.05687	13:43:21	D	4.90
359	FIROZPUR	ZIRA	S-NPP	30.98623	75.07356	13:43:21	D	4.20

360	FIROZPUR	ZIRA	S-NPP	31.01423	74.95617	13:43:21	D	9.70
361	FIROZPUR	ZIRA	S-NPP	31.02875	75.04040	13:43:21	D	8.50
362	FIROZPUR	ZIRA	S-NPP	31.03505	74.92520	13:43:21	D	8.20
363	FIROZPUR	ZIRA	AQUA	30.94600	75.05000	13:39:48	D	25.80
364	FIROZPUR	ZIRA	AQUA	30.98800	75.05300	13:39:48	D	13.30
365	FIROZPUR	ZIRA	AQUA	31.01900	75.10700	13:39:48	D	12.80
366	FIROZPUR	ZIRA	AQUA	31.02700	75.03800	13:39:48	D	9.70
367	GURDASPUR	BATALA	S-NPP	31.75562	75.22140	13:43:21	D	12.80
368	GURDASPUR	BATALA	S-NPP	31.76196	75.10364	13:43:21	D	11.40
369	GURDASPUR	BATALA	S-NPP	31.76254	75.10825	13:43:21	D	6.30
370	GURDASPUR	BATALA	S-NPP	31.79950	75.22967	13:43:21	D	5.50
371	GURDASPUR	BATALA	S-NPP	31.80539	75.24773	13:43:21	D	6.10
372	GURDASPUR	BATALA	S-NPP	31.80893	75.24712	13:43:21	D	6.10
373	GURDASPUR	BATALA	S-NPP	31.81129	75.23716	13:43:21	D	5.60
374	GURDASPUR	BATALA	S-NPP	31.82546	75.26334	13:43:21	D	5.70
375	GURDASPUR	BATALA	S-NPP	31.84612	75.25500	13:43:21	D	7.40
376	GURDASPUR	BATALA	S-NPP	31.86610	75.21336	13:43:21	D	6.70
377	GURDASPUR	BATALA	S-NPP	31.86964	75.21273	13:43:21	D	6.70
378	GURDASPUR	BATALA	S-NPP	31.86977	75.27003	13:43:21	D	7.60
379	GURDASPUR	BATALA	S-NPP	31.87245	75.12812	13:43:21	D	6.10
380	GURDASPUR	BATALA	S-NPP	31.87490	75.19753	13:43:21	D	5.30
381	GURDASPUR	BATALA	S-NPP	31.87533	75.17979	13:43:21	D	6.70
382	GURDASPUR	BATALA	S-NPP	31.87766	75.19842	13:43:21	D	5.30
383	GURDASPUR	BATALA	S-NPP	31.90713	75.17426	13:43:21	D	4.00
384	GURDASPUR	BATALA	S-NPP	31.90772	75.17892	13:43:21	D	7.40
385	GURDASPUR	BATALA	AQUA	31.90600	75.17300	13:39:48	D	22.00
386	GURDASPUR	DERA BABA NANAK	S-NPP	31.91523	75.01220	13:43:21	D	5.90
387	GURDASPUR	DERA BABA NANAK	S-NPP	31.92181	75.11950	13:43:21	D	3.80
388	GURDASPUR	DERA BABA NANAK	S-NPP	31.94237	75.11118	13:43:21	D	6.50
389	GURDASPUR	DERA BABA NANAK	S-NPP	31.94529	75.10594	13:43:21	D	6.70
390	GURDASPUR	DERA BABA NANAK	S-NPP	31.94816	75.07233	13:43:21	D	3.40
391	GURDASPUR	DERA BABA NANAK	S-NPP	31.94876	75.07696	13:43:21	D	7.10
392	GURDASPUR	DERA BABA NANAK	S-NPP	31.95008	75.14304	13:43:21	D	4.40

393	GURDASPUR	DERA BABA NANAK	S-NPP	31.95360	75.14243	13:43:21	D	4.40
394	GURDASPUR	DERA BABA NANAK	S-NPP	31.96524	75.09302	13:43:21	D	12.10
395	GURDASPUR	DERA BABA NANAK	S-NPP	31.97355	75.01838	13:43:21	D	3.80
396	GURDASPUR	DERA BABA NANAK	S-NPP	31.97526	75.08890	13:43:21	D	8.30
397	GURDASPUR	DERA BABA NANAK	S-NPP	31.97585	75.09354	13:43:21	D	4.40
398	GURDASPUR	DERA BABA NANAK	S-NPP	31.97703	75.07439	13:43:21	D	5.80
399	GURDASPUR	DERA BABA NANAK	S-NPP	31.97878	75.08829	13:43:21	D	7.60
400	GURDASPUR	DERA BABA NANAK	S-NPP	31.98055	75.07377	13:43:21	D	5.80
401	GURDASPUR	DERA BABA NANAK	S-NPP	31.98408	75.07317	13:43:21	D	6.80
402	GURDASPUR	DERA BABA NANAK	S-NPP	31.99229	75.02451	13:43:21	D	11.20
403	GURDASPUR	DERA BABA NANAK	S-NPP	31.99522	75.01928	13:43:21	D	4.40
404	GURDASPUR	DERA BABA NANAK	S-NPP	32.00051	75.08922	13:43:21	D	8.80
405	GURDASPUR	DERA BABA NANAK	S-NPP	32.00227	75.07470	13:43:21	D	8.80
406	GURDASPUR	DERA BABA NANAK	S-NPP	32.04400	75.09107	13:43:21	D	2.20
407	GURDASPUR	DERA BABA NANAK	AQUA	31.92500	75.05000	13:39:48	D	16.70
408	GURDASPUR	DERA BABA NANAK	AQUA	31.93500	75.16600	13:39:48	D	32.30
409	GURDASPUR	DERA BABA NANAK	AQUA	31.97400	75.08500	13:39:48	D	29.20
410	GURDASPUR	DHARIWAL	S-NPP	31.85209	75.30182	13:43:21	D	8.10
411	GURDASPUR	DHARIWAL	S-NPP	31.85504	75.29652	13:43:21	D	7.70
412	GURDASPUR	DHARIWAL	S-NPP	31.85563	75.30121	13:43:21	D	20.80
413	GURDASPUR	DHARIWAL	S-NPP	31.87452	75.27879	13:43:21	D	8.70
414	GURDASPUR	DHARIWAL	S-NPP	31.89819	75.30491	13:43:21	D	12.50
415	GURDASPUR	DHARIWAL	S-NPP	31.89878	75.30962	13:43:21	D	12.50
416	GURDASPUR	DHARIWAL	S-NPP	31.90530	75.30368	13:43:21	D	5.90
417	GURDASPUR	DHARIWAL	S-NPP	31.91066	75.20221	13:43:21	D	6.80
418	GURDASPUR	DHARIWAL	S-NPP	31.92364	75.30531	13:43:21	D	8.00
419	GURDASPUR	DHARIWAL	S-NPP	31.92719	75.24712	13:43:21	D	7.60
420	GURDASPUR	DHARIWAL	S-NPP	31.93193	75.31351	13:43:21	D	9.40
421	GURDASPUR	DHARIWAL	S-NPP	31.93252	75.34716	13:43:21	D	7.60
422	GURDASPUR	DHARIWAL	S-NPP	31.93723	75.24059	13:43:21	D	7.50
423	GURDASPUR	DHARIWAL	S-NPP	31.94142	75.38917	13:43:21	D	7.50
424	GURDASPUR	DHARIWAL	S-NPP	31.94677	75.40280	13:43:21	D	8.50
425	GURDASPUR	DHARIWAL	S-NPP	31.95450	75.40633	13:43:21	D	10.80

426	GURDASPUR	DHARIWAL	S-NPP	31.96563	75.26444	13:43:21	D	17.10
427	GURDASPUR	DHARIWAL	S-NPP	31.98114	75.32913	13:43:21	D	5.60
428	GURDASPUR	DHARIWAL	S-NPP	31.99031	75.29636	13:43:21	D	10.50
429	GURDASPUR	DHARIWAL	S-NPP	31.99114	75.29369	13:43:21	D	6.80
430	GURDASPUR	DHARIWAL	S-NPP	31.99833	75.32137	13:43:21	D	7.60
431	GURDASPUR	DHARIWAL	AQUA	31.98600	75.32900	13:39:48	D	13.20
432	GURDASPUR	DHARIWAL	AQUA	31.98900	75.29000	13:39:48	D	10.50
433	GURDASPUR	DINA NAGAR	S-NPP	32.09013	75.48344	13:43:21	D	4.60
434	GURDASPUR	DINA NAGAR	S-NPP	32.09315	75.50750	13:43:21	D	7.10
435	GURDASPUR	DINA NAGAR	S-NPP	32.09372	75.48283	13:43:21	D	11.90
436	GURDASPUR	DINA NAGAR	S-NPP	32.09731	75.48222	13:43:21	D	11.90
437	GURDASPUR	DINA NAGAR	S-NPP	32.10699	75.55948	13:43:21	D	8.90
438	GURDASPUR	DINA NAGAR	S-NPP	32.10741	75.44621	13:43:21	D	5.70
439	GURDASPUR	DINA NAGAR	S-NPP	32.10927	75.49001	13:43:21	D	8.70
440	GURDASPUR	DINA NAGAR	S-NPP	32.11868	75.41984	13:43:21	D	5.40
441	GURDASPUR	DINA NAGAR	S-NPP	32.11962	75.41643	13:43:21	D	12.90
442	GURDASPUR	DINA NAGAR	S-NPP	32.13678	75.49685	13:43:21	D	6.40
443	GURDASPUR	DINA NAGAR	S-NPP	32.14037	75.49624	13:43:21	D	6.40
444	GURDASPUR	DINA NAGAR	S-NPP	32.14526	75.38761	13:43:21	D	3.00
445	GURDASPUR	DINA NAGAR	S-NPP	32.15419	75.40072	13:43:21	D	8.70
446	GURDASPUR	DINA NAGAR	S-NPP	32.15479	75.40551	13:43:21	D	8.70
447	GURDASPUR	DINA NAGAR	S-NPP	32.16194	75.37498	13:43:21	D	7.90
448	GURDASPUR	DINA NAGAR	AQUA	32.09600	75.48900	13:39:48	D	26.30
449	GURDASPUR	DINA NAGAR	AQUA	32.15000	75.40000	13:39:48	D	23.10
450	GURDASPUR	DINA NAGAR	AQUA	32.15100	75.46300	13:39:48	D	14.60
451	GURDASPUR	DORANGALA	S-NPP	32.06909	75.28759	13:43:21	D	11.50
452	GURDASPUR	DORANGALA	S-NPP	32.10486	75.35561	13:43:21	D	5.70
453	GURDASPUR	DORANGALA	S-NPP	32.10661	75.35374	13:43:21	D	8.80
454	GURDASPUR	DORANGALA	S-NPP	32.10843	75.35500	13:43:21	D	5.70
455	GURDASPUR	DORANGALA	S-NPP	32.11079	75.35787	13:43:21	D	5.70
456	GURDASPUR	DORANGALA	S-NPP	32.12202	75.40625	13:43:21	D	8.00
457	GURDASPUR	DORANGALA	S-NPP	32.12449	75.33764	13:43:21	D	7.00
458	GURDASPUR	DORANGALA	S-NPP	32.13218	75.37036	13:43:21	D	14.30

459	GURDASPUR	DORANGALA	S-NPP	32.13277	75.37513	13:43:21	D	11.10
460	GURDASPUR	DORANGALA	S-NPP	32.13576	75.36974	13:43:21	D	34.00
461	GURDASPUR	DORANGALA	S-NPP	32.13635	75.37452	13:43:21	D	8.50
462	GURDASPUR	DORANGALA	S-NPP	32.15182	75.38160	13:43:21	D	9.00
463	GURDASPUR	DORANGALA	AQUA	32.13400	75.36500	13:39:48	D	57.40
464	GURDASPUR	DORANGALA	AQUA	32.13600	75.37800	13:39:48	D	21.10
465	GURDASPUR	FATEHGARH CHURIAN	S-NPP	31.81059	75.06219	13:43:21	D	4.40
466	GURDASPUR	FATEHGARH CHURIAN	S-NPP	31.81411	75.06158	13:43:21	D	4.40
467	GURDASPUR	FATEHGARH CHURIAN	S-NPP	31.82173	75.06494	13:43:21	D	3.90
468	GURDASPUR	FATEHGARH CHURIAN	S-NPP	31.82525	75.06432	13:43:21	D	6.80
469	GURDASPUR	FATEHGARH CHURIAN	S-NPP	31.83590	75.11901	13:43:21	D	4.10
470	GURDASPUR	FATEHGARH CHURIAN	S-NPP	31.86429	75.06345	13:43:21	D	6.60
471	GURDASPUR	FATEHGARH CHURIAN	S-NPP	31.86667	74.96921	13:43:21	D	5.60
472	GURDASPUR	FATEHGARH CHURIAN	S-NPP	31.86726	74.97379	13:43:21	D	5.60
473	GURDASPUR	FATEHGARH CHURIAN	S-NPP	31.88184	74.94785	13:43:21	D	3.50
474	GURDASPUR	FATEHGARH CHURIAN	S-NPP	31.88243	74.95242	13:43:21	D	3.50
475	GURDASPUR	FATEHGARH CHURIAN	S-NPP	31.88593	74.95180	13:43:21	D	3.50
476	GURDASPUR	FATEHGARH CHURIAN	S-NPP	31.88655	75.01254	13:43:21	D	8.20
477	GURDASPUR	FATEHGARH CHURIAN	S-NPP	31.89006	75.01192	13:43:21	D	3.90
478	GURDASPUR	FATEHGARH CHURIAN	S-NPP	31.89063	74.98839	13:43:21	D	5.80
479	GURDASPUR	FATEHGARH CHURIAN	S-NPP	31.89412	74.95969	13:43:21	D	10.50
480	GURDASPUR	FATEHGARH CHURIAN	S-NPP	31.89821	74.96365	13:43:21	D	3.80
481	GURDASPUR	FATEHGARH CHURIAN	S-NPP	31.93496	74.94317	13:43:21	D	7.30
482	GURDASPUR	FATEHGARH CHURIAN	AQUA	31.81400	75.05600	13:39:48	D	20.50
483	GURDASPUR	FATEHGARH CHURIAN	AQUA	31.86100	74.97200	13:39:48	D	10.20
484	GURDASPUR	FATEHGARH CHURIAN	AQUA	31.86700	75.06400	13:39:48	D	12.30
485	GURDASPUR	FATEHGARH CHURIAN	AQUA	31.93000	74.94900	13:39:48	D	16.10
486	GURDASPUR	GURDASPUR	S-NPP	31.95986	75.41999	13:43:21	D	9.80
487	GURDASPUR	GURDASPUR	S-NPP	31.97062	75.47675	13:43:21	D	5.50
488	GURDASPUR	GURDASPUR	S-NPP	31.98590	75.33797	13:43:21	D	6.00
489	GURDASPUR	GURDASPUR	S-NPP	31.98651	75.34268	13:43:21	D	6.00
490	GURDASPUR	GURDASPUR	S-NPP	31.98946	75.33735	13:43:21	D	10.30
491	GURDASPUR	GURDASPUR	S-NPP	31.99839	75.35033	13:43:21	D	3.70

492	GURDASPUR	GURDASPUR	S-NPP	32.00087	75.35249	13:43:21	D	4.70
493	GURDASPUR	GURDASPUR	S-NPP	32.00378	75.36393	13:43:21	D	4.00
494	GURDASPUR	GURDASPUR	S-NPP	32.03168	75.42493	13:43:21	D	9.50
495	GURDASPUR	GURDASPUR	S-NPP	32.06920	75.40391	13:43:21	D	6.20
496	GURDASPUR	GURDASPUR	S-NPP	32.07735	75.26690	13:43:21	D	9.90
497	GURDASPUR	GURDASPUR	S-NPP	32.07929	75.36815	13:43:21	D	10.70
498	GURDASPUR	GURDASPUR	S-NPP	32.08286	75.36753	13:43:21	D	10.70
499	GURDASPUR	GURDASPUR	AQUA	31.95800	75.42000	13:39:48	D	15.80
500	GURDASPUR	GURDASPUR	AQUA	31.98800	75.34200	13:39:48	D	28.80
501	GURDASPUR	KAHNUWAN	S-NPP	31.79814	75.43948	13:43:21	D	4.40
502	GURDASPUR	KAHNUWAN	S-NPP	31.82837	75.46038	13:43:21	D	7.60
503	GURDASPUR	KAHNUWAN	S-NPP	31.83553	75.43005	13:43:21	D	5.00
504	GURDASPUR	KAHNUWAN	S-NPP	31.89273	75.47868	13:43:21	D	14.20
505	GURDASPUR	KAHNUWAN	S-NPP	31.89334	75.48346	13:43:21	D	14.20
506	GURDASPUR	KAHNUWAN	S-NPP	31.89570	75.47330	13:43:21	D	9.90
507	GURDASPUR	KAHNUWAN	S-NPP	31.90589	75.49596	13:43:21	D	11.90
508	GURDASPUR	KAHNUWAN	S-NPP	31.90677	75.49253	13:43:21	D	9.50
509	GURDASPUR	KAHNUWAN	S-NPP	31.91634	75.48112	13:43:21	D	10.50
510	GURDASPUR	KAHNUWAN	AQUA	31.89300	75.46600	13:39:48	D	11.40
511	GURDASPUR	KAHNUWAN	AQUA	31.89500	75.47800	13:39:48	D	26.30
512	GURDASPUR	KAHNUWAN	AQUA	31.91900	75.48000	13:39:48	D	15.20
513	GURDASPUR	KAHNUWAN	AQUA	31.94000	75.48700	13:39:48	D	15.80
514	GURDASPUR	KALANAUR	S-NPP	31.92420	75.16654	13:43:21	D	9.60
515	GURDASPUR	KALANAUR	S-NPP	31.93186	75.16997	13:43:21	D	7.70
516	GURDASPUR	KALANAUR	S-NPP	31.93599	75.17401	13:43:21	D	8.00
517	GURDASPUR	KALANAUR	S-NPP	31.95067	75.14769	13:43:21	D	4.40
518	GURDASPUR	KALANAUR	S-NPP	31.95773	75.14645	13:43:21	D	6.20
519	GURDASPUR	KALANAUR	S-NPP	31.99873	75.16074	13:43:21	D	10.40
520	GURDASPUR	KALANAUR	S-NPP	32.02111	75.13783	13:43:21	D	12.80
521	GURDASPUR	KALANAUR	S-NPP	32.02523	75.14186	13:43:21	D	8.10
522	GURDASPUR	KALANAUR	S-NPP	32.05473	75.17487	13:43:21	D	6.60
523	GURDASPUR	KALANAUR	AQUA	31.92500	75.16900	13:39:48	D	17.30
524	GURDASPUR	QADIAN	S-NPP	31.75533	75.44678	13:43:21	D	6.30

525	GURDASPUR	QADIAN	S-NPP	31.76841	75.43487	13:43:21	D	4.90
526	GURDASPUR	QADIAN	S-NPP	31.80472	75.35804	13:43:21	D	6.40
527	GURDASPUR	QADIAN	S-NPP	31.82724	75.30611	13:43:21	D	8.00
528	GURDASPUR	QADIAN	S-NPP	31.82842	75.28674	13:43:21	D	3.60
529	GURDASPUR	SRI HARGOBINDPUR	S-NPP	31.61149	75.38805	13:43:21	D	15.20
530	GURDASPUR	SRI HARGOBINDPUR	S-NPP	31.67430	75.39645	13:43:21	D	7.40
531	GURDASPUR	SRI HARGOBINDPUR	S-NPP	31.70482	75.45059	13:43:21	D	10.40
532	GURDASPUR	SRI HARGOBINDPUR	S-NPP	31.70732	75.29642	13:43:21	D	7.80
533	GURDASPUR	SRI HARGOBINDPUR	S-NPP	31.70838	75.44998	13:43:21	D	9.00
534	GURDASPUR	SRI HARGOBINDPUR	S-NPP	31.71377	75.40560	13:43:21	D	6.10
535	GURDASPUR	SRI HARGOBINDPUR	S-NPP	31.73745	75.30554	13:43:21	D	14.60
536	GURDASPUR	SRI HARGOBINDPUR	S-NPP	31.75177	75.44739	13:43:21	D	6.30
537	GURDASPUR	SRI HARGOBINDPUR	AQUA	31.70500	75.44600	13:39:48	D	26.90
538	GURDASPUR	SRI HARGOBINDPUR	AQUA	31.73300	75.30500	13:39:48	D	13.60
539	HOSHIARPUR	DASUYA	S-NPP	31.77152	75.57563	13:43:21	D	9.50
540	HOSHIARPUR	DASUYA	S-NPP	31.80446	75.60440	13:43:21	D	9.40
541	HOSHIARPUR	DASUYA	S-NPP	31.80567	75.61403	13:43:21	D	9.80
542	HOSHIARPUR	GARH SHANKAR	S-NPP	31.24762	76.10487	13:43:21	D	6.10
543	HOSHIARPUR	HAJIPUR	S-NPP	31.95775	75.76078	13:43:21	D	7.50
544	HOSHIARPUR	HOSHIARPUR-2	S-NPP	31.36908	75.82668	13:43:21	D	6.70
545	HOSHIARPUR	MAHILPUR	S-NPP	31.33274	76.01016	13:43:21	D	3.00
546	HOSHIARPUR	MAHILPUR	S-NPP	31.35273	75.90381	13:43:21	D	3.80
547	HOSHIARPUR	MAHILPUR	S-NPP	31.45935	76.04884	13:43:21	D	6.80
548	HOSHIARPUR	MUKERIAN	S-NPP	31.91500	75.56793	13:43:21	D	14.30
549	HOSHIARPUR	MUKERIAN	S-NPP	32.03735	75.65771	13:43:21	D	10.30
550	HOSHIARPUR	MUKERIAN	S-NPP	32.03785	75.65555	13:43:21	D	9.80
551	HOSHIARPUR	TANDA	S-NPP	31.64710	75.49771	13:43:21	D	7.50
552	HOSHIARPUR	TANDA	S-NPP	31.65067	75.49711	13:43:21	D	8.20
553	HOSHIARPUR	TANDA	S-NPP	31.65128	75.53098	13:43:21	D	8.20
554	HOSHIARPUR	TANDA	S-NPP	31.65841	75.50064	13:43:21	D	7.20
555	HOSHIARPUR	TANDA	S-NPP	31.66139	75.49529	13:43:21	D	7.20
556	HOSHIARPUR	TANDA	S-NPP	31.67577	75.58044	13:43:21	D	14.70
557	HOSHIARPUR	TANDA	S-NPP	31.68176	75.59898	13:43:21	D	7.90

558	HOSHIARPUR	TANDA	S-NPP	31.72552	75.55898	13:43:21	D	7.00
559	HOSHIARPUR	TANDA	AQUA	31.67800	75.57900	13:39:48	D	13.50
560	HOSHIARPUR	TANDA	AQUA	31.68000	75.59100	13:39:48	D	15.40
561	JALANDHAR	ADAMPUR	S-NPP	31.36485	75.67516	13:43:21	D	6.40
562	JALANDHAR	ADAMPUR	S-NPP	31.39012	75.78862	13:43:21	D	5.30
563	JALANDHAR	ADAMPUR	S-NPP	31.39655	75.62315	13:43:21	D	8.10
564	JALANDHAR	BHOGPUR	S-NPP	31.48840	75.56878	13:43:21	D	3.00
565	JALANDHAR	JALANDHAR EAST	S-NPP	31.34810	75.65849	13:43:21	D	6.10
566	JALANDHAR	JALANDHAR EAST	S-NPP	31.35648	75.75487	13:43:21	D	4.90
567	JALANDHAR	JALANDHAR EAST	S-NPP	31.35947	75.69072	13:43:21	D	7.00
568	JALANDHAR	JALANDHAR WEST	S-NPP	31.44847	75.59977	13:43:21	D	5.30
569	JALANDHAR	LOHIAN	S-NPP	31.09246	75.22796	13:43:21	D	5.80
570	JALANDHAR	LOHIAN	S-NPP	31.09475	75.19035	13:43:21	D	24.50
571	JALANDHAR	LOHIAN	S-NPP	31.09534	75.19491	13:43:21	D	6.20
572	JALANDHAR	LOHIAN	S-NPP	31.09657	75.23190	13:43:21	D	5.10
573	JALANDHAR	LOHIAN	S-NPP	31.10474	75.21187	13:43:21	D	4.40
574	JALANDHAR	LOHIAN	S-NPP	31.10824	75.21127	13:43:21	D	4.40
575	JALANDHAR	LOHIAN	S-NPP	31.11288	75.19186	13:43:21	D	4.40
576	JALANDHAR	LOHIAN	S-NPP	31.11758	75.20034	13:43:21	D	9.60
577	JALANDHAR	LOHIAN	S-NPP	31.11796	75.20176	13:43:21	D	8.30
578	JALANDHAR	LOHIAN	S-NPP	31.12122	75.25564	13:43:21	D	6.90
579	JALANDHAR	LOHIAN	S-NPP	31.13145	75.16687	13:43:21	D	2.90
580	JALANDHAR	LOHIAN	S-NPP	31.13266	75.09260	13:43:21	D	6.40
581	JALANDHAR	LOHIAN	AQUA	31.10300	75.18100	13:39:48	D	18.50
582	JALANDHAR	MEHATPUR	S-NPP	31.05010	75.43237	13:43:21	D	4.60
583	JALANDHAR	MEHATPUR	S-NPP	31.05364	75.43176	13:43:21	D	7.70
584	JALANDHAR	MEHATPUR	S-NPP	31.05591	75.47874	13:43:21	D	4.30
585	JALANDHAR	MEHATPUR	S-NPP	31.07898	75.46055	13:43:21	D	9.40
586	JALANDHAR	MEHATPUR	S-NPP	31.07957	75.46519	13:43:21	D	9.40
587	JALANDHAR	MEHATPUR	S-NPP	31.09611	75.48138	13:43:21	D	3.50
588	JALANDHAR	NAKODAR	S-NPP	31.11090	75.51218	13:43:21	D	3.10
589	JALANDHAR	NAKODAR	S-NPP	31.13107	75.55656	13:43:21	D	11.10
590	JALANDHAR	NAKODAR	S-NPP	31.13404	75.55127	13:43:21	D	6.10

591	JALANDHAR	NAKODAR	S-NPP	31.15604	75.58112	13:43:21	D	8.00
592	JALANDHAR	NAKODAR	S-NPP	31.16497	75.54781	13:43:21	D	6.40
593	JALANDHAR	NAKODAR	S-NPP	31.16936	75.40887	13:43:21	D	3.20
594	JALANDHAR	NUR MAHAL	S-NPP	31.01442	75.59808	13:43:21	D	9.80
595	JALANDHAR	NUR MAHAL	S-NPP	31.01976	75.66927	13:43:21	D	2.90
596	JALANDHAR	NUR MAHAL	S-NPP	31.03285	75.62856	13:43:21	D	9.00
597	JALANDHAR	NUR MAHAL	S-NPP	31.03643	75.65682	13:43:21	D	8.30
598	JALANDHAR	NUR MAHAL	S-NPP	31.04475	75.63617	13:43:21	D	5.40
599	JALANDHAR	NUR MAHAL	S-NPP	31.05658	75.58617	13:43:21	D	4.30
600	JALANDHAR	NUR MAHAL	S-NPP	31.07644	75.58499	13:43:21	D	6.30
601	JALANDHAR	NUR MAHAL	S-NPP	31.10729	75.62785	13:43:21	D	5.10
602	JALANDHAR	PHILLAUR	S-NPP	31.01535	75.86947	13:43:21	D	4.10
603	JALANDHAR	PHILLAUR	S-NPP	31.05500	75.86284	13:43:21	D	4.60
604	JALANDHAR	PHILLAUR	S-NPP	31.05801	75.85743	13:43:21	D	10.20
605	JALANDHAR	PHILLAUR	S-NPP	31.05861	75.86224	13:43:21	D	10.20
606	JALANDHAR	PHILLAUR	S-NPP	31.07667	75.91833	13:43:21	D	4.50
607	JALANDHAR	PHILLAUR	S-NPP	31.08089	75.92257	13:43:21	D	6.10
608	JALANDHAR	PHILLAUR	S-NPP	31.09710	75.87551	13:43:21	D	5.40
609	JALANDHAR	PHILLAUR	S-NPP	31.10071	75.87491	13:43:21	D	5.40
610	JALANDHAR	PHILLAUR	S-NPP	31.17542	75.82066	13:43:21	D	4.50
611	JALANDHAR	PHILLAUR	AQUA	31.19600	75.79000	13:39:48	D	12.70
612	JALANDHAR	RURKA KALAN	S-NPP	31.11202	75.66563	13:43:21	D	6.70
613	JALANDHAR	RURKA KALAN	S-NPP	31.11427	75.77212	13:43:21	D	7.70
614	JALANDHAR	RURKA KALAN	S-NPP	31.11731	75.73750	13:43:21	D	6.50
615	JALANDHAR	RURKA KALAN	S-NPP	31.11787	75.77151	13:43:21	D	8.50
616	JALANDHAR	RURKA KALAN	S-NPP	31.11919	75.63548	13:43:21	D	11.00
617	JALANDHAR	RURKA KALAN	S-NPP	31.12990	75.66262	13:43:21	D	5.70
618	JALANDHAR	RURKA KALAN	S-NPP	31.14482	75.75239	13:43:21	D	7.10
619	JALANDHAR	RURKA KALAN	AQUA	31.14000	75.75300	13:39:48	D	17.70
620	JALANDHAR	SHAHKOT	S-NPP	31.02123	75.31300	13:43:21	D	10.10
621	JALANDHAR	SHAHKOT	S-NPP	31.05492	75.35607	13:43:21	D	5.70
622	JALANDHAR	SHAHKOT	S-NPP	31.06143	75.29398	13:43:21	D	15.90
623	KAPURTHALA	DHILWAN	S-NPP	31.37514	75.19269	13:43:21	D	7.00

624	KAPURTHALA	DHILWAN	S-NPP	31.42032	75.20829	13:43:21	D	5.40
625	KAPURTHALA	DHILWAN	S-NPP	31.42389	75.23589	13:43:21	D	5.60
626	KAPURTHALA	DHILWAN	S-NPP	31.45643	75.32005	13:43:21	D	6.10
627	KAPURTHALA	DHILWAN	S-NPP	31.46313	75.38229	13:43:21	D	6.40
628	KAPURTHALA	DHILWAN	S-NPP	31.46425	75.38057	13:43:21	D	8.40
629	KAPURTHALA	DHILWAN	S-NPP	31.46780	75.37996	13:43:21	D	8.40
630	KAPURTHALA	DHILWAN	S-NPP	31.48854	75.38268	13:43:21	D	18.50
631	KAPURTHALA	DHILWAN	S-NPP	31.48919	75.30164	13:43:21	D	5.00
632	KAPURTHALA	DHILWAN	S-NPP	31.49796	75.42892	13:43:21	D	13.40
633	KAPURTHALA	KAPURTHALA	S-NPP	31.27177	75.28407	13:43:21	D	9.30
634	KAPURTHALA	KAPURTHALA	S-NPP	31.29646	75.27980	13:43:21	D	4.50
635	KAPURTHALA	KAPURTHALA	S-NPP	31.31703	75.27154	13:43:21	D	7.10
636	KAPURTHALA	KAPURTHALA	S-NPP	31.32056	75.27094	13:43:21	D	24.10
637	KAPURTHALA	KAPURTHALA	S-NPP	31.36621	75.34983	13:43:21	D	1.80
638	KAPURTHALA	KAPURTHALA	S-NPP	31.38273	75.33749	13:43:21	D	4.60
639	KAPURTHALA	NADALA	S-NPP	31.52342	75.51606	13:43:21	D	6.20
640	KAPURTHALA	NADALA	S-NPP	31.52639	75.51071	13:43:21	D	12.20
641	KAPURTHALA	NADALA	S-NPP	31.54303	75.46928	13:43:21	D	4.10
642	KAPURTHALA	NADALA	S-NPP	31.54890	75.40102	13:43:21	D	6.40
643	KAPURTHALA	NADALA	S-NPP	31.55066	75.38636	13:43:21	D	4.80
644	KAPURTHALA	NADALA	S-NPP	31.55674	75.52007	13:43:21	D	6.60
645	KAPURTHALA	NADALA	S-NPP	31.56088	75.49519	13:43:21	D	6.50
646	KAPURTHALA	NADALA	S-NPP	31.56268	75.50938	13:43:21	D	4.80
647	KAPURTHALA	NADALA	S-NPP	31.56328	75.51412	13:43:21	D	4.80
648	KAPURTHALA	NADALA	S-NPP	31.56437	75.43677	13:43:21	D	7.70
649	KAPURTHALA	NADALA	S-NPP	31.56445	75.49458	13:43:21	D	5.80
650	KAPURTHALA	NADALA	S-NPP	31.56745	75.51825	13:43:21	D	9.20
651	KAPURTHALA	NADALA	S-NPP	31.56986	75.53722	13:43:21	D	7.10
652	KAPURTHALA	NADALA	S-NPP	31.57046	75.54198	13:43:21	D	7.10
653	KAPURTHALA	NADALA	S-NPP	31.57154	75.46442	13:43:21	D	3.20
654	KAPURTHALA	NADALA	S-NPP	31.57334	75.47858	13:43:21	D	8.60
655	KAPURTHALA	NADALA	S-NPP	31.57866	75.46321	13:43:21	D	5.10
656	KAPURTHALA	NADALA	S-NPP	31.58717	75.42590	13:43:21	D	7.40

657	KAPURTHALA	NADALA	S-NPP	31.59013	75.42058	13:43:21	D	5.50
658	KAPURTHALA	NADALA	S-NPP	31.59530	75.52111	13:43:21	D	13.90
659	KAPURTHALA	NADALA	S-NPP	31.59887	75.52049	13:43:21	D	13.90
660	KAPURTHALA	NADALA	S-NPP	31.60308	75.49554	13:43:21	D	14.60
661	KAPURTHALA	NADALA	S-NPP	31.61555	75.50795	13:43:21	D	11.90
662	KAPURTHALA	NADALA	S-NPP	31.61968	75.54122	13:43:21	D	6.20
663	KAPURTHALA	NADALA	S-NPP	31.62028	75.54598	13:43:21	D	6.20
664	KAPURTHALA	NADALA	S-NPP	31.62087	75.55075	13:43:21	D	6.30
665	KAPURTHALA	NADALA	S-NPP	31.62326	75.54061	13:43:21	D	6.20
666	KAPURTHALA	NADALA	S-NPP	31.62444	75.55014	13:43:21	D	6.30
667	KAPURTHALA	NADALA	S-NPP	31.62509	75.49663	13:43:21	D	9.10
668	KAPURTHALA	NADALA	S-NPP	31.63162	75.51975	13:43:21	D	10.10
669	KAPURTHALA	NADALA	AQUA	31.56100	75.49900	13:39:48	D	13.10
670	KAPURTHALA	NADALA	AQUA	31.56700	75.53600	13:39:48	D	15.20
671	KAPURTHALA	NADALA	AQUA	31.59300	75.51700	13:39:48	D	51.40
672	KAPURTHALA	NADALA	AQUA	31.61900	75.54900	13:39:48	D	11.80
673	KAPURTHALA	PHAGWARA	S-NPP	31.30214	75.76719	13:43:21	D	4.90
674	KAPURTHALA	PHAGWARA	S-NPP	31.30916	75.72852	13:43:21	D	3.70
675	KAPURTHALA	SULTANPUR LODHI	S-NPP	31.22739	75.10500	13:43:21	D	3.50
676	KAPURTHALA	SULTANPUR LODHI	S-NPP	31.27582	75.09191	13:43:21	D	3.20
677	KAPURTHALA	SULTANPUR LODHI	S-NPP	31.30096	75.12001	13:43:21	D	10.30
678	KAPURTHALA	SULTANPUR LODHI	S-NPP	31.30447	75.11940	13:43:21	D	10.30
679	KAPURTHALA	SULTANPUR LODHI	S-NPP	31.30506	75.12395	13:43:21	D	6.50
680	LUDHIANA	DEHLON	S-NPP	30.71545	75.84563	13:43:21	D	27.90
681	LUDHIANA	DEHLON	S-NPP	30.71605	75.85039	13:43:21	D	9.50
682	LUDHIANA	DEHLON	S-NPP	30.74778	75.86943	13:43:21	D	7.30
683	LUDHIANA	DORAHA	S-NPP	30.71203	76.08648	13:43:21	D	9.60
684	LUDHIANA	DORAHA	S-NPP	30.75260	75.93692	13:43:21	D	12.10
685	LUDHIANA	DORAHA	S-NPP	30.75320	75.94172	13:43:21	D	11.00
686	LUDHIANA	DORAHA	S-NPP	30.75620	76.05445	13:43:21	D	13.20
687	LUDHIANA	DORAHA	S-NPP	30.77008	76.01757	13:43:21	D	8.30
688	LUDHIANA	DORAHA	S-NPP	30.79175	75.98444	13:43:21	D	7.50
689	LUDHIANA	DORAHA	S-NPP	30.80538	75.96940	13:43:21	D	7.80

690	LUDHIANA	DORAHA	S-NPP	30.80758	76.04806	13:43:21	D	8.50
691	LUDHIANA	DORAHA	S-NPP	30.80817	76.05292	13:43:21	D	8.00
692	LUDHIANA	DORAHA	AQUA	30.75600	75.93500	13:39:48	D	16.10
693	LUDHIANA	DORAHA	AQUA	30.75700	76.05800	13:39:48	D	15.70
694	LUDHIANA	JAGRAON	S-NPP	30.64823	75.42889	13:43:21	D	7.70
695	LUDHIANA	JAGRAON	S-NPP	30.65000	75.41457	13:43:21	D	10.10
696	LUDHIANA	JAGRAON	S-NPP	30.65352	75.41397	13:43:21	D	10.10
697	LUDHIANA	JAGRAON	S-NPP	30.71918	75.45103	13:43:21	D	7.90
698	LUDHIANA	JAGRAON	S-NPP	30.75074	75.58721	13:43:21	D	7.70
699	LUDHIANA	JAGRAON	S-NPP	30.76089	75.52393	13:43:21	D	5.70
700	LUDHIANA	JAGRAON	S-NPP	30.77862	75.46436	13:43:21	D	12.40
701	LUDHIANA	JAGRAON	S-NPP	30.77979	75.41723	13:43:21	D	10.00
702	LUDHIANA	JAGRAON	S-NPP	30.78568	75.54809	13:43:21	D	8.60
703	LUDHIANA	JAGRAON	S-NPP	30.79509	75.42398	13:43:21	D	9.40
704	LUDHIANA	JAGRAON	S-NPP	30.79869	75.59335	13:43:21	D	13.20
705	LUDHIANA	JAGRAON	S-NPP	30.83193	75.49427	13:43:21	D	5.80
706	LUDHIANA	JAGRAON	AQUA	30.62800	75.41700	13:39:48	D	23.50
707	LUDHIANA	JAGRAON	AQUA	30.64800	75.41200	13:39:48	D	45.20
708	LUDHIANA	JAGRAON	AQUA	30.74700	75.44800	13:39:48	D	13.40
709	LUDHIANA	KHANNA	S-NPP	30.57638	76.09902	13:43:21	D	6.60
710	LUDHIANA	KHANNA	S-NPP	30.57939	76.09360	13:43:21	D	8.70
711	LUDHIANA	KHANNA	S-NPP	30.76949	76.10189	13:43:21	D	7.10
712	LUDHIANA	LUDHIANA-1	S-NPP	30.80412	75.98932	13:43:21	D	10.70
713	LUDHIANA	LUDHIANA-1	S-NPP	30.81194	75.99295	13:43:21	D	5.60
714	LUDHIANA	LUDHIANA-1	S-NPP	30.83496	75.73563	13:43:21	D	5.80
715	LUDHIANA	LUDHIANA-1	S-NPP	30.89617	75.68835	13:43:21	D	13.30
716	LUDHIANA	LUDHIANA-2	S-NPP	30.88917	76.01979	13:43:21	D	4.30
717	LUDHIANA	LUDHIANA-2	S-NPP	30.91709	76.03687	13:43:21	D	10.60
718	LUDHIANA	LUDHIANA-2	S-NPP	30.94018	75.95381	13:43:21	D	5.00
719	LUDHIANA	LUDHIANA-2	S-NPP	30.98476	75.92673	13:43:21	D	5.70
720	LUDHIANA	LUDHIANA-2	S-NPP	30.99908	75.88692	13:43:21	D	4.60
721	LUDHIANA	MACHHIWARA	S-NPP	30.92725	76.27660	13:43:21	D	9.50
722	LUDHIANA	MACHHIWARA	S-NPP	30.92834	76.27440	13:43:21	D	9.80

723	LUDHIANA	MACHHIWARA	S-NPP	30.92837	76.30495	13:43:21	D	13.20
724	LUDHIANA	MACHHIWARA	S-NPP	30.93021	76.30159	13:43:21	D	7.10
725	LUDHIANA	MACHHIWARA	S-NPP	30.95675	76.21091	13:43:21	D	9.10
726	LUDHIANA	MACHHIWARA	S-NPP	30.99151	76.22045	13:43:21	D	12.80
727	LUDHIANA	MACHHIWARA	S-NPP	30.99213	76.19503	13:43:21	D	11.30
728	LUDHIANA	MALoud	S-NPP	30.67152	75.93568	13:43:21	D	8.50
729	LUDHIANA	MALoud	S-NPP	30.67503	75.96447	13:43:21	D	8.80
730	LUDHIANA	MALoud	S-NPP	30.67923	75.96867	13:43:21	D	8.80
731	LUDHIANA	MALoud	S-NPP	30.68829	75.95247	13:43:21	D	14.70
732	LUDHIANA	MALoud	S-NPP	30.71294	75.94350	13:43:21	D	8.10
733	LUDHIANA	PAKHOWAL	S-NPP	30.70005	75.69414	13:43:21	D	5.40
734	LUDHIANA	PAKHOWAL	S-NPP	30.72922	75.78049	13:43:21	D	7.60
735	LUDHIANA	RAIKOT	S-NPP	30.59113	75.56783	13:43:21	D	10.40
736	LUDHIANA	RAIKOT	S-NPP	30.59172	75.57245	13:43:21	D	7.30
737	LUDHIANA	RAIKOT	S-NPP	30.60813	75.47569	13:43:21	D	4.80
738	LUDHIANA	RAIKOT	S-NPP	30.61116	75.52678	13:43:21	D	9.00
739	LUDHIANA	RAIKOT	S-NPP	30.61579	75.47906	13:43:21	D	15.80
740	LUDHIANA	RAIKOT	S-NPP	30.62077	75.65752	13:43:21	D	8.20
741	LUDHIANA	RAIKOT	S-NPP	30.62591	75.52898	13:43:21	D	18.90
742	LUDHIANA	RAIKOT	S-NPP	30.63922	75.55717	13:43:21	D	11.90
743	LUDHIANA	RAIKOT	S-NPP	30.64577	75.52306	13:43:21	D	10.60
744	LUDHIANA	RAIKOT	S-NPP	30.66817	75.52866	13:43:21	D	8.90
745	LUDHIANA	RAIKOT	S-NPP	30.67113	75.52345	13:43:21	D	14.80
746	LUDHIANA	RAIKOT	S-NPP	30.67270	75.70831	13:43:21	D	9.80
747	LUDHIANA	RAIKOT	S-NPP	30.67522	75.58414	13:43:21	D	8.10
748	LUDHIANA	RAIKOT	AQUA	30.61400	75.51700	13:39:48	D	10.50
749	LUDHIANA	RAIKOT	AQUA	30.61600	75.52900	13:39:48	D	18.00
750	LUDHIANA	RAIKOT	AQUA	30.66700	75.52500	13:39:48	D	13.20
751	LUDHIANA	SAMRALA	S-NPP	30.76586	76.10249	13:43:21	D	7.10
752	LUDHIANA	SIDHWAN BET	S-NPP	30.84550	75.59018	13:43:21	D	5.90
753	LUDHIANA	SIDHWAN BET	S-NPP	30.84917	75.40193	13:43:21	D	4.60
754	LUDHIANA	SIDHWAN BET	S-NPP	30.92472	75.59728	13:43:21	D	12.70
755	LUDHIANA	SIDHWAN BET	S-NPP	30.94248	75.40155	13:43:21	D	3.00

756	LUDHIANA	SIDHWAN BET	S-NPP	30.94645	75.49057	13:43:21	D	4.00
757	LUDHIANA	SIDHWAN BET	S-NPP	30.95544	75.38993	13:43:21	D	5.80
758	LUDHIANA	SUDHAR	S-NPP	30.71486	75.58216	13:43:21	D	4.80
759	LUDHIANA	SUDHAR	S-NPP	30.72786	75.57050	13:43:21	D	13.20
760	LUDHIANA	SUDHAR	S-NPP	30.74719	75.58781	13:43:21	D	7.40
761	LUDHIANA	SUDHAR	S-NPP	30.76909	75.58885	13:43:21	D	14.00
762	LUDHIANA	SUDHAR	S-NPP	30.79565	75.71336	13:43:21	D	6.70
763	MANSA	BHIKHI	S-NPP	30.13266	75.40790	13:43:21	D	5.10
764	MANSA	BUDHLADA	AQUA	29.98500	75.64000	13:39:48	D	12.10
765	MANSA	MANSA	S-NPP	30.07123	75.40714	13:43:21	D	3.30
766	MANSA	MANSA	S-NPP	30.09532	75.36850	13:43:21	D	4.70
767	MANSA	SARDULGARH	S-NPP	29.64969	75.30849	13:43:21	D	3.60
768	MANSA	SARDULGARH	AQUA	29.65300	75.32200	13:39:48	D	19.70
769	MOGA	BAGHA PURANA	S-NPP	30.53850	75.00129	13:43:21	D	13.40
770	MOGA	BAGHA PURANA	S-NPP	30.54202	75.02772	13:43:21	D	13.90
771	MOGA	BAGHA PURANA	S-NPP	30.56065	74.97211	13:43:21	D	5.80
772	MOGA	BAGHA PURANA	S-NPP	30.56354	74.96710	13:43:21	D	3.70
773	MOGA	BAGHA PURANA	S-NPP	30.57046	74.99291	13:43:21	D	5.70
774	MOGA	BAGHA PURANA	S-NPP	30.57277	74.98349	13:43:21	D	8.00
775	MOGA	BAGHA PURANA	S-NPP	30.57738	75.01878	13:43:21	D	13.30
776	MOGA	BAGHA PURANA	S-NPP	30.57854	75.00051	13:43:21	D	5.70
777	MOGA	BAGHA PURANA	S-NPP	30.57854	75.02762	13:43:21	D	9.00
778	MOGA	BAGHA PURANA	S-NPP	30.58368	75.12197	13:43:21	D	7.50
779	MOGA	BAGHA PURANA	S-NPP	30.59067	74.98485	13:43:21	D	6.70
780	MOGA	BAGHA PURANA	S-NPP	30.59586	74.97042	13:43:21	D	13.70
781	MOGA	BAGHA PURANA	S-NPP	30.59875	74.96541	13:43:21	D	5.40
782	MOGA	BAGHA PURANA	S-NPP	30.60110	75.09164	13:43:21	D	8.80
783	MOGA	BAGHA PURANA	S-NPP	30.64353	75.17087	13:43:21	D	8.30
784	MOGA	BAGHA PURANA	S-NPP	30.65895	75.01804	13:43:21	D	6.20
785	MOGA	BAGHA PURANA	S-NPP	30.67209	75.19798	13:43:21	D	7.10
786	MOGA	BAGHA PURANA	S-NPP	30.67610	75.00268	13:43:21	D	7.20
787	MOGA	BAGHA PURANA	S-NPP	30.68252	75.16869	13:43:21	D	13.30
788	MOGA	BAGHA PURANA	S-NPP	30.68346	75.16985	13:43:21	D	12.10

789	MOGA	BAGHA PURANA	S-NPP	30.68882	75.01855	13:43:21	D	5.50
790	MOGA	BAGHA PURANA	S-NPP	30.68940	74.99581	13:43:21	D	6.50
791	MOGA	BAGHA PURANA	S-NPP	30.69056	75.00466	13:43:21	D	10.00
792	MOGA	BAGHA PURANA	S-NPP	30.69576	74.96308	13:43:21	D	3.30
793	MOGA	BAGHA PURANA	S-NPP	30.72461	74.93994	13:43:21	D	6.10
794	MOGA	BAGHA PURANA	S-NPP	30.74257	74.96838	13:43:21	D	19.30
795	MOGA	BAGHA PURANA	S-NPP	30.74545	74.96336	13:43:21	D	19.20
796	MOGA	BAGHA PURANA	AQUA	30.53600	75.00700	13:39:48	D	13.30
797	MOGA	BAGHA PURANA	AQUA	30.57300	74.98400	13:39:48	D	16.00
798	MOGA	BAGHA PURANA	AQUA	30.58000	75.02400	13:39:48	D	47.60
799	MOGA	BAGHA PURANA	AQUA	30.59300	75.03500	13:39:48	D	15.00
800	MOGA	BAGHA PURANA	AQUA	30.60200	75.08800	13:39:48	D	11.80
801	MOGA	BAGHA PURANA	AQUA	30.60300	75.03300	13:39:48	D	15.50
802	MOGA	BAGHA PURANA	AQUA	30.66900	74.99700	13:39:48	D	14.80
803	MOGA	BAGHA PURANA	AQUA	30.67900	75.17200	13:39:48	D	22.70
804	MOGA	BAGHA PURANA	AQUA	30.74400	74.95900	13:39:48	D	64.20
805	MOGA	BAGHA PURANA	AQUA	30.74700	74.97200	13:39:48	D	44.70
806	MOGA	KOT ISE KHAN AT DHARAMKOT	S-NPP	30.88421	75.17281	13:43:21	D	12.50
807	MOGA	KOT ISE KHAN AT DHARAMKOT	S-NPP	30.88611	75.26959	13:43:21	D	5.30
808	MOGA	KOT ISE KHAN AT DHARAMKOT	S-NPP	30.89855	75.36536	13:43:21	D	25.00
809	MOGA	KOT ISE KHAN AT DHARAMKOT	S-NPP	30.90188	75.13882	13:43:21	D	4.30
810	MOGA	KOT ISE KHAN AT DHARAMKOT	S-NPP	30.90707	75.17938	13:43:21	D	6.20
811	MOGA	KOT ISE KHAN AT DHARAMKOT	S-NPP	30.90887	75.13760	13:43:21	D	6.20
812	MOGA	KOT ISE KHAN AT DHARAMKOT	S-NPP	30.91008	75.06398	13:43:21	D	32.60
813	MOGA	KOT ISE KHAN AT DHARAMKOT	S-NPP	30.91066	75.06845	13:43:21	D	3.20
814	MOGA	KOT ISE KHAN AT DHARAMKOT	S-NPP	30.91264	75.36295	13:43:21	D	8.00
815	MOGA	KOT ISE KHAN AT DHARAMKOT	S-NPP	30.91762	75.12228	13:43:21	D	20.80
816	MOGA	KOT ISE KHAN AT DHARAMKOT	S-NPP	30.91785	75.31999	13:43:21	D	5.30
817	MOGA	KOT ISE KHAN AT DHARAMKOT	S-NPP	30.91996	75.08514	13:43:21	D	6.90
818	MOGA	KOT ISE KHAN AT DHARAMKOT	S-NPP	30.92577	75.10248	13:43:21	D	6.60
819	MOGA	KOT ISE KHAN AT DHARAMKOT	S-NPP	30.94613	75.28857	13:43:21	D	4.00
820	MOGA	KOT ISE KHAN AT DHARAMKOT	S-NPP	30.94671	75.09882	13:43:21	D	9.80
821	MOGA	KOT ISE KHAN AT DHARAMKOT	S-NPP	30.94965	75.28796	13:43:21	D	5.50

822	MOGA	KOT ISE KHAN AT DHARAMKOT	S-NPP	30.95196	75.11170	13:43:21	D	15.40
823	MOGA	KOT ISE KHAN AT DHARAMKOT	S-NPP	30.95259	75.19921	13:43:21	D	6.30
824	MOGA	KOT ISE KHAN AT DHARAMKOT	S-NPP	30.95953	75.11497	13:43:21	D	2.90
825	MOGA	KOT ISE KHAN AT DHARAMKOT	S-NPP	30.96244	75.10987	13:43:21	D	4.80
826	MOGA	KOT ISE KHAN AT DHARAMKOT	S-NPP	30.96254	75.30441	13:43:21	D	6.40
827	MOGA	KOT ISE KHAN AT DHARAMKOT	S-NPP	30.96605	75.35994	13:43:21	D	5.50
828	MOGA	KOT ISE KHAN AT DHARAMKOT	S-NPP	30.97129	75.20524	13:43:21	D	6.00
829	MOGA	KOT ISE KHAN AT DHARAMKOT	S-NPP	30.97603	75.29741	13:43:21	D	6.00
830	MOGA	KOT ISE KHAN AT DHARAMKOT	S-NPP	30.97712	75.19497	13:43:21	D	8.70
831	MOGA	KOT ISE KHAN AT DHARAMKOT	S-NPP	30.98298	75.21248	13:43:21	D	9.90
832	MOGA	KOT ISE KHAN AT DHARAMKOT	S-NPP	30.99044	75.13261	13:43:21	D	6.40
833	MOGA	KOT ISE KHAN AT DHARAMKOT	S-NPP	30.99063	75.24365	13:43:21	D	6.50
834	MOGA	KOT ISE KHAN AT DHARAMKOT	S-NPP	30.99236	75.22941	13:43:21	D	9.90
835	MOGA	KOT ISE KHAN AT DHARAMKOT	S-NPP	30.99295	75.23396	13:43:21	D	9.90
836	MOGA	KOT ISE KHAN AT DHARAMKOT	S-NPP	30.99355	75.23850	13:43:21	D	7.20
837	MOGA	KOT ISE KHAN AT DHARAMKOT	S-NPP	30.99414	75.24304	13:43:21	D	7.20
838	MOGA	KOT ISE KHAN AT DHARAMKOT	S-NPP	30.99424	75.32700	13:43:21	D	20.40
839	MOGA	KOT ISE KHAN AT DHARAMKOT	S-NPP	30.99646	75.23335	13:43:21	D	9.90
840	MOGA	KOT ISE KHAN AT DHARAMKOT	S-NPP	30.99706	75.23789	13:43:21	D	7.20
841	MOGA	KOT ISE KHAN AT DHARAMKOT	S-NPP	31.00859	75.16177	13:43:21	D	17.10
842	MOGA	KOT ISE KHAN AT DHARAMKOT	S-NPP	31.00889	75.16356	13:43:21	D	43.20
843	MOGA	KOT ISE KHAN AT DHARAMKOT	S-NPP	31.00919	75.16628	13:43:21	D	17.10
844	MOGA	KOT ISE KHAN AT DHARAMKOT	S-NPP	31.01303	75.11208	13:43:21	D	10.30
845	MOGA	KOT ISE KHAN AT DHARAMKOT	S-NPP	31.01652	75.11146	13:43:21	D	10.30
846	MOGA	KOT ISE KHAN AT DHARAMKOT	S-NPP	31.01823	75.15269	13:43:21	D	9.40
847	MOGA	KOT ISE KHAN AT DHARAMKOT	S-NPP	31.02173	75.15208	13:43:21	D	9.40
848	MOGA	KOT ISE KHAN AT DHARAMKOT	S-NPP	31.03108	75.11353	13:43:21	D	5.70
849	MOGA	KOT ISE KHAN AT DHARAMKOT	S-NPP	31.03166	75.11803	13:43:21	D	5.70
850	MOGA	KOT ISE KHAN AT DHARAMKOT	S-NPP	31.04916	75.17044	13:43:21	D	3.80
851	MOGA	KOT ISE KHAN AT DHARAMKOT	S-NPP	31.05377	75.06815	13:43:21	D	3.20
852	MOGA	KOT ISE KHAN AT DHARAMKOT	S-NPP	31.05726	75.06754	13:43:21	D	10.40
853	MOGA	KOT ISE KHAN AT DHARAMKOT	S-NPP	31.05905	75.10865	13:43:21	D	10.50
854	MOGA	KOT ISE KHAN AT DHARAMKOT	S-NPP	31.06016	75.06243	13:43:21	D	10.40

855	MOGA	KOT ISE KHAN AT DHARAMKOT	AQUA	30.89000	75.37600	13:39:48	D	31.70
856	MOGA	KOT ISE KHAN AT DHARAMKOT	AQUA	30.92100	75.08300	13:39:48	D	12.50
857	MOGA	KOT ISE KHAN AT DHARAMKOT	AQUA	30.95700	75.11500	13:39:48	D	15.70
858	MOGA	KOT ISE KHAN AT DHARAMKOT	AQUA	30.97300	75.20500	13:39:48	D	12.10
859	MOGA	KOT ISE KHAN AT DHARAMKOT	AQUA	30.98700	75.22800	13:39:48	D	31.90
860	MOGA	KOT ISE KHAN AT DHARAMKOT	AQUA	30.99000	75.24100	13:39:48	D	15.40
861	MOGA	KOT ISE KHAN AT DHARAMKOT	AQUA	30.99100	75.13400	13:39:48	D	10.50
862	MOGA	KOT ISE KHAN AT DHARAMKOT	AQUA	30.99300	75.32000	13:39:48	D	21.10
863	MOGA	KOT ISE KHAN AT DHARAMKOT	AQUA	30.99500	75.33200	13:39:48	D	18.50
864	MOGA	KOT ISE KHAN AT DHARAMKOT	AQUA	30.99700	75.22600	13:39:48	D	17.80
865	MOGA	KOT ISE KHAN AT DHARAMKOT	AQUA	31.00600	75.15700	13:39:48	D	36.70
866	MOGA	KOT ISE KHAN AT DHARAMKOT	AQUA	31.00800	75.17000	13:39:48	D	23.10
867	MOGA	MOGA-1	S-NPP	30.73817	75.26159	13:43:21	D	9.10
868	MOGA	MOGA-1	S-NPP	30.79270	75.37761	13:43:21	D	8.00
869	MOGA	MOGA-1	S-NPP	30.79334	75.13346	13:43:21	D	9.20
870	MOGA	MOGA-1	S-NPP	30.80614	75.34266	13:43:21	D	5.50
871	MOGA	MOGA-1	S-NPP	30.80966	75.34205	13:43:21	D	5.50
872	MOGA	MOGA-1	S-NPP	30.81994	75.31355	13:43:21	D	7.70
873	MOGA	MOGA-1	S-NPP	30.82056	75.29020	13:43:21	D	8.60
874	MOGA	MOGA-1	S-NPP	30.82407	75.28959	13:43:21	D	8.60
875	MOGA	MOGA-2	S-NPP	30.75721	75.05198	13:43:21	D	8.20
876	MOGA	MOGA-2	S-NPP	30.76068	75.05137	13:43:21	D	10.70
877	MOGA	MOGA-2	S-NPP	30.78878	75.04290	13:43:21	D	19.00
878	MOGA	MOGA-2	S-NPP	30.79226	75.04228	13:43:21	D	19.00
879	MOGA	MOGA-2	S-NPP	30.79634	74.99161	13:43:21	D	5.20
880	MOGA	MOGA-2	S-NPP	30.81429	75.02023	13:43:21	D	6.40
881	MOGA	MOGA-2	S-NPP	30.83738	74.95267	13:43:21	D	8.20
882	MOGA	MOGA-2	S-NPP	30.84666	74.96915	13:43:21	D	5.80
883	MOGA	MOGA-2	S-NPP	30.88520	74.95447	13:43:21	D	5.80
884	MOGA	MOGA-2	AQUA	30.73800	75.09800	13:39:48	D	31.70
885	MOGA	MOGA-2	AQUA	30.76100	75.05200	13:39:48	D	21.00
886	MOGA	MOGA-2	AQUA	30.79000	75.04400	13:39:48	D	9.90
887	MOGA	MOGA-2	AQUA	30.85600	75.06300	13:39:48	D	25.40

888	MOGA	NIHAL SINGH	S-NPP	30.54699	75.28201	13:43:21	D	8.30
889	MOGA	NIHAL SINGH	S-NPP	30.54993	75.41565	13:43:21	D	6.60
890	MOGA	NIHAL SINGH	S-NPP	30.59114	75.20744	13:43:21	D	18.80
891	MOGA	NIHAL SINGH	S-NPP	30.63482	75.24117	13:43:21	D	6.30
892	MOGA	NIHAL SINGH	S-NPP	30.63774	75.26369	13:43:21	D	13.30
893	MOGA	NIHAL SINGH	S-NPP	30.66109	75.25044	13:43:21	D	12.90
894	MOGA	NIHAL SINGH	S-NPP	30.66458	75.24983	13:43:21	D	10.50
895	MOGA	NIHAL SINGH	S-NPP	30.68573	75.32938	13:43:21	D	7.50
896	MOGA	NIHAL SINGH	AQUA	30.54300	75.28300	13:39:48	D	11.90
897	MOGA	NIHAL SINGH	AQUA	30.59000	75.19900	13:39:48	D	33.70
898	MOGA	NIHAL SINGH	AQUA	30.59300	75.21200	13:39:48	D	18.70
899	MOGA	NIHAL SINGH	AQUA	30.60000	75.19700	13:39:48	D	12.00
900	MOGA	NIHAL SINGH	AQUA	30.63900	75.24200	13:39:48	D	28.40
901	MOGA	NIHAL SINGH	AQUA	30.66100	75.25000	13:39:48	D	21.60
902	MOGA	NIHAL SINGH	AQUA	30.68600	75.33000	13:39:48	D	18.50
903	MUKTSAR	KOT BHAI AT GIDDERBAHA	S-NPP	30.27376	74.61224	13:43:21	D	14.80
904	MUKTSAR	KOT BHAI AT GIDDERBAHA	S-NPP	30.27718	74.61162	13:43:21	D	7.60
905	MUKTSAR	KOT BHAI AT GIDDERBAHA	S-NPP	30.29471	74.56564	13:43:21	D	8.50
906	MUKTSAR	KOT BHAI AT GIDDERBAHA	S-NPP	30.42668	74.74460	13:43:21	D	3.20
907	MUKTSAR	KOT BHAI AT GIDDERBAHA	AQUA	30.26000	74.60600	13:39:48	D	12.50
908	MUKTSAR	LAMBI	S-NPP	30.03741	74.46292	13:43:21	D	6.60
909	MUKTSAR	LAMBI	AQUA	29.97600	74.51500	13:39:48	D	23.80
910	MUKTSAR	LAMBI	AQUA	29.98100	74.50700	13:39:48	D	11.00
911	MUKTSAR	LAMBI	AQUA	30.10800	74.51600	13:39:48	D	17.30
912	MUKTSAR	MALOUT	S-NPP	30.22383	74.42619	13:43:21	D	8.30
913	MUKTSAR	MALOUT	S-NPP	30.39396	74.44867	13:43:21	D	36.40
914	MUKTSAR	MALOUT	AQUA	30.39600	74.44300	13:39:48	D	14.40
915	MUKTSAR	MUKTSAR	S-NPP	30.36599	74.44859	13:43:21	D	5.90
916	MUKTSAR	MUKTSAR	S-NPP	30.37857	74.38660	13:43:21	D	12.10
917	MUKTSAR	MUKTSAR	S-NPP	30.38531	74.35948	13:43:21	D	5.30
918	MUKTSAR	MUKTSAR	S-NPP	30.46704	74.42241	13:43:21	D	10.80
919	MUKTSAR	MUKTSAR	S-NPP	30.46802	74.37897	13:43:21	D	16.50
920	MUKTSAR	MUKTSAR	S-NPP	30.49329	74.61385	13:43:21	D	3.80

921	MUKTSAR	MUKTSAR	S-NPP	30.49446	74.62241	13:43:21	D	7.00
922	MUKTSAR	MUKTSAR	S-NPP	30.50334	74.56538	13:43:21	D	9.60
923	MUKTSAR	MUKTSAR	S-NPP	30.51686	74.45825	13:43:21	D	10.70
924	MUKTSAR	MUKTSAR	S-NPP	30.57174	74.57935	13:43:21	D	21.20
925	MUKTSAR	MUKTSAR	S-NPP	30.57515	74.57874	13:43:21	D	5.80
926	MUKTSAR	MUKTSAR	S-NPP	30.60310	74.57809	13:43:21	D	9.40
927	MUKTSAR	MUKTSAR	AQUA	30.54900	74.60600	13:39:48	D	38.00
928	MUKTSAR	MUKTSAR	AQUA	30.55600	74.59800	13:39:48	D	25.70
929	MUKTSAR	MUKTSAR	AQUA	30.55800	74.61200	13:39:48	D	11.40
930	MUKTSAR	MUKTSAR	AQUA	30.57100	74.56500	13:39:48	D	28.30
931	MUKTSAR	MUKTSAR	AQUA	30.57400	74.57900	13:39:48	D	81.40
932	PATHANKOT	BAMIAL	S-NPP	32.32735	75.39748	13:43:21	D	7.30
933	PATHANKOT	BAMIAL	AQUA	32.33600	75.34300	13:39:48	D	10.90
934	PATHANKOT	GHAROTA	S-NPP	32.17327	75.52518	13:43:21	D	6.20
935	PATHANKOT	NAROT JAIMAL SINGH	S-NPP	32.18639	75.42455	13:43:21	D	5.70
936	PATHANKOT	NAROT JAIMAL SINGH	S-NPP	32.24740	75.40141	13:43:21	D	15.10
937	PATHANKOT	NAROT JAIMAL SINGH	S-NPP	32.29217	75.43791	13:43:21	D	9.90
938	PATHANKOT	NAROT JAIMAL SINGH	S-NPP	32.30410	75.41619	13:43:21	D	7.10
939	PATHANKOT	PATHANKOT	S-NPP	32.10344	75.61961	13:43:21	D	4.90
940	PATHANKOT	PATHANKOT	S-NPP	32.12867	75.61527	13:43:21	D	5.10
941	PATIALA	NABHA	S-NPP	30.35493	76.19560	13:43:21	D	11.90
942	PATIALA	NABHA	S-NPP	30.44385	76.07469	13:43:21	D	9.80
943	PATIALA	NABHA	S-NPP	30.48184	76.08320	13:43:21	D	8.30
944	PATIALA	NABHA	S-NPP	30.48934	76.32074	13:43:21	D	16.20
945	PATIALA	PATIALA	S-NPP	30.38228	76.38612	13:43:21	D	4.70
946	PATIALA	PATIALA	S-NPP	30.40804	76.50389	13:43:21	D	10.20
947	PATIALA	PATIALA	S-NPP	30.41013	76.31346	13:43:21	D	6.80
948	PATIALA	PATIALA	S-NPP	30.41675	76.33751	13:43:21	D	10.20
949	PATIALA	PATIALA	S-NPP	30.41841	76.43602	13:43:21	D	5.10
950	PATIALA	PATIALA	S-NPP	30.43804	76.35925	13:43:21	D	6.10
951	PATIALA	PATIALA	S-NPP	30.44396	76.43938	13:43:21	D	6.70
952	PATIALA	PATIALA	AQUA	30.35100	76.28800	13:39:48	D	11.50
953	PATIALA	RAJPURA	S-NPP	30.54985	76.65943	13:43:21	D	5.90

954	PATIALA	SAMANA	S-NPP	30.01670	76.15620	13:43:21	D	4.70
955	PATIALA	SAMANA	S-NPP	30.16597	76.10196	13:43:21	D	5.00
956	PATIALA	SAMANA	S-NPP	30.17301	76.15955	13:43:21	D	15.20
957	PATIALA	SAMANA	S-NPP	30.17495	76.11514	13:43:21	D	16.60
958	PATIALA	SAMANA	S-NPP	30.19603	76.10678	13:43:21	D	6.00
959	PATIALA	SAMANA	AQUA	30.02100	76.15000	13:39:48	D	15.00
960	PATIALA	SAMANA	AQUA	30.14800	76.17600	13:39:48	D	10.50
961	PATIALA	SANAUR	S-NPP	30.16132	76.30669	13:43:21	D	4.70
962	PATIALA	SANAUR	S-NPP	30.22401	76.33445	13:43:21	D	8.70
963	PATIALA	SANAUR	S-NPP	30.26659	76.37766	13:43:21	D	6.30
964	PATIALA	SHAMBU KALAN	S-NPP	30.50406	76.50125	13:43:21	D	16.90
965	SANGRUR	ANDANA	S-NPP	29.83724	75.87673	13:43:21	D	11.50
966	SANGRUR	DHURI	S-NPP	30.31408	75.92874	13:43:21	D	23.10
967	SANGRUR	DHURI	S-NPP	30.36095	75.79319	13:43:21	D	5.40
968	SANGRUR	DHURI	S-NPP	30.40555	75.85760	13:43:21	D	4.20
969	SANGRUR	DHURI	AQUA	30.36000	75.78700	13:39:48	D	10.10
970	SANGRUR	DIRBA	S-NPP	29.96898	75.95161	13:43:21	D	4.90
971	SANGRUR	DIRBA	S-NPP	30.09096	76.00971	13:43:21	D	6.70
972	SANGRUR	DIRBA	S-NPP	30.09389	76.06244	13:43:21	D	9.90
973	SANGRUR	DIRBA	AQUA	29.96700	75.95100	13:39:48	D	15.70
974	SANGRUR	DIRBA	AQUA	30.05100	75.95000	13:39:48	D	12.30
975	SANGRUR	LEHRA GAGA	S-NPP	29.89305	75.85799	13:43:21	D	7.00
976	SANGRUR	MALERKOTLA-1	S-NPP	30.44085	76.02133	13:43:21	D	9.90
977	SANGRUR	MALERKOTLA-1	S-NPP	30.45723	75.82173	13:43:21	D	6.10
978	SANGRUR	MALERKOTLA-1	S-NPP	30.54317	76.06995	13:43:21	D	14.70
979	SANGRUR	MALERKOTLA-1	S-NPP	30.57563	75.97636	13:43:21	D	5.50
980	SANGRUR	MALERKOTLA-1	S-NPP	30.57969	76.03156	13:43:21	D	9.50
981	SANGRUR	MALERKOTLA-1	AQUA	30.54400	76.06900	13:39:48	D	12.00
982	SANGRUR	MALERKOTLA-2	S-NPP	30.59265	75.89758	13:43:21	D	5.90
983	SANGRUR	SHER PUR	S-NPP	30.36823	75.67798	13:43:21	D	10.90
984	SANGRUR	SHER PUR	S-NPP	30.39189	75.77847	13:43:21	D	7.20
985	SANGRUR	SHER PUR	S-NPP	30.44011	75.77191	13:43:21	D	7.10
986	SANGRUR	SHER PUR	S-NPP	30.44183	75.77012	13:43:21	D	5.60

987	SAS NAGAR (MOHALI)	KHARAR	S-NPP	30.57809	76.73072	13:43:21	D	4.10
988	SBS NAGAR	AUR	S-NPP	31.09425	76.02966	13:43:21	D	5.10
989	SBS NAGAR	AUR	S-NPP	31.10967	75.94510	13:43:21	D	10.30
990	SBS NAGAR	BANGA	S-NPP	31.15915	75.95676	13:43:21	D	7.30
991	SBS NAGAR	BANGA	S-NPP	31.19835	75.88586	13:43:21	D	8.50
992	SBS NAGAR	BANGA	S-NPP	31.20967	75.82191	13:43:21	D	6.20
993	SBS NAGAR	BANGA	S-NPP	31.21299	76.00272	13:43:21	D	14.40
994	SBS NAGAR	NAWAN SHAHR	S-NPP	31.14269	76.03430	13:43:21	D	8.90
995	SBS NAGAR	NAWAN SHAHR	S-NPP	31.19180	76.07142	13:43:21	D	3.20
996	TARN TARAN	BHIKHIWIND	S-NPP	31.26949	74.62514	13:43:21	D	6.00
997	TARN TARAN	BHIKHIWIND	S-NPP	31.27501	74.73533	13:43:21	D	5.00
998	TARN TARAN	BHIKHIWIND	S-NPP	31.27699	74.73630	13:43:21	D	6.20
999	TARN TARAN	BHIKHIWIND	S-NPP	31.29989	74.61518	13:43:21	D	7.70
1000	TARN TARAN	BHIKHIWIND	S-NPP	31.30333	74.61456	13:43:21	D	7.70
1001	TARN TARAN	BHIKHIWIND	S-NPP	31.30678	74.61395	13:43:21	D	6.10
1002	TARN TARAN	BHIKHIWIND	S-NPP	31.31197	74.62646	13:43:21	D	6.40
1003	TARN TARAN	BHIKHIWIND	S-NPP	31.32224	74.59771	13:43:21	D	4.50
1004	TARN TARAN	BHIKHIWIND	S-NPP	31.33862	74.72076	13:43:21	D	5.50
1005	TARN TARAN	BHIKHIWIND	S-NPP	31.35153	74.60589	13:43:21	D	4.10
1006	TARN TARAN	BHIKHIWIND	S-NPP	31.35589	74.71767	13:43:21	D	5.90
1007	TARN TARAN	BHIKHIWIND	S-NPP	31.36125	74.78468	13:43:21	D	7.00
1008	TARN TARAN	BHIKHIWIND	S-NPP	31.36170	74.73473	13:43:21	D	3.60
1009	TARN TARAN	BHIKHIWIND	S-NPP	31.36472	74.78406	13:43:21	D	13.30
1010	TARN TARAN	BHIKHIWIND	S-NPP	31.36818	74.78344	13:43:21	D	13.30
1011	TARN TARAN	BHIKHIWIND	S-NPP	31.37066	74.60341	13:43:21	D	8.40
1012	TARN TARAN	BHIKHIWIND	S-NPP	31.37476	74.67367	13:43:21	D	8.20
1013	TARN TARAN	BHIKHIWIND	S-NPP	31.37643	74.67438	13:43:21	D	10.00
1014	TARN TARAN	BHIKHIWIND	S-NPP	31.41850	74.72562	13:43:21	D	5.80
1015	TARN TARAN	BHIKHIWIND	AQUA	31.30300	74.61300	13:39:48	D	16.80
1016	TARN TARAN	BHIKHIWIND	AQUA	31.31500	74.62400	13:39:48	D	12.30
1017	TARN TARAN	BHIKHIWIND	AQUA	31.36400	74.78100	13:39:48	D	40.60
1018	TARN TARAN	CHOHLA SAHIB	S-NPP	31.22220	75.00894	13:43:21	D	11.40
1019	TARN TARAN	CHOHLA SAHIB	S-NPP	31.24079	74.98728	13:43:21	D	15.30

1020	TARN TARAN	CHOHLA SAHIB	S-NPP	31.25928	74.91072	13:43:21	D	6.90
1021	TARN TARAN	CHOHLA SAHIB	S-NPP	31.28396	75.07194	13:43:21	D	8.10
1022	TARN TARAN	CHOHLA SAHIB	S-NPP	31.29155	75.07526	13:43:21	D	7.80
1023	TARN TARAN	CHOHLA SAHIB	S-NPP	31.30316	75.05468	13:43:21	D	10.00
1024	TARN TARAN	CHOHLA SAHIB	S-NPP	31.31742	74.96606	13:43:21	D	4.00
1025	TARN TARAN	CHOHLA SAHIB	S-NPP	31.32960	75.03307	13:43:21	D	12.70
1026	TARN TARAN	CHOHLA SAHIB	S-NPP	31.34765	75.09014	13:43:21	D	8.80
1027	TARN TARAN	CHOHLA SAHIB	AQUA	31.29200	75.07800	13:39:48	D	14.20
1028	TARN TARAN	CHOHLA SAHIB	AQUA	31.34500	75.09200	13:39:48	D	13.00
1029	TARN TARAN	GANDIWIND TATLA	S-NPP	31.43511	74.66384	13:43:21	D	3.90
1030	TARN TARAN	GANDIWIND TATLA	S-NPP	31.44389	74.73015	13:43:21	D	5.50
1031	TARN TARAN	GANDIWIND TATLA	S-NPP	31.45303	74.69228	13:43:21	D	3.40
1032	TARN TARAN	GANDIWIND TATLA	S-NPP	31.45927	74.65952	13:43:21	D	9.50
1033	TARN TARAN	GANDIWIND TATLA	S-NPP	31.45987	74.66393	13:43:21	D	9.50
1034	TARN TARAN	GANDIWIND TATLA	S-NPP	31.46273	74.65889	13:43:21	D	20.70
1035	TARN TARAN	GANDIWIND TATLA	S-NPP	31.46332	74.66331	13:43:21	D	20.70
1036	TARN TARAN	GANDIWIND TATLA	S-NPP	31.47258	74.67973	13:43:21	D	6.00
1037	TARN TARAN	GANDIWIND TATLA	S-NPP	31.47317	74.68414	13:43:21	D	6.30
1038	TARN TARAN	GANDIWIND TATLA	S-NPP	31.47881	74.64700	13:43:21	D	4.00
1039	TARN TARAN	GANDIWIND TATLA	S-NPP	31.48906	74.65619	13:43:21	D	7.40
1040	TARN TARAN	GANDIWIND TATLA	S-NPP	31.49253	74.68272	13:43:21	D	12.30
1041	TARN TARAN	GANDIWIND TATLA	S-NPP	31.49713	74.66380	13:43:21	D	5.50
1042	TARN TARAN	GANDIWIND TATLA	S-NPP	31.52600	74.72208	13:43:21	D	17.40
1043	TARN TARAN	GANDIWIND TATLA	S-NPP	31.53050	74.64875	13:43:21	D	5.80
1044	TARN TARAN	GANDIWIND TATLA	S-NPP	31.53985	74.71960	13:43:21	D	6.80
1045	TARN TARAN	GANDIWIND TATLA	S-NPP	31.53992	74.77422	13:43:21	D	10.90
1046	TARN TARAN	GANDIWIND TATLA	AQUA	31.45000	74.68400	13:39:48	D	17.10
1047	TARN TARAN	GANDIWIND TATLA	AQUA	31.45500	74.65500	13:39:48	D	20.80
1048	TARN TARAN	GANDIWIND TATLA	AQUA	31.45700	74.66900	13:39:48	D	16.70
1049	TARN TARAN	GANDIWIND TATLA	AQUA	31.48700	74.71700	13:39:48	D	16.30
1050	TARN TARAN	KHADUR SAHIB	S-NPP	31.35991	75.15791	13:43:21	D	8.80
1051	TARN TARAN	KHADUR SAHIB	S-NPP	31.43599	75.02489	13:43:21	D	7.80
1052	TARN TARAN	KHADUR SAHIB	S-NPP	31.46397	75.18797	13:43:21	D	6.60

1053	TARN TARAN	KHADUR SAHIB	S-NPP	31.46457	75.16439	13:43:21	D	8.00
1054	TARN TARAN	NAUSHERA PANNUAN	S-NPP	31.32032	74.93340	13:43:21	D	2.90
1055	TARN TARAN	NAUSHERA PANNUAN	S-NPP	31.34588	74.96565	13:43:21	D	5.40
1056	TARN TARAN	NAUSHERA PANNUAN	S-NPP	31.34866	74.85063	13:43:21	D	3.90
1057	TARN TARAN	NAUSHERA PANNUAN	S-NPP	31.34925	74.85509	13:43:21	D	3.90
1058	TARN TARAN	NAUSHERA PANNUAN	S-NPP	31.35172	75.01070	13:43:21	D	4.90
1059	TARN TARAN	NAUSHERA PANNUAN	S-NPP	31.35697	75.02364	13:43:21	D	8.10
1060	TARN TARAN	NAUSHERA PANNUAN	S-NPP	31.36314	74.85262	13:43:21	D	5.40
1061	TARN TARAN	NAUSHERA PANNUAN	S-NPP	31.37326	75.01154	13:43:21	D	7.10
1062	TARN TARAN	NAUSHERA PANNUAN	S-NPP	31.38286	74.86739	13:43:21	D	7.30
1063	TARN TARAN	NAUSHERA PANNUAN	S-NPP	31.39245	74.99432	13:43:21	D	7.50
1064	TARN TARAN	NAUSHERA PANNUAN	S-NPP	31.39594	74.99371	13:43:21	D	7.50
1065	TARN TARAN	NAUSHERA PANNUAN	S-NPP	31.42903	74.97064	13:43:21	D	2.90
1066	TARN TARAN	NAUSHERA PANNUAN	AQUA	31.37400	75.01200	13:39:48	D	13.90
1067	TARN TARAN	NAUSHERA PANNUAN	AQUA	31.39100	74.99400	13:39:48	D	12.70
1068	TARN TARAN	PATTI	S-NPP	31.17771	74.89217	13:43:21	D	9.70
1069	TARN TARAN	PATTI	S-NPP	31.18354	74.90935	13:43:21	D	9.60
1070	TARN TARAN	PATTI	S-NPP	31.18456	74.86365	13:43:21	D	10.30
1071	TARN TARAN	PATTI	S-NPP	31.18574	74.86449	13:43:21	D	6.50
1072	TARN TARAN	PATTI	S-NPP	31.20249	74.80252	13:43:21	D	13.60
1073	TARN TARAN	PATTI	S-NPP	31.21572	74.76849	13:43:21	D	4.50
1074	TARN TARAN	PATTI	S-NPP	31.21746	74.78173	13:43:21	D	9.60
1075	TARN TARAN	PATTI	S-NPP	31.24245	74.89086	13:43:21	D	6.60
1076	TARN TARAN	PATTI	S-NPP	31.28524	74.86507	13:43:21	D	9.00
1077	TARN TARAN	PATTI	S-NPP	31.28871	74.86446	13:43:21	D	3.40
1078	TARN TARAN	PATTI	S-NPP	31.29947	74.77299	13:43:21	D	5.40
1079	TARN TARAN	PATTI	S-NPP	31.32548	74.80921	13:43:21	D	4.10
1080	TARN TARAN	PATTI	AQUA	31.18200	74.86400	13:39:48	D	21.60
1081	TARN TARAN	PATTI	AQUA	31.21800	74.77200	13:39:48	D	13.50
1082	TARN TARAN	PATTI	AQUA	31.22000	74.78600	13:39:48	D	15.80
1083	TARN TARAN	PATTI	AQUA	31.31700	74.86800	13:39:48	D	15.90
1084	TARN TARAN	TARN TARAN	S-NPP	31.34857	74.79602	13:43:21	D	9.30
1085	TARN TARAN	TARN TARAN	S-NPP	31.35145	74.79096	13:43:21	D	6.30

1086	TARN TARAN	TARN TARAN	S-NPP	31.38441	74.79874	13:43:21	D	6.60
1087	TARN TARAN	TARN TARAN	S-NPP	31.39905	74.85540	13:43:21	D	6.40
1088	TARN TARAN	TARN TARAN	S-NPP	31.40006	74.85636	13:43:21	D	9.30
1089	TARN TARAN	TARN TARAN	S-NPP	31.40932	74.87301	13:43:21	D	16.70
1090	TARN TARAN	TARN TARAN	S-NPP	31.42950	74.75541	13:43:21	D	2.80
1091	TARN TARAN	TARN TARAN	S-NPP	31.43075	74.84634	13:43:21	D	4.80
1092	TARN TARAN	TARN TARAN	S-NPP	31.43364	74.84126	13:43:21	D	4.50
1093	TARN TARAN	TARN TARAN	S-NPP	31.44415	75.00494	13:43:21	D	6.60
1094	TARN TARAN	TARN TARAN	S-NPP	31.44925	74.82476	13:43:21	D	11.30
1095	TARN TARAN	TARN TARAN	S-NPP	31.45326	74.80124	13:43:21	D	5.70
1096	TARN TARAN	TARN TARAN	S-NPP	31.47290	74.78863	13:43:21	D	5.60
1097	TARN TARAN	TARN TARAN	S-NPP	31.48550	74.99304	13:43:21	D	4.90
1098	TARN TARAN	TARN TARAN	S-NPP	31.50023	74.83401	13:43:21	D	18.70
1099	TARN TARAN	TARN TARAN	S-NPP	31.50118	74.83141	13:43:21	D	12.70
1100	TARN TARAN	TARN TARAN	S-NPP	31.51695	74.98751	13:43:21	D	6.20
1101	TARN TARAN	TARN TARAN	AQUA	31.39800	74.85600	13:39:48	D	18.40
1102	TARN TARAN	TARN TARAN	AQUA	31.45300	74.82300	13:39:48	D	11.70
1103	TARN TARAN	VALTOHA	S-NPP	31.12132	74.70786	13:43:21	D	11.20
1104	TARN TARAN	VALTOHA	S-NPP	31.12658	74.53729	13:43:21	D	4.50
1105	TARN TARAN	VALTOHA	S-NPP	31.14325	74.73991	13:43:21	D	5.70
1106	TARN TARAN	VALTOHA	S-NPP	31.18861	74.72374	13:43:21	D	4.90
1107	TARN TARAN	VALTOHA	S-NPP	31.20668	74.54145	13:43:21	D	4.10
1108	TARN TARAN	VALTOHA	S-NPP	31.21581	74.53091	13:43:21	D	8.90
1109	TARN TARAN	VALTOHA	S-NPP	31.21952	74.63735	13:43:21	D	2.90
1110	TARN TARAN	VALTOHA	S-NPP	31.22881	74.68054	13:43:21	D	5.60
1111	TARN TARAN	VALTOHA	S-NPP	31.22886	74.70751	13:43:21	D	5.10
1112	TARN TARAN	VALTOHA	S-NPP	31.23079	74.56384	13:43:21	D	4.10
1113	TARN TARAN	VALTOHA	AQUA	31.20700	74.60000	13:39:48	D	10.50

Details of residue burning events in Haryana on 13-May-2023

S. No.	District	Tehsil / Block	Satellite	Latitude	Longitude	ACQ_TIME	Day / Night	Fire Power (W/m2)
1	AMBALA	AMBALA-I	S-NPP	30.33806	76.77678	13:43:21	D	6.40
2	AMBALA	AMBALA-I	S-NPP	30.40773	76.87910	13:43:21	D	6.20
3	AMBALA	AMBALA-II	S-NPP	30.24642	76.78244	13:43:21	D	5.70
4	AMBALA	AMBALA-II	S-NPP	30.34180	76.77618	13:43:21	D	44.50
5	AMBALA	AMBALA-II	S-NPP	30.34253	76.77842	13:43:21	D	25.60
6	BHIWANI	BAWANI KHERA	S-NPP	28.97566	76.06699	13:43:21	D	3.90
7	CHARKHI DADRI	DADRI-I	S-NPP	28.64576	76.31206	13:43:21	D	42.40
8	CHARKHI DADRI	DADRI-I	S-NPP	28.64934	76.31148	13:43:21	D	9.80
9	FATEHABAD	RATIA	S-NPP	29.64581	75.66685	13:43:21	D	10.40
10	FATEHABAD	RATIA	S-NPP	29.70887	75.51590	13:43:21	D	20.20
11	HISAR	HANSI-I	S-NPP	29.23790	75.86864	13:43:21	D	4.40
12	HISAR	NARNAUND	S-NPP	29.24948	76.18665	13:43:21	D	5.60
13	JHAJJAR	BERI	S-NPP	28.64789	76.50288	13:43:21	D	5.00
14	JIND	JULANA	S-NPP	29.09636	76.41429	13:43:21	D	12.30
15	JIND	JULANA	S-NPP	29.14776	76.43705	13:43:21	D	5.60
16	JIND	JULANA	AQUA	29.09400	76.40900	13:39:48	D	10.60
17	JIND	NARWANA	AQUA	29.64600	76.18400	13:39:48	D	11.10
18	JIND	NARWANA	AQUA	29.64800	76.19600	13:39:48	D	15.50
19	JIND	SAFIDON	S-NPP	29.34698	76.60980	13:43:21	D	6.70
20	JIND	SAFIDON	S-NPP	29.44725	76.61104	13:43:21	D	7.30
21	KAITHAL	GUHLA	S-NPP	29.97239	76.27619	13:43:21	D	6.60
22	KAITHAL	SIWAN	S-NPP	29.85741	76.32263	02:32:38	N	0.50
23	KAITHAL	SIWAN	S-NPP	29.85783	76.32041	02:32:38	N	0.90
24	KARNAL	GHARAUNDA	S-NPP	29.52153	77.02924	13:43:21	D	5.40
25	KARNAL	GHARAUNDA	S-NPP	29.59504	77.03599	13:43:21	D	5.20
26	KARNAL	NILOKHERI	S-NPP	29.79212	76.82767	13:43:21	D	7.50
27	KARNAL	NILOKHERI	S-NPP	29.80950	76.84568	13:43:21	D	9.30
28	KARNAL	NILOKHERI	S-NPP	29.81438	76.81207	13:43:21	D	7.10
29	KARNAL	NILOKHERI	S-NPP	29.86374	76.90840	13:43:21	D	3.10
30	KURUKSHETRA	THANESAR	S-NPP	30.03919	76.77112	13:43:21	D	5.50
31	PANCHKULA	RAIPUR RANI	S-NPP	30.55298	77.03674	13:43:21	D	3.60

32	PANIPAT	SAMALKHA	S-NPP	29.18378	77.12003	13:43:21	D	5.80
33	ROHTAK	KALANAUR	S-NPP	28.82347	76.51288	13:43:21	D	24.50
34	ROHTAK	MEHAM	AQUA	28.89400	76.38000	13:39:48	D	10.30
35	ROHTAK	MEHAM	AQUA	28.90400	76.37800	13:39:48	D	17.10
36	ROHTAK	ROHTAK	S-NPP	28.95034	76.76929	02:32:38	N	1.00
37	SIRSA	NATHUSARI CHOPTA	AQUA	29.54600	75.24400	13:39:48	D	14.00
38	SIRSA	RANIA	S-NPP	29.46959	74.87026	13:43:21	D	11.10
39	SIRSA	RANIA	S-NPP	29.60173	74.58533	13:43:21	D	8.60
40	SIRSA	SIRSA	S-NPP	29.55724	75.13094	13:43:21	D	5.80
41	SONIPAT	GOHANA	S-NPP	28.97143	76.78246	13:43:21	D	11.10
42	SONIPAT	GOHANA	S-NPP	29.06897	76.73393	13:43:21	D	4.90
43	SONIPAT	GOHANA	S-NPP	29.11427	76.73680	13:43:21	D	3.60
44	SONIPAT	GOHANA	AQUA	29.13700	76.85200	13:39:48	D	12.30
45	SONIPAT	MUNDLANA	S-NPP	29.20732	76.67918	13:43:21	D	1.70
46	YAMUNANAGAR	SADHAURA	S-NPP	30.39117	77.18703	13:43:21	D	7.90
47	YAMUNANAGAR	SADHAURA	S-NPP	30.39344	77.18951	13:43:21	D	3.10

Details of residue burning events in Uttar Pradesh on 13-May-2023

S. No.	District	Tehsil / Block	Satellite	Latitude	Longitude	ACQ_TIME	Day / Night	Fire Power (W/m2)
1	AMBEDKARNAGAR	AKBARPUR	S-NPP	26.47205	82.50413	13:43:21	D	5.60
2	AMBEDKARNAGAR	AKBARPUR	S-NPP	26.47248	82.49981	13:43:21	D	8.70
3	AURAIYA	BIDHUNA	S-NPP	26.75452	79.58424	13:43:21	D	9.60
4	BADAUN	GUNNAUR	S-NPP	28.35655	78.31694	13:43:21	D	4.10
5	BAHRAICH	BAHRAICH	S-NPP	27.62338	81.68501	13:43:21	D	6.20
6	BAHRAICH	BAHRAICH	AQUA	27.61800	81.68200	13:39:48	D	15.80
7	BASTI	BHANPUR	S-NPP	26.88394	82.70225	13:43:21	D	2.30
8	CHANDAULI	CHANDAULI	S-NPP	25.24161	83.31264	13:43:21	D	2.60
9	CHANDAULI	CHANDAULI	S-NPP	25.24192	83.31609	13:43:21	D	4.90
10	FATEHPUR	FATEHPUR	S-NPP	25.82456	80.78564	13:43:21	D	11.30
11	FATEHPUR	FATEHPUR	AQUA	25.82400	80.78900	13:39:48	D	10.70
12	GHAZIABAD	MODINAGAR	S-NPP	28.77513	77.60632	02:32:38	N	1.00
13	HAMIRPUR	RATH	AQUA	25.59400	79.45500	13:39:48	D	11.00
14	HAMIRPUR	SARILA	S-NPP	25.78161	79.59771	13:43:21	D	12.10
15	HARDOI	BILGRAM	AQUA	27.20300	80.11200	13:39:48	D	11.00
16	HARDOI	SANDILA	S-NPP	27.28450	80.39568	13:43:21	D	6.30
17	HARDOI	SHAHABAD	S-NPP	27.61179	80.17050	13:43:21	D	5.50
18	HARDOI	SHAHABAD	AQUA	27.70000	80.11500	13:39:48	D	9.20
19	JALAUN	MADHOGARH	AQUA	26.27900	79.15600	13:39:48	D	15.10
20	JALAUN	MADHOGARH	AQUA	26.28000	79.16600	13:39:48	D	29.10
21	JHANSI	GARAUTHA	AQUA	25.66500	79.18500	13:39:48	D	16.70
22	JHANSI	JHANSI	S-NPP	25.52570	78.61028	13:43:21	D	10.90
23	KANPUR DEHAT	SIKANDRA	S-NPP	26.32246	79.69566	13:43:21	D	11.70
24	KANPUR DEHAT	SIKANDRA	AQUA	26.32200	79.69700	13:39:48	D	11.00
25	KHERI	MOHMADI	S-NPP	27.81298	80.05656	13:43:21	D	5.00
26	KHERI	MOHMADI	S-NPP	28.05478	80.25648	13:43:21	D	6.80
27	KHERI	MOHMADI	S-NPP	28.05627	80.25915	13:43:21	D	9.10
28	KHERI	NIGHASAN	S-NPP	28.40702	80.94152	13:43:21	D	3.60
29	MAHOBA	CHARKHARI	AQUA	25.44700	79.70600	13:39:48	D	11.70
30	PILHIBHIT	BISALPUR	S-NPP	28.17237	79.79493	13:43:21	D	3.70

31	PILHIBHIT	BISALPUR	S-NPP	28.27695	79.90221	13:43:21	D	3.30
32	RAMPUR	BILASPUR	S-NPP	28.78353	79.23547	13:43:21	D	4.30
33	RAMPUR	BILASPUR	S-NPP	28.88352	79.29008	13:43:21	D	5.30
34	RAMPUR	BILASPUR	AQUA	28.88400	79.36700	13:39:48	D	8.50
35	RAMPUR	SUAR	S-NPP	29.08018	79.05217	13:43:21	D	3.80
36	RAMPUR	SUAR	S-NPP	29.09886	79.14666	13:43:21	D	7.90
37	SHAHJAHANPUR	PUWANYA	S-NPP	28.13128	79.99808	13:43:21	D	3.50
38	SHAHJAHANPUR	PUWANYA	S-NPP	28.13939	80.11794	13:43:21	D	3.10
39	SHAHJAHANPUR	PUWANYA	S-NPP	28.34413	80.03801	13:43:21	D	5.90
40	SHAHJAHANPUR	SHAHJAHANPUR	S-NPP	27.74279	79.89091	13:43:21	D	6.90
41	SHAHJAHANPUR	SHAHJAHANPUR	S-NPP	27.82954	79.65674	13:43:21	D	8.80
42	SHAHJAHANPUR	SHAHJAHANPUR	S-NPP	27.83425	79.99949	13:43:21	D	6.60
43	SHAHJAHANPUR	SHAHJAHANPUR	S-NPP	27.87639	80.02264	13:43:21	D	8.00
44	SHAHJAHANPUR	SHAHJAHANPUR	S-NPP	27.89066	79.82318	13:43:21	D	4.70
45	SHAHJAHANPUR	SHAHJAHANPUR	S-NPP	27.90991	79.82639	13:43:21	D	5.40
46	SHAHJAHANPUR	SHAHJAHANPUR	S-NPP	27.91038	79.83099	13:43:21	D	5.40
47	SHAHJAHANPUR	SHAHJAHANPUR	S-NPP	27.91322	79.82958	13:43:21	D	5.40
48	SHAHJAHANPUR	SHAHJAHANPUR	AQUA	27.74200	79.88500	13:39:48	D	10.00
49	SHAHJAHANPUR	SHAHJAHANPUR	AQUA	27.83100	79.99700	13:39:48	D	25.20
50	SHAHJAHANPUR	TILHAR	S-NPP	27.95448	79.54645	13:43:21	D	4.20
51	SHAHJAHANPUR	TILHAR	S-NPP	28.15234	79.68613	13:43:21	D	7.60
52	SHAHJAHANPUR	TILHAR	S-NPP	28.22214	79.72796	13:43:21	D	4.50
53	SHAHJAHANPUR	TILHAR	S-NPP	28.22394	79.72569	13:43:21	D	5.10
54	SHARANPUR	NAKUR	S-NPP	29.69865	77.26287	13:43:21	D	2.70
55	SHRAWASTI	BHINGA	S-NPP	27.77430	82.01443	13:43:21	D	7.20
56	SIDDHARTHANAGAR	NAUGARH	S-NPP	27.26539	82.94793	13:43:21	D	0.90
57	SITAPUR	MISRIK	S-NPP	27.46150	80.53279	13:43:21	D	7.40

Details of wheat residue burning events in Madhya Pradesh on 13-May-2023

S. No.	District	Tehsil / Block	Satellite	Latitude	Longitude	ACQ_TIME	Day / Night	Fire Power (W/m ²)
1	ASHOKNAGAR	MUNGAOLI	S-NPP	24.26581	77.96452	02:32:38	N	0.90
2	ASHOKNAGAR	MUNGAOLI	S-NPP	24.26609	77.96703	02:32:38	N	0.50
3	BETUL	MULTAI	S-NPP	21.70054	78.10960	13:43:21	D	24.90
4	BHIND	GOHAD	S-NPP	26.47158	78.27562	02:32:38	N	1.30
5	BHIND	GOHAD	S-NPP	26.47498	78.28165	02:32:38	N	1.30
6	BHIND	GOHAD	AQUA	26.51000	78.43200	13:39:48	D	25.80
7	BHIND	ROUN	S-NPP	26.33861	79.02483	13:43:21	D	9.00
8	BHOPAL	HUZUR	S-NPP	23.39888	77.45297	13:43:21	D	9.90
9	CHHATARPUR	CHHATARPUR	S-NPP	24.81203	79.63255	02:32:38	N	0.30
10	CHHATARPUR	CHHATARPUR	AQUA	24.81000	79.63700	13:39:48	D	10.70
11	CHHATARPUR	NOWGOAN	S-NPP	25.07362	79.61978	13:43:21	D	21.70
12	CHHATARPUR	RAJNAGAR	S-NPP	25.04173	79.93676	13:43:21	D	20.00
13	CHHINDWARA	CHHINDWARA	S-NPP	21.94266	79.02846	13:43:21	D	19.00
14	CHHINDWARA	CHHINDWARA	S-NPP	21.96881	78.95854	13:43:21	D	14.00
15	CHHINDWARA	CHHINDWARA	S-NPP	21.97260	78.95801	13:43:21	D	14.00
16	CHHINDWARA	CHHINDWARA	AQUA	22.04600	78.95900	13:39:48	D	12.30
17	DAMOH	PATERA	AQUA	23.78400	79.81500	13:39:48	D	14.30
18	DAMOH	PATERA	AQUA	23.98300	79.66000	13:39:48	D	8.20
19	DEWAS	KHATEGOAN	S-NPP	22.53935	76.86343	02:32:38	N	0.40
20	DEWAS	TONK KHURD	S-NPP	23.01376	76.17306	02:32:38	N	4.00
21	DHAR	MANAWAR	S-NPP	22.26458	75.13229	02:32:38	N	1.80
22	GUNA	GUNA	S-NPP	24.63662	77.14564	02:32:38	N	1.80
23	GWALIOR	DABRA	S-NPP	25.97154	78.35055	02:32:38	N	0.50
24	JABALPUR	JABALPUR	AQUA	23.16600	80.11700	13:39:48	D	19.60
25	JABALPUR	KUNDAM	AQUA	23.23000	80.43200	13:39:48	D	14.10
26	JABALPUR	PATAN	S-NPP	23.29089	79.72638	13:43:21	D	6.80
27	KATNI	BAHURIBAND	AQUA	23.61500	80.10700	13:39:48	D	14.90
28	KATNI	BARBARA	S-NPP	23.74133	80.50424	13:43:21	D	7.10
29	KATNI	BARBARA	S-NPP	23.74180	80.50852	13:43:21	D	7.10
30	KATNI	BARBARA	AQUA	23.73900	80.50400	13:39:48	D	30.90

31	KATNI	BIJERAGHOGARH	S-NPP	23.93821	80.51163	13:43:21	D	15.70
32	KATNI	RITHI	AQUA	23.80200	80.31000	13:39:48	D	7.80
33	MANDLA	MANDLA	S-NPP	22.51628	80.32720	13:43:21	D	9.40
34	MANDLA	MANDLA	S-NPP	22.51860	80.32645	13:43:21	D	10.20
35	NARSHIMAPURA	GOTECAON	AQUA	23.03700	79.38600	13:39:48	D	9.10
36	PANNA	GUNAUR	S-NPP	24.51408	80.07734	13:43:21	D	9.80
37	RAISEN	GOHARGANJ	S-NPP	23.14951	77.58302	13:43:21	D	2.80
38	RAISEN	RAISEN	S-NPP	23.42957	77.55724	02:32:38	N	1.60
39	RAISEN	RAISEN	S-NPP	23.47294	77.75869	02:32:38	N	1.10
40	RAISEN	RAISEN	S-NPP	23.47748	77.75980	02:32:38	N	1.10
41	RAISEN	RAISEN	AQUA	23.21700	77.82100	13:39:48	D	23.10
42	RAISEN	RAISEN	AQUA	23.22100	77.82700	13:39:48	D	16.50
43	RAJGARH	NARSINGHGAR	S-NPP	23.49777	76.84808	13:43:21	D	3.20
44	RAJGARH	NARSINGHGAR	S-NPP	23.68710	76.71440	02:32:38	N	0.40
45	RAJGARH	RAJGARH	S-NPP	23.96954	76.83079	02:32:38	N	2.20
46	RATLAM	JAURA	AQUA	23.81900	75.16200	13:39:48	D	24.40
47	RATLAM	RATLAM	S-NPP	23.51268	75.08804	02:32:38	N	0.90
48	REWA	HUZUR	S-NPP	24.65969	81.20244	13:43:21	D	23.90
49	REWA	HUZUR	S-NPP	24.66420	81.20190	13:43:21	D	23.90
50	REWA	HUZUR	AQUA	24.66600	81.19900	13:39:48	D	18.60
51	SAGAR	BANDA	AQUA	24.37000	79.11100	13:39:48	D	9.80
52	SAGAR	DEVRI	S-NPP	23.39373	78.98472	02:32:38	N	0.60
53	SAGAR	DEVRI	S-NPP	23.39405	78.98513	02:32:38	N	0.70
54	SAGAR	SAGAR	AQUA	23.68700	78.57500	13:39:48	D	39.40
55	SATNA	AMARPATAN	S-NPP	24.45511	81.10870	13:43:21	D	5.90
56	SATNA	AMARPATAN	AQUA	24.45900	81.10500	13:39:48	D	43.00
57	SATNA	MAIHAR	AQUA	24.29800	80.81400	13:39:48	D	10.60
58	SATNA	MAJHGAWAN	S-NPP	24.79293	81.01964	13:43:21	D	6.70
59	SATNA	MAJHGAWAN	S-NPP	24.99168	80.71821	13:43:21	D	6.80
60	SATNA	NAGOD	S-NPP	24.55164	80.56017	13:43:21	D	7.40
61	SATNA	NAGOD	S-NPP	24.61629	80.74329	13:43:21	D	3.30
62	SATNA	NAGOD	AQUA	24.54900	80.43700	13:39:48	D	10.70
63	SATNA	RAGURAJNAGAR	AQUA	24.66000	80.63700	13:39:48	D	8.50
64	SATNA	RAGURAJNAGAR	AQUA	24.71400	80.62200	13:39:48	D	8.50

65	SATNA	RAMPURBAGHLEAN	S-NPP	24.62159	81.11487	13:43:21	D	13.80
66	SATNA	UCHAHAR	AQUA	24.53400	80.71500	13:39:48	D	21.20
67	SEHORE	NASRULLAHGANJ	S-NPP	22.71250	77.34010	13:43:21	D	11.10
68	SEHORE	NASRULLAHGANJ	S-NPP	22.71603	77.33955	13:43:21	D	11.10
69	SEONI	GHANSAUR	S-NPP	22.60898	79.95119	13:43:21	D	19.00
70	SEONI	GHANSAUR	AQUA	22.42900	79.70100	13:39:48	D	14.00
71	SEONI	KEWLARI	S-NPP	22.36718	79.96074	13:43:21	D	11.10
72	SEONI	KEWLARI	S-NPP	22.36735	79.96116	13:43:21	D	11.80
73	SEONI	SEONI	AQUA	22.22800	79.71900	13:39:48	D	13.10
74	SEONI	SEONI	AQUA	22.26400	79.77300	13:39:48	D	12.30
75	SHAJAPUR	GULNA	S-NPP	23.46090	76.44604	13:43:21	D	2.50
76	SHIVPURI	NARWAR	S-NPP	25.64537	78.24991	13:43:21	D	23.10
77	TIKAMGARH	JATARA	AQUA	24.96500	79.07700	13:39:48	D	11.40
78	UJJAIN	BARNAGAR	S-NPP	23.26116	75.44760	02:32:38	N	0.30
79	UJJAIN	KACHROD	S-NPP	23.53007	75.24976	02:32:38	N	0.70
80	UJJAIN	NAGDA	S-NPP	23.42813	75.63593	13:43:21	D	8.50
81	VIDESHA	GYARASPUR	S-NPP	23.66940	77.93337	02:32:38	N	1.90
82	VIDESHA	GYARASPUR	S-NPP	23.67398	77.93449	02:32:38	N	3.50
83	VIDESHA	SIRANJ	S-NPP	24.29660	77.76762	13:43:21	D	8.50

The study used data received from following Satellites at NRSC Ground Station

S. No.	Satellite Name	Sensor	Resolution (meter)	Day / Night Passes
1.	Suomi NPP	VIIRS	375 / 750	Both
2.	Terra	MODIS	1000	Both
3.	Aqua	MODIS	1000	Both

**The wheat mask for the Punjab, Haryana and Uttar Pradesh were provided by MNCFC, MoA&FW, Govt of India
The rabi crop mask for Delhi and Madhya Pradesh were provided by NRSC**

Study Team

ICAR – HQ	Dr S.N. Jha	DDG (AG. ENGG.)	ddgengg@icar.org.in
	Dr Rajbir Singh	ADG (NRM)	rajbirsingh.zpd@gmail.com
ICAR - IARI	Dr V.K. Sehgal	Pr. Scientist & Nodal Officer	iaricreams@gmail.com
	Dr Rajkumar Dhakar	Scientist	raidhakar.iari@gmail.com
	Mr Mohd Jahangir	Lab Assistant (KRISHI)	mjahangir198@gmail.com
ICAR - ATARI	Dr Parvender Sheoran	Director ATARI (Zone-I) Ludhiana	zcu1ldh@gmail.com
	Dr. J.P. Mishra	Director ATARI (Zone-II) Jodhpur	jp.mishra67@gov.in
		Director ATARI (Zone-III) Kanpur	zpdicarkanpur@gmail.com
ICAR - IASRI	Dr Rajender Parsad	Director	rajender.parsad@icar.gov.in

GIS Maps of fire events can be visualized online on ICAR KRISHI Geoportal website: <http://geoportal.icar.gov.in:8080/geoexplorer/composer/>
(Part of KRISHI Portal: <https://krishi.icar.gov.in> initiative)
