

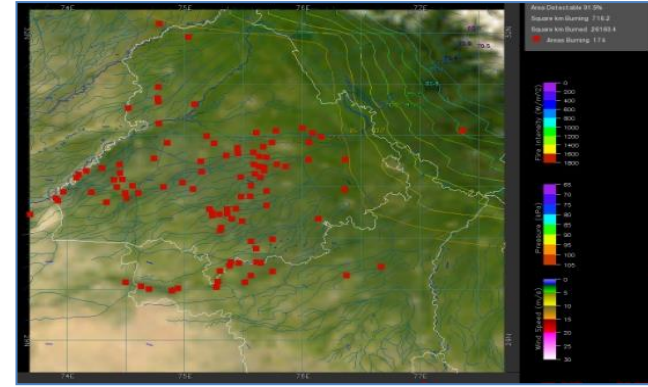
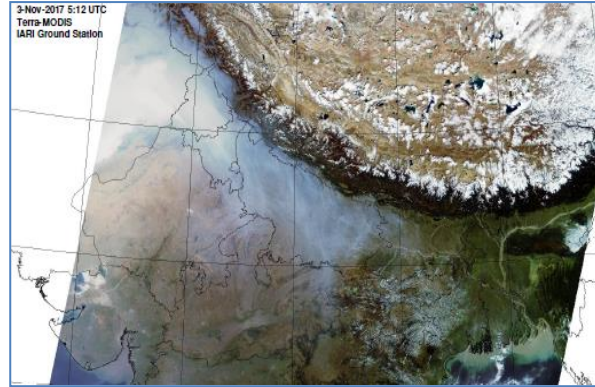


MONITORING WHEAT RESIDUE BURNING IN INDIA USING SATELLITE REMOTE SENSING DURING 2023

**Bulletin
No. 46**

**Events Date:
16-May-2023**

**Issued on:
16-May-2023**



Prepared by:

**Consortium for Research on Agroecosystem Monitoring and Modeling from Space (CREAMS) Laboratory,
Division of Agricultural Physics, ICAR – Indian Agricultural Research Institute, New Delhi – 110012**

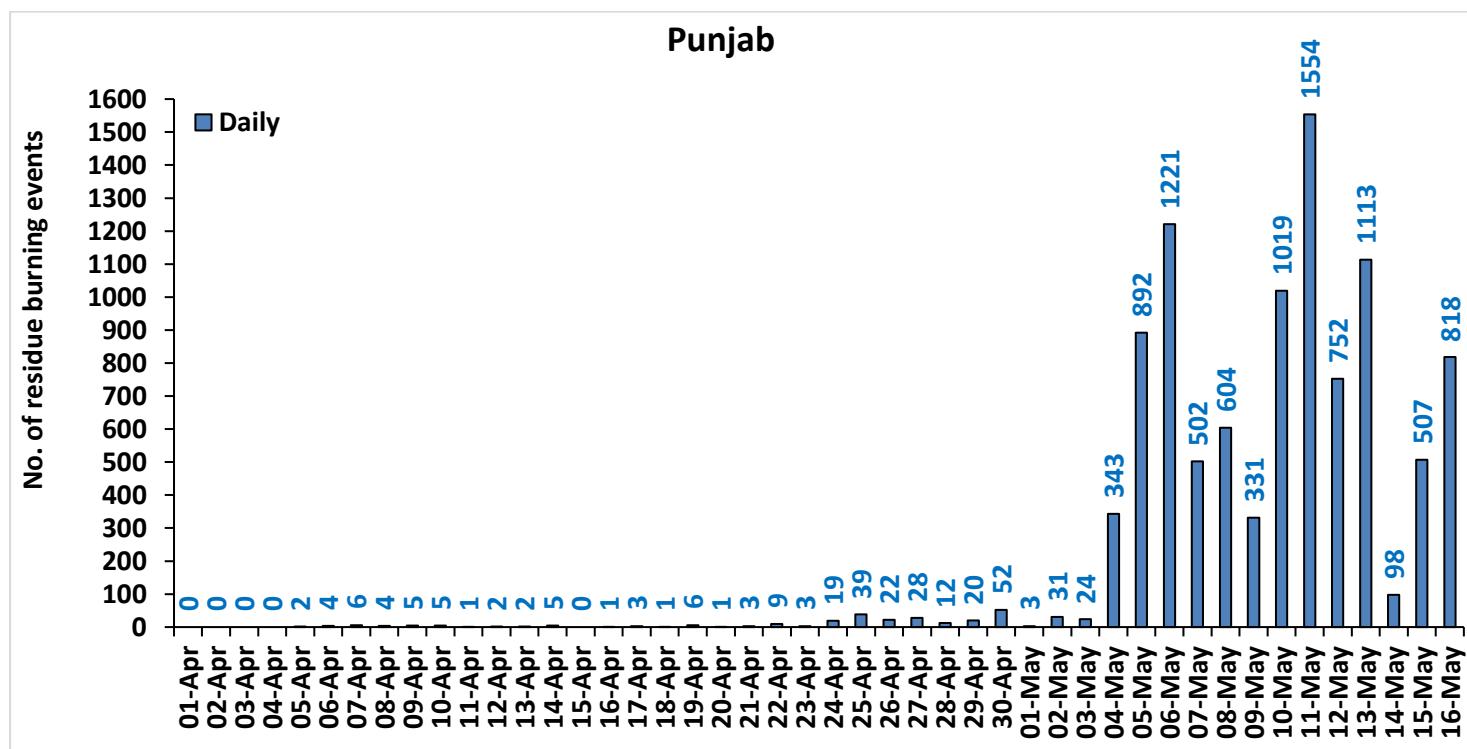
<http://creams.iari.res.in/cms2/>

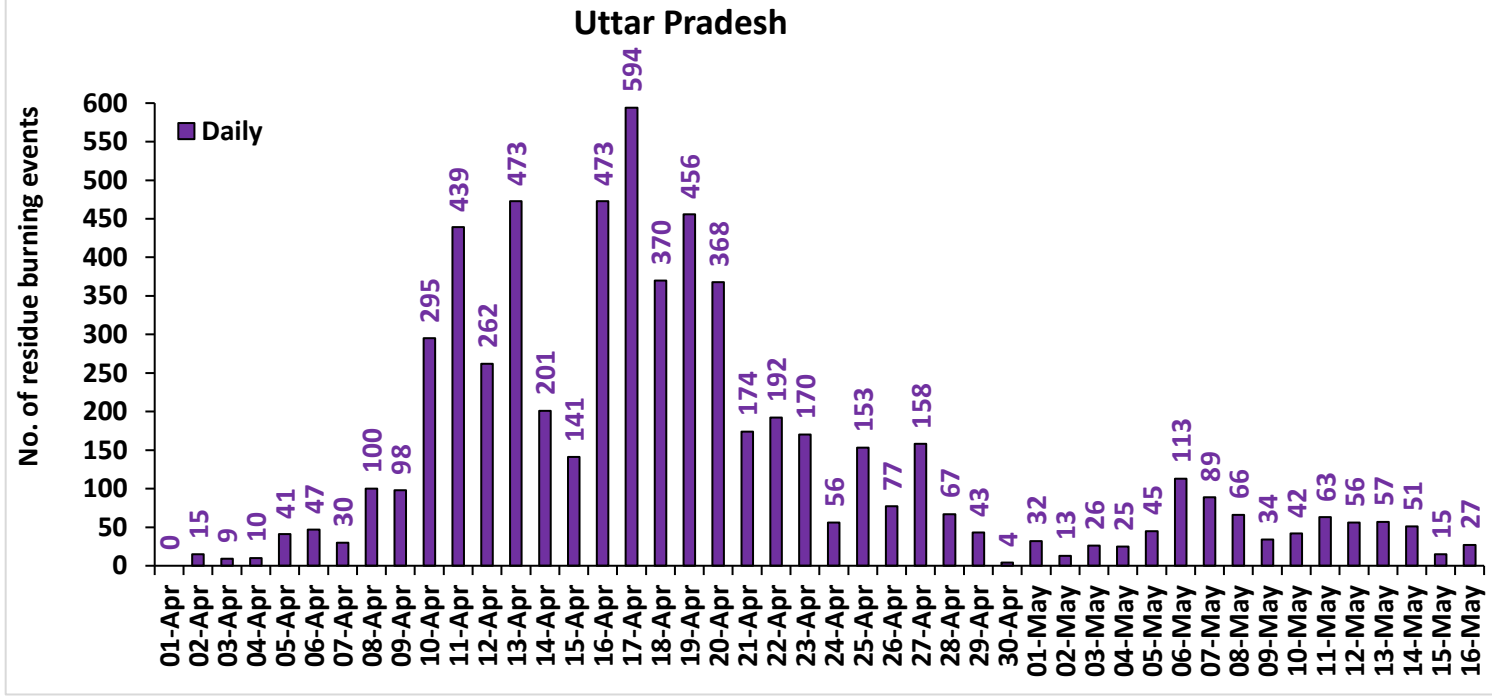
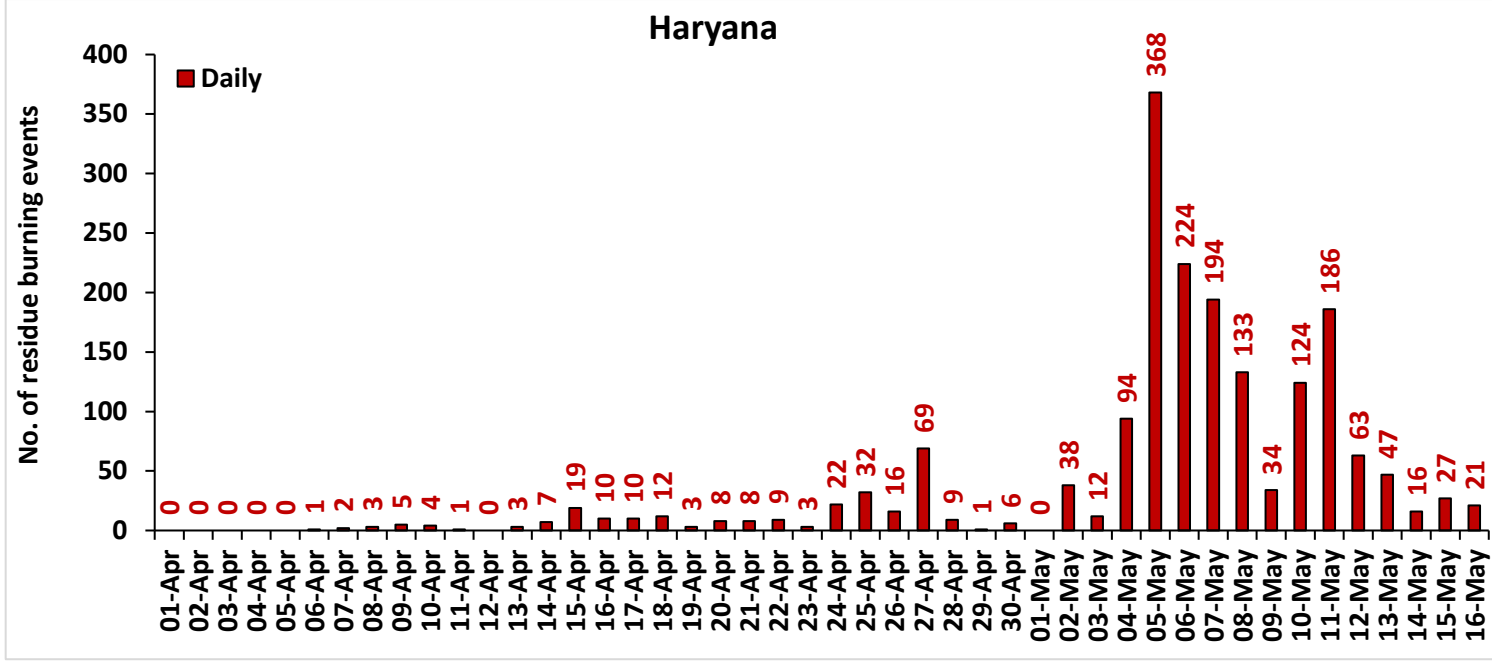


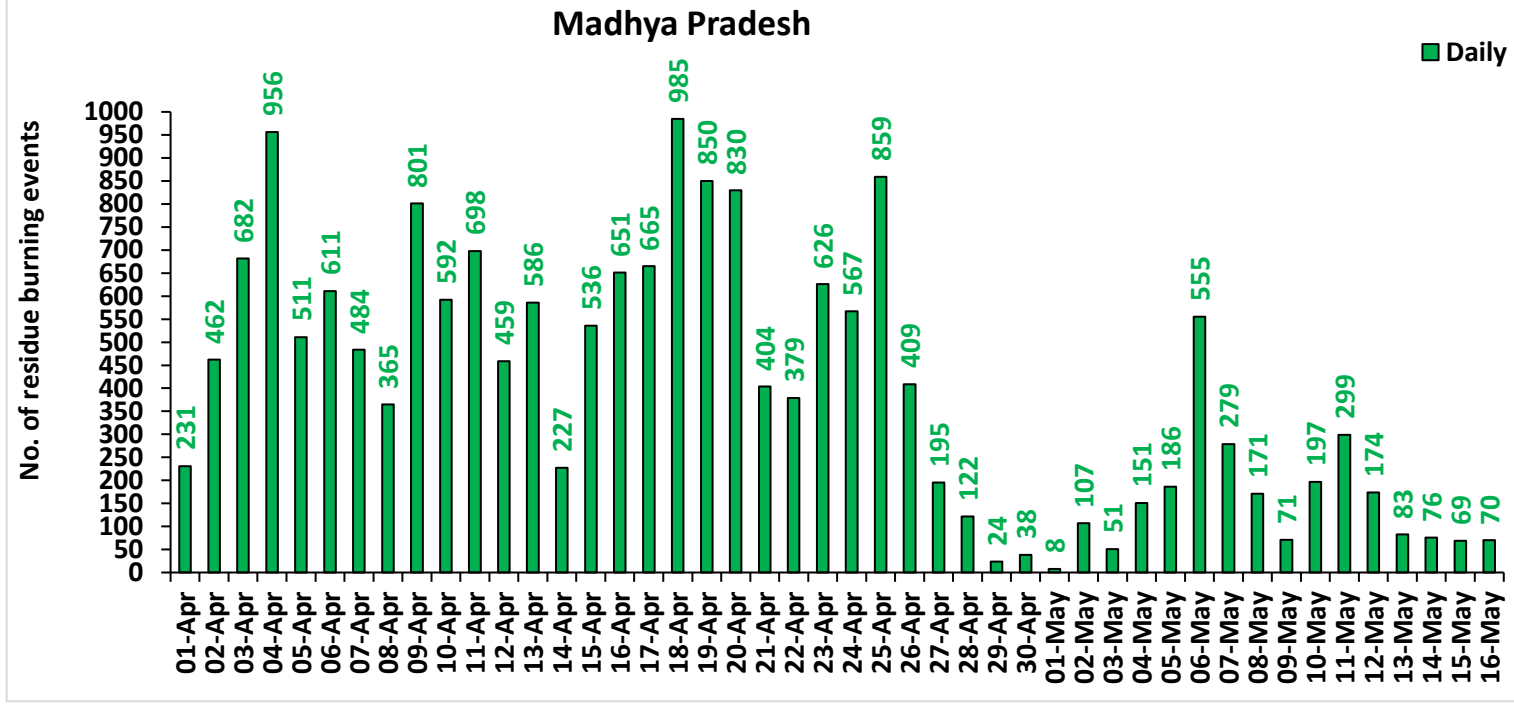
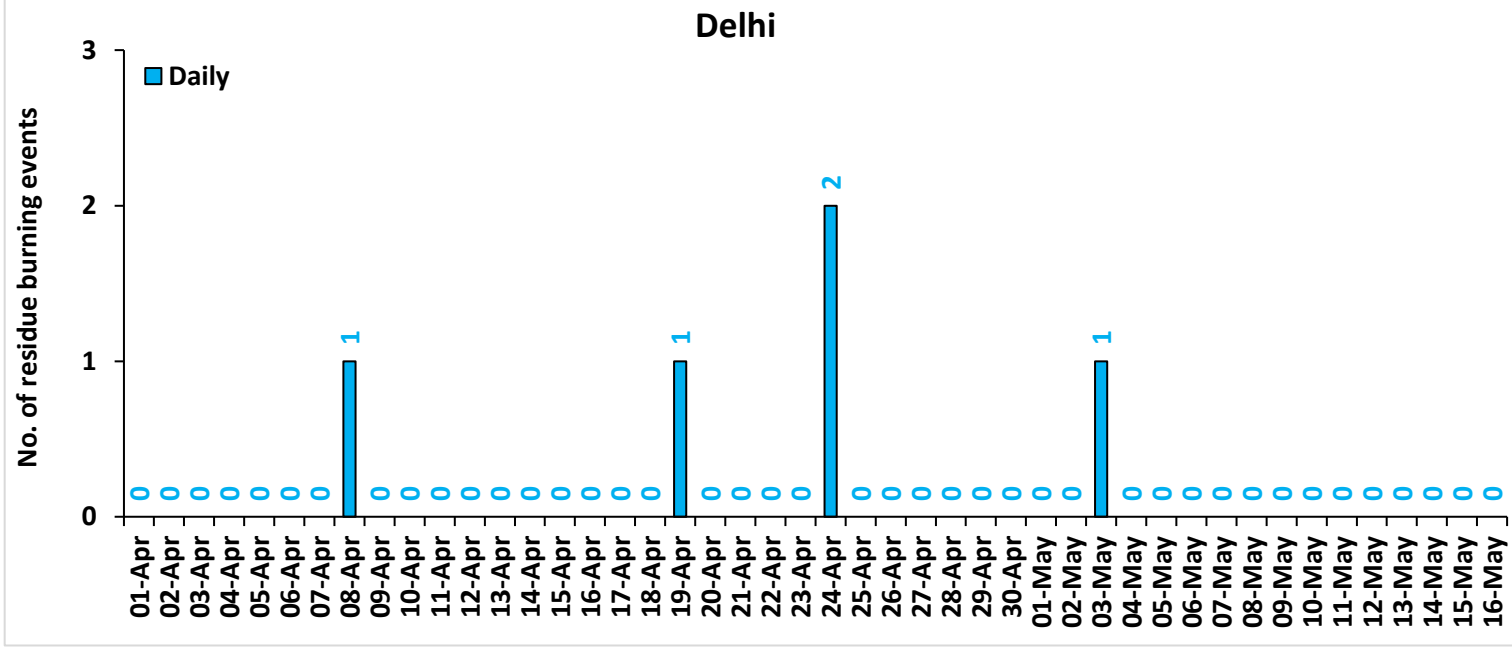
Highlights for 16-May-2023

- The active fire events due to wheat residue burning were monitored using satellite remote sensing, following the new "Standard Protocol for Estimation of Crop Residue Burning Fire Events using Satellite Data".
- Satellites detected **936** residue burning events in the five study States on 16-May-2023.
- The state wise events detected on 16-May-2023 were **818** in Punjab, **21** in Haryana, **00** in Delhi, **27** in Uttar Pradesh and **70** in Madhya Pradesh.
- The number of events has increased from **618** on 15-May-2023 to **936** on 16-May-2023 in the five study states.
- Total **36538** burning events were detected in the five states between 01-Apr-2023 and 16-May-2023, which are distributed as **10067**, **1844**, **6270**, **05**, and **18352** in Punjab, Haryana, UP, Delhi, and MP, respectively.

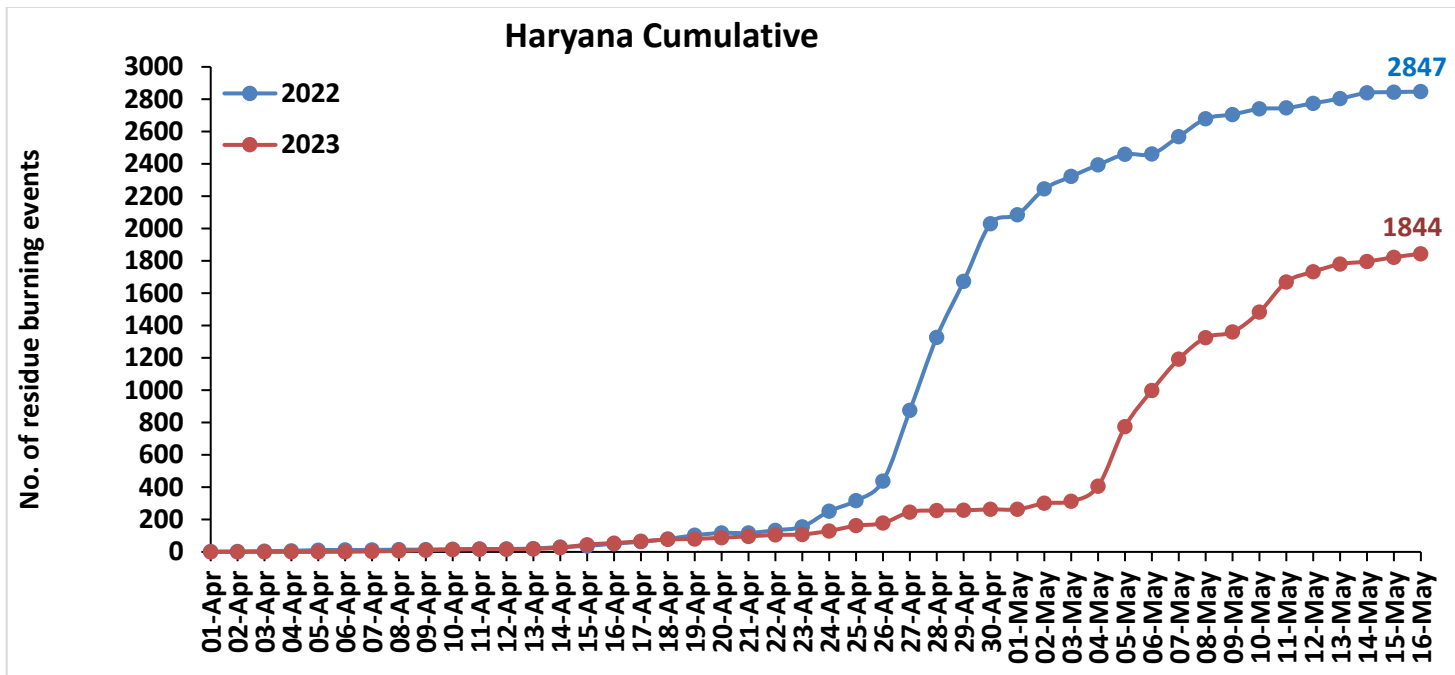
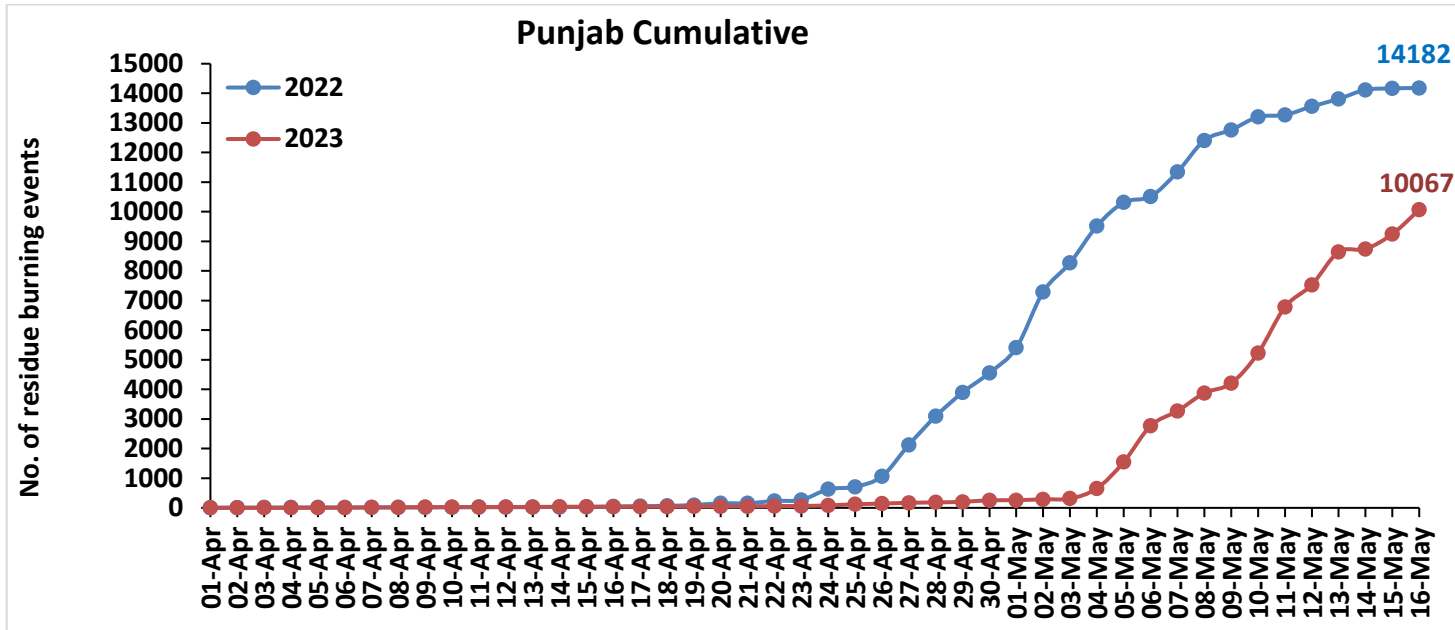
Temporal distribution of wheat residue burning events for the study States in 2023

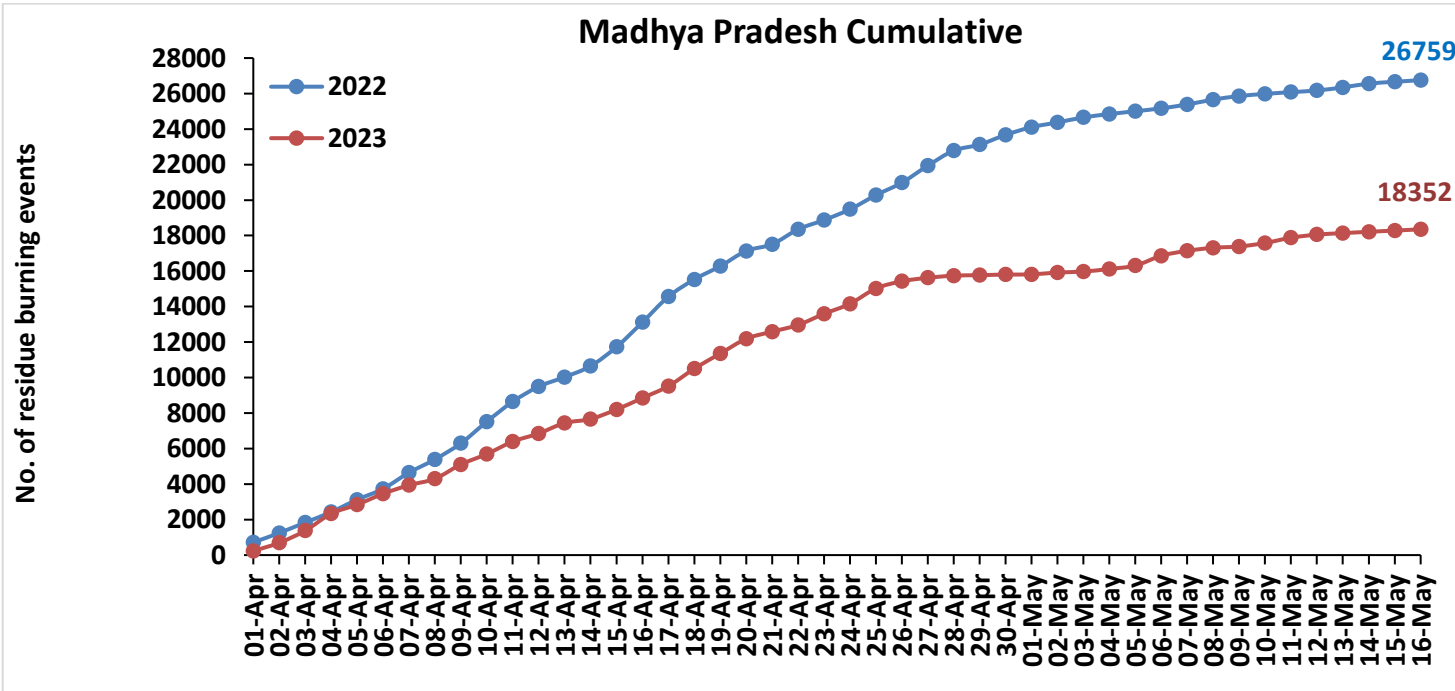
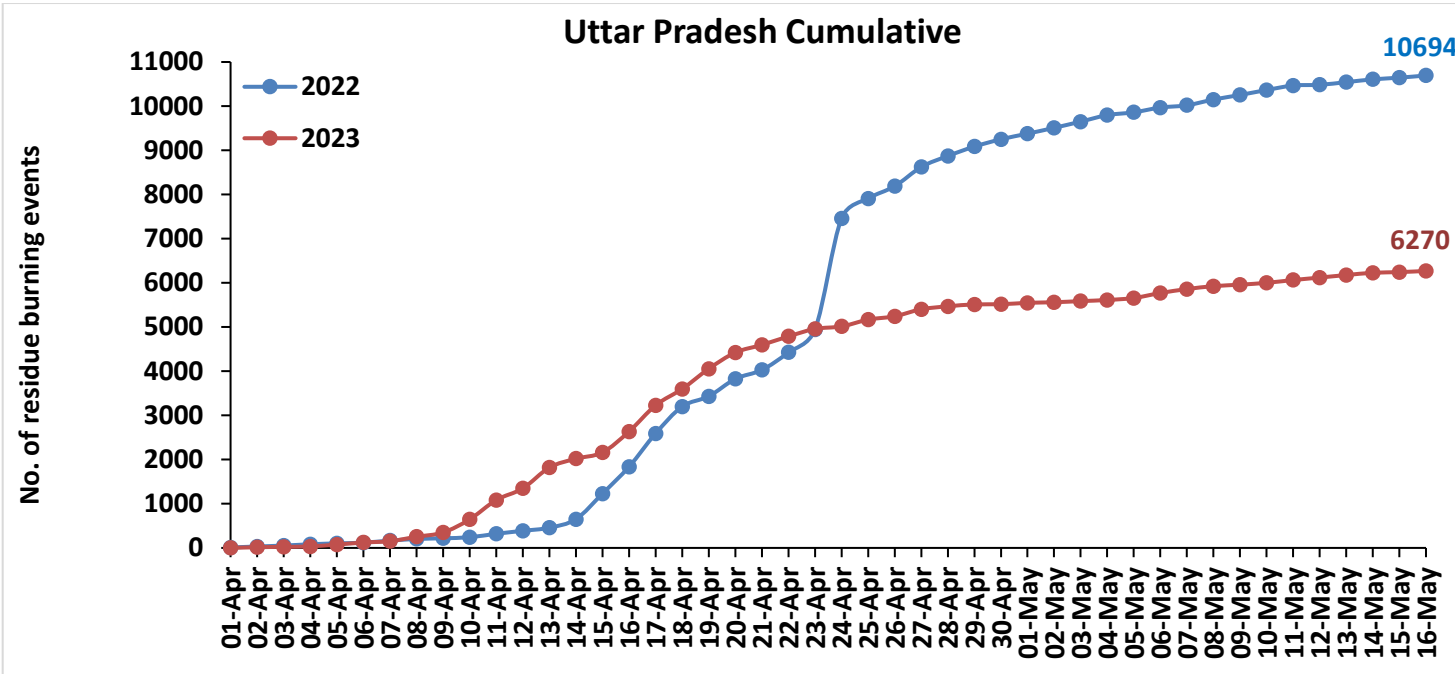




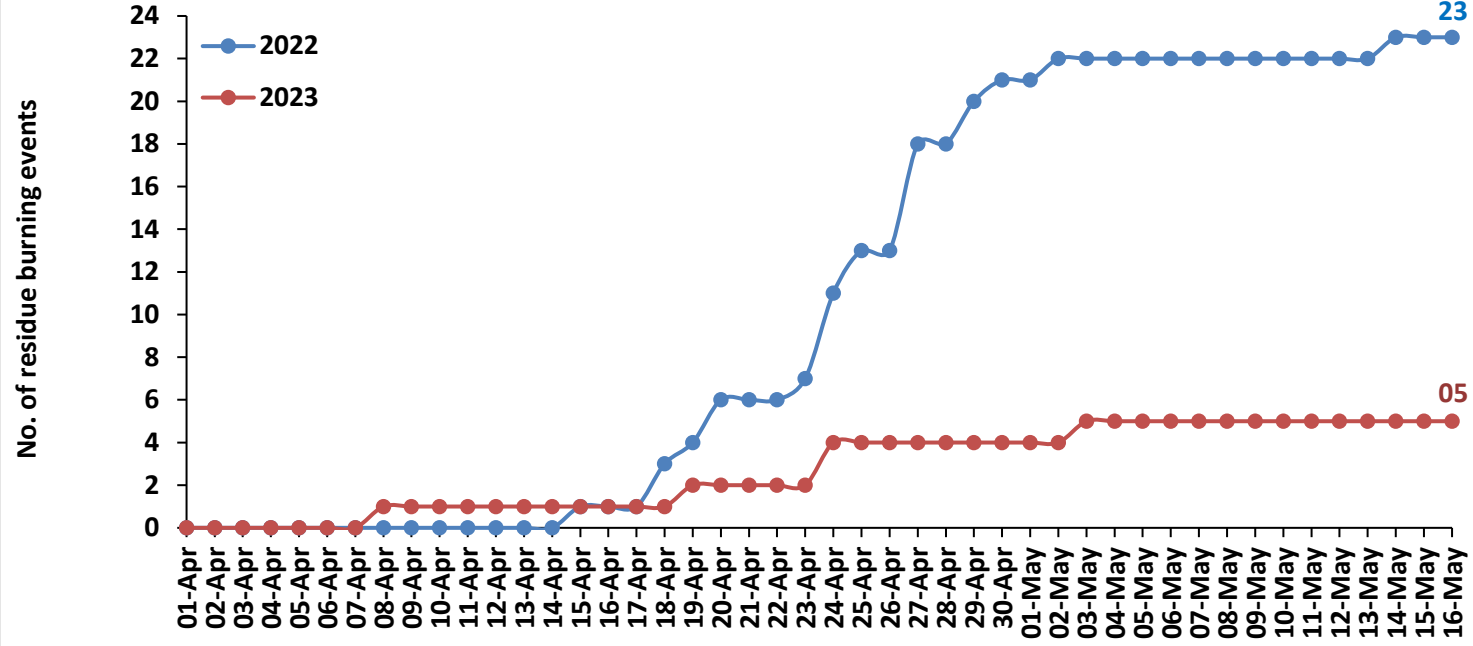


Comparison of residue burning events in current year (2023) with previous year (2022) for the study States





Delhi Cumulative



District-wise cumulative number of wheat residue burning events detected in 2022 and 2023
(Period: 01 April-16 May)

(a) Punjab

District	01 Apr-16 May	
	2022	2023
Amritsar	1229	770
Barnala	471	535
Bathinda	825	570
Faridkot	518	444
Fatehgarh Sahib	70	105
Fazilka	522	377
Firozpur	1416	820
Gurdaspur	1110	843
Hoshiarpur	474	359
Jalandhar	771	409
Kapurthala	702	373
Ludhiana	916	703
Mansa	407	326
Moga	1093	969
Muktsar	697	556
Pathankot	163	79
Patiala	439	407
Rupnagar	66	15
Sangrur	1000	800
SAS NAGAR (Mohali)	26	10
SBS Nagar	208	97
Tarn Taran	1059	500
Total	14182	10067

(b) Haryana

District	01 Apr-16 May	
	2022	2023
AMBALA	92	77
BHIWANI	75	22
CHARKHI DADRI	10	7
FARIDABAD	17	16
FATEHABAD	273	266
GURGAON	7	9
HISAR	148	112
JHAJJAR	121	66
JIND	346	152
KAITHAL	296	187
KARNAL	381	222
KURUKSHETRA	136	54
MAHENDRAGARH	0	0
MEWAT	1	8
PALWAL	33	28
PANCHKULA	3	2
PANIPAT	216	107
REWARI	3	3
ROHTAK	210	94
SIRSA	183	247
SONIPAT	274	129
YAMUNANAGAR	22	36
Total	2847	1844

(c) Uttar Pradesh

District	01 Apr-16 May							
	2022	2023						
			GAUTAMBUDHNAGAR	28	24	MUZAFARNAGAR	54	32
			GAZIPUR	102	46	PILHIBHIT	320	63
AGRA	2	0	GHAZIABAD	13	9	PRATAPGARH	24	15
ALIGARH	19	33	GONDA	21	28	RAIBEARELI	97	17
ALLAHABAD	107	35	GORAKHPUR	965	368	RAMPUR	117	29
AMBEDKARNAGAR	11	13	HAMIRPUR	17	38	SANTKABIRNAGAR	686	430
AURAIYA	101	14	HARDOI	108	76	SANTRAVIDASNAGAR	1	2
AZAMGARH	86	73	JALAUN	23	18	SHAHJAHANPUR	337	98
BADAUN	7	5	JAUNPUR	22	6	SHARANPUR	31	21
BAGHPAT	7	3	JHANSI	102	129	SHRAWASTI	85	43
BAHRAICH	107	43	JYOTIBAPHULE NAGAR	9	5	SIDDHARTHANAGAR	2536	1849
BALLIA	143	204	KANNAUJ	0	1	SITAPUR	21	22
BALRAMPUR	240	96	KANPUR	11	3	SONBHADRA	118	31
BANDA	8	3	KANPUR DEHAT	29	22	SULTANPUR	60	27
BARABANKI	8	3	KAUSHAMBI	6	5	UNNAO	59	18
BAREILLY	113	20	KHERI	159	77	VARANASI	1	0
BASTI	426	225	KUSHINAGAR	223	95	Total	10694	6270
BIJNOR	52	26	LACKNOW	13	0			
BULANDSAHAR	8	9	LALITPUR	56	63			
CHANDAULI	291	61	MAHAMAYANAGAR	0	1			
CHITRAKOOT	23	3	MAHARAJGANJ	1494	977			
DEORIA	727	440	MAHOBA	2	44			
ETAH	1	5	MAINPURI	6	6			
ETAWAH	3	5	MATHURA	24	53			
FAIZABAD	4	10	MAU	81	64			
FARRUKHABAD	3	2	MEERUT	18	24			
FATEHPUR	45	31	MIRZAPUR	66	15			
FIROZABAD	1	0	MORADABAD	6	14			

(d) Madhya Pradesh

District	01 Apr-16 May				
	2022	2023			
			PANNA	157	69
ALIRAJPUR	0	0	RAISEN	2619	1665
ANUPPUR	33	1	RAJGARH	145	176
ASHOKNAGAR	635	229	RATLAM	192	291
BALAGHAT	28	1	REWA	150	55
BARWANI	6	7	SAGAR	746	569
BETUL	188	56	SATNA	882	212
BHIND	66	56	SEHORE	934	653
BHOPAL	953	487	SEONI	1525	802
BURHANPUR	12	3	SHAHDOL	104	8
CHHATARPUR	149	143	SHAJAPUR	385	543
CHHINDWARA	513	266	SHEOPUR	367	447
DAMOH	208	253	SHIVPURI	162	115
DATIA	376	284	SIDHI	25	2
DEWAS	562	567	SINGRAULI	112	3
DHAR	1008	877	TIKAMGARH	29	82
DINDORI	44	5	UJJAIN	1229	1782
EAST NIMAR	82	103	UMARIA	54	12
GUNA	736	391	VIDESHA	3721	1734
GWALIOR	577	395	WEST NIMAR	34	60
HARDA	381	271	Total	26759	18352
HOSHANGABAD	4063	2757			
INDORE	968	1009			
JABALPUR	881	476			
JHABUA	2	6			
KATNI	289	131			
MANDLA	177	43			
MANDSAUR	64	110			
MORENA	36	5			
NARSHIMAPURA	129	99			
NIMACH	21	41			

(e) Delhi

District	01 Apr-16 May	
	2022	2023
CENTRAL	0	0
EAST	0	0
NEW DELHI	0	0
NORTH	18	2
NORTH EAST	1	0
NORTH WEST DELHI	1	0
SHAHADRA	0	0
SOUTH	1	0
SOUTH EAST	0	0
SOUTH WEST DELHI	1	2
WEST DELHI	1	1
Total	23	5

State-wise and date-wise number of wheat residue burning events detected in 2022 and 2023
(Period: 01 April-16 May)

Date	Punjab		Haryana		Uttar Pradesh		Delhi		Madhya Pradesh	
	2022	2023	2022	2023	2022	2023	2022	2023	2022	2023
01-Apr	6	0	2	0	10	0	0	0	715	231
02-Apr	1	0	1	0	22	15	0	0	531	462
03-Apr	3	0	2	0	21	9	0	0	589	682
04-Apr	2	0	2	0	29	10	0	0	589	956
05-Apr	2	2	4	0	21	41	0	0	698	511
06-Apr	0	4	1	1	16	47	0	0	612	611
07-Apr	0	6	0	2	46	30	0	0	908	484
08-Apr	1	4	2	3	37	100	0	1	749	365
09-Apr	0	5	0	5	16	98	0	0	907	801
10-Apr	4	5	2	4	24	295	0	0	1217	592
11-Apr	2	1	2	1	78	439	0	0	1129	698
12-Apr	0	2	0	0	67	262	0	0	847	459
13-Apr	3	2	3	3	70	473	0	0	537	586
14-Apr	7	5	9	7	193	201	0	0	618	227
15-Apr	1	0	7	19	579	141	1	0	1079	536
16-Apr	13	1	14	10	609	473	0	0	1390	651
17-Apr	10	3	12	10	751	594	0	0	1441	665
18-Apr	12	1	17	12	611	370	2	0	972	985
19-Apr	29	6	23	3	231	456	1	1	748	850
20-Apr	56	1	14	8	395	368	2	0	856	830
21-Apr	4	3	0	8	202	174	0	0	379	404
22-Apr	77	9	17	9	398	192	0	0	839	379
23-Apr	35	3	22	2	519	170	1	0	524	626
24-Apr	360	19	96	22	2515	56	4	2	605	567
25-Apr	82	39	65	32	450	153	2	0	796	859

26-Apr	354	22	122	16	277	77	0	0	706	409
27-Apr	1064	28	436	69	436	158	5	0	955	195
28-Apr	965	12	453	9	249	67	0	0	849	122
29-Apr	802	20	345	1	213	43	2	0	340	24
30-Apr	662	52	357	6	166	4	1	0	547	38
01-May	848	3	56	0	126	32	0	0	437	8
02-May	1887	31	159	38	132	13	1	0	265	107
03-May	979	24	77	12	141	26	0	1	283	51
04-May	1247	343	72	94	147	25	0	0	188	151
05-May	796	892	65	368	64	45	0	0	159	186
06-May	202	1221	2	224	107	113	0	0	166	555
07-May	827	502	108	194	52	89	0	0	215	279
08-May	1065	604	110	133	130	66	0	0	275	171
09-May	357	331	27	34	103	34	0	0	199	71
10-May	437	1019	34	124	113	42	0	0	123	197
11-May	67	1554	6	186	101	63	0	0	99	299
12-May	289	752	29	63	17	56	0	0	94	174
13-May	253	1113	29	47	60	57	0	0	173	83
14-May	306	98	35	16	63	51	1	0	214	76
15-May	49	507	5	27	38	15	0	0	99	69
16-May	16	818	3	21	49	27	0	0	98	70
Total	14182	10067	2847	1844	10694	6270	23	5	26759	18352

Details of residue burning events in Punjab on 16-May-2023

S. No.	District	Tehsil / Block	Satellite	Latitude	Longitude	ACQ_TIME	Day / Night	Fire Power (W/m2)
1	AMRITSAR	AJNALA	S-NPP	31.81951	74.83947	12:46:35	D	4.50
2	AMRITSAR	AJNALA	S-NPP	31.82025	74.83927	12:46:35	D	2.00
3	AMRITSAR	AJNALA	S-NPP	31.83857	74.70853	14:26:52	D	8.80
4	AMRITSAR	AJNALA	S-NPP	31.86748	74.86799	12:46:35	D	1.40
5	AMRITSAR	AJNALA	S-NPP	31.88243	74.67320	12:46:35	D	2.70
6	AMRITSAR	AJNALA	S-NPP	31.88305	74.67267	12:46:35	D	3.00
7	AMRITSAR	AJNALA	S-NPP	31.93989	74.87896	12:46:35	D	1.80
8	AMRITSAR	AJNALA	S-NPP	31.94054	74.87889	12:46:35	D	4.00
9	AMRITSAR	AJNALA	S-NPP	31.94059	74.90537	12:46:35	D	1.30
10	AMRITSAR	AJNALA	S-NPP	31.94140	74.90521	12:46:35	D	1.40
11	AMRITSAR	AJNALA	S-NPP	31.94624	74.83240	12:46:35	D	8.20
12	AMRITSAR	AJNALA	S-NPP	31.95557	74.86939	12:46:35	D	5.10
13	AMRITSAR	AJNALA	S-NPP	31.95660	74.87348	12:46:35	D	5.10
14	AMRITSAR	AJNALA	S-NPP	31.97470	74.87624	12:46:35	D	2.40
15	AMRITSAR	AJNALA	S-NPP	31.98287	74.90887	12:46:35	D	3.60
16	AMRITSAR	AJNALA	S-NPP	31.98869	74.86259	12:46:35	D	4.20
17	AMRITSAR	ATTARI	AQUA	31.58400	74.63400	14:07:32	D	14.80
18	AMRITSAR	ATTARI	S-NPP	31.57534	74.65771	14:26:52	D	2.60
19	AMRITSAR	ATTARI	S-NPP	31.57622	74.67573	14:26:52	D	2.50
20	AMRITSAR	ATTARI	S-NPP	31.58322	74.68742	14:26:52	D	3.20
21	AMRITSAR	CHOGAWAN	S-NPP	31.68584	74.62811	14:26:52	D	1.90
22	AMRITSAR	CHOGAWAN	S-NPP	31.70395	74.65543	12:46:35	D	3.60
23	AMRITSAR	CHOGAWAN	S-NPP	31.71427	74.54861	14:26:52	D	13.90
24	AMRITSAR	CHOGAWAN	S-NPP	31.71881	74.54585	14:26:52	D	11.10
25	AMRITSAR	CHOGAWAN	S-NPP	31.71912	74.55181	14:26:52	D	17.20
26	AMRITSAR	CHOGAWAN	S-NPP	31.72064	74.54828	14:26:52	D	5.00
27	AMRITSAR	CHOGAWAN	S-NPP	31.76166	74.62643	12:46:35	D	4.00
28	AMRITSAR	CHOGAWAN	S-NPP	31.76225	74.61766	14:26:52	D	4.40
29	AMRITSAR	CHOGAWAN	S-NPP	31.76254	74.62366	14:26:52	D	7.30

30	AMRITSAR	CHOGAWAN	S-NPP	31.83717	74.70441	14:26:52	D	10.20
31	AMRITSAR	CHOGAWAN	S-NPP	31.83829	74.70244	14:26:52	D	7.40
32	AMRITSAR	CHOGAWAN	S-NPP	31.84548	74.61646	12:46:35	D	3.10
33	AMRITSAR	HARSHA CHHINA	S-NPP	31.77909	74.76740	12:46:35	D	2.00
34	AMRITSAR	HARSHA CHHINA	S-NPP	31.80273	74.92900	14:26:52	D	5.10
35	AMRITSAR	HARSHA CHHINA	S-NPP	31.81400	74.86375	12:46:35	D	0.90
36	AMRITSAR	JANDIALA GURU	S-NPP	31.51075	74.99663	12:46:35	D	3.10
37	AMRITSAR	JANDIALA GURU	S-NPP	31.52826	74.95057	12:46:35	D	3.90
38	AMRITSAR	JANDIALA GURU	S-NPP	31.53967	74.99586	12:46:35	D	2.00
39	AMRITSAR	JANDIALA GURU	S-NPP	31.61225	75.07764	12:46:35	D	2.50
40	AMRITSAR	JANDIALA GURU	S-NPP	31.62459	75.03391	12:46:35	D	4.50
41	AMRITSAR	MAJITHA	AQUA	31.80900	74.98800	14:07:32	D	12.60
42	AMRITSAR	MAJITHA	S-NPP	31.79722	74.98071	12:46:35	D	3.80
43	AMRITSAR	MAJITHA	S-NPP	31.80280	74.93369	14:26:52	D	9.80
44	AMRITSAR	MAJITHA	S-NPP	31.80302	74.93527	14:26:52	D	5.10
45	AMRITSAR	RAYYA	S-NPP	31.51647	75.20733	12:46:35	D	1.30
46	AMRITSAR	RAYYA	S-NPP	31.57953	75.31857	14:26:52	D	1.90
47	AMRITSAR	RAYYA	S-NPP	31.61774	75.26213	12:46:35	D	4.10
48	AMRITSAR	RAYYA	S-NPP	31.61971	75.27004	12:46:35	D	4.50
49	AMRITSAR	RAYYA	S-NPP	31.62499	75.26830	12:46:35	D	6.60
50	AMRITSAR	RAYYA	S-NPP	31.62929	75.26258	12:46:35	D	4.00
51	AMRITSAR	RAYYA	S-NPP	31.63377	75.30374	12:46:35	D	3.90
52	AMRITSAR	RAYYA	S-NPP	31.63904	75.30199	12:46:35	D	3.90
53	AMRITSAR	RAYYA	S-NPP	31.64358	75.22784	12:46:35	D	1.90
54	AMRITSAR	RAYYA	S-NPP	31.64985	75.23003	12:46:35	D	3.60
55	AMRITSAR	RAYYA	S-NPP	31.65945	75.22255	12:46:35	D	2.50
56	AMRITSAR	TARSIKKA	S-NPP	31.62726	75.06823	12:46:35	D	4.90
57	AMRITSAR	TARSIKKA	S-NPP	31.65301	75.17293	12:46:35	D	3.90
58	AMRITSAR	TARSIKKA	S-NPP	31.66474	75.22079	12:46:35	D	2.50
59	AMRITSAR	TARSIKKA	S-NPP	31.69486	75.12234	14:26:52	D	6.90
60	AMRITSAR	VERKA	S-NPP	31.70852	74.95272	12:46:35	D	2.70
61	BARNALA	MAHAL KALAN	AQUA	30.50500	75.58500	14:07:32	D	13.60
62	BARNALA	MAHAL KALAN	AQUA	30.54100	75.53900	14:07:32	D	14.20

63	BARNALA	MAHAL KALAN	AQUA	30.54300	75.55200	14:07:32	D	17.40
64	BARNALA	MAHAL KALAN	S-NPP	30.52500	75.49459	12:46:35	D	3.40
65	BARNALA	SEHNA	S-NPP	30.28361	75.38395	12:46:35	D	2.70
66	BARNALA	SEHNA	S-NPP	30.28858	75.38221	12:46:35	D	5.90
67	BARNALA	SEHNA	S-NPP	30.28902	75.38219	12:46:35	D	2.20
68	BARNALA	SEHNA	S-NPP	30.39150	75.46851	12:46:35	D	6.30
69	BATHINDA	BHAGTA BHAI KA	S-NPP	30.49292	75.03386	12:46:35	D	1.80
70	BATHINDA	BHAGTA BHAI KA	S-NPP	30.49841	75.03206	12:46:35	D	3.40
71	BATHINDA	BHAGTA BHAI KA	S-NPP	30.51702	75.15463	12:46:35	D	3.20
72	BATHINDA	GONIANA MANDI	S-NPP	30.30723	74.82993	12:46:35	D	3.50
73	BATHINDA	NATHANA	S-NPP	30.25516	75.03368	14:26:52	D	2.90
74	BATHINDA	NATHANA	S-NPP	30.25529	75.03674	14:26:52	D	3.80
75	BATHINDA	NATHANA	S-NPP	30.26518	75.10982	14:26:52	D	4.50
76	BATHINDA	NATHANA	S-NPP	30.26548	75.10670	14:26:52	D	3.60
77	BATHINDA	NATHANA	S-NPP	30.29703	75.09554	14:26:52	D	4.30
78	BATHINDA	NATHANA	S-NPP	30.29725	75.09257	14:26:52	D	3.10
79	BATHINDA	SANGAT	S-NPP	30.12214	74.72541	12:46:35	D	2.00
80	FARIDKOT	FARIDKOT	AQUA	30.71000	74.90300	14:07:32	D	12.60
81	FARIDKOT	FARIDKOT	S-NPP	30.66313	74.59362	14:26:52	D	5.80
82	FARIDKOT	FARIDKOT	S-NPP	30.68470	74.89485	12:46:35	D	2.90
83	FARIDKOT	FARIDKOT	S-NPP	30.69937	74.83103	14:26:52	D	2.30
84	FARIDKOT	FARIDKOT	S-NPP	30.82795	74.65708	14:26:52	D	3.20
85	FARIDKOT	JAITON	AQUA	30.55300	74.95300	14:07:32	D	11.90
86	FARIDKOT	JAITON	S-NPP	30.45412	74.85990	14:26:52	D	1.30
87	FARIDKOT	JAITON	S-NPP	30.45500	74.85963	14:26:52	D	3.20
88	FARIDKOT	JAITON	S-NPP	30.47081	74.77669	12:46:35	D	5.30
89	FARIDKOT	JAITON	S-NPP	30.47191	74.78113	12:46:35	D	9.10
90	FARIDKOT	JAITON	S-NPP	30.47272	74.77914	12:46:35	D	9.10
91	FARIDKOT	JAITON	S-NPP	30.49624	74.84780	12:46:35	D	2.10
92	FARIDKOT	JAITON	S-NPP	30.50031	74.89561	12:46:35	D	3.40
93	FARIDKOT	JAITON	S-NPP	30.50182	74.89332	12:46:35	D	2.50
94	FARIDKOT	JAITON	S-NPP	30.51184	74.99040	12:46:35	D	1.80
95	FARIDKOT	JAITON	S-NPP	30.51810	74.96449	14:26:52	D	5.30

96	FARIDKOT	JAITON	S-NPP	30.53716	74.91470	12:46:35	D	3.80
97	FARIDKOT	JAITON	S-NPP	30.53938	74.89983	12:46:35	D	2.70
98	FARIDKOT	JAITON	S-NPP	30.54813	74.93456	12:46:35	D	2.40
99	FARIDKOT	JAITON	S-NPP	30.54922	74.93890	12:46:35	D	3.20
100	FARIDKOT	JAITON	S-NPP	30.56016	74.95868	12:46:35	D	1.80
101	FARIDKOT	KOT KAPURA	AQUA	30.54000	74.93000	14:07:32	D	13.40
102	FARIDKOT	KOT KAPURA	S-NPP	30.48167	74.79058	12:46:35	D	2.60
103	FARIDKOT	KOT KAPURA	S-NPP	30.50053	74.84808	12:46:35	D	3.00
104	FARIDKOT	KOT KAPURA	S-NPP	30.50284	74.80273	12:46:35	D	3.20
105	FARIDKOT	KOT KAPURA	S-NPP	30.50839	74.80091	12:46:35	D	3.20
106	FARIDKOT	KOT KAPURA	S-NPP	30.51670	74.80805	14:26:52	D	3.20
107	FARIDKOT	KOT KAPURA	S-NPP	30.52371	74.81954	14:26:52	D	4.20
108	FARIDKOT	KOT KAPURA	S-NPP	30.52401	74.82550	14:26:52	D	4.20
109	FARIDKOT	KOT KAPURA	S-NPP	30.58897	74.90701	12:46:35	D	6.10
110	FARIDKOT	KOT KAPURA	S-NPP	30.59064	74.74478	12:46:35	D	2.10
111	FARIDKOT	KOT KAPURA	S-NPP	30.59760	74.94166	12:46:35	D	1.70
112	FARIDKOT	KOT KAPURA	S-NPP	30.60899	74.86736	12:46:35	D	6.90
113	FARIDKOT	KOT KAPURA	S-NPP	30.61007	74.87171	12:46:35	D	6.60
114	FARIDKOT	KOT KAPURA	S-NPP	30.61089	74.92322	12:46:35	D	2.10
115	FARIDKOT	KOT KAPURA	S-NPP	30.61205	74.86722	12:46:35	D	10.30
116	FARIDKOT	KOT KAPURA	S-NPP	30.61424	74.92285	12:46:35	D	3.90
117	FARIDKOT	KOT KAPURA	S-NPP	30.63308	74.91934	14:26:52	D	3.50
118	FARIDKOT	KOT KAPURA	S-NPP	30.64850	74.84573	12:46:35	D	3.10
119	FATEHGARH SAHIB	AMLOH	S-NPP	30.67574	76.33041	12:46:35	D	8.30
120	FATEHGARH SAHIB	BASSI PATHANAN	S-NPP	30.68146	76.54301	12:46:35	D	4.40
121	FATEHGARH SAHIB	BASSI PATHANAN	S-NPP	30.68252	76.54099	12:46:35	D	5.60
122	FATEHGARH SAHIB	BASSI PATHANAN	S-NPP	30.72654	76.44997	14:26:52	D	8.00
123	FATEHGARH SAHIB	BASSI PATHANAN	S-NPP	30.72860	76.45229	14:26:52	D	8.20
124	FATEHGARH SAHIB	BASSI PATHANAN	S-NPP	30.75564	76.40768	12:46:35	D	3.10
125	FATEHGARH SAHIB	KHAMANON	S-NPP	30.71397	76.32995	12:46:35	D	3.60
126	FATEHGARH SAHIB	KHAMANON	S-NPP	30.79198	76.37730	12:46:35	D	5.40
127	FATEHGARH SAHIB	KHAMANON	S-NPP	30.84090	76.39989	12:46:35	D	7.70
128	FATEHGARH SAHIB	KHERA	S-NPP	30.58573	76.52774	12:46:35	D	2.80

129	FATEHGARH SAHIB	KHERA	S-NPP	30.59252	76.48786	12:46:35	D	4.70
130	FATEHGARH SAHIB	KHERA	S-NPP	30.61111	76.47449	12:46:35	D	5.80
131	FATEHGARH SAHIB	KHERA	S-NPP	30.61204	76.48035	14:26:52	D	5.10
132	FATEHGARH SAHIB	KHERA	S-NPP	30.61797	76.43436	12:46:35	D	7.60
133	FATEHGARH SAHIB	SIRHIND	S-NPP	30.49365	76.44640	14:26:52	D	6.00
134	FATEHGARH SAHIB	SIRHIND	S-NPP	30.52239	76.33475	12:46:35	D	1.70
135	FATEHGARH SAHIB	SIRHIND	S-NPP	30.55764	76.46204	12:46:35	D	5.00
136	FATEHGARH SAHIB	SIRHIND	S-NPP	30.56532	76.32796	12:46:35	D	4.30
137	FATEHGARH SAHIB	SIRHIND	S-NPP	30.65368	76.37724	12:46:35	D	2.10
138	FATEHGARH SAHIB	SIRHIND	S-NPP	30.65452	76.38083	12:46:35	D	2.10
139	FATEHGARH SAHIB	SIRHIND	S-NPP	30.65458	76.37930	12:46:35	D	4.60
140	FAZILKA	ABOHAR	S-NPP	30.19816	74.25509	12:46:35	D	1.90
141	FAZILKA	ARNIWALA SHEIKH SUBANPUR	S-NPP	30.33016	74.10593	12:46:35	D	2.70
142	FAZILKA	ARNIWALA SHEIKH SUBANPUR	S-NPP	30.36360	74.29959	12:46:35	D	4.10
143	FAZILKA	ARNIWALA SHEIKH SUBANPUR	S-NPP	30.36723	74.29724	12:46:35	D	2.80
144	FAZILKA	ARNIWALA SHEIKH SUBANPUR	S-NPP	30.38072	74.20461	12:46:35	D	4.20
145	FAZILKA	ARNIWALA SHEIKH SUBANPUR	S-NPP	30.39257	74.15341	12:46:35	D	7.60
146	FAZILKA	ARNIWALA SHEIKH SUBANPUR	S-NPP	30.39381	74.15824	12:46:35	D	12.10
147	FAZILKA	ARNIWALA SHEIKH SUBANPUR	S-NPP	30.41327	74.14483	14:26:52	D	3.70
148	FAZILKA	ARNIWALA SHEIKH SUBANPUR	S-NPP	30.41435	74.14572	14:26:52	D	1.80
149	FAZILKA	FAZILKA	S-NPP	30.36859	74.10877	12:46:35	D	9.40
150	FAZILKA	FAZILKA	S-NPP	30.48024	74.01443	12:46:35	D	3.20
151	FAZILKA	JALALABAD	S-NPP	30.51787	74.18591	12:46:35	D	2.20
152	FAZILKA	JALALABAD	S-NPP	30.52238	74.17918	12:46:35	D	2.20
153	FAZILKA	JALALABAD	S-NPP	30.52360	74.18396	12:46:35	D	2.20
154	FAZILKA	JALALABAD	S-NPP	30.55134	74.08189	12:46:35	D	2.50
155	FAZILKA	JALALABAD	S-NPP	30.60197	74.20551	12:46:35	D	1.70
156	FAZILKA	KHUIAN SARWAR	S-NPP	30.27816	74.02750	12:46:35	D	2.90
157	FIROZPUR	FIROZPUR	AQUA	30.89000	74.54900	14:07:32	D	19.90
158	FIROZPUR	FIROZPUR	AQUA	30.90100	74.55900	14:07:32	D	22.80
159	FIROZPUR	FIROZPUR	AQUA	30.90500	74.56500	14:07:32	D	14.70
160	FIROZPUR	FIROZPUR	S-NPP	30.86465	74.58683	14:26:52	D	3.10
161	FIROZPUR	FIROZPUR	S-NPP	30.90150	74.56120	14:26:52	D	3.10

162	FIROZPUR	FIROZPUR	S-NPP	30.90784	74.56080	14:26:52	D	3.10
163	FIROZPUR	FIROZPUR	S-NPP	30.93857	74.54147	14:26:52	D	3.30
164	FIROZPUR	FIROZPUR	S-NPP	30.93981	74.51974	12:46:35	D	3.90
165	FIROZPUR	FIROZPUR	S-NPP	30.96112	74.58053	12:46:35	D	2.60
166	FIROZPUR	FIROZPUR	S-NPP	30.99765	74.67854	12:46:35	D	2.90
167	FIROZPUR	FIROZPUR	S-NPP	31.00093	74.68044	12:46:35	D	2.10
168	FIROZPUR	FIROZPUR	S-NPP	31.01313	74.70808	14:26:52	D	4.40
169	FIROZPUR	FIROZPUR	S-NPP	31.02976	74.76995	12:46:35	D	3.10
170	FIROZPUR	FIROZPUR	S-NPP	31.03144	74.76651	12:46:35	D	4.40
171	FIROZPUR	FIROZPUR	S-NPP	31.03482	74.62968	14:26:52	D	6.30
172	FIROZPUR	FIROZPUR	S-NPP	31.03513	74.62608	12:46:35	D	6.30
173	FIROZPUR	FIROZPUR	S-NPP	31.06383	74.76325	12:46:35	D	2.60
174	FIROZPUR	FIROZPUR	S-NPP	31.06813	74.80389	12:46:35	D	2.40
175	FIROZPUR	FIROZPUR	S-NPP	31.10758	74.79535	12:46:35	D	2.20
176	FIROZPUR	GHALL KHURD	AQUA	30.94100	74.78400	14:07:32	D	11.70
177	FIROZPUR	GHALL KHURD	AQUA	30.98300	74.72700	14:07:32	D	12.50
178	FIROZPUR	GHALL KHURD	AQUA	31.01100	74.71000	14:07:32	D	15.80
179	FIROZPUR	GHALL KHURD	S-NPP	30.80538	74.81758	12:46:35	D	1.90
180	FIROZPUR	GHALL KHURD	S-NPP	30.80646	74.82194	12:46:35	D	1.90
181	FIROZPUR	GHALL KHURD	S-NPP	30.80875	74.81715	12:46:35	D	4.90
182	FIROZPUR	GHALL KHURD	S-NPP	30.82261	74.80611	14:26:52	D	2.90
183	FIROZPUR	GHALL KHURD	S-NPP	30.87353	74.88465	12:46:35	D	3.60
184	FIROZPUR	GHALL KHURD	S-NPP	30.93023	74.72013	12:46:35	D	3.50
185	FIROZPUR	GURUHAR SAHAI	S-NPP	30.73891	74.46784	14:26:52	D	13.30
186	FIROZPUR	GURUHAR SAHAI	S-NPP	30.77811	74.43600	12:46:35	D	1.80
187	FIROZPUR	MAKHU	AQUA	31.05600	74.80900	14:07:32	D	9.70
188	FIROZPUR	MAKHU	S-NPP	31.02020	74.81710	12:46:35	D	2.70
189	FIROZPUR	MAKHU	S-NPP	31.02318	74.81422	12:46:35	D	3.50
190	FIROZPUR	MAKHU	S-NPP	31.05161	74.85587	12:46:35	D	1.00
191	FIROZPUR	MAKHU	S-NPP	31.06090	75.02876	12:46:35	D	2.70
192	FIROZPUR	MAKHU	S-NPP	31.06265	74.80573	12:46:35	D	6.40
193	FIROZPUR	MAKHU	S-NPP	31.06632	75.02695	12:46:35	D	2.70
194	FIROZPUR	MAKHU	S-NPP	31.06671	74.91544	12:46:35	D	3.40

195	FIROZPUR	MAKHU	S-NPP	31.06853	74.91672	12:46:35	D	3.10
196	FIROZPUR	MAKHU	S-NPP	31.06908	74.85465	12:46:35	D	4.00
197	FIROZPUR	MAKHU	S-NPP	31.07858	74.86111	14:26:52	D	2.40
198	FIROZPUR	MAKHU	S-NPP	31.07903	74.86369	14:26:52	D	2.70
199	FIROZPUR	MAKHU	S-NPP	31.09105	74.82415	12:46:35	D	3.80
200	FIROZPUR	MAKHU	S-NPP	31.10804	74.91544	12:46:35	D	5.70
201	FIROZPUR	MAKHU	S-NPP	31.11269	74.89594	14:26:52	D	2.50
202	FIROZPUR	MAKHU	S-NPP	31.12137	74.93847	14:26:52	D	2.30
203	FIROZPUR	MAKHU	S-NPP	31.12137	74.94099	14:26:52	D	2.80
204	FIROZPUR	MAKHU	S-NPP	31.12348	75.02402	12:46:35	D	3.20
205	FIROZPUR	MAMDOT	AQUA	30.82400	74.32900	14:07:32	D	45.40
206	FIROZPUR	MAMDOT	AQUA	30.83700	74.36300	14:07:32	D	10.40
207	FIROZPUR	MAMDOT	AQUA	30.91700	74.42900	14:07:32	D	18.30
208	FIROZPUR	MAMDOT	S-NPP	30.78471	74.41389	12:46:35	D	1.30
209	FIROZPUR	MAMDOT	S-NPP	30.78639	74.49252	12:46:35	D	2.00
210	FIROZPUR	MAMDOT	S-NPP	30.79730	74.43945	12:46:35	D	1.30
211	FIROZPUR	MAMDOT	S-NPP	30.81145	74.34145	14:26:52	D	5.30
212	FIROZPUR	MAMDOT	S-NPP	30.81565	74.42052	14:26:52	D	5.70
213	FIROZPUR	MAMDOT	S-NPP	30.83185	74.48814	14:26:52	D	3.90
214	FIROZPUR	MAMDOT	S-NPP	30.83798	74.36801	14:26:52	D	7.30
215	FIROZPUR	MAMDOT	S-NPP	30.84127	74.36413	14:26:52	D	9.90
216	FIROZPUR	MAMDOT	S-NPP	30.84154	74.36977	14:26:52	D	11.70
217	FIROZPUR	MAMDOT	S-NPP	30.84424	74.36763	14:26:52	D	7.30
218	FIROZPUR	MAMDOT	S-NPP	30.86344	74.48186	12:46:35	D	3.40
219	FIROZPUR	MAMDOT	S-NPP	30.86904	74.47997	12:46:35	D	3.40
220	FIROZPUR	MAMDOT	S-NPP	30.87118	74.39997	14:26:52	D	2.80
221	FIROZPUR	MAMDOT	S-NPP	30.87793	74.46715	12:46:35	D	4.20
222	FIROZPUR	MAMDOT	S-NPP	30.91996	74.42731	14:26:52	D	13.00
223	FIROZPUR	MAMDOT	S-NPP	30.92025	74.43301	14:26:52	D	11.90
224	FIROZPUR	MAMDOT	S-NPP	30.93840	74.44176	12:46:35	D	2.70
225	FIROZPUR	MAMDOT	S-NPP	30.94032	74.44450	12:46:35	D	3.20
226	FIROZPUR	ZIRA	AQUA	31.02100	74.87300	14:07:32	D	12.90
227	FIROZPUR	ZIRA	S-NPP	30.94441	75.04649	14:26:52	D	2.50

228	FIROZPUR	ZIRA	S-NPP	30.96783	75.03239	12:46:35	D	3.30
229	FIROZPUR	ZIRA	S-NPP	30.96889	75.03658	12:46:35	D	3.30
230	FIROZPUR	ZIRA	S-NPP	30.96931	75.03213	12:46:35	D	3.20
231	FIROZPUR	ZIRA	S-NPP	30.97034	75.03633	12:46:35	D	3.20
232	FIROZPUR	ZIRA	S-NPP	30.97630	75.06582	12:46:35	D	4.80
233	FIROZPUR	ZIRA	S-NPP	30.97654	75.06147	12:46:35	D	2.80
234	FIROZPUR	ZIRA	S-NPP	30.97757	75.06565	12:46:35	D	7.00
235	FIROZPUR	ZIRA	S-NPP	30.98172	75.06404	12:46:35	D	4.80
236	FIROZPUR	ZIRA	S-NPP	30.98298	75.06385	12:46:35	D	2.60
237	FIROZPUR	ZIRA	S-NPP	31.00566	75.04257	12:46:35	D	5.50
238	FIROZPUR	ZIRA	S-NPP	31.00671	75.04675	12:46:35	D	14.10
239	FIROZPUR	ZIRA	S-NPP	31.04654	74.94704	12:46:35	D	1.80
240	GURDASPUR	BATALA	S-NPP	31.78697	75.24836	12:46:35	D	3.30
241	GURDASPUR	BATALA	S-NPP	31.80421	75.27238	12:46:35	D	4.10
242	GURDASPUR	BATALA	S-NPP	31.80516	75.27631	12:46:35	D	9.80
243	GURDASPUR	BATALA	S-NPP	31.80662	75.27145	12:46:35	D	8.70
244	GURDASPUR	BATALA	S-NPP	31.80760	75.27536	12:46:35	D	8.30
245	GURDASPUR	BATALA	S-NPP	31.80947	75.27062	12:46:35	D	4.10
246	GURDASPUR	BATALA	S-NPP	31.85725	75.24609	12:46:35	D	3.60
247	GURDASPUR	BATALA	S-NPP	31.87061	75.14738	14:26:52	D	3.70
248	GURDASPUR	DERA BABA NANAK	AQUA	32.00600	75.02400	14:07:32	D	16.50
249	GURDASPUR	DERA BABA NANAK	S-NPP	32.00483	75.01972	12:46:35	D	3.90
250	GURDASPUR	DERA BABA NANAK	S-NPP	32.00513	74.99787	12:46:35	D	8.60
251	GURDASPUR	DERA BABA NANAK	S-NPP	32.00613	75.00189	12:46:35	D	10.10
252	GURDASPUR	DERA BABA NANAK	S-NPP	32.02077	75.08358	12:46:35	D	3.10
253	GURDASPUR	DERA BABA NANAK	S-NPP	32.03167	74.98891	12:46:35	D	3.10
254	GURDASPUR	DERA BABA NANAK	S-NPP	32.03894	75.06455	12:46:35	D	3.80
255	GURDASPUR	DERA BABA NANAK	S-NPP	32.04423	75.06276	12:46:35	D	3.80
256	GURDASPUR	DHARIWAL	S-NPP	31.87407	75.29126	12:46:35	D	2.10
257	GURDASPUR	DHARIWAL	S-NPP	31.88122	75.29730	12:46:35	D	2.50
258	GURDASPUR	DHARIWAL	S-NPP	31.89455	75.25906	12:46:35	D	6.30
259	GURDASPUR	DHARIWAL	S-NPP	31.92526	75.34214	14:26:52	D	3.00
260	GURDASPUR	DHARIWAL	S-NPP	31.95332	75.36123	12:46:35	D	4.40

261	GURDASPUR	DHARIWAL	S-NPP	31.95576	75.35981	12:46:35	D	5.80
262	GURDASPUR	DHARIWAL	S-NPP	32.00127	75.31539	12:46:35	D	7.30
263	GURDASPUR	DINA NAGAR	S-NPP	32.11114	75.51686	12:46:35	D	11.30
264	GURDASPUR	DINA NAGAR	S-NPP	32.13029	75.49019	01:36:35	N	0.30
265	GURDASPUR	DORANGALA	S-NPP	32.11058	75.36111	01:36:35	N	0.50
266	GURDASPUR	FATEHGARH CHURIAN	S-NPP	31.85090	75.01090	12:46:35	D	3.10
267	GURDASPUR	FATEHGARH CHURIAN	S-NPP	31.85118	75.01057	12:46:35	D	3.00
268	GURDASPUR	FATEHGARH CHURIAN	S-NPP	31.85189	75.01495	12:46:35	D	3.10
269	GURDASPUR	FATEHGARH CHURIAN	S-NPP	31.85220	75.01460	12:46:35	D	3.00
270	GURDASPUR	FATEHGARH CHURIAN	S-NPP	31.87147	74.99939	12:46:35	D	2.30
271	GURDASPUR	FATEHGARH CHURIAN	S-NPP	31.88010	74.98773	12:46:35	D	3.70
272	GURDASPUR	FATEHGARH CHURIAN	S-NPP	31.88542	74.98594	12:46:35	D	11.70
273	GURDASPUR	GURDASPUR	S-NPP	31.99747	75.34591	12:46:35	D	8.00
274	GURDASPUR	GURDASPUR	S-NPP	32.08762	75.38701	14:26:52	D	4.40
275	GURDASPUR	KAHNUWAN	AQUA	31.90000	75.51100	14:07:32	D	17.30
276	GURDASPUR	KAHNUWAN	S-NPP	31.84301	75.38566	12:46:35	D	7.60
277	GURDASPUR	KAHNUWAN	S-NPP	31.84613	75.38440	12:46:35	D	3.70
278	GURDASPUR	KAHNUWAN	S-NPP	31.86437	75.31851	14:26:52	D	2.90
279	GURDASPUR	KAHNUWAN	S-NPP	31.86606	75.37363	12:46:35	D	5.60
280	GURDASPUR	KAHNUWAN	S-NPP	31.86686	75.31979	14:26:52	D	3.00
281	GURDASPUR	KAHNUWAN	S-NPP	31.89307	75.41457	12:46:35	D	5.00
282	GURDASPUR	KAHNUWAN	S-NPP	31.91096	75.44164	12:46:35	D	2.80
283	GURDASPUR	KAHNUWAN	S-NPP	31.91226	75.51199	14:26:52	D	8.50
284	GURDASPUR	KAHNUWAN	S-NPP	31.91254	75.51881	14:26:52	D	12.00
285	GURDASPUR	KAHNUWAN	S-NPP	31.91315	75.47358	12:46:35	D	17.60
286	GURDASPUR	KALANAUR	AQUA	31.95500	75.20300	14:07:32	D	13.90
287	GURDASPUR	KALANAUR	AQUA	31.96500	75.20100	14:07:32	D	19.00
288	GURDASPUR	KALANAUR	S-NPP	31.95826	75.18870	14:26:52	D	7.90
289	GURDASPUR	KALANAUR	S-NPP	31.96171	75.16900	14:26:52	D	5.60
290	GURDASPUR	KALANAUR	S-NPP	31.96251	75.18860	14:26:52	D	7.90
291	GURDASPUR	KALANAUR	S-NPP	32.02104	75.16615	14:26:52	D	8.50
292	GURDASPUR	KALANAUR	S-NPP	32.04743	75.12186	12:46:35	D	5.80
293	GURDASPUR	KALANAUR	S-NPP	32.05172	75.11613	12:46:35	D	5.00

294	GURDASPUR	KALANAUR	S-NPP	32.05270	75.12008	12:46:35	D	5.00
295	GURDASPUR	KALANAUR	S-NPP	32.05368	75.12404	12:46:35	D	10.80
296	GURDASPUR	KALANAUR	S-NPP	32.05563	75.13193	12:46:35	D	5.30
297	GURDASPUR	KALANAUR	S-NPP	32.06947	75.11871	12:46:35	D	4.80
298	GURDASPUR	KALANAUR	S-NPP	32.07384	75.20761	14:26:52	D	6.90
299	GURDASPUR	KALANAUR	S-NPP	32.07411	75.21419	14:26:52	D	8.30
300	GURDASPUR	QADIAN	S-NPP	31.73985	75.38888	14:26:52	D	2.00
301	GURDASPUR	QADIAN	S-NPP	31.76838	75.35114	14:26:52	D	5.30
302	GURDASPUR	QADIAN	S-NPP	31.77892	75.37772	12:46:35	D	3.40
303	GURDASPUR	QADIAN	S-NPP	31.78549	75.44409	14:26:52	D	3.90
304	GURDASPUR	QADIAN	S-NPP	31.79746	75.40988	14:26:52	D	3.60
305	GURDASPUR	QADIAN	S-NPP	31.80627	75.30276	14:26:52	D	8.20
306	GURDASPUR	SRI HARGOBINDPUR	S-NPP	31.64509	75.35374	14:26:52	D	5.00
307	GURDASPUR	SRI HARGOBINDPUR	S-NPP	31.64761	75.35493	14:26:52	D	5.20
308	GURDASPUR	SRI HARGOBINDPUR	S-NPP	31.68170	75.35979	12:46:35	D	2.80
309	GURDASPUR	SRI HARGOBINDPUR	S-NPP	31.70258	75.29783	14:26:52	D	2.30
310	GURDASPUR	SRI HARGOBINDPUR	S-NPP	31.71539	75.42827	12:46:35	D	3.50
311	GURDASPUR	SRI HARGOBINDPUR	S-NPP	31.71646	75.38613	12:46:35	D	2.20
312	GURDASPUR	SRI HARGOBINDPUR	S-NPP	31.72380	75.46292	12:46:35	D	7.80
313	HOSHIARPUR	DASUYA	S-NPP	31.83200	75.59462	12:46:35	D	2.50
314	HOSHIARPUR	GARH SHANKAR	S-NPP	31.17709	76.12402	14:26:52	D	15.20
315	HOSHIARPUR	GARH SHANKAR	S-NPP	31.17730	76.11974	14:26:52	D	7.50
316	HOSHIARPUR	GARH SHANKAR	S-NPP	31.17761	76.12700	14:26:52	D	9.70
317	HOSHIARPUR	GARH SHANKAR	S-NPP	31.30251	76.04620	12:46:35	D	3.40
318	HOSHIARPUR	GARH SHANKAR	S-NPP	31.30328	76.02635	12:46:35	D	3.30
319	HOSHIARPUR	GARH SHANKAR	S-NPP	31.30415	76.02999	12:46:35	D	3.30
320	HOSHIARPUR	GARH SHANKAR	S-NPP	31.31811	76.11165	12:46:35	D	3.30
321	HOSHIARPUR	HOSHIARPUR-2	S-NPP	31.38730	75.84602	12:46:35	D	1.60
322	HOSHIARPUR	HOSHIARPUR-2	S-NPP	31.48636	75.94032	12:46:35	D	2.80
323	HOSHIARPUR	MAHILPUR	S-NPP	31.32842	75.90094	12:46:35	D	6.40
324	HOSHIARPUR	MUKERIAN	S-NPP	31.92506	75.63625	12:46:35	D	3.30
325	HOSHIARPUR	TALWARA	S-NPP	31.94982	75.77332	14:26:52	D	4.30
326	HOSHIARPUR	TALWARA	S-NPP	31.95079	75.77406	14:26:52	D	6.80

327	HOSHIARPUR	TANDA	AQUA	31.65100	75.55500	14:07:32	D	13.50
328	HOSHIARPUR	TANDA	S-NPP	31.62615	75.65326	01:36:35	N	0.50
329	HOSHIARPUR	TANDA	S-NPP	31.66442	75.51936	12:46:35	D	7.50
330	HOSHIARPUR	TANDA	S-NPP	31.66950	75.54252	14:26:52	D	1.10
331	HOSHIARPUR	TANDA	S-NPP	31.67257	75.54114	14:26:52	D	5.10
332	HOSHIARPUR	TANDA	S-NPP	31.67432	75.53671	12:46:35	D	5.90
333	HOSHIARPUR	TANDA	S-NPP	31.67525	75.54050	12:46:35	D	5.90
334	HOSHIARPUR	TANDA	S-NPP	31.67952	75.53500	12:46:35	D	5.70
335	HOSHIARPUR	TANDA	S-NPP	31.68139	75.54259	12:46:35	D	5.10
336	HOSHIARPUR	TANDA	S-NPP	31.68232	75.54639	12:46:35	D	5.10
337	HOSHIARPUR	TANDA	S-NPP	31.69512	75.52985	12:46:35	D	3.20
338	HOSHIARPUR	TANDA	S-NPP	31.72435	75.65540	14:26:52	D	5.70
339	HOSHIARPUR	TANDA	S-NPP	31.72851	75.55167	12:46:35	D	4.50
340	JALANDHAR	ADAMPUR	S-NPP	31.39880	75.71640	12:46:35	D	4.70
341	JALANDHAR	ADAMPUR	S-NPP	31.39972	75.72017	12:46:35	D	4.70
342	JALANDHAR	ADAMPUR	S-NPP	31.40247	75.71999	14:26:52	D	12.50
343	JALANDHAR	ADAMPUR	S-NPP	31.40311	75.77972	12:46:35	D	4.20
344	JALANDHAR	ADAMPUR	S-NPP	31.40706	75.75019	12:46:35	D	6.60
345	JALANDHAR	ADAMPUR	S-NPP	31.40797	75.75394	12:46:35	D	9.90
346	JALANDHAR	ADAMPUR	S-NPP	31.41192	75.79299	12:46:35	D	3.60
347	JALANDHAR	BHOGPUR	S-NPP	31.49302	75.55806	12:46:35	D	1.70
348	JALANDHAR	BHOGPUR	S-NPP	31.54671	75.59389	12:46:35	D	2.10
349	JALANDHAR	BHOGPUR	S-NPP	31.54929	75.59239	12:46:35	D	4.50
350	JALANDHAR	BHOGPUR	S-NPP	31.55709	75.58868	14:26:52	D	3.40
351	JALANDHAR	JALANDHAR EAST	S-NPP	31.24615	75.67117	12:46:35	D	2.20
352	JALANDHAR	JALANDHAR EAST	S-NPP	31.24651	75.65556	14:26:52	D	5.00
353	JALANDHAR	JALANDHAR EAST	S-NPP	31.24667	75.63552	12:46:35	D	3.70
354	JALANDHAR	JALANDHAR EAST	S-NPP	31.24744	75.67606	14:26:52	D	3.40
355	JALANDHAR	JALANDHAR EAST	S-NPP	31.24925	75.65416	14:26:52	D	9.40
356	JALANDHAR	JALANDHAR EAST	S-NPP	31.24991	75.67153	12:46:35	D	3.20
357	JALANDHAR	JALANDHAR EAST	S-NPP	31.25324	75.65522	14:26:52	D	3.40
358	JALANDHAR	JALANDHAR EAST	S-NPP	31.35477	75.75253	14:26:52	D	2.30
359	JALANDHAR	JALANDHAR WEST	S-NPP	31.46083	75.51884	12:46:35	D	7.70

360	JALANDHAR	JALANDHAR WEST	S-NPP	31.51142	75.51885	14:26:52	D	11.80
361	JALANDHAR	LOHIAN	AQUA	31.09600	75.15200	14:07:32	D	17.00
362	JALANDHAR	LOHIAN	S-NPP	31.11614	75.15830	12:46:35	D	4.80
363	JALANDHAR	LOHIAN	S-NPP	31.11682	75.16035	12:46:35	D	6.10
364	JALANDHAR	LOHIAN	S-NPP	31.13608	75.12162	14:26:52	D	3.30
365	JALANDHAR	LOHIAN	S-NPP	31.14244	75.24225	12:46:35	D	3.90
366	JALANDHAR	LOHIAN	S-NPP	31.14857	75.10829	14:26:52	D	4.80
367	JALANDHAR	LOHIAN	S-NPP	31.15087	75.15894	14:26:52	D	2.90
368	JALANDHAR	MEHATPUR	AQUA	31.05700	75.43500	14:07:32	D	15.60
369	JALANDHAR	MEHATPUR	S-NPP	30.98013	75.52035	12:46:35	D	2.40
370	JALANDHAR	MEHATPUR	S-NPP	30.98989	75.55959	12:46:35	D	2.80
371	JALANDHAR	MEHATPUR	S-NPP	30.99274	75.55877	12:46:35	D	2.20
372	JALANDHAR	MEHATPUR	S-NPP	31.01511	75.45358	12:46:35	D	3.90
373	JALANDHAR	MEHATPUR	S-NPP	31.02225	75.41264	12:46:35	D	5.70
374	JALANDHAR	NAKODAR	S-NPP	31.08108	75.51308	12:46:35	D	3.30
375	JALANDHAR	NAKODAR	S-NPP	31.12527	75.52322	12:46:35	D	4.10
376	JALANDHAR	NAKODAR	S-NPP	31.13720	75.45574	12:46:35	D	3.20
377	JALANDHAR	NAKODAR	S-NPP	31.14826	75.52410	12:46:35	D	2.60
378	JALANDHAR	NAKODAR	S-NPP	31.19458	75.55099	12:46:35	D	6.70
379	JALANDHAR	NUR MAHAL	AQUA	31.02800	75.61000	14:07:32	D	14.50
380	JALANDHAR	NUR MAHAL	S-NPP	31.02759	75.72696	12:46:35	D	4.60
381	JALANDHAR	NUR MAHAL	S-NPP	31.03211	75.63828	12:46:35	D	2.20
382	JALANDHAR	NUR MAHAL	S-NPP	31.05121	75.62376	12:46:35	D	2.50
383	JALANDHAR	NUR MAHAL	S-NPP	31.06276	75.57812	12:46:35	D	2.00
384	JALANDHAR	NUR MAHAL	S-NPP	31.09346	75.59785	14:26:52	D	2.70
385	JALANDHAR	NUR MAHAL	S-NPP	31.10344	75.61461	14:26:52	D	5.00
386	JALANDHAR	NUR MAHAL	S-NPP	31.10777	75.61752	14:26:52	D	3.60
387	JALANDHAR	NUR MAHAL	S-NPP	31.11428	75.54784	12:46:35	D	1.70
388	JALANDHAR	NUR MAHAL	S-NPP	31.12133	75.60922	12:46:35	D	1.70
389	JALANDHAR	NUR MAHAL	S-NPP	31.12341	75.60769	12:46:35	D	5.00
390	JALANDHAR	NUR MAHAL	S-NPP	31.12810	75.59029	12:46:35	D	2.60
391	JALANDHAR	NUR MAHAL	S-NPP	31.13009	75.58881	12:46:35	D	3.00
392	JALANDHAR	PHILLAUR	AQUA	31.04200	75.75800	14:07:32	D	34.90

393	JALANDHAR	PHILLAUR	AQUA	31.04500	75.74800	14:07:32	D	86.10
394	JALANDHAR	PHILLAUR	AQUA	31.07500	75.86700	14:07:32	D	18.00
395	JALANDHAR	PHILLAUR	AQUA	31.14900	75.87000	14:07:32	D	17.50
396	JALANDHAR	PHILLAUR	S-NPP	31.03958	75.87019	12:46:35	D	2.50
397	JALANDHAR	PHILLAUR	S-NPP	31.04335	75.74860	14:26:52	D	7.20
398	JALANDHAR	PHILLAUR	S-NPP	31.04366	75.75539	14:26:52	D	7.70
399	JALANDHAR	PHILLAUR	S-NPP	31.04589	75.75030	14:26:52	D	13.80
400	JALANDHAR	PHILLAUR	S-NPP	31.05010	75.74824	14:26:52	D	4.30
401	JALANDHAR	PHILLAUR	S-NPP	31.05312	75.83341	12:46:35	D	1.80
402	JALANDHAR	PHILLAUR	S-NPP	31.06907	75.81161	12:46:35	D	3.80
403	JALANDHAR	PHILLAUR	S-NPP	31.09504	75.87206	12:46:35	D	15.60
404	JALANDHAR	PHILLAUR	S-NPP	31.09953	75.90112	14:26:52	D	2.90
405	JALANDHAR	PHILLAUR	S-NPP	31.11975	75.83578	12:46:35	D	6.90
406	JALANDHAR	RURKA KALAN	AQUA	31.16100	75.71800	14:07:32	D	12.20
407	JALANDHAR	RURKA KALAN	S-NPP	31.07208	75.77806	12:46:35	D	9.20
408	JALANDHAR	RURKA KALAN	S-NPP	31.09374	75.70539	12:46:35	D	5.70
409	JALANDHAR	RURKA KALAN	S-NPP	31.09897	75.70369	12:46:35	D	5.70
410	JALANDHAR	RURKA KALAN	S-NPP	31.12109	75.72533	12:46:35	D	4.00
411	JALANDHAR	RURKA KALAN	S-NPP	31.15052	75.64877	12:46:35	D	3.30
412	JALANDHAR	RURKA KALAN	S-NPP	31.16902	75.65514	12:46:35	D	3.80
413	JALANDHAR	SHAHKOT	S-NPP	31.03276	75.36170	12:46:35	D	1.50
414	JALANDHAR	SHAHKOT	S-NPP	31.08627	75.29577	12:46:35	D	2.60
415	KAPURTHALA	DHILWAN	AQUA	31.41000	75.23200	14:07:32	D	14.60
416	KAPURTHALA	DHILWAN	AQUA	31.51600	75.44100	14:07:32	D	24.10
417	KAPURTHALA	DHILWAN	S-NPP	31.38637	75.19321	14:26:52	D	4.90
418	KAPURTHALA	DHILWAN	S-NPP	31.39684	75.26000	12:46:35	D	4.80
419	KAPURTHALA	DHILWAN	S-NPP	31.41685	75.20138	12:46:35	D	4.40
420	KAPURTHALA	DHILWAN	S-NPP	31.41784	75.20541	12:46:35	D	8.60
421	KAPURTHALA	DHILWAN	S-NPP	31.41809	75.25299	12:46:35	D	1.90
422	KAPURTHALA	DHILWAN	S-NPP	31.42220	75.29719	14:26:52	D	4.40
423	KAPURTHALA	DHILWAN	S-NPP	31.42339	75.25123	12:46:35	D	4.30
424	KAPURTHALA	DHILWAN	S-NPP	31.46498	75.25437	12:46:35	D	2.40
425	KAPURTHALA	DHILWAN	S-NPP	31.46559	75.35306	12:46:35	D	10.40

426	KAPURTHALA	DHILWAN	S-NPP	31.46655	75.35699	12:46:35	D	10.40
427	KAPURTHALA	DHILWAN	S-NPP	31.46751	75.36091	12:46:35	D	13.60
428	KAPURTHALA	DHILWAN	S-NPP	31.47278	75.35917	12:46:35	D	3.80
429	KAPURTHALA	DHILWAN	S-NPP	31.47374	75.36308	12:46:35	D	3.80
430	KAPURTHALA	DHILWAN	S-NPP	31.47470	75.36702	12:46:35	D	7.60
431	KAPURTHALA	DHILWAN	S-NPP	31.47806	75.35742	12:46:35	D	3.80
432	KAPURTHALA	DHILWAN	S-NPP	31.47901	75.36134	12:46:35	D	3.80
433	KAPURTHALA	DHILWAN	S-NPP	31.48425	75.40617	12:46:35	D	2.80
434	KAPURTHALA	DHILWAN	S-NPP	31.48621	75.32064	12:46:35	D	3.50
435	KAPURTHALA	DHILWAN	S-NPP	31.48715	75.31998	12:46:35	D	4.50
436	KAPURTHALA	DHILWAN	S-NPP	31.49169	75.36098	12:46:35	D	3.90
437	KAPURTHALA	DHILWAN	S-NPP	31.49197	75.34432	12:46:35	D	9.00
438	KAPURTHALA	DHILWAN	S-NPP	31.49305	75.34357	12:46:35	D	9.80
439	KAPURTHALA	DHILWAN	S-NPP	31.49725	75.29552	12:46:35	D	2.00
440	KAPURTHALA	DHILWAN	S-NPP	31.49808	75.29500	12:46:35	D	1.50
441	KAPURTHALA	DHILWAN	S-NPP	31.50620	75.39846	14:26:52	D	4.70
442	KAPURTHALA	DHILWAN	S-NPP	31.50947	75.39544	14:26:52	D	5.60
443	KAPURTHALA	DHILWAN	S-NPP	31.52157	75.44444	14:26:52	D	5.60
444	KAPURTHALA	DHILWAN	S-NPP	31.52457	75.44138	14:26:52	D	11.90
445	KAPURTHALA	DHILWAN	S-NPP	31.55834	75.37711	12:46:35	D	1.90
446	KAPURTHALA	KAPURTHALA	S-NPP	31.35807	75.29453	12:46:35	D	2.30
447	KAPURTHALA	KAPURTHALA	S-NPP	31.38558	75.33694	12:46:35	D	2.70
448	KAPURTHALA	KAPURTHALA	S-NPP	31.38713	75.33623	12:46:35	D	2.00
449	KAPURTHALA	NADALA	AQUA	31.50400	75.51300	14:07:32	D	10.70
450	KAPURTHALA	NADALA	AQUA	31.52600	75.44000	14:07:32	D	24.90
451	KAPURTHALA	NADALA	AQUA	31.61800	75.44800	14:07:32	D	20.00
452	KAPURTHALA	NADALA	S-NPP	31.48508	75.50245	12:46:35	D	3.50
453	KAPURTHALA	NADALA	S-NPP	31.50895	75.46108	12:46:35	D	3.80
454	KAPURTHALA	NADALA	S-NPP	31.51113	75.51212	14:26:52	D	6.30
455	KAPURTHALA	NADALA	S-NPP	31.52766	75.42133	12:46:35	D	4.60
456	KAPURTHALA	NADALA	S-NPP	31.52793	75.43743	14:26:52	D	8.80
457	KAPURTHALA	NADALA	S-NPP	31.52823	75.44412	14:26:52	D	8.80
458	KAPURTHALA	NADALA	S-NPP	31.52860	75.42522	12:46:35	D	5.20

459	KAPURTHALA	NADALA	S-NPP	31.52925	75.42038	12:46:35	D	7.20
460	KAPURTHALA	NADALA	S-NPP	31.52972	75.50018	12:46:35	D	3.30
461	KAPURTHALA	NADALA	S-NPP	31.53021	75.42426	12:46:35	D	9.50
462	KAPURTHALA	NADALA	S-NPP	31.53124	75.44103	14:26:52	D	11.90
463	KAPURTHALA	NADALA	S-NPP	31.53258	75.41088	12:46:35	D	5.40
464	KAPURTHALA	NADALA	S-NPP	31.53354	75.41477	12:46:35	D	7.20
465	KAPURTHALA	NADALA	S-NPP	31.54217	75.45686	14:26:52	D	7.20
466	KAPURTHALA	NADALA	S-NPP	31.54510	75.45372	14:26:52	D	5.80
467	KAPURTHALA	NADALA	S-NPP	31.54537	75.46045	14:26:52	D	5.80
468	KAPURTHALA	NADALA	S-NPP	31.57123	75.45266	12:46:35	D	2.90
469	KAPURTHALA	NADALA	S-NPP	31.57874	75.45876	14:26:52	D	2.60
470	KAPURTHALA	NADALA	S-NPP	31.58455	75.46083	12:46:35	D	1.80
471	KAPURTHALA	NADALA	S-NPP	31.58978	75.45911	12:46:35	D	1.80
472	KAPURTHALA	NADALA	S-NPP	31.59458	75.43243	12:46:35	D	4.70
473	KAPURTHALA	NADALA	S-NPP	31.59553	75.43629	12:46:35	D	4.30
474	KAPURTHALA	NADALA	S-NPP	31.61312	75.43884	12:46:35	D	3.10
475	KAPURTHALA	NADALA	S-NPP	31.61406	75.44272	12:46:35	D	3.10
476	KAPURTHALA	NADALA	S-NPP	31.61930	75.44099	12:46:35	D	3.10
477	KAPURTHALA	NADALA	S-NPP	31.62640	75.44698	12:46:35	D	5.70
478	KAPURTHALA	NADALA	S-NPP	31.62881	75.44404	12:46:35	D	7.00
479	KAPURTHALA	NADALA	S-NPP	31.62984	75.55800	14:26:52	D	2.80
480	KAPURTHALA	PHAGWARA	AQUA	31.27300	75.72400	14:07:32	D	12.40
481	KAPURTHALA	PHAGWARA	S-NPP	31.23465	75.80965	12:46:35	D	6.00
482	KAPURTHALA	PHAGWARA	S-NPP	31.26467	75.77699	12:46:35	D	2.20
483	KAPURTHALA	PHAGWARA	S-NPP	31.31427	75.86558	12:46:35	D	5.60
484	KAPURTHALA	PHAGWARA	S-NPP	31.32866	75.73750	14:26:52	D	2.50
485	KAPURTHALA	SULTANPUR LODHI	AQUA	31.23900	75.16400	14:07:32	D	25.70
486	KAPURTHALA	SULTANPUR LODHI	AQUA	31.30500	75.20000	14:07:32	D	20.20
487	KAPURTHALA	SULTANPUR LODHI	S-NPP	31.16883	75.01796	12:46:35	D	5.70
488	KAPURTHALA	SULTANPUR LODHI	S-NPP	31.17321	75.01199	12:46:35	D	5.70
489	KAPURTHALA	SULTANPUR LODHI	S-NPP	31.17424	75.01614	12:46:35	D	5.70
490	KAPURTHALA	SULTANPUR LODHI	S-NPP	31.17526	75.02031	12:46:35	D	9.60
491	KAPURTHALA	SULTANPUR LODHI	S-NPP	31.19145	75.05385	14:26:52	D	6.50

492	KAPURTHALA	SULTANPUR LODHI	S-NPP	31.19172	75.06011	14:26:52	D	6.50
493	KAPURTHALA	SULTANPUR LODHI	S-NPP	31.19187	75.05550	14:26:52	D	8.70
494	KAPURTHALA	SULTANPUR LODHI	S-NPP	31.19217	75.06177	14:26:52	D	10.50
495	KAPURTHALA	SULTANPUR LODHI	S-NPP	31.22618	75.20357	12:46:35	D	1.80
496	LUDHIANA	DEHLON	AQUA	30.78700	75.82900	14:07:32	D	14.10
497	LUDHIANA	DEHLON	S-NPP	30.75928	75.92485	12:46:35	D	4.40
498	LUDHIANA	DEHLON	S-NPP	30.76070	75.83868	12:46:35	D	5.50
499	LUDHIANA	DEHLON	S-NPP	30.83233	75.92583	12:46:35	D	4.50
500	LUDHIANA	DORAHA	S-NPP	30.64621	76.04476	12:46:35	D	1.70
501	LUDHIANA	DORAHA	S-NPP	30.70433	76.02967	14:26:52	D	2.50
502	LUDHIANA	DORAHA	S-NPP	30.70469	76.02697	14:26:52	D	3.40
503	LUDHIANA	DORAHA	S-NPP	30.70506	76.06161	12:46:35	D	2.80
504	LUDHIANA	DORAHA	S-NPP	30.74287	76.03362	12:46:35	D	3.50
505	LUDHIANA	DORAHA	S-NPP	30.74376	76.03735	12:46:35	D	3.50
506	LUDHIANA	JAGRAON	AQUA	30.83000	75.49600	14:07:32	D	12.00
507	LUDHIANA	JAGRAON	S-NPP	30.63932	75.41611	12:46:35	D	3.10
508	LUDHIANA	JAGRAON	S-NPP	30.68756	75.40045	12:46:35	D	7.10
509	LUDHIANA	JAGRAON	S-NPP	30.76251	75.48904	12:46:35	D	2.70
510	LUDHIANA	JAGRAON	S-NPP	30.81857	75.43629	12:46:35	D	4.10
511	LUDHIANA	JAGRAON	S-NPP	30.83457	75.49197	14:26:52	D	4.20
512	LUDHIANA	JAGRAON	S-NPP	30.83728	75.49358	14:26:52	D	5.60
513	LUDHIANA	KHANNA	S-NPP	30.64683	76.14034	12:46:35	D	3.00
514	LUDHIANA	KHANNA	S-NPP	30.67426	76.11580	12:46:35	D	3.10
515	LUDHIANA	KHANNA	S-NPP	30.67689	76.12685	12:46:35	D	5.00
516	LUDHIANA	KHANNA	S-NPP	30.68097	76.07381	12:46:35	D	2.10
517	LUDHIANA	KHANNA	S-NPP	30.68527	76.07185	12:46:35	D	9.40
518	LUDHIANA	KHANNA	S-NPP	30.68614	76.07216	12:46:35	D	8.90
519	LUDHIANA	LUDHIANA-2	AQUA	30.95900	76.08700	14:07:32	D	18.90
520	LUDHIANA	LUDHIANA-2	AQUA	30.96900	75.91800	14:07:32	D	20.70
521	LUDHIANA	LUDHIANA-2	AQUA	30.97300	75.92400	14:07:32	D	26.30
522	LUDHIANA	LUDHIANA-2	S-NPP	30.89217	76.12981	12:46:35	D	2.80
523	LUDHIANA	LUDHIANA-2	S-NPP	30.89222	76.03844	12:46:35	D	5.50
524	LUDHIANA	LUDHIANA-2	S-NPP	30.89269	76.03877	12:46:35	D	5.50

525	LUDHIANA	LUDHIANA-2	S-NPP	30.90294	75.99116	12:46:35	D	5.30
526	LUDHIANA	LUDHIANA-2	S-NPP	30.91798	76.02339	14:26:52	D	9.40
527	LUDHIANA	LUDHIANA-2	S-NPP	30.91825	76.02066	14:26:52	D	6.40
528	LUDHIANA	LUDHIANA-2	S-NPP	30.92579	76.03954	12:46:35	D	6.10
529	LUDHIANA	LUDHIANA-2	S-NPP	30.92663	76.06595	14:26:52	D	7.50
530	LUDHIANA	LUDHIANA-2	S-NPP	30.92692	76.07043	14:26:52	D	7.30
531	LUDHIANA	LUDHIANA-2	S-NPP	30.97783	76.14100	12:46:35	D	2.70
532	LUDHIANA	LUDHIANA-2	S-NPP	30.97870	76.14462	12:46:35	D	2.70
533	LUDHIANA	MACHHIWARA	AQUA	30.94500	76.14900	14:07:32	D	27.00
534	LUDHIANA	MACHHIWARA	S-NPP	30.83861	76.29749	12:46:35	D	3.50
535	LUDHIANA	MACHHIWARA	S-NPP	30.83910	76.29825	12:46:35	D	4.00
536	LUDHIANA	MACHHIWARA	S-NPP	30.88539	76.14769	12:46:35	D	8.00
537	LUDHIANA	MACHHIWARA	S-NPP	30.90945	76.31801	12:46:35	D	2.50
538	LUDHIANA	MACHHIWARA	S-NPP	30.91875	76.21877	12:46:35	D	5.40
539	LUDHIANA	MACHHIWARA	S-NPP	30.94256	76.20341	12:46:35	D	3.50
540	LUDHIANA	MACHHIWARA	S-NPP	30.97124	76.20529	12:46:35	D	6.20
541	LUDHIANA	MACHHIWARA	S-NPP	30.97211	76.20889	12:46:35	D	6.20
542	LUDHIANA	MALOD	S-NPP	30.65953	75.95985	12:46:35	D	3.90
543	LUDHIANA	MALOD	S-NPP	30.66315	75.95824	12:46:35	D	2.00
544	LUDHIANA	MALOD	S-NPP	30.67047	75.98824	12:46:35	D	2.50
545	LUDHIANA	MALOD	S-NPP	30.68148	75.97427	14:26:52	D	3.10
546	LUDHIANA	MALOD	S-NPP	30.68431	75.90674	12:46:35	D	8.50
547	LUDHIANA	PAKHOWAL	S-NPP	30.71527	75.74577	12:46:35	D	2.50
548	LUDHIANA	PAKHOWAL	S-NPP	30.73683	75.71797	12:46:35	D	3.00
549	LUDHIANA	PAKHOWAL	S-NPP	30.73778	75.72185	12:46:35	D	3.00
550	LUDHIANA	RAIKOT	AQUA	30.63100	75.51800	14:07:32	D	9.40
551	LUDHIANA	RAIKOT	AQUA	30.64400	75.54300	14:07:32	D	18.60
552	LUDHIANA	RAIKOT	AQUA	30.65800	75.66500	14:07:32	D	13.60
553	LUDHIANA	RAIKOT	S-NPP	30.62365	75.54058	12:46:35	D	5.50
554	LUDHIANA	RAIKOT	S-NPP	30.62463	75.54458	12:46:35	D	5.50
555	LUDHIANA	RAIKOT	S-NPP	30.62560	75.54857	12:46:35	D	12.60
556	LUDHIANA	RAIKOT	S-NPP	30.64400	75.52969	12:46:35	D	2.50
557	LUDHIANA	RAIKOT	S-NPP	30.70516	75.58897	12:46:35	D	2.90

558	LUDHIANA	SAMRALA	S-NPP	30.74680	76.28020	12:46:35	D	7.20
559	LUDHIANA	SAMRALA	S-NPP	30.82075	76.15150	12:46:35	D	4.30
560	LUDHIANA	SIDHWAN BET	AQUA	30.90200	75.58100	14:07:32	D	14.00
561	LUDHIANA	SIDHWAN BET	S-NPP	30.82377	75.38680	12:46:35	D	6.80
562	LUDHIANA	SIDHWAN BET	S-NPP	30.83010	75.38908	12:46:35	D	2.80
563	LUDHIANA	SIDHWAN BET	S-NPP	30.85057	75.56734	12:46:35	D	1.50
564	LUDHIANA	SIDHWAN BET	S-NPP	30.91546	75.54589	12:46:35	D	4.40
565	LUDHIANA	SIDHWAN BET	S-NPP	30.92124	75.63470	14:26:52	D	5.50
566	LUDHIANA	SIDHWAN BET	S-NPP	30.92372	75.63151	14:26:52	D	5.10
567	LUDHIANA	SIDHWAN BET	S-NPP	30.94611	75.39000	12:46:35	D	2.20
568	LUDHIANA	SIDHWAN BET	S-NPP	30.94750	75.38958	12:46:35	D	7.30
569	LUDHIANA	SIDHWAN BET	S-NPP	30.95008	75.50051	12:46:35	D	4.30
570	LUDHIANA	SIDHWAN BET	S-NPP	30.95144	75.38824	12:46:35	D	5.00
571	LUDHIANA	SIDHWAN BET	S-NPP	30.95412	75.55616	14:26:52	D	6.10
572	LUDHIANA	SUDHAR	S-NPP	30.73650	75.60012	12:46:35	D	1.90
573	LUDHIANA	SUDHAR	S-NPP	30.73903	75.60128	14:26:52	D	3.80
574	LUDHIANA	SUDHAR	S-NPP	30.76797	75.58332	14:26:52	D	7.70
575	MANSA	MANSA	S-NPP	30.02930	75.43700	12:46:35	D	3.60
576	MANSA	MANSA	S-NPP	30.04620	75.31423	12:46:35	D	4.30
577	MANSA	SARDULGARH	S-NPP	29.67609	75.34488	12:46:35	D	2.40
578	MOGA	BAGHA PURANA	S-NPP	30.56566	74.95686	12:46:35	D	2.40
579	MOGA	BAGHA PURANA	S-NPP	30.56867	75.01630	12:46:35	D	8.30
580	MOGA	BAGHA PURANA	S-NPP	30.57655	74.97658	12:46:35	D	1.90
581	MOGA	BAGHA PURANA	S-NPP	30.59035	74.98476	14:26:52	D	4.00
582	MOGA	BAGHA PURANA	S-NPP	30.59087	74.98278	14:26:52	D	2.60
583	MOGA	BAGHA PURANA	S-NPP	30.63234	75.03558	14:26:52	D	4.80
584	MOGA	BAGHA PURANA	S-NPP	30.63819	75.01722	12:46:35	D	1.30
585	MOGA	BAGHA PURANA	S-NPP	30.63976	75.01606	12:46:35	D	2.60
586	MOGA	BAGHA PURANA	S-NPP	30.64734	75.02279	12:46:35	D	5.60
587	MOGA	BAGHA PURANA	S-NPP	30.65130	75.02216	12:46:35	D	5.10
588	MOGA	BAGHA PURANA	S-NPP	30.67450	74.97292	12:46:35	D	2.00
589	MOGA	BAGHA PURANA	S-NPP	30.71181	74.95592	12:46:35	D	1.60
590	MOGA	KOT ISE KHAN AT DHARAMKOT	AQUA	31.00400	75.14800	14:07:32	D	16.20

591	MOGA	KOT ISE KHAN AT DHARAMKOT	AQUA	31.02300	75.22400	14:07:32	D	12.10
592	MOGA	KOT ISE KHAN AT DHARAMKOT	S-NPP	30.86687	75.30258	12:46:35	D	4.70
593	MOGA	KOT ISE KHAN AT DHARAMKOT	S-NPP	30.86788	75.30666	12:46:35	D	5.90
594	MOGA	KOT ISE KHAN AT DHARAMKOT	S-NPP	30.88619	75.05603	14:26:52	D	2.60
595	MOGA	KOT ISE KHAN AT DHARAMKOT	S-NPP	30.89269	75.05564	14:26:52	D	2.60
596	MOGA	KOT ISE KHAN AT DHARAMKOT	S-NPP	30.89960	75.08243	12:46:35	D	3.10
597	MOGA	KOT ISE KHAN AT DHARAMKOT	S-NPP	30.95129	75.33873	14:26:52	D	3.60
598	MOGA	KOT ISE KHAN AT DHARAMKOT	S-NPP	30.95815	75.31654	12:46:35	D	2.50
599	MOGA	KOT ISE KHAN AT DHARAMKOT	S-NPP	30.97052	75.27309	12:46:35	D	3.10
600	MOGA	KOT ISE KHAN AT DHARAMKOT	S-NPP	30.97587	75.27132	12:46:35	D	3.20
601	MOGA	KOT ISE KHAN AT DHARAMKOT	S-NPP	30.98654	75.33778	12:46:35	D	1.70
602	MOGA	KOT ISE KHAN AT DHARAMKOT	S-NPP	30.99732	75.26428	12:46:35	D	2.50
603	MOGA	KOT ISE KHAN AT DHARAMKOT	S-NPP	30.99957	75.32043	12:46:35	D	3.30
604	MOGA	KOT ISE KHAN AT DHARAMKOT	S-NPP	31.00056	75.13869	12:46:35	D	2.20
605	MOGA	KOT ISE KHAN AT DHARAMKOT	S-NPP	31.03189	75.12389	12:46:35	D	3.00
606	MOGA	KOT ISE KHAN AT DHARAMKOT	S-NPP	31.03395	75.13212	12:46:35	D	3.40
607	MOGA	KOT ISE KHAN AT DHARAMKOT	S-NPP	31.03498	75.13625	12:46:35	D	3.90
608	MOGA	KOT ISE KHAN AT DHARAMKOT	S-NPP	31.05804	75.18200	12:46:35	D	2.00
609	MOGA	MOGA-1	S-NPP	30.72745	75.16126	12:46:35	D	3.80
610	MOGA	MOGA-1	S-NPP	30.86654	75.32466	12:46:35	D	6.90
611	MOGA	MOGA-2	S-NPP	30.74678	75.07325	12:46:35	D	2.80
612	MOGA	MOGA-2	S-NPP	30.80296	75.04586	12:46:35	D	2.20
613	MOGA	NIHAL SINGH	S-NPP	30.54777	75.30239	12:46:35	D	4.30
614	MOGA	NIHAL SINGH	S-NPP	30.66615	75.33712	12:46:35	D	2.90
615	MUKTSAR	KOT BHAI AT GIDDERBAHA	S-NPP	30.35179	74.64101	12:46:35	D	2.30
616	MUKTSAR	KOT BHAI AT GIDDERBAHA	S-NPP	30.36585	74.55222	12:46:35	D	9.90
617	MUKTSAR	KOT BHAI AT GIDDERBAHA	S-NPP	30.38490	74.74725	12:46:35	D	3.70
618	MUKTSAR	KOT BHAI AT GIDDERBAHA	S-NPP	30.41276	74.71373	12:46:35	D	6.40
619	MUKTSAR	KOT BHAI AT GIDDERBAHA	S-NPP	30.41389	74.71822	12:46:35	D	6.40
620	MUKTSAR	KOT BHAI AT GIDDERBAHA	S-NPP	30.46272	74.66457	14:26:52	D	5.30
621	MUKTSAR	KOT BHAI AT GIDDERBAHA	S-NPP	30.46475	74.66390	14:26:52	D	3.90
622	MUKTSAR	LAMBI	S-NPP	30.01004	74.55244	12:46:35	D	3.40
623	MUKTSAR	LAMBI	S-NPP	30.10152	74.38004	12:46:35	D	2.00

624	MUKTSAR	LAMBI	S-NPP	30.10250	74.57725	12:46:35	D	2.70
625	MUKTSAR	LAMBI	S-NPP	30.10271	74.57800	12:46:35	D	2.00
626	MUKTSAR	LAMBI	S-NPP	30.11462	74.60204	14:26:52	D	3.40
627	MUKTSAR	MALOUT	S-NPP	30.18237	74.53187	12:46:35	D	14.90
628	MUKTSAR	MALOUT	S-NPP	30.18309	74.53120	12:46:35	D	7.00
629	MUKTSAR	MALOUT	S-NPP	30.18426	74.53584	12:46:35	D	7.00
630	MUKTSAR	MALOUT	S-NPP	30.19370	74.43198	12:46:35	D	3.10
631	MUKTSAR	MALOUT	S-NPP	30.20168	74.40188	14:26:52	D	3.50
632	MUKTSAR	MALOUT	S-NPP	30.32267	74.43092	12:46:35	D	2.60
633	MUKTSAR	MALOUT	S-NPP	30.33320	74.35098	12:46:35	D	4.90
634	MUKTSAR	MALOUT	S-NPP	30.38843	74.46255	14:26:52	D	3.90
635	MUKTSAR	MALOUT	S-NPP	30.40847	74.48390	14:26:52	D	3.10
636	MUKTSAR	MALOUT	S-NPP	30.40981	74.48622	12:46:35	D	7.80
637	MUKTSAR	MUKTSAR	S-NPP	30.36469	74.54765	12:46:35	D	7.90
638	MUKTSAR	MUKTSAR	S-NPP	30.41075	74.48725	12:46:35	D	8.80
639	MUKTSAR	MUKTSAR	S-NPP	30.41763	74.58800	12:46:35	D	7.30
640	MUKTSAR	MUKTSAR	S-NPP	30.41800	74.58940	12:46:35	D	6.40
641	MUKTSAR	MUKTSAR	S-NPP	30.42326	74.58612	12:46:35	D	1.50
642	MUKTSAR	MUKTSAR	S-NPP	30.43527	74.53761	12:46:35	D	6.00
643	MUKTSAR	MUKTSAR	S-NPP	30.43974	74.53116	12:46:35	D	6.00
644	MUKTSAR	MUKTSAR	S-NPP	30.44091	74.53574	12:46:35	D	6.00
645	MUKTSAR	MUKTSAR	S-NPP	30.49995	74.40561	12:46:35	D	4.70
646	MUKTSAR	MUKTSAR	S-NPP	30.50027	74.40693	12:46:35	D	6.10
647	MUKTSAR	MUKTSAR	S-NPP	30.50926	74.68496	12:46:35	D	4.10
648	MUKTSAR	MUKTSAR	S-NPP	30.58916	74.43549	14:26:52	D	9.50
649	MUKTSAR	MUKTSAR	S-NPP	30.58945	74.44112	14:26:52	D	9.50
650	PATHANKOT	GHAROTA	S-NPP	32.19535	75.49686	12:46:35	D	4.80
651	PATHANKOT	SUJANPUR	AQUA	32.33200	75.57200	14:07:32	D	12.30
652	PATHANKOT	SUJANPUR	S-NPP	32.27772	75.54340	12:46:35	D	3.20
653	PATIALA	GHANAUR	S-NPP	30.38725	76.55650	14:26:52	D	3.90
654	PATIALA	NABHA	S-NPP	30.48206	76.21039	12:46:35	D	6.50
655	PATIALA	NABHA	S-NPP	30.48293	76.21407	12:46:35	D	6.80
656	PATIALA	NABHA	S-NPP	30.49764	76.29971	12:46:35	D	5.70

657	PATIALA	NABHA	S-NPP	30.52925	76.13113	12:46:35	D	2.40
658	PATIALA	PATIALA	S-NPP	30.32405	76.31026	12:46:35	D	5.90
659	PATIALA	PATIALA	S-NPP	30.41270	76.33157	14:26:52	D	7.10
660	PATIALA	PATIALA	S-NPP	30.41315	76.33195	14:26:52	D	10.50
661	PATIALA	PATIALA	S-NPP	30.41317	76.38371	12:46:35	D	4.60
662	PATIALA	PATIALA	S-NPP	30.48314	76.33152	12:46:35	D	2.10
663	PATIALA	RAJPURA	S-NPP	30.52683	76.56245	12:46:35	D	2.50
664	PATIALA	SAMANA	S-NPP	30.18632	76.05827	12:46:35	D	4.80
665	PATIALA	SAMANA	S-NPP	30.21375	76.21916	12:46:35	D	3.80
666	PATIALA	SANAUR	S-NPP	30.30761	76.54424	12:46:35	D	2.30
667	PATIALA	SHAMBU KALAN	S-NPP	30.49569	76.49887	14:26:52	D	4.90
668	RUPNAGAR	CHAMKAUR SAHIB	S-NPP	30.95289	76.45564	12:46:35	D	4.70
669	RUPNAGAR	CHAMKAUR SAHIB	S-NPP	30.95371	76.45912	12:46:35	D	4.70
670	RUPNAGAR	NURPUR BEDI	S-NPP	31.11723	76.54773	12:46:35	D	4.20
671	RUPNAGAR	NURPUR BEDI	S-NPP	31.11802	76.55114	12:46:35	D	5.40
672	SANGRUR	BHAWANIGARH	S-NPP	30.19643	75.93558	12:46:35	D	4.00
673	SANGRUR	BHAWANIGARH	S-NPP	30.19736	75.93945	12:46:35	D	5.30
674	SANGRUR	BHAWANIGARH	S-NPP	30.19995	75.93806	12:46:35	D	5.10
675	SANGRUR	BHAWANIGARH	S-NPP	30.26345	76.01283	12:46:35	D	7.80
676	SANGRUR	BHAWANIGARH	S-NPP	30.26961	76.01498	12:46:35	D	5.80
677	SANGRUR	BHAWANIGARH	S-NPP	30.28811	76.11482	12:46:35	D	7.20
678	SANGRUR	BHAWANIGARH	S-NPP	30.28847	75.97622	12:46:35	D	5.50
679	SANGRUR	BHAWANIGARH	S-NPP	30.28902	76.11857	12:46:35	D	7.20
680	SANGRUR	BHAWANIGARH	S-NPP	30.28938	75.98003	12:46:35	D	5.50
681	SANGRUR	MALERKOTLA-1	S-NPP	30.46298	75.80952	12:46:35	D	7.50
682	SANGRUR	MALERKOTLA-1	S-NPP	30.46392	75.81339	12:46:35	D	7.00
683	SANGRUR	MALERKOTLA-1	S-NPP	30.46859	76.04185	12:46:35	D	2.90
684	SANGRUR	MALERKOTLA-1	S-NPP	30.47170	76.00847	12:46:35	D	3.10
685	SANGRUR	MALERKOTLA-1	S-NPP	30.57960	75.97720	12:46:35	D	2.10
686	SANGRUR	MALERKOTLA-2	AQUA	30.52200	75.73400	14:07:32	D	16.20
687	SANGRUR	MALERKOTLA-2	AQUA	30.60900	75.68600	14:07:32	D	18.00
688	SANGRUR	MALERKOTLA-2	S-NPP	30.47852	75.85035	12:46:35	D	2.90
689	SANGRUR	MALERKOTLA-2	S-NPP	30.50227	75.83733	14:26:52	D	4.00

690	SANGRUR	MALERKOTLA-2	S-NPP	30.62026	75.73695	12:46:35	D	2.60
691	SANGRUR	SANGRUR	S-NPP	30.19900	75.93420	12:46:35	D	3.70
692	SANGRUR	SHER PUR	S-NPP	30.50098	75.77127	12:46:35	D	3.20
693	SANGRUR	SHER PUR	S-NPP	30.50483	75.77096	12:46:35	D	2.50
694	SANGRUR	SUNAM	S-NPP	30.05113	75.71561	12:46:35	D	2.30
695	SANGRUR	SUNAM	S-NPP	30.05141	75.71520	12:46:35	D	2.50
696	SAS NAGAR (MOHALD)	MAJRI	S-NPP	30.90809	76.67014	14:26:52	D	4.80
697	SBS NAGAR	AUR	S-NPP	31.04647	75.97220	14:26:52	D	3.90
698	SBS NAGAR	AUR	S-NPP	31.09921	75.93485	12:46:35	D	8.10
699	SBS NAGAR	AUR	S-NPP	31.09966	75.93522	12:46:35	D	8.30
700	SBS NAGAR	AUR	S-NPP	31.10011	75.93855	12:46:35	D	8.10
701	SBS NAGAR	AUR	S-NPP	31.10054	75.93893	12:46:35	D	8.30
702	SBS NAGAR	AUR	S-NPP	31.10262	76.01777	12:46:35	D	18.90
703	SBS NAGAR	AUR	S-NPP	31.10264	76.01710	12:46:35	D	15.50
704	SBS NAGAR	AUR	S-NPP	31.10349	76.02145	12:46:35	D	15.50
705	SBS NAGAR	AUR	S-NPP	31.10354	76.02076	12:46:35	D	14.90
706	SBS NAGAR	AUR	S-NPP	31.12832	75.91801	14:26:52	D	9.70
707	SBS NAGAR	AUR	S-NPP	31.13148	75.97622	12:46:35	D	5.40
708	SBS NAGAR	AUR	S-NPP	31.13417	75.91370	14:26:52	D	3.60
709	SBS NAGAR	AUR	S-NPP	31.14462	75.99855	14:26:52	D	10.30
710	SBS NAGAR	AUR	S-NPP	31.14484	75.99552	14:26:52	D	6.20
711	SBS NAGAR	BALACHAUR	S-NPP	31.05495	76.25465	12:46:35	D	2.70
712	SBS NAGAR	BANGA	AQUA	31.15800	75.94200	14:07:32	D	17.60
713	SBS NAGAR	BANGA	S-NPP	31.14510	76.00267	14:26:52	D	9.40
714	SBS NAGAR	BANGA	S-NPP	31.15436	75.93307	12:46:35	D	3.20
715	SBS NAGAR	BANGA	S-NPP	31.15928	76.02261	12:46:35	D	6.10
716	SBS NAGAR	BANGA	S-NPP	31.16016	76.02627	12:46:35	D	9.40
717	SBS NAGAR	BANGA	S-NPP	31.16267	75.94080	14:26:52	D	4.70
718	SBS NAGAR	BANGA	S-NPP	31.16298	75.94788	14:26:52	D	4.70
719	SBS NAGAR	BANGA	S-NPP	31.16349	75.94474	14:26:52	D	5.40
720	SBS NAGAR	BANGA	S-NPP	31.17304	76.03393	12:46:35	D	4.80
721	SBS NAGAR	BANGA	S-NPP	31.17392	76.03758	12:46:35	D	9.00
722	SBS NAGAR	BANGA	S-NPP	31.20803	76.01872	12:46:35	D	4.40

723	SBS NAGAR	BANGA	S-NPP	31.20890	76.02238	12:46:35	D	4.40
724	SBS NAGAR	BANGA	S-NPP	31.21177	75.85332	12:46:35	D	3.50
725	SBS NAGAR	BANGA	S-NPP	31.21694	75.85167	12:46:35	D	1.60
726	SBS NAGAR	BANGA	S-NPP	31.25638	75.92283	12:46:35	D	2.70
727	SBS NAGAR	NAWAN SHAHR	S-NPP	31.14117	76.13004	12:46:35	D	1.80
728	SBS NAGAR	NAWAN SHAHR	S-NPP	31.16980	76.06635	12:46:35	D	3.60
729	SBS NAGAR	SAROYA	S-NPP	31.14465	76.21862	12:46:35	D	2.40
730	SBS NAGAR	SAROYA	S-NPP	31.17588	76.25879	12:46:35	D	2.60
731	SBS NAGAR	SAROYA	S-NPP	31.17745	76.25746	12:46:35	D	4.90
732	TARN TARAN	BHIKHIWIND	AQUA	31.35100	74.74200	14:07:32	D	12.00
733	TARN TARAN	BHIKHIWIND	S-NPP	31.27048	74.66206	12:46:35	D	2.90
734	TARN TARAN	BHIKHIWIND	S-NPP	31.33148	74.57896	14:26:52	D	9.20
735	TARN TARAN	BHIKHIWIND	S-NPP	31.33177	74.58486	14:26:52	D	7.80
736	TARN TARAN	BHIKHIWIND	S-NPP	31.35085	74.58374	14:26:52	D	2.40
737	TARN TARAN	BHIKHIWIND	S-NPP	31.38980	74.68993	14:26:52	D	2.40
738	TARN TARAN	CHOHLA SAHIB	S-NPP	31.23132	74.99282	12:46:35	D	2.30
739	TARN TARAN	CHOHLA SAHIB	S-NPP	31.25283	74.96874	14:26:52	D	2.40
740	TARN TARAN	CHOHLA SAHIB	S-NPP	31.27047	75.05612	12:46:35	D	17.10
741	TARN TARAN	CHOHLA SAHIB	S-NPP	31.27150	75.06026	12:46:35	D	11.90
742	TARN TARAN	CHOHLA SAHIB	S-NPP	31.30980	75.09506	14:26:52	D	7.60
743	TARN TARAN	CHOHLA SAHIB	S-NPP	31.31006	75.10139	14:26:52	D	8.70
744	TARN TARAN	CHOHLA SAHIB	S-NPP	31.31119	75.09785	14:26:52	D	11.50
745	TARN TARAN	GANDIWIND TATLA	AQUA	31.46300	74.65400	14:07:32	D	19.40
746	TARN TARAN	GANDIWIND TATLA	S-NPP	31.46993	74.64989	12:46:35	D	4.80
747	TARN TARAN	GANDIWIND TATLA	S-NPP	31.47120	74.64908	14:26:52	D	2.90
748	TARN TARAN	GANDIWIND TATLA	S-NPP	31.47540	74.64805	12:46:35	D	4.80
749	TARN TARAN	GANDIWIND TATLA	S-NPP	31.49294	74.62334	12:46:35	D	5.30
750	TARN TARAN	GANDIWIND TATLA	S-NPP	31.52724	74.78325	12:46:35	D	3.10
751	TARN TARAN	KHADUR SAHIB	S-NPP	31.40419	75.05629	12:46:35	D	3.70
752	TARN TARAN	KHADUR SAHIB	S-NPP	31.41730	75.06511	12:46:35	D	3.10
753	TARN TARAN	KHADUR SAHIB	S-NPP	31.43246	75.22491	14:26:52	D	3.30
754	TARN TARAN	KHADUR SAHIB	S-NPP	31.43392	75.22308	14:26:52	D	4.10
755	TARN TARAN	KHADUR SAHIB	S-NPP	31.44950	75.05445	12:46:35	D	4.70

756	TARN TARAN	KHADUR SAHIB	S-NPP	31.45544	75.14595	14:26:52	D	5.10
757	TARN TARAN	KHADUR SAHIB	S-NPP	31.46695	75.19337	12:46:35	D	1.80
758	TARN TARAN	NAUSHERA PANNUAN	S-NPP	31.29737	74.95715	14:26:52	D	1.90
759	TARN TARAN	NAUSHERA PANNUAN	S-NPP	31.32273	74.94002	12:46:35	D	3.50
760	TARN TARAN	NAUSHERA PANNUAN	S-NPP	31.32377	74.94420	12:46:35	D	8.60
761	TARN TARAN	NAUSHERA PANNUAN	S-NPP	31.34983	74.96662	14:26:52	D	4.30
762	TARN TARAN	PATTI	S-NPP	31.15247	74.78497	12:46:35	D	4.10
763	TARN TARAN	PATTI	S-NPP	31.16489	74.90160	14:26:52	D	3.40
764	TARN TARAN	PATTI	S-NPP	31.16687	74.90041	12:46:35	D	4.90
765	TARN TARAN	PATTI	S-NPP	31.16895	74.89961	12:46:35	D	5.60
766	TARN TARAN	PATTI	S-NPP	31.23864	74.74770	12:46:35	D	3.30
767	TARN TARAN	PATTI	S-NPP	31.24069	74.74649	12:46:35	D	2.80
768	TARN TARAN	PATTI	S-NPP	31.24176	74.75079	12:46:35	D	4.30
769	TARN TARAN	PATTI	S-NPP	31.24848	74.76302	12:46:35	D	5.90
770	TARN TARAN	PATTI	S-NPP	31.24910	74.75440	14:26:52	D	3.10
771	TARN TARAN	PATTI	S-NPP	31.24939	74.76041	14:26:52	D	3.10
772	TARN TARAN	PATTI	S-NPP	31.25043	74.76186	12:46:35	D	7.00
773	TARN TARAN	PATTI	S-NPP	31.25202	74.81486	14:26:52	D	3.10
774	TARN TARAN	PATTI	S-NPP	31.25551	74.75404	14:26:52	D	3.10
775	TARN TARAN	PATTI	S-NPP	31.25875	74.82058	14:26:52	D	3.10
776	TARN TARAN	PATTI	S-NPP	31.27868	74.88191	12:46:35	D	3.00
777	TARN TARAN	PATTI	S-NPP	31.27990	74.88116	12:46:35	D	2.70
778	TARN TARAN	PATTI	S-NPP	31.28769	74.88335	14:26:52	D	5.30
779	TARN TARAN	PATTI	S-NPP	31.28783	74.88638	14:26:52	D	5.80
780	TARN TARAN	PATTI	S-NPP	31.29497	74.87644	12:46:35	D	4.60
781	TARN TARAN	PATTI	S-NPP	31.30170	74.83298	12:46:35	D	3.20
782	TARN TARAN	PATTI	S-NPP	31.30347	74.91015	12:46:35	D	2.70
783	TARN TARAN	PATTI	S-NPP	31.30461	74.82714	14:26:52	D	3.40
784	TARN TARAN	PATTI	S-NPP	31.30501	74.82267	12:46:35	D	4.50
785	TARN TARAN	PATTI	S-NPP	31.31805	74.83858	14:26:52	D	3.50
786	TARN TARAN	PATTI	S-NPP	31.32122	74.84021	12:46:35	D	2.60
787	TARN TARAN	TARN TARAN	S-NPP	31.40281	74.82220	12:46:35	D	2.40
788	TARN TARAN	TARN TARAN	S-NPP	31.40922	74.85186	14:26:52	D	3.40

789	TARN TARAN	TARN TARAN	S-NPP	31.40968	74.84698	14:26:52	D	2.20
790	TARN TARAN	TARN TARAN	S-NPP	31.42987	74.97630	12:46:35	D	2.20
791	TARN TARAN	TARN TARAN	S-NPP	31.48424	74.91312	12:46:35	D	3.10
792	TARN TARAN	TARN TARAN	S-NPP	31.48913	74.88866	14:26:52	D	1.90
793	TARN TARAN	TARN TARAN	S-NPP	31.49118	74.96476	12:46:35	D	2.50
794	TARN TARAN	TARN TARAN	S-NPP	31.49359	74.79002	12:46:35	D	2.20
795	TARN TARAN	TARN TARAN	S-NPP	31.50453	74.92432	12:46:35	D	3.20
796	TARN TARAN	TARN TARAN	S-NPP	31.51196	74.93083	12:46:35	D	2.40
797	TARN TARAN	TARN TARAN	S-NPP	31.51228	74.93349	12:46:35	D	2.00
798	TARN TARAN	VALTOHA	S-NPP	31.13429	74.65505	12:46:35	D	3.50
799	TARN TARAN	VALTOHA	S-NPP	31.13783	74.61369	14:26:52	D	3.00
800	TARN TARAN	VALTOHA	S-NPP	31.14201	74.61461	12:46:35	D	2.50
801	TARN TARAN	VALTOHA	S-NPP	31.14312	74.61900	12:46:35	D	2.50
802	TARN TARAN	VALTOHA	S-NPP	31.17508	74.67449	12:46:35	D	2.70
803	TARN TARAN	VALTOHA	S-NPP	31.18264	74.61694	14:26:52	D	1.00
804	TARN TARAN	VALTOHA	S-NPP	31.18480	74.61476	14:26:52	D	3.10
805	TARN TARAN	VALTOHA	S-NPP	31.18509	74.61913	12:46:35	D	4.30
806	TARN TARAN	VALTOHA	S-NPP	31.18610	74.67081	12:46:35	D	3.40
807	TARN TARAN	VALTOHA	S-NPP	31.19276	74.52151	12:46:35	D	4.70
808	TARN TARAN	VALTOHA	S-NPP	31.19729	74.52392	12:46:35	D	2.80
809	TARN TARAN	VALTOHA	S-NPP	31.22653	74.70030	12:46:35	D	1.70
810	TARN TARAN	VALTOHA	S-NPP	31.22889	74.69894	12:46:35	D	3.30
811	TARN TARAN	VALTOHA	S-NPP	31.22996	74.70329	12:46:35	D	3.30
812	TARN TARAN	VALTOHA	S-NPP	31.23006	74.67970	12:46:35	D	5.10
813	TARN TARAN	VALTOHA	S-NPP	31.23114	74.68405	12:46:35	D	5.10
814	TARN TARAN	VALTOHA	S-NPP	31.23203	74.69846	12:46:35	D	1.70
815	TARN TARAN	VALTOHA	S-NPP	31.23310	74.67930	12:46:35	D	10.30
816	TARN TARAN	VALTOHA	S-NPP	31.27901	74.58546	14:26:52	D	2.60
817	TARN TARAN	VALTOHA	S-NPP	31.28653	74.55267	12:46:35	D	4.20
818	TARN TARAN	VALTOHA	S-NPP	31.29037	74.55091	12:46:35	D	2.70

Details of residue burning events in Haryana on 16-May-2023

S. No.	District	Tehsil / Block	Satellite	Latitude	Longitude	ACQ_TIME	Day / Night	Fire Power (W/m2)
1	AMBALA	AMBALA-II	S-NPP	30.29726	76.85411	12:46:35	D	1.90
2	AMBALA	BARARA	S-NPP	30.17488	77.10081	12:46:35	D	2.00
3	AMBALA	NARAINGARH	S-NPP	30.34846	77.12586	14:26:52	D	5.70
4	AMBALA	NARAINGARH	S-NPP	30.35025	77.13247	14:26:52	D	7.80
5	FATEHABAD	FATEHABAD	S-NPP	29.48483	75.57963	12:46:35	D	4.40
6	JIND	SAFIDON	S-NPP	29.40226	76.71156	12:46:35	D	2.40
7	KAITHAL	GUHLA	S-NPP	30.16095	76.41279	14:26:52	D	3.30
8	KAITHAL	KAITHAL	S-NPP	29.76624	76.43855	12:46:35	D	1.50
9	KAITHAL	KAITHAL	S-NPP	29.76958	76.43681	12:46:35	D	2.40
10	KARNAL	INDRI	S-NPP	29.92165	77.20064	12:46:35	D	1.60
11	KARNAL	KARNAL	S-NPP	29.66507	77.13091	12:46:35	D	1.70
12	KURUKSHETRA	ISMAILABAD	S-NPP	30.14301	76.64247	12:46:35	D	2.30
13	KURUKSHETRA	PEHOWA	S-NPP	29.98591	76.69565	12:46:35	D	3.00
14	ROHTAK	LAKHAN MAJRA	S-NPP	29.04548	76.43695	12:46:35	D	4.10
15	SIRSA	BARAGUNDA	S-NPP	29.60798	75.04671	12:46:35	D	3.90
16	SIRSA	NATHUSARI CHOPTA	S-NPP	29.51013	75.21762	12:46:35	D	3.30
17	SIRSA	ODHAN	S-NPP	29.75140	74.91389	12:46:35	D	3.00
18	SIRSA	ODHAN	S-NPP	29.75184	74.91013	12:46:35	D	2.90
19	SONIPAT	MUNDLANA	S-NPP	29.17673	76.82743	12:46:35	D	3.90
20	SONIPAT	MUNDLANA	S-NPP	29.18629	76.79765	12:46:35	D	4.00
21	YAMUNANAGAR	RADAUR	S-NPP	30.01287	77.25948	12:46:35	D	1.40

Details of residue burning events in Uttar Pradesh on 16-May-2023

S. No.	District	Tehsil / Block	Satellite	Latitude	Longitude	ACQ_TIME	Day / Night	Fire Power (W/m2)
1	FATEHPUR	KHAGA	S-NPP	25.93329	81.09898	12:46:35	D	7.80
2	GORAKHPUR	GORAKHPUR	S-NPP	26.84533	83.44105	01:36:35	N	1.10
3	HAMIRPUR	RATH	S-NPP	25.60401	79.46532	12:46:35	D	13.20
4	HAMIRPUR	RATH	S-NPP	25.65850	79.51543	12:46:35	D	22.40
5	HAMIRPUR	RATH	S-NPP	25.66022	79.51746	12:46:35	D	18.10
6	HARDOI	BILGRAM	S-NPP	27.28336	80.03861	12:46:35	D	6.40
7	HARDOI	HARDOI	S-NPP	27.37060	80.18103	12:46:35	D	3.00
8	HARDOI	SANDILA	S-NPP	27.17748	80.28214	12:46:35	D	3.00
9	JHANSI	MOTH	S-NPP	25.65565	78.83671	12:46:35	D	7.40
10	JHANSI	MOTH	S-NPP	25.87703	78.94015	12:46:35	D	11.20
11	KANPUR	GHATAMPUR	S-NPP	26.14877	80.36494	12:46:35	D	5.80
12	KANPUR DEHAT	RASULABAD	S-NPP	26.74349	79.84345	12:46:35	D	4.60
13	KANPUR DEHAT	RASULABAD	S-NPP	26.74461	79.84869	12:46:35	D	5.50
14	KANPUR DEHAT	SIKANDRA	S-NPP	26.52914	79.75673	01:36:35	N	0.40
15	KHERI	PALIA KALAN	S-NPP	28.47215	80.59538	12:46:35	D	2.40
16	LALITPUR	TALBEHAT	S-NPP	24.96280	78.54865	12:46:35	D	6.90
17	MEERUT	MEERUT	S-NPP	28.89058	77.64967	12:46:35	D	1.80
18	PILHIBHIT	PILHIBHIT	S-NPP	28.75700	79.91652	12:46:35	D	2.70
19	RAMPUR	BILASPUR	S-NPP	28.93794	79.30502	12:46:35	D	5.40
20	SHAHJAHANPUR	PUWANYA	S-NPP	28.18945	80.26038	12:46:35	D	3.50
21	SHAHJAHANPUR	SHAHJAHANPUR	S-NPP	27.74634	79.75446	12:46:35	D	3.40
22	SHAHJAHANPUR	SHAHJAHANPUR	S-NPP	27.91010	79.83270	12:46:35	D	8.30
23	SHAHJAHANPUR	SHAHJAHANPUR	S-NPP	27.91182	79.83435	12:46:35	D	6.80
24	SHAHJAHANPUR	TILHAR	S-NPP	27.95813	79.60680	12:46:35	D	5.10
25	SIDDHARTHANAGAR	ITWA	S-NPP	27.35072	82.63785	01:36:35	N	0.80
26	SONBHADRA	REBUTSHGANJ	S-NPP	24.68566	83.12038	01:36:35	N	0.40
27	UNNAO	HASANGANJ	S-NPP	26.69721	80.51083	12:46:35	D	9.90

Details of wheat residue burning events in Madhya Pradesh on 16-May-2023

S. No.	District	Tehsil / Block	Satellite	Latitude	Longitude	ACQ_TIME	Day / Night	Fire Power (W/m ²)
1	BETUL	AMLAL	S-NPP	21.95835	78.14372	12:46:35	D	1.60
2	BHIND	GOHAD	S-NPP	26.43609	78.40926	12:46:35	D	8.50
3	BHOPAL	HUZUR	S-NPP	23.38706	77.46748	14:26:52	D	8.30
4	CHHATARPUR	BARAMALEHRA	S-NPP	24.46308	79.02981	12:46:35	D	3.70
5	CHHATARPUR	BARAMALEHRA	S-NPP	24.55097	79.19105	12:46:35	D	7.00
6	CHHATARPUR	BARAMALEHRA	S-NPP	24.55165	79.19416	12:46:35	D	6.90
7	CHHATARPUR	CHHATARPUR	S-NPP	24.92336	79.48041	01:36:35	N	1.10
8	CHHATARPUR	NOWGOAN	S-NPP	25.02032	79.45534	01:36:35	N	0.50
9	CHHATARPUR	NOWGOAN	S-NPP	25.02103	79.45470	01:36:35	N	0.50
10	CHHATARPUR	RAJNAGAR	AQUA	25.01000	79.98800	14:07:32	D	22.60
11	CHHINDWARA	CHHINDWARA	S-NPP	21.94329	78.93248	12:46:35	D	2.20
12	DAMOH	BATIAGARH	S-NPP	24.17717	79.58402	01:36:35	N	0.70
13	DAMOH	DAMOH	S-NPP	23.79316	79.52825	12:46:35	D	5.80
14	DAMOH	DAMOH	S-NPP	23.79337	79.52989	12:46:35	D	6.30
15	DATIA	BHANDER	S-NPP	25.57149	78.62832	01:36:35	N	1.90
16	DATIA	DATIA	S-NPP	25.69116	78.57506	12:46:35	D	10.90
17	DATIA	SEONDHA	S-NPP	25.92677	78.69535	12:46:35	D	7.00
18	DHAR	BADNAWAR	S-NPP	22.97846	75.31026	01:36:35	N	0.80
19	DHAR	MANAWAR	S-NPP	22.26545	75.13235	01:36:35	N	0.80
20	GUNA	GUNA	S-NPP	24.96245	76.96474	01:36:35	N	1.90
21	GUNA	GUNA	S-NPP	24.96415	76.96627	01:36:35	N	2.40
22	GWALIOR	DABRA	S-NPP	25.80524	78.22722	12:46:35	D	5.30
23	HARDA	KHIRKIYAN	S-NPP	22.15024	77.14185	12:46:35	D	4.70
24	KATNI	BAHURIBAND	S-NPP	23.64724	80.01653	12:46:35	D	13.30
25	KATNI	BAHURIBAND	S-NPP	23.65683	80.18212	12:46:35	D	6.30
26	KATNI	BAHURIBAND	S-NPP	23.66158	80.18091	12:46:35	D	6.30
27	KATNI	BIJERAGHOGARH	AQUA	23.95200	80.69100	14:07:32	D	43.90
28	KATNI	MURBARA	S-NPP	23.69402	80.35983	12:46:35	D	12.40
29	KATNI	RITHI	S-NPP	23.87121	80.21299	12:46:35	D	12.00
30	MANDLA	NAINPUR	S-NPP	22.38441	80.18649	12:46:35	D	6.50

31	MANDSAUR	SITAMAU	S-NPP	23.85991	75.33738	12:46:35	D	7.40
32	MORENA	JORA	S-NPP	26.35315	77.59913	14:26:52	D	3.40
33	MORENA	SABALGARH	S-NPP	26.19275	77.29166	12:46:35	D	7.80
34	MORENA	SABALGARH	S-NPP	26.30181	77.46228	12:46:35	D	3.40
35	MORENA	SABALGARH	S-NPP	26.30709	77.46081	12:46:35	D	3.40
36	PANNA	GUNAUR	S-NPP	24.40792	80.10067	01:36:35	N	1.10
37	PANNA	GUNAUR	S-NPP	24.41020	80.09942	01:36:35	N	1.30
38	PANNA	SHAHNAGAR	S-NPP	23.95266	80.34319	12:46:35	D	14.70
39	PANNA	SHAHNAGAR	S-NPP	23.95905	80.34493	12:46:35	D	30.70
40	RAISEN	BARELI	S-NPP	22.93968	78.03930	12:46:35	D	1.90
41	RAISEN	BARELI	S-NPP	23.05069	78.20749	12:46:35	D	5.80
42	RAISEN	GAIRATGANJ	S-NPP	23.45648	78.39877	01:36:35	N	1.50
43	RAISEN	GOHARGANJ	S-NPP	23.13103	77.61647	01:36:35	N	0.50
44	RAISEN	RAISEN	S-NPP	23.40905	77.71748	01:36:35	N	4.70
45	RAISEN	RAISEN	S-NPP	23.40941	77.71414	01:36:35	N	8.60
46	SAGAR	KESALI	S-NPP	23.47281	78.91660	12:46:35	D	6.00
47	SAGAR	SAGAR	S-NPP	23.64222	78.77137	12:46:35	D	8.10
48	SAGAR	SAGAR	S-NPP	23.70930	78.58503	12:46:35	D	5.60
49	SATNA	RAGURAJNAGAR	S-NPP	24.71135	80.67665	01:36:35	N	0.30
50	SATNA	UCHAHAR	S-NPP	24.39696	80.81818	01:36:35	N	0.80
51	SEONI	SEONI	S-NPP	22.18767	79.57887	12:46:35	D	10.50
52	SHAJAPUR	SUJALPUR	S-NPP	23.39536	76.76894	12:46:35	D	6.20
53	SHIVPURI	NARWAR	S-NPP	25.73993	77.98590	12:46:35	D	8.00
54	SHIVPURI	NARWAR	S-NPP	25.74072	77.98942	12:46:35	D	8.00
55	SIDHI	GOADBANAS	S-NPP	24.35094	81.83018	12:46:35	D	6.50
56	TIKAMGARH	BALDEOGARH	S-NPP	24.71891	79.10329	12:46:35	D	6.80
57	TIKAMGARH	TIKAMGARH	S-NPP	24.48044	78.96409	12:46:35	D	17.80
58	TIKAMGARH	TIKAMGARH	S-NPP	24.64342	78.91726	12:46:35	D	8.90
59	TIKAMGARH	TIKAMGARH	S-NPP	24.64597	78.91647	12:46:35	D	9.30
60	UJJAIN	BARNAGAR	S-NPP	23.00263	75.50226	12:46:35	D	9.50
61	UMARIA	BANDHOGARH	AQUA	23.65500	80.69700	14:07:32	D	33.10
62	UMARIA	BANDHOGARH	S-NPP	23.66484	80.69599	12:46:35	D	7.60
63	UMARIA	BANDHOGARH	S-NPP	23.66592	80.70125	12:46:35	D	7.60
64	UMARIA	BANDHOGARH	S-NPP	23.66944	80.69488	12:46:35	D	7.60

65	VIDESHA	GYARASPUR	S-NPP	23.60280	78.17030	01:36:35	N	1.60
66	VIDESHA	SIRANJ	S-NPP	24.11028	77.66827	12:46:35	D	11.10
67	VIDESHA	VIDESHA	S-NPP	23.46668	77.96690	12:46:35	D	8.90
68	VIDESHA	VIDESHA	S-NPP	23.71056	77.70768	12:46:35	D	23.40
69	VIDESHA	VIDESHA	S-NPP	23.71259	77.70744	12:46:35	D	21.20
70	WEST NIMAR	MAHESHWAR	S-NPP	22.21831	75.86683	14:26:52	D	6.90

The study used data received from following Satellites at NRSC Ground Station

S. No.	Satellite Name	Sensor	Resolution (meter)	Day / Night Passes
1.	Suomi NPP	VIIRS	375 / 750	Both
2.	Terra	MODIS	1000	Both
3.	Aqua	MODIS	1000	Both

**The wheat mask for the Punjab, Haryana and Uttar Pradesh were provided by MNCFC, MoA&FW, Govt of India
The rabi crop mask for Delhi and Madhya Pradesh were provided by NRSC**

Study Team

ICAR – HQ	Dr S.N. Jha	DDG (AG. ENGG.)	ddgengg@icar.org.in
	Dr Rajbir Singh	ADG (NRM)	rajbirsingh.zpd@gmail.com
ICAR - IARI	Dr V.K. Sehgal	Pr. Scientist & Nodal Officer	iaricreams@gmail.com
	Dr Rajkumar Dhakar	Scientist	raidhakar.iari@gmail.com
	Mr Mohd Jahangir	Lab Assistant (KRISHI)	mjahangir198@gmail.com
ICAR - ATARI	Dr Parvender Sheoran	Director ATARI (Zone-I) Ludhiana	zcu1ldh@gmail.com
	Dr. J.P. Mishra	Director ATARI (Zone-II) Jodhpur	jp.mishra67@gov.in
		Director ATARI (Zone-III) Kanpur	zpdicarkanpur@gmail.com
ICAR - IASRI	Dr Rajender Parsad	Director	rajender.parsad@icar.gov.in

GIS Maps of fire events can be visualized online on ICAR KRISHI Geoportal website: <http://geoportal.icar.gov.in:8080/geoexplorer/composer/>
(Part of KRISHI Portal: <https://krishi.icar.gov.in> initiative)
