

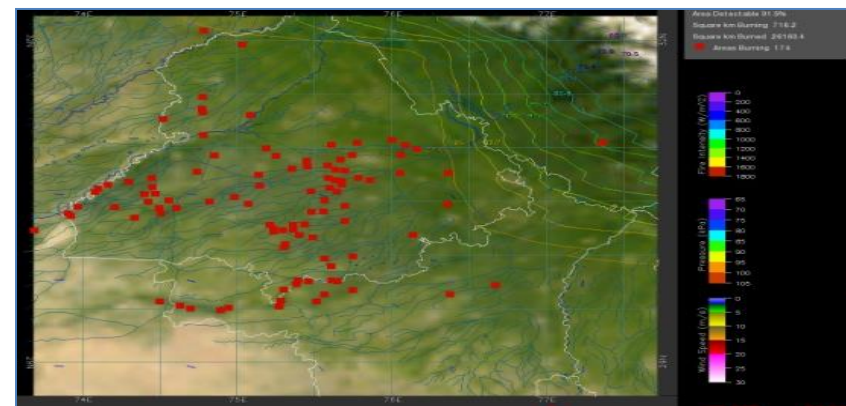
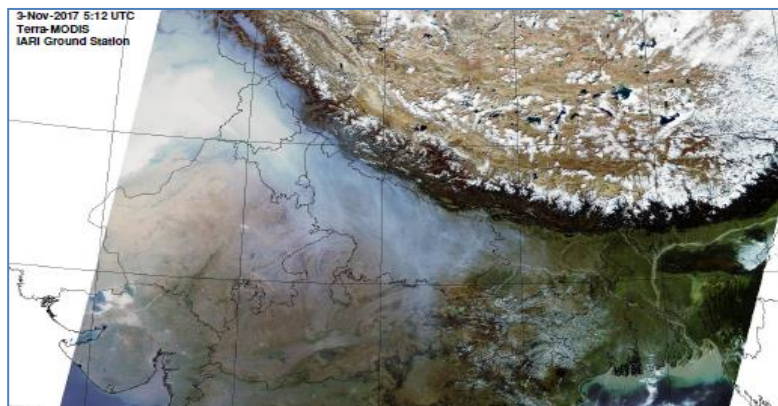


MONITORING PADDY RESIDUE BURNING IN INDIA USING SATELLITE REMOTE SENSING DURING 2023

Bulletin
No. 41

Events Date:
25-Oct-2023

Issued on:
25-Oct-2023



Consortium for Research on Agroecosystem Monitoring and Modeling from Space (CREAMS) Laboratory,
Division of Agricultural Physics, ICAR – Indian Agricultural Research Institute, New Delhi – 110012

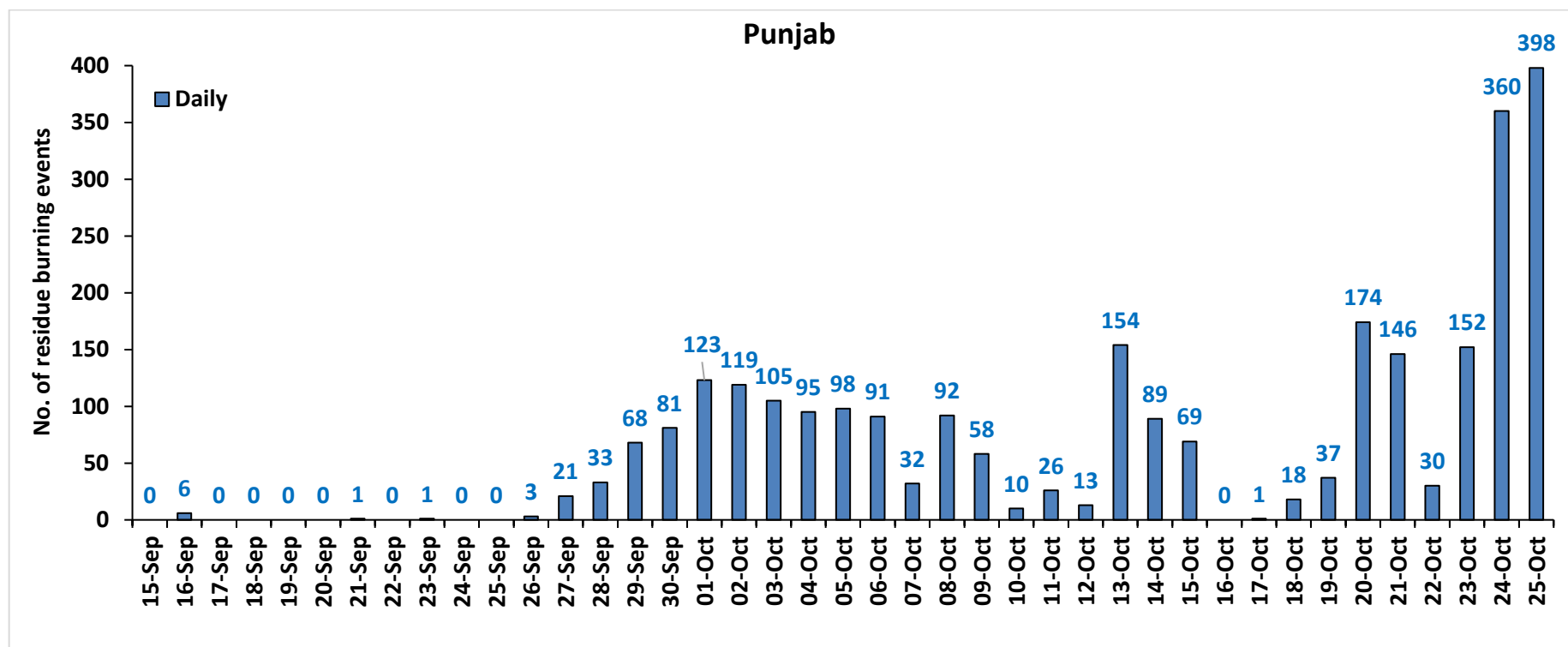
<http://creams.iari.res.in>



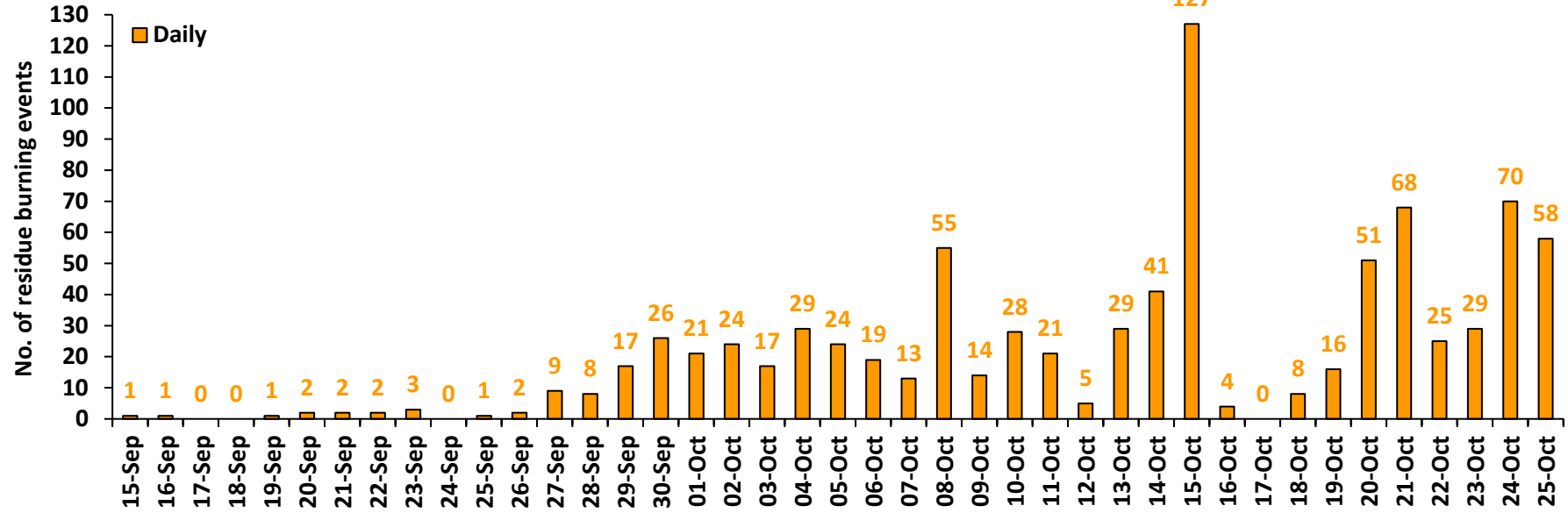
Highlights for 25-Oct-2023

- The active fire events due to rice residue burning were monitored using satellite remote sensing, following the "Standard Protocol for Estimation of Crop Residue Burning Fire Events using Satellite Data".
- Satellites detected **692** residue burning events in the six study States on 25-Oct-2023.
- The state wise events detected on 25-Oct-2023 were **398** in Punjab, **58** in Haryana, **30** in UP, **00** in Delhi, **47** in Rajasthan and **159** in MP.
- Total **6023** burning events were detected in the six states between 15-Sept-2023 and 25-Oct-2023, which are distributed as **2704**, **871**, **628**, **02**, **557** and **1261** in Punjab, Haryana, UP, Delhi, Rajasthan and MP, respectively.

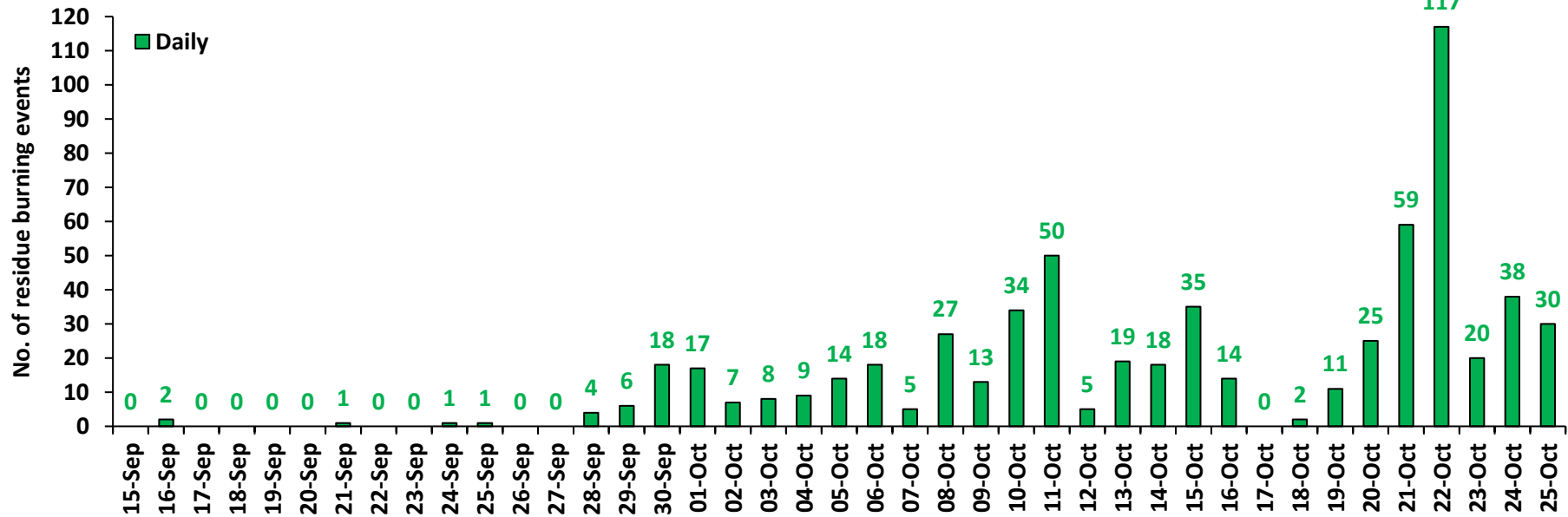
Temporal distribution of rice residue burning events for the study States in 2023



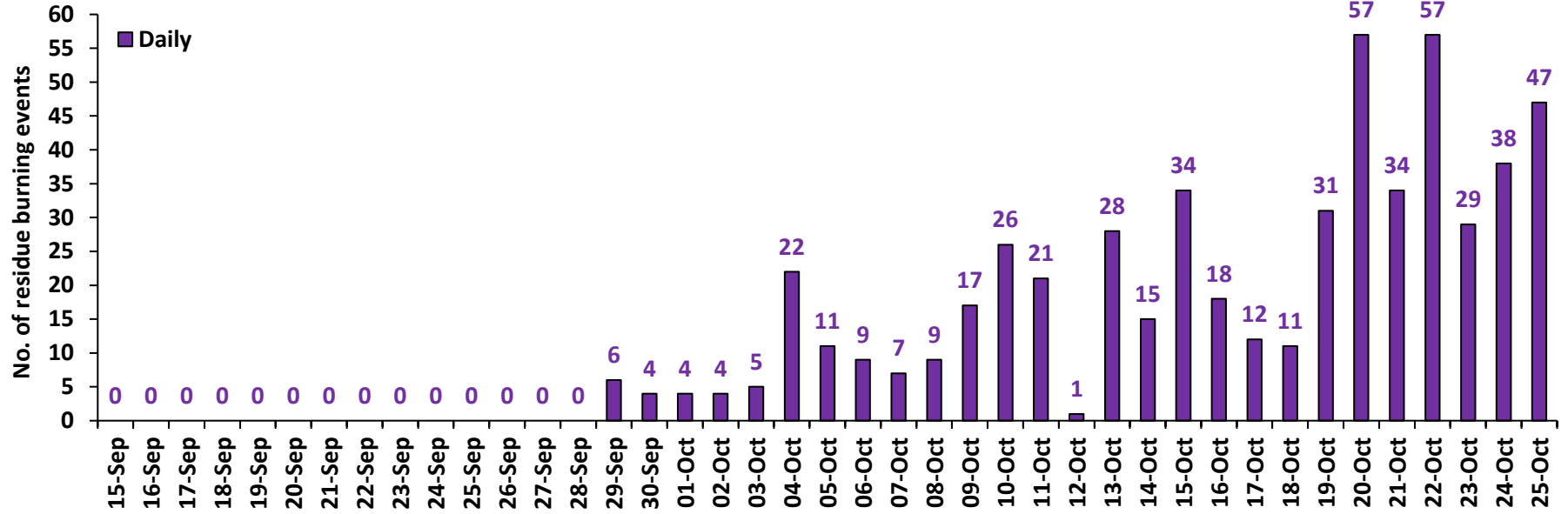
Haryana



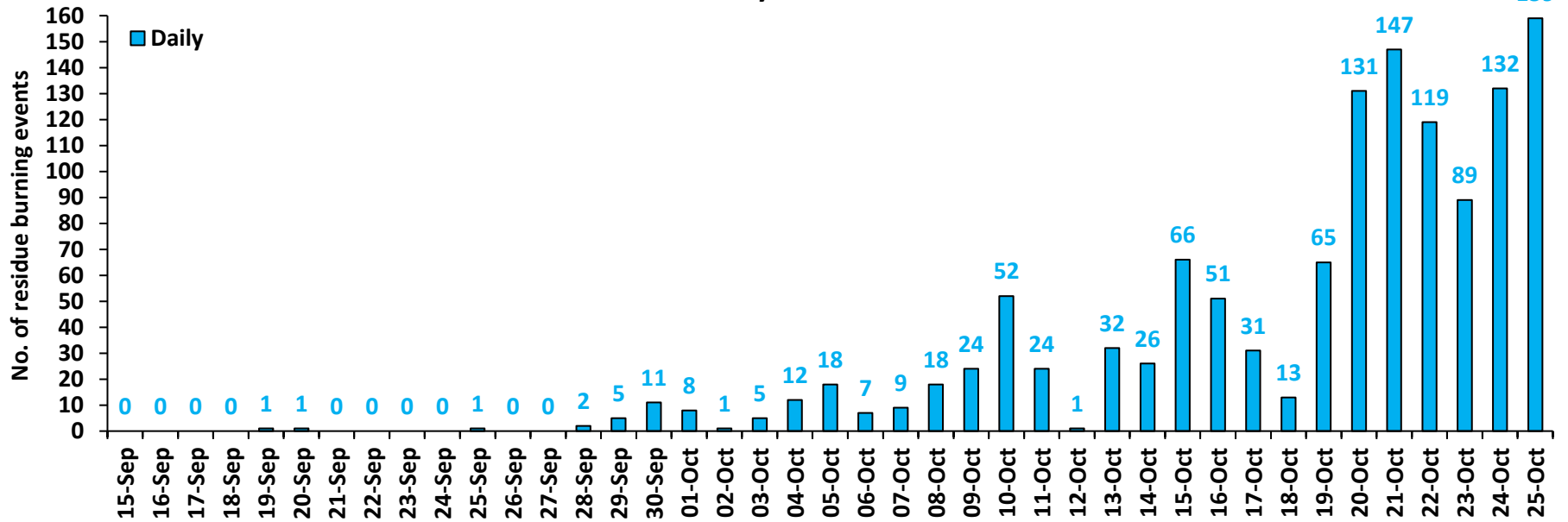
Uttar Pradesh



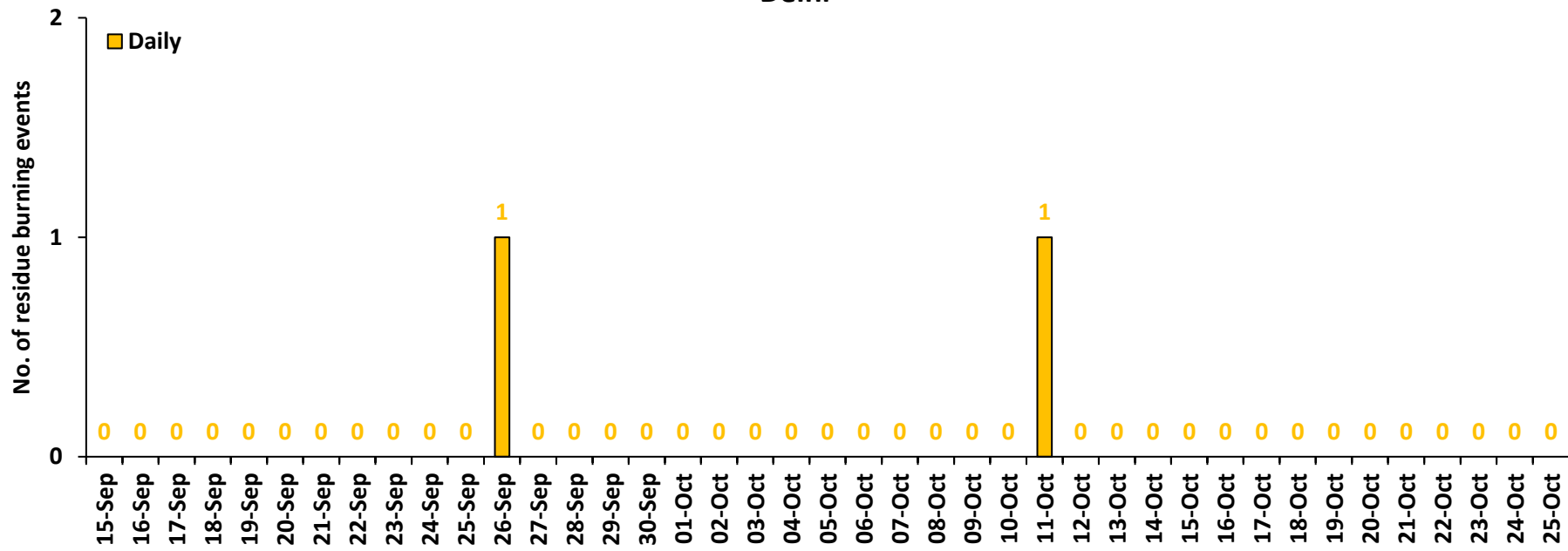
Rajasthan



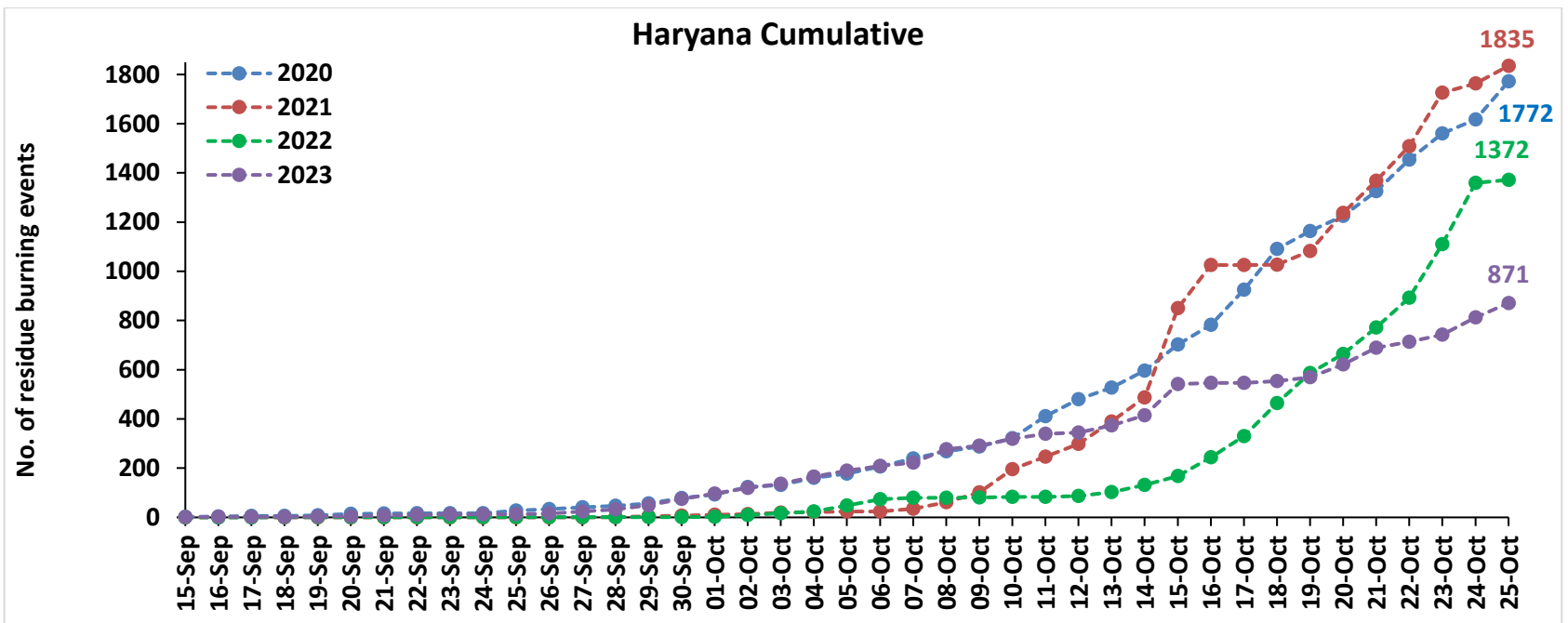
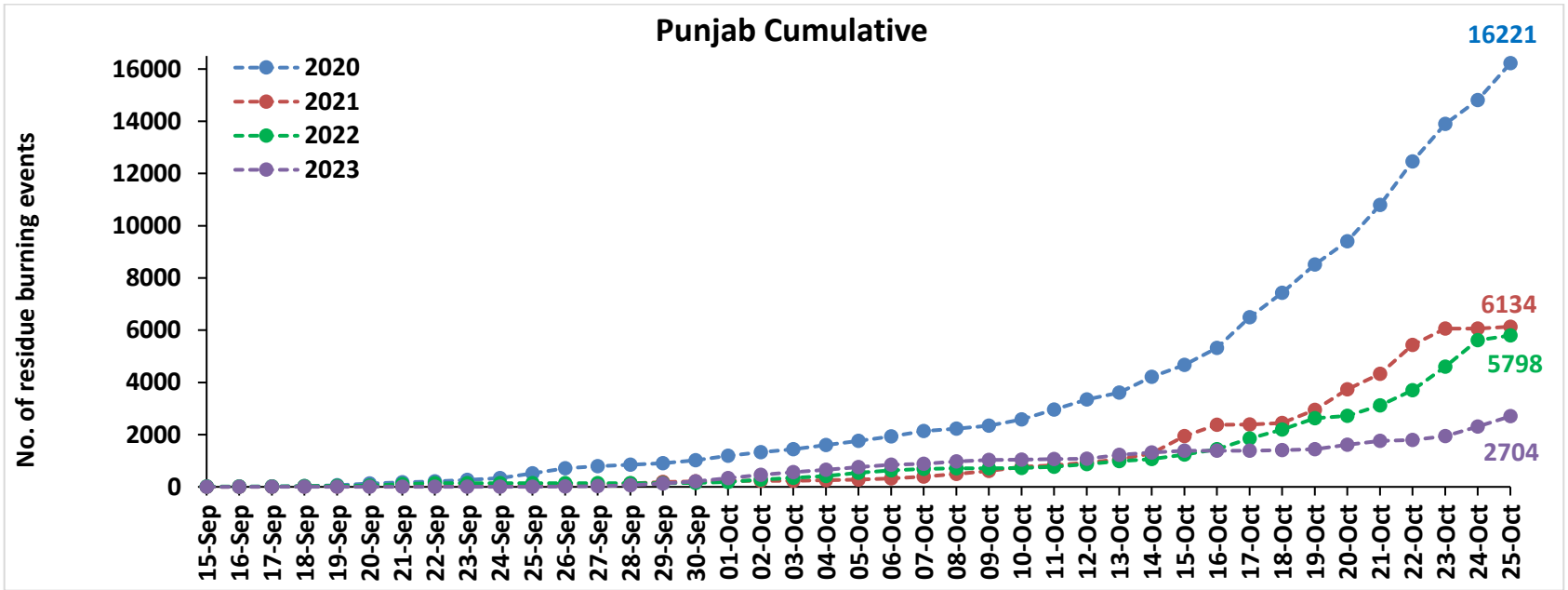
Madhya Pradesh

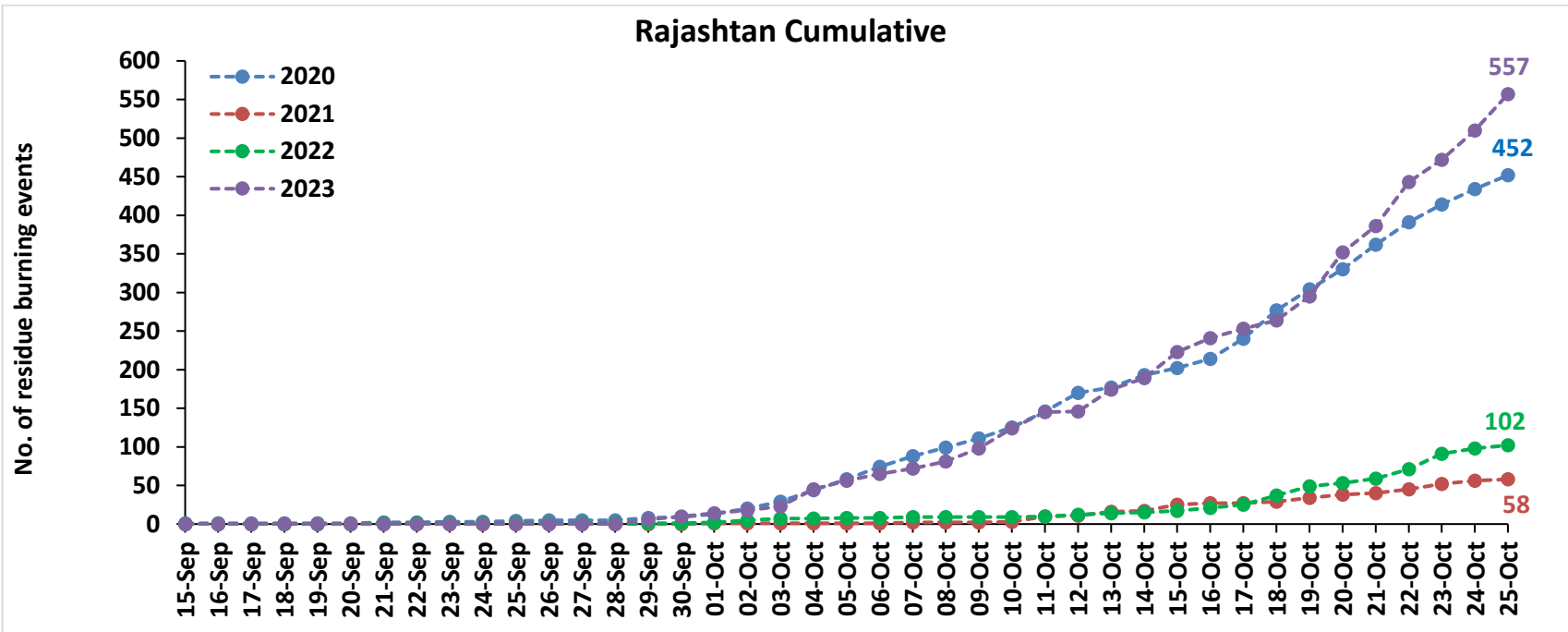
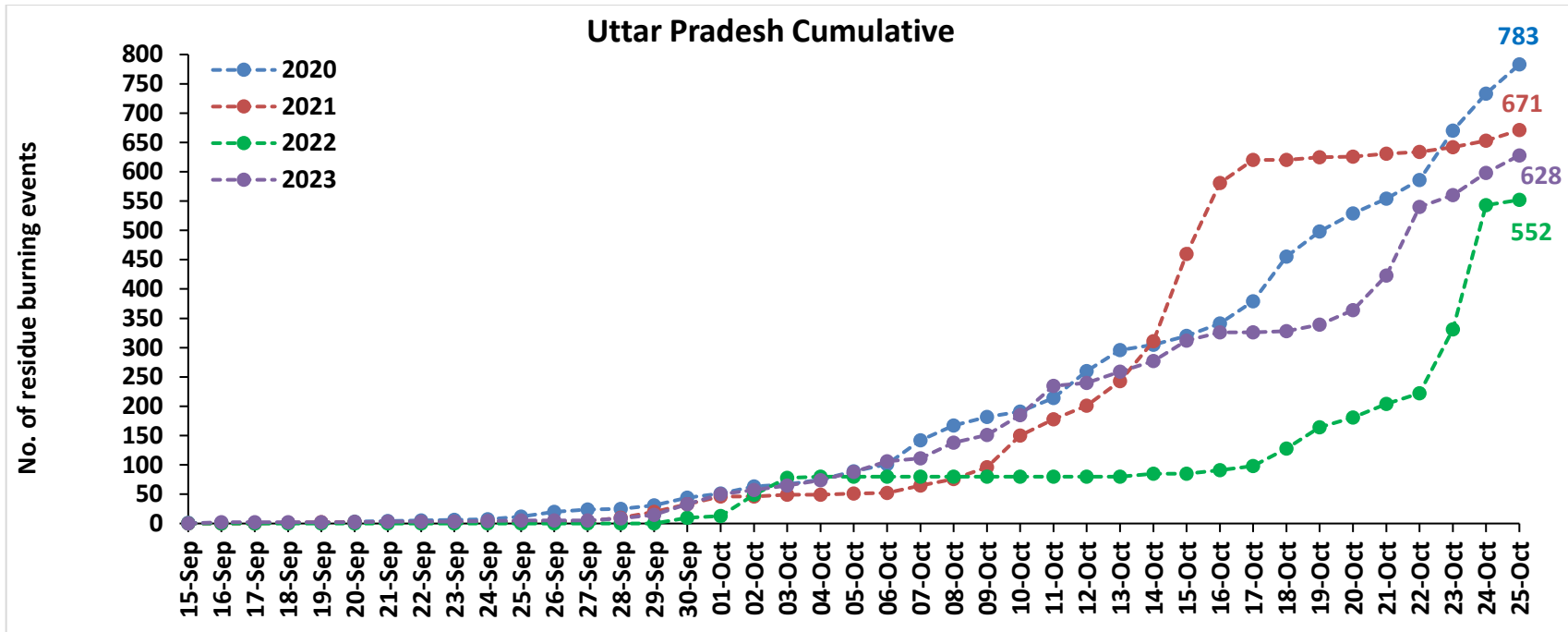


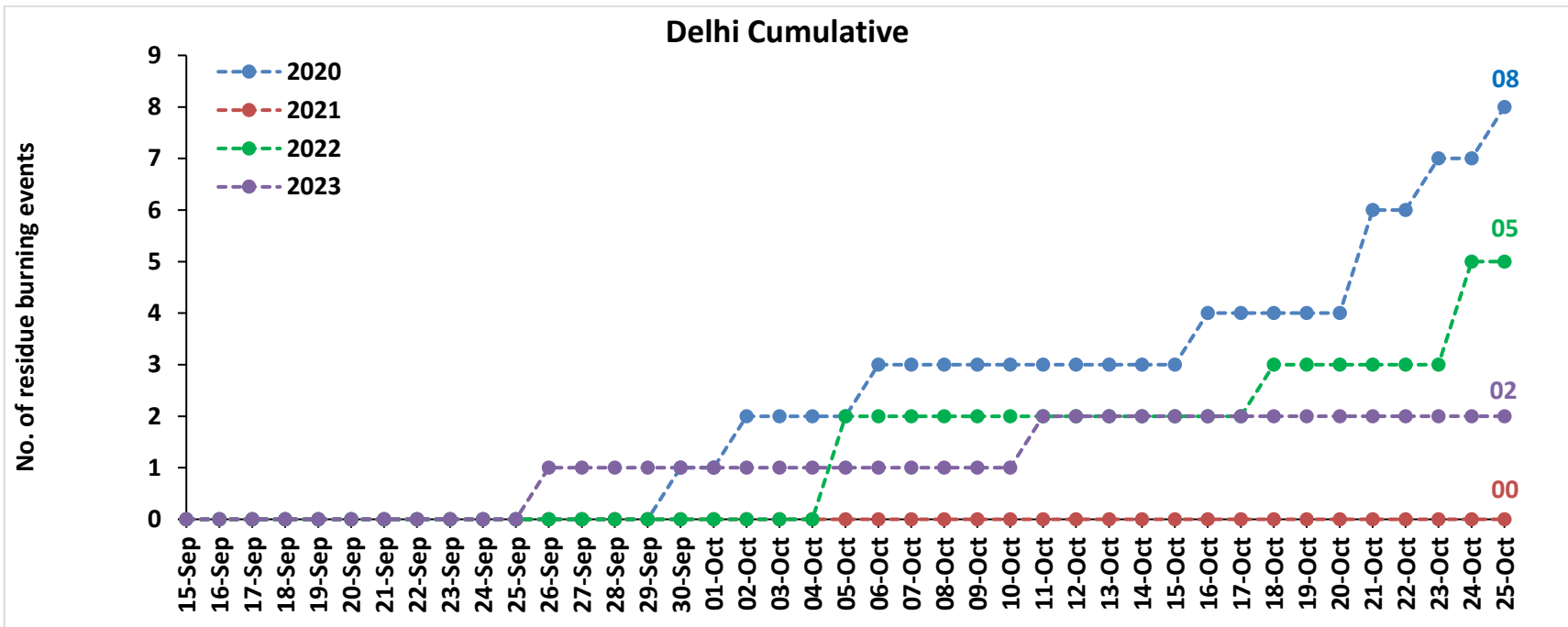
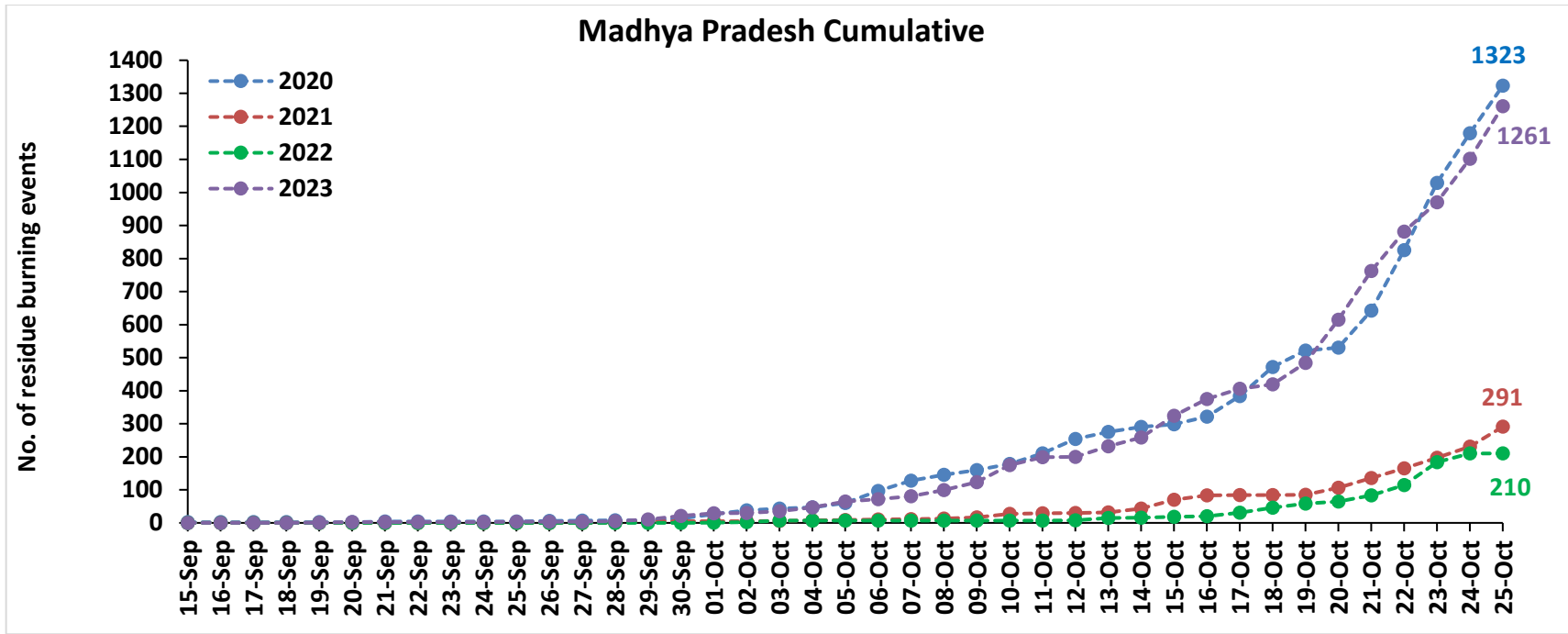
Delhi



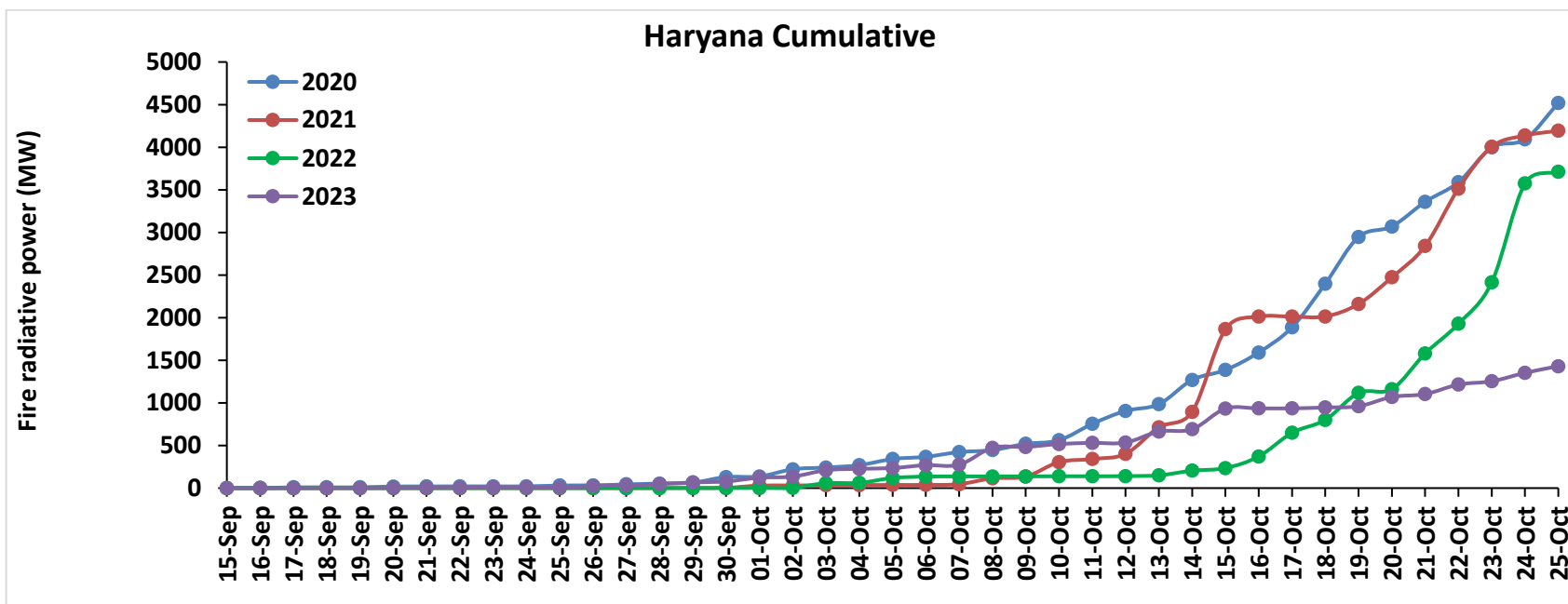
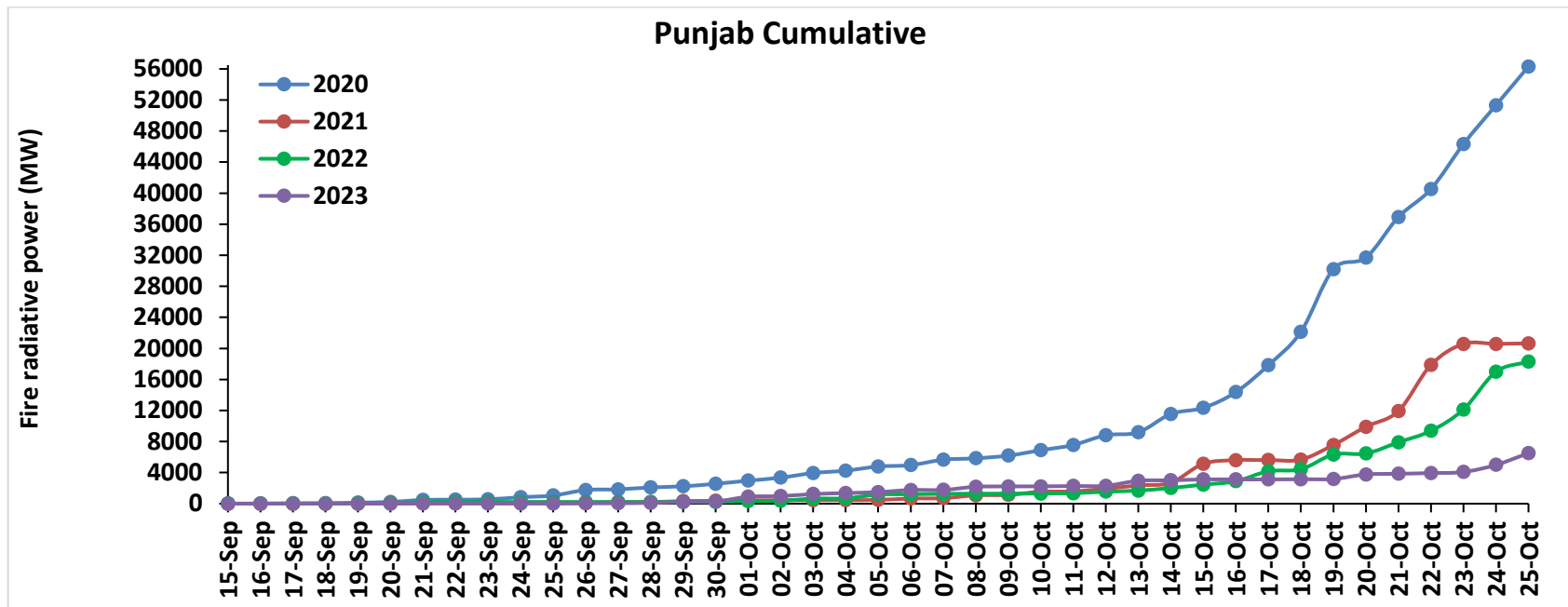
Comparison of residue burning events in current year (2023) with previous years (2020, 2021 and 2022) for the study State

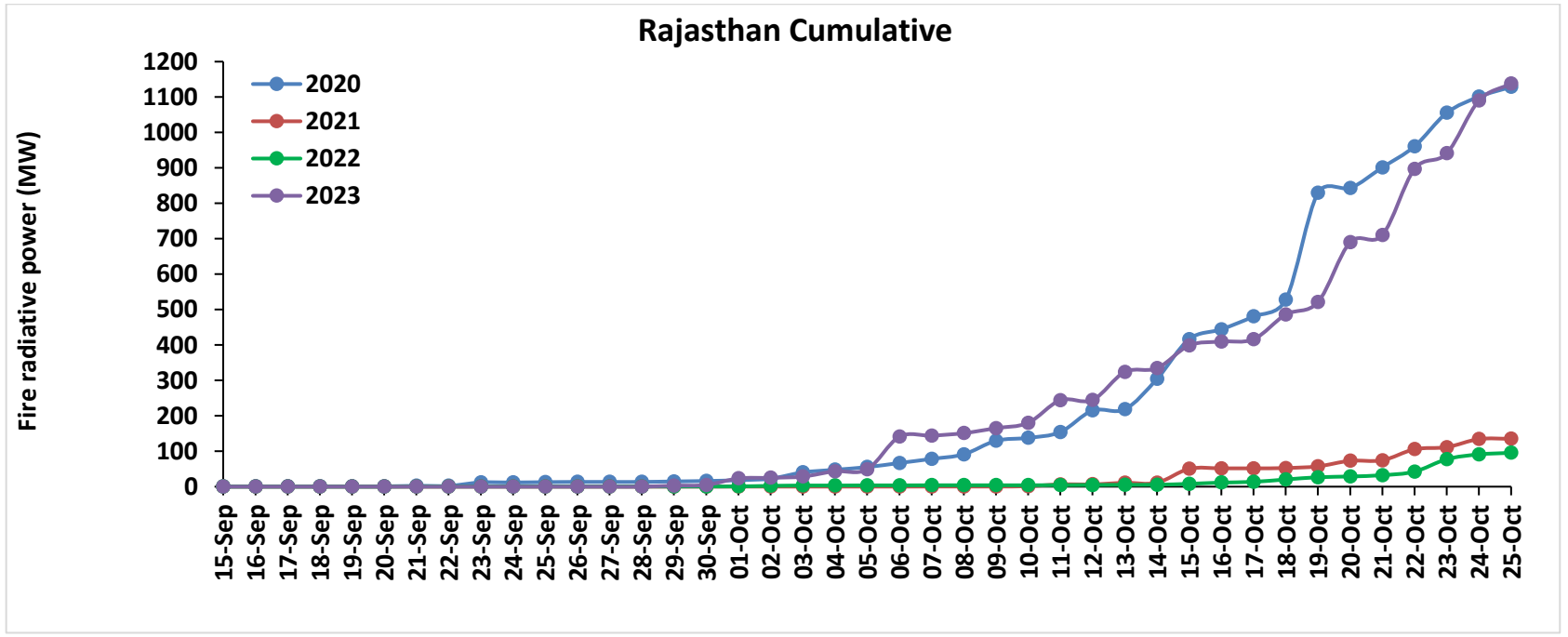
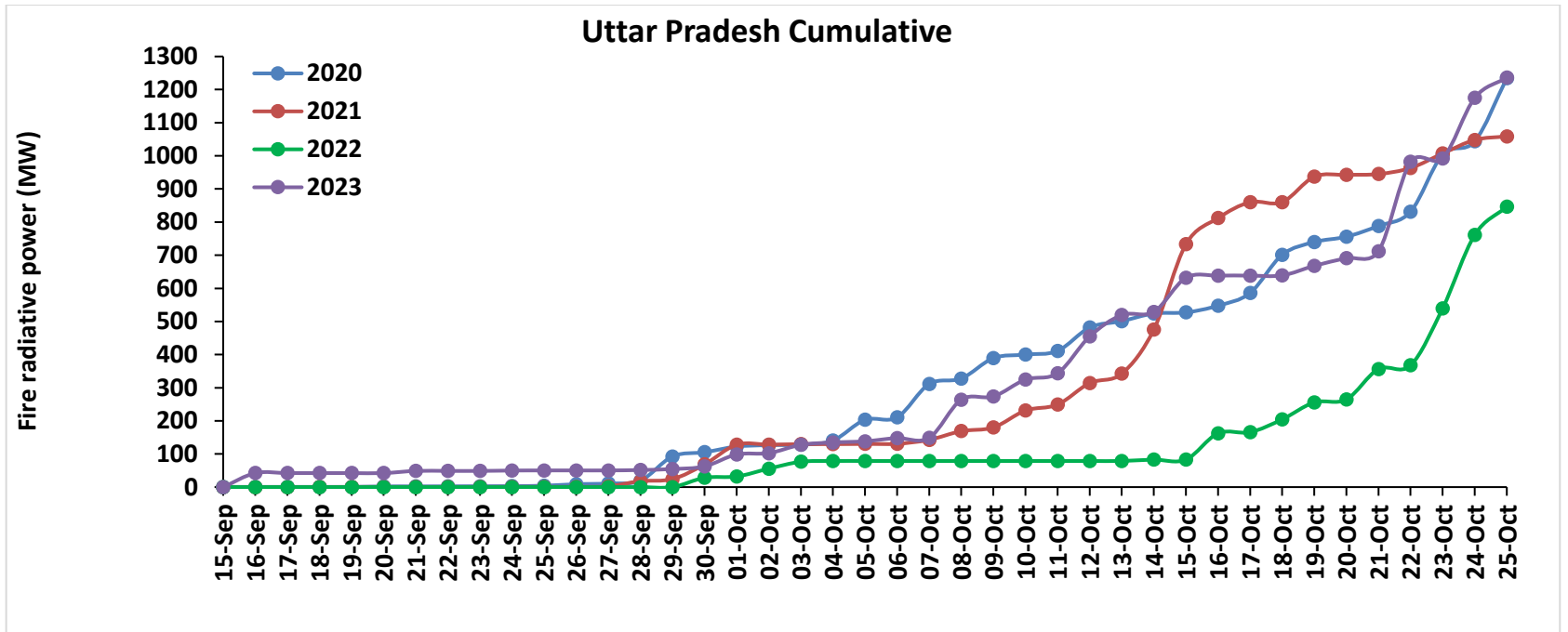


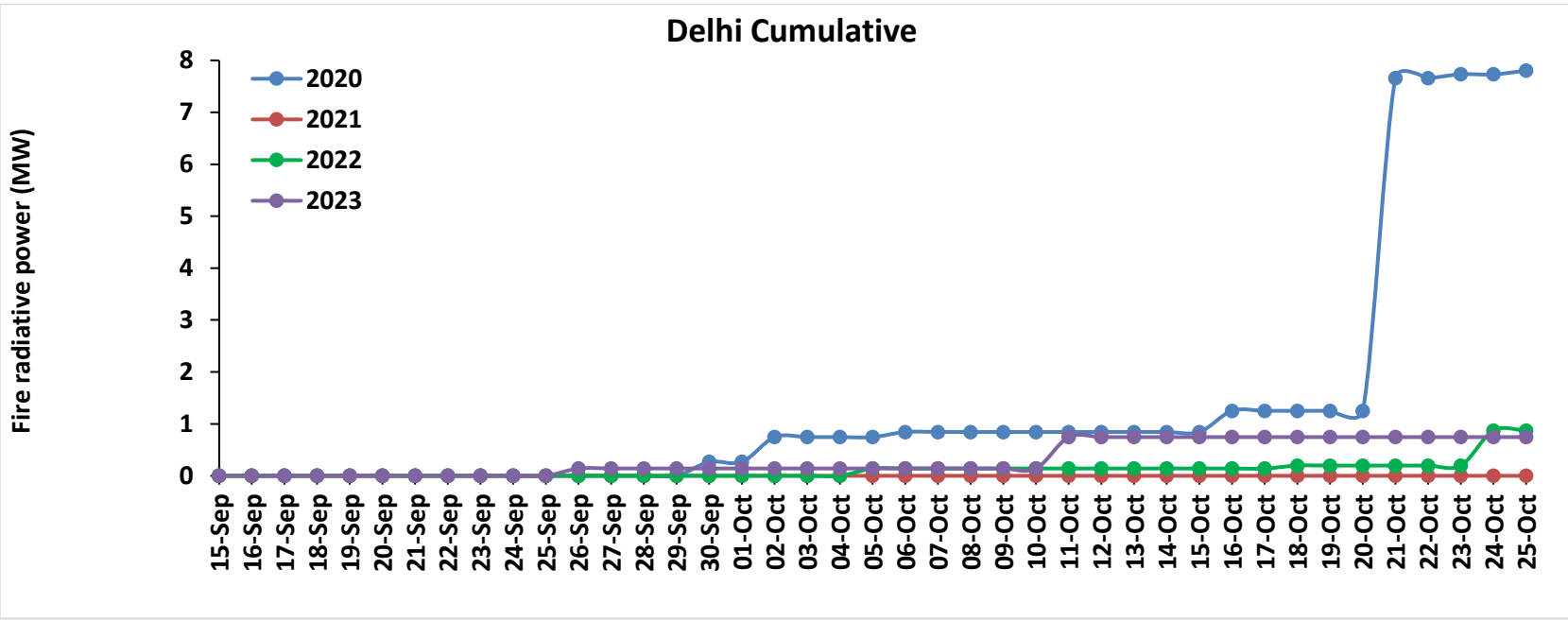
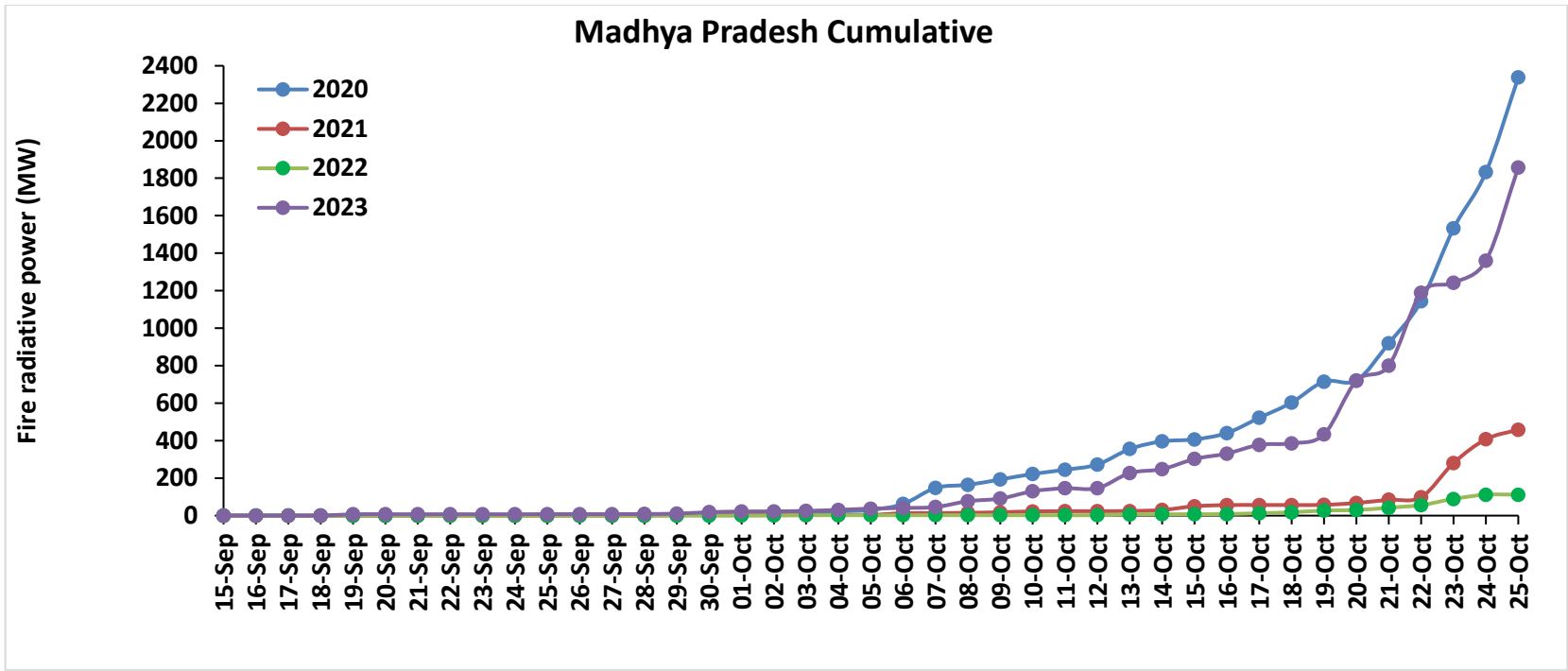




Comparison of residue burning fire power in current year (2023) with previous years (2020, 2021 and 2022) for the study States

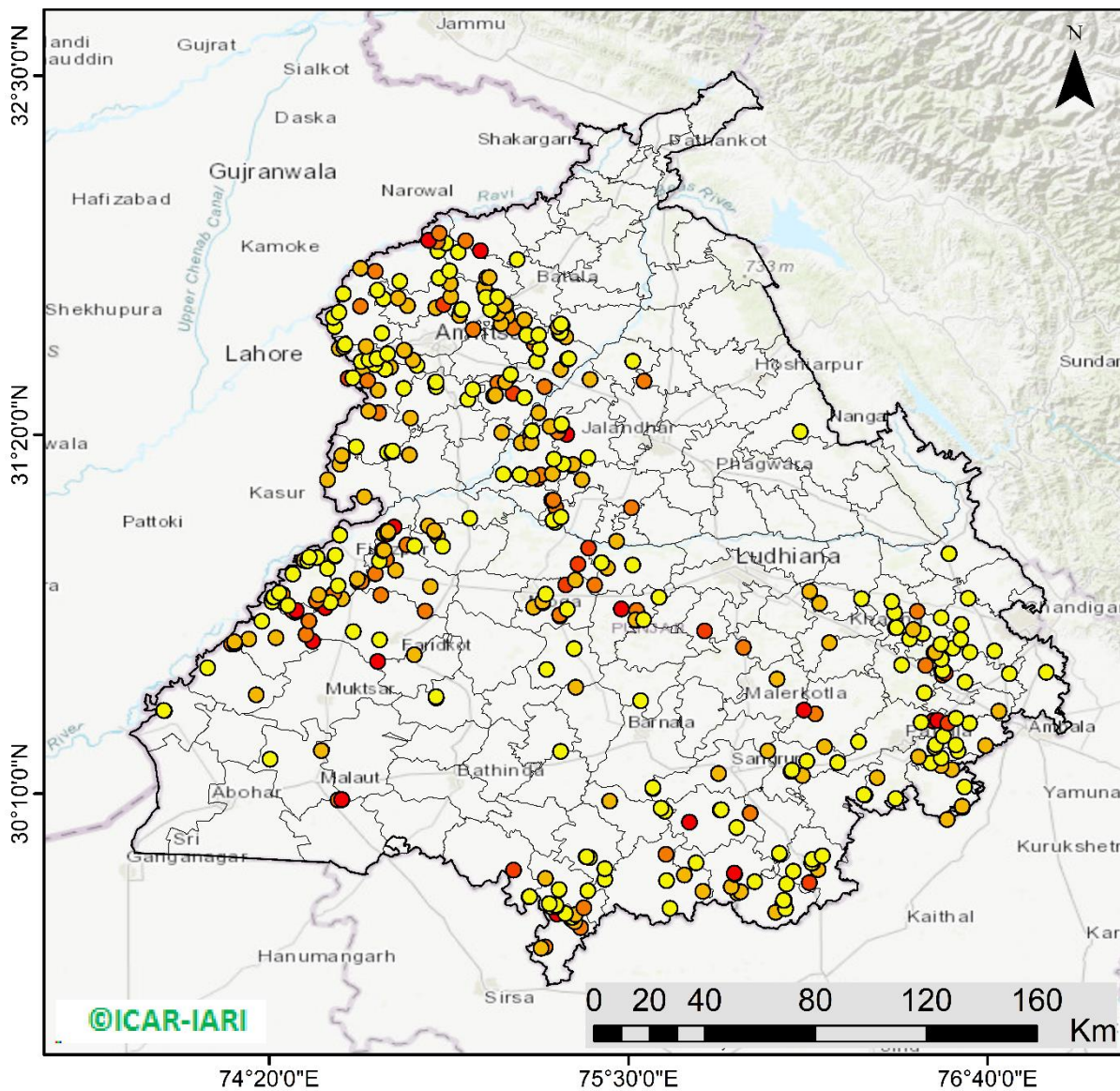






Punjab

RICE RESIDUE BURNING IN PUNJAB



398 burning events detected in Punjab during (25th Oct 2023)

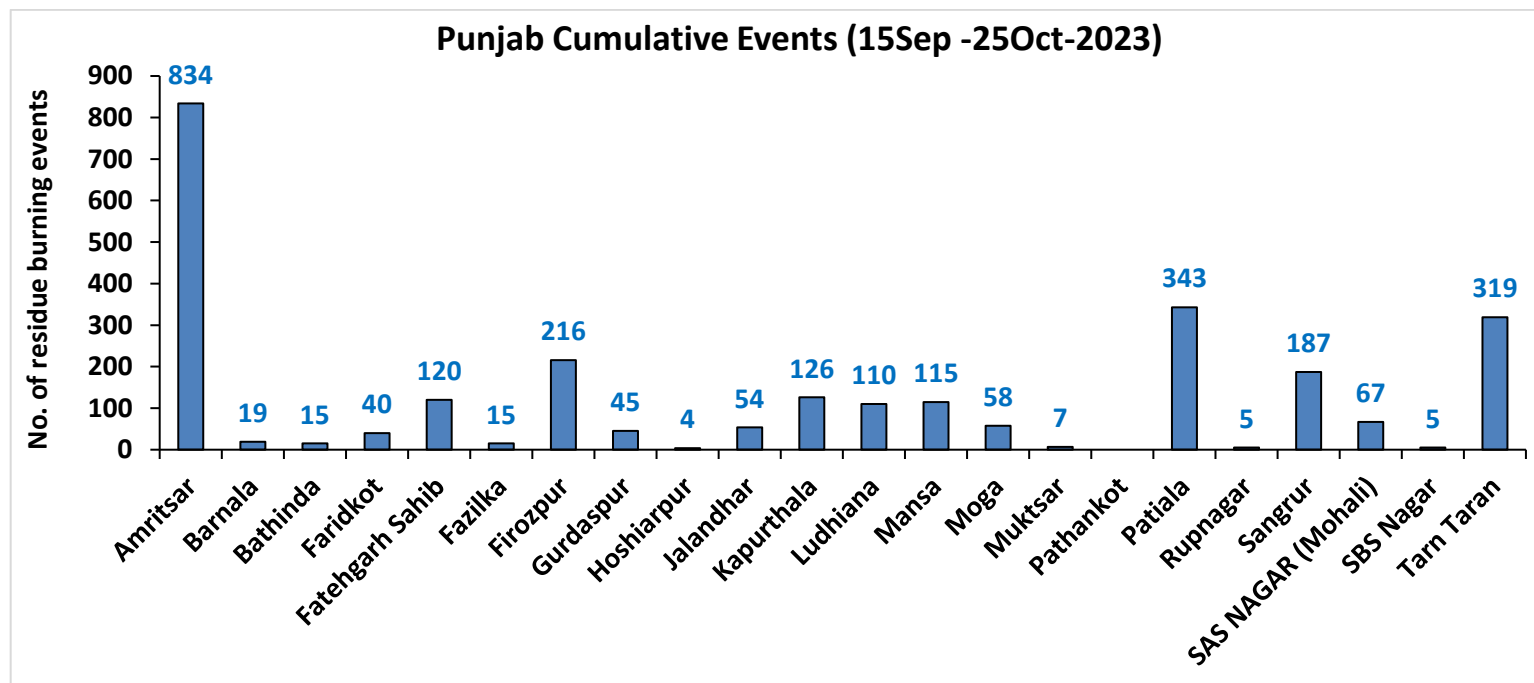
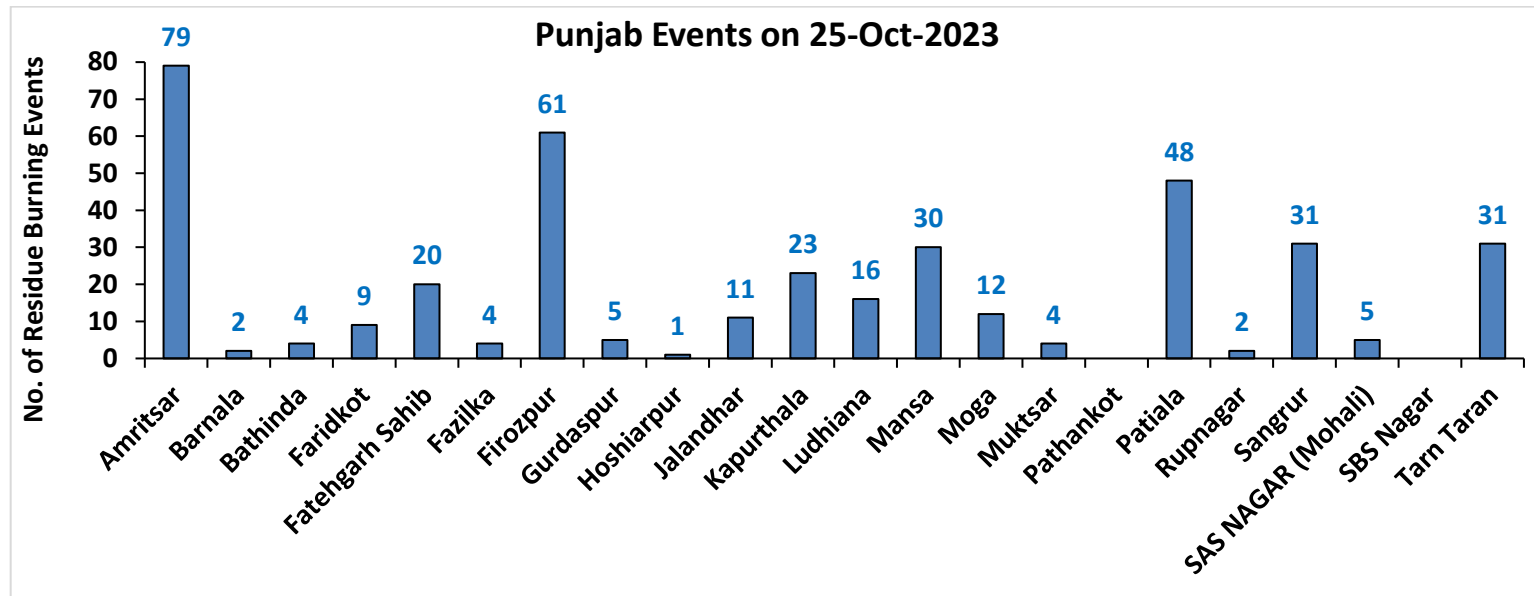
Fire Intensity (W/m²)

- 0 - 5
- 6 - 10
- 11 - 15
- 16 - 20
- >20



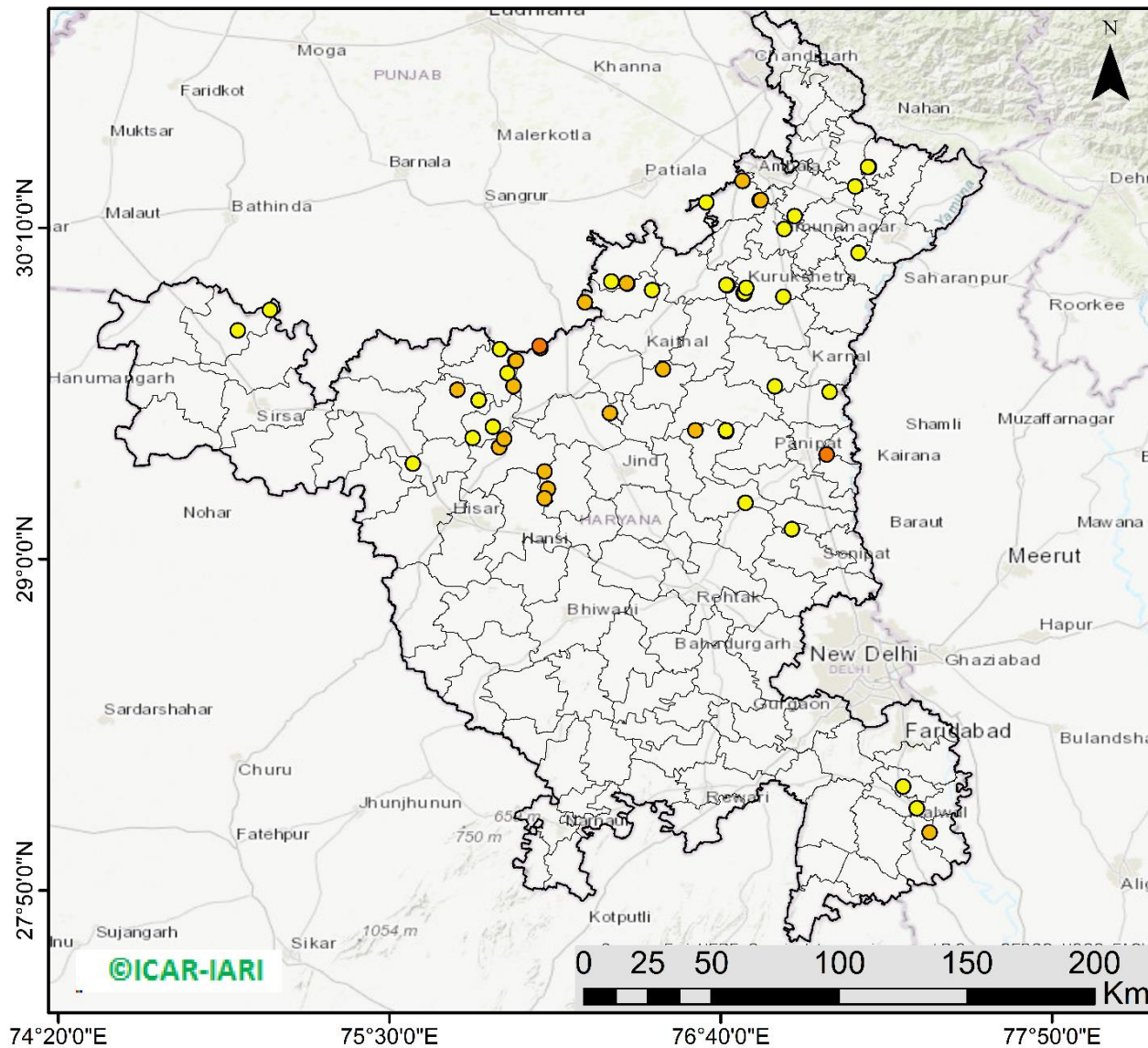
<http://geoportal.icar.gov.in:8080/geoexplorer/composer/>

District-wise cumulative number of residues burning events in Punjab (15Sep- 25Oct-2023)



Haryana

RICE RESIDUE BURNING IN HARYANA



58 burning events detected in Haryana on (25th Oct 2023)

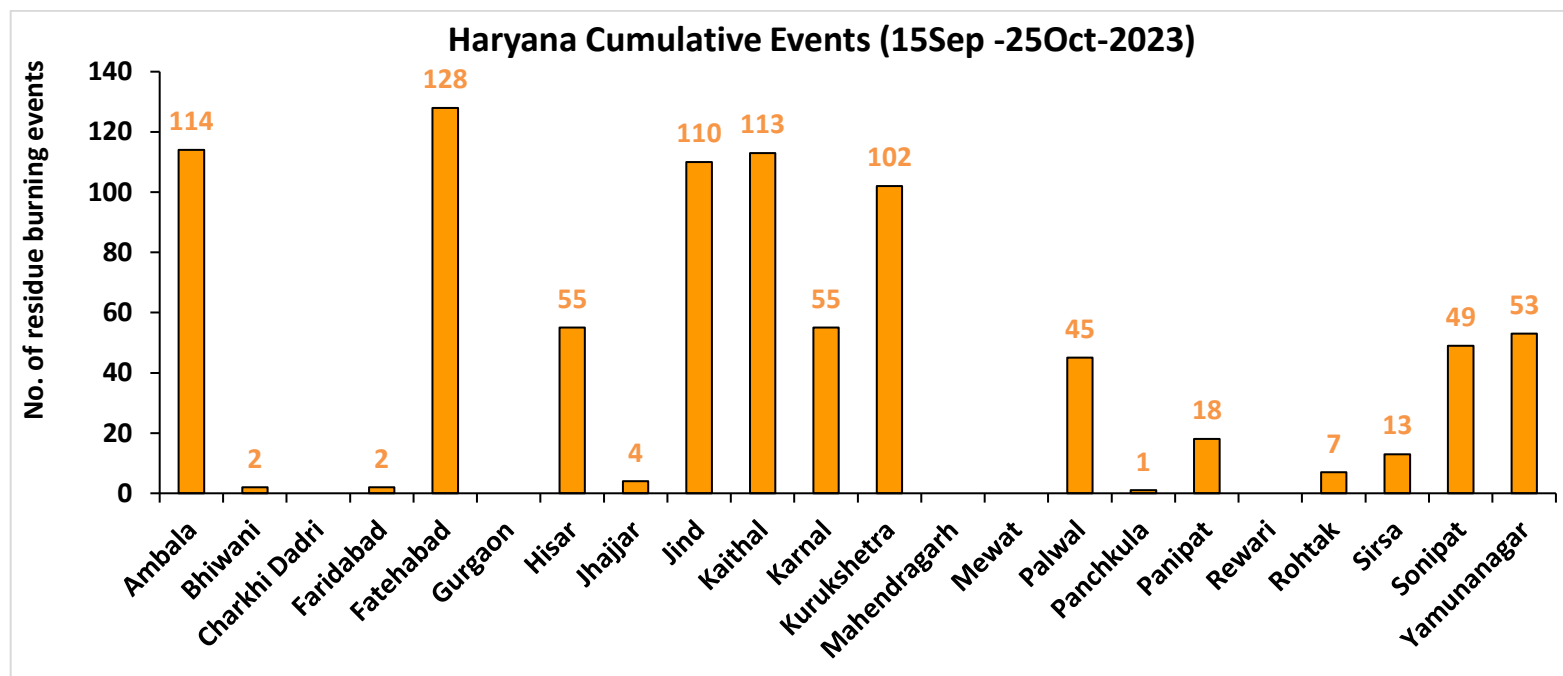
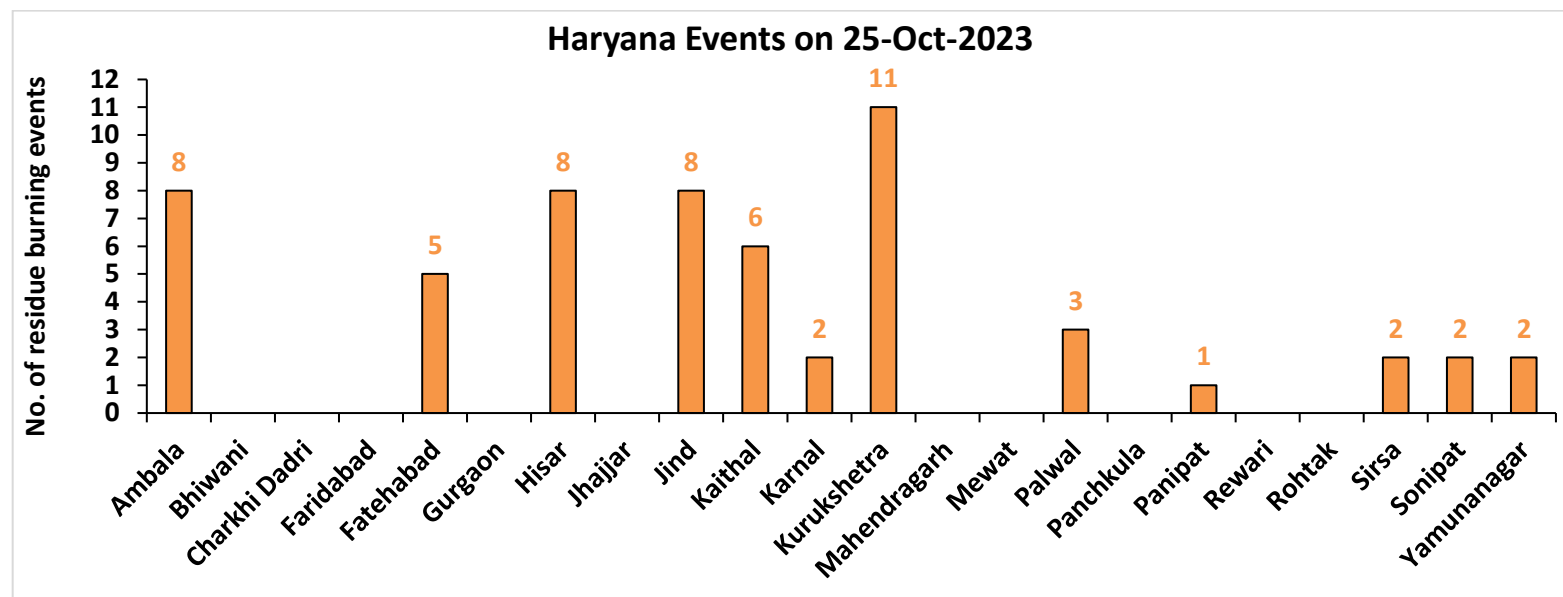
Fire Intensity (W/m²)

- 0 - 5
- 6 - 10
- 11 - 15
- 16 - 20
- >20



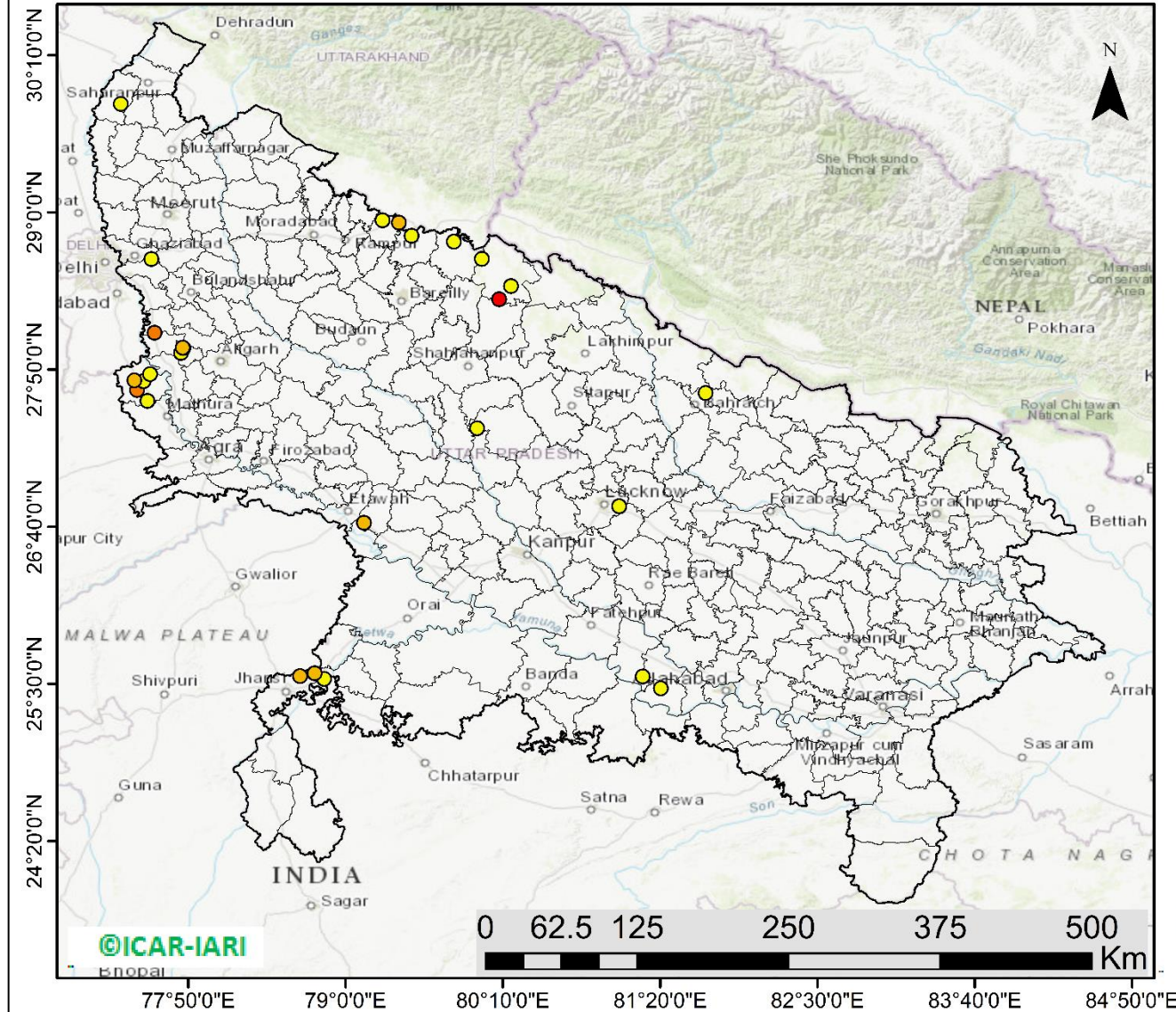
<http://geoportal.icar.gov.in:8080/geoexplorer/composer/>

District-wise cumulative number of residues burning events in Haryana (15Sep-25Oct -2023)



Uttar Pradesh

RICE RESIDUE BURNING IN UTTAR PRADESH



30 burning events detected in Uttar Pradesh on (25th Oct 2023)

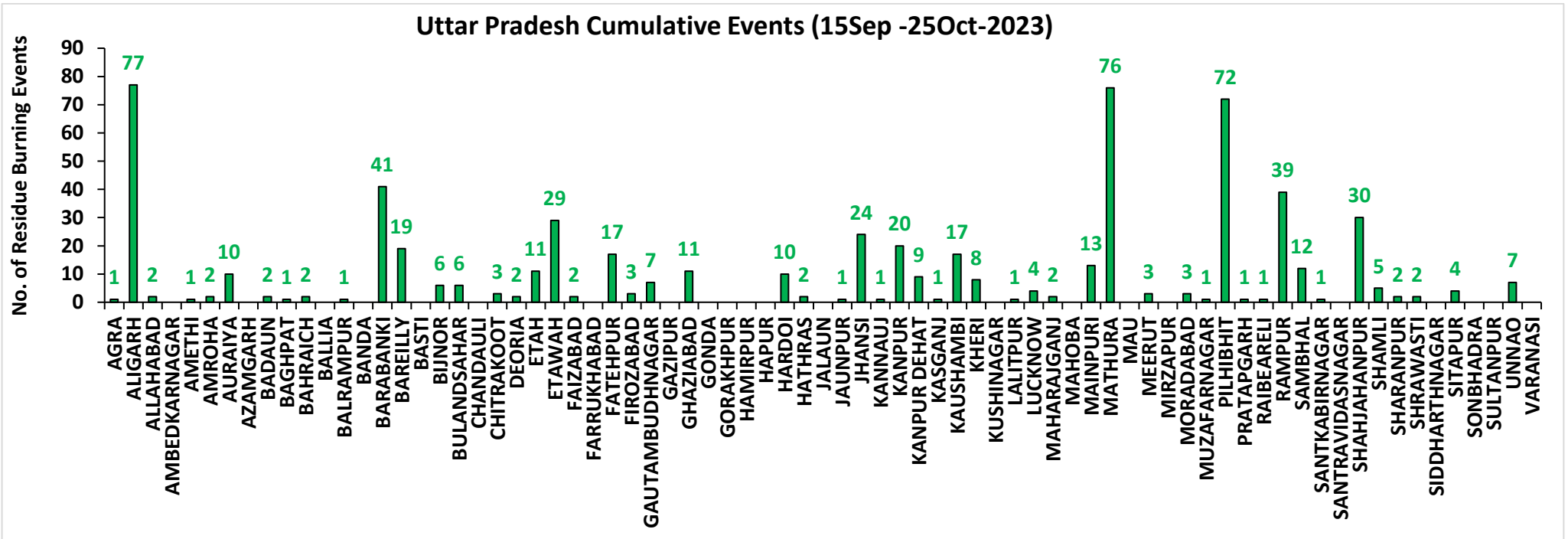
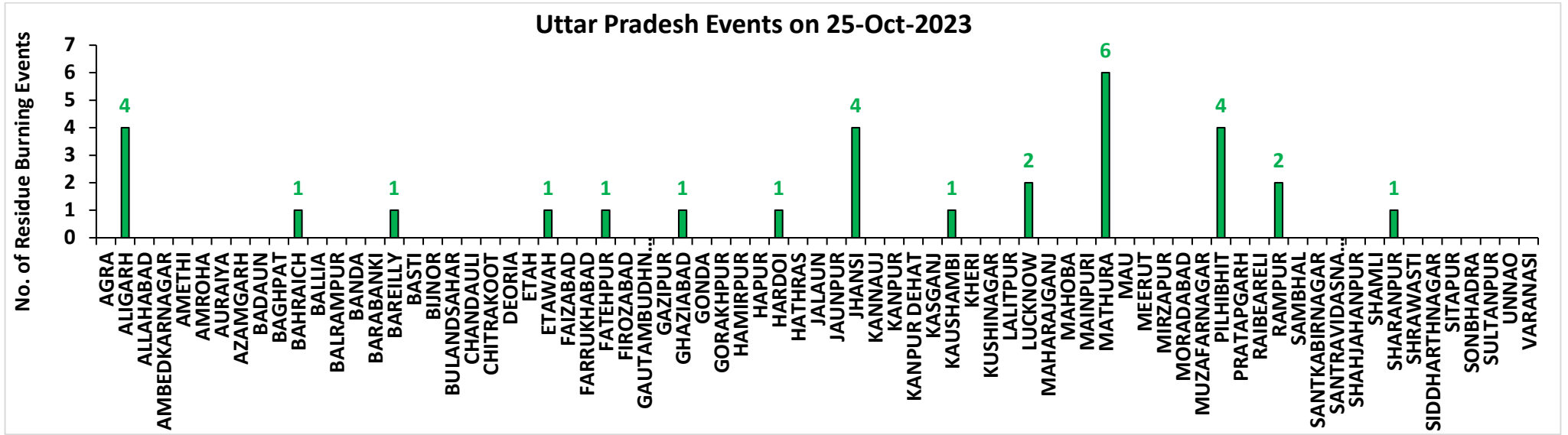
Fire Intensity (W/m²)

- 0 - 5
- 6 - 10
- 11 - 15
- 16 - 20
- >20



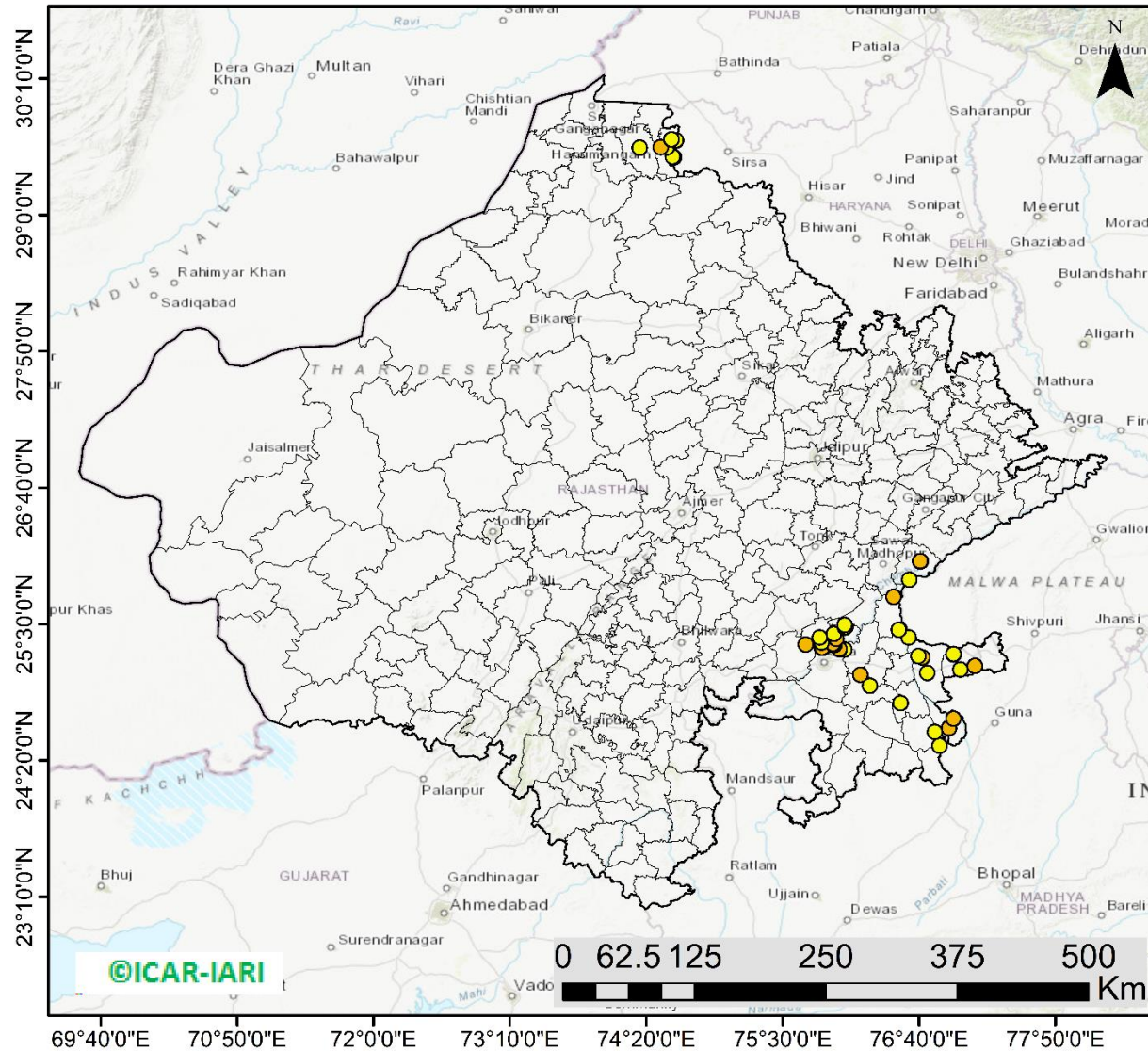
<http://geoportal.icar.gov.in:8080/geoexplorer/composer/>

District-wise cumulative number of residues burning events in Uttar Pradesh (15Sep-25Oct -2023)



Rajasthan

RICE RESIDUE BURNING IN RAJASTHAN



47 burning events
detected in Rajasthan on
(25th Oct 2023)

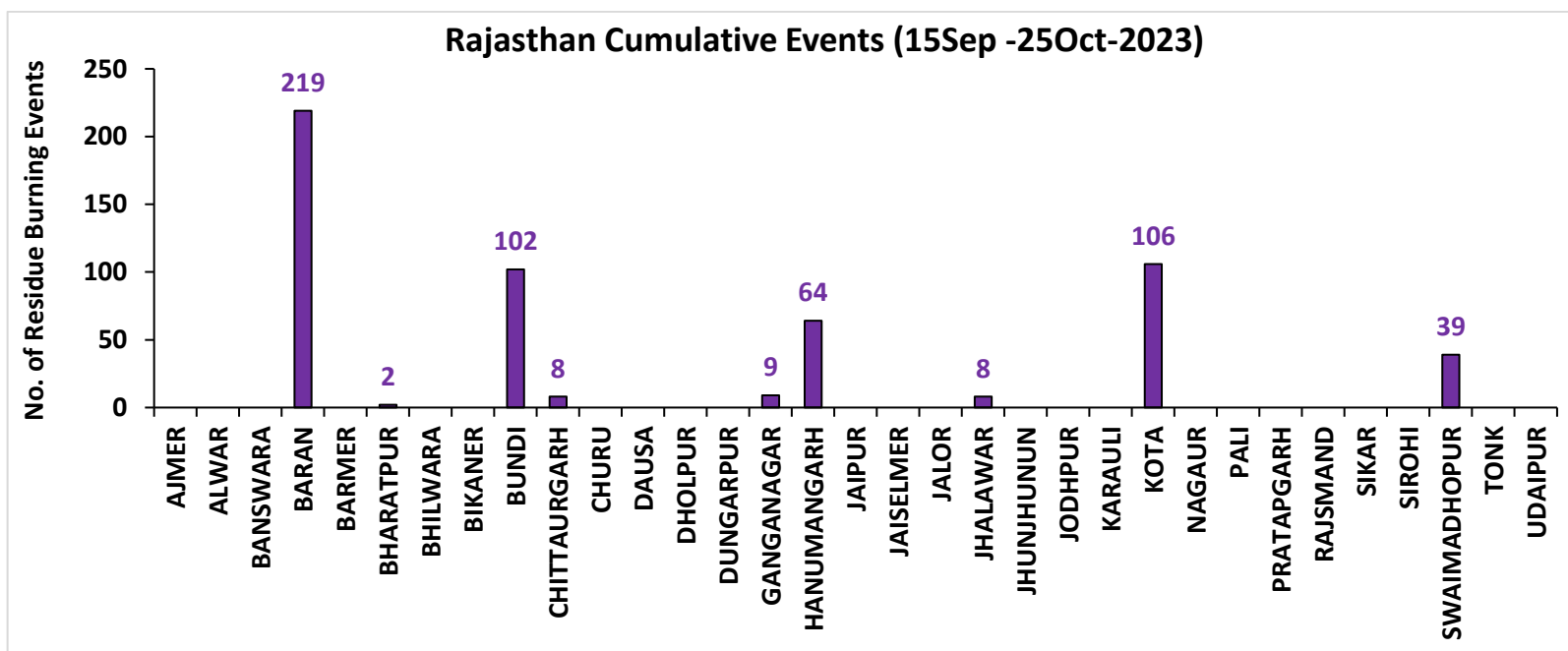
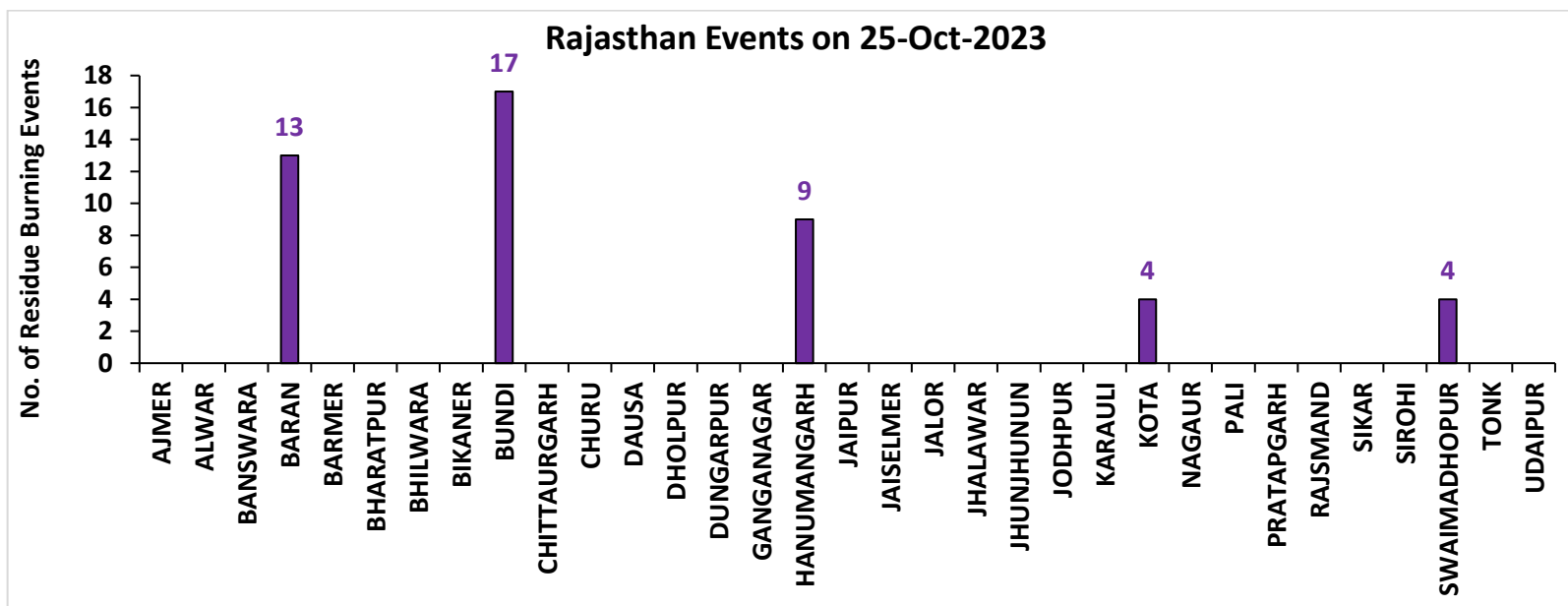
Fire Intensity (W/m²)

- 0 - 5
- 6 - 10
- 11 - 15
- 16 - 20
- >20



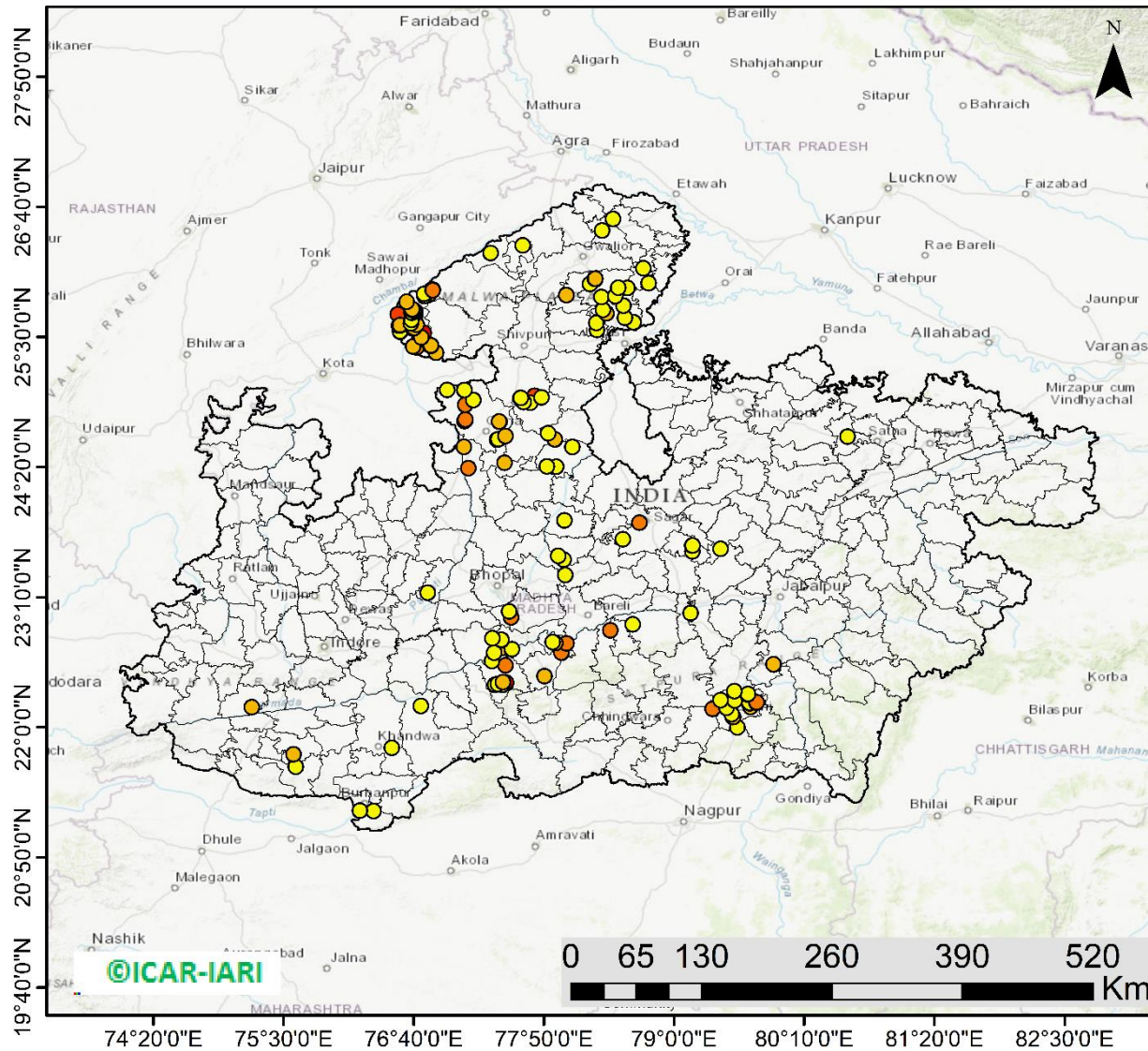
<http://geoportal.icar.gov.in:8080/geoexplorer/composer/>

District-wise cumulative number of residues burning events in Rajasthan (15Sep-25Oct -2023)



Madhya Pradesh

RICE RESIDUE BURNING IN MADHYA PRADESH



159 burning events
detected in MP on
(25th Oct 2023)

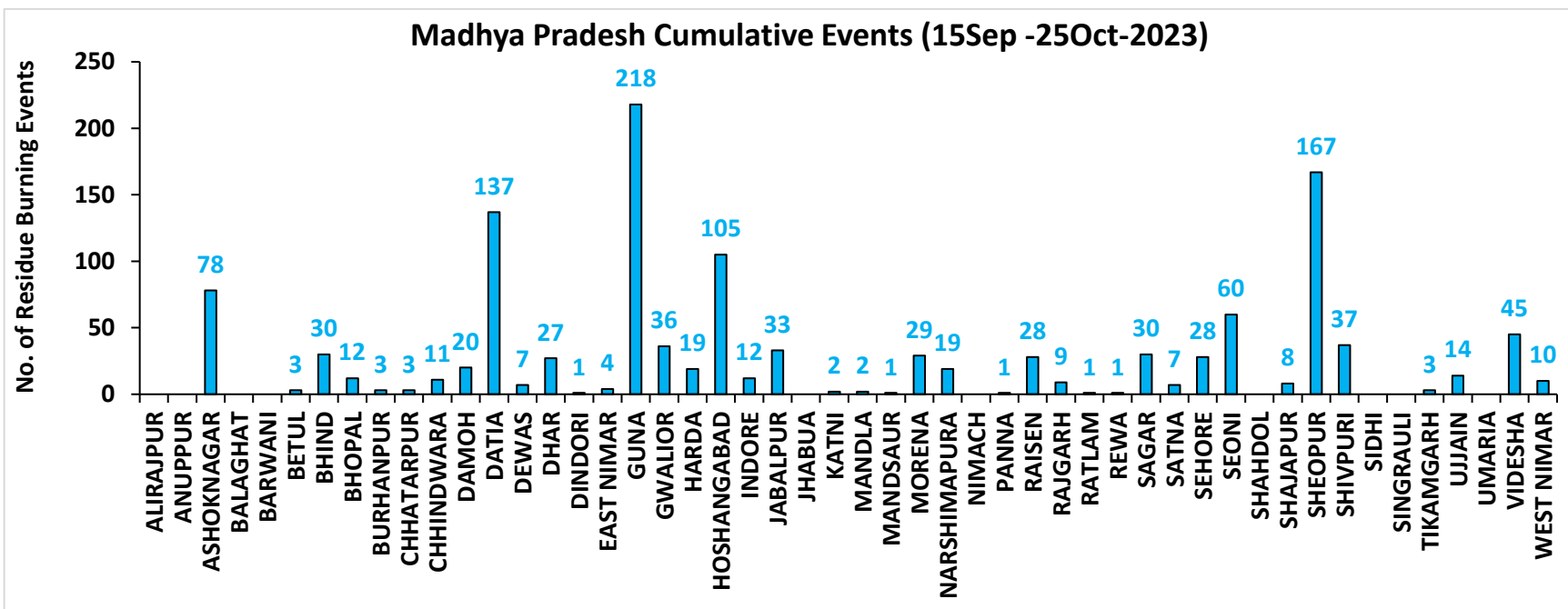
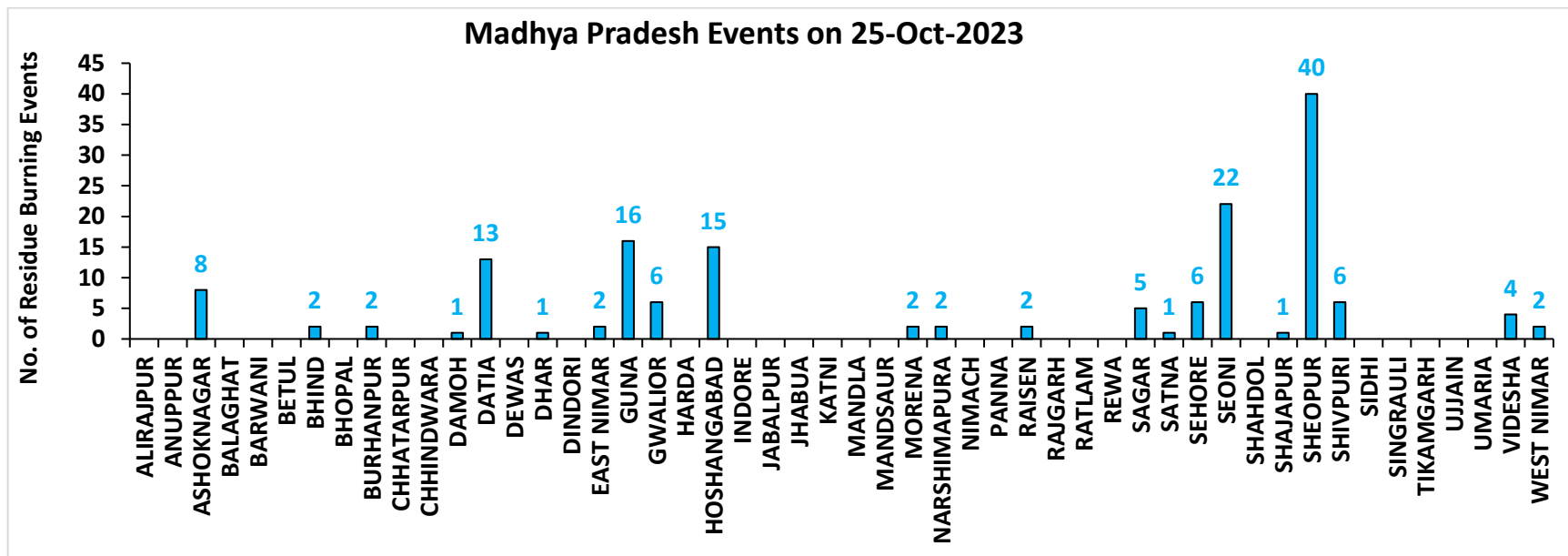
Fire Intensity (W/m²)

- 0 - 5
- 6 - 10
- 11 - 15
- 16 - 20
- >20



<http://geoportal.icar.gov.in:8080/geoexplorer/composer/>

District-wise cumulative number of residues burning events in Madhya Pradesh (15Sep-25Oct -2023)



District-wise cumulative number of residues burning events detected in 2020, 2021, 2022 and 2023
(Period: 15 September-25 October)

(a) Punjab

District	15 Sep-25 Oct			
	2020	2021	2022	2023
Amritsar	2367	947	1085	834
Barnala	100	47	39	19
Bathinda	225	75	90	15
Faridkot	844	301	54	40
Fatehgarh Sahib	536	286	234	120
Fazilka	246	86	52	15
Firozpur	2125	399	305	216
Gurdaspur	1295	394	577	45
Hoshiarpur	232	58	51	4
Jalandhar	400	274	282	54
Kapurthala	845	392	395	126
Ludhiana	456	389	257	110
Mansa	152	33	50	115
Moga	316	134	138	58
Muktsar	320	96	29	7
Pathankot	7	0	0	0
Patiala	1527	517	482	343
Rupnagar	78	46	52	5
Sangrur	595	149	222	187
SAS NAGAR (Mohali)	86	54	45	67
SBS Nagar	37	34	9	5
Tarn Taran	3432	1423	1350	319
Total	16221	6134	5798	2704

(b) Haryana

District	15 Sep-25 Oct			
	2020	2021	2022	2023
AMBALA	222	87	93	114
BHIWANI	0	0	0	2
CHARKHI DADRI	0	0	0	0
FARIDABAD	1	1	1	2
FATEHABAD	129	116	139	128
GURGAON	0	0	0	0
HISAR	10	8	23	55
JHAJJAR	1	0	0	4
JIND	55	82	113	110
KAITHAL	378	513	379	113
KARNAL	437	568	224	55
KURUKSHETRA	348	325	246	102
MAHENDRAGARH	0	0	0	0
MEWAT	0	0	0	0
PALWAL	30	28	16	45
PANCHKULA	0	0	0	1
PANIPAT	13	22	20	18
REWARI	0	0	0	0
ROHTAK	2	0	0	7
SIRSA	35	17	28	13
SONIPAT	17	7	10	49
YAMUNANAGAR	94	61	80	53
Total	1772	1835	1372	871

(c) Uttar Pradesh

District	15 Sep-25 Oct													
	2020	2021	2022	2023	GAUTAMBUDHNAGAR	6	8	7	7	MUZAFARNAGAR	3	2	1	1
AGRA	2	0	0	1	GAZIPUR	0	0	0	0	PILHIBHIT	10	108	81	72
ALIGARH	55	21	23	77	GHAZIABAD	5	2	2	11	PRATAPGARH	4	0	0	1
ALLAHABAD	0	1	2	2	GONDA	0	0	0	0	RAIBEARELI	1	0	2	1
AMBEDKARNAGAR	0	0	0	0	GORAKHPUR	1	0	0	0	RAMPUR	60	50	41	39
AMETHI	0	1	4	1	HAMIRPUR	1	0	0	0	SAMBHAL	7	7	6	12
AMROHA	2	0	0	2	HAPUR	7	1	1	0	SANTKABIRNAGAR	0	0	0	1
AURAIYA	19	7	7	10	HARDOI	19	6	7	10	SANTRAVIDASNAGAR	0	0	0	0
AZAMGARH	0	0	0	0	HATHRAS	0	0	0	2	SHAHJAHANPUR	51	183	182	30
BADAUN	2	6	0	2	JALAUN	0	0	0	0	SHAMLI	21	15	5	5
BAGHPAT	4	1	1	1	JAUNPUR	0	0	0	1	SHARANPUR	46	20	4	2
BAHRAICH	23	2	5	2	JHANSI	30	6	0	24	SHRAWASTI	8	0	0	2
BALLIA	0	0	0	0	KANNAUJ	7	2	0	1	SIDDHARTHANAGAR	0	0	0	0
BALRAMPUR	5	1	1	1	KANPUR	5	7	10	20	SITAPUR	21	9	3	4
BANDA	0	0	0	0	KANPUR DEHAT	15	1	0	9	SONBHADRA	0	0	0	0
BARABANKI	23	21	20	41	KASGANJ	2	2	0	1	SULTANPUR	1	0	0	0
BAREILLY	25	15	9	19	KAUSHAMBI	17	3	2	17	UNNAO	7	1	0	7
BASTI	3	1	0	0	KHERI	52	55	60	8	VARANASI	1	0	0	0
BIJNOR	8	4	2	6	KUSHINAGAR	0	0	0	0	Total	783	671	552	628
BULANDSAHAR	18	2	7	6	LALITPUR	0	1	3	1					
CHANDAULI	0	0	0	0	LUCKNOW	4	0	1	4					
CHITRAKOOT	0	1	2	3	MAHARAJGANJ	0	0	1	2					
DEORIA	0	0	0	2	MAHOBA	12	0	0	0					
ETAH	12	6	1	11	MAINPURI	15	7	11	13					
ETAWAH	10	7	6	29	MATHURA	61	56	9	76					
FAIZABAD	3	0	0	2	MAU	0	0	0	0					
FARRUKHABAD	1	0	0	0	MEERUT	16	4	4	3					
FATEHPUR	26	6	17	17	MIRZAPUR	6	5	2	0					
FIROZABAD	12	4	0	3	MORADABAD	8	3	0	3					

(d) Delhi

District	15 Sep-25 Oct			
	2020	2021	2022	2023
CENTRAL	0	0	0	0
EAST	0	0	0	0
NEW DELHI	0	0	0	0
NORTH	2	0	5	2
NORTH EAST	0	0	0	0
NORTH WEST DELHI	3	0	0	0
SHAHADRA	0	0	0	0
SOUTH	1	0	0	0
SOUTH EAST	0	0	0	0
SOUTH WEST DELHI	0	0	0	0
WEST DELHI	2	0	0	0
Total	8	0	5	2

(e) Rajasthan

District	15 Sep-25 Oct			
	2020	2021	2022	2023
AJMER	2	0	0	0
ALWAR	2	0	0	0
BANSWARA	0	0	0	0
BARAN	109	0	10	219
BARMER	2	0	0	0
BHARATPUR	2	0	0	2
BHILWARA	4	0	0	0
BIKANER	1	0	0	0
BUNDI	26	3	36	102
CHITTAURGARH	0	2	2	8
CHURU	0	0	0	0
DAUSA	0	0	0	0
DHOLPUR	0	0	0	0
DUNGARPUR	0	0	0	0
GANGANAGAR	5	2	5	9
HANUMANGARH	222	48	19	64
JAIPUR	2	0	0	0
JAISELMER	2	0	0	0
JALOR	0	0	0	0
JHALAWAR	1	0	2	8
JHUNJHUNUN	1	0	0	0
JODHPUR	1	0	0	0
KARAULI	1	0	0	0
KOTA	43	3	25	106
NAGAU	0	0	0	0
PALI	2	0	0	0
PRATAPGARH	4	0	0	0
RAJSMAND	0	0	0	0
SIKAR	0	0	0	0
SIROHI	1	0	0	0
SWAIMADHOPUR	16	0	3	39
TONK	3	0	0	0
UDAIPUR	0	0	0	0
Total	452	58	102	557

(f) Madhya Pradesh

District	15 Sep-25 Oct								
	2020	2021	2022	2023					
					PANNA	10	1	0	1
ALIRAJPUR	0	0	0	0	RAISEN	79	3	7	28
ANUPPUR	0	0	0	0	RAJGARH	7	1	3	9
ASHOKNAGAR	50	1	5	78	RATLAM	0	0	0	1
BALAGHAT	0	0	0	0	REWA	19	1	1	1
BARWANI	0	0	0	0	SAGAR	20	15	14	30
BETUL	4	1	1	3	SATNA	44	10	1	7
BHIND	16	1	7	30	SEHORE	21	10	25	28
BHOPAL	14	5	3	12	SEONI	149	103	26	60
BURHANPUR	0	0	0	3	SHAHDOL	0	0	0	0
CHHATARPUR	4	0	0	3	SHAJAPUR	5	0	0	8
CHHINDWARA	17	11	4	11	SHEOPUR	54	1	3	167
DAMOH	41	15	13	20	SHIVPURI	27	0	9	37
DATIA	136	8	11	137	SIDHI	0	0	0	0
DEWAS	3	0	0	7	SINGRAULI	0	0	0	0
DHAR	23	0	0	27	TIKAMGARH	1	0	0	3
DINDORI	0	0	0	1	UJJAIN	5	0	0	14
EAST NIMAR	10	5	4	4	UMARIA	0	0	0	0
GUNA	29	2	11	218	VIDESHA	74	13	16	45
GWALIOR	147	2	4	36	WEST NIMAR	16	1	0	10
HARDA	10	17	4	19	Total	1323	291	210	1261
HOSHANGABAD	169	34	17	105					
INDORE	2	0	0	12					
JABALPUR	40	10	6	33					
JHABUA	0	0	0	0					
KATNI	22	0	0	2					
MANDLA	5	5	0	2					
MANDSAUR	3	0	0	1					
MORENA	23	5	3	29					
NARSHIMAPURA	24	10	12	19					
NIMACH	0	0	0	0					

State-wise and date-wise number of paddy residue burning events detected in 2020, 2021, 2022 and 2023
(Period: 15 September-25 October)

Number of Paddy Residue Burning Events Detected

Date	Punjab				Haryana				Uttar Pradesh			
	2020	2021	2022	2023	2020	2021	2022	2023	2020	2021	2022	2023
15-Sep	5	0	14	0	2	0	0	1	1	0	0	0
16-Sep	0	2	0	6	1	0	0	1	0	0	0	2
17-Sep	5	0	1	0	3	0	0	0	0	0	0	0
18-Sep	17	9	7	0	0	0	1	0	0	1	0	0
19-Sep	30	5	18	0	2	0	0	1	0	1	0	0
20-Sep	67	8	10	0	6	0	0	2	2	0	0	0
21-Sep	54	0	56	1	2	0	0	2	1	0	0	1
22-Sep	34	0	30	0	1	0	0	2	1	0	0	0
23-Sep	49	0	3	1	0	0	0	3	1	0	0	0
24-Sep	78	5	0	0	0	0	0	0	1	1	0	1
25-Sep	184	11	0	0	11	0	0	1	5	0	0	1
26-Sep	190	19	0	3	5	0	0	2	8	0	0	0
27-Sep	78	37	0	21	8	0	0	9	4	1	0	0
28-Sep	55	28	0	33	6	1	0	8	1	6	0	4
29-Sep	63	64	0	68	9	4	0	17	6	10	0	6
30-Sep	116	27	8	81	22	2	0	26	13	13	10	18
01-Oct	165	13	45	123	15	4	1	21	7	13	3	17
02-Oct	141	0	83	119	30	2	7	24	12	0	36	7
03-Oct	110	9	75	105	8	6	8	17	4	3	29	8
04-Oct	162	23	65	95	29	2	7	29	8	0	2	9
05-Oct	161	18	130	98	17	3	24	24	14	2	0	14
06-Oct	171	42	85	91	30	0	26	19	12	1	0	18
07-Oct	197	72	62	32	32	11	6	13	41	13	0	5
08-Oct	95	108	19	92	29	27	0	55	25	11	0	27
09-Oct	121	114	3	58	20	39	1	14	15	20	0	13
10-Oct	232	150	4	10	33	95	2	28	9	54	0	34
11-Oct	377	64	45	26	90	51	0	21	23	28	0	50

12-Oct	388	97	104	13	69	51	4	5	46	23	0	5
13-Oct	266	132	120	154	47	91	15	29	36	42	0	19
14-Oct	605	229	82	89	69	98	30	41	9	68	5	18
15-Oct	449	660	169	69	106	363	36	127	15	149	0	35
16-Oct	654	429	206	0	80	176	76	4	21	121	6	14
17-Oct	1172	14	403	1	143	0	86	0	38	39	7	0
18-Oct	938	57	342	18	166	1	134	8	76	0	30	2
19-Oct	1080	496	436	37	72	55	122	16	43	5	36	11
20-Oct	890	788	96	174	62	155	78	51	31	1	17	25
21-Oct	1392	597	393	146	101	131	107	68	25	5	23	59
22-Oct	1665	1111	582	30	128	140	122	25	32	3	18	117
23-Oct	1438	620	902	152	106	218	217	29	84	8	109	20
24-Oct	911	0	1019	360	57	38	250	70	63	11	212	38
25-Oct	1416	76	181	398	155	71	12	58	50	18	9	30
Total	16221	6134	5798	2704	1772	1835	1372	871	783	671	552	628

Number of Paddy Residue Burning Events Detected

Date	Delhi				Rajasthan				Madhya Pradesh			
	2020	2021	2022	2023	2020	2021	2022	2023	2020	2021	2022	2023
15-Sep	0	0	0	0	1	0	0	0	2	0	0	0
16-Sep	0	0	0	0	0	0	0	0	0	0	0	0
17-Sep	0	0	0	0	0	0	0	0	0	0	0	0
18-Sep	0	0	0	0	0	0	0	0	0	0	0	0
19-Sep	0	0	0	0	0	0	0	0	0	0	0	1
20-Sep	0	0	0	0	0	0	0	0	0	0	0	1
21-Sep	0	0	0	0	1	0	1	0	2	0	0	0
22-Sep	0	0	0	0	0	0	0	0	0	0	0	0
23-Sep	0	0	0	0	1	0	0	0	0	0	0	0
24-Sep	0	0	0	0	0	0	0	0	0	0	0	0
25-Sep	0	0	0	0	1	0	0	0	0	0	0	1
26-Sep	0	0	0	1	1	0	0	0	2	0	0	0
27-Sep	0	0	0	0	0	0	0	0	1	0	0	0
28-Sep	0	0	0	0	0	0	0	0	1	1	0	2

29-Sep	0	0	0	0	3	0	0	6	0	4	0	5
30-Sep	1	0	0	0	1	0	0	4	5	0	0	11
01-Oct	0	0	0	0	4	1	1	4	13	0	1	8
02-Oct	1	0	0	0	7	0	3	4	12	0	1	1
03-Oct	0	0	0	0	9	0	2	5	5	1	5	5
04-Oct	0	0	0	0	15	0	0	22	4	2	0	12
05-Oct	0	0	2	0	14	0	1	11	13	1	0	18
06-Oct	1	0	0	0	16	0	0	9	37	1	0	7
07-Oct	0	0	0	0	14	1	1	7	31	1	0	9
08-Oct	0	0	0	0	11	0	0	9	17	2	0	18
09-Oct	0	0	0	0	12	0	0	17	15	4	0	24
10-Oct	0	0	0	0	14	1	0	26	18	10	0	52
11-Oct	0	0	0	1	21	7	1	21	32	2	0	24
12-Oct	0	0	0	0	24	1	2	1	44	1	1	1
13-Oct	0	0	0	0	7	5	2	28	21	2	7	32
14-Oct	0	0	0	0	16	1	1	15	15	11	1	26
15-Oct	0	0	0	0	9	8	2	34	8	27	2	66
16-Oct	1	0	0	0	12	2	4	18	23	13	2	51
17-Oct	0	0	0	0	26	0	4	12	63	1	11	31
18-Oct	0	0	1	0	37	2	12	11	88	0	15	13
19-Oct	0	0	0	0	27	5	12	31	49	1	12	65
20-Oct	0	0	0	0	26	4	4	57	9	21	7	131
21-Oct	2	0	0	0	32	2	6	34	112	30	18	147
22-Oct	0	0	0	0	29	5	12	57	183	29	31	119
23-Oct	1	0	0	0	23	7	20	29	204	32	70	89
24-Oct	0	0	2	0	20	4	7	38	150	34	26	132
25-Oct	1	0	0	0	18	2	4	47	144	60	0	159
Total	8	0	5	2	452	58	102	557	1323	291	210	1261

Details of residue burning events in Punjab on 25-Oct-2023

S. No.	District	Tehsil / Block	Satellite	Latitude	Longitude	ACQ_TIME	Day / Night	Fire Power (W/m2)
1	AMRITSAR	AJNALA	AQUA	31.95600	74.87800	14:14:18	D	12.50
2	AMRITSAR	AJNALA	AQUA	31.96500	74.86400	14:14:18	D	12.00
3	AMRITSAR	AJNALA	AQUA	31.98700	74.88600	14:14:18	D	8.20
4	AMRITSAR	AJNALA	S-NPP	31.82357	74.92175	13:47:47	D	6.10
5	AMRITSAR	AJNALA	S-NPP	31.83144	74.75763	13:47:47	D	2.90
6	AMRITSAR	AJNALA	S-NPP	31.84231	74.88479	13:47:47	D	3.90
7	AMRITSAR	AJNALA	S-NPP	31.86390	74.67802	13:47:47	D	11.30
8	AMRITSAR	AJNALA	S-NPP	31.86543	74.91904	13:47:47	D	2.80
9	AMRITSAR	AJNALA	S-NPP	31.93010	74.88165	13:47:47	D	4.10
10	AMRITSAR	AJNALA	S-NPP	31.95575	74.90730	13:47:47	D	3.80
11	AMRITSAR	AJNALA	S-NPP	31.96022	74.87940	13:47:47	D	11.70
12	AMRITSAR	AJNALA	S-NPP	31.96311	74.97166	13:47:47	D	11.40
13	AMRITSAR	AJNALA	S-NPP	31.96468	74.85160	13:47:47	D	23.30
14	AMRITSAR	AJNALA	S-NPP	31.98783	74.88586	13:47:47	D	10.60
15	AMRITSAR	ATTARI	AQUA	31.55100	74.64000	14:14:18	D	5.10
16	AMRITSAR	ATTARI	AQUA	31.57700	74.68500	14:14:18	D	11.40
17	AMRITSAR	ATTARI	AQUA	31.61300	74.56100	14:14:18	D	6.60
18	AMRITSAR	ATTARI	S-NPP	31.51617	74.58959	13:47:47	D	16.00
19	AMRITSAR	ATTARI	S-NPP	31.51800	74.60485	13:47:47	D	3.10
20	AMRITSAR	ATTARI	S-NPP	31.54567	74.71004	13:47:47	D	3.00
21	AMRITSAR	ATTARI	S-NPP	31.56054	74.67619	13:47:47	D	4.00
22	AMRITSAR	ATTARI	S-NPP	31.57039	74.63279	13:47:47	D	3.70
23	AMRITSAR	ATTARI	S-NPP	31.57544	74.80030	13:47:47	D	6.60
24	AMRITSAR	ATTARI	S-NPP	31.57722	74.65779	13:47:47	D	4.20
25	AMRITSAR	ATTARI	S-NPP	31.58033	74.68346	13:47:47	D	2.10
26	AMRITSAR	ATTARI	S-NPP	31.59587	74.71776	13:47:47	D	3.50
27	AMRITSAR	ATTARI	S-NPP	31.60652	74.77412	13:47:47	D	4.70
28	AMRITSAR	ATTARI	S-NPP	31.60725	74.77155	13:47:47	D	5.20
29	AMRITSAR	ATTARI	S-NPP	31.61824	74.57561	13:47:47	D	9.20

30	AMRITSAR	ATTARI	S-NPP	31.61935	74.64847	13:47:47	D	5.40
31	AMRITSAR	ATTARI	S-NPP	31.62623	74.57952	13:47:47	D	3.60
32	AMRITSAR	CHOGAWAN	AQUA	31.87400	74.63000	14:14:18	D	5.60
33	AMRITSAR	CHOGAWAN	S-NPP	31.66322	74.69913	13:47:47	D	3.10
34	AMRITSAR	CHOGAWAN	S-NPP	31.68419	74.54636	13:47:47	D	3.40
35	AMRITSAR	CHOGAWAN	S-NPP	31.71374	74.54153	13:47:47	D	4.60
36	AMRITSAR	CHOGAWAN	S-NPP	31.73095	74.55954	13:47:47	D	3.60
37	AMRITSAR	CHOGAWAN	S-NPP	31.75063	74.62949	13:47:47	D	13.60
38	AMRITSAR	CHOGAWAN	S-NPP	31.79113	74.57412	13:47:47	D	3.10
39	AMRITSAR	HARSHA CHHINA	AQUA	31.75200	74.78300	14:14:18	D	5.90
40	AMRITSAR	HARSHA CHHINA	S-NPP	31.77477	74.70465	13:47:47	D	4.00
41	AMRITSAR	HARSHA CHHINA	S-NPP	31.77662	74.75208	13:47:47	D	5.80
42	AMRITSAR	HARSHA CHHINA	S-NPP	31.80268	74.68432	13:47:47	D	3.20
43	AMRITSAR	JANDIALA GURU	AQUA	31.67500	74.99600	14:14:18	D	11.30
44	AMRITSAR	MAJITHA	AQUA	31.80200	75.03400	14:14:18	D	7.70
45	AMRITSAR	MAJITHA	AQUA	31.81200	75.03200	14:14:18	D	9.10
46	AMRITSAR	MAJITHA	S-NPP	31.72010	74.95177	13:47:47	D	6.90
47	AMRITSAR	MAJITHA	S-NPP	31.72713	75.07616	13:47:47	D	5.60
48	AMRITSAR	MAJITHA	S-NPP	31.73900	75.05513	13:47:47	D	5.20
49	AMRITSAR	MAJITHA	S-NPP	31.73937	74.95682	13:47:47	D	2.30
50	AMRITSAR	MAJITHA	S-NPP	31.73975	75.05224	13:47:47	D	4.00
51	AMRITSAR	MAJITHA	S-NPP	31.74022	74.95944	13:47:47	D	3.00
52	AMRITSAR	MAJITHA	S-NPP	31.75209	75.10258	13:47:47	D	4.90
53	AMRITSAR	MAJITHA	S-NPP	31.75310	75.09960	13:47:47	D	6.20
54	AMRITSAR	MAJITHA	S-NPP	31.75584	74.90005	13:47:47	D	16.10
55	AMRITSAR	MAJITHA	S-NPP	31.77945	75.03775	13:47:47	D	4.00
56	AMRITSAR	MAJITHA	S-NPP	31.78000	75.07614	13:47:47	D	3.60
57	AMRITSAR	MAJITHA	S-NPP	31.78151	74.92300	13:47:47	D	5.50
58	AMRITSAR	RAYYA	AQUA	31.54500	75.28000	14:14:18	D	9.20
59	AMRITSAR	RAYYA	AQUA	31.57800	75.30200	14:14:18	D	17.10
60	AMRITSAR	RAYYA	AQUA	31.65000	75.29700	14:14:18	D	6.70
61	AMRITSAR	RAYYA	AQUA	31.68800	75.27700	14:14:18	D	8.20
62	AMRITSAR	RAYYA	AQUA	31.68800	75.28500	14:14:18	D	7.30

63	AMRITSAR	RAYYA	S-NPP	31.52922	75.11764	13:47:47	D	4.50
64	AMRITSAR	RAYYA	S-NPP	31.57240	75.20189	13:47:47	D	3.60
65	AMRITSAR	RAYYA	S-NPP	31.58038	75.30656	13:47:47	D	2.90
66	AMRITSAR	RAYYA	S-NPP	31.61241	75.21228	13:47:47	D	2.60
67	AMRITSAR	RAYYA	S-NPP	31.65718	75.20871	13:47:47	D	2.60
68	AMRITSAR	RAYYA	S-NPP	31.66276	75.27700	13:47:47	D	3.90
69	AMRITSAR	RAYYA	S-NPP	31.66518	75.28008	13:47:47	D	4.40
70	AMRITSAR	RAYYA	S-NPP	31.68371	75.27158	13:47:47	D	6.30
71	AMRITSAR	RAYYA	S-NPP	31.69261	75.28142	13:47:47	D	3.90
72	AMRITSAR	TARSIKKA	AQUA	31.62800	75.19400	14:14:18	D	11.10
73	AMRITSAR	TARSIKKA	AQUA	31.68000	75.12600	14:14:18	D	12.30
74	AMRITSAR	TARSIKKA	AQUA	31.71800	75.10700	14:14:18	D	8.00
75	AMRITSAR	TARSIKKA	S-NPP	31.65091	75.18748	13:47:47	D	2.80
76	AMRITSAR	TARSIKKA	S-NPP	31.65669	75.16994	13:47:47	D	3.00
77	AMRITSAR	TARSIKKA	S-NPP	31.69362	75.08693	13:47:47	D	6.60
78	AMRITSAR	TARSIKKA	S-NPP	31.70620	75.16219	13:47:47	D	6.80
79	AMRITSAR	VERKA	S-NPP	31.74526	74.87479	13:47:47	D	5.80
80	BARNALA	MAHAL KALAN	S-NPP	30.46828	75.54015	13:47:47	D	2.30
81	BARNALA	SEHNA	S-NPP	30.51199	75.32951	13:47:47	D	6.00
82	BATHINDA	PHUL	S-NPP	30.30347	75.28015	13:47:47	D	4.60
83	BATHINDA	TALWANDI SABO	AQUA	29.91800	75.12700	14:14:18	D	19.00
84	BATHINDA	TALWANDI SABO	S-NPP	29.83119	75.17729	13:47:47	D	2.90
85	BATHINDA	TALWANDI SABO	S-NPP	29.83214	75.17946	13:47:47	D	2.00
86	FARIDKOT	FARIDKOT	AQUA	30.76000	74.84000	14:14:18	D	10.20
87	FARIDKOT	FARIDKOT	AQUA	30.80000	74.57000	14:14:18	D	8.30
88	FARIDKOT	FARIDKOT	S-NPP	30.59574	74.68584	13:47:47	D	40.20
89	FARIDKOT	FARIDKOT	S-NPP	30.66619	74.69176	13:47:47	D	2.40
90	FARIDKOT	FARIDKOT	S-NPP	30.69317	74.60631	13:47:47	D	2.40
91	FARIDKOT	FARIDKOT	S-NPP	30.81182	74.69611	13:47:47	D	13.60
92	FARIDKOT	JAITON	S-NPP	30.47754	74.87601	13:47:47	D	2.90
93	FARIDKOT	JAITON	S-NPP	30.48125	74.87542	13:47:47	D	2.90
94	FARIDKOT	KOT KAPURA	S-NPP	30.61785	74.80470	13:47:47	D	6.10
95	FATEHGARH SAHIB	BASSI PATHANAN	S-NPP	30.66952	76.41380	13:47:47	D	4.60

96	FATEHGARH SAHIB	BASSI PATHANAN	S-NPP	30.68650	76.45673	13:47:47	D	4.90
97	FATEHGARH SAHIB	BASSI PATHANAN	S-NPP	30.69951	76.42598	13:47:47	D	9.50
98	FATEHGARH SAHIB	BASSI PATHANAN	S-NPP	30.70529	76.36764	13:47:47	D	3.30
99	FATEHGARH SAHIB	BASSI PATHANAN	S-NPP	30.70574	76.37167	13:47:47	D	3.30
100	FATEHGARH SAHIB	BASSI PATHANAN	S-NPP	30.73826	76.51644	13:47:47	D	1.70
101	FATEHGARH SAHIB	KHAMANON	S-NPP	30.75491	76.36510	13:47:47	D	3.20
102	FATEHGARH SAHIB	KHAMANON	S-NPP	30.75876	76.43871	13:47:47	D	12.40
103	FATEHGARH SAHIB	KHAMANON	S-NPP	30.79065	76.35584	13:47:47	D	4.50
104	FATEHGARH SAHIB	KHERA	AQUA	30.58300	76.46600	14:14:18	D	11.80
105	FATEHGARH SAHIB	KHERA	S-NPP	30.56652	76.52242	13:47:47	D	4.80
106	FATEHGARH SAHIB	KHERA	S-NPP	30.60295	76.51720	13:47:47	D	3.40
107	FATEHGARH SAHIB	KHERA	S-NPP	30.62491	76.49456	13:47:47	D	17.50
108	FATEHGARH SAHIB	KHERA	S-NPP	30.62495	76.49333	13:47:47	D	9.00
109	FATEHGARH SAHIB	KHERA	S-NPP	30.62541	76.49741	13:47:47	D	9.00
110	FATEHGARH SAHIB	KHERA	S-NPP	30.62555	76.61007	13:47:47	D	3.50
111	FATEHGARH SAHIB	KHERA	S-NPP	30.63950	76.55492	13:47:47	D	2.80
112	FATEHGARH SAHIB	KHERA	S-NPP	30.65180	76.51562	13:47:47	D	2.80
113	FATEHGARH SAHIB	SIRHIND	S-NPP	30.49385	76.46222	13:47:47	D	3.90
114	FATEHGARH SAHIB	SIRHIND	S-NPP	30.58457	76.38803	13:47:47	D	2.30
115	FAZILKA	FAZILKA	S-NPP	30.43601	73.99284	13:47:47	D	4.00
116	FAZILKA	FAZILKA	S-NPP	30.43694	73.99095	13:47:47	D	3.40
117	FAZILKA	JALALABAD	S-NPP	30.48776	74.29131	13:47:47	D	7.30
118	FAZILKA	JALALABAD	S-NPP	30.57542	74.13309	13:47:47	D	2.50
119	FIROZPUR	FIROZPUR	AQUA	30.81600	74.54300	14:14:18	D	13.00
120	FIROZPUR	FIROZPUR	AQUA	30.85500	74.62100	14:14:18	D	19.80
121	FIROZPUR	FIROZPUR	AQUA	30.85600	74.63300	14:14:18	D	13.30
122	FIROZPUR	FIROZPUR	AQUA	30.86400	74.62000	14:14:18	D	6.20
123	FIROZPUR	FIROZPUR	AQUA	31.01000	74.70600	14:14:18	D	6.20
124	FIROZPUR	FIROZPUR	AQUA	31.01100	74.71800	14:14:18	D	31.60
125	FIROZPUR	FIROZPUR	AQUA	31.02100	74.71600	14:14:18	D	10.40
126	FIROZPUR	FIROZPUR	AQUA	31.03300	74.73900	14:14:18	D	28.10
127	FIROZPUR	FIROZPUR	S-NPP	30.84216	74.55691	13:47:47	D	2.70
128	FIROZPUR	FIROZPUR	S-NPP	30.93794	74.54637	13:47:47	D	2.60

129	FIROZPUR	FIROZPUR	S-NPP	30.94115	74.54816	13:47:47	D	3.70
130	FIROZPUR	FIROZPUR	S-NPP	31.00646	74.56284	13:47:47	D	2.00
131	FIROZPUR	FIROZPUR	S-NPP	31.01808	74.71970	13:47:47	D	5.20
132	FIROZPUR	GHALL KHURD	AQUA	30.88100	74.67800	14:14:18	D	12.10
133	FIROZPUR	GHALL KHURD	AQUA	30.89200	74.74400	14:14:18	D	6.50
134	FIROZPUR	GHALL KHURD	AQUA	30.92800	74.71400	14:14:18	D	15.00
135	FIROZPUR	GHALL KHURD	AQUA	30.97500	74.78000	14:14:18	D	11.20
136	FIROZPUR	GHALL KHURD	S-NPP	30.83896	74.85675	13:47:47	D	5.20
137	FIROZPUR	GHALL KHURD	S-NPP	30.92217	74.69154	13:47:47	D	3.00
138	FIROZPUR	GHALL KHURD	S-NPP	30.95597	74.70396	13:47:47	D	10.30
139	FIROZPUR	GHALL KHURD	S-NPP	30.95721	74.70129	13:47:47	D	4.10
140	FIROZPUR	GHALL KHURD	S-NPP	30.95784	74.70633	13:47:47	D	6.60
141	FIROZPUR	GHALL KHURD	S-NPP	30.97166	74.80491	13:47:47	D	3.10
142	FIROZPUR	GURUHAR SAHAI	AQUA	30.65300	74.21100	14:14:18	D	14.10
143	FIROZPUR	GURUHAR SAHAI	AQUA	30.65400	74.22200	14:14:18	D	5.70
144	FIROZPUR	GURUHAR SAHAI	AQUA	30.66200	74.47400	14:14:18	D	36.00
145	FIROZPUR	GURUHAR SAHAI	AQUA	30.66900	74.26700	14:14:18	D	6.20
146	FIROZPUR	GURUHAR SAHAI	AQUA	30.68300	74.45300	14:14:18	D	12.20
147	FIROZPUR	GURUHAR SAHAI	AQUA	30.75600	74.41700	14:14:18	D	27.00
148	FIROZPUR	GURUHAR SAHAI	AQUA	30.76200	74.42100	14:14:18	D	23.10
149	FIROZPUR	GURUHAR SAHAI	S-NPP	30.65970	74.22060	13:47:47	D	5.40
150	FIROZPUR	GURUHAR SAHAI	S-NPP	30.67304	74.35537	13:47:47	D	5.50
151	FIROZPUR	GURUHAR SAHAI	S-NPP	30.72699	74.30914	13:47:47	D	1.70
152	FIROZPUR	GURUHAR SAHAI	S-NPP	30.72732	74.46249	13:47:47	D	13.50
153	FIROZPUR	MAKHU	AQUA	31.03700	74.85000	14:14:18	D	9.20
154	FIROZPUR	MAKHU	S-NPP	31.06140	74.98507	13:47:47	D	3.70
155	FIROZPUR	MAMDOT	AQUA	30.76100	74.40900	14:14:18	D	16.60
156	FIROZPUR	MAMDOT	AQUA	30.78200	74.50100	14:14:18	D	7.50
157	FIROZPUR	MAMDOT	AQUA	30.78600	74.38100	14:14:18	D	5.80
158	FIROZPUR	MAMDOT	AQUA	30.80000	74.34300	14:14:18	D	6.20
159	FIROZPUR	MAMDOT	AQUA	30.81400	74.37600	14:14:18	D	11.50
160	FIROZPUR	MAMDOT	AQUA	30.92400	74.44700	14:14:18	D	7.20
161	FIROZPUR	MAMDOT	AQUA	30.92500	74.45900	14:14:18	D	10.50

162	FIROZPUR	MAMDOT	S-NPP	30.77095	74.51537	13:47:47	D	34.90
163	FIROZPUR	MAMDOT	S-NPP	30.77825	74.39445	13:47:47	D	2.50
164	FIROZPUR	MAMDOT	S-NPP	30.78799	74.53268	13:47:47	D	4.00
165	FIROZPUR	MAMDOT	S-NPP	30.79029	74.34298	13:47:47	D	4.20
166	FIROZPUR	MAMDOT	S-NPP	30.79345	74.48664	13:47:47	D	11.80
167	FIROZPUR	MAMDOT	S-NPP	30.80539	74.34544	13:47:47	D	2.90
168	FIROZPUR	MAMDOT	S-NPP	30.80573	74.34801	13:47:47	D	3.10
169	FIROZPUR	MAMDOT	S-NPP	30.81291	74.49348	13:47:47	D	5.70
170	FIROZPUR	MAMDOT	S-NPP	30.81896	74.36562	13:47:47	D	4.80
171	FIROZPUR	MAMDOT	S-NPP	30.88003	74.41022	13:47:47	D	2.60
172	FIROZPUR	MAMDOT	S-NPP	30.89766	74.52261	13:47:47	D	2.80
173	FIROZPUR	MAMDOT	S-NPP	30.92316	74.45813	13:47:47	D	4.40
174	FIROZPUR	MAMDOT	S-NPP	30.93401	74.48875	13:47:47	D	2.40
175	FIROZPUR	MAMDOT	S-NPP	30.93469	74.46352	13:47:47	D	5.00
176	FIROZPUR	ZIRA	AQUA	31.00100	74.88100	14:14:18	D	6.90
177	FIROZPUR	ZIRA	S-NPP	30.96987	74.89656	13:47:47	D	3.00
178	FIROZPUR	ZIRA	S-NPP	31.01731	74.87072	13:47:47	D	8.60
179	FIROZPUR	ZIRA	S-NPP	31.02104	74.87013	13:47:47	D	7.30
180	GURDASPUR	DERA BABA NANAK	AQUA	31.93100	75.02000	14:14:18	D	20.30
181	GURDASPUR	DERA BABA NANAK	S-NPP	31.90224	75.13862	13:47:47	D	2.80
182	GURDASPUR	FATEHGARH CHURIAN	AQUA	31.84300	75.04000	14:14:18	D	11.00
183	GURDASPUR	FATEHGARH CHURIAN	AQUA	31.84400	75.04800	14:14:18	D	6.30
184	GURDASPUR	FATEHGARH CHURIAN	S-NPP	31.92639	74.94749	13:47:47	D	3.00
185	HOSHIARPUR	MAHILPUR	S-NPP	31.34265	76.05856	13:47:47	D	3.50
186	JALANDHAR	JALANDHAR WEST	AQUA	31.50700	75.55100	14:14:18	D	14.60
187	JALANDHAR	LOHIAN	S-NPP	31.11901	75.25397	13:47:47	D	16.80
188	JALANDHAR	LOHIAN	S-NPP	31.12002	75.25095	13:47:47	D	5.60
189	JALANDHAR	LOHIAN	S-NPP	31.12065	75.25633	13:47:47	D	13.90
190	JALANDHAR	MEHATPUR	S-NPP	30.98680	75.46173	13:47:47	D	8.10
191	JALANDHAR	NAKODAR	AQUA	31.18700	75.34900	14:14:18	D	7.60
192	JALANDHAR	NAKODAR	S-NPP	31.09572	75.51013	13:47:47	D	14.60
193	JALANDHAR	SHAHKOT	AQUA	31.09700	75.26400	14:14:18	D	12.70
194	JALANDHAR	SHAHKOT	S-NPP	31.04783	75.26215	13:47:47	D	4.70

195	JALANDHAR	SHAHKOT	S-NPP	31.05480	75.25560	13:47:47	D	3.60
196	JALANDHAR	SHAHKOT	S-NPP	31.06552	75.28132	13:47:47	D	3.50
197	KAPURTHALA	DHILWAN	AQUA	31.40400	75.20900	14:14:18	D	9.00
198	KAPURTHALA	DHILWAN	S-NPP	31.35934	75.24560	13:47:47	D	5.10
199	KAPURTHALA	DHILWAN	S-NPP	31.51265	75.37585	13:47:47	D	6.20
200	KAPURTHALA	KAPURTHALA	AQUA	31.33400	75.30000	14:14:18	D	43.70
201	KAPURTHALA	KAPURTHALA	AQUA	31.36300	75.28200	14:14:18	D	7.10
202	KAPURTHALA	KAPURTHALA	S-NPP	31.25862	75.36839	13:47:47	D	3.90
203	KAPURTHALA	KAPURTHALA	S-NPP	31.36749	75.28307	13:47:47	D	3.10
204	KAPURTHALA	NADALA	S-NPP	31.57176	75.51457	13:47:47	D	3.40
205	KAPURTHALA	SULTANPUR LODHI	AQUA	31.19000	75.20400	14:14:18	D	17.20
206	KAPURTHALA	SULTANPUR LODHI	AQUA	31.20200	75.21500	14:14:18	D	12.80
207	KAPURTHALA	SULTANPUR LODHI	AQUA	31.20600	75.25300	14:14:18	D	9.70
208	KAPURTHALA	SULTANPUR LODHI	AQUA	31.23400	75.31500	14:14:18	D	13.90
209	KAPURTHALA	SULTANPUR LODHI	AQUA	31.23600	75.32100	14:14:18	D	7.60
210	KAPURTHALA	SULTANPUR LODHI	AQUA	31.30600	75.15200	14:14:18	D	8.80
211	KAPURTHALA	SULTANPUR LODHI	AQUA	31.33100	75.18200	14:14:18	D	12.10
212	KAPURTHALA	SULTANPUR LODHI	AQUA	31.34100	75.27200	14:14:18	D	11.60
213	KAPURTHALA	SULTANPUR LODHI	S-NPP	31.19252	75.18783	13:47:47	D	7.80
214	KAPURTHALA	SULTANPUR LODHI	S-NPP	31.20324	75.14806	13:47:47	D	5.00
215	KAPURTHALA	SULTANPUR LODHI	S-NPP	31.20445	75.09370	13:47:47	D	3.10
216	KAPURTHALA	SULTANPUR LODHI	S-NPP	31.23791	75.28832	13:47:47	D	3.10
217	KAPURTHALA	SULTANPUR LODHI	S-NPP	31.25388	75.25826	13:47:47	D	1.20
218	KAPURTHALA	SULTANPUR LODHI	S-NPP	31.30719	75.18402	13:47:47	D	6.30
219	KAPURTHALA	SULTANPUR LODHI	S-NPP	31.34494	75.18728	13:47:47	D	4.70
220	LUDHIANA	JAGRAON	AQUA	30.76200	75.52700	14:14:18	D	13.90
221	LUDHIANA	JAGRAON	S-NPP	30.76654	75.47707	13:47:47	D	21.30
222	LUDHIANA	JAGRAON	S-NPP	30.80415	75.59985	13:47:47	D	2.70
223	LUDHIANA	KHANNA	S-NPP	30.65701	76.15358	13:47:47	D	6.90
224	LUDHIANA	PAKHOWAL	AQUA	30.69500	75.74800	14:14:18	D	17.30
225	LUDHIANA	RAIKOT	S-NPP	30.72935	75.52726	13:47:47	D	4.90
226	LUDHIANA	RAIKOT	S-NPP	30.73135	75.52393	13:47:47	D	6.20
227	LUDHIANA	RAIKOT	S-NPP	30.73182	75.54920	13:47:47	D	3.70

228	LUDHIANA	SAMRALA	S-NPP	30.78471	76.12125	13:47:47	D	5.50
229	LUDHIANA	SAMRALA	S-NPP	30.80009	76.25764	13:47:47	D	3.80
230	LUDHIANA	SAMRALA	S-NPP	30.82348	76.08945	13:47:47	D	7.50
231	LUDHIANA	SIDHWAN BET	S-NPP	30.84455	75.39095	13:47:47	D	10.80
232	LUDHIANA	SIDHWAN BET	S-NPP	30.89986	75.43217	13:47:47	D	9.80
233	LUDHIANA	SIDHWAN BET	S-NPP	30.90943	75.51427	13:47:47	D	2.60
234	LUDHIANA	SIDHWAN BET	S-NPP	30.91707	75.41293	13:47:47	D	3.30
235	LUDHIANA	SIDHWAN BET	S-NPP	30.96465	75.37077	13:47:47	D	19.90
236	MANSA	BHIKHI	S-NPP	30.10901	75.61892	13:47:47	D	4.90
237	MANSA	BHIKHI	S-NPP	30.11926	75.60635	13:47:47	D	2.50
238	MANSA	BHIKHI	S-NPP	30.14242	75.43931	13:47:47	D	8.20
239	MANSA	BUDHLADA	S-NPP	29.79364	75.63531	13:47:47	D	3.20
240	MANSA	BUDHLADA	S-NPP	29.84888	75.74224	13:47:47	D	9.10
241	MANSA	BUDHLADA	S-NPP	29.88372	75.62440	13:47:47	D	3.70
242	MANSA	BUDHLADA	S-NPP	29.88759	75.42380	13:47:47	D	4.60
243	MANSA	BUDHLADA	S-NPP	29.90197	75.68198	13:47:47	D	6.80
244	MANSA	BUDHLADA	S-NPP	29.96901	75.62234	13:47:47	D	10.60
245	MANSA	JHUNIR	AQUA	29.89100	75.23100	14:14:18	D	6.70
246	MANSA	JHUNIR	S-NPP	29.79560	75.35576	13:47:47	D	13.90
247	MANSA	JHUNIR	S-NPP	29.85078	75.36839	13:47:47	D	2.40
248	MANSA	JHUNIR	S-NPP	29.85482	75.27518	13:47:47	D	3.80
249	MANSA	MANSA	S-NPP	29.92221	75.42378	13:47:47	D	3.20
250	MANSA	MANSA	S-NPP	29.95844	75.37391	13:47:47	D	3.10
251	MANSA	MANSA	S-NPP	29.96100	75.36286	13:47:47	D	2.80
252	MANSA	MANSA	S-NPP	29.96121	75.36443	13:47:47	D	3.10
253	MANSA	SARDULGARH	AQUA	29.66800	75.23000	14:14:18	D	11.10
254	MANSA	SARDULGARH	AQUA	29.73100	75.34500	14:14:18	D	11.70
255	MANSA	SARDULGARH	AQUA	29.75800	75.31500	14:14:18	D	6.40
256	MANSA	SARDULGARH	AQUA	29.77500	75.26800	14:14:18	D	32.60
257	MANSA	SARDULGARH	S-NPP	29.66384	75.21656	13:47:47	D	7.40
258	MANSA	SARDULGARH	S-NPP	29.74998	75.32593	13:47:47	D	5.60
259	MANSA	SARDULGARH	S-NPP	29.76439	75.31841	13:47:47	D	2.80
260	MANSA	SARDULGARH	S-NPP	29.77312	75.32759	13:47:47	D	9.70

261	MANSA	SARDULGARH	S-NPP	29.77694	75.29543	13:47:47	D	2.50
262	MANSA	SARDULGARH	S-NPP	29.79822	75.25018	13:47:47	D	1.70
263	MANSA	SARDULGARH	S-NPP	29.80008	75.26559	13:47:47	D	7.40
264	MANSA	SARDULGARH	S-NPP	29.80382	75.26500	13:47:47	D	3.10
265	MANSA	SARDULGARH	S-NPP	29.80882	75.24329	13:47:47	D	3.40
266	MOGA	KOT ISE KHAN AT DHARAMKOT	S-NPP	30.91192	75.33658	13:47:47	D	17.40
267	MOGA	MOGA-1	AQUA	30.84500	75.29700	14:14:18	D	15.40
268	MOGA	MOGA-1	S-NPP	30.74343	75.27774	13:47:47	D	9.20
269	MOGA	MOGA-1	S-NPP	30.74722	75.27715	13:47:47	D	11.30
270	MOGA	MOGA-1	S-NPP	30.76551	75.30147	13:47:47	D	3.10
271	MOGA	MOGA-1	S-NPP	30.77185	75.19234	13:47:47	D	6.40
272	MOGA	MOGA-1	S-NPP	30.78697	75.22231	13:47:47	D	7.20
273	MOGA	MOGA-1	S-NPP	30.79075	75.22173	13:47:47	D	7.20
274	MOGA	MOGA-1	S-NPP	30.81466	75.23180	13:47:47	D	4.30
275	MOGA	MOGA-1	S-NPP	30.86055	75.32806	13:47:47	D	9.40
276	MOGA	NIHAL SINGH	S-NPP	30.57006	75.23435	13:47:47	D	3.80
277	MOGA	NIHAL SINGH	S-NPP	30.63796	75.32396	13:47:47	D	4.70
278	MUKTSAR	LAMBI	AQUA	30.14600	74.55700	14:14:18	D	10.90
279	MUKTSAR	LAMBI	AQUA	30.14700	74.56900	14:14:18	D	29.20
280	MUKTSAR	MALOUT	S-NPP	30.27849	74.33600	13:47:47	D	3.60
281	MUKTSAR	MALOUT	S-NPP	30.30640	74.50270	13:47:47	D	5.30
282	PATIALA	BHUNARHERI	S-NPP	30.08246	76.53596	13:47:47	D	6.80
283	PATIALA	BHUNARHERI	S-NPP	30.12126	76.58514	13:47:47	D	7.40
284	PATIALA	BHUNARHERI	S-NPP	30.12530	76.58456	13:47:47	D	7.40
285	PATIALA	BHUNARHERI	S-NPP	30.18771	76.59216	13:47:47	D	3.70
286	PATIALA	BHUNARHERI	S-NPP	30.24474	76.55106	13:47:47	D	5.40
287	PATIALA	BHUNARHERI	S-NPP	30.25735	76.51637	13:47:47	D	6.60
288	PATIALA	BHUNARHERI	S-NPP	30.28198	76.51696	13:47:47	D	4.40
289	PATIALA	GHANAUR	S-NPP	30.32240	76.66079	13:47:47	D	5.60
290	PATIALA	GHANAUR	S-NPP	30.32261	76.66034	13:47:47	D	6.50
291	PATIALA	GHANAUR	S-NPP	30.32459	76.56475	13:47:47	D	1.80
292	PATIALA	GHANAUR	S-NPP	30.35298	76.52348	13:47:47	D	2.50
293	PATIALA	GHANAUR	S-NPP	30.39517	76.60864	13:47:47	D	2.40

294	PATIALA	GHANAUR	S-NPP	30.39561	76.53804	13:47:47	D	18.60
295	PATIALA	NABHA	S-NPP	30.31846	76.13741	13:47:47	D	7.40
296	PATIALA	NABHA	S-NPP	30.33482	76.24772	13:47:47	D	3.20
297	PATIALA	NABHA	S-NPP	30.42587	76.10759	13:47:47	D	13.40
298	PATIALA	NABHA	S-NPP	30.43772	76.07056	13:47:47	D	30.70
299	PATIALA	PATIALA	AQUA	30.26700	76.18000	14:14:18	D	29.80
300	PATIALA	PATIALA	AQUA	30.40300	76.49000	14:14:18	D	26.80
301	PATIALA	PATIALA	AQUA	30.40500	76.50500	14:14:18	D	29.30
302	PATIALA	PATIALA	S-NPP	30.26699	76.18039	13:47:47	D	1.80
303	PATIALA	PATIALA	S-NPP	30.39822	76.45139	13:47:47	D	1.80
304	PATIALA	PATRAN	S-NPP	29.87678	76.08801	13:47:47	D	15.90
305	PATIALA	PATRAN	S-NPP	29.91461	76.03643	13:47:47	D	3.70
306	PATIALA	PATRAN	S-NPP	29.91987	76.11631	13:47:47	D	8.50
307	PATIALA	PATRAN	S-NPP	29.94098	76.09927	13:47:47	D	3.70
308	PATIALA	PATRAN	S-NPP	29.94142	76.09579	13:47:47	D	1.50
309	PATIALA	PATRAN	S-NPP	29.95274	76.09752	13:47:47	D	4.00
310	PATIALA	PATRAN	S-NPP	29.96440	76.13058	13:47:47	D	4.90
311	PATIALA	RAJPURA	AQUA	30.55200	76.52100	14:14:18	D	14.50
312	PATIALA	RAJPURA	AQUA	30.55800	76.53000	14:14:18	D	20.00
313	PATIALA	RAJPURA	S-NPP	30.52891	76.59447	13:47:47	D	4.20
314	PATIALA	RAJPURA	S-NPP	30.52906	76.59394	13:47:47	D	3.30
315	PATIALA	RAJPURA	S-NPP	30.55641	76.73837	13:47:47	D	4.50
316	PATIALA	RAJPURA	S-NPP	30.56608	76.51833	13:47:47	D	4.80
317	PATIALA	SAMANA	S-NPP	30.16138	76.26904	13:47:47	D	3.30
318	PATIALA	SAMANA	S-NPP	30.16306	76.26511	13:47:47	D	2.90
319	PATIALA	SANAUR	S-NPP	30.15051	76.36859	13:47:47	D	2.70
320	PATIALA	SANAUR	S-NPP	30.21819	76.30855	13:47:47	D	6.60
321	PATIALA	SANAUR	S-NPP	30.26587	76.48240	13:47:47	D	3.90
322	PATIALA	SANAUR	S-NPP	30.28595	76.44284	13:47:47	D	8.50
323	PATIALA	SANAUR	S-NPP	30.30445	76.57143	13:47:47	D	2.70
324	PATIALA	SANAUR	S-NPP	30.31722	76.49572	13:47:47	D	2.50
325	PATIALA	SANAUR	S-NPP	30.32572	76.49860	13:47:47	D	3.90
326	PATIALA	SHAMBU KALAN	AQUA	30.41100	76.56400	14:14:18	D	9.10

327	PATIALA	SHAMBU KALAN	S-NPP	30.41091	76.56483	13:47:47	D	4.10
328	PATIALA	SHAMBU KALAN	S-NPP	30.43344	76.70417	13:47:47	D	4.30
329	PATIALA	SHAMBU KALAN	S-NPP	30.43462	76.70380	13:47:47	D	5.60
330	RUPNAGAR	RUPNAGAR	S-NPP	30.94626	76.54229	13:47:47	D	4.20
331	RUPNAGAR	RUPNAGAR	S-NPP	30.94662	76.54167	13:47:47	D	5.00
332	SANGRUR	ANDANA	AQUA	29.81000	76.00200	14:14:18	D	8.60
333	SANGRUR	ANDANA	S-NPP	29.78079	75.97864	13:47:47	D	5.30
334	SANGRUR	ANDANA	S-NPP	29.79244	76.01099	13:47:47	D	3.60
335	SANGRUR	ANDANA	S-NPP	29.81971	76.00695	13:47:47	D	2.90
336	SANGRUR	ANDANA	S-NPP	29.81979	76.00478	13:47:47	D	3.10
337	SANGRUR	ANDANA	S-NPP	29.87235	76.01408	13:47:47	D	4.50
338	SANGRUR	BHAWANIGARH	AQUA	30.22500	76.06600	14:14:18	D	7.20
339	SANGRUR	BHAWANIGARH	S-NPP	30.23876	76.02856	13:47:47	D	4.80
340	SANGRUR	BHAWANIGARH	S-NPP	30.24276	76.03168	13:47:47	D	3.60
341	SANGRUR	BHAWANIGARH	S-NPP	30.27199	76.07972	13:47:47	D	4.60
342	SANGRUR	DHURI	S-NPP	30.30559	75.95295	13:47:47	D	6.40
343	SANGRUR	DIRBA	S-NPP	29.96867	75.99162	13:47:47	D	14.40
344	SANGRUR	DIRBA	S-NPP	29.97257	75.99104	13:47:47	D	5.00
345	SANGRUR	LEHRA GAGA	AQUA	29.84400	75.85400	14:14:18	D	8.80
346	SANGRUR	LEHRA GAGA	AQUA	29.90400	75.84500	14:14:18	D	13.20
347	SANGRUR	LEHRA GAGA	S-NPP	29.84739	75.86498	13:47:47	D	6.00
348	SANGRUR	LEHRA GAGA	S-NPP	29.86353	75.83455	13:47:47	D	7.60
349	SANGRUR	LEHRA GAGA	S-NPP	29.88024	75.91070	13:47:47	D	3.50
350	SANGRUR	LEHRA GAGA	S-NPP	29.90409	75.84528	13:47:47	D	36.10
351	SANGRUR	LEHRA GAGA	S-NPP	29.90795	75.84470	13:47:47	D	36.10
352	SANGRUR	LEHRA GAGA	S-NPP	29.94148	75.72013	13:47:47	D	3.50
353	SANGRUR	MALERKOTLA-1	S-NPP	30.53904	75.98337	13:47:47	D	5.90
354	SANGRUR	MALERKOTLA-2	S-NPP	30.64129	75.87400	13:47:47	D	13.10
355	SANGRUR	SANGRUR	S-NPP	30.18237	75.58023	13:47:47	D	5.20
356	SANGRUR	SANGRUR	S-NPP	30.18619	75.57964	13:47:47	D	4.50
357	SANGRUR	SANGRUR	S-NPP	30.23214	75.79297	13:47:47	D	5.30
358	SANGRUR	SUNAM	AQUA	30.10300	75.89600	14:14:18	D	10.90
359	SANGRUR	SUNAM	S-NPP	30.05618	75.85246	13:47:47	D	4.40

360	SANGRUR	SUNAM	S-NPP	30.07374	75.69876	13:47:47	D	35.50
361	SANGRUR	SUNAM	S-NPP	30.11295	75.79888	13:47:47	D	3.40
362	SANGRUR	SUNAM	S-NPP	30.11403	75.80177	13:47:47	D	1.20
363	SAS NAGAR (MOHALI)	DERABASSI	S-NPP	30.56048	76.85802	13:47:47	D	3.30
364	SAS NAGAR (MOHALI)	KHARAR	S-NPP	30.63015	76.68965	13:47:47	D	1.80
365	SAS NAGAR (MOHALI)	KHARAR	S-NPP	30.66693	76.58031	13:47:47	D	2.60
366	SAS NAGAR (MOHALI)	KHARAR	S-NPP	30.71663	76.58163	13:47:47	D	2.40
367	SAS NAGAR (MOHALI)	MAJRI	S-NPP	30.80124	76.60402	13:47:47	D	3.80
368	TARN TARAN	BHIKHIWIND	AQUA	31.40400	74.68900	14:14:18	D	12.90
369	TARN TARAN	BHIKHIWIND	S-NPP	31.27532	74.71726	13:47:47	D	4.80
370	TARN TARAN	BHIKHIWIND	S-NPP	31.27712	74.73263	13:47:47	D	7.10
371	TARN TARAN	BHIKHIWIND	S-NPP	31.27985	74.73427	13:47:47	D	3.30
372	TARN TARAN	BHIKHIWIND	S-NPP	31.29346	74.61584	13:47:47	D	2.60
373	TARN TARAN	BHIKHIWIND	S-NPP	31.40957	74.65653	13:47:47	D	5.80
374	TARN TARAN	CHOHLA SAHIB	AQUA	31.34000	75.08900	14:14:18	D	9.60
375	TARN TARAN	GANDIWIND TATLA	AQUA	31.55200	74.72700	14:14:18	D	7.10
376	TARN TARAN	GANDIWIND TATLA	S-NPP	31.47747	74.68726	13:47:47	D	7.50
377	TARN TARAN	GANDIWIND TATLA	S-NPP	31.50867	74.65321	13:47:47	D	12.60
378	TARN TARAN	GANDIWIND TATLA	S-NPP	31.55800	74.81371	13:47:47	D	3.30
379	TARN TARAN	KHADUR SAHIB	AQUA	31.45900	75.06200	14:14:18	D	7.90
380	TARN TARAN	KHADUR SAHIB	AQUA	31.46700	75.12600	14:14:18	D	17.60
381	TARN TARAN	KHADUR SAHIB	AQUA	31.48900	75.22800	14:14:18	D	11.90
382	TARN TARAN	KHADUR SAHIB	AQUA	31.50100	75.07600	14:14:18	D	10.30
383	TARN TARAN	KHADUR SAHIB	AQUA	31.50400	75.10100	14:14:18	D	6.60
384	TARN TARAN	KHADUR SAHIB	S-NPP	31.45329	75.16244	13:47:47	D	3.30
385	TARN TARAN	KHADUR SAHIB	S-NPP	31.46174	75.06820	13:47:47	D	7.60
386	TARN TARAN	PATTI	S-NPP	31.26754	74.78853	13:47:47	D	6.80
387	TARN TARAN	TARN TARAN	AQUA	31.38700	74.79200	14:14:18	D	6.70
388	TARN TARAN	TARN TARAN	S-NPP	31.44747	74.97845	13:47:47	D	3.00
389	TARN TARAN	TARN TARAN	S-NPP	31.48006	74.99486	13:47:47	D	2.70
390	TARN TARAN	TARN TARAN	S-NPP	31.48376	74.77025	13:47:47	D	3.70
391	TARN TARAN	TARN TARAN	S-NPP	31.48882	74.87544	13:47:47	D	3.70
392	TARN TARAN	TARN TARAN	S-NPP	31.50380	74.87305	13:47:47	D	3.80

393	TARN TARAN	TARN TARAN	S-NPP	31.50427	74.87555	13:47:47	D	2.70
394	TARN TARAN	VALTOHA	AQUA	31.23700	74.56300	14:14:18	D	6.60
395	TARN TARAN	VALTOHA	S-NPP	31.13082	74.64188	13:47:47	D	5.10
396	TARN TARAN	VALTOHA	S-NPP	31.18639	74.52271	13:47:47	D	5.40
397	TARN TARAN	VALTOHA	S-NPP	31.26354	74.57146	13:47:47	D	3.20
398	TARN TARAN	VALTOHA	S-NPP	31.26534	74.56898	13:47:47	D	9.00

Details of residue burning events in Haryana on 25-Oct-2023

S. No.	District	Tehsil / Block	Satellite	Latitude	Longitude	ACQ_TIME	Day / Night	Fire Power (W/m2)
1	AMBALA	AMBALA-II	S-NPP	30.25585	76.61563	13:47:47	D	4.70
2	AMBALA	AMBALA-II	S-NPP	30.26358	76.80357	13:47:47	D	8.90
3	AMBALA	AMBALA-II	S-NPP	30.26403	76.80775	13:47:47	D	8.90
4	AMBALA	AMBALA-II	S-NPP	30.33108	76.74373	13:47:47	D	4.50
5	AMBALA	AMBALA-II	S-NPP	30.33182	76.74313	13:47:47	D	5.10
6	AMBALA	BARARA	S-NPP	30.31160	77.14027	13:47:47	D	2.30
7	AMBALA	NARAINGARH	S-NPP	30.38065	77.18532	13:47:47	D	4.30
8	AMBALA	SAHA	S-NPP	30.20771	76.92661	13:47:47	D	3.70
9	FATEHABAD	BHUNA	AQUA	29.59600	75.73900	14:14:18	D	9.60
10	FATEHABAD	BHUNA	S-NPP	29.55900	75.81448	13:47:47	D	5.00
11	FATEHABAD	TOHANA	AQUA	29.60900	75.93700	14:14:18	D	9.00
12	FATEHABAD	TOHANA	S-NPP	29.65465	75.91556	13:47:47	D	4.40
13	FATEHABAD	TOHANA	S-NPP	29.73892	75.88908	13:47:47	D	3.60
14	HISAR	AGROHA	S-NPP	29.33607	75.58230	13:47:47	D	4.60
15	HISAR	BARWALA	S-NPP	29.30870	76.04607	13:47:47	D	5.50
16	HISAR	BARWALA	S-NPP	29.39384	75.88609	13:47:47	D	5.20
17	HISAR	BARWALA	S-NPP	29.42331	75.90380	13:47:47	D	6.40
18	HISAR	HANSI-I	S-NPP	29.21366	76.04591	13:47:47	D	8.10
19	HISAR	NARNAUND	AQUA	29.24700	76.05800	14:14:18	D	7.50
20	HISAR	UKLANA	S-NPP	29.42606	75.79314	13:47:47	D	3.30
21	HISAR	UKLANA	S-NPP	29.46571	75.86423	13:47:47	D	2.40
22	JIND	NARWANA	AQUA	29.74300	76.03200	14:14:18	D	8.00
23	JIND	NARWANA	S-NPP	29.69723	75.94287	13:47:47	D	2.90
24	JIND	NARWANA	S-NPP	29.69809	75.94576	13:47:47	D	5.90
25	JIND	NARWANA	S-NPP	29.75088	76.02853	13:47:47	D	13.50
26	JIND	SAFIDON	S-NPP	29.44929	76.68555	13:47:47	D	3.90
27	JIND	SAFIDON	S-NPP	29.45329	76.57700	13:47:47	D	5.70
28	JIND	SAFIDON	S-NPP	29.45332	76.68499	13:47:47	D	3.90
29	JIND	UCHANA	S-NPP	29.51394	76.27654	13:47:47	D	8.60
30	KAITHAL	GUHLA	S-NPP	29.96948	76.33800	13:47:47	D	9.80

31	KAITHAL	GUHLA	S-NPP	29.97090	76.33556	13:47:47	D	8.60
32	KAITHAL	GUHLA	S-NPP	29.97705	76.28120	13:47:47	D	3.50
33	KAITHAL	RAJOUND	S-NPP	29.66832	76.46333	13:47:47	D	5.30
34	KAITHAL	SIWAN	S-NPP	29.90413	76.18836	13:47:47	D	5.90
35	KAITHAL	SIWAN	S-NPP	29.94698	76.42499	13:47:47	D	4.00
36	KARNAL	CHIRAO	S-NPP	29.60779	76.85735	13:47:47	D	3.30
37	KARNAL	GHARAUNDA	S-NPP	29.58852	77.05002	13:47:47	D	2.60
38	KURUKSHETRA	PEHOWA	S-NPP	29.96401	76.68851	13:47:47	D	2.90
39	KURUKSHETRA	PEHOWA	S-NPP	29.96412	76.68832	02:37:48	N	2.20
40	KURUKSHETRA	PEHOWA	S-NPP	29.96416	76.69054	02:37:48	N	1.70
41	KURUKSHETRA	PEHOWA	S-NPP	29.96507	76.68622	02:37:48	N	1.70
42	KURUKSHETRA	SHAHBAD	S-NPP	30.16201	76.89006	13:47:47	D	2.30
43	KURUKSHETRA	THANESAR	AQUA	29.93700	76.74700	14:14:18	D	8.80
44	KURUKSHETRA	THANESAR	S-NPP	29.92323	76.88712	13:47:47	D	3.80
45	KURUKSHETRA	THANESAR	S-NPP	29.93422	76.74914	02:37:48	N	2.00
46	KURUKSHETRA	THANESAR	S-NPP	29.93774	76.75043	13:47:47	D	8.50
47	KURUKSHETRA	THANESAR	S-NPP	29.93836	76.75027	02:37:48	N	2.00
48	KURUKSHETRA	THANESAR	S-NPP	29.95491	76.75636	13:47:47	D	2.30
49	PALWAL	HASSANPUR	S-NPP	28.03700	77.40191	13:47:47	D	6.10
50	PALWAL	PALWAL	S-NPP	28.12234	77.35696	13:47:47	D	4.80
51	PALWAL	PRITHLA	S-NPP	28.19861	77.30867	13:47:47	D	3.30
52	PANIPAT	BAPPAULI	S-NPP	29.36822	77.03960	02:37:48	N	13.90
53	SIRSA	ODHAN	S-NPP	29.80496	74.96586	13:47:47	D	3.80
54	SIRSA	ODHAN	S-NPP	29.87702	75.07927	13:47:47	D	2.30
55	SONIPAT	GANAUR	S-NPP	29.10514	76.91718	13:47:47	D	3.00
56	SONIPAT	MUNDLANA	S-NPP	29.19799	76.75351	13:47:47	D	2.70
57	YAMUNANAGAR	RADAUR	S-NPP	30.07822	77.15176	13:47:47	D	2.50
58	YAMUNANAGAR	SADHAURA	S-NPP	30.38051	77.18887	13:47:47	D	5.30

Details of residue burning events in Uttar Pradesh on 25-Oct-2023

S. No.	District	Tehsil / Block	Satellite	Latitude	Longitude	ACQ_TIME	Day / Night	Fire Power (W/m2)
1	ALIGARH	KHAIR	AQUA	28.10500	77.58400	14:14:18	D	12.10
2	ALIGARH	KHAIR	S-NPP	27.95520	77.78026	13:47:47	D	1.40
3	ALIGARH	KHAIR	S-NPP	27.99137	77.79766	13:47:47	D	2.90
4	ALIGARH	KHAIR	S-NPP	27.99452	77.79330	13:47:47	D	9.00
5	BAHRAICH	BAHRAICH	S-NPP	27.65811	81.67057	13:47:47	D	2.80
6	BAREILLY	BAHERI	S-NPP	28.82501	79.48987	13:47:47	D	4.10
7	ETAWAH	BHARTHNA	S-NPP	26.69433	79.13779	13:47:47	D	6.30
8	FATEHPUR	KHAGA	S-NPP	25.55428	81.20483	13:47:47	D	1.50
9	GHAZIABAD	GHAZIABAD	S-NPP	28.65277	77.56037	13:47:47	D	2.20
10	HARDOI	HARDOI	S-NPP	27.39642	79.97613	00:58:13	N	0.60
11	JHANSI	JHANSI	S-NPP	25.55692	78.66325	13:47:47	D	6.70
12	JHANSI	TAHRAULI	S-NPP	25.53588	78.84091	13:47:47	D	2.30
13	JHANSI	TAHRAULI	S-NPP	25.53609	78.84190	13:47:47	D	1.90
14	JHANSI	TAHRAULI	S-NPP	25.57729	78.77132	13:47:47	D	6.40
15	KAUSHAMBI	MANJHANPUR	S-NPP	25.46570	81.33893	13:47:47	D	2.80
16	LUCKNOW	MOHANLAL GANJ	S-NPP	26.81574	81.03051	13:47:47	D	2.90
17	LUCKNOW	MOHANLAL GANJ	S-NPP	26.81810	81.02991	13:47:47	D	2.50
18	MATHURA	CHHATA	AQUA	27.68000	77.45400	14:14:18	D	11.00
19	MATHURA	CHHATA	S-NPP	27.59877	77.53085	13:47:47	D	4.60
20	MATHURA	CHHATA	S-NPP	27.74476	77.50316	13:47:47	D	2.10
21	MATHURA	CHHATA	S-NPP	27.74639	77.50318	13:47:47	D	2.60
22	MATHURA	CHHATA	S-NPP	27.75164	77.43490	13:47:47	D	5.80
23	MATHURA	CHHATA	S-NPP	27.79787	77.55150	13:47:47	D	2.30
24	PILHIBHIT	PILHIBHIT	S-NPP	28.78163	79.80415	13:47:47	D	4.30
25	PILHIBHIT	PURANPUR	AQUA	28.35400	80.14000	14:14:18	D	25.10
26	PILHIBHIT	PURANPUR	S-NPP	28.45194	80.22770	13:47:47	D	4.50
27	PILHIBHIT	PURANPUR	S-NPP	28.65386	80.01182	02:37:48	N	1.20
28	RAMPUR	BILASPUR	S-NPP	28.92281	79.39597	13:47:47	D	5.80
29	RAMPUR	BILASPUR	S-NPP	28.94014	79.27486	13:47:47	D	2.70
30	SHARANPUR	NAKUR	S-NPP	29.80356	77.33354	02:37:48	N	1.00

Details of residue burning events in Rajasthan on 25-Oct-2023

S. No.	District	Tehsil / Block	Satellite	Latitude	Longitude	ACQ_TIME	Day / Night	Fire Power (W/m2)
1	BARAN	ATRU	S-NPP	24.82359	76.51016	13:47:47	D	3.70
2	BARAN	CHHABRA	S-NPP	24.57573	76.80348	13:47:47	D	2.80
3	BARAN	CHHABRA	S-NPP	24.60986	76.92441	13:47:47	D	5.90
4	BARAN	CHHABRA	S-NPP	24.69014	76.96294	13:47:47	D	5.70
5	BARAN	CHHIPABAROD	S-NPP	24.45759	76.84390	13:47:47	D	3.40
6	BARAN	KISHANGUNJ	S-NPP	25.08042	76.73824	13:47:47	D	3.00
7	BARAN	KISHANGUNJ	S-NPP	25.21387	76.69551	13:47:47	D	5.10
8	BARAN	KISHANGUNJ	S-NPP	25.22541	76.66240	13:47:47	D	2.50
9	BARAN	MANGROL	S-NPP	25.38433	76.57896	13:47:47	D	3.90
10	BARAN	SHAHBAD	S-NPP	25.10987	77.02206	13:47:47	D	2.90
11	BARAN	SHAHBAD	S-NPP	25.14086	77.14622	13:47:47	D	5.20
12	BARAN	SHAHBAD	S-NPP	25.23800	76.96344	13:47:47	D	4.20
13	BARAN	SHAHBAD	S-NPP	25.24188	76.96288	13:47:47	D	3.60
14	BUNDI	BUNDI	AQUA	25.32400	75.69800	14:14:18	D	7.60
15	BUNDI	BUNDI	S-NPP	25.29676	75.83409	13:47:47	D	5.20
16	BUNDI	BUNDI	S-NPP	25.29737	75.83878	13:47:47	D	5.20
17	BUNDI	BUNDI	S-NPP	25.34110	75.83466	13:47:47	D	4.70
18	BUNDI	BUNDI	S-NPP	25.38381	75.81857	13:47:47	D	5.00
19	BUNDI	KESHORAIPATAN	AQUA	25.34900	75.92800	14:14:18	D	8.60
20	BUNDI	KESHORAIPATAN	S-NPP	25.28073	76.02989	13:47:47	D	1.80
21	BUNDI	KESHORAIPATAN	S-NPP	25.28263	75.98572	13:47:47	D	6.30
22	BUNDI	KESHORAIPATAN	S-NPP	25.28631	75.98517	13:47:47	D	6.30
23	BUNDI	KESHORAIPATAN	S-NPP	25.32056	75.93900	13:47:47	D	2.30
24	BUNDI	KESHORAIPATAN	S-NPP	25.32116	75.94375	13:47:47	D	2.30
25	BUNDI	KESHORAIPATAN	S-NPP	25.33101	75.93257	13:47:47	D	5.30
26	BUNDI	KESHORAIPATAN	S-NPP	25.37202	75.96032	13:47:47	D	5.20
27	BUNDI	KESHORAIPATAN	S-NPP	25.41439	75.93937	13:47:47	D	4.10
28	BUNDI	KESHORAIPATAN	S-NPP	25.46989	76.03521	13:47:47	D	2.80
29	BUNDI	KESHORAIPATAN	S-NPP	25.47420	76.03948	13:47:47	D	3.00
30	BUNDI	KESHORAIPATAN	S-NPP	25.49211	76.03185	13:47:47	D	2.60
31	HANUMANGARH	HANUMANGARH	S-NPP	29.57319	74.27791	13:47:47	D	4.60

32	HANUMANGARH	TIBI	S-NPP	29.49216	74.57172	13:47:47	D	2.60
33	HANUMANGARH	TIBI	S-NPP	29.49818	74.56108	13:47:47	D	1.50
34	HANUMANGARH	TIBI	S-NPP	29.57719	74.51102	13:47:47	D	4.70
35	HANUMANGARH	TIBI	S-NPP	29.57786	74.45800	13:47:47	D	7.50
36	HANUMANGARH	TIBI	S-NPP	29.63489	74.58878	13:47:47	D	2.60
37	HANUMANGARH	TIBI	S-NPP	29.63851	74.58818	13:47:47	D	2.60
38	HANUMANGARH	TIBI	S-NPP	29.64449	74.54836	13:47:47	D	1.80
39	HANUMANGARH	TIBI	S-NPP	29.64554	74.55007	13:47:47	D	2.60
40	KOTA	PIPALDA	S-NPP	25.45042	76.49481	13:47:47	D	2.80
41	KOTA	PIPALDA	S-NPP	25.73192	76.45017	13:47:47	D	8.60
42	KOTA	SANGOD	AQUA	25.06500	76.16600	14:14:18	D	5.90
43	KOTA	SANGOD	S-NPP	24.97104	76.24787	13:47:47	D	2.70
44	SWAIMADHOPUR	KHANDAR	S-NPP	25.87903	76.58459	13:47:47	D	4.20
45	SWAIMADHOPUR	KHANDAR	S-NPP	26.03644	76.67642	13:47:47	D	4.80
46	SWAIMADHOPUR	KHANDAR	S-NPP	26.03709	76.68167	13:47:47	D	9.90
47	SWAIMADHOPUR	KHANDAR	S-NPP	26.03820	76.67907	13:47:47	D	7.00

Details of residue burning events in Madhya Pradesh on 25-Oct-2023

S. No.	District	Tehsil / Block	Satellite	Latitude	Longitude	ACQ_TIME	Day / Night	Fire Power (W/m ²)
1	ASHOKNAGAR	ASHOKNAGAR	S-NPP	24.61026	77.48920	13:47:47	D	8.50
2	ASHOKNAGAR	CHANDERI	S-NPP	24.57989	77.93177	13:47:47	D	9.30
3	ASHOKNAGAR	CHANDERI	S-NPP	24.58072	77.93095	13:47:47	D	9.80
4	ASHOKNAGAR	CHANDERI	S-NPP	24.63511	77.87218	13:47:47	D	1.70
5	ASHOKNAGAR	ISAGARH	S-NPP	24.95762	77.81214	13:47:47	D	3.30
6	ASHOKNAGAR	MUNGAOLI	S-NPP	24.33513	77.94475	13:47:47	D	3.60
7	ASHOKNAGAR	MUNGAOLI	S-NPP	24.33764	77.86134	13:47:47	D	1.90
8	ASHOKNAGAR	MUNGAOLI	S-NPP	24.51176	78.08958	13:47:47	D	4.10
9	BHIND	GOHAD	S-NPP	26.45372	78.35492	13:47:47	D	2.80
10	BHIND	MAHGAWAN	S-NPP	26.55712	78.45318	13:47:47	D	4.20
11	BURHANPUR	BURHANPUR	S-NPP	21.24746	76.30724	13:47:47	D	2.00
12	BURHANPUR	BURHANPUR	S-NPP	21.25145	76.18417	13:47:47	D	3.60
13	DAMOH	DAMOH	S-NPP	23.59877	79.41798	13:47:47	D	1.80
14	DATIA	BHANDER	S-NPP	25.98176	78.77319	13:47:47	D	3.30
15	DATIA	DATIA	S-NPP	25.56149	78.30984	13:47:47	D	3.50
16	DATIA	DATIA	S-NPP	25.62487	78.30350	13:47:47	D	1.70
17	DATIA	DATIA	S-NPP	25.62889	78.64025	13:47:47	D	3.20
18	DATIA	DATIA	S-NPP	25.63039	78.63785	13:47:47	D	2.80
19	DATIA	DATIA	S-NPP	25.67012	78.55986	13:47:47	D	2.20
20	DATIA	DATIA	S-NPP	25.71105	78.39410	13:47:47	D	5.10
21	DATIA	DATIA	S-NPP	25.74228	78.36349	13:47:47	D	3.40
22	DATIA	DATIA	S-NPP	25.77957	78.54677	13:47:47	D	2.30
23	DATIA	SEONDHA	S-NPP	25.86549	78.47359	13:47:47	D	3.70
24	DATIA	SEONDHA	S-NPP	25.93853	78.58237	13:47:47	D	2.50
25	DATIA	SEONDHA	S-NPP	25.94003	78.50094	13:47:47	D	4.30
26	DATIA	SEONDHA	S-NPP	26.11466	78.72617	13:47:47	D	4.50
27	DHAR	MANAWAR	S-NPP	22.17923	75.21641	13:47:47	D	5.50
28	EAST NIMAR	HARSUD	S-NPP	22.18985	76.73156	13:47:47	D	3.60
29	EAST NIMAR	KHANDWA	S-NPP	21.81549	76.47179	13:47:47	D	4.70

30	GUNA	ARON	S-NPP	24.37087	77.48127	13:47:47	D	5.70
31	GUNA	GUNA	AQUA	24.88900	77.12900	14:14:18	D	13.40
32	GUNA	GUNA	S-NPP	24.57720	77.41479	13:47:47	D	6.50
33	GUNA	GUNA	S-NPP	24.58247	77.42529	13:47:47	D	2.60
34	GUNA	GUNA	S-NPP	24.73936	77.43502	13:47:47	D	5.50
35	GUNA	GUNA	S-NPP	24.74112	77.43217	13:47:47	D	8.30
36	GUNA	GUNA	S-NPP	24.74456	77.12171	13:47:47	D	7.20
37	GUNA	GUNA	S-NPP	24.75363	77.13126	13:47:47	D	4.90
38	GUNA	GUNA	S-NPP	24.75752	77.13069	13:47:47	D	11.80
39	GUNA	GUNA	S-NPP	24.93231	77.20013	13:47:47	D	6.90
40	GUNA	GUNA	S-NPP	24.93322	77.20177	13:47:47	D	4.60
41	GUNA	GUNA	S-NPP	25.02223	77.11912	13:47:47	D	2.30
42	GUNA	GUNA	S-NPP	25.02238	77.12138	13:47:47	D	5.00
43	GUNA	GUNA	S-NPP	25.02409	76.96680	13:47:47	D	2.90
44	GUNA	RAGHOGARH	AQUA	24.32200	77.15700	14:14:18	D	10.90
45	GUNA	RAGHOGARH	S-NPP	24.51374	77.11650	13:47:47	D	5.40
46	GWALIOR	BHITARWAR	S-NPP	25.87325	78.03545	13:47:47	D	8.10
47	GWALIOR	BHITARWAR	S-NPP	25.97308	78.24654	13:47:47	D	3.00
48	GWALIOR	DABRA	AQUA	26.01400	78.29300	14:14:18	D	16.30
49	GWALIOR	DABRA	S-NPP	25.85635	78.34967	13:47:47	D	2.80
50	GWALIOR	DABRA	S-NPP	26.02036	78.29101	13:47:47	D	2.00
51	GWALIOR	DABRA	S-NPP	26.02083	78.29536	13:47:47	D	7.40
52	HOSHANGABAD	BABAI	S-NPP	22.66777	77.99218	13:47:47	D	10.60
53	HOSHANGABAD	BABAI	S-NPP	22.66898	77.99046	13:47:47	D	11.90
54	HOSHANGABAD	BABAI	S-NPP	22.75167	78.03591	13:47:47	D	11.60
55	HOSHANGABAD	BABAI	S-NPP	22.75384	77.93712	13:47:47	D	6.40
56	HOSHANGABAD	BABAI	S-NPP	22.76320	77.91338	13:47:47	D	2.70
57	HOSHANGABAD	ITARSI	S-NPP	22.45693	77.83938	13:47:47	D	6.80
58	HOSHANGABAD	PIPARIYA	S-NPP	22.86880	78.42883	13:47:47	D	13.50
59	HOSHANGABAD	SEONI MALWA	AQUA	22.39900	77.49600	14:14:18	D	38.80
60	HOSHANGABAD	SEONI MALWA	S-NPP	22.37854	77.46242	13:47:47	D	1.50
61	HOSHANGABAD	SEONI MALWA	S-NPP	22.37962	77.39680	13:47:47	D	4.20
62	HOSHANGABAD	SEONI MALWA	S-NPP	22.38000	77.46449	13:47:47	D	2.70
63	HOSHANGABAD	SEONI MALWA	S-NPP	22.38657	77.42178	13:47:47	D	3.10

64	HOSHANGABAD	SEONI MALWA	S-NPP	22.40377	77.46638	13:47:47	D	5.70
65	HOSHANGABAD	SEONI MALWA	S-NPP	22.55350	77.49004	13:47:47	D	12.70
66	HOSHANGABAD	SEONI MALWA	S-NPP	22.59324	77.36916	13:47:47	D	4.50
67	MORENA	KAILARAS	S-NPP	26.32041	77.64408	13:47:47	D	4.50
68	MORENA	SABALGARH	S-NPP	26.25076	77.35629	13:47:47	D	1.60
69	NARSHIMAPURA	GADARWARA	S-NPP	22.92176	78.62963	13:47:47	D	2.50
70	NARSHIMAPURA	NARSIMHAPUR	S-NPP	23.02289	79.14902	13:47:47	D	2.50
71	RAISEN	GOHARGANJ	AQUA	22.98500	77.54000	14:14:18	D	10.20
72	RAISEN	GOHARGANJ	S-NPP	23.03818	77.52277	13:47:47	D	2.60
73	SAGAR	REHLI	S-NPP	23.57582	79.16496	13:47:47	D	2.20
74	SAGAR	REHLI	S-NPP	23.62852	79.16292	13:47:47	D	3.60
75	SAGAR	REHLI	S-NPP	23.62903	79.16743	13:47:47	D	3.30
76	SAGAR	SAGAR	AQUA	23.83400	78.69000	14:14:18	D	12.00
77	SAGAR	SAGAR	S-NPP	23.68533	78.54211	13:47:47	D	2.30
78	SATNA	NAGOD	S-NPP	24.60497	80.55494	13:47:47	D	2.60
79	SEHORE	BUDHNI	AQUA	22.70900	77.45200	14:14:18	D	7.60
80	SEHORE	BUDHNI	S-NPP	22.69930	77.54716	13:47:47	D	3.50
81	SEHORE	BUDHNI	S-NPP	22.77934	77.45347	13:47:47	D	4.10
82	SEHORE	BUDHNI	S-NPP	22.78321	77.45292	13:47:47	D	3.00
83	SEHORE	NASRULLAHGANJ	S-NPP	22.66750	77.38783	13:47:47	D	2.40
84	SEHORE	NASRULLAHGANJ	S-NPP	22.79663	77.37200	13:47:47	D	2.80
85	SEONI	GHANSAUR	S-NPP	22.56126	79.89346	13:47:47	D	8.80
86	SEONI	GHANSAUR	S-NPP	22.56355	79.89143	13:47:47	D	5.50
87	SEONI	LAKHNADOU	S-NPP	22.32344	79.54047	13:47:47	D	4.00
88	SEONI	SEONI	S-NPP	21.99732	79.56825	13:47:47	D	2.40
89	SEONI	SEONI	S-NPP	22.09038	79.52933	13:47:47	D	9.20
90	SEONI	SEONI	S-NPP	22.09078	79.52603	13:47:47	D	5.30
91	SEONI	SEONI	S-NPP	22.09127	79.53049	13:47:47	D	5.30
92	SEONI	SEONI	S-NPP	22.11646	79.51817	13:47:47	D	1.40
93	SEONI	SEONI	S-NPP	22.16288	79.34561	13:47:47	D	11.70
94	SEONI	SEONI	S-NPP	22.17294	79.47031	13:47:47	D	3.20
95	SEONI	SEONI	S-NPP	22.17978	79.68605	13:47:47	D	6.70
96	SEONI	SEONI	S-NPP	22.21373	79.67828	13:47:47	D	3.60
97	SEONI	SEONI	S-NPP	22.21457	79.67706	13:47:47	D	4.30

98	SEONI	SEONI	S-NPP	22.21765	79.67306	13:47:47	D	3.70
99	SEONI	SEONI	S-NPP	22.21899	79.67650	13:47:47	D	4.50
100	SEONI	SEONI	S-NPP	22.22025	79.73869	13:47:47	D	12.60
101	SEONI	SEONI	S-NPP	22.22152	79.73737	13:47:47	D	9.40
102	SEONI	SEONI	S-NPP	22.22205	79.74200	13:47:47	D	11.70
103	SEONI	SEONI	S-NPP	22.23921	79.54479	13:47:47	D	3.00
104	SEONI	SEONI	S-NPP	22.24251	79.41679	13:47:47	D	3.70
105	SEONI	SEONI	S-NPP	22.29216	79.65891	13:47:47	D	5.00
106	SEONI	SEONI	S-NPP	22.29710	79.66302	13:47:47	D	4.00
107	SHAJAPUR	KALA PIPAL	S-NPP	23.20591	76.79330	13:47:47	D	4.10
108	SHEOPUR	KARAHAL	AQUA	25.42100	76.81900	14:14:18	D	15.10
109	SHEOPUR	KARAHAL	AQUA	25.47400	76.75400	14:14:18	D	19.40
110	SHEOPUR	KARAHAL	AQUA	25.47900	76.71500	14:14:18	D	7.90
111	SHEOPUR	KARAHAL	AQUA	25.53500	76.75800	14:14:18	D	48.80
112	SHEOPUR	KARAHAL	S-NPP	25.35730	76.86825	13:47:47	D	5.30
113	SHEOPUR	KARAHAL	S-NPP	25.41850	76.82201	13:47:47	D	8.20
114	SHEOPUR	KARAHAL	S-NPP	25.41965	76.82027	13:47:47	D	15.80
115	SHEOPUR	KARAHAL	S-NPP	25.42236	76.82145	13:47:47	D	8.20
116	SHEOPUR	KARAHAL	S-NPP	25.49558	76.73469	13:47:47	D	7.40
117	SHEOPUR	SHEOPUR	AQUA	25.40600	76.69400	14:14:18	D	14.90
118	SHEOPUR	SHEOPUR	AQUA	25.60100	76.53900	14:14:18	D	12.00
119	SHEOPUR	SHEOPUR	AQUA	25.69900	76.68300	14:14:18	D	6.30
120	SHEOPUR	SHEOPUR	AQUA	25.70200	76.52400	14:14:18	D	18.90
121	SHEOPUR	SHEOPUR	AQUA	25.71700	76.64800	14:14:18	D	11.70
122	SHEOPUR	SHEOPUR	AQUA	25.87500	76.78700	14:14:18	D	20.30
123	SHEOPUR	SHEOPUR	AQUA	25.87600	76.80000	14:14:18	D	9.90
124	SHEOPUR	SHEOPUR	AQUA	25.92000	76.82600	14:14:18	D	18.20
125	SHEOPUR	SHEOPUR	AQUA	25.92200	76.83300	14:14:18	D	29.80
126	SHEOPUR	SHEOPUR	AQUA	25.92200	76.83900	14:14:18	D	22.30
127	SHEOPUR	SHEOPUR	S-NPP	25.41262	76.66212	13:47:47	D	7.10
128	SHEOPUR	SHEOPUR	S-NPP	25.54446	76.54568	13:47:47	D	4.50
129	SHEOPUR	SHEOPUR	S-NPP	25.54827	76.54513	13:47:47	D	4.50
130	SHEOPUR	SHEOPUR	S-NPP	25.57423	76.66203	13:47:47	D	25.00
131	SHEOPUR	SHEOPUR	S-NPP	25.57934	76.67189	13:47:47	D	5.70

132	SHEOPUR	SHEOPUR	S-NPP	25.60024	76.53493	13:47:47	D	5.40
133	SHEOPUR	SHEOPUR	S-NPP	25.60222	76.54243	13:47:47	D	6.40
134	SHEOPUR	SHEOPUR	S-NPP	25.60527	76.54461	13:47:47	D	9.80
135	SHEOPUR	SHEOPUR	S-NPP	25.60943	76.69416	13:47:47	D	7.40
136	SHEOPUR	SHEOPUR	S-NPP	25.62079	76.64225	13:47:47	D	4.20
137	SHEOPUR	SHEOPUR	S-NPP	25.65270	76.64816	13:47:47	D	2.50
138	SHEOPUR	SHEOPUR	S-NPP	25.71536	76.64978	13:47:47	D	3.70
139	SHEOPUR	SHEOPUR	S-NPP	25.72862	76.68237	13:47:47	D	6.10
140	SHEOPUR	SHEOPUR	S-NPP	25.73892	76.67021	13:47:47	D	3.70
141	SHEOPUR	SHEOPUR	S-NPP	25.74089	76.65394	13:47:47	D	9.30
142	SHEOPUR	SHEOPUR	S-NPP	25.74473	76.65337	13:47:47	D	9.30
143	SHEOPUR	SHEOPUR	S-NPP	25.74857	76.65281	13:47:47	D	5.20
144	SHEOPUR	SHEOPUR	S-NPP	25.81511	76.60439	13:47:47	D	5.40
145	SHEOPUR	SHEOPUR	S-NPP	25.86521	76.76331	13:47:47	D	2.50
146	SHEOPUR	SHEOPUR	S-NPP	25.88456	76.76053	13:47:47	D	4.90
147	SHEOPUR	SHEOPUR	S-NPP	25.91744	76.83739	13:47:47	D	11.10
148	SHIVPURI	KOLARAS	AQUA	24.94700	77.62600	14:14:18	D	14.40
149	SHIVPURI	KOLARAS	AQUA	24.97200	77.75100	14:14:18	D	18.40
150	SHIVPURI	KOLARAS	S-NPP	24.90897	77.71186	13:47:47	D	2.00
151	SHIVPURI	KOLARAS	S-NPP	24.91442	77.65253	13:47:47	D	4.40
152	SHIVPURI	KOLARAS	S-NPP	24.95197	77.62405	13:47:47	D	3.00
153	SHIVPURI	KOLARAS	S-NPP	24.95242	77.62788	13:47:47	D	4.90
154	VIDESHA	BASODA	S-NPP	23.85362	78.01770	13:47:47	D	2.90
155	VIDESHA	GYARASPUR	S-NPP	23.50275	78.01038	13:47:47	D	4.50
156	VIDESHA	VIDESHA	S-NPP	23.36444	78.02549	13:47:47	D	3.40
157	VIDESHA	VIDESHA	S-NPP	23.53617	77.96233	02:37:48	N	0.40
158	WEST NIMAR	BHAGWANPURA	S-NPP	21.64495	75.61063	13:47:47	D	2.30
159	WEST NIMAR	KHARGON	S-NPP	21.75678	75.58959	13:47:47	D	9.40

The study used data received from following Satellites at NRSC Ground Station

S. No.	Satellite Name	Sensor	Resolution (meter)	Day / Night Passes
1.	Suomi NPP	VIIRS	375 / 750	Both
2.	Terra	MODIS	1000	Both
3.	Aqua	MODIS	1000	Both

**The rice mask for the Punjab and Haryana were provided by MNCFC, MoA&FW, Govt of India
The kharif crop mask for Delhi, Uttar Pradesh, Rajasthan and Madhya Pradesh were provided by NRSC (ISRO)**

Study Team

ICAR – HQ	Dr Rajbir Singh	ADG-NRM (AAF&CC)	rajbirsingh.nrm@gmail.com
ICAR - IARI	Dr V.K. Sehgal	Pr. Scientist & Nodal Officer	jaricreams@gmail.com
	Dr Rajkumar Dhakar	Scientist	rajdhakar.iari@gmail.com
	Mr Mohd Jahangir	Lab Assistant (KRISHI)	mjahangir198@gmail.com
ICAR - ATARI	Dr Parvender Sheoran	Director ATARI (Zone-I) Ludhiana	zcu1ldh@gmail.com
	Dr. J.P. Mishra	Director ATARI (Zone-II) Jodhpur	jp.mishra67@gov.in
	Dr S.K. Dubey	Director ATARI (Zone-III) Kanpur	zpdicarkanpur@gmail.com
ICAR - IASRI	Dr Rajender Parsad	Director	rajender.parsad@icar.gov.in

GIS Maps of fire events can be visualized online on ICAR KRISHI Geoportal website: <http://geoportal.icar.gov.in:8080/geoexplorer/composer/>
(Part of KRISHI Portal: <https://krishi.icar.gov.in> initiative)

The DASHBOARD for paddy residue burning events is available at weblink: [CREAMS Fire Dashboard](#)
