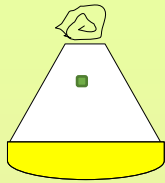




Ready Reckoner/MRC/2023/07

Isolation and detection of *Vibrio* sp. As per ISO 21872

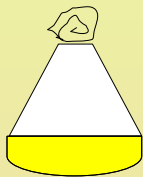
Primary enrichment for *V. parahaemolyticus* & *V. cholerae*



Fresh raw samples: Incubate @ 41.5°C for 6 ± 1 h
Fresh frozen, salted & dry samples: Incubate @ 37°C for 6 ± 1 h

25g Sample + 225 ml ASPW
(Alkaline Saline Peptone Water)

Secondary enrichment for *V. parahaemolyticus* & *V. cholerae*



1 ml



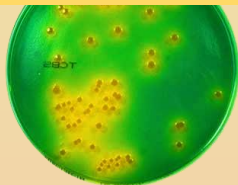
10ml ASPW

Fresh raw, frozen, salted & dried samples:
Incubate @ 41.5°C for 18 ± 1 h

Transfer 1 ml of enriched sample to 10ml ASPW
without shaking

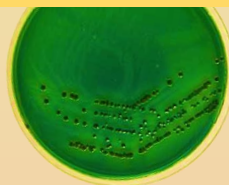
Plating on TCBS for *V. parahaemolyticus* & *V. cholerae*

Vibrio cholerae on TCBS



Yellow colour colony

Vibrio parahaemolyticus on TCBS



Green colour colony

Identification

Secondary plating on
chromogenic agars
are optional

Pick individual typical colony and transfer to trypticase soy agar / nutrient agar

Biochemical testing

Serological testing

PCR

Confirmation

Expression of results: Present/ Absent